

Unemployment Analysis

	January	February	March	April	May	June	July revised	August preliminary	September	October	November	December	10 YTD Avg	09 YTD Avg	10 vs 09
Anchorage															
Labor Force	158,078	157,990	157,926	157,361	155,500	156,062	155,561	154,426					156,613	153,589	3,025
Employment	146,338	145,777	145,654	146,204	144,798	145,440	145,896	144,311					145,552	143,535	2,017
Unemployment	11,740	12,213	12,272	11,157	10,720	10,622	9,665	10,115					11,063	10,054	1,009
Rate	7.4%	7.7%	7.8%	7.1%	6.9%	6.8%	6.2%	6.6%					7.1%	6.5%	0.5%
Mat-Su Borough															
Labor Force	43,919	43,851	43,811	43,166	42,248	42,384	42,131	41,762					42,909	42,205	705
Employment	39,039	38,890	38,857	39,004	38,629	38,800	38,922	38,499					38,830	38,292	538
Unemployment	4,880	4,961	4,954	4,162	3,619	3,584	3,209	3,263					4,079	3,913	166
Rate	11.1%	11.3%	11.3%	9.6%	8.6%	8.5%	7.6%	7.8%					9.5%	9.3%	0.2%
Kenai Peninsula Borough															
Labor Force	26,550	26,300	26,545	26,781	27,696	28,501	28,736	27,778					27,361	26,800	561
Employment	23,073	22,801	23,166	23,840	25,127	26,010	26,500	25,466					24,498	23,973	525
Unemployment	3,477	3,499	3,379	2,941	2,569	2,491	2,236	2,312					2,863	2,827	37
Rate	13.1%	13.3%	12.7%	11.0%	9.3%	8.7%	7.8%	8.3%					10.5%	10.5%	-0.1%
Southcentral Region Averages															
Labor Force	228,547	228,141	228,282	227,308	225,444	226,947	226,428	223,966	-	-	-	-	259,295	222,593	36,702
Employment	208,450	207,468	207,677	209,048	208,554	210,250	211,318	208,276	-	-	-	-	238,720	205,800	32,920
Unemployment	20,097	20,673	20,605	18,260	16,890	16,697	15,110	15,690	-	-	-	-	20,575	16,793	3,782
Rate	8.8%	9.1%	9.0%	8.0%	7.5%	7.4%	6.7%	7.0%					7.9%	7.5%	0.4%



**Industry Employment Estimates 2010
Municipality of Anchorage**

Industry	Jan	Feb	Mar	Apr	May	Jun	Jul	Aug	Sep	Oct	Nov	Dec	2010 YTD Avg.	2009 YTD Avg.	2010 vs 2009	% Change
	revised	revised	revised	revised	revised	revised	revised	preliminary								
Total Nonfarm	146,300	147,400	148,400	149,900	151,400	154,800	152,100	153,500					150,475	150,675	-200	-0.13%
Goods Producing	10,900	11,200	11,800	12,300	13,100	14,300	14,600	14,800					12,875	13,300	-425	-3.20%
Services Providing	135,400	136,200	136,600	137,600	138,300	140,500	137,500	138,600					137,588	137,375	213	0.15%
Mining and Logging ²	2,700	2,800	2,700	2,700	2,800	2,800	2,800	2,800					2,763	2,875	-113	-3.91%
Mining	2,700	2,800	2,700	2,700	2,800	2,700	2,700	2,700					2,725	2,875	-150	-5.22%
Oil & Gas	2,700	2,700	2,600	2,700	2,700	2,600	2,600	2,600					2,650	2,725	-75	-2.75%
Construction	6,500	6,800	7,400	7,800	8,500	9,700	9,900	10,100					8,338	8,613	-275	-3.19%
Manufacturing	1,700	1,600	1,700	1,700	1,800	1,900	1,900	1,900					1,775	1,813	-38	-2.07%
Trade/Transportation/Utilities	31,400	31,100	31,300	31,600	32,200	33,100	33,100	33,100					32,113	32,913	-800	-2.43%
Wholesale Trade	4,300	4,300	4,400	4,400	4,400	4,600	4,500	4,500					4,425	4,713	-288	-6.10%
Retail Trade	16,700	16,400	16,500	16,900	17,100	17,300	17,400	17,400					16,963	17,038	-75	-0.44%
Trans/Warehouse/Utilities	10,400	10,400	10,400	10,400	10,700	11,200	11,200	11,200					10,738	11,163	-425	-3.81%
Air Transportation	3,200	3,200	3,200	3,200	3,400	3,300	3,100	3,000					3,200	3,300	-100	-3.03%
Information	3,900	3,900	3,900	3,900	3,900	4,000	4,000	4,000					3,938	4,138	-200	-4.83%
Financial Activities	8,600	8,600	8,700	8,700	8,700	8,900	9,100	9,100					8,800	8,863	-63	-0.71%
Professional & Business Svcs	17,800	18,200	18,200	18,000	18,900	19,200	19,300	19,100					18,588	18,713	-125	-0.67%
Educational & Health Services	21,500	21,400	21,300	21,500	21,400	21,400	21,700	22,100					21,538	20,725	813	3.92%
Health Care	16,000	15,800	15,800	16,100	16,100	16,100	16,200	16,500					16,075	15,525	550	3.54%
Leisure & Hospitality	14,900	15,200	15,200	15,200	15,300	15,700	16,000	16,000					15,438	15,638	-200	-1.28%
Accommodation	3,000	3,000	3,100	2,900	2,900	3,200	3,300	3,300					3,088	3,250	-163	-5.00%
Food Svcs & Drinking Places	9,800	9,900	10,300	10,200	10,400	10,600	10,700	10,700					10,325	10,300	25	0.24%
Other Services	5,700	5,700	5,800	5,800	5,800	6,000	5,900	5,800					5,813	5,750	63	1.09%
Government	31,600	32,100	32,200	32,800	32,000	32,300	28,400	29,400					31,350	30,638	713	2.33%
Federal Government	9,500	9,600	9,700	9,800	10,300	10,300	10,200	9,900					9,913	9,575	338	3.52%
State Government	10,600	10,800	10,800	10,900	10,100	10,500	10,200	10,200					10,513	10,263	250	2.44%
State Education	2,500	2,700	2,700	2,700	1,900	2,000	1,800	2,000					2,288	2,275	13	0.55%
Local Government	11,500	11,700	11,600	12,100	11,600	11,500	8,100	9,200					10,913	10,800	113	1.04%
Local Education	8,500	8,700	8,700	8,600	8,600	8,400	5,000	6,100					7,825	7,500	325	4.33%
Tribal Government ¹	-	-	-	-	-	-	-	-	-	-	-	-	-	-	-	-

- Nonfarm Wage & Salary excludes self-employed workers, fishers, domestics, and unpaid family worker

- Government includes employees of public school systems and the University of Alaska.

- Beginning January 2001, wage and salary employment estimates were published under a new classification system. The Standard Industrial Classification system (SIC) has been replaced by the North American Industry Classification System (NAICS). Data prior to 2001 are comparable only at the Total Nonfarm and Government levels.

¹ As of January 2001, certain federally-recognized tribal entities were moved to Local Government, which created a series break for Total Government and Local Government. Please see the April 2002 Alaska Economic Trends publication for a detailed explanation.

² This category was called "Natural Resources and Mining" in previous years. The change is in name only; the industries it includes remain the same.

- Source: Alaska Department of Labor and Workforce Development, Research and Analysis Section

10 vs 09		
August	-100	-0.07%
10 vs 09		
1st Qtr.	-167	-0.11%
10 vs 09		
2nd Qtr.	-133	-0.09%
10 vs 09		
3rd Qtr.	-350	-0.23%
10 vs 09		
4th Qtr.	=	#VALUE!

[Contact us by Email if you have any questions about the data.](#)



AEDC
Anchorage Economic
Development Corporation

510 L Street, Suite 603
Anchorage, AK 99501

(907) 258-3700

www.aedcweb.com

**Industry Employment Estimates 2010
State of Alaska**

Industry	Jan	Feb	Mar	Apr	May	Jun	Jul	Aug	Sep	Oct	Nov	Dec	2010 YTD	2009 YTD	2010 vs 2009	% Change
	revised	revised	revised	revised	revised	revised	revised	preliminary					Avg.	Avg.		
Total Nonfarm	306,900	311,100	313,600	314,900	325,200	344,100	350,800	340,400					325,875	322,550	3,325	1.03%
Goods Producing	38,700	41,400	42,000	41,000	44,800	54,500	63,200	56,200					47,725	46,000	1,725	3.75%
Services Providing	268,100	269,700	271,600	273,900	280,400	289,600	287,600	284,200					278,138	276,550	1,588	0.57%
Mining and Logging ²	14,300	15,000	15,300	15,600	16,600	17,500	17,800	14,700					15,850	15,488	363	2.34%
Mining	14,200	14,800	14,900	14,300	16,300	17,100	17,400	14,400					15,425	15,275	150	0.98%
Oil & Gas	12,200	12,700	12,600	12,200	12,200	12,000	12,000	12,000					12,238	13,175	-938	-7.12%
Construction	12,300	13,000	13,300	14,700	17,000	19,000	20,000	19,400					16,088	16,113	-25	-0.16%
Manufacturing	12,100	13,400	13,400	10,700	11,200	18,000	25,400	22,100					15,788	14,400	1,388	9.64%
Trade/Transportation/Utilities	60,600	60,500	61,200	61,700	64,500	67,300	68,100	66,000					63,738	63,488	250	0.39%
Wholesale Trade	6,000	6,000	6,100	6,200	6,400	6,700	6,900	6,500					6,350	6,363	-13	-0.20%
Retail Trade	34,900	34,800	35,200	35,600	37,000	37,600	38,400	36,900					36,300	35,488	813	2.29%
Trans/Warehouse/Utilities	19,700	19,700	19,900	19,900	21,100	22,700	22,800	22,600					21,050	21,638	-588	-2.72%
Air Transportation	6,100	5,800	5,700	5,700	5,700	5,600	5,700	5,600					5,738	6,075	-338	-5.56%
Information	6,400	6,400	6,400	6,300	6,400	6,400	6,400	6,400					6,388	6,650	-263	-3.95%
Financial Activities	14,100	13,900	13,800	14,000	13,900	14,000	14,100	15,000					14,100	14,688	-588	-4.00%
Professional & Business Svcs	23,600	23,600	23,700	23,900	24,800	25,500	26,000	26,500					24,700	26,363	-1663	-6.31%
Educational & Health Services	40,100	40,300	40,400	40,100	40,100	39,900	40,600	40,500					40,250	38,788	1463	3.77%
Health Care	29,000	29,200	29,100	29,000	28,800	28,500	28,900	29,200					28,963	27,925	1038	3.72%
Leisure & Hospitality	27,500	27,500	27,800	29,300	33,300	38,000	40,100	36,500					32,500	31,800	700	2.20%
Accommodation	6,100	6,100	6,100	6,600	7,300	10,400	11,600	10,300					8,063	8,088	-25	-0.31%
Food Svcs & Drinking Places	17,600	17,500	17,700	18,400	20,500	22,000	22,800	21,000					19,688	19,050	638	3.35%
Other Services	11,500	11,200	11,100	11,100	11,100	11,100	10,900	11,700					11,213	11,450	-238	-2.07%
Government	84,400	86,300	87,200	87,500	86,300	87,400	81,400	81,600					85,263	83,338	1925	2.31%
Federal Government	16,300	16,500	17,000	17,400	18,800	19,200	19,000	18,400					17,825	17,175	650	3.78%
State Government	25,000	26,100	26,300	26,600	25,000	25,500	24,700	24,700					25,488	25,013	475	1.90%
State Education	7,000	8,000	8,000	8,100	6,600	6,100	5,700	5,900					6,925	6,838	88	1.28%
Local Government	43,100	43,700	43,900	43,500	42,500	42,700	37,700	38,500					41,950	41,138	813	1.98%
Local Education	24,600	25,100	25,100	25,500	24,000	22,900	18,000	19,500					23,088	22,388	700	3.13%
Tribal Government ^f	-	-	-	-	-	-	-	-								

- Nonfarm Wage & Salary excludes self-employed workers, fishers, domestics, and unpaid family workers.

- Government includes employees of public school systems and the University of Alaska.

- Beginning January 2001, wage and salary employment estimates were published under a new classification system. The Standard Industrial Classification system (SIC) has been replaced by the North American Industry Classification System (NAICS). Data prior to 2001 are comparable only at the Total Nonfarm and Government levels.

^f As of January 2001, certain federally-recognized tribal entities were moved to Local Government, which created a series break for Total Government and Local Government. Please see the April 2002 Alaska Economic Trends publication for a detailed explanation.

² This category was called "Natural Resources and Mining" in previous years. The change is in name only; the industries it includes remain the same.

- Source: Alaska Department of Labor and Workforce Development, Research and Analysis Section

10 vs 09		
August	-2,200	-0.68%
10 vs 09		
1st Qtr	4,067	1.33%
10 vs 09		
2nd Qtr.	3,100	0.95%
10 vs 09		
3rd Qtr.	2,550	0.74%
10 vs 09		
4rd Qtr.	0	#DIV/0!



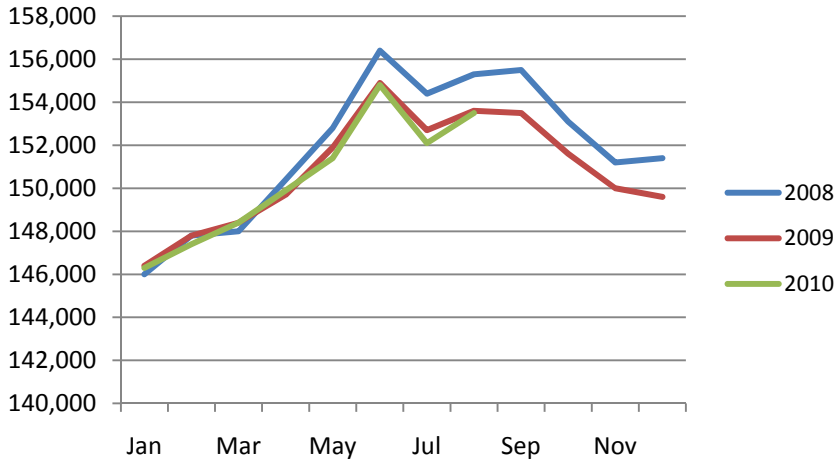
[Contact us by Email if you have any questions about the data.](#)

510 L Street, Suite 603
Anchorage, AK 99501

(907) 258-3700

www.aedcweb.com

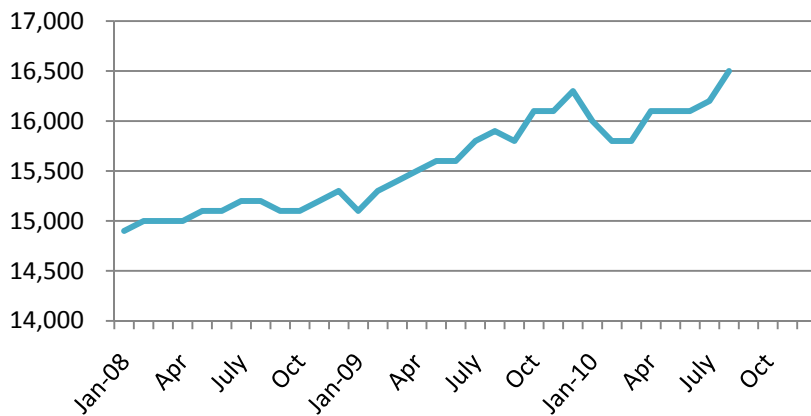
Anchorage Employment



Anchorage's employment picture remains in near lock-step with figures from 2009. While still below the high levels of 2008, the stable numbers suggest Anchorage is in the midst of an economic recovery.

Health Care Employment

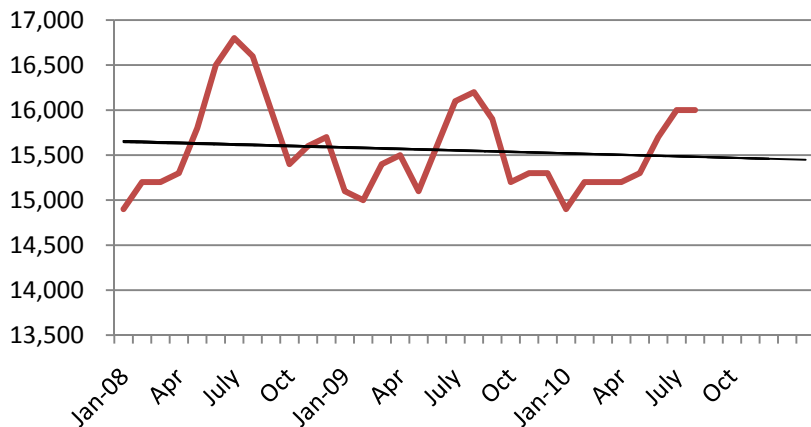
Municipality of Anchorage 2008-Present



Health care and related employment has gained nearly 500 jobs in one year and almost 1,500 jobs in just two years in Anchorage. New developments at Providence Hospital will help sustain this growth for years to come.

Leisure & Hospitality Employment

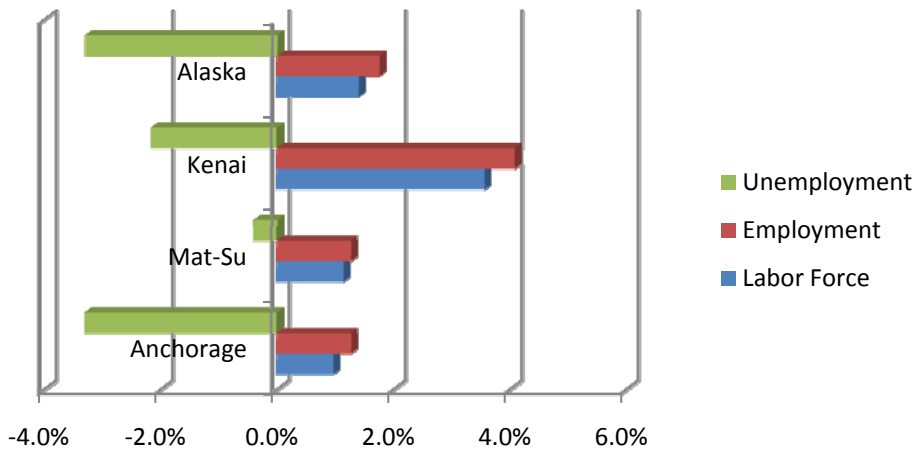
Municipality of Anchorage 2008-Present



Leisure and hospitality employment is a naturally cyclical industry, and 2010 has proved no different. Notably, over the past two years the industry has experienced a slight downward trend in employment, as evidenced by the linear trend line.

Year-over-year Percent Change

August 2009-August 2010



Year over year employment remains strong in all areas covered. The labor force has grown over the year as well. Unemployment has decreased in all areas, with only a slight decrease in Mat-Su. As the tourist season comes to a close, we would expect unemployment to level in the Southcentral region, with consequently more people moving to Anchorage for cold season employment.

Click Bishop
Commissioner

P.O. Box 111149
Juneau, AK 99811-1149

www.labor.alaska.gov

STATE OF ALASKA

DEPARTMENT OF LABOR
AND WORKFORCE DEVELOPMENT

Beth Leschper
Communications Director

907.465.2700
cell: 907.723.1321

beth.leschper@alaska.gov

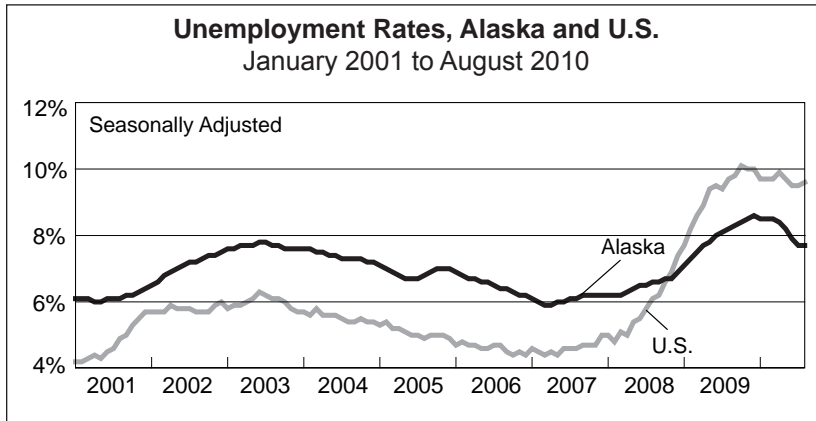
Press Release

September 17, 2010

COMMISSIONER'S OFFICE

No. 10-59

Unemployment rate at 7.7 percent in August



Alaska's seasonally adjusted unemployment rate for August was 7.7 percent. July's preliminary rate did not change—staying at 7.7 percent.

The comparable national jobless rate for August was 9.6 percent, up slightly from 9.5 percent in July. One year ago, the national unemployment rate was 9.7 percent compared to 8.2 percent for Alaska. August was the 22nd consecutive month that Alaska's rate was lower than the nation's.

Not seasonally adjusted unemployment rates increased slightly in August for all six of the state's regions. Last month, the U.S. Bureau of Labor Statistics reported that 192 out of 372 of the nation's metropolitan areas had unemployment rates higher than one year ago. Alaska's metropolitan areas, the Anchorage/Mat-Su MSA and Fairbanks North Star Borough, have less unemployment than one year ago.

In August, the Bristol Bay Borough and Skagway Municipality had the lowest unemployment rates; the Wade Hampton and Bethel census areas had the highest unemployment rates.

The U.S. Department of Labor's Bureau of Labor Statistics has implemented a change to the method used to produce statewide wage and salary employment estimates. That change has resulted in increased monthly volatility in the wage and salary estimates for many states, including Alaska. Therefore, one should be very cautious in interpreting any over-the-year or month-to-month change for these monthly estimates. The Quarterly Census of Employment and Wages series may be a better source of information for trends analysis (<http://labor.alaska.gov/qcew.htm>).

Alaska Nonfarm Payroll Employment¹

	Preliminary 8/10	Revised 7/10	Revised 8/09	Year-over-year change		
				8/09	90% confidence interval ²	
Total Nonfarm Employment ³	340,400	350,800	342,600	-2,200	-9,583	5,183
Mining and Logging	14,700	17,800	15,400	-700	-1,493	93
Oil and Gas	12,000	12,000	12,700	-700	-	-
Construction	19,400	20,000	19,800	-400	-2,983	2,183
Manufacturing	22,100	25,400	20,400	1,700	706	2,694
Seafood Processing	16,500	19,300	16,400	100	-	-
Trade, Transportation and Utilities	66,000	68,100	68,000	-2,000	-4,372	372
Retail Trade	36,900	38,400	37,300	-400	-2,428	1,628
Information	6,400	6,400	6,600	-200	-781	381
Financial Activities	15,000	14,100	15,300	-300	-2,243	1,643
Professional and Business Services	26,500	26,000	27,400	-900	-2,693	893
Educational ⁴ and Health Services	40,500	40,600	39,400	1,100	-168	2,368
Health Care	29,200	28,900	28,500	700	-	-
Leisure and Hospitality	36,500	40,100	37,800	-1,300	-3,337	737
Accommodations	10,300	11,600	10,900	-600	-	-
Food Svcs. and Drinking Places	21,000	22,800	21,200	-200	-	-
Other Services	11,700	10,900	11,700	0	-3,176	3,176
Government ⁵	81,600	81,400	80,800	800	-	-

Notes:

A dash indicates that confidence intervals are not available at this level of detail.

¹ Not seasonally adjusted

² Based on the margin of error of the estimate, a 90 percent confidence interval statistically determines a range of values within which the "true" value falls with a 90 percent level of confidence. For more information, go to <http://labor.alaska.gov/research/c-i.pdf>.

³ Excludes the self-employed, fishermen and other agricultural workers, and private household workers

⁴ Private education only

⁵ Includes public schools, the University of Alaska and federally recognized tribal entities

Unemployment Rates, Seasonally Adjusted

	8/10	7/10	8/09
Alaska	7.7%	7.7%	8.2%
U.S.	9.6%	9.5%	9.7%

Contact: Neal Fried, Economist (907) 269-4861

Research and Analysis' Web site: <http://laborstats.alaska.gov>

Labor Force by Borough and Census Area, Not Seasonally Adjusted¹

	Civilian Labor Force			Unemployed					
	8/10 ^P	7/10	8/09	Number			Rate		
				8/10 ^P	7/10	8/09	8/10 ^P	7/10	8/09
Alaska Statewide	368,342	373,487	366,831	26,174	25,312	26,334	7.1	6.8	7.2
Anchorage/Mat-Su Region	196,188	197,692	192,422	13,378	12,874	13,441	6.8	6.5	7.0
Municipality of Anchorage	154,426	155,561	151,237	10,115	9,665	9,948	6.6	6.2	6.6
Matanuska-Susitna Borough	41,762	42,131	41,185	3,263	3,209	3,493	7.8	7.6	8.5
Gulf Coast Region	41,733	42,282	42,392	3,099	3,014	3,187	7.4	7.1	7.5
Kenai Peninsula Borough	27,778	28,736	28,359	2,312	2,236	2,417	8.3	7.8	8.5
Kodiak Island Borough	7,206	6,860	7,195	415	423	390	5.8	6.2	5.4
Valdez-Cordova Census Area	6,749	6,686	6,838	372	355	380	5.5	5.3	5.6
Interior Region	55,240	55,988	56,056	3,719	3,598	3,773	6.7	6.4	6.7
Denali Borough	2,448	2,215	2,382	82	85	80	3.3	3.8	3.4
Fairbanks North Star Borough	46,244	47,251	47,088	2,936	2,831	3,003	6.3	6.0	6.4
Southeast Fairbanks Census Area	3,710	3,680	3,722	321	306	301	8.7	8.3	8.1
Yukon-Koyukuk Census Area	2,838	2,842	2,864	380	376	389	13.4	13.2	13.6
Northern Region	11,884	11,857	12,034	1,219	1,188	1,127	10.3	10.0	9.4
Nome Census Area	3,831	3,722	3,857	540	539	519	14.1	14.5	13.5
North Slope Borough	5,018	5,076	5,183	276	265	255	5.5	5.2	4.9
Northwest Arctic Borough	3,035	3,059	2,994	403	384	353	13.3	12.6	11.8
Southeast Region	43,745	44,021	44,405	2,631	2,557	2,656	6.0	5.8	6.0
Haines Borough	2,036	2,044	2,050	88	87	99	4.3	4.3	4.8
Hoonah-Angoon Census Area ²	1,497	1,514	1,516	137	141	117	9.2	9.3	7.7
Juneau Borough	18,142	18,529	18,573	989	948	1,012	5.5	5.1	5.4
Ketchikan Gateway Borough ²	9,570	9,712	9,871	529	516	503	5.5	5.3	5.1
Prince of Wales-Outer Ketchikan Census Area ²	2,503	2,539	2,520	327	324	333	13.1	12.8	13.2
Sitka Borough	5,320	5,139	5,109	277	269	278	5.2	5.2	5.4
Skagway Municipality ²	817	821	863	22	17	44	2.7	2.1	5.1
Wrangell-Petersburg Census Area ²	3,511	3,393	3,545	235	229	241	6.7	6.7	6.8
Yakutat Borough	349	330	358	27	26	29	7.7	7.9	8.1
Southwest Region	19,551	21,645	19,525	2,127	2,080	2,151	10.9	9.6	11.0
Aleutians East Borough	1,358	1,428	1,362	84	81	95	6.2	5.7	7.0
Aleutians West Census Area	2,998	3,160	3,022	147	159	163	4.9	5.0	5.4
Bethel Census Area	6,917	7,180	6,858	1,047	1,018	1,023	15.1	14.2	14.9
Bristol Bay Borough	1,815	3,199	1,865	33	30	32	1.8	0.9	1.7
Dillingham Census Area	2,694	2,839	2,658	195	186	206	7.2	6.6	7.8
Lake and Peninsula Borough	1,151	1,448	1,148	71	71	76	6.2	4.9	6.6
Wade Hampton Census Area	2,618	2,391	2,612	550	535	556	21.0	22.4	21.3

P = Preliminary. As more information becomes available, data are revised every month for the previous month and again at the end of every calendar year.

Note: The official definition of unemployment excludes anyone who has not made an active attempt to find work in the four-week period up to and including the week that includes the 12th of the reference month. Many individuals in rural Alaska do not meet the definition because they have not conducted an active job search due to the scarcity of employment opportunities.

¹ Unemployment rates that are not seasonally adjusted should not be compared with those that are.

² Because of the creation of new boroughs, this borough or census area has been changed or no longer exists. Data for the Skagway Municipality and Hoonah-Angoon Census Area (previously the Skagway-Hoonah-Angoon Census Area) became available in 2010. Data for the Wrangell Borough, and Petersburg and Prince of Wales-Hyder census areas will be available in 2011. Until then, data will continue to be published for the old areas.

Source: Alaska Department of Labor and Workforce Development, Research and Analysis Section; U.S. Bureau of Labor Statistics