

## **AEDC October 2010 Employment Report**

### **Executive Summary**

---

The unemployment rate in Anchorage was down 1.3 percentage points in October from its 2010 high of 7.8 percent in March. Overall unemployment has averaged 7 percent in Anchorage YTD, October 2010, which is higher than 2009's 6.6 percent. However, the labor force in Anchorage is bigger YTD, October 2010, compared to 2009 by about 3,000 workers. So even though unemployment is up, the workforce is also larger.

Overall, in Anchorage, jobs are also up for the year. For clarification, the unemployment rate and labor force only counts jobs and people that live and work in the same city, but the Industry Employment Estimates count all jobs within a specified city or region regardless of where a person lives. In October there were 800 more jobs this year than compared to 2009. When looking at the overall averages for the year, jobs are up a tiny bit (10 jobs) but that is not counting for seasonal adjustments or revisions. There is also cautious hope on the horizon because we saw jobs cross back into growth in August of 2010 with the most growth occurring in Government Jobs (up 600, mostly federal jobs) and Healthcare (up 490 jobs).



## Unemployment Analysis (Year-To-Date, 2010)

• Anchorage • Mat-Su Borough • Kenai Peninsula Borough •

	January revised	February revised	March revised	April revised	May revised	June revised	July revised	August revised	September revised	October preliminary	November	December	10 YTD Avg	09 YTD Avg	10 vs 09
<b>Municipality of Anchorage</b>															
Labor Force	158,078	157,990	157,926	157,361	155,500	156,062	155,561	154,498	154,650	157,381			156,501	153,911	2,590
Employment	146,338	145,777	145,654	146,204	144,798	145,440	145,896	144,496	144,307	147,203			145,611	143,729	1,883
Unemployment	11,740	12,213	12,272	11,157	10,702	10,622	9,665	10,002	10,343	10,178			10,889	10,182	707
Rate	7.4%	7.7%	7.8%	7.1%	6.9%	6.8%	6.2%	6.5%	6.8%	6.5%			7.0%	6.6%	0.3%
<b>Mat-Su Borough</b>															
Labor Force	43,919	43,851	43,811	43,166	42,248	42,384	42,131	41,781	41,793	42,815			42,790	42,215	575
Employment	39,039	38,890	38,857	39,004	38,629	38,800	38,922	38,548	38,498	39,270			38,846	38,343	502
Unemployment	4,880	4,961	4,954	4,162	3,619	3,584	3,209	3,233	3,295	3,545			3,944	3,872	73
Rate	11.1%	11.3%	11.3%	9.6%	8.6%	8.5%	7.6%	7.7%	7.9%	8.3%			9.2%	9.2%	0.0%
<b>Kenai Peninsula Borough</b>															
Labor Force	26,574	26,300	26,545	26,781	27,696	28,501	28,736	28,150	27,307	26,452			27,304	26,700	604
Employment	23,151	22,801	23,166	23,840	25,127	26,010	26,500	25,864	24,897	23,917			24,527	23,909	619
Unemployment	3,423	3,499	3,379	2,941	2,569	2,491	2,236	2,286	2,410	2,535			2,777	2,792	(15)
Rate	12.9%	13.3%	12.7%	11.0%	9.3%	8.7%	7.8%	8.1%	8.8%	9.6%			10.2%	10.5%	-0.3%
<b>Southcentral Region Averages</b>															
Labor Force	228,571	228,141	228,282	227,308	225,444	226,947	226,428	224,429	223,750	226,648			226,595	222,826	3,769
Employment	208,528	207,468	207,677	209,048	208,554	210,250	211,318	208,908	207,702	210,390			208,984	205,981	3,004
Unemployment	20,043	20,673	20,605	18,260	16,890	16,697	15,110	15,521	16,048	16,258			17,611	16,845	765
Rate	8.8%	9.1%	9.0%	8.0%	7.5%	7.4%	6.7%	6.9%	7.2%	7.2%			7.8%	7.6%	0.2%

**\*Note:** These numbers reflect employment, unemployment, etc. for only those people that are residence of the specified City/Region, thus are not inclusive of people who commute to another city for their jobs. (Ex: Someone lives in Wasilla but works in Anchorage. They would be counted in the Mat-Su Borough's labor force and employment numbers, not the Municipality of Anchorage numbers)



## Industry Employment Estimates 2010 Municipality of Anchorage

Industry	Jan	Feb	Mar	Apr	May	Jun	Jul	Aug	Sep	Oct	Nov	Dec	2010 YTD Avg.	2009 YTD Avg.	2010 vs 2009 Monthly Avg	% Change
	revised	revised	revised	revised	revised	revised	revised	revised	revised	preliminary						
<b>Total Nonfarm</b>	146,300	147,500	148,400	149,900	151,400	154,800	152,100	153,200	154,600	152,400			151,060	151,050	10	0.01%
Goods Producing	10,900	11,100	11,800	12,300	13,100	14,300	14,600	14,700	14,200	13,400			13,040	13,390	-350	-2.61%
Services Providing	135,400	136,300	136,600	137,600	138,300	140,500	137,500	138,500	140,400	139,100			138,020	137,660	360	0.26%
Mining and Logging <sup>2</sup>	2,700	2,800	2,700	2,700	2,800	2,800	2,800	2,800	2,900	2,700			2,770	2,850	-80	-2.81%
Mining	2,700	2,800	2,700	2,700	2,800	2,700	2,700	2,700	2,900	2,700			2,740	2,850	-110	-3.86%
Oil & Gas	2,700	2,700	2,600	2,700	2,700	2,600	2,600	2,600	2,700	2,500			2,640	2,710	-70	-2.58%
Construction	6,500	6,800	7,400	7,800	8,500	9,700	9,900	10,000	9,400	8,800			8,480	8,740	-260	-2.97%
Manufacturing	1,700	1,600	1,700	1,700	1,800	1,900	1,900	1,900	2,000	1,900			1,810	1,800	10	0.56%
Trade/Transportation/Utilities	31,400	31,200	31,300	31,600	32,200	33,100	33,100	33,000	33,300	32,500			32,270	32,970	-700	-2.12%
Wholesale Trade	4,300	4,300	4,400	4,400	4,400	4,600	4,500	4,500	4,600	4,500			4,450	4,700	-250	-5.32%
Retail Trade	16,700	16,400	16,500	16,900	17,100	17,300	17,400	17,400	17,500	17,500			17,070	17,130	-60	-0.35%
Trans/Warehouse/Utilities	10,400	10,400	10,400	10,400	10,700	11,200	11,200	11,100	11,200	10,600			10,760	11,140	-380	-3.41%
Air Transportation	3,200	3,200	3,200	3,200	3,400	3,300	3,100	3,000	3,000	3,000			3,160	3,280	-120	-3.66%
Information	3,900	3,900	3,900	3,900	3,900	4,000	4,000	4,000	4,000	4,000			3,950	4,110	-160	-3.89%
Financial Activities	8,600	8,600	8,700	8,700	8,700	8,900	9,100	9,100	9,000	8,700			8,810	8,830	-20	-0.23%
Professional & Business Svcs	17,800	18,200	18,200	18,000	18,900	19,200	19,300	19,100	18,700	18,500			18,590	18,690	-100	-0.54%
Educational & Health Services	21,500	21,400	21,300	21,500	21,400	21,400	21,700	22,000	21,900	22,200			21,630	20,830	800	3.84%
Health Care	16,000	15,800	15,800	16,100	16,100	16,100	16,200	16,400	16,200	16,300			16,100	15,610	490	3.14%
Leisure & Hospitality	14,900	15,200	15,200	15,200	15,300	15,700	16,000	16,200	15,900	15,300			15,490	15,620	-130	-0.83%
Accommodation	3,000	3,000	3,100	2,900	2,900	3,200	3,300	3,400	3,400	3,100			3,130	3,230	-100	-3.10%
Food Svcs & Drinking Places	9,800	9,900	10,300	10,200	10,400	10,600	10,700	10,800	10,700	10,500			10,390	10,330	60	0.58%
Other Services	5,700	5,700	5,800	5,800	5,800	6,000	5,900	5,800	5,800	5,800			5,810	5,740	70	1.22%
<b>Government</b>	31,600	32,100	32,200	32,800	32,000	32,300	28,400	29,200	32,000	32,100			31,470	30,870	600	1.94%
Federal Government	9,500	9,600	9,700	9,800	10,300	10,300	10,200	9,900	9,800	9,600			9,870	9,570	300	3.13%
State Government	10,600	10,800	10,800	10,900	10,100	10,500	10,200	10,200	11,100	11,200			10,640	10,380	260	2.50%
State Education	2,500	2,700	2,700	2,700	1,900	2,000	1,800	2,000	2,800	2,900			2,400	2,360	40	1.69%
Local Government	11,500	11,700	11,600	12,100	11,600	11,500	8,100	9,000	11,100	11,300			10,950	10,920	30	0.27%
Local Education	8,500	8,700	8,700	8,600	8,600	8,400	5,000	6,100	8,400	8,400			7,940	7,660	280	3.66%
Tribal Government <sup>1</sup>	0	0	0	0	0	0	0	0	0	0			-	-		

- Nonfarm Wage & Salary excludes self-employed workers, fishers, domestics, and unpaid family workers.

- Government includes employees of public school systems and the University of Alaska.

- Beginning January 2001, wage and salary employment estimates were published under a new classification system. The Standard Industrial Classification system (SIC) has been replaced by the North American Industry Classification System (NAICS). Data prior to 2001 are comparable only at the Total Nonfarm and Government levels.

<sup>1/</sup> As of January 2001, certain federally-recognized tribal entities were moved to Local Government, which created a series break for Total Government and Local Government. [Please see the April 2002 Alaska Economic Trends publication for a detailed explanation.](#)

<sup>2/</sup> This category was called "Natural Resources and Mining" in previous years. The change is in name only; the industries it includes remain the same.

- Source: Alaska Department of Labor and Workforce Development, Research and Analysis Section

Quick Comparisons		
10 vs 09		
October	800	0.53%
10 vs 09		
1st Qtr	-133	-0.09%
10 vs 09 2nd		
Qtr.	-133	-0.09%
10 vs 09 3rd		
Qtr.	33	0.02%
10 vs 09 4th		
Qtr. YTD	800	0.53%

\* **Note:** The above numbers are representative of all people employed in the Municipality of Anchorage, this is inclusive of workers who claim residence outside of the Municipality of Anchorage. (Ex: someone who lives in the Mat-Su, but works in Anchorage would be included in these number)



## Industry Employment Estimates 2010 State of Alaska

Industry	Jan	Feb	Mar	Apr	May	Jun	Jul	Aug	Sep	Oct	Nov	Dec	2010 YTD Avg.	2009 YTD Avg.	2010 vs 2009 Monthly Avg	% Change
	revised	revised	revised	revised	revised	revised	revised	revised	revised	preliminary						
<b>Total Nonfarm</b>	306,800	311,200	313,600	314,900	325,200	344,100	350,800	346,500	333,100	319,000			326,520	323,480	3,040	0.94%
Goods Producing	38,700	41,400	42,000	41,000	44,800	54,500	63,200	60,700	49,300	43,000			47,860	45,890	1,970	4.29%
Services Providing	268,100	269,800	271,600	273,900	280,400	289,600	287,600	285,800	283,800	276,000			278,660	277,590	1,070	0.39%
Mining and Logging <sup>2</sup>	14,300	15,000	15,300	15,600	16,600	17,500	17,800	17,900	14,600	14,600			15,920	15,390	530	3.44%
Mining	14,200	14,800	14,900	14,300	16,300	17,100	17,400	17,500	14,200	14,200			15,490	15,160	330	2.18%
Oil & Gas	12,200	12,700	12,600	12,200	12,200	12,000	12,000	12,000	11,600	11,800			12,130	13,030	-900	-6.91%
Construction	12,300	13,000	13,300	14,700	17,000	19,000	20,000	20,100	18,400	16,700			16,450	16,500	-50	-0.30%
Manufacturing	12,100	13,400	13,400	10,700	11,200	18,000	25,400	22,700	16,300	11,700			15,490	14,000	1,490	10.64%
Seafood Processing	8,100	9,400	8,400	7,700	6,900	11,900	19,300	18,300	11,800	7,400			10,920	10,210	710	6.95%
Trade/Transportation/Utilities	60,600	60,600	61,200	61,700	64,500	67,300	68,100	67,500	64,000	60,900			63,640	63,660	-20	-0.03%
Wholesale Trade	6,000	6,000	6,100	6,200	6,400	6,700	6,900	6,900	6,300	6,000			6,350	6,340	10	0.16%
Retail Trade	34,900	34,800	35,200	35,600	37,000	37,900	38,400	37,800	35,600	34,800			36,200	35,630	570	1.60%
Food & Beverage Stores	6,300	6,500	6,400	6,400	6,500	6,700	7,000	6,700	6,100	6,000			6,460	6,350	110	1.73%
General Merchandise Stores	9,900	10,000	10,000	10,200	10,300	10,000	10,500	10,500	10,100	10,000			10,150	9,870	280	2.84%
Trans/Warehouse/Utilities	19,700	19,800	19,900	19,900	21,100	22,700	22,800	22,800	22,100	20,100			21,090	21,690	-600	-2.77%
Air Transportation	6,100	5,800	5,700	5,700	5,700	5,600	5,700	5,600	5,600	5,400			5,690	6,090	-400	-6.57%
Truck Transportation	2,900	2,900	3,000	2,900	2,900	3,000	3,200	3,300	3,100	2,900			3,010	3,130	-120	-3.83%
Information	6,400	6,400	6,400	6,300	6,400	6,400	6,400	6,400	6,300	6,400			6,380	6,620	-240	-3.63%
Telecommunications	4,200	4,400	4,200	4,100	4,200	4,200	4,300	4,200	4,200	4,300			4,230	4,330	-100	-2.31%
Financial Activities	14,100	13,900	13,800	14,000	13,900	14,000	14,100	14,000	14,900	14,600			14,130	14,730	-600	-4.07%
Professional & Business Svcs	23,500	23,600	23,700	23,900	24,800	25,500	26,000	25,600	26,200	25,200			24,800	26,350	-1,550	-5.88%
Educational & Health Services	40,100	40,300	40,400	40,100	40,100	39,900	40,600	40,000	41,600	41,900			40,500	38,970	1,530	3.93%
Health Care	29,000	29,200	29,100	29,000	28,800	28,500	28,900	28,700	30,400	30,400			29,200	28,070	1,130	4.03%
Leisure & Hospitality	27,500	27,500	27,800	29,300	33,300	38,000	40,100	39,800	32,500	28,900			32,470	31,930	540	1.69%
Accommodation	6,100	6,100	6,100	6,600	7,300	10,400	11,600	11,700	8,900	6,400			8,120	8,040	80	1.00%
Food Svcs & Drinking Places	17,600	17,500	17,700	18,400	20,500	22,000	22,800	22,500	19,000	18,700			19,670	19,070	600	3.15%
Other Services	11,500	11,200	11,100	11,100	11,100	11,100	10,900	11,100	11,700	11,800			11,260	11,470	-210	-1.83%
Government	84,400	86,300	87,200	87,500	86,300	87,400	81,400	81,400	86,600	86,300			85,480	83,860	1,620	1.93%
Federal Government	16,300	16,500	17,000	17,400	18,800	19,200	19,000	18,300	17,500	16,400			17,640	17,150	490	2.86%
State Government	25,000	26,100	26,300	26,600	25,000	25,500	24,700	24,700	26,600	26,400			25,690	25,240	450	1.78%
State Education	7,000	8,000	8,000	8,100	6,600	6,100	5,700	5,900	8,100	8,200			7,170	7,040	130	1.85%
Local Government	43,100	43,700	43,900	43,500	42,500	42,700	37,700	38,400	42,500	43,500			42,150	41,470	680	1.64%
Local Education	24,600	25,100	25,100	25,500	24,000	22,900	18,000	19,500	24,300	25,800			23,480	22,740	740	3.25%
Tribal Government <sup>1</sup>	3,500	3,700	3,700	3,600	3,700	4,100	4,100	3,900	3,900	3,900			3,810	3,690	120	3.25%

- Nonfarm Wage & Salary excludes self-employed workers, fishers, domestics, and unpaid family workers.

- Government includes employees of public school systems and the University of Alaska.

- Beginning January 2001, wage and salary employment estimates were published under a new classification system. The Standard Industrial Classification system (SIC) has been replaced by the North American Industry Classification System (NAICS). Data prior to 2001 are comparable only at the Total Nonfarm and Government levels.

<sup>1/</sup> As of January 2001, certain federally-recognized tribal entities were moved to Local Government, which created a series break for Total Government and Local Government. [Please see the April 2002 Alaska Economic Trends publication for a detailed explanation.](#)

<sup>2/</sup> This category was called "Natural Resources and Mining" in previous years. The change is in name only; the industries it includes remain the same.

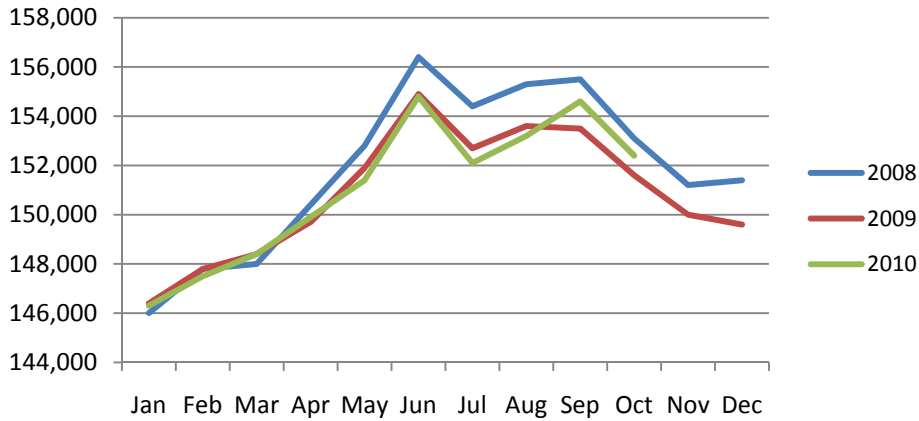
- Source: Alaska Department of Labor and Workforce Development, Research and Analysis Section

### Quick Comparisons

<b>10 vs 09</b>		
<b>October</b>	-1,000	-0.31%
<b>10 vs 09 1st</b>		
<b>Qtr</b>	4,067	1.33%
<b>10 vs 09 2nd</b>		
<b>Qtr.</b>	3,167	0.97%
<b>10 vs 09</b>		
<b>3rd Qtr.</b>	3,233	0.95%
<b>10 vs 09</b>		
<b>4rd Qtr YTD</b>	-1000	-0.31%

## Anchorage Employment

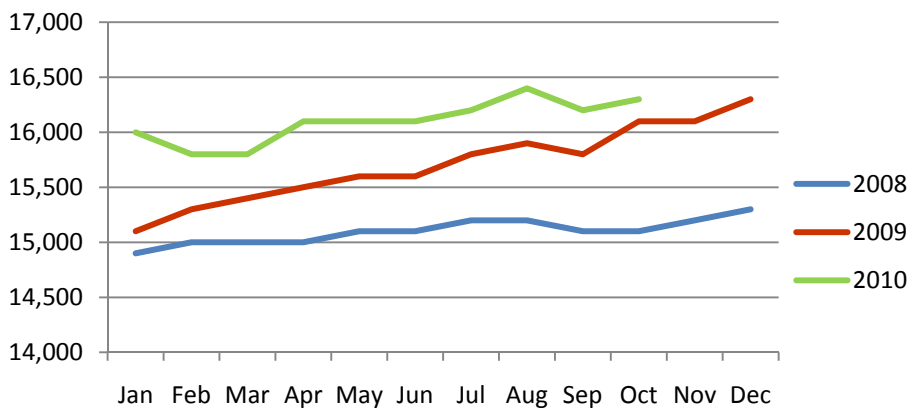
Municipality of Anchorage 2008-Present



Preliminary numbers for Anchorage's employment show an average increase of 10 jobs for YTD October 2010 compared to the same period in 2009, with a month-to-month (Oct. 10 vs. Oct. 09) comparison showing an increase of 800 jobs and a decrease of 2,200 jobs from September to October 2010. The decrease of jobs seem from Sept. to Oct. is a natural part of the seasonal employment cycle. While still below the highs of 2008, this is the second month of 2010 employment levels have been significantly up over 2009 levels.

## Health Care Employment

Municipality of Anchorage 2008-Present

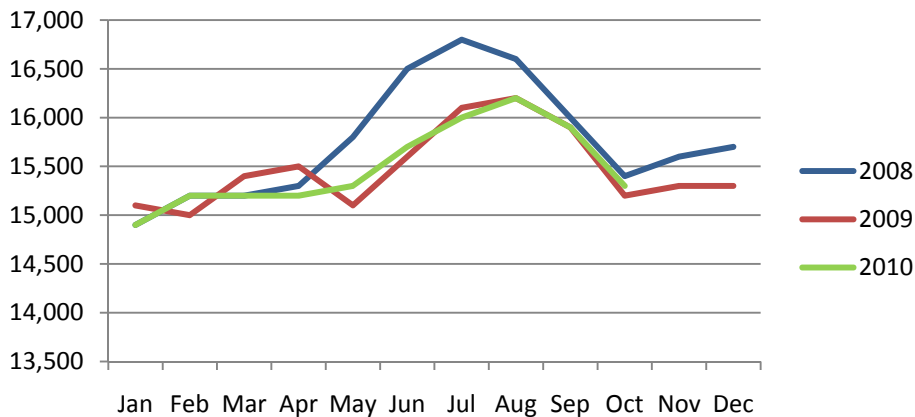


According to preliminary numbers for health care and related employment there was an increase of 100 jobs from September to October 2010. On average for YTD October 2010 compared to October 2009 health care is up 490 jobs and comparing just October 2010 to October 2009 this sector is up 100 jobs. We expect growth from this sector to continue for the remainder of 2010.



## Leisure & Hospitality Employment

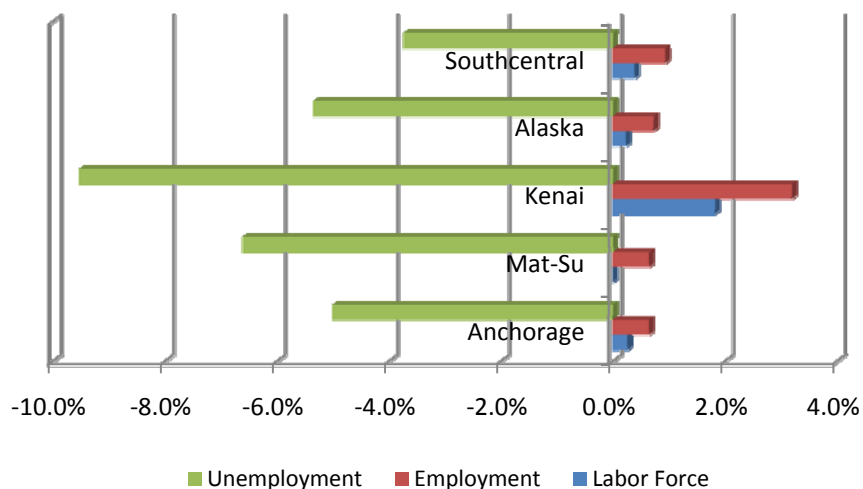
Municipality of Anchorage 2008-Present



Leisure and hospitality employment is a naturally cyclical industry, and 2010 has proved no different. On average year-over-year this sector is down 130 jobs however, October 2010 has shown a growth of 100 jobs over October 2009. This is the second consistent month jobs for this sector have been up over 2009 numbers. While still not at the highs of 2008, this consistency is a definite improvement over 2009.

## Year-over-year Percent Change

October 2009-October 2010



Year over year employment remains strong in all areas covered. The labor force has grown over the year and unemployment has decreased in all geographic areas. The Kenai and Mat-Su are leading the state in decreased unemployment. It is interesting to see that the overall labor force has decreased from Sept. to Oct. However, this is probably indicative of the seasonal workforce that comes to Alaska to work in tourism and fish processing in the summer.

Click Bishop  
Commissioner

P.O. Box 111149  
Juneau, AK 99811-1149  
www.labor.alaska.gov



Beth Leschper  
Communications Director

907.465.2700  
cell: 907.723.1321  
beth.leschper@alaska.gov

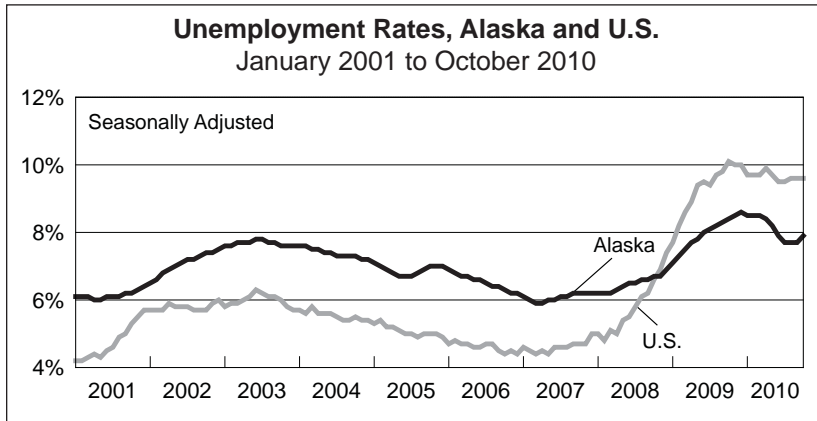
## Press Release

November 19, 2010

COMMISSIONER'S OFFICE

No. 10-72

### Unemployment rate at 7.9 percent in October



Alaska's seasonally adjusted unemployment rate for October inched up to 7.9 percent. September's rate was revised down slightly, from 7.8 percent to 7.7 percent.

The comparable national jobless rate for October was 9.6 percent, unchanged from September. Exactly a year ago, the national unemployment rate was 10.1 percent, compared to 8.4 percent for Alaska. The improvement in Alaska's jobless rate has been similar to the nation's, but October marks the second straight year that Alaska's unemployment rate has been lower than the national rate.

#### Alaska Nonfarm Payroll Employment<sup>1</sup>

	Preliminary 10/10	Revised 9/10	Revised 10/09	Year-over-year change		
				10/09	90% confi- dence interval <sup>2</sup>	
Total Nonfarm Employment <sup>3</sup>	319,000	333,100	320,000	-1,000	-8,383	6,383
Mining and Logging	14,600	14,600	15,000	-400	-1,193	393
Oil and Gas	11,800	11,600	12,500	-700	-	-
Construction	16,700	18,400	17,400	-700	-3,283	1,883
Manufacturing	11,700	16,300	10,400	1,300	306	2,294
Seafood Processing	7,400	11,800	6,400	1,000	-	-
Trade, Transportation, and Utilities	60,900	64,000	62,600	-1,700	-4,072	672
Retail Trade	34,800	35,600	35,700	-900	-2,928	1,128
Information	6,400	6,300	6,500	-100	-681	481
Financial Activities	14,600	14,900	15,000	-400	-2,343	1,543
Professional and Business Services	25,200	26,200	25,600	-400	-2,193	1,393
Educational <sup>4</sup> and Health Services	41,900	41,600	39,900	2,000	732	3,268
Health Care	30,400	30,400	28,900	1,500	-	-
Leisure and Hospitality	28,900	32,500	29,700	-800	-2,837	1,237
Accommodations	6,400	8,900	6,000	400	-	-
Food Svcs. and Drinking Places	18,700	19,000	17,900	800	-	-
Other Services	11,800	11,700	11,600	200	-2,976	3,376
Government <sup>5</sup>	86,300	86,600	86,300	0	-	-

Not seasonally adjusted unemployment rates increased in most of the state's regions in October. This is typical in October, when Alaska's labor market enters its winter slump. Fishing declines, the visitor industry is nearly shuttered, and the construction industry buttons down for mostly indoor work.

The U.S. Department of Labor's Bureau of Labor Statistics has implemented a change to the method used to produce statewide wage and salary employment estimates. That change has resulted in increased monthly volatility in the wage and salary estimates for many states, including Alaska. Therefore, one should be very cautious in interpreting any over-the-year or month-to-month change for these monthly estimates. The Quarterly Census of Employment and Wages series may be a better source of information for trends analysis (<http://labor.alaska.gov/qcew.htm>).

Contact: Neal Fried, Economist (907) 269-4861  
Research and Analysis' Web site: <http://laborstats.alaska.gov>

#### Unemployment Rates, Seasonally Adjusted

	10/10	9/10	10/09
Alaska	7.9%	7.7%	8.4%
U.S.	9.6%	9.6%	10.1%

## Labor Force by Borough and Census Area, Not Seasonally Adjusted<sup>1</sup>

	Civilian Labor Force			Unemployed					
	10/10 <sup>P</sup>	9/10	10/09	Number			Rate		
				10/10 <sup>P</sup>	9/10	10/09	10/10 <sup>P</sup>	9/10	10/09
<b>Alaska Statewide</b>	<b>361,040</b>	<b>363,641</b>	<b>360,169</b>	<b>27,267</b>	<b>26,481</b>	<b>28,807</b>	<b>7.6</b>	<b>7.3</b>	<b>8.0</b>
<b>Anchorage/Mat-Su Region</b>	<b>200,196</b>	<b>196,443</b>	<b>199,777</b>	<b>13,723</b>	<b>13,638</b>	<b>14,510</b>	<b>6.9</b>	<b>6.9</b>	<b>7.3</b>
Municipality of Anchorage	157,381	154,650	156,965	10,178	10,343	10,714	6.5	6.7	6.8
Matanuska-Susitna Borough	42,815	41,793	42,812	3,545	3,295	3,796	8.3	7.9	8.9
<b>Gulf Coast Region</b>	<b>38,163</b>	<b>40,546</b>	<b>37,727</b>	<b>3,446</b>	<b>3,186</b>	<b>3,705</b>	<b>9.0</b>	<b>7.9</b>	<b>9.8</b>
Kenai Peninsula Borough	26,452	27,307	26,391	2,535	2,410	2,753	9.6	8.8	10.4
Kodiak Island Borough	6,716	7,172	6,427	439	390	470	6.5	5.4	7.3
Valdez-Cordova Census Area	4,995	6,067	4,909	472	386	482	9.4	6.4	9.8
<b>Interior Region</b>	<b>54,132</b>	<b>55,037</b>	<b>53,871</b>	<b>3,974</b>	<b>3,753</b>	<b>4,241</b>	<b>7.3</b>	<b>6.8</b>	<b>7.9</b>
Denali Borough	946	2,068	888	138	85	153	14.6	4.1	17.2
Fairbanks North Star Borough	46,494	46,346	46,487	3,081	2,942	3,316	6.6	6.3	7.1
Southeast Fairbanks Census Area	3,650	3,677	3,570	350	333	349	9.6	9.1	9.8
Yukon-Koyukuk Census Area	3,042	2,946	2,926	405	393	423	13.3	13.3	14.5
<b>Northern Region</b>	<b>12,355</b>	<b>11,953</b>	<b>12,445</b>	<b>1,163</b>	<b>1,176</b>	<b>1,141</b>	<b>9.4</b>	<b>9.8</b>	<b>9.2</b>
Nome Census Area	4,197	3,995	4,080	500	504	494	11.9	12.6	12.1
North Slope Borough	5,002	5,035	5,407	273	274	285	5.5	5.4	5.3
Northwest Arctic Borough	3,156	2,923	2,958	390	398	362	12.4	13.6	12.2
<b>Southeast Region</b>	<b>38,880</b>	<b>41,575</b>	<b>39,177</b>	<b>2,872</b>	<b>2,588</b>	<b>3,068</b>	<b>7.4</b>	<b>6.2</b>	<b>7.8</b>
Haines Borough	1,403	1,848	1,262	113	89	122	8.1	4.8	9.7
Hoonah-Angoon Census Area <sup>2</sup>	951	1,347	1,113	131	135	204	13.8	10.0	18.3
City and Borough of Juneau	18,013	18,253	18,332	1,044	975	1,139	5.8	5.3	6.2
Ketchikan Gateway Borough <sup>2</sup>	7,988	8,905	8,072	597	532	592	7.5	6.0	7.3
Prince of Wales-Outer Ketchikan Census Area <sup>2</sup>	2,367	2,349	2,396	309	311	335	13.1	13.2	14.0
City and Borough of Sitka	4,492	4,814	4,432	278	264	306	6.2	5.5	6.9
Skagway Municipality <sup>2</sup>	603	738	613	123	29	81	20.4	3.9	13.2
Wrangell-Petersburg Census Area <sup>2</sup>	2,765	2,977	2,613	252	230	260	9.1	7.7	10.0
Yakutat Borough	298	344	344	25	23	29	8.4	6.7	8.4
<b>Southwest Region</b>	<b>17,313</b>	<b>18,086</b>	<b>17,170</b>	<b>2,089</b>	<b>2,141</b>	<b>2,140</b>	<b>12.1</b>	<b>11.8</b>	<b>12.5</b>
Aleutians East Borough	1,040	1,135	1,057	84	88	105	8.1	7.8	9.9
Aleutians West Census Area	2,558	2,460	2,949	208	192	292	8.1	7.8	9.9
Bethel Census Area	7,369	7,023	7,041	990	1,039	933	13.4	14.8	13.3
Bristol Bay Borough	585	1,157	484	37	35	31	6.3	3.0	6.4
Dillingham Census Area	1,897	2,289	1,926	193	196	201	10.2	8.6	10.4
Lake and Peninsula Borough	1,094	1,244	1,064	75	71	72	6.9	5.7	6.8
Wade Hampton Census Area	2,770	2,778	2,649	502	520	506	18.1	18.7	19.1

P = Preliminary. As more information becomes available, data are revised every month for the previous month and again at the end of every calendar year.

Note: The official definition of unemployment excludes anyone who has not made an active attempt to find work in the four-week period up to and including the week that includes the 12th of the reference month. Many individuals in rural Alaska do not meet the definition because they have not conducted an active job search due to the scarcity of employment opportunities.

<sup>1</sup> Unemployment rates that are not seasonally adjusted should not be compared with those that are.

<sup>2</sup> Because of the creation of new boroughs, this borough or census area has been changed or no longer exists. Data for the Skagway Municipality and Hoonah-Angoon Census Area (previously the Skagway-Hoonah-Angoon Census Area) became available in 2010. Data for the Wrangell Borough, and Petersburg and Prince of Wales-Hyder census areas will be available in 2011. Until then, data will continue to be published for the old areas.

Source: Alaska Department of Labor and Workforce Development, Research and Analysis Section; U.S. Bureau of Labor Statistics