

Anchorage Crime Statistics



Table of Contents:

Reported Crime Totals and Rates, Anchorage, 1985-2010.....	246
Violent Crime Rate, Anchorage, Alaska & U.S., 1985-2010.....	247
Murder and Nonnegligent Manslaughter Rate, Anchorage, Alaska & U.S., 1985-2010.....	247
Forcible Rape Rate, Anchorage, Alaska & U.S., 1985-2010	248
Robbery Rate, Anchorage, Alaska & U.S., 1985-2010	248
Aggravated Assault Rate, Anchorage, Alaska & U.S., 1985-2010	249
Property Crime Rate, Anchorage, Alaska & U.S., 1985-2010	249
Burglary Rate, Anchorage, Alaska & U.S., 1985-2010.....	250
Larceny-Theft Rate, Anchorage, Alaska & U.S., 1985-2010.....	250
Motor Vehicle Theft Rate, Anchorage, Alaska & U.S., 1985-2010.....	251

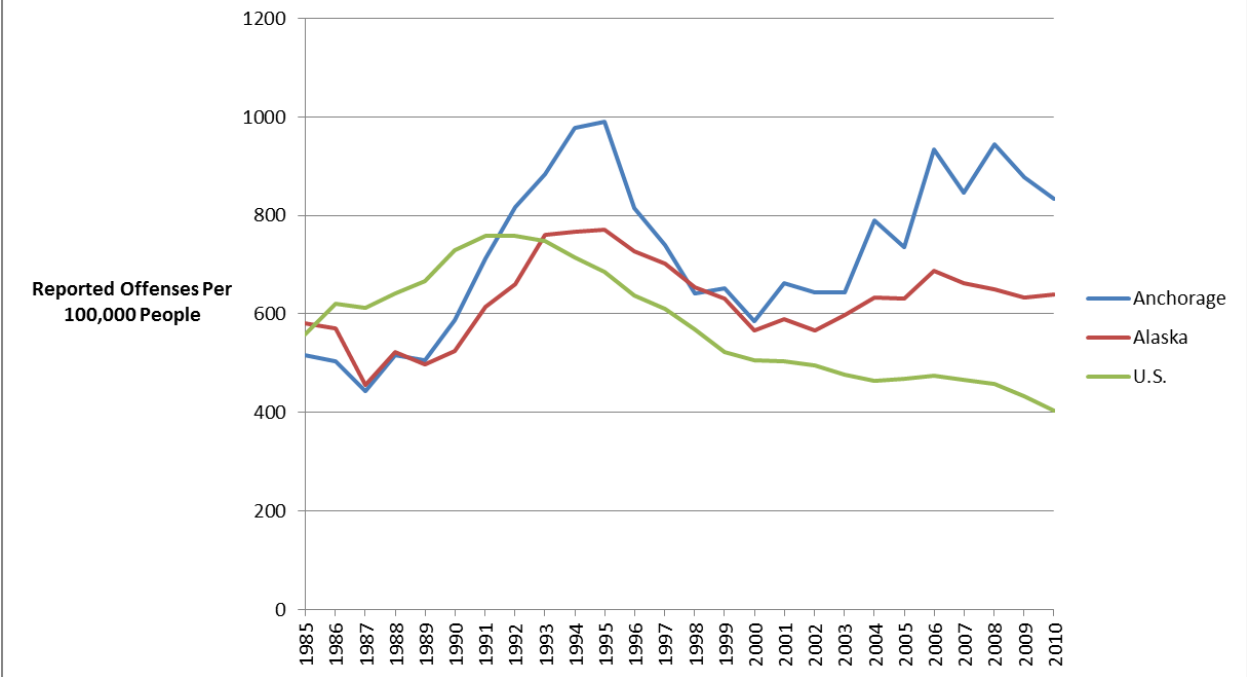


Reported Crime Totals and Rates, Anchorage, 1985-2010

Year	Totals										Rates									
	Population	Violent Crime Total	Murder and Nonnegligent Manslaughter	Forcible Rape	Robbery	Aggravated Assault	Property Crime Total	Burglary	Larceny- Theft	Motor Vehicle Theft	Violent Crime	Murder and Nonnegligent Manslaughter	Forcible Rape	Robbery	Aggravated Assault	Property Crime	Burglary	Larceny- Theft	Motor Vehicle Theft	
1985	229,579	1,184	14	193	371	606	13,438	2,892	9,154	1,392	515.7	6.1	84.1	161.6	264.0	5,853.3	1,259.7	3,987.3	606.3	
1986	238,235	1,198	17	167	330	684	15,281	2,824	11,071	1,386	502.9	7.1	70.1	138.5	287.1	6,414.3	1,185.4	4,647.1	581.8	
1987	231,039	1,025	15	154	285	571	12,721	2,113	9,491	1,117	443.6	6.5	66.7	123.4	247.1	5,506.0	914.6	4,108.0	483.5	
1988	217,429	1,122	13	159	281	669	11,412	1,890	8,340	1,182	516.0	6.0	73.1	129.2	307.7	5,248.6	869.2	3,835.7	543.6	
1989	223,363	1,131	11	139	272	709	11,085	1,708	8,219	1,158	506.4	4.9	62.2	121.8	317.4	4,962.8	764.7	3,679.7	518.4	
1990	226,338	1,330	10	203	350	767	11,677	2,060	8,083	1,534	587.6	4.4	89.7	154.6	338.9	5,159.1	910.1	3,571.2	677.7	
1991	234,571	1,669	25	264	542	838	14,017	2,489	9,967	1,561	711.5	10.7	112.5	231.1	357.2	5,975.6	1,061.1	4,249.0	665.5	
1992	241,565	1,971	17	253	484	1,217	15,074	2,650	10,813	1,611	815.9	7.0	104.7	200.4	503.8	6,240.1	1,097.0	4,476.2	666.9	
1993	250,720	2,213	23	212	568	1,410	13,927	1,880	10,660	1,387	882.7	9.2	84.6	226.5	562.4	5,554.8	749.8	4,251.8	553.2	
1994	253,667	2,478	22	198	729	1,529	16,184	2,276	11,717	2,191	976.9	8.7	78.1	287.4	602.8	6,380.0	897.2	4,619.0	863.7	
1995	253,500	2,510	29	242	777	1,462	15,795	2,521	11,152	2,122	990.1	11.4	95.5	306.5	576.7	6,230.8	994.5	4,399.2	837.1	
1996	254,774	2,078	25	198	558	1,297	14,100	2,353	10,163	1,584	815.6	9.8	77.7	219.0	509.1	5,534.3	923.6	3,989.0	621.7	
1997	255,634	1,889	23	174	501	1,191	13,376	1,931	10,083	1,362	738.9	9.0	68.1	196.0	465.9	5,232.5	755.4	3,944.3	532.8	
1998	254,250	1,632	19	184	373	1,056	11,732	1,617	8,834	1,281	641.9	7.5	72.4	146.7	415.3	4,614.4	636.0	3,474.5	503.8	
1999	257,762	1,683	19	160	398	1,106	11,265	1,543	8,471	1,251	652.9	7.4	62.1	154.4	429.1	4,370.3	598.6	3,286.4	485.3	
2000	260,283	1,524	10	195	346	973	11,342	1,533	8,799	1,010	585.5	3.8	74.9	132.9	373.8	4,357.6	589.0	3,380.6	388.0	
2001	263,588	1,748	10	210	384	1,144	11,466	1,606	8,648	1,212	663.2	3.8	79.7	145.7	434.0	4,350.0	609.3	3,280.9	459.8	
2002	267,280	1,721	18	254	382	1,067	11,949	1,521	9,255	1,173	643.9	6.7	95.0	142.9	399.2	4,470.6	569.1	3,462.7	438.9	
2003	271,085	1,744	17	244	340	1,143	11,706	1,418	9,091	1,197	643.3	6.3	90.0	125.4	421.6	4,318.2	523.1	3,353.6	441.6	
2004	273,714	2,164	15	263	331	1,555	9,901	1,523	7,354	1,024	790.6	5.5	96.1	120.9	568.1	3,617.3	556.4	2,686.7	374.1	
2005	276,109	2,031	16	224	384	1,407	11,365	1,783	8,248	1,334	735.6	5.8	81.1	139.1	509.6	4,116.1	645.8	2,987.2	483.1	
2006	277,692	2,592	17	248	465	1,862	11,721	1,733	8,543	1,445	933.4	6.1	89.3	167.5	670.5	4,220.9	624.1	3,076.4	520.4	
2007	284,142	2,405	22	257	453	1,673	11,107	1,454	8,397	1,256	846.4	7.7	90.4	159.4	588.8	3,909.0	511.7	2,955.2	442.0	
2008	280,068	2,647	10	263	544	1,830	9,211	1,191	7,254	766	945.1	3.6	93.9	194.2	653.4	3,288.8	425.3	2,590.1	273.5	
2009	283,300	2,488	14	282	534	1,658	10,316	1,613	7,835	868	878.2	4.9	99.5	188.5	585.2	3,641.4	569.4	2,765.6	306.4	
2010	291,826	2,432	13	264	454	1,701	10,214	1,223	8,178	813	833.4	4.5	90.5	155.6	582.9	3,500.0	419.1	2,802.4	278.6	

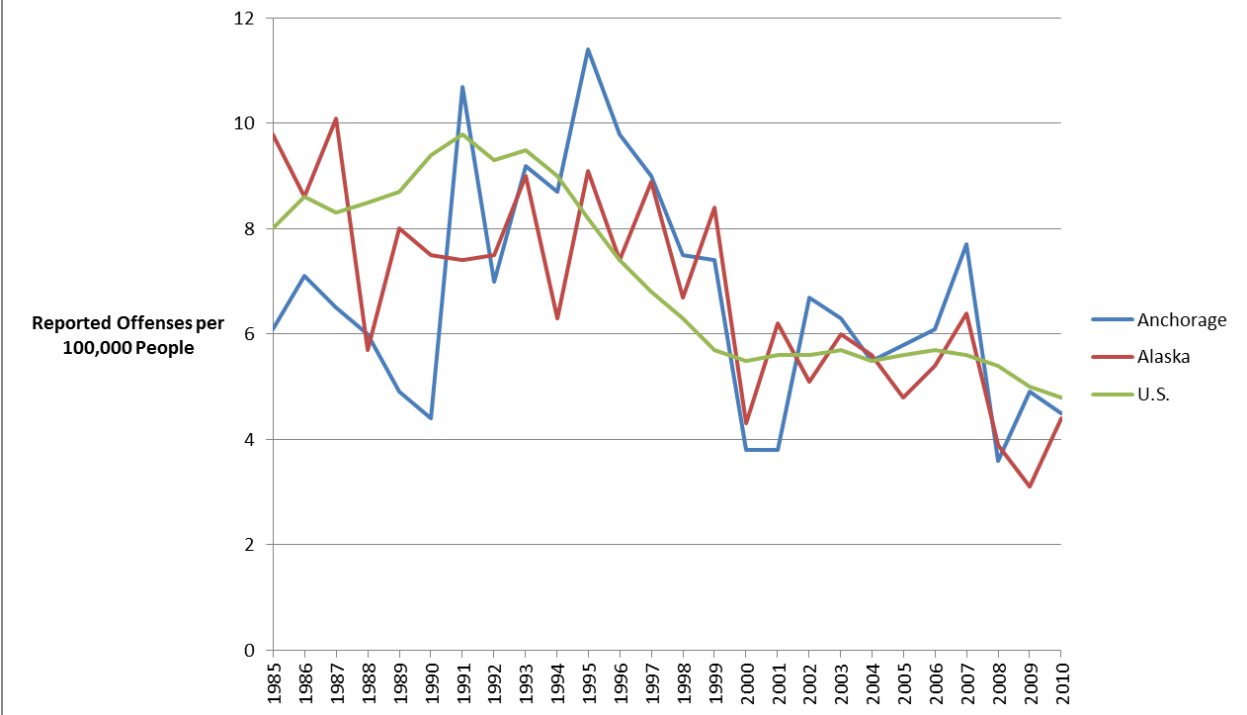
Source: Federal Bureau of Investigation's Uniform Crime Reports

Violent Crime Rate, Anchorage, Alaska & U.S., 1985-2010



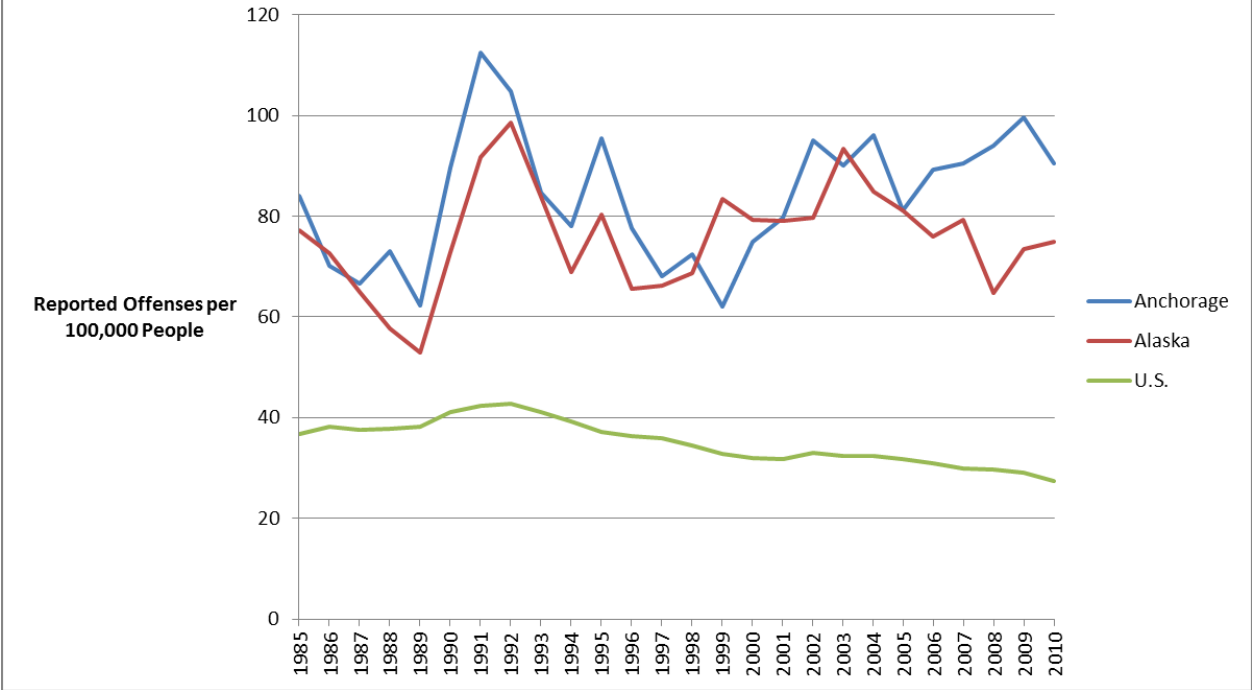
Source: Federal Bureau of Investigation’s Uniform Crime Reports

Murder and Nonnegligent Manslaughter Rate, Anchorage, Alaska & U.S., 1985-2010



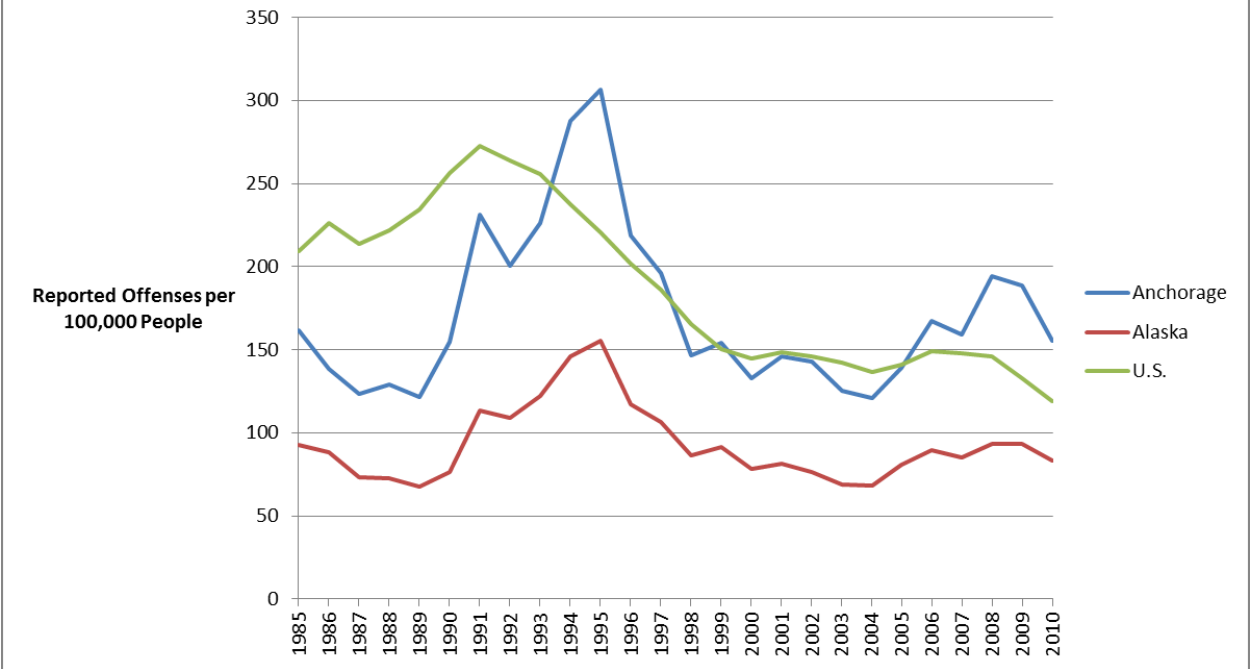
Source: Federal Bureau of Investigation’s Uniform Crime Reports

Forcible Rape Rate, Anchorage, Alaska & U.S., 1985-2010

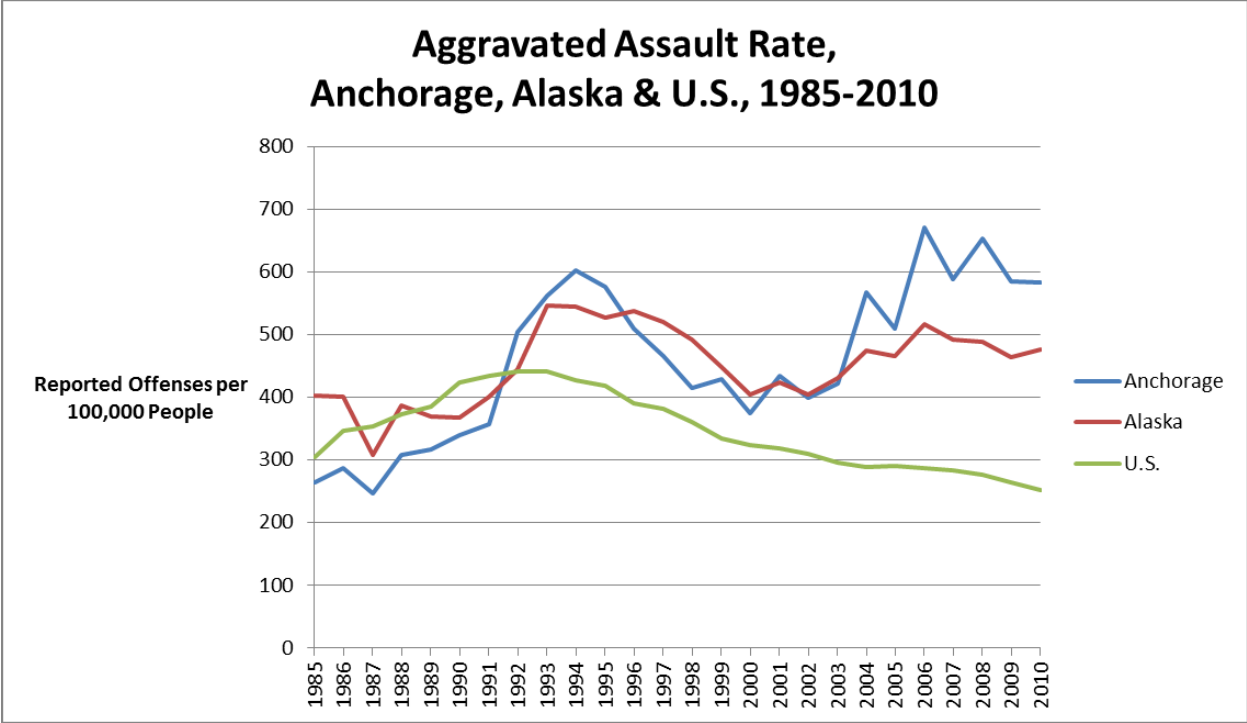


Source: Federal Bureau of Investigation's Uniform Crime Reports

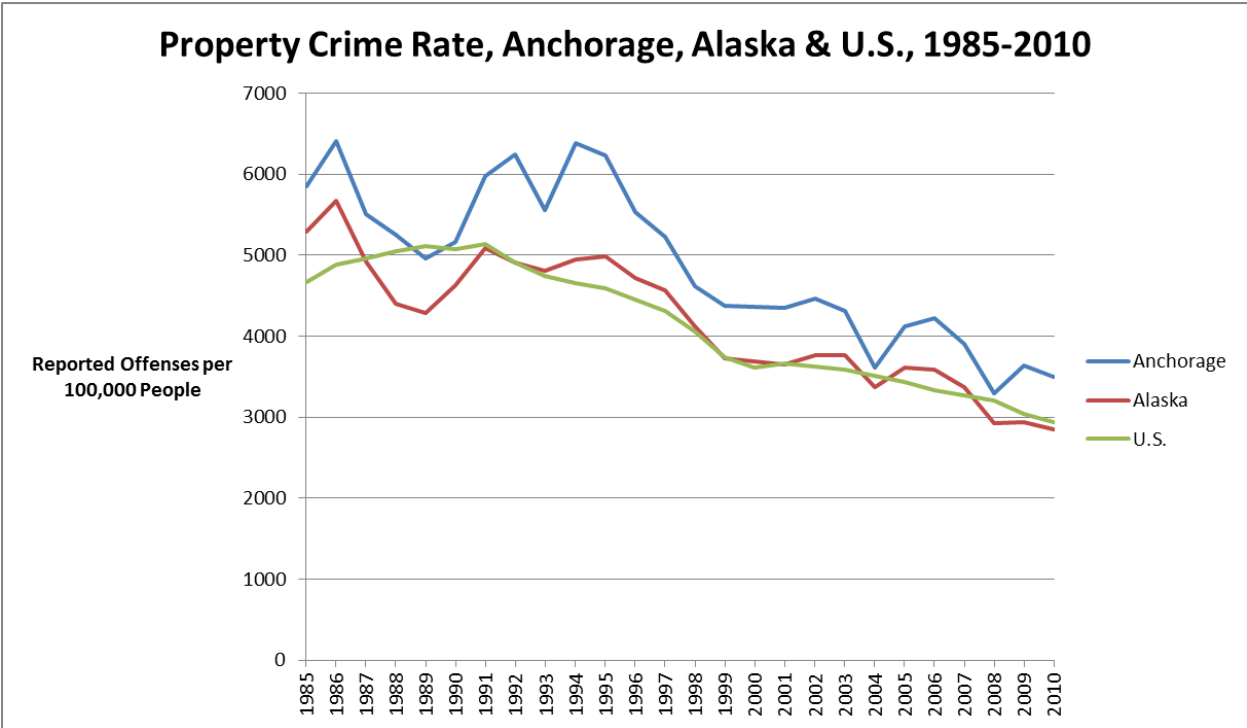
Robbery Rate, Anchorage, Alaska & U.S., 1985-2010



Source: Federal Bureau of Investigation's Uniform Crime Reports

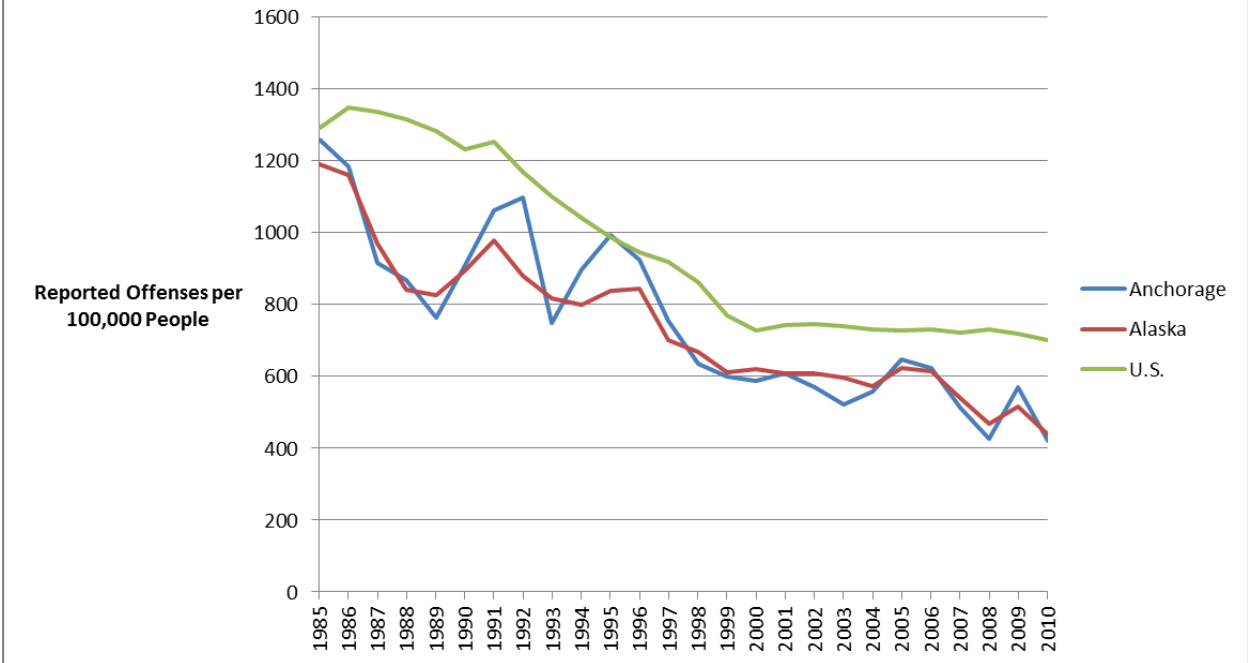


Source: Federal Bureau of Investigation’s Uniform Crime Reports



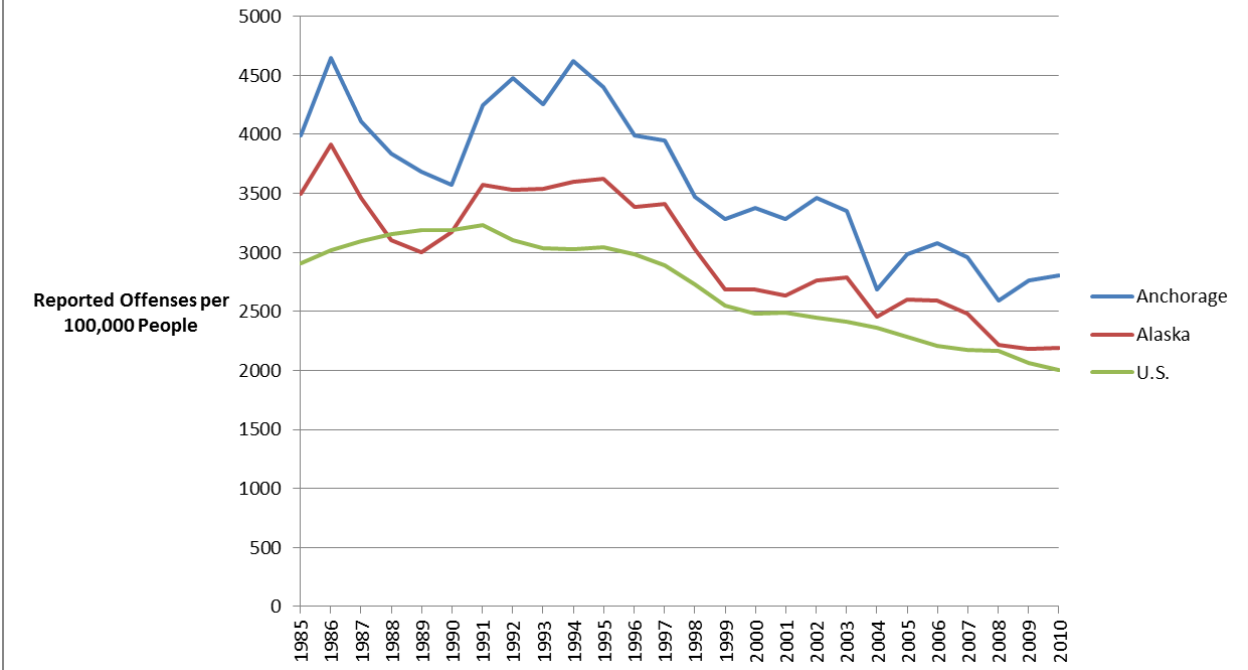
Source: Federal Bureau of Investigation’s Uniform Crime Reports

Burglary Rate, Anchorage, Alaska & U.S., 1985-2010



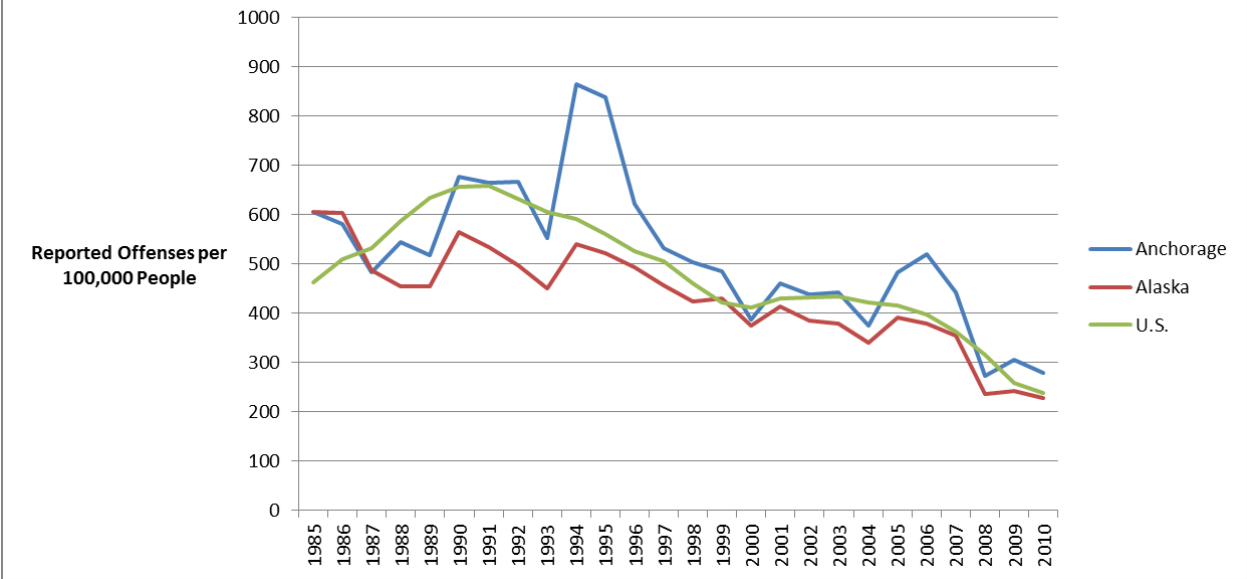
Source: Federal Bureau of Investigation’s Uniform Crime Reports

Larceny-Theft Rate, Anchorage, Alaska & U.S., 1985-2010



Source: Federal Bureau of Investigation’s Uniform Crime Reports

Motor Vehicle Theft Rate, Anchorage, Alaska & U.S., 1985-2010



Source: Federal Bureau of Investigation’s Uniform Crime Reports