

# AEDC December 2010 Employment Report

## Executive Summary

---

The unemployment rate in Anchorage was down 1.3 percentage points in December from its 2010 high of 7.8 percent in March. Overall unemployment has averaged 6.9 percent in Anchorage in 2010, which is higher than 2009's 6.6 percent. However, the labor force in Anchorage is bigger YTD, November 2010, compared to 2009 by about 2,100 workers. So even though unemployment is up, the workforce is also larger.<sup>1</sup> It is also worth it to point out that while overall for 2010 unemployment was 0.3 percentage points higher than in 2009, for fourth quarter 2010 unemployment was down on average 0.4 percentage points compared to 2009 (6.4% and 6.8% respectively).

Overall, in Anchorage, jobs are also up for the year. In December there were 1,300 more jobs this year than compared to 2009. When looking at the overall averages for the year, jobs are up a tiny bit (167 jobs) but that is not counting for seasonal adjustments or revisions. Jobs crossed back into growth in August of 2010 and have continued to grow into December 2010. The sectors seeing the most growth are Government Jobs (up 517, mostly federal and state jobs) and Education and Healthcare (775 jobs with 483 of those in the Healthcare sector).

The overall picture is that services producing jobs in Anchorage (Engineering, retail, tourism, healthcare, etc.) are up 2010 over 2009 by 442 jobs or 0.32 percent. Goods producing jobs which are construction work, mining, oil & gas (those jobs that are specifically tied to production, not those that support the production or maintenance of the production jobs) are down 283 jobs or 2.17.

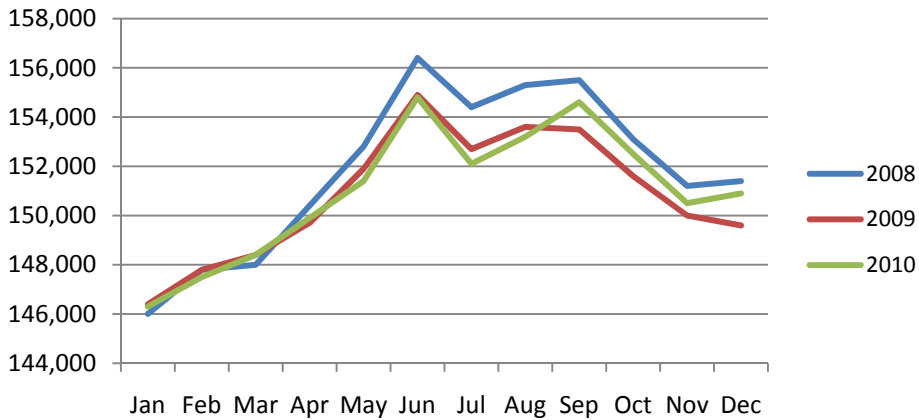
Please keep in mind that even though these are not the revised numbers and we expect them to change as better numbers come in from both state and local sources.

---

<sup>1</sup> Unemployment rate and labor force only counts jobs and people that live and work in the same city, but the Industry Employment Estimates count all jobs within a specified city or region regardless of where a person lives.

## Anchorage Employment

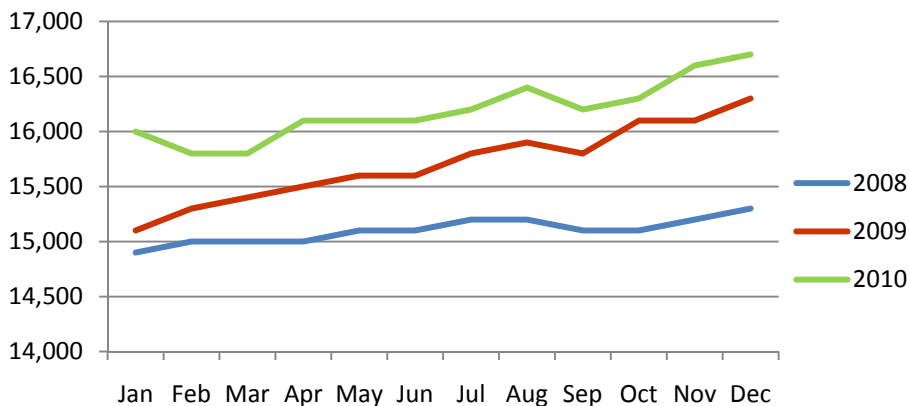
Municipality of Anchorage 2008-Present



Preliminary numbers for Anchorage's employment show an average increase of 167 jobs for 2010 compared to 2009, with a month-to-month (Dec. 10 vs. Dec. 09) comparison showing an increase of 1,300 jobs. While still below the highs of 2008, this is the fourth month 2010 employment levels have been up over 2009 levels. Overall on the Anchorage job front, 2010 ended up better than 2009 but not as good as 2008; landing somewhere in between.

## Health Care Employment

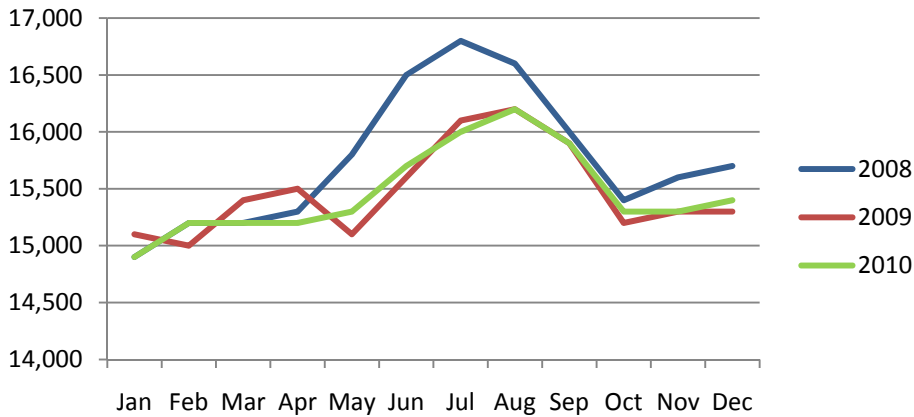
Municipality of Anchorage 2008-Present



According to preliminary numbers for health care and related employment there was an increase of 100 jobs from November to December 2010. On average for 2010 compared to 2009 health care is up 483 jobs. For the second month in a row, health care continues to hold steady at about a 400 job increase comparing month-to-month 2009 vs 2010. We expected growth from this sector throughout 2010 and health care didn't disappoint.

## Leisure & Hospitality Employment

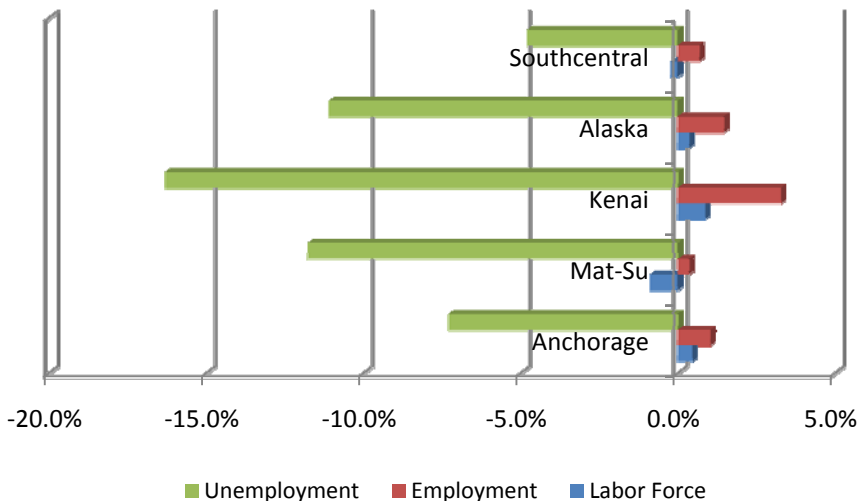
Municipality of Anchorage 2008-Present



Leisure and hospitality employment is a naturally cyclical industry, and 2010 has proved no different. On average year-over-year this sector is down 100 jobs. December showed a growth of 100 jobs from 2009 to 2010. Given the terrible prognosis for this sector at the start of 2010 (a loss of 500 jobs), the slight loss of about 100 jobs is good news.

## Year-over-year Percent Change

December 2009-December 2010



Year over year employment remains strong with the labor force growing over the year and unemployment decreasing in all geographic areas when comparing December 2009 vs. 2010.

Unemployment rates went up almost statewide for the last three months, except in Anchorage where unemployment has held steady at 6.4%. Even though unemployment has gone up consecutively (or in the case of Anchorage remained flat) over the last three months, it has remained below 2009 levels for all three months for all regions.



## Unemployment Analysis (Year-To-Date, 2010)

• Anchorage • Mat-Su Borough • Kenai Peninsula Borough •

	January revised	February revised	March revised	April revised	May revised	June revised	July revised	August revised	September revised	October revised	November revised	December preliminary	10 YTD Avg	09 YTD Avg	10 vs 09
<b>Municipality of Anchorage</b>															
Labor Force	158,078	157,990	157,926	157,361	155,500	156,062	155,561	154,498	154,650	157,294	157,555	158,637	156,759	154,562	2,197
Employment	146,338	145,777	145,654	146,204	144,798	145,440	145,896	144,496	144,307	147,212	147,508	148,506	146,011	144,303	1,708
Unemployment	11,740	12,213	12,272	11,157	10,702	10,622	9,665	10,002	10,343	10,082	10,047	10,131	10,748	10,259	489
Rate	7.4	7.7	7.8	7.1	6.9	6.8	6.2	6.5	6.7	6.4	6.4	6.4	6.9%	6.6%	0.2%
<b>Mat-Su Borough</b>															
Labor Force	43,919	43,851	43,811	43,166	42,248	42,384	42,131	41,781	41,793	42,788	43,274	43,757	42,909	42,425	484
Employment	39,039	38,890	38,857	39,004	38,629	38,800	38,922	38,548	38,498	39,273	39,351	39,618	38,952	38,497	456
Unemployment	4,880	4,961	4,954	4,162	3,619	3,584	3,209	3,233	3,295	3,515	3,923	4,139	3,956	3,928	28
Rate	11.1	11.3	11.3	9.6	8.6	8.5	7.6	7.7	7.9	8.2	9.1	9.5	9.2%	9.3%	0.0%
<b>Kenai Peninsula Borough</b>															
Labor Force	26,574	26,300	26,545	26,781	27,696	28,501	28,736	28,150	27,307	26,189	26,170	26,155	27,092	26,569	523
Employment	23,151	22,801	23,166	23,840	25,127	26,010	26,500	25,864	24,897	23,678	23,499	23,349	24,324	23,735	589
Unemployment	3,423	3,499	3,379	2,941	2,569	2,491	2,236	2,286	2,410	2,511	2,671	2,806	2,769	2,834	(66)
Rate	12.9	13.3	12.7	11.0	9.3	8.7	7.8	8.1	8.8	9.6	10.2	10.7	10.2%	10.7%	-0.4%
<b>Southcentral Region Averages</b>															
Labor Force	228,571	228,141	228,282	227,308	225,444	226,947	226,428	224,429	223,750	226,271	226,999	228,549	226,760	223,556	3,204
Employment	208,528	207,468	207,677	209,048	208,554	210,250	211,318	208,908	207,702	210,163	210,358	211,473	209,287	206,535	2,752
Unemployment	20,043	20,673	20,605	18,260	16,890	16,697	15,110	15,521	16,048	16,108	16,641	17,076	17,473	17,021	451
Rate	8.8%	9.1%	9.0%	8.0%	7.5%	7.4%	6.7%	6.9%	7.2%	7.1%	7.3%	7.5%	7.7%	7.6%	0.1%

**\*Note:** These numbers reflect employment, unemployment, etc. for only those people that are residence of the specified City/Region, thus are not inclusive of people who commute to another city for their jobs. (Ex: Someone lives in Wasilla but works in Anchorage. They would be counted in the Mat-Su Borough's labor force and employment numbers, not the Municipality of Anchorage numbers)





## Industry Employment Estimates 2010 Municipality of Anchorage

Industry	Jan	Feb	Mar	Apr	May	Jun	Jul	Aug	Sep	Oct	Nov	Dec	2010 YTD Avg.	2009 YTD Avg.	2010 vs 2009 Monthly Avg	% Change
	revised	revised	revised	revised	revised	revised	revised	revised	revised	revised	revised	preliminary				
<b>Total Nonfarm</b>	146,300	147,500	148,400	149,900	151,400	154,800	152,100	153,200	154,600	152,500	150,500	150,900	151,008	150,842	167	0.11%
Goods Producing	10,900	11,100	11,800	12,300	13,100	14,300	14,600	14,700	14,200	13,500	11,600	11,500	12,800	13,083	-283	-2.17%
Services Providing	135,400	136,300	136,600	137,600	138,300	140,500	137,500	138,500	140,400	139,000	138,900	139,400	138,200	137,758	442	0.32%
Mining and Logging <sup>2</sup>	2,700	2,800	2,700	2,700	2,800	2,800	2,800	2,800	2,900	2,800	2,700	2,800	2,775	2,825	-50	-1.77%
Mining	2,700	2,800	2,700	2,700	2,800	2,700	2,700	2,700	2,900	2,800	2,700	2,800	2,742	2,825	-83	-2.95%
Oil & Gas	2,700	2,700	2,600	2,700	2,700	2,600	2,600	2,600	2,700	2,600	2,600	2,600	2,642	2,692	-50	-1.86%
Construction	6,500	6,800	7,400	7,800	8,500	9,700	9,900	10,000	9,400	8,800	7,000	6,900	8,225	8,475	-250	-2.95%
Manufacturing	1,700	1,600	1,700	1,700	1,800	1,900	1,900	1,900	2,000	1,900	1,800	1,800	1,808	1,783	25	1.40%
Trade/Transportation/Utilities	31,400	31,200	31,300	31,600	32,200	33,100	33,100	33,000	33,300	32,500	32,600	32,800	32,342	32,967	-625	-1.90%
Wholesale Trade	4,300	4,300	4,400	4,400	4,400	4,600	4,500	4,500	4,600	4,500	4,300	4,300	4,425	4,667	-242	-5.18%
Retail Trade	16,700	16,400	16,500	16,900	17,100	17,300	17,400	17,400	17,500	17,400	17,700	17,800	17,175	17,225	-50	-0.29%
Trans/Warehouse/Utilities	10,400	10,400	10,400	10,400	10,700	11,200	11,200	11,100	11,200	10,600	10,600	10,700	10,742	11,075	-333	-3.01%
Air Transportation	3,200	3,200	3,200	3,200	3,400	3,300	3,100	3,000	3,000	3,000	3,000	3,100	3,142	3,267	-125	-3.83%
Information	3,900	3,900	3,900	3,900	3,900	4,000	4,000	4,000	4,000	4,000	4,000	4,000	3,958	4,092	-133	-3.26%
Financial Activities	8,600	8,600	8,700	8,700	8,700	8,900	9,100	9,100	9,000	8,900	8,700	8,700	8,808	8,775	33	0.38%
Professional & Business Svcs	17,800	18,200	18,200	18,000	18,900	19,200	19,300	19,100	18,700	18,500	18,300	18,300	18,542	18,608	-67	-0.36%
Educational & Health Services	21,500	21,400	21,300	21,500	21,400	21,400	21,700	22,000	21,900	22,000	22,400	22,500	21,750	20,975	775	3.69%
Health Care	16,000	15,800	15,800	16,100	16,100	16,100	16,200	16,400	16,200	16,300	16,600	16,700	16,192	15,708	483	3.08%
Leisure & Hospitality	14,900	15,200	15,200	15,200	15,300	15,700	16,000	16,200	15,900	15,300	15,300	15,400	15,467	15,567	-100	-0.64%
Accommodation	3,000	3,000	3,100	2,900	2,900	3,200	3,300	3,400	3,400	3,100	3,100	3,200	3,133	3,192	-58	-1.83%
Food Svcs & Drinking Places	9,800	9,900	10,300	10,200	10,400	10,600	10,700	10,800	10,700	10,500	10,400	10,400	10,392	10,308	83	0.81%
Other Services	5,700	5,700	5,800	5,800	5,800	6,000	5,900	5,800	5,800	5,800	5,800	5,700	5,800	5,750	50	0.87%
Government	31,600	32,100	32,200	32,800	32,000	32,300	28,400	29,200	32,000	32,100	31,900	31,900	31,542	31,025	517	1.67%
Federal Government	9,500	9,600	9,700	9,800	10,300	10,300	10,200	9,900	9,800	9,700	9,600	9,700	9,842	9,550	292	3.05%
State Government	10,600	10,800	10,800	10,900	10,100	10,500	10,200	10,200	11,100	11,100	11,100	10,900	10,692	10,450	242	2.31%
State Education	2,500	2,700	2,700	2,700	1,900	2,000	1,800	2,000	2,800	2,800	2,800	2,700	2,450	2,417	33	1.38%
Local Government	11,500	11,700	11,600	12,100	11,600	11,500	8,100	9,000	11,100	11,300	11,200	11,200	10,992	11,025	-33	-0.30%
Local Education	8,500	8,700	8,700	8,600	8,600	8,400	5,000	6,100	8,400	8,400	8,400	8,400	8,017	7,808	208	2.67%
Tribal Government <sup>1</sup>	0	0	0	0	0	0	0	0	0	0	0	0	-	-		

- Nonfarm Wage & Salary excludes self-employed workers, fishers, domestics, and unpaid family workers.

- Government includes employees of public school systems and the University of Alaska.

- Beginning January 2001, wage and salary employment estimates were published under a new classification system. The Standard Industrial Classification system (SIC) has been replaced by the North American Industry Classification System (NAICS). Data prior to 2001 are comparable only at the Total Nonfarm and Government levels.

<sup>1/</sup> As of January 2001, certain federally-recognized tribal entities were moved to Local Government, which created a series break for Total Government and Local Government. [Please see the April 2002 Alaska Economic Trends publication for a detailed explanation.](#)

<sup>2/</sup> This category was called "Natural Resources and Mining" in previous years. The change is in name only; the industries it includes remain the same.

- Source: Alaska Department of Labor and Workforce Development, Research and Analysis Section

Quick Comparisons		
10 vs 09		
December	1,300	0.86%
10 vs 09		
1st Qtr	-133	-0.09%
10 vs 09 2nd		
Qtr.	-133	-0.09%
10 vs 09 3rd		
Qtr.	33	0.02%
10 vs 09 4th		
Qtr.	900	0.60%

\* **Note:** The above numbers are representative of all people employed in the Municipality of Anchorage, this is inclusive of workers who claim residence outside of the Municipality of Anchorage. (Ex: someone who lives in the Mat-Su, but works in Anchorage would be included in these number)



## Industry Employment Estimates 2010 State of Alaska

Industry	Jan	Feb	Mar	Apr	May	Jun	Jul	Aug	Sep	Oct	Nov	Dec	2010 YTD Avg.	2009 YTD Avg.	2010 vs 2009 Monthly Avg	% Change
	revised	revised	revised	revised	revised	revised	revised	revised	revised	revised	revised	preliminary				
<b>Total Nonfarm</b>	<b>306,800</b>	<b>311,200</b>	<b>313,600</b>	<b>314,900</b>	<b>325,200</b>	<b>344,100</b>	<b>350,800</b>	<b>346,500</b>	<b>333,100</b>	<b>318,800</b>	<b>311,700</b>	<b>308,200</b>	<b>323,742</b>	<b>321,150</b>	<b>2,592</b>	<b>0.81%</b>
Goods Producing	38,700	41,400	42,000	41,000	44,800	54,500	63,200	60,700	49,300	43,000	38,500	33,600	45,892	44,342	1,550	3.50%
Services Providing	268,100	269,800	271,600	273,900	280,400	289,600	287,600	285,800	283,800	275,800	273,200	274,600	277,850	276,808	1,042	0.38%
Mining and Logging <sup>2</sup>	14,300	15,000	15,300	15,600	16,600	17,500	17,800	17,900	14,600	14,500	14,200	14,100	15,617	15,267	350	2.29%
Mining	14,200	14,800	14,900	14,300	16,300	17,100	17,400	17,500	14,200	14,000	13,900	14,000	15,217	15,050	167	1.11%
Oil & Gas	12,200	12,700	12,600	12,200	12,200	12,000	12,000	12,000	11,600	12,100	11,900	12,000	12,125	12,900	-775	-6.01%
Construction	12,300	13,000	13,300	14,700	17,000	19,000	20,000	20,100	18,400	16,900	13,900	12,600	15,933	16,108	-175	-1.09%
Manufacturing	12,100	13,400	13,400	10,700	11,200	18,000	25,400	22,700	16,300	11,600	10,400	6,900	14,342	12,967	1,375	10.60%
Seafood Processing	8,100	9,400	8,400	7,700	6,900	11,900	19,300	18,300	11,800	6,200	4,700	2,900	9,633	9,167	467	5.09%
Trade/Transportation/Utilities	60,600	60,600	61,200	61,700	64,500	67,300	68,100	67,500	64,000	61,100	60,600	61,000	63,183	63,317	-133	-0.21%
Wholesale Trade	6,000	6,000	6,100	6,200	6,400	6,700	6,900	6,900	6,300	6,000	5,900	5,800	6,267	6,292	-25	-0.40%
Retail Trade	34,900	34,800	35,200	35,600	37,000	37,900	38,400	37,800	35,600	34,700	34,900	35,300	36,008	35,642	367	1.03%
Food & Beverage Stores	6,300	6,500	6,400	6,400	6,500	6,700	7,000	6,700	6,100	5,900	5,900	6,000	6,367	6,333	33	0.53%
General Merchandise Stores	9,900	10,000	10,000	10,200	10,300	10,000	10,500	10,500	10,100	9,900	10,000	10,000	10,117	9,925	192	1.93%
Trans/Warehouse/Utilities	19,700	19,800	19,900	19,900	21,100	22,700	22,800	22,800	22,100	20,400	19,800	19,900	20,908	21,383	-475	-2.22%
Air Transportation	6,100	5,800	5,700	5,700	5,700	5,600	5,700	5,600	5,600	5,500	5,400	5,400	5,650	6,100	-450	-7.38%
Truck Transportation	2,900	2,900	3,000	2,900	2,900	3,000	3,200	3,300	3,100	3,000	2,900	2,900	3,000	3,108	-108	-3.49%
Information	6,400	6,400	6,400	6,300	6,400	6,400	6,400	6,400	6,300	6,300	6,300	6,200	6,350	6,592	-242	-3.67%
Telecommunications	4,200	4,400	4,200	4,100	4,200	4,200	4,300	4,200	4,200	4,300	4,200	4,200	4,225	4,317	-92	-2.12%
Financial Activities	14,100	13,900	13,800	14,000	13,900	14,000	14,100	14,000	14,900	15,200	15,000	14,600	14,292	14,667	-375	-2.56%
Professional & Business Svcs	23,500	23,600	23,700	23,900	24,800	25,500	26,000	25,600	26,200	25,200	24,600	25,000	24,800	26,058	-1,258	-4.83%
Educational & Health Services	40,100	40,300	40,400	40,100	40,100	39,900	40,600	40,000	41,600	42,000	42,700	41,700	40,792	39,083	1,708	4.37%
Health Care	29,000	29,200	29,100	29,000	28,800	28,500	28,900	28,700	30,400	30,400	30,700	29,900	29,383	28,167	1,217	4.32%
Leisure & Hospitality	27,500	27,500	27,800	29,300	33,300	38,000	40,100	39,800	32,500	27,900	26,800	28,800	31,608	31,425	183	0.58%
Accommodation	6,100	6,100	6,100	6,600	7,300	10,400	11,600	11,700	8,900	6,200	5,900	6,400	7,775	7,717	58	0.76%
Food Svcs & Drinking Places	17,600	17,500	17,700	18,400	20,500	22,000	22,800	22,500	19,000	18,000	17,400	18,500	19,325	18,983	342	1.80%
Other Services	11,500	11,200	11,100	11,100	11,100	11,100	10,900	11,100	11,700	11,700	11,400	11,200	11,258	11,467	-208	-1.82%
Government	84,400	86,300	87,200	87,500	86,300	87,400	81,400	81,400	86,600	86,400	85,800	86,100	85,567	84,200	1,367	1.62%
Federal Government	16,300	16,500	17,000	17,400	18,800	19,200	19,000	18,300	17,500	16,500	16,200	16,500	17,433	17,042	392	2.30%
State Government	25,000	26,100	26,300	26,600	25,000	25,500	24,700	24,700	26,600	26,400	26,300	25,900	25,758	25,358	400	1.58%
State Education	7,000	8,000	8,000	8,100	6,600	6,100	5,700	5,900	8,100	8,200	8,200	8,000	7,325	7,200	125	1.74%
Local Government	43,100	43,700	43,900	43,500	42,500	42,700	37,700	38,400	42,500	43,500	43,300	43,700	42,375	41,800	575	1.38%
Local Education	24,600	25,100	25,100	25,500	24,000	22,900	18,000	19,500	24,300	25,000	25,000	25,200	23,683	23,083	600	2.60%
Tribal Government <sup>1</sup>	3,500	3,700	3,700	3,600	3,700	4,100	4,100	3,900	3,900	3,900	3,800	3,800	3,808	3,667	142	3.86%

- Nonfarm Wage & Salary excludes self-employed workers, fishers, domestics, and unpaid family workers.

- Government includes employees of public school systems and the University of Alaska.

- Beginning January 2001, wage and salary employment estimates were published under a new classification system. The Standard Industrial Classification system (SIC) has been replaced by the North American Industry Classification System (NAICS). Data prior to 2001 are comparable only at the Total Nonfarm and Government levels.

<sup>1/</sup> As of January 2001, certain federally-recognized tribal entities were moved to Local Government, which created a series break for Total Government and Local Government. [Please see the April 2002 Alaska Economic Trends publication for a detailed explanation.](#)

<sup>2/</sup> This category was called "Natural Resources and Mining" in previous years. The change is in name only; the industries it includes remain the same.

- Source: Alaska Department of Labor and Workforce Development, Research and Analysis Section

### Quick Comparisons

<b>10 vs 09</b>		
<b>December</b>	<b>1,000</b>	<b>0.31%</b>
<b>10 vs 09 1st</b>		
<b>Qtr</b>	<b>4,067</b>	<b>1.33%</b>
<b>10 vs 09 2nd</b>		
<b>Qtr.</b>	<b>3,167</b>	<b>0.97%</b>
<b>10 vs 09</b>		
<b>3rd Qtr.</b>	<b>3,233</b>	<b>0.95%</b>
<b>10 vs 09</b>		
<b>4th Qtr YTD</b>	<b>-100</b>	<b>-0.03%</b>

Click Bishop  
Commissioner

P.O. Box 111149  
Juneau, AK 99811-1149

www.labor.alaska.gov

STATE OF ALASKA

DEPARTMENT OF LABOR  
AND WORKFORCE DEVELOPMENT

Beth Leschper  
Communications Director

907.465.2700  
cell: 907.723.1321

beth.leschper@alaska.gov

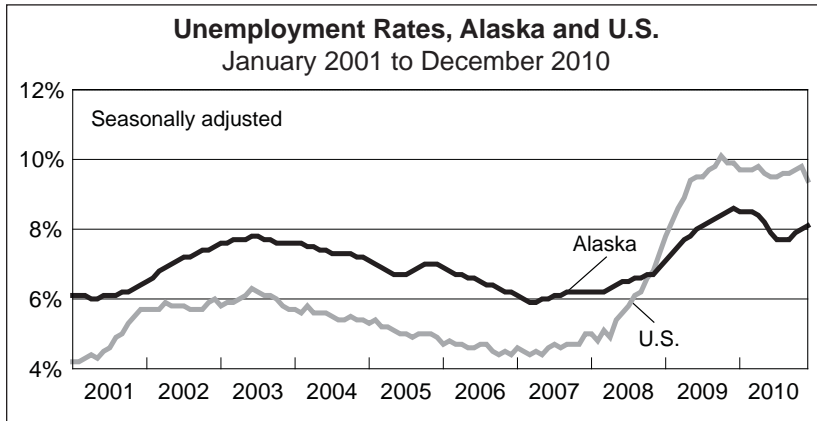
## Press Release

January 21, 2011

COMMISSIONER'S OFFICE

No. 11-04

### Unemployment rate at 8.1 percent in December



Alaska's seasonally adjusted unemployment rate for December inched up slightly to 8.1 percent. November's rate was 8.0 percent.

Alaska's jobless rate remains lower than the rest of the United States. The comparable national unemployment rate for December was 9.4 percent, down from 9.8 percent in November. Exactly a year ago, the national unemployment rate was 9.9 percent, compared to 8.6 percent for Alaska.

The not seasonally adjusted unemployment rates increased in nearly all of the state's regions in December. In most cases, the jobless numbers are close to year-ago levels.

#### Alaska Nonfarm Payroll Employment<sup>1</sup>

	Preliminary 12/10	Revised 11/10	Revised 12/09	Year-over-year change		
				12/09	90% confidence interval <sup>2</sup>	
Total Nonfarm Employment <sup>3</sup>	308,200	311,700	307,200	1,000	-6,383	8,383
Mining and Logging	14,100	14,200	14,600	-500	-1,293	293
Oil and Gas	12,000	11,900	12,200	-200	-	-
Construction	12,600	13,900	13,600	-1,000	-3,583	1,583
Manufacturing	6,900	10,400	6,500	400	-594	1,394
Seafood Processing	2,900	4,700	3,000	-100	-	-
Trade, Transportation, and Utilities	61,000	60,600	61,600	-600	-2,972	1,772
Retail Trade	35,300	34,900	35,600	-300	-2,328	1,728
Information	6,200	6,300	6,400	-200	-781	381
Financial Activities	14,600	15,000	14,400	200	-1,743	2,143
Professional and Business Services	25,000	24,600	24,500	500	-1,293	2,293
Educational <sup>4</sup> and Health Services	41,700	42,700	39,700	2,000	732	3,268
Health Care	29,900	30,700	28,800	1,100	-	-
Leisure and Hospitality	28,800	26,800	28,700	100	-1,937	2,137
Accommodations	6,400	5,900	6,200	200	-	-
Food Svcs. and Drinking Places	18,500	17,400	18,600	-100	-	-
Other Services	11,200	11,400	11,500	-300	-3,476	2,876
Government <sup>5</sup>	86,100	85,800	85,700	400	-	-

Notes:

A dash indicates that confidence intervals are not available at this level of detail.

<sup>1</sup> Not seasonally adjusted

<sup>2</sup> Based on the margin of error of the estimate, a 90 percent confidence interval statistically determines a range of values within which the "true" value falls with a 90 percent level of confidence. For more information, go to <http://labor.alaska.gov/research/c-i.pdf>.

<sup>3</sup> Excludes the self-employed, fishermen and other agricultural workers, and private household workers

<sup>4</sup> Private education only

<sup>5</sup> Includes public schools, the University of Alaska, and federally recognized tribal entities

#### Unemployment Rates, Seasonally Adjusted

	12/10	11/10	12/09
Alaska	8.1%	8.0%	8.6%
U.S.	9.4%	9.8%	9.9%

In December, jobless rates hit the double digits in 20 out of 28 areas in the state — a characteristic of winter in Alaska — with unemployment highest in Skagway and Hoonah-Angoon. The economies with the highest unemployment tend to be smaller communities with strong ties to fishing and tourism, and/or those with a chronic lack of year-round employment opportunities.

Larger communities with less-pronounced seasonal employment tend to have the lowest rates. However, the relatively small North Slope Borough was an exception in December. Its unemployment rate is low because of its oil industry workforce, which tends not to be seasonal.

The U.S. Department of Labor's Bureau of Labor Statistics has implemented a change to the method used to produce statewide wage and salary employment estimates. That change has resulted in increased monthly volatility in the wage and salary estimates for many states, including Alaska. Therefore, one should be very cautious in interpreting any over-the-year or month-to-month change for these monthly estimates. The Quarterly Census of Employment and Wages series may be a better source of information for trends analysis (<http://labor.alaska.gov/qcew.htm>).

Contact: Neal Fried, Economist (907) 269-4861  
Research and Analysis Web site: <http://laborstats.alaska.gov>

# Labor Force by Borough and Census Area, Not Seasonally Adjusted<sup>1</sup>

	Civilian Labor Force			Unemployed					
	12/10 <sup>P</sup>	11/10	12/09	Number			Rate		
				12/10 <sup>P</sup>	11/10	12/09	12/10 <sup>P</sup>	11/10	12/09
<b>Alaska Statewide</b>	<b>360,334</b>	<b>359,933</b>	<b>358,668</b>	<b>29,297</b>	<b>28,221</b>	<b>31,742</b>	<b>8.1</b>	<b>7.8</b>	<b>8.8</b>
<b>Anchorage/Mat-Su Region</b>	<b>202,394</b>	<b>200,829</b>	<b>201,564</b>	<b>14,270</b>	<b>13,970</b>	<b>15,373</b>	<b>7.1</b>	<b>7.0</b>	<b>7.6</b>
Municipality of Anchorage	158,637	157,555	157,907	10,131	10,047	10,927	6.4	6.4	6.9
Matanuska-Susitna Borough	43,757	43,274	43,657	4,139	3,923	4,446	9.5	9.1	10.2
<b>Gulf Coast Region</b>	<b>37,137</b>	<b>37,694</b>	<b>37,137</b>	<b>4,019</b>	<b>3,746</b>	<b>4,487</b>	<b>10.8</b>	<b>9.9</b>	<b>12.1</b>
Kenai Peninsula Borough	26,155	26,170	26,461	2,806	2,671	3,158	10.7	10.2	11.9
Kodiak Island Borough	6,170	6,616	6,131	697	580	806	11.3	8.8	13.1
Valdez-Cordova Census Area	4,812	4,908	4,545	516	495	523	10.7	10.1	11.5
<b>Interior Region</b>	<b>54,428</b>	<b>54,138</b>	<b>53,736</b>	<b>4,375</b>	<b>4,222</b>	<b>4,809</b>	<b>8.0</b>	<b>7.8</b>	<b>8.9</b>
Denali Borough	844	802	747	154	156	179	18.2	19.5	24.0
Fairbanks North Star Borough	46,877	46,669	46,506	3,331	3,218	3,718	7.1	6.9	8.0
Southeast Fairbanks Census Area	3,710	3,660	3,554	402	383	418	10.8	10.5	11.8
Yukon-Koyukuk Census Area	2,997	3,007	2,929	488	465	494	16.3	15.5	16.9
<b>Northern Region</b>	<b>12,398</b>	<b>12,380</b>	<b>12,385</b>	<b>1,125</b>	<b>1,141</b>	<b>1,182</b>	<b>9.1</b>	<b>9.2</b>	<b>9.5</b>
Nome Census Area	4,181	4,191	4,001	498	494	526	11.9	11.8	13.1
North Slope Borough	5,061	5,031	5,557	254	272	269	5.0	5.4	4.8
Northwest Arctic Borough	3,156	3,158	2,827	373	375	387	11.8	11.9	13.7
<b>Southeast Region</b>	<b>38,320</b>	<b>38,404</b>	<b>38,357</b>	<b>3,298</b>	<b>3,052</b>	<b>3,596</b>	<b>8.6</b>	<b>7.9</b>	<b>9.4</b>
Haines Borough	1,181	1,208	1,066	143	120	142	12.1	9.9	13.3
Hoonah-Angoon Census Area <sup>2</sup>	868	888	1,000	186	172	264	21.4	19.4	26.4
City and Borough of Juneau	18,424	18,285	18,231	1,074	1,049	1,178	5.8	5.7	6.5
Ketchikan Gateway Borough <sup>2</sup>	7,605	7,661	7,817	673	623	752	8.8	8.1	9.6
Prince of Wales-Outer Ketchikan Census Area <sup>2</sup>	2,438	2,419	2,385	395	344	405	16.2	14.2	17.0
City and Borough of Sitka	4,368	4,458	4,463	325	288	352	7.4	6.5	7.9
Skagway Municipality <sup>2</sup>	553	566	535	154	147	104	27.8	26.0	19.4
Wrangell-Petersburg Census Area <sup>2</sup>	2,613	2,651	2,561	310	274	354	11.9	10.3	13.8
Yakutat Borough	270	268	299	38	35	45	14.1	13.1	15.1
<b>Southwest Region</b>	<b>15,656</b>	<b>16,486</b>	<b>15,488</b>	<b>2,210</b>	<b>2,089</b>	<b>2,294</b>	<b>14.1</b>	<b>12.7</b>	<b>14.8</b>
Aleutians East Borough	599	816	663	109	102	121	18.2	12.5	18.3
Aleutians West Census Area	1,888	2,443	2,039	227	187	285	12.0	7.7	14.0
Bethel Census Area	7,371	7,224	6,978	1,007	982	1,006	13.7	13.6	14.4
Bristol Bay Borough	496	527	439	47	40	49	9.5	7.6	11.2
Dillingham Census Area	1,730	1,838	1,731	203	193	206	11.7	10.5	11.9
Lake and Peninsula Borough	835	899	967	93	75	93	11.1	8.3	9.6
Wade Hampton Census Area	2,737	2,739	2,671	524	510	534	19.1	18.6	20.0

P = Preliminary. As more information becomes available, data are revised every month for the previous month and again at the end of every calendar year.

Note: The official definition of unemployment excludes anyone who has not made an active attempt to find work in the four-week period up to and including the week that includes the 12th of the reference month. Many in rural Alaska do not meet the definition because they have not conducted an active job search due to the scarcity of employment opportunities.

<sup>1</sup> Unemployment rates that are not seasonally adjusted should not be compared with those that are.

<sup>2</sup> Because of the creation of new boroughs, this borough or census area has been changed or no longer exists. Data for the Skagway Municipality and Hoonah-Angoon Census Area (previously the Skagway-Hoonah-Angoon Census Area) became available in 2010. Data for the Wrangell Borough, and Petersburg and Prince of Wales-Hyder census areas will be available in 2011. Until then, data will continue to be published for the old areas.

Source: Alaska Department of Labor and Workforce Development, Research and Analysis Section; and U.S. Bureau of Labor Statistics