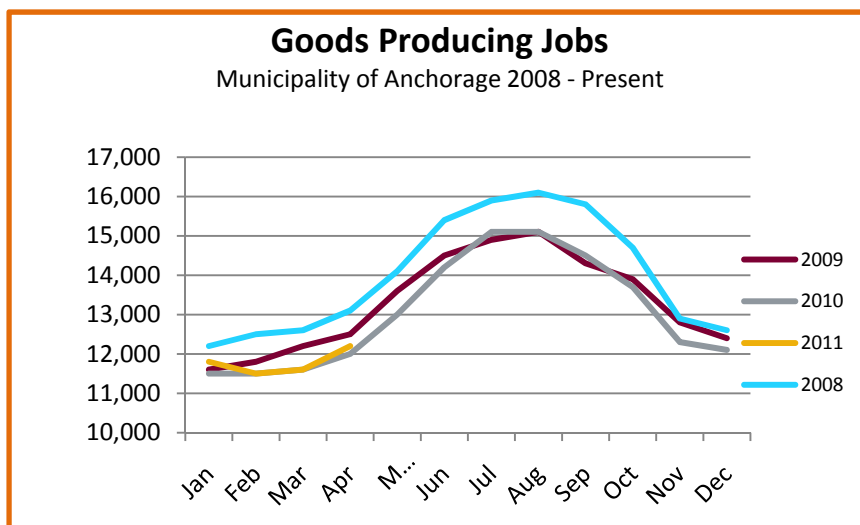
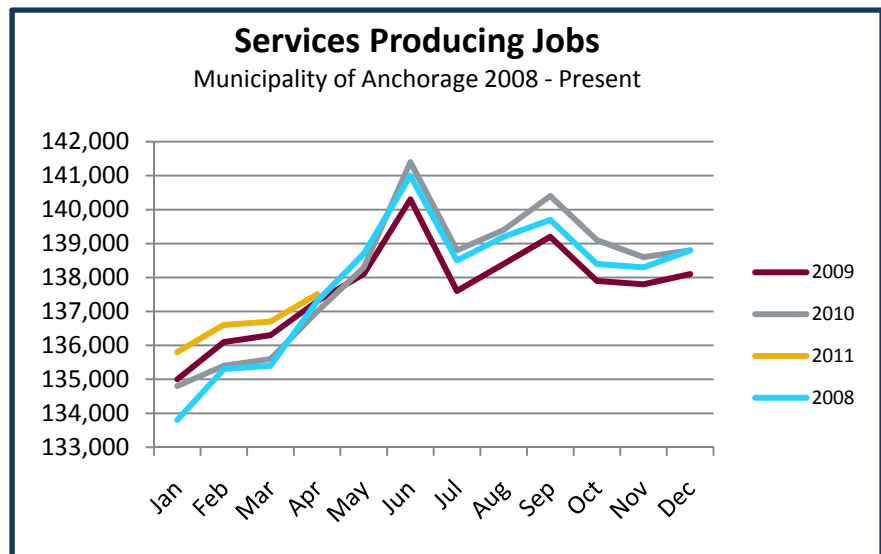


AEDC April 2011 Employment Report

Executive Summary

The unemployment rate in Anchorage was down 1.4 percentage points in April 2011 from its recent high of 7.8 percent in March 2010. Overall unemployment is averaging 6.5 percent in Anchorage in 2011, which is the same as 2009 and a whole percentage point below 2010. The labor force in Anchorage continues to grow and is averaging about 853 more workers in 2011, compared to 2010. This is particularly impressive when realizing that Anchorage unemployment continues to drop while the labor force continues to grow.¹

Overall, in Anchorage, jobs are also up for the year by an average of 1,100 when compared to 2010. The sectors seeing the most growth are professional services (up 400), and education and healthcare (up 900 jobs with 700 of those in the healthcare sector).

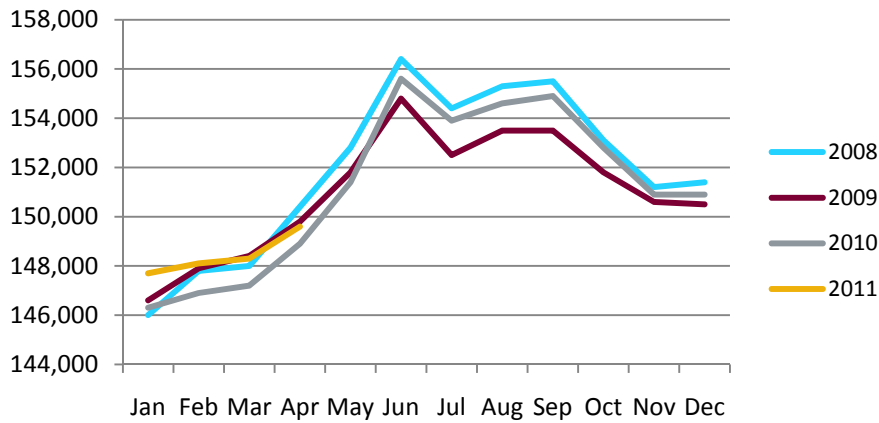


The overall picture is that services producing jobs in Anchorage (engineering, retail, tourism, healthcare, etc.) are up 2011 over 2010 by 950 jobs or 0.70 percent. Goods producing jobs which are construction work, mining and oil & gas (those jobs that are specifically tied to production, not those that support the production or maintenance of the production jobs) are up 125 jobs or 1.07 percent.

¹ Unemployment rate and labor force only count jobs and people that live and work in the same city, but the Industry Employment Estimates count all jobs within a specified city or region regardless of where a person lives.

Anchorage Employment

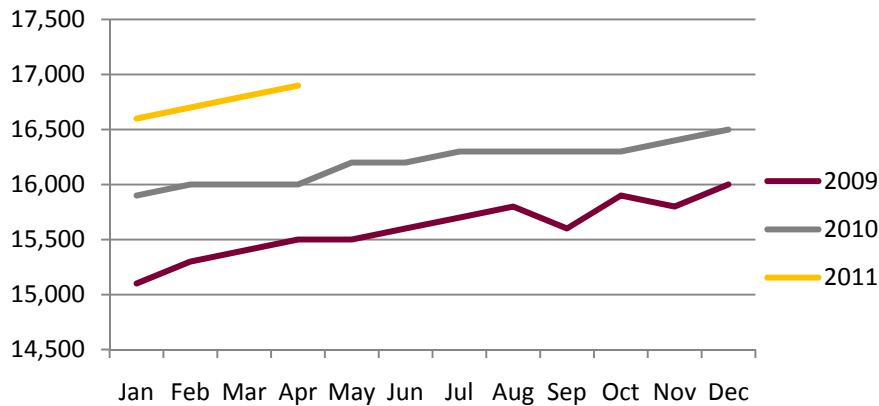
Municipality of Anchorage 2008-Present



Preliminary numbers for Anchorage's employment show an average increase of 1,100 jobs for 2011 vs. 2010, with a month-to-month (Apr. 11 vs. April. 10) comparison showing an increase of 700 jobs. The employment numbers are still showing growth over the highs of 2008, but are slowing down.

Health Care Employment

Municipality of Anchorage 2009-Present

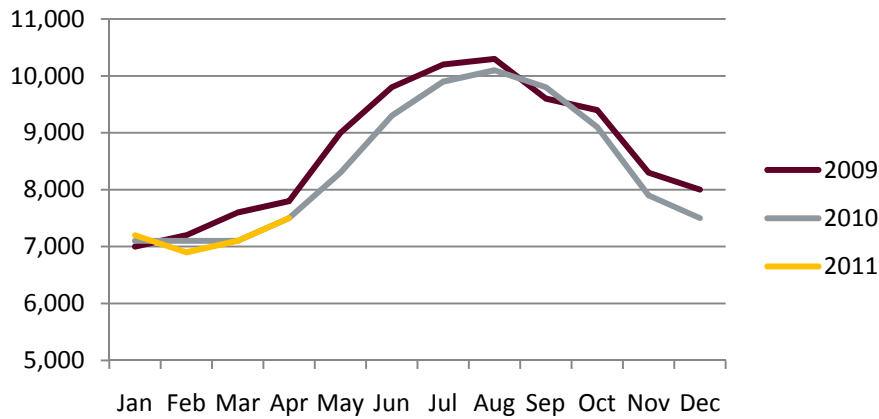


In February we reported a preliminary loss of 200 jobs in the health care sector. As revisions have come in we have seen this preliminary loss disappear and change into growth.

In January we were averaging 16,600 Health Care jobs, in April we are averaging 16,900 jobs. Compared to 2010 this is a growth of about 775 jobs or about 4.8 percent growth. This continues to be a hot sector for growth.

Construction Employment

Municipality of Anchorage 2009-Present

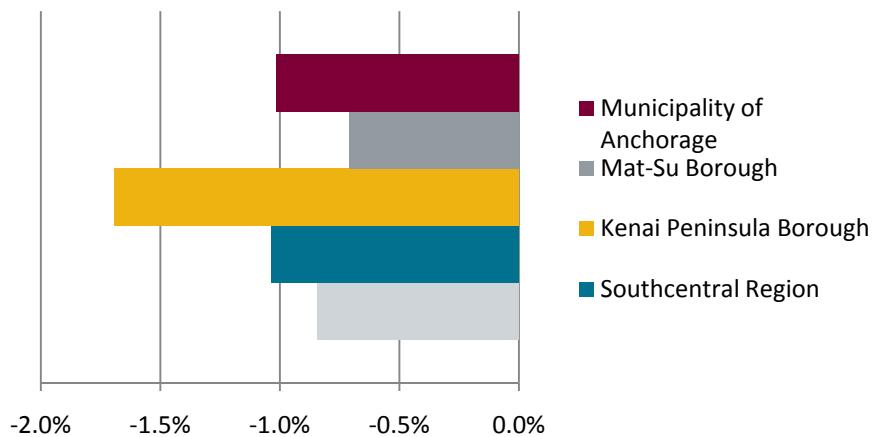


Construction is a naturally cyclical industry. On average year-to-date this sector is down 25 jobs. March to April showed an increase of 300 jobs which puts 2011 Construction employment right on track with 2010 levels.

Anecdotally we have been hearing that the 2011 construction season is going to be much better than the 2010 season as we see permit values for larger projects start to pick up. We will be looking for an overall growth over 2010 numbers in this sector.

Unemployment Rates

YTD 2011 vs 2010 Average



Year-to-date 2011 vs. 2010 average unemployment rates are down for the state overall. Each of the regions tracked saw a least a 0.7% decrease in their YTD average unemployment rates.

This is great news for Anchorage whose labor force grew by an average of 853 workers. The Mat-Su and Kenai Peninsula also experienced an increase in workforce by an average of 367 and 6 respectively.



Unemployment Analysis (Year-To-Date, 2011)

• Anchorage • Mat-Su Borough • Kenai Peninsula Borough •

	Jan	Feb	Mar	Apr	May	Jun	Jul	Aug	Sep	Oct	Nov	Dec	11 YTD Avg	10 YTD Avg	11 vs 10
Municipality of Anchorage	revised	revised	revised	preliminary											
Labor Force	156,242	155,238	155,438	154,867									155,446	154,594	853
Employment	145,940	145,163	145,353	145,196									145,413	143,050	2,364
Unemployment	10,302	10,075	10,085	9,671									10,033	11,544	(1,511)
Unemployment Rate	6.6%	6.5%	6.5%	6.2%									6.5%	7.5%	-1.0%
Mat-Su Borough															
Labor Force	43,892	43,546	43,527	42,995									43,490	43,124	367
Employment	39,289	39,080	39,131	39,089									39,147	38,511	637
Unemployment	4,603	4,466	4,396	3,906									4,343	4,613	(270)
Unemployment Rate	10.5%	10.3%	10.2%	9.1%									10.0%	10.7%	-0.7%
Kenai Peninsula Borough															
Labor Force	26,172	26,206	26,481	26,413									26,318	26,312	6
Employment	23,108	23,220	23,581	23,776									23,421	22,971	451
Unemployment	3,064	2,986	2,900	2,637									2,897	3,342	(445)
Unemployment Rate	11.7%	11.4%	11.1%	10.0%									11.0%	12.7%	-1.7%
Southcentral Region															
Labor Force	226,306	224,990	225,446	224,275	-	-	-	-	-	-	-	-	225,254	224,029	1,225
Employment	208,337	207,463	208,065	208,061	-	-	-	-	-	-	-	-	207,982	204,531	3,451
Unemployment	17,969	17,527	17,381	16,214	-	-	-	-	-	-	-	-	17,273	19,498	(2,226)
Unemployment Rate	7.9%	7.8%	7.7%	7.2%									7.7%	8.7%	-1.0%
State of Alaska															
Labor Force	359,660	360,092	360,689	358,797									359,810	357,927	1,883
Employment	328,621	329,908	330,979	331,041									330,137	325,397	4,741
Unemployment	31,039	30,184	29,710	27,756									29,672	32,530	(2,858)
Unemployment Rate	8.6%	8.4%	8.3%	7.7%									8.2%	9.1%	-0.8%

***Note:** These numbers reflect employment, unemployment, etc. for only those people that are residence of the specified City/Region, thus are not inclusive of people who commute to another city for their jobs. (Ex: Someone lives in Wasilla but works in Anchorage. They would be counted in the Mat-Su Borough's labor force and employment numbers, not the Municipality of Anchorage numbers)



Industry Employment Estimates 2011 Municipality of Anchorage

Industry	Jan	Feb	Mar	Apr	May	Jun	Jul	Aug	Sep	Oct	Nov	Dec	2011 YTD Avg.	2010 YTD Avg.	2011 vs 2010 Monthly Avg	% Change
	revised	revised	revised	preliminary												
Total Nonfarm	147,700	148,100	148,300	149,600									148,425	147,325	1,100	0.75%
Goods Producing	11,800	11,500	11,600	12,200									11,775	11,650	125	1.07%
Services Providing	135,800	136,600	136,700	137,500									136,650	135,700	950	0.70%
Mining and Logging ²	2,800	2,700	2,800	2,800									2,775	2,700	75	2.78%
Mining	2,700	2,700	2,700	2,700									2,700	2,700	0	0.00%
Oil & Gas	2,500	2,500	2,500	2,600									2,525	2,600	-75	-2.88%
Construction	7,200	6,900	7,100	7,500									7,175	7,200	-25	-0.35%
Manufacturing	1,900	1,900	1,800	1,900									1,875	1,800	75	4.17%
Trade/Transportation/Utilities	31,000	30,600	31,000	31,400									31,000	31,425	-425	-1.35%
Wholesale Trade	4,300	4,300	4,400	4,400									4,350	4,425	-75	-1.69%
Retail Trade	16,700	16,400	16,600	16,800									16,625	16,775	-150	-0.89%
Trans/Warehouse/Utilities	10,000	9,900	10,100	10,200									10,050	10,225	-175	-1.71%
Air Transportation	2,800	2,700	2,800	2,800									2,775	2,800	-25	-0.89%
Information	4,000	4,000	4,000	4,000									4,000	4,025	-25	-0.62%
Financial Activities	8,800	8,800	8,700	8,800									8,775	8,725	50	0.57%
Professional & Business Svcs	17,800	18,100	18,200	18,100									18,050	17,650	400	2.27%
Educational & Health Services	22,200	22,300	22,300	22,300									22,275	21,425	850	3.97%
Health Care	16,600	16,700	16,800	16,900									16,750	15,975	775	4.85%
Leisure & Hospitality	15,100	15,400	15,500	15,600									15,400	15,150	250	1.65%
Accommodation	3,100	3,100	3,100	3,100									3,100	3,100	0	0.00%
Food Svcs & Drinking Places	10,000	10,200	10,400	10,500									10,275	10,075	200	1.99%
Other Services	5,500	5,500	5,400	5,500									5,475	5,450	25	0.46%
Government	31,500	31,900	31,400	31,800									31,650	31,800	-150	-0.47%
Federal Government	9,500	9,500	9,500	9,500									9,500	9,525	-25	-0.26%
State Government	10,500	10,800	10,800	10,800									10,725	10,700	25	0.23%
State Education	2,600	2,900	2,900	2,900									2,825	2,750	75	2.73%
Local Government	11,400	11,600	11,200	11,600									11,450	11,550	-100	-0.87%
Local Education	8,400	8,600	8,300	8,700									8,500	8,600	-100	-1.16%
Tribal Government ¹	-	-	-	-									-	-		

- Nonfarm Wage & Salary excludes self-employed workers, fishers, domestics, and unpaid family workers.

- Government includes employees of public school systems and the University of Alaska.

- Beginning January 2001, wage and salary employment estimates were published under a new classification system. The Standard Industrial Classification system (SIC) has been replaced by the North American Industry Classification System (NAICS). Data prior to 2001 are comparable only at the Total Nonfarm and Government levels.

^{1/} As of January 2001, certain federally-recognized tribal entities were moved to Local Government, which created a series break for Total Government and Local Government. Please see the April 2002 Alaska Economic Trends publication for a detailed explanation.

^{2/} This category was called "Natural Resources and Mining" in previous years. The change is in name only; the industries it includes remain the same.

- Source: Alaska Department of Labor and Workforce Development, Research and Analysis Section

Quick Comparisons		
11 vs 10		
April	700	0.47%
11 vs 10		
1st Qtr	1,233	0.84%
11 vs 10		
2nd Qtr YTD	700	0.47%
11 vs 10 3rd		
Qtr.	N/A	N/A
11 vs 10 4th		
Qtr.	N/A	N/A

* **Note:** The above numbers are representative of all people employed in the Municipality of Anchorage, this is inclusive of workers who claim residence outside of the Municipality of Anchorage. (Ex: someone who lives in the Mat-Su, but works in Anchorage would be included in these number)



Industry Employment Estimates 2011 State of Alaska

Industry	Jan	Feb	Mar	Apr	May	Jun	Jul	Aug	Sep	Oct	Nov	Dec	2011 YTD Avg.	2010 YTD Avg.	2011 vs 2010 Monthly Avg	% Change
	revised	revised	revised	preliminary												
Total Nonfarm	310,500	315,500	317,400	322,000									316,350	308,600	7,750	2.51%
Goods Producing	38,600	40,100	41,000	41,000									40,175	38,750	1,425	3.68%
Services Providing	271,900	275,400	276,400	281,000									276,175	269,850	6,325	2.34%
Mining and Logging ²	15,100	15,400	15,700	15,900									15,525	14,375	1,150	8.00%
Mining	14,900	15,200	15,400	15,500									15,250	14,175	1,075	7.58%
Oil & Gas	13,000	12,900	12,900	13,000									12,950	12,100	850	7.02%
Construction	12,300	12,200	12,800	14,500									12,950	13,125	-175	-1.33%
Manufacturing	11,200	12,500	12,500	10,600									11,700	11,250	450	4.00%
Seafood Processing	7,500	8,700	9,000	7,600									8,200	7,850	350	4.46%
Trade/Transportation/Utilities	60,600	60,400	60,900	62,800									61,175	59,250	1,925	3.25%
Wholesale Trade	5,900	5,900	6,000	6,000									5,950	5,975	-25	-0.42%
Retail Trade	34,200	33,800	33,900	35,100									34,250	34,000	250	0.74%
Food & Beverage Stores	5,900	6,000	5,900	6,000									5,950	6,075	-125	-2.06%
General Merchandise Stores	9,800	9,800	9,700	10,000									9,825	9,775	50	0.51%
Trans/Warehouse/Utilities	20,500	20,700	21,000	21,700									20,975	19,275	1,700	8.82%
Air Transportation	5,100	5,300	5,500	5,600									5,375	5,325	50	0.94%
Truck Transportation	3,000	3,200	3,300	3,300									3,200	2,900	300	10.34%
Information	6,300	6,400	6,400	6,400									6,375	6,275	100	1.59%
Telecommunications	4,200	4,200	4,200	4,300									4,225	4,100	125	3.05%
Financial Activities	15,000	15,000	15,100	15,100									15,050	14,475	575	3.97%
Professional & Business Svcs	24,800	25,500	25,400	26,000									25,425	25,075	350	1.40%
Educational & Health Services	42,800	43,200	43,200	43,100									43,075	41,200	1,875	4.55%
Health Care	30,900	31,000	31,200	31,400									31,125	29,550	1,575	5.33%
Leisure & Hospitality	27,600	28,500	29,400	30,400									28,975	27,250	1,725	6.33%
Accommodation	6,300	6,300	6,300	6,000									6,225	6,050	175	2.89%
Food Svcs & Drinking Places	17,400	18,700	19,100	19,600									18,700	17,475	1,225	7.01%
Other Services	11,400	11,300	11,300	11,500									11,375	11,050	325	2.94%
Government	83,400	85,100	84,700	85,700									84,725	85,275	-550	-0.64%
Federal Government	16,200	16,400	16,600	16,600									16,450	16,825	-375	-2.23%
State Government	25,200	26,300	26,400	26,700									26,150	26,075	75	0.29%
State Education	7,500	8,600	8,600	8,600									8,325	8,275	50	0.60%
Local Government	42,000	42,400	41,700	42,400									42,125	42,375	-250	-0.59%
Local Education	24,700	25,400	24,800	25,500									25,100	25,150	-50	-0.20%
Tribal Government ¹	3,500	3,500	3,700	3,700									3,600	3,550	50	1.41%

- Nonfarm Wage & Salary excludes self-employed workers, fishers, domestics, and unpaid family workers.

- Government includes employees of public school systems and the University of Alaska.

- Beginning January 2001, wage and salary employment estimates were published under a new classification system. The Standard Industrial Classification system (SIC) has been replaced by the North American Industry Classification System (NAICS). Data prior to 2001 are comparable only at the Total Nonfarm and Government levels.

^{1/} As of January 2001, certain federally-recognized tribal entities were moved to Local Government, which created a series break for Total Government and Local Government. [Please see the April 2002 Alaska Economic Trends publication for a detailed explanation.](#)

^{2/} This category was called "Natural Resources and Mining" in previous years. The change is in name only; the industries it includes remain the same.

- Source: Alaska Department of Labor and Workforce Development, Research and Analysis Section

Quick Comparisons		
11 vs 10		
April	7,200	2.29%
11 vs 10		
1st Qtr	7,933	2.59%
11 vs 10		
2nd Qtr YTD	7,200	2.29%
11 vs 10 3rd		
Qtr.		0.00%
11 vs 10		
4th Qtr		0.00%

Click Bishop
Commissioner

P.O. Box 111149
Juneau, AK 99811-1149
www.labor.alaska.gov



Beth Leschper
Communications Director

907.465.2700
cell: 907.723.1321
beth.leschper@alaska.gov

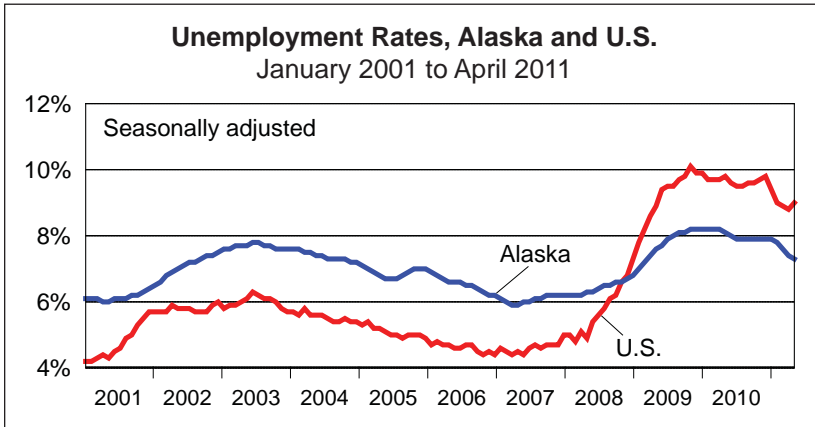
Press Release

COMMISSIONER'S OFFICE

May 20, 2011

No. 11-29

Unemployment rate at 7.3 percent in April



Alaska's seasonally adjusted unemployment rate for April fell slightly to 7.3 percent, down from March's unchanged revised rate of 7.4 percent. National unemployment rose to 9.0 percent in April, up from 8.8 percent in March.

Jobless rates for Alaska and the nation remain below where they were a year ago, but Alaska's picture is still considerably brighter than the nation's. However, despite the minor increase in the national rate between March and April, U.S. employment has been growing for eight months.

The not seasonally adjusted jobless rates around the state fell in all but one region, Southwest — a typical seasonal occurrence as some of its ground fisheries and crabbing seasons wind down. In most cases, April's rates were less than one percentage point below year-ago levels. Anchorage's unemployment rate was down 0.9 percentage point to 6.2 percent in April, while Fairbanks and Juneau each saw moderate over-the-year declines of a half a percentage point.

The North Slope Borough's 4.1 percent unemployment rate was the lowest in the state for April. The Wade Hampton Census Area had the highest rate, at 20.6 percent. However, these numbers should continue to improve in the coming months as Alaska's construction, fishing, and visitor industries power up for the season.

Alaska Nonfarm Payroll Employment¹

	Preliminary 4/11	Revised 3/11	Revised 4/10	Year-over-year change		
				4/10	90% confidence interval ²	
Total Nonfarm Employment ³	322,000	317,400	314,800	7,200	-183	14,583
Mining and Logging	15,900	15,700	14,800	1,100	307	1,893
Oil and Gas	13,000	12,900	12,200	800	-	-
Construction	14,500	12,800	14,100	400	-2,183	2,983
Manufacturing	10,600	12,500	11,000	-400	-1,394	594
Seafood Processing	7,600	9,000	7,400	200	-	-
Trade, Transportation, and Utilities	62,800	60,900	60,500	2,300	-72	4,672
Retail Trade	35,100	33,900	34,600	500	-1,528	2,528
Information	6,400	6,400	6,200	200	-381	781
Financial Activities	15,100	15,100	14,500	600	-1,343	2,543
Professional and Business Services	26,000	25,400	25,300	700	-1,093	2,493
Educational ⁴ and Health Services	43,100	43,200	41,500	1,600	332	2,868
Health Care	31,400	31,200	29,700	1,700	-	-
Leisure and Hospitality	30,400	29,400	28,500	1,900	-137	3,937
Accommodations	6,000	6,300	6,300	-300	-	-
Food Svcs. and Drinking Places	19,600	19,100	18,200	1,400	-	-
Other Services	11,500	11,300	11,300	200	-2,976	3,376
Government ⁵	85,700	84,700	87,100	-1,400	-	-

Notes: A dash indicates that confidence intervals are not available at this level of detail.

¹Not seasonally adjusted

²Based on the margin of error of the estimate, a 90 percent confidence interval statistically determines a range of values within which the "true" value falls with a 90 percent level of confidence. For more information, go to <http://labor.alaska.gov/research/c-i.pdf>.

³Excludes the self-employed, fishermen and other agricultural workers, and private household workers

⁴Private education only

⁵Includes public schools, the University of Alaska, and federally recognized tribal entities

Unemployment Rates, Seasonally Adjusted

	4/11	3/11	4/10
Alaska	7.3%	7.4%	8.1%
U.S.	9.0%	8.8%	9.8%

Sources for graph and tables: Alaska Department of Labor and Workforce Development, Research and Analysis Section; and U.S. Bureau of Labor Statistics

Beginning with the production of preliminary estimates for March 2011, production of state and metropolitan area Current Employment Statistics estimates has transitioned from state workforce agencies to the U.S. Bureau of Labor Statistics. Concurrent with this transition, the BLS implemented several changes to the methods to help standardize estimation across states. While these changes reduce the potential for statistical bias in state and metropolitan area estimates, they may increase month-to-month variability. More detailed information on the CES changes is available on the BLS Web site at <http://www.bls.gov/sac/cesprocs.htm>.

Contact: Neal Fried, Economist (907) 269-4861

Research and Analysis Web site: <http://laborstats.alaska.gov>

Labor Force by Borough and Census Area, Not Seasonally Adjusted¹

	Civilian Labor Force			Unemployed					
	4/11 ^P	3/11	4/10	Number			Rate		
				4/11 ^P	3/11	4/10	4/11 ^P	3/11	4/10
Alaska Statewide	358,797	360,689	357,542	27,756	29,710	29,707	7.7	8.2	8.3
Anchorage/Mat-Su Region	197,862	198,965	196,249	13,577	14,481	14,984	6.9	7.3	7.6
Municipality of Anchorage	154,867	155,438	153,733	9,671	10,085	10,916	6.2	6.5	7.1
Matanuska-Susitna Borough	42,995	43,527	42,516	3,906	4,396	4,068	9.1	10.1	9.6
Gulf Coast Region	37,873	38,241	38,233	3,579	3,880	3,789	9.5	10.1	9.9
Kenai Peninsula Borough	26,413	26,481	26,714	2,637	2,900	2,872	10.0	11.0	10.8
Kodiak Island Borough	6,569	6,821	6,601	443	436	464	6.7	6.4	7.0
Valdez-Cordova Census Area	4,891	4,939	4,918	499	544	453	10.2	11.0	9.2
Interior Region	53,894	53,602	53,953	4,146	4,484	4,351	7.7	8.4	8.1
Denali Borough	895	840	896	136	160	135	15.2	19.0	15.1
Fairbanks North Star Borough	46,366	46,140	46,371	3,119	3,357	3,336	6.7	7.3	7.2
Southeast Fairbanks Census Area	3,522	3,545	3,549	396	432	396	11.2	12.2	11.2
Yukon-Koyukuk Census Area	3,111	3,077	3,137	495	535	484	15.9	17.4	15.4
Northern Region	12,893	12,879	12,462	1,209	1,233	1,241	9.4	9.6	10.0
Nome Census Area	4,248	4,220	4,179	518	517	555	12.2	12.3	13.3
North Slope Borough	5,558	5,561	5,283	227	244	264	4.1	4.4	5.0
Northwest Arctic Borough	3,087	3,098	3,000	464	472	422	15.0	15.2	14.1
Southeast Region	38,998	38,334	39,297	2,900	3,299	3,059	7.4	8.6	7.8
Haines Borough	1,239	1,136	1,261	119	127	132	9.6	11.2	10.5
Hoonah-Angoon Census Area ²	940	873	938	183	218	174	19.5	25.0	18.6
Juneau, City and Borough of	18,464	18,469	18,532	981	1,075	1,067	5.3	5.8	5.8
Ketchikan Gateway Borough ²	7,718	7,499	7,787	590	662	660	7.6	8.8	8.5
Petersburg Census Area ²	1,719	1,635	-	180	206	-	10.5	12.6	-
Prince of Wales-Hyder Census Area ²	2,532	2,453	-	372	448	-	14.7	18.3	-
Prince of Wales-Outer Ketchikan Census Area ²	-	-	2,502	-	-	349	-	-	13.9
Sitka, City and Borough of	4,536	4,498	4,642	266	305	270	5.9	6.8	5.8
Skagway, Municipality of ²	557	526	564	90	122	93	16.2	23.2	16.5
Wrangell, City and Borough of ²	994	941	-	82	95	-	8.2	10.1	-
Wrangell-Petersburg Census Area ²	-	-	2,770	-	-	280	-	-	10.1
Yakutat, City and Borough of	299	304	301	37	41	34	12.4	13.5	11.3
Southwest Region	17,278	18,671	17,345	2,346	2,335	2,281	13.6	12.5	13.2
Aleutians East Borough	1,237	1,263	1,229	122	96	88	9.9	7.6	7.2
Aleutians West Census Area	2,910	4,108	2,897	219	158	177	7.5	3.8	6.1
Bethel Census Area	6,900	6,972	6,930	1,071	1,100	1,097	15.5	15.8	15.8
Bristol Bay Borough	509	483	526	49	50	46	9.6	10.4	8.7
Dillingham Census Area	2,085	2,135	2,102	225	244	222	10.8	11.4	10.6
Lake and Peninsula Borough	941	934	953	105	110	93	11.2	11.8	9.8
Wade Hampton Census Area	2,696	2,776	2,708	555	577	558	20.6	20.8	20.6

P = Preliminary. As more information becomes available, data are revised every month for the previous month and again at the end of every calendar year.

Note: The official definition of unemployment excludes anyone who has not made an active attempt to find work in the four-week period up to and including the week that includes the 12th of the reference month. Many in rural Alaska do not meet the definition because they have not conducted an active job search due to the scarcity of employment opportunities.

¹Unemployment rates that are not seasonally adjusted should not be compared with those that are.

²Because of the creation of new boroughs, this borough or census area has been changed or no longer exists. Data for the Skagway Municipality and Hoonah-Angoon Census Area (previously the Skagway-Hoonah-Angoon Census Area) became available in 2010. Data for the City and Borough of Wrangell, Petersburg Census Area, and Prince of Wales-Hyder went into effect in January 2011. Prior to January 2011, data were published for Wrangell-Petersburg Census Area and Prince of Wales-Outer Ketchikan Census Area.

Source: Alaska Department of Labor and Workforce Development, Research and Analysis Section; and U.S. Bureau of Labor Statistics