

AEDC August 2011 Employment Report

ANCHORAGE

5.8% Unemployment Rate

1.9% Jobs down in Aug. 2011 from high of 7.7 in Feb. 2011

1,902 Average more jobs (YTD) in 2011 than 2010

0.95% More Services Producing Jobs (YTD) in 2011 than 2010

1.71% More Professional & Business Services Jobs (YTD) in 2011 than 2010

4.52% More Education & Health Services Jobs (YTD) in 2011 than 2010

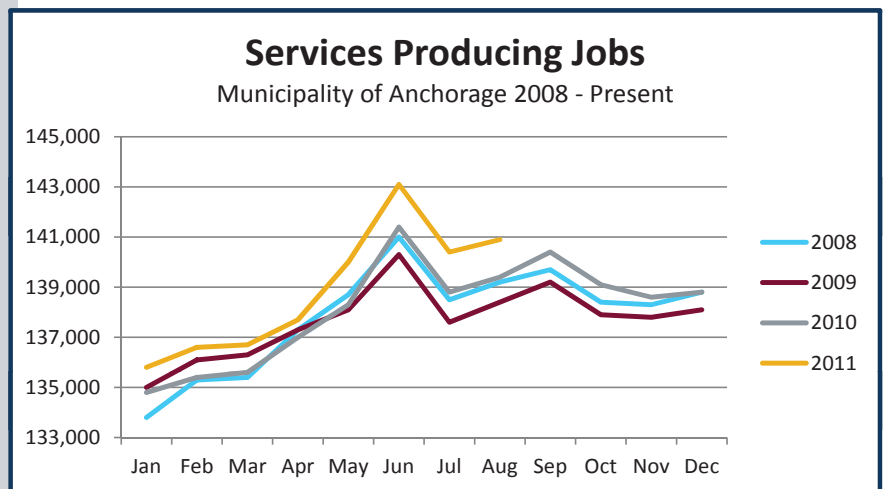
750 of these jobs in the Health Care sector

Executive Summary

The unemployment rate in Anchorage is down almost 2 percentage points in August 2011 from its recent high of 7.7 percent in February 2010, settling at 5.8 percent. Overall unemployment is averaging 6.3 percent in Anchorage for the first 8 months of 2011, which is 0.8 percent below 2010 year-to-date average. Monthly labor force growth in Anchorage has continued to track above 2010 levels and is currently averaging 1,902 more workers in 2011, compared to 2010. Job growth continues to outpace labor force growth, which really means that the Anchorage economy is growing in the face of continued national uncertainty.

Services Producing Jobs

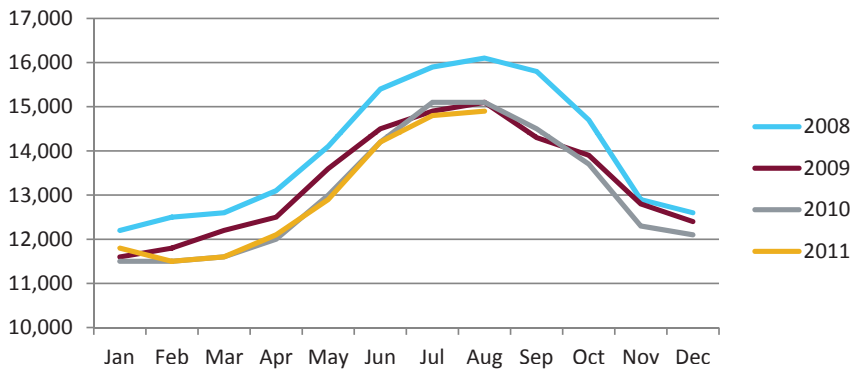
Services producing jobs in Anchorage (engineering, retail, tourism, healthcare, etc.) are up 2011 over 2010 by 1,313 jobs, or 0.95 percent. The sectors seeing the most growth are professional & business services (up 313, 1.71 percent), and education and health services (up 975 jobs, 4.52 percent, with 750 of those in the healthcare sector). It is also important to note that the seasonal nature of the services industries (tourism and retail) results in an employment spike in the summertime.



Job growth continues to outpace labor force growth, which means that the Anchorage economy is growing in the face of continued national uncertainty.

Goods Producing Jobs

Municipality of Anchorage 2008 - Present



Goods Producing Jobs

Goods producing jobs which are construction work, mining, and oil & gas production are down 25 jobs. Manufacturing, interestingly enough, continues to show signs of growth (up 38 jobs, 1.91 percent).

The slow job growth in the goods producing sector is being offset by significant employment increases in the service sector. Job growth in the professional services and health care industries has fueled the sustained decrease in Anchorage's unemployment rate in the face of a growing labor force.



38 More Manufacturing Jobs (YTD) in 2011 than 2010

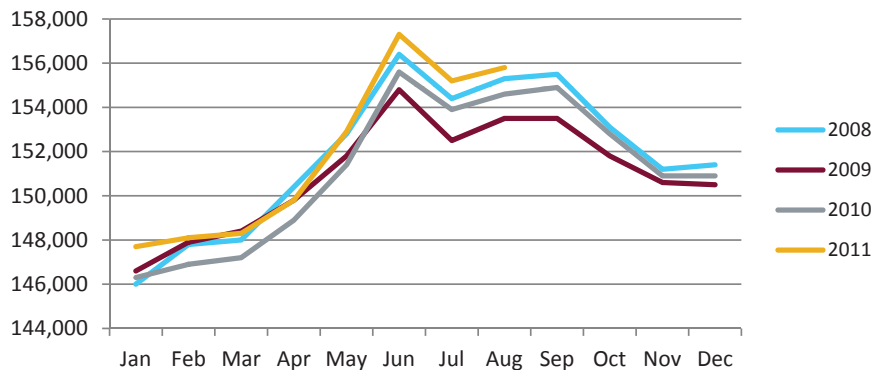
Anchorage Employment

Preliminary numbers for Anchorage's employment show an average increase of 1,288 jobs for 2011 vs. 2010, with a month-to-month (Aug '11 vs. Aug '10) comparison showing an increase of 1,200 jobs or 0.78 percent. Employment numbers are still showing overall growth over the highs of 2008.

1,288 Average increase of jobs (YTD) for 2011 vs. 2010

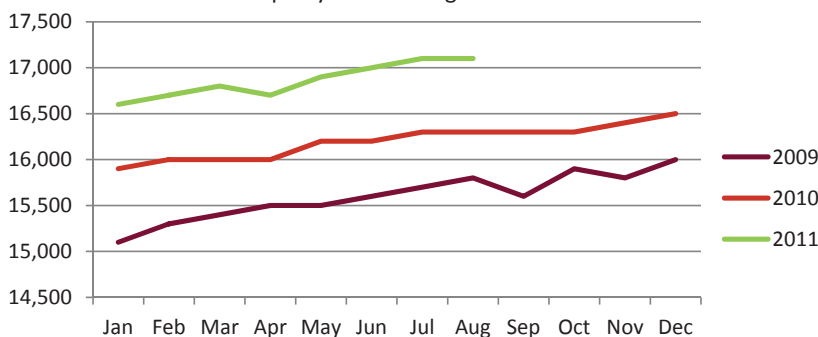
Anchorage Employment

Municipality of Anchorage 2008-Present



Health Care Employment

Municipality of Anchorage 2009-Present



Health Care Employment

In January, Anchorage was averaging 16,600 Health Care jobs and in August, Anchorage averaged 17,100 jobs. Compared to 2010 levels, this is a growth of about 750 jobs, or about 4.6 percent growth. This continues to be a hot sector for growth. Recent employment figures and long-term projections lead us to believe that the growth will be sustained.

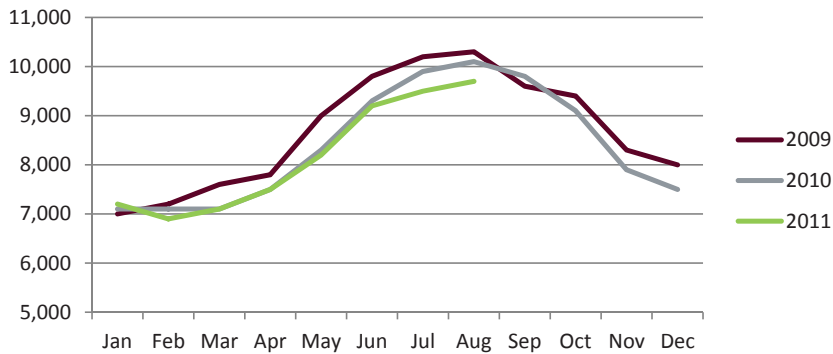


17,100

Health Care Jobs (YTD) in 2011 than 2010

Construction Employment

Municipality of Anchorage 2009-Present



Construction Employment

Construction is a naturally cyclical industry. On average year-to-date this sector is down 138 jobs. July to August showed an average increase of 200 jobs which keeps 2011 construction employment behind 2010 levels.

We expected construction to have a bigger showing this year, because of projects like Providence's Generations Project and their new extended care facility. We have also seen building permit application dollars up considerably over 2010, but this could be a precursor to next year as they are just applications and not approvals.



138

Less Construction Jobs (YTD) in 2010 vs. 2011



200

Avg. increase of jobs from July 2011 to Aug. 2011

Transportation Employment

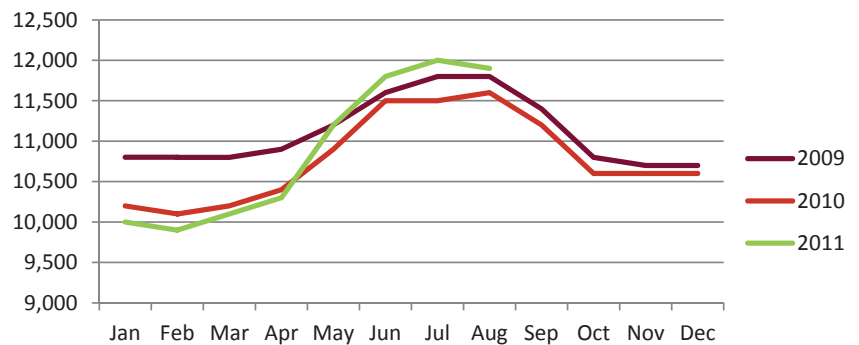
AEDC predicted a 300 job increase in transportation jobs for 2011.

The year started out a little behind, but then in about May it turned around and the industry started to see growth. The year started with transportation employment around 10,000 jobs and ended August averaging 11,900 jobs. Keeping it above the recent highs of 2009.

This growth could be attributed to the increase in passenger aircraft landing in Anchorage (JetBlue and Edelweiss) and the increased tonnage transiting through Ted Stevens Anchorage International Airport.

Transportation Employment

Municipality of Anchorage 2009-Present



11,900

Transportation jobs in August 2011



Unemployment Analysis (Year-To-Date, 2011)

• Anchorage • Mat-Su Borough • Kenai Peninsula Borough •

	Jan	Feb	Mar	Apr	May	Jun	Jul	Aug	Sep	Oct	Nov	Dec	11 YTD Avg	10 YTD Avg	11 vs 10
	revised	revised	revised	revised	revised	revised	revised	preliminary							
Municipality of Anchorage															
Labor Force	156,242	155,238	155,438	154,487	154,375	156,771	155,568	154,946					155,383	153,481	1,902
Employment	145,940	145,163	145,353	144,900	144,887	146,288	146,278	145,902					145,589	142,571	3,018
Unemployment	10,302	10,075	10,085	9,587	9,488	10,483	9,290	9,044					9,794	10,911	(1,116)
Unemployment Rate	6.6%	6.5%	6.5%	6.2%	6.1%	6.7%	6.0%	5.8%					6.3%	7.1%	-0.8%
Mat-Su Borough															
Labor Force	43,892	43,546	43,527	42,882	42,597	43,242	42,797	42,503					43,123	42,397	726
Employment	39,289	39,080	39,131	39,009	39,005	39,383	39,380	39,278					39,194	38,382	813
Unemployment	4,603	4,466	4,396	3,873	3,592	3,859	3,417	3,225					3,929	4,016	(87)
Unemployment Rate	10.5%	10.3%	10.1%	9.0%	8.4%	8.9%	8.0%	7.6%					9.1%	9.5%	-0.4%
Kenai Peninsula Borough															
Labor Force	26,172	26,206	26,481	26,584	28,026	29,611	29,365	28,820					27,658	27,632	26
Employment	23,108	23,220	23,581	23,970	25,623	27,025	27,081	26,609					25,027	24,823	204
Unemployment	3,064	2,986	2,900	2,614	2,403	2,586	2,284	2,211					2,631	2,809	(178)
Unemployment Rate	11.7%	11.4%	11.0%	9.8%	8.6%	8.7%	7.8%	7.7%					9.5%	10.2%	-0.7%
Southcentral Region															
Labor Force	226,306	224,990	225,446	223,953	224,998	229,624	227,730	226,269	-	-	-	-	226,150	223,510	2,639
Employment	208,337	207,463	208,065	207,879	209,515	212,696	212,739	211,789	-	-	-	-	209,528	205,775	3,752
Unemployment	17,969	17,527	17,381	16,074	15,483	16,928	14,991	14,480	-	-	-	-	16,622	17,735	(1,113)
Unemployment Rate	7.9%	7.8%	7.7%	7.2%	6.9%	7.4%	6.6%	6.4%					7.3%	7.9%	-0.6%
State of Alaska															
Labor Force	359,660	360,092	360,689	358,461	364,046	372,587	375,280	372,889					365,463	361,754	3,709
Employment	328,621	329,908	330,979	330,936	337,353	343,592	349,602	348,078					337,384	332,044	5,340
Unemployment	31,039	30,184	29,710	27,525	26,693	28,995	25,678	24,811					28,079	29,710	(1,631)
Unemployment Rate	8.6%	8.4%	8.2%	7.7%	7.3%	7.8%	6.8%	6.7%					7.7%	8.2%	-0.5%

***Note:** These numbers reflect employment, unemployment, etc. for only those people that are residence of the specified City/Region, thus are not inclusive of people who commute to another city for their jobs.
 (Ex: Someone lives in Wasilla but works in Anchorage. They would be counted in the Mat-Su Borough's labor force and employment numbers, not the Municipality of Anchorage numbers)



Industry Employment Estimates 2011 Municipality of Anchorage

Industry	Jan	Feb	Mar	Apr	May	Jun	Jul	Aug	Sep	Oct	Nov	Dec	2011 YTD Avg.	2010 YTD Avg.	2011 vs 2010 Monthly Avg	% Change
	revised	revised	revised	revised	revised	revised	revised	preliminary								
Total Nonfarm	147,700	148,100	148,300	149,800	152,900	157,300	155,200	155,800					151,888	150,600	1,288	0.85%
Goods Producing	11,800	11,500	11,600	12,100	12,900	14,200	14,800	14,900					12,975	13,000	-25	-0.19%
Services Providing	135,800	136,600	136,700	137,700	140,000	143,100	140,400	140,900					138,900	137,588	1,313	0.95%
Mining and Logging ²	2,800	2,700	2,800	2,800	2,800	3,000	2,900	2,900					2,838	2,763	75	2.71%
Mining	2,700	2,700	2,700	2,700	2,800	3,000	2,900	2,900					2,800	2,763	38	1.36%
Oil & Gas	2,500	2,500	2,500	2,600	2,600	2,800	2,600	2,600					2,588	2,613	-25	-0.96%
Construction	7,200	6,900	7,100	7,500	8,200	9,200	9,500	9,700					8,163	8,300	-138	-1.66%
Manufacturing	1,900	1,900	1,800	1,800	1,900	2,000	2,400	2,300					2,000	1,963	38	1.91%
Trade/Transportation/Utilities	31,000	30,600	31,000	31,500	32,800	33,700	34,200	34,000					32,350	32,375	-25	-0.08%
Wholesale Trade	4,300	4,300	4,400	4,400	4,600	4,800	4,900	4,900					4,575	4,588	-13	-0.27%
Retail Trade	16,700	16,400	16,600	16,800	16,900	17,200	17,300	17,300					16,900	16,988	-88	-0.52%
Trans/Warehouse/Utilities	10,000	9,900	10,100	10,300	11,200	11,800	12,000	11,900					10,900	10,800	100	0.93%
Air Transportation	2,800	2,700	2,800	2,800	3,000	3,100	3,100	3,100					2,925	2,863	63	2.18%
Information	4,000	4,000	4,000	4,000	4,000	4,000	4,000	4,000					4,000	4,063	-63	-1.54%
Financial Activities	8,800	8,800	8,700	8,900	9,000	9,200	9,300	9,200					8,988	8,925	63	0.70%
Professional & Business Svcs	17,800	18,100	18,200	18,100	18,700	19,300	19,300	19,300					18,600	18,288	313	1.71%
Educational & Health Services	22,200	22,300	22,300	22,300	22,700	22,800	22,900	22,800					22,538	21,563	975	4.52%
Health Care	16,600	16,700	16,800	16,700	16,900	17,000	17,100	17,100					16,863	16,113	750	4.65%
Leisure & Hospitality	15,100	15,400	15,500	15,600	16,200	16,700	17,100	17,200					16,100	15,688	413	2.63%
Accommodation	3,100	3,100	3,100	3,100	3,200	3,600	3,600	3,600					3,300	3,238	63	1.93%
Food Svcs & Drinking Places	10,000	10,200	10,400	10,600	11,000	11,200	11,400	11,400					10,775	10,475	300	2.86%
Other Services	5,500	5,500	5,400	5,600	5,800	5,900	5,800	5,900					5,675	5,650	25	0.44%
Government	31,500	31,900	31,400	31,800	30,900	31,400	27,800	28,500					30,650	31,038	-388	-1.25%
Federal Government	9,500	9,500	9,500	9,400	9,500	9,700	9,700	9,600					9,550	9,838	-288	-2.92%
State Government	10,500	10,800	10,800	10,800	10,200	10,500	10,100	9,900					10,450	10,425	25	0.24%
State Education	2,600	2,900	2,900	2,900	2,000	2,000	1,900	1,700					2,363	2,350	13	0.53%
Local Government	11,400	11,600	11,200	11,600	11,200	11,200	7,900	9,000					10,638	10,750	-113	-1.05%
Local Education	8,400	8,600	8,300	8,700	8,300	8,300	4,900	6,100					7,700	7,788	-88	-1.12%
Tribal Government ¹	-	-	-	-	-	-	-	-					-	-		

- Nonfarm Wage & Salary excludes self-employed workers, fishers, domestics, and unpaid family workers.

- Government includes employees of public school systems and the University of Alaska.

- Beginning January 2001, wage and salary employment estimates were published under a new classification system. The Standard Industrial Classification system (SIC) has been replaced by the North American Industry Classification System (NAICS). Data prior to 2001 are comparable only at the Total Nonfarm and Government levels.

^{1/} As of January 2001, certain federally-recognized tribal entities were moved to Local Government, which created a series break for Total Government and Local Government. Please see the April 2002 Alaska Economic Trends publication for a detailed explanation.

^{2/} This category was called "Natural Resources and Mining" in previous years. The change is in name only; the industries it includes remain the same.

- Source: Alaska Department of Labor and Workforce Development, Research and Analysis Section

Quick Comparisons		
11 vs 10 August	1,200	0.78%
11 vs 10 1st Qtr	1,233	0.84%
11 vs 10 2nd Qtr YTD	1,367	0.90%
11 vs 10 3rd Qtr	1,250	0.81%
11 vs 10 4th Qtr	N/A	N/A

* **Note:** The above numbers are representative of all people employed in the Municipality of Anchorage, this is inclusive of workers who claim residence outside of the Municipality of Anchorage. (Ex: someone who lives in the Mat-Su, but works in Anchorage would be included in these number)



Industry Employment Estimates 2011 State of Alaska

Industry	Jan	Feb	Mar	Apr	May	Jun	Jul	Aug	Sep	Oct	Nov	Dec	2011 YTD Avg.	2010 YTD Avg.	2011 vs 2010 Monthly Avg	% Change
	revised	revised	revised	revised	revised	revised	revised	preliminary								
Total Nonfarm	310,500	315,500	317,400	321,400	328,500	349,500	355,300	352,400					331,313	324,613	6,700	2.06%
Goods Producing	38,600	40,100	41,000	40,300	41,700	53,000	61,000	58,500					46,775	45,213	1,563	3.46%
Services Providing	271,900	275,400	276,400	281,100	286,800	296,500	294,300	293,900					284,538	279,400	5,138	1.84%
Mining and Logging ²	15,100	15,400	15,700	16,000	16,300	17,000	17,200	17,200					16,238	15,213	1,025	6.74%
Mining	14,900	15,200	15,400	15,600	15,800	16,500	16,700	16,700					15,850	14,950	900	6.02%
Oil & Gas	13,000	12,900	12,900	13,100	13,200	13,500	13,600	13,600					13,225	12,588	638	5.06%
Construction	12,300	12,200	12,800	14,500	16,200	18,900	19,000	19,100					15,625	15,863	-238	-1.50%
Manufacturing	11,200	12,500	12,500	9,800	9,200	17,100	24,800	22,200					14,913	14,138	775	5.48%
Seafood Processing	7,500	8,700	9,000	6,400	5,600	10,800	17,500	15,000					10,063	10,550	-488	-4.62%
Trade/Transportation/Utilities	60,600	60,400	60,900	62,700	65,900	68,100	69,400	69,700					64,713	62,838	1,875	2.98%
Wholesale Trade	5,900	5,900	6,000	6,000	6,200	6,500	6,700	6,700					6,238	6,263	-25	-0.40%
Retail Trade	34,200	33,800	33,900	35,100	36,500	37,600	37,900	37,900					35,863	35,375	488	1.38%
Food & Beverage Stores	5,900	6,000	5,900	6,100	6,300	6,500	6,600	6,500					6,225	6,288	-63	-0.99%
General Merchandise Stores	9,800	9,800	9,700	10,000	10,000	10,400	10,300	10,500					10,063	9,950	113	1.13%
Trans/Warehouse/Utilities	20,500	20,700	21,000	21,600	23,200	24,000	24,800	25,100					22,613	21,200	1,413	6.66%
Air Transportation	5,100	5,300	5,500	5,600	6,000	6,300	6,400	6,400					5,825	5,638	188	3.33%
Truck Transportation	3,000	3,200	3,300	3,300	3,300	3,600	3,700	3,900					3,413	3,125	288	9.20%
Information	6,300	6,400	6,400	6,400	6,500	6,500	6,600	6,600					6,463	6,338	125	1.97%
Telecommunications	4,200	4,200	4,200	4,300	4,300	4,400	4,500	4,500					4,325	4,150	175	4.22%
Financial Activities	15,000	15,000	15,100	15,100	14,900	14,900	15,000	15,000					15,000	14,850	150	1.01%
Professional & Business Svcs	24,800	25,500	25,400	26,100	26,600	28,000	28,600	28,700					26,713	26,163	550	2.10%
Educational & Health Services	42,800	43,200	43,200	43,100	43,200	43,100	42,700	42,900					43,025	41,425	1,600	3.86%
Health Care	30,900	31,000	31,200	31,500	31,600	31,800	31,800	31,900					31,463	29,825	1,638	5.49%
Leisure & Hospitality	27,600	28,500	29,400	30,300	34,200	39,100	41,400	40,800					33,913	31,888	2,025	6.35%
Accommodation	6,300	6,300	6,300	6,000	7,100	8,100	8,300	8,300					7,088	8,025	-938	-11.68%
Food Svcs & Drinking Places	17,400	18,700	19,100	19,700	21,700	23,400	24,400	24,000					21,050	19,350	1,700	8.79%
Other Services	11,400	11,300	11,300	11,600	11,700	12,100	11,600	11,000					11,500	11,413	88	0.77%
Government	83,400	85,100	84,700	85,800	83,800	84,700	79,000	79,200					83,213	84,488	-1,275	-1.51%
Federal Government	16,200	16,400	16,600	16,700	17,300	17,700	17,700	17,500					17,013	17,788	-775	-4.36%
State Government	25,200	26,300	26,400	26,700	25,300	25,700	24,900	24,300					25,600	25,650	-50	-0.19%
State Education	7,500	8,600	8,600	8,600	7,000	6,400	6,000	5,700					7,300	7,338	-38	-0.51%
Local Government	42,000	42,400	41,700	42,400	41,200	41,300	36,400	37,400					40,600	41,050	-450	-1.10%
Local Education	24,700	25,400	24,800	25,500	23,900	23,100	17,800	19,200					23,050	23,200	-150	-0.65%
Tribal Government ¹	3,500	3,500	3,700	3,700	3,800	3,900	3,900	3,800					3,725	3,763	-38	-1.00%

- Nonfarm Wage & Salary excludes self-employed workers, fishers, domestics, and unpaid family workers.

- Government includes employees of public school systems and the University of Alaska.

- Beginning January 2001, wage and salary employment estimates were published under a new classification system. The Standard Industrial Classification system (SIC) has been replaced by the North American Industry Classification System (NAICS). Data prior to 2001 are comparable only at the Total Nonfarm and Government levels.

^{1/} As of January 2001, certain federally-recognized tribal entities were moved to Local Government, which created a series break for Total Government and Local Government. [Please see the April 2002 Alaska Economic Trends publication for a detailed explanation.](#)

^{2/} This category was called "Natural Resources and Mining" in previous years. The change is in name only; the industries it includes remain the same.

- Source: Alaska Department of Labor and Workforce Development, Research and Analysis Section

Quick Comparisons

11 vs 10		
August	6,000	1.73%
11 vs 10		
1st Qtr	7,933	2.59%
11 vs 10		
2nd Qtr YTD	5,567	1.70%
11 vs 10 3rd		
Qtr.	6,550	1.89%
11 vs 10		
4th Qtr		0.00%

Click Bishop
Commissioner

P.O. Box 111149
Juneau, AK 99811-1149

www.labor.alaska.gov

STATE OF ALASKA

DEPARTMENT OF LABOR
AND WORKFORCE DEVELOPMENT

Beth Leschper
Communications Director

907.465.2700
cell: 907.723.1321

beth.leschper@alaska.gov

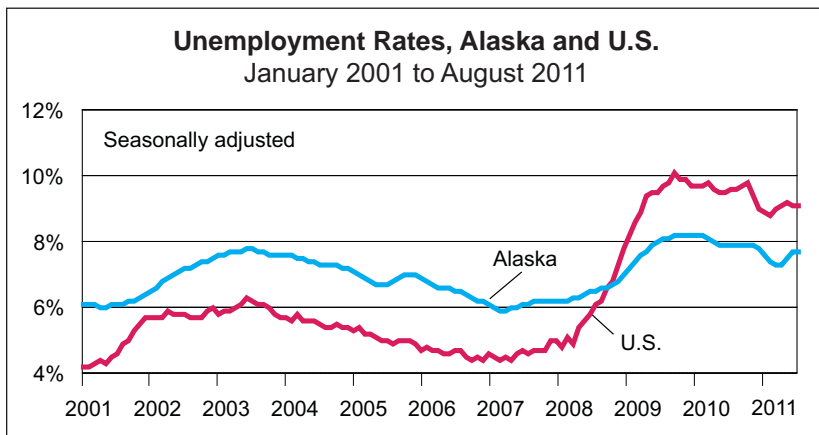
Press Release

September 16, 2011

COMMISSIONER'S OFFICE

No. 11-47

Unemployment rate at 7.7 percent in August



Alaska Nonfarm Payroll Employment¹

	Preliminary 8/11	Revised 7/11	Revised 8/10	Year-over-year change		
				8/10	90% confi- dence interval ²	
Total Nonfarm Employment ³	352,400	355,300	346,400	6,000	-1,383	13,383
Mining and Logging	17,200	17,200	16,500	700	-93	1,493
Oil and Gas	13,600	13,600	13,400	200	-	-
Construction	19,100	19,000	19,800	-700	-3,283	1,883
Manufacturing	22,200	24,800	19,800	2,400	1,406	3,394
Seafood Processing	15,000	17,500	16,000	-1,000	-	-
Trade, Transportation, and Utilities	69,700	69,400	67,500	2,200	-172	4,572
Retail Trade	37,900	37,900	36,900	1,000	-1,028	3,028
Information	6,600	6,600	6,400	200	-381	781
Financial Activities	15,000	15,000	15,400	-400	-2,343	1,543
Professional and Business Services	28,700	28,600	27,600	1,100	-693	2,893
Educational ⁴ and Health Services	42,900	42,700	41,600	1,300	32	2,568
Health Care	31,900	31,800	30,200	1,700	-	-
Leisure and Hospitality	40,800	41,400	38,200	2,600	563	4,637
Accommodations	8,300	8,300	10,900	-2,600	-	-
Food Svcs. and Drinking Places	24,000	24,400	21,800	2,200	-	-
Other Services	11,000	11,600	11,900	-900	-4,076	2,276
Government ⁵	79,200	79,000	81,700	-2,500	-	-

Notes: A dash indicates that confidence intervals are not available at this level of detail.

¹Not seasonally adjusted

²Based on the margin of error of the estimate, a 90 percent confidence interval statistically determines a range of values within which the "true" value falls with a 90 percent level of confidence. For more information, go to <http://labor.alaska.gov/research/c-i.pdf>.

³Excludes the self-employed, fishermen and other agricultural workers, and private household workers

⁴Private education only

⁵Includes public schools, the University of Alaska, and federally recognized tribal entities

Unemployment Rates, Seasonally Adjusted

	8/11	7/11	8/10
Alaska	7.7%	7.7%	7.9%
U.S.	9.1%	9.1%	9.6%

Sources for graph and tables: Alaska Department of Labor and Workforce Development, Research and Analysis Section; and U.S. Bureau of Labor Statistics

Alaska's seasonally adjusted unemployment rate for August was 7.7 percent, unchanged from July's revised rate. The national rate was 9.1 percent, also unchanged from the prior month. These jobless rates have also remained relatively static throughout 2011. In January, the nation's rate was 9.0 percent, and the state's rate was 7.8 percent.

It's not unusual for the state's jobless rate to follow the national trend. Because Alaska's employment picture remains brighter than in most of the nation, fewer Alaskan job seekers are leaving the state and more people are heading north looking for work, putting upward pressure on the state's unemployment rate. This is evidenced by the Alaska Department of Labor and Workforce Development's recently released intercensal data, which show the decade's largest population gains were in 2009 and 2010. These trends are highly likely to continue throughout 2011.

Even though unemployment hasn't dropped in 2011, Alaska remains in an enviable place among most states with a July rate that was 17th lowest in the nation. This is a historically unusual place for Alaska, whose unemployment ranked second-highest in the nation as recently as August 2007.

In August, Alaska's nonseasonally adjusted regional unemployment rates fell slightly in five of six regions. Southeast's rates were lowest in August as fishing and tourism remained at or near peak levels. Although Southwest was home to the areas with both the highest and lowest unemployment rates, that region had the highest overall unemployment and the only rate that increased in August.

Beginning with the production of preliminary estimates for March 2011, production of state and metropolitan area Current Employment Statistics estimates has transitioned from the Department of Labor and Workforce Development's Research and Analysis Section to the U.S. Bureau of Labor Statistics. Concurrent with this transition, the BLS implemented several changes to the methods to help standardize estimation across states. While these changes reduce the potential for statistical bias in state and metropolitan area estimates, they may increase month-to-month variability. More detailed information on the CES changes is available on the BLS Web site at <http://www.bls.gov/sae/cesprocs.htm>.

Contact: Neal Fried, Economist (907) 269-4861
Research and Analysis Web site: <http://laborstats.alaska.gov>

Labor Force by Borough and Census Area, Not Seasonally Adjusted¹

	Civilian Labor Force			Unemployed					
	8/11 ^P	7/11	8/10	Number			Rate		
				8/11 ^P	7/11	8/10	8/11 ^P	7/11	8/10
Alaska Statewide	372,889	375,280	366,895	24,811	25,678	25,854	6.7	6.8	7.0
Anchorage/Mat-Su Region	197,449	198,365	192,413	12,269	12,707	13,262	6.2	6.4	6.9
Municipality of Anchorage	154,946	155,568	151,171	9,044	9,290	10,020	5.8	6.0	6.6
Matanuska-Susitna Borough	42,503	42,797	41,242	3,225	3,417	3,242	7.6	8.0	7.9
Gulf Coast Region	41,944	42,603	42,292	2,988	3,124	3,054	7.1	7.3	7.2
Kenai Peninsula Borough	28,820	29,365	28,989	2,211	2,284	2,283	7.7	7.8	7.9
Kodiak Island Borough	6,903	7,151	7,066	411	461	409	6.0	6.4	5.8
Valdez-Cordova Census Area	6,221	6,087	6,237	366	379	362	5.9	6.2	5.8
Interior Region	57,062	56,239	56,390	3,704	3,792	3,663	6.5	6.7	6.5
Denali Borough	2,356	2,350	2,372	85	92	78	3.6	3.9	3.3
Fairbanks North Star Borough	48,096	47,695	47,371	2,846	2,904	2,897	5.9	6.1	6.1
Southeast Fairbanks Census Area	3,615	3,499	3,664	333	340	315	9.2	9.7	8.6
Yukon-Koyukuk Census Area	2,995	2,695	2,983	440	456	373	14.7	16.9	12.5
Northern Region	12,622	12,383	12,411	1,206	1,260	1,205	9.6	10.2	9.7
Nome Census Area	3,924	3,703	3,918	501	528	534	12.8	14.3	13.6
North Slope Borough	5,543	5,512	5,451	260	274	273	4.7	5.0	5.0
Northwest Arctic Borough	3,155	3,168	3,042	445	458	398	14.1	14.5	13.1
Southeast Region	44,602	44,587	44,398	2,470	2,550	2,571	5.5	5.7	5.8
Haines Borough	1,833	1,874	1,860	84	92	87	4.6	4.9	4.7
Hoonah-Angoon Census Area ²	1,482	1,522	1,467	149	166	133	10.1	10.9	9.1
Juneau, City and Borough of	19,120	19,318	18,891	876	900	966	4.6	4.7	5.1
Ketchikan Gateway Borough ²	9,570	9,580	9,560	507	530	514	5.3	5.5	5.4
Petersburg Census Area ²	1,941	1,903	-	120	141	-	6.2	7.4	-
Prince of Wales-Hyder Census Area ²	2,918	2,829	-	363	356	-	12.4	12.6	-
Prince of Wales-Outer Ketchikan Census Area ²	-	-	2,580	-	-	322	-	-	12.5
Sitka, City and Borough of	5,382	5,246	5,460	248	257	270	4.6	4.9	4.9
Skagway, Municipality of ²	854	860	842	33	24	21	3.9	2.8	2.5
Wrangell, City and Borough of ²	1,143	1,103	-	64	59	-	5.6	5.3	-
Wrangell-Petersburg Census Area ²	-	-	3,384	-	-	231	-	-	6.8
Yakutat, City and Borough of	359	352	354	26	25	27	7.2	7.1	7.6
Southwest Region	19,210	21,102	18,992	2,173	2,244	2,102	11.3	10.6	11.1
Aleutians East Borough	1,257	1,347	1,238	104	103	80	8.3	7.6	6.5
Aleutians West Census Area	2,874	2,912	2,842	172	171	143	6.0	5.9	5.0
Bethel Census Area	7,112	6,977	6,984	1,021	1,053	1,039	14.4	15.1	14.9
Bristol Bay Borough	1,816	3,109	1,793	32	32	32	1.8	1.0	1.8
Dillingham Census Area	2,373	2,731	2,355	210	214	192	8.8	7.8	8.2
Lake and Peninsula Borough	1,142	1,591	1,183	71	75	71	6.2	4.7	6.0
Wade Hampton Census Area	2,636	2,435	2,597	563	596	545	21.4	24.5	21.0

P = Preliminary. As more information becomes available, data are revised every month for the previous month and again at the end of every calendar year.

Note: The official definition of unemployment excludes anyone who has not made an active attempt to find work in the four-week period up to and including the week that includes the 12th of the reference month. Many in rural Alaska do not meet the definition because they have not conducted an active job search due to the scarcity of employment opportunities.

¹Unemployment rates that are not seasonally adjusted should not be compared with those that are.

²Because of the creation of new boroughs, this borough or census area has been changed or no longer exists. Data for the Skagway Municipality and Hoonah-Angoon Census Area (previously the Skagway-Hoonah-Angoon Census Area) became available in 2010. Data for the City and Borough of Wrangell, Petersburg Census Area, and Prince of Wales-Hyder went into effect in January 2011. Prior to January 2011, data were published for Wrangell-Petersburg Census Area and Prince of Wales-Outer Ketchikan Census Area.

Source: Alaska Department of Labor and Workforce Development, Research and Analysis Section; and U.S. Bureau of Labor Statistics