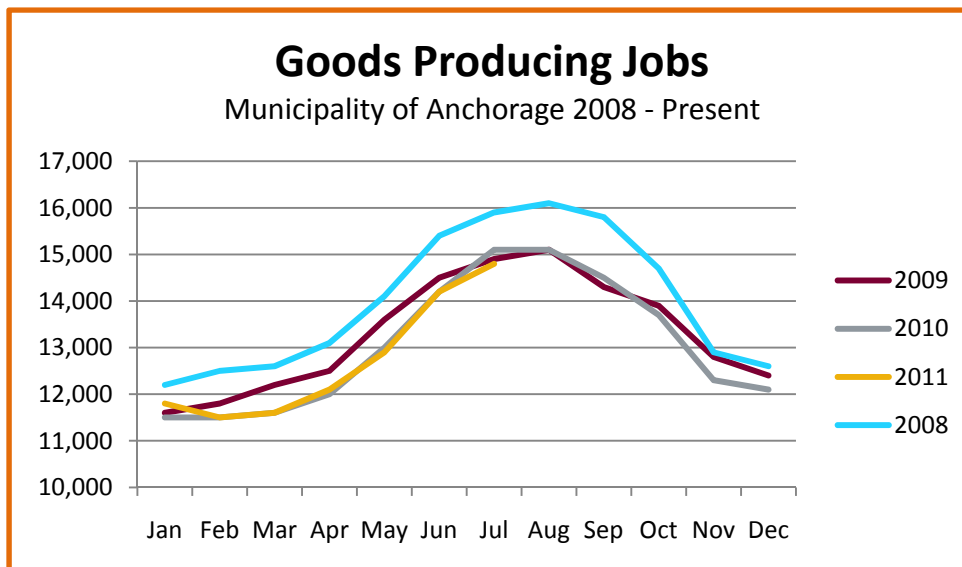
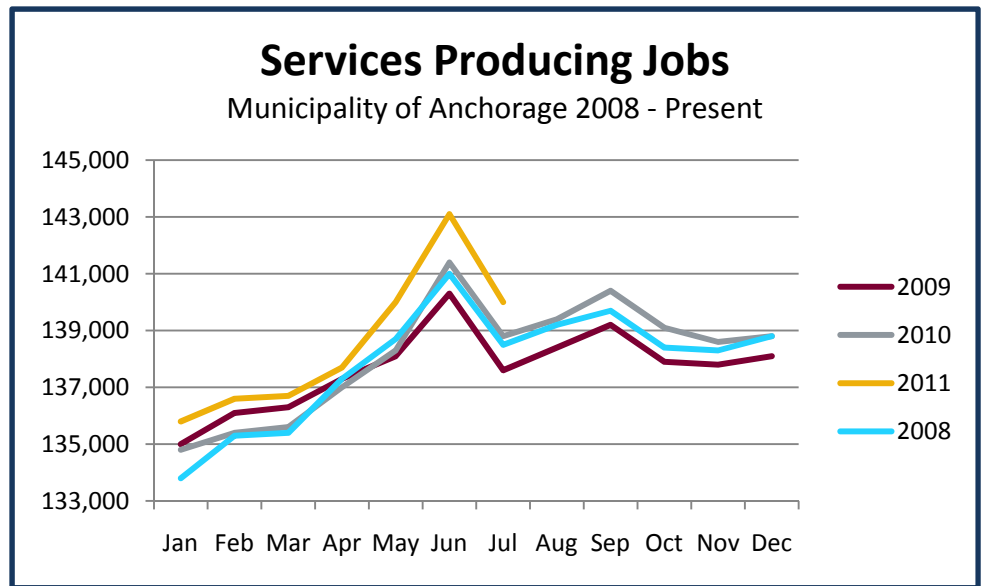


AEDC July 2011 Employment Report

Executive Summary

The unemployment rate in Anchorage is down 1.7 percentage points in June 2011 from its recent high of 7.7 percent in February 2010, settling at 6.0 percent. Overall unemployment is averaging 6.4 percent in Anchorage for the first 2 quarters of 2011, which is 0.2 percent below 2009 and a full percentage point below the 2010 year-to-date average. Monthly labor force growth in Anchorage has continued to track above 2010 levels and is currently averaging 973 more workers in 2011, compared to 2010. Job growth continues to outpace labor force growth, which really means that the Anchorage economy is growing in the face of continued national uncertainty.

Services producing jobs in Anchorage (engineering, retail, tourism, healthcare, etc.) are up 2011 over 2010 by 1,229 jobs, or 0.89 percent. The sectors seeing the most growth are professional & business services (up 329, 1.81 percent), and education and health services (up 943 jobs, 4.38 percent, with 743 of those in the healthcare sector). It is also important to note that the seasonal nature of the services industries (tourism and retail) results in an employment spike in the summertime.



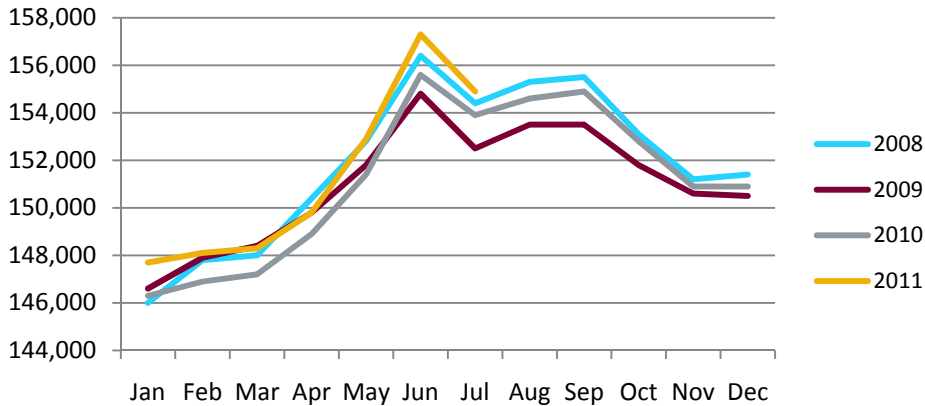
Goods producing jobs which are construction work, mining, and oil & gas production are flat. Manufacturing, interestingly enough, is showing some signs of growth (up 14 jobs, 0.74 percent).

The slow job growth in the goods producing sector is being offset by significant employment increases in the service sector. Job growth in the professional

services and health care industries has fueled the sustained decrease in Anchorage's unemployment rate in the face of a growing labor force.

Anchorage Employment

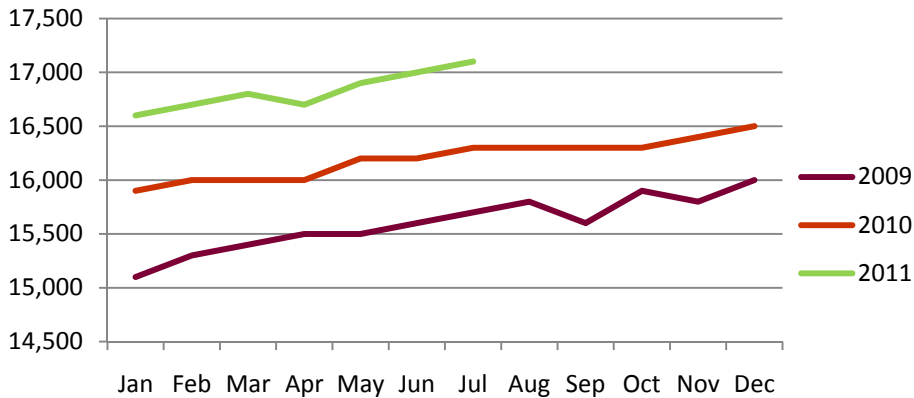
Municipality of Anchorage 2008-Present



Preliminary numbers for Anchorage's employment show an average increase of 1,257 jobs for 2011 vs. 2010, with a month-to-month (July '11 vs. July '10) comparison showing an increase of 1,000 jobs or 0.65 percent. Employment numbers are still showing overall growth over the highs of 2008.

Health Care Employment

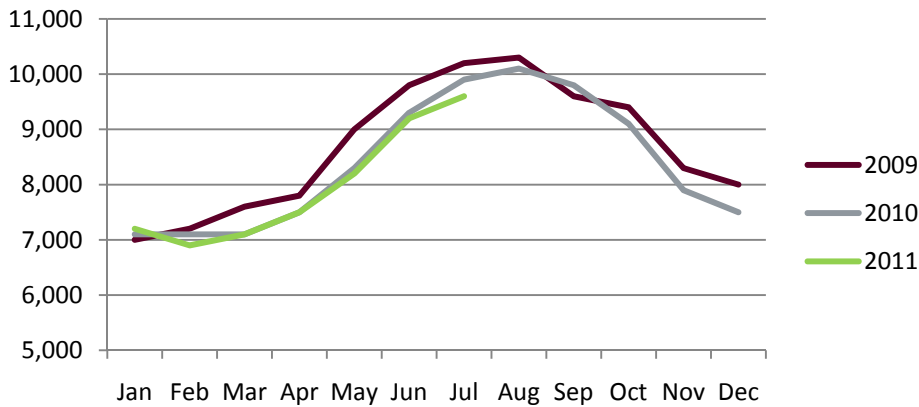
Municipality of Anchorage 2009-Present



In January Anchorage was averaging 16,600 Health Care jobs, in July Anchorage averaged 17,100 jobs. Compared to 2010 levels this is a growth of about 743 jobs, or about 4.6 percent growth. This continues to be a hot sector for growth. Recent employment figures and long-term projections lead us to believe that the growth will be sustained.

Construction Employment

Municipality of Anchorage 2009-Present

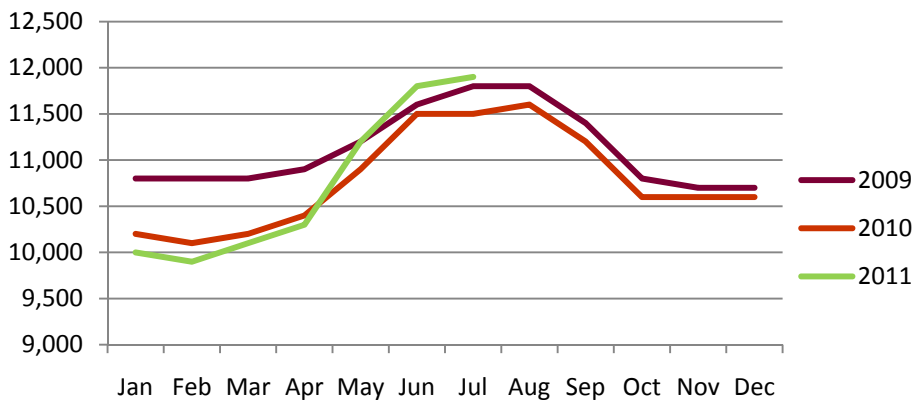


Construction is a naturally cyclical industry. On average year-to-date this sector is down 86 jobs. June to July showed an average increase of 400 jobs which puts 2011 construction employment a little behind 2010 levels.

This is interesting and a little counter-intuitive given permit applications are up about 44 percent over 2010 and Providence Hospital has two large projects in construction with their Generations expansion and their Extended Care Center. However permit application values could be the canary for future construction jobs.

Transportation Employment

Municipality of Anchorage 2009-Present



AEDC predicted a 300 job increase in transportation jobs for 2011. The year started out a little behind, but then in about May it turned around and the industry started to see growth. The year started with transportation employment around 10,000 jobs and ended July averaging 11,900 jobs. Putting it above the recent highs of 2009.

This growth could be attributed to the increase in passenger aircraft landing in Anchorage (JetBlue and Edelweiss) and the increased tonnage transiting through Ted Stevens Anchorage International Airport.



Unemployment Analysis (Year-To-Date, 2011)

• Anchorage • Mat-Su Borough • Kenai Peninsula Borough •

	Jan	Feb	Mar	Apr	May	Jun	Jul	Aug	Sep	Oct	Nov	Dec	11 YTD Avg	10 YTD Avg	11 vs 10
Municipality of Anchorage	revised	revised	revised	revised	revised	revised	preliminary								
Labor Force	156,242	155,238	155,438	154,487	154,375	156,771	155,206						155,394	154,421	973
Employment	145,940	145,163	145,353	144,900	144,887	146,288	145,827						145,480	143,093	2,387
Unemployment	10,302	10,075	10,085	9,587	9,488	10,483	9,379						9,914	11,328	(1,414)
Unemployment Rate	6.6%	6.5%	6.5%	6.2%	6.1%	6.7%	6.0%						6.4%	7.3%	-1.0%
Mat-Su Borough															
Labor Force	43,892	43,546	43,527	42,882	42,597	43,242	42,707						43,199	42,919	280
Employment	39,289	39,080	39,131	39,009	39,005	39,383	39,258						39,165	38,522	643
Unemployment	4,603	4,466	4,396	3,873	3,592	3,859	3,449						4,034	4,396	(362)
Unemployment Rate	10.5%	10.3%	10.1%	9.0%	8.4%	8.9%	8.1%						9.3%	10.2%	-0.9%
Kenai Peninsula Borough															
Labor Force	26,172	26,206	26,481	26,584	28,026	29,611	29,534						27,516	26,688	828
Employment	23,108	23,220	23,581	23,970	25,623	27,025	27,230						24,822	23,608	1,214
Unemployment	3,064	2,986	2,900	2,614	2,403	2,586	2,304						2,694	3,080	(386)
Unemployment Rate	11.7%	11.4%	11.0%	9.8%	8.6%	8.7%	7.8%						9.8%	11.5%	-1.8%
Southcentral Region															
Labor Force	226,306	224,990	225,446	223,953	224,998	229,624	227,447	-	-	-	-	-	226,109	224,028	2,081
Employment	208,337	207,463	208,065	207,879	209,515	212,696	212,315	-	-	-	-	-	209,467	205,223	4,244
Unemployment	17,969	17,527	17,381	16,074	15,483	16,928	15,132	-	-	-	-	-	16,642	18,805	(2,163)
Unemployment Rate	7.9%	7.8%	7.7%	7.2%	6.9%	7.4%	6.7%						7.4%	8.4%	-1.0%
State of Alaska															
Labor Force	359,660	360,092	360,689	358,461	364,046	372,587	375,399						364,419	358,468	5,951
Employment	328,621	329,908	330,979	330,936	337,353	343,592	349,481						335,839	326,921	8,918
Unemployment	31,039	30,184	29,710	27,525	26,693	28,995	25,918						28,581	31,548	(2,967)
Unemployment Rate	8.6%	8.4%	8.2%	7.7%	7.3%	7.8%	6.9%						7.8%	8.8%	-1.0%

***Note:** These numbers reflect employment, unemployment, etc. for only those people that are residence of the specified City/Region, thus are not inclusive of people who commute to another city for their jobs. (Ex: Someone lives in Wasilla but works in Anchorage. They would be counted in the Mat-Su Borough's labor force and employment numbers, not the Municipality of Anchorage numbers)



Industry Employment Estimates 2011 Municipality of Anchorage

Industry	Jan	Feb	Mar	Apr	May	Jun	Jul	Aug	Sep	Oct	Nov	Dec	2011 YTD Avg.	2010 YTD Avg.	2011 vs 2010 Monthly Avg	% Change
	revised	revised	revised	revised	revised	revised	preliminary									
Total Nonfarm	147,700	148,100	148,300	149,800	152,900	157,300	154,900	-	-	-	-	-	151,286	150,029	1,257	0.84%
Goods Producing	11,800	11,500	11,600	12,100	12,900	14,200	14,800	-	-	-	-	-	12,700	12,700	0	0.00%
Services Providing	135,800	136,600	136,700	137,700	140,000	143,100	140,000	-	-	-	-	-	138,557	137,329	1,229	0.89%
Mining and Logging ²	2,800	2,700	2,800	2,800	2,800	3,000	3,000	-	-	-	-	-	2,843	2,743	100	3.65%
Mining	2,700	2,700	2,700	2,700	2,800	3,000	3,000	-	-	-	-	-	2,800	2,743	57	2.08%
Oil & Gas	2,500	2,500	2,500	2,600	2,600	2,800	2,700	-	-	-	-	-	2,600	2,614	-14	-0.55%
Construction	7,200	6,900	7,100	7,500	8,200	9,200	9,600	-	-	-	-	-	7,957	8,043	-86	-1.07%
Manufacturing	1,900	1,900	1,800	1,800	1,900	2,000	2,300	-	-	-	-	-	1,943	1,929	14	0.74%
Trade/Transportation/Utilities	31,000	30,600	31,000	31,500	32,800	33,700	34,100	-	-	-	-	-	32,100	32,186	-86	-0.27%
Wholesale Trade	4,300	4,300	4,400	4,400	4,600	4,800	4,800	-	-	-	-	-	4,514	4,543	-29	-0.63%
Retail Trade	16,700	16,400	16,600	16,800	16,900	17,200	17,400	-	-	-	-	-	16,857	16,943	-86	-0.51%
Trans/Warehouse/Utilities	10,000	9,900	10,100	10,300	11,200	11,800	11,900	-	-	-	-	-	10,743	10,686	57	0.53%
Air Transportation	2,800	2,700	2,800	2,800	3,000	3,100	3,100	-	-	-	-	-	2,900	2,857	43	1.50%
Information	4,000	4,000	4,000	4,000	4,000	4,000	4,000	-	-	-	-	-	4,000	4,057	-57	-1.41%
Financial Activities	8,800	8,800	8,700	8,900	9,000	9,200	9,300	-	-	-	-	-	8,957	8,886	71	0.80%
Professional & Business Svcs	17,800	18,100	18,200	18,100	18,700	19,300	19,300	-	-	-	-	-	18,500	18,171	329	1.81%
Educational & Health Services	22,200	22,300	22,300	22,300	22,700	22,800	22,800	-	-	-	-	-	22,486	21,543	943	4.38%
Health Care	16,600	16,700	16,800	16,700	16,900	17,000	17,100	-	-	-	-	-	16,829	16,086	743	4.62%
Leisure & Hospitality	15,100	15,400	15,500	15,600	16,200	16,700	16,900	-	-	-	-	-	15,914	15,557	357	2.30%
Accommodation	3,100	3,100	3,100	3,100	3,200	3,600	3,600	-	-	-	-	-	3,257	3,200	57	1.79%
Food Svcs & Drinking Places	10,000	10,200	10,400	10,600	11,000	11,200	11,600	-	-	-	-	-	10,714	10,386	329	3.16%
Other Services	5,500	5,500	5,400	5,600	5,800	5,900	5,900	-	-	-	-	-	5,657	5,614	43	0.76%
Government	31,500	31,900	31,400	31,800	30,900	31,400	27,700	-	-	-	-	-	30,943	31,300	-357	-1.14%
Federal Government	9,500	9,500	9,500	9,400	9,500	9,700	9,700	-	-	-	-	-	9,543	9,814	-271	-2.77%
State Government	10,500	10,800	10,800	10,800	10,200	10,500	10,100	-	-	-	-	-	10,529	10,457	71	0.68%
State Education	2,600	2,900	2,900	2,900	2,000	2,000	1,900	-	-	-	-	-	2,457	2,400	57	2.38%
Local Government	11,400	11,600	11,200	11,600	11,200	11,200	7,900	-	-	-	-	-	10,871	10,986	-114	-1.04%
Local Education	8,400	8,600	8,300	8,700	8,300	8,300	4,900	-	-	-	-	-	7,929	8,029	-100	-1.25%
Tribal Government ¹	-	-	-	-	-	-	-	-	-	-	-	-	-	-	-	-

- Nonfarm Wage & Salary excludes self-employed workers, fishers, domestics, and unpaid family workers.

- Government includes employees of public school systems and the University of Alaska.

- Beginning January 2001, wage and salary employment estimates were published under a new classification system. The Standard Industrial Classification system (SIC) has been replaced by the North American Industry Classification System (NAICS). Data prior to 2001 are comparable only at the Total Nonfarm and Government levels.

^{1/} As of January 2001, certain federally-recognized tribal entities were moved to Local Government, which created a series break for Total Government and Local Government. Please see the April 2002 Alaska Economic Trends publication for a detailed explanation.

^{2/} This category was called "Natural Resources and Mining" in previous years. The change is in name only; the industries it includes remain the same.

- Source: Alaska Department of Labor and Workforce Development, Research and Analysis Section

Quick Comparisons		
11 vs 10 July	1,000	0.65%
11 vs 10 1st Qtr	1,233	0.84%
11 vs 10 2nd Qtr YTD	1,367	0.90%
11 vs 10 3rd Qtr.	1,000	0.65%
11 vs 10 4th Qtr.	N/A	N/A

* **Note:** The above numbers are representative of all people employed in the Municipality of Anchorage, this is inclusive of workers who claim residence outside of the Municipality of Anchorage. (Ex: someone who lives in the Mat-Su, but works in Anchorage would be included in these number)



Industry Employment Estimates 2011 State of Alaska

Industry	Jan	Feb	Mar	Apr	May	Jun	Jul	Aug	Sep	Oct	Nov	Dec	2011 YTD Avg.	2010 YTD Avg.	2011 vs 2010 Monthly Avg	% Change
	revised	revised	revised	revised	revised	revised	preliminary									
Total Nonfarm	310,500	315,500	317,400	321,400	328,500	349,500	355,100	-	-	-	-	-	328,271	321,500	6,771	2.11%
Goods Producing	38,600	40,100	41,000	40,300	41,700	53,000	61,500	-	-	-	-	-	45,171	43,657	1,514	3.47%
Services Providing	271,900	275,400	276,400	281,100	286,800	296,500	293,600	-	-	-	-	-	283,100	277,843	5,257	1.89%
Mining and Logging ²	15,100	15,400	15,700	16,000	16,300	17,000	17,400	-	-	-	-	-	16,129	15,029	1,100	7.32%
Mining	14,900	15,200	15,400	15,600	15,800	16,500	16,700	-	-	-	-	-	15,729	14,771	957	6.48%
Oil & Gas	13,000	12,900	12,900	13,100	13,200	13,500	13,600	-	-	-	-	-	13,171	12,471	700	5.61%
Construction	12,300	12,200	12,800	14,500	16,200	18,900	19,100	-	-	-	-	-	15,143	15,300	-157	-1.03%
Manufacturing	11,200	12,500	12,500	9,800	9,200	17,100	25,000	-	-	-	-	-	13,900	13,329	571	4.29%
Seafood Processing	7,500	8,700	9,000	6,400	5,600	10,800	17,700	-	9,386	-	-	-	9,386	9,771	-386	-3.95%
Trade/Transportation/Utilities	60,600	60,400	60,900	62,700	65,900	68,100	69,300	-	-	-	-	-	63,986	62,171	1,814	2.92%
Wholesale Trade	5,900	5,900	6,000	6,000	6,200	6,500	6,700	-	-	-	-	-	6,171	6,200	-29	-0.46%
Retail Trade	34,200	33,800	33,900	35,100	36,500	37,600	37,900	-	-	-	-	-	35,571	35,157	414	1.18%
Food & Beverage Stores	5,900	6,000	5,900	6,100	6,300	6,500	6,600	-	-	-	-	-	6,186	6,257	-71	-1.14%
General Merchandise Stores	9,800	9,800	9,700	10,000	10,000	10,400	10,300	-	-	-	-	-	10,000	9,914	86	0.86%
Trans/Warehouse/Utilities	20,500	20,700	21,000	21,600	23,200	24,000	24,700	-	-	-	-	-	22,243	20,814	1,429	6.86%
Air Transportation	5,100	5,300	5,500	5,600	6,000	6,300	6,400	-	-	-	-	-	5,743	5,586	157	2.81%
Truck Transportation	3,000	3,200	3,300	3,300	3,300	3,600	3,700	-	-	-	-	-	3,343	3,086	257	8.33%
Information	6,300	6,400	6,400	6,400	6,500	6,500	6,600	-	6,443	-	-	-	6,443	6,329	114	1.81%
Telecommunications	4,200	4,200	4,200	4,300	4,300	4,400	4,500	-	-	-	-	-	4,300	4,143	157	3.79%
Financial Activities	15,000	15,000	15,100	15,100	14,900	14,900	15,000	-	-	-	-	-	15,000	14,771	229	1.55%
Professional & Business Svcs	24,800	25,500	25,400	26,100	26,600	28,000	28,300	-	-	-	-	-	26,386	25,957	429	1.65%
Educational & Health Services	42,800	43,200	43,200	43,100	43,200	43,100	42,400	-	-	-	-	-	43,000	41,400	1,600	3.86%
Health Care	30,900	31,000	31,200	31,500	31,600	31,800	31,700	-	31,386	-	-	-	31,386	29,771	1,614	5.42%
Leisure & Hospitality	27,600	28,500	29,400	30,300	34,200	39,100	41,300	-	-	-	-	-	32,914	30,986	1,929	6.22%
Accommodation	6,300	6,300	6,300	6,000	7,100	8,100	8,300	-	-	-	-	-	6,914	7,614	-700	-9.19%
Food Svcs & Drinking Places	17,400	18,700	19,100	19,700	21,700	23,400	24,500	-	-	-	-	-	20,643	19,000	1,643	8.65%
Other Services	11,400	11,300	11,300	11,600	11,700	12,100	11,600	-	11,571	-	-	-	11,571	11,343	229	2.02%
Government	83,400	85,100	84,700	85,800	83,800	84,700	79,100	-	-	-	-	-	83,800	84,886	-1,086	-1.28%
Federal Government	16,200	16,400	16,600	16,700	17,300	17,700	17,800	-	-	-	-	-	16,957	17,700	-743	-4.20%
State Government	25,200	26,300	26,400	26,700	25,300	25,700	24,900	-	-	-	-	-	25,786	25,743	43	0.17%
State Education	7,500	8,600	8,600	8,600	7,000	6,400	6,000	-	-	-	-	-	7,529	7,500	29	0.38%
Local Government	42,000	42,400	41,700	42,400	41,200	41,300	36,400	-	41,057	-	-	-	41,057	41,443	-386	-0.93%
Local Education	24,700	25,400	24,800	25,500	23,900	23,100	17,800	-	-	-	-	-	23,600	23,700	-100	-0.42%
Tribal Government ¹	3,500	3,500	3,700	3,700	3,800	3,900	3,900	-	-	-	-	-	3,714	3,714	0	0.00%

- Nonfarm Wage & Salary excludes self-employed workers, fishers, domestics, and unpaid family workers.

- Government includes employees of public school systems and the University of Alaska.

- Beginning January 2001, wage and salary employment estimates were published under a new classification system. The Standard Industrial Classification system (SIC) has been replaced by the North American Industry Classification System (NAICS). Data prior to 2001 are comparable only at the Total Nonfarm and Government levels.

^{1/} As of January 2001, certain federally-recognized tribal entities were moved to Local Government, which created a series break for Total Government and Local Government. [Please see the April 2002 Alaska Economic Trends publication for a detailed explanation.](#)

^{2/} This category was called "Natural Resources and Mining" in previous years. The change is in name only; the industries it includes remain the same.

- Source: Alaska Department of Labor and Workforce Development, Research and Analysis Section

Quick Comparisons

11 vs 10 July	6,900	1.98%
11 vs 10		
1st Qtr	7,933	2.59%
11 vs 10		
2nd Qtr YTD	5,567	1.70%
11 vs 10 3rd Qtr.	6,900	1.98%
11 vs 10		
4th Qtr		0.00%

Click Bishop
Commissioner

P.O. Box 111149
Juneau, AK 99811-1149
www.labor.alaska.gov



Beth Leschper
Communications Director

907.465.2700
cell: 907.723.1321
beth.leschper@alaska.gov

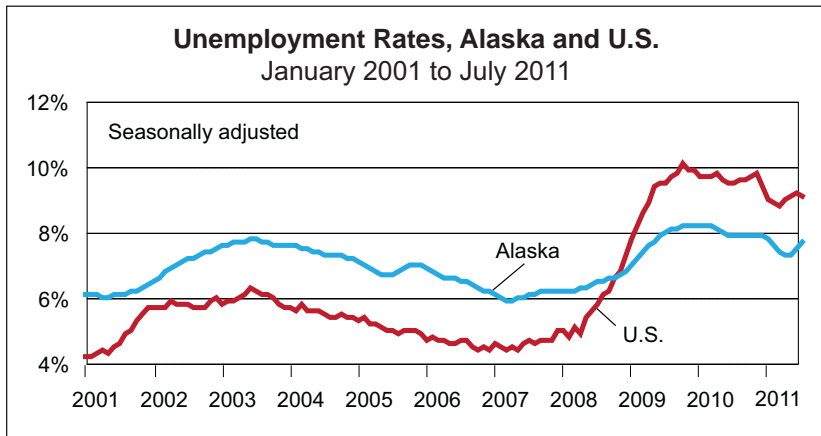
Press Release

COMMISSIONER'S OFFICE

August 19, 2011

No. 11-44

Unemployment rate at 7.7 percent in July



Alaska's seasonally adjusted unemployment rate for July was 7.7 percent, up slightly from June's revised rate of 7.5 percent. The comparable national rate was 9.1 percent.

The unemployment rates for Alaska and the nation are both lower than they were a year ago, but neither rate has changed much during 2011. The state's jobless rate is still above its 10-year average of 7.1 percent, although it remains considerably healthier than the national rate.

The contrast between Alaska and the nation is even more pronounced in terms of jobs. Although employment in the nation began to recover in 2010 and has continued to improve modestly this year, the July employment number of 130.9 million puts the nation at 2004's level — that means the U.S. has a long way to go in making up those job losses.

In Alaska, 2011 represents an all-time high, with July employment at 355,100. Employment in Alaska has grown every year since 1988, with one exception: 2009, the tail end of the national recession. Employment declined by a four-tenths of a percent that year, but Alaska made up those small losses promptly in 2010 — then surpassed them.

The not seasonally adjusted jobless rates fell in every region in the state in July, as July is probably the top month for economic and labor force activity in Alaska. Construction, seafood processing, and the visitor industry hit or approach their peak this time of year. Six areas' rates were below 5 percent; the lowest was Bristol Bay at 1.1 percent. Eight areas had double-digit unemployment rates, with Wade Hampton Census Area the highest at 24.6 percent. Wade Hampton's unemployment rate has topped 20 percent in five of the past 10 years.

Alaska Nonfarm Payroll Employment¹

	Preliminary 7/11	Revised 6/11	Revised 7/10	Year-over-year change		
				7/10	90% confidence interval ²	
Total Nonfarm Employment ³	355,100	349,500	348,200	6,900	-483	14,283
Mining and Logging	17,400	17,000	16,400	1,000	207	1,793
Oil and Gas	13,600	13,500	13,300	300	-	-
Construction	19,100	18,900	19,600	-500	-3,083	2,083
Manufacturing	25,000	17,100	22,600	2,400	1,406	3,394
Seafood Processing	17,700	10,800	18,800	-1,100	-	-
Trade, Transportation, and Utilities	69,300	68,100	67,400	1,900	-472	4,272
Retail Trade	37,900	37,600	37,200	700	-1,328	2,728
Information	6,600	6,500	6,500	100	-481	681
Financial Activities	15,000	14,900	15,400	-400	-2,343	1,543
Professional and Business Services	28,300	28,000	27,600	700	-1,093	2,493
Educational ⁴ and Health Services	42,400	43,100	41,800	600	-668	1,868
Health Care	31,700	31,800	30,300	1,400	-	-
Leisure and Hospitality	41,300	39,100	38,100	3,200	1,163	5,237
Accommodations	8,300	8,100	10,900	-2,600	-	-
Food Svcs. and Drinking Places	24,500	23,400	21,700	2,800	-	-
Other Services	11,600	12,100	11,900	-300	-3,476	2,876
Government ⁵	79,100	84,700	80,900	-1,800	-	-

Notes: A dash indicates that confidence intervals are not available at this level of detail.

¹Not seasonally adjusted

²Based on the margin of error of the estimate, a 90 percent confidence interval statistically determines a range of values within which the "true" value falls with a 90 percent level of confidence. For more information, go to <http://labor.alaska.gov/research/c-i.pdf>.

³Excludes the self-employed, fishermen and other agricultural workers, and private household workers

⁴Private education only

⁵Includes public schools, the University of Alaska, and federally recognized tribal entities

Unemployment Rates, Seasonally Adjusted

	7/11	6/11	7/10
Alaska	7.7%	7.5%	7.9%
U.S.	9.1%	9.2%	9.5%

Sources for graph and tables: Alaska Department of Labor and Workforce Development, Research and Analysis Section; and U.S. Bureau of Labor Statistics

Beginning with the production of preliminary estimates for March 2011, production of state and metropolitan area Current Employment Statistics estimates has transitioned from the Department of Labor and Workforce Development's Research and Analysis Section to the U.S. Bureau of Labor Statistics. Concurrent with this transition, the BLS implemented several changes to the methods to help standardize estimation across states. While these changes reduce the potential for statistical bias in state and metropolitan area estimates, they may increase month-to-month variability. More detailed information on the CES changes is available on the BLS Web site at <http://www.bls.gov/sae/cesprocs.htm>.

Contact: Neal Fried, Economist (907) 269-4861
Research and Analysis Web site: <http://laborstats.alaska.gov>

Labor Force by Borough and Census Area, Not Seasonally Adjusted¹

	Civilian Labor Force			Unemployed					
	7/11 ^P	6/11	7/10	Number			Rate		
	7/11 ^P	6/11	7/10	7/11 ^P	6/11	7/10	7/11 ^P	6/11	7/10
Alaska Statewide	375,399	372,587	369,062	25,918	28,995	25,843	6.9	7.8	7.0
Anchorage/Mat-Su Region	197,913	200,013	193,017	12,828	14,342	13,179	6.5	7.2	6.8
Municipality of Anchorage	155,206	156,771	151,601	9,379	10,483	9,908	6.0	6.7	6.5
Matanuska-Susitna Borough	42,707	43,242	41,416	3,449	3,859	3,271	8.1	8.9	7.9
Gulf Coast Region	42,835	42,434	42,589	3,150	3,532	3,069	7.4	8.3	7.2
Kenai Peninsula Borough	29,534	29,611	29,380	2,304	2,586	2,281	7.8	8.7	7.8
Kodiak Island Borough	7,197	6,827	7,102	463	504	432	6.4	7.4	6.1
Valdez-Cordova Census Area	6,104	5,996	6,107	383	442	356	6.3	7.4	5.8
Interior Region	56,264	56,433	55,348	3,829	4,278	3,672	6.8	7.6	6.6
Denali Borough	2,288	2,314	2,380	93	102	85	4.1	4.4	3.6
Fairbanks North Star Borough	47,992	47,469	46,703	2,932	3,313	2,895	6.1	7.0	6.2
Southeast Fairbanks Census Area	3,392	3,558	3,577	344	369	310	10.1	10.4	8.7
Yukon-Koyukuk Census Area	2,592	3,092	2,688	460	494	382	17.7	16.0	14.2
Northern Region	12,435	12,537	12,265	1,272	1,366	1,217	10.2	10.9	9.9
Nome Census Area	3,712	4,005	3,745	533	580	553	14.4	14.5	14.8
North Slope Borough	5,529	5,426	5,439	276	279	272	5.0	5.1	5.0
Northwest Arctic Borough	3,194	3,106	3,081	463	507	392	14.5	16.3	12.7
Southeast Region	44,651	41,844	44,681	2,573	2,926	2,581	5.8	7.0	5.8
Haines Borough	1,870	1,499	1,926	93	101	89	5.0	6.7	4.6
Hoonah-Angoon Census Area ²	1,526	1,462	1,514	168	192	142	11.0	13.1	9.4
Juneau, City and Borough of	19,341	18,795	19,178	908	1,022	955	4.7	5.4	5.0
Ketchikan Gateway Borough ²	9,598	8,922	9,640	535	619	520	5.6	6.9	5.4
Petersburg Census Area ²	1,907	1,726	-	142	155	-	7.4	9.0	-
Prince of Wales-Hyder Census Area ²	2,836	2,611	-	359	406	-	12.7	15.5	-
Prince of Wales-Outer Ketchikan Census Area ²	-	-	2,597	-	-	330	-	-	12.7
Sitka, City and Borough of	5,255	4,689	5,364	259	300	270	4.9	6.4	5.0
Skagway, Municipality of ²	861	807	863	24	25	17	2.8	3.1	2.0
Wrangell, City and Borough of ²	1,105	1,008	-	60	77	-	5.4	7.6	-
Wrangell-Petersburg Census Area ²	-	-	3,251	-	-	231	-	-	7.1
Yakutat, City and Borough of	352	325	348	25	29	27	7.1	8.9	7.8
Southwest Region	21,300	19,327	21,166	2,265	2,551	2,127	10.6	13.2	10.0
Aleutians East Borough	1,359	1,075	1,343	104	119	82	7.7	11.1	6.1
Aleutians West Census Area	3,081	2,867	2,940	173	212	160	5.6	7.4	5.4
Bethel Census Area	6,965	7,145	6,960	1,063	1,199	1,046	15.3	16.8	15.0
Bristol Bay Borough	3,095	1,896	3,113	33	37	30	1.1	2.0	1.0
Dillingham Census Area	2,680	2,247	2,742	216	247	189	8.1	11.0	6.9
Lake and Peninsula Borough	1,680	1,310	1,667	75	86	72	4.5	6.6	4.3
Wade Hampton Census Area	2,440	2,787	2,401	601	651	548	24.6	23.4	22.8

P = Preliminary. As more information becomes available, data are revised every month for the previous month and again at the end of every calendar year.

Note: The official definition of unemployment excludes anyone who has not made an active attempt to find work in the four-week period up to and including the week that includes the 12th of the reference month. Many in rural Alaska do not meet the definition because they have not conducted an active job search due to the scarcity of employment opportunities.

¹Unemployment rates that are not seasonally adjusted should not be compared with those that are.

²Because of the creation of new boroughs, this borough or census area has been changed or no longer exists. Data for the Skagway Municipality and Hoonah-Angoon Census Area (previously the Skagway-Hoonah-Angoon Census Area) became available in 2010. Data for the City and Borough of Wrangell, Petersburg Census Area, and Prince of Wales-Hyder went into effect in January 2011. Prior to January 2011, data were published for Wrangell-Petersburg Census Area and Prince of Wales-Outer Ketchikan Census Area.

Source: Alaska Department of Labor and Workforce Development, Research and Analysis Section; and U.S. Bureau of Labor Statistics