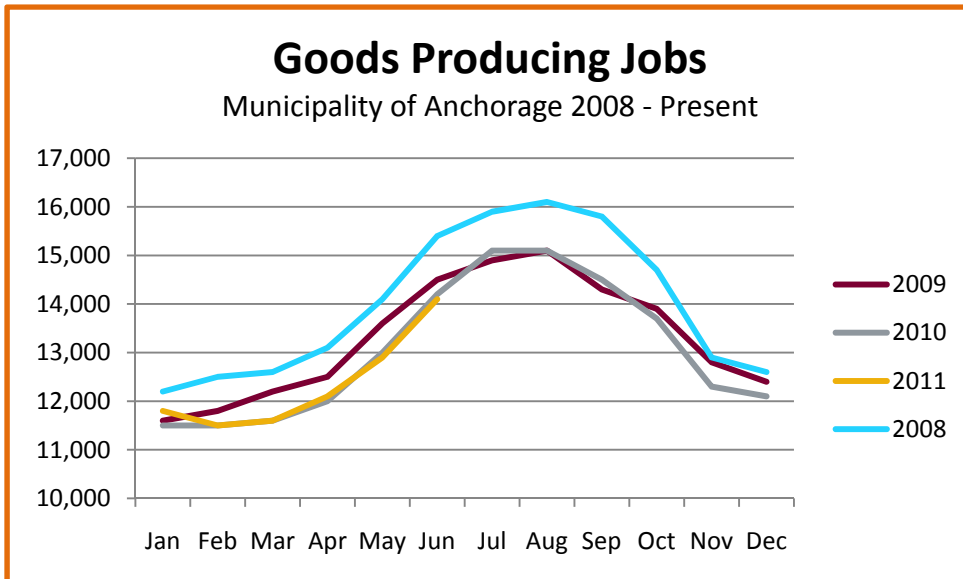
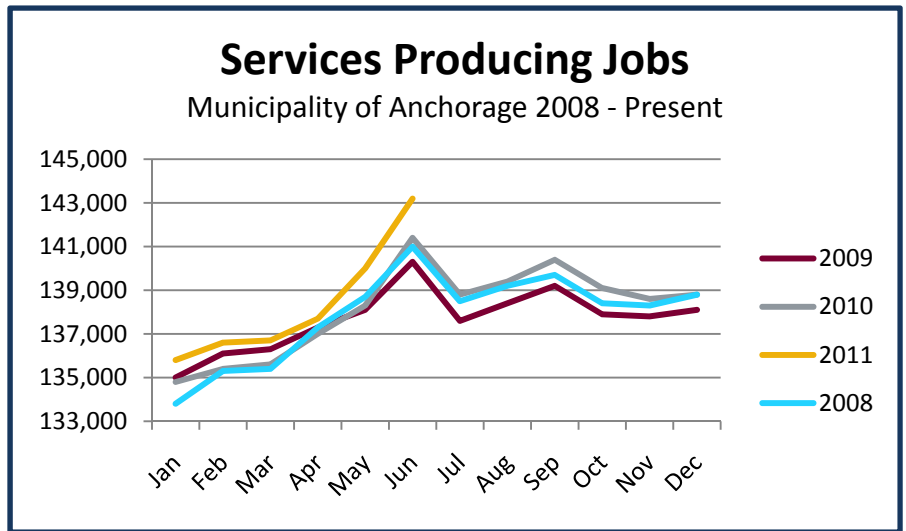


# AEDC June 2011 Employment Report

## Executive Summary

The unemployment rate in Anchorage is down 1.0 percentage points in June 2011 from its recent high of 7.7 percent in February 2010, settling at 6.7 percent. Overall unemployment is averaging 6.4 percent in Anchorage for the first 2 quarters of 2011, which is 0.3 percent below 2009 and almost a full percentage point below the 2010 year-to-date average. Monthly labor force growth in Anchorage has continued to track above 2010 levels and is currently averaging 1,019 more workers in 2011, compared to 2010. Job growth continues to outpace labor force growth, which really means that the Anchorage economy is growing in the face of continued national uncertainty.

Services producing jobs in Anchorage (engineering, retail, tourism, healthcare, etc.) are up 2011 over 2010 by 1,250 jobs, or 0.91 percent. The sectors seeing the most growth are professional & business services (up 365, 1.92 percent), and education and health services (up 950 jobs, 4.42 percent, with 750 of those in the healthcare sector). It is also important to note that the seasonal nature of the services industries (tourism and retail) results in an employment spike in the summertime.



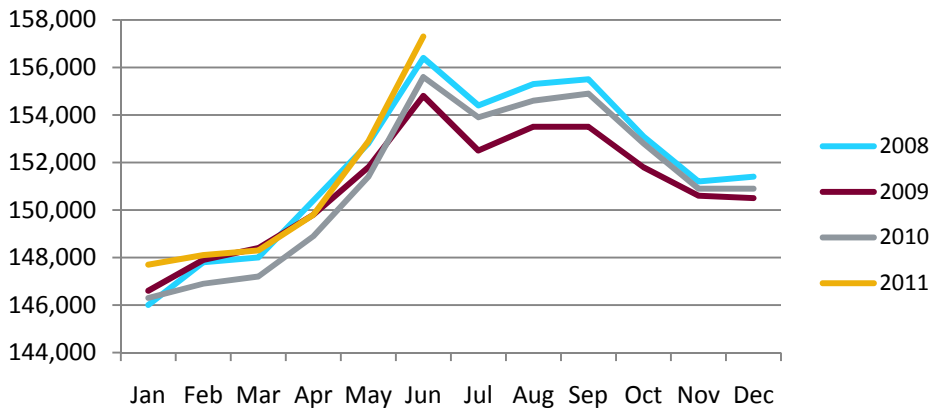
Goods producing jobs which are construction work, mining, and oil & gas production are up a modest 33 jobs, or 0.27 percent. Manufacturing, interestingly enough, is showing some signs of growth

The slow job growth in the goods producing sector is being offset by significant employment increases in the service sector. Job growth in the professional services and health care industries has fueled the sustained

decrease in Anchorage's unemployment rate in the face of a growing labor force.

## Anchorage Employment

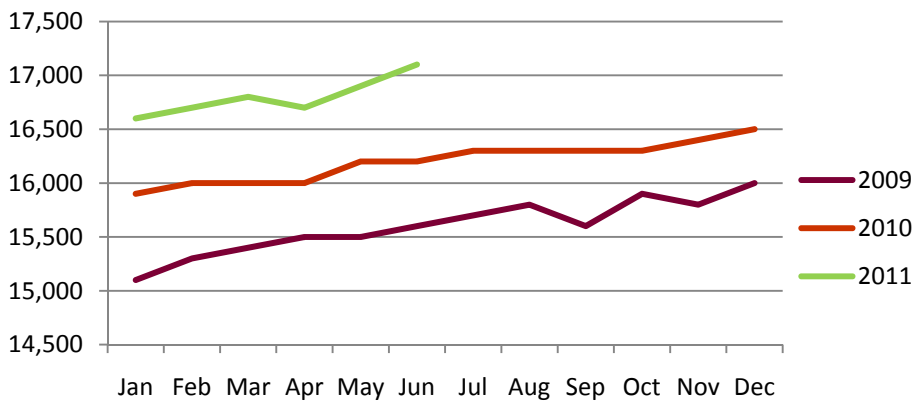
Municipality of Anchorage 2008-Present



Preliminary numbers for Anchorage's employment show an average increase of 1,300 jobs for 2011 vs. 2010, with a month-to-month (June 11 vs. June 10) comparison showing an increase of 1,700 jobs or 1.12 percent. Employment numbers are still showing overall growth over the highs of 2008.

## Health Care Employment

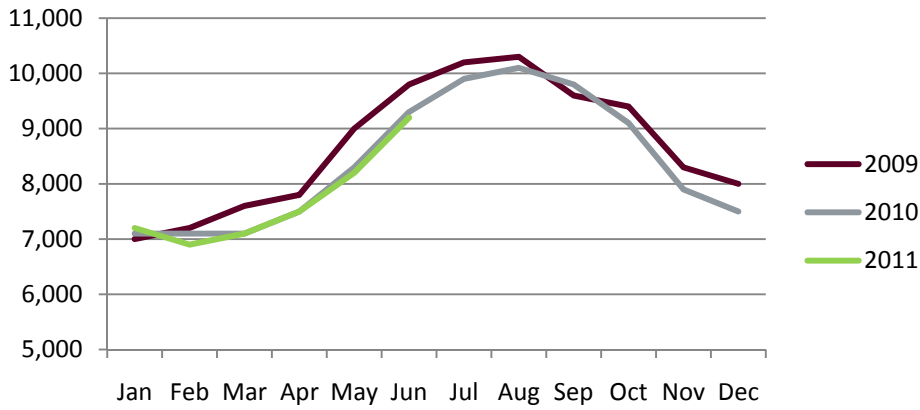
Municipality of Anchorage 2009-Present



In January Anchorage was averaging 16,600 Health Care jobs, in June Anchorage averaged 17,100 jobs. Compared to 2010 levels this is a growth of about 750 jobs, or about 4.6 percent growth. This continues to be a hot sector for growth. Recent employment figures and long-term projections lead us to believe that the growth will be sustained.

## Construction Employment

Municipality of Anchorage 2009-Present

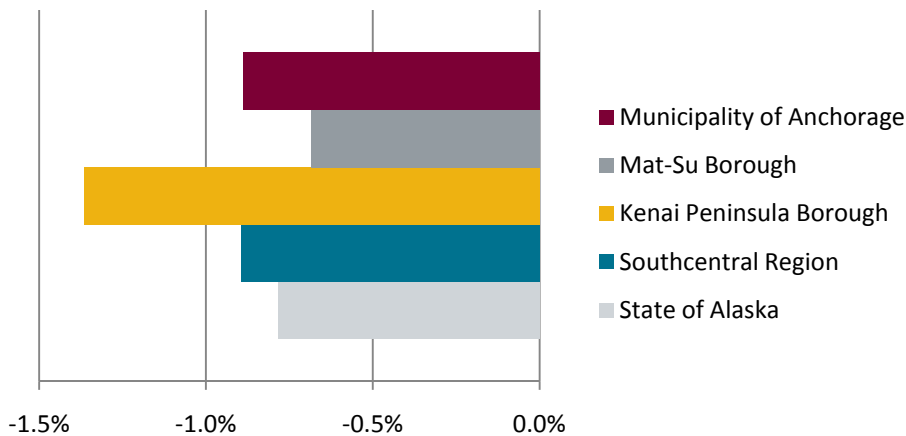


Construction is a naturally cyclical industry. On average year-to-date this sector is down only 50 jobs. May to June showed an average increase of 1,000 jobs which puts 2011 construction employment on track with 2010 levels.

Furthermore, permit application values for larger projects are picking up. We are expecting overall growth over 2010 numbers in this sector.

## Unemployment Rates

YTD 2011 vs 2010 Average



Year-to-date 2011 vs. 2010 average unemployment rates are down for the state overall 0.8 percent. Southcentral saw a 0.9 percent decrease in their YTD average unemployment rates, with Anchorage seeing a decrease of almost a full percentage point (0.9%).

This is great news for Anchorage, where the labor force has grown by an average of 1,019 workers YTD.





## Unemployment Analysis (Year-To-Date, 2011)

• Anchorage • Mat-Su Borough • Kenai Peninsula Borough •

	Jan	Feb	Mar	Apr	May	Jun	Jul	Aug	Sep	Oct	Nov	Dec	11 YTD Avg	10 YTD Avg	11 vs 10
	revised	revised	revised	revised	revised	preliminary									
<b>Municipality of Anchorage</b>															
Labor Force	156,242	155,238	155,438	154,487	154,375	156,860							155,440	154,421	1,019
Employment	145,940	145,163	145,353	144,900	144,887	146,272							145,419	143,093	2,327
Unemployment	10,302	10,075	10,085	9,587	9,488	10,588							10,021	11,328	(1,307)
Unemployment Rate	6.6%	6.5%	6.5%	6.2%	6.1%	6.7%							6.4%	7.3%	-0.9%
<b>Mat-Su Borough</b>															
Labor Force	43,892	43,546	43,527	42,882	42,597	43,274							43,286	42,919	368
Employment	39,289	39,080	39,131	39,009	39,005	39,378							39,149	38,522	626
Unemployment	4,603	4,466	4,396	3,873	3,592	3,896							4,138	4,396	(259)
Unemployment Rate	10.5%	10.3%	10.1%	9.0%	8.4%	9.0%							9.6%	10.2%	-0.7%
<b>Kenai Peninsula Borough</b>															
Labor Force	26,172	26,206	26,481	26,584	28,026	29,464							27,156	26,688	467
Employment	23,108	23,220	23,581	23,970	25,623	26,852							24,392	23,608	784
Unemployment	3,064	2,986	2,900	2,614	2,403	2,612							2,763	3,080	(317)
Unemployment Rate	11.7%	11.4%	11.0%	9.8%	8.6%	8.9%							10.2%	11.5%	-1.4%
<b>Southcentral Region</b>															
Labor Force	226,306	224,990	225,446	223,953	224,998	229,598	-	-	-	-	-	-	225,139	224,028	1,111
Employment	208,337	207,463	208,065	207,879	209,515	212,502	-	-	-	-	-	-	208,252	205,223	3,028
Unemployment	17,969	17,527	17,381	16,074	15,483	17,096	-	-	-	-	-	-	16,887	18,805	(1,918)
Unemployment Rate	7.9%	7.8%	7.7%	7.2%	6.9%	7.4%							7.5%	8.4%	-0.9%
<b>State of Alaska</b>															
Labor Force	359,660	360,092	360,689	358,461	364,046	372,564							362,585	358,468	4,117
Employment	328,621	329,908	330,979	330,936	337,353	343,284							333,514	326,921	6,593
Unemployment	31,039	30,184	29,710	27,525	26,693	29,280							29,072	31,548	(2,476)
Unemployment Rate	8.6%	8.4%	8.2%	7.7%	7.3%	7.9%							8.0%	8.8%	-0.8%

**\*Note:** These numbers reflect employment, unemployment, etc. for only those people that are residence of the specified City/Region, thus are not inclusive of people who commute to another city for their jobs.  
(Ex: Someone lives in Wasilla but works in Anchorage. They would be counted in the Mat-Su Borough's labor force and employment numbers, not the Municipality of Anchorage numbers)



## Industry Employment Estimates 2011 Municipality of Anchorage

Industry	Jan	Feb	Mar	Apr	May	Jun	Jul	Aug	Sep	Oct	Nov	Dec	2011 YTD Avg.	2010 YTD Avg.	2011 vs 2010 Monthly Avg	% Change
	revised	revised	revised	revised	revised	preliminary										
<b>Total Nonfarm</b>	147,700	148,100	148,300	149,800	152,900	157,300							150,683	149,383	1,300	0.87%
Goods Producing	11,800	11,500	11,600	12,100	12,900	14,100							12,333	12,300	33	0.27%
Services Providing	135,800	136,600	136,700	137,700	140,000	143,200							138,333	137,083	1,250	0.91%
Mining and Logging <sup>2</sup>	2,800	2,700	2,800	2,800	2,800	2,900							2,800	2,733	67	2.44%
Mining	2,700	2,700	2,700	2,700	2,800	2,900							2,750	2,733	17	0.61%
Oil & Gas	2,500	2,500	2,500	2,600	2,600	2,600							2,550	2,617	-67	-2.55%
Construction	7,200	6,900	7,100	7,500	8,200	9,200							7,683	7,733	-50	-0.65%
Manufacturing	1,900	1,900	1,800	1,800	1,900	2,000							1,883	1,867	17	0.89%
Trade/Transportation/Utilities	31,000	30,600	31,000	31,500	32,800	33,700							31,767	31,933	-167	-0.52%
Wholesale Trade	4,300	4,300	4,400	4,400	4,600	4,700							4,450	4,500	-50	-1.11%
Retail Trade	16,700	16,400	16,600	16,800	16,900	17,200							16,767	16,883	-117	-0.69%
Trans/Warehouse/Utilities	10,000	9,900	10,100	10,300	11,200	11,800							10,550	10,550	0	0.00%
Air Transportation	2,800	2,700	2,800	2,800	3,000	3,100							2,867	2,833	33	1.18%
Information	4,000	4,000	4,000	4,000	4,000	4,000							4,000	4,033	-33	-0.83%
Financial Activities	8,800	8,800	8,700	8,900	9,000	9,200							8,900	8,833	67	0.75%
Professional & Business Svcs	17,800	18,100	18,200	18,100	18,700	19,300							18,367	18,017	350	1.94%
Educational & Health Services	22,200	22,300	22,300	22,300	22,700	22,900							22,450	21,500	950	4.42%
Health Care	16,600	16,700	16,800	16,700	16,900	17,100							16,800	16,050	750	4.67%
Leisure & Hospitality	15,100	15,400	15,500	15,600	16,200	16,700							15,750	15,400	350	2.27%
Accommodation	3,100	3,100	3,100	3,100	3,200	3,500							3,183	3,150	33	1.06%
Food Svcs & Drinking Places	10,000	10,200	10,400	10,600	11,000	11,300							10,583	10,283	300	2.92%
Other Services	5,500	5,500	5,400	5,600	5,800	5,900							5,617	5,567	50	0.90%
<b>Government</b>	31,500	31,900	31,400	31,800	30,900	31,400							31,483	31,783	-300	-0.94%
Federal Government	9,500	9,500	9,500	9,400	9,500	9,800							9,533	9,750	-217	-2.22%
State Government	10,500	10,800	10,800	10,800	10,200	10,400							10,583	10,517	67	0.63%
State Education	2,600	2,900	2,900	2,900	2,000	2,000							2,550	2,483	67	2.68%
Local Government	11,400	11,600	11,200	11,600	11,200	11,200							11,367	11,467	-100	-0.87%
Local Education	8,400	8,600	8,300	8,700	8,300	1,300							7,267	8,533	-1267	-14.84%
Tribal Government <sup>1</sup>	-	-	-	-	-	-							-	-		

- Nonfarm Wage & Salary excludes self-employed workers, fishers, domestics, and unpaid family workers.

- Government includes employees of public school systems and the University of Alaska.

- Beginning January 2001, wage and salary employment estimates were published under a new classification system. The Standard Industrial Classification system (SIC) has been replaced by the North American Industry Classification System (NAICS). Data prior to 2001 are comparable only at the Total Nonfarm and Government levels.

<sup>1/</sup> As of January 2001, certain federally-recognized tribal entities were moved to Local Government, which created a series break for Total Government and Local Government. Please see the April 2002 Alaska Economic Trends publication for a detailed explanation.

<sup>2/</sup> This category was called "Natural Resources and Mining" in previous years. The change is in name only; the industries it includes remain the same.

- Source: Alaska Department of Labor and Workforce Development, Research and Analysis Section

Quick Comparisons		
11 vs 10		
June	1,700	1.12%
11 vs 10		
1st Qtr	1,233	0.84%
11 vs 10		
2nd Qtr YTD	1,367	0.90%
11 vs 10 3rd		
Qtr.	N/A	N/A
11 vs 10 4th		
Qtr.	N/A	N/A

\* **Note:** The above numbers are representative of all people employed in the Municipality of Anchorage, this is inclusive of workers who claim residence outside of the Municipality of Anchorage. (Ex: someone who lives in the Mat-Su, but works in Anchorage would be included in these number)



## Industry Employment Estimates 2011 State of Alaska

Industry	Jan	Feb	Mar	Apr	May	Jun	Jul	Aug	Sep	Oct	Nov	Dec	2011 YTD Avg.	2010 YTD Avg.	2011 vs 2010 Monthly Avg	% Change
	revised	revised	revised	revised	revised	preliminary										
<b>Total Nonfarm</b>	310,500	315,500	317,400	321,400	328,500	348,500							323,633	317,050	6,583	2.08%
Goods Producing	38,600	40,100	41,000	40,300	41,700	51,600							42,217	41,167	1,050	2.55%
Services Providing	271,900	275,400	276,400	281,100	286,800	296,900							281,417	275,883	5,533	2.01%
Mining and Logging <sup>2</sup>	15,100	15,400	15,700	16,000	16,300	16,900							15,900	14,800	1,100	7.43%
Mining	14,900	15,200	15,400	15,600	15,800	16,500							15,567	14,567	1,000	6.86%
Oil & Gas	13,000	12,900	12,900	13,100	13,200	13,600							13,117	12,333	783	6.35%
Construction	12,300	12,200	12,800	14,500	16,200	18,500							14,417	14,583	-167	-1.14%
Manufacturing	11,200	12,500	12,500	9,800	9,200	16,200							11,900	11,783	117	0.99%
Seafood Processing	7,500	8,700	9,000	6,400	5,600	12,200							8,233	8,267	-33	-0.40%
Trade/Transportation/Utilities	60,600	60,400	60,900	62,700	65,900	67,800							63,050	61,300	1,750	2.85%
Wholesale Trade	5,900	5,900	6,000	6,000	6,200	6,500							6,083	6,117	-33	-0.54%
Retail Trade	34,200	33,800	33,900	35,100	36,500	37,500							35,167	34,817	350	1.01%
Food & Beverage Stores	5,900	6,000	5,900	6,100	6,300	6,500							6,117	6,183	-67	-1.08%
General Merchandise Stores	9,800	9,800	9,700	10,000	10,000	10,400							9,950	9,867	83	0.84%
Trans/Warehouse/Utilities	20,500	20,700	21,000	21,600	23,200	23,800							21,800	20,367	1,433	7.04%
Air Transportation	5,100	5,300	5,500	5,600	6,000	6,300							5,633	5,500	133	2.42%
Truck Transportation	3,000	3,200	3,300	3,300	3,300	3,400							3,250	3,033	217	7.14%
Information	6,300	6,400	6,400	6,400	6,500	6,500							6,417	6,300	117	1.85%
Telecommunications	4,200	4,200	4,200	4,300	4,300	4,300							4,250	4,117	133	3.24%
Financial Activities	15,000	15,000	15,100	15,100	14,900	15,000							15,017	14,667	350	2.39%
Professional & Business Svcs	24,800	25,500	25,400	26,100	26,600	28,100							26,083	25,683	400	1.56%
Educational & Health Services	42,800	43,200	43,200	43,100	43,200	43,300							43,133	41,333	1,800	4.35%
Health Care	30,900	31,000	31,200	31,500	31,600	31,800							31,333	29,683	1,650	5.56%
Leisure & Hospitality	27,600	28,500	29,400	30,300	34,200	39,300							31,550	29,800	1,750	5.87%
Accommodation	6,300	6,300	6,300	6,000	7,100	7,800							6,633	7,067	-433	-6.13%
Food Svcs & Drinking Places	17,400	18,700	19,100	19,700	21,700	23,500							20,017	18,550	1,467	7.91%
Other Services	11,400	11,300	11,300	11,600	11,700	12,100							11,567	11,250	317	2.81%
Government	83,400	85,100	84,700	85,800	83,800	84,800							84,600	85,550	-950	-1.11%
Federal Government	16,200	16,400	16,600	16,700	17,300	17,800							16,833	17,500	-667	-3.81%
State Government	25,200	26,300	26,400	26,700	25,300	25,700							25,933	25,867	67	0.26%
State Education	7,500	8,600	8,600	8,600	7,000	6,400							7,783	7,750	33	0.43%
Local Government	42,000	42,400	41,700	42,400	41,200	41,300							41,833	42,183	-350	-0.83%
Local Education	24,700	25,400	24,800	25,500	23,900	23,100							24,567	24,633	-67	-0.27%
Tribal Government <sup>1</sup>	3,500	3,500	3,700	3,700	3,800	4,000							3,700	3,633	67	1.83%

- Nonfarm Wage & Salary excludes self-employed workers, fishers, domestics, and unpaid family workers.

- Government includes employees of public school systems and the University of Alaska.

- Beginning January 2001, wage and salary employment estimates were published under a new classification system. The Standard Industrial Classification system (SIC) has been replaced by the North American Industry Classification System (NAICS). Data prior to 2001 are comparable only at the Total Nonfarm and Government levels.

<sup>1/</sup> As of January 2001, certain federally-recognized tribal entities were moved to Local Government, which created a series break for Total Government and Local Government. [Please see the April 2002 Alaska Economic Trends publication for a detailed explanation.](#)

<sup>2/</sup> This category was called "Natural Resources and Mining" in previous years. The change is in name only; the industries it includes remain the same.

- Source: Alaska Department of Labor and Workforce Development, Research and Analysis Section

### Quick Comparisons

<b>11 vs 10</b>		
June	5,700	1.75%
<b>11 vs 10</b>		
1st Qtr	7,933	2.59%
<b>11 vs 10</b>		
2nd Qtr YTD	5,233	1.60%
<b>11 vs 10 3rd</b>		
Qtr.		0.00%
<b>11 vs 10</b>		
4th Qtr		0.00%

**Click Bishop**  
Commissioner

P.O. Box 111149  
Juneau, AK 99811-1149

www.labor.alaska.gov

STATE OF ALASKA

DEPARTMENT OF LABOR  
AND WORKFORCE DEVELOPMENT

**Beth Leschper**  
Communications Director

907.465.2700  
cell: 907.723.1321

beth.leschper@alaska.gov

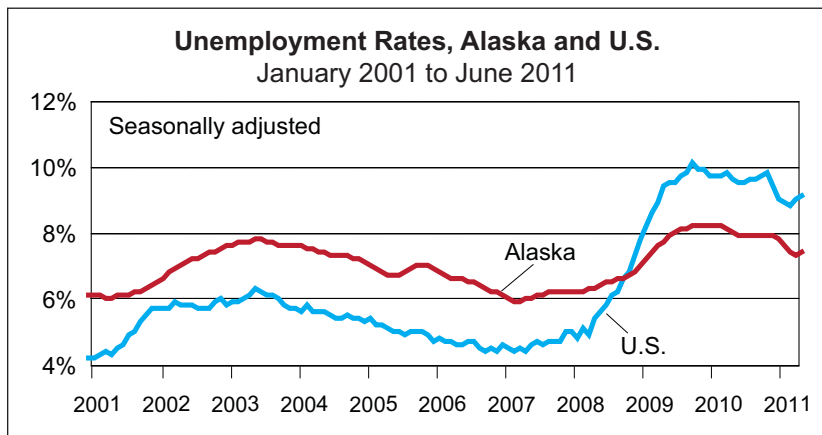
## Press Release

July 22, 2011

COMMISSIONER'S OFFICE

No. 11-40

### Unemployment rate at 7.5 percent in June



#### Alaska Nonfarm Payroll Employment<sup>1</sup>

	Preliminary 6/11	Revised 5/11	Revised 6/10	Year-over-year change		
				6/10	90% confi- dence interval <sup>2</sup>	
Total Nonfarm Employment <sup>3</sup>	348,500	328,500	342,800	5,700	-1,683	13,083
Mining and Logging	16,900	16,300	16,000	900	107	1,693
Oil and Gas	13,600	13,200	13,100	500	-	-
Construction	18,500	16,200	18,600	-100	-2,683	2,483
Manufacturing	16,200	9,200	15,400	800	-194	1,794
Seafood Processing	12,200	5,600	11,600	600	-	-
Trade, Transportation, and Utilities	67,800	65,900	66,700	1,100	-1,272	3,472
Retail Trade	37,500	36,500	37,100	400	-1,628	2,428
Information	6,500	6,500	6,400	100	-481	681
Financial Activities	15,000	14,900	15,300	-300	-2,243	1,643
Professional and Business Services	28,100	26,600	27,500	600	-1,193	2,393
Educational <sup>4</sup> and Health Services	43,300	43,200	41,600	1,700	432	2,968
Health Care	31,800	31,600	30,000	1,800	-	-
Leisure and Hospitality	39,300	34,200	36,900	2,400	363	4,437
Accommodations	7,800	7,100	10,200	-2,400	-	-
Food Svcs. and Drinking Places	23,500	21,700	21,400	2,100	-	-
Other Services	12,100	11,700	11,800	300	-2,876	3,476
Government <sup>5</sup>	84,800	83,800	86,600	-1,800	-	-

Notes: A dash indicates that confidence intervals are not available at this level of detail.

<sup>1</sup>Not seasonally adjusted

<sup>2</sup>Based on the margin of error of the estimate, a 90 percent confidence interval statistically determines a range of values within which the "true" value falls with a 90 percent level of confidence. For more information, go to <http://labor.alaska.gov/research/c-i.pdf>.

<sup>3</sup>Excludes the self-employed, fishermen and other agricultural workers, and private household workers

<sup>4</sup>Private education only

<sup>5</sup>Includes public schools, the University of Alaska, and federally recognized tribal entities

#### Unemployment Rates, Seasonally Adjusted

	6/11	5/11	6/10
Alaska	7.5%	7.3%	7.9%
U.S.	9.2%	9.1%	9.5%

Sources for graph and tables: Alaska Department of Labor and Workforce Development, Research and Analysis Section; and U.S. Bureau of Labor Statistics

Alaska's seasonally adjusted unemployment rate for June was 7.5 percent, a statistically insignificant increase from May's rate of 7.3, which was revised down from 7.4 percent. The comparable nationwide rate in June was 9.2 percent, slightly up from May's rate of 9.1 percent.

In Alaska and nationwide, unemployment rates remain below 2010 levels. The national jobless rate has trended slowly upward since April, and June marked the 31st month in a row in which Alaska's unemployment rate was lower than the nation's.

In May, the most recent month for which individual state data are available, 31 states and Washington, D.C., had unemployment rates higher than Alaska's; 16 states had lower rates; and two reported the same rate. Nevada again had the highest jobless rate at 12.1 percent, and North Dakota remained the lowest at 3.2 percent. Only 24 states reported decreases in their unemployment rates in May, down from the 39 states whose rates decreased in April.

Around Alaska, the not seasonally adjusted unemployment rates ranged from 2.0 percent in Bristol Bay to 23.5 percent in Wade Hampton Census Area. Skagway's rate was 3.1 percent, representing the group of boroughs and census areas whose seasonal fishing and tourism employment prompts a sharp drop in joblessness each summer. Some other areas of the state, such as Wade Hampton, experience chronically high unemployment due to a persistent lack of available jobs.

Beginning with the production of preliminary estimates for March 2011, production of state and metropolitan area Current Employment Statistics estimates has transitioned from the Department of Labor and Workforce Development's Research and Analysis Section to the U.S. Bureau of Labor Statistics. Concurrent with this transition, the BLS implemented several changes to the methods to help standardize estimation across states. While these changes reduce the potential for statistical bias in state and metropolitan area estimates, they may increase month-to-month variability. More detailed information on the CES changes is available on the BLS Web site at <http://www.bls.gov/sae/cesprocs.htm>.

Contact: Alyssa Shanks, Economist (907) 269-4863  
Research and Analysis Web site: <http://laborstats.alaska.gov>

## Labor Force by Borough and Census Area, Not Seasonally Adjusted<sup>1</sup>

	Civilian Labor Force			Unemployed					
	6/11 <sup>P</sup>	5/11	6/10	Number			Rate		
				6/11 <sup>P</sup>	5/11	6/10	6/11 <sup>P</sup>	5/11	6/10
<b>Alaska Statewide</b>	<b>372,564</b>	<b>364,046</b>	<b>365,737</b>	<b>29,280</b>	<b>26,693</b>	<b>28,247</b>	<b>7.9</b>	<b>7.3</b>	<b>7.7</b>
<b>Anchorage/Mat-Su Region</b>	<b>200,134</b>	<b>196,972</b>	<b>194,898</b>	<b>14,484</b>	<b>13,080</b>	<b>14,344</b>	<b>7.2</b>	<b>6.6</b>	<b>7.4</b>
Municipality of Anchorage	156,860	154,375	152,972	10,588	9,488	10,715	6.7	6.1	7.0
Matanuska-Susitna Borough	43,274	42,597	41,926	3,896	3,592	3,629	9.0	8.4	8.7
<b>Gulf Coast Region</b>	<b>42,068</b>	<b>39,874</b>	<b>41,767</b>	<b>3,567</b>	<b>3,299</b>	<b>3,343</b>	<b>8.5</b>	<b>8.3</b>	<b>8.0</b>
Kenai Peninsula Borough	29,464	28,026	29,245	2,612	2,403	2,507	8.9	8.6	8.6
Kodiak Island Borough	6,690	6,412	6,652	508	463	456	7.6	7.2	6.9
Valdez-Cordova Census Area	5,914	5,436	5,870	447	433	380	7.6	8.0	6.5
<b>Interior Region</b>	<b>56,474</b>	<b>55,555</b>	<b>55,613</b>	<b>4,319</b>	<b>3,983</b>	<b>4,062</b>	<b>7.6</b>	<b>7.2</b>	<b>7.3</b>
Denali Borough	2,386	1,826	2,298	103	110	95	4.3	6.0	4.1
Fairbanks North Star Borough	47,071	46,697	46,668	3,344	3,034	3,197	7.1	6.5	6.9
Southeast Fairbanks Census Area	3,756	3,762	3,584	374	357	335	10.0	9.5	9.3
Yukon-Koyukuk Census Area	3,261	3,270	3,063	498	482	435	15.3	14.7	14.2
<b>Northern Region</b>	<b>12,572</b>	<b>12,691</b>	<b>12,363</b>	<b>1,381</b>	<b>1,181</b>	<b>1,313</b>	<b>11.0</b>	<b>9.3</b>	<b>10.6</b>
Nome Census Area	4,043	4,180	4,008	586	509	583	14.5	12.2	14.5
North Slope Borough	5,435	5,459	5,326	282	230	292	5.2	4.2	5.5
Northwest Arctic Borough	3,094	3,052	3,029	513	442	438	16.6	14.5	14.5
<b>Southeast Region</b>	<b>41,956</b>	<b>41,868</b>	<b>41,955</b>	<b>2,954</b>	<b>2,705</b>	<b>2,804</b>	<b>7.0</b>	<b>6.5</b>	<b>6.7</b>
Haines Borough	1,499	1,422	1,531	102	99	104	6.8	7.0	6.8
Hoonah-Angoon Census Area <sup>2</sup>	1,467	1,381	1,433	195	180	153	13.3	13.0	10.7
Juneau, City and Borough of	18,835	19,308	18,754	1,032	943	1,028	5.5	4.9	5.5
Ketchikan Gateway Borough <sup>2</sup>	8,966	8,569	8,929	625	570	581	7.0	6.7	6.5
Petersburg Census Area <sup>2</sup>	1,730	1,759	-	156	160	-	9.0	9.1	-
Prince of Wales-Hyder Census Area <sup>2</sup>	2,619	2,580	-	410	337	-	15.7	13.1	-
Prince of Wales-Outer Ketchikan Census Area <sup>2</sup>	-	-	2,591	-	-	334	-	-	12.9
Sitka, City and Borough of	4,697	4,726	4,821	303	271	293	6.5	5.7	6.1
Skagway, Municipality of <sup>2</sup>	809	774	808	25	34	20	3.1	4.4	2.5
Wrangell, City and Borough of <sup>2</sup>	1,009	1,027	-	77	80	-	7.6	7.8	-
Wrangell-Petersburg Census Area <sup>2</sup>	-	-	2,755	-	-	261	-	-	9.5
Yakutat, City and Borough of	325	322	333	29	31	30	8.9	9.6	9.0
<b>Southwest Region</b>	<b>19,360</b>	<b>17,085</b>	<b>19,143</b>	<b>2,576</b>	<b>2,445</b>	<b>2,382</b>	<b>13.3</b>	<b>14.3</b>	<b>12.4</b>
Aleutians East Borough	1,078	786	1,046	120	151	90	11.1	19.2	8.6
Aleutians West Census Area	2,912	2,206	2,808	214	312	192	7.3	14.1	6.8
Bethel Census Area	7,164	6,992	7,121	1,211	1,078	1,146	16.9	15.4	16.1
Bristol Bay Borough	1,861	1,227	1,865	37	36	38	2.0	2.9	2.0
Dillingham Census Area	2,225	1,985	2,282	250	221	228	11.2	11.1	10.0
Lake and Peninsula Borough	1,321	1,116	1,290	87	91	86	6.6	8.2	6.7
Wade Hampton Census Area	2,799	2,773	2,731	657	556	602	23.5	20.1	22.0

P = Preliminary. As more information becomes available, data are revised every month for the previous month and again at the end of every calendar year.

Note: The official definition of unemployment excludes anyone who has not made an active attempt to find work in the four-week period up to and including the week that includes the 12th of the reference month. Many in rural Alaska do not meet the definition because they have not conducted an active job search due to the scarcity of employment opportunities.

<sup>1</sup>Unemployment rates that are not seasonally adjusted should not be compared with those that are.

<sup>2</sup>Because of the creation of new boroughs, this borough or census area has been changed or no longer exists. Data for the Skagway Municipality and Hoonah-Angoon Census Area (previously the Skagway-Hoonah-Angoon Census Area) became available in 2010. Data for the City and Borough of Wrangell, Petersburg Census Area, and Prince of Wales-Hyder went into effect in January 2011. Prior to January 2011, data were published for Wrangell-Petersburg Census Area and Prince of Wales-Outer Ketchikan Census Area.

Source: Alaska Department of Labor and Workforce Development, Research and Analysis Section; and U.S. Bureau of Labor Statistics