

AEDC November 2011 Employment Report

ANCHORAGE

6.1% 2011 YTD
Unemployment Rate



5.5% November 2011
Unemployment Rate

1,627 Average increase of
jobs (YTD) for
2011 vs. 2010

1.92% **2,900** Increase
of Jobs for
Nov. '11 vs.
Nov '10

1,743 Average more
workers (YTD) in
2011 than 2010

Total Jobs = Goods + Services

1.17% **1,618** More Services Producing
Jobs (YTD) in 2011 than
2010

0%

FLAT

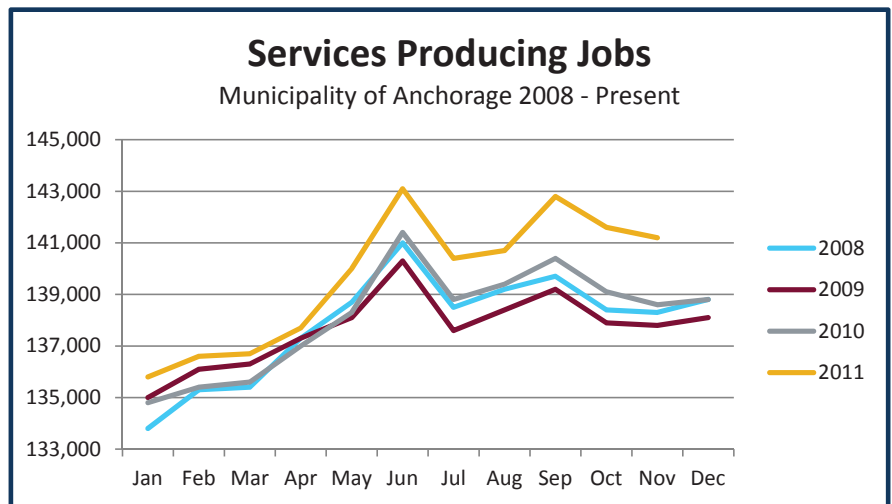
Goods Producing Jobs
(YTD) in 2011 than 2010

Executive Summary

The unemployment rate in Anchorage continues to trail the national level by about 3 percentage points and for November unemployment is at 5.5% which is its 4th consecutive month below 6%. Overall unemployment is averaging 6.1 percent in Anchorage for the first 10 months of 2011, which is 0.8 percent below the same period for 2010. Monthly labor force growth in Anchorage has continued to track above 2010 levels and is currently averaging 1,743 more workers in 2011, compared to 2010. Job growth continues to outpace labor force growth, which really means that the Anchorage economy is continuing to grow.

Services Producing Jobs

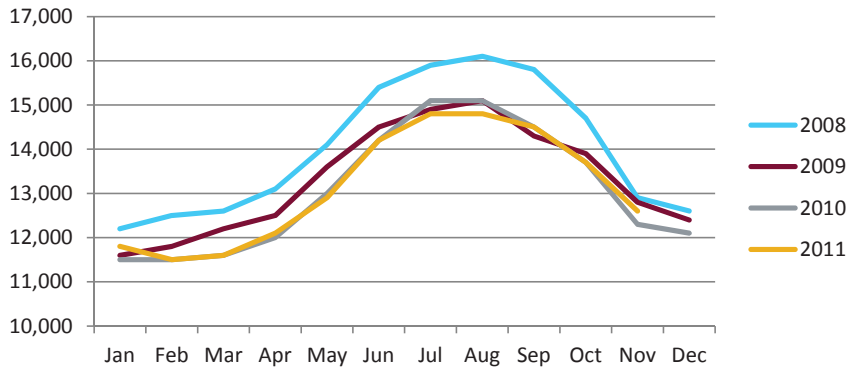
Services producing jobs in Anchorage (engineering, retail, tourism, healthcare, etc.) are up 2011 over 2010 by 1,618 jobs, or 1.17 percent. The sectors seeing the most growth are professional & business services (up 318, 1.73 percent), and educational and health services (up 991 jobs, 4.58 percent, with 773 of those in the healthcare sector).



Overall, unemployment is averaging **6.1%** in Anchorage for the first 11 months of 2011, which is **0.8%** below 2010 for the same time.

Goods Producing Jobs

Municipality of Anchorage 2008 - Present



Goods Producing Jobs

Goods producing jobs which are construction work, mining, and oil & gas production are flat with 2010. Manufacturing, interestingly enough, continues to show signs of growth (up 100 jobs, 5.19 percent). Even with the growth in Manufacturing this segment is still trailing the highs of 2008. The slow job growth in the goods producing sector is being offset by significant employment increases in the service sector. Job growth in the professional services and health care industries has fueled the sustained decrease in Anchorage's unemployment rate in the face of a growing labor force.

5.19%

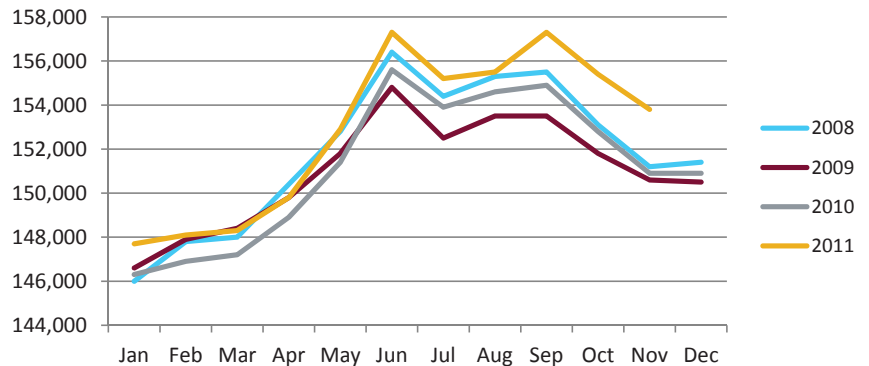
100 More
Manufacturing
Jobs (YTD) in 2011
than 2010

Anchorage Employment

Preliminary numbers for Anchorage's employment show an average increase of 1,627 jobs for 2011 vs. 2010, with a month-to-month (Nov '11 vs. Nov '10) comparison showing an increase of 2,900 jobs or 1.92 percent. Employment numbers are still showing overall growth over the highs of 2008.

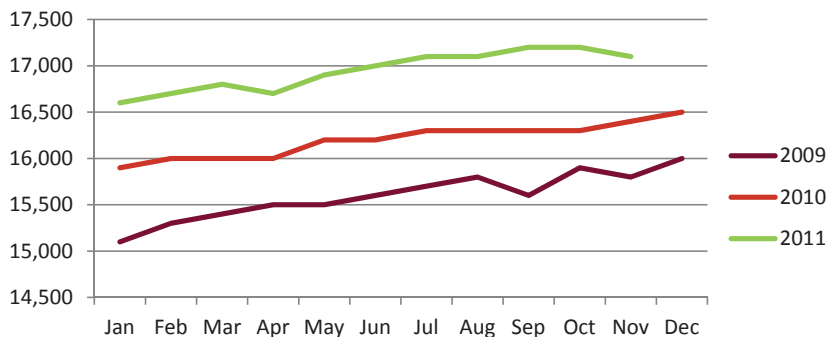
Anchorage Employment

Municipality of Anchorage 2008-Present



Health Care Employment

Municipality of Anchorage 2009-Present



Health Care Employment

In January Anchorage was averaging 16,600 Health Care jobs, in November Anchorage averaged 17,100 jobs. Compared to 2010 levels this is a growth of about 773 jobs, or about 4.78 percent. This continues to be a hot sector for growth. Recent employment figures and long-term projections lead us to believe that the growth will be sustained.

17,100

Health Care Jobs
in Nov. 2011

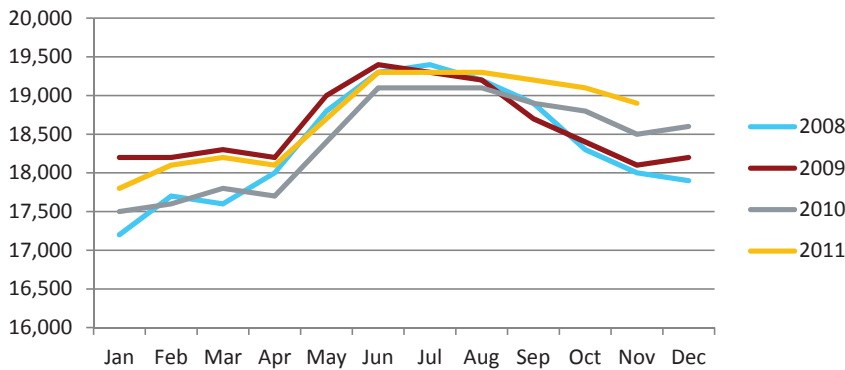
4.78%

increase of about

773 jobs (YTD)
in 2011 vs. 2010

Professional & Business Services

Municipality of Anchorage 2008 - Present



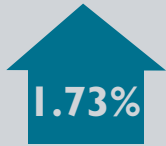
Professional & Business Services

Professional and Business Services are part of the services side of the jobs equation.

(Total jobs= Goods + Services)

AEDC expected this sector to grow by about 100 jobs in 2011. So far this year this indicator is up on average 318 jobs or 1.73 percent.

Don't start counting chickens yet; consider this a trailing rather than leading indicator of overall health. These jobs are mostly dependent on Gov't and Oil & Gas spending. While this sector is currently very healthy we could see changes due to Gov't spending cuts.



318

Professional & Business Services Jobs (YTD) in 2011 vs. 2010

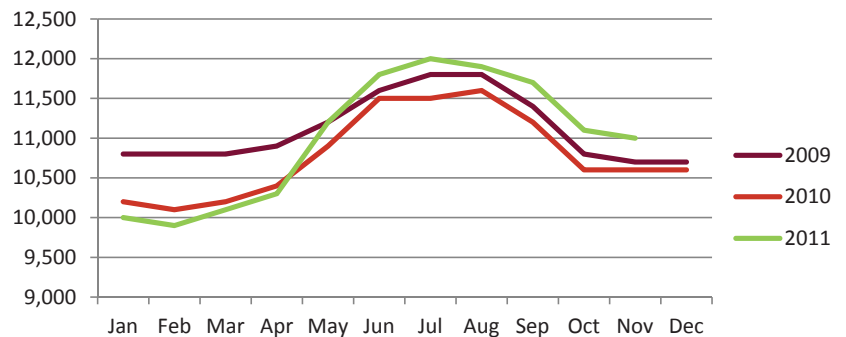
Transportation Employment

AEDC predicted a 300 job increase in transportation jobs for 2011.

The year started out a little behind 2010 (10,000 vs 10,200) jobs but then in about May it turned around and the industry started to see growth. Currently this sector is averaging 11,000 jobs that's up 200 jobs from 2010 or 1.85 percent. Keeping it above the recent highs of 2009.

Transportation Employment

Municipality of Anchorage 2009-Present



11,000

Transportation jobs in November 2011



increase of about **200** Transportation Jobs (YTD) in 2011 vs. 2010



Unemployment Analysis (Year-To-Date, 2011)

• Anchorage • Mat-Su Borough • Kenai Peninsula Borough •

	Jan revised	Feb revised	Mar revised	Apr revised	May revised	Jun revised	Jul revised	Aug revised	Sep revised	Oct revised	Nov preliminary	Dec	11 YTD Avg	10 YTD Avg	11 vs 10
Municipality of Anchorage															
Labor Force	156,242	155,238	155,438	154,487	154,375	156,771	155,568	154,897	155,221	157,557	158,252		155,822	154,080	1,743
Employment	145,940	145,163	145,353	144,900	144,887	146,288	146,278	145,919	146,228	148,850	149,627		146,312	143,412	2,900
Unemployment	10,302	10,075	10,085	9,587	9,488	10,483	9,290	8,978	8,993	8,707	8,625		9,510	10,667	(1,157)
Unemployment Rate	6.6%	6.5%	6.5%	6.2%	6.1%	6.7%	6.0%	5.8%	5.8%	5.5%	5.5%		6.1%	6.9%	-0.8%
Mat-Su Borough															
Labor Force	43,892	43,546	43,527	42,882	42,597	43,242	42,797	42,482	42,552	43,476	44,062		43,187	42,489	697
Employment	39,289	39,080	39,131	39,009	39,005	39,383	39,380	39,283	39,367	40,072	40,281		39,389	38,608	781
Unemployment	4,603	4,466	4,396	3,873	3,592	3,859	3,417	3,199	3,185	3,404	3,781		3,798	3,881	(83)
Unemployment Rate	10.5%	10.3%	10.1%	9.0%	8.4%	8.9%	8.0%	7.5%	7.5%	7.8%	8.6%		8.8%	9.1%	-0.3%
Kenai Peninsula Borough															
Labor Force	26,172	26,206	26,481	26,584	28,026	29,611	29,365	29,045	27,603	27,387	27,229		27,610	27,353	257
Employment	23,108	23,220	23,581	23,970	25,623	27,025	27,081	26,852	25,395	25,126	24,806		25,072	24,630	441
Unemployment	3,064	2,986	2,900	2,614	2,403	2,586	2,284	2,193	2,208	2,261	2,423		2,538	2,723	(184)
Unemployment Rate	11.7%	11.4%	11.0%	9.8%	8.6%	8.7%	7.8%	7.6%	8.0%	8.3%	8.9%		9.2%	10.0%	-0.8%
Southcentral Region															
Labor Force	226,306	224,990	225,446	223,953	224,998	229,624	227,730	226,424	225,376	228,420	229,543	-	226,619	223,922	2,697
Employment	208,337	207,463	208,065	207,879	209,515	212,696	212,739	212,054	210,990	214,048	214,714	-	210,773	206,651	4,122
Unemployment	17,969	17,527	17,381	16,074	15,483	16,928	14,991	14,370	14,386	14,372	14,829	-	15,846	17,271	(1,425)
Unemployment Rate	7.9%	7.8%	7.7%	7.2%	6.9%	7.4%	6.6%	6.3%	6.4%	6.3%	6.5%		7.0%	7.7%	-0.7%
State of Alaska															
Labor Force	359,660	360,092	360,689	358,461	364,046	372,587	375,280	372,614	369,004	366,443	366,364		365,931	361,483	4,448
Employment	328,621	329,908	330,979	330,936	337,353	343,592	349,602	347,989	344,336	341,484	340,079		338,625	332,567	6,058
Unemployment	31,039	30,184	29,710	27,525	26,693	28,995	25,678	24,625	24,668	24,959	26,285		27,306	28,916	(1,610)
Unemployment Rate	8.6%	8.4%	8.2%	7.7%	7.3%	7.8%	6.8%	6.6%	6.7%	6.8%	7.2%		7.5%	8.0%	-0.5%

***Note:** These numbers reflect employment, unemployment, etc. for only those people that are residence of the specified City/Region, thus are not inclusive of people who commute to another city for their jobs.
(Ex: Someone lives in Wasilla but works in Anchorage. They would be counted in the Mat-Su Borough's labor force and employment numbers, not the Municipality of Anchorage numbers)



Industry Employment Estimates 2011 Municipality of Anchorage

Industry	Jan	Feb	Mar	Apr	May	Jun	Jul	Aug	Sep	Oct	Nov	Dec	2011 YTD Avg.	2010 YTD Avg.	2011 vs 2010 Monthly Avg	% Change
	revised	revised	revised	revised	revised	revised	revised	revised	revised	revised	preliminary					
Total Nonfarm	147,700	148,100	148,300	149,800	152,900	157,300	155,200	155,500	157,300	155,400	153,800		152,845	151,218	1,627	1.08%
Goods Producing	11,800	11,500	11,600	12,100	12,900	14,200	14,800	14,800	14,500	13,700	12,600		13,136	13,136	0	0.00%
Services Providing	135,800	136,600	136,700	137,700	140,000	143,100	140,400	140,700	142,800	141,600	141,200		139,691	138,073	1,618	1.17%
Mining and Logging ²	2,800	2,700	2,800	2,800	2,800	3,000	2,900	2,900	2,900	2,900	2,900		2,855	2,764	91	3.29%
Mining	2,700	2,700	2,700	2,700	2,800	3,000	2,900	2,900	2,900	2,800	2,800		2,800	2,764	36	1.32%
Oil & Gas	2,500	2,500	2,500	2,600	2,600	2,800	2,600	2,600	2,600	2,700	2,700		2,609	2,600	9	0.35%
Construction	7,200	6,900	7,100	7,500	8,200	9,200	9,500	9,600	9,400	8,700	7,700		8,273	8,473	-200	-2.36%
Manufacturing	1,900	1,900	1,800	1,800	1,900	2,000	2,400	2,300	2,200	2,100	2,000		2,027	1,927	100	5.19%
Trade/Transportation/Utilities	31,000	30,600	31,000	31,500	32,800	33,700	34,200	33,900	33,300	32,800	32,900		32,518	32,409	109	0.34%
Wholesale Trade	4,300	4,300	4,400	4,400	4,600	4,800	4,900	4,800	4,600	4,500	4,500		4,555	4,582	-27	-0.60%
Retail Trade	16,700	16,400	16,600	16,800	16,900	17,200	17,300	17,200	17,100	17,200	17,500		16,991	17,027	-36	-0.21%
Trans/Warehouse/Utilities	10,000	9,900	10,100	10,300	11,200	11,800	12,000	11,900	11,700	11,100	11,000		11,000	10,800	200	1.85%
Air Transportation	2,800	2,700	2,800	2,800	3,000	3,100	3,100	3,100	3,000	2,900	2,900		2,927	2,845	82	2.88%
Information	4,000	4,000	4,000	4,000	4,000	4,000	4,000	4,000	4,000	4,000	4,000		4,000	4,055	-55	-1.35%
Financial Activities	8,800	8,800	8,700	8,900	9,000	9,200	9,300	9,200	9,100	8,900	8,800		8,973	8,900	73	0.82%
Professional & Business Svcs	17,800	18,100	18,200	18,100	18,700	19,300	19,300	19,300	19,200	19,100	18,900		18,727	18,409	318	1.73%
Educational & Health Services	22,200	22,300	22,300	22,300	22,700	22,800	22,900	22,800	22,800	22,800	22,800		22,609	21,618	991	4.58%
Health Care	16,600	16,700	16,800	16,700	16,900	17,000	17,100	17,100	17,200	17,200	17,100		16,945	16,173	773	4.78%
Leisure & Hospitality	15,100	15,400	15,500	15,600	16,200	16,700	17,100	17,200	16,800	16,200	16,200		16,182	15,745	436	2.77%
Accommodation	3,100	3,100	3,100	3,100	3,200	3,600	3,600	3,600	3,300	3,100	3,100		3,264	3,191	73	2.28%
Food Svcs & Drinking Places	10,000	10,200	10,400	10,600	11,000	11,200	11,400	11,400	11,200	11,100	10,900		10,855	10,545	309	2.93%
Other Services	5,500	5,500	5,400	5,600	5,800	5,900	5,800	5,900	5,800	5,700	5,700		5,691	5,682	9	0.16%
Government	31,500	31,900	31,400	31,800	30,900	31,400	27,800	28,400	31,800	32,000	31,800		30,973	31,264	-291	-0.93%
Federal Government	9,500	9,500	9,500	9,400	9,500	9,700	9,700	9,700	9,600	9,500	9,400		9,545	9,773	-227	-2.33%
State Government	10,500	10,800	10,800	10,800	10,200	10,500	10,100	9,800	11,100	11,100	11,100		10,618	10,555	64	0.60%
State Education	2,600	2,900	2,900	2,900	2,000	2,000	1,900	1,700	2,900	2,900	2,900		2,509	2,482	27	1.10%
Local Government	11,400	11,600	11,200	11,600	11,200	11,200	7,900	9,000	11,200	11,400	11,300		10,818	10,927	-109	-1.00%
Local Education	8,400	8,600	8,300	8,700	8,300	8,300	4,900	6,100	8,100	8,200	8,200		7,827	7,955	-127	-1.60%
Tribal Government ¹	-	-	-	-	-	-	-	-	-	-	-		-	-		

- Nonfarm Wage & Salary excludes self-employed workers, fishers, domestics, and unpaid family workers.

- Government includes employees of public school systems and the University of Alaska.

- Beginning January 2001, wage and salary employment estimates were published under a new classification system. The Standard Industrial Classification system (SIC) has been replaced by the North American Industry Classification System (NAICS). Data prior to 2001 are comparable only at the Total Nonfarm and Government levels.

^{1/} As of January 2001, certain federally-recognized tribal entities were moved to Local Government, which created a series break for Total Government and Local Government. Please see the April 2002 Alaska Economic Trends publication for a detailed explanation.

^{2/} This category was called "Natural Resources and Mining" in previous years. The change is in name only; the industries it includes remain the same.

- Source: Alaska Department of Labor and Workforce Development, Research and Analysis Section

Quick Comparisons		
11 vs 10		
November	2,900	1.92%
11 vs 10		
1st Qtr	1,233	0.84%
11 vs 10		
2nd Qtr	1,367	0.90%
11 vs 10 3rd		
Qtr.	1,533	0.99%
11 vs 10 4th		
Qtr. YTD	2,750	1.81%

* **Note:** The above numbers are representative of all people employed in the Municipality of Anchorage, this is inclusive of workers who claim residence outside of the Municipality of Anchorage. (Ex: someone who lives in the Mat-Su, but works in Anchorage would be included in these number)



Industry Employment Estimates 2011 State of Alaska

Industry	Jan	Feb	Mar	Apr	May	Jun	Jul	Aug	Sep	Oct	Nov	Dec	2011 YTD Avg.	2010 YTD Avg.	2011 vs 2010 Monthly Avg	% Change
	revised	revised	revised	revised	revised	revised	revised	revised	revised	revised	preliminary					
Total Nonfarm	310,500	315,500	317,400	321,400	328,500	349,500	355,300	352,300	343,300	327,200	318,000		330,809	325,345	5,464	1.68%
Goods Producing	38,600	40,100	41,000	40,300	41,700	53,000	61,000	58,500	49,800	44,000	38,500		46,045	44,927	1,118	2.49%
Services Providing	271,900	275,400	276,400	281,100	286,800	296,500	294,300	293,800	293,500	283,200	279,500		284,764	280,418	4,345	1.55%
Mining and Logging ²	15,100	15,400	15,700	16,000	16,300	17,000	17,200	17,200	17,100	16,800	16,600		16,400	15,464	936	6.06%
Mining	14,900	15,200	15,400	15,600	15,800	16,500	16,700	16,700	16,600	16,400	16,100		15,991	15,173	818	5.39%
Oil & Gas	13,000	12,900	12,900	13,100	13,200	13,500	13,600	13,600	13,700	13,600	13,600		13,336	12,755	582	4.56%
Construction	12,300	12,200	12,800	14,500	16,200	18,900	19,000	19,000	18,600	17,400	14,500		15,945	16,200	-255	-1.57%
Manufacturing	11,200	12,500	12,500	9,800	9,200	17,100	24,800	22,300	14,100	9,800	7,400		13,700	13,264	436	3.29%
Seafood Processing	7,500	8,700	9,000	6,400	5,600	10,800	17,500	15,000	8,500	4,800	3,600		8,855	9,736	-882	-9.06%
Trade/Transportation/Utilities	60,600	60,400	60,900	62,700	65,900	68,100	69,400	69,600	67,000	63,100	62,400		64,555	62,873	1,682	2.67%
Wholesale Trade	5,900	5,900	6,000	6,000	6,200	6,500	6,700	6,700	6,400	6,100	6,000		6,218	6,236	-18	-0.29%
Retail Trade	34,200	33,800	33,900	35,100	36,500	37,600	37,900	37,800	36,900	35,900	35,800		35,945	35,345	600	1.70%
Food & Beverage Stores	5,900	6,000	5,900	6,100	6,300	6,500	6,600	6,500	6,300	6,200	6,100		6,218	6,273	-55	-0.87%
General Merchandise Stores	9,800	9,800	9,700	10,000	10,000	10,400	10,300	10,400	10,400	10,500	10,700		10,182	9,927	255	2.56%
Trans/Warehouse/Utilities	20,500	20,700	21,000	21,600	23,200	24,000	24,800	25,100	23,700	21,100	20,600		22,391	21,291	1,100	5.17%
Air Transportation	5,100	5,300	5,500	5,600	6,000	6,300	6,400	6,400	6,100	5,700	5,400		5,800	5,664	136	2.41%
Truck Transportation	3,000	3,200	3,300	3,300	3,300	3,600	3,700	3,900	3,700	3,500	3,500		3,455	3,136	318	10.14%
Information	6,300	6,400	6,400	6,400	6,500	6,500	6,600	6,600	6,500	6,500	6,500		6,473	6,355	118	1.86%
Telecommunications	4,200	4,200	4,200	4,300	4,300	4,400	4,500	4,500	4,500	4,500	4,400		4,364	4,182	182	4.35%
Financial Activities	15,000	15,000	15,100	15,100	14,900	14,900	15,000	15,000	14,800	15,100	14,900		14,982	14,955	27	0.18%
Professional & Business Svcs	24,800	25,500	25,400	26,100	26,600	28,000	28,600	28,600	28,300	26,900	26,200		26,818	26,245	573	2.18%
Educational & Health Services	42,800	43,200	43,200	43,100	43,200	43,100	42,700	42,900	43,300	43,900	43,800		43,200	41,664	1,536	3.69%
Health Care	30,900	31,000	31,200	31,500	31,600	31,800	31,800	31,900	31,900	32,000	31,900		31,591	29,982	1,609	5.37%
Leisure & Hospitality	27,600	28,500	29,400	30,300	34,200	39,100	41,400	40,800	37,200	30,500	29,300		33,482	31,736	1,745	5.50%
Accommodation	6,300	6,300	6,300	6,000	7,100	8,100	8,300	8,300	7,200	5,300	5,600		6,800	7,836	-1,036	-13.23%
Food Svcs & Drinking Places	17,400	18,700	19,100	19,700	21,700	23,400	24,400	23,800	22,600	20,700	19,900		21,036	19,164	1,873	9.77%
Other Services	11,400	11,300	11,300	11,600	11,700	12,100	11,600	11,100	11,100	11,300	11,100		11,418	11,509	-91	-0.79%
Government	83,400	85,100	84,700	85,800	83,800	84,700	79,000	79,200	85,300	85,900	85,300		83,836	85,082	-1,245	-1.46%
Federal Government	16,200	16,400	16,600	16,700	17,300	17,700	17,700	17,500	17,200	16,500	15,900		16,882	17,536	-655	-3.73%
State Government	25,200	26,300	26,400	26,700	25,300	25,700	24,900	24,300	26,700	26,600	26,500		25,873	25,909	-36	-0.14%
State Education	7,500	8,600	8,600	8,600	7,000	6,400	6,000	5,700	8,500	8,600	8,700		7,655	7,645	9	0.12%
Local Government	42,000	42,400	41,700	42,400	41,200	41,300	36,400	37,400	41,400	42,800	42,900		41,082	41,636	-555	-1.33%
Local Education	24,700	25,400	24,800	25,500	23,900	23,100	17,800	19,200	23,700	25,100	25,300		23,500	23,673	-173	-0.73%
Tribal Government ¹	3,500	3,500	3,700	3,700	3,800	3,900	3,900	3,800	4,000	3,900	3,800		3,773	3,818	-45	-1.19%

- Nonfarm Wage & Salary excludes self-employed workers, fishers, domestics, and unpaid family workers.

- Government includes employees of public school systems and the University of Alaska.

- Beginning January 2001, wage and salary employment estimates were published under a new classification system. The Standard Industrial Classification system (SIC) has been replaced by the North American Industry Classification System (NAICS). Data prior to 2001 are comparable only at the Total Nonfarm and Government levels.

^{1/} As of January 2001, certain federally-recognized tribal entities were moved to Local Government, which created a series break for Total Government and Local Government. [Please see the April 2002 Alaska Economic Trends publication for a detailed explanation.](#)

^{2/} This category was called "Natural Resources and Mining" in previous years. The change is in name only; the industries it includes remain the same.

- Source: Alaska Department of Labor and Workforce Development, Research and Analysis Section

Quick Comparisons

11 vs 10		
November	100	0.03%
11 vs 10		
1st Qtr	7,933	2.59%
11 vs 10		
2nd Qtr	5,567	1.70%
11 vs 10 3rd		
Qtr.	5,700	1.65%
11 vs 10		
4th Qtr TYD	1,250	0.39%

Click Bishop
Commissioner

P.O. Box 111149
Juneau, AK 99811-1149
www.labor.alaska.gov



Beth Leschper
Communications Director

907.465.2700
cell: 907.723.1321
beth.leschper@alaska.gov

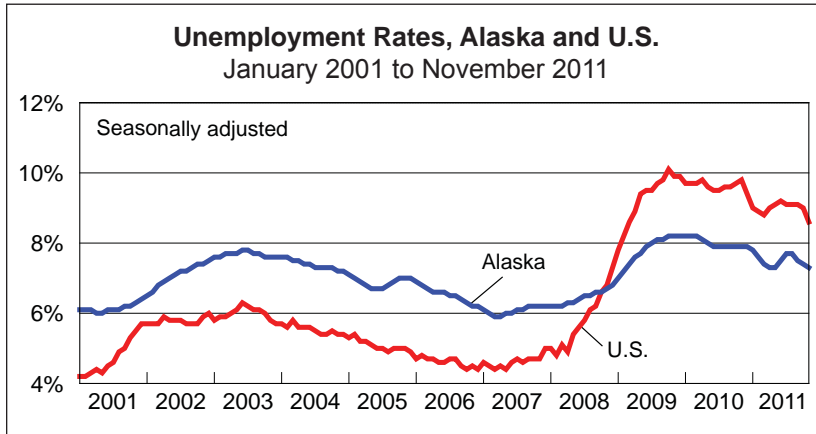
Press Release

December 16, 2011

COMMISSIONER'S OFFICE

No. 11-59

Unemployment rate at 7.3 percent in November



Alaska's seasonally adjusted unemployment rate was essentially unchanged in November, declining one-tenth of a percentage point to 7.3 percent.

The comparable national rate for November was 8.6 percent, down from 9.0 percent in October. The big drop in the national rate was only the second time in the past 10 years that it has fallen by as much as four-tenths of a percentage point.

The U.S. and Alaska rates have both drifted downward over the past year. Alaska's unemployment rate is down six-tenths of a percentage point from November 2010 and the national rate is down 1.2 percentage points.

Alaska Nonfarm Payroll Employment¹

	Preliminary 11/11	Revised 10/11	Revised 11/10	Year-over-year change		
				11/10	90% confidence interval ²	
Total Nonfarm Employment ³	318,000	327,200	317,900	100	-7,283	7,483
Mining and Logging	16,600	16,800	15,800	800	7	1,593
Oil and Gas	13,600	13,600	13,000	600	-	-
Construction	14,500	17,400	14,700	-200	-2,783	2,383
Manufacturing	7,400	9,800	8,700	-1,300	-2,294	-306
Retail Trade	35,800	35,900	35,100	700	-1,328	2,728
Information	6,500	6,500	6,400	100	-481	681
Financial Activities	14,900	15,100	15,200	-300	-2,243	1,643
Professional and Business Services	26,200	26,900	25,700	500	-1,293	2,293
Educational ⁴ and Health Services	43,800	43,900	43,000	800	-468	2,068
Health Care	31,900	32,000	30,900	1,000	-	-
Leisure and Hospitality	29,300	30,500	28,900	400	-1,637	2,437
Other Services	11,100	11,300	11,600	-500	-3,676	2,676
Government ⁵	85,300	85,900	86,200	-900	-	-

Notes: A dash indicates that confidence intervals are not available at this level of detail.

¹Not seasonally adjusted.

²Based on the margin of error of the estimate, a 90 percent confidence interval statistically determines a range of values within which the "true" value falls with a 90 percent level of confidence.

For more information, go to <http://labor.alaska.gov/research/c-i.pdf>.

³Excludes the self-employed, fishermen and other agricultural workers, and private household workers.

Only select categories are included, so sector values will not sum to the total employment.

⁴Private education only.

⁵Includes public schools, the University of Alaska, and federally recognized tribal entities

Unemployment Rates, Seasonally Adjusted

	11/11	10/11	11/10
Alaska	7.3%	7.4%	7.9%
U.S.	8.6%	9.0%	9.8%

Not seasonally adjusted unemployment rates increased in all but one of the state's regions in November, which is typical as fisheries slow and tourism enters a deep freeze. The biggest increases in unemployment were in the most fishing-dependent regions — the Gulf Coast and Southwest rates increased by more than a percentage point, and rates nearly doubled in Kodiak and the Aleutians.

Unemployment was 20 percent or higher in Skagway and the Denali Borough, the two areas that depend most on tourism.

Preliminary employment estimates show marginal growth since November 2010, although the estimates are subject to potentially large revisions. Overall, it appears that 2011 will be a year of mild job growth for Alaska.

Beginning with the production of preliminary estimates for March 2011, production of employment estimates has transitioned from the Department of Labor and Workforce Development's Research and Analysis Section to the U.S. Bureau of Labor Statistics. Concurrent with this transition, BLS implemented several changes to the methods to help standardize estimation across states. While these changes reduce the potential for statistical bias in state and metropolitan area estimates, they may increase month-to-month variability. More detailed information on the changes is available on the BLS Web site at <http://www.bls.gov/sae/cesprocs.htm>.

Labor Force by Borough and Census Area, Not Seasonally Adjusted¹

	Civilian Labor Force			Unemployed					
	11/11 ^P	10/11	11/10	Number			Rate		
	11/11 ^P	10/11	11/10	11/11 ^P	10/11	11/10	11/11 ^P	10/11	11/10
Alaska Statewide	366,364	366,443	359,399	26,285	24,959	28,040	7.2	6.8	7.8
Anchorage/Mat-Su Region	202,314	201,033	200,750	12,406	12,111	13,901	6.1	6.0	6.9
Municipality of Anchorage	158,252	157,557	157,222	8,625	8,707	10,006	5.5	5.5	6.4
Matanuska-Susitna Borough	44,062	43,476	43,528	3,781	3,404	3,895	8.6	7.8	8.9
Gulf Coast Region	39,098	39,497	37,382	3,535	3,118	3,724	9.0	7.9	10.0
Kenai Peninsula Borough	27,229	27,387	26,018	2,423	2,261	2,658	8.9	8.3	10.2
Kodiak Island Borough	7,012	6,934	6,590	628	387	578	9.0	5.6	8.8
Valdez-Cordova Census Area	4,857	5,176	4,774	484	470	488	10.0	9.1	10.2
Interior Region	55,314	55,727	54,069	4,036	3,772	4,198	7.3	6.8	7.8
Denali Borough	839	945	776	168	145	155	20.0	15.3	20.0
Fairbanks North Star Borough	47,783	47,978	46,798	3,025	2,839	3,203	6.3	5.9	6.8
Southeast Fairbanks Census Area	3,572	3,607	3,571	375	343	379	10.5	9.5	10.6
Yukon-Koyukuk Census Area	3,120	3,197	2,924	468	445	461	15.0	13.9	15.8
Northern Region	13,107	12,898	12,835	1,146	1,175	1,133	8.7	9.1	8.8
Nome Census Area	4,262	4,209	4,162	459	465	491	10.8	11.0	11.8
North Slope Borough	5,663	5,518	5,551	266	276	271	4.7	5.0	4.9
Northwest Arctic Borough	3,182	3,171	3,122	421	434	371	13.2	13.7	11.9
Southeast Region	39,003	39,323	38,063	2,845	2,669	3,011	7.3	6.8	7.9
Haines Borough	1,173	1,296	1,193	111	101	120	9.5	7.8	10.1
Hoonah-Angoon Census Area ²	838	947	862	151	130	170	18.0	13.7	19.7
Juneau, City and Borough of	18,760	18,477	18,234	928	921	1,032	4.9	5.0	5.7
Ketchikan Gateway Borough ²	7,855	8,083	7,552	577	527	614	7.3	6.5	8.1
Petersburg Census Area ²	1,692	1,703	-	176	141	-	10.4	8.3	-
Prince of Wales-Hyder Census Area ²	2,462	2,519	-	335	328	-	13.6	13.0	-
Prince of Wales-Outer Ketchikan Census Area ²	-	-	2,379	-	-	340	-	-	14.3
Sitka, City and Borough of	4,390	4,347	4,382	274	256	282	6.2	5.9	6.4
Skagway, Municipality of ²	584	644	574	160	140	147	27.4	21.7	25.6
Wrangell, City and Borough of ²	1,002	1,027	-	104	102	-	10.4	9.9	-
Wrangell-Petersburg Census Area ²	-	-	2,614	-	-	271	-	-	10.4
Yakutat, City and Borough of	247	280	273	29	23	35	11.7	8.2	12.8
Southwest Region	17,524	17,964	16,299	2,315	2,114	2,074	13.2	11.8	12.7
Aleutians East Borough	943	1,124	809	168	112	100	17.8	10.0	12.4
Aleutians West Census Area	2,787	2,764	2,408	351	190	184	12.6	6.9	7.6
Bethel Census Area	7,377	7,553	7,135	951	985	978	12.9	13.0	13.7
Bristol Bay Borough	563	603	519	41	40	39	7.3	6.6	7.5
Dillingham Census Area	1,871	1,833	1,816	198	193	192	10.6	10.5	10.6
Lake and Peninsula Borough	1,112	1,162	900	72	68	75	6.5	5.9	8.3
Wade Hampton Census Area	2,871	2,925	2,712	534	526	506	18.6	18.0	18.7

P = Preliminary. As more information becomes available, data are revised every month for the previous month and again at the end of every calendar year.

Note: The official definition of unemployment excludes anyone who has not made an active attempt to find work in the four-week period up to and including the week that includes the 12th of the reference month. Many in rural Alaska do not meet the definition because they have not conducted an active job search due to the scarcity of employment opportunities.

¹Unemployment rates that are not seasonally adjusted should not be compared with those that are.

²Because of the creation of new boroughs, this borough or census area has been changed or no longer exists. Data for the Skagway Municipality and Hoonah-Angoon Census Area (previously the Skagway-Hoonah-Angoon Census Area) became available in 2010. Data for the City and Borough of Wrangell, Petersburg Census Area, and Prince of Wales-Hyder went into effect in January 2011. Prior to January 2011, data were published for Wrangell-Petersburg Census Area and Prince of Wales-Outer Ketchikan Census Area.

Source: Alaska Department of Labor and Workforce Development, Research and Analysis Section; and U.S. Bureau of Labor Statistics