

AEDC February 2012 Employment Report

ANCHORAGE

5.9% 2012 YTD
Unemployment Rate



6.0% February 2012
Unemployment Rate

1,550 Average increase of
jobs (YTD) for
2012 vs. 2011

1.19% **1,800** Increase
of Jobs for
Feb '12 vs.
Feb '11

1,368 Average less
workers (YTD) in
2012 than 2011

Total Jobs = Goods + Services

0.87% **1,200** More Services Producing
Jobs (YTD) in 2012 than
2011

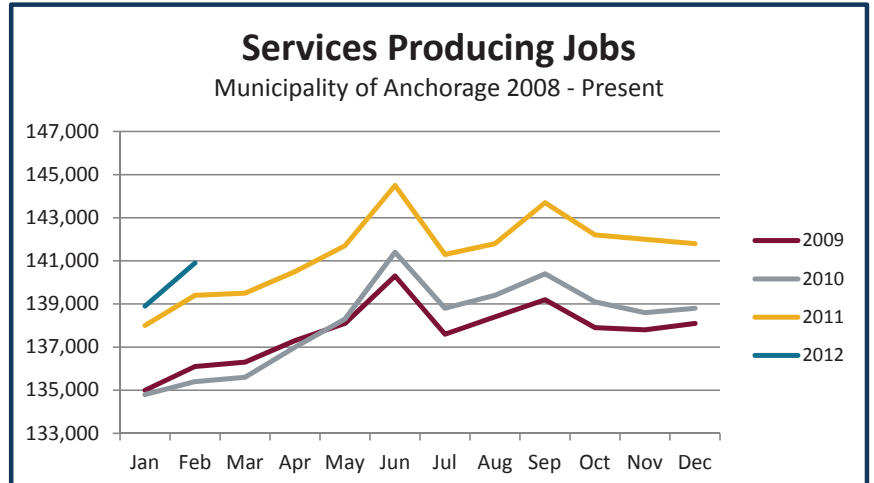
3.11% **350** Goods Producing Jobs
(YTD) in 2012 than 2011

Executive Summary

The unemployment rate in Anchorage is averaging 5.9 percent so far in 2012. This is 0.8 percentage points less than the same time last year. In 2011, we saw the unemployment rate decline pretty steadily all year, but what was so exciting about the decrease in 2011 is that it happened in the face of a growing labor force. So far in 2012 this isn't the same case. Unemployment is down, but our labor force is also down about 1,360 people. It's a little early in the year for this to be a cause for concern, but it is something to keep an eye out for.

Services Producing Jobs

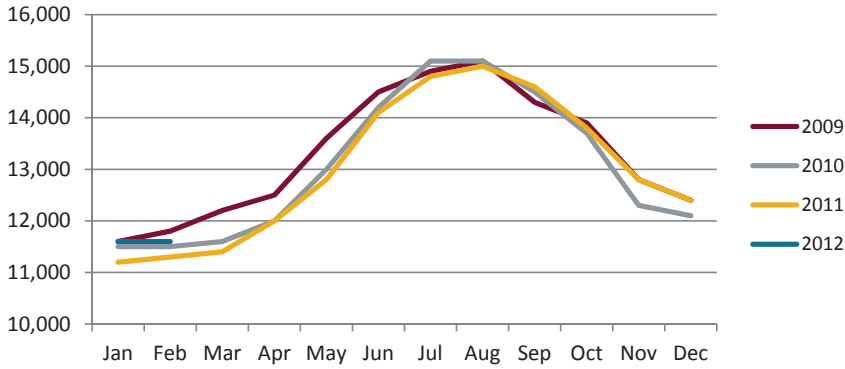
Services producing jobs in Anchorage (engineering, retail, tourism, healthcare, etc.) are up in 2012 compared to 2011 by 1,200 jobs or 0.87 percent. The sectors seeing the most growth are leisure and hospitality (up 550), transportation (up 450) and healthcare (up 700).



Overall, unemployment is averaging **5.9%** in Anchorage for the first 2 months of 2012, which is **0.8%** below 2011 for the same time.

Goods Producing Jobs

Municipality of Anchorage 2008 - Present



Goods Producing Jobs

Goods producing jobs which are construction work, mining and oil & gas production (those jobs that are specifically tied to production, not those that support the production or maintenance of the production jobs) are up 350 jobs or 3.11 percent comparing 2012 to 2011.

Manufacturing, which saw a small growth last year is continuing to see growth in 2012. So far in 2012, manufacturing is up by 250 jobs or 14.29 percent. Construction saw a decrease in 2011, and so far in 2012 its showing signs of another slow year (down 150 jobs or 2.24 percent).

14.29%

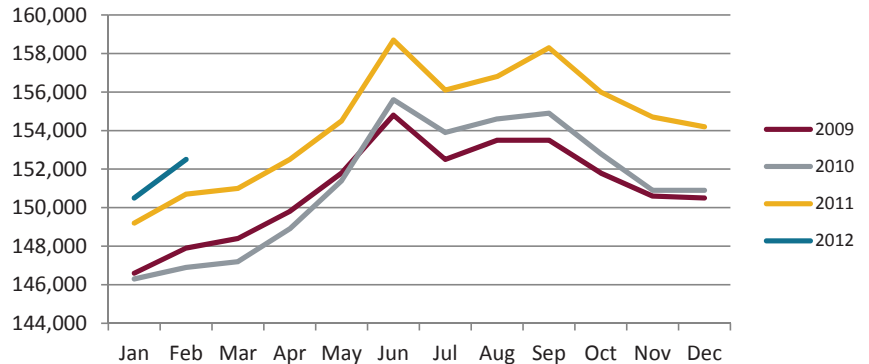
250 More
Manufacturing
Jobs (YTD) in 2012
than 2011

Anchorage Employment

Preliminary numbers for Anchorage's employment show an average increase of 1,550 jobs for 2012 vs. 2011, with a month-to-month (Feb. 12 vs. Feb. 11) comparison showing an increase of 1,800 jobs. This is a strong start to the year and is being fueled by the continued growth from the health care, transportation and leisure and hospitality industries.

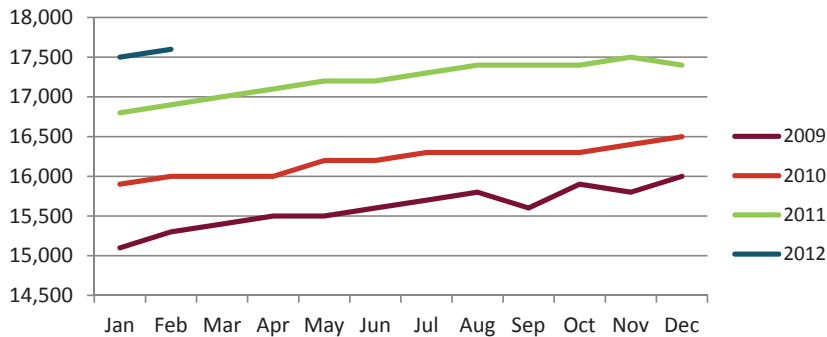
Anchorage Employment

Municipality of Anchorage 2008-Present



Health Care Employment

Municipality of Anchorage 2009-Present



Health Care Employment

In January, AEDC predicted a growth for 2012 of 700 healthcare jobs. So far in 2012, health care is averaging 700 more jobs than the same time in 2011. This is an increase of about 4.1 percent. Health care has been a monster growth sector for Anchorage over the past couple years and hasn't shown signs of slowing yet.

17,600

Health Care Jobs
in Feb 2012

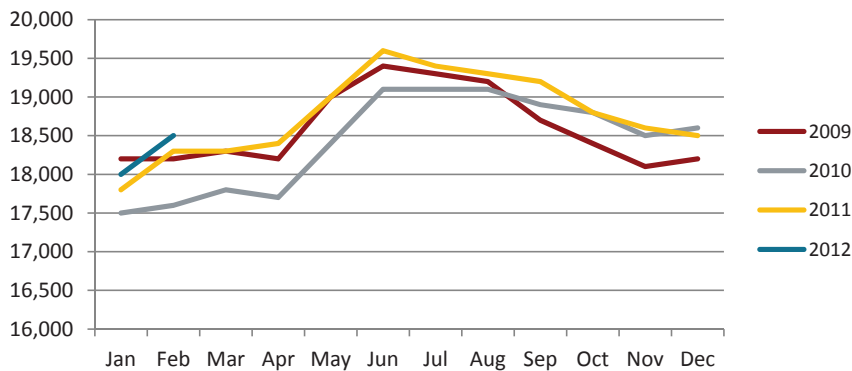
4.15%

increase of about

700 jobs (YTD)
in 2012 vs. 2011

Professional & Business Services

Municipality of Anchorage 2008 - Present



Professional & Business Services

Professional and Business Services are part of the services side of the jobs equation.

(Total jobs = Goods + Services)

In January, AEDC predicted that this sector would grow by 150 jobs. So far 2012 is averaging a growth of about 200 jobs or 1.93 percent.



200

Professional & Business Services Jobs (YTD) in 2012 vs. 2011

Transportation Employment

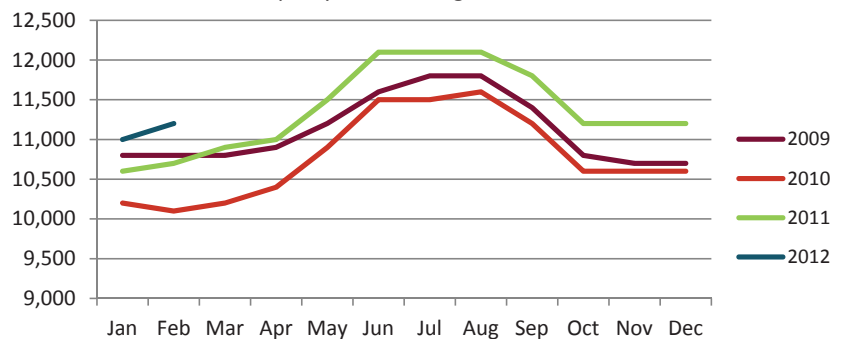
AEDC predicted an increase of 100 jobs in transportation for 2012. The year has started out with a boom averaging about 450 more jobs than in 2011. This is a major growth and could be the subject of a revision later in the year. However, it is very exciting to see this sector off to such a good start considering it has taken some hits in recent years.

11,200

Transportation jobs in February 2012

Transportation Employment

Municipality of Anchorage 2009-Present



increase of about **450** Transportation Jobs (YTD) in 2012 vs. 2011



Unemployment Analysis (Year-To-Date, 2012)

• Anchorage • Mat-Su Borough • Kenai Peninsula Borough •

	Jan revised	Feb revised	Mar revised	Apr revised	May revised	Jun revised	Jul revised	Aug revised	Sep revised	Oct revised	Nov revised	Dec preliminary	12 YTD Avg	11 YTD Avg	12 vs 11
Municipality of Anchorage															
Labor Force	156,853	156,536											156,695	158,062	(1,368)
Employment	147,598	147,199											147,399	147,477	(78)
Unemployment	9,255	9,337											9,296	10,586	(1,290)
Unemployment Rate	5.9%	6.0%											5.9%	6.7%	-0.8%
Mat-Su Borough															
Labor Force	43,471	43,459											43,465	43,883	(418)
Employment	39,238	39,132											39,185	39,206	(21)
Unemployment	4,233	4,327											4,280	4,678	(398)
Unemployment Rate	9.7%	10.0%											9.8%	10.7%	-0.8%
Kenai Peninsula Borough															
Labor Force	27,083	27,175											27,129	26,374	756
Employment	24,324	24,391											24,358	23,239	1,119
Unemployment	2,759	2,784											2,772	3,135	(363)
Unemployment Rate	10.2%	10.2%											10.2%	11.9%	-1.7%
Southcentral Region															
Labor Force	227,407	227,170	-	-	-	-	-	-	-	-	-	-	227,289	228,319	(1,030)
Employment	211,160	210,722	-	-	-	-	-	-	-	-	-	-	210,941	209,921	1,020
Unemployment	16,247	16,448	-	-	-	-	-	-	-	-	-	-	16,348	18,398	(2,050)
Unemployment Rate	7.1%	7.2%											7.2%	8.1%	-0.9%
State of Alaska															
Labor Force	361,764	363,893											362,829	362,572	257
Employment	332,873	334,750											333,812	330,829	2,983
Unemployment	28,891	29,143											29,017	31,743	(2,726)
Unemployment Rate	8.0%	8.0%											8.0%	8.8%	-0.8%

***Note:** These numbers reflect employment, unemployment, etc. for only those people that are residence of the specified City/Region, thus are not inclusive of people who commute to another city for their jobs. (Ex: Someone lives in Wasilla but works in Anchorage. They would be counted in the Mat-Su Borough's labor force and employment numbers, not the Municipality of Anchorage numbers)



Industry Employment Estimates 2012 Municipality of Anchorage

Industry	Jan	Feb	Mar	Apr	May	Jun	Jul	Aug	Sep	Oct	Nov	Dec	2012 YTD Avg.	2011 YTD Avg.	2012 vs 2011 Monthly Avg	% Change
	revised	preliminary														
Total Nonfarm	150,500	152,500											151,500	149,950	1,550	1.03%
Goods Producing	11,600	11,600											11,600	11,250	350	3.11%
Services Providing	138,900	140,900											139,900	138,700	1,200	0.87%
Mining and Logging ²	3,000	3,100											3,050	2,800	250	8.93%
Oil & Gas	2,900	3,000											2,950	2,800	150	5.36%
Construction	6,600	6,500											6,550	6,700	-150	-2.24%
Manufacturing	2,000	2,000											2,000	1,750	250	14.29%
Trade/Transportation/Utilities	32,400	32,300											32,350	31,800	550	1.73%
Wholesale Trade	4,500	4,500											4,500	4,500	0	0.00%
Retail Trade	16,900	16,600											16,750	16,650	100	0.60%
Trans/Warehouse/Utilities	11,000	11,200											11,100	10,650	450	4.23%
Air Transportation	3,000	2,900											2,950	2,800	150	5.36%
Information	3,900	3,900											3,900	4,000	-100	-2.50%
Financial Activities	8,600	8,700											8,650	8,700	-50	-0.57%
Professional & Business Svcs	18,000	18,500											18,250	18,050	200	1.11%
Educational & Health Services	23,600	23,900											23,750	23,100	650	2.81%
Health Care	17,500	17,600											17,550	16,850	700	4.15%
Leisure & Hospitality	16,100	16,300											16,200	15,650	550	3.51%
Accommodation	3,200	3,200											3,200	3,100	100	3.23%
Food Svcs & Drinking Places	10,500	10,600											10,550	10,350	200	1.93%
Other Services	5,700	5,700											5,700	5,700	0	0.00%
Government	30,500	31,700											31,100	31,700	-600	-1.89%
Federal Government	9,400	9,400											9,400	9,500	-100	-1.05%
State Government	10,000	10,900											10,450	10,650	-200	-1.88%
State Education	2,100	2,900											2,500	2,750	-250	-9.09%
Local Government	11,200	11,500											11,350	11,500	-150	-1.30%
Local Education	8,500	8,600											8,550	8,650	-100	-1.16%

- Nonfarm Wage & Salary excludes self-employed workers, fishers, domestics, and unpaid family workers.

- Government includes employees of public school systems and the University of Alaska.

- Beginning January 2001, wage and salary employment estimates were published under a new classification system. The Standard Industrial Classification system (SIC) has been replaced by the North American Industry Classification System (NAICS). Data prior to 2001 are comparable only at the Total Nonfarm and Government levels.

^{1/} As of January 2001, certain federally-recognized tribal entities were moved to Local Government, which created a series break for Total Government and Local Government. [Please see the April 2002 Alaska Economic Trends publication for a detailed explanation.](#)

^{2/} This category was called "Natural Resources and Mining" in previous years. The change is in name only; the industries it includes remain the same.

- Source: Alaska Department of Labor and Workforce Development, Research and Analysis Section

Quick Comparisons		
12 vs 11		
February	1,800	1.19%
12 vs 11		
1st Qtr YTD	3,100	1.03%
12 vs 11		
2nd Qtr	n/a	n/a
12 vs 11 3rd		
Qtr.	n/a	n/a
12 vs 11 4th		
Qtr.	n/a	n/a

* **Note:** The above numbers are representative of all people employed in the Municipality of Anchorage, this is inclusive of workers who claim residence outside of the Municipality of Anchorage. (Ex: someone who lives in the Mat-Su, but works in Anchorage would be included in these number)

Industry Employment Estimates 2012

State of Alaska

Industry	Jan	Feb	Mar	Apr	May	Jun	Jul	Aug	Sep	Oct	Nov	Dec	2012 YTD Avg.	2011 YTD Avg.	2012 vs 2011 Monthly Avg	% Change
	revised	preliminary														
Total Nonfarm	309,200	317,200											313,200	311,600	1,600	0.51%
Goods Producing	36,800	39,000											37,900	38,800	-900	-2.32%
Services Providing	272,400	278,200											275,300	272,800	2,500	0.92%
Mining and Logging ²	15,400	16,100											15,750	15,000	750	5.00%
Mining	15,300	15,800											15,550	14,850	700	4.71%
Oil & Gas	12,800	13,500											13,150	12,550	600	4.78%
Construction	11,600	11,500											11,550	12,400	-850	-6.85%
Manufacturing	9,800	11,400											10,600	11,400	-800	-7.02%
Seafood Processing	7,000	8,500											7,750	8,150	-400	-4.91%
Trade/Transportation/Utilities	59,600	59,500											59,550	58,900	650	1.10%
Wholesale Trade	5,900	6,000											5,950	6,050	-100	-1.65%
Retail Trade	33,900	33,400											33,650	33,800	-150	-0.44%
Food & Beverage Stores	6,100	6,200											6,150	5,900	250	4.24%
General Merchandise Stores	9,800	9,500											9,650	9,650	0	0.00%
Trans/Warehouse/Utilities	19,800	20,100											19,950	19,050	900	4.72%
Air Transportation	5,500	5,300											5,400	5,350	50	0.93%
Information	6,300	6,300											6,300	6,300	0	0.00%
Telecommunications	4,100	4,100											4,100	4,100	0	0.00%
Financial Activities	14,500	14,700											14,600	14,400	200	1.39%
Professional & Business Svcs	25,800	27,200											26,500	25,700	800	3.11%
Educational & Health Services	45,500	46,100											45,800	43,700	2,100	4.81%
Health Care	31,800	32,200											32,000	30,900	1,100	3.56%
Leisure & Hospitality	27,900	28,300											28,100	27,750	350	1.26%
Accommodation	5,700	5,800											5,750	6,100	-350	-5.74%
Food Svcs & Drinking Places	18,200	18,300											18,250	17,950	300	1.67%
Other Services	10,600	10,600											10,600	11,050	-450	-4.07%
Government	82,200	85,500											83,850	85,000	-1,150	-1.35%
Federal Government	15,900	16,000											15,950	16,600	-650	-3.92%
State Government	24,100	26,400											25,250	25,650	-400	-1.56%
State Education	6,500	8,600											7,550	8,050	-500	-6.21%
Local Government	42,200	43,100											42,650	42,750	-100	-0.23%
Local Education	25,200	25,600											25,400	25,450	-50	-0.20%
Tribal Government ¹	3,700	3,700											3,700	3,500	200	5.71%

- Nonfarm Wage & Salary excludes self-employed workers, fishers, domestics, and unpaid family workers.

- Government includes employees of public school systems and the University of Alaska.

- Beginning January 2001, wage and salary employment estimates were published under a new classification system. The Standard Industrial Classification system (SIC) has been replaced by the North American Industry Classification System (NAICS). Data prior to 2001 are comparable only at the Total Nonfarm and Government levels.

^{1/} As of January 2001, certain federally-recognized tribal entities were moved to Local Government, which created a series break for Total Government and Local Government. [Please see the April 2002 Alaska Economic Trends publication for a detailed explanation.](#)

^{2/} This category was called "Natural Resources and Mining" in previous years. The change is in name only; the industries it includes remain the same.

- Source: Alaska Department of Labor and Workforce Development, Research and Analysis Section

Quick Comparisons		
12 vs 11 February	2,800	0.89%
12 vs 11 1st Qtr YTD	3,200	0.51%
12 vs 11 2nd Qtr	N/A	N/A
12 vs 11 3rd Qtr.	N/A	N/A
12 vs 11 4th Qtr	N/A	N/A

Click Bishop
Commissioner

P.O. Box 111149
Juneau, AK 99811-1149
www.labor.alaska.gov



Beth Leschper
Communications Director

907.465.2700
cell: 907.723.1321
beth.leschper@alaska.gov

Press Release

COMMISSIONER'S OFFICE

March 23, 2012

No. 12-19

Unemployment rate at 7.1 percent in February

Alaska's seasonally adjusted unemployment rate was essentially unchanged in February, declining one-tenth of a percentage point to 7.1 percent. The comparable national rate was 8.3 percent, unchanged from its January level.

Both rates have shown a general downward trend since peaking in late 2009. While the U.S. rate remains significantly higher than its 10-year average, Alaska's rate is right at its 10-year average.

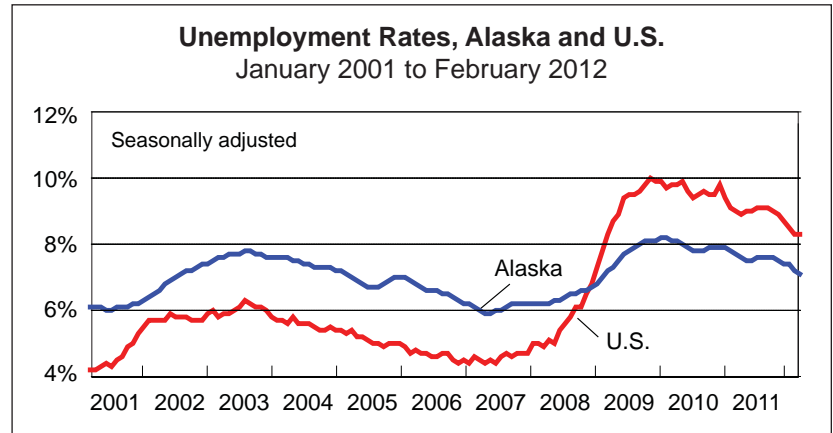
Rates for Alaska's boroughs and census areas — which are not seasonally adjusted — were generally at or near their annual high points in February.

Skagway had the state's highest rate in February at 27.7 percent. The Hoonah-Angoon and Wade Hampton census areas and the Denali Borough also had rates above 20 percent.

The state's lowest jobless rate in February was in the Aleutians West Census Borough at 5.0 percent. Rates were also noticeably lower than average in Anchorage, Juneau, and the North Slope and Kodiak boroughs.

Statewide, 20 boroughs and census areas had unemployment rates of 10 percent or higher and nine had rates in the single digits.

Contact: Alyssa Shanks, Economist (907) 269-4863
Research and Analysis Web site: <http://laborstats.alaska.gov>



Unemployment Rates, Seasonally Adjusted			
	2/12	1/12	2/11
Alaska	7.1%	7.2%	7.7%
U.S.	8.3%	8.3%	9.0%

Sources for graph and table: Alaska Department of Labor and Workforce Development, Research and Analysis Section; and U.S. Bureau of Labor Statistics

Labor Force by Borough and Census Area, Not Seasonally Adjusted¹

	Civilian Labor Force			Unemployed					
	2/12 ^P	1/12	2/11	Number			Rate		
				2/12 ^P	1/12	2/11	2/12 ^P	1/12	2/11
Alaska Statewide	363,893	361,764	362,969	29,143	28,891	31,590	8.0	8.0	8.7
Anchorage/Mat-Su Region	199,995	200,324	201,304	13,664	13,488	15,220	6.8	6.7	7.6
Municipality of Anchorage	156,536	156,853	157,574	9,337	9,255	10,570	6.0	5.9	6.7
Matanuska-Susitna Borough	43,459	43,471	43,730	4,327	4,233	4,650	10.0	9.7	10.6
Gulf Coast Region	39,365	38,797	38,113	3,759	3,762	4,183	9.5	9.7	11.0
Kenai Peninsula Borough	27,175	27,083	26,381	2,784	2,759	3,123	10.2	10.2	11.8
Kodiak Island Borough	7,314	6,937	7,021	416	467	459	5.7	6.7	6.5
Valdez-Cordova Census Area	4,876	4,777	4,711	559	536	601	11.5	11.2	12.8
Interior Region	54,035	53,023	53,599	4,585	4,554	4,771	8.5	8.6	8.9
Denali Borough	882	857	854	190	185	177	21.5	21.6	20.7
Fairbanks North Star Borough	46,543	45,590	46,182	3,398	3,382	3,541	7.3	7.4	7.7
Southeast Fairbanks Census Area	3,517	3,537	3,502	444	443	476	12.6	12.5	13.6
Yukon-Koyukuk Census Area	3,093	3,039	3,061	553	544	577	17.9	17.9	18.9
Northern Region	13,195	13,232	12,725	1,317	1,268	1,328	10.0	9.6	10.4
Nome Census Area	4,312	4,354	4,201	511	501	548	11.9	11.5	13.0
North Slope Borough	5,739	5,661	5,495	313	292	293	5.5	5.2	5.3
Northwest Arctic Borough	3,144	3,217	3,029	493	475	487	15.7	14.8	16.1
Southeast Region	37,956	37,828	37,782	3,329	3,292	3,574	8.8	8.7	9.5
Haines Borough	1,099	1,051	1,103	140	131	145	12.7	12.5	13.1
Hoonah-Angoon Census Area	806	815	821	211	214	233	26.2	26.3	28.4
Juneau, City and Borough of	18,435	18,589	18,337	1,013	999	1,136	5.5	5.4	6.2
Ketchikan Gateway Borough	7,493	7,499	7,437	686	670	715	9.2	8.9	9.6
Petersburg Census Area	1,592	1,554	1,602	207	222	233	13.0	14.3	14.5
Prince of Wales-Hyder Census Area	2,391	2,290	2,382	468	441	481	19.6	19.3	20.2
Sitka, City and Borough of	4,345	4,255	4,323	300	299	327	6.9	7.0	7.6
Skagway, Municipality of	527	537	533	146	152	157	27.7	28.3	29.5
Wrangell, City and Borough of	1,015	990	993	119	129	107	11.7	13.0	10.8
Yakutat, City and Borough of	253	248	251	39	35	40	15.4	14.1	15.9
Southwest Region	19,350	18,561	19,445	2,491	2,527	2,513	12.9	13.6	12.9
Aleutians East Borough	1,322	1,349	1,299	127	159	101	9.6	11.8	7.8
Aleutians West Census Area	4,396	3,766	4,376	219	287	184	5.0	7.6	4.2
Bethel Census Area	7,292	7,289	7,361	1,140	1,116	1,175	15.6	15.3	16.0
Bristol Bay Borough	443	455	449	51	52	55	11.5	11.4	12.2
Dillingham Census Area	2,094	2,002	2,127	225	215	249	10.7	10.7	11.7
Lake and Peninsula Borough	916	914	926	111	106	120	12.1	11.6	13.0
Wade Hampton Census Area	2,887	2,786	2,907	618	592	629	21.4	21.2	21.6

P = Preliminary. As more information becomes available, data are revised every month for the previous month and again at the end of every calendar year.

Note: The official definition of unemployment excludes anyone who has not made an active attempt to find work in the four-week period up to and including the week that includes the 12th of the reference month. Many in rural Alaska do not meet the definition because they have not conducted an active job search due to the scarcity of employment opportunities.

¹Unemployment rates that are not seasonally adjusted should not be compared with those that are.

Source: Alaska Department of Labor and Workforce Development, Research and Analysis Section; and U.S. Bureau of Labor Statistics