

AEDC May 2012 Employment Report

ANCHORAGE

5.8% **2012 YTD**
Unemployment Rate

5.7% **May 2012**
Unemployment Rate

1,440 Average increase of jobs (YTD) for 2012 vs. 2011

0.91% **1,400** Increase of jobs for May '12 vs. May '11

577 Average less workers (YTD) in 2012 than 2011

Total Jobs = Goods + Service

1.02% **1,420** More Services Producing Jobs (YTD) in 2012 than 2011

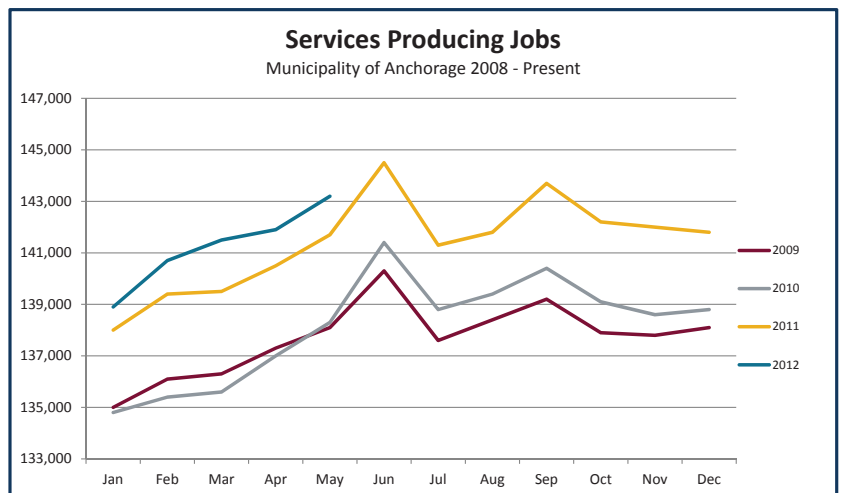
0.51% **60** Goods Producing Jobs (YTD) in 2012 than 2011

Executive Summary

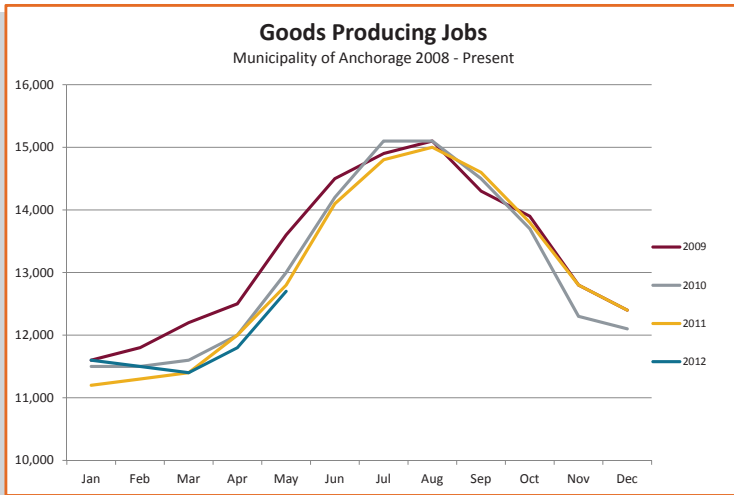
The unemployment rate in Anchorage is averaging 5.8 percent so far in 2012. This is 0.4 percentage points less than the same time last year. While this is a slight increase from last month's rate, unemployment is down 0.2 percent for the year. Anchorage's labor force has remained virtually unchanged since April and is down about 577 YTD compared to 2011.

Services Producing Jobs

Services producing jobs in Anchorage (engineering, retail, tourism, healthcare, etc.) are still making gains on 2012 levels and have risen by 1,420 jobs or 1.02 percent. The healthcare sector is still leading the growth, adding 540 jobs, with transportation (up 380), professional and business services (up 300) and food services (up 220) also showing gains. Other than government based jobs, the information sector is the only service industry showing significant job losses for the year to date (down 100).



Overall, unemployment is averaging **5.8%** in Anchorage for the first 5 months of 2012, which is **0.7%** below 2011 for the same time.



Goods Producing Jobs

Goods producing jobs which are construction work, mining and oil & gas production (those jobs that are specifically tied to production, not those that support the production or maintenance of the production jobs) are up slightly by 60 jobs or 0.51 percent comparing 2012 to 2011 YTD. Manufacturing, which saw a small growth last year, is continuing to see growth in 2012. So far in 2012, manufacturing is up by 200 jobs or 11.11 percent. Construction saw a decrease in 2011 from 2010, and so far in 2012 its showing signs (down 300 jobs or 4.24 percent) of another slow year.

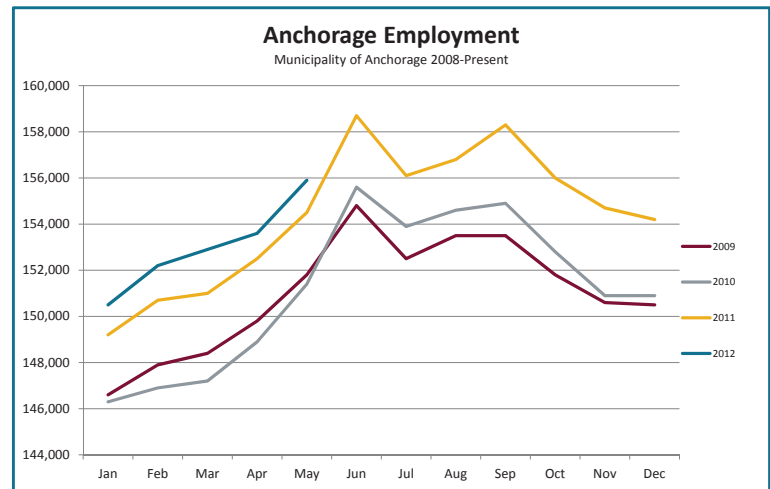


200

More Manufacturing Jobs (YTD) in 2012 than 2011

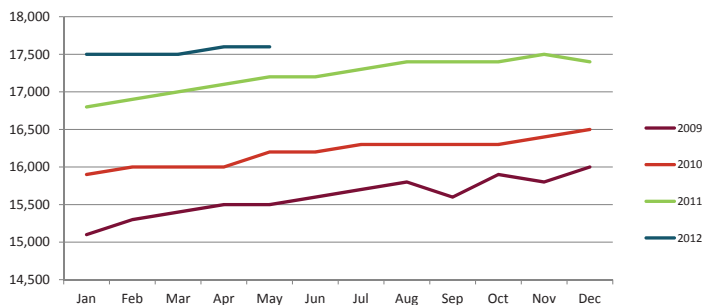
Anchorage Employment

Preliminary numbers for Anchorage's employment show an average increase of 1,440 jobs for 2012 vs. 2011, with a month-to-month (May '12 vs. May '11) comparison showing an increase of 1,400 jobs. This is a strong start to the year and is being fueled by the continued growth from the health care, transportation and leisure and hospitality industries.



Health Care Employment

Municipality of Anchorage 2009-Present



Health Care Employment

In January, AEDC predicted a growth for 2012 of 700 healthcare jobs. So far in 2012 health care is averaging 540 more jobs than the same time in 2011. This is an increase of about 3.18 percent. The healthcare sector has avoided job losses since late 2009, and all indications point to continuing growth.

17,600

Health Care Jobs in May 2012



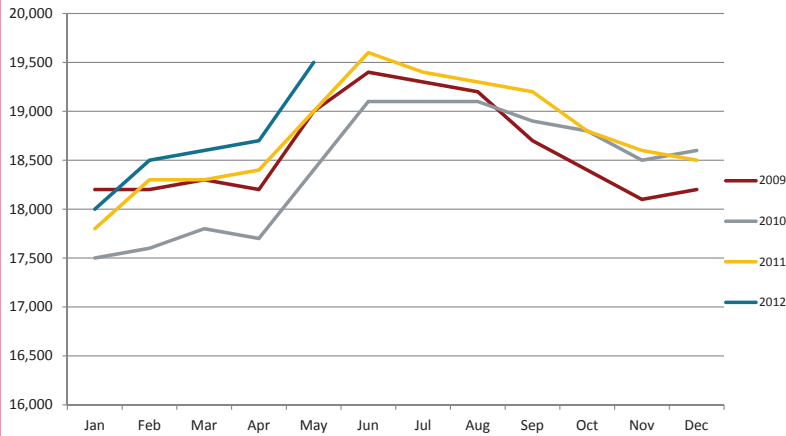
increase of about

3.18%

540 jobs (YTD) in 2012 vs. 2011

Professional & Business Services

Municipality of Anchorage 2008 - Present



Professional & Business Services

are part of the services side of the jobs equation.

(Total jobs = Goods + Services)

In January, AEDC predicted that this sector would grow by 150 jobs. So far, 2012 is averaging a growth of about 300 jobs or 1.63 percent.



300

Professional & Business Services Jobs (YTD) in 2012 vs. 2011

Transportation

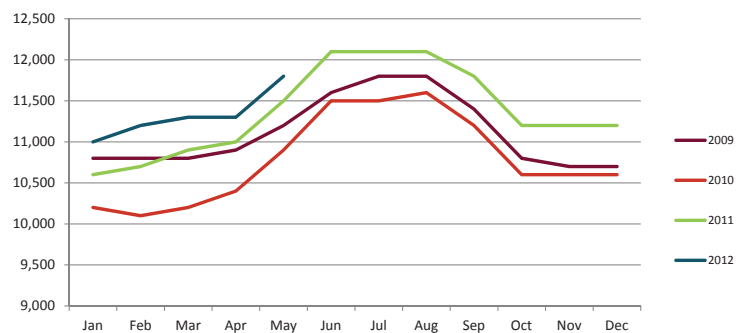
AEDC predicted an increase of 100 jobs in transportation for 2012. The year has started out strong, with a YTD average of 380 more jobs than in 2011, and May's total is just 300 jobs short of June 2011's high mark of 12,100.

11,320

Transportation Jobs in May 2012

Transportation Employment

Municipality of Anchorage 2009-Present



increase of about

380

Transportation Jobs (YTD) in 2012 vs. 2011



Unemployment Analysis (Year-To-Date, 2012)

• Anchorage • Mat-Su Borough • Kenai Peninsula Borough •

	Jan revised	Feb revised	Mar revised	Apr revised	May revised	Jun revised	Jul revised	Aug revised	Sep revised	Oct revised	Nov revised	Dec preliminary	12 YTD Avg	11 YTD Avg	12 vs 11
Municipality of Anchorage															
Labor Force	156853	156529	156685	155981	155989								156,407	156,984	(577)
Employment	147598	147299	147441	147172	147037								147,309	146,816	493
Unemployment	9255	9230	9244	8809	8952								9,098	10,168	(1,070)
Unemployment Rate	5.9%	5.9%	5.9%	5.6%	5.7%								5.8%	6.5%	-0.7%
Mat-Su Borough															
Labor Force	43471	43437	43434	42783	42500								43,125	43,293	(168)
Employment	39238	39158	39196	39125	39089								39,161	39,030	131
Unemployment	4233	4279	4238	3658	3411								3,964	4,263	(299)
Unemployment Rate	9.7%	9.9%	9.8%	8.6%	8.0%								9.2%	9.8%	-0.7%
Kenai Peninsula Borough															
Labor Force	27083	26863	27259	27088	28307								27,320	26,909	411
Employment	24324	24110	24591	24709	26008								24,748	24,051	698
Unemployment	2759	2753	2668	2379	2299								2,572	2,859	(287)
Unemployment Rate	10.2%	10.2%	9.8%	8.8%	8.1%								9.4%	10.6%	-1.2%
Southcentral Region															
Labor Force	227,407	226,829	227,378	225,852	226,796	-	-	-	-	-	-	-	226,852	227,186	(334)
Employment	211,160	210,567	211,228	211,006	212,134	-	-	-	-	-	-	-	211,219	209,897	1,322
Unemployment	16,247	16,262	16,150	14,846	14,662	-	-	-	-	-	-	-	15,633	17,289	(1,656)
Unemployment Rate	7.1%	7.2%	7.1%	6.6%	6.5%								6.9%	7.6%	-0.7%
State of Alaska															
Labor Force	361764	363359	364856	362887	367076								363,988	363,587	401
Employment	332873	334539	336373	336640	341069								336,299	333,867	2,432
Unemployment	28891	28820	28483	26247	26007								27,690	29,720	(2,031)
Unemployment Rate	8.0%	7.9%	7.8%	7.2%	7.1%								7.6%	8.2%	-0.6%

***Note:** These numbers reflect employment, unemployment, etc. for only those people that are residence of the specified City/Region, thus are not inclusive of people who commute to another city for their jobs.
 (Ex: Someone lives in Wasilla but works in Anchorage. They would be counted in the Mat-Su Borough's labor force and employment numbers, not the Municipality of Anchorage numbers)



Industry Employment Estimates 2012 Municipality of Anchorage

Industry	Jan	Feb	Mar	Apr	May	Jun	Jul	Aug	Sep	Oct	Nov	Dec	2012 YTD Avg.	2011 YTD Avg.	2012 vs 2011 YTD Change	% Change
	revised	revised	revised	revised	preliminary											
Total Nonfarm	150,500	152,200	152,900	153,600	155,900								153,020	151,580	1,440	0.95%
Goods Producing	11,600	11,500	11,400	11,800	12,700								11,800	11,740	60	0.51%
Services Providing	138,900	140,700	141,500	141,900	143,200								141,240	139,820	1,420	1.02%
Mining and Logging ²	3,000	3,000	3,000	3,000	3,000								3,000	2,860	140	4.90%
Oil & Gas	2,900	2,900	2,900	2,900	2,900								2,900	2,760	140	5.07%
Construction	6,600	6,400	6,500	6,800	7,600								6,780	7,080	-300	-4.24%
Manufacturing	2,000	2,000	1,900	2,000	2,100								2,000	1,800	200	11.11%
Trade/Transportation/Utilities	32,400	32,300	32,500	32,800	33,800								32,760	32,160	600	1.87%
Wholesale Trade	4,500	4,400	4,500	4,500	4,600								4,500	4,520	-20	-0.44%
Retail Trade	16,900	16,700	16,700	17,000	17,400								16,940	16,720	220	1.32%
Trans/Warehouse/Utilities	11,000	11,200	11,300	11,300	11,800								11,320	10,940	380	3.47%
Air Transportation	3,000	2,900	3,000	3,000	3,100								3,000	2,880	120	4.17%
Information	3,900	3,900	3,900	3,900	3,900								3,900	4,000	-100	-2.50%
Financial Activities	8,600	8,700	8,800	8,800	8,900								8,760	8,780	-20	-0.23%
Professional & Business Svcs	18,000	18,500	18,600	18,700	19,500								18,660	18,360	300	1.63%
Educational & Health Services	23,600	23,800	23,900	23,800	23,900								23,800	23,220	580	2.50%
Health Care	17,500	17,500	17,500	17,600	17,600								17,540	17,000	540	3.18%
Leisure & Hospitality	16,100	16,200	16,500	16,400	16,700								16,380	16,020	360	2.25%
Accommodation	3,200	3,200	3,200	3,100	3,100								3,160	3,120	40	1.28%
Food Svcs & Drinking Places	10,500	10,600	10,800	11,000	11,300								10,840	10,620	220	2.07%
Other Services	5,700	5,700	5,800	5,900	6,000								5,820	5,760	60	1.04%
Government	30,500	31,600	31,600	31,600	30,500								31,160	31,560	-400	-1.27%
Federal Government	9,400	9,400	9,400	9,300	9,400								9,380	9,500	-120	-1.26%
State Government	10,000	10,900	10,900	10,900	10,200								10,580	10,620	-40	-0.38%
State Education	2,100	2,900	2,900	2,900	2,200								2,600	2,660	-60	-2.26%
Local Government	11,200	11,300	11,300	11,400	10,900								11,220	11,400	-180	-1.58%
Local Education	8,500	8,500	8,500	8,500	8,100								8,420	8,520	-100	-1.17%

- Nonfarm Wage & Salary excludes self-employed workers, fishers, domestics, and unpaid family workers.

- Government includes employees of public school systems and the University of Alaska.

- Beginning January 2001, wage and salary employment estimates were published under a new classification system. The Standard Industrial Classification system (SIC) has been replaced by the North American Industry Classification System (NAICS). Data prior to 2001 are comparable only at the Total Nonfarm and Government levels.

^{1/} As of January 2001, certain federally-recognized tribal entities were moved to Local Government, which created a series break for Total Government and Local Government. [Please see the April 2002 Alaska Economic Trends publication for a detailed explanation.](#)

^{2/} This category was called "Natural Resources and Mining" in previous years. The change is in name only; the industries it includes remain the same.

- Source: Alaska Department of Labor and Workforce Development, Research and Analysis Section

Quick Comparisons		
12 vs 11 May	1,400	0.91%
12 vs 11 1st Qtr	1,567	0.95%
12 vs 11 2nd Qtr	n/a	n/a
12 vs 11 3rd Qtr.	n/a	n/a
12 vs 11 4th Qtr.	n/a	n/a

* **Note:** The above numbers are representative of all people employed in the Municipality of Anchorage, this is inclusive of workers who claim residence outside of the Municipality of Anchorage. (Ex: someone who lives in the Mat-Su, but works in Anchorage would be included in these number)



Industry Employment Estimates 2012 State of Alaska

Industry	Jan	Feb	Mar	Apr	May	Jun	Jul	Aug	Sep	Oct	Nov	Dec	2012 YTD Avg.	2011 YTD Avg.	2012 vs 2011 YTD Change	% Change
	revised	revised	revised	revised	preliminary											
Total Nonfarm	309,200	317,100	319,900	321,100	328,600								319,180	318,340	840	0.26%
Goods Producing	36,800	38,900	39,700	38,700	39,700								38,760	40,440	-1,680	-4.15%
Services Providing	272,400	278,200	280,200	282,400	288,900								280,420	277,900	2,520	0.91%
Mining and Logging ²	15,400	16,000	16,100	16,300	16,600								16,080	15,320	760	4.96%
Mining	15,300	15,700	15,800	15,900	16,100								15,760	15,060	700	4.65%
Oil & Gas	12,800	13,200	13,200	13,200	13,200								13,120	12,620	500	3.96%
Construction	11,600	11,500	11,400	11,600	13,100								11,840	13,540	-1,700	-12.56%
Manufacturing	9,800	11,400	12,200	10,800	10,000								10,840	11,580	-740	-6.39%
Seafood Processing	7,000	8,600	8,900	7,600	6,600								7,740	8,200	-460	-5.61%
Trade/Transportation/Utilities	59,600	59,700	60,300	61,800	65,400								61,360	60,700	660	1.09%
Wholesale Trade	5,900	6,000	6,000	6,000	6,100								6,000	6,120	-120	-1.96%
Retail Trade	33,900	33,500	33,600	34,700	36,300								34,400	34,420	-20	-0.06%
Food & Beverage Stores	6,100	6,200	6,100	6,300	6,400								6,220	6,000	220	3.67%
General Merchandise Stores	9,800	9,500	9,400	9,600	10,100								9,680	9,660	20	0.21%
Trans/Warehouse/Utilities	19,800	20,200	20,700	21,100	23,000								20,960	20,160	800	3.97%
Air Transportation	5,500	5,400	5,500	5,600	6,000								5,600	5,560	40	0.72%
Information	6,300	6,300	6,300	6,300	6,400								6,320	6,340	-20	-0.32%
Telecommunications	4,100	4,100	4,100	4,100	4,100								4,100	4,100	0	0.00%
Financial Activities	14,500	14,700	14,600	14,500	14,500								14,560	14,520	40	0.28%
Professional & Business Svcs	25,800	27,100	27,200	27,300	27,800								27,040	26,240	800	3.05%
Educational & Health Services	45,500	45,900	46,200	46,400	46,400								46,080	44,040	2,040	4.63%
Health Care	31,800	32,100	32,000	32,300	32,200								32,080	31,140	940	3.02%
Leisure & Hospitality	27,900	28,300	28,900	29,400	33,100								29,520	29,500	20	0.07%
Accommodation	5,700	5,800	6,100	6,200	7,000								6,160	6,580	-420	-6.38%
Food Svcs & Drinking Places	18,200	18,300	18,500	18,800	20,900								18,940	18,800	140	0.74%
Other Services	10,600	10,700	10,900	10,900	11,100								10,840	11,200	-360	-3.21%
Government	82,200	85,500	85,800	85,800	84,200								84,700	85,360	-660	-0.77%
Federal Government	15,900	16,000	16,100	16,200	16,700								16,180	16,840	-660	-3.92%
State Government	24,100	26,400	26,500	26,600	25,700								25,860	25,940	-80	-0.31%
State Education	6,500	8,600	8,600	8,600	7,400								7,940	8,060	-120	-1.49%
Local Government	42,200	43,100	43,200	43,000	41,800								42,660	42,580	80	0.19%
Local Education	25,200	25,600	25,700	25,800	24,000								25,260	25,300	-40	-0.16%
Tribal Government ¹	3,700	3,700	3,700	3,800	3,800								3,740	3,560	180	5.06%

- Nonfarm Wage & Salary excludes self-employed workers, fishers, domestics, and unpaid family workers.

- Government includes employees of public school systems and the University of Alaska.

- Beginning January 2001, wage and salary employment estimates were published under a new classification system. The Standard Industrial Classification system (SIC) has been replaced by the North American Industry Classification System (NAICS). Data prior to 2001 are comparable only at the Total Nonfarm and Government levels.

^{1/} As of January 2001, certain federally-recognized tribal entities were moved to Local Government, which created a series break for Total Government and Local Government. [Please see the April 2002 Alaska Economic Trends publication for a detailed explanation.](#)

^{2/} This category was called "Natural Resources and Mining" in previous years. The change is in name only; the industries it includes remain the same.

- Source: Alaska Department of Labor and Workforce Development, Research and Analysis Section

Quick Comparisons		
12 vs 11		
May	-1,700	-0.51%
12 vs 11		
1st Qtr	6,200	2.01%
12 vs 11		
2nd Qtr	N/A	N/A
12 vs 11 3rd		
Qtr.	N/A	N/A
12 vs 11		
4th Qtr	N/A	N/A

Dianne Blumer
Commissioner
P.O. Box 111149
Juneau, AK 99811-1149
www.labor.alaska.gov



Beth Leschper
Communications Director
907.465.2700
cell: 907.723.1321
beth.leschper@alaska.gov

Press Release

COMMISSIONER'S OFFICE

June 15, 2012

No. 12-38

Unemployment rate at 7.0 percent in May

Alaska's seasonally adjusted unemployment rate for May was 7.0 percent, and the national rate was 8.2 percent. Both rates were essentially unchanged from April, up one-tenth of a percentage point.

The rates for both Alaska and the U.S. remain well below their year-ago levels. Alaska's rate is also below its historical average, and it remains lower than the rates in most states. In April (the most recent month available for all states), 28 states had higher rates, 19 had lower rates and two were the same as Alaska. State rates ranged from a low of 3.0 percent in North Dakota to a high of 11.7 percent in Nevada.

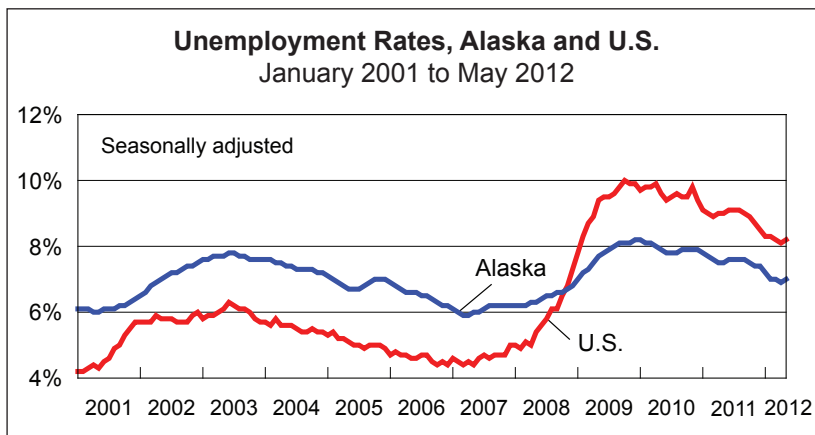
Alaska was one of only seven states that had more jobs in April than in December 2007, the start of the recent recession. Nationally, the job count is still 5 million lower than it was in 2007.

Regional rates, which are not seasonally adjusted, were down in four of six regions. This is typical in May as seasonal work picks up. Two examples are Skagway and the Denali Borough — both major tourist destinations and homes to national parks. Skagway had one of the state's highest unemployment rates in April at 15.4 percent, and then one of the lowest in May at 3.6 percent. Denali's rate dropped from 16.2 percent in April to 7.6 percent in May.

The highest jobless rate was 21.8 percent in the Wade Hampton Census Area, which tends to have high unemployment year-round.

Contact: Neal Fried, Economist
(907) 269-4861

Research and Analysis Web site: laborstats.alaska.gov



Unemployment Rates, Seasonally Adjusted			
	5/12	4/12	5/11
Alaska	7.0%	6.9%	7.5%
U.S.	8.2%	8.1%	9.0%

Sources for graph and table: Alaska Department of Labor and Workforce Development, Research and Analysis Section; and U.S. Bureau of Labor Statistics

For detailed employment estimates, see labor.alaska.gov/research/ces/ces.htm. The estimates are preliminary and subject to potentially large revisions.

Labor Force by Borough and Census Area, Not Seasonally Adjusted¹

	Civilian Labor Force			Unemployed					
	5/12 ^P	4/12	5/11	Number			Rate		
				5/12 ^P	4/12	5/11	5/12 ^P	4/12	5/11
Alaska Statewide	367,076	362,887	366,935	26,007	26,247	26,841	7.1	7.2	7.3
Anchorage/Mat-Su Region	198,489	198,764	199,674	12,363	12,467	13,158	6.2	6.3	6.6
Municipality of Anchorage	155,989	155,981	156,919	8,952	8,809	9,574	5.7	5.6	6.1
Matanuska-Susitna Borough	42,500	42,783	42,755	3,411	3,658	3,584	8.0	8.6	8.4
Gulf Coast Region	40,420	39,091	39,649	3,146	3,251	3,316	7.8	8.3	8.4
Kenai Peninsula Borough	28,307	27,088	27,736	2,299	2,379	2,415	8.1	8.8	8.7
Kodiak Island Borough	6,677	7,000	6,617	394	403	465	5.9	5.8	7.0
Valdez-Cordova Census Area	5,436	5,003	5,296	453	469	436	8.3	9.4	8.2
Interior Region	55,593	54,703	56,278	3,932	4,079	3,969	7.1	7.5	7.1
Denali Borough	1,679	938	1,580	128	152	109	7.6	16.2	6.9
Fairbanks North Star Borough	46,792	46,892	47,933	2,946	3,032	3,017	6.3	6.5	6.3
Southeast Fairbanks Census Area	3,765	3,589	3,588	363	389	364	9.6	10.8	10.1
Yukon-Koyukuk Census Area	3,357	3,284	3,177	495	506	479	14.7	15.4	15.1
Northern Region	13,039	13,093	12,464	1,299	1,251	1,227	10.0	9.6	9.8
Nome Census Area	4,249	4,226	4,096	508	480	510	12.0	11.4	12.5
North Slope Borough	5,559	5,646	5,308	297	282	275	5.3	5.0	5.2
Northwest Arctic Borough	3,231	3,221	3,060	494	489	442	15.3	15.2	14.4
Southeast Region	42,063	39,258	41,462	2,620	2,732	2,714	6.2	7.0	6.5
Haines Borough	1,418	1,277	1,397	99	117	101	7.0	9.2	7.2
Hoonah-Angoon Census Area	1,362	932	1,336	185	184	180	13.6	19.7	13.5
Juneau, City and Borough of	19,348	18,703	19,094	872	894	946	4.5	4.8	5.0
Ketchikan Gateway Borough	8,710	7,788	8,593	547	559	577	6.3	7.2	6.7
Petersburg Census Area	1,755	1,631	1,703	184	152	159	10.5	9.3	9.3
Prince of Wales-Hyder Census Area	2,513	2,411	2,477	332	359	334	13.2	14.9	13.5
Sitka, City and Borough of	4,754	4,586	4,678	270	252	270	5.7	5.5	5.8
Skagway, Municipality of	782	566	776	28	87	35	3.6	15.4	4.5
Wrangell, City and Borough of	1,092	1,057	1,080	76	101	82	7.0	9.6	7.6
Yakutat, City and Borough of	329	307	328	27	27	30	8.2	8.8	9.1
Southwest Region	17,472	17,985	17,405	2,647	2,470	2,457	15.1	13.7	14.1
Aleutians East Borough	860	1,444	837	184	133	157	21.4	9.2	18.8
Aleutians West Census Area	2,389	2,990	2,341	394	306	326	16.5	10.2	13.9
Bethel Census Area	6,954	7,084	6,982	1,085	1,068	1,072	15.6	15.1	15.4
Bristol Bay Borough	1,100	722	1,105	45	52	37	4.1	7.2	3.3
Dillingham Census Area	2,099	1,889	2,117	218	208	219	10.4	11.0	10.3
Lake and Peninsula Borough	1,198	1,013	1,207	96	100	93	8.0	9.9	7.7
Wade Hampton Census Area	2,872	2,843	2,816	625	603	553	21.8	21.2	19.6

P = Preliminary. As more information becomes available, data are revised every month for the previous month and again at the end of every calendar year.

Note: The official definition of unemployment excludes anyone who has not made an active attempt to find work in the four-week period up to and including the week that includes the 12th of the reference month. Many in rural Alaska do not meet the definition because they have not conducted an active job search due to the scarcity of employment opportunities.

¹Unemployment rates that are not seasonally adjusted should not be compared with those that are.

Source: Alaska Department of Labor and Workforce Development, Research and Analysis Section; and U.S. Bureau of Labor Statistics