



October 2012 Employment Report

ANCHORAGE

5.7% 2012 YTD
Unemployment Rate

4.7% October 2012
Unemployment Rate

YTD Labor Force Components

291 MORE
employed people
+

630 FEWER
people in labor force

921 FEWER
unemployed people

1,680 Avg. INCREASE
of jobs (YTD) for
2012 vs. 2011

1.33% **2,100** INCREASE
of jobs for Oct. '12 vs.
Oct. '11

Total Jobs = Goods + Services

0.97% **1,370**
More Services Producing
Jobs (YTD) in 2012
than 2011

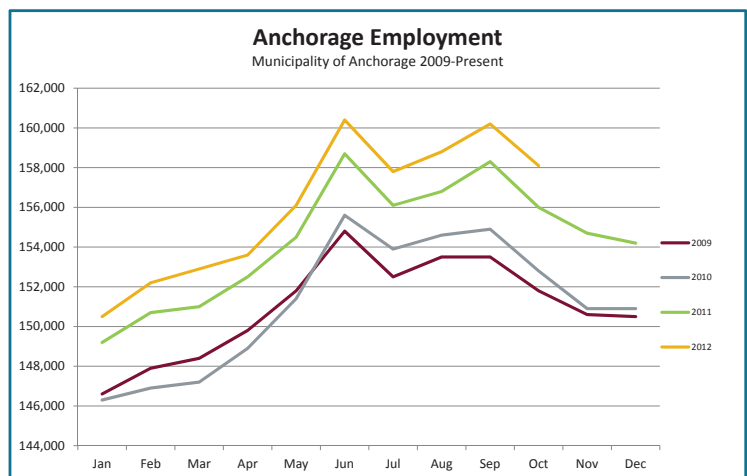
2.44% **320**
More Goods Producing
Jobs (YTD) in 2012
than 2011

Executive Summary

The unemployment rate for Anchorage in October was 4.7 percent, the lowest monthly rate recorded since November, 2007. The year-to-date (YTD) non-seasonally adjusted unemployment rate in Anchorage is down 0.1 percent from September, averaging 5.7 percent. This is 0.6 percent lower than the 2011 YTD average. The monthly rate has gone down 0.5 percent from September, and 0.9 percent from October 2011. The monthly unemployment rate has dropped 0.6 percent since the beginning of the year. The increase of 291 in the employment total during the YTD period is primarily attributed to a reduction of 921 in the unemployment total, but also encompasses a 630 person decrease in the Anchorage labor force.

It is important to note that these unemployment numbers represent the labor force residing in Anchorage, and do not include jobs in Anchorage held by residents from outside the municipality. The industry employment estimates referenced in the remainder of this report are representative of all jobs in the Municipality of Anchorage, regardless of the job holder's place of residency.

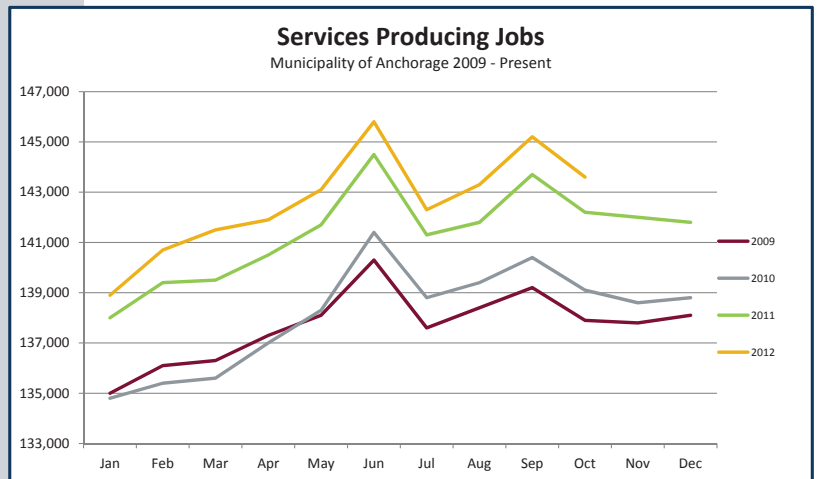
As for the Anchorage Industry Employment estimates, the YTD average has maintained its upwards momentum and has a total increase of 1,680 over 2011 YTD. Industries showing the most improved YTD growth rates from September to October include educational & health services, professional & business services and leisure & hospitality. Seven of the ten major sector's October 2012 averages are at or above October 2011s, indicating sustained growth in many fields.



Overall, unemployment is averaging **5.7%** in Anchorage for the first 10 months of 2012, which is **0.6%** below 2011 for the same time.

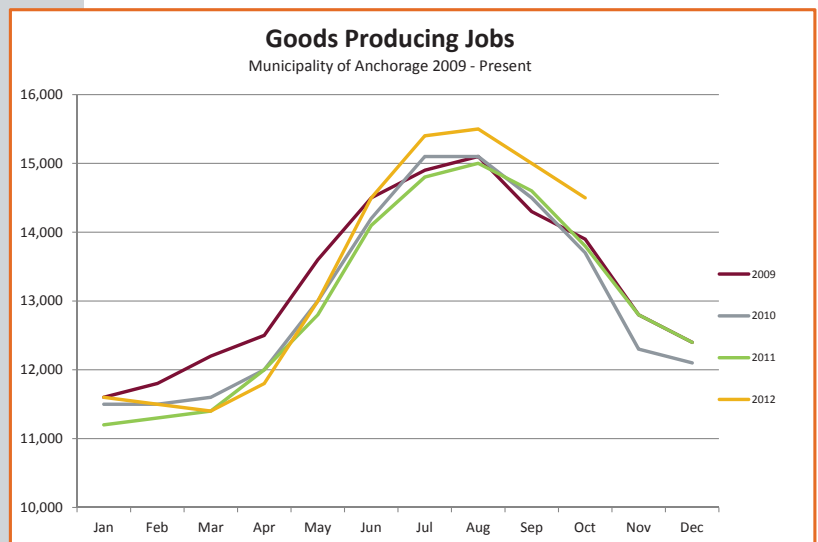
Services Producing Jobs

Services producing jobs in Anchorage (engineering, retail, tourism, healthcare, etc.) totaled 143,600 for October. The educational and health services sector's growth rate continues to improve with a 3.13 percent YTD growth (+730 jobs). YTD job averages for many other service industries are also staying positive, including transportation (+250), professional & business services (+480) and food services (+300). A positive 2012 Q3 Anchorage Consumer Optimism index may be indicative of an strong upcoming holiday retail season which will help bolster seasonal retail sales jobs. The services sector may still achieve a 1 percent gain in total jobs by the end of the year.

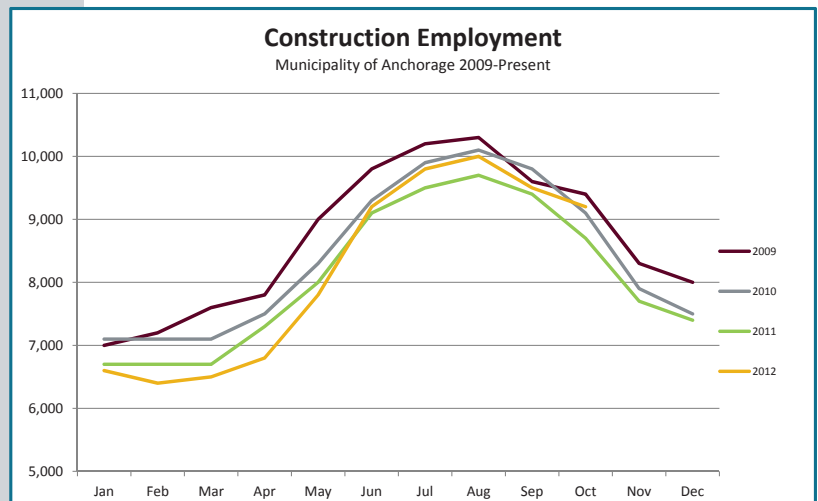


Goods Producing Jobs

Goods producing jobs (construction work, mining, oil and gas production - jobs that are specifically tied to production, not supporting the production or maintenance of production jobs) are still growing. This sector is averaging 320 more jobs in 2012 YTD over the same period in 2011. Total construction jobs in October 2012 are higher than October 2011's count by 500. If the sector averages 7,700 total jobs per month for the next two months, the construction sector will see little to no change in the annual average from 2011. Given the current employment trends in this sector, it is highly likely that the year-end result will be positive growth in construction jobs. The oil and gas and manufacturing sectors are continuing to show strong positive growth with YTD increases of 3.56 percent and 10.2 percent, respectively.

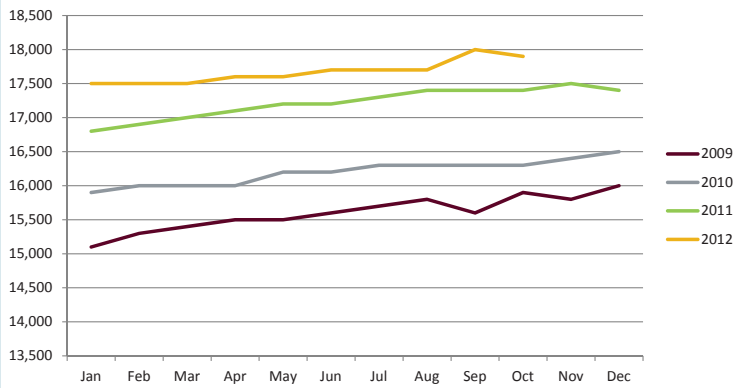


10.20% **200** More Manufacturing Jobs (YTD) in 2012 than 2011



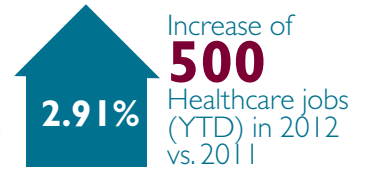
Health Care Employment

Municipality of Anchorage 2009-Present



Health Care Employment

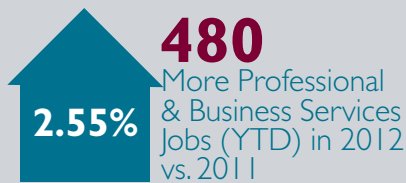
In January, AEDC predicted a growth for 2012 of 700 health care jobs. So far this year, the health care industry is averaging 500 more jobs than 2011s YTD, for a 2.91 percent increase. This is below the 4.02 percent rate of growth needed to reach the



AEDC's predicted mark by the end of the year, but higher than the national average of 1.9 percent growth. Current employment trends indicate a continuation of this rate of growth through the end of the year. Opportunities for increased employment are available in this sector, with over 250 open positions listed at Providence Medical Center and Alaska Regional hospital alone.

Professional & Business Services

Jobs in this sector include those in engineering, architecture, legal services, accounting, scientific research, waste management and administrative services industries.

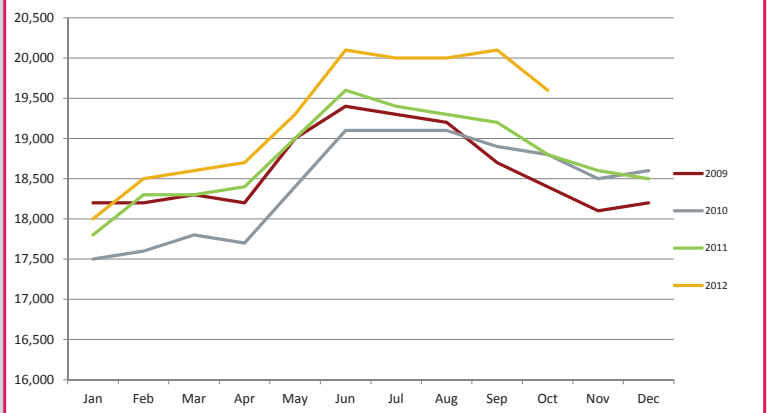


The YTD average is up 480 jobs from 2011 and the sector's growth rate has

increased by a quarter percentage point since September. Job creation in this sector is more than three times the AEDC's January prediction of a gain of 150 jobs and shows no signs of contraction.

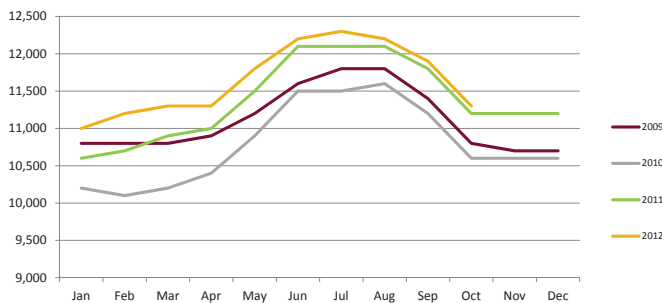
Professional & Business Services

Municipality of Anchorage 2009 - Present



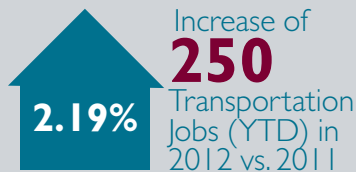
Transportation Employment

Municipality of Anchorage 2009-Present



Transportation

October's estimate (11,300) continues to illustrate this industry's strong year. The 250 job increase in 2012 vs. 2011 YTD is well above the AEDC predicted growth of 100 jobs. Preliminary figures from the Alaska Travel Industry Association show an increase in summer visitors this year, which may be a factor in this growth. Also, an optimistic holiday forecast from Federal Express may be a sign that the sector's upcoming fall employment levels will follow historical trends and finish the year at or above projected growth.



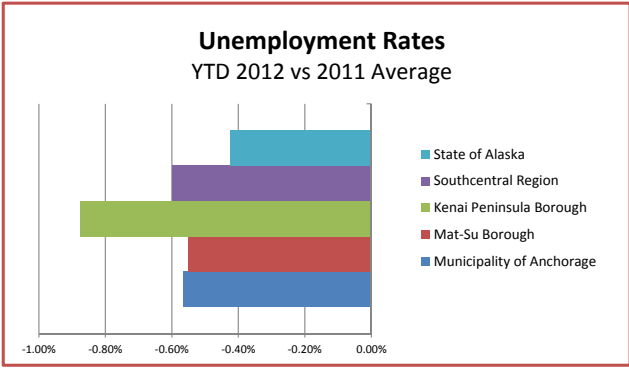
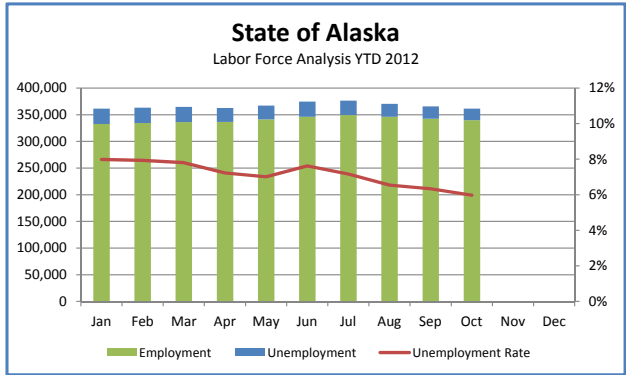
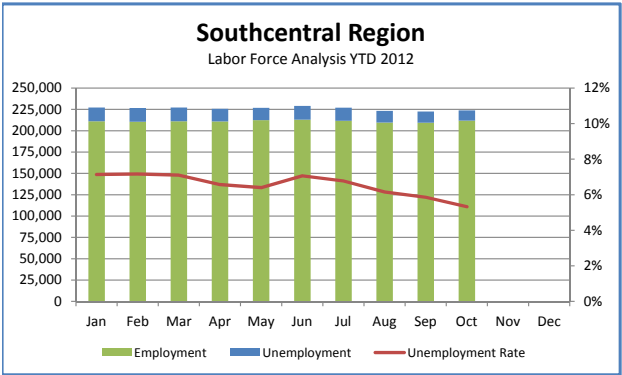
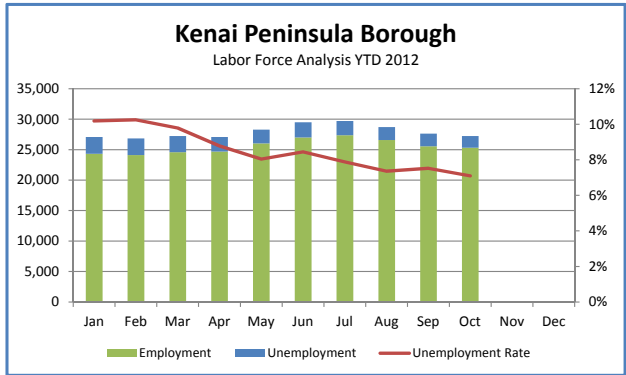
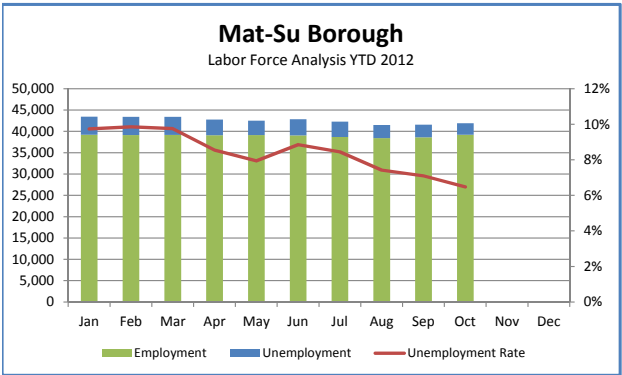
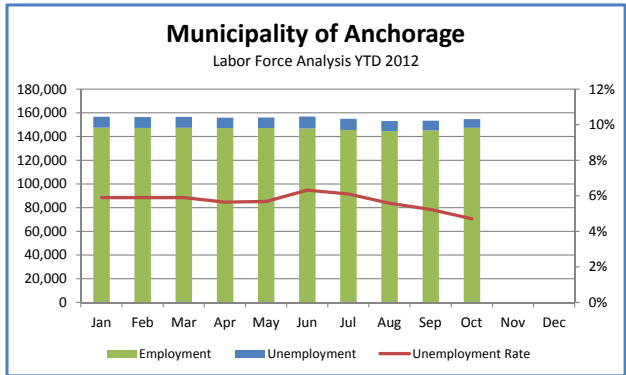
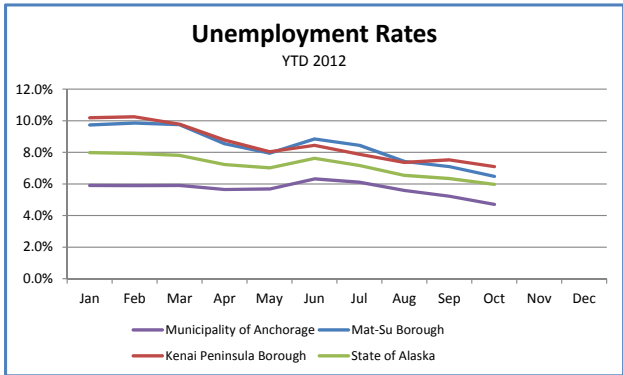


Unemployment Analysis (Year-To-Date, 2012)

• Anchorage • Mat-Su Borough • Kenai Peninsula Borough •

	Jan	Feb	Mar	Apr	May	Jun	Jul	Aug	Sep	Oct	Nov	Dec	12 YTD Avg	11 YTD Avg	12 vs 11
	revised	revised	revised	revised	revised	revised	revised	revised	revised	preliminary					
Municipality of Anchorage															
Labor Force	156,853	156,529	156,685	155,981	156,126	156,886	155,093	153,149	153,370	154,786			155,546	156,176	(630)
Employment	147,598	147,299	147,441	147,172	147,255	146,965	145,616	144,593	145,348	147,492			146,678	146,387	291
Unemployment	9255	9230	9244	8809	8871	9921	9,477	8,556	8,022	7,294			8,868	9,789	(921)
Unemployment Rate	5.9%	5.9%	5.9%	5.6%	5.7%	6.3%	6.1%	5.6%	5.2%	4.7%			5.7%	6.3%	-0.6%
Mat-Su Borough															
Labor Force	43,471	43,437	43,434	42,783	42,526	42,865	42,285	41,521	41,592	41,927			42,584	42,757	(173)
Employment	39,238	39,158	39,196	39,125	39,146	39,070	38,711	38,439	38,639	39,210			38,993	38,916	78
Unemployment	4233	4279	4238	3658	3380	3795	3,574	3,082	2,953	2,717			3,591	3,841	(250)
Unemployment Rate	9.7%	9.9%	9.8%	8.6%	7.9%	8.9%	8.5%	7.4%	7.1%	6.5%			8.4%	9.0%	-0.6%
Kenai Peninsula Borough															
Labor Force	27,083	26,863	27,259	27,088	28,308	29,497	29,707	28,714	27,650	27,251			27,942	27,930	12
Employment	24,324	24,110	24,591	24,709	26,031	27,004	27,365	26,600	25,569	25,317			25,562	25,306	256
Unemployment	2759	2753	2668	2379	2277	2493	2,342	2,114	2,081	1,934			2,380	2,624	(244)
Unemployment Rate	10.2%	10.2%	9.8%	8.8%	8.0%	8.5%	7.9%	7.4%	7.5%	7.1%			8.5%	9.4%	-0.9%
Southcentral Region															
Labor Force	227,407	226,829	227,378	225,852	226,960	229,248	227,085	223,384	222,612	223,964			226,072	226,863	(791)
Employment	211,160	210,567	211,228	211,006	212,432	213,039	211,692	209,632	209,556	212,019			211,233	210,609	624
Unemployment	16,247	16,262	16,150	14,846	14,528	16,209	15,393	13,752	13,056	11,945			14,839	16,254	(1,415)
Unemployment Rate	7.1%	7.2%	7.1%	6.6%	6.4%	7.1%	6.8%	6.2%	5.9%	5.3%			6.6%	7.2%	-0.6%
State of Alaska															
Labor Force	361,764	363,359	364,856	362,887	367,276	374,909	376,773	370,646	365,860	361,593			366,992	367,318	(326)
Employment	332,873	334,539	336,373	336,640	341,504	346,333	349,771	346,389	342,670	339,989			340,708	339,447	1,261
Unemployment	28891	28820	28483	26247	25772	28576	27,002	24,257	23,190	21,604			26,284	27,871	(1,587)
Unemployment Rate	8.0%	7.9%	7.8%	7.2%	7.0%	7.6%	7.2%	6.5%	6.3%	6.0%			7.2%	7.6%	-0.4%

***Note:** These numbers reflect employment, unemployment, etc. for only those people that are residence of the specified City/Region, thus are not inclusive of people who commute to another city for their jobs. (Ex: Someone lives in Wasilla but works in Anchorage. They would be counted in the Mat-Su Borough's labor force and employment numbers, not the Municipality of Anchorage numbers)





Industry Employment Estimates 2012 Municipality of Anchorage

Industry	Jan	Feb	Mar	Apr	May	Jun	Jul	Aug	Sep	Oct	Nov	Dec	2012 YTD Avg.	2011 YTD Avg.	2012 vs 2011 YTD Change	% Change
	revised	revised	revised	revised	revised	revised	revised	revised	revised	preliminary						
Total Nonfarm	150,500	152,200	152,900	153,600	156,100	160,400	157,800	158,800	160,200	158,100			156,060	154,380	1,680	1.09%
Goods Producing	11,600	11,500	11,400	11,800	13,000	14,500	15,400	15,500	15,000	14,500			13,420	13,100	320	2.44%
Services Providing	138,900	140,700	141,500	141,900	143,100	145,800	142,300	143,300	145,200	143,600			142,630	141,260	1,370	0.97%
Mining and Logging ²	3,000	3,000	3,000	3,000	3,100	3,100	3,200	3,200	3,100	3,100			3,080	2,970	110	3.70%
Oil & Gas	2,900	2,900	2,900	2,900	2,900	2,900	3,000	2,900	2,900	2,900			2,910	2,810	100	3.56%
Construction	6,600	6,400	6,500	6,800	7,800	9,200	9,800	10,000	9,500	9,200			8,180	8,180	0	0.00%
Manufacturing	2,000	2,000	1,900	2,000	2,100	2,200	2,400	2,400	2,300	2,300			2,160	1,960	200	10.20%
Trade/Transportation/Utilities	32,400	32,300	32,500	32,800	33,800	34,300	34,800	34,500	33,900	33,300			33,460	33,040	420	1.27%
Wholesale Trade	4,500	4,400	4,500	4,500	4,600	4,700	4,800	4,800	4,600	4,500			4,590	4,620	-30	-0.65%
Retail Trade	16,900	16,700	16,700	17,000	17,400	17,400	17,700	17,500	17,300	17,500			17,210	17,020	190	1.12%
Trans/Warehouse/Utilities	11,000	11,200	11,300	11,300	11,800	12,200	12,300	12,200	11,900	11,300			11,650	11,400	250	2.19%
Air Transportation	3,000	2,900	3,000	3,000	3,100	3,200	3,200	3,200	3,000	3,000			3,060	2,970	90	3.03%
Information	3,900	3,900	3,900	3,900	3,900	3,900	3,900	3,900	3,800	3,800			3,880	3,990	-110	-2.76%
Financial Activities	8,600	8,700	8,800	8,800	8,900	8,900	8,800	8,700	8,600	8,500			8,730	8,920	-190	-2.13%
Professional & Business Svcs	18,000	18,500	18,600	18,700	19,300	20,100	20,000	20,000	20,100	19,600			19,290	18,810	480	2.55%
Educational & Health Services	23,600	23,800	23,900	23,800	23,900	24,000	23,900	24,400	24,600	24,600			24,050	23,320	730	3.13%
Health Care	17,500	17,500	17,500	17,600	17,600	17,700	17,700	17,700	18,000	17,900			17,670	17,170	500	2.91%
Leisure & Hospitality	16,100	16,200	16,500	16,400	16,700	17,500	17,800	17,800	17,500	17,000			16,950	16,550	400	2.42%
Accommodation	3,200	3,200	3,200	3,100	3,100	3,300	3,400	3,400	3,400	3,100			3,240	3,220	20	0.62%
Food Svcs & Drinking Places	10,500	10,600	10,800	11,000	11,300	11,700	11,800	11,800	11,500	11,300			11,230	10,930	300	2.74%
Other Services	5,700	5,700	5,800	5,900	6,000	6,300	6,000	5,700	5,600	5,700			5,840	5,800	40	0.69%
Government	30,500	31,600	31,600	31,600	30,700	30,800	27,200	28,300	31,200	31,100			30,460	30,850	-390	-1.26%
Federal Government	9,400	9,400	9,400	9,300	9,300	9,400	9,400	9,400	9,400	9,300			9,370	9,570	-200	-2.09%
State Government	10,000	10,900	10,900	10,900	10,200	10,200	10,100	10,200	11,000	11,000			10,540	10,550	-10	-0.09%
State Education	2,100	2,900	2,900	2,900	2,200	2,100	1,900	2,100	2,800	2,900			2,480	2,480	0	0.00%
Local Government	11,200	11,300	11,300	11,400	11,100	11,200	7,800	8,800	10,800	10,800			10,570	10,720	-150	-1.40%
Local Education	8,500	8,500	8,500	8,500	8,200	8,200	4,900	6,000	8,000	8,000			7,730	7,820	-90	-1.15%

- Nonfarm Wage & Salary excludes self-employed workers, fishers, domestics, and unpaid family workers.

- All totals are seasonally non-adjusted totals.

- Government includes employees of public school systems and the University of Alaska.

- Beginning January 2001, wage and salary employment estimates were published under a new classification system. The Standard Industrial Classification system (SIC) has been replaced by the North American Industry Classification System (NAICS). Data prior to 2001 are comparable only at the Total Nonfarm and Government levels.

^{1/} As of January 2001, certain federally-recognized tribal entities were moved to Local Government, which created a series break for Total Government and Local Government. [Please see the April 2002 Alaska Economic Trends publication for a detailed explanation.](#)

^{2/} This category was called "Natural Resources and Mining" in previous years. The change is in name only; the industries it includes remain the same.

- Some totals may not equal components due to rounding.

- Source: Alaska Department of Labor and Workforce Development, Research and Analysis Section

* **Note:** The above numbers are representative of all people employed in the Municipality of Anchorage, this is inclusive of workers who claim residence outside of the Municipality of Anchorage. (Ex: someone who lives in the Mat-Su, but works in Anchorage would be included in these number)

Quick Comparisons		
12 vs 11 Oct.	2,100	1.33%
12 vs 11 1st Qtr	1,567	1.04%
12 vs 11 2nd Qtr	1,467	0.94%
12 vs 11 3rd Qtr.	1,867	1.19%
12 vs 11 4th Qtr.	n/a	n/a



**Industry Employment Estimates 2012
State of Alaska**

Industry	Jan	Feb	Mar	Apr	May	Jun	Jul	Aug	Sep	Oct	Nov	Dec	2012 YTD Avg.	2011 YTD Avg.	2011 YTD Change	% Change
	revised	revised	revised	revised	revised	revised	revised	revised	revised	preliminary						
Total Nonfarm	309,200	317,100	319,900	321,100	349,600	350,300	353,100	351,800	342,000	325,800			333,990	331,360	2,630	0.79%
Goods Producing	36,800	38,900	39,700	38,700	48,700	49,100	56,100	53,200	46,200	41,200			44,860	45,940	-1,080	-2.35%
Services Providing	272,400	278,200	280,200	282,400	290,300	300,900	297,000	298,600	295,800	284,600			288,040	285,420	2,620	0.92%
Mining and Logging ²	15,400	16,000	16,100	16,300	16,600	17,200	17,300	17,400	17,100	16,800			16,620	15,900	720	4.53%
Mining	15,300	15,700	15,800	15,900	16,100	16,700	16,900	17,000	17,000	16,700			16,310	15,620	690	4.42%
Oil & Gas	12,800	13,200	13,200	13,200	13,300	13,400	13,500	13,500	13,600	13,400			13,310	12,950	360	2.78%
Construction	11,600	11,500	11,400	11,600	13,100	15,300	16,000	16,000	15,400	15,300			13,720	15,630	-1,910	-12.22%
Manufacturing	9,800	11,400	12,200	10,800	10,000	16,200	22,800	19,800	13,700	9,100			13,580	14,410	-830	-5.76%
Seafood Processing	7,000	8,600	8,900	7,600	6,600	12,600	21,100	17,700	11,900	6,800			10,880	10,890	-10	-0.09%
Trade/Transportation/Utilities	59,600	59,700	60,300	61,800	65,600	68,200	69,200	69,300	66,400	62,800			64,290	63,660	630	0.99%
Wholesale Trade	5,900	6,000	6,000	6,000	6,100	6,400	7,000	7,000	6,900	6,600			6,390	6,270	120	1.91%
Retail Trade	33,900	33,500	33,600	34,700	36,300	37,100	37,400	37,200	35,900	35,100			35,470	35,600	-130	-0.37%
Food & Beverage Stor	6,100	6,200	6,100	6,300	6,400	6,500	6,500	6,400	6,300	6,300			6,310	6,210	100	1.61%
General Merchandise	9,800	9,500	9,400	9,600	10,100	10,600	10,800	10,400	9,900	9,900			10,000	9,870	130	1.32%
Trans/Warehouse/Utilitie	19,800	20,200	20,700	21,100	23,200	24,700	24,800	25,100	23,600	21,100			22,430	21,790	640	2.94%
Air Transportation	5,500	5,400	5,500	5,600	6,000	6,500	6,500	6,400	6,200	5,800			5,940	5,830	110	1.89%
Information	6,300	6,300	6,300	6,300	6,400	6,500	6,500	6,500	6,300	6,300			6,370	6,380	-10	-0.16%
Telecommunications	4,100	4,100	4,100	4,100	4,100	4,200	4,100	4,100	4,000	4,000			4,090	4,140	-50	-1.21%
Financial Activities	14,500	14,700	14,600	14,500	14,700	15,500	15,700	15,400	15,100	14,700			14,940	14,820	120	0.81%
Professional & Business Svcs	25,800	27,100	27,200	27,300	28,300	29,800	29,100	29,100	28,700	27,500			27,990	27,460	530	1.93%
Educational & Health Services	45,500	45,900	46,200	46,400	46,400	46,400	46,200	46,100	46,000	46,600			46,170	44,310	1,860	4.20%
Health Care	31,800	32,100	32,000	32,300	32,300	32,400	32,500	32,600	32,400	32,600			32,300	31,420	880	2.80%
Leisure & Hospitality	27,900	28,300	28,900	29,400	33,300	38,800	39,900	40,300	36,100	29,100			33,200	33,190	10	0.03%
Accommodation	5,700	5,800	6,100	6,200	7,100	9,600	10,400	10,500	8,800	6,300			7,650	8,160	-510	-6.25%
Food Svcs & Drinking Plac	18,200	18,300	18,500	18,800	20,900	23,000	23,000	23,400	21,600	18,600			20,430	20,210	220	1.09%
Other Services	10,600	10,700	10,900	10,900	11,100	11,500	11,100	11,100	11,000	11,400			11,030	11,080	-50	-0.45%
Government	82,200	85,500	85,800	85,800	84,500	84,200	79,300	80,800	86,200	86,200			84,050	84,520	-470	-0.56%
Federal Government	15,900	16,000	16,100	16,200	16,600	16,900	17,000	16,800	16,400	15,800			16,370	17,200	-830	-4.83%
State Government	24,100	26,400	26,500	26,600	25,700	25,000	24,800	25,200	26,700	26,700			25,770	25,790	-20	-0.08%
State Education	6,500	8,600	8,600	8,600	7,400	6,300	5,800	6,600	8,400	8,600			7,540	7,540	0	0.00%
Local Government	42,200	43,100	43,200	43,000	42,200	42,300	37,500	38,800	43,100	43,700			41,910	41,530	380	0.92%
Local Education	25,200	25,600	25,700	25,800	24,700	23,800	18,900	20,500	25,200	26,000			24,140	23,760	380	1.60%
Tribal Government ¹	3,700	3,700	3,700	3,800	3,800	4,100	4,500	4,300	4,300	4,100			4,000	3,790	210	5.54%

- Nonfarm Wage & Salary excludes self-employed workers, fishers, domestics, and unpaid family workers.

- All totals are non-seasonally adjusted totals.

- Government includes employees of public school systems and the University of Alaska.

- Beginning January 2001, wage and salary employment estimates were published under a new classification system. The Standard Industrial Classification system (SIC) has been replaced by the North American Industry Classification System (NAICS). Data prior to 2001 are comparable only at the Total Nonfarm and Government levels.

^{1/} As of January 2001, certain federally-recognized tribal entities were moved to Local Government, which created a series break for Total Government and Local Government. [Please see the April 2002 Alaska Economic Trends publication for a detailed explanation.](#)

^{2/} This category was called "Natural Resources and Mining" in previous years. The change is in name only; the industries it includes remain the same.

- Totals may not equal sub-sections due to rounding.

- Source: Alaska Department of Labor and Workforce Development, Research and Analysis Section

Quick Comparisons		
12 vs 11 Oct.	100	0.03%
12 vs 11 1st Qtr	2,067	0.66%
12 vs 11 2nd Qtr	6,933	2.08%
12 vs 11 3rd Qtr	-267	-0.08%
12 vs 11 4th Qtr	N/A	N/A

Dianne Blumer
Commissioner
P.O. Box 111149
Juneau, AK 99811-1149
www.labor.alaska.gov



Beth Leschper
Communications Director
907.465.2700
cell: 907.723.1321
beth.leschper@alaska.gov

Press Release

COMMISSIONER'S OFFICE

November 16, 2012

No. 12-55

Unemployment rate at 7.1 percent in October

Alaska's seasonally adjusted unemployment rate was 7.1 percent in October, according to preliminary estimates. October's rate was four-tenths of a percentage point lower than September's 7.5 percent.

The significant decline in the October seasonally adjusted unemployment rate reversed the summer's upturn. No definitive trend in Alaska's rate in either direction has been evident this year.

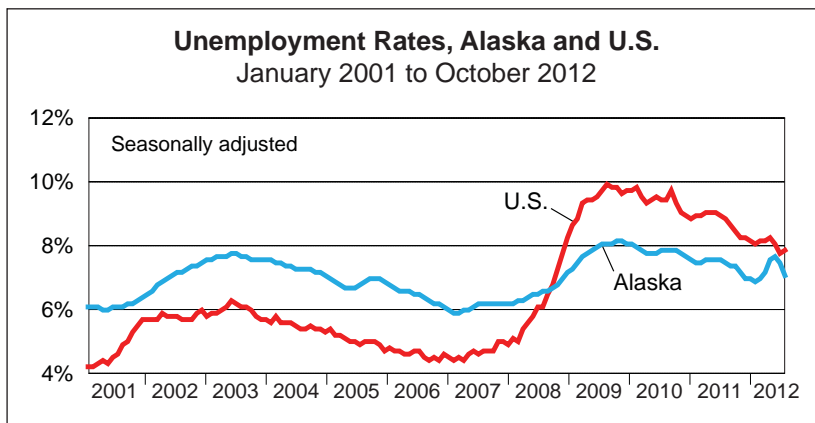
The national seasonally adjusted rate was 7.9 percent in October, which was essentially unchanged from September's 7.8 percent. The U.S. rate has fallen more than two percentage points from its recession high of 10.0 percent in 2009, although it remains well above pre-recession levels. October marks the 48th consecutive month that the national rate has been higher than Alaska's.

October rates for Alaska's boroughs and census areas – which are not seasonally adjusted – varied widely. The highest rate was in Wade Hampton Census Area at 19.2 percent. The City and Borough of Juneau had the lowest unemployment rate in October, at 4.3 percent.

The biggest over-the-month change was in the Municipality of Skagway, where September's 2.4 percent unemployment jumped to 17.3 percent in October with the end of the tourism season.

Contact: Caroline Schultz, Economist
(907) 465-6027

Research and Analysis Web site: laborstats.alaska.gov



	10/12	9/12	10/11
Alaska	7.1%	7.5%	7.5%
U.S.	7.9%	7.8%	8.9%

Sources for graph and table: Alaska Department of Labor and Workforce Development, Research and Analysis Section; and U.S. Bureau of Labor Statistics

For detailed employment estimates, see <http://live.laborstats.alaska.gov/ces/>. The estimates are preliminary and subject to potentially large revisions.

Labor Force by Borough and Census Area, Not Seasonally Adjusted¹

	Civilian Labor Force			Unemployed					
	10/12 ^P	9/12	10/11	Number			Rate		
				10/12 ^P	9/12	10/11	10/12 ^P	9/12	10/11
Alaska Statewide	361,593	365,860	366,250	21,604	23,190	25,453	6.0	6.3	6.9
Anchorage/Mat-Su Region	196,713	194,962	201,373	10,011	10,975	12,358	5.1	5.6	6.1
Municipality of Anchorage	154,786	153,370	158,228	7,294	8,022	8,908	4.7	5.2	5.6
Matanuska-Susitna Borough	41,927	41,592	43,145	2,717	2,953	3,450	6.5	7.1	8.0
Gulf Coast Region	39,211	40,839	39,037	2,739	2,844	3,175	7.0	7.0	8.1
Kenai Peninsula Borough	27,251	27,650	27,287	1,934	2,081	2,303	7.1	7.5	8.4
Kodiak Island Borough	7,085	7,455	6,788	360	365	393	5.1	4.9	5.8
Valdez-Cordova Census Area	4,875	5,734	4,962	445	398	479	9.1	6.9	9.7
Interior Region	55,181	56,061	55,270	3,211	3,408	3,818	5.8	6.1	6.9
Denali Borough	836	1,852	940	128	97	148	15.3	5.2	15.7
Fairbanks North Star Borough	47,675	47,404	47,423	2,371	2,543	2,867	5.0	5.4	6.0
Southeast Fairbanks Census Area	3,487	3,600	3,662	323	344	354	9.3	9.6	9.7
Yukon-Koyukuk Census Area	3,183	3,205	3,245	389	424	449	12.2	13.2	13.8
Northern Region	13,050	12,852	12,928	1,088	1,245	1,230	8.3	9.7	9.5
Nome Census Area	4,317	4,244	4,246	426	476	473	9.9	11.2	11.1
North Slope Borough	5,609	5,488	5,493	269	307	316	4.8	5.6	5.8
Northwest Arctic Borough	3,124	3,120	3,189	393	462	441	12.6	14.8	13.8
Southeast Region	39,027	42,032	39,219	2,257	2,321	2,715	5.8	5.5	6.9
Haines Borough	1,284	1,761	1,303	85	84	103	6.6	4.8	7.9
Hoonah-Angoon Census Area	927	1,374	933	107	164	131	11.5	11.9	14.0
Juneau, City and Borough of	18,237	18,416	18,403	782	796	937	4.3	4.3	5.1
Ketchikan Gateway Borough	7,947	9,158	8,062	464	481	542	5.8	5.3	6.7
Petersburg Census Area	1,719	1,788	1,680	145	126	142	8.4	7.0	8.5
Prince of Wales-Hyder Census Area	2,439	2,638	2,466	254	331	331	10.4	12.5	13.4
Sitka, City and Borough of	4,407	4,602	4,341	202	221	259	4.6	4.8	6.0
Skagway, Municipality of	636	794	658	110	19	144	17.3	2.4	21.9
Wrangell, City and Borough of	1,103	1,154	1,098	85	79	103	7.7	6.8	9.4
Yakutat, City and Borough of	328	347	275	23	20	23	7.0	5.8	8.4
Southwest Region	18,406	19,117	18,426	2,297	2,397	2,157	12.5	12.5	11.7
Aleutians East Borough	1,166	1,253	1,126	131	139	118	11.2	11.1	10.5
Aleutians West Census Area	3,389	3,060	2,844	349	237	204	10.3	7.7	7.2
Bethel Census Area	7,446	7,176	7,813	1,002	1,110	997	13.5	15.5	12.8
Bristol Bay Borough	567	1,201	581	34	36	41	6.0	3.0	7.1
Dillingham Census Area	1,845	2,196	1,903	180	198	195	9.8	9.0	10.2
Lake and Peninsula Borough	1,187	1,286	1,109	63	71	71	5.3	5.5	6.4
Wade Hampton Census Area	2,806	2,945	3,050	538	606	531	19.2	20.6	17.4

P = Preliminary. As more information becomes available, data are revised every month for the previous month and again at the end of every calendar year.

Note: The official definition of unemployment excludes anyone who has not made an active attempt to find work in the four-week period up to and including the week that includes the 12th of the reference month. Many in rural Alaska do not meet the definition because they have not conducted an active job search due to the scarcity of employment opportunities.

¹Unemployment rates that are not seasonally adjusted should not be compared with those that are.

Source: Alaska Department of Labor and Workforce Development, Research and Analysis Section; and U.S. Bureau of Labor Statistics