



AEDC
Anchorage Economic
Development Corporation

April 2013 Employment Report Anchorage

4.9%

April Unemployment Rate
for Anchorage

anchorage™
big wild life

MONTHLY UNEMPLOYMENT

The unemployment rate in Anchorage during April was **4.9 PERCENT**, showing no change from March. *The April unemployment rate has not been lower than this since 1999 when it was 4.5 percent.* April's rate typically trends lower than March's and has not increased or stayed flat since 1990, so this month's reading may indicate a slower start to the summer employment season than expected. However, many positive indicators, including increased job numbers and high consumer confidence indices are tempering negative outlooks. The year's overall trend points to the strong possibility of a 2013 annual unemployment rate below five percent.

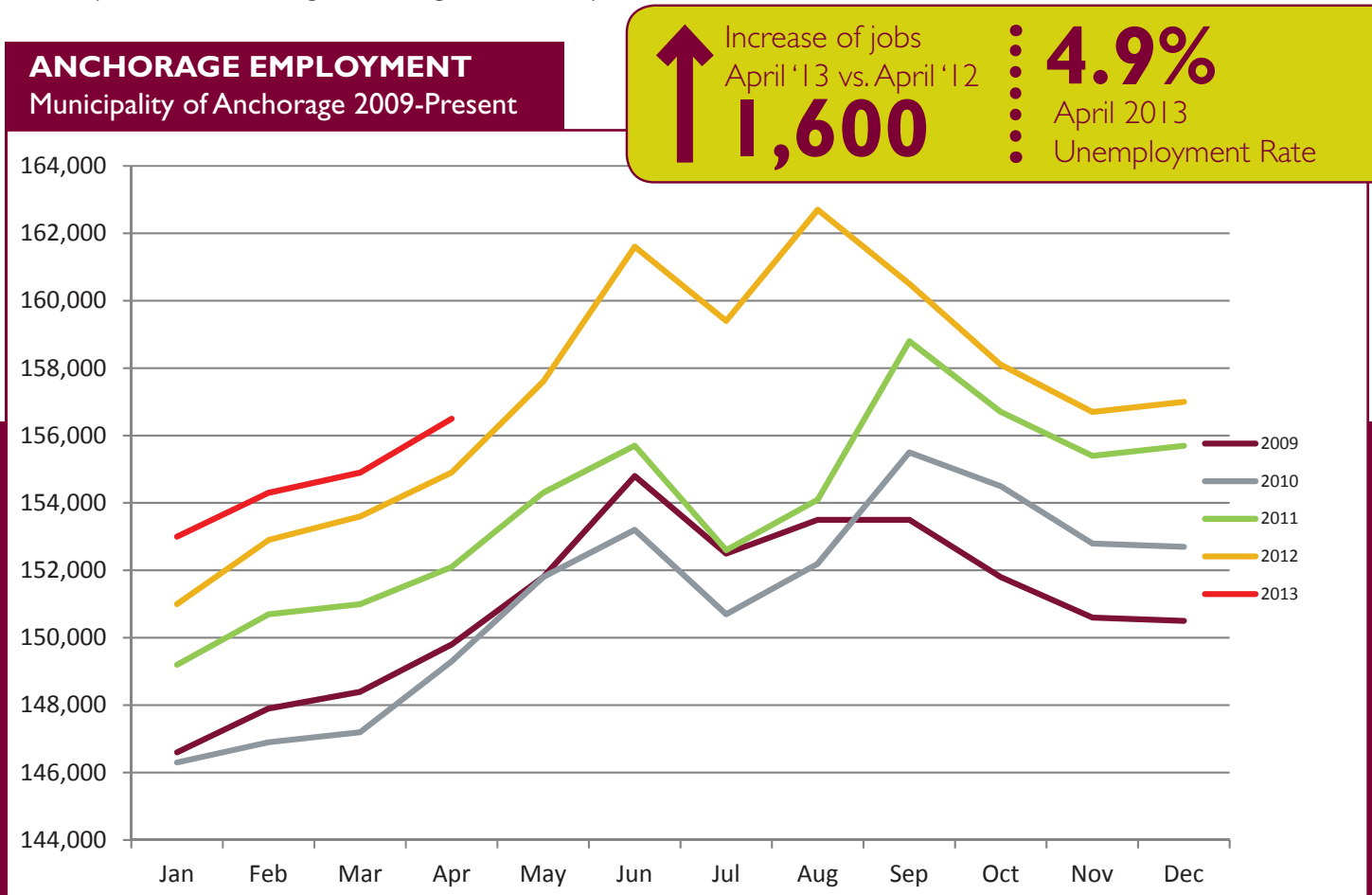
YEAR-TO-DATE UNEMPLOYMENT

The average year-to-date (YTD) **non-seasonally adjusted unemployment rate in Anchorage was 5.1 percent**, down from 5.2 percent in March and 0.8 percent lower than the 2012 YTD average. *An increase of 395 to the employment total and a decrease of 830 from the Anchorage labor force during the YTD period has resulted in a reduction of 1,225 people in the reported unemployment total.*

It is important to note that these unemployment numbers represent the labor force residing in Anchorage, and do not include jobs in Anchorage held by residents from outside the municipality. The industry employment estimates referenced in the remainder of this report are representative of all jobs in the Municipality of Anchorage, regardless of the job holder's place of residency.

ANCHORAGE INDUSTRY EMPLOYMENT ESTIMATES

As for the Anchorage Industry Employment estimates, the YTD average is growing strongly over 2012 with a **TOTAL INCREASE OF 1,575 JOBS SO FAR**. Industries showing the largest YTD growth rates are all in the goods producing category, which includes oil & gas, manufacturing and construction. Six of the ten major sector's April 2013 averages are at or above April 2012's, indicating sustained growth in many fields.



EXECUTIVE SUMMARY CONT.

MONTHLY REVISIONS

Each month, the Alaska Department of Labor's Research and Analysis Division revises the previous month's employment numbers based on the availability of newer or late arriving data. The following tables show the changes in Anchorage's and Alaska's March job totals by industry. Most adjustments are relatively minor, however, some changes, such as the Seafood Processing industry total for Alaska, are significant. Changes such as these are normally the result of job classification modifications or errors within the industry and do not generally reflect changes in the overall totals.

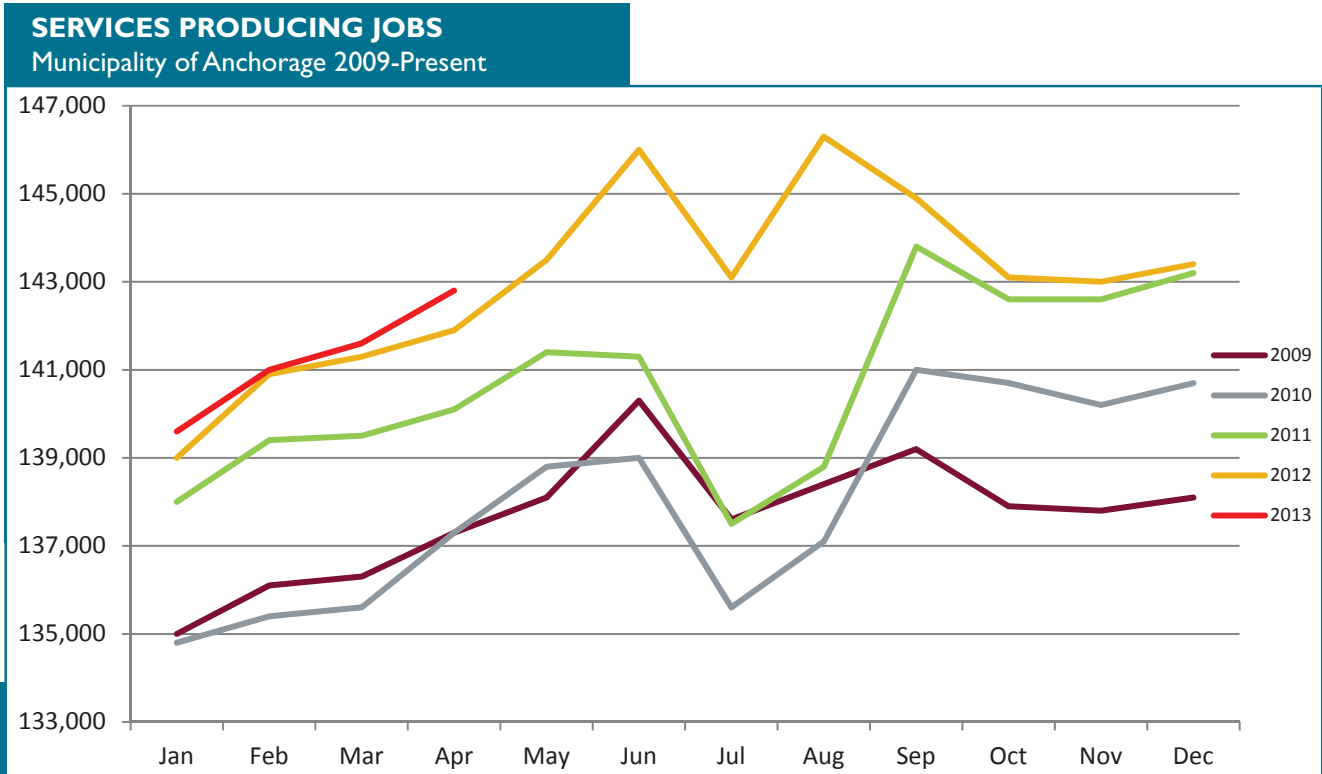
MARCH 2013 REVISIONS, ANCHORAGE			
Industry	Preliminary Total	Revised Total	Net Change
Total Nonfarm	154,600	154,900	+300
Oil & Gas	3,600	3,500	-100
Construction	7,300	7,400	+100
Service Producing	141,300	141,600	+300
Trade, Transportation, Utilities	31,800	31,900	+100
Wholesale Trade	4,300	4,400	+100
Retail Trade	16,500	16,600	+100
Educational & Health Services	25,100	25,300	+200
Leisure & Hospitality	16,700	16,800	+100
Food Services & Drinking Places	11,100	11,200	+100
Government	30,700	30,500	-200
Local Government	10,800	10,700	-100
Local Education	8,000	7,900	-100
MARCH 2013 REVISIONS, ALASKA			
Industry	Preliminary Total	Revised Total	Net Change
Total Nonfarm	323,900	323,800	-100
Manufacturing, Seafood Processing	9,500	7,400	-2,100
Service Producing	280,400	280,300	-100
Trade, Transportation, Utilities	60,900	61,000	+100
Retail Trade	34,300	34,400	+100
General Merchandise Stores	9,600	9,700	+100
Professional & Business Services	27,600	27,200	-400
Leisure & Hospitality	29,200	29,400	+200
Food Services & Drinking Places	18,600	18,700	+100
Federal Government	15,000	14,900	-100
Local Government	42,600	42,700	+100
Local Education	24,400	24,100	-300

SERVICES PRODUCING JOBS

ENGINEERING, RETAIL, TOURISM, HEALTH CARE, ETC.

Services producing jobs in Anchorage totaled **154,675** for April. Overall, the YTD average is **up 475 jobs** from 2012 YTD.

The **educational and health services sector growth rate is 3.17 percent** so far this year, making it the highest growth sector in the service industry. **Federal and local government sectors are both averaging less than this point last year** (-424 for federal and -525 locally), but the **state government jobs average is up 125 YTD**. Increased consumer spending in the first quarter of the year is signaling positive growth in the retail and hospitality industries. Early signs of a strong tourism season have also been noted, including CIRI's tourism businesses announcing a 30 percent increase in bookings.



Increase of Services Producing Jobs YTD

475

April total:

154,675

Services Producing Jobs in Anchorage

APRIL 12 vs. APRIL 13
YEAR TO DATE

Educational & Health Services

+775

Leisure & Hospitality

+300

Information & Financial

-125

Professional & Business Services

+500

Retail

+25

Local & Federal Government

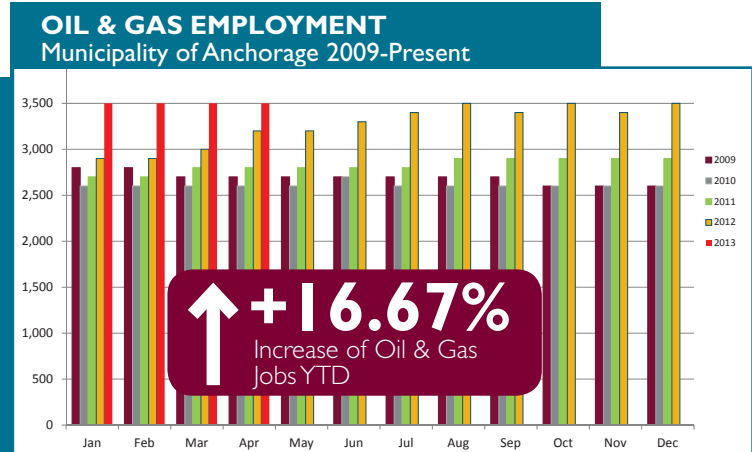
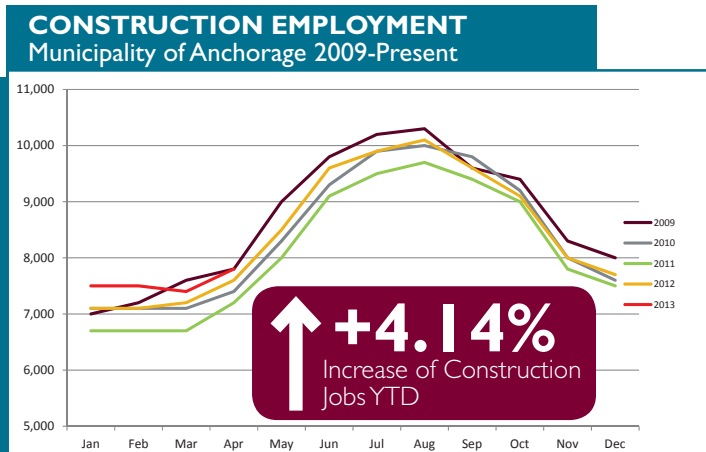
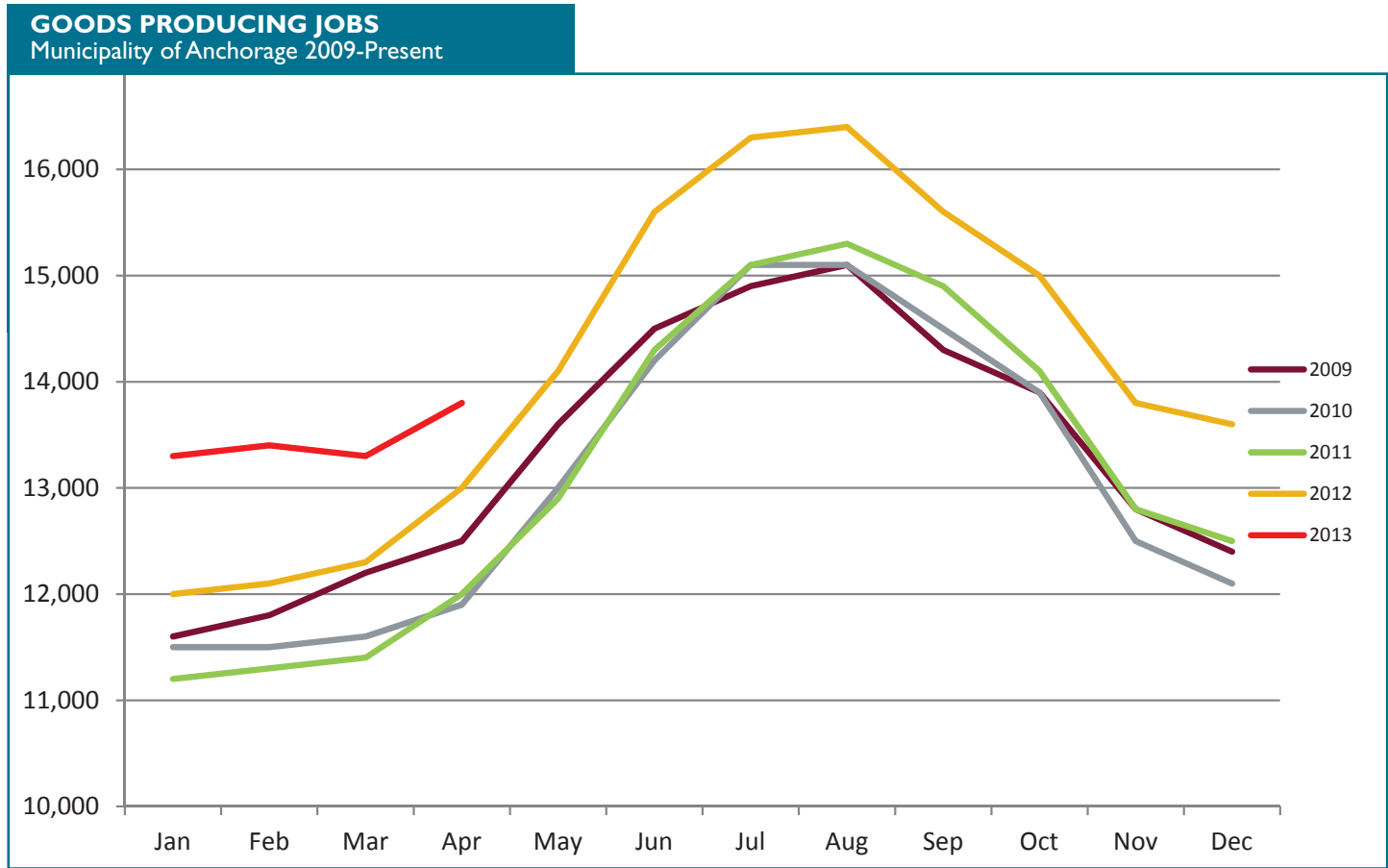
-950

GOODS PRODUCING JOBS

CONSTRUCTION WORK, MINING, OIL & GAS PRODUCTION, MANUFACTURING

Goods producing jobs (those jobs that are specifically tied to production, not those which support the production or maintenance of the production jobs) are showing remarkable growth, **AVERAGING 1,100 MORE JOBS IN 2013 YTD** over the same period in 2012.

The oil & gas sector is leading the way, with 500 more jobs than last year at this point, equalling a growth rate more than 15 percent. Advancement of projects by many companies, including ConocoPhillips, Brooks Range Petroleum and Repsol may be indicative of increasing operations throughout the resource extraction industry, which may lead to even more job growth. The construction industry is also seeing higher job numbers in April, averaging 300 more jobs over 2012 YTD. A \$20 million renovation of the midtown Fred Meyer is the latest construction project announced this year, adding to a sizable list of developments this summer.

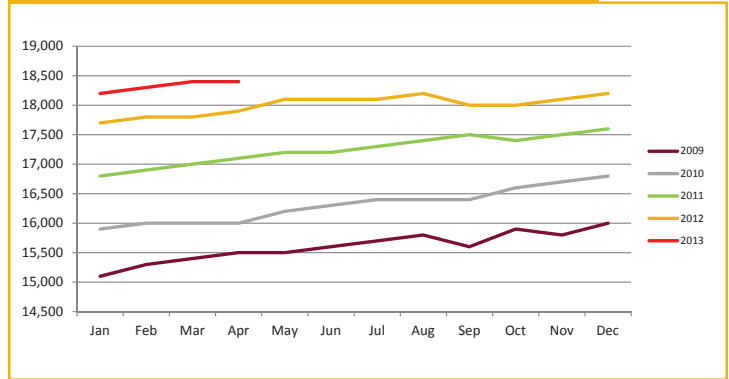


••••• SERVICES PRODUCING JOBS SUMMARY

HEALTH CARE EMPLOYMENT

The health care industry is still going strong, with **525 MORE JOBS** over 2012 YTD. The 2.95 percent YTD job growth in the local health care sector is still below the 2012 end of year rate, but is still one of the fastest growing service producing industries. If this trend continues through the year, the sector will prove AEDC's January projection of 400 additional health care jobs to be conservative. Health care has been identified by the state Department of Labor as the industry with the highest growth potential in Alaska for the next decade.

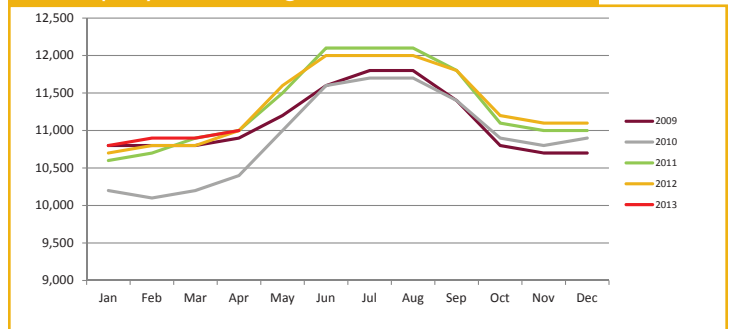
HEALTH CARE EMPLOYMENT
Municipality of Anchorage 2009-Present



TRANSPORTATION

The April estimate of 11,000 jobs is the same level as 2012. The YTD average is 75 jobs higher. AEDC estimates that this industry should retain 100 jobs by the end of the year. First quarter cargo and passenger totals at the Ted Stevens Anchorage International Airport were significantly lower than Q1 of 2012, but this has not yet impacted job growth in this industry. Improvements in retail trade may be helping to bolster job numbers with traffic through the Port of Anchorage.

TRANSPORTATION EMPLOYMENT
Municipality of Anchorage 2009-Present

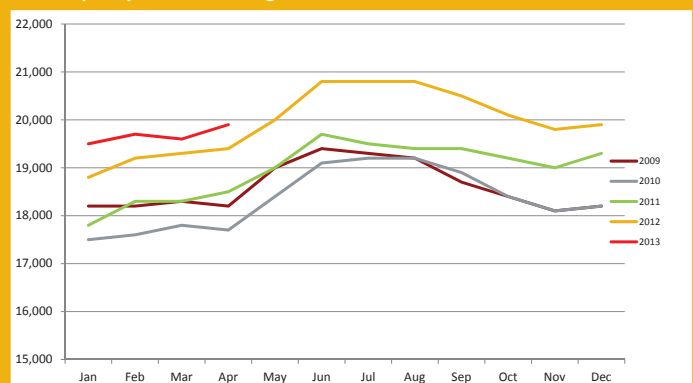


PROFESSIONAL & BUSINESS SERVICES

ENGINEERING, ARCHITECTURE, LEGAL SERVICES, ACCOUNTING, SCIENTIFIC RESEARCH, WASTE MANAGEMENT & ADMINISTRATIVE SERVICES

The YTD average is **up 500 jobs from 2012** and the rate of increase is one of the **largest of all the service providing industries** at 2.61 percent. Job growth within this industry is often tied to growth in other industries such as oil & gas, construction and transportation. As these goods producing industries continue to grow, more positions in professional and business services are expected.

PROFESSIONAL & BUSINESS SERVICES EMPLOYMENT
Municipality of Anchorage 2009-Present



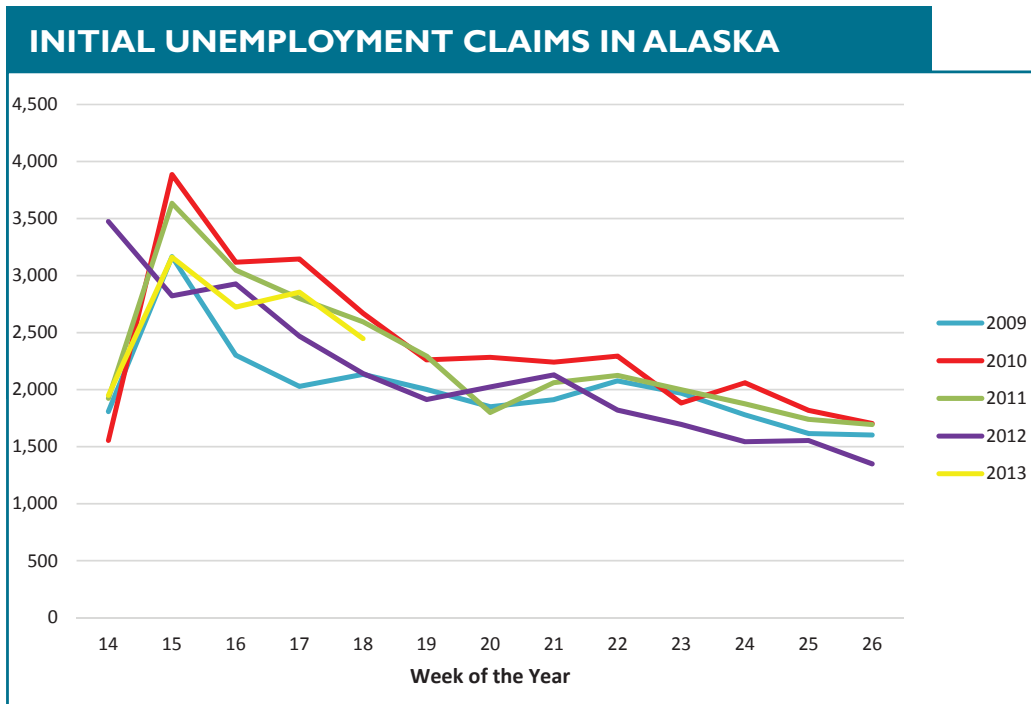
↑ Increase of Professional & Business Services jobs
500
April 13 vs. April 12

↑ **2.61%**
Increase of Professional & Business Services Jobs YTD

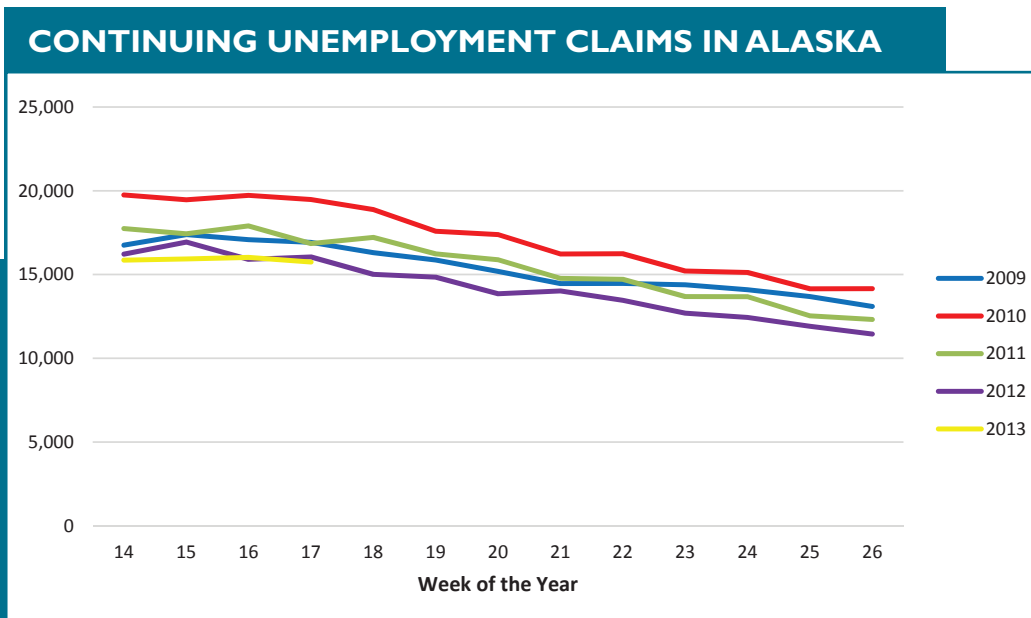
↑ **19,675**
April 2013 Professional & Business Services Jobs

UNEMPLOYMENT CLAIMS

Initial unemployment claim applications can be interpreted as a proxy for layoffs. They tend to fall as job growth accelerates.



Continuing claims figures help to show how well unemployed workers are re-entering the workforce. This total does not include workers receiving extended benefits from the federal government. So far, the second quarter totals are very positive, with continuing claims remaining lower than this point in the previous four years. While initial claims are not dropping as quickly as they had in the first quarter, they are still trending down, suggesting that workers are having more success finding new employment.



All data referenced in this employment report is from the State of Alaska, Dept. of Labor & Workforce Development website: www.laborstats.alaska.gov

UNEMPLOYMENT ANALYSIS (YTD, 2013)

Anchorage, Mat-Su, Kenai Peninsula Borough

	Jan	Feb	Mar	Apr	May	Jun	Jul	Aug	Sep	Oct	Nov	Dec	13 YTD Avg	12 YTD Avg	13 vs 12
Municipality of Anchorage															
Labor Force	revised 157,275	revised 156,926	revised 155,566	preliminary 155,392									156,290	157,120	(830)
Employment	148,567	148,914	147,987	147,834									148,326	147,930	395
Unemployment	8,708	8,012	7,579	7,558									7,964	9,189	(1,225)
Unemployment Rate	5.5%	5.1%	4.9%	4.9%									5.1%	5.8%	-0.8%
Mat-Su Borough															
Labor Force	44,213	44,004	43,489	43,160									43,717	44,268	(551)
Employment	40,288	40,382	40,130	40,089									40,222	40,115	108
Unemployment	3,925	3,622	3,359	3,071									3,494	4,153	(659)
Unemployment Rate	8.9%	8.2%	7.7%	7.1%									8.0%	9.4%	-1.4%
Kenai Peninsula Borough															
Labor Force	26,413	26,491	26,735	26,996									26,659	26,631	28
Employment	23,879	24,123	24,546	24,982									24,383	23,973	410
Unemployment	2,534	2,368	2,189	2,014									2,276	2,658	(382)
Unemployment Rate	9.6%	8.9%	8.2%	7.5%									8.5%	10.0%	-1.4%
Southcentral Region															
Labor Force	227,901	227,421	225,790	225,548									226,665	228,018	(1,353)
Employment	212,734	213,419	212,663	212,905									212,930	212,018	913
Unemployment	15,167	14,002	13,127	12,643									13,735	16,000	(2,266)
Unemployment Rate	6.7%	6.2%	5.8%	5.6%									6.1%	7.0%	-1.0%
State of Alaska															
Labor Force	361,085	362,187	360,100	359,731									360,776	362,790	(2,014)
Employment	333,414	336,610	336,463	337,020									335,877	334,464	1,413
Unemployment	27,671	25,577	23,637	22,711									24,899	28,326	(3,427)
Unemployment Rate	7.7%	7.1%	6.6%	6.3%									6.9%	7.8%	-0.9%

*Note: These numbers reflect employment, unemployment, etc. for only those people that are residence of the specified City/Region, thus are not inclusive of people who commute to another city for their jobs. (Ex: Someone lives in Wasilla but works in Anchorage. They would be counted in the Mat-Su Borough's labor force and employment numbers, not the Municipality of Anchorage numbers)

INDUSTRY EMPLOYMENT ESTIMATES 2013

Municipality of Anchorage

Industry	Jan	Feb	Mar	Apr	May	Jun	Jul	Aug	Sep	Oct	Nov	Dec	2013 YTD Avg.	2012 YTD Avg.	2013 vs 2012 YTD Change	% Change	
Total Nonfarm	revised 153,000	revised 154,300	revised 154,900	preliminary 156,500										154,675	153,100	1,575	1.03%
Goods Producing	13,300	13,400	13,300	13,800										13,450	12,350	1,100	8.91%
Services Providing	139,600	141,000	141,600	142,800										141,250	140,775	475	0.34%
Mining and Logging ²	3,600	3,700	3,700	3,700										3,675	3,125	550	17.60%
Oil & Gas	3,500	3,500	3,500	3,500										3,500	3,000	500	16.67%
Construction	7,500	7,500	7,400	7,800										7,550	7,250	300	4.14%
Manufacturing	2,200	2,200	2,200	2,300										2,225	1,975	250	12.66%
Trade/Transportation/Utilities	32,000	31,900	31,900	32,200										32,000	31,975	25	0.08%
Wholesale Trade	4,300	4,300	4,400	4,400										4,350	4,425	-75	-1.69%
Retail Trade	16,900	16,700	16,600	16,800										16,750	16,725	25	0.15%
Trans/Warehouse/Utilities	10,800	10,900	10,900	11,000										10,900	10,825	75	0.69%
Air Transportation	2,900	2,900	2,900	2,900										2,900	2,875	25	0.87%
Information	3,800	3,800	3,800	3,800										3,800	3,900	-100	-2.56%
Financial Activities	7,900	8,000	8,000	8,100										8,000	8,025	-25	-0.31%
Professional & Business Svcs	19,500	19,700	19,600	19,900										19,675	19,175	500	2.61%
Educational & Health Services	24,900	25,100	25,300	25,600										25,225	24,450	775	3.17%
Health Care	18,200	18,300	18,400	18,400										18,325	17,800	525	2.95%
Leisure & Hospitality	16,100	16,400	16,800	16,900										16,550	16,250	300	1.85%
Accommodation	3,100	3,200	3,200	3,200										3,175	3,100	75	2.42%
Food Svcs & Drinking Places	10,800	11,000	11,200	11,500										11,125	10,975	150	1.37%
Other Services	5,600	5,600	5,700	5,600										5,625	5,700	-75	-1.32%
Government	29,800	30,600	30,500	30,800										30,425	31,225	-800	-2.56%
Federal Government	8,900	8,800	8,800	8,800										8,825	9,250	-425	-4.59%
State Government	10,200	11,000	11,000	11,100										10,825	10,700	125	1.17%
State Education	2,100	3,000	2,900	3,000										2,750	2,700	50	1.85%
Local Government	10,800	10,800	10,700	10,900										10,800	11,325	-525	-4.64%
Local Education	8,000	8,000	7,900	7,900										7,950	8,475	-525	-6.19%

- Nonfarm Wage & Salary excludes self-employed workers, fishers, domestics, and unpaid family workers.

- All totals are seasonally non-adjusted totals.

- Government includes employees of public school systems and the University of Alaska.

- Beginning January 2001, wage and salary employment estimates were published under a new classification system. The Standard Industrial Classification system (SIC) has been replaced by the North American Industry Classification System (NAICS). Data prior to 2001 are comparable only at the Total Nonfarm and Government levels.

^{1/} As of January 2001, certain federally-recognized tribal entities were moved to Local Government, which created a series break for Total Government and Local Government. Please see the April 2002 Alaska Economic Trends publication for a detailed explanation.

^{2/} This category was called "Natural Resources and Mining" in previous years. The change is in name only; the industries it includes remain the same.

- Some totals may not equal components due to rounding.

- Source: Alaska Department of Labor and Workforce Development, Research and Analysis Section

* Note: The above numbers are representative of all people employed in the Municipality of Anchorage, this is inclusive of workers who claim residence outside of the Municipality of Anchorage. (Ex: someone who lives in the Mat-Su, but works in Anchorage would be included in these number)

Quick Comparisons

13 vs 12	1,600	1.03%
Apr.		
13 vs 12	1,567	1.03%
1st Qtr		
13 vs 12		
2nd Qtr		
13 vs 12		
3rd Qtr		
13 vs 12		
4th Qtr		

INDUSTRY EMPLOYMENT ESTIMATES 2013

State of Alaska

Industry	Jan revised	Feb revised	Mar revised	Apr preliminary	May	Jun	Jul	Aug	Sep	Oct	Nov	Dec	2013 YTD Avg.	2012 YTD Avg.	2013 vs 2012 YTD Change	% Change
Total Nonfarm	314,200	321,400	323,800	326,400									321,450	319,975	1,475	0.46%
Goods Producing	40,100	42,900	43,500	43,700									42,550	42,150	400	0.95%
Services Providing	274,100	278,500	280,300	282,700									278,900	277,825	1,075	0.39%
Mining and Logging ²	16,600	17,100	17,300	17,500									17,125	15,975	1,150	7.20%
Mining	16,400	16,800	16,900	17,100									16,800	15,750	1,050	6.67%
Oil & Gas	13,600	13,900	14,000	14,100									13,900	13,000	900	6.92%
Construction	14,300	14,900	15,000	15,600									14,975	13,600	1,375	10.11%
Manufacturing	9,200	10,900	11,100	10,600									10,450	12,575	-2,125	-16.90%
Seafood Processing	7,200	9,100	7,400	6,700									7,600	9,175	-1,575	-17.17%
Trade/Transportation/Utilities	61,000	60,400	61,000	62,200									61,150	60,125	1,025	1.70%
Wholesale Trade	5,900	5,800	5,900	5,900									5,875	6,025	-150	-2.49%
Retail Trade	34,800	34,100	34,400	35,200									34,625	34,300	325	0.95%
Food & Beverage Stores	6,100	6,100	6,000	6,000									6,050	5,975	75	1.26%
General Merchandise Stores	9,800	9,500	9,700	9,800									9,700	9,675	25	0.26%
Trans/Warehouse/Utilities	20,300	20,500	20,700	21,100									20,650	19,800	850	4.29%
Air Transportation	5,500	5,400	5,500	5,600									5,500	5,500	0	0.00%
Information	6,000	6,100	6,100	6,000									6,050	6,200	-150	-2.42%
Telecommunications	3,900	3,900	3,900	3,900									3,900	4,150	-250	-6.02%
Financial Activities	12,900	13,000	13,100	13,000									13,000	13,075	-75	-0.57%
Professional & Business Svcs	27,000	27,900	27,200	27,900									27,500	27,425	75	0.27%
Educational & Health Services	47,000	47,400	47,700	47,900									47,500	45,900	1,600	3.49%
Health Care	33,400	33,500	33,800	33,500									33,550	32,475	1,075	3.31%
Leisure & Hospitality	27,800	28,400	29,400	29,500									28,775	28,975	-200	-0.69%
Accommodation	6,500	6,500	6,600	6,700									6,575	6,275	300	4.78%
Food Svcs & Drinking Places	17,600	18,100	18,700	18,800									18,300	18,700	-400	-2.14%
Other Services	11,200	11,200	11,400	11,400									11,300	11,375	-75	-0.66%
Government	81,200	84,100	84,400	84,800									83,625	84,750	-1,125	-1.33%
Federal Government	14,800	14,700	14,900	15,100									14,875	16,200	-1,325	-8.18%
State Government	24,500	26,700	26,800	26,900									26,225	26,050	175	0.67%
State Education	6,600	8,800	8,700	8,700									8,200	8,150	50	0.61%
Local Government	41,900	42,700	42,700	42,800									42,525	42,500	25	0.06%
Local Education	23,600	24,300	24,100	24,100									24,025	24,825	-800	-3.22%
Tribal Government ¹	3,400	3,400	3,500	3,400									3,425	3,450	-25	-0.72%

¹ - Nonfarm Wage & Salary excludes self-employed workers, fishers, domestics, and unpaid family workers.

- All totals are non-seasonally adjusted totals.

- Government includes employees of public school systems and the University of Alaska.

- Beginning January 2001, wage and salary employment estimates were published under a new classification system. The Standard Industrial Classification system (SIC) has been replaced by the North American Industry Classification System (NAICS). Data prior to 2001 are comparable only at the Total Nonfarm and Government levels.

² / As of January 2001, certain federally-recognized tribal entities were moved to Local Government, which created a series break for Total Government and Local Government. Please see the April 2002 Alaska Economic Trends publication for a detailed explanation.

³ / This category was called "Natural Resources and Mining" in previous years. The change is in name only; the industries it includes remain the same.

- Totals may not equal sub-sections due to rounding.

- Source: Alaska Department of Labor and Workforce Development, Research and Analysis Section

Quick Comparisons	
13 vs 12 Apr.	200
13 vs 12 1st Qtr	1,900
13 vs 12 2nd Qtr	
13 vs 12 3rd Qtr.	
13 vs 12 4th Qtr	

Dianne Blumer
Commissioner
P.O. Box 111149
Juneau, AK 99811-1149
www.labor.alaska.gov



Beth Leschper
Communications Director
907.465.2700
cell: 907.723.1321
beth.leschper@alaska.gov

Press Release

COMMISSIONER'S OFFICE

May 17, 2013

No. 13-26

Unemployment rate at 6.0 percent in April

Alaska's seasonally adjusted unemployment rate was 6.0 percent in April, down two-tenths of a percentage point from March. The comparable U.S. rate was 7.5 percent.

Alaska's seasonally adjusted unemployment rate has been falling overall since 2010 and is approaching pre-recession lows. The last time Alaska's seasonally adjusted unemployment rate was at 6.0 percent was in mid-2007.

The not-seasonally adjusted unemployment rate for April was 6.3 percent, down three-tenths of a percentage point from March's 6.6 percent. Rate declines of a larger magnitude are more common between March and April as summer seasonal employment starts to pick up, but the smaller decline this April was likely due to the larger-than-average decline from February to March of this year.

Not-seasonally adjusted rates fell in April in nearly all of Alaska's boroughs and census areas. The exceptions were Nome Census Area and the Municipality of Anchorage, where they were unchanged, and Kodiak Island Borough and the Aleutians West and Bethel census areas, where they rose. The rate increases in Kodiak Island Borough and Aleutians West Census Area were due to typical reductions in seasonal winter fisheries jobs.

Rates in the Municipality of Skagway, Denali Borough, and Hoonah-Angoon Census Area declined more than four percentage points from March, concurrent with the ramp-up for summer tourism.

Contact: Caroline Schultz, Economist (907) 465-6027
Research and Analysis Web site: <http://laborstats.alaska.gov>



Unemployment Rates, Seasonally Adjusted			
	4/13	3/13	4/12
Alaska	6.0%	6.2%	7.0%
U.S.	7.5%	7.6%	8.1%

Sources for graph and table: Alaska Department of Labor and Workforce Development, Research and Analysis Section; and U.S. Bureau of Labor Statistics

For detailed employment estimates, see <http://live.laborstats.alaska.gov/ces/>. The estimates are preliminary and subject to potentially large revisions.

Labor Force by Borough and Census Area, Not Seasonally Adjusted¹

	Civilian Labor Force			Unemployed					
	4/13 ^P	3/13	4/12	Number			Rate		
				4/13 ^P	3/13	4/12	4/13 ^P	3/13	4/12
Alaska Statewide	359,731	360,100	361,886	22,711	23,637	25,905	6.3	6.6	7.2
Anchorage/Mat-Su Region	198,552	199,055	199,952	10,629	10,938	12,312	5.4	5.5	6.2
Anchorage, Municipality of	155,392	155,566	156,295	7,558	7,579	8,683	4.9	4.9	5.6
Matanuska-Susitna Borough	43,160	43,489	43,657	3,071	3,359	3,629	7.1	7.7	8.3
Gulf Coast Region	38,867	38,519	38,700	2,787	2,986	3,204	7.2	7.8	8.3
Kenai Peninsula Borough	26,996	26,735	26,913	2,014	2,189	2,344	7.5	8.2	8.7
Kodiak Island Borough	6,960	7,002	6,925	332	322	398	4.8	4.6	5.7
Valdez-Cordova Census Area	4,911	4,782	4,862	441	475	462	9.0	9.9	9.5
Interior Region	53,432	53,026	53,813	3,467	3,623	4,030	6.5	6.8	7.5
Denali Borough	782	761	810	125	154	150	16.0	20.2	18.5
Fairbanks North Star Borough	46,158	45,816	46,424	2,544	2,629	2,998	5.5	5.7	6.5
Southeast Fairbanks Census Area	3,304	3,318	3,327	353	380	384	10.7	11.5	11.5
Yukon-Koyukuk Census Area	3,188	3,131	3,252	445	460	498	14.0	14.7	15.3
Northern Region	13,181	13,196	12,650	1,135	1,166	1,230	8.6	8.8	9.7
Nome Census Area	4,341	4,375	4,149	456	460	473	10.5	10.5	11.4
North Slope Borough	5,736	5,733	5,476	253	262	275	4.4	4.6	5.0
Northwest Arctic Borough	3,104	3,088	3,025	426	444	482	13.7	14.4	15.9
Southeast Region	38,087	37,362	38,922	2,357	2,612	2,694	6.2	7.0	6.9
Haines Borough	1,187	1,130	1,213	97	113	116	8.2	10.0	9.6
Hoonah-Angoon Census Area	877	821	907	160	183	179	18.2	22.3	19.7
Juneau, City and Borough of	18,066	18,102	18,406	791	835	886	4.4	4.6	4.8
Ketchikan Gateway Borough	7,621	7,302	7,773	501	537	550	6.6	7.4	7.1
Petersburg Census Area	1,586	1,537	1,612	141	182	149	8.9	11.8	9.2
Prince of Wales-Hyder Census Area	2,344	2,224	2,438	286	296	355	12.2	13.3	14.6
Sitka, City and Borough of	4,598	4,531	4,703	209	240	248	4.5	5.3	5.3
Skagway, Municipality of	529	499	545	77	97	86	14.6	19.4	15.8
Wrangell, City and Borough of	1,007	975	1,043	73	100	98	7.2	10.3	9.4
Yakutat, City and Borough of	272	241	282	22	29	27	8.1	12.0	9.6
Southwest Region	17,614	18,941	17,849	2,337	2,313	2,433	13.3	12.2	13.6
Aleutians East Borough	1,476	1,315	1,511	109	109	130	7.4	8.3	8.6
Aleutians West Census Area	2,848	4,278	2,925	253	204	301	8.9	4.8	10.3
Bethel Census Area	6,859	7,035	6,880	1,072	1,071	1,053	15.6	15.2	15.3
Bristol Bay Borough	560	455	578	39	40	51	7.0	8.8	8.8
Dillingham Census Area	2,133	2,167	2,170	191	198	205	9.0	9.1	9.4
Lake and Peninsula Borough	988	949	1,013	84	91	98	8.5	9.6	9.7
Wade Hampton Census Area	2,750	2,742	2,772	589	600	595	21.4	21.9	21.5

P = Preliminary. As more information becomes available, data are revised every month for the previous month and again at the end of every calendar year.

Note: The official definition of unemployment excludes anyone who has not made an active attempt to find work in the four-week period up to and including the week that includes the 12th of the reference month. Many in rural Alaska do not meet the definition because they have not conducted an active job search due to the scarcity of employment opportunities.

¹Unemployment rates that are not seasonally adjusted should not be compared with those that are.

Source: Alaska Department of Labor and Workforce Development, Research and Analysis Section; and U.S. Bureau of Labor Statistics

