



AEDC  
Anchorage Economic  
Development Corporation

# July 2013 Employment Report

**4.9%**

July Unemployment Rate  
for Anchorage

  
anchorage™  
big wild life

## MONTHLY UNEMPLOYMENT

The unemployment rate for Anchorage in July was **4.9 percent**, down 0.4 percent from June. June's unemployment rate was revised down 0.1 percent from 5.4 to 5.3. This month to month decrease is typical for July, and in the last ten years, this change has ranged from -0.4 to -0.8 percent. July is usually the beginning of a downward trend in the unemployment rate each year and is a good indicator of where the annual rate will be.

In the last two decades, the July rate has been within 0.3 percent of the year's annual rate. As always, it should be noted that these are preliminary survey figures for July and will be revised next month and will see further revisions in early 2014 upon more detailed analysis.

## YEAR-TO-DATE UNEMPLOYMENT

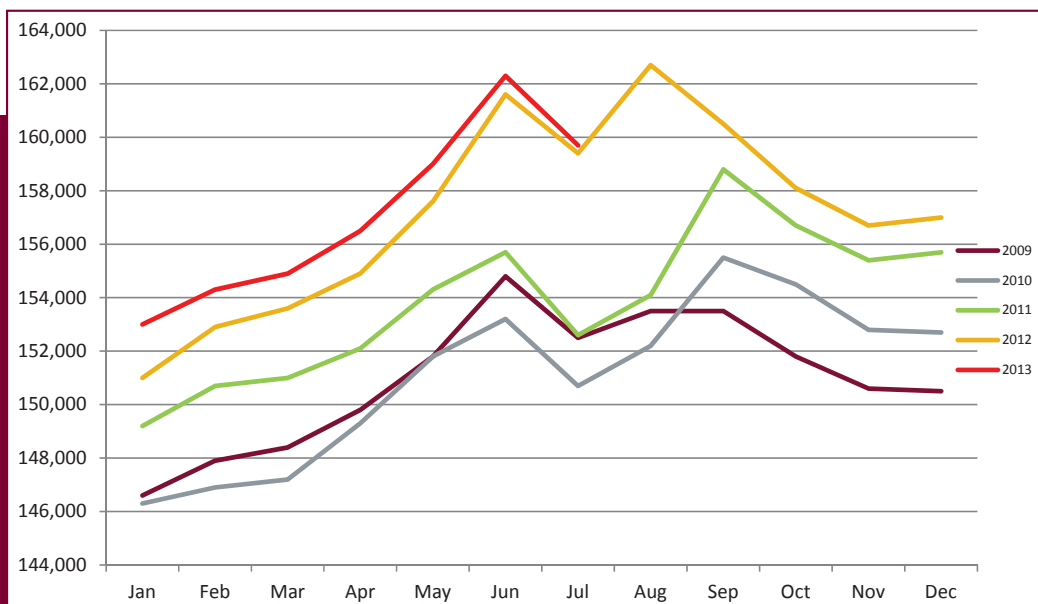
The average year-to-date (YTD) **non-seasonally adjusted unemployment rate in Anchorage was 5.0 percent**, down 0.1 from June and 0.8 percent lower than the 2012 YTD average. An increase of 307 in the employment total and a decrease of 898 in the Anchorage labor force during the YTD period has **resulted in a reduction of 1,243 people** in the reported unemployment total. The total **number of unemployed people in Anchorage is estimated at 7,692** (those actively looking for jobs), more than 1,000 less than July 2012. In the Mat-Su and Kenai Peninsula Boroughs, the monthly unemployment rate has decreased 15 and 14 percent, respectively, from 2012 YTD (see the charts at the end of this report for more details).

It is important to note that these Anchorage unemployment numbers represent the labor force residing in Anchorage, and do not include jobs in Anchorage held by residents from outside the municipality. The industry employment estimates referenced in the remainder of this report are representative of all jobs in the Municipality of Anchorage, regardless of the job holder's place of residency.

## ANCHORAGE INDUSTRY EMPLOYMENT ESTIMATES

As for Anchorage industry employment estimates, the YTD average is continuing to show improvement over 2012 with a total net increase of 1,243 jobs so far. The private sector (total jobs minus government jobs) has grown by more than 2,000 jobs during this time, equaling a rate of 1.6 percent. Government employment has declined by 800 jobs so far, with losses evenly split between federal and local education sectors.

Industries showing the largest YTD growth rates are mainly in the goods producing category, which includes oil & gas, manufacturing and construction. Of service providing industries, Educational & Health Services is leading the way with a 3.14 percent YTD growth rate. Five of the ten major sector's July 2013 averages are at or above June, indicating that the rate of job growth is leveling off.



**ANCHORAGE EMPLOYMENT**  
Municipality of Anchorage  
2009-Present

## MONTHLY REVISIONS

Each month, the Alaska Department of Labor's Research and Analysis Division revises the previous month employment numbers based on the availability of newer or late arriving data. The following tables show the changes in Anchorage's and Alaska's June job totals by industry. Most adjustments are relatively minor; however, some changes do occur which are significant. Changes such as these are normally the result of rounding errors, job classification modifications, sample size or modeling issues, or errors within the industry.

### JUNE 2013 REVISIONS, ANCHORAGE

Industry	Preliminary Total	Revised Total	Net Change
Total Nonfarm	163,300	162,300	-1,000
Goods Producing	16,100	15,900	-200
Services Producing	147,200	146,400	-800
Construction	9,700	9,500	-200
Manufacturing	2,600	2,500	-100
Trade, Transportation, Utilities	34,000	33,800	-200
Trans/Warehouse/Utilities	12,000	11,800	-200
Information	3,900	3,800	-100
Professional & Business Services	20,900	21,100	+200
Educational & Health Services	25,800	25,500	-300
Leisure & Hospitality	18,100	18,000	-100
Accommodation	3,400	3,200	-200
Food Services & Drinking Places	12,100	12,200	+100
Other Services	5,900	5,800	-100
Government	30,100	30,000	-100

### JUNE 2013 REVISIONS, ALASKA

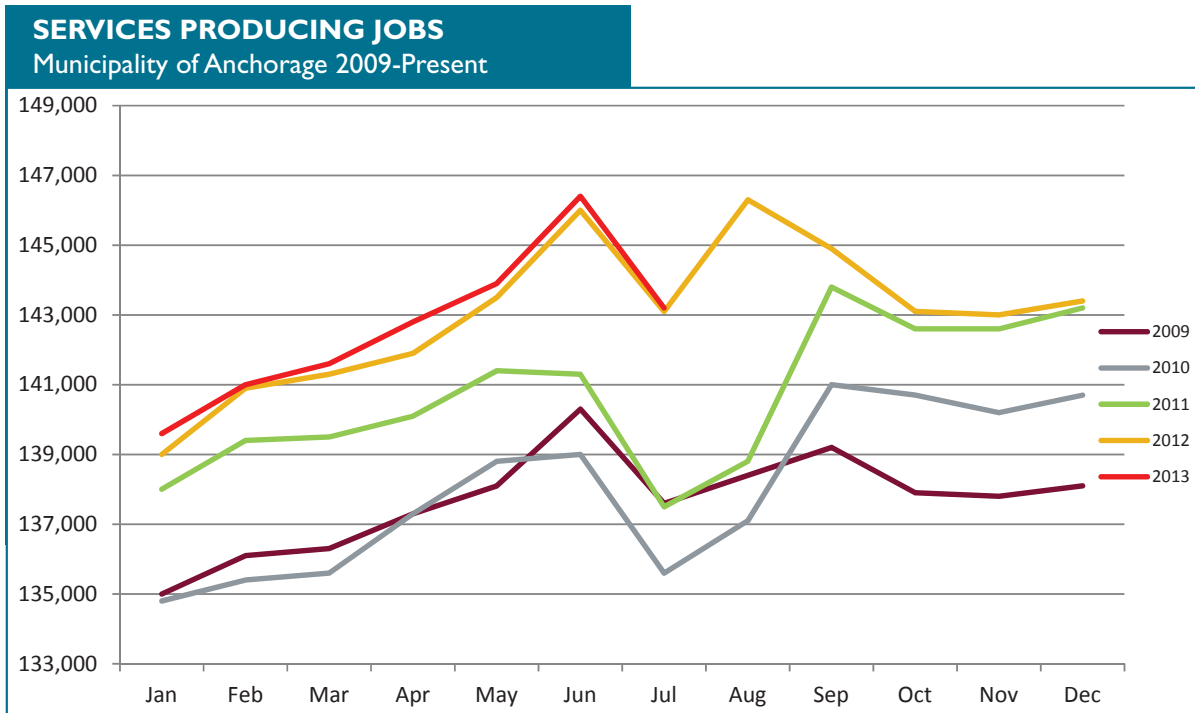
Industry	Preliminary Total	Revised Total	Net Change
Total Nonfarm	352,800	352,400	-400
Goods Producing	53,700	53,400	-300
Services Providing	299,100	299,000	-100
Mining and Logging	18,400	18,300	-100
Mining	17,800	17,700	-100
Manufacturing	15,400	15,200	-200
Seafood Processing	11,200	11,000	-200
Trade, Transportation, Utilities	68,700	68,800	+100
Retail Trade	38,100	38,000	-100
Food & Beverage Stores	6,200	6,300	+100
General Merchandise Stores	10,400	10,300	-100
Trans/Warehouse/Utilities	24,500	24,700	+200
Air Transportation	6,800	6,400	-400
Professional & Business Services	29,500	29,300	-200
Health Care	34,200	34,100	-100
Leisure & Hospitality	38,600	38,700	100
Food Services & Drinking Places	22,400	22,500	+100
Other Services	11,700	11,800	+100
Government	82,900	82,700	-200
Federal Government	15,600	15,400	-200
Tribal Government	3,700	3,600	-100

# SERVICES PRODUCING JOBS

ENGINEERING, RETAIL, TOURISM, HEALTH CARE, ETC.

Services producing jobs in Anchorage totaled **143,200** for July. Overall, the YTD average is up 400 jobs from 2012 YTD.

The **educational and health services sector's growth rate is 3.14 percent so far this year**, making it the highest growth sector in the service industry. Jobs in the leisure and hospitality sector are growing at twice the rate of the overall totals at 1.79 percent. Both accommodation and food service sectors are seeing growth, indicating a positive trend in the tourism industry. Federal and local government sectors are both averaging less than this point last year (both 443 less jobs), but the state government jobs average is up 57 jobs YTD from 2012.



## SERVICES PRODUCING JOBS

Increase of Services Producing Jobs YTD

**400**

---

**142,600**

Services Producing Jobs in Anchorage for July 2013 (total)

JULY 12 vs. JULY 13  
YEAR TO DATE

**Educational & Health Services**

**+770**

**Professional & Business Services**

**+410**

**Information**

**-110**

**Leisure & Hospitality**

**+300**

**Retail**

**+30**

**Government**

**-790**

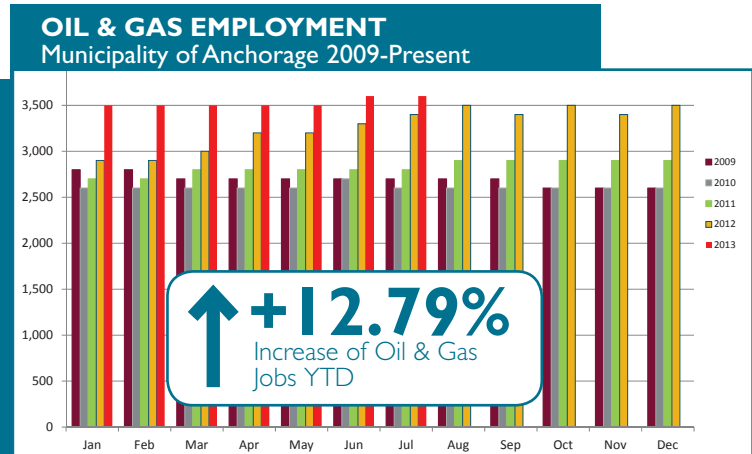
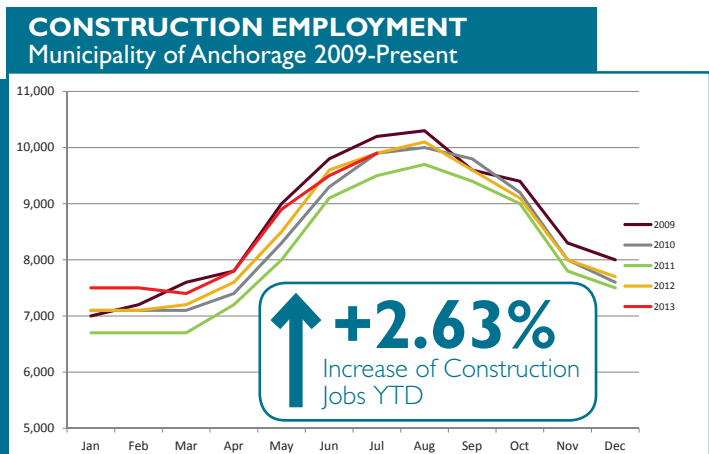
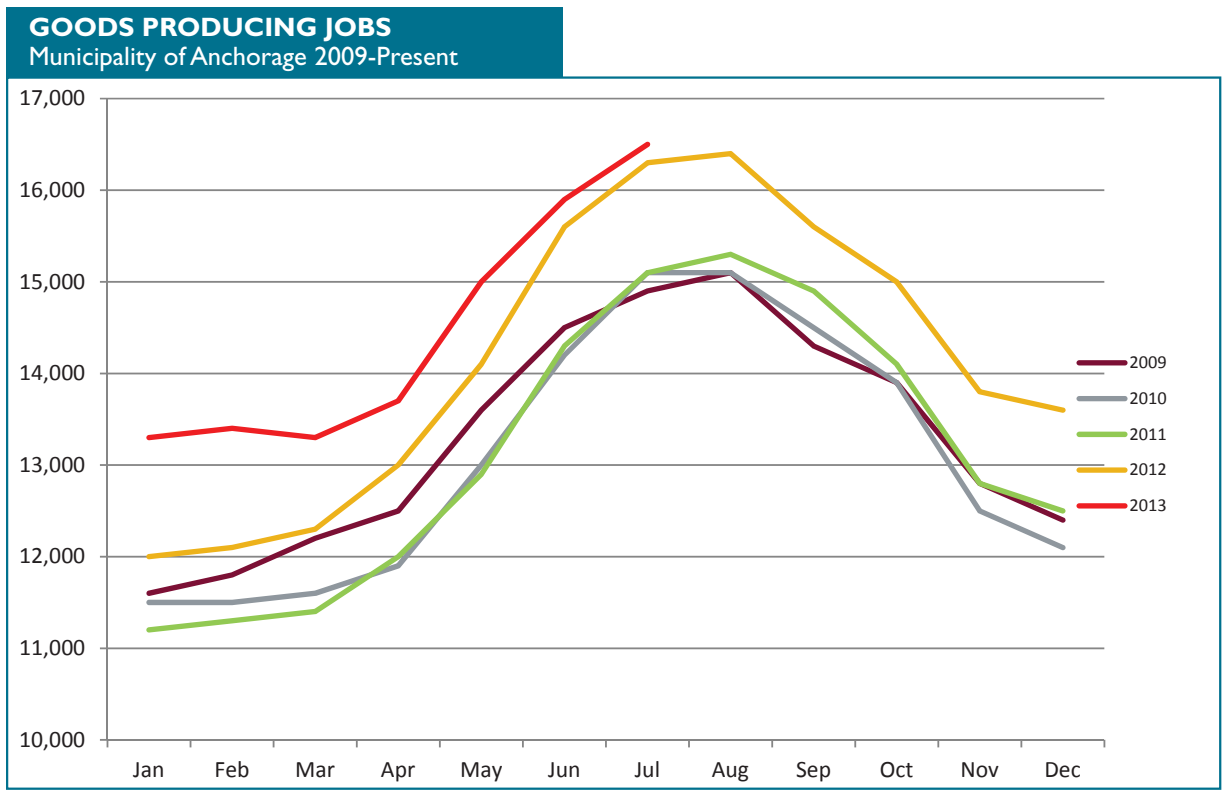
# GOODS PRODUCING JOBS

## CONSTRUCTION WORK, MINING, OIL & GAS PRODUCTION, MANUFACTURING

Goods producing jobs (those jobs that are specifically tied to production, not those which support the production or maintenance of the production jobs) are maintaining the growth seen all year, averaging **814 more jobs in 2013 YTD over the same period in 2012.**

The oil & gas sector is leading the way with 400 more jobs than last year at this point; a growth rate of nearly 13 percent. Positive signs in the industry include Hilcorp's reactivation of the Baker platform in Cook Inlet to produce oil, the positive initial results for Bucanmeer at the Cosmopolitan prospect offshore near Anchor Point, and BP's development plans for the Sag River area at Prudhoe Bay.

The construction industry is also seeing higher job numbers in July, averaging 214 more jobs over 2012 YTD. Municipal building permit valuations remain very high and are up more than 40 percent YTD from last year, indicating that the strong start to the construction season continued through the summer. New permits applied for in July include renovations at Service High School (\$2.1 million) and further development of the municipality's John M. Asplund Wastewater Treatment Facility (\$9.1 million).

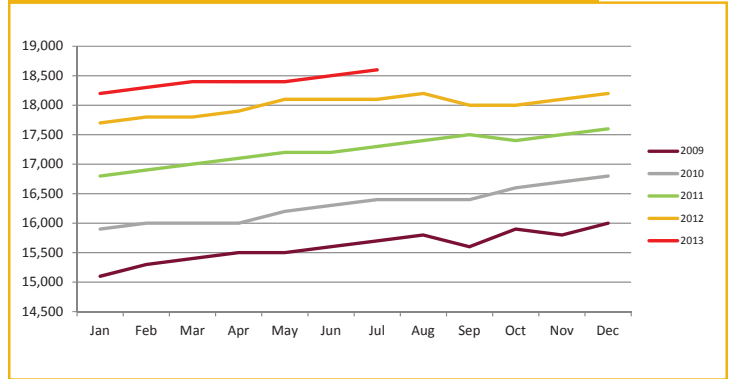


# ••••• SERVICES PRODUCING JOBS SUMMARY

## HEALTH CARE EMPLOYMENT

The health care industry is still going strong, with **471 MORE JOBS** over 2012 YTD. The 2.63 percent YTD job growth in the local health care sector is below the 2012 end of year rate, but is still one of the fastest growing service producing industries. *If this trend continues through 2013, the sector will beat AEDC's January projection of 400 additional health care jobs.* Health care has been identified by the state Department of Labor as the industry with the highest growth potential in Alaska for the next decade.

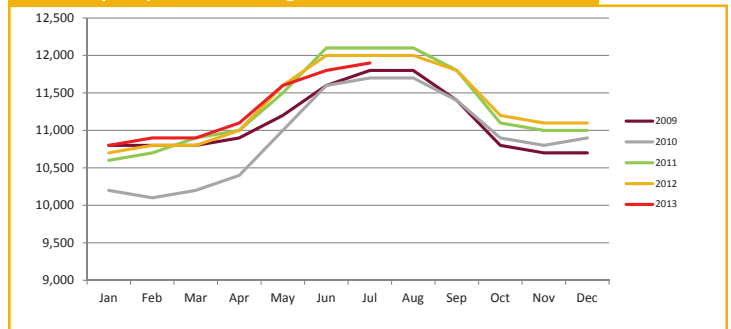
**HEALTH CARE EMPLOYMENT**  
Municipality of Anchorage 2009-Present



## TRANSPORTATION

July's estimate of 11,900 jobs is slightly below 2012 by 100, but the YTD average is nearly unchanged with 14 more jobs. Decreasing amounts of cargo transiting through the Ted Stevens Anchorage International Airport and the Alaska Railroad have stunted job growth for most of the year and this sector will be hard pressed to reach AEDC's January estimate of an additional 100 jobs by the end of the year.

**TRANSPORTATION EMPLOYMENT**  
Municipality of Anchorage 2009-Present



## PROFESSIONAL & BUSINESS SERVICES

ENGINEERING, ARCHITECTURE, LEGAL SERVICES, ACCOUNTING, SCIENTIFIC RESEARCH, WASTE MANAGEMENT & ADMINISTRATIVE SERVICES

**The YTD average is up 414 jobs from 2012 and the rate of increase is one of the largest of all service providing industries at 2.1 percent.**

Job growth within this industry is often tied to growth in other industries such as oil & gas, construction and transportation. As these goods producing industries continue to grow, more positions in professional and business services are expected.

**PROFESSIONAL & BUSINESS SERVICES EMPLOYMENT**  
Municipality of Anchorage 2009-Present

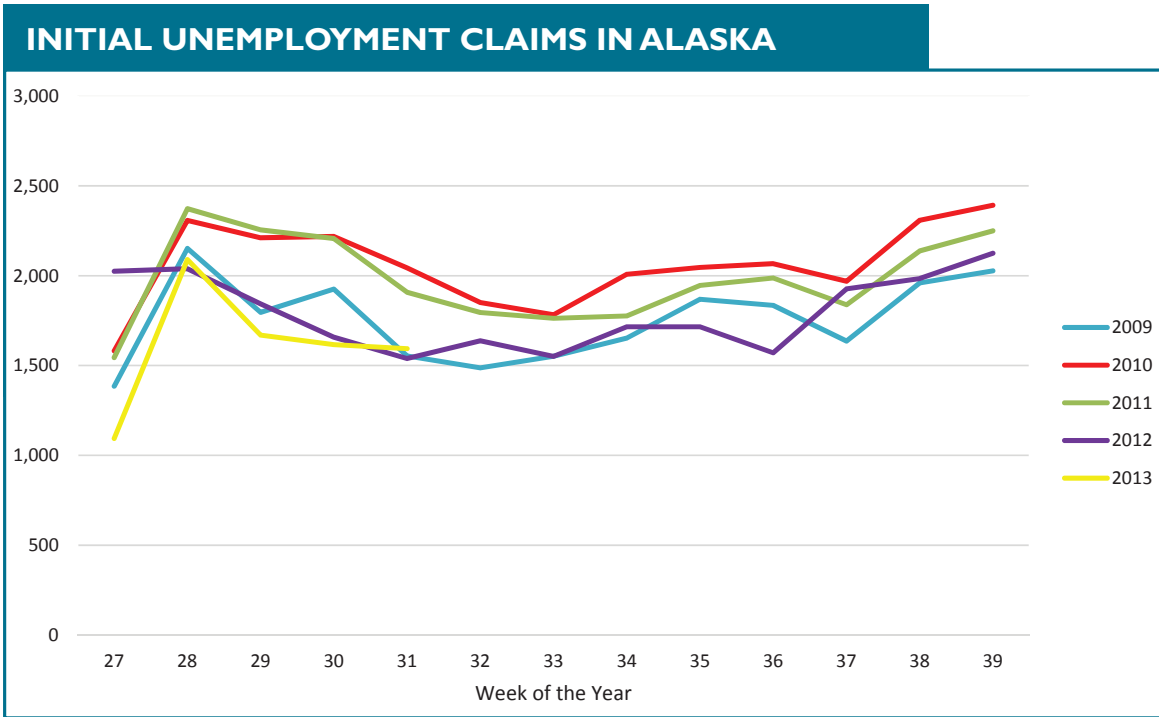


↑ Increase of Professional & Business Services Jobs  
**410**  
YTD

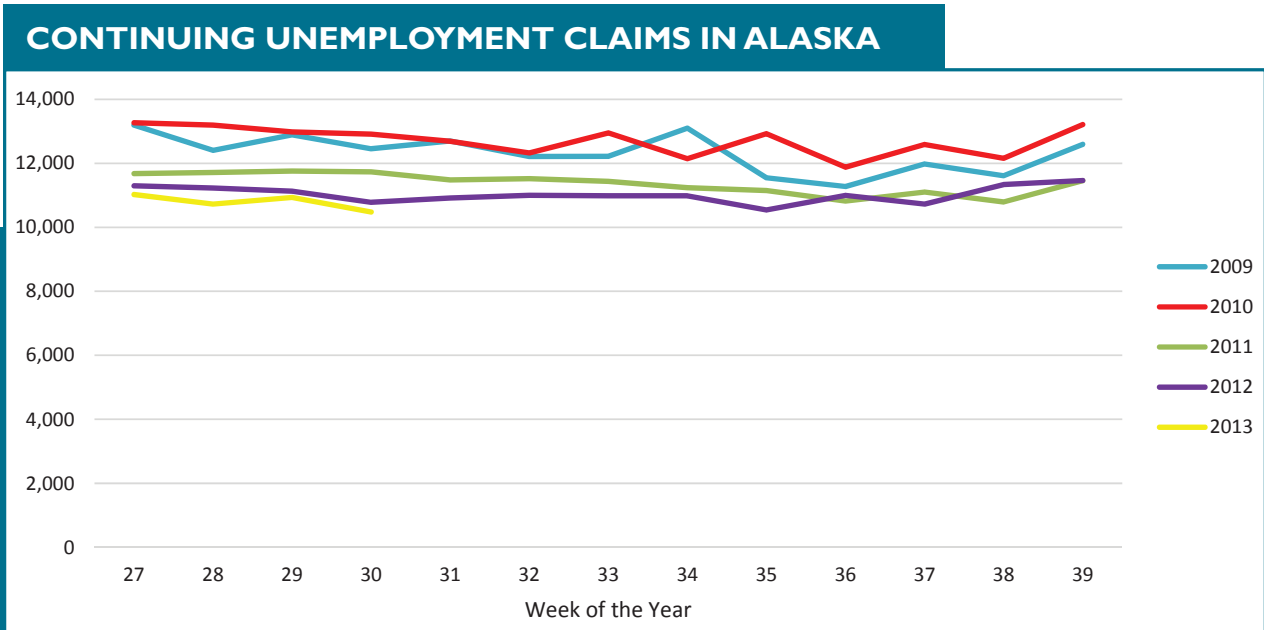
↑ **2.28%**  
Increase of Professional & Business Services Jobs  
YTD

# UNEMPLOYMENT CLAIMS

Initial unemployment claim applications can be interpreted as a proxy for layoffs. They tend to fall as job growth accelerates.



Continuing claims figures helps to show how well unemployed workers are re-entering the workforce. This total does not include workers receiving extended benefits from the federal government. The third quarter numbers are still tracking below the previous four years, ending July with 10,479 claimants. Initial claims are continue to trend down and ended the month at 1,616 and are likely to stay close to this level for the next four to five weeks before the annual upward movement in early September.



All data referenced in this employment report is from the State of Alaska, Dept. of Labor & Workforce Development website: [www.laborstats.alaska.gov](http://www.laborstats.alaska.gov)

# UNEMPLOYMENT ANALYSIS (YTD, 2013)

## Anchorage, Mat-Su, Kenai Peninsula Borough

	Jan	Feb	Mar	Apr	May	Jun	Jul	Aug	Sep	Oct	Nov	Dec	13 YTD Avg	12 YTD Avg	13 vs 12
Municipality of Anchorage	revised	revised	revised	revised	revised	revised	preliminary								
Labor Force	157,275	156,926	155,566	155,408	154,851	156,405	155,685						156,017	156,914	(898)
Employment	148,567	148,914	147,987	147,673	147,596	148,134	147,993						148,123	147,817	307
Unemployment	8,708	8,012	7,579	7,467	7,255	8,271	7,692						7,855	9,098	(1,243)
Unemployment Rate	5.5%	5.1%	4.9%	4.8%	4.7%	5.3%	4.9%						5.0%	5.8%	-0.8%
<b>Mat-Su Borough</b>															
Labor Force	44,213	44,004	43,489	43,078	42,772	43,262	43,014						43,405	43,933	(528)
Employment	40,288	40,382	40,130	40,045	40,024	40,170	40,132						40,167	40,084	84
Unemployment	3,925	3,622	3,359	3,033	2,748	3,092	2,882						3,237	3,849	(612)
Unemployment Rate	8.9%	8.2%	7.7%	7.0%	6.4%	7.1%	6.7%						7.5%	8.8%	-1.3%
<b>Kenai Peninsula Borough</b>															
Labor Force	26,413	26,491	26,735	26,919	27,912	29,309	29,913						27,670	27,730	(59)
Employment	23,879	24,123	24,546	24,928	26,072	27,284	28,073						25,558	25,243	315
Unemployment	2,534	2,368	2,189	1,991	1,840	2,025	1,840						2,112	2,487	(375)
Unemployment Rate	9.6%	8.9%	8.2%	7.4%	6.6%	6.9%	6.2%						7.6%	9.0%	-1.3%
<b>Southcentral Region</b>															
Labor Force	227,901	227,421	225,790	225,405	225,535	228,976	228,612						227,091	228,576	(1,485)
Employment	212,734	213,419	212,663	212,646	213,692	215,588	216,198						213,849	213,143	706
Unemployment	15,167	14,002	13,127	12,491	11,843	13,388	12,414						13,205	15,434	(2,229)
Unemployment Rate	6.7%	6.2%	5.8%	5.5%	5.3%	5.8%	5.4%						5.8%	6.8%	-0.9%
<b>State of Alaska</b>															
Labor Force	361,085	362,187	360,100	359,422	363,918	371,481	373,700						364,556	366,832	(2,276)
Employment	333,414	336,610	336,463	336,984	342,375	347,274	351,480						340,657	339,556	1,101
Unemployment	27,671	25,577	23,637	22,438	21,543	24,207	22,220						23,899	27,276	(3,377)
Unemployment Rate	7.7%	7.1%	6.6%	6.2%	5.9%	6.5%	5.9%						6.6%	7.4%	-0.9%

**\*Note:** These numbers reflect employment, unemployment, etc. for only those people that are residence of the specified City/Region, thus are not inclusive of people who commute to another city for their jobs. (Ex: Someone lives in Wasilla but works in Anchorage. They would be counted in the Mat-Su Borough's labor force and employment numbers, not the Municipality of Anchorage numbers)



# INDUSTRY EMPLOYMENT ESTIMATES 2013

## Municipality of Anchorage

Industry	Jan	Feb	Mar	Apr	May	Jun	Jul	Aug	Sep	Oct	Nov	Dec	2013 YTD Avg.	2012 YTD Avg.	2013 vs 2012 YTD Change	% Change
	revised	revised	revised	revised	revised	revised	preliminary									
Total Nonfarm	153,000	154,300	154,900	156,500	159,000	162,300	159,700						157,100	155,857	1,243	0.80%
Goods Producing	13,300	13,400	13,300	13,700	15,000	15,900	16,500						14,443	13,629	814	5.97%
Services Providing	139,600	141,000	141,600	142,800	143,900	146,400	143,200						142,643	142,243	400	0.28%
Mining and Logging <sup>2</sup>	3,600	3,700	3,700	3,700	3,700	3,800	3,800						3,714	3,286	429	13.04%
Oil & Gas	3,500	3,500	3,500	3,500	3,500	3,600	3,600						3,529	3,129	400	12.79%
Construction	7,500	7,500	7,400	7,800	8,900	9,500	9,900						8,357	8,143	214	2.63%
Manufacturing	2,200	2,200	2,200	2,300	2,400	2,500	2,800						2,371	2,200	171	7.79%
Trade/Transportation/Utilities	32,000	31,900	31,900	32,300	33,200	33,800	33,900						32,714	32,743	-29	-0.09%
Wholesale Trade	4,300	4,300	4,400	4,400	4,600	4,700	4,800						4,500	4,529	-29	-0.63%
Retail Trade	16,900	16,700	16,600	16,800	17,100	17,300	17,300						16,957	16,929	29	0.17%
Trans/Warehouse/Utilities	10,800	10,900	10,900	11,100	11,600	11,800	11,900						11,286	11,271	14	0.13%
Air Transportation	2,900	2,900	2,900	2,900	3,000	3,100	3,100						2,971	2,943	29	0.97%
Information	3,800	3,800	3,800	3,800	3,800	3,800	3,800						3,800	3,914	-114	-2.92%
Financial Activities	7,900	8,000	8,000	8,100	8,200	8,500	8,700						8,200	8,171	29	0.35%
Professional & Business Svcs	19,500	19,700	19,600	19,900	20,200	21,100	21,200						20,171	19,757	414	2.10%
Educational & Health Services	24,900	25,100	25,300	25,500	25,600	25,500	25,300						25,314	24,543	771	3.14%
Health Care	18,200	18,300	18,400	18,400	18,400	18,500	18,600						18,400	17,929	471	2.63%
Leisure & Hospitality	16,100	16,400	16,800	16,900	17,400	18,000	18,100						17,100	16,800	300	1.79%
Accommodation	3,100	3,200	3,200	3,200	3,100	3,200	3,400						3,200	3,171	29	0.90%
Food Svcs & Drinking Places	10,800	11,000	11,200	11,500	11,800	12,200	12,100						11,514	11,300	214	1.90%
Other Services	5,600	5,600	5,700	5,600	5,700	5,800	5,900						5,700	5,771	-71	-1.24%
Government	29,800	30,600	30,500	30,800	29,900	30,000	26,300						29,700	30,486	-786	-2.58%
Federal Government	8,900	8,800	8,800	8,700	8,700	8,700	8,700						8,757	9,200	-443	-4.81%
State Government	10,200	11,000	11,000	11,100	10,400	10,400	10,400						10,643	10,557	86	0.81%
State Education	2,100	3,000	2,900	3,000	2,300	2,100	2,000						2,486	2,429	57	2.35%
Local Government	10,800	10,800	10,700	11,000	10,800	10,900	7,200						10,314	10,757	-443	-4.12%
Local Education	8,000	8,000	7,900	8,100	8,000	7,900	4,300						7,457	7,886	-429	-5.43%

- Nonfarm Wage & Salary excludes self-employed workers, fishers, domestics, and unpaid family workers.

- All totals are seasonally non-adjusted totals.

- Government includes employees of public school systems and the University of Alaska.

- Beginning January 2001, wage and salary employment estimates were published under a new classification system. The Standard Industrial Classification system (SIC) has been replaced by the North American Industry Classification System (NAICS). Data prior to 2001 are comparable only at the Total Nonfarm and Government levels.

<sup>1/</sup> As of January 2001, certain federally-recognized tribal entities were moved to Local Government, which created a series break for Total Government and Local Government. [Please see the April 2002 Alaska Economic](#)

[Trends publication for a detailed explanation.](#)

<sup>2/</sup> This category was called "Natural Resources and Mining" in previous years. The change is in name only; the industries it includes remain the same.

- Some totals may not equal components due to rounding.

- Source: Alaska Department of Labor and Workforce Development, Research and Analysis Section

\* **Note:** The above numbers are representative of all people employed in the Municipality of Anchorage, this is inclusive of workers who claim residence outside of the Municipality of Anchorage. (Ex: someone who lives in the Mat-Su, but works in Anchorage would be included in these number)

### Quick Comparisons

13 vs 12 July	300	0.19%
13 vs 12 1st Qtr	1,567	1.03%
13 vs 12 2nd Qtr	1,233	0.79%
13 vs 12 3rd Qtr	300	0.19%
13 vs 12 4th Qtr		

# INDUSTRY EMPLOYMENT ESTIMATES 2013

## State of Alaska

Industry	Jan	Feb	Mar	Apr	May	Jun	Jul	Aug	Sep	Oct	Nov	Dec	2013 YTD Avg.	2012 YTD Avg.	2013 vs 2012 YTD Change	% Change
	revised	revised	revised	revised	revised	revised	preliminary									
Total Nonfarm	314,200	321,400	323,800	326,500	333,700	352,800	356,500						332,700	332,657	43	0.01%
Goods Producing	40,100	42,900	43,500	43,900	44,000	53,700	59,900						46,857	47,014	-157	-0.33%
Services Providing	274,100	278,500	280,300	282,600	289,700	299,100	296,600						285,843	285,643	200	0.07%
Mining and Logging <sup>2</sup>	16,600	17,100	17,300	17,500	17,800	18,400	18,600						17,614	16,614	1,000	6.02%
Mining	16,400	16,800	16,900	17,000	17,300	17,800	18,000						17,171	16,343	829	5.07%
Oil & Gas	13,600	13,900	14,000	14,100	14,300	14,500	14,700						14,157	13,343	814	6.10%
Construction	14,300	14,900	15,100	15,700	17,100	19,900	20,700						16,814	15,629	1,186	7.59%
Manufacturing	9,200	10,900	11,100	10,700	9,100	15,400	20,600						12,429	14,771	-2,343	-15.86%
Seafood Processing	5,600	7,300	7,400	6,700	5,000	11,200	16,400						8,514	11,143	-2,629	-23.59%
Trade/Transportation/Utilities	61,000	60,400	61,000	62,400	66,100	68,700	69,200						64,114	63,157	957	1.52%
Wholesale Trade	5,900	5,800	5,900	5,900	5,900	6,100	6,300						5,971	6,186	-214	-3.46%
Retail Trade	34,800	34,100	34,400	35,200	36,900	38,100	38,100						35,943	35,486	457	1.29%
Food & Beverage Stores	6,100	6,100	6,000	6,000	6,100	6,200	6,500						6,143	6,186	-43	-0.69%
General Merchandise Stores	9,800	9,500	9,700	9,800	10,100	10,400	10,100						9,914	9,800	114	1.17%
Trans/Warehouse/Utilities	20,300	20,500	20,700	21,300	23,300	24,500	24,800						22,200	21,486	714	3.32%
Air Transportation	5,500	5,400	5,500	5,600	5,900	6,800	6,400						5,871	5,814	57	0.98%
Information	6,000	6,100	6,100	6,000	6,100	6,200	6,200						6,100	6,243	-143	-2.29%
Telecommunications	3,900	3,900	3,900	3,900	4,000	4,100	4,100						3,971	4,171	-200	-4.79%
Financial Activities	12,900	13,000	13,100	13,100	13,400	13,900	14,300						13,386	13,343	43	0.32%
Professional & Business Svcs	27,000	27,900	27,200	27,900	28,700	29,500	29,700						28,271	28,400	-129	-0.45%
Educational & Health Services	47,000	47,400	47,700	47,700	47,700	47,600	47,100						47,414	46,114	1,300	2.82%
Health Care	33,400	33,500	33,800	33,500	33,800	34,200	34,100						33,757	32,714	1,043	3.19%
Leisure & Hospitality	27,800	28,400	29,400	29,500	33,300	38,600	40,400						32,486	32,971	-486	-1.47%
Accommodation	6,500	6,500	6,600	6,700	7,700	10,600	11,500						8,014	7,900	114	1.45%
Food Svcs & Drinking Places	17,600	18,100	18,700	18,800	20,900	22,400	23,000						19,929	20,243	-314	-1.55%
Other Services	11,200	11,200	11,400	11,400	11,600	11,700	12,100						11,514	11,557	-43	-0.37%
Government	81,200	84,100	84,400	84,600	83,100	82,900	77,600						82,557	83,857	-1,300	-1.55%
Federal Government	14,800	14,700	14,900	14,900	15,200	15,600	15,400						15,071	16,500	-1,429	-8.66%
State Government	24,500	26,700	26,800	26,900	25,700	25,200	25,100						25,843	25,800	43	0.17%
State Education	6,600	8,800	8,700	8,700	7,500	6,400	6,000						7,529	7,486	43	0.57%
Local Government	41,900	42,700	42,700	42,800	42,000	42,100	37,100						41,614	41,557	57	0.14%
Local Education	23,600	24,300	24,100	24,100	23,400	22,300	17,500						22,757	23,443	-686	-2.93%
Tribal Government <sup>1</sup>	3,400	3,400	3,500	3,400	3,400	3,700	3,700						3,500	3,671	-171	-4.67%

- Nonfarm Wage & Salary excludes self-employed workers, fishers, domestics, and unpaid family workers.

- All totals are non-seasonally adjusted totals.

- Government includes employees of public school systems and the University of Alaska.

- Beginning January 2001, wage and salary employment estimates were published under a new classification system. The Standard Industrial Classification system (SIC) has been replaced by the North American Industry Classification System (NAICS). Data prior to 2001 are comparable only at the Total Nonfarm and Government levels.

<sup>1/</sup> As of January 2001, certain federally-recognized tribal entities were moved to Local Government, which created a series break for Total Government and Local Government. [Please see the April 2002 Alaska Economic Trends publication for a detailed explanation.](#)

<sup>2/</sup> This category was called "Natural Resources and Mining" in previous years. The change is in name only; the industries it includes remain the same.

- Totals may not equal sub-sections due to rounding.

- Source: Alaska Department of Labor and Workforce Development, Research and Analysis Section

### Quick Comparisons

13 vs 12 July	-1,200	-0.34%
13 vs 12 1st Qtr	1,900	0.60%
13 vs 12 2nd Qtr	-1,400	-0.41%
13 vs 12 3rd Qtr	-1,200	-0.34%
13 vs 12 4th Qtr		

**Dianne Blumer**  
Commissioner  
P.O. Box 111149  
Juneau, AK 99811-1149  
www.labor.alaska.gov



**Beth Leschper**  
Communications Director  
907.465.2700  
cell: 907.723.1321  
beth.leschper@alaska.gov

## Press Release

COMMISSIONER'S OFFICE

August 16, 2013

No. 13-37

### Unemployment rate at 6.3 percent in July

Alaska's seasonally adjusted unemployment rate was 6.3 percent in July, up three-tenths of a percentage point from June's revised rate. The comparable national rate was 7.4 percent.

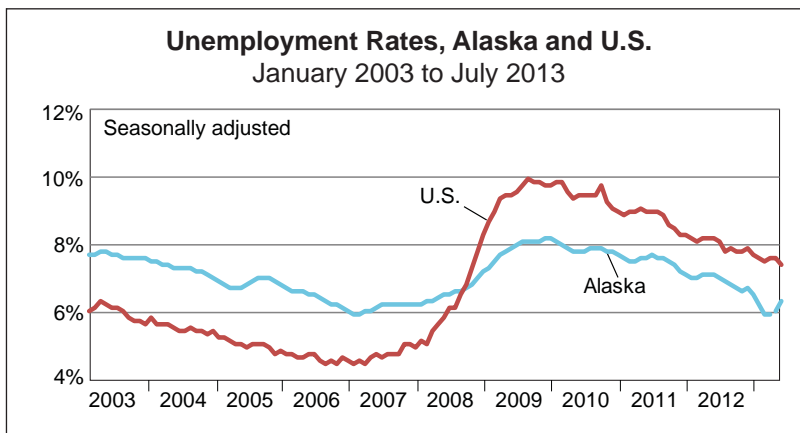
Alaska's not-seasonally adjusted rate was 5.9 percent in July, down six-tenths of a percentage point from June. Large declines in the unadjusted rate are typical from June to July. The unadjusted rate was also seven-tenths of a percentage point lower than it was one year ago.

Not-seasonally adjusted rates fell in 26 of 29 boroughs and census areas. Summer employment was firing on all cylinders in July, reflected in low unemployment across the state.

The lowest rates were in Bristol Bay Borough at 1.1 percent and the Municipality of Skagway at 2.3 percent. Bristol Bay and Skagway both have small year-round populations and depend heavily on a single summer industry. In Bristol Bay it's salmon fishing, and in Skagway it's tourism.

The largest over-the-month rate drops were in Aleutians East Borough and Aleutians West Census Area, where rates fell 4 and 2.3 percentage points, respectively. The summer pollock and salmon fisheries are in full swing in the Aleutians by July, which explains the drop in unemployment.

**Contact: Caroline Schultz, Economist (907) 465-6027**  
Research and Analysis Web site: <http://laborstats.alaska.gov>



Unemployment Rates, Seasonally Adjusted			
	7/13	6/13	7/12
Alaska	6.3%	6.0%	7.1%
U.S.	7.4%	7.6%	8.2%

Sources for graph and table: Alaska Department of Labor and Workforce Development, Research and Analysis Section; and U.S. Bureau of Labor Statistics

For detailed employment estimates, see <http://live.laborstats.alaska.gov/ces/>. The estimates are preliminary and subject to potentially large revisions.

## Labor Force by Borough and Census Area, Not Seasonally Adjusted<sup>1</sup>

	Civilian Labor Force			Unemployed					
	7/13 <sup>P</sup>	6/13	7/12	Number			Rate		
				7/13 <sup>P</sup>	6/13	7/12	7/13 <sup>P</sup>	6/13	7/12
<b>Alaska Statewide</b>	<b>373,700</b>	<b>371,481</b>	<b>375,515</b>	<b>22,220</b>	<b>24,207</b>	<b>24,851</b>	<b>5.9</b>	<b>6.5</b>	<b>6.6</b>
<b>Anchorage/Mat-Su Region</b>	<b>198,699</b>	<b>199,667</b>	<b>199,769</b>	<b>10,574</b>	<b>11,363</b>	<b>12,024</b>	<b>5.3</b>	<b>5.7</b>	<b>6.0</b>
Anchorage, Municipality of	155,685	156,405	156,401	7,692	8,271	8,707	4.9	5.3	5.6
Matanuska-Susitna Borough	43,014	43,262	43,368	2,882	3,092	3,317	6.7	7.1	7.6
<b>Gulf Coast Region</b>	<b>43,547</b>	<b>42,529</b>	<b>43,466</b>	<b>2,579</b>	<b>2,846</b>	<b>2,961</b>	<b>5.9</b>	<b>6.7</b>	<b>6.8</b>
Kenai Peninsula Borough	29,913	29,309	29,892	1,840	2,025	2,152	6.2	6.9	7.2
Kodiak Island Borough	7,248	7,128	7,248	362	413	419	5.0	5.8	5.8
Valdez-Cordova Census Area	6,386	6,092	6,326	377	408	390	5.9	6.7	6.2
<b>Interior Region</b>	<b>55,376</b>	<b>54,992</b>	<b>55,719</b>	<b>3,328</b>	<b>3,651</b>	<b>3,712</b>	<b>6.0</b>	<b>6.6</b>	<b>6.7</b>
Denali Borough	2,477	2,356	2,420	89	99	98	3.6	4.2	4.0
Fairbanks North Star Borough	46,371	45,941	46,777	2,439	2,711	2,830	5.3	5.9	6.0
Southeast Fairbanks Census Area	3,339	3,399	3,351	339	370	354	10.2	10.9	10.6
Yukon-Koyukuk Census Area	3,189	3,296	3,171	461	471	430	14.5	14.3	13.6
<b>Northern Region</b>	<b>12,665</b>	<b>12,809</b>	<b>12,589</b>	<b>1,220</b>	<b>1,310</b>	<b>1,292</b>	<b>9.6</b>	<b>10.2</b>	<b>10.3</b>
Nome Census Area	3,919	4,159	3,878	485	520	500	12.4	12.5	12.9
North Slope Borough	5,539	5,431	5,503	287	303	312	5.2	5.6	5.7
Northwest Arctic Borough	3,207	3,219	3,208	448	487	480	14.0	15.1	15.0
<b>Southeast Region</b>	<b>42,571</b>	<b>41,665</b>	<b>43,311</b>	<b>2,178</b>	<b>2,387</b>	<b>2,497</b>	<b>5.1</b>	<b>5.7</b>	<b>5.8</b>
Haines Borough	1,693	1,413	1,715	88	97	93	5.2	6.9	5.4
Hoonah-Angoon Census Area	1,571	1,584	1,616	147	165	164	9.4	10.4	10.1
Juneau, City and Borough of	18,244	18,703	18,534	770	840	884	4.2	4.5	4.8
Ketchikan Gateway Borough	9,238	8,824	9,391	442	485	508	4.8	5.5	5.4
Petersburg Census Area	1,748	1,674	1,817	101	114	155	5.8	6.8	8.5
Prince of Wales-Hyder Census Area	2,624	2,548	2,696	279	327	330	10.6	12.8	12.2
Sitka, City and Borough of	5,065	4,617	5,144	224	239	257	4.4	5.2	5.0
Skagway, Municipality of	918	911	934	21	16	18	2.3	1.8	1.9
Wrangell, City and Borough of	1,149	1,088	1,139	85	80	65	7.4	7.4	5.7
Yakutat, City and Borough of	321	303	325	21	24	23	6.5	7.9	7.1
<b>Southwest Region</b>	<b>20,843</b>	<b>19,815</b>	<b>20,664</b>	<b>2,340</b>	<b>2,646</b>	<b>2,365</b>	<b>11.2</b>	<b>13.4</b>	<b>11.4</b>
Aleutians East Borough	1,363	1,078	1,348	118	137	118	8.7	12.7	8.8
Aleutians West Census Area	3,125	3,072	3,090	224	292	218	7.2	9.5	7.1
Bethel Census Area	6,903	7,141	6,824	1,118	1,211	1,103	16.2	17.0	16.2
Bristol Bay Borough	2,763	1,941	2,738	30	35	39	1.1	1.8	1.4
Dillingham Census Area	2,642	2,504	2,625	194	216	205	7.3	8.6	7.8
Lake and Peninsula Borough	1,592	1,376	1,580	69	78	74	4.3	5.7	4.7
Wade Hampton Census Area	2,455	2,703	2,459	587	677	608	23.9	25.0	24.7

P = Preliminary. As more information becomes available, data are revised every month for the previous month and again at the end of every calendar year.

Note: The official definition of unemployment excludes anyone who has not made an active attempt to find work in the four-week period up to and including the week that includes the 12th of the reference month. Many in rural Alaska do not meet the definition because they have not conducted an active job search due to the scarcity of employment opportunities.

<sup>1</sup>Unemployment rates that are not seasonally adjusted should not be compared with those that are.

Source: Alaska Department of Labor and Workforce Development, Research and Analysis Section; and U.S. Bureau of Labor Statistics

