



AEDC
Anchorage Economic
Development Corporation

March 2013 Employment Report Anchorage

4.9%

March Unemployment Rate
for Anchorage

 anchorage™
big wild life

MONTHLY UNEMPLOYMENT

The unemployment rate for Anchorage in March was **4.9 PERCENT**, a 0.2 decrease from February. This is the lowest March unemployment rate in Anchorage since 1999 (4.8) and the second lowest March reading since 1990. March is typically the month where the unemployment rate begins to decrease through May, and over the last ten years, this decline has averaged over 0.4 percent. If 2013 follows this trend, Anchorage may see unemployment dip into the 4 to 4.5 percent range for a number of months this year.

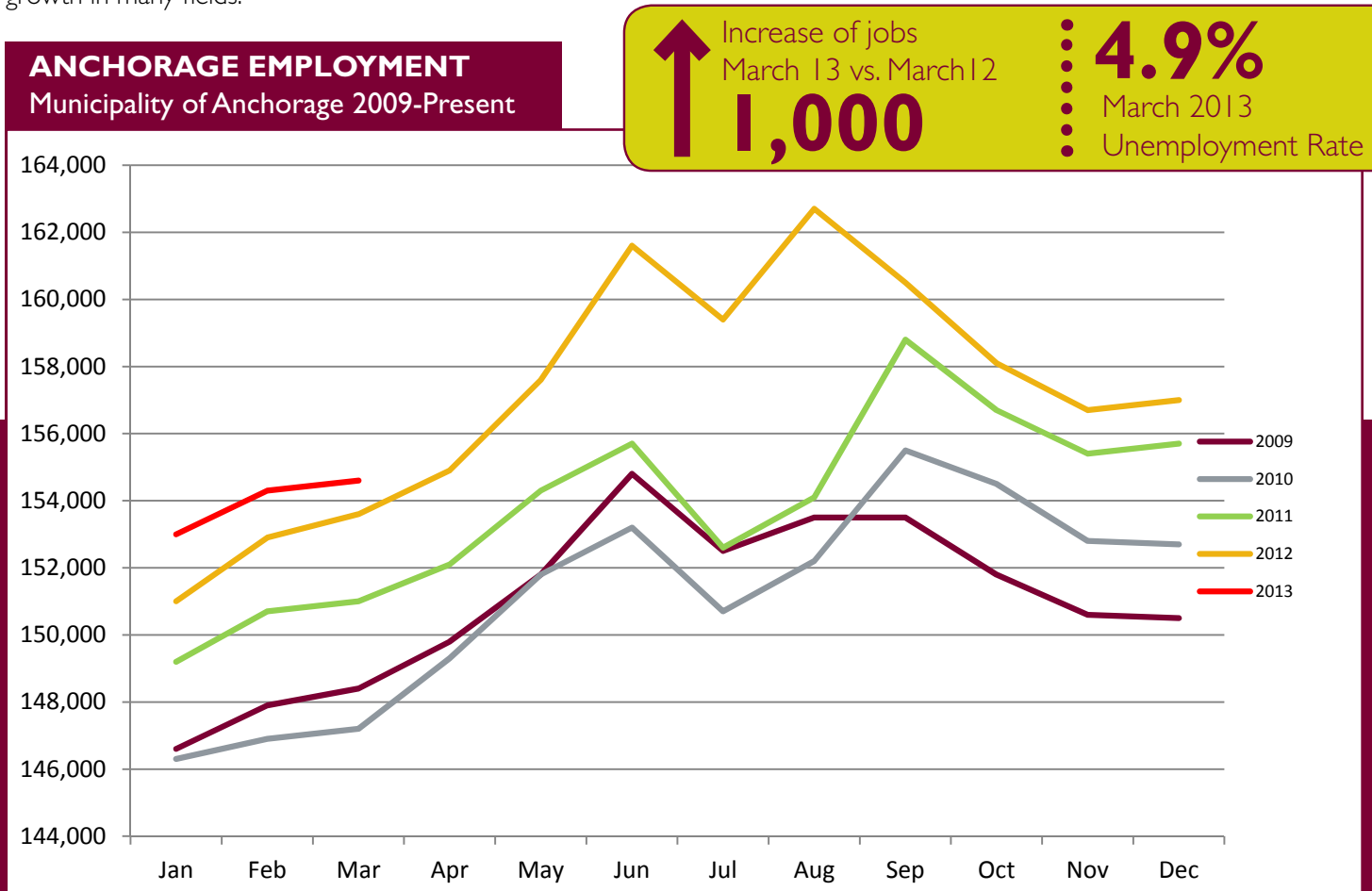
YEAR-TO-DATE UNEMPLOYMENT

The average year-to-date (YTD) **non-seasonally adjusted unemployment rate in Anchorage was 5.2 percent**, down from 5.4 percent in February and 0.8 percent lower than the 2012 YTD average. An increase of 462 to the employment total and a decrease of 768 from the Anchorage labor force during the YTD period has resulted in a reduction of 1,230 people in the reported unemployment total.

It is important to note that these unemployment numbers represent the labor force residing in Anchorage, and do not include jobs in Anchorage held by residents from outside the municipality. The industry employment estimates referenced in the remainder of this report are representative of all jobs in the Municipality of Anchorage, regardless of the job holder's place of residency.

ANCHORAGE INDUSTRY EMPLOYMENT ESTIMATES

As for the Anchorage Industry Employment estimates, the YTD average is growing strongly over 2012 with a **TOTAL INCREASE OF 1,467 JOBS SO FAR**. Industries showing the largest YTD growth rates include oil & gas, manufacturing and construction. Seven of the ten major sector's March 2013 averages are at or above March 2012, indicating sustained growth in many fields.

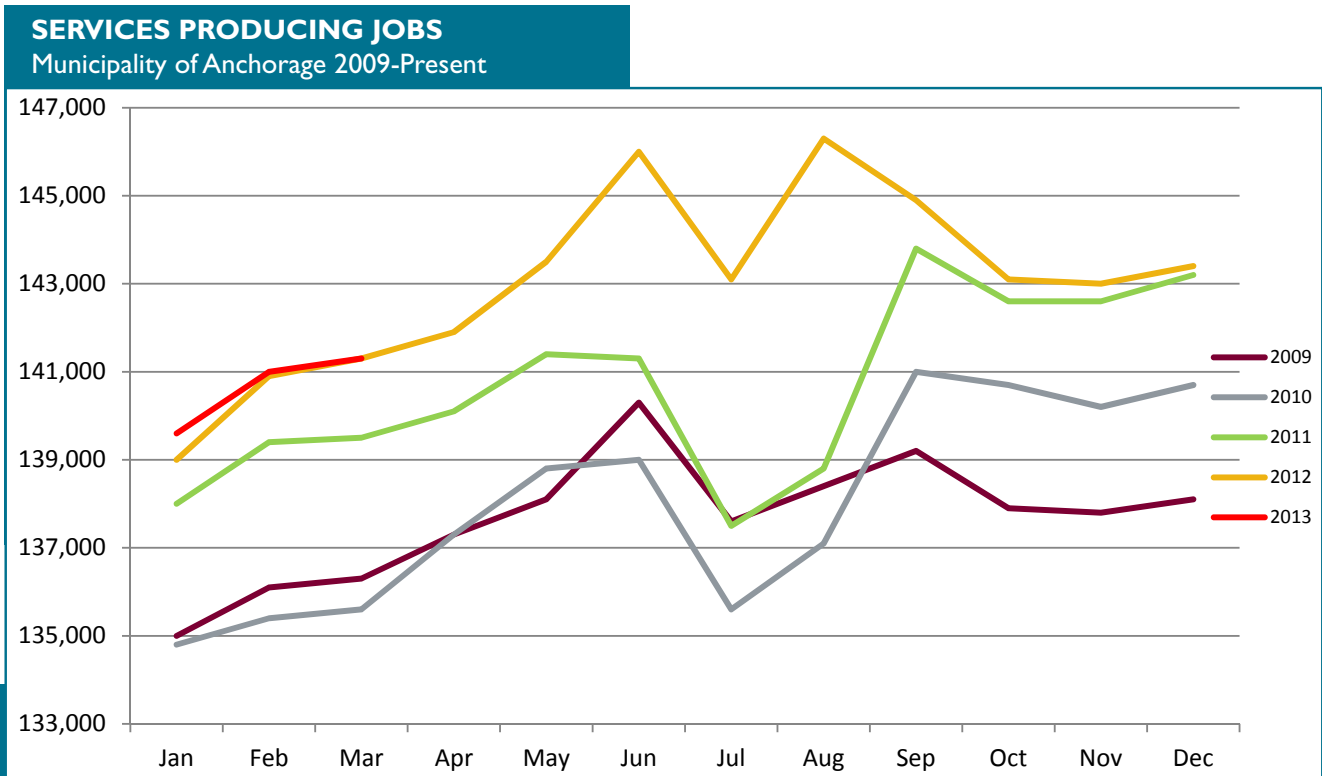


SERVICES PRODUCING JOBS

ENGINEERING, RETAIL, TOURISM, HEALTH CARE, ETC.

Services producing jobs in Anchorage totaled **141,300** for March. Overall, the YTD average is **up 233 jobs** from 2012 YTD.

The **educational and health services sector growth rate is 2.46 percent** so far this year, making it the highest growth sector in the service industry. **Federal and local government sectors are both averaging less than this point last year** (-467 for federal and -500 locally), but the **state government jobs average is up 100 YTD**. Tourism related job growth is expected to be strong this year as indicators in the visitor industry are generally positive.



Increase of Services Producing Jobs YTD

233

March total:

141,300

Services Producing Jobs in Anchorage

MARCH 12 vs. MARCH 13
YEAR TO DATE

Educational & Health Services
+600

Leisure & Hospitality
+267

Information & Financial
-133

Professional & Business Services
+500

Retail
flat

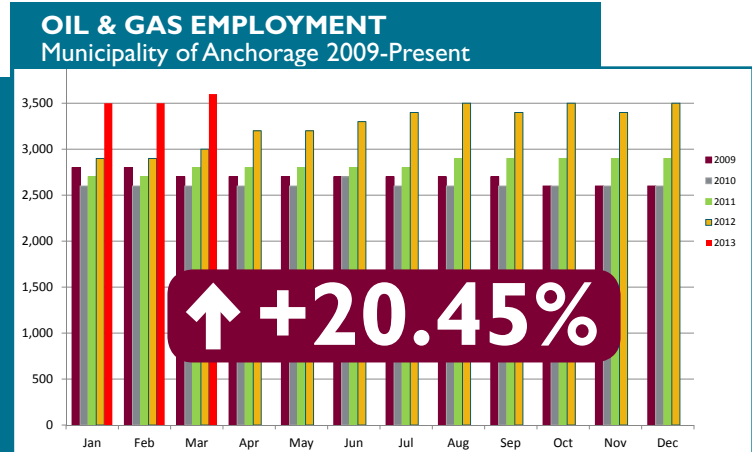
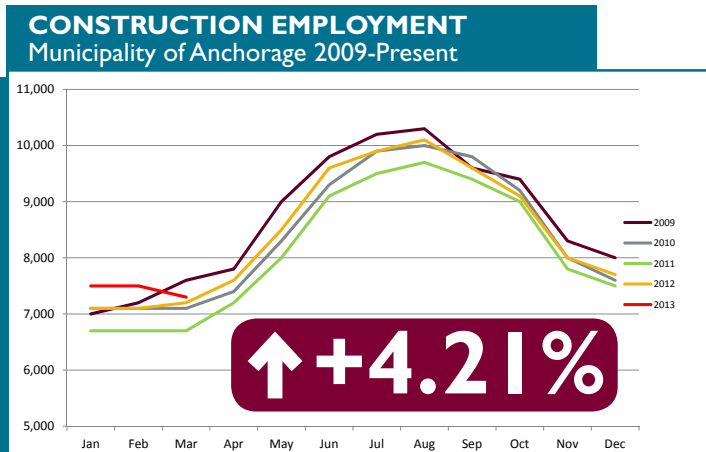
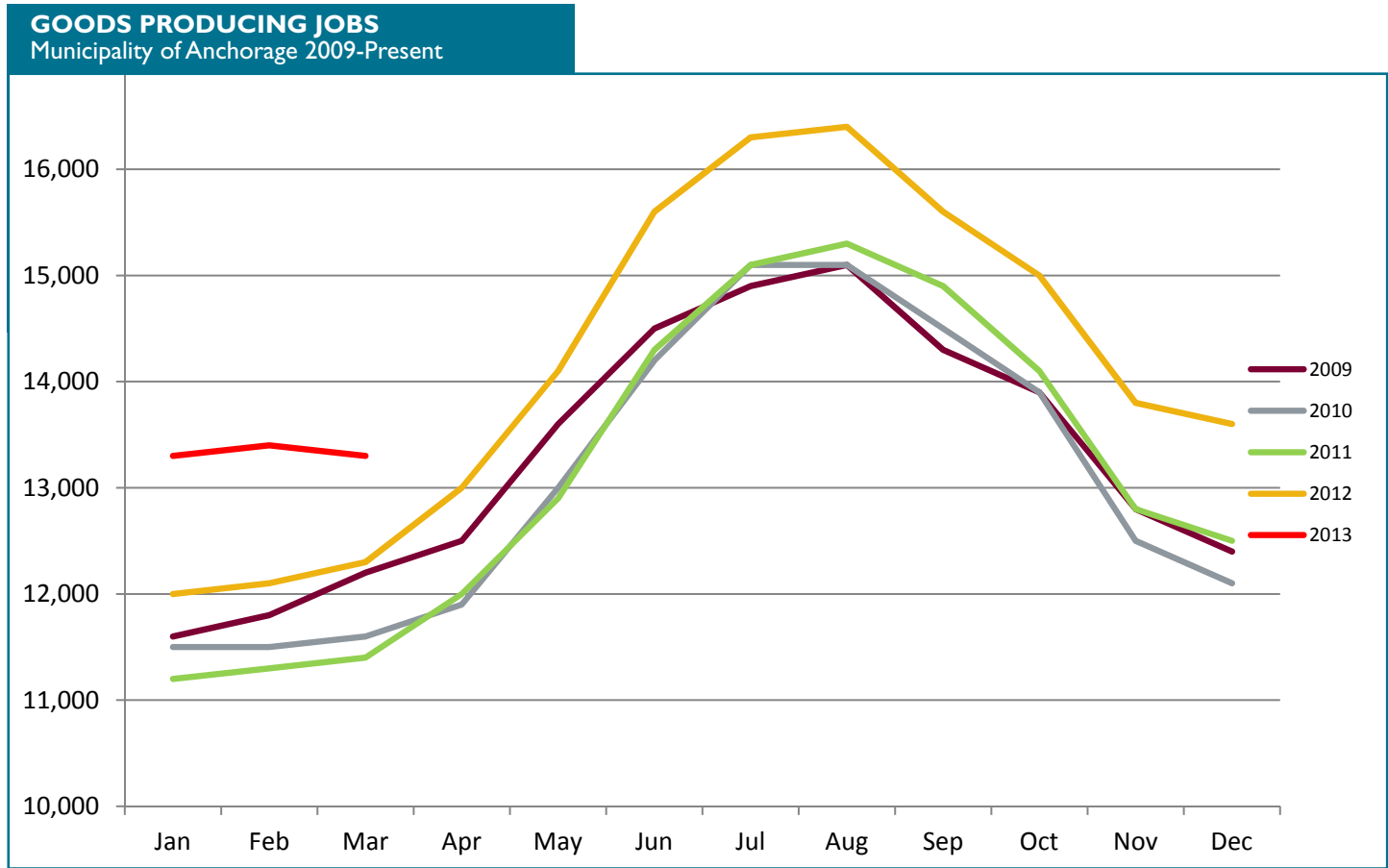
Local & Federal Government
-967

GOODS PRODUCING JOBS

CONSTRUCTION WORK, MINING, OIL & GAS PRODUCTION, MANUFACTURING

Goods producing jobs (those jobs that are specifically tied to production, not those which support the production or maintenance of the production jobs) are showing remarkable growth, **AVERAGING 1,200 MORE JOBS IN 2013 YTD** over the same period in 2012.

The oil & gas sector is leading the way, with 600 more jobs than last year at this point, equalling a growth rate more than 20 percent. With the passing of Senate Bill 21, which improved investment conditions for oil development companies, continued growth in this sector is likely. The construction industry is also seeing higher job numbers than usual in March, averaging 300 more jobs than 2012 YTD. New projects this year include stand-alone stores for the Natural Pantry and Bass Pro Shops. A number of large projects from 2012 will be continued this year. The Associated General Contractors of Alaska is estimating an 8 percent increase in construction spending this year, which bodes well for construction hiring.

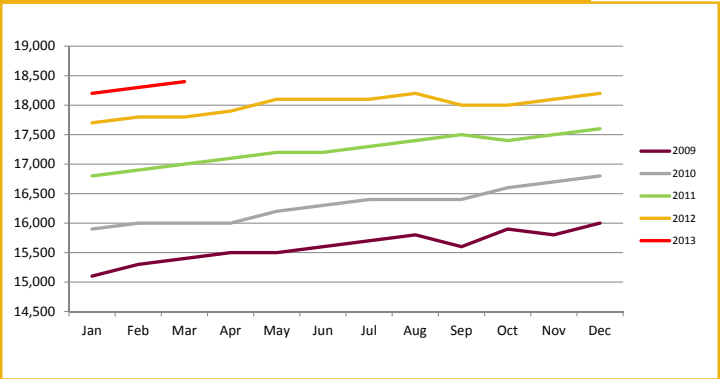


••••• SERVICES PRODUCING JOBS SUMMARY

HEALTH CARE EMPLOYMENT

The health care industry is still going strong, with **533 MORE JOBS OVER 2012 YTD**. The 3 percent YTD job growth in the local health care sector is still below the 2012 end of year rate. It has improved since February and is still one of the fastest growing service producing industries. If this trend continues through the year, the sector will prove AEDC's January projection of 400 additional health care jobs to be conservative. Health care has been identified by the state Department of Labor as the industry with the highest growth potential in Alaska for the next decade.

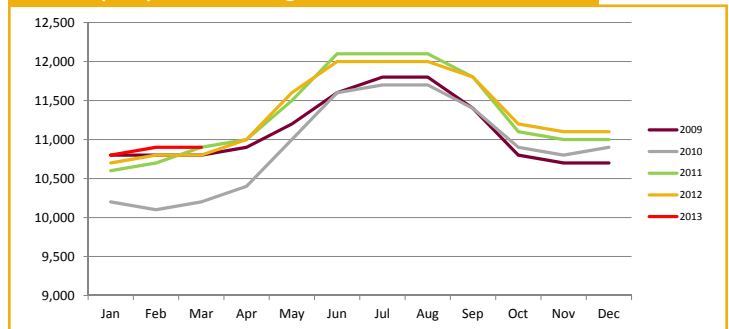
HEALTH CARE EMPLOYMENT
Municipality of Anchorage 2009-Present



TRANSPORTATION

March's estimate of 10,900 jobs is slightly higher than 2012, and the YTD average is up 100 jobs. AEDC estimates that this industry will retain these 100 jobs through the end of the year. Upcoming air cargo transit data for the first quarter of 2013 will help to show how the industry is faring so far this year.

TRANSPORTATION EMPLOYMENT
Municipality of Anchorage 2009-Present

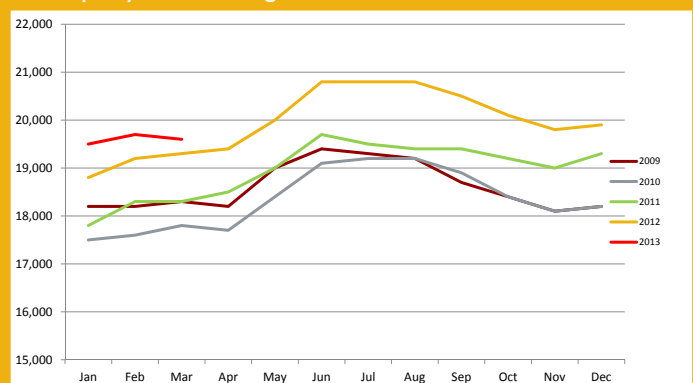


PROFESSIONAL & BUSINESS SERVICES

ENGINEERING, ARCHITECTURE, LEGAL SERVICES, ACCOUNTING, SCIENTIFIC RESEARCH, WASTE MANAGEMENT & ADMINISTRATIVE SERVICES

The YTD average is **up 500 jobs from 2012** and the rate of increase is the largest of all service providing industries at 2.62 percent. Job growth within this industry is often tied to growth in other industries such as oil & gas, construction and transportation. Current conditions look favorable for continued growth.

PROFESSIONAL & BUSINESS SERVICES EMPLOYMENT
Municipality of Anchorage 2009-Present



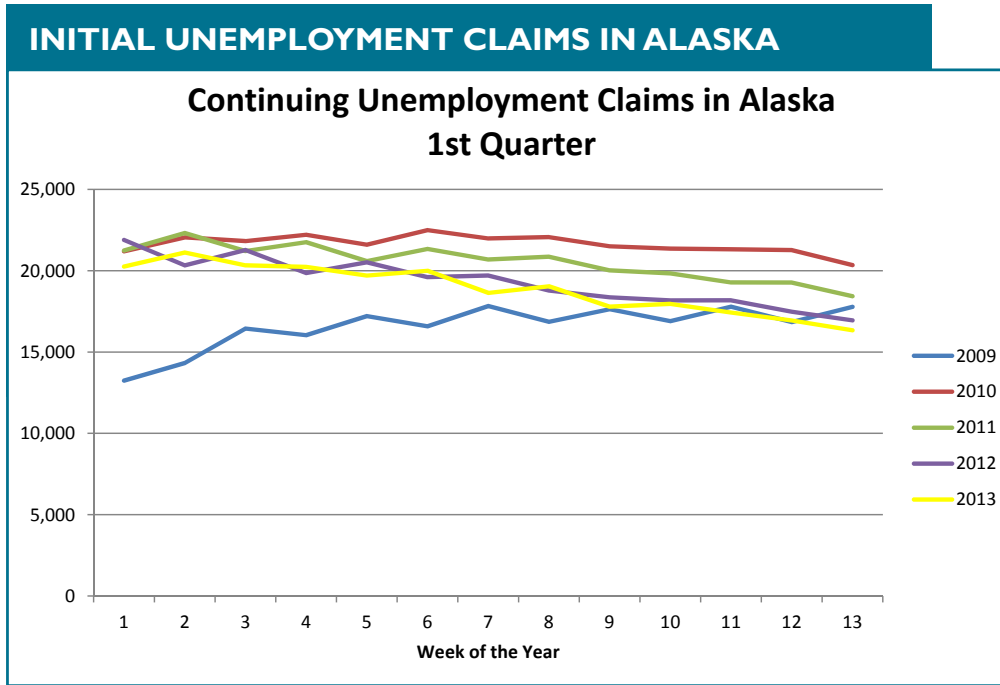
↑ Increase of Professional & Business Services jobs
500
March 13 vs. March 12

↑ **2.62%**

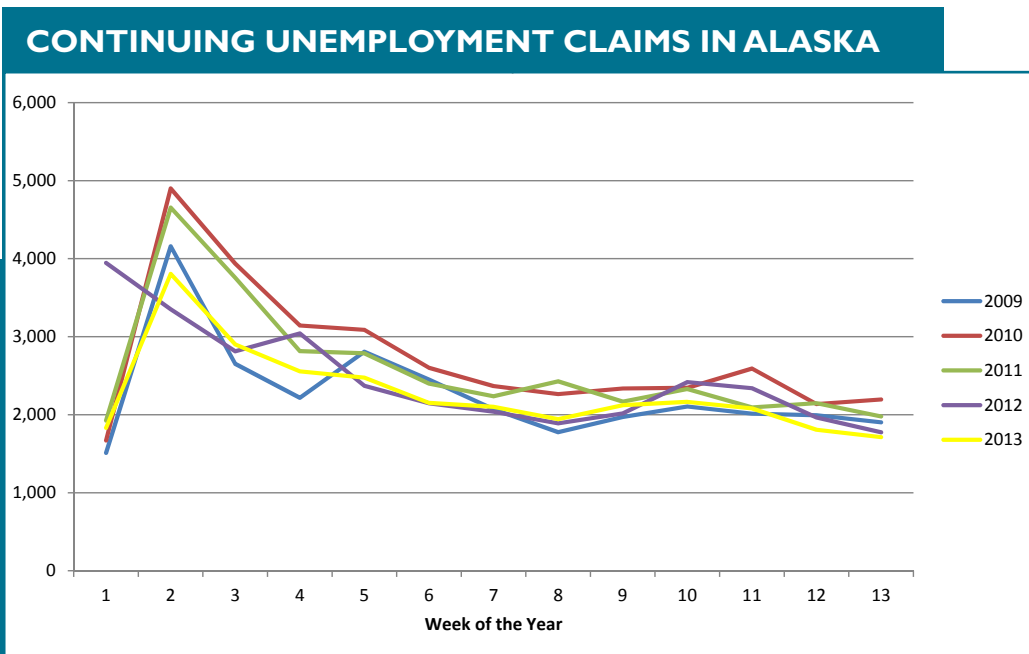
↑ **19,600**
March 2013 Professional & Business Services Jobs

UNEMPLOYMENT CLAIMS

Initial unemployment claim applications can be interpreted as a proxy for layoffs. They tend to fall as job growth accelerates.



Continuing claims figures helps to show how well unemployed workers are re-entering the workforce. This total does not include workers receiving extended benefits from the federal government. As of the final week of the first quarter, both continuing and initial claims are **lower than this time in the previous four years**, and the overall trend is for the same. These figures tend to decline as the summer approaches and there is a good chance that continuing claims will fall below 10,000 in the third quarter for the first time in five years.



All data referenced in this employment report is from the State of Alaska, Dept. of Labor & Workforce Development website: www.laborstats.alaska.gov

UNEMPLOYMENT ANALYSIS (YTD, 2013)

Anchorage, Mat-Su, Kenai Peninsula Borough

	Jan	Feb	Mar	Apr	May	Jun	Jul	Aug	Sep	Oct	Nov	Dec	13 YTD Avg	12 YTD Avg	13 vs 12
Municipality of Anchorage															
Labor Force	revised 157,275	revised 156,926	preliminary 155,678										156,626	157,394	(768)
Employment	148,567	148,914	148,014										148,498	148,036	462
Unemployment	8,708	8,012	7664										8,128	9,358	(1,230)
Unemployment Rate	5.5%	5.1%	4.9%										5.2%	5.9%	-0.8%
Mat-Su Borough															
Labor Force	44,213	44,004	43,541										43,919	44,471	(552)
Employment	40,288	40,382	40,137										40,269	40,143	126
Unemployment	3,925	3,622	3404										3,650	4,328	(677)
Unemployment Rate	8.9%	8.2%	7.8%										8.3%	9.7%	-1.4%
Kenai Peninsula Borough															
Labor Force	26,413	26,491	26,717										26,540	26,537	3
Employment	23,879	24,123	24,501										24,168	23,774	393
Unemployment	2,534	2,368	2216										2,373	2,763	(390)
Unemployment Rate	9.6%	8.9%	8.3%										8.9%	10.4%	-1.5%
Southcentral Region															
Labor Force	227,901	227,421	225,936										227,086	228,402	(1,316)
Employment	212,734	213,419	212,652										212,935	211,954	981
Unemployment	15,167	14,002	13,284										14,151	16,448	(2,297)
Unemployment Rate	6.7%	6.2%	5.9%										6.2%	7.2%	-1.0%
State of Alaska															
Labor Force	361,085	362,187	360,419										361,230	363,091	(1,861)
Employment	333,414	336,610	336,503										335,509	333,959	1,550
Unemployment	27,671	25,577	23,916										25,721	29,133	(3,411)
Unemployment Rate	7.7%	7.1%	6.6%										7.1%	8.0%	-0.9%

***Note:** These numbers reflect employment, unemployment, etc. for only those people that are residence of the specified City/Region, thus are not inclusive of people who commute to another city for their jobs. (Ex: Someone lives in Wasilla but works in Anchorage. They would be counted in the Mat-Su Borough's labor force and employment numbers, not the Municipality of Anchorage numbers)

INDUSTRY EMPLOYMENT ESTIMATES 2013

Municipality of Anchorage

Industry	Jan	Feb	Mar	Apr	May	Jun	Jul	Aug	Sep	Oct	Nov	Dec	2013 YTD Avg.	2012 YTD Avg.	2013 vs 2012 YTD Change	% Change
	revised	revised	preliminary													
Total Nonfarm	153,000	154,300	154,600										153,967	152,500	1,467	0.96%
Goods Producing	13,300	13,400	13,300										13,333	12,133	1,200	9.89%
Services Providing	139,600	141,000	141,300										140,633	140,400	233	0.17%
Mining and Logging ²	3,600	3,700	3,700										3,667	3,067	600	19.57%
Oil & Gas	3,500	3,500	3,600										3,533	2,933	600	20.45%
Construction	7,500	7,500	7,300										7,433	7,133	300	4.21%
Manufacturing	2,200	2,200	2,200										2,200	1,933	267	13.79%
Trade/Transportation/Utilities	32,000	31,900	31,800										31,900	31,867	33	0.10%
Wholesale Trade	4,300	4,300	4,300										4,300	4,400	-100	-2.27%
Retail Trade	16,900	16,700	16,500										16,700	16,700	0	0.00%
Trans/Warehouse/Utilities	10,800	10,900	10,900										10,867	10,767	100	0.93%
Air Transportation	2,900	2,900	2,900										2,900	2,867	33	1.16%
Information	3,800	3,800	3,800										3,800	3,900	-100	-2.56%
Financial Activities	7,900	8,000	8,000										7,967	8,000	-33	-0.42%
Professional & Business Svcs	19,500	19,700	19,600										19,600	19,100	500	2.62%
Educational & Health Services	24,900	25,100	25,100										25,033	24,433	600	2.46%
Health Care	18,200	18,300	18,400										18,300	17,767	533	3.00%
Leisure & Hospitality	16,100	16,400	16,700										16,400	16,133	267	1.65%
Accommodation	3,100	3,200	3,200										3,167	3,100	67	2.15%
Food Svcs & Drinking Places	10,800	11,000	11,100										10,967	10,833	133	1.23%
Other Services	5,600	5,600	5,700										5,633	5,667	-33	-0.59%
Government	29,800	30,600	30,700										30,367	31,167	-800	-2.57%
Federal Government	8,900	8,800	8,800										8,833	9,300	-467	-5.02%
State Government	10,200	11,000	11,000										10,733	10,633	100	0.94%
State Education	2,100	3,000	2,900										2,667	2,633	33	1.27%
Local Government	10,800	10,800	10,800										10,800	11,300	-500	-4.42%
Local Education	8,000	8,000	8,000										8,000	8,433	-433	-5.14%

- Nonfarm Wage & Salary excludes self-employed workers, fishers, domestics, and unpaid family workers.

- All totals are seasonally non-adjusted totals.

- Government includes employees of public school systems and the University of Alaska.

- Beginning January 2001, wage and salary employment estimates were published under a new classification system. The Standard Industrial Classification system (SIC) has been replaced by the North American Industry Classification System (NAICS). Data prior to 2001 are comparable only at the Total Nonfarm and Government levels.

^{1/} As of January 2001, certain federally-recognized tribal entities were moved to Local Government, which created a series break for Total Government and Local Government. Please see the April 2002 Alaska Economic Trends publication for a detailed explanation.

^{2/} This category was called "Natural Resources and Mining" in previous years. The change is in name only; the industries it includes remain the same.

- Some totals may not equal components due to rounding.

- Source: Alaska Department of Labor and Workforce Development, Research and Analysis Section

*** Note:** The above numbers are representative of all people employed in the Municipality of Anchorage, this is inclusive of workers who claim residence outside of the Municipality of Anchorage. (Ex: someone who lives in the Mat-Su, but works in Anchorage would be included in these number)

Quick Comparisons

13 vs 12 Mar.	1,000	0.65%
13 vs 12 1st Qtr	1,467	0.96%
13 vs 12 2nd Qtr		
13 vs 12 3rd Qtr		
13 vs 12 4th Qtr.		

INDUSTRY EMPLOYMENT ESTIMATES 2013

State of Alaska

Industry	Jan revised	Feb revised	Mar preliminary	Apr	May	Jun	Jul	Aug	Sep	Oct	Nov	Dec	2013 YTD Avg.	2012 YTD Avg.	2013 vs 2012 YTD Change	% Change
Total Nonfarm	314,200	323,400	323,900										319,833	317,900	1,933	0.61%
Goods Producing	40,100	42,900	43,500										42,167	41,667	500	1.20%
Services Providing	274,100	278,500	280,400										277,667	276,233	1,433	0.52%
Mining and Logging ²	16,600	17,100	17,300										17,000	15,767	1,233	7.82%
Mining	16,400	16,800	16,900										16,700	15,600	1,100	7.05%
Oil & Gas	13,600	13,900	14,000										13,833	12,900	933	7.24%
Construction	14,300	14,900	15,100										14,767	13,300	1,467	11.03%
Manufacturing	9,200	10,900	11,100										10,400	12,600	-2,200	-17.46%
Seafood Processing	7,200	9,100	9,500										8,600	9,267	-667	-7.19%
Trade/Transportation/Utilities	61,000	60,400	60,900										60,767	59,733	1,033	1.73%
Wholesale Trade	5,900	5,800	5,900										5,867	6,000	-133	-2.22%
Retail Trade	34,800	34,100	34,300										34,400	34,167	233	0.68%
Food & Beverage Stores	6,100	6,100	6,000										6,067	5,933	133	2.25%
General Merchandise Stores	9,800	9,500	9,600										9,633	9,700	-67	-0.69%
Trans/Warehouse/Utilities	20,300	20,500	20,700										20,500	19,567	933	4.77%
Air Transportation	5,500	5,400	5,500										5,467	5,467	0	0.00%
Information	6,000	6,100	6,100										6,067	6,200	-133	-2.15%
Telecommunications	3,900	3,900	3,900										3,900	4,167	-267	-6.40%
Financial Activities	12,900	13,000	13,100										13,000	13,067	-67	-0.51%
Professional & Business Svcs	27,000	27,900	27,600										27,500	27,267	233	0.86%
Educational & Health Services	47,000	47,400	47,700										47,367	45,800	1,567	3.42%
Health Care	33,400	33,500	33,800										33,567	32,400	1,167	3.60%
Leisure & Hospitality	27,800	28,400	29,200										28,467	28,467	0	0.00%
Accommodation	6,500	6,500	6,600										6,533	6,167	367	5.95%
Food Svcs & Drinking Places	17,600	18,100	18,600										18,100	18,367	-267	-1.45%
Other Services	11,200	11,200	11,400										11,267	11,333	-67	-0.59%
Government	81,200	84,100	84,400										83,233	84,367	-1,133	-1.34%
Federal Government	14,800	14,700	15,000										14,833	16,167	-1,333	-8.25%
State Government	24,500	26,700	26,800										26,000	25,800	200	0.78%
State Education	6,600	8,800	8,700										8,033	8,000	33	0.42%
Local Government	41,900	42,700	42,600										42,400	42,400	0	0.00%
Local Education	23,600	24,300	24,400										24,100	24,700	-600	-2.43%
Tribal Government ¹	3,400	3,400	3,500										3,433	3,433	0	0.00%

- Nonfarm Wage & Salary excludes self-employed workers, fishers, domestics, and unpaid family workers.

- All totals are non-seasonally adjusted totals.

- Government includes employees of public school systems and the University of Alaska.

- Beginning January 2001, wage and salary employment estimates were published under a new classification system. The Standard Industrial Classification system (SIC) has been replaced by the North American Industry Classification System (NAICS). Data prior to 2001 are comparable only at the Total Nonfarm and Government levels.

^{1/} As of January 2001, certain federally-recognized tribal entities were moved to Local Government, which created a series break for Total Government and Local Government. Please see the April 2002 Alaska Economic Trends publication for a detailed explanation.

^{2/} This category was called "Natural Resources and Mining" in previous years. The change is in name only, the industries it includes remain the same.

- Totals may not equal sub-sections due to rounding.

- Source: Alaska Department of Labor and Workforce Development, Research and Analysis Section

Quick Comparisons	
13 vs 12 Mar.	1,700 0.53%
13 vs 12 1st Qtr	1,933 0.61%
13 vs 12 2nd Qtr	
13 vs 12 3rd Qtr	
13 vs 12 4th Qtr	

Dianne Blumer
Commissioner
P.O. Box 111149
Juneau, AK 99811-1149
www.labor.alaska.gov



Beth Leschper
Communications Director
907.465.2700
cell: 907.723.1321
beth.leschper@alaska.gov

Press Release

COMMISSIONER'S OFFICE

April 19, 2013

No. 13-21

Unemployment rate at 6.2 percent in March

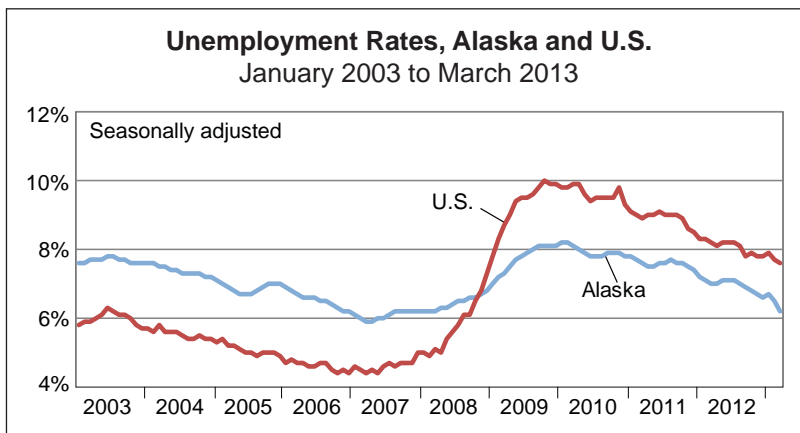
Alaska's seasonally adjusted unemployment rate was 6.2 percent in March, down three-tenths of a percentage point from February. The comparable U.S. rate for March was 7.6 percent.

Since peaking at 8.2 percent in early 2010, Alaska's rate has been on a generally downward trend over the last three years.

Alaska's not seasonally adjusted rate was 6.6 percent in March, down from 7.1 percent in February. In a typical year, the state's unadjusted rate will continue to fall until reaching its annual low point in July or August when jobs are most plentiful.

Unadjusted rates fell in all Alaska areas. The highest was 22.5 percent in the Hoonah-Angoon Census Area, and the lowest was 4.6 percent in the Kodiak Island and North Slope boroughs.

Contact: Dan Robinson, Economist (907) 465-6040
Research and Analysis Web site: <http://laborstats.alaska.gov>



Unemployment Rates, Seasonally Adjusted			
	3/13	2/13	3/12
Alaska	6.2%	6.5%	7.0%
U.S.	7.6%	7.7%	8.2%

Sources for graph and table: Alaska Department of Labor and Workforce Development, Research and Analysis Section; and U.S. Bureau of Labor Statistics

For detailed employment estimates, see <http://live.laborstats.alaska.gov/ces/>. The estimates are preliminary and subject to potentially large revisions.

Labor Force by Borough and Census Area, Not Seasonally Adjusted¹

	Civilian Labor Force			Unemployed					
	3/13 ^P	2/13	3/12	Number			Rate		
				3/13 ^P	2/13	3/12	3/13 ^P	2/13	3/12
Alaska Statewide	360,419	362,187	363,557	23,916	25,577	28,497	6.6	7.1	7.8
Anchorage/Mat-Su Region	199,219	200,930	201,334	11,068	11,634	13,494	5.6	5.8	6.7
Municipality of Anchorage	155,678	156,926	157,003	7,664	8,012	9,234	4.9	5.1	5.9
Matanuska-Susitna Borough	43,541	44,004	44,330	3,404	3,622	4,259	7.8	8.2	9.6
Gulf Coast Region	38,490	38,263	38,200	3,021	3,245	3,595	7.8	8.5	9.4
Kenai Peninsula Borough	26,717	26,491	26,593	2,216	2,368	2,666	8.3	8.9	10.0
Kodiak Island Borough	6,993	7,205	6,889	325	361	406	4.6	5.0	5.9
Valdez-Cordova Census Area	4,780	4,567	4,718	480	516	523	10.0	11.3	11.1
Interior Region	53,197	53,405	53,777	3,666	3,986	4,481	6.9	7.5	8.3
Denali Borough	764	748	789	156	170	178	20.4	22.7	22.6
Fairbanks North Star Borough	45,977	46,173	46,445	2,660	2,895	3,344	5.8	6.3	7.2
Southeast Fairbanks Census Area	3,322	3,368	3,338	385	414	423	11.6	12.3	12.7
Yukon-Koyukuk Census Area	3,134	3,116	3,205	465	507	536	14.8	16.3	16.7
Northern Region	13,192	13,183	12,929	1,180	1,261	1,339	8.9	9.6	10.4
Nome Census Area	4,374	4,319	4,269	466	500	506	10.7	11.6	11.9
North Slope Borough	5,729	5,689	5,589	265	271	313	4.6	4.8	5.6
Northwest Arctic Borough	3,089	3,175	3,071	449	490	520	14.5	15.4	16.9
Southeast Region	37,360	37,365	37,971	2,642	2,959	3,141	7.1	7.9	8.3
Haines Borough	1,130	1,098	1,143	114	129	133	10.1	11.7	11.6
Hoonah-Angoon Census Area	822	820	850	185	208	209	22.5	25.4	24.6
Juneau, City and Borough of	18,103	18,297	18,286	845	916	985	4.7	5.0	5.4
Ketchikan Gateway Borough	7,305	7,398	7,414	543	592	632	7.4	8.0	8.5
Petersburg Census Area	1,534	1,526	1,551	184	206	192	12.0	13.5	12.4
Prince of Wales-Hyder Census Area	2,221	2,251	2,370	300	372	436	13.5	16.5	18.4
Sitka, City and Borough of	4,530	4,267	4,586	242	276	279	5.3	6.5	6.1
Skagway, Municipality of	501	503	526	99	117	122	19.8	23.3	23.2
Wrangell, City and Borough of	973	964	999	101	111	121	10.4	11.5	12.1
Yakutat, City and Borough of	241	241	246	29	32	32	12.0	13.3	13.0
Southwest Region	18,964	19,038	19,347	2,340	2,491	2,446	12.3	13.1	12.6
Aleutians East Borough	1,316	1,310	1,343	110	118	114	8.4	9.0	8.5
Aleutians West Census Area	4,279	4,344	4,353	206	228	210	4.8	5.2	4.8
Bethel Census Area	7,046	7,068	7,170	1,084	1,147	1,121	15.4	16.2	15.6
Bristol Bay Borough	455	447	474	40	40	52	8.8	8.9	11.0
Dillingham Census Area	2,171	2,153	2,227	201	217	217	9.3	10.1	9.7
Lake and Peninsula Borough	949	923	982	92	98	108	9.7	10.6	11.0
Wade Hampton Census Area	2,748	2,793	2,798	607	643	624	22.1	23.0	22.3

P = Preliminary. As more information becomes available, data are revised every month for the previous month and again at the end of every calendar year.

Note: The official definition of unemployment excludes anyone who has not made an active attempt to find work in the four-week period up to and including the week that includes the 12th of the reference month. Many in rural Alaska do not meet the definition because they have not conducted an active job search due to the scarcity of employment opportunities.

¹Unemployment rates that are not seasonally adjusted should not be compared with those that are.

Source: Alaska Department of Labor and Workforce Development, Research and Analysis Section; and U.S. Bureau of Labor Statistics

