



AEDDC
Anchorage Economic
Development Corporation

May 2013 Employment Report Anchorage

4.7%

May Unemployment Rate
for Anchorage


anchorage
big wild life

MONTHLY UNEMPLOYMENT

The unemployment rate in Anchorage during May was **4.7 PERCENT**, down .1 percent from April. *The April unemployment rate was revised from 4.9 to 4.8 percent.* This is the **LOWEST MAY RATE SINCE 2007**, and second lowest since 2002. May's rate is typically lower than April's and will most likely spike in June as education workers begin to show up as unemployed due to the school district's summer break.

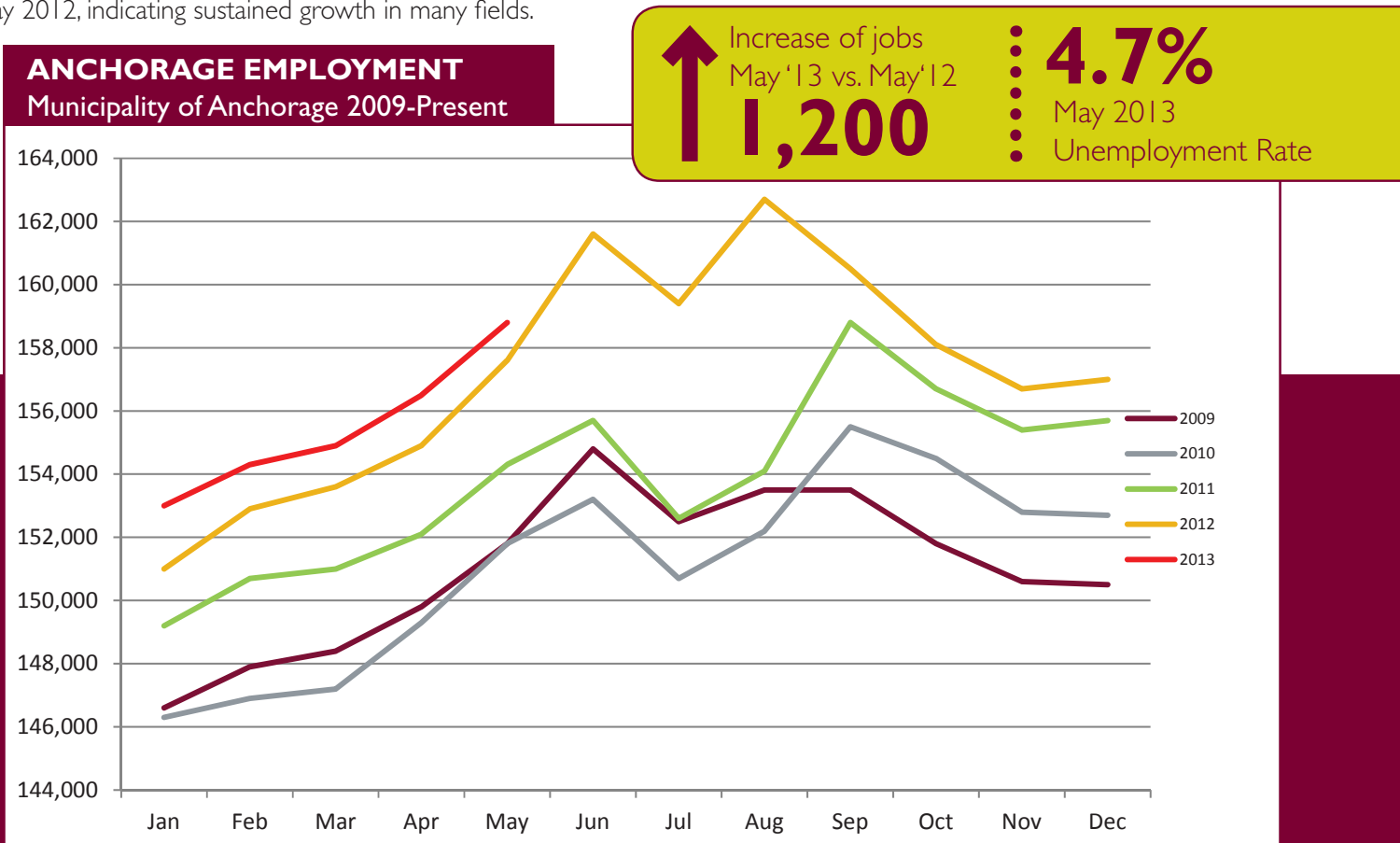
YEAR-TO-DATE UNEMPLOYMENT

The average year-to-date (YTD) **non-seasonally adjusted unemployment rate in Anchorage was 5 percent**, down from 5.1 percent in April and 0.8 percent lower than the 2012 YTD average. *An increase of 309 to the employment total and a decrease of 1,003 from the Anchorage labor force during the YTD period has resulted in a reduction of 1,336 people in the reported unemployment total.* The total number of unemployed people in Anchorage actively looking for jobs is estimated at 7,351 - the lowest since November of 2007. In the Mat-Su and Kenai Peninsula Boroughs, the monthly unemployment rate has decreased 27 and 30 percent from the January estimate (see the charts at the end of this report for more details).

It is important to note that these unemployment numbers represent the labor force residing in Anchorage, and do not include jobs in Anchorage held by residents from outside the municipality. The industry employment estimates referenced in the remainder of this report are representative of all jobs in the Municipality of Anchorage, regardless of the job holder's place of residency.

ANCHORAGE INDUSTRY EMPLOYMENT ESTIMATES

As for the Anchorage Industry Employment estimates, the YTD average is growing strongly over 2012 with a **TOTAL INCREASE OF 1,500 JOBS SO FAR**. Industries showing the largest YTD growth rates are all in the goods producing category, which includes oil & gas, manufacturing and construction. Of service providing industries, educational & health services is leading with a 3.18 percent YTD growth rate. Six of the ten major sector's May 2013 averages are at or above May 2012, indicating sustained growth in many fields.



EXECUTIVE SUMMARY CONT.

MONTHLY REVISIONS

Each month, the Alaska Department of Labor's Research and Analysis Division revises the previous month's employment numbers based on the availability of newer or late arriving data. The following tables show the changes in Anchorage's and Alaska's April job totals by industry. Most adjustments are relatively minor, however, some changes do occur which are significant. Changes such as these are normally the result of job classification modifications, sample size or modeling issues, or errors within the industry and do not generally reflect changes in the overall totals.

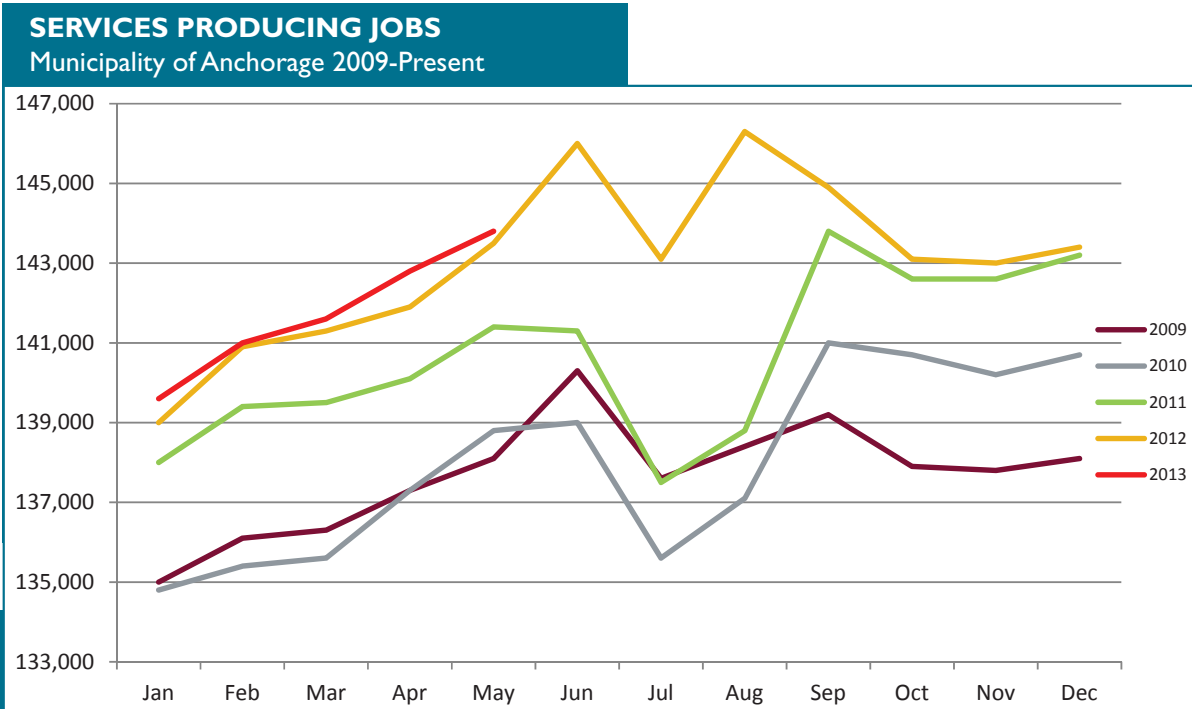
| APRIL 2013 REVISIONS, ANCHORAGE | | | |
|--|-------------------|---------------|------------|
| Industry | Preliminary Total | Revised Total | Net Change |
| Goods Producing | 13,800 | 13,700 | -100 |
| Trade, Transportation, Utilities | 32,200 | 32,300 | +100 |
| Wholesale Trade | 4,300 | 4,400 | +100 |
| Educational & Health Services | 25,600 | 25,500 | -100 |
| Local Government | 11,000 | 11,000 | +100 |
| Local Education | 7,900 | 8,100 | +200 |
| | | | |
| APRIL 2013 REVISIONS, ALASKA | | | |
| Industry | Preliminary Total | Revised Total | Net Change |
| Total Nonfarm | 326,400 | 326,500 | +100 |
| Goods Producing | 43,700 | 43,900 | +200 |
| Mining | 17,100 | 17,000 | -100 |
| Construction | 15,600 | 15,700 | +100 |
| Manufacturing | 10,600 | 10,700 | +100 |
| Services Providing | 282,700 | 282,600 | -100 |
| Trade, Transportation, Utilities | 62,200 | 62,400 | +200 |
| Financial Activities | 13,000 | 13,100 | +100 |

SERVICES PRODUCING JOBS

ENGINEERING, RETAIL, TOURISM, HEALTH CARE, ETC.

Services producing jobs in Anchorage totaled **143,800** for May. Overall, the YTD average is **up 440 jobs** from 2012 YTD.

The **educational and health services sector growth rate is 3.18 percent** so far this year, making it the highest growth sector in the service industry. Jobs in the **leisure and hospitality sector are growing at twice the rate of the overall totals** at 2.08 percent. With the cruise industry adding more than 40,000 passenger berths to the Alaska fleet, local hospitality employers have increased hiring in anticipation of a busy season. Federal and local government sectors are both averaging less than this point last year (-440 and -460), but the state government jobs average is up 60 YTD from 2012. National retail spending increased 3.2 percent over last May, up slightly from the 3 percent gain in April. This positive trend has not resulted in an increase in retail jobs in Anchorage yet, but with new retailers entering the local market later this year, the sector is expected to post job gains by the end of the year.



Increase of Services Producing Jobs YTD
440

May total:
143,800
 Services Producing Jobs in Anchorage

MAY 12 vs. MAY 13
YEAR TO DATE

| | | | |
|---|-------------|----------------------------------|-------------|
| Educational & Health Services | +780 | Leisure & Hospitality | +340 |
| Professional & Business Services | +440 | Retail | +20 |
| Information | -100 | Government | -780 |

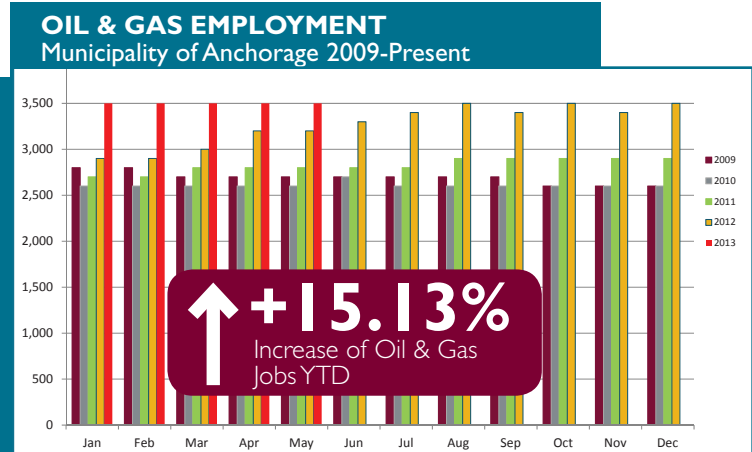
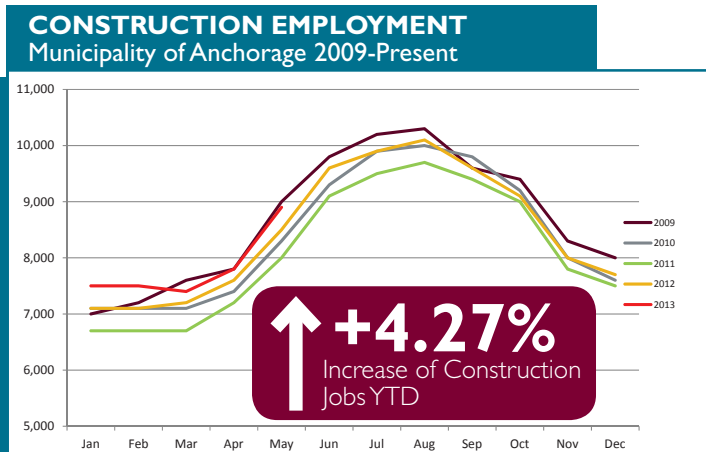
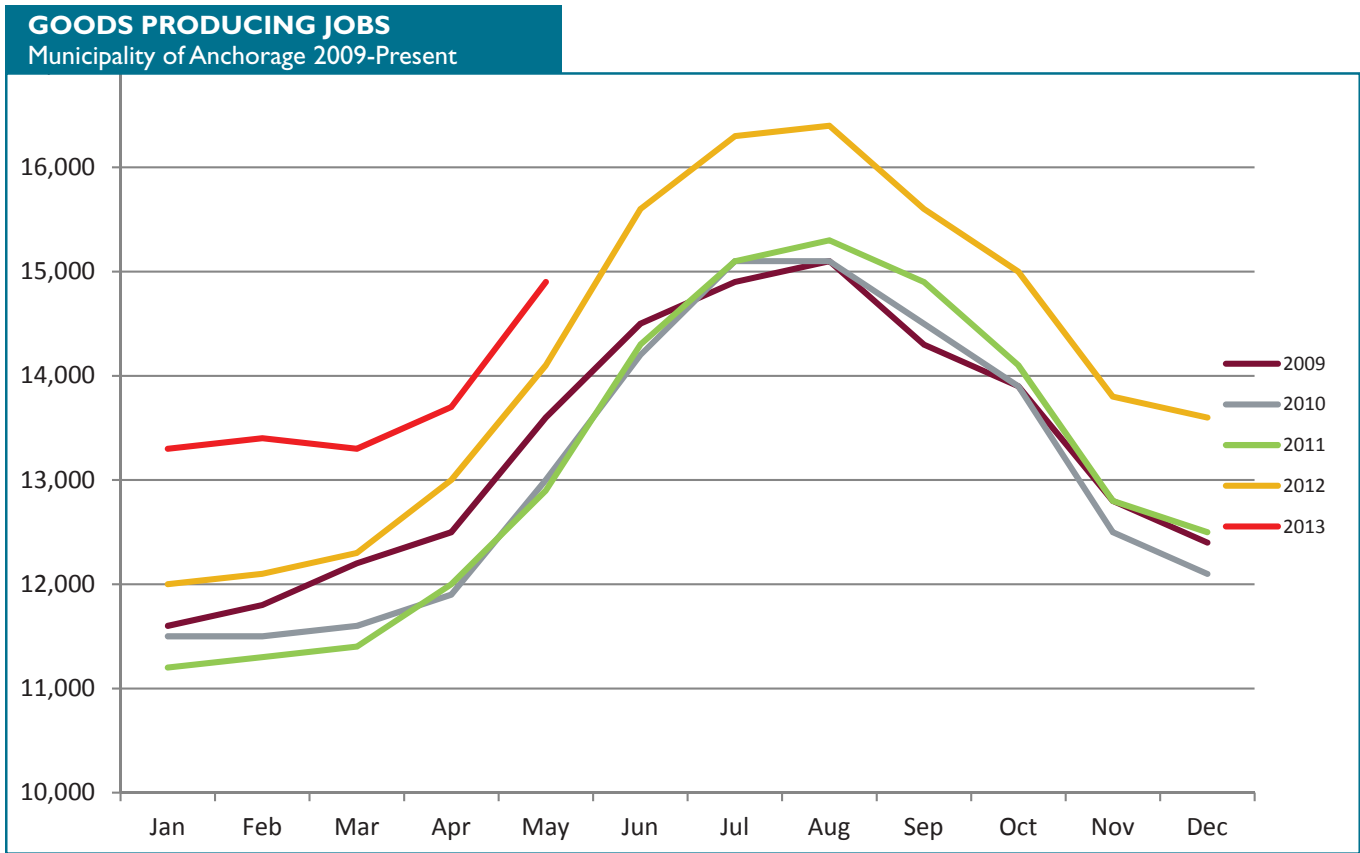
GOODS PRODUCING JOBS

CONSTRUCTION WORK, MINING, OIL & GAS PRODUCTION, MANUFACTURING

Goods producing jobs (those jobs that are specifically tied to production, not those which support the production or maintenance of the production jobs) are showing remarkable growth, **AVERAGING 1,020 MORE JOBS IN 2013 YTD** over the same period in 2012.

The oil & gas sector is leading the way, with 460 more jobs than last year at this point, equalling a growth rate more than 15 percent. May came with announcements of a number of new and expanded resource extraction projects throughout Alaska. More announcements are expected as companies respond positively to the State's newly implemented tax structure.

The construction industry is seeing higher job numbers in May, averaging 320 more jobs over 2012 YTD. Municipal building permit valuations are up nearly 26 percent YTD over last year, indicating a strong construction season. New permits applied for in May included one for KTUU's new facilities and the continuation of ML&P's Phase II natural gas piping replacement project at George M. Sullivan Generation Plant #2.

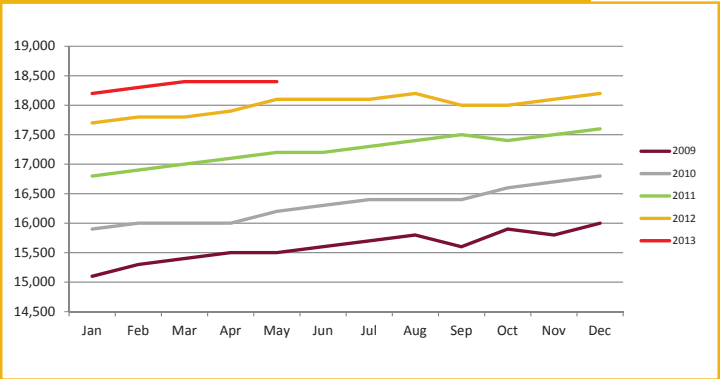


••••• SERVICES PRODUCING JOBS SUMMARY

HEALTH CARE EMPLOYMENT

The health care industry is still going strong, with **480 MORE JOBS** over 2012 YTD. The 2.69 percent YTD job growth in the local health care sector is below 2012's end of year rate, but is still one of the fastest growing service producing industries. If this trend continues through the year, the sector will beat AEDC's January projection of 400 additional health care jobs. Health care has been identified by the state Department of Labor as the industry with the highest growth potential in Alaska for the next decade.

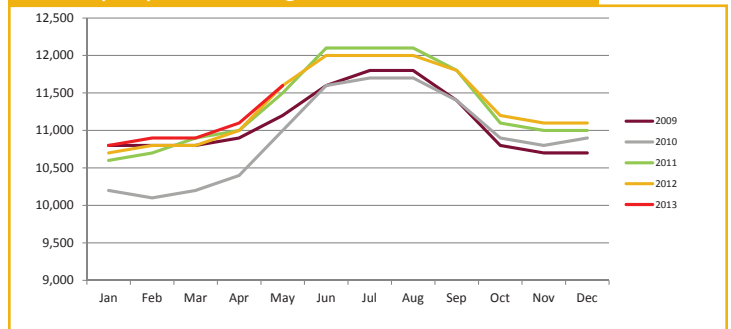
HEALTH CARE EMPLOYMENT
Municipality of Anchorage 2009-Present



TRANSPORTATION

The May estimate of 11,600 jobs is the same level as 2012. The YTD average is 80 jobs higher. AEDC estimates that this industry should retain 100 jobs by the end of the year. First quarter cargo and passenger totals at the Ted Stevens Anchorage International Airport were significantly lower than Q1 of 2012, but this has not yet impacted job growth in this industry. Improvements in retail trade may be helping to bolster job numbers with traffic through the Port of Anchorage.

TRANSPORTATION EMPLOYMENT
Municipality of Anchorage 2009-Present

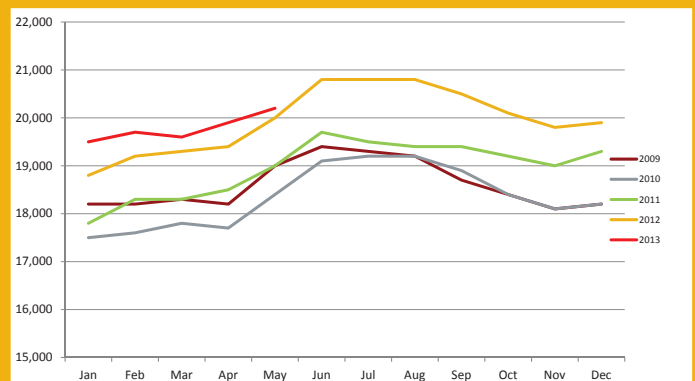


PROFESSIONAL & BUSINESS SERVICES

ENGINEERING, ARCHITECTURE, LEGAL SERVICES, ACCOUNTING, SCIENTIFIC RESEARCH, WASTE MANAGEMENT & ADMINISTRATIVE SERVICES

The YTD average is **up 440 jobs from 2012** and the rate of increase is one of the **largest of all the service providing industries** at 2.28 percent. Job growth within this industry is often tied to growth in other industries such as oil & gas, construction and transportation. As these goods producing industries continue to grow, more positions in professional and business services are expected.

PROFESSIONAL & BUSINESS SERVICES EMPLOYMENT
Municipality of Anchorage 2009-Present



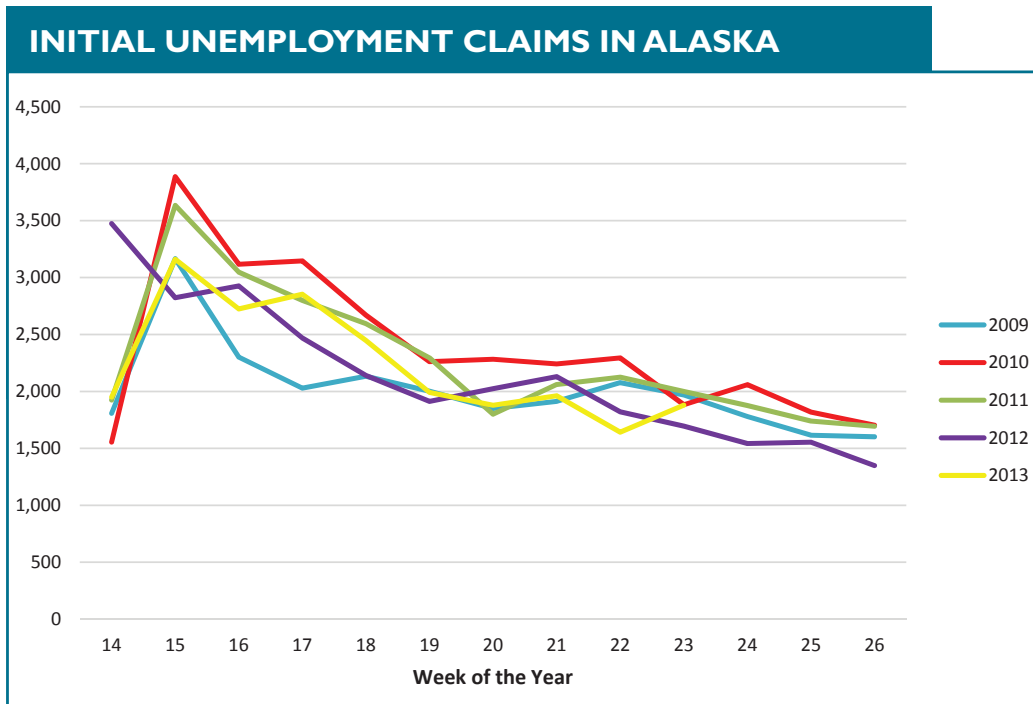
↑ Increase of Professional & Business Services jobs
440
YTD

↑ **2.28%**
Increase of Professional & Business Services Jobs
YTD

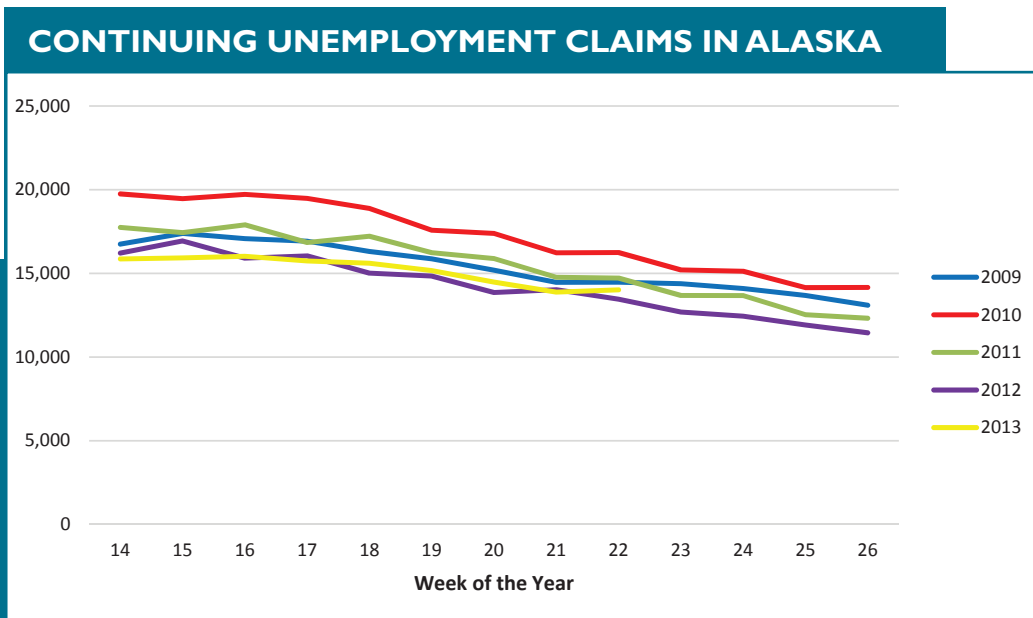
↑ **19,780**
Professional & Business Services Jobs YTD

UNEMPLOYMENT CLAIMS

Initial unemployment claim applications can be interpreted as a proxy for layoffs. They tend to fall as job growth accelerates.



Continuing claims figures helps to show how well unemployed workers are re-entering the workforce. This total does not include workers receiving extended benefits from the federal government. So far, the second quarter totals are very positive, with continuing claims remaining near 2012's low levels. While initial claims are not dropping as quickly as they had in the first quarter, they are still trending down, suggesting that workers are having more success finding new employment.



All data referenced in this employment report is from the State of Alaska, Dept. of Labor & Workforce Development website: www.laborstats.alaska.gov

UNEMPLOYMENT ANALYSIS (YTD, 2013)

Anchorage, Mat-Su, Kenai Peninsula Borough

| | Jan | Feb | Mar | Apr | May | Jun | Jul | Aug | Sep | Oct | Nov | Dec | 13 YTD Avg | 12 YTD Avg | 13 vs 12 |
|----------------------------------|---------|---------|---------|---------|---------|---------|---------|---------|---------|---------|---------|---------|------------|------------|----------|
| Municipality of Anchorage | | | | | | | | | | | | | | | |
| Labor Force | 157,275 | 156,926 | 155,566 | 155,408 | 155,408 | 157,120 | 157,120 | 156,117 | 148,240 | 147,930 | 148,240 | 147,930 | 156,117 | 157,120 | (1,003) |
| Employment | 148,567 | 148,914 | 147,987 | 147,673 | 148,057 | 147,987 | 147,930 | 148,057 | 148,057 | 148,057 | 148,057 | 148,057 | 148,240 | 147,930 | 309 |
| Unemployment | 8,708 | 8,012 | 7,579 | 7,735 | 7,351 | 9,143 | 9,190 | 8,060 | 7,223 | 7,223 | 7,223 | 7,223 | 7,823 | 9,189 | (1,366) |
| Unemployment Rate | 5.5% | 5.1% | 4.9% | 4.8% | 4.7% | 5.7% | 5.7% | 5.1% | 4.9% | 4.9% | 4.6% | 4.9% | 5.0% | 5.8% | -0.8% |
| Mat-Su Borough | | | | | | | | | | | | | | | |
| Labor Force | 44,213 | 44,004 | 43,489 | 43,078 | 42,934 | 44,213 | 44,213 | 43,544 | 40,199 | 40,115 | 40,199 | 40,115 | 43,544 | 44,268 | (724) |
| Employment | 40,288 | 40,382 | 40,130 | 40,045 | 40,149 | 40,288 | 40,288 | 40,199 | 40,115 | 40,115 | 40,115 | 40,115 | 40,199 | 40,115 | 84 |
| Unemployment | 3,925 | 3,622 | 3,359 | 3,033 | 2,785 | 3,925 | 3,925 | 3,345 | 3,084 | 3,084 | 3,084 | 3,084 | 3,345 | 4,153 | (808) |
| Unemployment Rate | 8.9% | 8.2% | 7.7% | 7.0% | 6.5% | 9.3% | 9.3% | 7.7% | 7.7% | 7.7% | 7.7% | 7.7% | 7.7% | 9.4% | -1.7% |
| Kenai Peninsula Borough | | | | | | | | | | | | | | | |
| Labor Force | 26,413 | 26,491 | 26,735 | 26,919 | 27,768 | 26,413 | 26,413 | 26,865 | 24,676 | 23,973 | 24,676 | 23,973 | 26,865 | 26,631 | 234 |
| Employment | 23,879 | 24,123 | 24,546 | 24,928 | 25,904 | 23,879 | 23,879 | 24,676 | 24,928 | 23,973 | 24,676 | 23,973 | 24,676 | 23,973 | 703 |
| Unemployment | 2,534 | 2,368 | 2,189 | 1,991 | 1,864 | 2,534 | 2,534 | 2,189 | 2,050 | 1,999 | 2,189 | 2,050 | 2,189 | 2,658 | (469) |
| Unemployment Rate | 9.6% | 8.9% | 8.2% | 7.4% | 6.7% | 9.6% | 9.6% | 8.1% | 8.1% | 8.1% | 8.1% | 8.1% | 8.1% | 10.0% | -1.8% |
| Southcentral Region | | | | | | | | | | | | | | | |
| Labor Force | 227,901 | 227,421 | 225,790 | 225,405 | 226,110 | 227,901 | 227,901 | 226,525 | 213,114 | 212,018 | 213,114 | 212,018 | 226,525 | 228,018 | (1,493) |
| Employment | 212,734 | 213,419 | 212,663 | 212,646 | 214,110 | 212,734 | 212,734 | 213,114 | 213,114 | 212,018 | 213,114 | 212,018 | 213,114 | 212,018 | 1,097 |
| Unemployment | 15,167 | 14,002 | 13,127 | 12,759 | 12,000 | 15,167 | 15,167 | 13,357 | 13,357 | 16,000 | 13,357 | 16,000 | 13,357 | 16,000 | (2,643) |
| Unemployment Rate | 6.7% | 6.2% | 5.8% | 5.5% | 5.3% | 6.7% | 6.7% | 5.9% | 5.9% | 7.0% | 5.9% | 7.0% | 5.9% | 7.0% | -1.1% |
| State of Alaska | | | | | | | | | | | | | | | |
| Labor Force | 361,085 | 362,187 | 360,100 | 359,422 | 364,321 | 361,085 | 361,085 | 361,423 | 337,193 | 334,464 | 337,193 | 334,464 | 361,423 | 362,790 | (1,367) |
| Employment | 333,414 | 336,610 | 336,463 | 336,984 | 342,496 | 333,414 | 333,414 | 337,193 | 337,193 | 334,464 | 337,193 | 334,464 | 337,193 | 334,464 | 2,729 |
| Unemployment | 27,671 | 25,577 | 23,637 | 22,438 | 21,825 | 27,671 | 27,671 | 24,230 | 24,230 | 28,326 | 24,230 | 28,326 | 24,230 | 28,326 | (4,096) |
| Unemployment Rate | 7.7% | 7.1% | 6.6% | 6.2% | 6.0% | 7.7% | 7.7% | 6.7% | 6.7% | 8.5% | 6.7% | 8.5% | 6.7% | 7.8% | -1.1% |

*Note: These numbers reflect employment, unemployment, etc. for only those people that are residence of the specified City/Region, thus are not inclusive of people who commute to another city for their jobs. (Ex. Someone lives in Wasilla but works in Anchorage. They would be counted in the Mat-Su Borough's labor force and employment numbers, not the Municipality of Anchorage numbers)

INDUSTRY EMPLOYMENT ESTIMATES 2013

Municipality of Anchorage

| Industry | Jan | Feb | Mar | Apr | May | Jun | Jul | Aug | Sep | Oct | Nov | Dec | 2013 YTD Avg. | 2012 YTD Avg. | 2013 vs 2012 YTD Change | % Change |
|---------------------------------|---------|---------|---------|---------|-------------|-----|-----|-----|-----|-----|-----|-----|---------------|---------------|-------------------------|----------|
| | revised | revised | revised | revised | preliminary | | | | | | | | | | | |
| Total Nonfarm | 153,000 | 154,300 | 154,900 | 156,500 | 158,800 | | | | | | | | 155,500 | 154,000 | 1,500 | 0.97% |
| Goods Producing | 13,300 | 13,400 | 13,300 | 13,700 | 14,900 | | | | | | | | 13,720 | 12,700 | 1,020 | 8.03% |
| Services Providing | 139,600 | 141,000 | 141,600 | 142,800 | 143,800 | | | | | | | | 141,760 | 141,320 | 440 | 0.31% |
| Mining and Logging ¹ | 3,600 | 3,700 | 3,700 | 3,700 | 3,700 | | | | | | | | 3,680 | 3,180 | 500 | 15.72% |
| Oil & Gas | 3,500 | 3,500 | 3,500 | 3,500 | 3,500 | | | | | | | | 3,500 | 3,040 | 460 | 15.13% |
| Construction | 7,500 | 7,500 | 7,400 | 7,800 | 8,900 | | | | | | | | 7,820 | 7,500 | 320 | 4.27% |
| Manufacturing | 2,200 | 2,200 | 2,200 | 2,300 | 2,400 | | | | | | | | 2,260 | 2,040 | 220 | 10.78% |
| Trade/Transportation/Utilities | 32,000 | 31,900 | 31,900 | 32,300 | 33,100 | | | | | | | | 32,240 | 32,240 | 0 | 0.00% |
| Wholesale Trade | 4,300 | 4,300 | 4,400 | 4,400 | 4,400 | | | | | | | | 4,360 | 4,460 | -100 | -2.24% |
| Retail Trade | 16,900 | 16,700 | 16,600 | 16,800 | 17,100 | | | | | | | | 16,820 | 16,800 | 20 | 0.12% |
| Trans/Warehouse/Utilities | 10,800 | 10,900 | 10,900 | 11,100 | 11,600 | | | | | | | | 11,060 | 10,980 | 80 | 0.73% |
| Air Transportation | 2,900 | 2,900 | 2,900 | 2,900 | 3,000 | | | | | | | | 2,920 | 2,900 | 20 | 0.69% |
| Information | 3,800 | 3,800 | 3,800 | 3,800 | 3,800 | | | | | | | | 3,800 | 3,900 | -100 | -2.56% |
| Financial Activities | 7,900 | 8,000 | 8,000 | 8,100 | 8,200 | | | | | | | | 8,040 | 8,060 | -20 | -0.25% |
| Professional & Business Svcs | 19,500 | 19,700 | 19,600 | 19,900 | 20,200 | | | | | | | | 19,780 | 19,340 | 440 | 2.28% |
| Educational & Health Services | 24,900 | 25,100 | 25,300 | 25,500 | 25,600 | | | | | | | | 25,280 | 24,500 | 780 | 3.18% |
| Health Care | 18,200 | 18,300 | 18,400 | 18,400 | 18,400 | | | | | | | | 18,340 | 17,860 | 480 | 2.69% |
| Leisure & Hospitality | 16,100 | 16,400 | 16,800 | 16,900 | 17,400 | | | | | | | | 16,720 | 16,380 | 340 | 2.08% |
| Accommodation | 3,100 | 3,200 | 3,200 | 3,200 | 3,100 | | | | | | | | 3,160 | 3,080 | 80 | 2.60% |
| Food Svcs & Drinking Places | 10,800 | 11,000 | 11,200 | 11,500 | 11,800 | | | | | | | | 11,260 | 11,100 | 160 | 1.44% |
| Other Services | 5,600 | 5,600 | 5,700 | 5,600 | 5,700 | | | | | | | | 5,640 | 5,720 | -80 | -1.40% |
| Government | 29,800 | 30,600 | 30,500 | 30,800 | 29,900 | | | | | | | | 30,320 | 31,100 | -780 | -2.51% |
| Federal Government | 8,900 | 8,800 | 8,800 | 8,700 | 8,700 | | | | | | | | 8,780 | 9,220 | -440 | -4.77% |
| State Government | 10,200 | 11,000 | 11,000 | 11,100 | 10,500 | | | | | | | | 10,760 | 10,640 | 120 | 1.13% |
| State Education | 2,100 | 3,000 | 2,900 | 3,000 | 2,300 | | | | | | | | 2,660 | 2,600 | 60 | 2.31% |
| Local Government | 10,800 | 10,800 | 10,700 | 11,000 | 10,800 | | | | | | | | 10,820 | 11,280 | -460 | -4.08% |
| Local Education | 8,000 | 8,000 | 7,900 | 8,100 | 8,000 | | | | | | | | 8,000 | 8,440 | -440 | -5.21% |

- Nonfarm Wage & Salary excludes self-employed workers, fishers, domestics, and unpaid family workers.

- All totals are seasonally non-adjusted totals.

- Government includes employees of public school systems and the University of Alaska.

- Beginning January 2001, wage and salary employment estimates were published under a new classification system. The Standard Industrial Classification system (SIC) has been replaced by the North American Industry Classification System (NAICS). Data prior to 2001 are comparable only at the Total Nonfarm and Government levels.

¹ As of January 2001, certain federally-recognized tribal entities were moved to Local Government, which created a series break for Total Government and Local Government. Please see the April 2002 Alaska Economic Trends publication for a detailed explanation.

² This category was called "Natural Resources and Mining" in previous years. The change is in name only; the industries it includes remain the same.

- Some totals may not equal components due to rounding.

- Source: Alaska Department of Labor and Workforce Development, Research and Analysis Section

*** Note:** The above numbers are representative of all people employed in the Municipality of Anchorage; this is inclusive of workers who claim residence outside of the Municipality of Anchorage. (Ex: someone who lives in the Mat-Su, but works in Anchorage would be included in these number)

Quick Comparisons

| | | |
|----------|-------|-------|
| 13 vs 12 | 1,200 | 0.76% |
| May | | |
| 13 vs 12 | 1,567 | 1.03% |
| 1st Qtr | | |
| 13 vs 12 | 1,400 | 0.90% |
| 2nd Qtr | | |
| 13 vs 12 | | |
| 3rd Qtr | | |
| 13 vs 12 | | |
| 4th Qtr | | |

INDUSTRY EMPLOYMENT ESTIMATES 2013

State of Alaska

| Industry | Jan revised | Feb revised | Mar revised | Apr revised | May preliminary | Jun | Jul | Aug | Sep | Oct | Nov | Dec | 2013 YTD Avg. | 2012 YTD Avg. | 2013 vs 2012 YTD Change | % Change |
|---------------------------------|-------------|-------------|-------------|-------------|-----------------|-----|-----|-----|-----|-----|-----|-----|---------------|---------------|-------------------------|----------|
| Total Nonfarm | 314,200 | 321,400 | 323,800 | 326,500 | 333,800 | | | | | | | | 323,940 | 323,440 | 500 | 0.15% |
| Goods Producing | 40,100 | 42,900 | 43,500 | 43,900 | 44,000 | | | | | | | | 42,880 | 42,820 | 60 | 0.14% |
| Services Providing | 274,100 | 278,500 | 280,300 | 282,600 | 289,800 | | | | | | | | 281,060 | 280,620 | 440 | 0.16% |
| Mining and Logging ² | 16,600 | 17,100 | 17,300 | 17,500 | 17,800 | | | | | | | | 17,260 | 16,180 | 1,080 | 6.67% |
| Mining | 16,400 | 16,800 | 16,900 | 17,000 | 17,200 | | | | | | | | 16,860 | 15,940 | 920 | 5.77% |
| Oil & Gas | 13,600 | 13,900 | 14,000 | 14,100 | 14,300 | | | | | | | | 13,980 | 13,120 | 860 | 6.55% |
| Construction | 14,300 | 14,900 | 15,100 | 15,700 | 17,100 | | | | | | | | 15,420 | 14,180 | 1,240 | 8.74% |
| Manufacturing | 9,200 | 10,900 | 11,100 | 10,700 | 9,100 | | | | | | | | 10,200 | 12,460 | -2,260 | -18.14% |
| Seafood Processing | 5,600 | 7,300 | 7,400 | 6,700 | 5,000 | | | | | | | | 6,400 | 8,980 | -2,580 | -28.73% |
| Trade/Transportation/Utilities | 61,000 | 60,400 | 61,000 | 62,400 | 66,400 | | | | | | | | 62,240 | 61,180 | 1,060 | 1.73% |
| Wholesale Trade | 5,900 | 5,800 | 5,900 | 5,900 | 5,900 | | | | | | | | 5,880 | 6,080 | -200 | -3.29% |
| Retail Trade | 34,800 | 34,100 | 34,400 | 35,200 | 36,900 | | | | | | | | 35,080 | 34,700 | 380 | 1.10% |
| Food & Beverage Stores | 6,100 | 6,100 | 6,000 | 6,000 | 6,100 | | | | | | | | 6,060 | 6,040 | 20 | 0.33% |
| General Merchandise Stores | 9,800 | 9,500 | 9,700 | 9,800 | 10,200 | | | | | | | | 9,800 | 9,700 | 100 | 1.03% |
| Trans/Warehouse/Utilities | 20,300 | 20,500 | 20,700 | 21,300 | 23,600 | | | | | | | | 21,280 | 20,400 | 880 | 4.31% |
| Air Transportation | 5,500 | 5,400 | 5,500 | 5,600 | 6,000 | | | | | | | | 5,600 | 5,600 | 0 | 0.00% |
| Information | 6,000 | 6,100 | 6,100 | 6,000 | 6,100 | | | | | | | | 6,060 | 6,220 | -160 | -2.57% |
| Telecommunications | 3,900 | 3,900 | 3,900 | 3,900 | 4,000 | | | | | | | | 3,920 | 4,160 | -240 | -5.77% |
| Financial Activities | 12,900 | 13,000 | 13,100 | 13,100 | 13,500 | | | | | | | | 13,120 | 13,140 | -20 | -0.15% |
| Professional & Business Svcs | 27,000 | 27,900 | 27,200 | 27,900 | 28,700 | | | | | | | | 27,740 | 27,720 | 20 | 0.07% |
| Educational & Health Services | 47,000 | 47,400 | 47,700 | 47,700 | 47,400 | | | | | | | | 47,440 | 46,000 | 1,440 | 3.13% |
| Health Care | 33,400 | 33,500 | 33,800 | 33,500 | 33,800 | | | | | | | | 33,600 | 32,580 | 1,020 | 3.13% |
| Leisure & Hospitality | 27,800 | 28,400 | 29,400 | 29,500 | 33,200 | | | | | | | | 29,660 | 30,140 | -480 | -1.59% |
| Accommodation | 6,500 | 6,500 | 6,600 | 6,700 | 7,700 | | | | | | | | 6,800 | 6,660 | 140 | 2.10% |
| Food Svcs & Drinking Places | 17,600 | 18,100 | 18,700 | 18,800 | 20,900 | | | | | | | | 18,820 | 19,220 | -400 | -2.08% |
| Other Services | 11,200 | 11,200 | 11,400 | 11,400 | 11,600 | | | | | | | | 11,360 | 11,460 | -100 | -0.87% |
| Government | 81,200 | 84,100 | 84,400 | 84,600 | 82,900 | | | | | | | | 83,440 | 84,760 | -1,320 | -1.56% |
| Federal Government | 14,800 | 14,700 | 14,900 | 14,900 | 15,200 | | | | | | | | 14,900 | 16,300 | -1,400 | -8.59% |
| State Government | 24,500 | 26,700 | 26,800 | 26,900 | 25,700 | | | | | | | | 26,120 | 26,040 | 80 | 0.31% |
| State Education | 6,600 | 8,800 | 8,700 | 8,700 | 7,500 | | | | | | | | 8,060 | 8,020 | 40 | 0.50% |
| Local Government | 41,900 | 42,700 | 42,700 | 42,800 | 42,000 | | | | | | | | 42,420 | 42,420 | 0 | 0.00% |
| Local Education | 23,600 | 24,300 | 24,100 | 24,100 | 23,000 | | | | | | | | 23,820 | 24,660 | -840 | -3.41% |
| Tribal Government ¹ | 3,400 | 3,400 | 3,500 | 3,400 | 3,400 | | | | | | | | 3,420 | 3,480 | -60 | -1.72% |

- Nonfarm Wage & Salary excludes self-employed workers, fishers, domestics, and unpaid family workers.

- All totals are non-seasonally adjusted totals.

- Government includes employees of public school systems and the University of Alaska.

- Beginning January 2001, wage and salary employment estimates were published under a new classification system. The Standard Industrial Classification system (SIC) has been replaced by the North American Industry Classification System (NAICS). Data prior to 2001 are comparable only at the Total Nonfarm and Government levels.

^{1/} As of January 2001, certain federally-recognized tribal entities were moved to Local Government, which created a series break for Total Government and Local Government. Please see the April 2002 Alaska Economic Trends publication for a detailed explanation.

^{2/} This category was called "Natural Resources and Mining" in previous years. The change is in name only; the industries it includes remain the same.

- Totals may not equal sub-sections due to rounding.

- Source: Alaska Department of Labor and Workforce Development, Research and Analysis Section

| Quick Comparisons | |
|-------------------|---------------|
| 13 vs 12 May | -3,500 -1.04% |
| 13 vs 12 1st Qtr | 1,900 0.60% |
| 13 vs 12 2nd Qtr | -1,600 -0.48% |
| 13 vs 12 3rd Qtr | |
| 13 vs 12 4th Qtr | |

Dianne Blumer
Commissioner
P.O. Box 111149
Juneau, AK 99811-1149
www.labor.alaska.gov



Beth Leschper
Communications Director
907.465.2700
cell: 907.723.1321
beth.leschper@alaska.gov

Press Release

COMMISSIONER'S OFFICE

June 21, 2013

No. 13-30

Unemployment rate at 5.9 percent in May

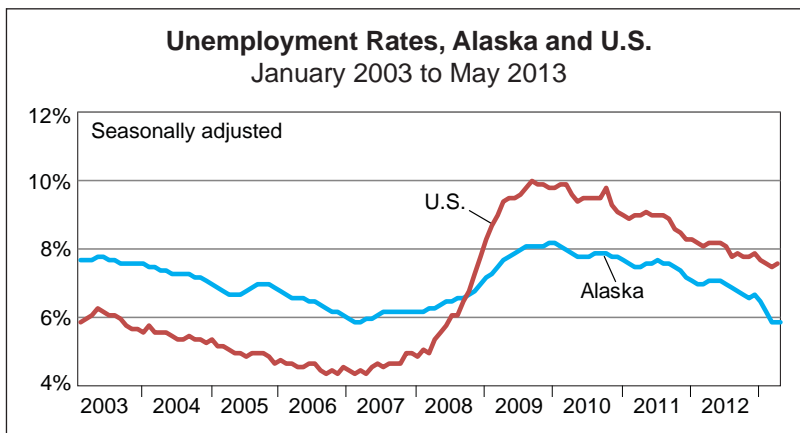
Alaska's seasonally adjusted unemployment rate was 5.9 percent in May, unchanged from April's revised rate. The comparable U.S. rate was 7.6 percent.

Before April, Alaska's rate had dipped as low as 5.9 percent only once, in the spring of 2007. However, it's worth noting that large revisions are possible at the end of the year.

May's not seasonally adjusted rate was 6.0 percent in May, down two-tenths of a percentage point from April's 6.2 percent. Summer economic activity kicked into gear across the state as unemployment rates fell in 21 out of 29 boroughs and census areas. The biggest declines were in Skagway and the Denali Borough, both heavily dependent on tourism, where rates fell by 11.7 and 9.7 percentage points respectively. Skagway's rate fell to 2.7 percent, the lowest in the state, followed by the Bristol Bay Borough at 3.2 percent.

Rates increased in seven boroughs and census areas and remained the same in one. The largest jumps were in the Aleutians East Borough and Aleutians West Census Area, where rates climbed 11.0 and 5.7 percentage points respectively. May is sandwiched between winter and late-summer western fisheries, and is typically a slow month for the Aleutian chain.

Contact: Caroline Schultz, Economist (907) 465-6027
Research and Analysis Web site: <http://laborstats.alaska.gov>



| Unemployment Rates, Seasonally Adjusted | | | |
|---|------|------|------|
| | 5/13 | 4/13 | 5/12 |
| Alaska | 5.9% | 5.9% | 7.1% |
| U.S. | 7.6% | 7.5% | 8.2% |

Sources for graph and table: Alaska Department of Labor and Workforce Development, Research and Analysis Section; and U.S. Bureau of Labor Statistics

For detailed employment estimates, see <http://live.laborstats.alaska.gov/ces/>. The estimates are preliminary and subject to potentially large revisions.

Labor Force by Borough and Census Area, Not Seasonally Adjusted¹

| | Civilian Labor Force | | | Unemployed | | | | | |
|-----------------------------------|----------------------|----------------|----------------|-------------------|---------------|---------------|-------------------|-------------|-------------|
| | 5/13 ^P | 4/13 | 5/12 | Number | | | Rate | | |
| | | | | 5/13 ^P | 4/13 | 5/12 | 5/13 ^P | 4/13 | 5/12 |
| Alaska Statewide | 364,321 | 359,422 | 367,341 | 21,825 | 22,438 | 25,363 | 6.0 | 6.2 | 6.9 |
| Anchorage/Mat-Su Region | 198,342 | 198,218 | 199,969 | 10,136 | 10,500 | 12,062 | 5.1 | 5.3 | 6.0 |
| Anchorage, Municipality of | 155,408 | 155,140 | 156,538 | 7,351 | 7,467 | 8,716 | 4.7 | 4.8 | 5.6 |
| Matanuska-Susitna Borough | 42,934 | 43,078 | 43,431 | 2,785 | 3,033 | 3,346 | 6.5 | 7.0 | 7.7 |
| Gulf Coast Region | 39,763 | 38,749 | 40,039 | 2,593 | 2,756 | 3,063 | 6.5 | 7.1 | 7.7 |
| Kenai Peninsula Borough | 27,768 | 26,919 | 28,042 | 1,864 | 1,991 | 2,238 | 6.7 | 7.4 | 8.0 |
| Kodiak Island Borough | 6,726 | 6,936 | 6,721 | 318 | 328 | 385 | 4.7 | 4.7 | 5.7 |
| Valdez-Cordova Census Area | 5,269 | 4,894 | 5,276 | 411 | 437 | 440 | 7.8 | 8.9 | 8.3 |
| Interior Region | 55,393 | 53,267 | 55,850 | 3,304 | 3,425 | 3,833 | 6.0 | 6.4 | 6.9 |
| Denali Borough | 1,638 | 783 | 1,623 | 100 | 124 | 124 | 6.1 | 15.8 | 7.6 |
| Fairbanks North Star Borough | 46,975 | 45,988 | 47,572 | 2,432 | 2,512 | 2,874 | 5.2 | 5.5 | 6.0 |
| Southeast Fairbanks Census Area | 3,456 | 3,306 | 3,375 | 330 | 348 | 354 | 9.5 | 10.5 | 10.5 |
| Yukon-Koyukuk Census Area | 3,324 | 3,190 | 3,280 | 442 | 441 | 481 | 13.3 | 13.8 | 14.7 |
| Northern Region | 12,701 | 13,311 | 12,564 | 1,147 | 1,122 | 1,265 | 9.0 | 8.4 | 10.1 |
| Nome Census Area | 4,179 | 4,381 | 4,121 | 466 | 451 | 496 | 11.2 | 10.3 | 12.0 |
| North Slope Borough | 5,463 | 5,799 | 5,382 | 256 | 250 | 287 | 4.7 | 4.3 | 5.3 |
| Northwest Arctic Borough | 3,059 | 3,131 | 3,061 | 425 | 421 | 482 | 13.9 | 13.4 | 15.7 |
| Southeast Region | 40,384 | 38,152 | 41,113 | 2,129 | 2,326 | 2,557 | 5.3 | 6.1 | 6.2 |
| Haines Borough | 1,322 | 1,190 | 1,339 | 83 | 96 | 97 | 6.3 | 8.1 | 7.2 |
| Hoonah-Angoon Census Area | 1,369 | 877 | 1,402 | 156 | 158 | 179 | 11.4 | 18.0 | 12.8 |
| Juneau, City and Borough of | 18,663 | 18,100 | 18,934 | 725 | 781 | 854 | 3.9 | 4.3 | 4.5 |
| Ketchikan Gateway Borough | 8,280 | 7,632 | 8,435 | 440 | 494 | 532 | 5.3 | 6.5 | 6.3 |
| Petersburg Census Area | 1,632 | 1,589 | 1,703 | 120 | 139 | 179 | 7.4 | 8.7 | 10.5 |
| Prince of Wales-Hyder Census Area | 2,440 | 2,346 | 2,495 | 288 | 282 | 326 | 11.8 | 12.0 | 13.1 |
| Sitka, City and Borough of | 4,558 | 4,607 | 4,649 | 209 | 206 | 263 | 4.6 | 4.5 | 5.7 |
| Skagway, Municipality of | 786 | 529 | 798 | 21 | 76 | 27 | 2.7 | 14.4 | 3.4 |
| Wrangell, City and Borough of | 1,042 | 1,009 | 1,059 | 65 | 72 | 74 | 6.2 | 7.1 | 7.0 |
| Yakutat, City and Borough of | 292 | 273 | 299 | 22 | 22 | 26 | 7.5 | 8.1 | 8.7 |
| Southwest Region | 17,740 | 17,727 | 17,806 | 2,518 | 2,309 | 2,583 | 14.2 | 13.0 | 14.5 |
| Aleutians East Borough | 891 | 1,489 | 908 | 163 | 108 | 179 | 18.3 | 7.3 | 19.7 |
| Aleutians West Census Area | 2,615 | 2,871 | 2,619 | 377 | 251 | 382 | 14.4 | 8.7 | 14.6 |
| Bethel Census Area | 6,984 | 6,897 | 6,971 | 1,064 | 1,057 | 1,060 | 15.2 | 15.3 | 15.2 |
| Bristol Bay Borough | 1,063 | 566 | 1,076 | 34 | 40 | 44 | 3.2 | 7.1 | 4.1 |
| Dillingham Census Area | 2,201 | 2,148 | 2,233 | 192 | 189 | 214 | 8.7 | 8.8 | 9.6 |
| Lake and Peninsula Borough | 1,253 | 995 | 1,265 | 83 | 83 | 94 | 6.6 | 8.3 | 7.4 |
| Wade Hampton Census Area | 2,733 | 2,761 | 2,734 | 605 | 581 | 610 | 22.1 | 21.0 | 22.3 |

P = Preliminary. As more information becomes available, data are revised every month for the previous month and again at the end of every calendar year.

Note: The official definition of unemployment excludes anyone who has not made an active attempt to find work in the four-week period up to and including the week that includes the 12th of the reference month. Many in rural Alaska do not meet the definition because they have not conducted an active job search due to the scarcity of employment opportunities.

¹Unemployment rates that are not seasonally adjusted should not be compared with those that are.

Source: Alaska Department of Labor and Workforce Development, Research and Analysis Section; and U.S. Bureau of Labor Statistics

