



AEDDC  
Anchorage Economic  
Development Corporation

# October 2013 Employment Report Anchorage

Sponsored by:



**First National Bank**  
**A L A S K A**  
MEMBER FDIC

# 4.7%

October Unemployment  
Rate for Anchorage

## MONTHLY UNEMPLOYMENT

The unemployment rate for Anchorage in October was **4.7 percent**, up 0.3 percent from September. This is well below the national rate of 7 percent and the statewide rate of 6.1 percent. The uptick in the rate is unusual – October generally sees a lower rate than September. Seven of the past eight months have had a rate less than five percent; it is expected that 2013 annual rate will be less than five as well. As always, it should be noted that these are preliminary survey figures for October and will be revised next month. AEDC expects to see further revisions in early 2014 upon more detailed analysis.

## YEAR-TO-DATE UNEMPLOYMENT

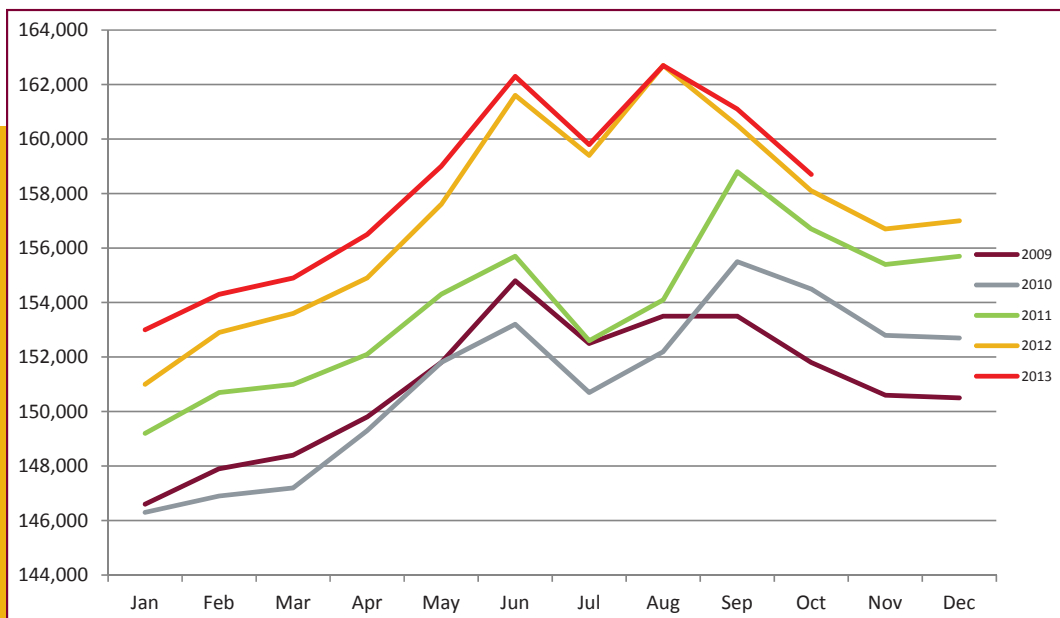
The average year-to-date (YTD) **non-seasonally adjusted unemployment rate in Anchorage was 4.9 percent** at the end of October, which is 0.6 percent lower than the 2012 YTD average. An increase of 84 in the employment total and a decrease of 941 in the Anchorage labor force during the YTD period has resulted in a reduction of 1,051 people in the reported unemployment total. The **total number of unemployed people in Anchorage is estimated at 7,379** (those actively looking for jobs), 55 less than October 2012. In the Mat-Su and Kenai Peninsula Boroughs, the monthly unemployment rate has decreased 14 and 13 percent, respectively, from 2012 YTD (see the charts at the end of this report for more details).

It is important to note that these unemployment numbers represent the labor force residing in Anchorage, and do not include jobs in Anchorage held by residents from outside the municipality. The industry employment estimates referenced in the remainder of this report are representative of all jobs in the Municipality of Anchorage, regardless of the job holder's place of residency.

## ANCHORAGE INDUSTRY EMPLOYMENT ESTIMATES

As for Anchorage industry employment estimates, the YTD average is continuing to show improvement over 2012 with a **total net increase of 1,000 jobs so far**. The private sector (total jobs minus government jobs) has grown by 1,840 jobs during this time, equaling a growth rate of 1.5 percent. **Government employment has declined by 840 jobs so far**, with losses split between federal and local governments.

Industries showing the largest YTD growth rates are mainly in the Goods Producing category, which includes oil & gas, manufacturing and construction. Of Service Providing industries, Educational & Health Services is leading the way with a 2.81 percent YTD growth rate. Seven of the 10 major sector's October 2013 averages are above the YTD monthly average, indicating that the job gains are likely to remain through the year.



**ANCHORAGE EMPLOYMENT**  
Municipality of Anchorage  
2009-Present

## MONTHLY REVISIONS

Each month, the Alaska Department of Labor's Research and Analysis Division revises the previous month employment numbers based on the availability of newer or late arriving data. **Due to the federal government shutdown, there was no preliminary data for September's estimates.** The following tables show the changes in Anchorage's and Alaska's August job totals by industry.

Most adjustments are relatively minor, however, some changes do occur which are significant. Changes such as these are normally the result of rounding errors, job classification modifications, sample size or modeling issues, or errors within the industry.

### AUGUST 2013 REVISIONS, ANCHORAGE

Industry	Preliminary Total	Revised Total	Net Change
Total Nonfarm	163,100	162,700	-400
Goods Producing	16,800	17,000	200
Services Producing	146,300	145,800	-500
Construction	10,200	10,300	100
Trade, Transportation, Utilities	33,900	33,700	-200
Transportation, Warehouse, Utilities	11,900	11,700	-200
Information	3,700	3,800	100
Financial Activities	8,400	8,200	-200
Professional & Business Services	21,300	21,200	-100
Educational & Health Services	25,300	25,200	-100
Leisure & Hospitality	18,200	18,100	-100

### AUGUST 2013 REVISIONS, ALASKA

Industry	Preliminary Total	Revised Total	Net Change
Total Nonfarm	355,200	355,700	+500
Goods Producing	58,600	58,700	+100
Services Providing	296,600	297,000	+400
Construction	21,500	21,600	+100
Seafood Processing	14,000	14,100	+100
Air Transportation	6,400	6,500	+100
Professional & Business Services	29,300	29,400	+100
Health Care	33,800	33,700	-100
Leisure & Hospitality	40,200	40,400	+200
Accommodation	11,500	11,600	+100
Food Services & Drinking Places	22,900	23,000	+100
Other Services	12,100	12,200	+100
Tribal Government	3,600	3,500	-100
Other Services	12,100	12,200	+100

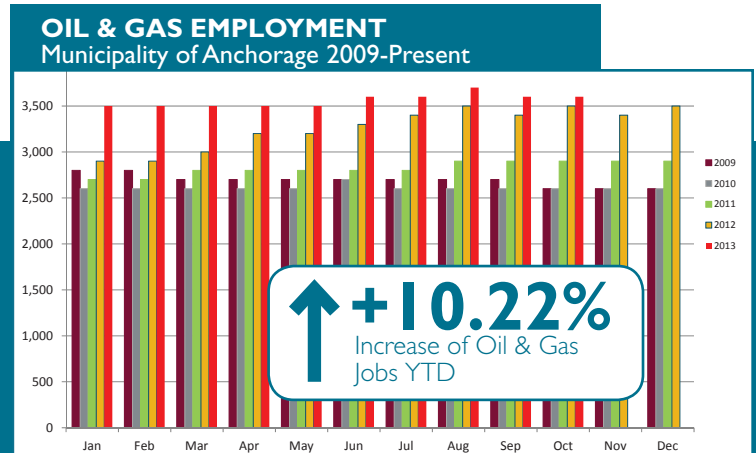
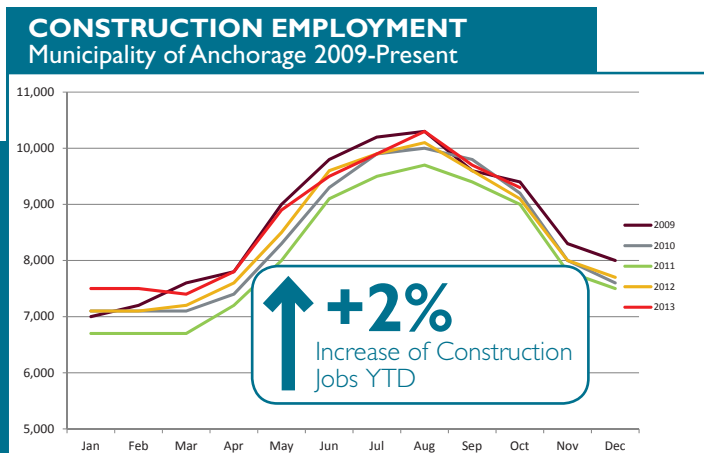
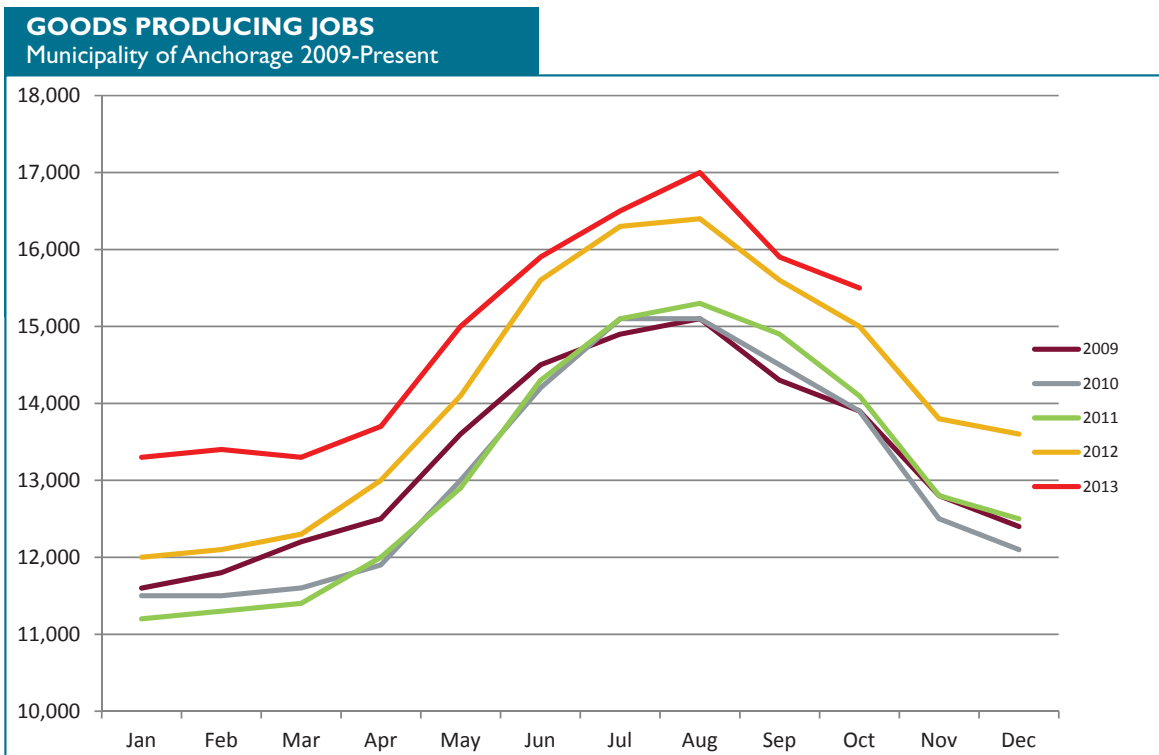
# GOODS PRODUCING JOBS

## CONSTRUCTION WORK, MINING, OIL & GAS PRODUCTION, MANUFACTURING

Goods producing jobs (those jobs that are specifically tied to production, not those which support the production or maintenance of the production jobs) are maintaining the growth seen all year, **averaging 710 more jobs in 2013 YTD over the same period in 2012.**

The **oil & gas sector is still leading the way with 330 more jobs than last year** at this point; a growth rate of **10.22 percent.** Continued exploration and development activity in Cook Inlet by Buccaneer and Hilcorp, along with Cook Inlet Energy's exploration plans for the Susitna Valley are all good indicators of stable employment levels to come.

The construction industry is also doing well this year. **October's estimate of 9,300 jobs is the highest for the month since 2009**, and the YTD average is 200 jobs over 2012 YTD. Municipal building permit valuations remain very high and are up nearly 35 percent YTD from last year, perhaps indicating the annual winter decline of construction jobs may be less severe than recent years.

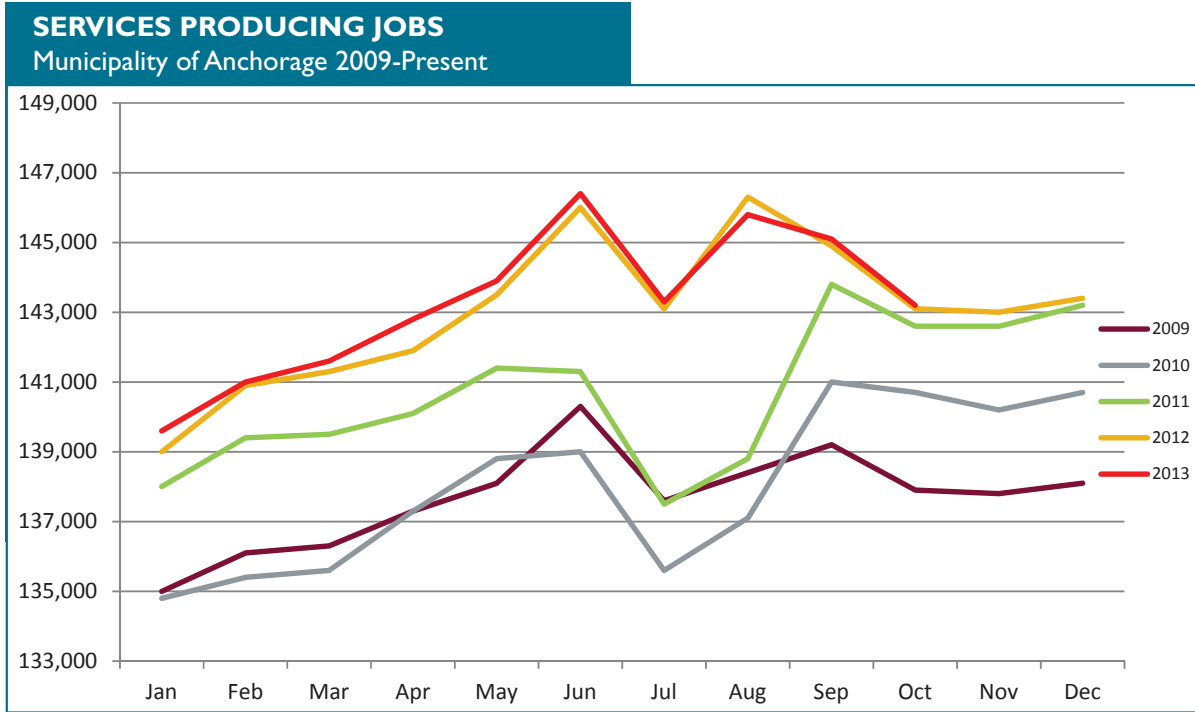


# SERVICES PRODUCING JOBS

ENGINEERING, RETAIL, TOURISM, HEALTH CARE, ETC.

Services producing jobs in Anchorage totaled **143,200** for October. Overall, the YTD average is up 270 jobs from 2012 YTD.

The educational and health services sector's growth rate is 2.81 percent so far this year, making it the highest growth sector in the service industry. Jobs in the leisure and hospitality sector are growing at more than twice the rate of the overall totals at 1.53 percent. Both accommodation and food service sectors are seeing growth, indicating a positive trend in the tourism industry. Federal and local government sectors are both averaging less than this point last year (-460 and -430), but the state government jobs average is up 60 jobs YTD from 2012.



## SERVICES PRODUCING JOBS



Increase of Services Producing Jobs YTD

**270**

**143,200**

Services Producing Jobs in Anchorage for October 2013 (total)

OCT. 12 vs. OCT. 13  
YEAR TO DATE

**Educational & Health Services**

**+690**

**Professional & Business Services**

**+470**

**Information**

**-120**

**Leisure & Hospitality**

**+260**

**Retail**

**flat**

**Government**

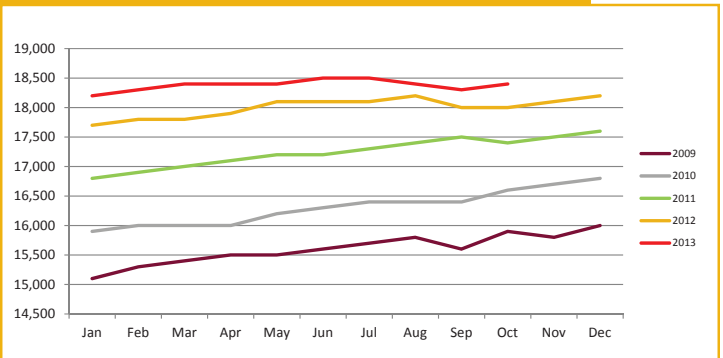
**-840**

# ••••• SERVICES PRODUCING JOBS SUMMARY

## HEALTH CARE EMPLOYMENT

The health care industry is still going strong, with **410 more jobs** over 2012 YTD. The 2.28 percent YTD job growth in the local health care sector is below the 2012 end of year rate, but is still one of the fastest growing service producing industries. Monthly averages have held between 18,200 and 18,500 throughout the year. We are confident that this sector will meet AEDC's January projection of 400 additional health care jobs. Providence Health and Services currently has more than 100 open positions in Anchorage, and Alaska Regional is also actively recruiting for more than 60 employees. Health care has been identified by the State Department of Labor as the industry with the highest growth potential in Alaska for the next decade.

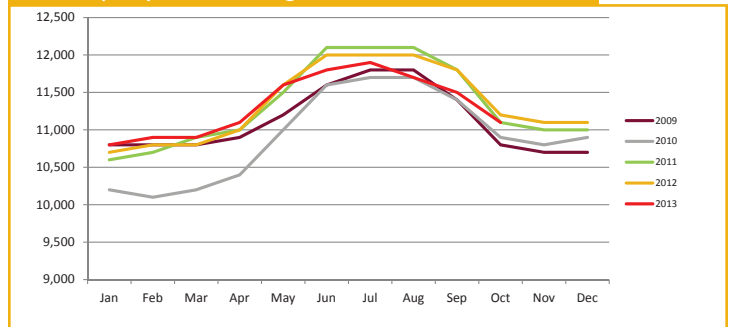
**HEALTH CARE EMPLOYMENT**  
Municipality of Anchorage 2009-Present



## TRANSPORTATION

October's estimate of 11,100 jobs is slightly below 2012 by 100, and the YTD average is slightly down by 60 jobs. Despite decreasing amounts of cargo transiting through the Ted Stevens Anchorage International Airport, the Air Transportation segment of **the industry has added 20 jobs** YTD. Unfortunately, this sector is unlikely to reach AEDC's January estimate of an additional 100 jobs by the end of the year.

**TRANSPORTATION EMPLOYMENT**  
Municipality of Anchorage 2009-Present

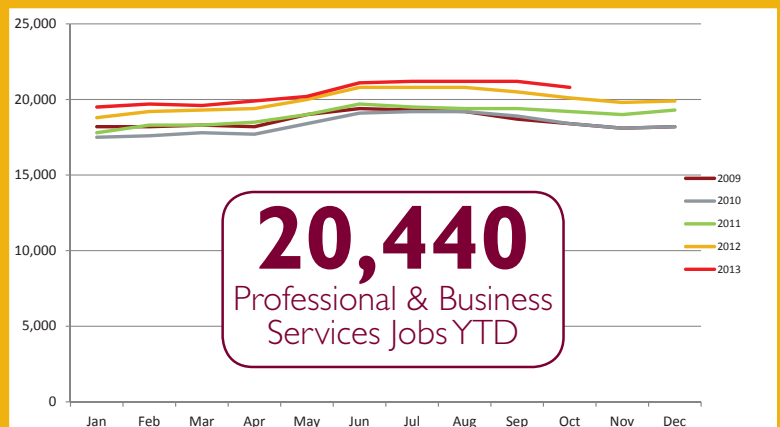


## PROFESSIONAL & BUSINESS SERVICES

ENGINEERING, ARCHITECTURE, LEGAL SERVICES, ACCOUNTING, SCIENTIFIC RESEARCH, WASTE MANAGEMENT & ADMINISTRATIVE SERVICES

**The YTD average continues to improve and is up 470 jobs from 2012.** The rate of increase is one of the largest of all service providing industries at 2.35 percent. Job growth within this industry is often tied to growth in other industries such as oil & gas, construction and transportation. As these goods producing industries continue to grow, more positions in professional and business services are expected.

**PROFESSIONAL & BUSINESS SERVICES EMPLOYMENT**  
Municipality of Anchorage 2009-Present

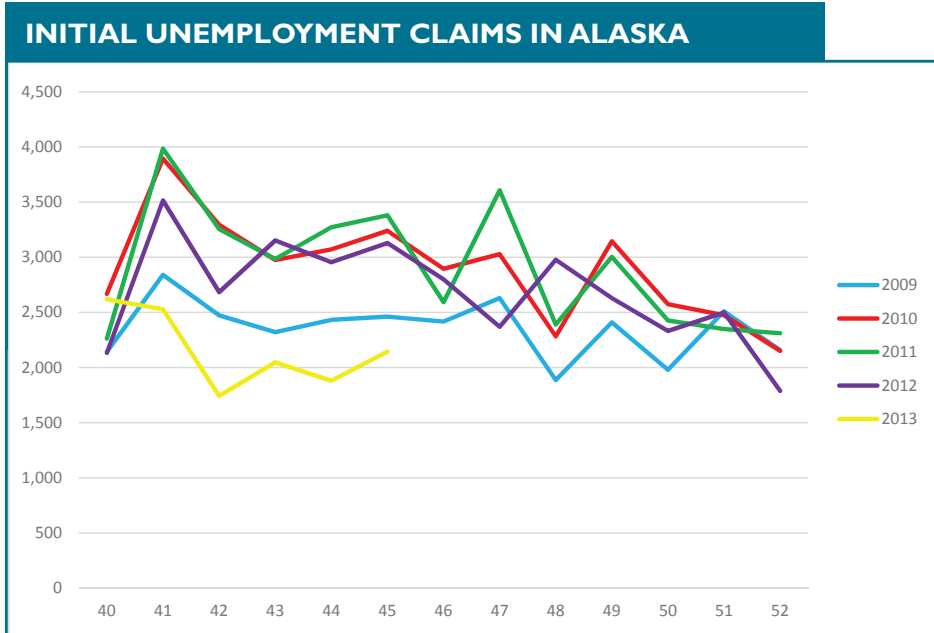


↑ Increase of Professional & Business Services Jobs  
**470**  
YTD

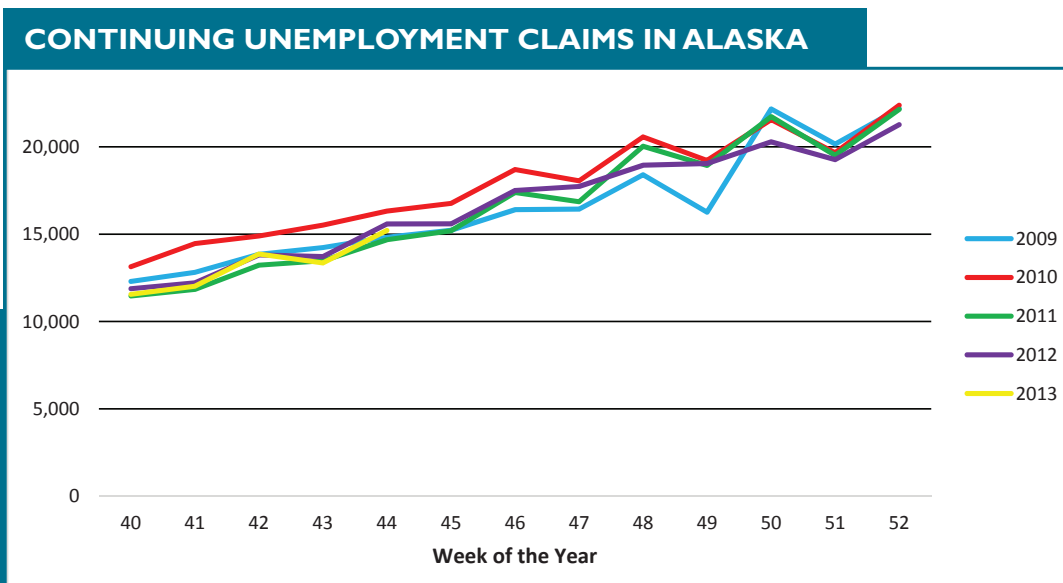
↑ **2.35%**  
Increase of Professional & Business Services Jobs  
YTD

# UNEMPLOYMENT CLAIMS

Initial unemployment claim applications can be interpreted as a proxy for layoffs. They tend to fall as job growth accelerates. The totals for the last two weeks of October were more than 1,000 claims lower than 2012, and have leveled off. Initial claims are expected to stay near the 2,000 mark for the duration of 2013.



Continuing claims figures helps to show how well unemployed workers are re-entering the workforce. This total does not include workers receiving extended benefits from the federal government. September and October levels have rose to trend similarly to 2011 and 2012. This trend is likely to continue through the end of the year, but low initial claims totals may indicate future low readings for continuing claims.



All data referenced in this employment report is from the State of Alaska, Dept. of Labor & Workforce Development website: [www.laborstats.alaska.gov](http://www.laborstats.alaska.gov)

**Report compiled by Anchorage Economic Development Corp. Research Department.**

If you are interested in learning more about this data or are interested in how AEDC can help you develop a report, call AEDC at 907.258.3700.

AEDC, 510 L Street, Suite 603, Anchorage, AK 99501



**First National Bank**  
ALASKA

# UNEMPLOYMENT ANALYSIS (YTD, 2013)

## Anchorage, Mat-Su, Kenai Peninsula Borough

	Jan	Feb	Mar	Apr	May	Jun	Jul	Aug	Sep	Oct	Nov	Dec	13 YTD Avg	12 YTD Avg	13 vs 12
	revised	revised	revised	revised	revised	revised	revised	revised	revised	preliminary					
<b>Municipality of Anchorage</b>															
Labor Force	157,275	156,926	155,566	155,408	154,851	156,405	155,259	153,231	154,611	156,905			155,644	156,584	(941)
Employment	148,567	148,914	147,987	147,673	147,596	148,134	147,659	145,989	147,734	149,526			147,978	147,894	84
Unemployment	8,708	8,012	7,579	7,467	7,255	8,271	7,600	7,242	6,877	7,379			7,639	8,690	(1,051)
Unemployment Rate	5.5%	5.1%	4.9%	4.8%	4.7%	5.3%	4.9%	4.7%	4.4%	4.7%			4.9%	5.5%	-0.6%
<b>Mat-Su Borough</b>															
Labor Force	44,213	44,004	43,489	43,078	42,772	43,262	42,887	42,127	42,582	43,342			43,176	43,658	(482)
Employment	40,288	40,382	40,130	40,045	40,024	40,170	40,041	39,588	40,061	40,548			40,128	40,105	23
Unemployment	3,925	3,622	3,359	3,033	2,748	3,092	2,846	2,539	2,521	2,794			3,048	3,553	(505)
Unemployment Rate	8.9%	8.2%	7.7%	7.0%	6.4%	7.1%	6.6%	6.0%	5.9%	6.4%			7.1%	8.1%	-1.1%
<b>Kenai Peninsula Borough</b>															
Labor Force	26,413	26,491	26,735	26,919	27,912	29,309	29,729	29,072	27,561	27,054			27,720	27,768	(49)
Employment	23,879	24,123	24,546	24,928	26,072	27,284	27,911	27,322	25,808	25,112			25,699	25,430	268
Unemployment	2,534	2,368	2,189	1,991	1,840	2,025	1,818	1,750	1,753	1,942			2,021	2,338	(317)
Unemployment Rate	9.6%	8.9%	8.2%	7.4%	6.6%	6.9%	6.1%	6.0%	6.4%	7.2%			7.3%	8.4%	-1.1%
<b>Southcentral Region</b>															
Labor Force	227,901	227,421	225,790	225,405	225,535	228,976	227,875	224,430	224,754	227,301			226,539	228,010	(1,471)
Employment	212,734	213,419	212,663	212,646	213,692	215,588	215,611	212,899	213,603	215,186			213,804	213,429	375
Unemployment	15,167	14,002	13,127	12,491	11,843	13,388	12,264	11,531	11,151	12,115			12,708	14,581	(1,873)
Unemployment Rate	6.7%	6.2%	5.8%	5.5%	5.3%	5.8%	5.4%	5.1%	5.0%	5.3%			5.6%	6.4%	-0.8%
<b>State of Alaska</b>															
Labor Force	361,085	362,187	360,100	359,422	363,918	371,481	373,528	369,119	366,054	363,773			365,067	366,950	(1,883)
Employment	333,414	336,610	336,463	336,984	342,375	347,274	351,573	348,433	345,942	341,683			342,075	341,125	951
Unemployment	27,671	25,577	23,637	22,438	21,543	24,207	21,955	20,686	20,112	22,090			22,992	25,825	(2,834)
Unemployment Rate	7.7%	7.1%	6.6%	6.2%	5.9%	6.5%	5.9%	5.6%	5.5%	6.1%			6.3%	7.0%	-0.7%

**\*Note:** These numbers reflect employment, unemployment, etc. for only those people that are residence of the specified City/Region, thus are not inclusive of people who commute to another city for their jobs. (Ex: Someone lives in Wasilla but works in Anchorage. They would be counted in the Mat-Su Borough's labor force and employment numbers, not the Municipality of Anchorage numbers)



# INDUSTRY EMPLOYMENT ESTIMATES 2013

## Municipality of Anchorage

Industry	Jan	Feb	Mar	Apr	May	Jun	Jul	Aug	Sep	Oct	Nov	Dec	2013 YTD Avg.	2012 YTD Avg.	2013 vs 2012 YTD Change	% Change
	revised	revised	revised	revised	revised	revised	revised	revised	revised	preliminary						
Total Nonfarm	153,000	154,300	154,900	156,500	159,000	162,300	159,800	162,700	161,100	158,700			158,230	157,230	1,000	0.64%
Goods Producing	13,300	13,400	13,300	13,700	15,000	15,900	16,500	17,000	15,900	15,500			14,950	14,240	710	4.99%
Services Providing	139,600	141,000	141,600	142,800	143,900	146,400	143,300	145,800	145,100	143,200			143,270	143,000	270	0.19%
Mining and Logging <sup>2</sup>	3,600	3,700	3,700	3,700	3,700	3,800	3,800	3,800	3,800	3,800			3,740	3,400	340	10.00%
Oil & Gas	3,500	3,500	3,500	3,500	3,500	3,600	3,600	3,700	3,600	3,600			3,560	3,230	330	10.22%
Construction	7,500	7,500	7,400	7,800	8,900	9,500	9,900	10,300	9,700	9,300			8,780	8,580	200	2.33%
Manufacturing	2,200	2,200	2,200	2,300	2,400	2,500	2,800	2,800	2,500	2,400			2,430	2,260	170	7.52%
Trade/Transportation/Utilities	32,000	31,900	31,900	32,300	33,200	33,800	34,000	33,700	33,300	32,900			32,900	33,000	-100	-0.30%
Wholesale Trade	4,300	4,300	4,400	4,400	4,600	4,700	4,800	4,800	4,700	4,600			4,560	4,570	-10	-0.22%
Retail Trade	16,900	16,700	16,600	16,800	17,100	17,300	17,200	17,200	17,100	17,200			17,010	17,030	-20	-0.12%
Trans/Warehouse/Utilities	10,800	10,900	10,900	11,100	11,600	11,800	11,900	11,700	11,500	11,100			11,330	11,390	-60	-0.53%
Air Transportation	2,900	2,900	2,900	2,900	3,000	3,100	3,100	3,100	3,000	2,900			2,980	2,960	20	0.68%
Information	3,800	3,800	3,800	3,800	3,800	3,800	3,700	3,800	3,800	3,800			3,790	3,910	-120	-3.07%
Financial Activities	7,900	8,000	8,000	8,100	8,200	8,500	8,600	8,200	7,900	7,800			8,120	8,190	-70	-0.85%
Professional & Business Svcs	19,500	19,700	19,600	19,900	20,200	21,100	21,200	21,200	21,200	20,800			20,440	19,970	470	2.35%
Educational & Health Services	24,900	25,100	25,300	25,500	25,600	25,900	25,300	25,200	25,200	25,200			25,280	24,590	690	2.81%
Health Care	18,200	18,300	18,400	18,400	18,400	18,500	18,500	18,400	18,300	18,400			18,380	17,970	410	2.28%
Leisure & Hospitality	16,100	16,400	16,800	16,900	17,400	18,000	18,100	18,100	17,500	16,700			17,200	16,940	260	1.53%
Accommodation	3,100	3,200	3,200	3,200	3,100	3,200	3,600	3,600	3,500	3,200			3,290	3,200	90	2.81%
Food Svcs & Drinking Places	10,800	11,000	11,200	11,500	11,800	12,200	12,000	12,000	11,600	11,200			11,530	11,390	140	1.23%
Other Services	5,600	5,600	5,700	5,600	5,700	5,800	6,000	6,100	6,100	6,100			5,830	5,790	40	0.69%
Government	29,800	30,600	30,500	30,800	29,900	30,000	26,300	29,500	30,100	29,900			29,740	30,580	-840	-2.75%
Federal Government	8,900	8,800	8,800	8,700	8,700	8,700	8,700	8,600	8,600	8,400			8,690	9,150	-460	-5.03%
State Government	10,200	11,000	11,000	11,100	10,400	10,400	10,400	10,500	11,100	11,000			10,710	10,650	60	0.56%
State Education	2,100	3,000	2,900	3,000	2,300	2,100	2,000	2,200	2,900	2,900			2,540	2,500	40	1.60%
Local Government	10,800	10,800	10,700	11,000	10,800	10,900	7,200	10,400	10,400	10,500			10,350	10,790	-440	-4.08%
Local Education	8,000	8,000	7,900	8,100	8,000	7,900	4,400	7,600	7,500	7,600			7,500	7,930	-430	-5.42%

- Nonfarm Wage & Salary excludes self-employed workers, fishers, domestics, and unpaid family workers.

- All totals are seasonally non-adjusted totals.

- Government includes employees of public school systems and the University of Alaska.

- Beginning January 2001, wage and salary employment estimates were published under a new classification system. The Standard Industrial Classification system (SIC) has been replaced by the North American Industry Classification System (NAICS). Data prior to 2001 are comparable only at the Total Nonfarm and Government levels.

<sup>1/</sup> As of January 2001, certain federally-recognized tribal entities were moved to Local Government, which created a series break for Total Government and Local Government. [Please see the April 2002 Alaska Economic Trends publication for a detailed explanation.](#)

<sup>2/</sup> This category was called "Natural Resources and Mining" in previous years. The change is in name only; the industries it includes remain the same.

- Some totals may not equal components due to rounding.

- Source: Alaska Department of Labor and Workforce Development, Research and Analysis Section

\* **Note:** The above numbers are representative of all people employed in the Municipality of Anchorage, this is inclusive of workers who claim residence outside of the Municipality of Anchorage. (Ex: someone who lives in the Mat-Su, but works in Anchorage would be included in these number)

### Quick Comparisons

13 vs 12 Oct	600	0.38%
13 vs 12 1st Qtr	1,567	1.03%
13 vs 12 2nd Qtr	1,233	0.79%
13 vs 12 3rd Qtr.	333	0.21%
13 vs 12 4th Qtr.	600	0.38%

# INDUSTRY EMPLOYMENT ESTIMATES 2013

## State of Alaska

Industry	Jan	Feb	Mar	Apr	May	Jun	Jul	Aug	Sep	Oct	Nov	Dec	2013 YTD Avg.	2012 YTD Avg.	2013 vs 2012 YTD Change	% Change
	revised	revised	revised	revised	revised	revised	revised	revised	revised	preliminary						
Total Nonfarm	314,200	321,400	323,800	326,500	333,700	352,800	356,800	355,700	345,600	329,300			335,980	336,670	-690	-0.20%
Goods Producing	40,100	42,900	43,500	43,900	44,000	53,700	58,600	58,700	51,100	45,500			48,200	48,690	-490	-1.01%
Services Providing	274,100	278,500	280,300	282,600	289,700	299,100	296,500	297,000	294,500	283,800			287,610	287,980	-370	-0.13%
Mining and Logging <sup>2</sup>	16,600	17,100	17,300	17,500	17,800	18,400	18,700	18,900	18,700	18,500			17,950	16,990	960	5.65%
Mining	16,400	16,800	16,900	17,000	17,300	17,800	18,000	18,200	18,100	17,800			17,430	16,680	750	4.50%
Oil & Gas	13,600	13,900	14,000	14,100	14,300	14,500	14,700	14,800	14,800	14,700			14,340	13,560	780	5.75%
Construction	14,300	14,900	15,100	15,700	17,100	19,900	20,700	21,600	20,100	19,500			17,890	16,780	1,110	6.62%
Manufacturing	9,200	10,900	11,100	10,700	9,100	15,400	20,900	18,200	12,300	7,500			12,530	14,920	-2,390	-16.02%
Seafood Processing	5,600	7,300	7,400	6,700	5,000	11,200	16,700	14,100	8,200	3,600			8,580	11,260	-2,680	-23.80%
Trade/Transportation/Utilities	61,000	60,400	61,000	62,400	66,100	68,700	69,500	69,200	66,600	63,500			64,840	64,070	770	1.20%
Wholesale Trade	5,900	5,800	5,900	5,900	5,900	6,100	6,300	6,200	6,000	5,700			5,970	6,230	-260	-4.17%
Retail Trade	34,800	34,100	34,400	35,200	36,900	38,100	38,200	37,900	36,800	35,900			36,230	35,820	410	1.14%
Food & Beverage Stores	6,100	6,100	6,000	6,000	6,100	6,200	6,400	6,400	6,300	6,300			6,190	6,240	-50	-0.80%
General Merchandise Stores	9,800	9,500	9,700	9,800	10,100	10,400	10,300	10,300	9,900	10,000			9,980	9,890	90	0.91%
Trans/Warehouse/Utilities	20,300	20,500	20,700	21,300	23,300	24,500	25,000	25,100	23,800	21,900			22,640	22,020	620	2.82%
Air Transportation	5,500	5,400	5,500	5,600	5,900	6,800	6,400	6,500	6,100	5,700			5,940	5,900	40	0.68%
Information	6,000	6,100	6,100	6,000	6,100	6,200	6,100	6,100	6,100	6,100			6,090	6,220	-130	-2.09%
Telecommunications	3,900	3,900	3,900	3,900	4,000	4,100	4,000	4,000	4,000	3,900			3,960	4,160	-200	-4.81%
Financial Activities	12,900	13,000	13,100	13,100	13,400	13,900	14,300	14,200	13,600	13,500			13,500	13,380	120	0.90%
Professional & Business Svcs	27,000	27,900	27,200	27,900	28,700	29,500	29,500	29,400	29,200	27,800			28,410	28,800	-390	-1.35%
Educational & Health Services	47,000	47,400	47,700	47,700	47,400	47,600	47,000	46,700	47,000	47,400			47,290	46,200	1,090	2.36%
Health Care	33,400	33,500	33,800	33,500	33,800	34,200	34,100	33,700	33,600	33,800			33,740	32,810	930	2.83%
Leisure & Hospitality	27,800	28,400	29,400	29,500	33,300	38,600	40,300	40,400	36,100	30,000			33,380	33,820	-440	-1.30%
Accommodation	6,500	6,500	6,600	6,700	7,700	10,600	11,300	11,600	9,500	6,700			8,370	8,390	-20	-0.24%
Food Svcs & Drinking Places	17,600	18,100	18,700	18,800	20,900	22,400	23,100	23,000	21,500	19,400			20,350	20,490	-140	-0.68%
Other Services	11,200	11,200	11,400	11,400	11,600	11,700	12,200	12,200	11,900	11,700			11,650	11,630	20	0.17%
Government	81,200	84,100	84,400	84,600	83,100	82,900	77,600	78,800	84,000	86,800			82,750	83,860	-1,110	-1.32%
Federal Government	14,800	14,700	14,900	14,900	15,200	15,600	15,400	15,200	15,100	14,100			14,990	16,450	-1,460	-8.88%
State Government	24,500	26,700	26,800	26,900	25,700	25,200	25,100	25,500	26,700	26,400			25,950	26,010	-60	-0.23%
State Education	6,600	8,800	8,700	8,700	7,500	6,400	6,000	6,700	8,400	8,600			7,640	7,620	20	0.26%
Local Government	41,900	42,700	42,700	42,800	42,000	42,100	37,100	38,100	42,200	43,300			41,490	41,400	90	0.22%
Local Education	23,600	24,300	24,100	24,100	23,400	22,300	17,500	18,700	23,000	24,000			22,500	23,110	-610	-2.64%
Tribal Government <sup>1</sup>	3,400	3,400	3,500	3,400	3,400	3,700	3,700	3,500	3,400	3,300			3,470	3,740	-270	-7.22%

- Nonfarm Wage & Salary excludes self-employed workers, fishers, domestics, and unpaid family workers.

- All totals are non-seasonally adjusted totals.

- Government includes employees of public school systems and the University of Alaska.

- Beginning January 2001, wage and salary employment estimates were published under a new classification system. The Standard Industrial Classification system (SIC) has been replaced by the North American Industry Classification System (NAICS). Data prior to 2001 are comparable only at the Total Nonfarm and Government levels.

<sup>1/</sup> As of January 2001, certain federally-recognized tribal entities were moved to Local Government, which created a series break for Total Government and Local Government. [Please see the April 2002 Alaska Economic Trends publication for a detailed explanation.](#)

<sup>2/</sup> This category was called "Natural Resources and Mining" in previous years. The change is in name only; the industries it includes remain the same.

- Totals may not equal sub-sections due to rounding.

- Source: Alaska Department of Labor and Workforce Development, Research and Analysis Section

### Quick Comparisons

13 vs 12 Oct	-2,500	-0.75%
13 vs 12 1st Qtr	1,900	0.60%
13 vs 12 2nd Qtr	-1,400	-0.41%
13 vs 12 3rd Qtr	-1,967	-0.55%
13 vs 12 4th Qtr	-2,500	-0.75%

**Dianne Blumer**  
Commissioner  
P.O. Box 111149  
Juneau, AK 99811-1149  
www.labor.alaska.gov



**Beth Leschper**  
Communications Director  
907.465.2700  
cell: 907.723.1321  
beth.leschper@alaska.gov

## Press Release

COMMISSIONER'S OFFICE

November 22, 2013

No. 13-50

### Unemployment rate at 6.5 percent in October

Alaska's seasonally adjusted unemployment rate was 6.5 percent in October, unchanged from September. The comparable national rate was 7.3 percent.

Alaska's rate has been below the national rate for five full years, but the gap between the U.S. rate and Alaska's has been slowly shrinking since 2010.

October's not-seasonally adjusted rate increased six-tenths of a percentage point to 6.1 percent from September's 5.5 percent. This bump put October's rate at the level it was a year ago, the first time in 2013 that an unadjusted monthly rate was not below its 2012 level.

As is typical for this time of year, the unadjusted rate increased in 25 out of 29 boroughs and census areas. The largest increase was in the Municipality of Skagway, where the rate climbed from 2.7 to 15.6 percent. The Denali Borough's rate, which is similarly driven by seasonal tourism, increased by 6.5 percentage points over the month.

The City and Borough of Juneau had the lowest rate in October at 4.3 percent. The highest rate was in the Wade Hampton Census Area at 19.7 percent.

**Contact: Caroline Schultz, Economist (907) 465-6027**  
Research and Analysis Web site: <http://laborstats.alaska.gov>



Unemployment Rates, Seasonally Adjusted			
	10/13	9/13	10/12
Alaska	6.5%	6.5%	6.8%
U.S.	7.3%	7.2%	7.9%

Sources for graph and table: Alaska Department of Labor and Workforce Development, Research and Analysis Section; and U.S. Bureau of Labor Statistics

For detailed employment estimates, see <http://live.laborstats.alaska.gov/ces/>. The estimates are preliminary and subject to potentially large revisions.

# Labor Force by Borough and Census Area, Not Seasonally Adjusted<sup>1</sup>

	Civilian Labor Force			Unemployed					
	10/13 <sup>P</sup>	9/13	10/12	Number			Rate		
				10/13 <sup>P</sup>	9/13	10/12	10/13 <sup>P</sup>	9/13	10/12
<b>Alaska Statewide</b>	<b>363,773</b>	<b>366,054</b>	<b>364,633</b>	<b>22,090</b>	<b>20,112</b>	<b>22,064</b>	<b>6.1</b>	<b>5.5</b>	<b>6.1</b>
<b>Anchorage/Mat-Su Region</b>	<b>200,247</b>	<b>197,193</b>	<b>201,651</b>	<b>10,173</b>	<b>9,398</b>	<b>10,224</b>	<b>5.1</b>	<b>4.8</b>	<b>5.1</b>
Anchorage, Municipality of	156,905	154,611	158,025	7,379	6,877	7,434	4.7	4.4	4.7
Matanuska-Susitna Borough	43,342	42,582	43,626	2,794	2,521	2,790	6.4	5.9	6.4
<b>Gulf Coast Region</b>	<b>38,630</b>	<b>40,197</b>	<b>38,247</b>	<b>2,740</b>	<b>2,396</b>	<b>2,797</b>	<b>7.1</b>	<b>6.0</b>	<b>7.3</b>
Kenai Peninsula Borough	27,054	27,561	26,591	1,942	1,753	1,971	7.2	6.4	7.4
Kodiak Island Borough	6,763	7,038	6,899	325	283	370	4.8	4.0	5.4
Valdez-Cordova Census Area	4,813	5,598	4,757	473	360	456	9.8	6.4	9.6
<b>Interior Region</b>	<b>54,800</b>	<b>55,868</b>	<b>54,716</b>	<b>3,282</b>	<b>2,950</b>	<b>3,281</b>	<b>6.0</b>	<b>5.3</b>	<b>6.0</b>
Denali Borough	1,307	2,090	837	134	80	131	10.3	3.8	15.7
Fairbanks North Star Borough	46,734	46,958	47,211	2,379	2,169	2,424	5.1	4.6	5.1
Southeast Fairbanks Census Area	3,419	3,447	3,486	343	301	330	10.0	8.7	9.5
Yukon-Koyukuk Census Area	3,340	3,373	3,182	426	400	396	12.8	11.9	12.4
<b>Northern Region</b>	<b>13,427</b>	<b>12,953</b>	<b>12,888</b>	<b>1,179</b>	<b>1,156</b>	<b>1,110</b>	<b>8.8</b>	<b>8.9</b>	<b>8.6</b>
Nome Census Area	4,535	4,314	4,267	443	437	436	9.8	10.1	10.2
North Slope Borough	5,598	5,439	5,530	269	256	272	4.8	4.7	4.9
Northwest Arctic Borough	3,294	3,200	3,091	467	463	402	14.2	14.5	13.0
<b>Southeast Region</b>	<b>38,625</b>	<b>41,279</b>	<b>38,856</b>	<b>2,306</b>	<b>1,951</b>	<b>2,309</b>	<b>6.0</b>	<b>4.7</b>	<b>5.9</b>
Haines Borough	1,160	1,528	1,281	92	79	88	7.9	5.2	6.9
Hoonah-Angoon Census Area	991	1,389	929	124	127	109	12.5	9.1	11.7
Juneau, City and Borough of	18,104	18,513	18,147	784	703	803	4.3	3.8	4.4
Ketchikan Gateway Borough	7,997	8,627	7,912	464	372	472	5.8	4.3	6.0
Petersburg Census Area	1,628	1,751	1,698	142	118	151	8.7	6.7	8.9
Prince of Wales-Hyder Census Area	2,382	2,578	2,461	266	253	258	11.2	9.8	10.5
Sitka, City and Borough of	4,372	4,632	4,387	217	192	206	5.0	4.1	4.7
Skagway, Municipality of	647	817	630	101	22	113	15.6	2.7	17.9
Wrangell, City and Borough of	1,057	1,123	1,086	97	68	86	9.2	6.1	7.9
Yakutat, City and Borough of	287	321	325	19	17	23	6.6	5.3	7.1
<b>Southwest Region</b>	<b>18,043</b>	<b>18,566</b>	<b>18,278</b>	<b>2,411</b>	<b>2,262</b>	<b>2,345</b>	<b>13.4</b>	<b>12.2</b>	<b>12.8</b>
Aleutians East Borough	1,086	1,029	1,156	132	131	133	12.2	12.7	11.5
Aleutians West Census Area	3,050	3,045	3,365	351	231	359	11.5	7.6	10.7
Bethel Census Area	7,553	7,159	7,395	1,067	1,079	1,021	14.1	15.1	13.8
Bristol Bay Borough	556	1,048	563	38	32	35	6.8	3.1	6.2
Dillingham Census Area	1,849	1,996	1,830	186	173	183	10.1	8.7	10.0
Lake and Peninsula Borough	1,106	1,284	1,175	76	67	64	6.9	5.2	5.4
Wade Hampton Census Area	2,843	3,005	2,794	561	549	550	19.7	18.3	19.7

P = Preliminary. As more information becomes available, data are revised every month for the previous month and again at the end of every calendar year.

Note: The official definition of unemployment excludes anyone who has not made an active attempt to find work in the four-week period up to and including the week that includes the 12th of the reference month. Many in rural Alaska do not meet the definition because they have not conducted an active job search due to the scarcity of employment opportunities.

<sup>1</sup>Unemployment rates that are not seasonally adjusted should not be compared with those that are.

Source: Alaska Department of Labor and Workforce Development, Research and Analysis Section; and U.S. Bureau of Labor Statistics

