



AEDC
Anchorage Economic
Development Corporation

April 2014 Employment Report Anchorage

Sponsored by:



First National Bank
ALASKA
MEMBER FDIC

5%

April Unemployment
Rate for Anchorage

MONTHLY UNEMPLOYMENT

The unemployment rate for Anchorage in April was 5 percent and is down 0.4 percent from March. This is well below the national rate of 5.9 percent and the statewide rate of 6.5 percent. The trend each year is for the Anchorage unemployment rate to decrease in April, stay relatively flat through May, and then spike in June due to education workers entering the summer break period. The spring pattern this year closely resembles last year's trend; **it is anticipated that the rate will once again be at or below 5 percent for much of the second half of the year.** *As always, it should be noted that these are preliminary survey figures for April and will be revised next month.*

YEAR-TO-DATE UNEMPLOYMENT

The average year-to-date (YTD) non-seasonally adjusted unemployment rate in Anchorage was 5.3 percent at the end of April, which is the same level as the 2013 YTD average. **An increase of 214 in the employment total, combined with an increase of 285 in the Anchorage labor force during the YTD period, has resulted in an additional 72 people in the reported unemployment total.** The total number of unemployed people in Anchorage for the month of April is estimated at 7,765 (those actively looking for jobs), 32 more than April 2013. In the Mat-Su Borough, the YTD average monthly unemployment rate is virtually unchanged from 2013 YTD, and in the Kenai Peninsula Borough, the rate is down 0.2 percent over the same period (see the charts at the end of this report for more details).

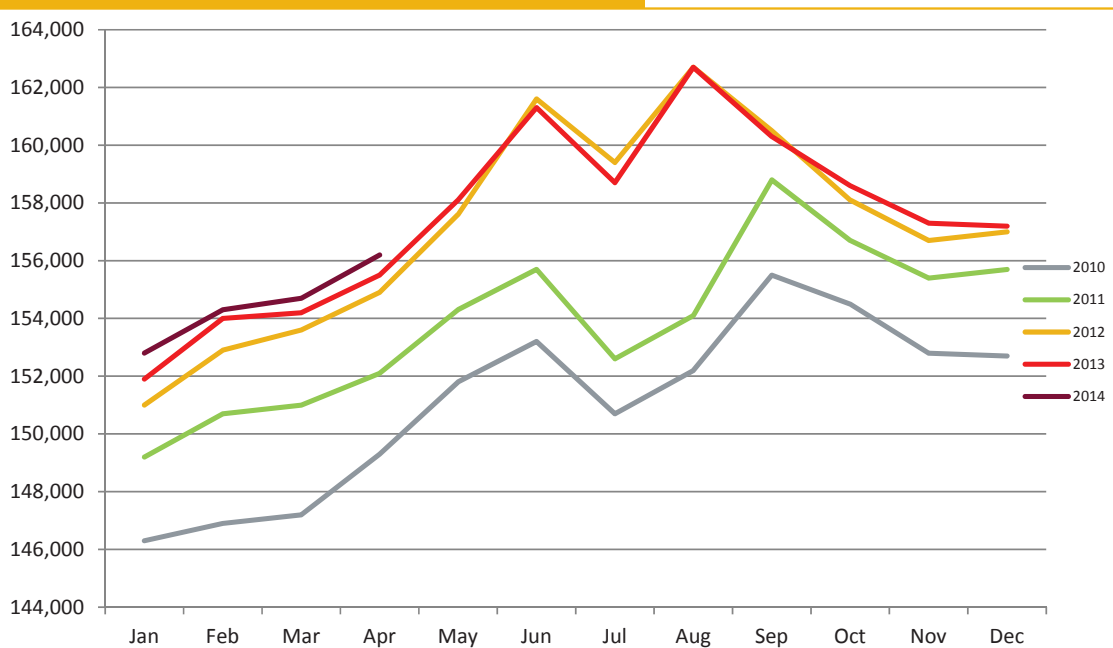
It is important to note that these unemployment numbers represent the labor force residing in Anchorage, and do not include jobs in Anchorage held by residents from outside the municipality. The industry employment estimates referenced in the remainder of this report are representative of all jobs in the Municipality of Anchorage, regardless of the job holder's place of residency.

ANCHORAGE INDUSTRY EMPLOYMENT ESTIMATES

The YTD average is continuing to show improvement over 2013 with a total net increase of 600 jobs so far. The private sector (total jobs minus government jobs) has grown by 1,100 jobs during this time, equaling a growth rate of 0.9 percent. Government employment has declined by 500 jobs so far, with losses split between federal employment and local education.

In the goods producing category, the Mining & Logging industry (which includes Oil & Gas employment) is showing the largest YTD growth, while service providing industries such as Information, Educational & Health Services and Leisure & Hospitality are also showing strong growth. All of the ten major industries' April 2014 averages, excluding Government, are at or above April 2013 totals, indicating sustained growth in many fields.

ANCHORAGE EMPLOYMENT
Municipality of Anchorage 2010-Present



EXECUTIVE SUMMARY CONT.

MONTHLY REVISIONS

Each month, the Alaska Department of Labor's Research and Analysis Division revises the previous month employment numbers based on the availability of newer or late arriving data. The following tables show the changes in Anchorage's and Alaska's March job totals by industry.

Most adjustments are relatively minor, however, some changes do occur which are significant. Changes such as these are normally the result of rounding errors, job classification modifications, sample size or modeling issues, or errors within the industry.

MARCH 2014 REVISIONS, ANCHORAGE			
<i>Industry</i>	<i>Preliminary Total</i>	<i>Revised Total</i>	<i>Net Change</i>
Goods Producing	12,900	12,800	-100
Services Providing	141,800	141,900	+100
Mining & Logging	3,700	3,600	-100
Oil & Gas	3,600	3,500	-100
Trade/Transportation/Utilities	32,200	32,300	+100
Professional & Business Services	20,600	20,500	-100
Leisure & Hospitality	16,700	16,800	+100
MARCH 2014 REVISIONS, ALASKA			
<i>Industry</i>	<i>Preliminary Total</i>	<i>Revised Total</i>	<i>Net Change</i>
Total Nonfarm	324,800	325,500	+700
Goods Producing	45,700	46,100	+400
Services Providing	279,100	279,400	+300
Construction	14,100	14,400	+300
Manufacturing	14,100	14,200	+100
Trade, Transportation, Utilities	61,100	61,300	+200
Retail Trade	35,000	35,200	+200
Food & Beverage Stores	6,300	6,400	+100
Telecommunications	4,000	4,100	+100
Educational & Health Services	47,500	47,600	+100
Leisure & Hospitality	29,700	29,900	+200
Food Svcs & Drinking Places	19,300	19,500	+200
Government	83,100	82,900	-200
Local Government	41,700	41,500	-200

GOODS PRODUCING JOBS

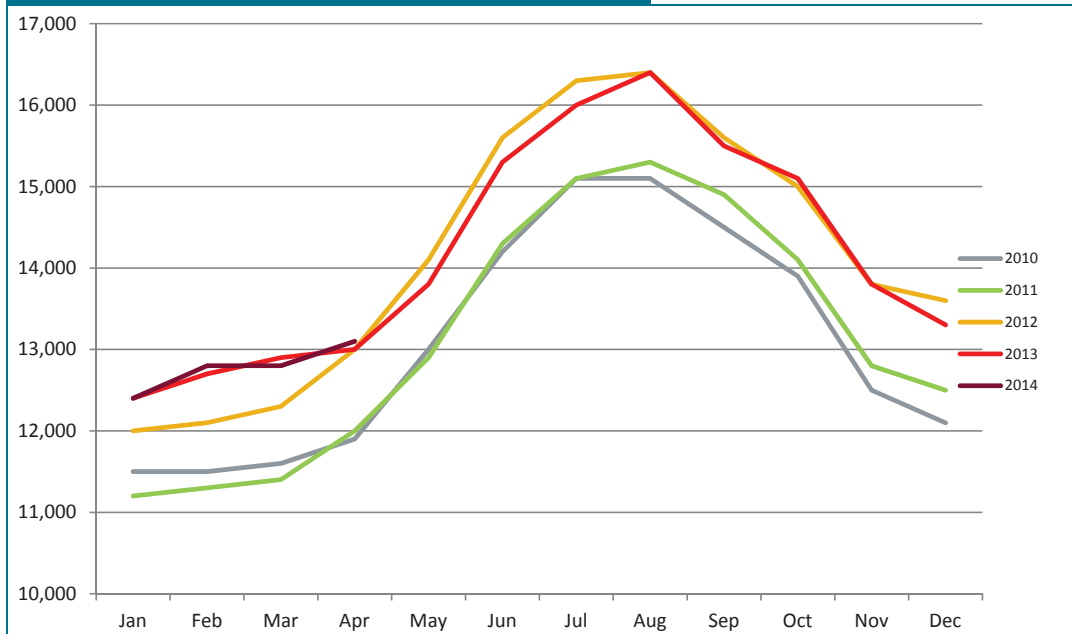
CONSTRUCTION WORK, MINING, OIL & GAS PRODUCTION, MANUFACTURING

Growth in the number of goods producing jobs (those jobs that are specifically tied to production, not those which support the production or maintenance of the production jobs) has been steadily increasing each month and is now showing positive gains of 25 jobs YTD. A sizable increase of 150 jobs in the mining & logging industry (which includes oil & gas employment) is the largest contributing factor, while construction employment has remained essentially flat (-25 jobs YTD).

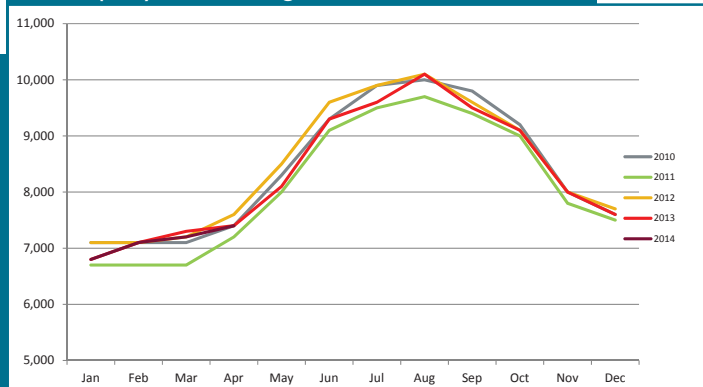
The oil & gas sector has gained 100 jobs when compared to the same period in 2013, a change of 2.96 percent. With construction at the Point Thomson field advancing, the development of the CD-5 production site adjacent to the Alpine field on the North Slope, and a continuous increase in Hilcorp Energy's activities in Cook Inlet, oil & gas employment is expected to stay strong in the near term.

The construction industry, as noted earlier, is mostly unchanged from the 2013 YTD total. Historically, the first four months of the year see slow increases in construction job numbers, with the total growing rapidly during the summer construction season. This year is no exception, and monthly employment estimates are nearly identical to 2013. Last year ended with monthly construction jobs averaging 8,325, and there is no indication that there will be fewer this year. YTD municipal building permit counts and values are still higher than last year's, indicating continued strong interest in new construction projects.

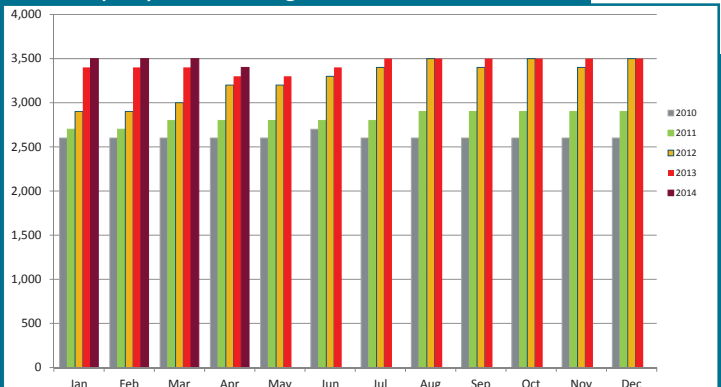
GOODS PRODUCING JOBS Municipality of Anchorage 2010-Present



CONSTRUCTION EMPLOYMENT Municipality of Anchorage 2010-Present



OIL & GAS EMPLOYMENT Municipality of Anchorage 2010-Present



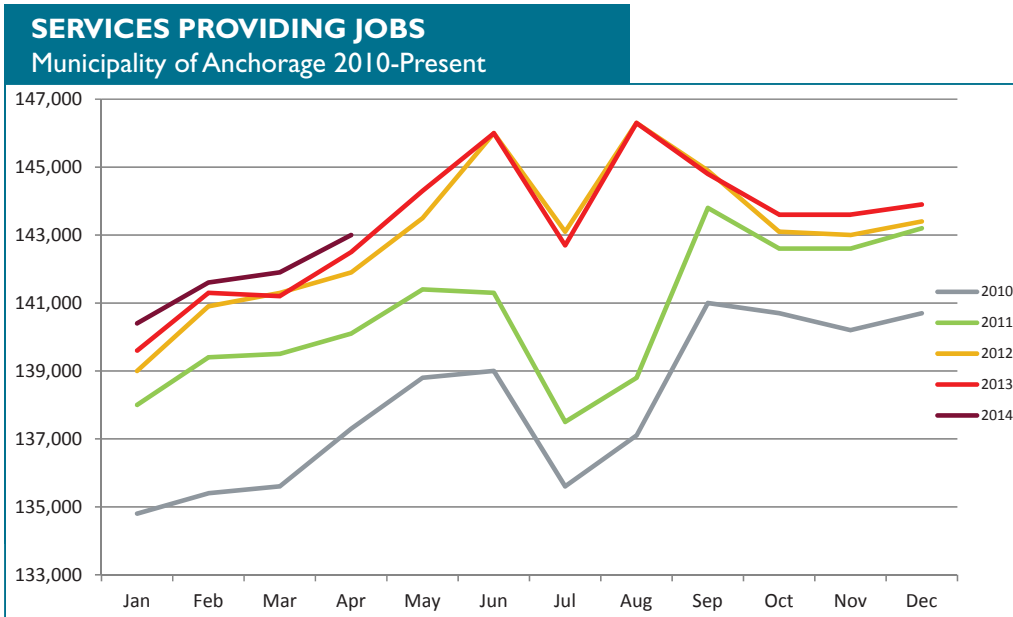
SERVICES PROVIDING JOBS

ENGINEERING, RETAIL, TOURISM, HEALTH CARE, ETC.

Services producing jobs in Anchorage totaled 143,000 for April. Overall, the YTD average is up 575 jobs from 2013 YTD. The information industry growth rate is 4.7 percent so far this year, making it by far the highest growth sector in the service sector. **Improvement the information industry is a noteworthy event, as this segment has been losing jobs annually since 2011.**

Another significant development is the robust growth in retail trade jobs, which are up 400 YTD compared to 2013 YTD. **Since 2003, yearly growth in this sector has never exceeded 100 jobs.** New major retailers in the Anchorage area have contributed to this substantial growth and it is likely to continue as a number of stores are slated to open in Anchorage this summer. The professional and business services industry is also seeing significant growth, with the YTD job growth rate at 0.99 percent.

Federal and local government sectors are both averaging less than this point last year (-325 and -350, respectively), but the state government jobs average is up 175 jobs YTD from 2013 due to a 7.27 percent YTD growth in state education positions.



SERVICES PROVIDING JOBS

Increase of Services Providing Jobs
+575
 2013 vs. 2014 YTD Change

141,725
 Services Providing Jobs in Anchorage (YTD avg.)

APRIL 13 vs. APRIL 14
 YEAR TO DATE CHANGE

Retail

+400

Professional & Business Services

+200

Information

+175

Educational & Health Services

+150

Leisure & Hospitality

+175

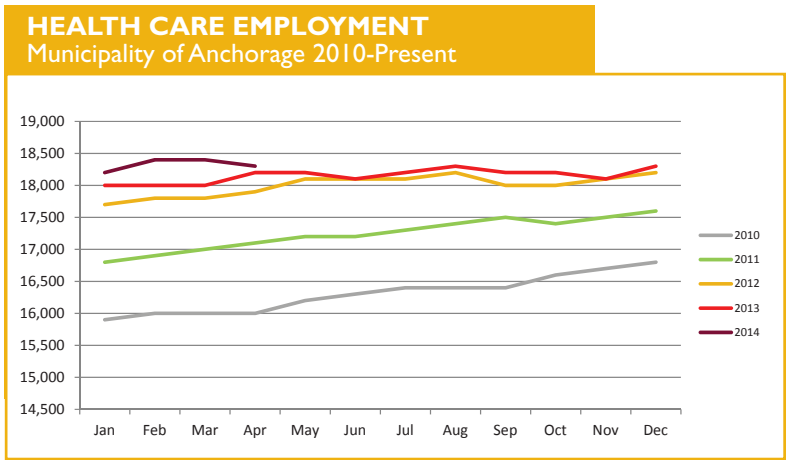
Government

-500

••••• SERVICES PROVIDING JOBS SUMMARY

HEALTH CARE EMPLOYMENT

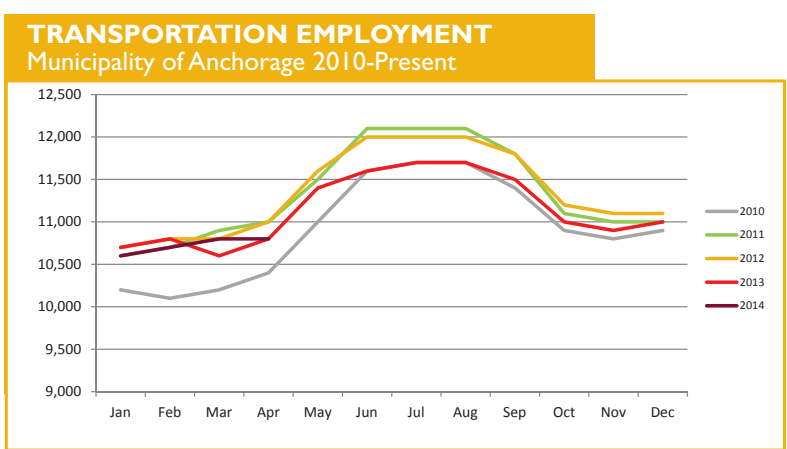
Employment in the health care sector is still doing well, with 275 more jobs over 2013 YTD. The 1.52 percent YTD job growth in the local health care sector is nearly twice the 2013 end of year rate, and is still one of the fastest growing service producing industries. This strong growth in the first quarter is a very positive indicator for the remainder of the year, and we are confident that this sector will meet the AEDC January projection of 250 additional health care jobs by the end of the year.



TRANSPORTATION

TRANSPORTATION

The April estimate of 10,800 jobs is the same as April 2013, and the YTD average is at the same level as 2013 as well. Employment in this sector has been flat or contracting for four of the last five years and no significant change is expected this year. Improvement in the national retail economy may bolster the number of cargo planes passing through Ted Stevens International Airport, which may in turn stimulate hiring. A positive start for the state's summer tourist season is also giving some hope for stability or even improvement in transportation job numbers.

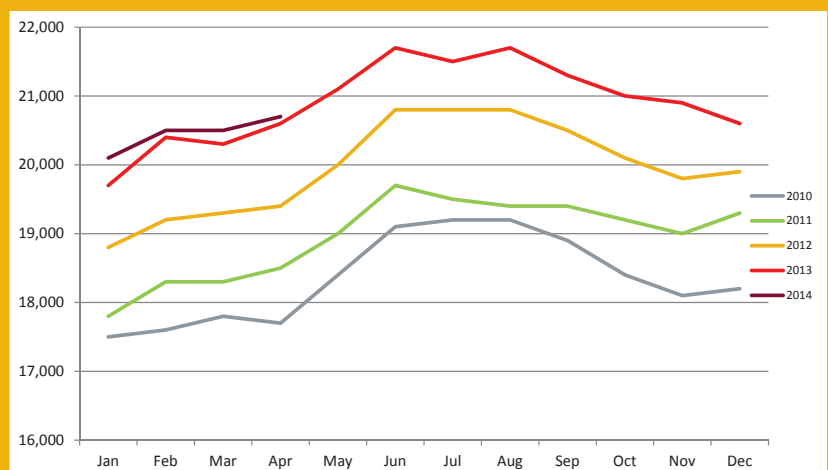


PROFESSIONAL & BUSINESS SERVICES

ENGINEERING, ARCHITECTURE, LEGAL SERVICES, ACCOUNTING, SCIENTIFIC RESEARCH, WASTE MANAGEMENT & ADMINISTRATIVE SERVICES

The YTD average for this industry continues to improve and is up 200 jobs from 2013. The rate of increase in jobs is one of the largest of all service providing industries at 0.99 percent. Job growth within professional and business services is often tied to growth in other industries such as oil & gas, construction and transportation. The YTD trends in these other industries have been either for slow growth or flat, so it remains to be seen if this industry's growth will be maintained through the year.

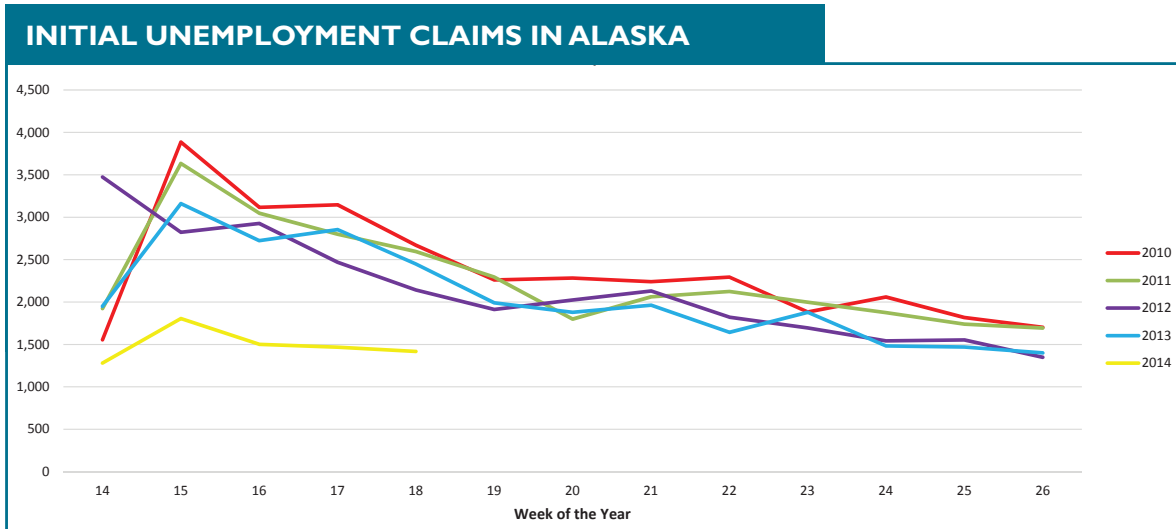
PROFESSIONAL & BUSINESS SERVICES EMPLOYMENT Municipality of Anchorage 2010-Present



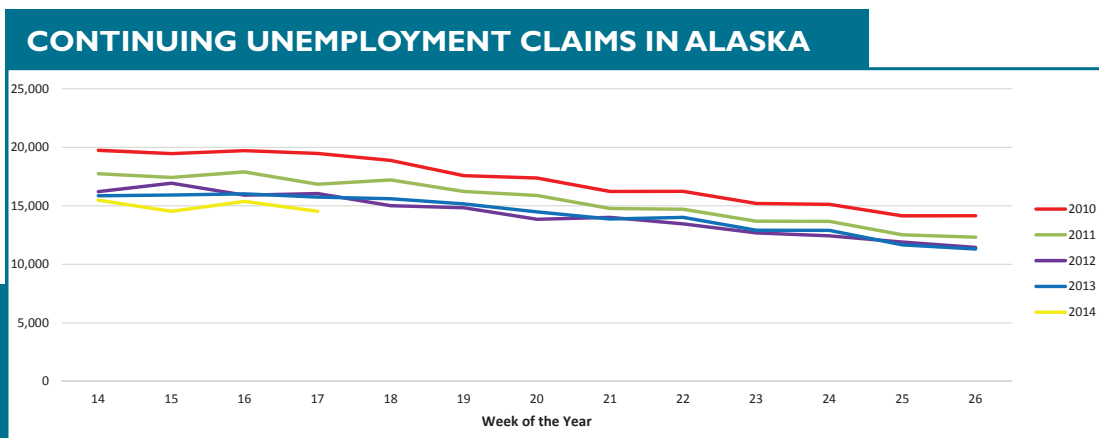
↑ Increase of Professional & Business Services Jobs
200 2013 vs. 2014 YTD Change

UNEMPLOYMENT CLAIMS

Initial unemployment claim applications can be interpreted as a proxy for layoffs. They tend to fall as job growth accelerates. The totals for the second quarter so far are well below 2013 and have dipped below 1,500 much earlier than in recent years. Job retention seems to be holding steady throughout the state, which is also being reflected in the ongoing drop in the state's unemployment rate.



Continuing claims figures help to show how well unemployed workers are re-entering the workforce. This total does not include workers receiving extended benefits from the federal government. The 2014 second quarter numbers have mirrored historic trends, albeit at a lower level. With no major negative economic impacts on the horizon, the 2014 continuing claims trend is expected to continue to parallel past year's movements.



All data referenced in this employment report is from the State of Alaska, Dept. of Labor & Workforce Development website: www.laborstats.alaska.gov and from the U.S. Bureau of Labor Statistics: www.bls.gov.

Report compiled by Anchorage Economic Development Corp. Research Department.

If you are interested in learning more about this data or are interested in how AEDC can help you develop a report, call AEDC at 907.258.3700.

AEDC, 510 L Street, Suite 603, Anchorage, AK 99501

UNEMPLOYMENT ANALYSIS (YTD, 2014)

Anchorage, Mat-Su, Kenai Peninsula Borough

	Jan	Feb	Mar	Apr	May	Jun	Jul	Aug	Sep	Oct	Nov	Dec	14 YTD Avg	13 YTD Avg	14 vs 13 (YTD)
Municipality of Anchorage	Revised	Revised	Revised	Preliminary											
Labor Force	157,114	156,019	156,912	155,873									156,480	156,194	285
Employment	148,838	147,203	148,385	148,108									148,134	147,920	214
Unemployment	8,276	8,816	8,527	7,765									8,346	8,274	72
Unemployment Rate	5.3%	5.7%	5.4%	5.0%									5.3%	5.3%	0.0%
Mat-Su Borough															
Labor Force	44,593	44,245	44,485	43,787									44,278	44,197	81
Employment	40,810	40,362	40,686	40,610									40,617	40,559	58
Unemployment	3,783	3,883	3,799	3,177									3,661	3,638	23
Unemployment Rate	8.5%	8.8%	8.5%	7.3%									8.27%	8.23%	0.04%
Kenai Peninsula Borough															
Labor Force	27,419	27,434	27,406	27,682									27,485	26,894	591
Employment	25,022	24,947	24,999	25,565									25,133	24,531	603
Unemployment	2,397	2,487	2,407	2,117									2,352	2,364	(12)
Unemployment Rate	8.7%	9.1%	8.8%	7.6%									8.6%	8.8%	-0.2%
Southcentral Region															
Labor Force	229,126	227,698	228,803	227,342									228,242	227,285	957
Employment	214,670	212,512	214,070	214,283									213,884	213,010	874
Unemployment	14,456	15,186	14,733	13,059									14,359	14,276	83
Unemployment Rate	6.3%	6.7%	6.4%	5.7%									6.3%	6.3%	0.0%
State of Alaska															
Labor Force	362,147	362,081	363,566	360,602									362,099	360,204	1,895
Employment	335,399	334,280	336,922	337,124									335,931	334,341	1,591
Unemployment	26,748	27,801	26,644	23,478									26,168	25,864	304
Unemployment Rate	7.4%	7.7%	7.3%	6.5%									7.2%	7.2%	0.0%

*Note: These numbers reflect employment, unemployment, etc. for only those people that are residence of the specified City/Region, thus are not inclusive of people who commute to another city for their jobs. (Ex: Someone lives in Wasilla but works in Anchorage. They would be counted in the Mat-Su Borough's labor force and employment numbers, not the Municipality of Anchorage numbers)

INDUSTRY EMPLOYMENT ESTIMATES 2014

Municipality of Anchorage

Industry	Jan	Feb	Mar	Apr	May	Jun	Jul	Aug	Sep	Oct	Nov	Dec	2014 YTD Avg.	2013 YTD Avg.	2014 vs 2013 YTD Change	% Change
	Revised	Revised	Revised	Preliminary												
Total Nonfarm	152,800	154,300	154,700	156,200									154,500	153,900	600	0.39%
Goods Producing	12,400	12,800	12,800	13,100									12,775	12,750	25	0.20%
Services Providing	140,400	141,600	141,900	143,000									141,725	141,150	575	0.41%
Mining and Logging ²	3,700	3,700	3,600	3,600									3,650	3,500	150	4.29%
Oil & Gas	3,500	3,500	3,500	3,400									3,475	3,375	100	2.96%
Construction	6,800	7,100	7,200	7,400									7,125	7,150	-25	-0.35%
Manufacturing	1,900	2,000	2,000	2,100									2,000	2,050	-50	-2.44%
Trade/Transportation/Utilities	32,300	32,200	32,300	32,800									32,400	32,050	350	1.09%
Wholesale Trade	4,700	4,700	4,800	4,900									4,775	4,775	0	0.00%
Retail Trade	17,000	16,800	16,800	17,100									16,925	16,525	400	2.42%
Trans/Warehouse/Utilities	10,600	10,700	10,800	10,800									10,725	10,725	0	0.00%
Information	3,900	3,900	3,900	3,900									3,900	3,725	175	4.70%
Financial Activities	7,500	7,500	7,400	7,500									7,475	7,500	-25	-0.33%
Professional & Business Svcs	20,100	20,500	20,500	20,700									20,450	20,250	200	0.99%
Educational & Health Services	24,900	25,200	25,200	25,200									25,125	24,975	150	0.60%
Health Care	18,200	18,400	18,400	18,300									18,325	18,050	275	1.52%
Leisure & Hospitality	16,300	16,500	16,800	16,800									16,600	16,425	175	1.07%
Accommodation	3,100	3,100	3,200	3,200									3,150	3,175	-25	-0.79%
Food Svcs & Drinking Places	11,100	11,100	11,300	11,300									11,200	11,025	175	1.59%
Other Services	5,900	6,000	6,000	6,000									5,975	5,900	75	1.27%
Government	29,500	29,800	29,700	30,100									29,775	30,275	-500	-1.65%
Federal Government	8,500	8,500	8,400	8,500									8,475	8,800	-325	-3.69%
State Government	10,800	10,900	10,900	11,000									10,900	10,725	175	1.63%
State Education	2,800	3,000	3,000	3,000									2,950	2,750	200	7.27%
Local Government	10,200	10,400	10,400	10,600									10,400	10,750	-350	-3.26%
Local Education	7,400	7,600	7,500	7,800									7,575	8,000	-425	-5.31%

- Nonfarm Wage & Salary excludes self-employed workers, fishers, domestics, and unpaid family workers.

- All totals are seasonally non-adjusted totals.

- Government includes employees of public school systems and the University of Alaska.

- Beginning January 2001, wage and salary employment estimates were published under a new classification system. The Standard Industrial Classification system (SIC) has been replaced by the North American Industry Classification System (NAICS). Data prior to 2001 are comparable only at the Total Nonfarm and Government levels.

^{1/} As of January 2001, certain federally-recognized tribal entities were moved to Local Government, which created a series break for Total Government and Local Government. [Please see the April 2002 Alaska Economic Trends publication for a detailed explanation.](#)

^{2/} This category was called "Natural Resources and Mining" in previous years. The change is in name only; the industries it includes remain the same.

- Some totals may not equal components due to rounding.

- Source: Alaska Department of Labor and Workforce Development, Research and Analysis Section

* **Note:** The above numbers are representative of all people employed in the Municipality of Anchorage, this is inclusive of workers who claim residence outside of the Municipality of Anchorage.

(Ex: someone who lives in the Mat-Su, but works in Anchorage would be included in these number)

Quick Comparisons

14 vs 13 Apr.	700	0.45%
14 vs 13 1st Qtr	567	0.37%
14 vs 13 2nd Qtr	700	0.45%
14 vs 13 3rd Qtr.	-	-
14 vs 13 4th Qtr.	-	-

INDUSTRY EMPLOYMENT ESTIMATES 2014

State of Alaska

Industry	Jan	Feb	Mar	Apr	May	Jun	Jul	Aug	Sep	Oct	Nov	Dec	2014 YTD Avg.	2013 YTD Avg.	2014 vs 2013 YTD Change	% Change
	Revised	Revised	Revised	Preliminary												
Total Nonfarm	317,300	322,300	325,500	329,000									323,525	322,200	1,325	0.41%
Goods Producing	43,600	45,500	46,100	46,400									45,400	43,050	2,350	5.46%
Services Providing	273,700	276,800	279,400	282,600									278,125	279,150	-1,025	-0.37%
Mining and Logging ²	17,000	17,200	17,500	17,900									17,400	16,950	450	2.65%
Mining	16,900	17,000	17,200	17,400									17,125	16,750	375	2.24%
Oil & Gas	14,200	14,200	14,300	14,400									14,275	13,900	375	2.70%
Construction	14,400	14,200	14,400	15,100									14,525	13,600	925	6.80%
Manufacturing	12,200	14,100	14,200	13,400									13,475	12,500	975	7.80%
Seafood Processing	8,700	10,500	10,600	9,800									9,900	8,950	950	10.61%
Trade/Transportation/Utilities	60,500	60,800	61,300	62,800									61,350	60,375	975	1.61%
Wholesale Trade	6,300	6,400	6,400	6,500									6,400	6,450	-50	-0.78%
Retail Trade	35,100	34,900	35,200	36,000									35,300	34,150	1,150	3.37%
Food & Beverage Stores	6,200	6,400	6,400	6,400									6,350	5,900	450	7.63%
General Merchandise Stores	9,900	9,700	9,700	9,900									9,800	9,450	350	3.70%
Trans/Warehouse/Utilities	19,100	19,500	19,700	20,300									19,650	19,775	-125	-0.63%
Air Transportation	5,500	5,500	5,700	5,800									5,625	5,550	75	1.35%
Information	6,200	6,200	6,200	6,100									6,175	6,025	150	2.49%
Telecommunications	4,100	4,100	4,100	4,100									4,100	4,000	100	2.50%
Financial Activities	11,800	11,700	11,600	11,600									11,675	11,875	-200	-1.68%
Professional & Business Svcs	28,200	28,100	28,600	29,200									28,525	29,225	-700	-2.40%
Educational & Health Services	47,100	47,500	47,600	47,200									47,350	47,000	350	0.74%
Health Care	33,600	33,700	33,900	33,500									33,675	33,375	300	0.90%
Leisure & Hospitality	28,500	28,600	29,900	30,600									29,400	29,475	-75	-0.25%
Accommodation	6,100	5,900	6,000	6,200									6,050	6,325	-275	-4.35%
Food Svcs & Drinking Places	18,500	18,600	19,500	19,900									19,125	19,075	50	0.26%
Other Services	11,400	11,100	11,300	11,400									11,300	11,550	-250	-2.16%
Government	80,000	82,800	82,900	83,700									82,350	83,625	-1,275	-1.52%
Federal Government	14,500	14,500	14,600	14,900									14,625	15,425	-800	-5.19%
State Government	24,700	26,600	26,800	27,000									26,275	26,275	0	0.00%
State Education	6,600	8,600	8,600	8,700									8,125	8,200	-75	-0.91%
Local Government	40,800	41,700	41,500	41,800									41,450	41,925	-475	-1.13%
Local Education	22,900	23,800	23,600	23,900									23,550	24,275	-725	-2.99%
Tribal Government ¹	3,600	3,500	3,500	3,500									3,525	3,450	75	2.17%

- Nonfarm Wage & Salary excludes self-employed workers, fishers, domestics, and unpaid family workers.

- All totals are non-seasonally adjusted totals.

- Government includes employees of public school systems and the University of Alaska.

- Beginning January 2001, wage and salary employment estimates were published under a new classification system. The Standard Industrial Classification system (SIC) has been replaced by the North American Industry Classification System (NAICS). Data prior to 2001 are comparable only at the Total Nonfarm and Government levels.

^{1/} As of January 2001, certain federally-recognized tribal entities were moved to Local Government, which created a series break for Total Government and Local Government. [Please see the April 2002 Alaska Economic Trends publication for a detailed explanation.](#)

^{2/} This category was called "Natural Resources and Mining" in previous years. The change is in name only; the industries it includes remain the same.

- Totals may not equal sub-sections due to rounding.

- Source: Alaska Department of Labor and Workforce Development, Research and Analysis Section

Quick Comparisons

14 vs 13		
Apr.	500	0.15%
14 vs 13		
1st Qtr	1,600	0.50%
14 vs 13		
2nd Qtr	500	0.15%
14 vs 13		
3rd Qtr.		
14 vs 13		
4th Qtr		

Press Release

COMMISSIONER'S OFFICE

May 16, 2014

No. 14-22

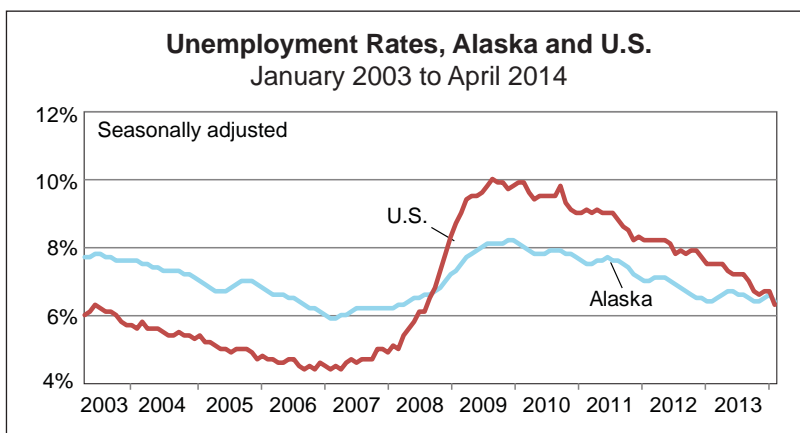
Unemployment rate at 6.4 percent in April

Alaska's seasonally adjusted unemployment rate was 6.4 percent in April, down from 6.6 percent in March. The comparable national rate was 6.3 percent, down from March's 6.7 percent.

The significant decline in the U.S. rate pushed it below Alaska's for the first time in nearly five-and-a-half years. While this reversal may seem noteworthy in the context of recent history, it is really just a return to normalcy. Alaska's rate was higher than the nation's from 1983 until 2008.

Alaska's not-seasonally adjusted unemployment rate was 6.5 percent in April, down eight-tenths of a percentage point from March. Large drops in the unadjusted rate are typical in April.

Not-seasonally adjusted rates fell in all but one of Alaska's boroughs and census areas. The lone rate increase was in the Aleutians West Census Area with the wrap-up of the winter pollock season. The largest rate declines were in Southeast, where momentum was building for the upcoming cruise ship season. The unemployment rate fell from 21.6 to 13.1 percent in Skagway, which was the biggest change around the state.



Unemployment Rates, Seasonally Adjusted			
	4/14	3/14	4/13
Alaska	6.4%	6.6%	6.4%
U.S.	6.3%	6.7%	7.5%

Sources for graph and table: Alaska Department of Labor and Workforce Development, Research and Analysis Section; and U.S. Bureau of Labor Statistics

For detailed employment estimates, see <http://live.laborstats.alaska.gov/ces/>. The estimates are preliminary and subject to potentially large revisions.

Contact: Dan Robinson, Economist (907) 465-6040

Research and Analysis Web site: laborstats.alaska.gov

Labor Force by Borough and Census Area, Not Seasonally Adjusted¹

	Civilian Labor Force			Unemployed					
	4/14 ^P	3/14	4/13	Number			Rate		
				4/14 ^P	3/14	4/13	4/14 ^P	3/14	4/13
Alaska Statewide	360,602	363,566	359,761	23,478	26,644	23,774	6.5	7.3	6.6
Anchorage/Mat-Su Region	199,660	201,397	199,156	10,942	12,326	11,132	5.5	6.1	5.6
Anchorage, Municipality of	155,873	156,912	155,468	7,765	8,527	7,905	5.0	5.4	5.1
Matanuska-Susitna Borough	43,787	44,485	43,688	3,177	3,799	3,227	7.3	8.5	7.4
Gulf Coast Region	39,477	39,011	38,898	2,906	3,314	2,923	7.4	8.5	7.5
Kenai Peninsula Borough	27,682	27,406	27,237	2,117	2,407	2,108	7.6	8.8	7.7
Kodiak Island Borough	6,849	6,777	6,780	333	350	352	4.9	5.2	5.2
Valdez-Cordova Census Area	4,946	4,828	4,881	456	557	463	9.2	11.5	9.5
Interior Region	52,732	52,713	52,495	3,479	3,955	3,622	6.6	7.5	6.9
Denali Borough	766	721	789	114	135	131	14.9	18.7	16.6
Fairbanks North Star Borough	45,482	45,485	45,190	2,487	2,821	2,658	5.5	6.2	5.9
Southeast Fairbanks Census Area	3,297	3,277	3,335	380	443	368	11.5	13.5	11.0
Yukon-Koyukuk Census Area	3,187	3,230	3,181	498	556	465	15.6	17.2	14.6
Northern Region	12,928	13,208	12,644	1,218	1,328	1,184	9.4	10.1	9.4
Nome Census Area	4,143	4,263	4,057	489	528	476	11.8	12.4	11.7
North Slope Borough	5,670	5,744	5,592	224	245	264	4.0	4.3	4.7
Northwest Arctic Borough	3,115	3,201	2,995	505	555	444	16.2	17.3	14.8
Southeast Region	38,141	37,623	38,070	2,529	3,058	2,466	6.6	8.1	6.5
Haines Borough	1,198	1,186	1,197	112	138	102	9.3	11.6	8.5
Hoonah-Angoon Census Area	966	919	941	190	234	167	19.7	25.5	17.7
Juneau, City and Borough of	17,976	17,935	17,978	824	954	827	4.6	5.3	4.6
Ketchikan Gateway Borough	7,608	7,426	7,611	516	605	524	6.8	8.1	6.9
Petersburg Census Area	1,644	1,554	1,625	165	189	148	10.0	12.2	9.1
Prince of Wales-Hyder Census Area	2,438	2,378	2,403	330	433	297	13.5	18.2	12.4
Sitka, City and Borough of	4,418	4,447	4,419	215	256	219	4.9	5.8	5.0
Skagway, Municipality of	572	560	577	75	121	81	13.1	21.6	14.0
Wrangell, City and Borough of	1,040	987	1,039	77	99	77	7.4	10.0	7.4
Yakutat, City and Borough of	281	231	280	25	29	24	8.9	12.6	8.6
Southwest Region	17,661	19,613	18,499	2,401	2,662	2,447	13.6	13.6	13.2
Aleutians East Borough	1,499	1,338	1,587	97	107	114	6.5	8.0	7.2
Aleutians West Census Area	3,109	4,348	3,326	191	205	265	6.1	4.7	8.0
Bethel Census Area	6,790	7,394	7,105	1,110	1,231	1,121	16.3	16.6	15.8
Bristol Bay Borough	537	480	569	40	44	42	7.4	9.2	7.4
Dillingham Census Area	2,000	2,140	2,084	204	223	199	10.2	10.4	9.5
Lake and Peninsula Borough	976	993	1,010	99	111	89	10.1	11.2	8.8
Wade Hampton Census Area	2,750	2,920	2,818	660	741	617	24.0	25.4	21.9

P = Preliminary. As more information becomes available, data are revised every month for the previous month and again at the end of every calendar year.

Note: The official definition of unemployment excludes anyone who has not made an active attempt to find work in the four-week period up to and including the week that includes the 12th of the reference month. Many in rural Alaska do not meet the definition because they have not conducted an active job search due to the scarcity of employment opportunities.

¹Unemployment rates that are not seasonally adjusted should not be compared with those that are.

Source: Alaska Department of Labor and Workforce Development, Research and Analysis Section; and U.S. Bureau of Labor Statistics

