



AEDDC
Anchorage Economic
Development Corporation

March 2014 Employment Report Anchorage

Sponsored by:



First National Bank
A L A S K A
MEMBER FDIC

5.5%

March Unemployment
Rate for Anchorage

MONTHLY UNEMPLOYMENT

The unemployment rate for Anchorage in March was 5.5 percent and down 0.2 percent from February. This is well below the national rate of 6.8 percent and the statewide rate of 7.4 percent. Each year, Anchorage's unemployment rate follows a pattern: Unemployment spikes in January or February, then declines monthly until a second spike in June. This year's spring pattern closely resembles last year's trend, so it is anticipated that the rate will once again be below 5 percent for much of the second half of the year. *As always, it should be noted that these are preliminary survey figures for March and will be revised next month.*

YEAR-TO-DATE UNEMPLOYMENT

The average year-to-date (YTD) non-seasonally adjusted unemployment rate in Anchorage was 5.5 percent at the end of March, which is 0.1 percent lower than the 2013 YTD average. A decrease of 1,102 in the employment total combined with a decrease of 871 in the Anchorage labor force during the YTD period has resulted in a reduction of 230 people in the reported unemployment total. The total number of unemployed people in Anchorage for the month of March is estimated at 8,650 (those actively looking for jobs), 612 more than March 2013. In the Mat-Su and Kenai Peninsula Boroughs, the monthly unemployment rate is down 0.2 and 0.7 percent, respectively, from 2013 YTD (see the charts at the end of this report for more details).

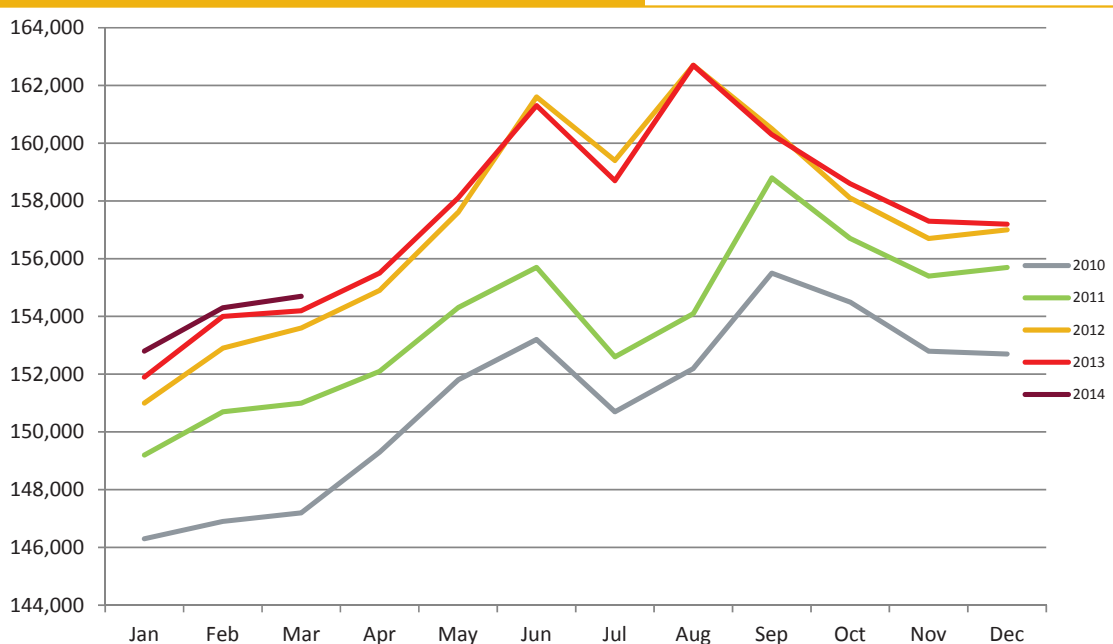
It is important to note that these unemployment numbers represent the labor force residing in Anchorage, and do not include jobs in Anchorage held by residents from outside the municipality. The industry employment estimates referenced in the remainder of this report are representative of all jobs in the Municipality of Anchorage, regardless of the job holder's place of residency.

ANCHORAGE INDUSTRY EMPLOYMENT ESTIMATES

As for Anchorage industry employment estimates, the YTD average is continuing to show improvement over 2013 with a total net increase of 567 jobs so far. The private sector (total jobs minus government jobs) has grown by 1,066 jobs during this time, equaling a growth rate of 0.9 percent. Government employment has declined by 500 jobs so far, with losses split between federal and local education.

In the Goods Producing category, the Oil & Gas industry is showing the largest YTD growth, while Service Providing industries such as Information, Educational & Health Services and Financial Activities are also showing strong growth.

ANCHORAGE EMPLOYMENT
Municipality of Anchorage 2010-Present



MONTHLY REVISIONS

Each month, the Alaska Department of Labor's Research and Analysis Division revises the previous month employment numbers based on the availability of newer or late arriving data. The following tables show the changes in Anchorage's and Alaska's February job totals by industry.

Most adjustments are relatively minor; however, some changes do occur which are significant. Changes such as these are normally the result of rounding errors, job classification modifications, sample size or modeling issues, or errors within the industry.

FEB. 2014 REVISIONS, ANCHORAGE			
<i>Industry</i>	<i>Preliminary Total</i>	<i>Revised Total</i>	<i>Net Change</i>
Total Nonfarm	154,100	154,300	+200
Goods Producing	12,500	12,800	+300
Construction	6,900	7,100	+200
Manufacturing	1,900	2,000	+100
Trade/Transportation/Utilities	32,300	32,200	-100
Wholesale Trade	4,800	4,700	-100
Trans/Warehouse/Utilities	10,800	10,700	-100
Professional & Business Services	20,400	20,500	+100
Educational & Health Services	25,300	25,200	-100
Federal Government	8,400	8,500	+100
FEB. 2014 REVISIONS, ALASKA			
<i>Industry</i>	<i>Preliminary Total</i>	<i>Revised Total</i>	<i>Net Change</i>
Total Nonfarm	322,400	322,300	-100
Services Providing	276,900	276,800	-100
Trade, Transportation, Utilities	60,900	60,800	-100
Wholesale Trade	6,500	6,400	-100
Retail Trade	34,800	34,900	+100
Food & Beverage Stores	6,300	6,400	+100
Trans/Warehouse/Utilities	19,600	19,500	-100
Air Transportation	5,600	5,500	-100
Federal Government	14,400	14,500	+100
Local Government	41,800	41,700	-100

GOODS PRODUCING JOBS

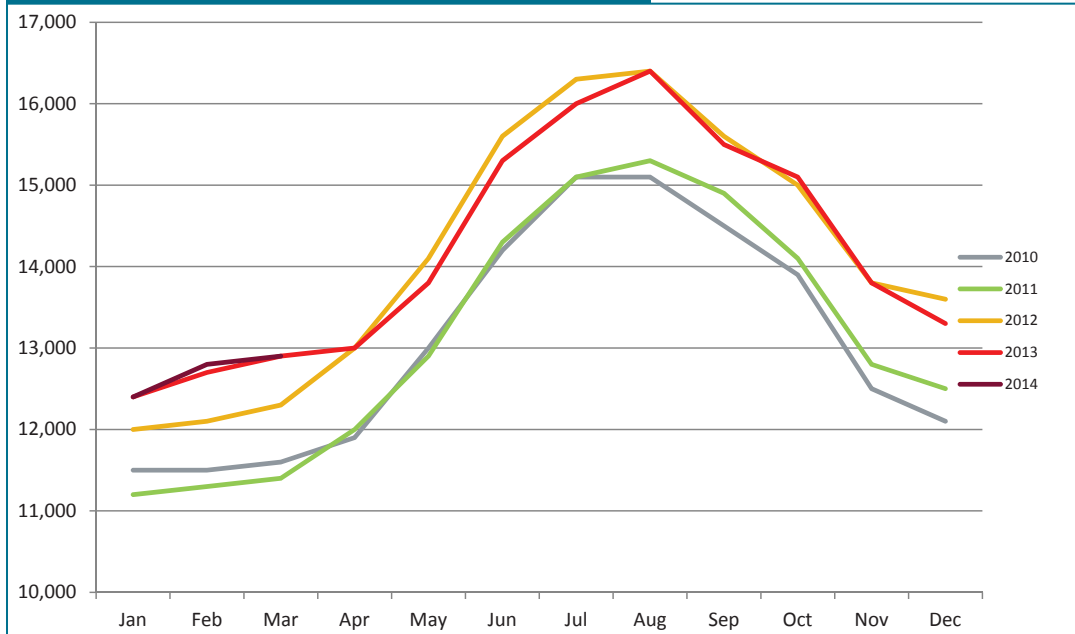
CONSTRUCTION WORK, MINING, OIL & GAS PRODUCTION, MANUFACTURING

Growth in the number of Goods Producing jobs (those jobs that are specifically tied to production, not those which support the production or maintenance of the production jobs) has improved since February and is now showing positive gains of 33 jobs over last year. A sizable increase of 200 jobs in the mining & logging industry (which includes oil & gas employment) is the largest contributing factor, while construction employment has remained essentially flat (YTD jobs average is down 33 jobs from 2013 YTD).

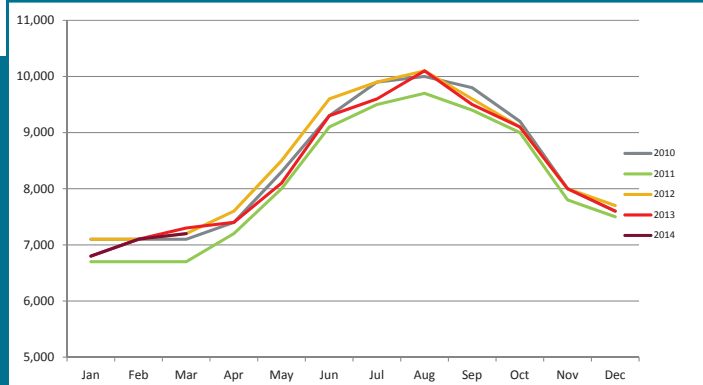
The oil & gas sector YTD jobs average is up 133 from 2013 YTD; with a solid growth rate of 3.92 percent. A number of positive developments, such as increased exploration, the announcement of a number of North Slope projects and January oil production estimates that were higher than expected, are all pointing to continuing optimism in this sector.

The construction industry, as noted earlier, is mostly unchanged from the 2013 YTD total. Historically, the first four months of the year see slow increases in construction job numbers, with the total growing rapidly during the summer construction season. It remains to be seen how much growth we can expect this summer. The number and dollar amount of municipal building permits applied for so far this year are both very high. There was considerable permitting done in 2013 and many of those projects are expected to break ground this summer.

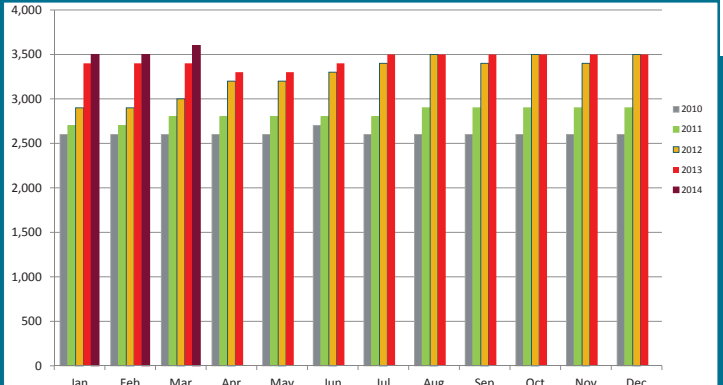
GOODS PRODUCING JOBS
Municipality of Anchorage 2010-Present



CONSTRUCTION EMPLOYMENT
Municipality of Anchorage 2010-Present



OIL & GAS EMPLOYMENT
Municipality of Anchorage 2010-Present



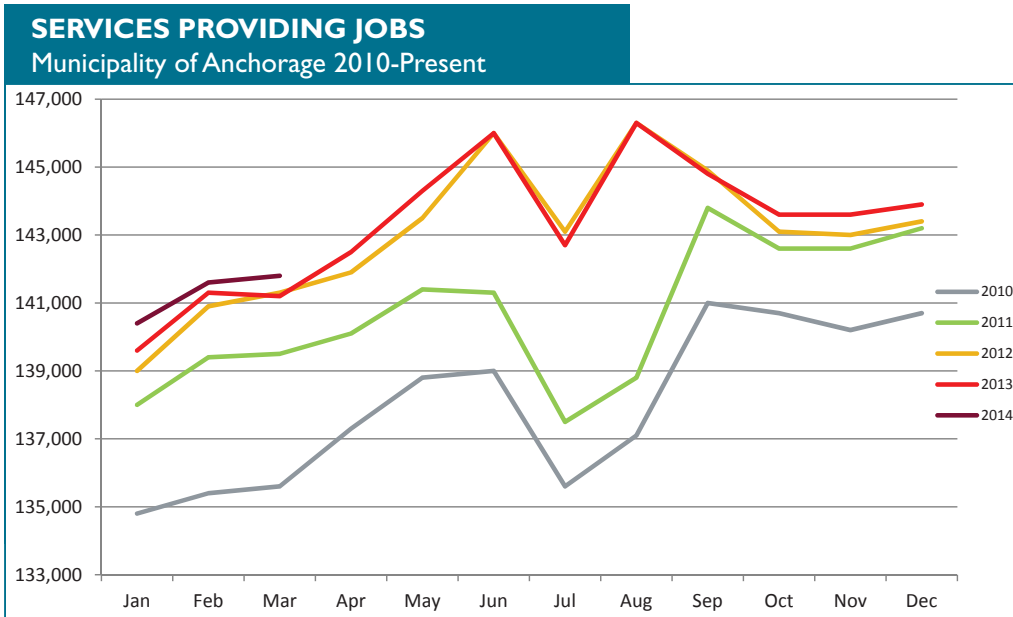
SERVICES PROVIDING JOBS

ENGINEERING, RETAIL, TOURISM, HEALTH CARE, ETC.

Services Providing jobs in Anchorage totaled 141,800 for March. Overall, the YTD average is up 567 jobs from 2013 YTD. The information sector's growth rate is 5.41 percent this year, making it by far the highest growth sector in the service industry. The professional and business services industry is also seeing significant growth, with YTD job growth at 1.32 percent over last year. Improvement in the information industry is a noteworthy event, as this segment has been losing jobs annually since 2011.

From 2008 to 2012, the retail trade sector either lost jobs or stayed flat each year. In 2013, a small annual gain of 50 jobs was recorded. The retail trade sector YTD jobs average is up 370 jobs from 2013 YTD. New entrants into the market, combined with renovations and expansion in existing retail businesses are driving this growth, and we expect Anchorage to maintain these gains through the year.

Federal and local government sectors are both averaging less than this point last year (both at -367), but the state government jobs average is up 233 jobs YTD from 2013 due to a 10 percent YTD growth in state education positions.



SERVICES PROVIDING JOBS

Increase of Services Providing Jobs
+570
2013 vs. 2014 YTD Change

141,800
Services Providing Jobs in Anchorage for March 2014 (total)

**MARCH 13 vs. MARCH 14
YEAR TO DATE CHANGE**

Educational & Health Services

+170

Professional & Business Services

+270

Information

+200

Retail

+370

Leisure & Hospitality

+100

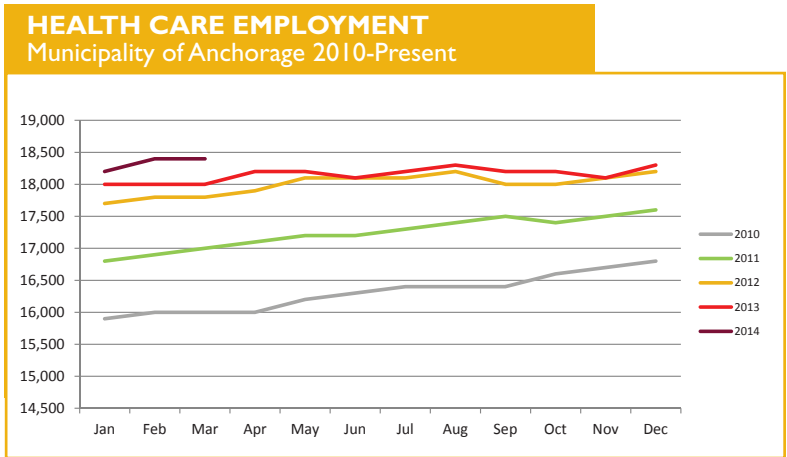
Government

-500

••••• SERVICES PROVIDING JOBS SUMMARY

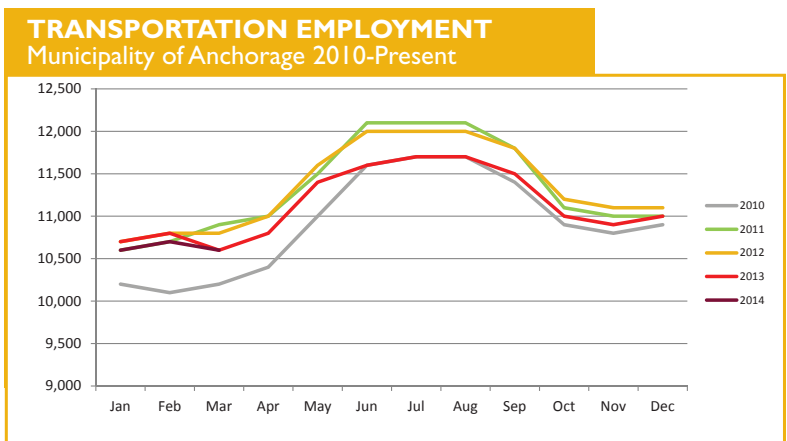
HEALTH CARE EMPLOYMENT

Employment in the health care industry is still doing well, with 333 more jobs over 2013 YTD. The 1.85 percent YTD job growth in the local health care sector is more than two times the 2013 end of year rate, and is still one of the fastest growing service providing industries. This strong growth in the first quarter is a very positive indicator for the remainder of the year, and we are confident that this sector will meet AEDC's January projection of 250 additional health care jobs by the end of the year.



TRANSPORTATION

The March estimate of 10,600 jobs is the same as March 2013, and YTD the average is down by 67 jobs. Employment in this sector has been flat or contracting for four of the last five years and no significant change is expected this year. Improvement in the national retail economy may bolster the number of cargo planes passing through Ted Stevens Anchorage International Airport, which may in turn stimulate hiring. A positive outlook for the state's summer tourist season is also giving some hope for stability or even improvement in transportation job numbers.

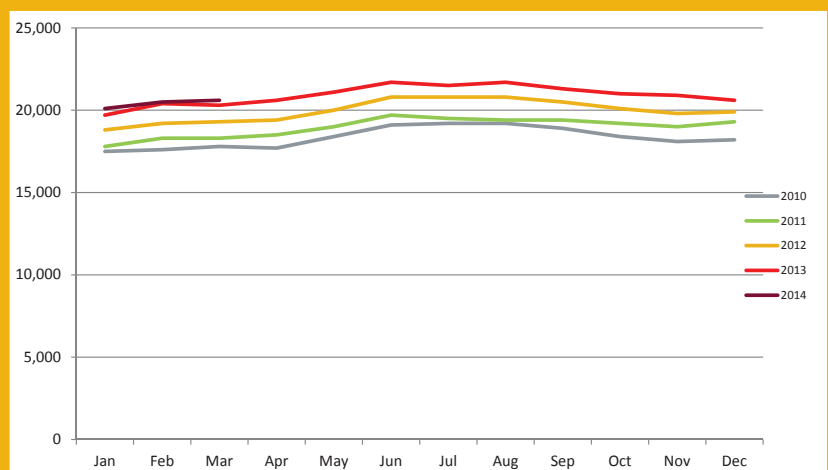


PROFESSIONAL & BUSINESS SERVICES

ENGINEERING, ARCHITECTURE, LEGAL SERVICES, ACCOUNTING, SCIENTIFIC RESEARCH, WASTE MANAGEMENT & ADMINISTRATIVE SERVICES

The YTD average for this industry continues to improve and is up 267 jobs from 2013 YTD. The rate of increase in jobs is one of the largest of all service providing industries at 1.32 percent. Job growth within professional and business services is often tied to growth in other industries such as Oil & Gas, Construction and Transportation. The YTD trends in these other industries have been either for slow growth or flat, so it remains to be seen if this industry's growth will be maintained through the year.

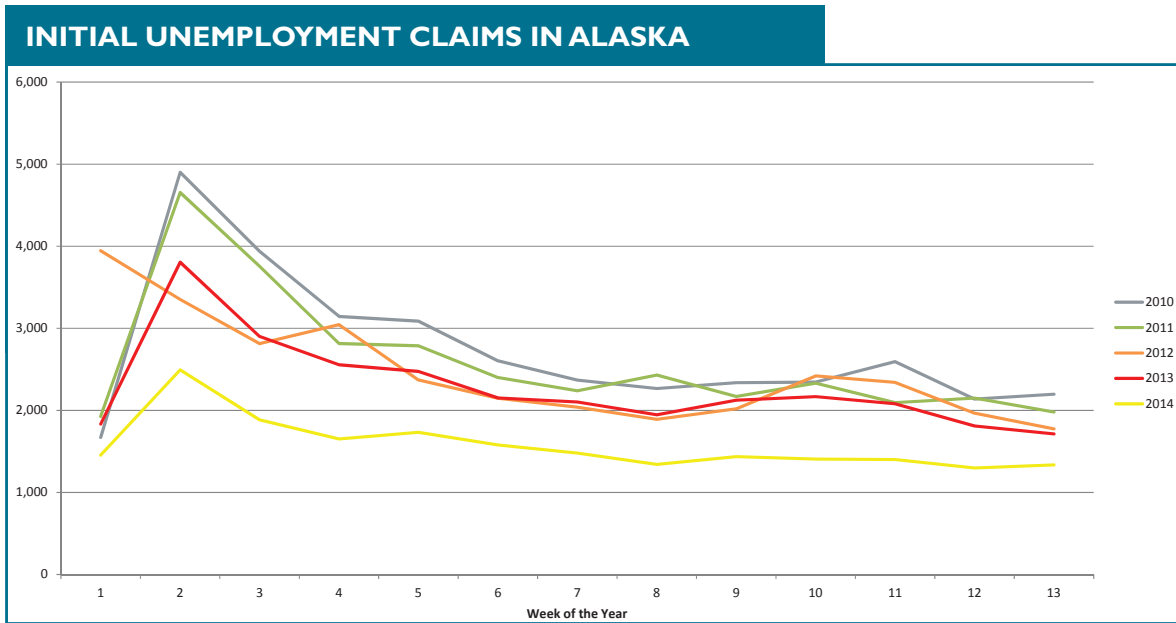
PROFESSIONAL & BUSINESS SERVICES EMPLOYMENT Municipality of Anchorage 2010-Present



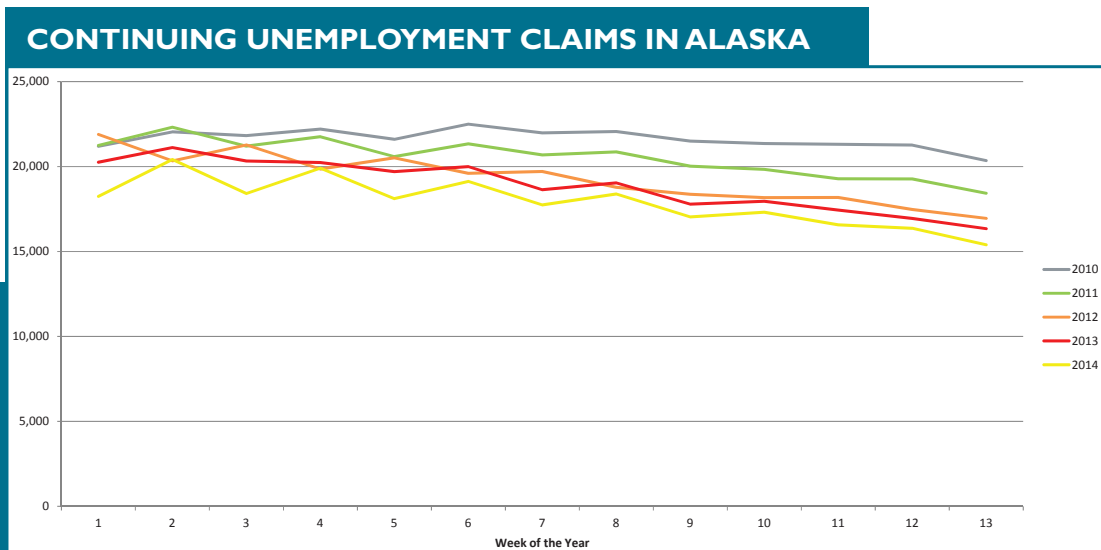
↑ Increase of Professional & Business Services Jobs
267 2013 vs. 2014 YTD Change

UNEMPLOYMENT CLAIMS

Initial unemployment claim applications can be interpreted as a proxy for layoffs. They tend to fall as job growth accelerates. The totals for the first quarter were well below 2013's and are expected to stay well below the 2,000 mark for the time being and perhaps be below 1,000 by the end of June. Job retention seems to be holding steady throughout the state.



Continuing claims figures help to show how well unemployed workers are re-entering the workforce. This total does not include workers receiving extended benefits from the federal government. 2014's first quarter's numbers have mirrored historic trends, albeit at a lower level. With no major negative economic impacts on the horizon, the 2014 continuing claims trend is expected to continue to parallel past year's movements.



All data referenced in this employment report is from the State of Alaska, Dept. of Labor & Workforce Development website: www.laborstats.alaska.gov and from the U.S. Bureau of Labor Statistics: www.bls.gov.

Report compiled by Anchorage Economic Development Corp. Research Department.

If you are interested in learning more about this data or are interested in how AEDC can help you develop a report, call AEDC at 907.258.3700.

AEDC, 510 L Street, Suite 603, Anchorage, AK 99501



First National Bank
ALASKA

UNEMPLOYMENT ANALYSIS (YTD, 2014)

Anchorage, Mat-Su, Kenai Peninsula Borough

	Jan	Feb	Mar	Apr	May	Jun	Jul	Aug	Sep	Oct	Nov	Dec	14 YTD Avg	13 YTD Avg	14 vs 13 (YTD)
Municipality of Anchorage	Revised	Revised	Preliminary												
Labor Force	157,114	156,019	156,644										156,592	157,694	(1,102)
Employment	148,838	147,203	147,994										148,012	148,883	(871)
Unemployment	8,276	8,816	8,650										8,581	8,811	(230)
Unemployment Rate	5.3%	5.7%	5.5%										5.5%	5.6%	-0.1%
Mat-Su Borough															
Labor Force	44,593	44,245	44,433										44,424	44,808	(384)
Employment	40,810	40,362	40,579										40,584	40,823	(239)
Unemployment	3,783	3,883	3,854										3,840	3,985	(145)
Unemployment Rate	8.5%	8.8%	8.7%										8.6%	8.9%	-0.2%
Kenai Peninsula Borough															
Labor Force	27,419	27,434	27,877										27,577	26,737	840
Employment	25,022	24,947	25,435										25,135	24,171	964
Unemployment	2,397	2,487	2,442										2,442	2,566	(124)
Unemployment Rate	8.7%	9.1%	8.8%										8.9%	9.6%	-0.7%
Southcentral Region															
Labor Force	229,126	227,698	228,954										228,593	229,239	(646)
Employment	214,670	212,512	214,008										213,730	213,877	(147)
Unemployment	14,456	15,186	14,946										14,863	15,362	(499)
Unemployment Rate	6.3%	6.7%	6.5%										6.5%	6.7%	-0.2%
State of Alaska															
Labor Force	362,147	362,081	363,819										362,682	361,207	1,475
Employment	335,399	334,280	336,788										335,489	333,192	2,297
Unemployment	26,748	27,801	27,031										27,193	28,015	(822)
Unemployment Rate	7.4%	7.7%	7.4%										7.5%	7.8%	-0.3%

*Note: These numbers reflect employment, unemployment, etc. for only those people that are residence of the specified City/Region, thus are not inclusive of people who commute to another city for their jobs. (Ex: Someone lives in Wasilla but works in Anchorage. They would be counted in the Mat-Su Borough's labor force and employment numbers, not the Municipality of Anchorage numbers)

INDUSTRY EMPLOYMENT ESTIMATES 2014

Municipality of Anchorage

Industry	Jan	Feb	Mar	Apr	May	Jun	Jul	Aug	Sep	Oct	Nov	Dec	2014 YTD Avg.	2013 YTD Avg.	2014 vs 2013 YTD Change	% Change
	Revised	Revised	Preliminary													
Total Nonfarm	152,800	154,300	154,700										153,933	153,367	567	0.37%
Goods Producing	12,400	12,800	12,900										12,700	12,667	33	0.26%
Services Providing	140,400	141,600	141,800										141,267	140,700	567	0.40%
Mining and Logging ²	3,700	3,700	3,700										3,700	3,500	200	5.71%
Oil & Gas	3,500	3,500	3,600										3,533	3,400	133	3.92%
Construction	6,800	7,100	7,200										7,033	7,067	-33	-0.47%
Manufacturing	1,900	2,000	2,000										1,967	2,033	-67	-3.28%
Trade/Transportation/Utilities	32,300	32,200	32,200										32,233	31,967	267	0.83%
Wholesale Trade	4,700	4,700	4,800										4,733	4,733	0	0.00%
Retail Trade	17,000	16,800	16,800										16,867	16,500	367	2.22%
Trans/Warehouse/Utilities	10,600	10,700	10,600										10,633	10,700	-67	-0.62%
Information	3,900	3,900	3,900										3,900	3,700	200	5.41%
Financial Activities	7,500	7,500	7,400										7,467	7,500	-33	-0.44%
Professional & Business Svcs	20,100	20,500	20,600										20,400	20,133	267	1.32%
Educational & Health Services	24,900	25,200	25,200										25,100	24,933	167	0.67%
Health Care	18,200	18,400	18,400										18,333	18,000	333	1.85%
Leisure & Hospitality	16,300	16,500	16,700										16,500	16,400	100	0.61%
Accommodation	3,100	3,100	3,200										3,133	3,167	-33	-1.05%
Food Svcs & Drinking Places	11,100	11,100	11,300										11,167	10,967	200	1.82%
Other Services	5,900	6,000	6,000										5,967	5,867	100	1.70%
Government	29,500	29,800	29,700										29,667	30,167	-500	-1.66%
Federal Government	8,500	8,500	8,400										8,467	8,833	-367	-4.15%
State Government	10,800	10,900	10,900										10,867	10,633	233	2.19%
State Education	2,800	3,000	3,000										2,933	2,667	267	10.00%
Local Government	10,200	10,400	10,400										10,333	10,700	-367	-3.43%
Local Education	7,400	7,600	7,500										7,500	7,967	-467	-5.86%

- Nonfarm Wage & Salary excludes self-employed workers, fishers, domestics, and unpaid family workers.

- All totals are seasonally non-adjusted totals.

- Government includes employees of public school systems and the University of Alaska.

- Beginning January 2001, wage and salary employment estimates were published under a new classification system. The Standard Industrial Classification system (SIC) has been replaced by the North American Industry Classification System (NAICS). Data prior to 2001 are comparable only at the Total Nonfarm and Government levels.

^{1/} As of January 2001, certain federally-recognized tribal entities were moved to Local Government, which created a series break for Total Government and Local Government. Please see the April 2002 Alaska Economic Trends publication for a detailed explanation.

^{2/} This category was called "Natural Resources and Mining" in previous years. The change is in name only; the industries it includes remain the same.

- Some totals may not equal components due to rounding.

- Source: Alaska Department of Labor and Workforce Development, Research and Analysis Section

*** Note:** The above numbers are representative of all people employed in the Municipality of Anchorage, this is inclusive of workers who claim residence outside of the Municipality of Anchorage.

(Ex: someone who lives in the Mat-Su, but works in Anchorage would be included in these number)

Quick Comparisons

14 vs 13 Mar.	500	0.32%
14 vs 13 1st Qtr	567	0.37%
14 vs 13 2nd Qtr	-	-
14 vs 13 3rd Qtr.	-	-
14 vs 13 4th Qtr.	-	-

INDUSTRY EMPLOYMENT ESTIMATES 2014

State of Alaska

Industry	Jan	Feb	Mar	Apr	May	Jun	Jul	Aug	Sep	Oct	Nov	Dec	2014 YTD Avg.	2013 YTD Avg.	2014 vs 2013 YTD Change	% Change
	Revised	Revised	Preliminary													
Total Nonfarm	317,300	322,300	324,800										319,800	318,050	1,750	0.55%
Goods Producing	43,600	45,500	45,700										44,550	41,650	2,900	6.96%
Services Providing	273,700	276,800	279,100										275,250	276,400	-1,150	-0.42%
Mining and Logging ²	17,000	17,200	17,500										17,100	16,650	450	2.70%
Mining	16,900	17,000	17,200										16,950	16,500	450	2.73%
Oil & Gas	14,200	14,200	14,300										14,200	13,750	450	3.27%
Construction	14,400	14,200	14,100										14,300	13,000	1,300	10.00%
Manufacturing	12,200	14,100	14,100										13,150	12,000	1,150	9.58%
Seafood Processing	8,700	10,500	10,600										9,600	8,500	1,100	12.94%
Trade/Transportation/Utilities	60,500	60,800	61,100										60,650	59,950	700	1.17%
Wholesale Trade	6,300	6,400	6,400										6,350	6,400	-50	-0.78%
Retail Trade	35,100	34,900	35,000										35,000	34,050	950	2.79%
Food & Beverage Stores	6,200	6,400	6,300										6,300	5,900	400	6.78%
General Merchandise Stores	9,900	9,700	9,700										9,800	9,500	300	3.16%
Trans/Warehouse/Utilities	19,100	19,500	19,700										19,300	19,500	-200	-1.03%
Air Transportation	5,500	5,500	5,700										5,500	5,500	0	0.00%
Information	6,200	6,200	6,200										6,200	6,000	200	3.33%
Telecommunications	4,100	4,100	4,000										4,100	4,000	100	2.50%
Financial Activities	11,800	11,700	11,600										11,750	11,850	-100	-0.84%
Professional & Business Svcs	28,200	28,100	28,600										28,150	29,000	-850	-2.93%
Educational & Health Services	47,100	47,500	47,500										47,300	46,750	550	1.18%
Health Care	33,600	33,700	33,900										33,650	33,250	400	1.20%
Leisure & Hospitality	28,500	28,600	29,700										28,550	28,750	-200	-0.70%
Accommodation	6,100	5,900	6,000										6,000	6,100	-100	-1.64%
Food Svcs & Drinking Places	18,500	18,600	19,300										18,550	18,750	-200	-1.07%
Other Services	11,400	11,100	11,300										11,250	11,450	-200	-1.75%
Government	80,000	82,800	83,100										81,400	82,650	-1,250	-1.51%
Federal Government	14,500	14,500	14,600										14,500	15,350	-850	-5.54%
State Government	24,700	26,600	26,800										25,650	25,600	50	0.20%
State Education	6,600	8,600	8,600										7,600	7,700	-100	-1.30%
Local Government	40,800	41,700	41,700										41,250	41,700	-450	-1.08%
Local Education	22,900	23,800	23,600										23,350	24,100	-750	-3.11%
Tribal Government ¹	3,600	3,500	3,500										3,550	3,400	150	4.41%

- Nonfarm Wage & Salary excludes self-employed workers, fishers, domestics, and unpaid family workers.

- All totals are non-seasonally adjusted totals.

- Government includes employees of public school systems and the University of Alaska.

- Beginning January 2001, wage and salary employment estimates were published under a new classification system. The Standard Industrial Classification system (SIC) has been replaced by the North American Industry Classification System (NAICS). Data prior to 2001 are comparable only at the Total Nonfarm and Government levels.

^{1/} As of January 2001, certain federally-recognized tribal entities were moved to Local Government, which created a series break for Total Government and Local Government. [Please see the April 2002 Alaska Economic Trends publication for a detailed explanation.](#)

^{2/} This category was called "Natural Resources and Mining" in previous years. The change is in name only; the industries it includes remain the same.

- Totals may not equal sub-sections due to rounding.

- Source: Alaska Department of Labor and Workforce Development, Research and Analysis Section

Quick Comparisons

14 vs 13 Mar.	600	0.19%
14 vs 13 1st Qtr	1,367	0.43%
14 vs 13 2nd Qtr		
14 vs 13 3rd Qtr.		
14 vs 13 4th Qtr		

Press Release

COMMISSIONER'S OFFICE

April 18, 2014

No. 14-18

Unemployment rate at 6.6 percent in March

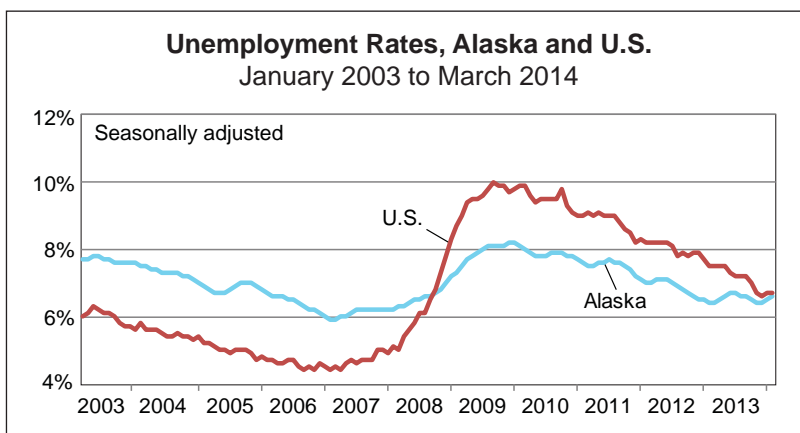
Alaska's seasonally adjusted unemployment rate was 6.6 percent in March, up one-tenth of a percentage point from February. The comparable national rate was 6.7 percent.

As the national rate has crept down, it has become increasingly evident it will soon drop below Alaska's rate after a long stretch of being higher. That says more about the U.S. economy's continuing recovery than about any fundamental change for Alaska. The state's rate had always been higher than the nation's until the recession pushed the U.S. rate close to double its pre-recession level. Alaska's rate climbed too, but less dramatically, and returned more quickly to its historical average.

Alaska's not-seasonally adjusted unemployment rate was 7.4 percent in March, down from 7.7 percent in February. Along with longer days and hints of spring, March heralds the beginning of the unadjusted rate's descent into summer lows as seasonal work picks up. Rates fell in 26 of 29 boroughs and census areas from February to March.

The North Slope Borough continued to have the lowest rate in the state in March, at 4.3 percent. Wade Hampton Census Area narrowly eclipsed Hoonah-Angoon Census Area for the highest rate statewide, at 25.8 and 25.7 percent respectively.

Contact: Caroline Schultz, Economist (907) 465-6027
Research and Analysis Web site: laborstats.alaska.gov



Unemployment Rates, Seasonally Adjusted			
	3/14	2/14	3/13
Alaska	6.6%	6.5%	6.4%
U.S.	6.7%	6.7%	7.5%

Sources for graph and table: Alaska Department of Labor and Workforce Development, Research and Analysis Section; and U.S. Bureau of Labor Statistics

For detailed employment estimates, see <http://live.laborstats.alaska.gov/ces/>. The estimates are preliminary and subject to potentially large revisions.

Labor Force by Borough and Census Area, Not Seasonally Adjusted¹

	Civilian Labor Force			Unemployed					
	3/14 ^P	2/14	3/13	Number			Rate		
				3/14 ^P	2/14	3/13	3/14 ^P	2/14	3/13
Alaska Statewide	363,819	362,081	359,354	27,031	27,801	25,090	7.4	7.7	7.0
Anchorage/Mat-Su Region	201,077	200,264	199,274	12,504	12,699	11,614	6.2	6.3	5.8
Anchorage, Municipality of	156,644	156,019	155,315	8,650	8,816	8,038	5.5	5.7	5.2
Matanuska-Susitna Borough	44,433	44,245	43,959	3,854	3,883	3,576	8.7	8.8	8.1
Gulf Coast Region	39,694	39,088	38,262	3,364	3,471	3,171	8.5	8.9	8.3
Kenai Peninsula Borough	27,877	27,434	26,843	2,442	2,487	2,322	8.8	9.1	8.7
Kodiak Island Borough	6,901	6,943	6,719	356	394	346	5.2	5.7	5.1
Valdez-Cordova Census Area	4,916	4,711	4,700	566	590	503	11.5	12.5	10.7
Interior Region	52,726	52,613	52,424	4,012	4,219	3,843	7.6	8.0	7.3
Denali Borough	734	715	751	137	153	163	18.7	21.4	21.7
Fairbanks North Star Borough	45,367	45,341	45,219	2,862	3,011	2,788	6.3	6.6	6.2
Southeast Fairbanks Census Area	3,336	3,348	3,271	449	469	403	13.5	14.0	12.3
Yukon-Koyukuk Census Area	3,289	3,209	3,183	564	586	489	17.1	18.3	15.4
Northern Region	13,268	13,205	12,770	1,348	1,377	1,233	10.2	10.4	9.7
Nome Census Area	4,285	4,234	4,120	536	534	487	12.5	12.6	11.8
North Slope Borough	5,767	5,739	5,615	249	258	277	4.3	4.5	4.9
Northwest Arctic Borough	3,216	3,232	3,035	563	585	469	17.5	18.1	15.5
Southeast Region	37,493	37,274	37,321	3,103	3,301	2,775	8.3	8.9	7.4
Haines Borough	1,183	1,095	1,174	140	149	121	11.8	13.6	10.3
Hoonah-Angoon Census Area	919	901	877	236	237	193	25.7	26.3	22.0
Juneau, City and Borough of	17,861	17,875	17,862	969	990	884	5.4	5.5	4.9
Ketchikan Gateway Borough	7,398	7,407	7,389	613	646	571	8.3	8.7	7.7
Petersburg Census Area	1,551	1,506	1,553	193	182	192	12.4	12.1	12.4
Prince of Wales-Hyder Census Area	2,375	2,366	2,256	439	478	316	18.5	20.2	14.0
Sitka, City and Borough of	4,429	4,318	4,440	260	305	256	5.9	7.1	5.8
Skagway, Municipality of	560	571	542	122	146	103	21.8	25.6	19.0
Wrangell, City and Borough of	984	996	993	100	134	107	10.2	13.5	10.8
Yakutat, City and Borough of	233	239	235	31	34	32	13.3	14.2	13.6
Southwest Region	19,562	19,637	19,305	2,701	2,735	2,457	13.8	13.9	12.7
Aleutians East Borough	1,333	1,346	1,338	108	116	116	8.1	8.6	8.7
Aleutians West Census Area	4,324	4,445	4,334	208	227	217	4.8	5.1	5.0
Bethel Census Area	7,385	7,337	7,271	1,250	1,265	1,137	16.9	17.2	15.6
Bristol Bay Borough	477	476	474	45	53	42	9.4	11.1	8.9
Dillingham Census Area	2,133	2,130	2,109	226	218	211	10.6	10.2	10.0
Lake and Peninsula Borough	990	1,002	975	112	115	97	11.3	11.5	9.9
Wade Hampton Census Area	2,920	2,901	2,804	752	741	637	25.8	25.5	22.7

P = Preliminary. As more information becomes available, data are revised every month for the previous month and again at the end of every calendar year.

Note: The official definition of unemployment excludes anyone who has not made an active attempt to find work in the four-week period up to and including the week that includes the 12th of the reference month. Many in rural Alaska do not meet the definition because they have not conducted an active job search due to the scarcity of employment opportunities.

¹Unemployment rates that are not seasonally adjusted should not be compared with those that are.

Source: Alaska Department of Labor and Workforce Development, Research and Analysis Section; and U.S. Bureau of Labor Statistics

