



AEDDC  
Anchorage Economic  
Development Corporation

# Anchorage Employment Report

September 2014

Sponsored by:



**First National Bank**  
**A L A S K A**  
MEMBER FDIC

# 4.9%

September Unemployment  
Rate for Anchorage

# EXECUTIVE SUMMARY

## MONTHLY UNEMPLOYMENT

**The not seasonally adjusted unemployment rate for Anchorage in September was 4.9 percent, down 0.4 percent from August's revised rate.** This is well below the national rate of 5.7 percent and the statewide rate of 5.9 percent. This decrease continues the trend in 2014 - following the 2013 ebb and flow of employment in Anchorage which is expected to continue throughout the remainder of the year. Current indications are that the annual unemployment rate for Anchorage for 2014 will be slightly higher than 2013 at 5.1 percent. *As always, it should be noted that these are preliminary survey figures for September and will be revised next month.*

## YEAR-TO-DATE UNEMPLOYMENT

The average year-to-date (YTD) non-seasonally adjusted unemployment rate in Anchorage was 5.2 percent at the end of September, which is the same level as this time in 2013. An increase of 650 in the employment total and 765 in the Anchorage labor force during the YTD period has resulted in the reported unemployment total increasing by 115. The total number of unemployed people in Anchorage for the month of September is estimated at 7,627 (those actively looking for jobs), 358 more than September 2013. In the Mat-Su Borough, the YTD average monthly unemployment rate is unchanged from 2013 YTD, and in the Kenai Peninsula Borough, the rate is down 0.1 percent over the same period (see the charts at the end of this report for more details).

*It is important to note that these Anchorage unemployment numbers represent the labor force residing in Anchorage, and does not describe the number of filled positions in Anchorage. The industry employment estimates referenced in the remainder of this report are representative of the number of jobs in the Municipality of Anchorage, regardless of the job holder's place of residency. This is important to note, especially this month, as Anchorage's employment total has gone down, while total jobs (as noted in the next section) have increased.*

## ANCHORAGE INDUSTRY EMPLOYMENT ESTIMATES

As for Anchorage industry employment estimates, which includes total jobs in Anchorage held by city residents and commuters, the YTD average is continuing to show improvement over 2013 with a net increase of 411 jobs so far. **The private sector (total jobs minus government jobs) has grown by 1,033 jobs during this time, equaling a growth rate of 0.8 percent.** Government employment has declined by 622 jobs so far, with losses split between federal and local education employment. State government positions have increased by 11 over the same period.

**In the goods producing category, the Mining & Logging industry (which includes Oil & Gas employment) continues to show the largest YTD growth,** while service providing industries such as Information, Trade/Transportation/Utilities and Leisure & Hospitality are also showing strong growth. Seven of the ten major industries' September 2014 averages are at or above September 2013 totals, indicating sustained growth in many fields.

**Overall, Anchorage's employment statistics are strong. September's jobs total of 160,600 is the highest total for the month on record. The monthly decline of total jobs that occurs each year between August and December has started at a slower rate this year, suggesting that this year's gains are here to stay.** Coupled with the low YTD unemployment rate, Anchorage's labor market is typical of a "full employment" environment.

# EXECUTIVE SUMMARY CONT.

## MONTHLY REVISIONS

Each month, the Alaska Department of Labor's Research and Analysis Division revises the previous month employment numbers based on the availability of newer or late arriving data. The following tables show the revision changes in Anchorage's and Alaska's August job totals by industry.

Most adjustments are relatively minor, however, some changes do occur which are significant. Changes such as these are normally the result of rounding errors, job classification modifications, sample size or modeling issues, or errors within the industry. For example, the large revision in Local Education employment for August was the result of an imputation error:

### AUGUST 2014 REVISIONS, ANCHORAGE

<i>Industry</i>	<i>Preliminary Total</i>	<i>Revised Total</i>	<i>Net Change</i>
Total Nonfarm	162,600	162,500	-100
Goods Producing	16,500	16,600	+100
Services Providing	146,000	145,900	-100
Construction	10,300	10,400	+100
Information	4,000	3,900	-100
Financial Activities	7,700	7,500	-200
Professional & Business Services	21,700	21,800	+100
Health Care	18,600	18,500	-100
Accommodation	3,400	3,300	-100
Government	28,900	29,000	+100
Local Government	10,100	10,200	+100
Local Education	4,200	7,400	+3,200

### AUGUST 2014 REVISIONS, ALASKA

<i>Industry</i>	<i>Preliminary Total</i>	<i>Revised Total</i>	<i>Net Change</i>
Total Nonfarm	357,700	357,200	-500
Services Providing	295,200	294,700	-500
Oil & Gas	15,000	15,100	+100
Construction	19,700	19,600	-100
Manufacturing	23,400	23,500	+100
Trade, Transportation, Utilities	71,000	70,900	-100
Wholesale Trade	6,800	6,700	-100
General Merchandise Stores	10,800	10,700	-100
Financial Activities	12,400	12,300	-100
Educational & Health Services	47,100	46,500	-600
Health Care	34,000	33,900	-100
Leisure & Hospitality	38,300	38,500	+200
Accommodation	9,500	9,600	+100
Other Services	11,400	11,500	+100

# GOODS PRODUCING JOBS

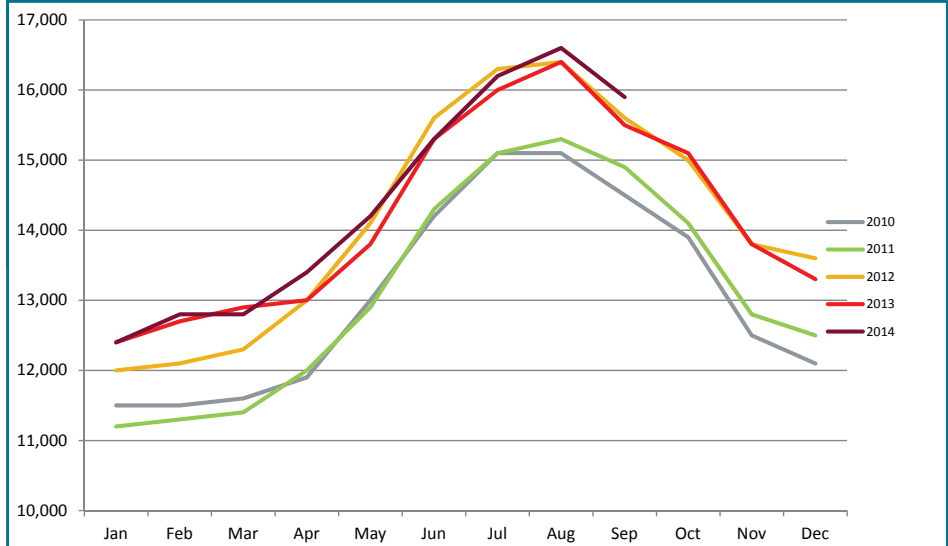
## CONSTRUCTION WORK, MINING, OIL & GAS PRODUCTION, MANUFACTURING

Growth in the number of goods producing jobs (those jobs that are specifically tied to production, not those which support the production or maintenance of the production jobs) had peaked in August and is now into its annual decline into next January. However, **on a YTD basis, the industry is showing positive gains of 178 jobs.** September's total of 160,600 is 300 jobs more than September 2013. An increase of 144 jobs in the mining & logging industry (which includes oil & gas employment) has been the largest contributing factor of the year's gains. YTD construction employment growth has also continued to grow and is now 133 jobs higher than 2013 YTD.

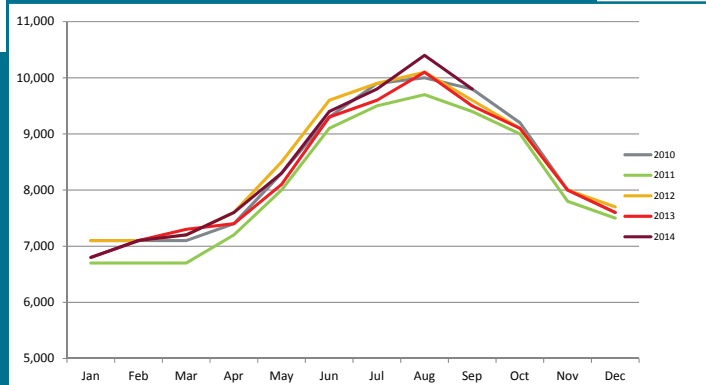
The oil & gas sector has gained 122 jobs so far this year; with a solid growth rate of 3.58 percent. **As noted in AEDC's 2014 Resource Extraction Report, the increasingly stable tax and regulatory environment in Alaska is providing cautious optimism for continuing development of established fields,** which we hope will translate into more long term jobs for the industry.

The construction industry, as noted earlier, is maintaining its YTD job growth over the 2013 YTD total. September's monthly estimate of 9,800 is up 300 jobs from September 2013 and is showing an YTD growth of 1.6 percent over 2013 YTD. The monthly job totals are following the expected decline for the next winter months, with December's estimate at around 7,700. It appears that a number of building projects in Anchorage are extending later than expected and many construction laborers may be working later into the winter than usual.

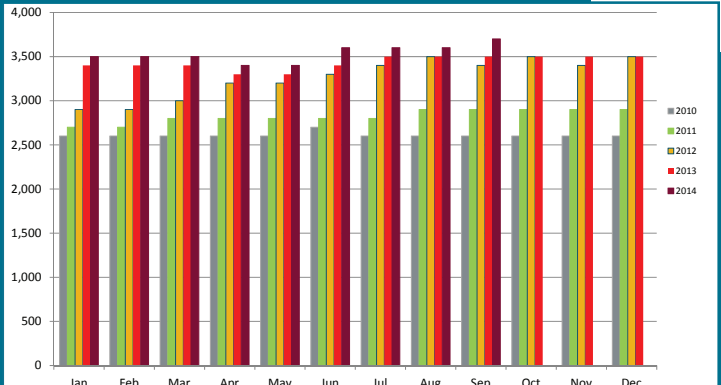
**GOODS PRODUCING JOBS**  
Municipality of Anchorage 2010-Present



**CONSTRUCTION EMPLOYMENT**  
Municipality of Anchorage 2010-Present



**OIL & GAS EMPLOYMENT**  
Municipality of Anchorage 2010-Present



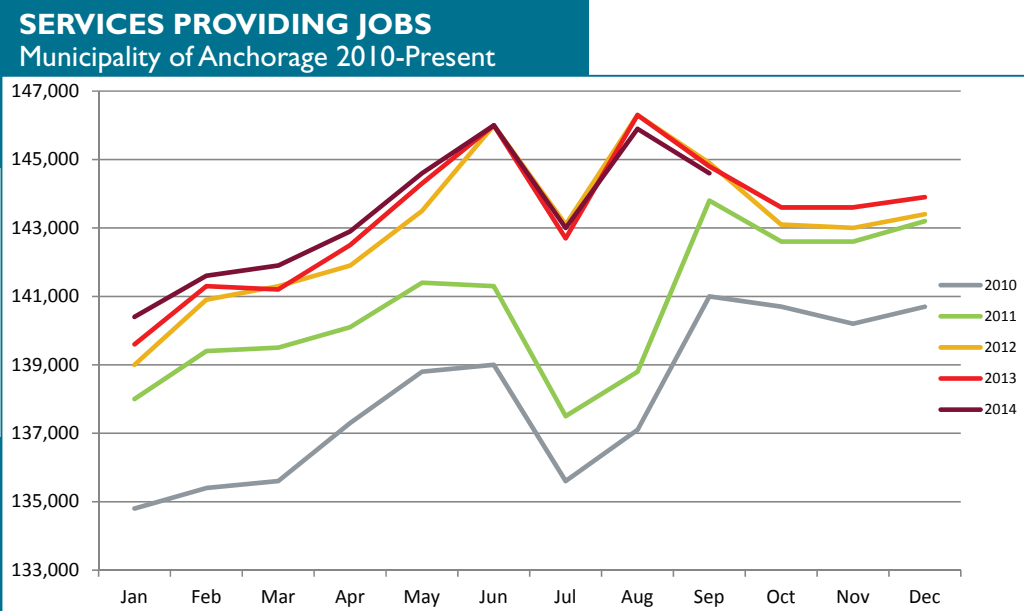
# SERVICES PROVIDING JOBS

ENGINEERING, RETAIL, TOURISM, HEALTH CARE, ETC.

Services providing jobs in Anchorage totaled 144,600 for September. Overall, the YTD average is up 244 jobs from 2013 YTD.

**The information industry's growth rate is 2.02 percent so far this year, and is maintaining its position as the highest growth area in the service sector.** The annual employment average in this industry is expected to end the year just under 4,000. The information industry is still on track to end the year with more growth than any year over the past decade. **Retail trade jobs are still growing strong, adding 578 positions YTD compared to 2013 YTD, by far the largest numerical growth of any sector.** A number of recruitment sessions and job fairs at local shopping centers have occurred in the past few months, indicating a strong hiring season for the holidays and continuing growth in the retail sector. The trade/transportation/utilities industry is also seeing significant growth, with the YTD job growth rate at 1.28 percent.

The state government jobs monthly average is up 11 jobs YTD from 2013 due to YTD growth of 89 in state education positions. Federal and local government sectors are both averaging less than this point last year (-322 and -311, respectively). Local government employment has rebounded and is holding steady after the traditional July drop during the school district's summer break, but is still 200 jobs less than September 2013. Uncertainty in the State's revenue picture in the near future makes it unlikely that there will be a significant increase in state government jobs, and a similar outlook holds at the local level as well.



Increase of Services Providing Jobs  
**+244**  
 2013 vs. 2014 YTD Change

---

**143,430**  
 Services Providing Jobs in Anchorage (YTD avg.)

SEPT 13 vs. SEPT 14  
 YEAR TO DATE CHANGE

Retail

**+575**

Professional & Business Services

**+175**

Information

**+75**

Leisure & Hospitality

**+190**

Educational & Health Services

**+130**

Government

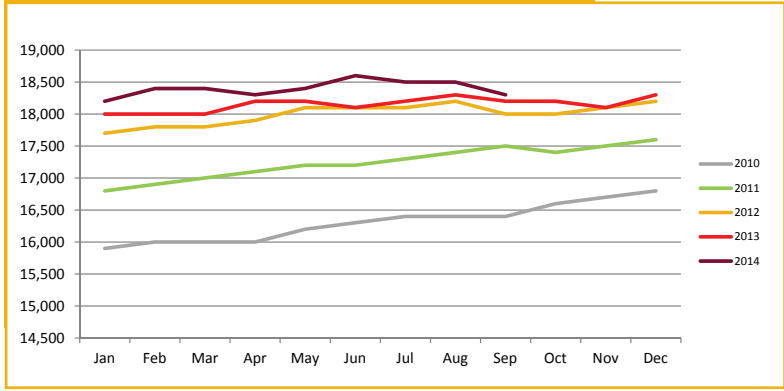
**-620**

# ••••• SERVICES PROVIDING JOBS SUMMARY

## HEALTH CARE EMPLOYMENT

**Employment in the health care sector is still doing well, with 267 more jobs over 2013 YTD.** The 1.47 percent YTD job growth in the local health care sector is nearly twice the 2013 end of year rate, and is still one of the fastest growing service producing industries. **We are confident that this sector will meet AEDC's January projection of 250 additional health care jobs by the end of the year.**

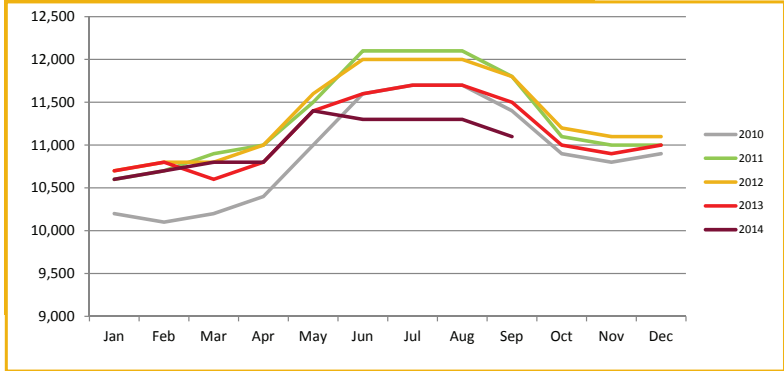
**HEALTH CARE EMPLOYMENT**  
Municipality of Anchorage 2010-Present



## TRANSPORTATION

**Monthly estimates in this industry continue to lag behind 2013, with September's estimate of 11,100 jobs being 400 lower than September 2013.** The YTD average for 2014 is down by 167 over last year. The usual summer increase in these jobs did not occur this year and monthly estimates have been flat or declining since May. While air cargo numbers from Ted Stevens Anchorage International Airport have been mixed for the first two quarters of the year, the Alaska Railroad's freight tonnage totals are showing some improvement over last year. It remains to be seen if these employment declines will level off or continue through the remainder of the year.

**TRANSPORTATION EMPLOYMENT**  
Municipality of Anchorage 2010-Present

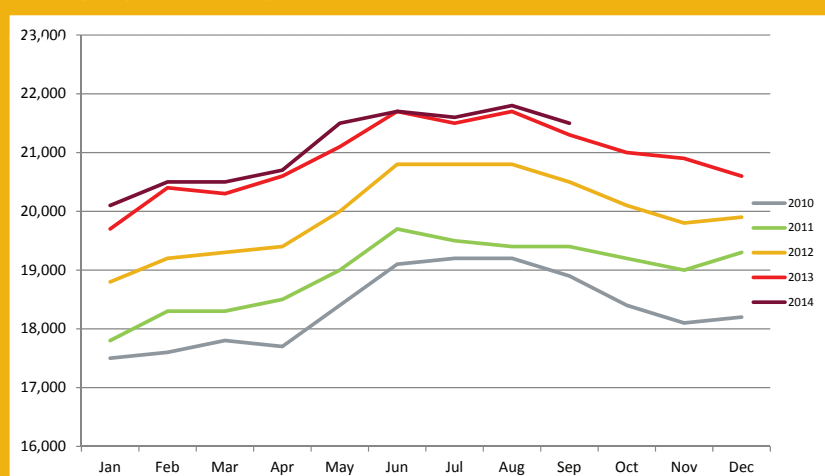


## PROFESSIONAL & BUSINESS SERVICES

ENGINEERING, ARCHITECTURE, LEGAL SERVICES, ACCOUNTING, SCIENTIFIC RESEARCH, WASTE MANAGEMENT & ADMINISTRATIVE SERVICES

**The YTD average for this industry continues to show improvement and is up 178 jobs from 2013 YTD.** The rate of increase in jobs is one of the largest of all service providing industries at 0.85 percent. Job growth within professional and business services is often tied to growth in other industries such as oil & gas and construction. The YTD trends in these other industries have begun to show some improvement and there is increased optimism that this growth in the professional and business services industry is here to stay. Unfortunately, it is unlikely that this industry will see the job growth of 400 positions AEDC predicted in January.

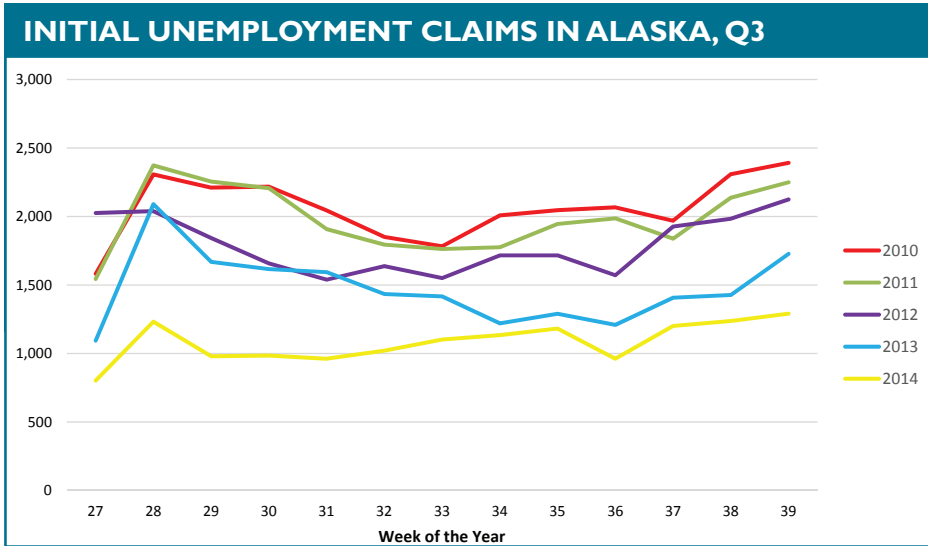
**PROFESSIONAL & BUSINESS SERVICES EMPLOYMENT**  
Municipality of Anchorage 2010-Present



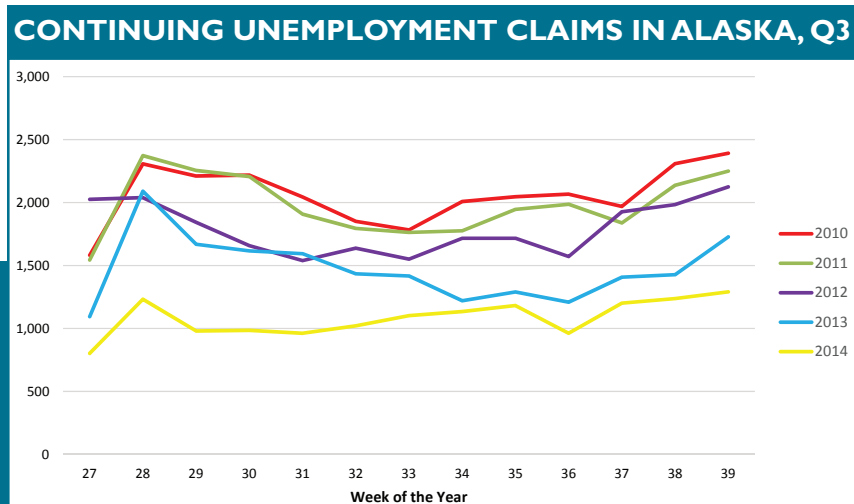
↑ Increase of Professional & Business Services Jobs  
**178** 2013 vs. 2014 YTD Change

# UNEMPLOYMENT CLAIMS

Initial unemployment claim applications can be interpreted as a proxy for layoffs. They tend to fall as job growth accelerates. Weekly totals for 2014 have been well below recent trends, and September's numbers have continued this movement. The typical spike in initial claims at the end of each quarter have been far smaller this year than in recent years and there is no indication that the third quarter in 2014 will end with a significant climb in filings. Since 2009, the weekly average in September has been 1,881. In 2014, September's weekly average has been 1,172. Alaska businesses are still retaining workers at a very high level, as they have all year. Job retention seems to be holding steady throughout the state, which is also being reflected in the ongoing drop in the state's unemployment rate.



Continuing claims figures help to show how well unemployed workers are re-entering the workforce. This total does not include workers receiving extended benefits from the federal government. 2014 numbers, similar to initial claims' figures, are showing significantly low levels. The total for the final week of September was 8,947, the lowest weekly total since 2008. Typically, claims begin to increase in September and plateau in January, but with no major negative economic impacts on the horizon, the severity of 2014 continuing claims' late season increases are expected to remain below recent years.



All data referenced in this employment report is from the State of Alaska, Dept. of Labor & Workforce Development website: [www.laborstats.alaska.gov](http://www.laborstats.alaska.gov) and from the U.S. Bureau of Labor Statistics: [www.bls.gov](http://www.bls.gov).

**Report compiled by Anchorage Economic Development Corp. Research Department.**

If you are interested in learning more about this data or are interested in how AEDC can help you develop a report, call AEDC at 907.258.3700.

AEDC, 510 L Street, Suite 603, Anchorage, AK 99501

# UNEMPLOYMENT ANALYSIS (YTD, 2014)

## Anchorage, Mat-Su, Kenai Peninsula Borough

	Jan	Feb	Mar	Apr	May	Jun	Jul	Aug	Sep	Oct	Nov	Dec	14 YTD Avg	13 YTD Avg	14 vs 13 (YTD)
<b>Municipality of Anchorage</b>															
Labor Force	157,114	156,019	156,912	155,578	156,599	157,324	155,570	154,102	154,999	154,999			156,024	155,259	765
Employment	148,838	147,203	148,385	147,911	149,081	148,563	147,692	145,936	147,372	147,372			147,887	147,237	650
Unemployment	8,276	8,816	8,527	7,667	7,518	8,761	7,878	8,166	7,627	7,627			8,137	8,023	115
Unemployment Rate	5.3%	5.7%	5.4%	4.9%	4.8%	5.6%	5.1%	5.3%	4.9%	4.9%			5.22%	5.17%	0.05%
<b>Mat-Su Borough</b>															
Labor Force	44,593	44,245	44,485	43,692	43,660	43,935	43,507	42,872	42,991	42,991			43,776	43,601	174
Employment	40,810	40,362	40,686	40,556	40,877	40,735	40,496	40,015	40,408	40,408			40,549	40,371	178
Unemployment	3,783	3,883	3,799	3,136	2,783	3,200	3,011	2,857	2,583	2,583			3,226	3,230	(4)
Unemployment Rate	8.5%	8.8%	8.5%	7.2%	6.4%	7.3%	6.9%	6.7%	6.0%	6.0%			7.37%	7.41%	-0.04%
<b>Kenai Peninsula Borough</b>															
Labor Force	27,419	27,434	27,406	27,735	29,221	30,256	30,536	30,043	28,491	28,491			28,727	28,254	473
Employment	25,022	24,947	24,999	25,645	27,357	28,157	28,630	28,070	26,589	26,589			26,602	26,131	471
Unemployment	2,397	2,487	2,407	2,090	1,864	2,099	1,906	1,973	1,902	1,902			2,125	2,123	2
Unemployment Rate	8.7%	9.1%	8.8%	7.5%	6.4%	6.9%	6.2%	6.6%	6.7%	6.7%			7.40%	7.51%	-0.12%
<b>Southeastern Region</b>															
Labor Force	229,126	227,698	228,803	227,005	229,480	231,515	229,613	227,017	226,481	226,481			228,526	227,115	1,412
Employment	214,670	212,512	214,070	214,112	217,315	217,455	216,818	214,021	214,369	214,369			215,038	213,739	1,299
Unemployment	14,456	15,186	14,733	12,893	12,165	14,060	12,795	12,996	12,112	12,112			13,488	13,375	113
Unemployment Rate	6.3%	6.7%	6.4%	5.7%	5.3%	6.1%	5.6%	5.7%	5.3%	5.3%			5.90%	5.89%	0.0%
<b>State of Alaska</b>															
Labor Force	362,147	362,081	363,566	360,434	367,044	373,799	376,645	371,881	367,686	367,686			367,254	365,159	2,095
Employment	335,399	334,280	336,922	337,253	345,026	348,673	353,787	348,872	346,170	346,170			342,931	340,989	1,942
Unemployment	26,748	27,801	26,644	23,181	22,018	25,126	22,858	23,009	21,516	21,516			24,322	24,170	153
Unemployment Rate	7.4%	7.7%	7.3%	6.4%	6.0%	6.7%	6.1%	6.2%	5.9%	5.9%			6.62%	6.62%	0.00%

\*Note: These numbers reflect employment, unemployment, etc. for only those people that are residence of the specified City/Region, thus are not inclusive of people who commute to another city for their jobs. (Ex: Someone lives in Wasilla but works in Anchorage. They would be counted in the Mat-Su Borough's labor force and employment numbers, not the Municipality of Anchorage numbers)



# INDUSTRY EMPLOYMENT ESTIMATES 2014

## Municipality of Anchorage

Industry	Jan	Feb	Mar	Apr	May	Jun	Jul	Aug	Sep	Oct	Nov	Dec	2014 YTD Avg.	2013 YTD Avg.	2014 vs 2013 YTD Change	% Change
	Revised	Revised	Revised	Revised	Revised	Revised	Revised	Revised	Preliminary							
Total Nonfarm	152,800	154,300	154,700	156,300	158,800	161,300	159,100	162,500	160,600				157,822	157,411	411	0.26%
Goods Producing	12,400	12,800	12,800	13,400	14,200	15,300	16,200	16,600	15,900				14,222	14,222	178	1.25%
Services Providing	140,400	141,600	141,900	142,900	144,600	146,000	143,000	145,900	144,600				143,433	143,189	244	0.17%
Mining and Logging <sup>2</sup>	3,700	3,700	3,600	3,600	3,600	3,800	3,800	3,800	3,900				3,722	3,578	144	4.04%
Oil & Gas	3,500	3,500	3,500	3,400	3,400	3,600	3,600	3,600	3,700				3,533	3,411	122	3.58%
Construction	6,800	7,100	7,200	7,600	8,300	9,400	9,800	10,400	9,800				8,489	8,356	133	1.60%
Manufacturing	1,900	2,000	2,000	2,100	2,300	2,100	2,500	2,400	2,200				2,167	2,256	-89	-3.94%
Trade/Transportation/Utilities	32,300	32,200	32,300	33,000	34,100	34,300	34,600	34,600	34,100				33,500	33,078	422	1.28%
Wholesale Trade	4,700	4,700	4,800	4,900	5,000	5,100	5,200	5,100	5,100				4,956	4,933	22	0.45%
Retail Trade	17,000	16,800	16,800	17,300	17,700	17,900	18,100	18,100	17,900				17,511	16,933	578	3.41%
Trans/Warehouse/Utilities	10,600	10,700	10,800	10,800	11,400	11,300	11,300	11,300	11,100				11,033	11,200	-167	-1.49%
Information	3,900	3,900	3,900	3,900	3,900	3,900	4,000	3,900	4,000				3,922	3,844	78	2.02%
Financial Activities	7,500	7,500	7,400	7,500	7,500	7,700	7,700	7,500	7,400				7,522	7,600	-78	-1.02%
Professional & Business Svcs	20,100	20,500	20,500	20,700	21,500	21,700	21,600	21,800	21,500				21,100	20,922	178	0.85%
Educational & Health Services	24,900	25,200	25,200	25,200	25,300	25,000	25,100	25,100	25,000				25,111	24,978	133	0.53%
Health Care	18,200	18,400	18,400	18,300	18,400	18,600	18,500	18,500	18,300				18,400	18,133	267	1.47%
Leisure & Hospitality	16,300	16,500	16,800	16,800	17,000	17,800	18,000	18,000	17,400				17,178	16,989	189	1.11%
Accommodation	3,100	3,100	3,200	3,100	3,100	3,300	3,300	3,300	3,200				3,189	3,244	-56	-1.71%
Food Svcs & Drinking Places	11,100	11,100	11,300	11,400	11,600	12,100	12,100	12,100	11,900				11,633	11,411	222	1.95%
Other Services	5,900	6,000	6,000	6,000	6,000	6,200	6,200	6,100	6,000				6,044	6,022	22	0.37%
Government	29,500	29,800	29,700	29,900	29,300	29,400	29,400	29,000	29,400				29,089	29,711	-622	-2.09%
Federal Government	8,500	8,500	8,400	8,400	8,500	8,500	8,500	8,400	8,400				8,456	8,778	-322	-3.67%
State Government	10,800	10,900	10,900	11,000	10,500	10,500	10,200	10,400	11,000				10,689	10,678	11	0.10%
State Education	2,800	3,000	3,000	3,000	2,400	2,100	2,000	2,200	2,800				2,589	2,500	89	3.56%
Local Government	10,200	10,400	10,400	10,500	10,400	10,400	7,100	10,200	10,000				9,956	10,267	-311	-3.03%
Local Education	7,400	7,600	7,500	7,700	7,600	7,500	4,200	7,400	7,200				7,122	7,467	-344	-4.61%

- Nonfarm Wage & Salary excludes self-employed workers, fishers, domestics, and unpaid family workers.

- All totals are seasonally non-adjusted totals.

- Government includes employees of public school systems and the University of Alaska.

- Beginning January 2001, wage and salary employment estimates were published under a new classification system. The Standard Industrial Classification system (SIC) has been replaced by the North American Industry Classification System (NAICS). Data prior to 2001 are comparable only at the Total Nonfarm and Government levels.

<sup>1/</sup> As of January 2001, certain federally-recognized tribal entities were moved to Local Government, which created a series break for Total Government and Local Government. Please see the April 2002 Alaska Economic Trends publication for a detailed explanation.

<sup>2/</sup> This category was called "Natural Resources and Mining" in previous years. The change is in name only; the industries it includes remain the same.

- Some totals may not equal components due to rounding.

- Source: Alaska Department of Labor and Workforce Development, Research and Analysis Section

**\* Note:** The above numbers are representative of all people employed in the Municipality of Anchorage, this is inclusive of workers who claim residence outside of the Municipality of Anchorage. (Ex: someone who lives in the Mat-Su, but works in Anchorage would be included in these number)

### Quick Comparisons

14 vs 13	2014 vs 2013	% Change
September	300	0.19%
14 vs 13	567	0.37%
1st Qtr	500	0.32%
14 vs 13 2nd Qtr	167	0.10%
14 vs 13 3rd Qtr	-	-
14 vs 13 4th Qtr	-	-

# INDUSTRY EMPLOYMENT ESTIMATES 2014

## State of Alaska

Industry	Jan	Feb	Mar	Apr	May	Jun	Jul	Aug	Sep	Oct	Nov	Dec	2014 YTD Avg.	2013 YTD Avg.	2014 vs 2013 YTD Change	% Change
	Revised	Revised	Revised	Revised	Revised	Revised	Revised	Revised	Preliminary							
Total Nonfarm	317,300	322,300	325,500	329,000	338,700	353,500	359,000	357,200	349,600				339,122	339,100	22	0.01%
Goods Producing	43,600	45,500	46,100	46,400	47,600	56,100	65,600	62,500	55,700				52,122	49,867	2,256	4.52%
Services Providing	273,700	276,800	279,400	282,600	291,100	297,400	293,400	294,700	293,900				287,000	289,233	-2,233	-0.77%
Mining and Logging <sup>2</sup>	17,000	17,200	17,500	17,900	18,300	19,000	19,400	19,400	19,100				18,311	17,478	833	4.77%
Mining	16,900	17,000	17,200	17,400	17,700	18,400	18,700	18,800	18,600				17,856	17,222	633	3.68%
Oil & Gas	14,200	14,200	14,300	14,400	14,500	14,800	15,000	15,100	15,000				14,611	14,100	511	3.62%
Construction	14,400	14,200	14,400	15,100	16,400	18,000	18,800	19,600	18,700				16,622	16,578	44	0.27%
Manufacturing	12,200	14,100	14,200	13,400	12,900	19,100	27,400	23,500	17,900				17,189	15,811	1,378	8.71%
Seafood Processing	8,700	10,500	10,600	9,800	8,600	14,600	22,400	18,700	13,300				13,022	12,022	1,000	8.32%
Trade/Transportation/Utilities	60,500	60,800	61,300	62,800	68,100	70,100	71,000	70,900	68,600				66,011	64,478	1,533	2.38%
Wholesale Trade	6,300	6,400	6,400	6,500	6,600	6,700	6,800	6,700	6,600				6,556	6,622	-67	-1.01%
Retail Trade	35,100	34,900	35,200	36,000	37,900	39,200	39,600	39,400	38,400				37,300	35,856	1,444	4.03%
Food & Beverage Stores	6,200	6,400	6,400	6,400	6,700	7,000	7,300	7,300	6,900				6,733	6,144	589	9.58%
General Merchandise Stores	9,900	9,700	9,700	9,900	10,200	10,600	10,800	10,700	10,600				10,233	9,744	489	5.02%
Trans/Warehouse/Utilities	19,100	19,500	19,700	20,300	23,600	24,200	24,600	24,800	23,600				22,156	22,000	156	0.71%
Air Transportation	5,500	5,500	5,700	5,800	6,500	6,800	6,900	6,900	6,700				6,256	5,933	322	5.43%
Information	6,200	6,200	6,200	6,100	6,200	6,300	6,200	6,100	6,200				6,189	6,133	56	0.91%
Telecommunications	4,100	4,100	4,100	4,100	4,100	4,100	4,100	4,000	4,000				4,078	4,056	22	0.55%
Financial Activities	11,800	11,700	11,600	11,600	11,700	12,200	12,500	12,300	12,400				11,933	12,244	-311	-2.54%
Professional & Business Svcs	28,200	28,100	28,600	29,200	30,000	30,900	31,000	31,500	31,100				29,844	30,367	-522	-1.72%
Educational & Health Services	47,100	47,500	47,600	47,200	47,100	46,300	46,000	46,500	46,600				46,878	47,100	-222	-0.47%
Health Care	33,600	33,700	33,900	33,500	33,600	33,900	33,700	33,900	33,500				33,700	33,544	156	0.46%
Leisure & Hospitality	28,500	28,600	29,900	30,600	33,300	37,800	38,800	38,500	35,800				33,511	34,678	-1,167	-3.36%
Accommodation	6,100	5,900	6,000	6,200	7,100	9,100	9,600	9,600	8,600				7,578	8,667	-1,089	-12.56%
Food Svcs & Drinking Places	18,500	18,600	19,500	19,900	21,300	23,100	23,100	23,200	22,400				21,067	20,933	133	0.64%
Other Services	11,400	11,100	11,300	11,400	11,500	11,500	11,700	11,500	11,600				11,444	11,756	-311	-2.65%
Government	80,000	82,800	82,900	83,700	83,200	82,300	76,400	77,400	82,000				81,189	82,478	-1,289	-1.56%
Federal Government	14,500	14,500	14,600	14,900	15,200	15,500	15,500	15,300	15,000				15,000	15,667	-667	-4.26%
State Government	24,700	26,600	26,800	27,000	26,100	25,300	24,700	25,200	26,400				25,867	26,156	-289	-1.10%
State Education	6,600	8,600	8,600	8,700	7,600	6,200	6,000	6,500	8,200				7,444	7,544	-100	-1.33%
Local Government	40,800	41,700	41,500	41,800	41,900	41,500	36,200	36,900	40,600				40,322	40,656	-333	-0.82%
Local Education	22,900	23,800	23,600	23,900	23,500	22,300	17,100	18,300	22,900				22,033	22,544	-511	-2.27%
Tribal Government <sup>1</sup>	3,600	3,500	3,500	3,500	3,900	4,200	4,400	4,500	4,200				3,922	3,644	278	7.62%

- Nonfarm Wage & Salary excludes self-employed workers, fishers, domestics, and unpaid family workers.

- All totals are non-seasonally adjusted totals.

- Government includes employees of public school systems and the University of Alaska.

- Beginning January 2001, wage and salary employment estimates were published under a new classification system. The Standard Industrial Classification system (SIC) has been replaced by the North American Industry Classification System (NAICS). Data prior to 2001 are comparable only at the Total Nonfarm and Government levels.

<sup>1/</sup> As of January 2001, certain federally-recognized tribal entities were moved to Local Government, which created a series break for Total Government and Local Government. Please see the April 2002 Alaska Economic Trends publication for a detailed explanation.

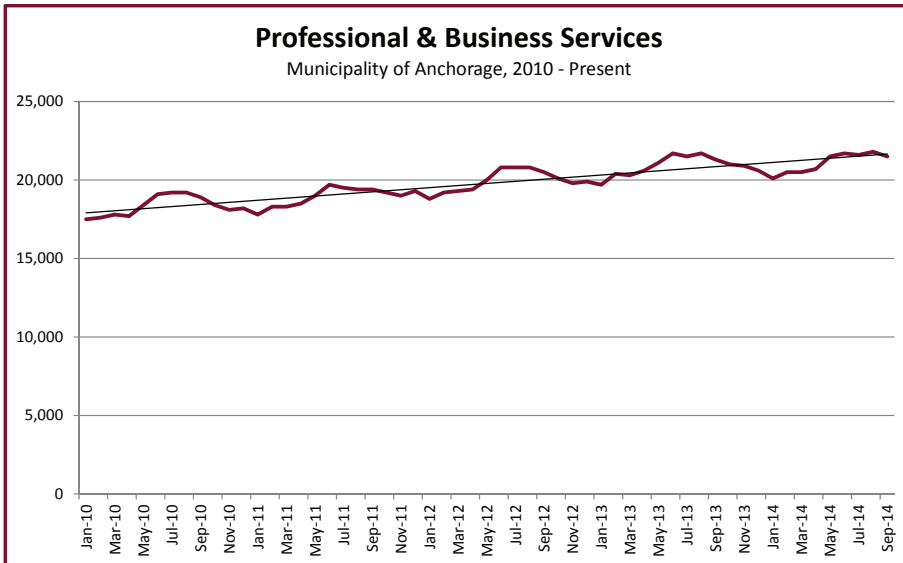
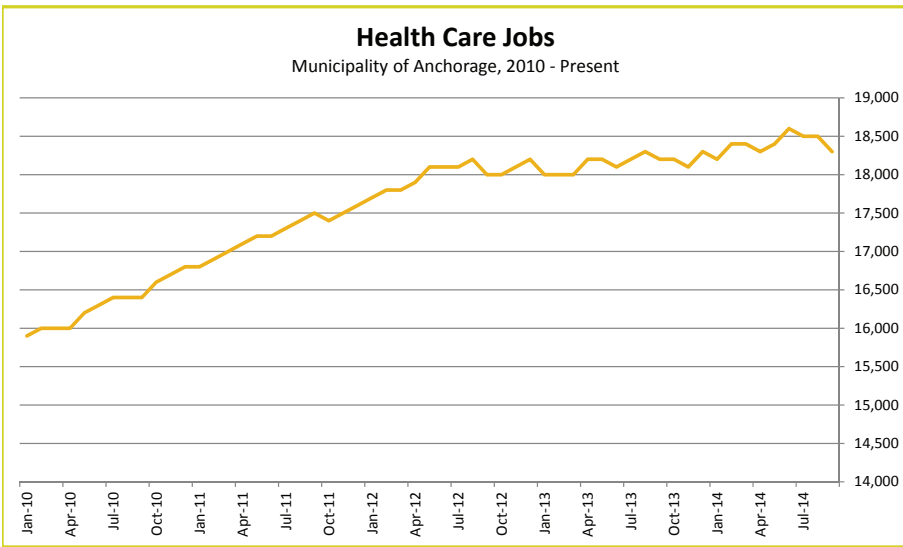
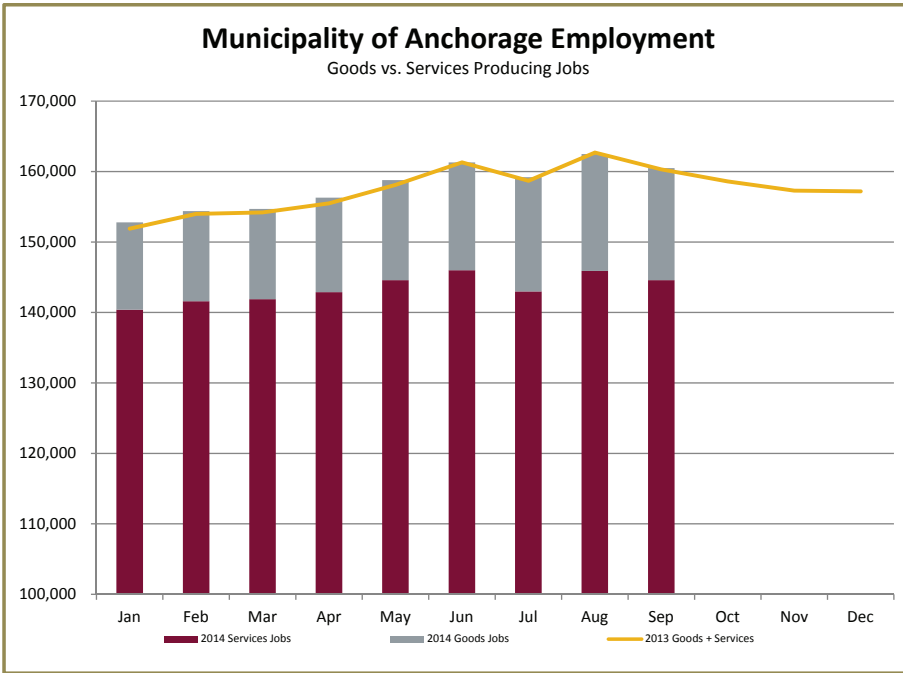
<sup>2/</sup> This category was called "Natural Resources and Mining" in previous years. The change is in name only; the industries it includes remain the same.

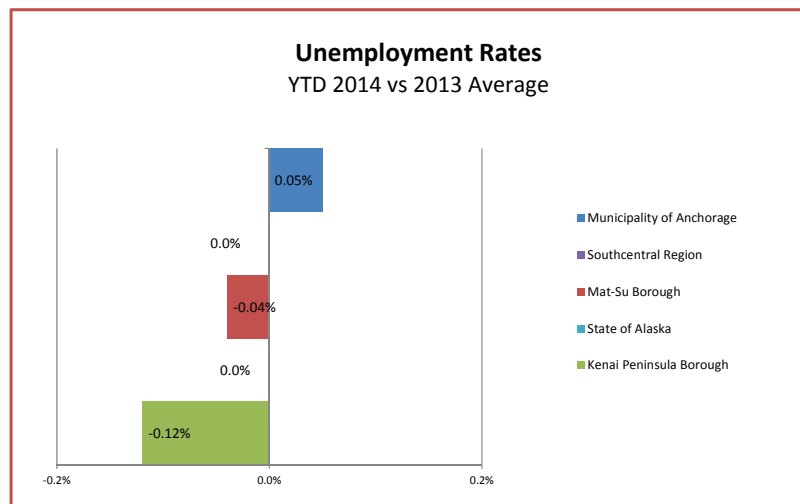
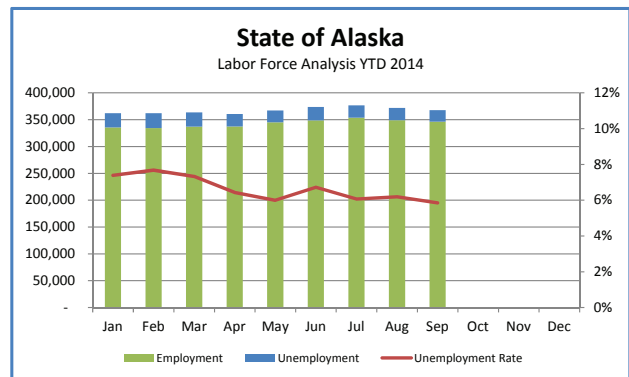
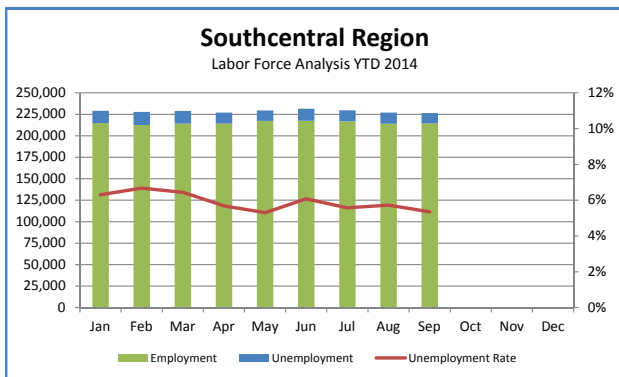
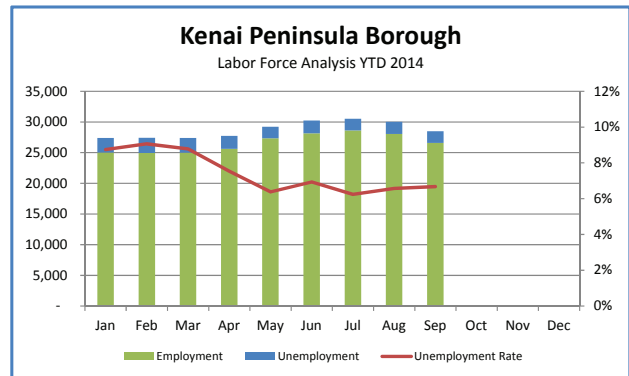
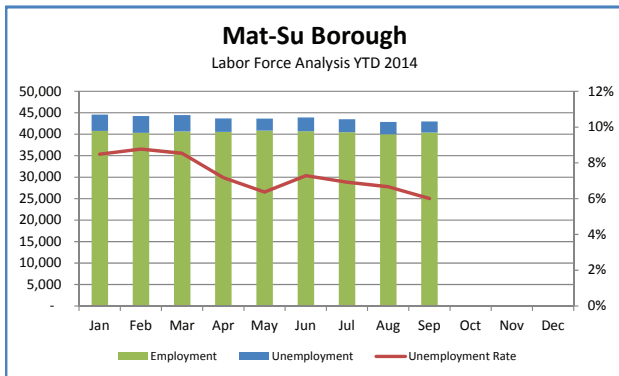
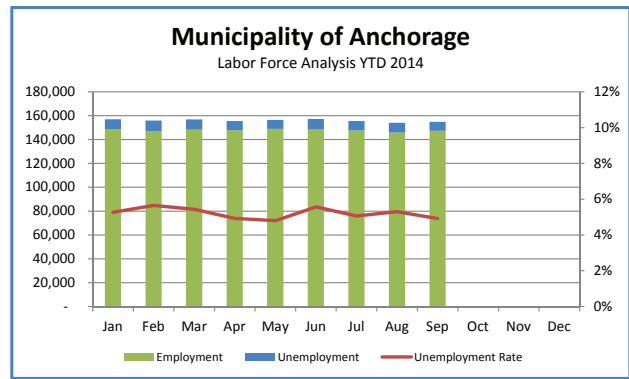
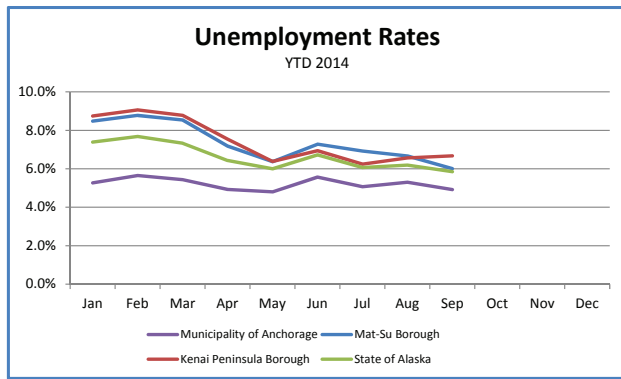
- Totals may not equal sub-sections due to rounding.

- Source: Alaska Department of Labor and Workforce Development, Research and Analysis Section

Quick Comparisons	
14 vs 13 Sept.	-1,200 -0.34%
14 vs 13 1st Qtr	1,600 0.50%
14 vs 13 2nd Qtr	-300 -0.09%
14 vs 13 3rd Qtr.	-1,233 -0.35%
14 vs 13 4th Qtr	278 7.62%

# ADDITIONAL CHARTS





## Press Release

COMMISSIONER'S OFFICE

October 17, 2014

No. 14-42

### Unemployment rate at 6.8 percent in September

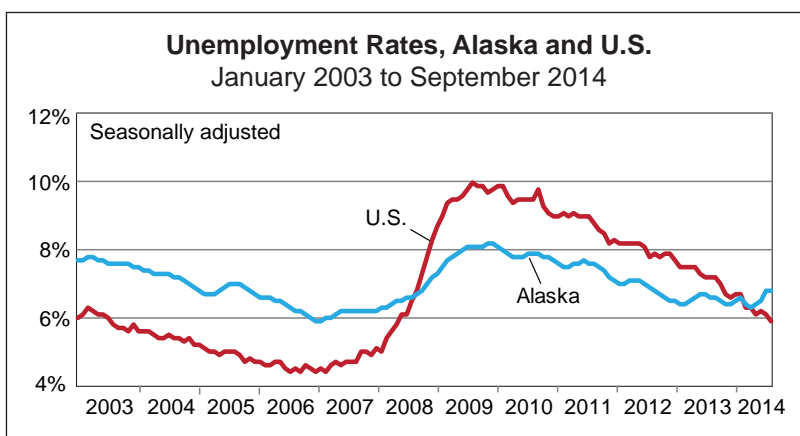
Alaska's seasonally adjusted unemployment rate was 6.8 percent in September, unchanged from August. The comparable national rate was 5.9 percent.

Alaska's not-seasonally adjusted jobless rate was 5.9 percent in September, down from August's 6.2 percent. The lowest rate in the year typically falls in September, as school resumes and summer economic activity hasn't fully tapered off.

Around the state, unadjusted rates fell in 17 of 29 boroughs and census areas. The 12 with increasing or flat rates are smaller areas where the beginning of the school year wasn't enough to compensate for slowing, heavily seasonal industries such as tourism or fishing.

The last cruise ships arrive in September, and the Municipality of Skagway's low rate of 1.7 percent reflected that. The highest rate was in the Wade Hampton Census Area at 20.5 percent.

**Contact: Neal Fried, Economist (907) 269-4861**  
Research and Analysis Web site: [laborstats.alaska.gov](http://laborstats.alaska.gov)



Unemployment Rates, Seasonally Adjusted			
	9/14	8/14	9/13
Alaska	6.8%	6.8%	6.6%
U.S.	5.9%	6.1%	7.2%

Sources for graph and table: Alaska Department of Labor and Workforce Development, Research and Analysis Section; and U.S. Bureau of Labor Statistics

For detailed employment estimates, see <http://live.laborstats.alaska.gov/ces/>. The estimates are preliminary and subject to potentially large revisions.

## Labor Force by Borough and Census Area, Not Seasonally Adjusted<sup>1</sup>

	Civilian Labor Force			Unemployed					
	9/14 <sup>P</sup>	8/14	9/13	Number			Rate		
				9/14 <sup>P</sup>	8/14	9/13	9/14 <sup>P</sup>	8/14	9/13
<b>Alaska</b>	<b>367,686</b>	<b>371,881</b>	<b>365,250</b>	<b>21,516</b>	<b>23,009</b>	<b>21,287</b>	<b>5.9</b>	<b>6.2</b>	<b>5.8</b>
<b>Anchorage/Mat-Su Region</b>	<b>197,990</b>	<b>196,974</b>	<b>196,569</b>	<b>10,210</b>	<b>11,023</b>	<b>9,949</b>	<b>5.2</b>	<b>5.6</b>	<b>5.1</b>
Anchorage, Municipality of	154,999	154,102	153,730	7,627	8,166	7,269	4.9	5.3	4.7
Matanuska-Susitna Borough	42,991	42,872	42,839	2,583	2,857	2,680	6.0	6.7	6.3
<b>Gulf Coast Region</b>	<b>41,361</b>	<b>43,478</b>	<b>40,847</b>	<b>2,547</b>	<b>2,685</b>	<b>2,536</b>	<b>6.2</b>	<b>6.2</b>	<b>6.2</b>
Kenai Peninsula Borough	28,491	30,043	28,078	1,902	1,973	1,854	6.7	6.6	6.6
Kodiak Island Borough	7,092	7,096	7,031	289	341	302	4.1	4.8	4.3
Valdez-Cordova Census Area	5,778	6,339	5,738	356	371	380	6.2	5.9	6.6
<b>Interior Region</b>	<b>54,872</b>	<b>55,164</b>	<b>54,522</b>	<b>3,141</b>	<b>3,334</b>	<b>3,120</b>	<b>5.7</b>	<b>6.0</b>	<b>5.7</b>
Denali Borough	2,173	2,515	2,175	71	73	86	3.3	2.9	4.0
Fairbanks North Star Borough	46,299	46,084	45,951	2,329	2,518	2,293	5.0	5.5	5.0
Southeast Fairbanks Census Area	3,385	3,464	3,362	325	335	317	9.6	9.7	9.4
Yukon-Koyukuk Census Area	3,015	3,101	3,034	416	408	424	13.8	13.2	14.0
<b>Northern Region</b>	<b>12,663</b>	<b>12,741</b>	<b>12,676</b>	<b>1,149</b>	<b>1,241</b>	<b>1,220</b>	<b>9.1</b>	<b>9.7</b>	<b>9.6</b>
Nome Census Area	4,182	4,130	4,141	478	517	462	11.4	12.5	11.2
North Slope Borough	5,365	5,426	5,383	220	254	270	4.1	4.7	5.0
Northwest Arctic Borough	3,116	3,185	3,152	451	470	488	14.5	14.8	15.5
<b>Southeast Region</b>	<b>41,802</b>	<b>43,893</b>	<b>41,661</b>	<b>2,169</b>	<b>2,316</b>	<b>2,066</b>	<b>5.2</b>	<b>5.3</b>	<b>5.0</b>
Haines Borough	1,679	1,849	1,684	81	82	83	4.8	4.4	4.9
Hoonah-Angoon Census Area	1,507	1,648	1,493	143	151	134	9.5	9.2	9.0
Juneau, City and Borough of	18,096	18,446	18,064	749	819	744	4.1	4.4	4.1
Ketchikan Gateway Borough	8,883	9,455	8,825	454	465	395	5.1	4.9	4.5
Petersburg Census Area	1,833	1,868	1,802	157	142	124	8.6	7.6	6.9
Prince of Wales-Hyder Census Area	2,681	2,788	2,659	292	328	268	10.9	11.8	10.1
Sitka, City and Borough of	4,752	5,338	4,754	188	214	204	4.0	4.0	4.3
Skagway, Municipality of	889	971	894	15	12	23	1.7	1.2	2.6
Wrangell, City and Borough of	1,163	1,201	1,164	72	77	72	6.2	6.4	6.2
Yakutat, City and Borough of	319	329	322	18	26	19	5.6	7.9	5.9
<b>Southwest Region</b>	<b>18,996</b>	<b>19,631</b>	<b>18,973</b>	<b>2,301</b>	<b>2,409</b>	<b>2,396</b>	<b>12.1</b>	<b>12.3</b>	<b>12.6</b>
Aleutians East Borough	1,206	1,265	1,244	92	101	139	7.6	8.0	11.2
Aleutians West Census Area	2,968	3,060	3,016	172	186	244	5.8	6.1	8.1
Bethel Census Area	7,259	7,289	7,216	1,132	1,156	1,144	15.6	15.9	15.9
Bristol Bay Borough	1,258	1,561	1,249	34	32	33	2.7	2.0	2.6
Dillingham Census Area	2,084	2,452	2,060	196	208	184	9.4	8.5	8.9
Lake and Peninsula Borough	1,322	1,189	1,297	80	88	70	6.1	7.4	5.4
Wade Hampton Census Area	2,899	2,815	2,891	595	638	582	20.5	22.7	20.1

P = Preliminary. As more information becomes available, data are revised every month for the previous month and again at the end of every calendar year.

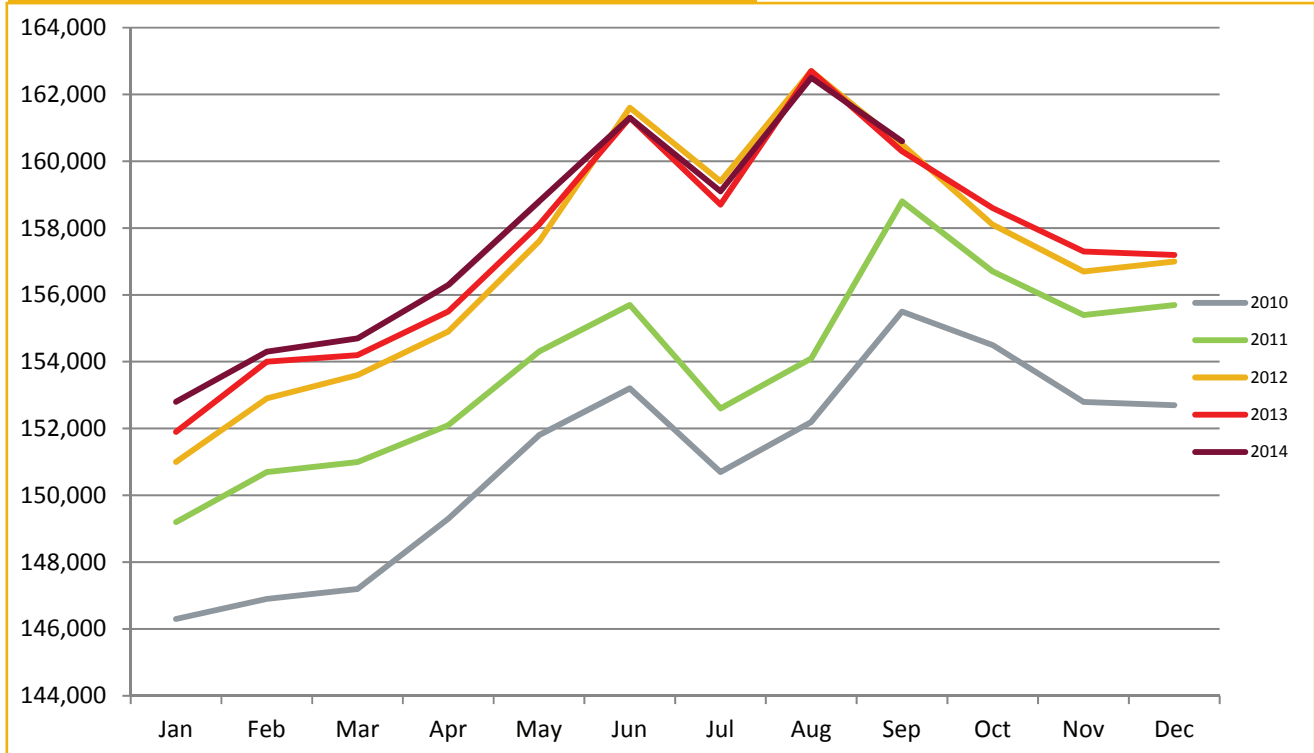
Note: The official definition of unemployment excludes anyone who has not made an active attempt to find work in the four-week period up to and including the week that includes the 12th of the reference month. Many in rural Alaska do not meet the definition because they have not conducted an active job search due to the scarcity of employment opportunities.

<sup>1</sup>Unemployment rates that are not seasonally adjusted should not be compared with those that are.

Source: Alaska Department of Labor and Workforce Development, Research and Analysis Section; and U.S. Bureau of Labor Statistics

# ANCHORAGE EMPLOYMENT

Municipality of Anchorage 2010-Present



# 4.9%

September Unemployment  
Rate for Anchorage

# 160,600

Total jobs in Anchorage  
September 2014 (preliminary)



**AEDC**  
Anchorage Economic  
Development Corporation