



**AEDDC**  
Anchorage Economic  
Development Corporation

# Anchorage Employment Report

October 2014

Sponsored by:



**First National Bank**  
**A L A S K A**  
MEMBER FDIC

# 4.7%

October Unemployment  
Rate for Anchorage



# EXECUTIVE SUMMARY CONT.

## MONTHLY REVISIONS

Each month, the Alaska Department of Labor's Research and Analysis Division revises the previous month employment numbers based on the availability of newer or late arriving data. The following tables show the revision changes in Anchorage's and Alaska's September job totals by industry.

Most adjustments are relatively minor, however, some changes do occur which are significant. Changes such as these are normally the result of rounding errors, job classification modifications, sample size or modeling issues, or errors within the industry.

<b>SEPTEMBER 2014 REVISIONS, ANCHORAGE</b>			
<i>Industry</i>	<i>Preliminary Total</i>	<i>Revised Total</i>	<i>Net Change</i>
Total Nonfarm	160,600	160,200	-400
Construction	9,800	9,700	-100
Manufacturing	2,200	2,300	+100
Services Providing	144,600	144,200	-400
Wholesale Trade	5,100	5,000	-100
Retail Trade	17,900	18,000	+100
Financial Activities	7,400	7,600	+200
Professional & Business Services	21,500	20,900	-600
Health Care	18,300	18,500	+200
Leisure & Hospitality	17,400	17,000	-400
Accommodation	3,200	3,100	-100
Food Service & Drinking Places	11,900	11,400	-500
Other Services	6,000	6,200	+200
Government	29,400	29,500	+100
State Government	11,000	11,100	+100
Local Government	10,000	10,100	+100
Local Education	7,200	7,300	+100
<b>SEPTEMBER 2014 REVISIONS, ALASKA</b>			
<i>Industry</i>	<i>Preliminary Total</i>	<i>Revised Total</i>	<i>Net Change</i>
Total Nonfarm	349,600	348,800	-800
Oil & Gas	15,000	14,900	-100
Construction	18,700	18,600	-100
Manufacturing	17,900	18,000	+100
Services Providing	293,900	293,100	-800
Trade/Transportation/Utilities	68,600	67,800	-800
Retail Trade	38,400	37,700	-700
Food & Beverage Stores	6,900	7,000	+100
Trade, Warehouse, Utilities	23,600	23,500	-100
Air Transportation	6,700	6,600	-100
Financial Activities	12,000	11,800	-200
Professional & Business Services	31,100	31,300	+200
Education & Health Services	46,600	46,800	+200
Leisure & Hospitality	35,800	35,500	-300
Accommodation	8,600	8,300	-300
Food Services & Drinking Places	22,400	22,100	-300
Government	82,000	82,100	+100
Federal Government	15,000	15,100	+100

# GOODS PRODUCING JOBS

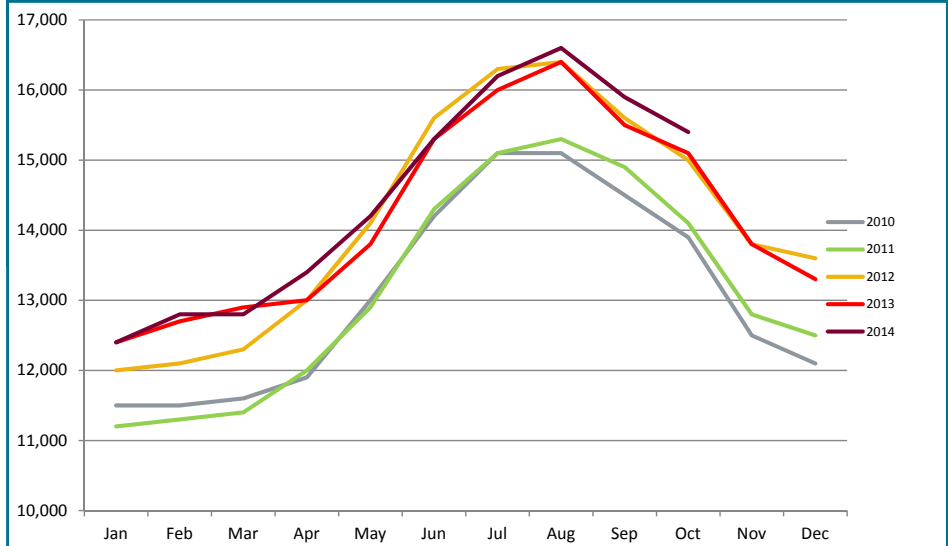
## CONSTRUCTION WORK, MINING, OIL & GAS PRODUCTION, MANUFACTURING

Growth in the number of goods producing jobs (those jobs that are specifically tied to production, not those which support the production or maintenance of the production jobs) had peaked in August and is now into its annual decline into next January. **However, on a YTD basis, the industry is showing positive gains of 190 jobs.** October's total of 15,400 is 300 jobs more than October 2013. An increase of 150 jobs in the mining & logging industry (which includes oil & gas employment) has been the largest contributing factor of the year's gains. YTD construction employment growth has also continued to grow and is now 130 jobs higher than 2013 YTD.

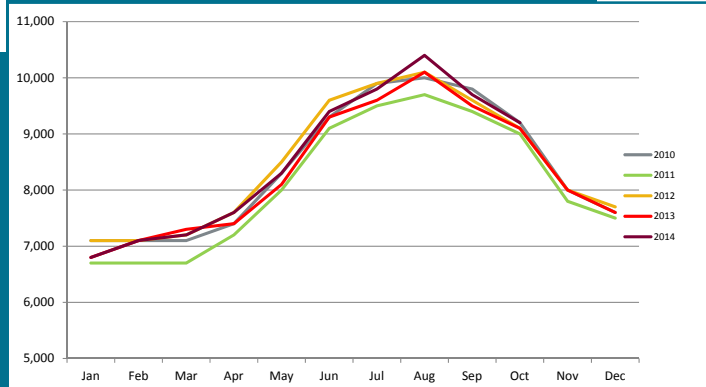
**The oil & gas sector has gained 130 jobs so far this year; with an extraordinary growth rate of 4.18 percent.** As noted in the AEDC 2014 Resource Extraction Report, the increasingly stable tax and regulatory environment in Alaska is providing cautious optimism for continuing development of established fields, which we hope will translate into more long term jobs for the industry.

The construction industry, as noted earlier, is maintaining its YTD job growth over the 2013 YTD total. October's monthly estimate of 9,200 is up 100 jobs from October 2013 and is showing a YTD growth of 1.42 percent over 2013 YTD. The monthly job totals are following the expected decline for the next winter months, with December's estimate at around 7,700. It appears that a number of building projects in Anchorage are extending later than expected and many construction laborers may be working later into the winter than usual.

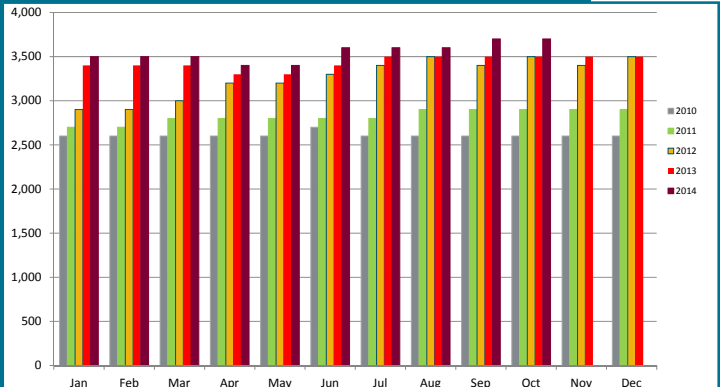
### GOODS PRODUCING JOBS Municipality of Anchorage 2010-Present



### CONSTRUCTION EMPLOYMENT Municipality of Anchorage 2010-Present



### OIL & GAS EMPLOYMENT Municipality of Anchorage 2010-Present



# SERVICES PROVIDING JOBS

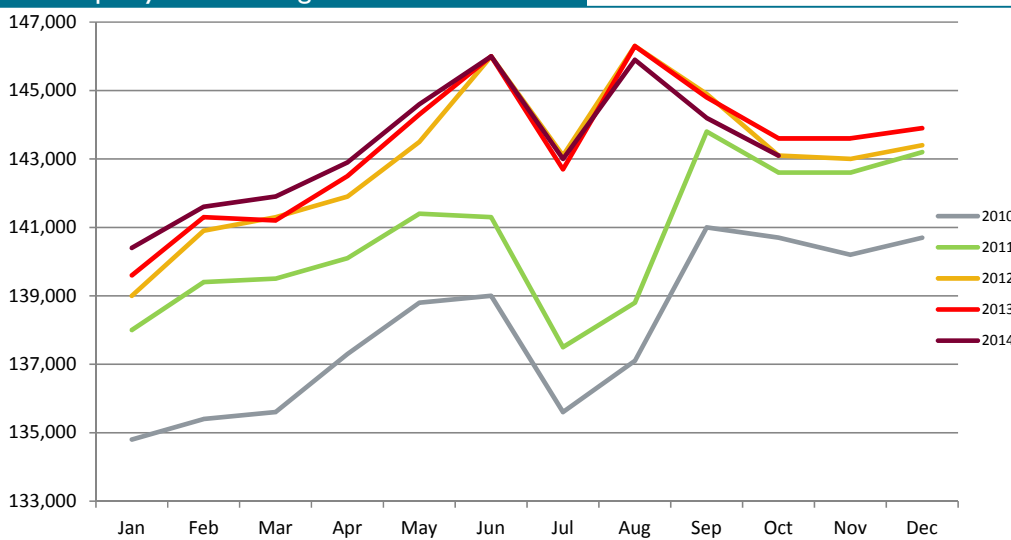
ENGINEERING, RETAIL, TOURISM, HEALTH CARE, ETC.

Services providing jobs in Anchorage totaled 143,100 for October. Overall, the YTD average is up 130 jobs from 2013 YTD.

**The information industry's growth rate is 1.82 percent so far this year, and is maintaining its position as the highest growth area in the service sector.** The annual employment average in this industry is expected to end the year just under 4,000. The information industry is still on track to end the year with more growth than any year over the past decade. **Retail trade jobs are still growing strong, adding 580 positions YTD compared to 2013 YTD, by far the largest numerical growth of any sector.** In the last ten years there's been an average job growth of 350 retail positions between October and December and it is estimated that this year will see at least a similar growth. The trade/transportation/utilities industry is also seeing significant increases, with the YTD job growth rate at 1.18 percent.

The state government jobs monthly average is up 30 jobs YTD from 2013 due to YTD growth of 80 in state education positions. Federal and local government sectors are both averaging less than this point last year (both -320 and -270, respectively). Local government employment is holding steady after the traditional July dip during the school district's summer break and the October 2014 total is the same as October 2013. Continued uncertainty in the State's revenue picture in the near future coupled with the upcoming change in executive administration make it unlikely that there will be a significant increase in state government jobs, and a similar outlook holds at the local level as well.

**SERVICES PROVIDING JOBS**  
Municipality of Anchorage 2010-Present



↑ Increase of Services Providing Jobs  
**+130**  
2013 vs. 2014 YTD Change

---

**143,360**  
Services Providing Jobs in Anchorage (YTD avg.)

**OCT 13 vs. OCT 14  
YEAR TO DATE CHANGE**

**Retail**

**+580**

**Educational & Health Services**

**+100**

**Professional & Business Services**

**+50**

**Leisure & Hospitality**

**+130**

**Information**

**+70**

**Government**

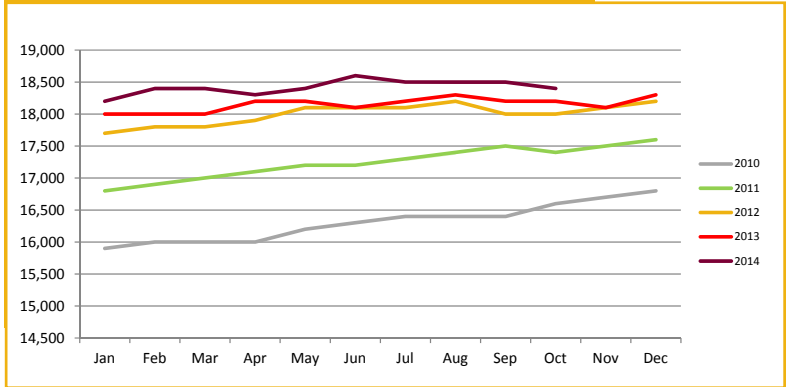
**-570**

# ••••• SERVICES PROVIDING JOBS SUMMARY

## HEALTH CARE EMPLOYMENT

**Employment in the health care sector is still doing well, with 280 more jobs over 2013 YTD.** The 1.54 percent YTD job growth in the local health care sector is nearly twice the 2013 end of year rate, and is still one of the fastest growing service producing industries. **We are confident that this sector will meet AEDC's January projection of 250 additional health care jobs by the end of the year.**

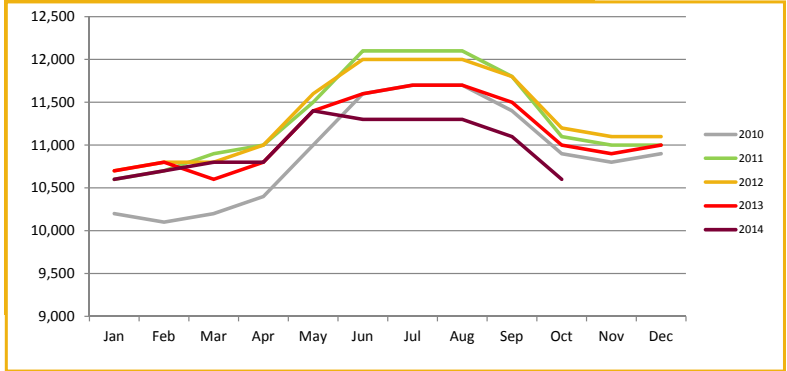
**HEALTH CARE EMPLOYMENT**  
Municipality of Anchorage 2010-Present



## TRANSPORTATION

**Monthly estimates in the Transportation/Warehouse/Utilities sector continue to lag behind 2013, with October's estimate of 10,600 jobs being 400 lower than October 2013.** The 2014 YTD average is down by 190 over last year and is at its lowest level since 2010. YTD increases in cargo transit tonnage through the Ted Stevens Anchorage International Airport and the Alaska Railroad give some hope that the reduction of jobs in this sector will level off for the remainder of 2014. The upcoming release of the Bureau of Labor Statistics Quarterly Census of Employment and Wages for the 2014 second quarter may give details on where these jobs are being lost and will be reported on as soon as it's available.

**TRANSPORTATION EMPLOYMENT**  
Municipality of Anchorage 2010-Present

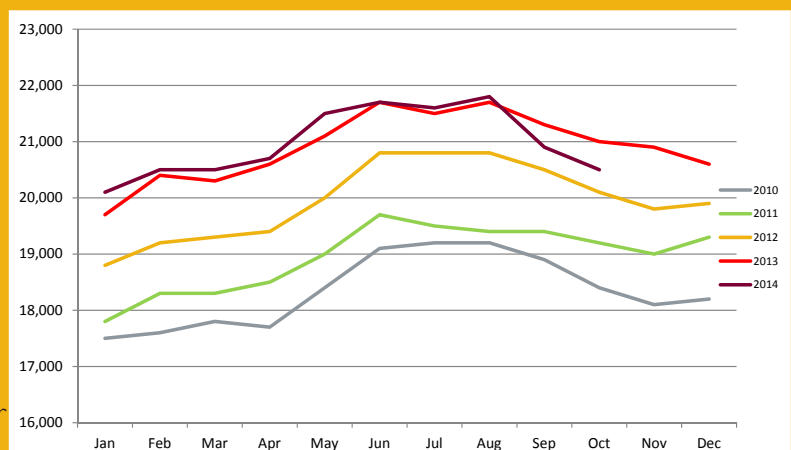


## PROFESSIONAL & BUSINESS SERVICES

ENGINEERING, ARCHITECTURE, LEGAL SERVICES, ACCOUNTING, SCIENTIFIC RESEARCH, WASTE MANAGEMENT & ADMINISTRATIVE SERVICES

**The YTD average for this industry continues to be on the positive side and is up 50 jobs from 2013 YTD.** However, there has been a significant drop in monthly totals in September and October that has wiped away two thirds of the YTD gains that had been achieved through August. This has been an unexpected turn of events, as this industry had continuously had one of the best growth rates each month and the September preliminary figures were very positive. The revised total came back 600 jobs less (20,900) and October was even lower (20,500). Input from local businesses in this industry may shed some light on these changes and will be included in next month's report. If the last two months do not show a leveling off or increase in job numbers, this industry is in jeopardy of posting a loss for the year.

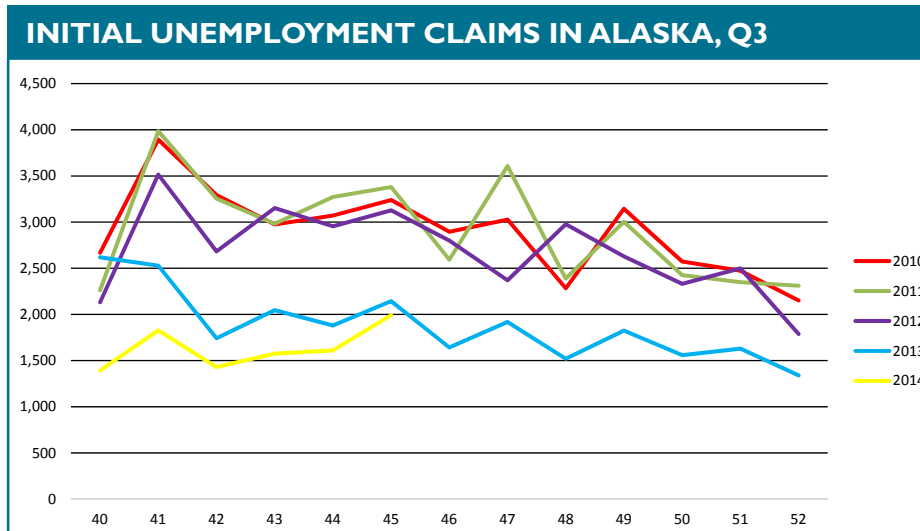
**PROFESSIONAL & BUSINESS SERVICES EMPLOYMENT**  
Municipality of Anchorage 2010-Present



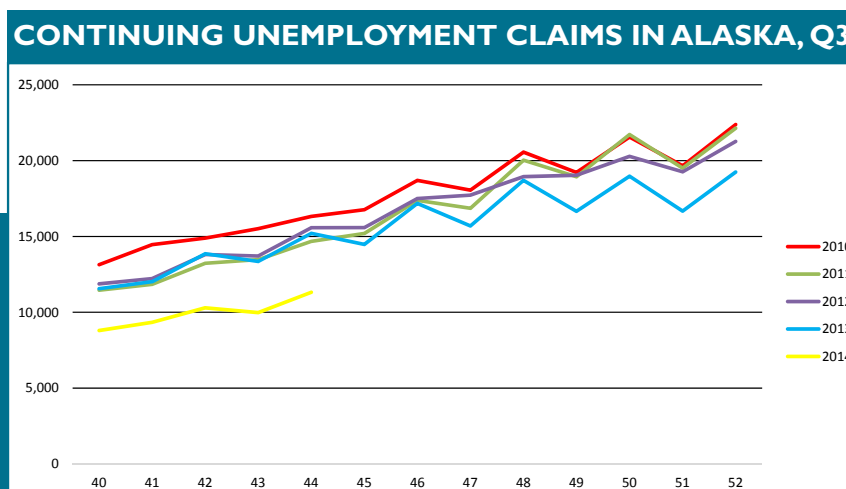
↑ Increase of Professional & Business Services Jobs  
**50** 2013 vs. 2014 YTD Change

# UNEMPLOYMENT CLAIMS

Initial unemployment claim applications can be interpreted as a proxy for layoffs. They tend to fall as job growth accelerates. Weekly totals for 2014 have been well below recent trends, and October's numbers have continued this movement. The typical spike in initial claims at the end of each quarter have been far smaller this year than in recent years and this has continued to be the case for the beginning of the fourth quarter. Since 2009, the weekly average in October has been 2,795. In 2014, October's weekly average was 1,556. Alaska businesses are still retaining workers at a very high level, as they have all year. Job retention seems to be holding steady throughout the state, which is also being reflected in the ongoing drop in the state's unemployment rate.



Continuing claims figures help to show how well unemployed workers are re-entering the workforce. This total does not include workers receiving extended benefits from the federal government. 2014's numbers, similar to initial claims' figures, are showing significantly low levels. The total for the final week of October was 10,294, the first time it's been over ten thousand in 15 weeks. The insured unemployment rate, which is the number of continuing claims divided by the total pool of covered workers, ended October at 3.28 and has been hovering around 3 since July. In contrast, this rate began the year at 6.17. Typically, claims begin to increase in September and plateau in January, but with no major negative economic impacts on the horizon, the severity of 2014 continuing claims' late season increases are expected to remain below recent years.



All data referenced in this employment report is from the State of Alaska, Dept. of Labor & Workforce Development website: [www.laborstats.alaska.gov](http://www.laborstats.alaska.gov) and from the U.S. Bureau of Labor Statistics: [www.bls.gov](http://www.bls.gov).

**Report compiled by Anchorage Economic Development Corp. Research Department.**

If you are interested in learning more about this data or are interested in how AEDC can help you develop a report, call AEDC at 907.258.3700.

AEDC, 510 L Street, Suite 603, Anchorage, AK 99501

## UNEMPLOYMENT ANALYSIS (YTD, 2014)

### Anchorage, Mat-Su, Kenai Peninsula Borough

	Jan	Feb	Mar	Apr	May	Jun	Jul	Aug	Sep	Oct	Nov	Dec	14 YTD Avg	13 YTD Avg	14 vs 13 (YTD)	
<b>Municipality of Anchorage</b>																
Labor Force	157,114	156,019	156,912	155,578	156,599	157,324	155,570	154,102	154,783	156,827	156,827	156,827	156,083	155,242	841	
Employment	148,838	147,203	148,385	147,911	149,081	148,563	147,692	145,936	147,244	149,418	149,418	149,418	148,027	147,279	748	
Unemployment	8,276	8,816	8,527	7,667	7,518	8,761	7,878	8,166	7,539	7,409	7,409	7,409	8,056	7,963	93	
Unemployment Rate	5.3%	5.7%	5.4%	4.9%	4.8%	5.6%	5.1%	5.3%	4.9%	4.7%	4.7%	4.7%	5.16%	5.13%	0.03%	
<b>Mat-Su Borough</b>																
Labor Force	44,593	44,245	44,485	43,692	43,660	43,935	43,507	42,872	42,925	43,724	43,724	43,724	43,764	43,574	190	
Employment	40,810	40,362	40,686	40,556	40,877	40,735	40,496	40,015	40,374	40,970	40,970	40,970	40,588	40,383	205	
Unemployment	3,783	3,883	3,799	3,136	2,783	3,200	3,011	2,857	2,551	2,754	2,754	2,754	3,176	3,191	(15)	
Unemployment Rate	8.5%	8.8%	8.5%	7.2%	6.4%	7.3%	6.9%	6.7%	5.9%	6.3%	6.3%	6.3%	7.26%	7.32%	-0.07%	
<b>Kenai Peninsula Borough</b>																
Labor Force	27,419	27,434	27,406	27,735	29,221	30,256	30,536	30,043	28,538	28,386	28,386	28,386	28,697	28,233	464	
Employment	25,022	24,947	24,999	25,645	27,357	28,157	28,630	28,070	26,658	26,449	26,449	26,449	26,593	26,126	467	
Unemployment	2,397	2,487	2,407	2,090	1,864	2,099	1,906	1,973	1,880	1,937	1,937	1,937	2,104	2,107	(3)	
Unemployment Rate	8.7%	9.1%	8.8%	7.5%	6.4%	6.9%	6.2%	6.6%	6.6%	6.8%	6.8%	6.8%	7.33%	7.46%	-0.13%	
<b>Southeastern Region</b>																
Labor Force	229,126	227,698	228,803	227,005	229,480	231,515	229,613	227,017	226,246	228,937	228,937	228,937	228,544	227,049	1,495	
Employment	214,670	212,512	214,070	214,112	217,315	217,455	216,818	214,021	214,276	216,837	216,837	216,837	215,209	213,788	1,420	
Unemployment	14,456	15,186	14,733	12,893	12,165	14,060	12,795	12,996	11,970	12,100	12,100	12,100	13,335	13,261	74	
Unemployment Rate	6.3%	6.7%	6.4%	5.7%	5.3%	6.1%	5.6%	5.7%	5.3%	5.3%	5.3%	5.3%	5.83%	5.84%	-0.01%	
<b>State of Alaska</b>																
Labor Force	362,147	362,081	363,566	360,434	367,044	373,799	376,645	371,881	367,176	364,598	364,598	364,598	366,937	364,797	2,140	
Employment	335,399	334,280	336,922	337,253	345,026	348,673	353,787	348,872	345,912	342,776	342,776	342,776	342,890	340,817	2,073	
Unemployment	26,748	27,801	26,644	23,181	22,018	25,126	22,858	23,009	21,264	21,822	21,822	21,822	24,047	23,980	67	
Unemployment Rate	7.4%	7.7%	7.3%	6.4%	6.0%	6.7%	6.1%	6.2%	5.8%	6.0%	6.0%	6.0%	6.55%	6.57%	-0.02%	

\*Note: These numbers reflect employment, unemployment, etc. for only those people that are residence of the specified City/Region, thus are not inclusive of people who commute to another city for their jobs. (Ex: Someone lives in Wasilla but works in Anchorage. They would be counted in the Mat-Su Borough's labor force and employment numbers, not the Municipality of Anchorage numbers)



# INDUSTRY EMPLOYMENT ESTIMATES 2014

## Municipality of Anchorage

Industry	Jan	Feb	Mar	Apr	May	Jun	Jul	Aug	Sep	Oct	Nov	Dec	2014 YTD Avg.	2013 YTD Avg.	2014 vs 2013 YTD Change	% Change
	Revised	Revised	Revised	Revised	Revised	Revised	Revised	Revised	Revised	Preliminary						
Total Nonfarm	152,800	154,300	154,700	156,300	158,800	161,300	159,100	162,500	160,200	158,500			157,850	157,530	320	0.20%
Goods Producing	12,400	12,800	12,800	13,400	14,200	15,300	16,200	16,600	15,900	15,400			14,500	14,310	190	1.33%
Services Providing	140,400	141,600	141,900	142,900	144,600	146,000	143,900	145,900	144,200	143,100			143,360	143,230	130	0.09%
Mining and Logging <sup>2</sup>	3,700	3,700	3,600	3,600	3,600	3,800	3,800	3,800	3,900	3,900			3,740	3,590	150	4.18%
Oil & Gas	3,500	3,500	3,500	3,400	3,400	3,600	3,600	3,600	3,700	3,700			3,550	3,420	130	3.80%
Construction	6,800	7,100	7,200	7,600	8,300	9,400	9,800	10,400	9,700	9,200			8,550	8,430	120	1.42%
Manufacturing	1,900	2,000	2,000	2,100	2,300	2,100	2,500	2,400	2,300	2,300			2,190	2,250	-60	-2.67%
Trade/Transportation/Utilities	32,300	32,200	32,300	33,000	34,100	34,300	34,600	34,600	34,100	33,600			33,510	33,120	390	1.18%
Wholesale Trade	4,700	4,700	4,800	4,900	5,000	5,100	5,200	5,100	5,000	4,900			4,940	4,930	10	0.20%
Retail Trade	17,000	16,800	16,800	17,300	17,700	17,900	18,100	18,100	18,000	18,100			17,580	17,000	580	3.41%
Trans/Warehouse/Utilities	10,600	10,700	10,800	10,800	11,400	11,300	11,300	11,300	11,100	10,600			10,990	11,180	-190	-1.70%
Information	3,900	3,900	3,900	3,900	3,900	3,900	4,000	3,900	4,000	3,900			3,920	3,850	70	1.82%
Financial Activities	7,500	7,500	7,400	7,500	7,500	7,700	7,700	7,500	7,600	7,600			7,550	7,590	-40	-0.53%
Professional & Business Svcs	20,100	20,500	20,500	20,700	21,500	21,700	21,600	21,800	20,900	20,500			20,980	20,930	50	0.24%
Educational & Health Services	24,900	25,200	25,200	25,200	25,300	25,000	25,100	25,100	25,000	24,800			25,080	24,980	100	0.40%
Health Care	18,200	18,400	18,400	18,300	18,400	18,600	18,500	18,500	18,500	18,400			18,420	18,140	280	1.54%
Leisure & Hospitality	16,300	16,500	16,800	16,800	17,000	17,800	18,000	18,000	17,000	16,800			17,100	16,970	130	0.77%
Accommodation	3,100	3,100	3,200	3,100	3,100	3,300	3,300	3,300	3,100	3,100			3,170	3,240	-70	-2.16%
Food Svcs & Drinking Places	11,100	11,100	11,300	11,400	11,600	12,100	12,100	12,100	11,400	11,200			11,540	11,400	140	1.23%
Other Services	5,900	6,000	6,000	6,000	6,000	6,200	6,200	6,100	6,200	6,300			6,090	6,020	70	1.16%
Government	29,500	29,800	29,700	29,900	29,300	29,400	29,800	29,500	29,500	29,600			29,150	29,720	-570	-1.92%
Federal Government	8,500	8,500	8,400	8,400	8,500	8,500	8,500	8,400	8,400	8,300			8,440	8,760	-320	-3.65%
State Government	10,800	10,900	10,900	11,000	10,500	10,500	10,200	10,400	11,100	11,100			10,740	10,710	30	0.28%
State Education	2,800	3,000	3,000	3,000	2,400	2,100	2,000	2,200	2,800	2,900			2,620	2,540	80	3.15%
Local Government	10,200	10,400	10,400	10,500	10,400	10,400	7,100	10,200	10,100	10,200			9,990	10,260	-270	-2.63%
Local Education	7,400	7,600	7,500	7,700	7,600	7,500	4,200	7,400	7,300	7,500			7,170	7,470	-300	-4.02%

- Nonfarm Wage & Salary excludes self-employed workers, fishers, domestics, and unpaid family workers.

- All totals are seasonally non-adjusted totals.

- Government includes employees of public school systems and the University of Alaska.

- Beginning January 2001, wage and salary employment estimates were published under a new classification system. The Standard Industrial Classification system (SIC) has been replaced by the North American Industry Classification System (NAICS). Data prior to 2001 are comparable only at the Total Nonfarm and Government levels.

<sup>1/</sup> As of January 2001, certain federally-recognized tribal entities were moved to Local Government, which created a series break for Total Government and Local Government. Please see the April 2002 Alaska Economic Trends publication for a detailed explanation.

<sup>2/</sup> This category was called "Natural Resources and Mining" in previous years. The change is in name only; the industries it includes remain the same.

- Some totals may not equal components due to rounding.

- Source: Alaska Department of Labor and Workforce Development, Research and Analysis Section

\* Note: The above numbers are representative of all people employed in the Municipality of Anchorage, this is inclusive of workers who claim residence outside of the Municipality of Anchorage. (Ex: someone who lives in the Mat-Su, but works in Anchorage would be included in these number)

### Quick Comparisons

14 vs 13 October	-100	-0.06%
14 vs 13 1st Qtr	567	0.37%
14 vs 13 2nd Qtr	500	0.32%
14 vs 13 3rd Qtr	33	0.02%
14 vs 13 4th Qtr	100	0.06%

# INDUSTRY EMPLOYMENT ESTIMATES 2014

## State of Alaska

Industry	Jan	Feb	Mar	Apr	May	Jun	Jul	Aug	Sep	Oct	Nov	Dec	Avg.	Avg.	YTD Change	% Change
	Revised	Revised	Revised	Revised	Revised	Revised	Revised	Revised	Revised	Preliminary						
Total Nonfarm	317,300	322,300	325,500	329,000	338,700	353,500	359,000	357,200	348,800	330,500			338,180	338,480	-300	-0.09%
Goods Producing	43,600	45,500	46,100	46,400	47,600	56,100	65,600	62,500	55,700	48,100			51,720	49,760	1,960	3.94%
Services Providing	273,700	276,800	279,400	282,600	291,100	297,400	293,400	294,700	293,100	282,400			286,460	288,720	-2,260	-0.78%
Mining and Logging <sup>2</sup>	17,000	17,200	17,500	17,900	18,300	19,000	19,400	19,400	19,100	18,500			18,330	17,500	830	4.74%
Oil & Gas Mining	16,900	17,000	17,200	17,400	17,700	18,400	18,700	18,800	18,600	18,100			17,800	17,240	640	3.71%
Construction	14,200	14,200	14,300	14,400	14,500	14,800	15,000	15,100	14,900	14,900			14,630	14,120	510	3.61%
Manufacturing	14,400	14,200	14,400	15,100	16,400	18,000	18,800	19,600	19,600	17,400			16,690	16,790	-100	-0.60%
Seafood Processing	12,200	14,100	14,200	13,400	12,900	19,100	27,400	23,500	18,000	12,200			16,700	15,470	1,230	7.95%
Trade/Transportation/Utilities	60,500	60,800	61,300	62,800	68,100	70,100	71,000	70,900	67,800	64,300			65,760	64,330	1,430	2.22%
Wholesale Trade	6,300	6,400	6,400	6,500	6,600	6,700	6,800	6,700	6,600	6,400			6,540	6,610	-70	-1.06%
Retail Trade	35,100	34,900	35,200	36,000	37,900	39,200	39,600	39,400	37,700	37,300			37,230	35,890	1,340	3.73%
Food & Beverage Stores	6,200	6,400	6,400	6,400	6,400	6,700	7,300	7,300	7,000	6,500			6,720	6,160	560	9.09%
General Merchandise Stores	9,900	9,700	9,700	9,900	10,200	10,600	10,800	10,700	10,600	10,700			10,280	9,800	480	4.90%
Trans/Warehouse/Utilities	19,100	19,500	19,700	20,300	23,600	24,200	24,600	24,800	23,500	20,600			21,990	21,830	160	0.73%
Air Transportation	5,500	5,500	5,700	5,800	6,500	6,800	6,900	6,900	6,600	6,200			6,240	5,920	320	5.41%
Information	6,200	6,200	6,200	6,100	6,200	6,300	6,200	6,100	6,200	6,100			6,180	6,140	40	0.65%
Telecommunications	4,100	4,100	4,100	4,100	4,100	4,100	4,100	4,000	4,000	4,000			4,070	4,060	10	0.25%
Financial Activities	11,800	11,700	11,600	11,600	11,700	12,200	12,500	12,300	11,800	11,700			11,890	12,230	-340	-2.78%
Professional & Business Svcs	28,200	28,100	28,600	29,200	30,000	30,900	31,000	31,500	31,300	30,000			29,880	30,270	-390	-1.29%
Educational & Health Services	47,100	47,500	47,600	47,200	47,100	46,300	46,000	46,500	46,800	46,500			46,860	47,120	-260	-0.55%
Health Care	33,600	33,700	33,900	33,500	33,600	33,900	33,700	33,900	33,500	33,200			33,650	33,560	90	0.27%
Leisure & Hospitality	28,500	28,600	29,900	30,600	33,300	37,800	38,600	38,500	35,500	29,500			33,080	34,310	-1,230	-3.58%
Accommodation	6,100	5,900	6,000	6,200	7,100	9,100	9,600	9,600	8,300	6,100			7,400	8,530	-1,130	-13.25%
Food Svcs & Drinking Places	18,500	18,600	19,500	19,900	21,300	23,100	23,100	23,200	22,100	19,400			20,870	20,820	50	0.24%
Other Services	11,400	11,100	11,300	11,400	11,500	11,500	11,700	11,500	11,600	11,600			11,460	11,740	-280	-2.39%
Government	80,000	82,800	82,900	83,700	83,200	82,300	76,400	77,400	82,100	82,700			81,350	82,580	-1,230	-1.49%
Federal Government	14,500	14,500	14,600	14,900	15,200	15,500	15,500	15,300	15,100	14,500			14,960	15,600	-640	-4.10%
State Government	24,700	26,600	26,800	27,000	26,100	25,300	24,700	25,200	26,400	26,500			25,930	26,220	-290	-1.11%
State Education	6,600	8,600	8,600	8,700	7,600	6,200	6,000	6,500	8,200	8,500			7,550	7,650	-100	-1.31%
Local Government	40,800	41,700	41,500	41,800	41,900	41,500	36,200	36,900	40,600	41,700			40,460	40,760	-300	-0.74%
Local Education	22,900	23,800	23,600	23,900	23,500	22,300	17,100	18,300	22,900	23,800			22,210	22,620	-410	-1.81%
Tribal Government <sup>1</sup>	3,600	3,500	3,500	3,500	3,900	4,200	4,400	4,500	4,200	4,000			3,930	3,640	290	7.97%

<sup>1</sup> Nonfarm Wage & Salary excludes self-employed workers, fishers, domestics, and unpaid family workers.

<sup>2</sup> All totals are non-seasonally adjusted totals.

<sup>3</sup> Government includes employees of public school systems and the University of Alaska.

<sup>4</sup> Beginning January 2001, wage and salary employment estimates were published under a new classification system. The Standard Industrial Classification system (SIC) has been replaced by the North American Industry Classification System (NAICS). Data prior to 2001 are comparable only at the Total Nonfarm and Government levels.

<sup>5</sup> As of January 2001, certain federally-recognized tribal entities were moved to Local Government, which created a series break for Total Government and Local Government. Please see the April 2002 Alaska Economic Trends publication for a detailed explanation.

<sup>6</sup> This category was called "Natural Resources and Mining" in previous years. The change is in name only; the industries it includes remain the same.

<sup>7</sup> Totals may not equal sub-sections due to rounding.

<sup>8</sup> Source: Alaska Department of Labor and Workforce Development, Research and Analysis Section

### Quick Comparisons

14 vs 13 Oct. -2,400 -0.72%

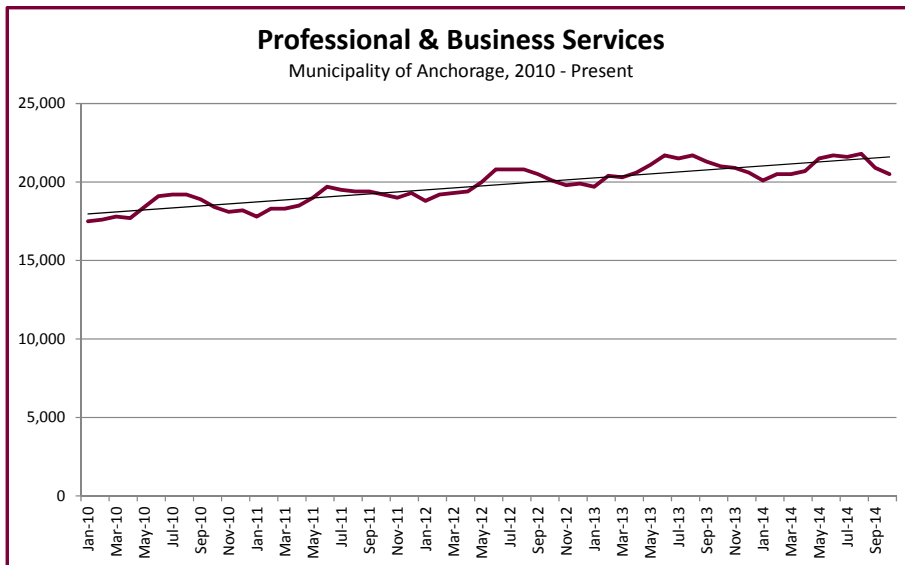
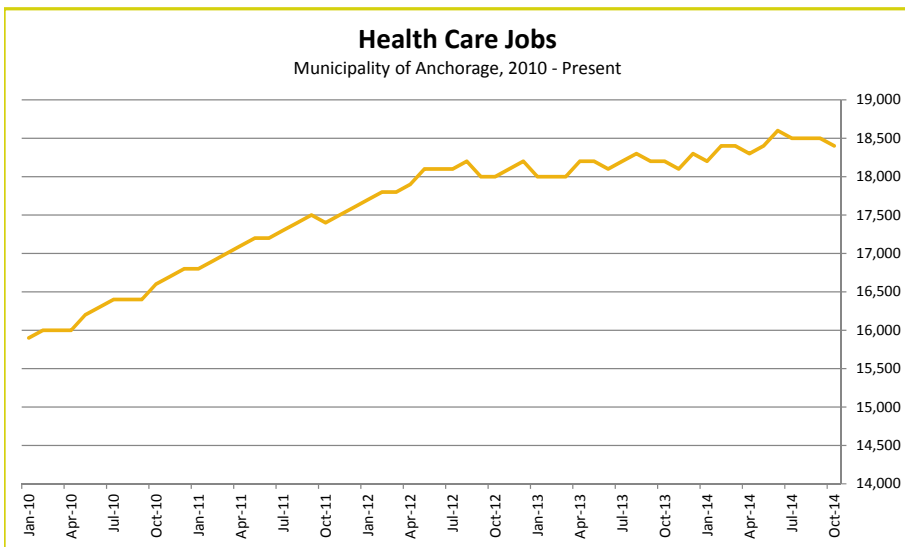
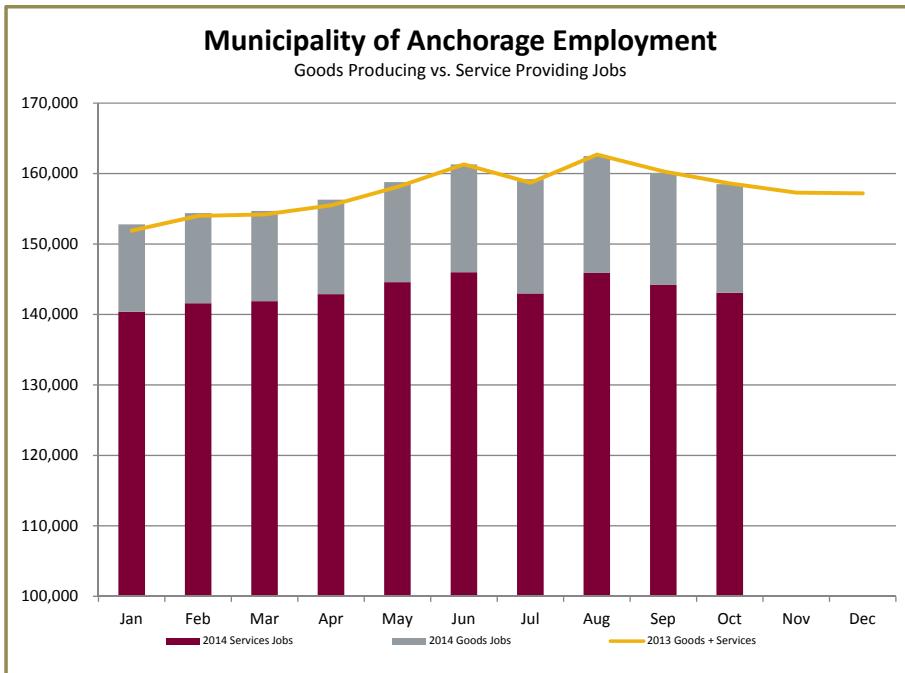
14 vs 13 1st Qtr 1,600 0.50%

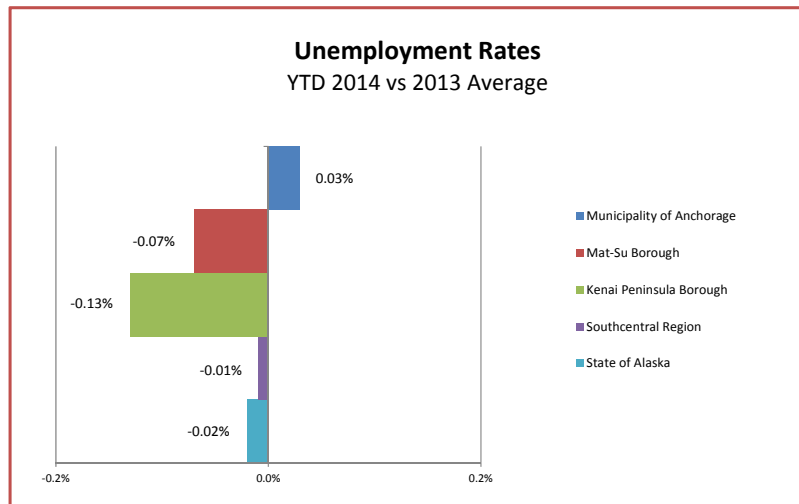
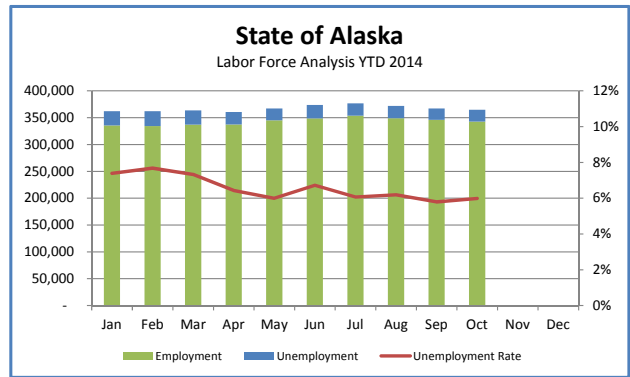
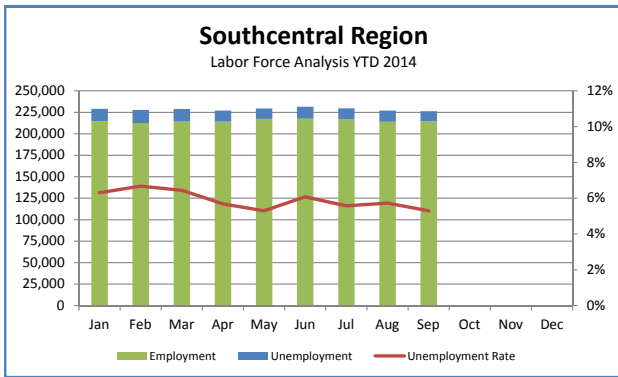
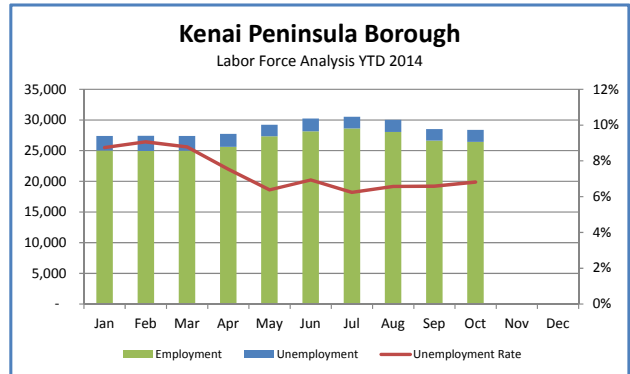
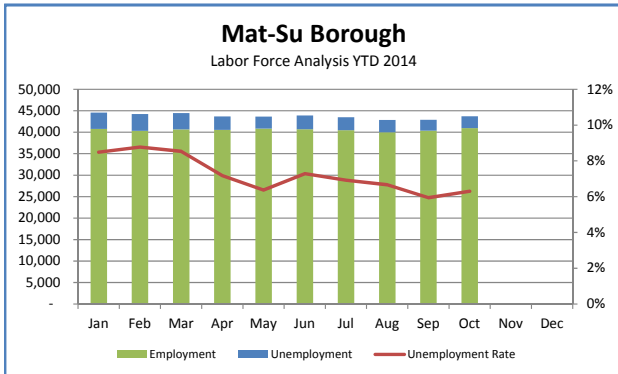
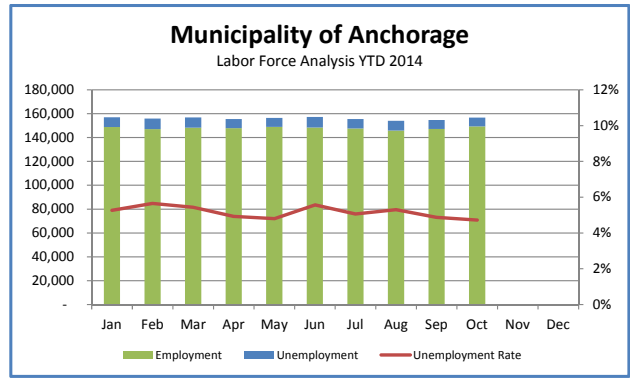
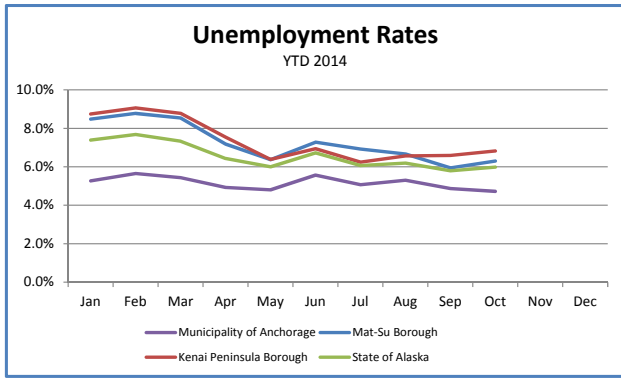
14 vs 13 2nd Qtr -300 -0.09%

14 vs 13 3rd Qtr -1,500 -0.42%

14 vs 13 4th Qtr -2,400 -0.72%

# ADDITIONAL CHARTS





Dianne Blumer  
Commissioner

P.O. Box 111149  
Juneau, AK 99811-1149  
www.labor.alaska.gov



Beth Leschper  
Communications Director  
907.465.2700  
cell: 907.723.1321  
beth.leschper@alaska.gov

## Press Release

COMMISSIONER'S OFFICE

November 21, 2014

No. 14-44

### Unemployment rate at 6.8 percent in October

Alaska's seasonally adjusted unemployment rate was 6.8 percent in October, unchanged from September and August. The comparable national rate was 5.8 percent.

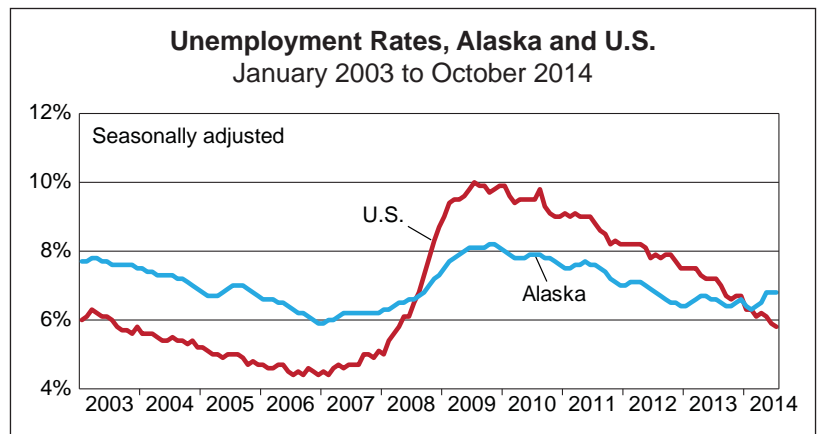
With the national rate now a whole percentage point below Alaska's, the difference is getting closer to normal pre-recession levels. In the five years before the U.S. rate spiked above Alaska's, the national rate averaged 1.6 percentage points below Alaska's.

Alaska's not-seasonally adjusted rate was 6.0 percent in October, up from 5.8 percent in September. September's rate will almost certainly end up being the lowest point in the year. Now that the unadjusted rate has turned the corner from summer, historical patterns suggest it will continue to climb for the rest of the year.

Following the statewide trend, unadjusted rates increased in 21 out of 29 boroughs and census areas. Skagway Municipality stood out among all areas for the largest change in either direction, with a 12.7 percentage point increase from September to October. Skagway's economy changes drastically after the last cruise ship of the season leaves port, reflected in the October jobless rate.

The highest October unemployment rate was in Wade-Hampton Census Area, at 19.4 percent. The lowest rate was in the North Slope Borough, at 4.0 percent. The North Slope Borough is the most counter-cyclical area to the rest of the state because its construction season occurs in the winter, which results in low wintertime jobless rates.

**Contact: Caroline Schultz, Economist (907) 465-6027**  
Research and Analysis Web site: laborstats.alaska.gov



Unemployment Rates, Seasonally Adjusted			
	10/14	9/14	10/13
Alaska	6.8%	6.8%	6.6%
U.S.	5.8%	5.9%	7.2%

Sources for graph and table: Alaska Department of Labor and Workforce Development, Research and Analysis Section; and U.S. Bureau of Labor Statistics

For detailed employment estimates, see <http://live.laborstats.alaska.gov/ces/>. The estimates are preliminary and subject to potentially large revisions.

## Labor Force by Borough and Census Area, Not Seasonally Adjusted<sup>1</sup>

	Civilian Labor Force			Unemployed					
	10/14 <sup>P</sup>	9/14	10/13	Number			Rate		
				10/14 <sup>P</sup>	9/14	10/13	10/14 <sup>P</sup>	9/14	10/13
<b>Alaska</b>	<b>364,598</b>	<b>367,176</b>	<b>361,542</b>	<b>21,822</b>	<b>21,264</b>	<b>22,273</b>	<b>6.0</b>	<b>5.8</b>	<b>6.2</b>
<b>Anchorage/Mat-Su Region</b>	<b>200,551</b>	<b>197,708</b>	<b>198,413</b>	<b>10,163</b>	<b>10,090</b>	<b>10,267</b>	<b>5.1</b>	<b>5.1</b>	<b>5.2</b>
Anchorage, Municipality of	156,827	154,783	155,085	7,409	7,539	7,426	4.7	4.9	4.8
Matanuska-Susitna Borough	43,724	42,925	43,328	2,754	2,551	2,841	6.3	5.9	6.6
<b>Gulf Coast Region</b>	<b>40,257</b>	<b>41,435</b>	<b>40,104</b>	<b>2,650</b>	<b>2,518</b>	<b>2,769</b>	<b>6.6</b>	<b>6.1</b>	<b>6.9</b>
Kenai Peninsula Borough	28,386	28,538	28,048	1,937	1,880	1,965	6.8	6.6	7.0
Kodiak Island Borough	6,858	7,107	7,059	280	286	334	4.1	4.0	4.7
Valdez-Cordova Census Area	5,013	5,790	4,997	433	352	470	8.6	6.1	9.4
<b>Interior Region</b>	<b>54,435</b>	<b>54,880</b>	<b>53,593</b>	<b>3,316</b>	<b>3,103</b>	<b>3,295</b>	<b>6.1</b>	<b>5.7</b>	<b>6.1</b>
Denali Borough	1,356	2,183	1,261	97	70	123	7.2	3.2	9.8
Fairbanks North Star Borough	46,776	46,278	45,746	2,481	2,301	2,393	5.3	5.0	5.2
Southeast Fairbanks Census Area	3,261	3,396	3,329	324	321	346	9.9	9.5	10.4
Yukon-Koyukuk Census Area	3,042	3,023	3,257	414	411	433	13.6	13.6	13.3
<b>Northern Region</b>	<b>13,008</b>	<b>12,654</b>	<b>13,100</b>	<b>1,094</b>	<b>1,138</b>	<b>1,193</b>	<b>8.4</b>	<b>9.0</b>	<b>9.1</b>
Nome Census Area	4,324	4,178	4,428	450	473	449	10.4	11.3	10.1
North Slope Borough	5,478	5,364	5,453	221	218	271	4.0	4.1	5.0
Northwest Arctic Borough	3,206	3,112	3,219	423	447	473	13.2	14.4	14.7
<b>Southeast Region</b>	<b>38,275</b>	<b>41,726</b>	<b>38,126</b>	<b>2,380</b>	<b>2,143</b>	<b>2,305</b>	<b>6.2</b>	<b>5.1</b>	<b>6.0</b>
Haines Borough	1,165	1,675	1,146	97	80	93	8.3	4.8	8.1
Hoonah-Angoon Census Area	1,103	1,505	963	125	142	113	11.3	9.4	11.7
Juneau, City and Borough of	17,597	18,067	17,859	799	741	781	4.5	4.1	4.4
Ketchikan Gateway Borough	7,916	8,867	7,904	490	449	465	6.2	5.1	5.9
Petersburg Census Area	1,598	1,828	1,605	124	154	143	7.8	8.4	8.9
Prince of Wales-Hyder Census Area	2,423	2,674	2,353	321	288	269	13.2	10.8	11.4
Sitka, City and Borough of	4,360	4,744	4,311	198	186	216	4.5	3.9	5.0
Skagway, Municipality of	732	887	654	105	14	110	14.3	1.6	16.8
Wrangell, City and Borough of	1,057	1,161	1,047	97	71	95	9.2	6.1	9.1
Yakutat, City and Borough of	324	318	284	24	18	20	7.4	5.7	7.0
<b>Southwest Region</b>	<b>18,072</b>	<b>18,773</b>	<b>18,203</b>	<b>2,218</b>	<b>2,272</b>	<b>2,444</b>	<b>12.3</b>	<b>12.1</b>	<b>13.4</b>
Aleutians East Borough	1,188	1,193	1,097	95	91	134	8.0	7.6	12.2
Aleutians West Census Area	2,843	2,934	3,076	231	170	355	8.1	5.8	11.5
Bethel Census Area	7,611	7,173	7,618	1,036	1,118	1,083	13.6	15.6	14.2
Bristol Bay Borough	563	1,243	560	33	33	37	5.9	2.7	6.6
Dillingham Census Area	1,883	2,059	1,866	188	193	188	10.0	9.4	10.1
Lake and Peninsula Borough	1,118	1,305	1,114	78	79	76	7.0	6.1	6.8
Wade Hampton Census Area	2,866	2,866	2,872	557	588	571	19.4	20.5	19.9

P = Preliminary. As more information becomes available, data are revised every month for the previous month and again at the end of every calendar year.

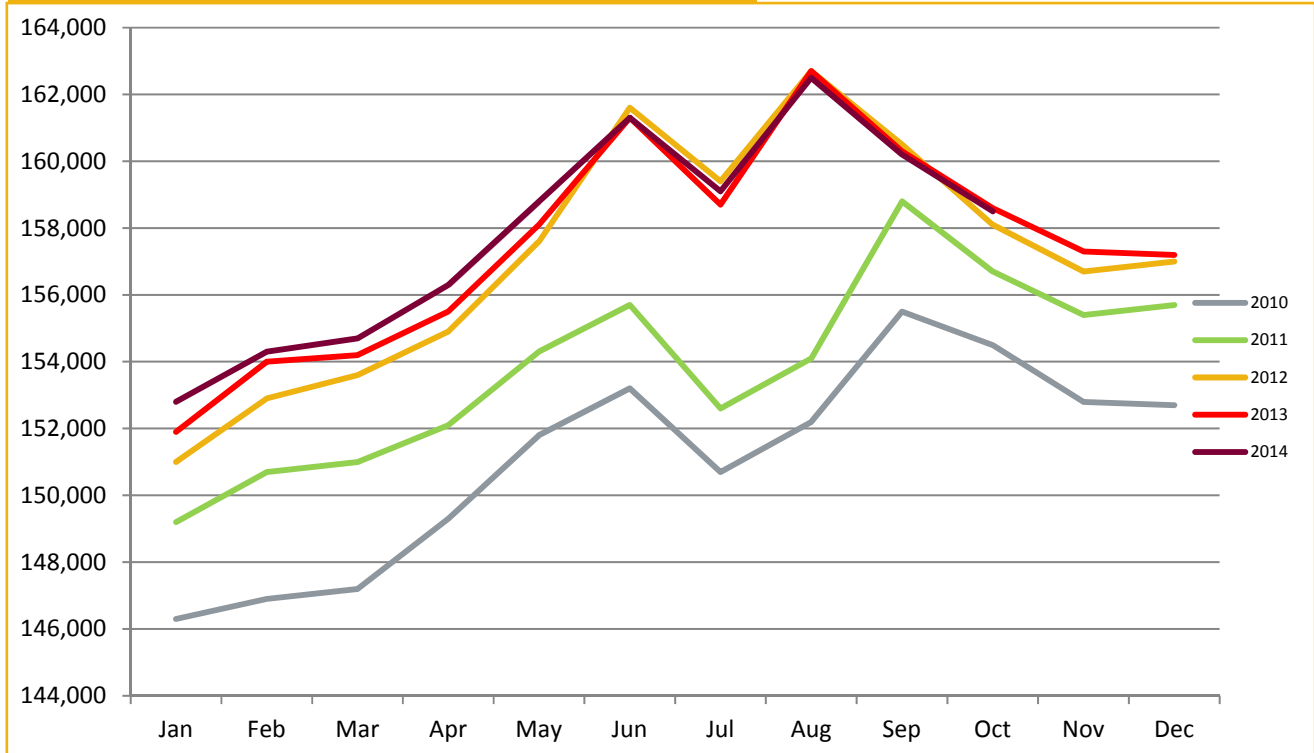
Note: The official definition of unemployment excludes anyone who has not made an active attempt to find work in the four-week period up to and including the week that includes the 12th of the reference month. Many in rural Alaska do not meet the definition because they have not conducted an active job search due to the scarcity of employment opportunities.

<sup>1</sup>Unemployment rates that are not seasonally adjusted should not be compared with those that are.

Source: Alaska Department of Labor and Workforce Development, Research and Analysis Section; and U.S. Bureau of Labor Statistics

## ANCHORAGE EMPLOYMENT

Municipality of Anchorage 2010-Present



# 4.7%

October Unemployment  
Rate for Anchorage

# 158,500

Total jobs in Anchorage  
October 2014 (preliminary)



# AEDC

Anchorage Economic  
Development Corporation