

Eighth Edition 2015 - October



AEDDC
Anchorage Economic
Development Corporation

Anchorage Employment Report

Sponsored by:



First National Bank

A L A S K A

MEMBER FDIC

Labor Force by Borough and Census Area, Not Seasonally Adjusted¹

	Civilian Labor Force			Unemployed					
	10/15 ^P	9/15	10/14	Number			Rate		
				10/15 ^P	9/15	10/14	10/15 ^P	9/15	10/14
Alaska	360,661	362,904	363,930	21,867	20,684	22,496	6.1	5.7	6.2
Anchorage/Mat-Su Region	203,416	200,512	203,276	10,618	10,280	10,605	5.2	5.1	5.2
Anchorage, Municipality	159,595	157,408	159,418	7,476	7,323	7,480	4.7	4.7	4.7
Matanuska-Susitna Borough	43,821	43,104	43,858	3,142	2,957	3,125	7.2	6.9	7.1
Gulf Coast Region	38,601	39,925	39,082	2,729	2,459	2,718	7.1	6.2	7.0
Kenai Peninsula Borough	27,526	28,081	27,797	2,040	1,879	1,981	7.4	6.7	7.1
Kodiak Island Borough	6,510	6,641	6,590	267	261	291	4.1	3.9	4.4
Valdez-Cordova Census Area	4,565	5,203	4,695	422	319	446	9.2	6.1	9.5
Interior Region	53,065	53,587	53,769	3,206	2,906	3,362	6.0	5.4	6.3
Denali Borough	999	1,451	994	94	67	99	9.4	4.6	10.0
Fairbanks North Star Borough	46,778	46,763	47,245	2,438	2,203	2,514	5.2	4.7	5.3
Southeast Fairbanks Census Area	2,765	2,838	2,924	279	258	328	10.1	9.1	11.2
Yukon-Koyukuk Census Area	2,523	2,535	2,606	395	378	421	15.7	14.9	16.2
Northern Region	11,110	11,047	11,923	1,045	1,092	1,118	9.4	9.9	9.4
Nome Census Area	4,072	4,048	4,498	411	428	456	10.1	10.6	10.1
North Slope Borough	4,171	4,147	4,178	231	240	228	5.5	5.8	5.5
Northwest Arctic Borough	2,867	2,852	3,247	403	424	434	14.1	14.9	13.4
Southeast Region	35,627	38,792	36,398	2,228	1,948	2,430	6.3	5.0	6.7
Haines Borough	984	1,271	1,004	90	72	101	9.1	5.7	10.1
Hoonah-Angoon Census Area	999	1,211	990	133	118	143	13.3	9.7	14.4
Juneau, City and Borough	16,646	17,392	16,848	745	695	818	4.5	4.0	4.9
Ketchikan Gateway Borough	6,609	7,394	6,771	453	378	502	6.9	5.1	7.4
Petersburg Borough	1,479	1,684	1,604	115	117	132	7.8	6.9	8.2
Prince of Wales-Hyder Census Area	2,656	2,836	2,773	301	268	329	11.3	9.4	11.9
Sitka, City and Borough	4,282	4,704	4,322	189	178	202	4.4	3.8	4.7
Skagway, Municipality	742	969	785	117	42	95	15.8	4.3	12.1
Wrangell, City and Borough	974	1,027	986	70	63	83	7.2	6.1	8.4
Yakutat, City and Borough	256	304	315	15	17	25	5.9	5.6	7.9
Southwest Region	18,837	19,043	19,482	2,039	2,000	2,263	10.8	10.5	11.6
Aleutians East Borough	2,109	2,048	2,243	71	72	96	3.4	3.5	4.3
Aleutians West Census Area	3,959	4,053	3,842	166	117	234	4.2	2.9	6.1
Bethel Census Area	7,278	7,158	7,729	940	982	1,055	12.9	13.7	13.6
Bristol Bay Borough	280	515	293	33	31	33	11.8	6.0	11.3
Dillingham Census Area	1,756	1,796	1,897	191	183	192	10.9	10.2	10.1
Kusilvak Census Area	2,840	2,808	2,860	567	552	570	20.0	19.7	19.9
Lake and Peninsula Borough	615	665	618	71	63	83	11.5	9.5	13.4

P = Preliminary. As more information becomes available, data are revised every month for the previous month and again at the end of every calendar year.

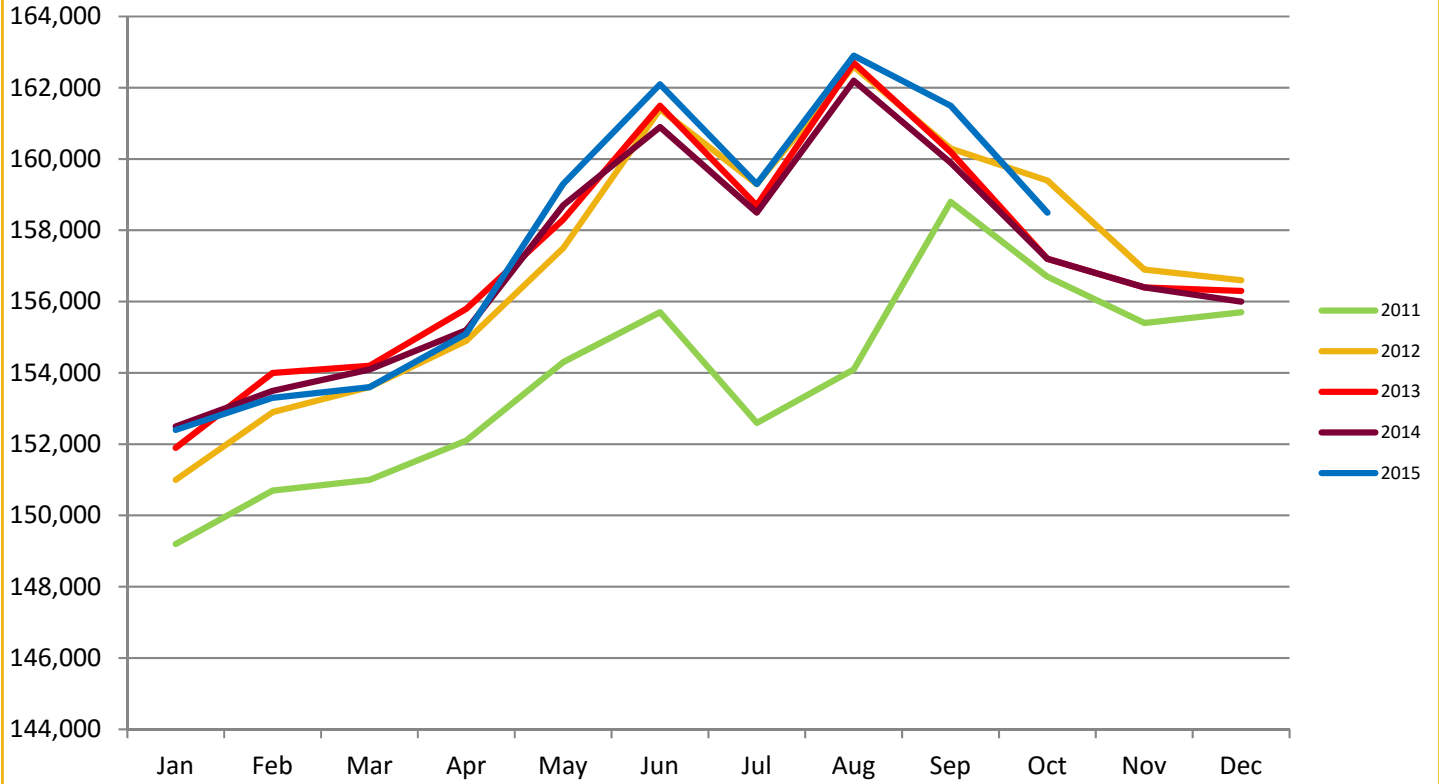
Note: The official definition of unemployment excludes anyone who has not made an active attempt to find work in the four-week period up to and including the week that includes the 12th of the reference month. Many in rural Alaska do not meet the definition because they have not conducted an active job search due to the scarcity of employment opportunities.

¹Unemployment rates that are not seasonally adjusted should not be compared with those that are.

Source: Alaska Department of Labor and Workforce Development, Research and Analysis Section; and U.S. Bureau of Labor Statistics

ANCHORAGE EMPLOYMENT

Municipality of Anchorage 2011-Present



AEDC
Anchorage Economic
Development Corporation