

Ninth Edition 2015 - November



**AEDDC**  
Anchorage Economic  
Development Corporation

# Anchorage Employment Report

Sponsored by:



**First National Bank**

**A L A S K A**

MEMBER FDIC



























## Labor Force by Borough and Census Area, Not Seasonally Adjusted<sup>1</sup>

	Civilian Labor Force			Unemployed					
	11/15 <sup>P</sup>	10/15	11/14	Number			Rate		
				11/15 <sup>P</sup>	10/15	11/14	11/15 <sup>P</sup>	10/15	11/14
<b>Alaska</b>	<b>358,981</b>	<b>360,581</b>	<b>363,217</b>	<b>22,936</b>	<b>21,822</b>	<b>23,351</b>	<b>6.4</b>	<b>6.1</b>	<b>6.4</b>
<b>Anchorage/Mat-Su Region</b>	<b>205,041</b>	<b>203,222</b>	<b>205,970</b>	<b>11,249</b>	<b>10,592</b>	<b>11,081</b>	<b>5.5</b>	<b>5.2</b>	<b>5.4</b>
Anchorage, Municipality	160,801	159,441	161,528	7,853	7,457	7,798	4.9	4.7	4.8
Matanuska-Susitna Borough	44,240	43,781	44,442	3,396	3,135	3,283	7.7	7.2	7.4
<b>Gulf Coast Region</b>	<b>37,437</b>	<b>38,556</b>	<b>38,140</b>	<b>2,839</b>	<b>2,723</b>	<b>2,895</b>	<b>7.6</b>	<b>7.1</b>	<b>7.6</b>
Kenai Peninsula Borough	27,046	27,493	27,367	2,112	2,035	2,079	7.8	7.4	7.6
Kodiak Island Borough	6,110	6,503	6,378	301	267	362	4.9	4.1	5.7
Valdez-Cordova Census Area	4,281	4,560	4,395	426	421	454	10.0	9.2	10.3
<b>Interior Region</b>	<b>52,702</b>	<b>53,204</b>	<b>53,502</b>	<b>3,417</b>	<b>3,199</b>	<b>3,551</b>	<b>6.5</b>	<b>6.0</b>	<b>6.6</b>
Denali Borough	553	993	567	95	94	111	17.2	9.5	19.6
Fairbanks North Star Borough	46,857	46,950	47,482	2,593	2,432	2,661	5.5	5.2	5.6
Southeast Fairbanks Census Area	2,803	2,751	2,856	312	279	341	11.1	10.1	11.9
Yukon-Koyukuk Census Area	2,489	2,510	2,597	417	394	438	16.8	15.7	16.9
<b>Northern Region</b>	<b>11,260</b>	<b>11,112</b>	<b>11,835</b>	<b>1,062</b>	<b>1,043</b>	<b>1,093</b>	<b>9.4</b>	<b>9.4</b>	<b>9.2</b>
Nome Census Area	4,088	4,073	4,372	417	410	433	10.2	10.1	9.9
North Slope Borough	4,308	4,173	4,327	242	231	244	5.6	5.5	5.6
Northwest Arctic Borough	2,864	2,866	3,136	403	402	416	14.1	14.0	13.3
<b>Southeast Region</b>	<b>35,023</b>	<b>35,608</b>	<b>35,915</b>	<b>2,432</b>	<b>2,231</b>	<b>2,596</b>	<b>6.9</b>	<b>6.3</b>	<b>7.2</b>
Haines Borough	936	984	958	106	89	112	11.3	9.0	11.7
Hoonah-Angoon Census Area	976	999	980	159	133	162	16.3	13.3	16.5
Juneau, City and Borough	16,687	16,631	16,901	785	743	847	4.7	4.5	5.0
Ketchikan Gateway Borough	6,406	6,603	6,646	482	452	523	7.5	6.8	7.9
Petersburg Borough	1,416	1,478	1,478	134	115	148	9.5	7.8	10.0
Prince of Wales-Hyder Census Area	2,651	2,655	2,769	324	301	340	12.2	11.3	12.3
Sitka, City and Borough	4,125	4,278	4,318	208	188	229	5.0	4.4	5.3
Skagway, Municipality	610	749	612	126	125	119	20.7	16.7	19.4
Wrangell, City and Borough	979	974	1,008	83	70	94	8.5	7.2	9.3
Yakutat, City and Borough	237	257	245	25	15	22	10.5	5.8	9.0
<b>Southwest Region</b>	<b>17,518</b>	<b>18,879</b>	<b>17,856</b>	<b>1,937</b>	<b>2,033</b>	<b>2,136</b>	<b>11.1</b>	<b>10.8</b>	<b>12.0</b>
Aleutians East Borough	1,543	2,115	1,709	79	71	95	5.1	3.4	5.6
Aleutians West Census Area	3,614	3,969	3,410	139	165	195	3.8	4.2	5.7
Bethel Census Area	7,126	7,293	7,300	893	937	992	12.5	12.8	13.6
Bristol Bay Borough	242	280	267	30	33	35	12.4	11.8	13.1
Dillingham Census Area	1,698	1,759	1,787	185	190	184	10.9	10.8	10.3
Kusilvak Census Area	2,752	2,846	2,828	535	566	556	19.4	19.9	19.7
Lake and Peninsula Borough	543	617	555	76	71	79	14.0	11.5	14.2

P = Preliminary. As more information becomes available, data are revised every month for the previous month and again at the end of every calendar year.

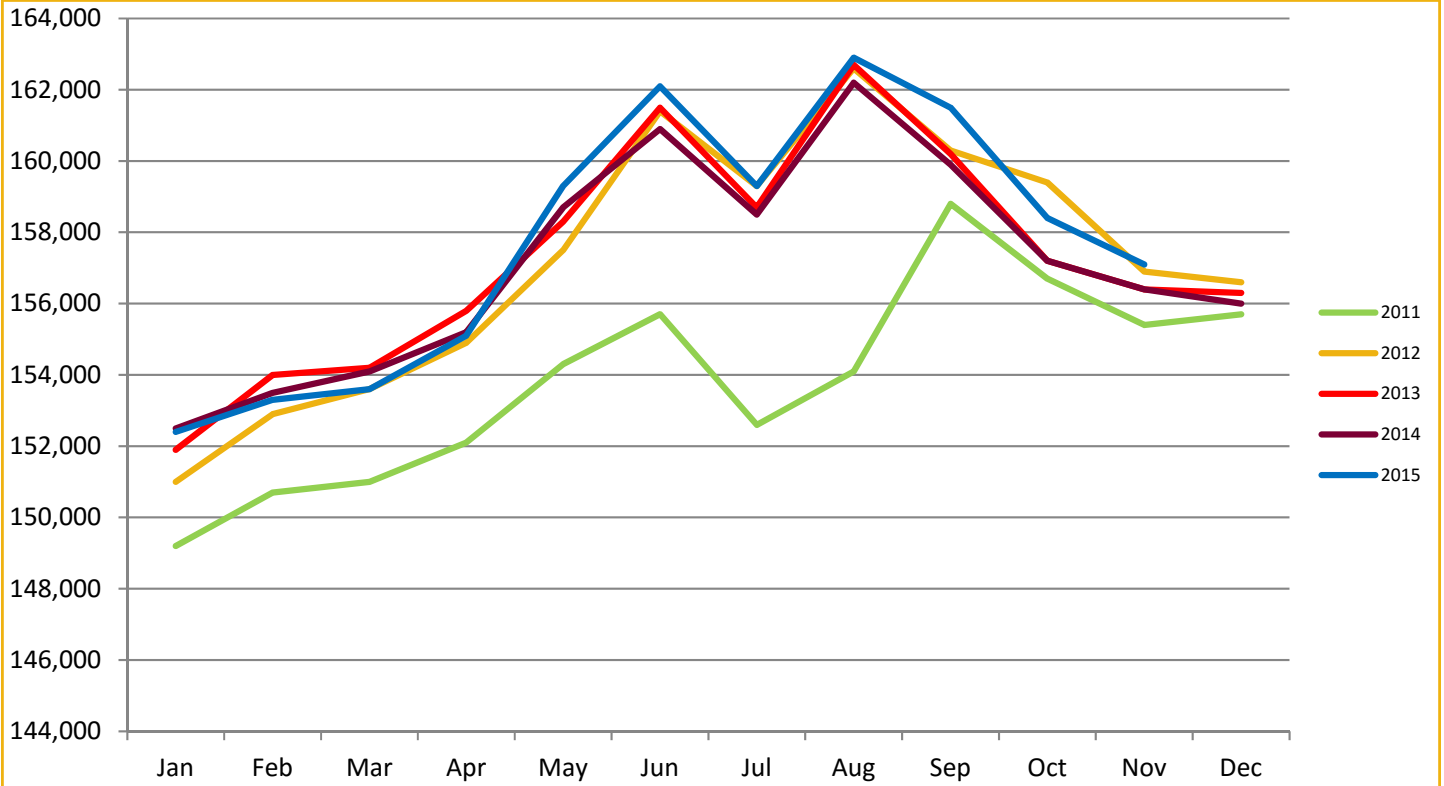
Note: The official definition of unemployment excludes anyone who has not made an active attempt to find work in the four-week period up to and including the week that includes the 12th of the reference month. Many in rural Alaska do not meet the definition because they have not conducted an active job search due to the scarcity of employment opportunities.

<sup>1</sup>Unemployment rates that are not seasonally adjusted should not be compared with those that are.

Source: Alaska Department of Labor and Workforce Development, Research and Analysis Section; and U.S. Bureau of Labor Statistics

# ANCHORAGE EMPLOYMENT

Municipality of Anchorage 2011-Present



**AEDC**  
Anchorage Economic  
Development Corporation