



Anchorage Employment Report

CO-SPONSORED BY:



TABLE OF CONTENTS

EXECUTIVE SUMMARY	2
GOODS PRODUCING JOBS SUMMARY	3
SERVICES PROVIDING JOBS SUMMARY	5
HEALTH CARE SNAPSHOT	5
PROFESSIONAL & BUSINESS SERVICES SNAPSHOT	5
ANCHORAGE HOUSING	6
ALASKA FORECLOSURES & BANKRUPTCIES.....	8
UNEMPLOYMENT CLAIMS	9
UNEMPLOYMENT ANALYSIS OF SOUTHCENTRAL REGION (TABLE).....	10
LABOR FORCE ANALYSIS CHARTS.....	11
ANCHORAGE EMPLOYMENT ESTIMATES TABLE.....	12
ALASKA EMPLOYMENT ESTIMATES TABLE	13
ALASKA DEPARTMENT OF LABOR PRESS RELEASE.....	14

All data referenced in this employment report is from the State of Alaska, Dept. of Labor & Workforce Development website: www.laborstats.alaska.gov and from the U.S. Bureau of Labor Statistics: www.bls.gov.

Report compiled by Anchorage Economic Development Corp. Research Department.

Report generously sponsored by First National Bank Alaska and Alaska Communications.

If you are interested in learning more about this data or are interested in how AEDC can help you develop a report, call AEDC at 907.258.3700.

EXECUTIVE SUMMARY

MONTHLY UNEMPLOYMENT

The preliminary not seasonally adjusted unemployment rate for Anchorage in February was 5.9 percent, up 0.3 percent from the January revised rate. **This is above the national not seasonally adjusted rate of 4.9 percent and below the statewide not seasonally adjusted rate of 7.4 percent.** As always, it should be noted that these are preliminary survey figures for July and will be revised next month.

5.9%

February 2017
Unemployment Rate
for Anchorage (preliminary)

YEAR-TO-DATE UNEMPLOYMENT

The 2017 average year-to-date (YTD) not seasonally adjusted unemployment rate in Anchorage was 5.7 percent at the end of February. **A decrease of 453 in the employment total and 588 in the Anchorage labor force during the YTD period has resulted in the reported unemployment total increasing by 135.**

5.7%

2017 YTD
Unemployment Rate
for Anchorage (preliminary)

The total number of unemployed people in Anchorage for the month of February is estimated at 9,230 (those actively looking for jobs), 130 more than February 2016. In the Mat-Su Borough, the YTD average monthly unemployment rate of 9.1 percent is down 0.2 percent from 2016 YTD while the Kenai Peninsula's unemployment rate of 9.2 percent has decreased by 0.6 percent during the same period (see the charts on pages 9-10 for more details).

It is important to note that the Anchorage unemployment numbers represent the labor force residing in Anchorage, and do not describe the number of filled positions in Anchorage. The industry employment estimates referenced in the remainder of this report are representative of the number of jobs in the Municipality of Anchorage, regardless of the job holder's place of residency.

ANCHORAGE INDUSTRY EMPLOYMENT ESTIMATES

As for Anchorage industry employment estimates, which includes total jobs in Anchorage held by city residents and commuters, the YTD average for 2017 shows a loss of 1,500 jobs (-1.0%) so far compared to the same period in 2016. The private sector (total jobs minus government jobs) at 120,600 jobs shrunk by 1,200 (-1.1%) jobs during this time, while Government employment at 29,500 jobs has decreased by 300 (-1.0%). Federal jobs have decreased by 200 (-2.3%) so far. State government jobs have decreased by 400 (-3.8%) and Local Government jobs have increased by 200 (+1.9%). Please note that these figures will likely be revised as more data is received and additional analysis is conducted.

150,200

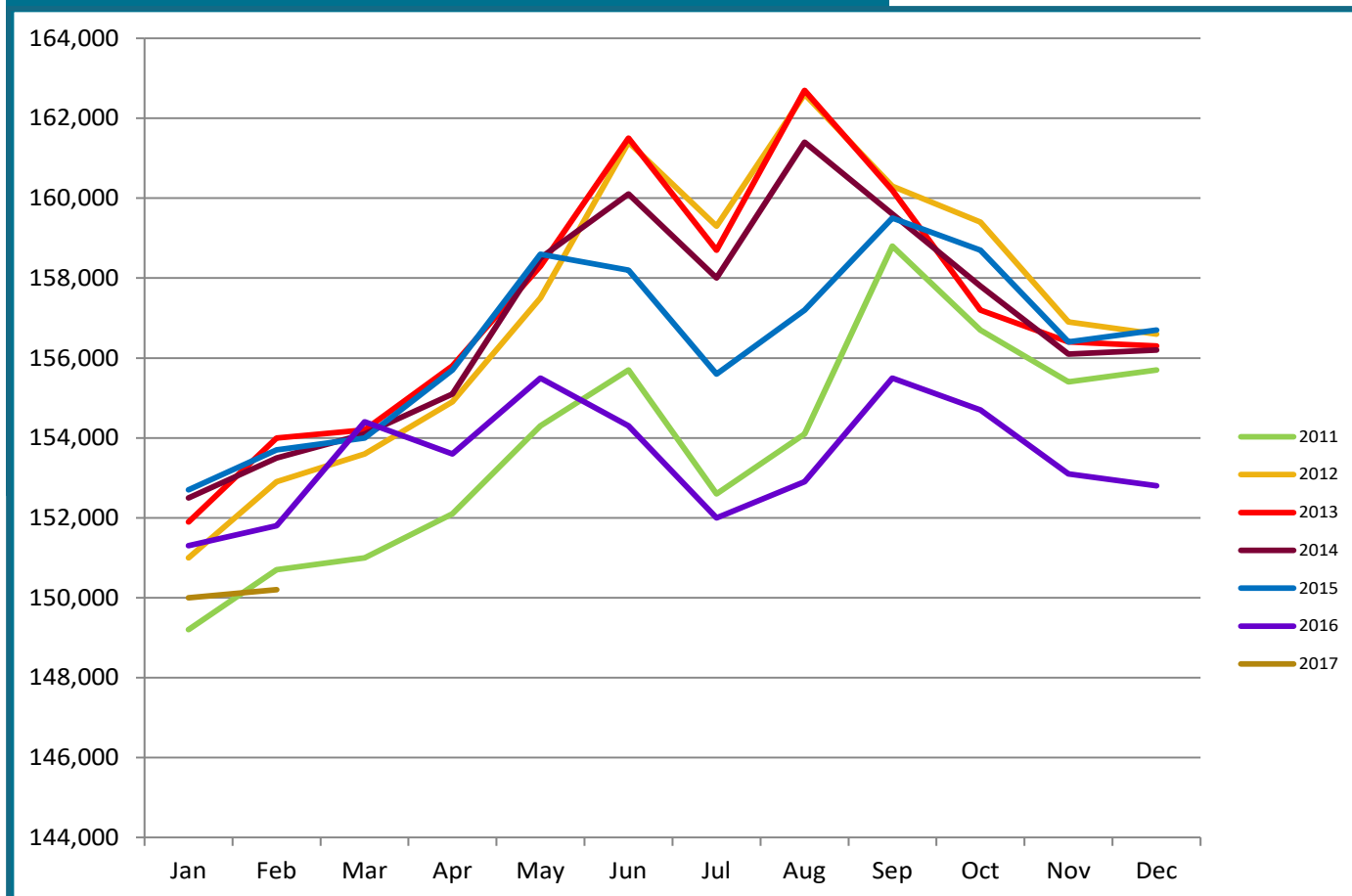
Total jobs in Anchorage
February 2017 (preliminary)

The Goods Producing category lost 1,400 jobs YTD (-12.0%). The Mining & Logging industry (which includes Oil & Gas employment) continues to decline locally and is showing 900 fewer jobs (-25.7%). Construction is down 500 jobs YTD (-7.8%), while Manufacturing remains steady compared to YTD 2016.

Services Providing industries as a sector have neither lost or gained jobs during the first two months of 2017. Categories showing increases include Health Care up 600 jobs (+3.1%), and Leisure & Hospitality (Tourism) up 100 jobs (+0.6%). Services Providing industries showing losses so far in 2017 include Trade/Transportation/Utilities (TTU) down 500 jobs (-1.5%), Financial Activities down 400 jobs (-5.2%), Professional & Business Services down 300 jobs (-1.6%), and Other Services down 400 jobs (-6.7%).

ANCHORAGE EMPLOYMENT

Municipality of Anchorage 2011-Present



GOODS PRODUCING JOBS

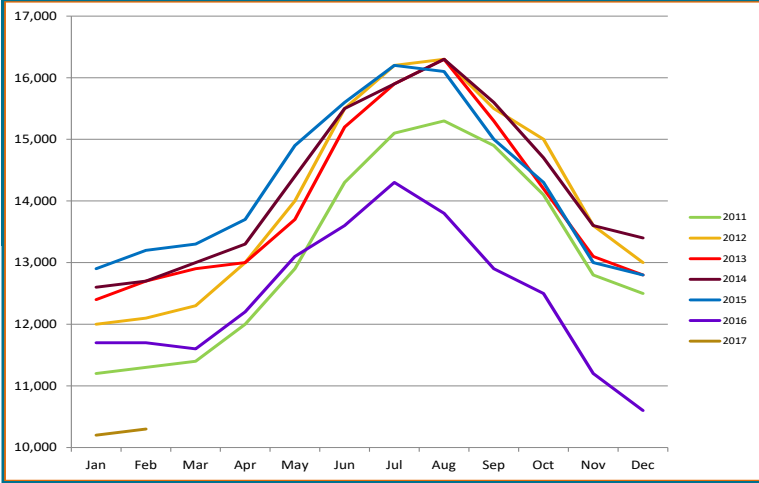
CONSTRUCTION WORK, MINING, OIL & GAS PRODUCTION, MANUFACTURING

Losses in the number of Goods Producing jobs in Anchorage continue to lead the overall downward trend that began in early 2016. The year to date average of 10,300 is 1,400 (-12.0%) fewer jobs than the same period in 2016. A decrease of 900 (-25.7%) jobs in the Mining & Logging industry, which includes Oil & Gas employment. YTD Construction employment is down 500 (-7.8%) jobs. Manufacturing is flat at 1,800 jobs. Total Anchorage Goods Producing employment are now tracking at record lows for the last decade.

The Oil & Gas sector YTD job total shows 700 (-21.2%) fewer jobs so far this year compared to 2016 YTD. Statewide, Oil & Gas industry YTD employment is down 3,200 jobs (-24.8%) compared to the same period in 2016. While oil markets continue to show some volatility, prices in the high \$40s to low \$50s seem to be generating some movement toward renewed investments in Alaska's oil patch, though at extremely modest levels so far. In the new normal that is now in place, even slight increases in investment are important. State fiscal policy issues such as oil taxation and credits will need to be finalized before there can be an expectation of any significant renewal of investments by the private sector in Alaska's oil patch.

The Construction industry, as noted earlier, is showing 500 YTD job losses compared to the same period in 2016. Anchorage building permit application values, a measure of interest in construction, have reached \$89.3 million through the March 17th reporting period, 13 percent above the \$79 million at this point last year. The recent announcements of the \$16 million Hyatt Place Hotel, \$1.2 million Dimond Animal Hospital, as well as the \$2.6 million Dave & Busters are all welcome news to a very tight construction market.

GOODS PRODUCING JOBS
Municipality of Anchorage 2011-Present



Those jobs that are specifically tied to production, not those which support the production or maintenance of the production jobs.

In Anchorage:

10,300
GOODS PRODUCING JOBS
February 2017 (preliminary)

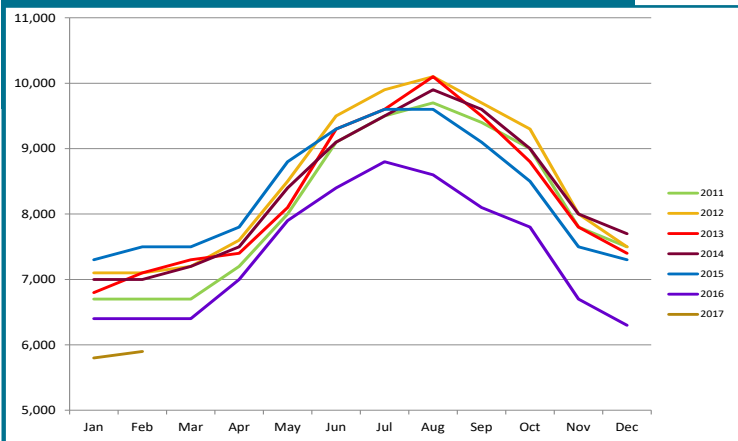


5,900
CONSTRUCTION JOBS
February 2017 (preliminary)

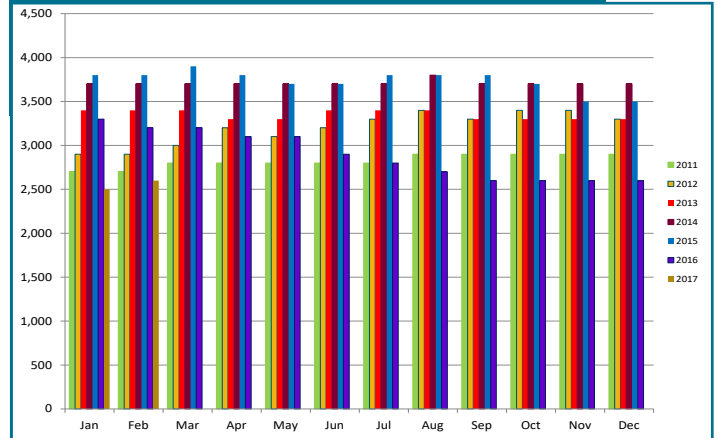


2,600
OIL & GAS JOBS
February 2017 (preliminary)

CONSTRUCTION EMPLOYMENT
Municipality of Anchorage 2011-Present



OIL & GAS EMPLOYMENT
Municipality of Anchorage 2011-Present



SERVICES PROVIDING JOBS

ENGINEERING, RETAIL, TOURISM, HEALTH CARE, ETC.

Services Providing jobs in Anchorage totaled 139,900 for February.

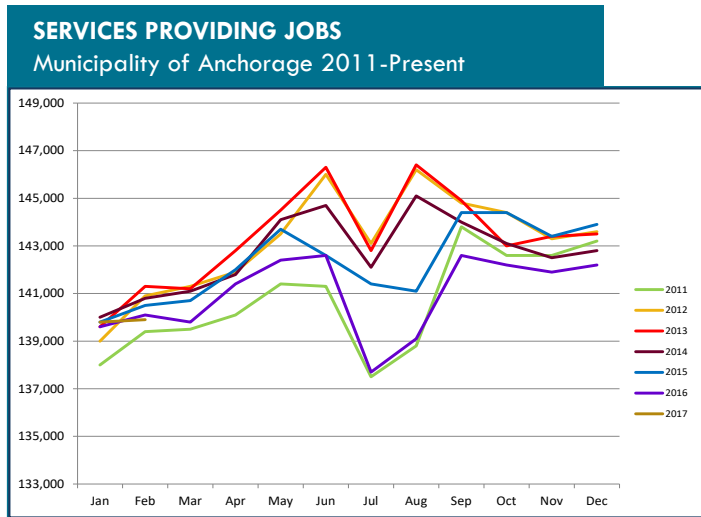
Overall, the Services Providing sector YTD average is flat compared to YTD 2016.

The Trade/Transportation/Utilities (TTU) industry sector is down 500 jobs (-1.5%) so far this year. The YTD employment average in Wholesale Trade and Transportation/Utilities is flat so far this year. The Retail Trade sector, a subset of the TTU industry, is down slightly by 400 jobs (-2.3%) YTD compared to 2016 YTD.

The Government jobs monthly average in Anchorage is down 300 jobs YTD from 2016. Federal Government positions are down 200 (-2.3%). The State Government sector is averaging 400 (-3.8%) fewer jobs than at this point last year. Total State government employment is down 1,000 (-4.0%) YTD. Municipality of Anchorage positions have increased by 200. State Education jobs in Anchorage, a subset of State Government, are down 200 jobs YTD.

HEALTH CARE EMPLOYMENT

Employment in the Health Care sector continues to do well, with 600 (+3.1%) more jobs over 2016 YTD. This sector began a significant run up in job growth in mid-2016. This trend appears to be on a similar track in 2017. As noted in AEDC's 2016 Economic Forecast report, this sector will be one of the high points in a down year for job growth.

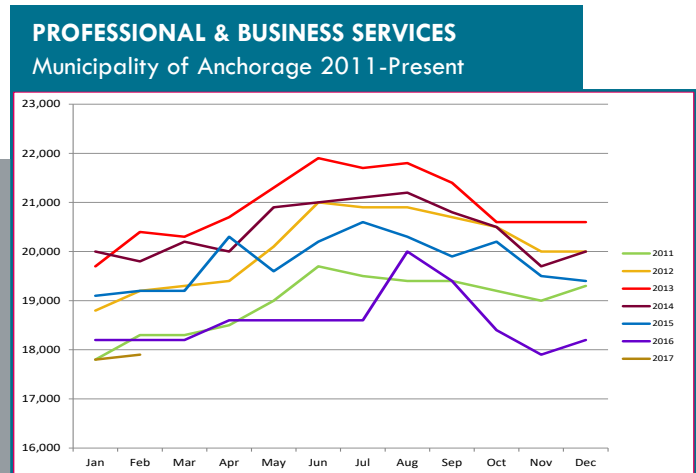
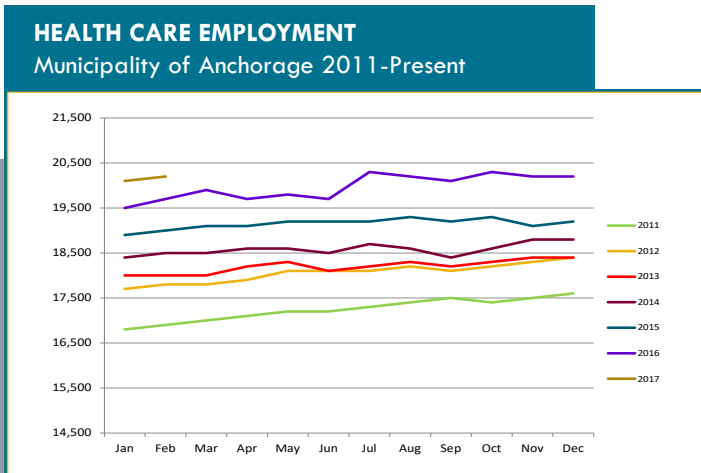


PROFESSIONAL & BUSINESS SERVICES

CONSULTING, ENGINEERING, ARCHITECTURE, LEGAL SERVICES, ACCOUNTING, SCIENTIFIC RESEARCH, WASTE MANAGEMENT & ADMINISTRATIVE SERVICES.

This category includes consulting, engineering, architecture, legal services, accounting, scientific research, waste management & administrative services.

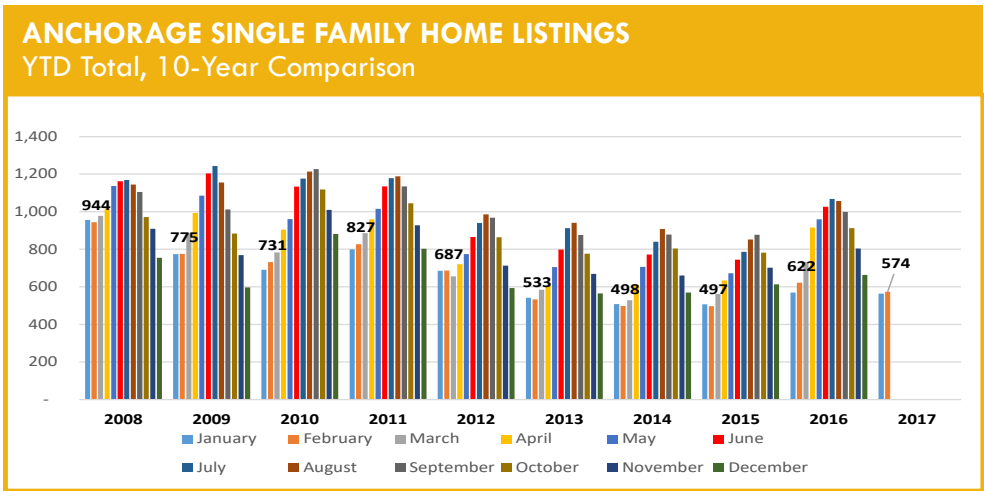
Professional and business services losses seem to be moderating with YTD losses of 300 jobs (-1.6%) compared to 2016. Nonexistent state capital budgets, continuing lack of major capital investments by most oil field companies give clear insight to the cause of this industry's decreases. Tougher times in this industry will continue through 2017.



ANCHORAGE HOUSING

SINGLE FAMILY HOME LISTINGS

February data from Anchorage Multiple Listing Service shows that inventories of homes for sale, at 574 in Anchorage, were down 7.7 percent compared to February of last year, the sixth-highest inventory level for this month in the last 10 years. The Anchorage housing market remains a relatively balanced market of buying and selling opportunities.



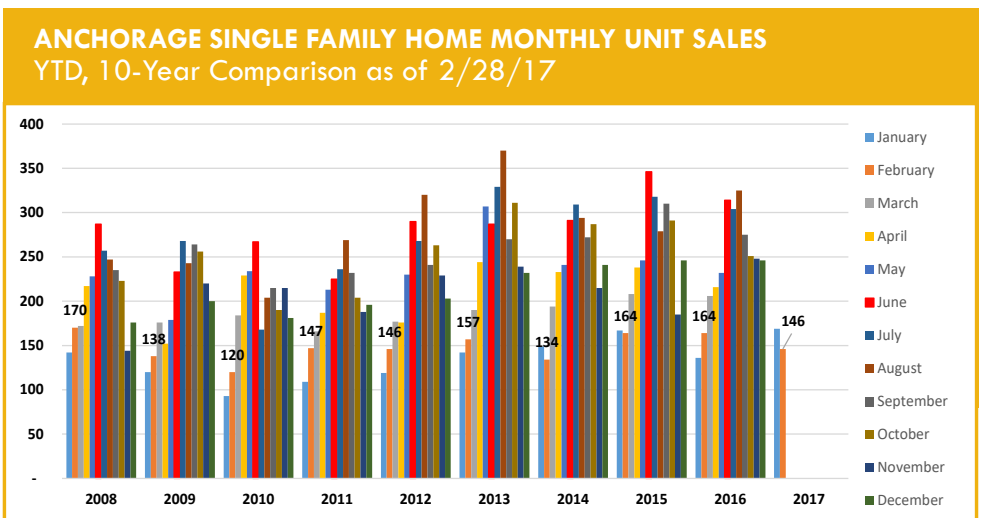
Source: Anchorage MLS

146

Single family home unit sales, February 2017

SINGLE FAMILY HOME MONTHLY UNIT SALES

Anchorage monthly sales of single family homes in February were the fourth-best for the month in the last 10 years. 148 units were sold, a 10.8 percent decrease compared to February 2016.



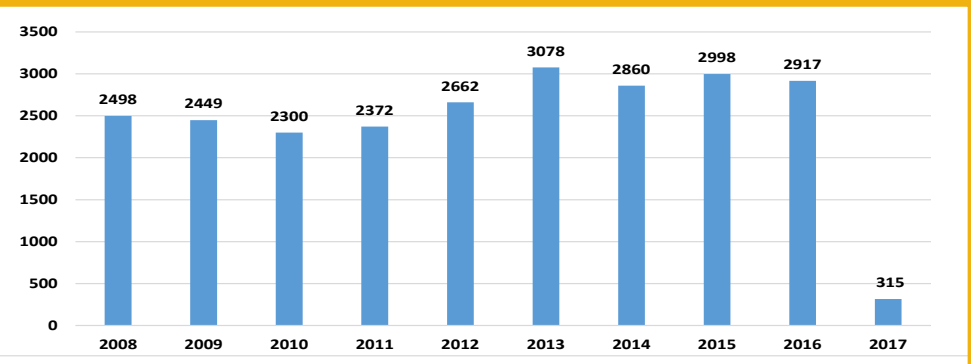
Source: Anchorage MLS

ANCHORAGE HOUSING, CONT.


SINGLE FAMILY HOME YTD TOTAL UNIT SALES

YTD sales for the first two months of 2017 are slightly ahead of the same period in 2016 with 317 units sold so far in 2017, up 5 percent over last year. It should be noted that January sales, at 169 units sold, were the best totals for that month in the last 12 years.

ANCHORAGE SINGLE FAMILY TOTAL UNIT SALES YTD Total, 10-Year Comparison as of 2/28/17



Source: Anchorage MLS

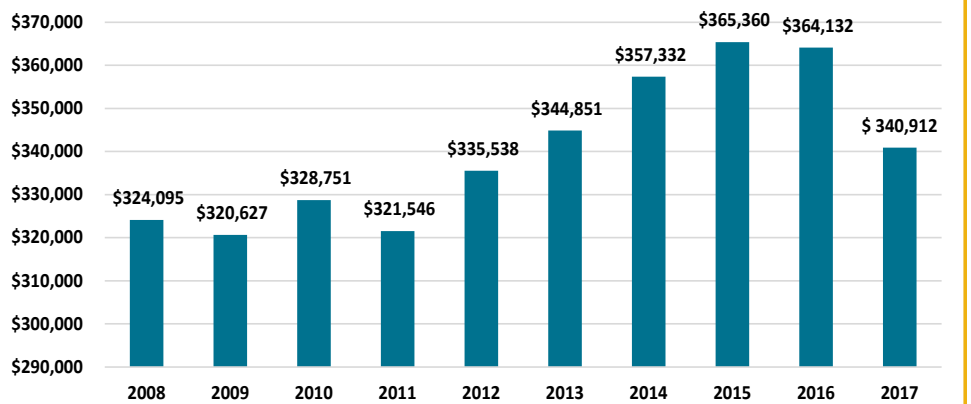


\$340,912
Average home sale price in
Anchoage, 2017 YTD

SINGLE FAMILY HOME AVERAGE SALES PRICE

The average price for a home sold in Anchorage YTD through the end of February stood at \$340,912, down \$9,158 compared to the same period in 2016. While average sales prices can vary widely from month to month, the annual average is another good measure of market health. While down slightly by 2.6 percent, this price still remains near the top end of the 10-year average for this two month period.

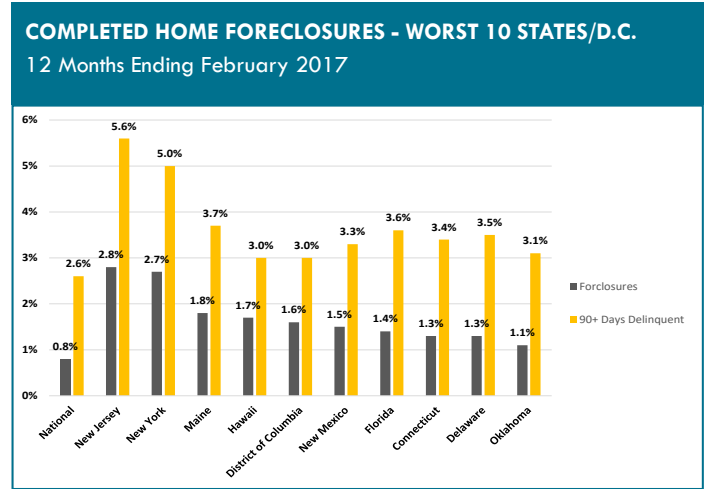
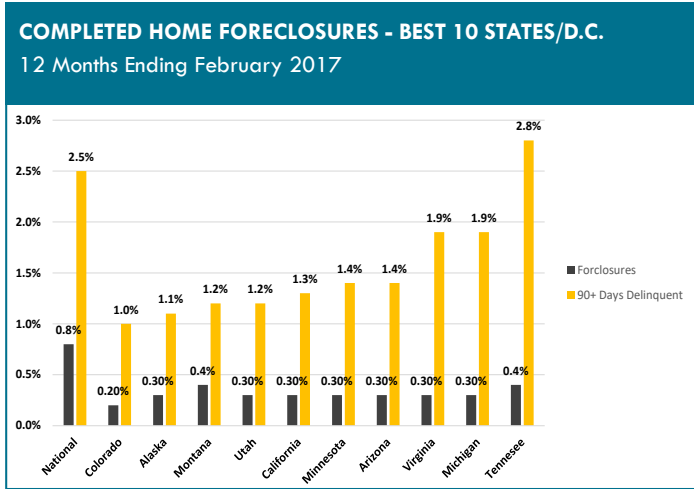
ANCHORAGE SINGLE FAMILY HOME AVG. SALES PRICE YTD, 10-Year Comparison as of 2/28/17



Source: Anchorage MLS

ALASKA FORECLOSURES

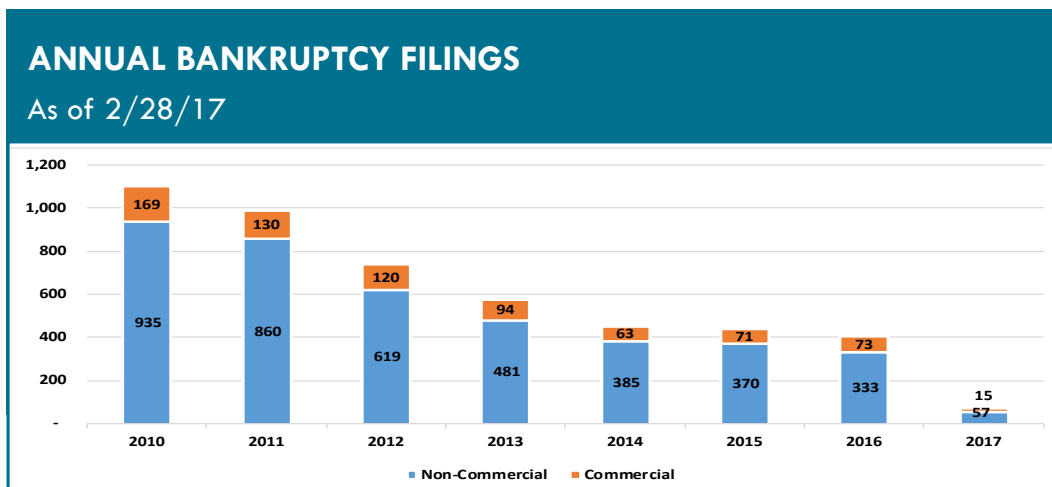
Alaska continues to show solid indicators in this category. Out of the 50 states and District of Columbia, Alaska is in a seven-way tie for last place at 0.3 percent of all active mortgages in foreclosure for the 12 months ending December 31st, 2016. The national average was 0.8 percent. Another positive indicator is Alaska's serious delinquency rate, at 1.1 percent of all mortgages statewide, which ranks 50th in the nation — well below the national average of 2.5 percent. Current foreclosure and serious delinquency data shows that the Alaska housing market remains solidly healthy as of this report.



Source: CoreLogic

ALASKA BANKRUPTCIES

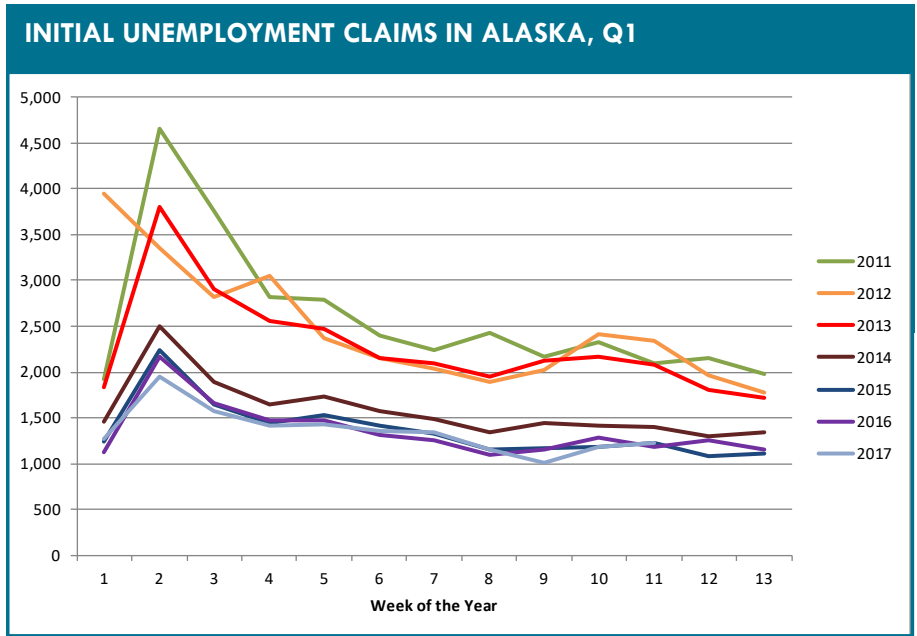
According to recently released data from the American Bankruptcy Institute, Alaska bankruptcies remain at near record lows. For the two months ending February 28th, Alaska ranked 51st out of the 50 states and District of Columbia with a per capita rate of 0.62 bankruptcies per 1,000 Alaskans. This compares to the national per capita rate of 2.19 bankruptcies per 1,000 Americans. The total number of bankruptcies in Alaska YTD, at 72, are up by 33 percent compared to the same timeframe in 2016. As measured by this metric, the financial health of Alaska's citizens and businesses continues to demonstrate solid results.



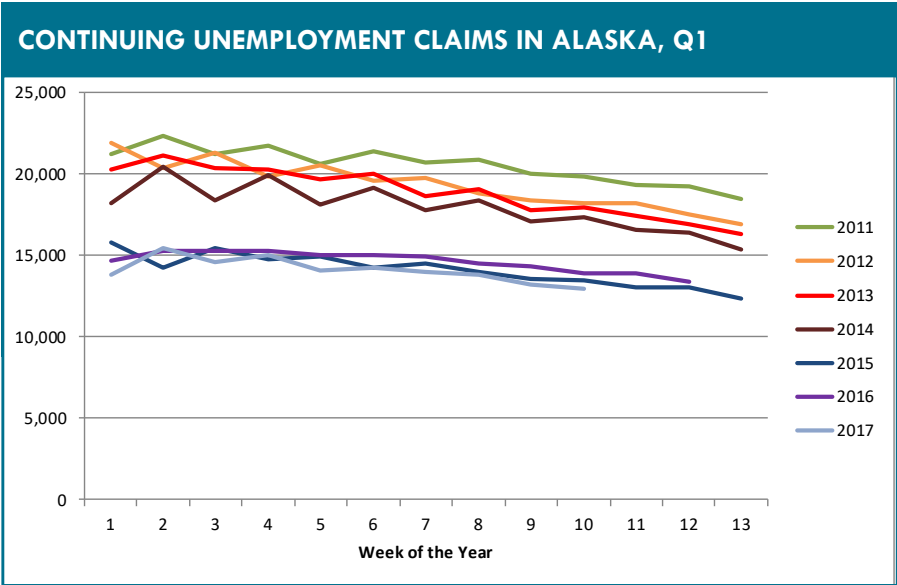
Source: American Bankruptcy Institute

UNEMPLOYMENT CLAIMS

Initial unemployment claim applications can be interpreted as a proxy for layoffs. They tend to fall as job growth accelerates. As was the case in 2016, weekly totals in 2017 continue to track near 2015 levels, still well below recent historic highs seen in 2011. This continuing low range for initial unemployment claims has been a silver lining in the recent bad news for the Alaska and Anchorage economies, even in the face of the recent significant job losses in Oil & Gas, Construction and Professional and Business Services sectors. We continue to be concerned about how long this trend will last. Questions remain as to whether the full ripple effect of recent goods producing industry layoffs has been fully realized in the Services sector.



Continuing unemployment claims figures help to show how well unemployed workers are re-entering the workforce. This total does not include workers receiving extended benefits from the federal government. As we noted in last year's reports, the trend in weekly numbers in 2017 continues to track slightly above 2015 for the same time period, but still remains well below recent historic highs reported in 2011. This is another indicator of some continuing momentum to be found in the Alaska economy, though we still expect to see a slowing of this momentum at some point this year. If there is an unexpected increase in the rate of job losses in 2017, lack of job availability will likely increasingly affect the ability to find jobs for those workers included in this metric. This could result in an increase in the numbers of workers receiving unemployment benefits in the long term, though how significant that increase will be is difficult to project.



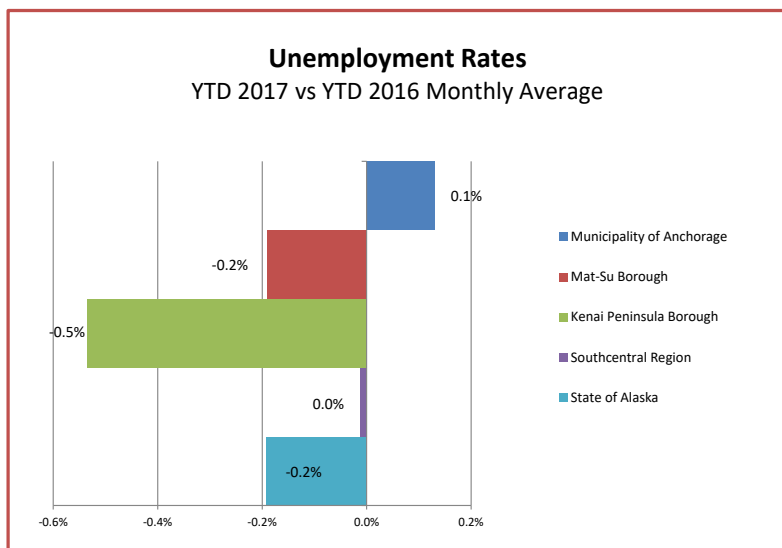
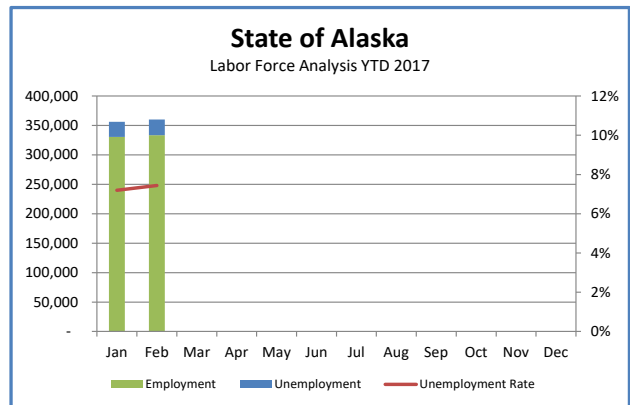
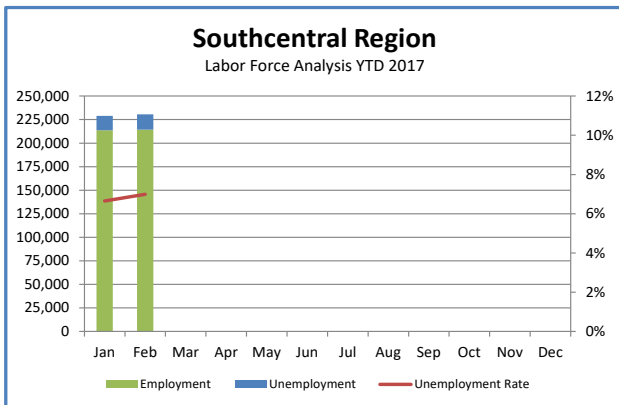
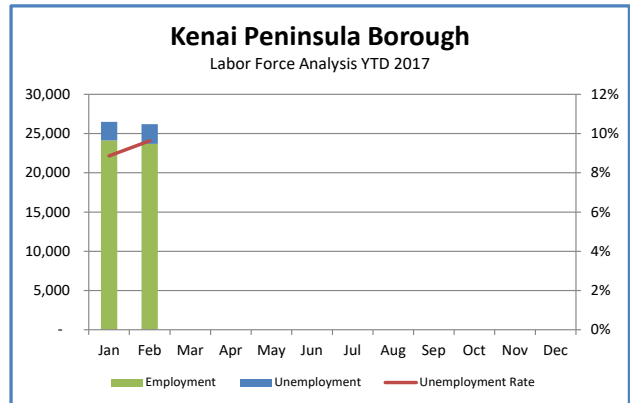
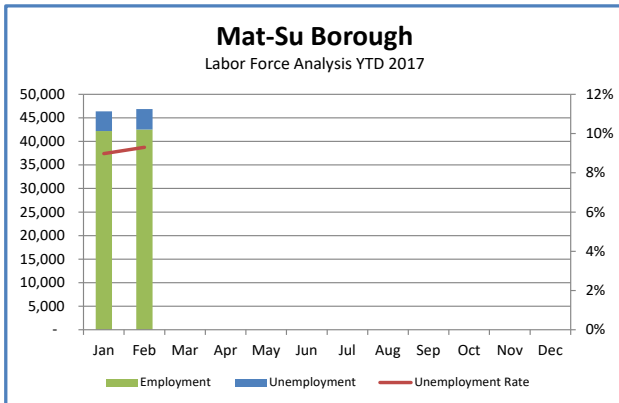
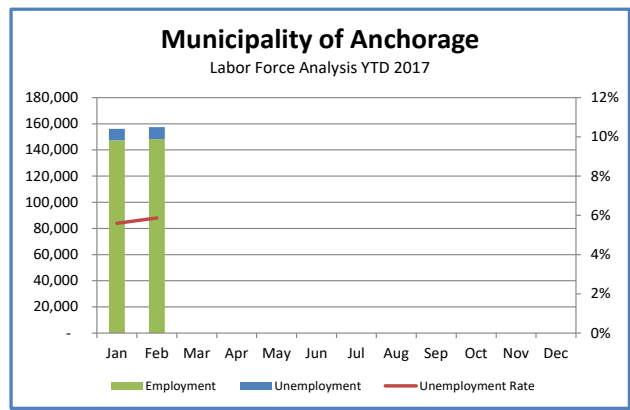
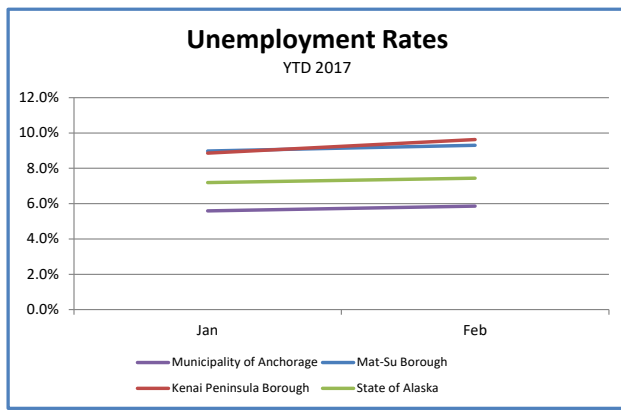
UNEMPLOYMENT ANALYSIS (YTD, 2017)

Anchorage, Mat-Su, Kenai Peninsula Borough

	Jan	Feb	Mar	Apr	May	Jun	Jul	Aug	Sep	Oct	Nov	Dec	17 YTD Avg	16 YTD Avg	17 vs 16 (YTD)	
Municipality of Anchorage	Revised	Preliminary														
Labor Force	156,099	157,422											156,761	157,214		(454)
Employment	147,369	148,192											147,781	148,369		(588)
Unemployment	8,730	9,230											8,980	8,846		135
Unemployment Rate	5.6%	5.9%											5.7%	5.6%		0.1%
Mat-Su Borough																
Labor Force	46,387	46,876											46,632	45,022		1,610
Employment	42,223	42,516											42,370	40,822		1,548
Unemployment	4,164	4,360											4,262	4,201		62
Unemployment Rate	9.0%	9.3%											9.1%	9.3%		-0.2%
Kenai Peninsula Borough																
Labor Force	26,481	26,207											26,344	26,507		(163)
Employment	24,134	23,683											23,909	23,915		(6)
Unemployment	2,347	2,524											2,436	2,593		(157)
Unemployment Rate	8.9%	9.6%											9.2%	9.8%		-0.5%
Southcentral Region																
Labor Force	228,967	230,505											229,736	228,743		993
Employment	213,726	214,391											214,059	213,105		954
Unemployment	15,241	16,114											15,678	15,639		39
Unemployment Rate	6.7%	7.0%											6.8%	6.8%		0.0%
State of Alaska																
Labor Force	356,084	360,285											358,185	357,042		1,143
Employment	330,459	333,483											331,971	330,227		1,744
Unemployment	25,625	26,802											26,214	26,815		(601)
Unemployment Rate	7.2%	7.4%											7.3%	7.5%		-0.2%

***Note:** These numbers reflect employment, unemployment, etc. for only those people that are residence of the specified City/Region, thus are not inclusive of people who commute to another city for their jobs.

(Ex: Someone lives in Wasilla but works in Anchorage. They would be counted in the Mat-Su Borough's labor force and employment numbers. not the Municipality of Anchorage numbers)



INDUSTRY EMPLOYMENT ESTIMATES 2017

Municipality of Anchorage

Federal Data Series	CES	CES	CES	CES	CES	CES	CES	CES	CES	CES	CES	CES	CES	CES	CES	CES	CES	2017 YTD Avg.	2016 YTD Avg.	2017 vs 2016 YTD Change	% Change
	Jan Revised	Feb Preliminary	Mar	Apr	May	Jun	Jul	Aug	Sep	Oct	Nov	Dec									
% Change from same month year ago	-0.9%	-1.1%	-100.0%	-100.0%	-100.0%	-100.0%	-100.0%	-100.0%	-100.0%	-100.0%	-100.0%	-100.0%									
Total Nonfarm	150,000	150,200																151,600	151,600	-1,500	-1.0%
Goods Producing	10,200	10,300																10,300	11,700	-1,400	-12.0%
Mining and Logging ²	2,600	2,600																2,600	3,500	-900	-25.7%
Oil & Gas	2,500	2,600																2,600	3,300	-700	-21.2%
Construction	5,800	5,900																5,900	6,400	-500	-7.8%
Manufacturing	1,800	1,800																1,800	1,800	0	0.0%
Services Providing	139,800	139,900																139,900	139,900	0	0.0%
Trade/Transportation/Utilities	32,200	32,000																32,100	32,600	-500	-1.5%
Wholesale Trade	4,700	4,700																4,700	4,700	0	0.0%
Retail Trade	17,300	17,000																17,200	17,600	-400	-2.3%
Trans/Warehouse/Utilities	10,300	10,400																10,400	10,400	0	0.0%
Information	4,000	4,000																4,000	4,000	0	0.0%
Financial Activities	7,300	7,300																7,300	7,700	-400	-5.2%
Professional & Business Svcs	17,800	17,900																17,900	18,200	-300	-1.6%
Educational & Health Services	26,500	26,600																26,600	25,200	1,400	5.6%
Health Care	20,100	20,200																20,200	19,600	600	3.1%
Leisure & Hospitality	17,000	17,000																17,000	16,900	100	0.6%
Accommodation	3,100	3,100																3,100	3,200	-100	-3.1%
Food Svcs & Drinking Places	11,600	11,400																11,500	11,400	100	0.9%
Other Services	5,600	5,600																5,600	6,000	-400	-6.7%
Government	29,400	29,600																29,500	29,800	-300	-1.0%
Federal Government	8,500	8,500																8,500	8,700	-200	-2.3%
State Government	10,000	10,200																10,100	10,500	-400	-3.8%
State Education	2,500	2,700																2,600	2,800	-200	-7.1%
Local Government	10,900	10,900																10,900	10,700	200	1.9%
Local Education	8,000	8,000																8,000	7,900	100	1.3%

The Current Employment Statistics (CES) survey, is based on a survey of approximately 146,000 businesses and government agencies representing **The Quarterly Census of Employment and Wages (QCEW)** program publishes a quarterly count of employment and wages reported by employers covering 98 percent of Nonfarm Wage & Salary excludes self-employed workers, fishers, domestics, and unpaid family workers.

- All totals are seasonally non-adjusted totals.

- Government includes employees of public school systems and the University of Alaska.

- Source: Alaska Department of Labor and Workforce Development, Research and Analysis Section

* Note: The above numbers are representative of all people employed in the Municipality of Anchorage; this is inclusive of workers who claim residence outside of the Municipality of Anchorage. (Ex: someone who lives in the Mat-Su, but works in Anchorage would be included in these numbers)

Quick Comparisons	
17 vs 16 February	-1,600 -1.1%
17 vs 16 1st Qtr	-1,500 -1.0%
17 vs 16 2nd Qtr	
17 vs 16 3rd Qtr.	
17 vs 16 4th Qtr.	



Heidi Drygas
Commissioner

www.labor.alaska.gov



P.O. Box 111149
Juneau, AK 99811-1149
907.465.2700
commissioner.labor@alaska.gov

Press Release

COMMISSIONER'S OFFICE

FOR IMMEDIATE RELEASE
March 24, 2017

No. 17-16

For more information: **Conor Bell, Economist**
907-465-6037, Conor.Bell@Alaska.Gov

Unemployment Rate at 6.4 Percent in February

JUNEAU, Alaska—Alaska's seasonally adjusted unemployment rate was 6.4 percent in February, essentially unchanged from January's 6.5 percent. The comparable national rate was 4.7 percent. The state's seasonally adjusted rate remained steady throughout 2016 and early 2017 despite falling employment.

Preliminary estimates show employment was down by 6,500, or 2.0 percent, compared to the previous February. Substantial job losses continued in oil, construction, state government, and professional and business services, which is tied to oil and construction activity. Retail trade recorded significant losses, suggesting declining consumer spending. The only industries with notable growth were health care and local government.

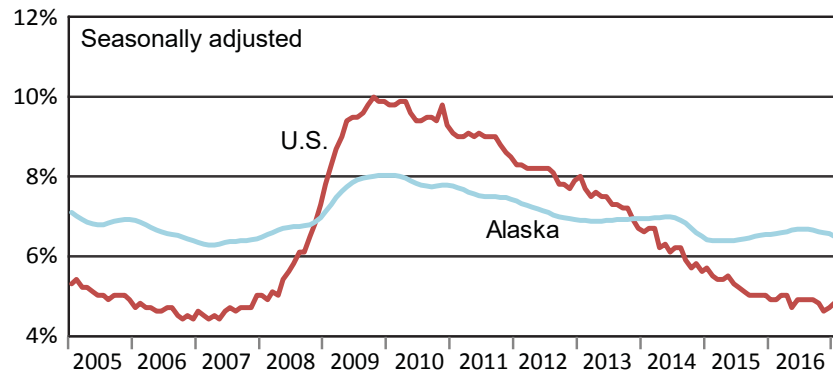
February's not-seasonally adjusted unemployment rate was 7.4 percent, up two-tenths of a percentage point from January, which is a typical seasonal increase.

Across the state, unemployment rates fell in 10 boroughs and census areas, rose in 18, and remained unchanged in one. Denali Borough had the highest unemployment rate at 21.4 percent, and Aleutians East Borough had the lowest rate at 1.7 percent. Regions with winter fisheries had the lowest rates.

###

Unemployment Rates, Alaska and U.S.

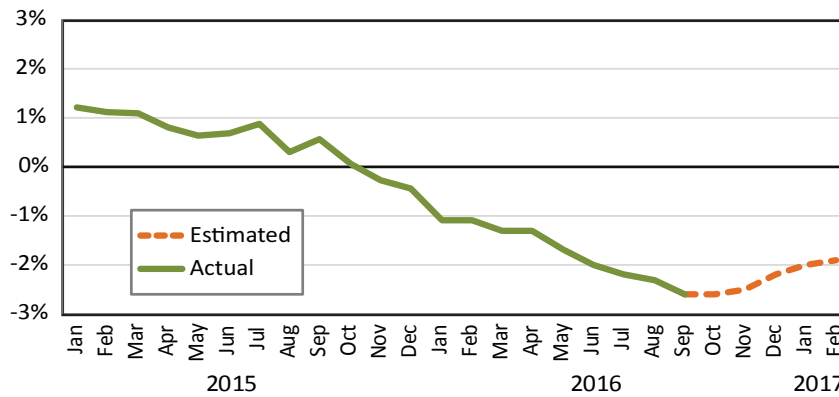
January 2005 to February 2017



Sources: Alaska Department of Labor and Workforce Development, Research and Analysis Section; and U.S. Bureau of Labor Statistics

Wage and Salary Employment

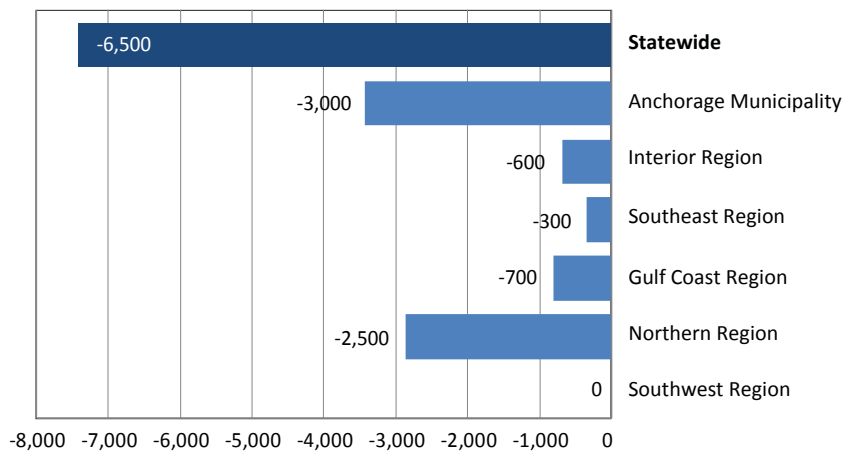
Percent change from same month the previous year



Note: Actual employment counts through June 2016 are from the benchmarked Current Employment Statistics and Quarterly Census of Employment and Wages employment series. Estimated employment counts from July through December are based on a forecast of the QCEW series.

Regional Employment

Change from January 2016 to February 2017



Sources: Quarterly Census of Employment and Wages; and Current Employment Statistics

Employment By Industry

	Average Monthly Employment			Compared to Feb 2016	
	Feb 2017 ¹	Jan 2017 ¹	Feb 2016 ²	Change	Percent Chg
Total Nonfarm Employment	315,200	310,400	321,700	-6,500	-2.0%
Total Private	233,900	230,200	239,500	-5,600	-2.3%
Mining and Logging	12,600	12,500	15,500	-2,900	-18.7%
Oil and Gas	10,200	10,100	12,700	-2,500	-19.7%
Construction	13,100	12,800	14,100	-1,000	-7.1%
Manufacturing	13,100	11,300	13,500	-400	-3.0%
Trade, Transportation and Utilities	60,500	60,600	61,600	-1,100	-1.8%
Wholesale	6,200	6,200	6,400	-200	-3.1%
Retail	34,900	35,100	35,500	-600	-1.7%
Transportation, Warehousing and Utilities	19,400	19,300	19,700	-300	-1.5%
Information	6,300	6,200	6,300	0	0.0%
Financial Activity	11,700	11,700	11,600	100	0.9%
Professional and Business Services	26,700	26,300	27,700	-1,000	-3.6%
Education and Health	48,800	48,200	48,200	600	1.2%
Health Care	35,700	35,700	35,000	700	2.0%
Leisure and Hospitality	30,400	29,900	30,300	100	0.3%
Other Services	10,700	10,700	10,700	0	0%
Total Government	81,300	80,200	82,200	-900	-1.1%
Federal	14,600	14,500	14,700	-100	-0.7%
State	24,200	23,800	25,300	-1,100	-4.3%
Local	42,500	41,900	42,200	300	0.7%

¹Employment estimates for 2017 are based on a forecast of Quarterly Census of Employment and Wages (QCEW) data.

²Employment estimates for 2016 are from the benchmarked Current Employment Statistics employment data.

Labor Force by Borough and Census Area, Not Seasonally Adjusted¹

	Civilian Labor Force ²			Unemployed					
				Number			Rate		
	2/17 ^P	1/17	2/16	2/17 ^P	1/17	2/16	2/17 ^P	1/17	2/16
Alaska	360,285	356,084	357,339	26,802	25,625	26,762	7.4	7.2	7.5
Anchorage/Mat-Su Region	204,298	202,486	202,173	13,590	12,897	13,036	6.7	6.4	6.4
Anchorage, Municipality	157,422	156,099	155,841	9,230	8,730	8,815	5.9	5.6	5.7
Matanuska-Susitna Borough	46,876	46,387	46,332	4,360	4,167	4,221	9.3	9.0	9.1
Gulf Coast Region	37,110	36,985	36,967	3,289	3,112	3,439	8.9	8.4	9.3
Kenai Peninsula Borough	26,207	26,481	26,105	2,524	2,347	2,624	9.6	8.9	10.1
Kodiak Island Borough	6,645	6,278	6,625	299	344	324	4.5	5.5	4.9
Valdez-Cordova Census Area	4,258	4,226	4,237	466	421	491	10.9	10.0	11.6
Interior Region	51,773	51,247	51,027	3,990	3,904	3,881	7.7	7.6	7.6
Denali Borough	632	602	602	135	124	123	21.4	20.6	20.4
Fairbanks North Star Borough	45,652	45,288	45,067	2,979	2,970	2,881	6.5	6.6	6.4
Southeast Fairbanks Census Area	3,023	2,947	2,963	361	349	380	11.9	11.8	12.8
Yukon-Koyukuk Census Area	2,466	2,410	2,395	515	461	497	20.9	19.1	20.8
Northern Region	10,493	10,519	11,294	1,269	1,178	1,235	12.1	11.2	10.9
Nome Census Area	3,801	3,777	4,082	516	479	507	13.6	12.7	12.4
North Slope Borough	3,987	4,015	4,317	261	249	252	6.5	6.2	5.8
Northwest Arctic Borough	2,705	2,727	2,895	492	450	476	18.2	16.5	16.4
Southeast Region	35,449	35,334	34,963	2,640	2,597	2,910	7.4	7.3	8.3
Haines Borough	905	879	916	114	118	154	12.6	13.4	16.8
Hoonah-Angoon Census Area	990	980	997	176	172	207	17.8	17.6	20.8
Juneau, City and Borough	16,991	17,040	16,644	861	850	862	5.1	5.0	5.2
Ketchikan Gateway Borough	6,476	6,548	6,411	500	475	568	7.7	7.3	8.9
Petersburg Borough	1,369	1,344	1,355	146	152	164	10.7	11.3	12.1
Prince of Wales-Hyder Census Area	2,745	2,683	2,739	379	376	435	13.8	14.0	15.9
Sitka, City and Borough	4,140	4,024	4,066	224	212	237	5.4	5.3	5.8
Skagway, Municipality	589	600	605	125	132	154	21.2	22.0	25.5
Wrangell, City and Borough	1,024	1,014	1,013	89	89	101	8.7	8.8	10.0
Yakutat, City and Borough	220	222	217	26	21	28	11.8	9.5	12.9
Southwest Region	21,164	19,515	20,916	2,024	1,938	2,262	9.6	9.9	10.8
Aleutians East Borough	3,478	2,538	3,413	60	61	77	1.7	2.4	2.3
Aleutians West Census Area	5,141	4,602	5,026	108	126	119	2.1	2.7	2.4
Bethel Census Area	6,978	7,033	6,904	971	934	1,051	13.9	13.3	15.2
Bristol Bay Borough	246	233	237	34	33	34	13.8	14.2	14.3
Dillingham Census Area	2,053	1,951	2,015	196	183	207	9.5	9.4	10.3
Kusilvak Census Area	2,718	2,622	2,785	570	518	690	21.0	19.8	24.8
Lake and Peninsula Borough	550	536	536	85	83	84	15.5	15.5	15.7

P = Preliminary. As more information becomes available, data are revised every month for the previous month and again at the end of every calendar year.

Note: The official definition of unemployment excludes anyone who has not made an active attempt to find work in the four-week period up to and including the week that includes the 12th of the reference month. Many in rural Alaska do not meet the definition because they have not conducted an active job search due to the scarcity of employment opportunities.

¹Unemployment rates that are not seasonally adjusted should not be compared with those that are.

²The labor force is the sum of the unemployed and the employed.

Source: Alaska Department of Labor and Workforce Development, Research and Analysis Section; and U.S. Bureau of Labor Statistics

