



Anchorage Employment Report

CO-SPONSORED BY:



TABLE OF CONTENTS

EXECUTIVE SUMMARY	2
GOODS PRODUCING JOBS SUMMARY	3
SERVICES PROVIDING JOBS SUMMARY	4
HEALTH CARE SNAPSHOT	4
PROFESSIONAL & BUSINESS SERVICES SNAPSHOT	5
ANCHORAGE HOUSING	6
ALASKA FORECLOSURES & BANKRUPTCIES.....	7
UNEMPLOYMENT CLAIMS	8
UNEMPLOYMENT ANALYSIS OF SOUTHCENTRAL REGION (TABLE).....	9
LABOR FORCE ANALYSIS CHARTS.....	10
ANCHORAGE EMPLOYMENT ESTIMATES TABLE.....	11
ALASKA EMPLOYMENT ESTIMATES TABLE	11
STATE OF ALASKA PRESS RELEASE.....	12

All data referenced in this employment report is from the State of Alaska, Dept. of Labor & Workforce Development website: www.laborstats.alaska.gov and from the U.S. Bureau of Labor Statistics: www.bls.gov.

Report compiled by Anchorage Economic Development Corp. Research Department.

Report generously sponsored by First National Bank Alaska and Alaska Communications.

If you are interested in learning more about this data or are interested in how AEDC can help you develop a report, call AEDC at 907.258.3700.

EXECUTIVE SUMMARY

MONTHLY UNEMPLOYMENT

The not seasonally adjusted unemployment rate for Anchorage in April was 5.7 percent, down 0.1 percent from the March revised rate. **This is 1.6 percent above the national not seasonally adjusted rate of 4.1 percent and below the statewide not seasonally adjusted rate of 6.6 percent.** The April unemployment rate for Anchorage was 0.4 percent higher than it was in April 2016. *As always, it should be noted that these are preliminary survey figures for July and will be revised next month.*

YEAR-TO-DATE UNEMPLOYMENT

The 2017 average year-to-date (YTD) not seasonally adjusted unemployment rate in Anchorage was 5.7 percent at the end of April, 0.1 percent higher than at this time last year. **A decrease of 62 in the employment total and 255 in the Anchorage labor force during the YTD period has resulted in the reported unemployment total increasing by 193.** The total number of unemployed people in Anchorage for the month of April is estimated at 9,058 (those actively looking for jobs,) 890 more than April 2016. In the Mat-Su Borough, the YTD average monthly unemployment rate of 9.0 percent is down 0.3 percent from 2016 YTD while the Kenai Peninsula's unemployment rate of 9.0 has decreased by 0.8 percent during the same period (see the charts on pages 9-10 for more details).

It is important to note that the Anchorage unemployment numbers represent the labor force residing in Anchorage, and do not describe the number of filled positions in Anchorage. The industry employment estimates referenced in the remainder of this report are representative of the number of jobs in the Municipality of Anchorage, regardless of the job holder's place of residency.

ANCHORAGE INDUSTRY EMPLOYMENT ESTIMATES

As for Anchorage industry employment estimates, which includes total jobs in Anchorage held by city residents and commuters, the YTD average for 2017 shows a loss of 1,700 jobs (-1.1%) so far compared to the same period in 2016. The private sector (total jobs minus government jobs) at 121,000 jobs shrunk by 1,600 (-1.3%) jobs during this time, while Government employment at 29,600 jobs has decreased by 100 (-0.3%). Federal jobs are flat so far. State government jobs have decreased by 300 (-2.9%) and Local Anchorage Government jobs have increased by 300 (+2.8%). Please

note that these figures will likely be revised as more data is received and additional analysis is conducted.

The Goods Producing category lost 1,300 jobs YTD (-11.0%). The Mining & Logging industry (which includes Oil & Gas employment) continues to decline locally and is showing 800 fewer jobs (-23.5%). Construction is down 600 jobs YTD (-9.1%), while Manufacturing lost 100 jobs (-5.3%) compared to 2016.

Services Providing industries have lost 300 jobs YTD (-0.2%). Categories showing increases include Health Care, up 400 jobs (+2.0%), and Leisure & Hospitality (Tourism) up 100 (+0.6%). Services Providing industries showing losses so far in 2017 include Retail, down 600 jobs (-3.4%), Trade/Transportation/Utilities (TTU) down 600 jobs (-1.8%), Financial Activities down 400 jobs (-5.2%) and Professional & Business Services, down 300 jobs (-1.6%).

5.7%

April 2017
Unemployment Rate
for Anchorage (preliminary)

5.7%

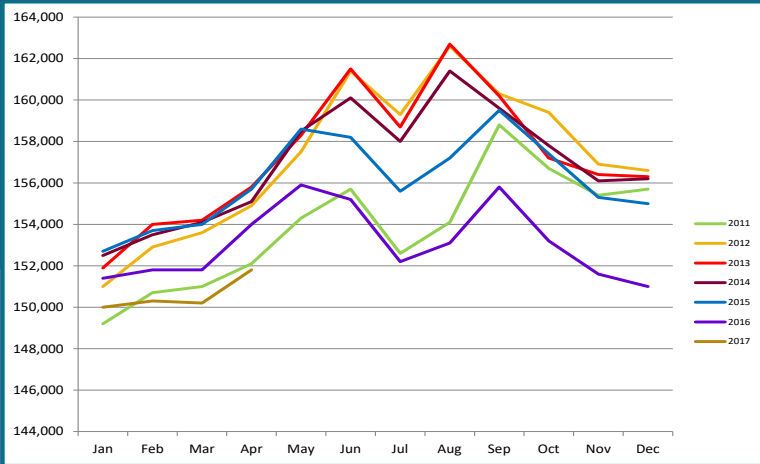
2017 YTD
Unemployment Rate
for Anchorage (preliminary)

151,800

Total jobs in Anchorage
April 2017 (preliminary)

ANCHORAGE EMPLOYMENT

Municipality of Anchorage 2011-Present



GOODS PRODUCING JOBS

CONSTRUCTION WORK, MINING, OIL & GAS PRODUCTION, MANUFACTURING

Losses in the number of Goods Producing jobs in Anchorage continue to lead the overall downward trend 2017 YTD. The year to date average of 10,500 is 1,300 (-11.0%) fewer jobs than the same period in 2016. There was a decrease of 800 (-23.5%) jobs in the Mining & Logging industry, which includes Oil & Gas employment. YTD Construction employment is down 600 (-9.1%) jobs. Manufacturing is down 100 at 1,800 jobs. Total Anchorage Goods Producing employment is now at 2000 employment levels.

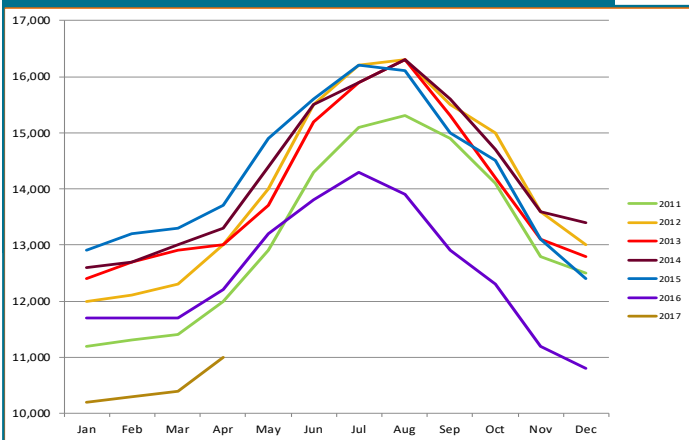
The Oil & Gas sector YTD job total shows 800

(-24.2%) fewer jobs so far this year compared to 2016 YTD, though year-over-year losses seem to be slowing. The statewide Oil & Gas industry YTD employment is down 2,200 jobs (-17.6%) compared to the same period in 2016. The continuing \$45 to \$55 price range of domestic and international oil prices demonstrate the “new normal,” that oil markets will likely be facing in the coming years. Significantly lower prices than the recent historic highs will continue to be held in check by the fracking technological revolution.

Anchorage building permit application values, a measure of interest in construction, have reached \$210 million through the May 12, 2017 reporting period, 34.4% higher than the \$156.6 million at this point last year. Projects submitted for permits are a relatively healthy mix of private sector and government projects.

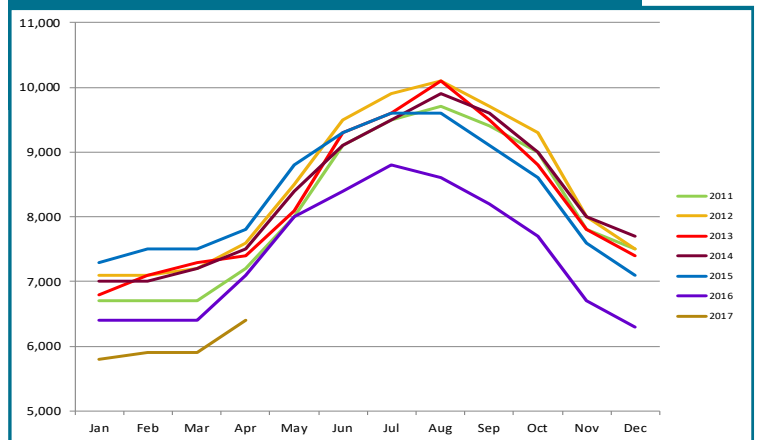
GOODS PRODUCING JOBS

Municipality of Anchorage 2011-Present



CONSTRUCTION EMPLOYMENT

Municipality of Anchorage 2011-Present



Those jobs that are specifically tied to production, not those which support the production or maintenance of the production jobs.



In Anchorage:

11,000

GOODS PRODUCING JOBS

April 2017 (preliminary)



6,400

CONSTRUCTION JOBS

April 2017 (preliminary)



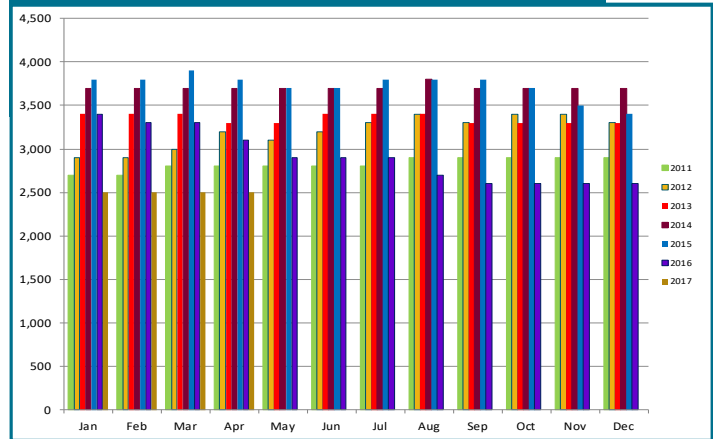
2,500

OIL & GAS JOBS

April 2017 (preliminary)

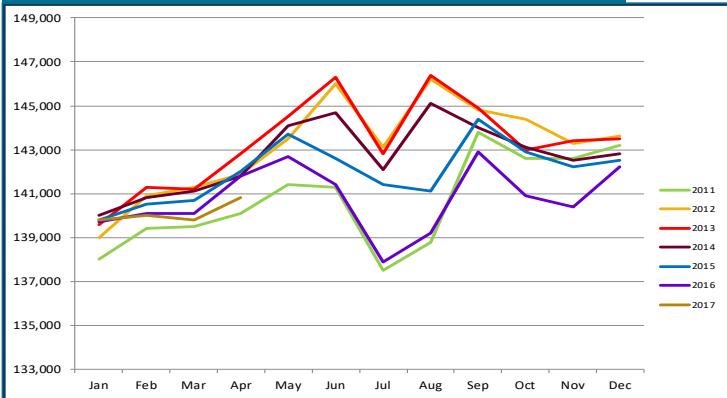
OIL & GAS EMPLOYMENT

Municipality of Anchorage 2011-Present



SERVICES PROVIDING JOBS

Municipality of Anchorage 2011-Present



SERVICES PROVIDING JOBS

ENGINEERING, RETAIL, TOURISM, HEALTH CARE, ETC.

Services Providing jobs in Anchorage totaled 140,800 for March.

Overall, the YTD average for Services Providing Jobs in Anchorage is down 300 (-0.2%) jobs from 2016 YTD.

The Trade/Transportation/Utilities (TTU) industry sector is down 600 jobs (-1.8%) so far this year. The YTD employment average in Wholesale Trade and Transportation/Warehouse/Utilities is flat. The Retail Trade sector, a subset of the TTU industry, is now down by 600 jobs (-3.4%) YTD compared to 2016 YTD.

The Government jobs monthly average in Anchorage is down 100 jobs YTD from 2016. Federal Government positions are flat. The State Government sector is averaging 300 (-2.9%) fewer jobs than at this point last year. Total State government employment is down 1,000 (-4.0%) YTD. Local Government positions in Anchorage have increased by 300. State Education jobs, a subset of State Government, are down 100 jobs YTD.

HEALTH CARE EMPLOYMENT

Employment in the Health Care sector continues to do well, with 400 (+2.0%) more jobs over 2016 YTD. Job growth in this sector has moderated following a better than average period of growth in 2016. As noted in AEDC's 2017 Economic Forecast report, this sector will be one of the bright points in an uncertain year for job growth.



AEDC
Anchorage Economic
Development Corporation

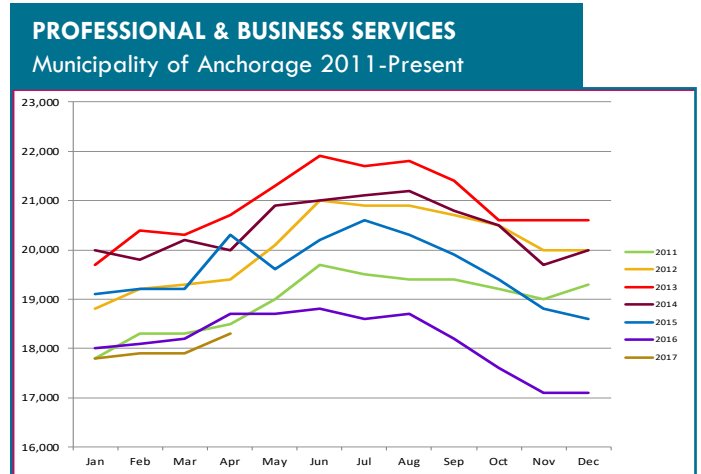
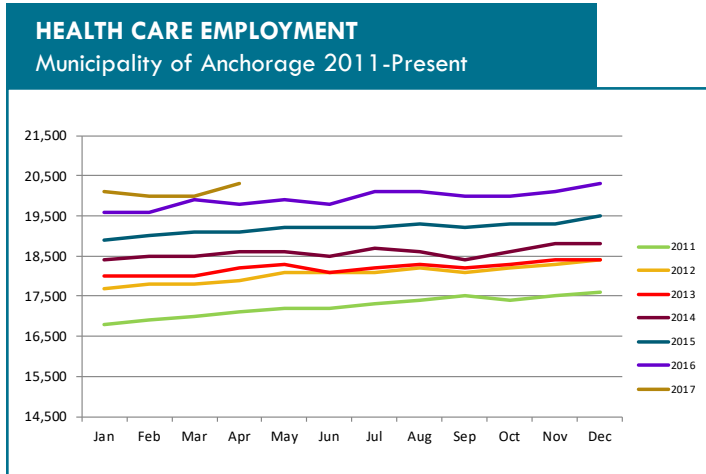


PROFESSIONAL & BUSINESS SERVICES

CONSULTING, ENGINEERING, ARCHITECTURE, LEGAL SERVICES, ACCOUNTING, SCIENTIFIC RESEARCH, WASTE MANAGEMENT & ADMINISTRATIVE SERVICES.

This category includes consulting, engineering, architecture, legal services, accounting, scientific research, waste management & administrative services.

Professional and business services has now dropped 300 (-1.6%) jobs YTD from 2016. Highly curtailed state capital budgets, continuing reduced capital investments by most oil field companies give clear insight to the cause of this industry's decreases. However, losses are moderating significantly compared to the loss of over 1,400 jobs in this sector in 2016.



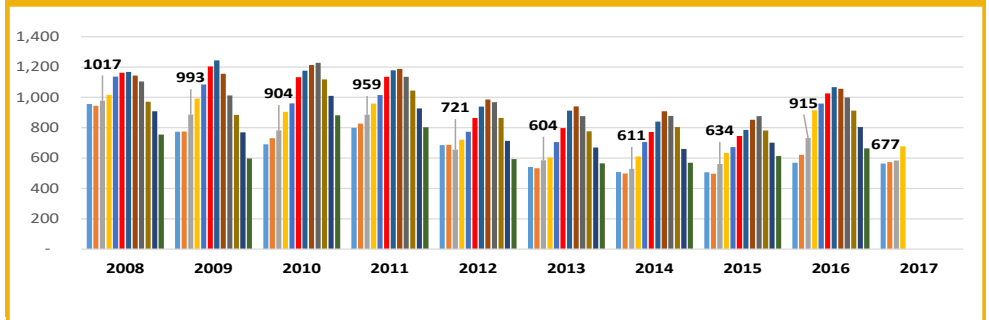
ANCHORAGE HOUSING

SINGLE FAMILY HOME LISTINGS

April data from Anchorage Multiple Listing Service shows that inventories of homes for sale, at 677 in Anchorage, were down 26 percent compared to April of last year, the seventh-highest inventory level for this month in the last 10 years. The Anchorage housing market remains a relatively balanced market of buying and selling opportunities for home sellers and home buyers.

ANCHORAGE SINGLE FAMILY HOME LISTINGS

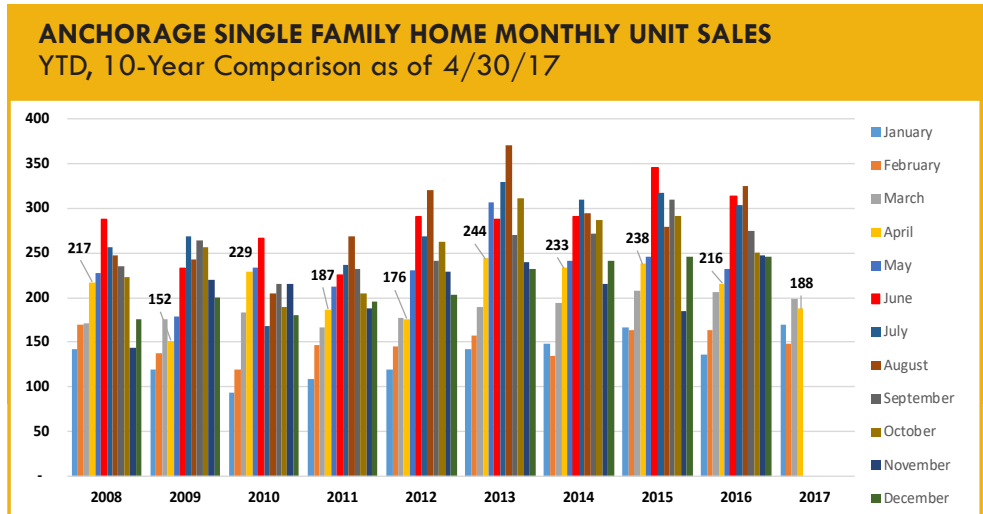
YTD Total, 10-Year Comparison



Source: Anchorage MLS

SINGLE FAMILY HOME MONTHLY UNIT SALES

Anchorage monthly sales of single family homes in April were the seventh-best for the month in the last 10 years. One hundred eighty eight units were sold, a 12.9 percent decrease compared to April 2016.



Source: Anchorage MLS

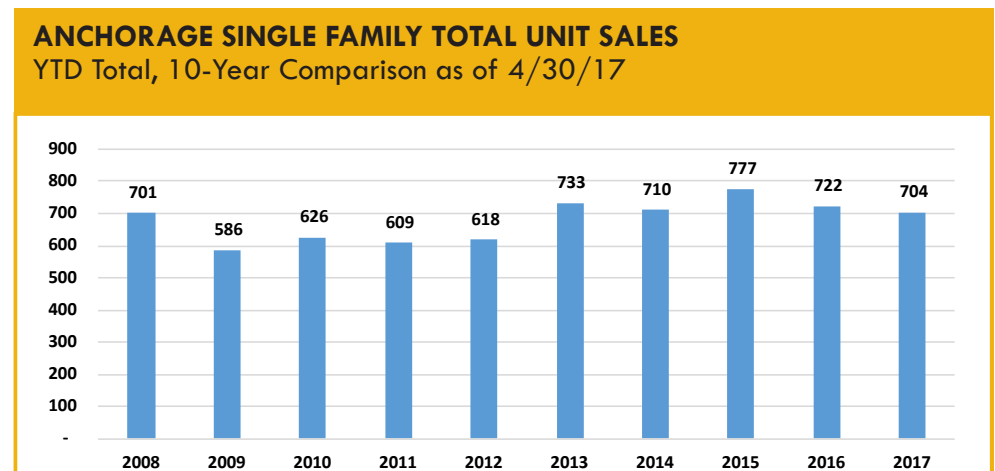


188

Single family home unit sales, April 2017

SINGLE FAMILY HOME YTD TOTAL UNIT SALES

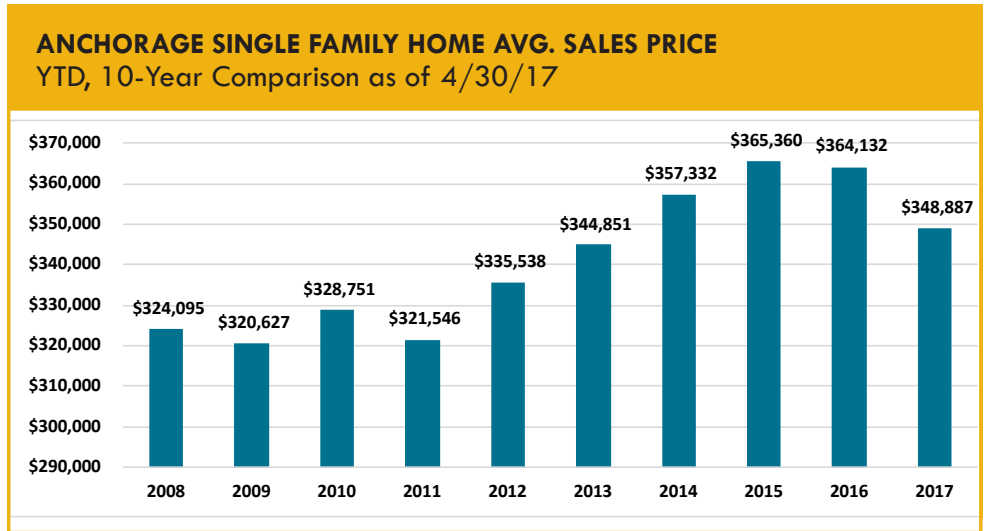
YTD sales for the first four months of 2017 are slightly behind the same period in 2016 with 704 units sold so far in 2017, down 2.5 percent compared to the same period last year. 2017 sales are tracking as the third best year for total sales in the last decade.



Source: Anchorage MLS

SINGLE FAMILY HOME AVERAGE SALES PRICE

The average price for a home sold in Anchorage YTD through the end of April stood at \$358,488, up \$1,687 compared to the same period in 2016. While average sales prices can vary widely from month to month, the annual average is another good measure of market health. At 0.5 percent higher than at this point last year, this price is at the top end of the 10-year average for this four month period.



Source: Anchorage MLS



\$358,488

Average home sale price in Anchorage, 2017 YTD

ALASKA FORECLOSURES

Alaska continues to show solid indicators in this category. Out of the 50 states and District of Columbia, Alaska is in a five-way tie for next to last place at 0.3 percent of all active mortgages in foreclosure for the 12 months ending February 28, 2017. The national average was 0.8 percent. Another positive indicator is Alaska's serious delinquency rate, at 1.1 percent of all mortgages statewide, well below the national average of 1.9 percent. Current foreclosure and serious delinquency data shows that the Alaska housing market remains solidly healthy as of this report.

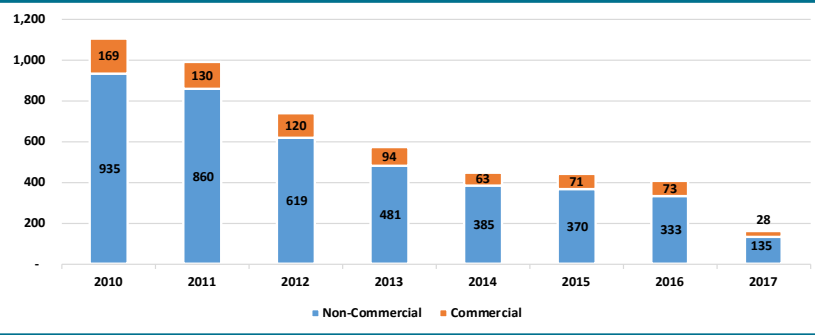
Source: CoreLogic

ALASKA BANKRUPTCIES

According to recently released data from the American Bankruptcy Institute, Alaska bankruptcies remain at near record lows. For the four months ending April 30, Alaska ranked 51st out of the 50 states and District of Columbia with a per capita rate of 0.70 bankruptcies per 1,000 Alaskans. This compares to the national per capita rate of 2.54 bankruptcies per 1,000 Americans. The total number of bankruptcies in Alaska YTD, at 163, are up by 30 percent compared to the same time frame in 2016. As measured by this metric, the overall financial health of Alaska's citizens and businesses continues to demonstrate solid results.

ANNUAL BANKRUPTCY FILINGS

As of 4/30/17

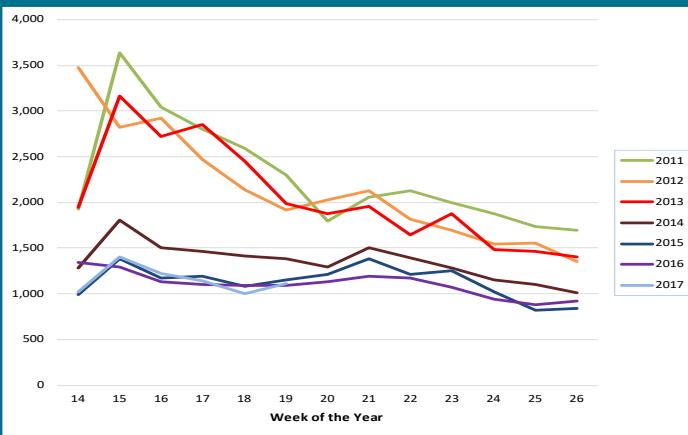


Source: American Bankruptcy Institute

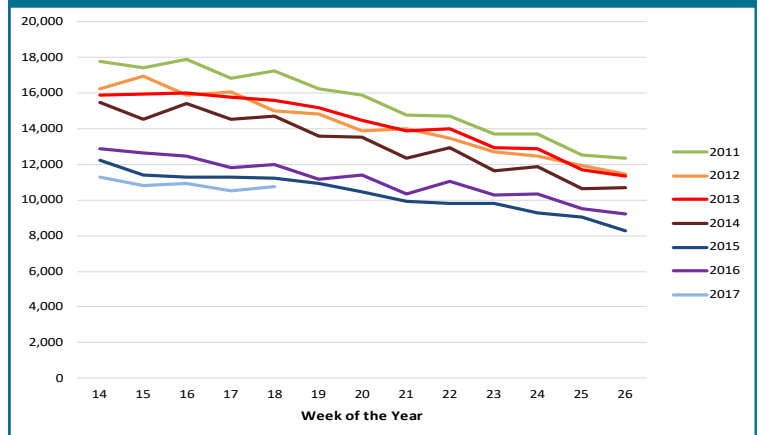
UNEMPLOYMENT CLAIMS

Initial unemployment claim applications can be interpreted as a proxy for layoffs. They tend to fall as job growth accelerates. As noted in our last report, weekly totals in 2017 continue to track near 2015 and 2016 levels, still well below recent historic highs seen in 2011. This continuing low range for initial unemployment claims are likely a result of mitigating factors such as workers retiring in the face of the recession, job losses impacting non-resident workers and laid off workers leaving Alaska for better job opportunities in the Lower 48 states. In all three cases, these are workers not applying for unemployment benefits in Anchorage or Alaska, thereby keeping the unemployment rate lower than might be expected.

INITIAL UNEMPLOYMENT CLAIMS IN ALASKA, Q2



CONTINUING UNEMPLOYMENT CLAIMS IN ALASKA, Q2



Continuing claims figures help to show how well unemployed workers are re-entering the workforce. This total does not include workers receiving extended benefits from the federal government. So far in 2017 weekly numbers in this category continue to track slightly below 2016 for the same time period, remaining well below recent historic highs reported in 2011. This is another indicator of some continuing strength to be found in the Alaska economy, though we continue to expect to see a slowing of this momentum reflected in these figures later in the coming year. Declining job availability will increasingly affect the ability to find jobs for those workers included in this metric. This will likely result in an increase in the numbers of workers receiving unemployment benefits in the long term, though how significant that increase will be is difficult to project.

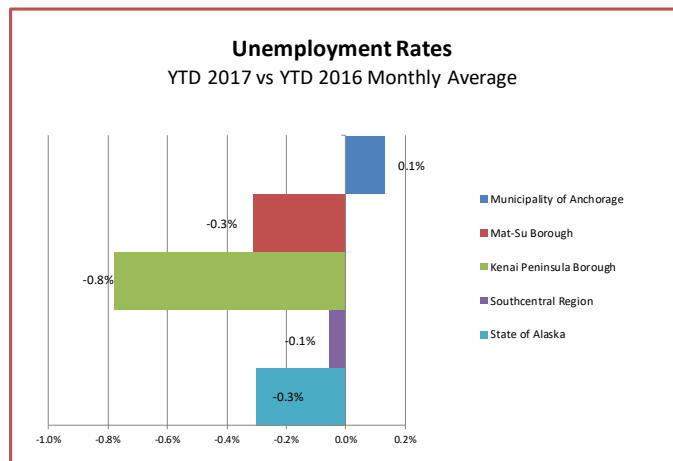
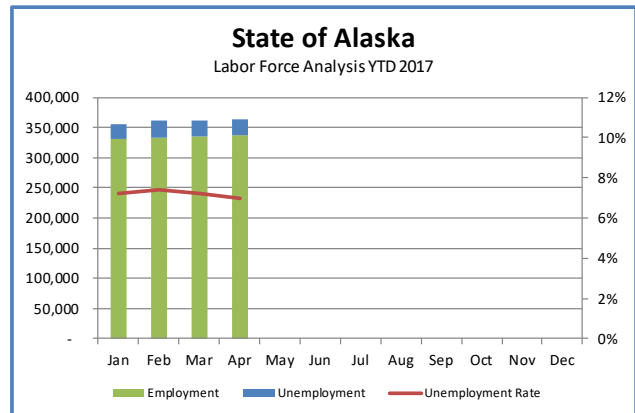
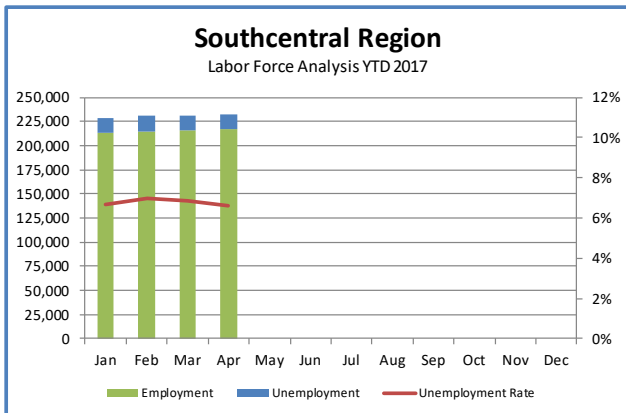
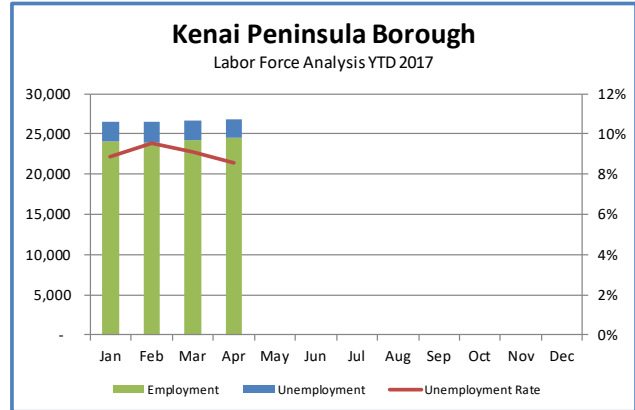
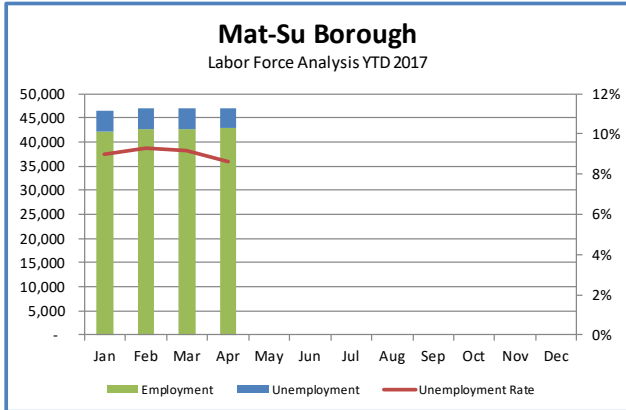
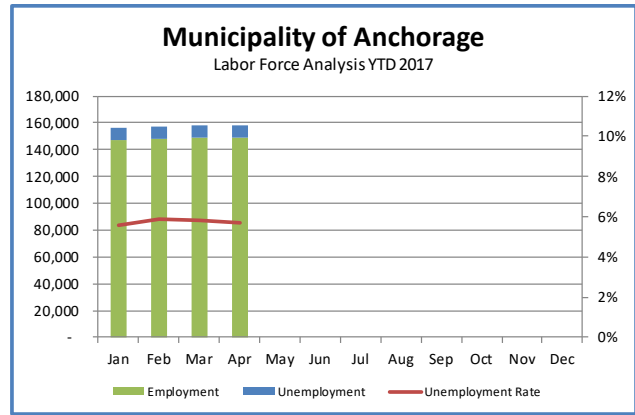
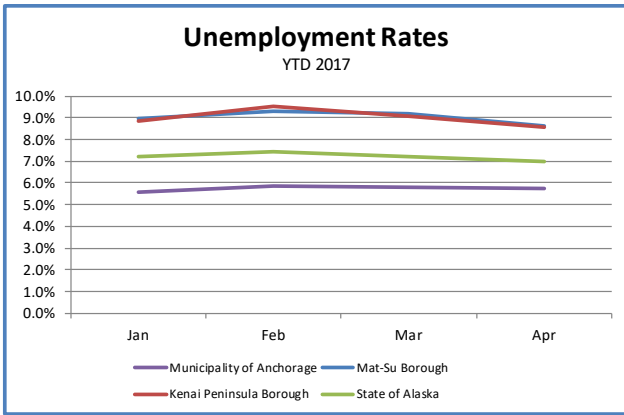
UNEMPLOYMENT ANALYSIS (YTD, 2017)

Anchorage, Mat-Su, Kenai Peninsula Borough

	Jan	Feb	Mar	Apr	May	Jun	Jul	Aug	Sep	Oct	Nov	Dec	17 YTD Avg	16 YTD Avg	17 vs 16 (YTD)
Municipality of Anchorage															
Labor Force	156,099	157,462	157,949	158,364									157,469	157,214	255
Employment	147,369	148,247	148,799	149,306	0	0	0	-	-	-	-	-	148,430	148,369	62
Unemployment	8,730	9,215	9,150	9,058									9,038	8,846	193
Unemployment Rate	5.6%	5.9%	5.8%	5.7%									5.7%	5.6%	0.1%
Mat-Su Borough															
Labor Force	46,387	46,883	46,937	46,833									46,760	45,022	1,738
Employment	42,223	42,530	42,625	42,792	0	0	0	-	-	-	-	-	42,543	40,822	1,721
Unemployment	4,164	4,353	4,312	4,041									4,218	4,201	17
Unemployment Rate	9.0%	9.3%	9.2%	8.6%									9.0%	9.3%	-0.3%
Kenai Peninsula Borough															
Labor Force	26,481	26,487	26,670	26,829									26,617	26,507	110
Employment	24,134	23,965	24,249	24,532	0	0	0	-	-	-	-	-	24,220	23,915	306
Unemployment	2,347	2,522	2,421	2,297									2,397	2,593	(196)
Unemployment Rate	8.9%	9.5%	9.1%	8.6%									9.0%	9.8%	-0.8%
Southcentral Region															
Labor Force	228,967	230,832	231,556	232,026									230,845	228,743	2,102
Employment	213,726	214,742	215,673	216,630									215,193	213,105	2,088
Unemployment	15,241	16,090	15,883	15,396									15,653	15,639	14
Unemployment Rate	6.7%	7.0%	6.9%	6.6%									6.8%	6.8%	-0.1%
State of Alaska															
Labor Force	356,084	360,469	362,177	363,052									360,446	357,042	3,404
Employment	330,459	333,699	336,036	337,649	0	0	0	-	-	-	-	-	334,461	330,227	4,234
Unemployment	25,625	26,770	26,141	25,403									25,985	26,815	(830)
Unemployment Rate	7.2%	7.4%	7.2%	7.0%									7.2%	7.5%	-0.3%

*Note: These numbers reflect employment, unemployment, etc. for only those people that are residence of the specified City/Region, thus are not inclusive of people who commute to another city for their jobs.

(Ex: Someone lives in Wasilla but works in Anchorage. They would be counted in the Mat-Su Borough's labor force and employment numbers. not the Municipality of Anchorage numbers)



INDUSTRY EMPLOYMENT ESTIMATES 2017

Municipality of Anchorage

Federal Data Series	CES				May	Jun	Jul	Aug	Sep	Oct	Nov	Dec	2017 YTD Avg.	2016 YTD Avg.	2017 vs 2016 YTD Change	% Change
	Jan	Feb	Mar	Apr												
% Change from same month year ago	-0.9%	-1.0%	-1.1%	-1.4%	-100.0%	-100.0%	-100.0%	-100.0%	-100.0%	-100.0%	-100.0%	-100.0%				
Total Nonfarm	150,000	150,300	150,200	151,800									150,600	152,300	-1,700	-1.1%
Goods Producing	10,200	10,300	10,400	11,000									10,500	11,800	-1,300	-11.0%
Mining and Logging ²	2,600	2,600	2,600	2,600									2,600	3,400	-800	-23.5%
Oil & Gas	2,500	2,500	2,500	2,500									2,500	3,300	-800	-24.2%
Construction	5,800	5,900	5,900	6,400									6,000	6,600	-600	-9.1%
Manufacturing	1,800	1,800	1,800	1,900									1,800	1,900	-100	-5.3%
Services Providing	139,800	140,000	139,800	140,800									140,100	140,400	-300	-0.2%
Trade/Transportation/Utilities	32,200	32,000	31,900	32,200									32,100	32,700	-600	-1.8%
Wholesale Trade	4,700	4,700	4,600	4,700									4,700	4,700	0	0.0%
Retail Trade	17,300	16,800	16,800	17,000									17,000	17,600	-600	-3.4%
Trans/Warehouse/Utilities	10,300	10,500	10,500	10,600									10,500	10,500	0	0.0%
Information	4,000	3,900	3,900	4,000									4,000	4,000	0	0.0%
Financial Activities	7,300	7,300	7,300	7,300									7,300	7,700	-400	-5.2%
Professional & Business Svcs	17,800	17,900	17,900	18,300									18,000	18,300	-300	-1.6%
Educational & Health Services	26,500	26,500	26,500	26,900									26,600	25,400	1,200	4.7%
Health Care	20,100	20,000	20,000	20,300									20,100	19,700	400	2.0%
Leisure & Hospitality	17,000	17,000	17,000	16,800									17,000	16,900	100	0.6%
Accommodation	3,100	3,100	3,100	3,200									3,100	3,300	-200	-6.1%
Food Svcs & Drinking Places	11,600	11,400	11,400	11,600									11,500	11,300	200	1.8%
Other Services	5,600	5,700	5,700	5,700									5,700	5,700	0	0.0%
Government	29,400	29,600	29,500	29,700									29,600	29,700	-100	-0.3%
Federal Government	8,500	8,500	8,500	8,400									8,500	8,500	0	0.0%
State Government	10,000	10,100	10,100	10,200									10,100	10,400	-300	-2.9%
State Education	2,500	2,700	2,700	2,700									2,700	2,800	-100	-3.6%
Local Government	10,900	10,900	10,900	11,100									11,000	10,700	300	2.8%
Local Education	8,000	8,000	8,000	8,100									8,000	7,800	200	2.6%

The Current Employment Statistics (CES) survey, is based on a survey of approximately 146,000 businesses and government agencies representing approximately 623,000 worksites throughout the United States. The primary statistics derived from the survey are monthly estimates of employment, hours, and earnings for the Nation, States, and major metropolitan areas. Estimates for the current year may be subject to large revisions that will be published early in the following year. CES data in the current year is presented as compared to CES data from the same months in the previous year.

The Quarterly Census of Employment and Wages (QCEW) program publishes a quarterly count of employment and wages reported by employers covering 98 percent of U.S. jobs, available at the county, MSA, state and national levels by industry. This data is considered to be the more definitive analysis of employment figures and trends. QCEW data in the current year is presented as compared to QCEW data from the same months in the previous year.

- Nonfarm Wage & Salary excludes self-employed workers, fishers, domestics, and unpaid family workers.

- All totals are seasonally non-adjusted totals.

- Government includes employees of public school systems and the University of Alaska.

- Source: Alaska Department of Labor and Workforce Development, Research and Analysis Section

* Note: The above numbers are representative of all people employed in the Municipality of Anchorage, this is inclusive of workers who claim residence outside of the Municipality of Anchorage. (Ex: someone who lives in the Mat-Su, but works in Anchorage would be included in these number)

Quick Comparisons

17 vs 16 March	-2,200	-1.4%
17 vs 16 1st Qtr	-1,500	-1.0%
17 vs 16 2nd Qtr	-2,200	-1.4%
17 vs 16 3rd Qtr.		
17 vs 16 4th Qtr.		

INDUSTRY EMPLOYMENT ESTIMATES 2017

State of Alaska

Federal Data Series	CES				May	Jun	Jul	Aug	Sep	Oct	Nov	Dec	2017 YTD Avg.	2016 YTD Avg.	2017 vs 2016 YTD Change	% Change
	Jan	Feb	Mar	Apr												
% Change from same month year ago	-2.4%	-1.8%	-2.2%	-2.6%	-100.0%	-100.0%	-100.0%	-100.0%	-100.0%	-100.0%	-100.0%	-100.0%				
Total Nonfarm	311,000	316,800	317,400	321,500									316,700	324,000	-7,300	-2.3%
Goods Producing	34,100	37,800	37,700	37,900									36,900	43,200	-6,300	-14.6%
Mining and Logging ²	12,900	13,000	13,300	13,300									13,100	16,100	-3,000	-18.6%
Mining	12,600	12,500	12,400	12,400									12,500	15,200	-2,700	-17.8%
Oil & Gas	9,700	9,700	10,900	10,900									10,300	12,500	-2,200	-17.6%
Construction	12,700	13,800	14,100	14,100									13,700	14,400	-700	-4.9%
Manufacturing	8,500	11,000	10,500	10,500									10,100	12,800	-2,700	-21.1%
Seafood Processing	5,200	6,900	6,300	6,300									6,200	9,000	-2,800	-31.1%
Services Providing	276,900	279,000	279,700	283,600									279,800	280,700	-900	-0.3%
Trade/Transportation/Utilities	61,300	60,800	61,000	62,500									61,400	62,200	-800	-1.3%
Wholesale Trade	5,900	5,900	6,000	5,900									5,900	6,400	-500	-7.8%
Retail Trade	35,700	35,100	34,900	35,500									35,300	35,800	-500	-1.4%
Food & Beverage Stores	5,600	5,800	5,700	5,800									5,700	5,600	100	1.8%
General Merchandise Stores	10,600	10,400	10,400	10,500									10,500	10,500	0	0.0%
Trans/Warehouse/Utilities	19,700	19,800	20,100	21,100									20,200	20,000	200	1.0%
Air Transportation	5,700	5,700	5,800	6,000									5,800	5,800	0	0.0%
Information	6,300	6,300	6,200	6,200									6,300	6,300	0	0.0%
Telecommunications	4,200	4,200	4,200	4,200									4,200	4,200	0	0.0%
Financial Activities	11,500	11,500	11,500	11,500									11,500	12,600	-1,100	-8.7%
Professional & Business Svcs	25,700	26,500	26,100	26,200									26,100	27,900	-1,800	-6.5%
Educational & Health Services	48,600	49,200	49,100	49,900									49,200	47,400	1,800	3.8%
Health Care	35,400	35,700	35,800	36,200									35,800	35,200	600	1.7%
Leisure & Hospitality	31,300	31,100	31,600	32,400									31,600	30,800	800	2.6%
Accommodation	6,800	6,800	7,000	7,400									7,000	6,500	500	7.7%
Food Svcs & Drinking Places	20,400	20,000	20,200	20,500									20,300	20,200	100	0.5%
Other Services	11,700	11,600	11,800	11,900									11,800	11,000	800	7.3%
Government	80,500	82,000	82,400	83,000									82,000	82,200	-200	-0.2%
Federal Government	14,500	14,600	14,900	14,900									14,700	14,800	-100	-0.7%
State Government	23,800	24,300	24,400	24,600									24,300	25,300	-1,000	-4.0%
State Education	7,200	7,700	7,600	7,700									7,600	8,000	-400	-5.0%
Local Government	42,200	43,100	43,100	43,500									43,000	42,200	800	1.9%
Local Education	23,800	24,700	24,700	24,900									24,500	24,100	400	1.7%
Tribal Government ³	3,800	3,900	4,000	3,900									3,900	3,600	300	8.3%

The Current Employment Statistics (CES) survey, is based on a survey of approximately 146,000 businesses and government agencies representing approximately 623,000 worksites throughout the United States. The primary statistics derived from the survey are monthly estimates of employment, hours, and earnings for the Nation, States, and major metropolitan areas. Estimates for the current year may be subject to large revisions that will be published early in the following year. CES data in the current year is presented as compared to CES data from the same months in the previous year.

The Quarterly Census of Employment and Wages (QCEW) program publishes a quarterly count of employment and wages reported by employers covering 98 percent of U.S. jobs, available at the county, MSA, state and national levels by industry. This data is considered to be the more definitive analysis of employment figures and trends. QCEW data in the current year is presented as compared to QCEW data from the same months in the previous year.

- Nonfarm Wage & Salary excludes self-employed workers, fishers, domestics, and unpaid family workers.

- All totals are non-seasonally adjusted totals.

- Government includes employees of public school systems and the University of Alaska.

- Totals may not equal sub-sections due to rounding.

- Source: Alaska Department of Labor and Workforce Development, Research and Analysis Section

Quick Comparisons

16 vs 17 March	-8,500	-2.6%
17 vs 16 1st Qtr	-6,900	-2.1%
17 vs 16 2nd Qtr	-8,500	-2.6%
3rd Qtr.		
17 vs 16		

Heidi Drygas
Commissioner

www.labor.alaska.gov



P.O. Box 111149
Juneau, AK 99811-1149
907.465.2700
commissioner.labor@alaska.gov

Press Release

COMMISSIONER'S OFFICE

FOR IMMEDIATE RELEASE
May 19, 2017

No. 17-25

For more information: **Conor Bell, Economist**
907-465-6037, Conor.Bell@Alaska.Gov

Unemployment Rate at 6.6 Percent in April

JUNEAU, Alaska—Alaska's seasonally adjusted unemployment rate was 6.6 percent in April, two-tenths of a percentage point higher than March. The comparable national rate in April was 4.4 percent. Alaska's rate has been the highest or second-highest among states for more than a year.

Preliminary estimates show April employment was down by 6,600 jobs, or 2.0 percent, compared to April 2016. The biggest losses were in oil and gas, which was down by 1,800 jobs, a 15 percent drop. Construction employment was down by 1,300 (an 8.4 percent decline), state government was down by 1,500 jobs (-5.8 percent), and professional and business services jobs were down by 1,600 (-5.6 percent).

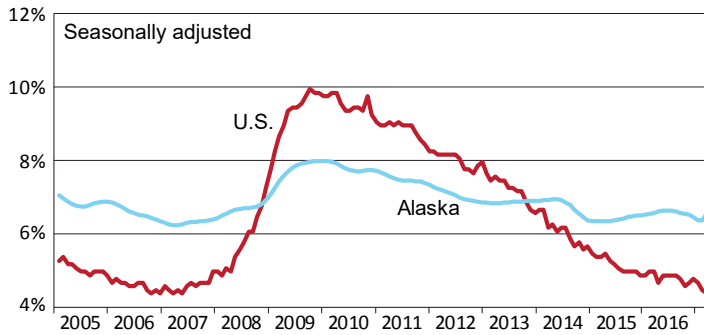
Most industries lost jobs over the year, with three exceptions. Health care was up by 900 jobs from its April 2016 level (2.5 percent), local government was up by 600 jobs (1.4 percent), and leisure and hospitality was up by 400 jobs (1.3 percent).

April's not-seasonally adjusted unemployment rate was 7.0 percent, down two-tenths of a percentage point from March. Across the state, unemployment rates fell in 21 of 29 boroughs and census areas as most areas added seasonal jobs. Kusilvak Census Area had the highest rate at 19.9 percent. Buoyed by spring fisheries, Aleutians East Borough had the lowest rate at 2.3 percent.

###

Unemployment Rates, Alaska and U.S.

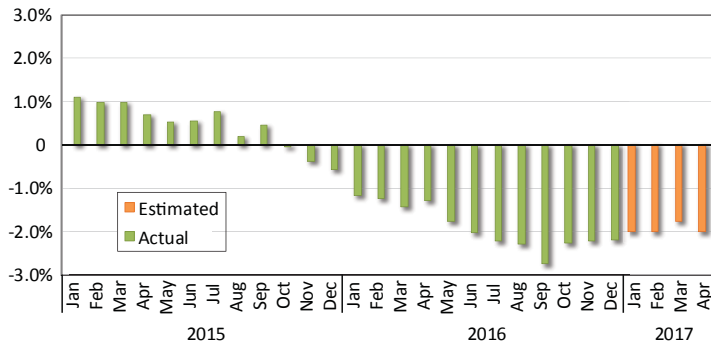
January 2005 to April 2017



Sources: Alaska Department of Labor and Workforce Development, Research and Analysis Section; and U.S. Bureau of Labor Statistics

Wage and Salary Employment

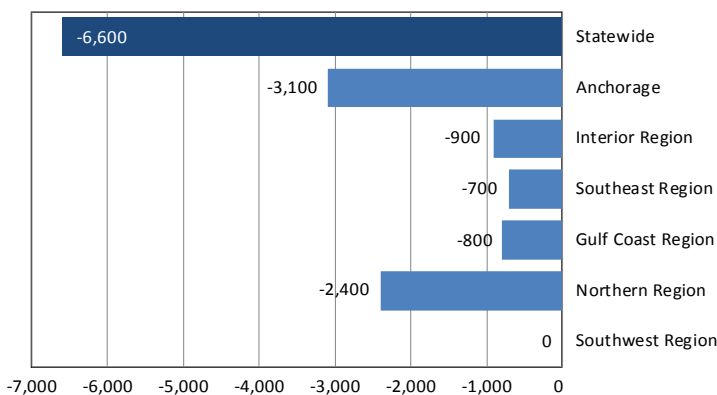
Percent change from same month the previous year



Note: Actual employment counts through December 2016 are from the benchmarked Current Employment Statistics and Quarterly Census of Employment and Wages employment series. Estimated employment counts from January through April 2017 are based on a forecast of the QCEW series.

Regional Employment

Change from April 2016 to April 2017



Source: Alaska Department of Labor and Workforce Development, Research and Analysis Section

Area Unemployment Rates

Not seasonally adjusted¹

	Rate		
	4/17 ^P	3/17	4/16
Alaska	7.0	7.2	6.8
Anchorage/Mat-Su Region	6.4	6.6	6.0
Anchorage, Municipality	5.7	5.8	5.3
Matanuska-Susitna Borough	8.6	9.2	8.3
Gulf Coast Region	8.0	8.4	8.2
Kenai Peninsula Borough	8.6	9.1	8.8
Kodiak Island Borough	4.9	4.4	4.7
Valdez-Cordova Census Area	8.8	10.2	9.5
Interior Region	7.0	7.3	6.8
Denali Borough	16.1	20.1	15.1
Fairbanks North Star Borough	6.1	6.2	5.8
Southeast Fairbanks Census Area	10.1	10.8	11.1
Yukon-Koyukuk Census Area	18.1	19.6	17.5
Northern Region	12.4	11.7	11.2
Nome Census Area	13.4	12.7	12.6
North Slope Borough	7.0	6.5	6.1
Northwest Arctic Borough	18.5	17.7	16.4
Southeast Region	6.1	7.0	6.3
Haines Borough	9.2	11.4	11.0
Hoonah-Angoon Census Area	14.2	16.8	14.9
Juneau, City and Borough	4.5	4.9	4.3
Ketchikan Gateway Borough	6.3	7.4	6.8
Petersburg Borough	9.2	10.3	8.7
Prince of Wales-Hyder CA	11.4	12.9	11.9
Sitka, City and Borough	4.1	4.6	4.6
Skagway, Municipality	11.6	19.8	12.2
Wrangell, City and Borough	6.8	8.3	6.7
Yakutat, City and Borough	7.0	9.1	5.7
Southwest Region	10.3	9.4	11.3
Aleutians East Borough	2.3	1.8	2.3
Aleutians West Census Area	3.6	2.2	3.6
Bethel Census Area	13.5	13.4	14.7
Bristol Bay Borough	8.0	12.9	9.5
Dillingham Census Area	9.7	9.7	10.8
Kusilvak Census Area	19.9	20.3	22.4
Lake and Peninsula Borough	14.3	14.4	16.1

P = Preliminary. As more information becomes available, data are revised every month for the previous month and again at the end of every calendar year.

Note: The official definition of unemployment excludes anyone who has not made an active attempt to find work in the four-week period up to and including the week that includes the 12th of the reference month.

¹Unemployment rates that are not seasonally adjusted should not be compared with those that are.

Source: Alaska Department of Labor and Workforce Development, Research and Analysis Section; and U.S. Bureau of Labor Statistics

Employment By Industry

	Average Monthly Employment			Compared to April 2016	
	April 2017 ¹	March 2017 ¹	April 2016 ²	Change	Percent
Total Nonfarm Employment	322,100	317,400	328,700	-6,600	-2.0%
Total Private	239,900	235,800	245,500	-5,600	-2.3%
Mining and Logging	13,200	13,400	15,100	-1,900	-12.6%
Oil and Gas	10,200	10,300	12,000	-1,800	-15.0%
Construction	14,100	13,200	15,400	-1,300	-8.4%
Manufacturing	12,400	13,500	12,500	-100	-0.8%
Trade, Transportation, and Utilities	62,500	60,800	64,000	-1,500	-2.3%
Wholesale	6,200	6,200	6,400	-200	-3.1%
Retail	35,500	34,800	36,400	-900	-2.5%
Transportation, Warehousing, and Utilities	20,800	19,800	21,200	-400	-1.9%
Information	6,300	6,100	6,400	-100	-1.6%
Financial Activities	11,700	11,600	11,800	-100	-0.8%
Professional and Business Services	27,000	26,200	28,600	-1,600	-5.6%
Education and Health	49,500	49,300	48,600	900	1.9%
Health Care	36,300	36,300	35,400	900	2.5%
Leisure and Hospitality	32,400	31,100	32,000	400	1.3%
Other Services	10,800	10,600	11,100	-300	-2.7%
Total Government	82,200	81,600	83,200	-1,000	-1.2%
Federal	14,900	14,900	15,000	-100	-0.7%
State	24,200	24,100	25,700	-1,500	-5.8%
Local	43,100	42,600	42,500	600	1.4%

¹Employment estimates for 2017 are based on a forecast of Quarterly Census of Employment and Wages (QCEW) data.

²Employment estimates for 2016 are from the benchmarked Current Employment Statistics employment data.

