



Anchorage Employment Report

CO-SPONSORED BY:



TABLE OF CONTENTS

EXECUTIVE SUMMARY 2

GOODS PRODUCING JOBS SUMMARY 3

SERVICES PROVIDING JOBS SUMMARY 4

 HEALTH CARE SNAPSHOT 4

 PROFESSIONAL & BUSINESS SERVICES SNAPSHOT 5

ANCHORAGE HOUSING 6

ALASKA FORECLOSURES & BANKRUPTCIES 7

UNEMPLOYMENT CLAIMS 8

UNEMPLOYMENT ANALYSIS OF SOUTHCENTRAL REGION (TABLE) 9

 LABOR FORCE ANALYSIS CHARTS 10

ANCHORAGE EMPLOYMENT ESTIMATES TABLE 11

STATE OF ALASKA PRESS RELEASE 12

All data referenced in this employment report is from the State of Alaska, Dept. of Labor & Workforce Development website: www.laborstats.alaska.gov and from the U.S. Bureau of Labor Statistics: www.bls.gov.

Report compiled by Anchorage Economic Development Corp. Research Department.
Report generously sponsored by First National Bank Alaska and Alaska Communications.

If you are interested in learning more about this data or are interested in how AEDC can help you develop a report, call AEDC at 907.258.3700.

EXECUTIVE SUMMARY

MONTHLY UNEMPLOYMENT

The not seasonally adjusted unemployment rate for Anchorage in July was 5.7 percent, down 0.2 percent compared to the June revised rate. **This is 1.1 percent above the national not seasonally adjusted rate of 4.6 percent and 0.9 percent below the statewide not seasonally adjusted rate of 6.6 percent.** The July unemployment rate for Anchorage was 0.6 percent higher than it was in July 2016. As always, it should be noted that these are preliminary survey figures for July and will be revised next month.

5.7%

July 2017
Unemployment Rate
for Anchorage (preliminary)

YEAR-TO-DATE UNEMPLOYMENT

The Anchorage 2017 average year-to-date (YTD) not seasonally adjusted unemployment rate remains at 5.8 percent at the end of July, 0.6 percent higher than at this time last year. A decrease of 366 in the employment total and an increase of 1,159 in the Anchorage labor force during the YTD period has resulted in the reported unemployment total increasing by 268. The total number of unemployed people in Anchorage for the month of July is estimated at 9,037 (those actively looking for jobs), 1,009 more than July 2016.

5.8%

2017 YTD
Unemployment Rate
for Anchorage (preliminary)

In the Mat-Su borough, the YTD average monthly unemployment rate of 8.8 percent is down 0.5 percent from 2016 YTD while the Kenai Peninsula's unemployment rate of 8.5 has decreased by 1.3 percent during the same period (see the charts on pages 9-10 for more details).

It is important to note that the Anchorage unemployment numbers represent the labor force residing in Anchorage, and do not describe the number of filled positions in Anchorage. The industry employment estimates referenced in the remainder of this report are representative of the number of jobs in the Municipality of Anchorage, regardless of the job holder's place of residency.

ANCHORAGE INDUSTRY EMPLOYMENT ESTIMATES

As for Anchorage industry employment estimates, which includes total jobs in Anchorage held by city residents and commuters, the YTD average through July for 2017 shows a loss of 3,000 jobs (-1.9%) so far compared to the same period in 2016. The private sector (total jobs minus government jobs) at 122,700 jobs shrunk by 2,700 (-1.3%) jobs during this time, while Government employment at 28,700 jobs has decreased by 300 (-1.0%). Federal jobs decreased by 100 (-1.2%). State Government jobs have decreased by 300 (-2.9%) and Local Government jobs have increased by 300 (+3.0%). Please note these figures will likely be revised as more data is received and additional analysis is conducted.

153,100

Total jobs in Anchorage
July 2017 (preliminary)

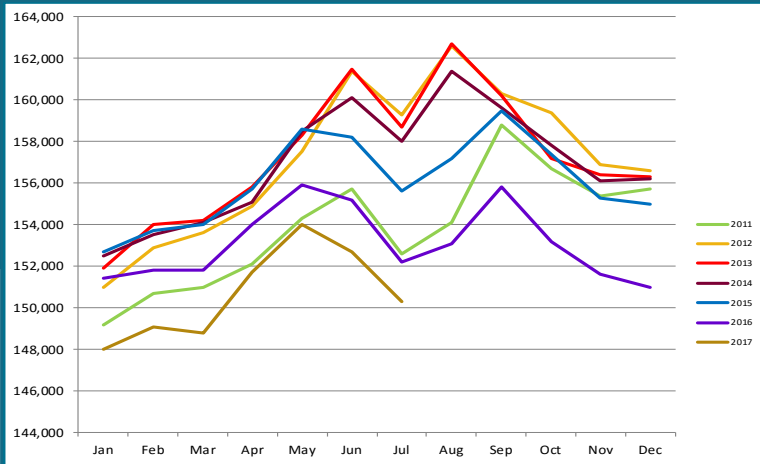
The Goods Producing category lost 1,200 jobs YTD (-9.4%). The Mining & Logging industry (which includes Oil & Gas employment) continues to decline locally and is showing 600 fewer jobs (-18.8%). Construction is down 500 jobs

YTD (-6.8%), while Manufacturing at 1,900 YTD decreased by 100 (-5.0%) compared to 2016.

Services Providing industries have lost 1,800 jobs YTD (-1.3%). The category showing increases is Health Care, which is up 600 jobs (+3.0%). Services Providing industries showing losses so far in 2017 include Retail down 600 jobs (-3.4%), Information down 400 jobs (-9.8%), Professional & Business Services down 900 jobs (-4.8%) and Leisure & Hospitality (Tourism) down 200 (-1.2%). Financial Activities are currently flat YTD.

ANCHORAGE EMPLOYMENT

Municipality of Anchorage 2011-Present



GOODS PRODUCING JOBS

CONSTRUCTION WORK, MINING, OIL & GAS PRODUCTION, MANUFACTURING

Losses in the number of Goods Producing jobs in Anchorage are no longer leading the overall downward trend 2017 YTD. There is a marked narrowing of losses in several industry sectors within this broad category of jobs such as the Goods Producing category. The outlook for the remainder of 2017 is for job losses in this category to continue to narrow even more.

The year to date average of 11,500 is 1,200 (-9.4%) fewer jobs than the same period in 2016.

There was a decrease of 600 (-18.8%) jobs in the

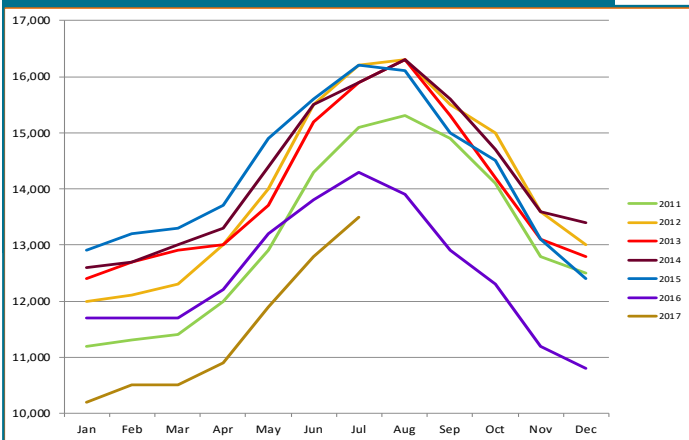
Mining & Logging industry, which includes Oil & Gas employment. YTD Construction employment is down 500 (-6.8%) jobs. Manufacturing is flat at 1,900 jobs. Total Anchorage Goods Producing employment is now at 2000 employment levels.

The Oil & Gas sector YTD job total shows 600 (-19.4%) fewer jobs so far this year compared to 2016 YTD though year-over-year losses seem to be slowing. Statewide, oil & gas industry YTD employment is down 2,000 jobs (-16.1%) compared to the same period in 2016. The ongoing market uncertainty of \$45-\$50 per barrel domestic and international oil prices are limiting factors for industry job growth. Lack of certainty from the State of Alaska for tax and fiscal policy is an even greater limiter of industry investment and the jobs that would accompany new investment.

The Construction industry, as noted earlier, is showing 500 YTD job losses compared to the same period in 2016. Anchorage building permit application values, a measure of interest in construction, have reached \$257.5 million through the June 9, 2017 reporting period, 5.2% higher than the \$244.7 million at this point last year. Projects submitted for permits are a relatively healthy mix of private sector and government projects.

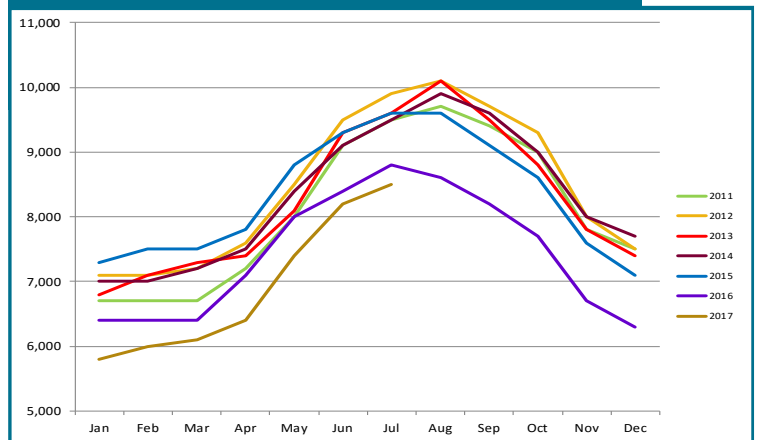
GOODS PRODUCING JOBS

Municipality of Anchorage 2011-Present



CONSTRUCTION EMPLOYMENT

Municipality of Anchorage 2011-Present



In Anchorage:

13,500

GOODS PRODUCING JOBS

July 2017 (preliminary)



8,500

CONSTRUCTION JOBS

July 2017 (preliminary)



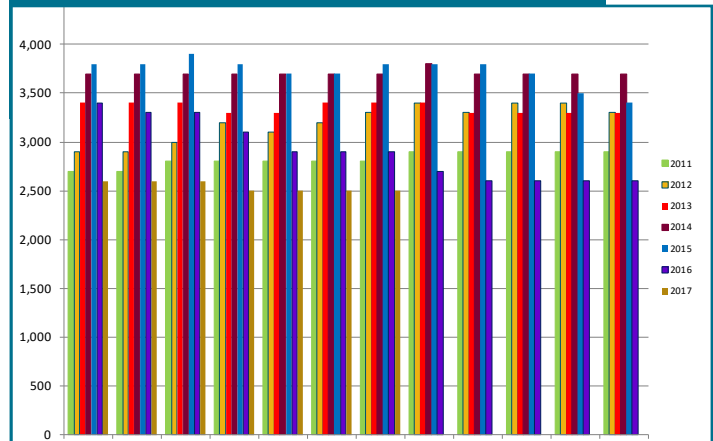
2,500

OIL & GAS JOBS

July 2017 (preliminary)

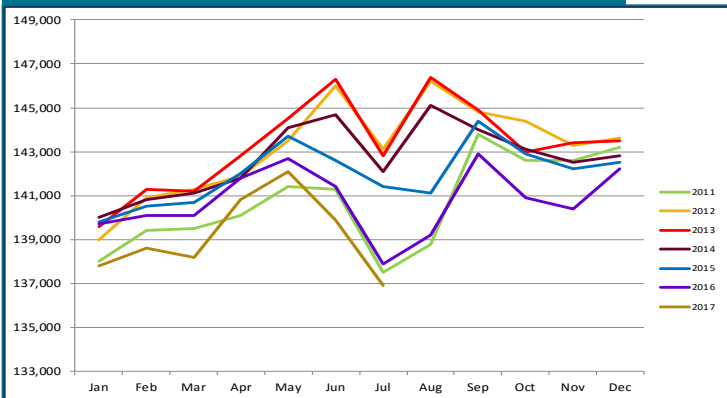
OIL & GAS EMPLOYMENT

Municipality of Anchorage 2011-Present



SERVICES PROVIDING JOBS

Municipality of Anchorage 2011-Present



SERVICES PROVIDING JOBS

ENGINEERING, RETAIL, TOURISM, HEALTH CARE, ETC.

Losses in the number of Services Providing jobs in Anchorage are now leading the overall downward trend 2017 YTD. There is a marked increase of losses in several industry sectors within this broad category of jobs. In July 2016 job losses in the Services Providing category reached 500. For July 2017 job losses have significantly grown to a decline of 2,200 jobs and the outlook for the remainder of 2017 is for job losses in this category to remain at higher levels than seen in 2016.

Overall, the Anchorage YTD average job losses for Services Providing jobs is down 1,800 (-1.3%) from the same period in 2016. There has been a delayed ripple effect caused by the losses previously seen in the Goods Producing category in high wage sectors like Oil & Gas and Construction. Lower levels of consumer spending that resulted from those earlier job losses are now being felt in sectors such as Retail, Accommodation and the Food Services sectors.

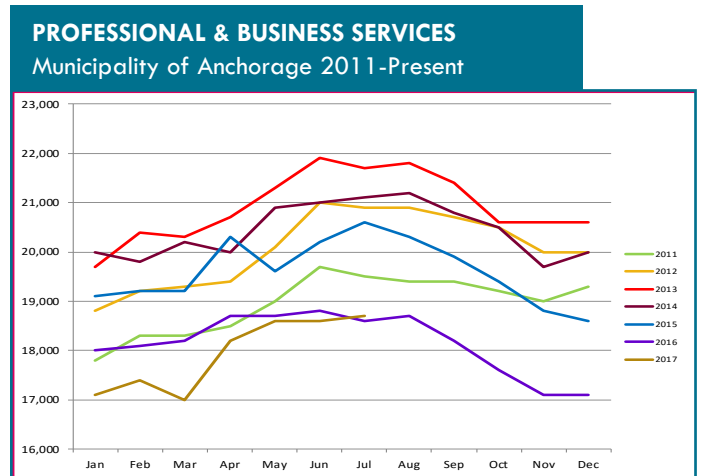
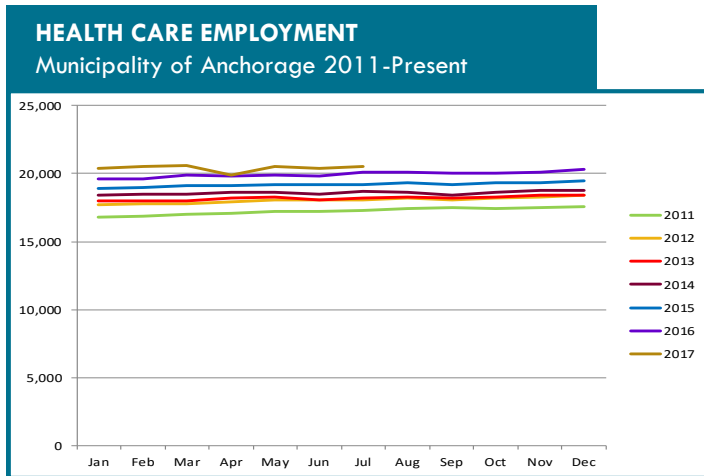
HEALTH CARE EMPLOYMENT

Employment in the Health Care sector continues to do well, with 600 (+3.0%) more jobs over 2016 YTD. Job growth in this sector has continued a better than average period of growth that began in 2016. As noted in AEDC's 2017 Economic Forecast report, this sector will be one of the bright points in an uncertain year for job growth.

TRANSPORTATION

The YTD employment average in this industry is down 700 (-2.1%) jobs this year. The Retail Trade sector, a subset of the TTU industry, is down 600 (-3.4%) jobs YTD compared to 2016 YTD, while wholesale trade is down 100 jobs.

Monthly estimates in the Transportation/Warehouse/Utilities sector (a sub-group of the Trade/Transportation/Utilities industry) continues to show stability with no change YTD. Solid national economic indicators were reflected in the 2nd quarter cargo figures for Ted Stevens Anchorage International Airport. Cargo tonnage totals were up seven percent for the quarter compared to the same quarter in 2016 and were the highest volumes seen since 2006. The continuing strength in the air cargo industry at the airport, combined with a strong visitor season in 2017, underscores that this sector will continue to be a steady component of the Anchorage economy.



PROFESSIONAL & BUSINESS SERVICES

CONSULTING, ENGINEERING, ARCHITECTURE, LEGAL SERVICES, ACCOUNTING, SCIENTIFIC RESEARCH, WASTE MANAGEMENT & ADMINISTRATIVE SERVICES.

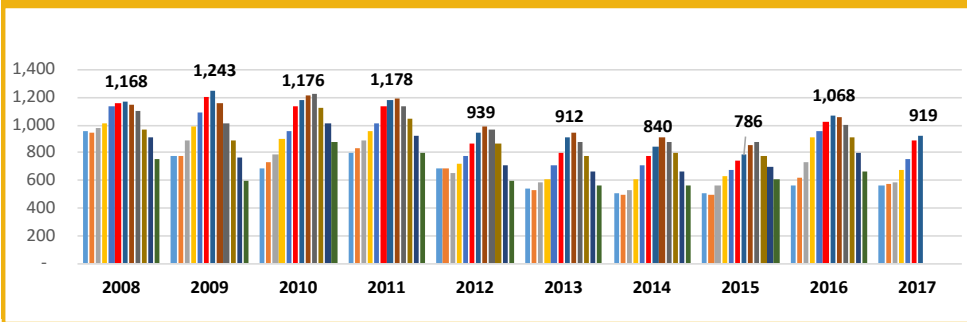
Professional and Business Services has now dropped 900 (-4.8%) jobs YTD from 2016. However, much like the sectors in the Goods Producing category, this sector is seeing a declining trend of job losses in recent months. For July, this sector saw losses of 700 jobs compared to over 1,200 jobs that were lost in July of 2016. It is likely the rate of job losses in this sector will continue to moderate in the coming months.

GOVERNMENT

The Government jobs monthly average in Anchorage is down 300 jobs YTD from 2016 due to losses in the State Government sector averaging 300 (-2.9%) fewer jobs than at this point last year. Local Government positions have increased by 300. Federal Government jobs are down 100 (-1.2%)

ANCHORAGE HOUSING

ANCHORAGE SINGLE FAMILY HOME LISTINGS YTD Total, 10-Year Comparison



Source: Anchorage MLS

SINGLE FAMILY HOME LISTINGS

July data from Anchorage Multiple Listing Service show inventory of homes for sale, at 919 in Anchorage. This is down 14 percent compared to July of last year, the seventh highest inventory level for this month in the last 10 years. The Anchorage housing market remains a relatively balanced market of buying and selling opportunities for home sellers and home buyers.



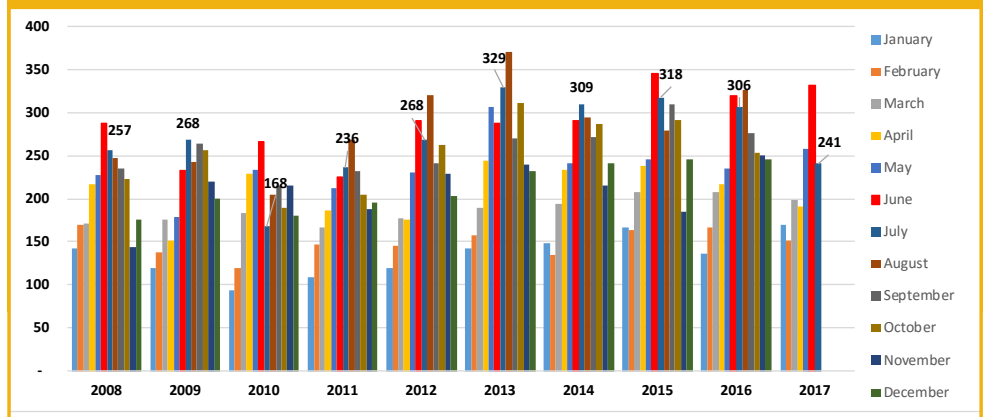
241

Single family home unit sales, July 2017

SINGLE FAMILY HOME MONTHLY UNIT SALES

Anchorage monthly sales of single family homes in July were the eighth-best for the month in the last 10 years. Two hundred forty-one units were sold, a 22 percent increase compared to July 2016.

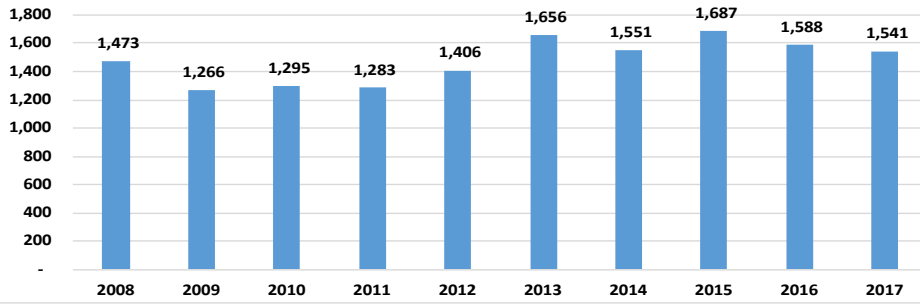
ANCHORAGE SINGLE FAMILY HOME MONTHLY UNIT SALES YTD, 10-Year Comparison as of 7/31/17



Source: Anchorage MLS

ANCHORAGE SINGLE FAMILY TOTAL UNIT SALES

YTD Total, 10-Year Comparison as of 7/31/17



Source: Anchorage MLS

SINGLE FAMILY HOME YTD TOTAL UNIT SALES

YTD sales for the first seven months of 2017 are slightly ahead the same period in 2016 with 1,541 units sold so far in 2017, down three percent compared to the same period last year. 2017 sales are tracking as the fifth best year for total sales in the last decade.

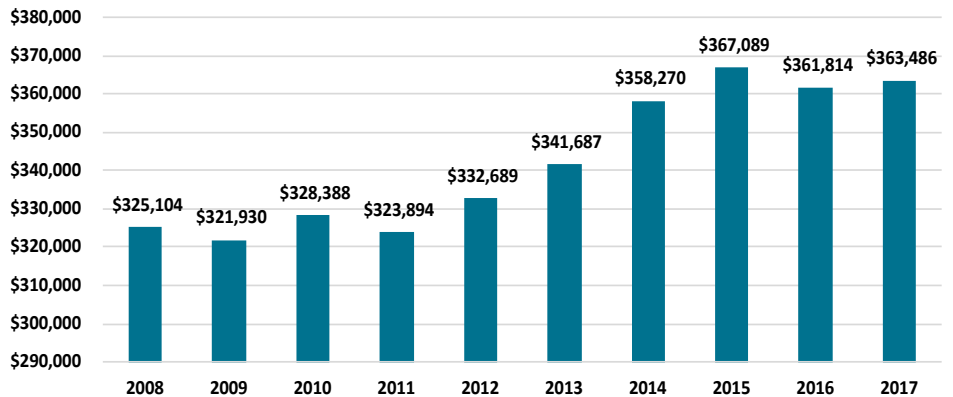


SINGLE FAMILY HOME AVERAGE SALES PRICE

The average price for a home sold in Anchorage YTD through the end of July stood at \$363,486, up \$1,672 compared to the same period in 2016. While average sales prices can vary widely from month to month, the annual average is another good measure of market health. At 0.5% percent higher than at this point last year, this price is second highest for the 10 year average for this five-month period.

ANCHORAGE SINGLE FAMILY HOME AVG. SALES PRICE

YTD, 10-Year Comparison as of 7/31/17



Source: Anchorage MLS

ALASKA FORECLOSURES

Alaska continues to show solid indicators in this category. Out of the 50 states and District of Columbia, Alaska is in a five-way tie for next to last place at 0.3 percent of all active mortgages in foreclosure for the 12 months ending May, 2017. The national average was 0.7 percent. Another positive indicator is Alaska's serious delinquency rate, at 1.2 percent of all mortgages statewide, well below the national average of 1.7 percent. Current foreclosure and serious delinquency data shows that the Alaska housing market remains solidly healthy as of this report.

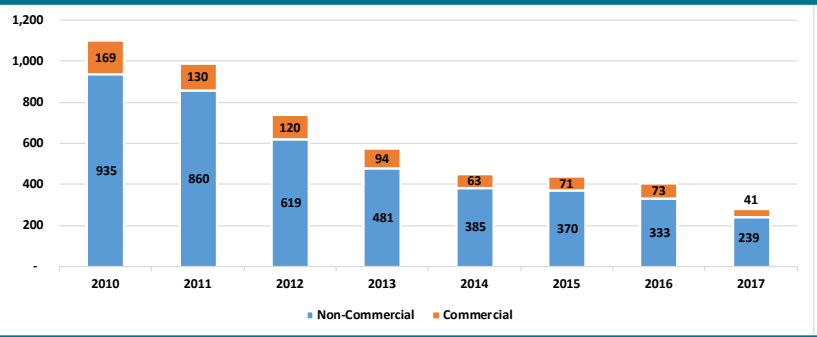
Source: CoreLogic

ALASKA BANKRUPTCIES

According to recently released data from the American Bankruptcy Institute, Alaska bankruptcies remain at near record lows. For the five months ending May 31, Alaska ranked 51st out of the 50 states and District of Columbia with a per capita rate of 0.69 bankruptcies per 1,000 Alaskans. This compares to the national per capita rate of 2.54 bankruptcies per 1,000 Americans. The total number of bankruptcies in Alaska YTD, at 280, are up by 21 percent compared to the same timeframe in 2016. As measured by this metric, the overall financial health of Alaska's citizens and businesses continues to demonstrate results that are much better than might be expected.

ANNUAL BANKRUPTCY FILINGS

As of 7/31/17

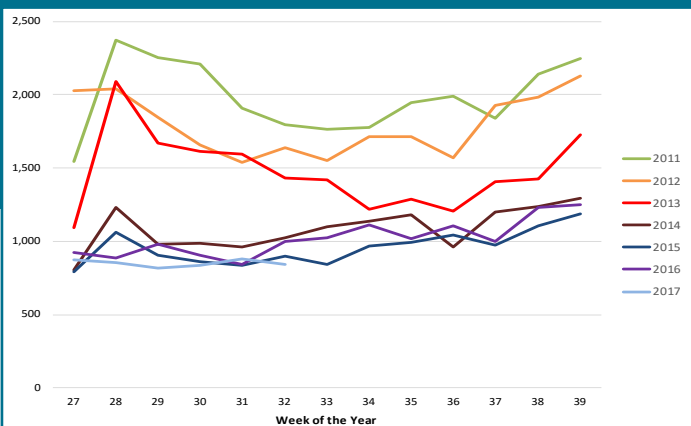


Source: American Bankruptcy Institute

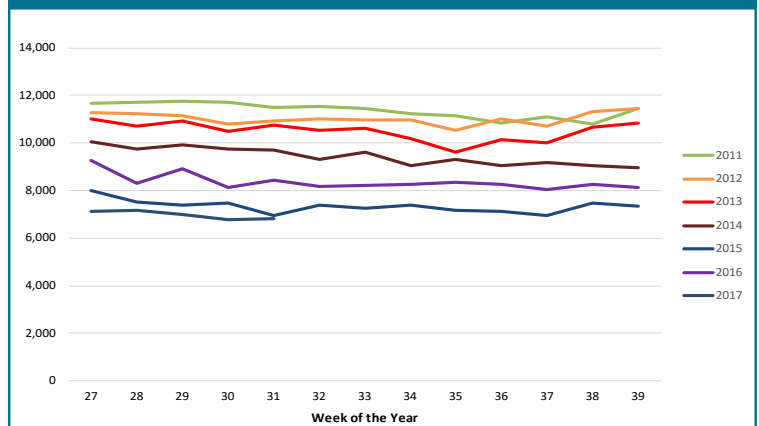
UNEMPLOYMENT CLAIMS

Initial unemployment claim applications can be interpreted as a proxy for layoffs. They tend to fall as job growth accelerates. The trend in weekly totals in 2017 continue to track at record lows below 2015 and 2016 levels, well under recent historic highs seen in 2011. This continuing low range for initial unemployment claims are likely a result of mitigating factors such as older workers retiring in the face of the recession, job losses impacting non-resident workers and laid off workers leaving Alaska for better job opportunities in the Lower 48 states. In all cases, these are workers not applying for unemployment benefits in Anchorage or Alaska, thereby keeping the unemployment rate lower than might be expected.

INITIAL UNEMPLOYMENT CLAIMS IN ALASKA, Q3



CONTINUING UNEMPLOYMENT CLAIMS IN ALASKA, Q3



Continuing claims figures help to show how well unemployed workers are re-entering the workforce. This total does not include workers receiving extended benefits from the federal government. 2017 weekly numbers in this category continue to track at record lows slightly below 2015 for the same time period, well below recent historic highs reported in 2011. This is another indicator of some continuing strength to be found in the Alaska economy. Declining job availability in the future may negatively affect the ability to find jobs for those workers included in this metric. If this trend should develop it will result in an increase in the numbers of workers receiving unemployment benefits in the long term, though how significant that increase will be is difficult to project.

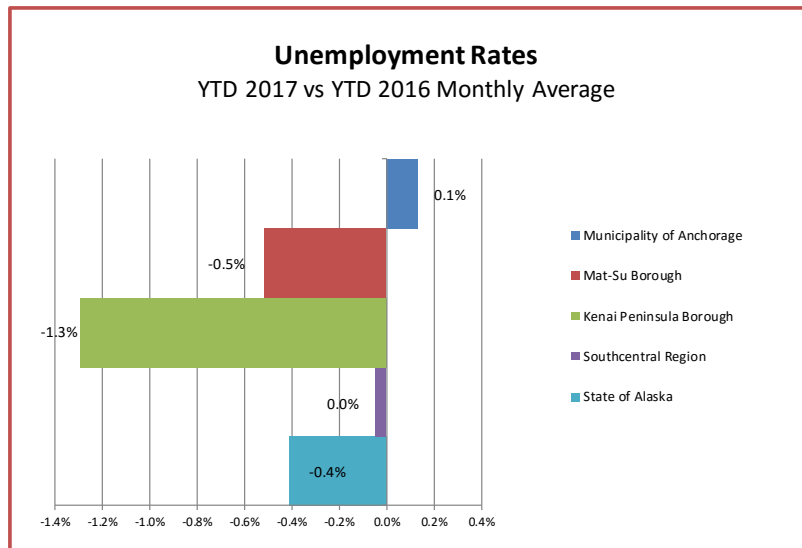
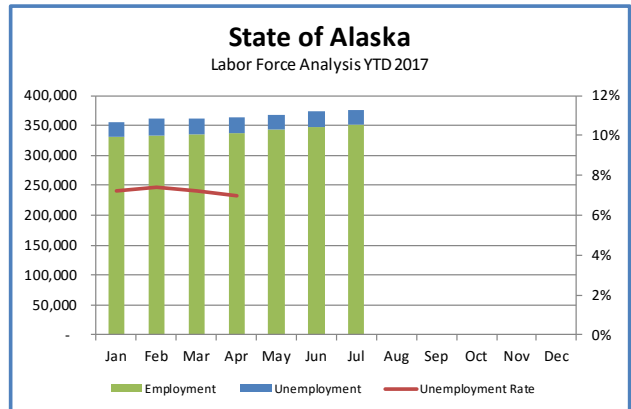
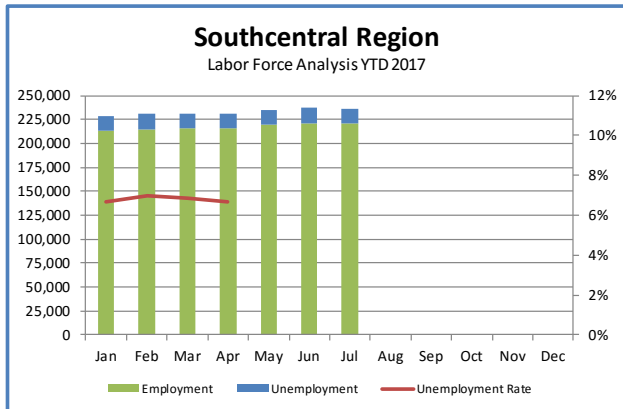
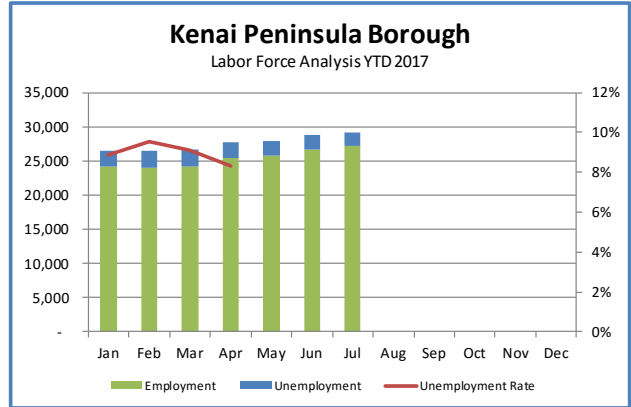
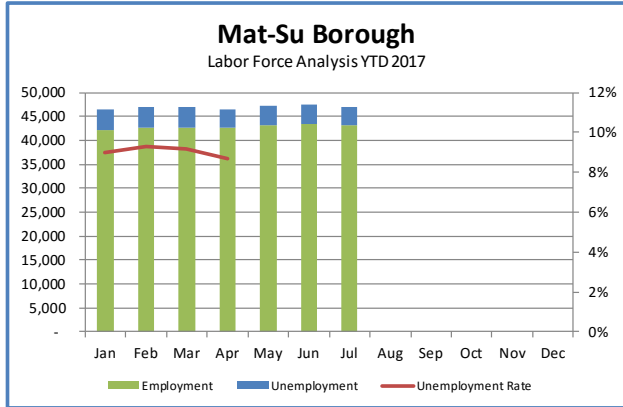
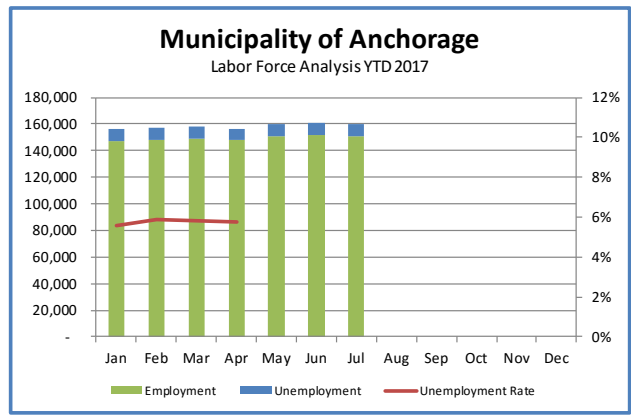
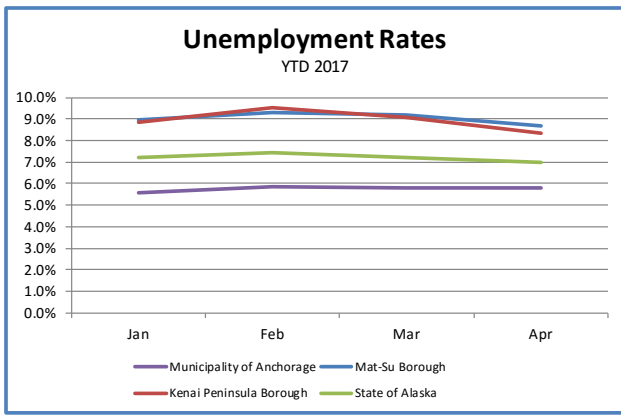
UNEMPLOYMENT ANALYSIS (YTD, 2017)

Anchorage, Mat-Su, Kenai Peninsula Borough

	Jan	Feb	Mar	Apr	May	Jun	Jul	Aug	Sep	Oct	Nov	Dec	17 YTD Avg	16 YTD Avg	17 vs 16 (YTD)	
Municipality of Anchorage							Preliminary									
Labor Force	156,099	157,462	157,949	156,645	160,015	160,771	159,668						158,373	157,214	1,159	
Employment	147,369	148,247	148,799	147,597	150,903	151,270	150,631	-	-	-	-	-	148,003	148,369	(366)	
Unemployment	8,730	9,215	9,150	9,048	9,112	9,501	9,037						9,113	8,846	268	
Unemployment Rate	5.6%	5.9%	5.8%	5.8%	5.7%	5.9%	5.7%						5.8%	5.6%	0.1%	
Mat-Su Borough																
Labor Force	46,387	46,883	46,937	46,554	47,114	47,394	46,951						46,878	45,022	1,856	
Employment	42,223	42,530	42,625	42,518	43,254	43,328	43,130						42,474	40,822	1,653	
Unemployment	4,164	4,353	4,312	4,036	3,860	4,066	3,821						4,132	4,201	(69)	
Unemployment Rate	9.0%	9.3%	9.2%	8.7%	8.2%	8.6%	8.1%						8.8%	9.3%	-0.5%	
Kenai Peninsula Borough																
Labor Force	26,481	26,487	26,670	27,629	27,924	28,856	29,222						27,341	26,507	834	
Employment	24,134	23,965	24,249	25,334	25,767	26,685	27,166						24,421	23,915	506	
Unemployment	2,347	2,522	2,421	2,297	2,157	2,171	2,056						2,319	2,593	(273)	
Unemployment Rate	8.9%	9.5%	9.1%	8.3%	7.7%	7.5%	7.0%						8.5%	9.8%	-1.3%	
Southcentral Region																
Labor Force	228,967	230,832	231,556	230,828	235,053	237,021	235,841						230,546	228,743	1,803	
Employment	213,726	214,742	215,673	215,447	219,924	221,283	220,927						214,897	213,105	1,793	
Unemployment	15,241	16,090	15,883	15,381	15,129	15,738	14,914						15,649	15,639	10	
Unemployment Rate	6.7%	7.0%	6.9%	6.7%	6.4%	6.6%	6.3%						6.8%	6.8%	0.0%	
State of Alaska																
Labor Force	356,084	360,469	362,177	363,136	367,677	374,057	376,646						363,933	357,042	6,892	
Employment	330,459	333,699	336,036	337,759	342,683	347,957	351,908						334,488	330,227	4,261	
Unemployment	25,625	26,770	26,141	25,377	24,994	26,100	24,738						25,835	26,815	(980)	
Unemployment Rate	7.2%	7.4%	7.2%	7.0%	6.8%	7.0%	6.6%						7.1%	7.5%	-0.4%	

*Note: These numbers reflect employment, unemployment, etc. for only those people that are residence of the specified City/Region, thus are not inclusive of people who commute to another city for their jobs.

(Ex: Someone lives in Wasilla but works in Anchorage. They would be counted in the Mat-Su Borough's labor force and employment numbers. not the Municipality of Anchorage numbers)



INDUSTRY EMPLOYMENT ESTIMATES 2017

Municipality of Anchorage

Federal Data Series	QCEW		QCEW		QCEW		CES		CES		CES		CES		CES		CES		2017 vs 2016 YTD Change	% Change
	Jan Actual	Feb Actual	Mar Actual	Apr Revised	May Revised	Jun Revised	Jul Preliminary	Aug	Sep	Oct	Nov	Dec	2017 YTD Avg.	2016 YTD Avg.						
% Change from same month year ago	-2.2%	-1.8%	-2.0%	-2.1%	-1.8%	-1.7%	-2.0%	-100.0%	-100.0%	-100.0%	-100.0%	-100.0%	151,400	154,400	-3,000	-1.9%				
Total Nonfarm	148,000	149,100	148,800	151,700	154,000	154,900	153,100						11,500	12,700	-1,200	-9.4%				
Goods Producing	10,200	10,500	10,500	10,900	11,900	12,800	13,500						2,600	3,200	-600	-18.8%				
Mining and Logging ²	2,700	2,700	2,700	2,600	2,600	2,500	2,600						6,900	7,400	-500	-6.8%				
Oil & Gas	2,600	2,600	2,600	2,500	2,500	2,500	2,500						2,500	3,100	-600	-19.4%				
Construction	5,800	6,000	6,100	6,400	7,400	8,200	8,500						1,900	2,000	-100	-5.0%				
Manufacturing	1,700	1,700	1,700	1,900	1,900	2,100	2,400						139,900	141,700	-1,800	-1.3%				
Services Providing	137,800	138,600	138,200	140,800	142,100	142,000	139,700						32,700	33,400	-700	-2.1%				
Trade/Transportation/Utilities	32,200	32,100	32,000	32,200	33,200	33,500	33,900						4,700	4,800	-100	-2.1%				
Wholesale Trade	4,500	4,600	4,600	4,700	4,800	4,800	4,800						17,200	17,800	-600	-3.4%				
Retail Trade	17,400	17,100	17,000	17,000	17,200	17,400	17,600						10,900	10,900	0	0.0%				
Trans/Warehouse/Utilities	10,500	10,400	10,400	10,600	11,200	11,400	11,500						3,700	4,100	-400	-9.8%				
Information	3,900	2,800	3,800	3,900	3,900	3,900	3,900						7,600	7,600	0	0.0%				
Financial Activities	7,600	7,700	7,700	7,400	7,500	7,500	7,500						17,900	18,800	-900	-4.8%				
Professional & Business Svcs	17,100	17,400	17,000	18,200	18,600	18,600	18,700						26,200	25,700	500	1.9%				
Educational & Health Services	25,400	25,600	25,700	26,900	26,800	26,400	26,400						17,100	17,300	-200	-1.2%				
Health Care	20,400	20,500	20,600	19,900	20,500	20,400	20,500						3,200	3,300	-100	-3.0%				
Leisure & Hospitality	16,500	16,600	16,800	16,900	17,000	17,800	17,900						11,400	11,500	-100	-0.9%				
Accommodation	3,100	3,200	3,200	3,200	3,100	3,400	3,500						5,600	5,800	-200	-3.4%				
Food Svcs & Drinking Places	11,000	11,000	11,100	11,600	11,500	11,700	11,700						28,700	29,000	-300	-1.0%				
Other Services	5,500	5,500	5,600	5,700	5,700	5,700	5,700						8,500	8,600	-100	-1.2%				
Government	29,100	29,500	29,200	29,600	29,600	28,600	25,600						9,900	10,200	-300	-2.9%				
Federal Government	8,400	8,400	8,400	8,400	8,500	8,600	8,600						2,400	2,500	-100	-4.0%				
State Government	9,800	10,100	10,100	10,200	10,100	9,600	9,400						10,400	10,100	300	3.0%				
State Education	2,500	2,700	2,700	2,700	2,600	2,000	1,800						7,500	7,200	300	4.2%				
Local Government	10,900	11,000	10,700	11,000	11,000	10,400	7,500													
Local Education	8,000	8,000	8,000	8,100	8,100	7,500	4,500													

The Current Employment Statistics (CES) survey is based on a survey of approximately 146,000 businesses and government agencies representing approximately 623,000 worksites throughout the United States. The primary statistics derived from the survey are monthly estimates of employment, hours, and earnings for the Nation, States, and major metropolitan areas. Estimates for the current year may be subject to large revisions that will be published early in the following year. CES data in the current year is presented as compared to CES data from the same months in the previous year.

The Quarterly Census of Employment and Wages (QCEW) program publishes a quarterly count of employment and wages reported by employers covering 98 percent of U.S. jobs, available at the county, MSA, state and national levels by industry. This data is considered to be the more definitive analysis of employment figures and trends. QCEW data in the current year is presented as compared to QCEW data from the same months in the previous year.

- Nonfarm Wage & Salary excludes self-employed workers, fishers, domestics, and unpaid family workers.

- All totals are seasonally non-adjusted totals.

- Government includes employees of public school systems and the University of Alaska.

- Source: Alaska Department of Labor and Workforce Development, Research and Analysis Section

* Note: The above numbers are representative of all people employed in the Municipality of Anchorage; this is inclusive of workers who claim residence outside of the Municipality of Anchorage. (Ex: someone who lives in the Mat-Su, but works in Anchorage would be included in these numbers)

Quick Comparisons

17 vs 16	-3,200	-2.1%
July		
17 vs 16	-3,000	-2.0%
1st Qtr		
17 vs 16	-2,900	-1.9%
2nd Qtr		
17 vs 16	-3,200	-2.0%
3rd Qtr		
17 vs 16	300	4.2%
4th Qtr		

Heidi Drygas
Commissioner

www.labor.alaska.gov



P.O. Box 111149
Juneau, AK 99811-1149
907.465.2700
commissioner.labor@alaska.gov

Press Release

COMMISSIONER'S OFFICE

FOR IMMEDIATE RELEASE
August 18, 2017

No. 17-33

For more information: **Karinne Wiebold, Economist**
907-465-6039, Karinne.Wiebold@Alaska.Gov

Unemployment Rate at 7.0 Percent in July

JUNEAU, Alaska—Alaska's seasonally adjusted unemployment rate was 7.0 percent in July, up two-tenths of a percentage point from June. The rate is up half a percentage point from the beginning of the year. The comparable national rate for July was 4.3 percent.

July employment was down by an estimated 7,500 jobs from July 2016, or 2.1 percent. Preliminary estimates show job losses spread across most industries, although the deepest losses remain concentrated in industries closely tied to oil and gas.

Oil and gas led job losses (-1,500), followed by construction (-1,200), professional and business services (-1,000) and state government (-1,000). Local and federal government and health care were the only industries to gain jobs over the year. Local government includes public schools and tribal government.

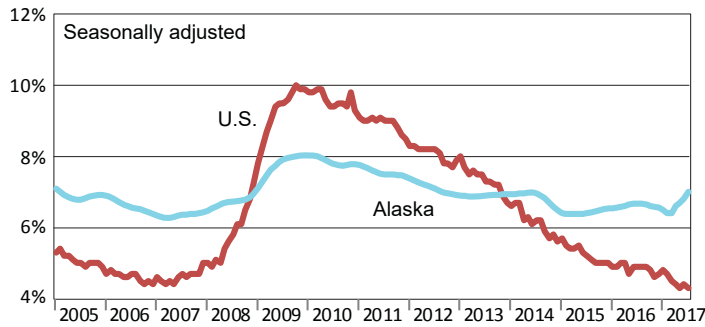
July's not-seasonally adjusted unemployment rate was 6.6 percent, down four-tenths of a percentage point from June, a slightly smaller-than-usual July decline. July and August are the peak months for seasonal employment in seafood processing, construction, and leisure and hospitality.

Across the state, unemployment rates fell in 25 of 29 boroughs and census areas. Fishing and tourism drove the lowest rates in Bristol Bay (1.6 percent), Aleutians East and West (1.9 percent and 2.8 percent, respectively) and Skagway (3.0 percent). Kusilvak Census Area continued to have the highest rate at 24.5 percent.

###

Unemployment Rates, Alaska and U.S.

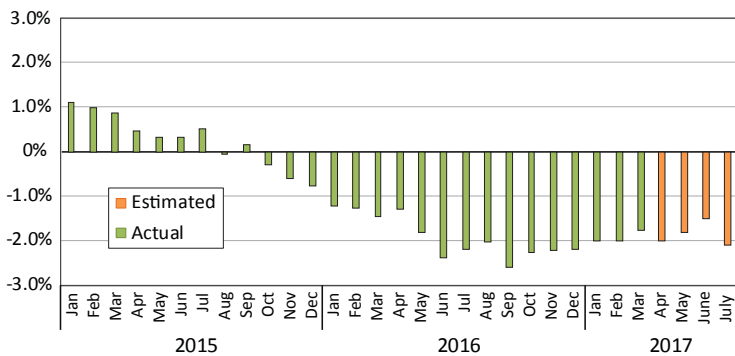
January 2005 to July 2017



Sources: Alaska Department of Labor and Workforce Development, Research and Analysis Section; and U.S. Bureau of Labor Statistics

Wage and Salary Employment

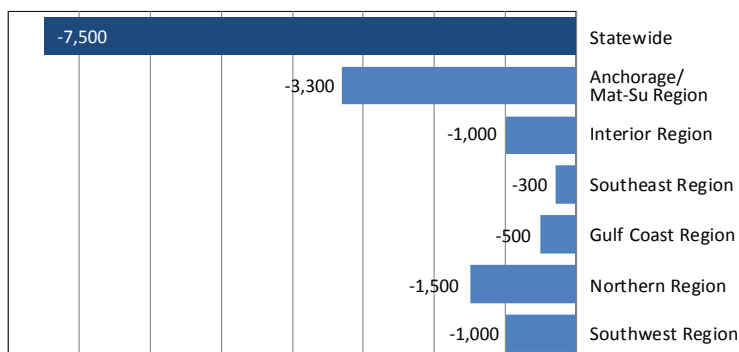
Percent change from same month the previous year



Note: Actual employment counts for 2016 are from the benchmarked Current Employment Statistics and Quarterly Census of Employment and Wages employment series. Estimated employment counts from 2017 are based on a forecast of the QCEW series.

Regional Employment

Change from July 2016 to July 2017



Source: Alaska Department of Labor and Workforce Development, Research and Analysis Section

Area Unemployment Rates

Not seasonally adjusted¹

	Rate		
	7/17 ^P	6/17	7/16
Alaska	6.6	7.0	6.1
Anchorage/Mat-Su Region	6.2	6.5	5.7
Anchorage, Municipality	5.7	5.9	5.1
Matanuska-Susitna Borough	8.1	8.6	7.6
Gulf Coast Region	6.4	7.0	6.2
Kenai Peninsula Borough	7.0	7.5	6.8
Kodiak Island Borough	4.8	5.3	4.7
Valdez-Cordova Census Area	5.2	6.0	5.2
Interior Region	6.4	6.8	5.8
Denali Borough	3.9	4.2	3.3
Fairbanks North Star Borough	5.8	6.2	5.2
Southeast Fairbanks Census Area	8.5	8.8	8.9
Yukon-Koyukuk Census Area	17.6	17.7	16.1
Northern Region	13.5	13.9	12.0
Nome Census Area	15.0	14.9	14.2
North Slope Borough	8.1	8.4	7.2
Northwest Arctic Borough	18.4	19.3	15.4
Southeast Region	5.1	5.6	4.7
Haines Borough	5.8	6.6	6.1
Hoonah-Angoon Census Area	7.5	8.1	7.4
Juneau, City and Borough	4.5	4.5	3.8
Ketchikan Gateway Borough	4.9	5.5	4.6
Petersburg Borough	7.1	8.3	6.1
Prince of Wales-Hyder CA	9.6	10.4	9.7
Sitka, City and Borough	4.0	4.6	3.5
Skagway, Municipality	3.0	3.5	3.2
Wrangell, City and Borough	5.9	7.0	5.5
Yakutat, City and Borough	7.4	8.4	6.8
Southwest Region	10.1	11.4	9.4
Aleutians East Borough	1.9	2.6	1.9
Aleutians West Census Area	2.8	3.8	2.5
Bethel Census Area	15.4	15.8	14.3
Bristol Bay Borough	1.6	4.4	1.7
Dillingham Census Area	7.9	7.8	7.8
Kusilvak Census Area	24.5	23.6	24.0
Lake and Peninsula Borough	11.4	11.5	9.4

P = Preliminary. As more information becomes available, data are revised every month for the previous month and again at the end of every calendar year.

Note: The official definition of unemployment excludes anyone who has not made an active attempt to find work in the four-week period up to and including the week that includes the 12th of the reference month.

¹Unemployment rates that are not seasonally adjusted should not be compared with those that are.

Source: Alaska Department of Labor and Workforce Development, Research and Analysis Section; and U.S. Bureau of Labor Statistics

Employment By Industry

	Average Monthly Employment			Compared to July 2016	
	July 2017 ¹	June 2017 ¹	July 2016 ²	Change	Percent
Total Nonfarm Employment	348,900	344,000	356,400	-7,500	-2.1%
Total Private	273,100	262,100	280,300	-7,200	-2.6%
Mining and Logging	12,800	12,900	14,300	-1,500	-10.5%
Oil and Gas	9,400	9,500	10,900	-1,500	-13.8%
Construction	18,200	17,200	19,400	-1,200	-6.2%
Manufacturing	23,500	15,500	24,300	-800	-3.3%
Trade, Transportation, and Utilities	68,600	67,900	70,100	-1,500	-2.1%
Wholesale	6,300	6,200	6,600	-300	-4.5%
Retail	38,000	37,700	38,800	-800	-2.1%
Transportation, Warehousing, and Utilities	24,300	23,900	24,700	-400	-1.6%
Information	6,100	6,100	6,400	-300	-4.7%
Financial Activities	12,600	12,300	12,900	-300	-2.3%
Professional and Business Services	28,600	28,700	29,600	-1,000	-3.4%
Education and Health	49,300	49,200	48,900	400	0.8%
Health Care	36,300	36,200	35,800	500	1.4%
Leisure and Hospitality	42,500	41,500	43,100	-600	-1.4%
Other Services	10,900	10,800	11,300	-400	-3.5%
Total Government	75,800	81,900	76,100	-300	-0.4%
Federal ³	16,000	16,000	15,800	200	1.3%
State ⁴	22,500	23,500	23,500	-1,000	-4.3%
Local ⁵	37,300	42,400	36,800	500	1.4%

¹Employment estimates for 2017 are based on a forecast of Quarterly Census of Employment and Wages (QCEW) data.

²Employment estimates for 2016 are from the benchmarked Current Employment Statistics employment data.

³U.S. Department of Commerce

⁴U.S. Department of Commerce

⁵U.S. Department of Commerce

