

# 20 18

## COST OF LIVING INDEX Anchorage, Alaska



The 2018 COLI is generously  
sponsored by Northrim Bank.





**AEDC**  
Anchorage Economic  
Development Corporation

# Cost of Living Index (COLI)

The Anchorage Economic Development Corporation collects cost of living data for Anchorage measuring the relative price of consumer goods and services. The Cost of Living Index (COLI) is measured nationally in 270 areas around the country by the national Council for Community and Economic Research (C2ER). The average for all areas equals 100.

Each participant area's index is a percentage of the weighted average for all prices. This index does not measure the change of prices over time (inflation), but rather the relative cost of living compared to the national average.

**128.9**

Anchorage's Cost of Living  
Index (2018)

Anchorage's overall index in 2018 was 128.9, or 128.9 percent of the national average. Another way of looking at it would be to say that the cost of living in Anchorage is 28.9% higher than the average American city.

## Nationally,

Anchorage is the 19th most expensive city of the 270 cities that participated in the 2018 COLI survey.

In 2018, the composite index for Anchorage went up to 128.9, .5 points higher than 2017. The number is a slight rise from the previous year, when Anchorage's index came in at 128.4.

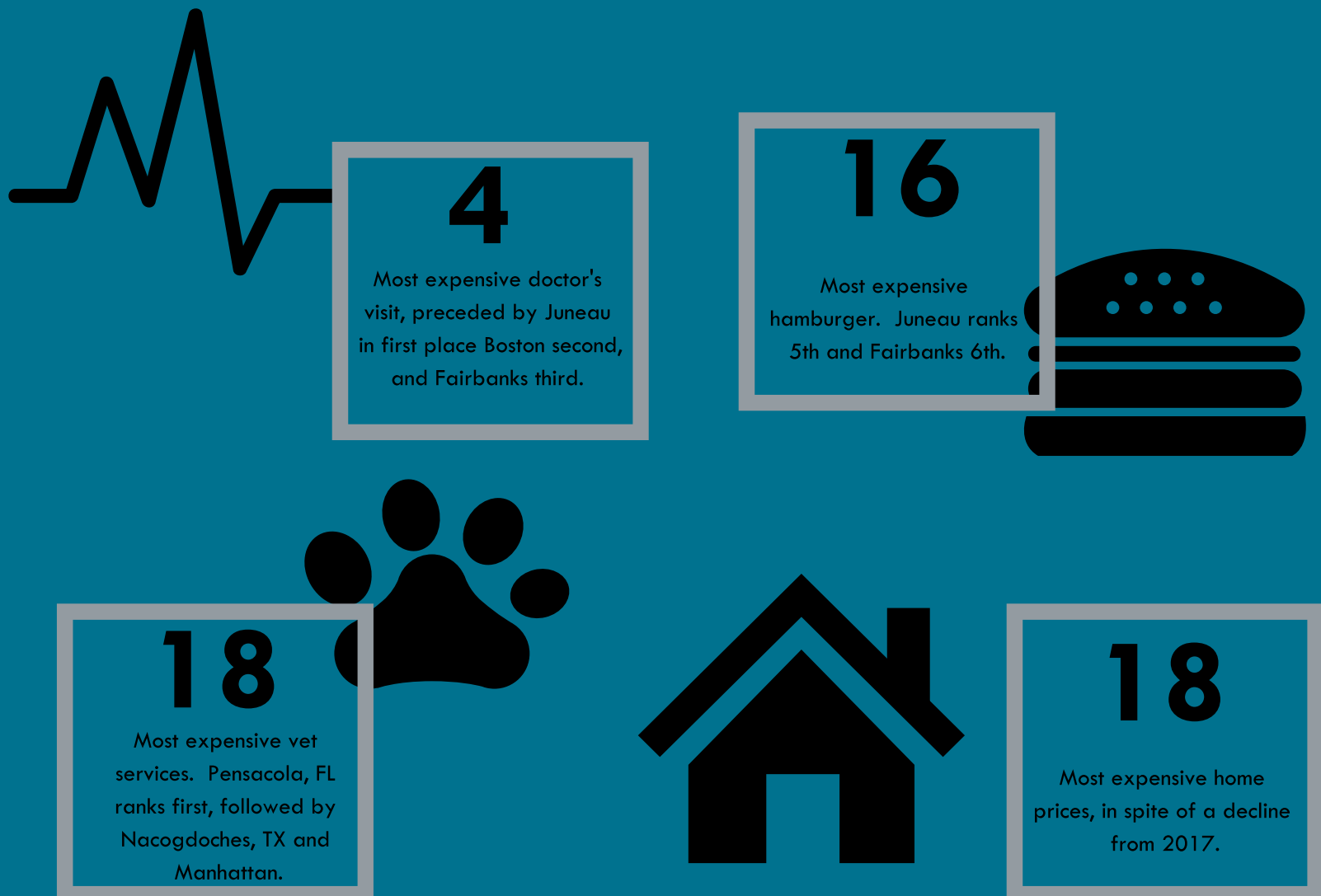
Since 2009, this index has moved between 124.6 and 132.4.

# COLI Component Indices

The COLI is made up of six component indices, which together comprise the composite index. In 2018, Anchorage's Utility and Grocery prices both rose. Utility prices in Anchorage have risen consistently since 2013. Grocery is a volatile index, which has seen fluctuations of nearly thirty points over the last decade.



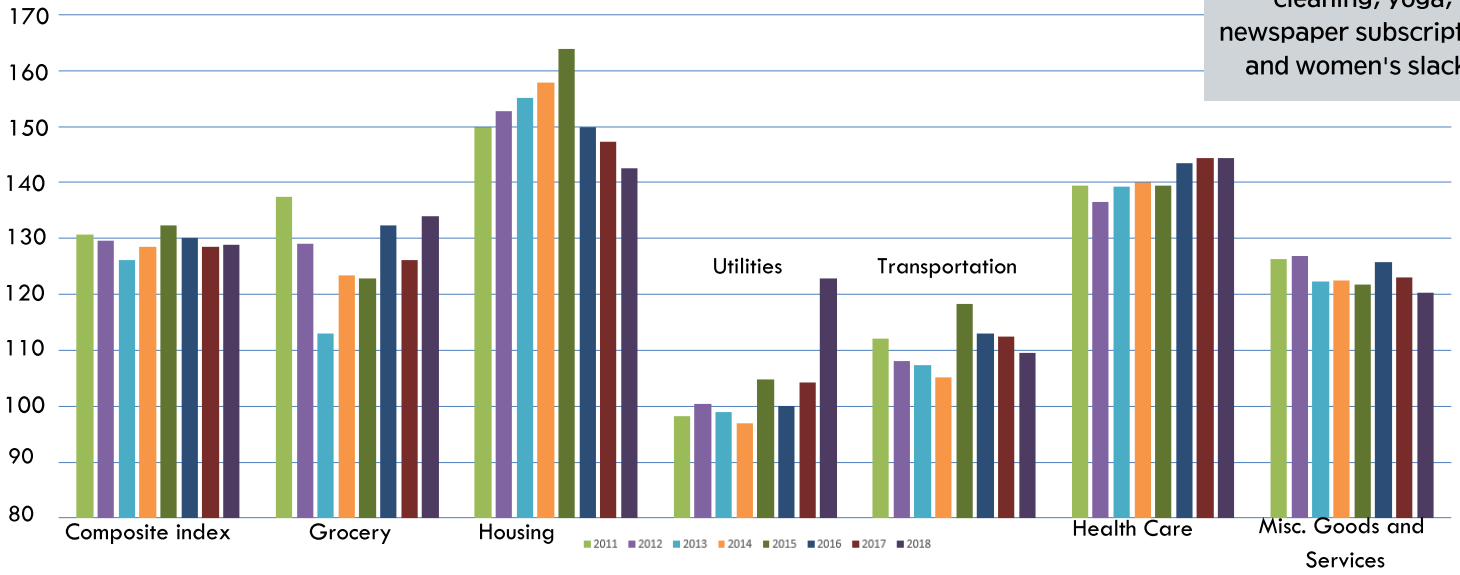
## How do we compare?



# Cost of Living: Change Over Time

## Anchorage COLI 2007-2018

"Miscellaneous" goods and services include: a hamburger, haircut, dry cleaning, yoga, newspaper subscription, and women's slacks.



### 2018 ANCHORAGE COST OF LIVING INDEX

COMPONENT	WEIGHT	2008	2009	2010	2011	2012	2013	2014	2015	2016	2017	2018	POINT CHG
OVERALL INDEX	100%	125.5	124.6	128.3	130.6	129.6	126.2	128.5	132.4	130.2	128.4	128.9	.5
GROCERY ITEMS	13.40%	142.5	129.3	134.4	137.4	129.1	113	123.4	122.8	132.4	126.1	134.0	7.9
HOUSING	29.34%	136.4	137	142.5	149.8	152.8	155.1	157.8	163.9	149.9	147.2	142.5	-4.7
UTILITIES	8.94%	97.7	101.9	94.3	98.2	100.4	99.0	97.0	104.8	100.1	104.3	122.9	18.6
TRANSPORTATION	9.22%	106.9	118.2	122	112	108	107.3	105.1	118.3	112.9	112.4	109.6	-2.8
HEALTH CARE	4.26%	130.1	127.6	135.4	139.4	136.6	139.2	139.9	139.4	143.5	144.3	144.3	0
MISC.	34.84%	123.7	120.5	124.7	126.3	126.9	122.3	122.4	121.8	125.8	123	120.3	-2.7

You might not have expected four of Anchorage's six component indices to fall or stay flat from 2017 to 2018.

## Cost of Living: Across the United States

### CITY COMPARISONS & ANCHORAGE RANKING

	COMPOSITE	GROCERY	HOUSING	UTILITIES	TRANSP.	HEALTH CARE	MISC.
<b>ANCHORAGE, AK</b>	<b>128.9</b>	<b>134.0</b>	<b>142.5</b>	<b>122.9</b>	<b>109.6</b>	<b>144.3</b>	<b>120.3</b>
<b>COLI RANKING*</b>	<b>19<sup>th</sup></b>	<b>4<sup>th</sup></b>	<b>28<sup>th</sup></b>	<b>16<sup>th</sup></b>	<b>46<sup>th</sup></b>	<b>3<sup>rd</sup></b>	<b>11<sup>th</sup></b>
TUCSON, AZ	94.4	102.3	80.6	102.2	101.7	98.4	98.6
DENVER, CO	113.2	99.0	138.8	81.0	104.5	103.1	108.8
HONOLULU, HI	189.7	166.0	309.9	172.0	141.1	116.5	124.0
BOISE, ID	97.2	95.8	91.6	87.4	113.2	104.0	99.9
CHICAGO, IL	123.2	102.7	156.9	93.0	125.6	101.8	112.4
FT. WAYNE, IN	88.0	87.4	66.8	91.1	102.0	100.8	99.9
BOSTON, MA	150.0	108.5	213.6	121.8	116.6	134.2	130.3
MINNEAPOLIS, MN	106.3	105.3	103.7	97.5	108.2	105.9	110.8
BOZEMAN, MT	103.9	105.5	110.1	86.5	95.7	105.6	104.4
RENO, NV	111.8	121.8	116.3	82.3	113.9	112.2	111.0
FARGO, ND	99.2	110.5	88.9	89.8	100.1	115.7	103.7
PORTLAND, OR	131.0	112.3	181.5	88.0	117.2	111.5	112.8
HOUSTON, TX	96.2	85.7	96.9	109.8	98.9	93.5	95.8
SEATTLE, WA	154.8	127.1	212.5	111.1	135.4	123.5	136.9
LARAMIE, WY	90.5	101.9	79.1	86.8	86.0	97.4	96.9

\*MOST EXPENSIVE = 1<sup>ST</sup>, LEAST EXPENSIVE = 269<sup>TH</sup>

Composite values for a sample of the cities included in the survey

