

**Anchorage
Mat-Su Borough
Kenai Peninsula Borough**

Unemployment Analysis

Year-To-Date, 2010

	January	February	March	April	May	June	July	August	September	October	November	December	10 YTD Avg	09 YTD Avg	10 vs 09
Anchorage						revised	preliminary								
Labor Force	158,078	157,990	157,926	157,361	155,500	156,062	155,921						156,977	153,924	3,052
Employment	146,338	145,777	145,654	146,204	144,798	145,440	146,140						145,764	143,856	1,909
Unemployment	11,740	12,213	12,272	11,157	10,720	10,622	9,781						11,215	10,069	1,146
Rate	7.4%	7.7%	7.8%	7.1%	6.9%	6.8%	6.3%						7.1%	6.5%	0.6%
Mat-Su Borough															
Labor Force	43,919	43,851	43,811	43,166	42,248	42,384	42,236						43,088	42,350	738
Employment	39,039	38,890	38,857	39,004	38,629	38,800	38,986						38,886	38,377	509
Unemployment	4,880	4,961	4,954	4,162	3,619	3,584	3,250						4,201	3,973	229
Rate	11.1%	11.3%	11.3%	9.6%	8.6%	8.5%	7.7%						9.8%	9.4%	0.4%
Kenai Peninsula Borough															
Labor Force	26,550	26,300	26,545	26,781	27,696	28,501	28,768						27,306	26,601	704
Employment	23,073	22,801	23,166	23,840	25,127	26,010	26,506						24,360	23,712	648
Unemployment	3,477	3,499	3,379	2,941	2,569	2,491	2,262						2,945	2,889	56
Rate	13.1%	13.3%	12.7%	11.0%	9.3%	8.7%	7.9%						10.8%	10.9%	-0.1%
Southcentral Region Averages															
Labor Force	228,547	228,141	228,282	227,308	225,444	226,947	226,925	-	-	-	-	-	227,371	222,876	4,495
Employment	208,450	207,468	207,677	209,048	208,554	210,250	211,632	-	-	-	-	-	209,011	205,945	3,066
Unemployment	20,097	20,673	20,605	18,260	16,890	16,697	15,293	-	-	-	-	-	18,359	16,931	1,429
Rate	8.8%	9.1%	9.0%	8.0%	7.5%	7.4%	6.7%						8.1%	7.6%	0.5%

**Industry Employment Estimates 2010
Municipality of Anchorage**

Industry	Jan	Feb	Mar	Apr	May	Jun	Jul	Aug	Sep	Oct	Nov	Dec	2010 YTD Avg.	2009 YTD Avg.	2010 vs 2009	% Change
	revised	revised	revised	revised	revised	revised	preliminary									
Total Nonfarm	146,300	147,400	148,400	149,900	151,400	154,800	152,200						150,057	150,257	-200	-0.13%
Goods Producing	10,900	11,200	11,800	12,300	13,100	14,300	14,600						12,600	13,043	-443	-3.40%
Services Providing	135,400	136,200	136,600	137,600	138,300	140,500	137,600						137,457	137,214	243	0.18%
Mining and Logging ²	2,700	2,800	2,700	2,700	2,800	2,800	2,800						2,757	2,871	-114	-3.98%
Mining	2,700	2,800	2,700	2,700	2,800	2,700	2,700						2,729	2,871	-143	-4.98%
Oil & Gas	2,700	2,700	2,600	2,700	2,700	2,600	2,600						2,657	2,729	-71	-2.62%
Construction	6,500	6,800	7,400	7,800	8,500	9,700	10,000						8,100	8,371	-271	-3.24%
Manufacturing	1,700	1,600	1,700	1,700	1,800	1,900	1,900						1,757	1,800	-43	-2.38%
Trade/Transportation/Utilities	31,400	31,100	31,300	31,600	32,200	33,100	33,200						31,986	32,757	-771	-2.35%
Wholesale Trade	4,300	4,300	4,400	4,400	4,400	4,600	4,600						4,429	4,700	-271	-5.78%
Retail Trade	16,700	16,400	16,500	16,900	17,100	17,300	17,400						16,900	16,971	-71	-0.42%
Trans/Warehouse/Utilities	10,400	10,400	10,400	10,400	10,700	11,200	11,200						10,671	11,086	-414	-3.74%
Air Transportation	3,200	3,200	3,200	3,200	3,400	3,300	3,300						3,257	3,300	-43	-1.30%
Information	3,900	3,900	3,900	3,900	3,900	4,000	4,000						3,929	4,143	-214	-5.17%
Financial Activities	8,600	8,600	8,700	8,700	8,700	8,900	9,100						8,757	8,829	-71	-0.81%
Professional & Business Svcs	17,800	18,200	18,200	18,000	18,900	19,200	19,300						18,514	18,657	-143	-0.77%
Educational & Health Services	21,500	21,400	21,300	21,500	21,400	21,400	21,600						21,443	20,671	771	3.73%
Health Care	16,000	15,800	15,800	16,100	16,100	16,100	16,200						16,014	15,471	543	3.51%
Leisure & Hospitality	14,900	15,200	15,200	15,200	15,300	15,700	15,800						15,329	15,557	-229	-1.47%
Accommodation	3,000	3,000	3,100	2,900	2,900	3,200	3,200						3,043	3,214	-171	-5.33%
Food Svcs & Drinking Places	9,800	9,900	10,300	10,200	10,400	10,600	10,700						10,271	10,243	29	0.28%
Other Services	5,700	5,700	5,800	5,800	5,800	6,000	6,100						5,843	5,729	114	2.00%
Government	31,600	32,100	32,200	32,800	32,000	32,300	28,500						31,643	30,871	771	2.50%
Federal Government	9,500	9,600	9,700	9,800	10,300	10,300	10,100						9,900	9,557	343	3.59%
State Government	10,600	10,800	10,800	10,900	10,100	10,500	10,200						10,557	10,271	286	2.78%
State Education	2,500	2,700	2,700	2,700	1,900	2,000	1,800						2,329	2,314	14	0.62%
Local Government	11,500	11,700	11,600	12,100	11,600	11,500	8,100						11,157	11,043	114	1.03%
Local Education	8,500	8,700	8,700	8,600	8,600	8,400	7,700						8,457	7,729	729	9.43%
Tribal Government ¹	-	-	-	-	-	-	-						-	-		

¹ Nonfarm Wage & Salary excludes self-employed workers, fishers, domestics, and unpaid family worker

² Government includes employees of public school systems and the University of Alaska.

Beginning January 2001, wage and salary employment estimates were published under a new classification system. The Standard Industrial Classification system (SIC) has been replaced by the North American Industry Classification System (NAICS). Data prior to 2001 are comparable only at the Total Nonfarm and Government levels.

¹ As of January 2001, certain federally-recognized tribal entities were moved to Local Government, which created a series break for Total Government and Local Government. Please see the April 2002 Alaska Economic Trends publication for a detailed explanation.

² This category was called "Natural Resources and Mining" in previous years. The change is in name only; the industries it includes remain the same.

Source: Alaska Department of Labor and Workforce Development, Research and Analysis Section

10 vs 09		
July	-500	-0.33%
10 vs 09		
1st Qtr	-167	-0.11%
10 vs 09		
2nd Qtr	-133	-0.09%
10 vs 09		
3rd Qtr	-250	-0.16%
10 vs 09		
4th Qtr	=	#VALUE!

[Contact us by Email if you have any questions about the data.](mailto:info@aedcweb.com)



AEDC
Anchorage Economic
Development Corporation

510 L Street, Suite 603
Anchorage, AK 99501

(907) 258-3700

www.aedcweb.com

**Industry Employment Estimates 2010
State of Alaska**

Industry	Jan	Feb	Mar	Apr	May	Jun	Jul	Aug	Sep	Oct	Nov	Dec	2010 YTD Avg.	2009 YTD Avg.	2010 vs 2009	% Change
	revised	revised	revised	revised	revised	revised	preliminary									
Total Nonfarm	306,900	311,100	313,600	314,900	325,200	344,100	351,300						323,871	319,686	4,186	1.31%
Goods Producing	38,700	41,400	42,000	41,000	44,800	54,500	63,800						46,600	44,629	1,971	4.42%
Services Providing	268,100	269,700	271,600	273,900	280,400	289,600	287,500						277,257	275,057	2,200	0.80%
Mining and Logging ²	14,300	15,000	15,300	15,600	16,600	17,500	17,700						16,000	15,500	500	3.23%
Mining	14,200	14,800	14,900	14,300	16,300	17,100	17,300						15,557	15,314	243	1.59%
Oil & Gas	12,200	12,700	12,600	12,200	12,200	12,000	12,000						12,271	13,243	-971	-7.34%
Construction	12,300	13,000	13,300	14,700	17,000	19,000	19,900						15,600	15,586	14	0.09%
Manufacturing	12,100	13,400	13,400	10,700	11,200	18,000	26,200						15,000	13,543	1,457	10.76%
Trade/Transportation/Utilities	60,600	60,500	61,200	61,700	64,500	67,300	67,900						63,386	62,843	543	0.86%
Wholesale Trade	6,000	6,000	6,100	6,200	6,400	6,700	6,900						6,329	6,329	0	0.00%
Retail Trade	34,900	34,800	35,200	35,600	37,000	37,600	38,300						36,200	35,229	971	2.76%
Trans/Warehouse/Utilities	19,700	19,700	19,900	19,900	21,100	22,700	22,700						20,814	21,286	-471	-2.21%
Air Transportation	6,100	5,800	5,700	5,700	5,700	5,600	5,700						5,757	6,029	-271	-4.50%
Information	6,400	6,400	6,400	6,300	6,400	6,400	6,400						6,386	6,657	-271	-4.08%
Financial Activities	14,100	13,900	13,800	14,000	13,900	14,000	14,100						13,971	14,600	-629	-4.31%
Professional & Business Svcs	23,600	23,600	23,700	23,900	24,800	25,500	25,800						24,414	26,214	-1800	-6.87%
Educational & Health Services	40,100	40,300	40,400	40,100	40,100	39,900	40,500						40,200	38,700	1500	3.88%
Health Care	29,000	29,200	29,100	29,000	28,800	28,500	29,000						28,943	27,843	1100	3.95%
Leisure & Hospitality	27,500	27,500	27,800	29,300	33,300	38,000	40,100						31,929	30,943	986	3.19%
Accommodation	6,100	6,100	6,100	6,600	7,300	10,400	11,600						7,743	7,686	57	0.74%
Food Svcs & Drinking Places	17,600	17,500	17,700	18,400	20,500	22,000	22,600						19,471	18,743	729	3.89%
Other Services	11,500	11,200	11,100	11,100	11,100	11,100	11,000						11,157	11,414	-257	-2.25%
Government	84,400	86,300	87,200	87,500	86,300	87,400	81,700						85,829	83,700	2129	2.54%
Federal Government	16,300	16,500	17,000	17,400	18,800	19,200	18,800						17,714	17,086	629	3.68%
State Government	25,000	26,100	26,300	26,600	25,000	25,500	25,200						25,671	25,029	643	2.57%
State Education	7,000	8,000	8,000	8,100	6,600	6,100	5,700						7,071	6,971	100	1.43%
Local Government	43,100	43,700	43,900	43,500	42,500	42,700	37,700						42,443	41,571	871	2.10%
Local Education	24,600	25,100	25,100	25,500	24,000	22,900	17,300						23,500	22,900	600	2.62%
Tribal Government ¹	-	-	-	-	-	-	-									

¹ - Nonfarm Wage & Salary excludes self-employed workers, fishers, domestics, and unpaid family workers.

- Government includes employees of public school systems and the University of Alaska.

- Beginning January 2001, wage and salary employment estimates were published under a new classification system. The Standard Industrial Classification system (SIC) has been replaced by the North American Industry Classification System (NAICS). Data prior to 2001 are comparable only at the Total Nonfarm and Government levels.

^{1/} As of January 2001, certain federally-recognized tribal entities were moved to Local Government, which created a series break for Total Government and Local Government. Please see the April 2002 Alaska Economic Trends publication for a detailed explanation.

^{2/} This category was called "Natural Resources and Mining" in previous years. The change is in name only; the industries it includes remain the same.

- Source: Alaska Department of Labor and Workforce Development, Research and Analysis Section

10 vs 09		
July	7,800	2.44%
10 vs 09		
1st Qtr	4,067	1.33%
10 vs 09		
2nd Qtr	3,100	0.95%
10 vs 09		
3rd Qtr	3,900	1.14%
10 vs 09		
4rd Qtr	0	#DIV/0!

[Contact us by Email if you have any questions about the data.](#)



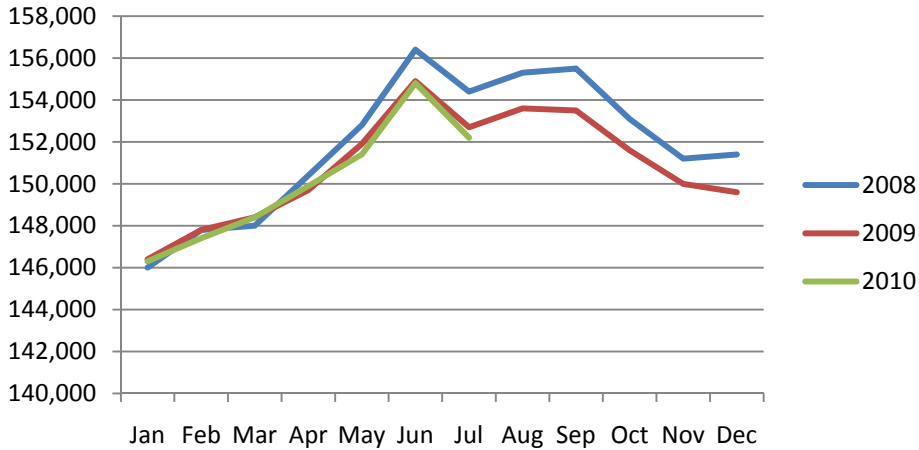
AEDC
Anchorage Economic
Development Corporation

510 L Street, Suite 603
Anchorage, AK 99501

(907) 258-3700

www.aedcweb.com

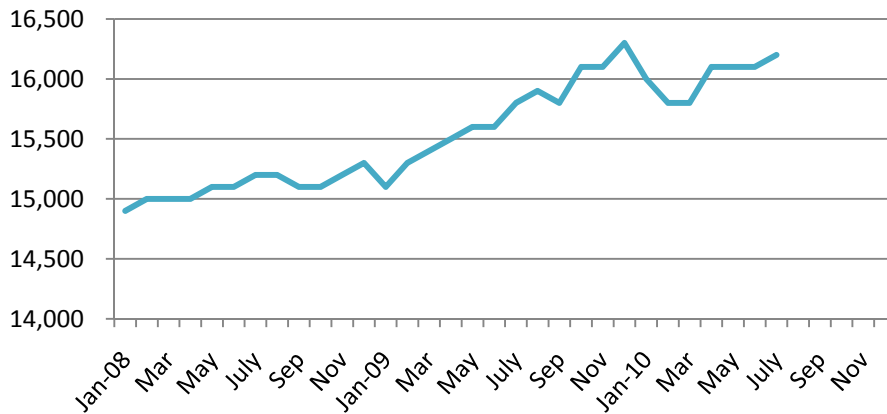
Anchorage Employment



Municipality of Anchorage employment decreased to 152,200 in July of 2010. The city has remained on a similar track of employment as of 2009, showing somewhat depressed levels compared to 2008. Local education has shown the largest change in average employment year over year, adding 730 jobs (a 9.5% increase) compared to July 2009. Wholesale trade has shown the largest fall in percent employment loss over the year, having lost 270 jobs, a 5.8% decrease.

Health Care Employment

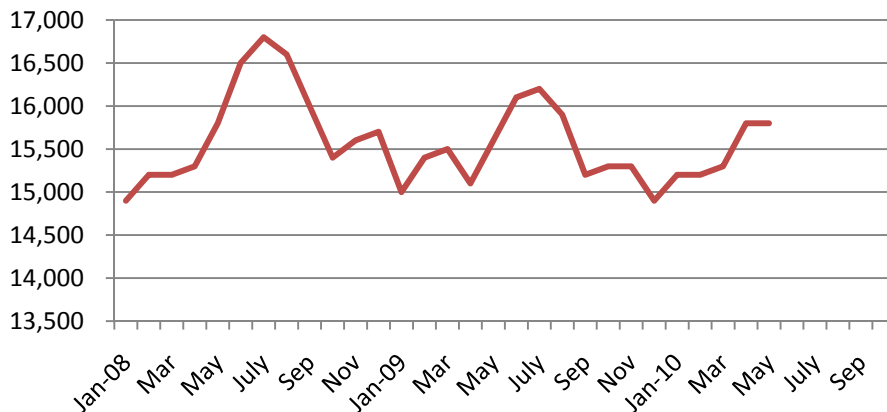
Municipality of Anchorage 2008-Present



Over the previous three years, health care has been one of the fastest growing sectors in the Municipality of Anchorage. July figures show health care employment up 543 jobs year to date compared to 2009. When included in the broader education and health services industry, employment is up 771 jobs year over year.

Leisure & Hospitality Employment

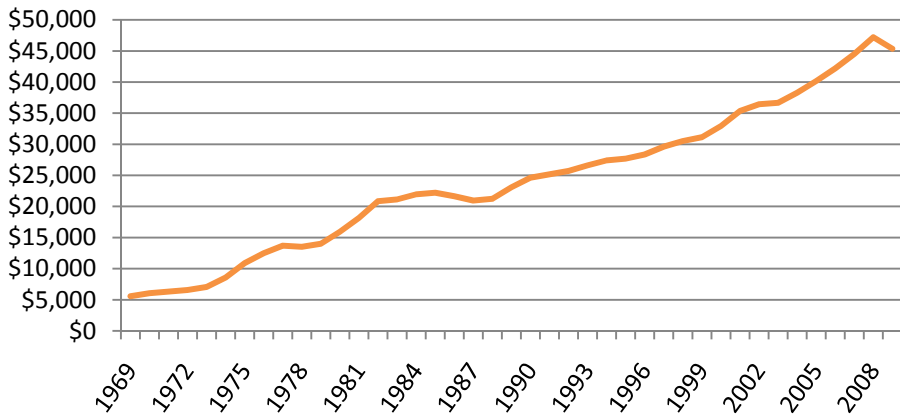
Municipality of Anchorage 2008-Present



Leisure and hospitality employment has always been seasonal and cyclical, and the recession has exacerbated the volatility in the industry. Employment has not recovered from the high experienced in 2008, and employment is down 1,000 jobs from then. Summer employment has not been as low as the current level since 2004.

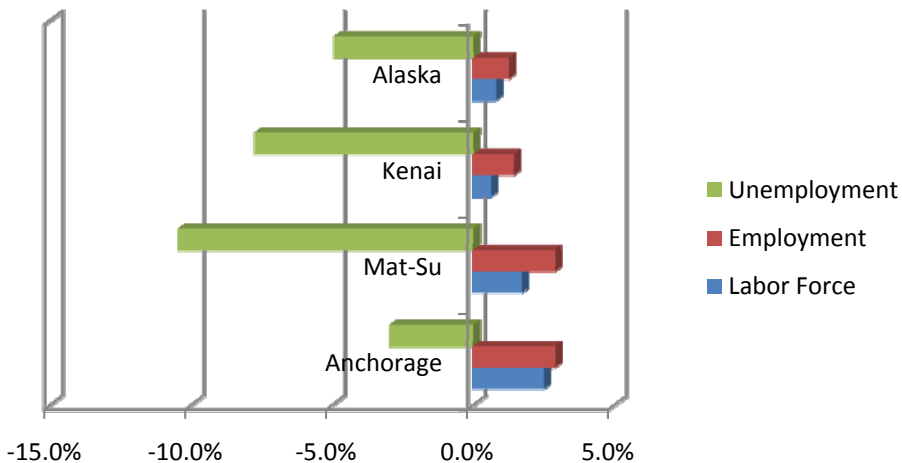
Per Capita Income

Alaska 1969-2009



Year-over-year Percent Change

July 2009-July 2010



Alaska has been one of the highest per capita income earning states in the nation for many years. New data from the Federal Reserve Bank of St. Louis shows Alaska's 2009 per capita income decreasing for the first time since 1985-1987. However, this preliminary data does not suggest Alaska's are getting any poorer. Rather it mirrors a lower economic output nationally that is now being felt in Alaska.

Alaska and the Southcentral region have shown positive gains in employment and the labor force, as well as sharp decreases in unemployment. Seasonal work may have a large impact, as well as the lessening of the effects of the recession on Alaska. Anchorage and the Matanuska-Susitna Borough have had employment increases on 2.9%. Anchorage showed a decrease in the unemployed of 3%, while Kenai showed -7.7% and Mat-Su -10%. Employment in the state of Alaska increased 1.2% compared to one year ago.

Click Bishop
Commissioner

P.O. Box 111149
Juneau, AK 99811-1149

www.labor.alaska.gov

STATE OF ALASKA

DEPARTMENT OF LABOR
AND WORKFORCE DEVELOPMENT

Beth Leschper
Communications Director

907.465.2700
cell: 907.723.1321

beth.leschper@alaska.gov

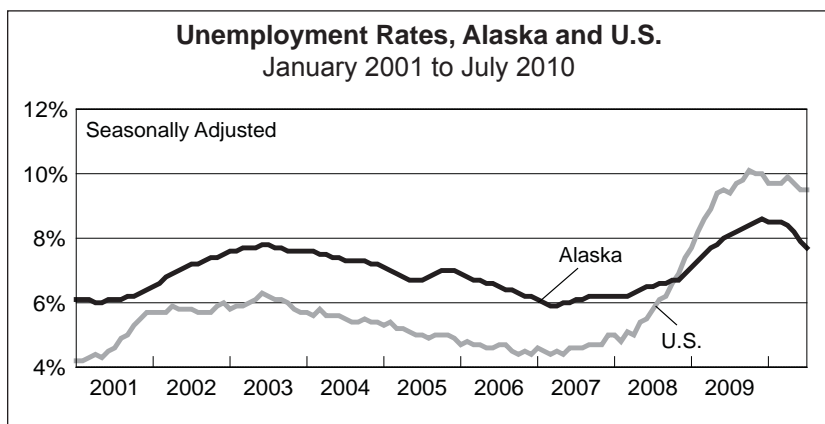
Press Release

COMMISSIONER'S OFFICE

August 20, 2010

No. 10-52

Unemployment rate at 7.7 percent in July



Alaska Nonfarm Payroll Employment¹

	Preliminary 7/10	Revised 6/10	Revised 7/09	Year-over-year change	
				7/09	90% confidence interval ²
Total Nonfarm Employment ³	351,300	344,100	343,700	7,600	217 14,983
Mining and Logging	17,700	17,500	15,300	2,400	1,607 3,193
Oil and Gas	12,000	12,000	12,700	-700	- -
Construction	19,900	19,000	19,500	400	-2,183 2,983
Manufacturing	26,200	18,000	23,100	3,100	2,106 4,094
Seafood Processing	19,300	11,900	19,100	200	- -
Trade, Transportation and Utilities	67,900	67,300	67,600	300	-2,072 2,672
Retail Trade	38,300	37,900	37,300	1,000	-1,028 3,028
Information	6,400	6,400	6,600	-200	-781 381
Financial Activities	14,100	14,000	15,300	-1,200	-3,143 743
Professional and Business Services	25,800	25,500	27,600	-1,800	-3,593 -7
Educational ⁴ and Health Services	40,500	39,900	39,300	1,200	-68 2,468
Health Care	29,000	28,500	28,400	600	- -
Leisure and Hospitality	40,100	38,000	37,800	2,300	263 4,337
Accommodations	11,600	10,400	11,000	600	- -
Food Svcs. and Drinking Places	22,600	22,000	21,100	1,500	- -
Other Services	11,000	11,100	11,700	-700	-3,876 2,476
Government ⁵	81,700	87,400	79,900	1,800	- -

Notes:

A dash indicates that confidence intervals are not available at this level of detail.

The U.S. Department of Labor's Bureau of Labor Statistics has implemented a change to the method used to produce statewide wage and salary employment estimates, which has resulted in increased monthly volatility in the wage and salary estimates for many states, including Alaska. Therefore, one should be cautious in interpreting any over-the-year or month-to-month change for these monthly estimates. The Quarterly Census of Employment and Wages series may be a better information source (<http://labor.alaska.gov/qcew.htm>).

¹ Not seasonally adjusted

² Based on the margin of error of the estimate, a 90 percent confidence interval statistically determines a range of values within which the "true" value falls with a 90 percent level of confidence. For more information, go to <http://labor.alaska.gov/research/c-i.pdf>.

³ Excludes the self-employed, fishermen and other agricultural workers, and private household workers

⁴ Private education only

⁵ Includes public schools, the University of Alaska and federally recognized tribal entities

Sources for graph and tables: Alaska Department of Labor and Workforce Development, Research and Analysis Section; and U.S. Bureau of Labor Statistics

Alaska's seasonally adjusted unemployment rate for July was 7.7 percent. June's preliminary unemployment rate was unchanged at 7.9 percent. The comparable national rate was 9.5 percent. The unemployment rate for Alaska is 0.4 percent lower than last year at this time, but the U.S. rate is about the same – it was 9.4 percent one year ago. Alaska's unemployment rate continues to trend downward from its high of 8.6 percent in December of last year.

The number of weeks claimed for regular unemployment insurance benefits fell in July and was 5 percent below year ago levels. However, weeks claimed for Alaska's unemployment extension programs are running 90 percent higher than one year ago – a growing number of claimants are filing for extended benefits. These types of programs are a result of the national recession, and the increase in filers is a reminder that the broader job market remains very competitive.

Not seasonally adjusted unemployment rates fell in every region in the state in July – a predictable occurrence for this time of the year. During six of the last ten years, Alaska's employment has peaked in July. Construction, seafood processing, and visitor industry related jobs reach their peak or near peak level of activity in July.

As in June, the lowest rates were recorded in the Skagway Municipality and Bristol Bay Borough. July's unemployment rates were similar to year ago levels for most areas of the state. The Wade Hampton and Nome census areas had the highest jobless rates. Six areas in the state had double-digit unemployment rates in July.

Unemployment Rates, Seasonally Adjusted

	7/10	6/10	7/09
Alaska	7.7%	7.9%	8.1%
U.S.	9.5%	9.5%	9.4%

Contact: Neal Fried, Economist (907) 269-4861

Research and Analysis' Web site: <http://laborstats.alaska.gov>

Labor Force by Borough and Census Area, Not Seasonally Adjusted¹

	Civilian Labor Force			Unemployed					
	7/10 ^P	6/10	7/09	Number			Rate		
				7/10 ^P	6/10	7/09	7/10 ^P	6/10	7/09
Alaska Statewide	373,857	368,737	370,893	25,619	28,068	26,949	6.9	7.6	7.3
Anchorage/Mat-Su Region	198,157	198,446	193,628	13,031	14,206	13,710	6.6	7.2	7.1
Municipality of Anchorage	155,921	156,062	152,108	9,781	10,622	10,080	6.3	6.8	6.6
Matanuska-Susitna Borough	42,236	42,384	41,520	3,250	3,584	3,630	7.7	8.5	8.7
Gulf Coast Region	42,286	41,495	42,892	3,048	3,328	3,202	7.2	8.0	7.5
Kenai Peninsula Borough	28,768	28,501	29,266	2,262	2,491	2,418	7.9	8.7	8.3
Kodiak Island Borough	6,843	6,815	6,875	426	454	396	6.2	6.7	5.8
Valdez-Cordova Census Area	6,675	6,179	6,751	360	383	388	5.4	6.2	5.7
Interior Region	56,017	56,052	55,695	3,643	4,049	3,961	6.5	7.2	7.1
Denali Borough	2,075	2,222	2,444	86	96	92	4.1	4.3	3.8
Fairbanks North Star Borough	47,399	46,956	46,592	2,867	3,185	3,130	6.0	6.8	6.7
Southeast Fairbanks Census Area	3,691	3,736	3,737	310	334	317	8.4	8.9	8.5
Yukon-Koyukuk Census Area	2,852	3,138	2,922	380	434	422	13.3	13.8	14.4
Northern Region	11,833	11,887	12,053	1,203	1,304	1,165	10.2	11.0	9.7
Nome Census Area	3,735	3,779	3,719	546	578	534	14.6	15.3	14.4
North Slope Borough	5,028	5,042	5,288	268	290	251	5.3	5.8	4.7
Northwest Arctic Borough	3,070	3,066	3,046	389	436	380	12.7	14.2	12.5
Southeast Region	44,112	41,725	44,888	2,590	2,816	2,726	5.9	6.7	6.1
Haines Borough	2,049	1,539	2,046	88	103	102	4.3	6.7	5.0
Hoonah-Angoon Census Area ²	1,517	1,470	1,550	143	155	124	9.4	10.5	8.0
Juneau Borough	18,578	18,305	19,050	960	1,034	1,043	5.2	5.6	5.5
Ketchikan Gateway Borough ²	9,723	9,074	9,957	524	586	510	5.4	6.5	5.1
Prince of Wales-Outer Ketchikan Census Area ²	2,548	2,439	2,578	328	333	339	12.9	13.7	13.1
Sitka Borough	5,143	4,800	5,018	272	294	283	5.3	6.1	5.6
Skagway Municipality ²	821	790	881	17	21	47	2.1	2.7	5.3
Wrangell-Petersburg Census Area ²	3,403	2,969	3,465	232	261	250	6.8	8.8	7.2
Yakutat Borough	330	339	343	26	29	28	7.9	8.6	8.2
Southwest Region	21,458	19,131	21,737	2,106	2,363	2,185	9.8	12.4	10.1
Aleutians East Borough	1,426	1,048	1,453	83	93	95	5.8	8.9	6.5
Aleutians West Census Area	3,115	2,927	3,173	160	190	169	5.1	6.5	5.3
Bethel Census Area	7,160	6,956	7,173	1,030	1,134	1,007	14.4	16.3	14.0
Bristol Bay Borough	3,171	1,917	3,151	31	39	32	1.0	2.0	1.0
Dillingham Census Area	2,795	2,233	2,856	189	226	217	6.8	10.1	7.6
Lake and Peninsula Borough	1,402	1,423	1,489	72	85	78	5.1	6.0	5.2
Wade Hampton Census Area	2,389	2,627	2,442	541	596	587	22.6	22.7	24.0

P = Preliminary. As more information becomes available, data are revised every month for the previous month and again at the end of every calendar year.

Note: The official definition of unemployment excludes anyone who has not made an active attempt to find work in the four-week period up to and including the week that includes the 12th of the reference month. Many individuals in rural Alaska do not meet the definition because they have not conducted an active job search due to the scarcity of employment opportunities.

¹ Unemployment rates that are not seasonally adjusted should not be compared with those that are.

² Because of the creation of new boroughs, this borough or census area has been changed or no longer exists. Data for the Skagway Municipality and Hoonah-Angoon Census Area (previously the Skagway-Hoonah-Angoon Census Area) became available in 2010. Data for the Wrangell Borough, and Petersburg and Prince of Wales-Hyder census areas will be available in 2011. Until then, data will continue to be published for the old areas.

Source: Alaska Department of Labor and Workforce Development, Research and Analysis Section; U.S. Bureau of Labor Statistics