

ANCHORAGE

Economic Profile

"One of the best cities
for riding out a recession."
~Business Week.

"In 2008, Anchorage was named a
third-time winner of the Top 100
Best Places for Young People"

For more info call (907) 258-3700 or visit www.AEDCweb.com



AEDC
Anchorage Economic
Development Corporation

LIVE, WORK & PLAY in Anchorage

LIVE

Location

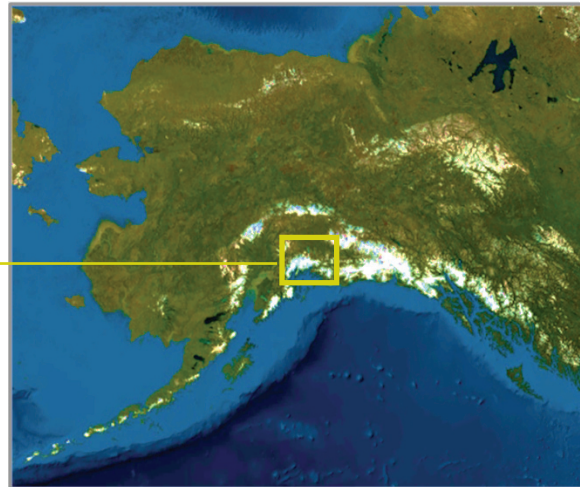
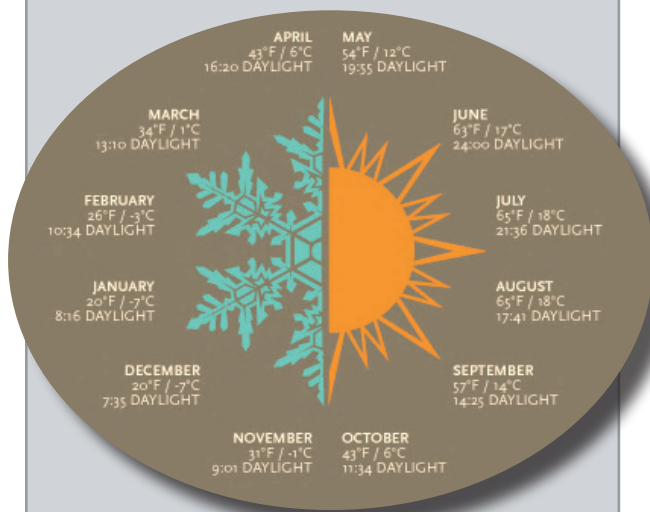
Anchorage is located in **south central Alaska** in Cook Inlet. Anchorage sits in a bowl with Cook Inlet on one side and the Chugach National Park on the other.

Climate

Anchorage has long been plagued with many misconceptions about being cold and dark. The truth is Anchorage is far south of the Arctic Circle. Protected by the Chugach Mountains and warmed by Japanese currents of the Pacific Ocean, the **climate is actually temperate year-round**.

65°F Average Summer Temp.

24°F Average Winter Temp..



SUMMERS: Let there be light! In Anchorage, there are **24 hours of functional daylight** on Summer Solstice. Summer highs average 65 degrees F (18 degrees Celsius).

WINTERS: Winters bring on the snow with high temperatures averaging about 24 degrees F (-5 degrees Celsius) and lows averaging 12 degrees F (-12 degrees Celsius), creating a climate very much like ski resorts in the Rocky Mountains, Canada or Europe. The day with the least amount of sunlight is on Winter Solstice, yet Anchorage still enjoys five hours, 28 minutes of daylight.

24 Hours of sunlight on SUMMER SOLSTICE

5 Hours of sunlight on WINTER SOLSTICE

Cost of Living

Anchorage carries a **relatively high cost of living** index compared to the U.S. average. Alaska's location requires goods to be shipped from the lower 48, which drives up the cost of goods in almost any sector.

However, in a state wide comparison, Anchorage has an advantageous position in terms of living costs. Most goods are shipped directly from the lower 48 into Anchorage, and distributed further

\$317,000

Average Home Sale Price

\$74,396

Median Household Income

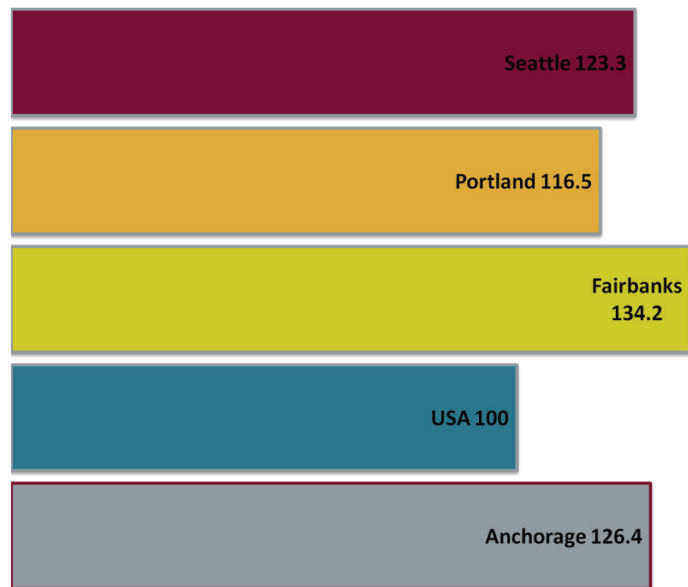
296,400

2010 Anchorage Population

Population

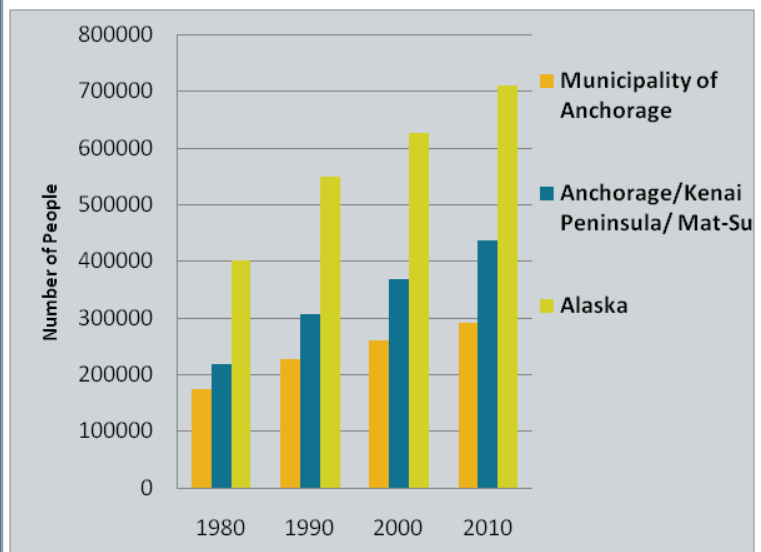
Anchorage can proudly look back to a consistently **growing population** over the past 30 years. Since 1980 the population has **grown by over 55%**. In the 1980s the city experienced a boom in population numbers; the increase was as high as 30% from 1980 till 1990. During the following two decades **population has increased by over 30,000 people in each decade.**

Cost of Living Index Comparison (USA is 100)



Average Housing Prices

\$317,000	Average Home Sale Price
\$255,900	Median Value of Owner Occupied Homes
\$1,127	Monthly Apartment Rent
61%	Home Ownership Rate
275,250	Total Households
\$74,396	Median Household Income
2.66	Average Household Size



Alaska Boroughs' Population Density

Boroughs	Size in Square Miles	2010 Population Size	Population
Matanuska-Susitna Borough	23,000	88,995	3.87
Kenai Peninsula Borough	16,013	55,400	3.46
Fairbanks Northstar Borough	25,260	97,581	3.86
Juneau Borough	3,255	31,275	9.61

City Information

Anchorage shows an increasingly **diverse population** profile. The Anchorage school district welcomes diversity because it provides students the ability to interact with peers from many different backgrounds, expanding their knowledge of other cultures and preparing for life in a global society.

34% of the population is non-white, non-hispanic

50% minority student population of Anchorage School District

Age Comparison

The graph underlines the certificate that Anchorage **“belongs to the 100 best places to live for young people.”** Over **2/3** of the city population is **younger than 50 years**. Note, the age group of **30-49 Years has over 82,000** representatives, however, the age group encompasses 20 years while most other age groups depicted only count for generations of 5, 10 or 15 years.

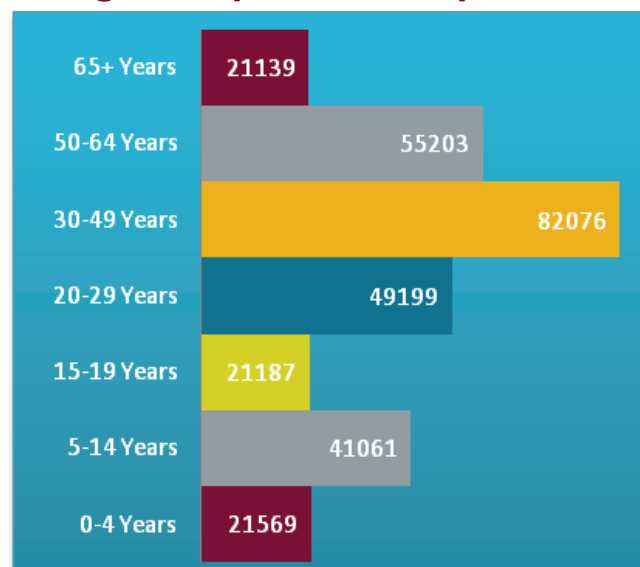
2/3 of the population is **YOUNGER** than 50 years

Diversity

5.56%	Black
7.56%	Hispanic
65.96%	White (non-Hispanic)
7.93%	Alaska Native/American Indian
8.05%	Asian
2.02%	Native Hawaiian/American Islander
2.35%	Multi-Ethnic



Age Comparison Composition



Public Sector Services

Anchorage is governed by an elected mayor and 11 assembly members with the assistance of a city manager. None of these members run under a party banner. The mayor is elected in a citywide vote while assembly members are elected from different city districts.

Education

K12 EDUCATION: The Anchorage School District (ASD) is one of the **100 largest school districts in the country** and has approximately **50,000 students** in attendance. ASD services the whole municipality including Anchorage, Eagle River, Chugiak and Girdwood and collectively manages about **90 different schools** within the district.

ASD students speak **87 different languages** at home. After English, the 5 most common are **Spanish, Hmong, Samoan, Filipino & Yup'ik**.

50,000 students

100 largest school districts in the country

87 languages spoken by ASD students at home

HIGHER EDUCATION: Anchorage has 3 institutions of Higher Education.

1.) UAA: University of Alaska Anchorage is the **state's largest post-secondary institution**. UAA is comprised of six teaching units at the Anchorage campus: Education, Health and Social Welfare, Arts and Sciences, Business and Public Policy, Community and Technical College and the School of Engineering. The University offers career pathway programs featuring 37 associates, 56 bachelors and 36 master's degrees, as well as 29 vocational and professional certificates. UAA is fully accredited by the Northwest Commission on Colleges and Universities.



Image: UAA

2.) APU: Alaska Pacific University (APU) is an accredited university and belongs to the **Eco League**, a consortium of five small **liberal arts** institutions that share similar missions and value systems based on environmental responsibility, social change, and educating students to build a sustainable future. The school now offers 11 undergraduate majors and 5 graduate programs. They also offer an early honors program where High School Seniors get an opportunity to take their senior year classes at APU fulfilling their high school requirements and getting a head start on their college education.

3.) Wayland Baptist University in Anchorage was established in 1985 with 12 students and has seen consistent growth. Campus locations are in Anchorage, Wasilla, Ft. Richardson Army Post, and Elmendorf AFB. Wayland designs programs around the needs of **men and women serving in the United States armed services**. The school currently offers 3 baccalaureate programs and 6 Master degree programs, all tailored towards the field of business, teaching or Christian ministry.

Medical

Anchorage is served by **four general hospitals**. A newly constructed VA Medical Center serves military veterans – in addition to many smaller clinics and health care facilities.



Image: Providence Hospital, Crystal Bailey

The **POLICE DEPARTMENT** has approximately **516 employees** (362 sworn and 154 non-sworn). The Anchorage Police Department is the **largest police department in Alaska** serving a population of roughly 300,000 in a service area encompassing 159 square miles. There are several specialized units including Canine, Special Weapons and Tactics (SWAT), Homicide Response Team, Hostage Negotiations Team, Bomb Team, School Resource Officer (SRO), Crisis Intervention Team (CIT), Identification Section, Data System Section, Records Section, Traffic and Crime Prevention Unit. APD's Homicide Response Team has been **nationally recognized** for their techniques and solvability rate.

Providence Alaska Medical Center

The **state's largest hospital**, 371-bed Providence Alaska Medical Center located in Anchorage, offers a multitude of **high-quality services** including: Adult Critical Care, Behavioral Health Services, Children's Hospital, Comprehensive Cancer Program, LifeMed Alaska Air Ambulance, Orthopedic Services, etc. Providence has a **long history of serving Alaska**, dating back more than 100 years to the Gold Rush, when the Sisters of Providence brought health care to Nome. Providence is now the **state's largest health care provider** and **largest private sector employer**.

Alaska Regional Hospital

With more than **1,000 employees** and a **medical staff of over 450 independent practitioners**, Alaska Regional offers a broad spectrum of health services to the community. The hospital offers **free immunization clinics** that are held monthly for area schoolchildren. Other services include **free prostate cancer screenings**, health education seminars, community health fairs and support groups for cancer and stroke survivors. In 1995, 1998, 2001, 2004, and 2007, the hospital was accredited by The Joint Commission, the nation's leading healthcare monitoring organization.

Alaska Native Medical Center

As an acute, specialty, primary and behavioral healthcare provider, Alaska Native Medical Center (ANMC) provides comprehensive medical services to Alaska Native and American Indian people living within the state. ANMC provides a **full range of medical specialties** and services with more than **250** Board-certified physicians, over **700** nurses on staff, **150** hospital beds and the **56** room (108 bed) Qujana House. For the second consecutive time, ANMC has been **awarded the prestigious Magnet designation** by the American Nurses Credentialing Center.

FIRE DEPARTMENT

consists of five divisions including:

1.) Administration 2.) Fire & EMS operations
3.) Training 4.) Fire Prevention
5.) Support Services. There are approximately **391 fire fighters** currently working in Anchorage and staff the twelve fire stations in the city. There are seven Basic Life Support, five Advanced Life Support engine companies, four truck companies, three aeriels, a heavy rescue company, and four tankers that serve as front line suppression and Emergency Medical Service (EMS) response units. Seven Mobile Intensive Care Units, Fire and EMS Battalion Chiefs complete the 24-hour unit staffing.

TRANSPORTATION

Public Transportation & Highways

People Mover Anchorage	55 Buses, 14 intra-city routes & Anchor Rides (service for people w/ disabilities)
Glacier Valley Transit	Fixed route service in Girdwood
MASCOT (Mat-Su Transit)	Fixed route service in Mat-Su borough
Valley Mover	Transportation btw. Wasilla & Anchorage
Highways	Glen Highway & Seward Highway (Alaska Route 1), Parks Highway (Alaska Route 3)

200 million miles of travel per year for People Mover buses

RAILROAD

The Alaska Railroad is an independent corporation owned by State of Alaska and managed by a seven-member board of directors appointed by the Governor. It is mandated to be self-sustaining, responsible for all financial and legal obligations. The Alaska Railroad system does not connect to the Lower 48 States via an overland route; it connects using rail-barges that travel between Whittier, Alaska and the Port of Seattle, Washington.

Miles of Main Line	467
Miles of Branch Line	54
Total Miles of Track	656
# of Freight Cars	1,381
# of Passenger Cars	45
# of Locomotives	51
Passenger Travels 2010	405,135
Freight Tonnage 2010	6.33Mio
# of Year Round Employees	641

PORT OF ANCHORAGE

The Port serves **80% of Alaska's population** and **90% of the consumer goods of Alaska**. In terms of economic impact, the Port generates more than **\$750 million each year** or more than **four million tons of materials** move across its docks each year, which equates to nearly **five tons of goods for every man, woman, and child** in Alaska. Anchorage is served twice weekly by two major carriers which originate in Tacoma, Totem Ocean Trailer Express (TOTE) and Horizon Lines. The Port is currently undergoing a **multi-million dollar upgrade and expansion** to their facilities that will allow the Port to keep pace with the future trends in the shipping industry and to better serve its existing clients.

\$750 million worth of materials come through the Port each year

INTERNATIONAL AIRPORT (ANC)

The Ted Stevens Anchorage International Airport is part of the Alaska International Airports System, which includes the Fairbanks International Airport. ANC is strategically located **9.5 hours from 90% of the Industrial World**. This unique location enables Asia to North America cargo carriers to significantly increase cargo volume and revenue by refueling in Anchorage. Also, federal law offers flexibility to exchange cargo between carriers through cargo transfer rules unique to Alaska and Hawaii. ANC has recently completed a **remodel of the South Terminal** and is nearing completion of an upgrade of the airfield to accommodate super jumbo aircraft such as the Airbus A380 and Boeing 747-8. ANC is located approximately three miles southwest of downtown Anchorage. Comprising approximately **4,680 acres**.

ANC QUICK FACTS:

- **600** wide body landings per week
- **522,000** annual flight operations
- **#2** in the Western Hemisphere for landed weight of cargo aircraft
- **#5** in the world for cargo throughput
- **5 million** passengers annually
- Capacity: **3 ILS Runways** 10,500' or longer



Image: ANC, Nerland Agency

UTILITIES

TELEPHONE SERVICE:

Service Provider: Regulated
Local Service Providers: GCI, Matanuska Telephone Association (MTA)
Fiber Optics: in use but don't extend to the home in Anchorage, fiber optics are available in Eagle River and Eagle Crossing
High Capacity Digital: Available

CABLE SERVICE: GCI and MTA

ELECTRICAL SERVICE:

Service Provider: Regulated
Distributor: Municipal Light and Power, Chugach Electric Association

NATURAL GAS SERVICE:

Distributor: ENSTAR Natural Gas Company

WATER SERVICE:

Service Provider: Anchorage Water and Wastewater
Source: Eklutna Lake, Ship Creek, 17 deep underground water wells
Size of Mains: 1-72 inches
System Looped: Yes
Max. System Cap: Eklutna Water Treatment Facility 35 mgd; Ship Creek Water Treatment Facility 12 mgd; 17 Wells production varies = Total 47+ mgd
Gallons of Water Produced Annually: 9.238 billion
Ave. Daily Use: 25mgd
Max. Daily Use: 58mgd
Pressure on Mains: 20-220 psi for all pipes (40-130 psi for pipe serving customers)
Storage Capacity: 51 million gallons

UTILITIES Continued...

WASTE WATER SERVICE:

Service Provider: Anchorage Water and Wastewater

Treatment Plant Type: Primary: Asplund, Secondary: Eagle River

Ave. Daily Use: 29.86 mgd (Asplund: 28 mgd; Eagle River: 1.44 mgd; Girdwood: 0.42 mgd)

Max. Daily Use: Peak Day in 2009 – 50.32 mgd (Eagle River: 3.27 mgd; Asplund: 45.3 mgd; Girdwood: 1.75 mgd)

Gallons of wastewater treated annually: 10.970 billion

Max. System Capacity: 61.35 mgd average daily flow (Asplund: 58 mgd; Eagle River: 2.5 mgd; Girdwood: 0.85 mgd)

Size of Pipes: Foremain (2-48 inches); Gravity Main (4-120 inches)

GARBAGE SERVICE:

Service Provider: Solid Waste Services (Municipal Entity), Alaska Waste (Private Company)

TAXATION

SALES & INCOME TAX 2011

Municipal - None

State - None

PROPERTY TAX

(Avg per \$100,000 of assessed value-2010)

Municipal - 0.45

School District - 7.44

REGULATORY COST CHARGE RATES FOR REGULATED UTILITIES & PIPELINE CARRIERS (FY2011)

Electric	\$0.000552 per kwt/hr
Gas	0.345%*
Water/Wastewater	1.372%*
Refuse	0.866%*
Local Exchange Telephone	1.413%*
Interexchange Telephone	2.239%*
Cable	1.676%*
Pipeline	0.637%*
Steam Heat	0.049%*

*of adjusted gross regulated revenue

UNEMPLOYMENT TAX RATE ON TAXABLE WAGES (2011)

Total Amount - 3.4%

Employer Contribution - 2.82%

Employee Contribution - 0.58%*

(Taxable wage is \$34,600 per employee)

REAL PROPERTY TAXABLE VALUE (Municipality of Anchorage) in 2010

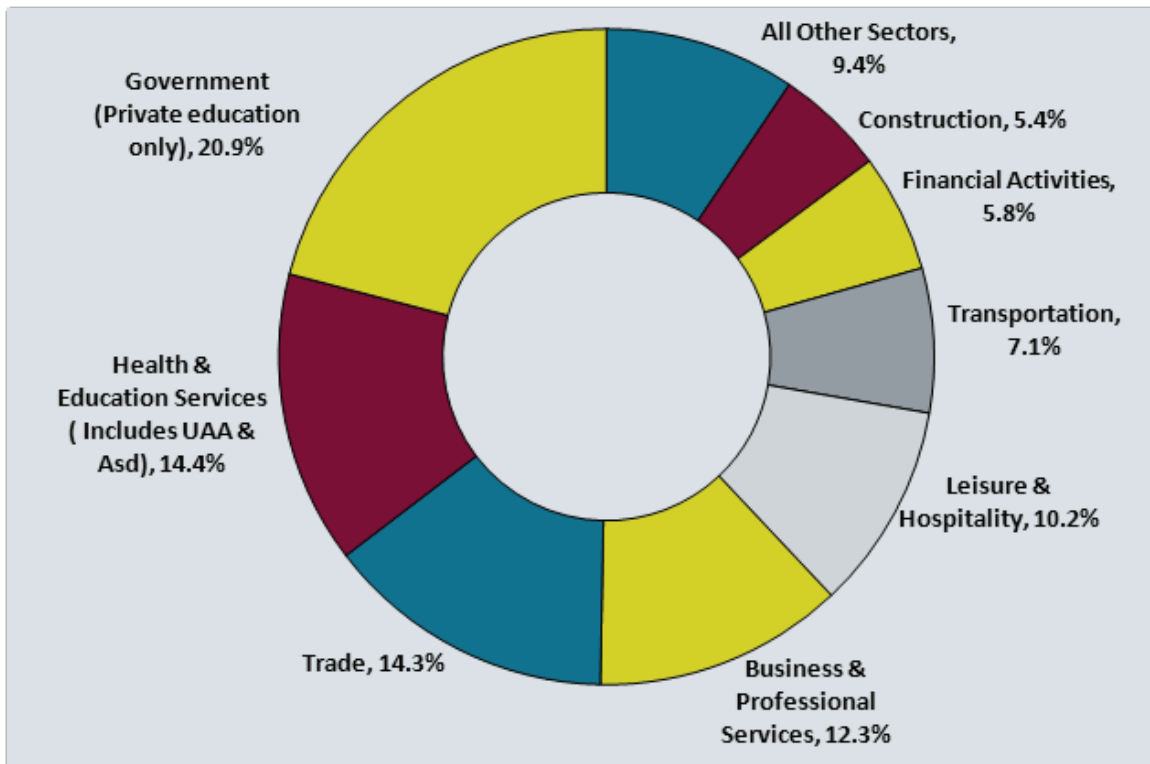
\$31,455,772,186

**Anchorage has
NO SALES TAX
or STATE
INCOME TAX.**

WORK

BUSINESS INFORMATION

Employment Composition (2010)



WAGES

Wages in Anchorage are higher than in most places in the United States. The higher income level is an adjustment to the higher cost of living standards in Alaska.

\$24.95 Avg. wage Construction Laborer

\$36.78 Avg. wage NURSE

\$20.04 Avg. wage Medical Tech

\$42.11 Avg. wage Civil Engineer

OCCUPATION	AVG. WAGE
Maids/Housekeeper	\$11.85
Packers, Packages & Hands	\$11.92
Retail Sales Person	\$12.31
Production Assemblers, Fabricators, all others	\$13.73
Medical Technicians	\$20.04
Maintenance & Repair	\$21.67
Computer Support Spec.	\$22.65
Truck Drivers, Heavy & Tractor Trailer	\$23.30
Construction Laborers	\$24.95
Electricians	\$33.18
Nurses	\$36.78

MAJOR EMPLOYERS HEADQUARTERED IN ANCHORAGE (2010)

Monthly Employment in 2009	Firms Name	Business Activity
4,000+	Providence Health & Services	Hospital/medical center
3,000 - 3,249	Wal-Mart/Sam's Club	Grocery/general merchandise
2,750 - 2,999	Carrs/Safeway	Grocery
2,500 - 2,749	Fred Meyer	Grocery/general merchandise
2,250 - 2,499	ASRC Energy Services	Oilfield services
1,750 to 1,999	BP Exploration Alaska	Oil and gas extraction
	NANA Management Services	Catering/lodging/security
	CH2M HILL	Oilfield services
1,500 - 1,749	Alaska Airlines	Air carrier
	Alaska Native Tribal Health Consortium ³	Hospital/medical center
1,250 - 1,499	GCI Communications	Communications
	South Central Foundation ⁴	Hospital/medical center
1,000 - 1,249	FedEx	Airfreight/courier service
	ConocoPhillips	Oil and gas extraction
	Alaska USA Federal Credit Union	Financial services
750 - 999	UPS	Airfreight/courier service
	Wells Fargo	Financial services
	Doyon Universal Services	Catering/security
	The Alaska Club	Health club
	McDonald's Restaurants of Alaska	Eating establishment
	Alaska Regional Hospital	Hospital/medical center
	Home Depot	Building products
	Alaska Communications	Communications
	Alyeska Pipeline Service Company	Transportation

EMPLOYMENT FOR MUNICIPALITY OF ANCHORAGE

YEAR	LABOR FORCE	UNEMPLOYMENT RATE
2010	156,759	6.9%
2005	148,927	5.5%
2000	140,456	4.9%

Economic Development Incentives

Corporate Income Tax

Corporations are taxed only on the portion of their net taxable income allocated and apportioned to the state. The state imposes **no inventory tax, no gross receipts tax, no state sales tax, and no personal income tax.**

Sales & Use Taxes

The state of Alaska levies **neither a sales nor a use tax on businesses.** Boroughs and cities may impose a sales and use tax of up to 7 percent on sales, rents, and services, and on use, storage, or consumption of tangible property within the city or borough limits. The City of Anchorage levies neither a sales nor a use tax on businesses.

Property Tax

The state imposes **no property tax.** Real property is subject to taxation by cities and boroughs. A separate annual tax of 20 mills is levied statewide on the true and full value of property used in unrefined gas and oil exploration, production, or pipeline transportation.

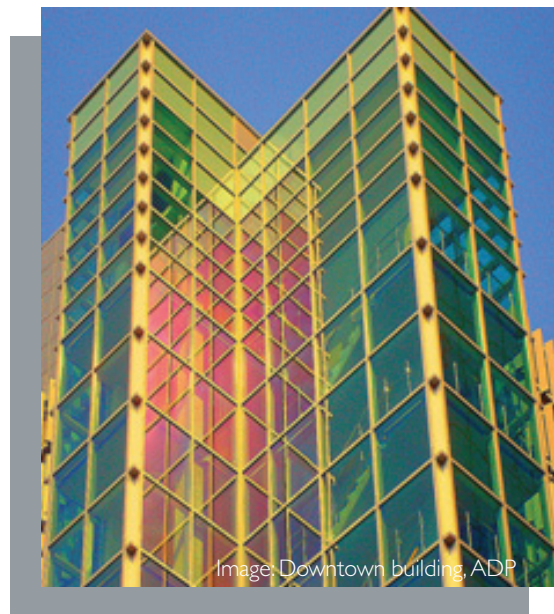
Film Incentive Program

On June 4, 2008 Governor Sarah Palin signed SB230 into law, creating the Alaska Film Office. The initiative provides a **transferable tax credit** for qualified film production expenditures as an incentive to attract large scale film production in Alaska.

The state imposes no inventory tax, no gross receipts tax, no state sales tax, & no personal income tax.

Mining/Exploration Credits

The Alaska Exploration Incentives Act allows **deduction of up to \$20 million of qualified costs** — including personnel, transportation, fuel, camp, communications, geochemical, geophysical, and contractual for new mines. The exploration credits are site specific and may be assigned to successors in permit. The law provides **100 percent credit** for eligible exploration costs against future mining license tax, corporate tax, and royalties on production. Credits are limited to no more than 50 percent of the taxes or royalties due the state in any given year and must be taken within 15 years of beginning production. To facilitate record keeping, the credits must be certified annually, with all submitted relevant data kept confidential for three years.



Economic Development Property

Partially or totally exempt on all or some types of economic development property from real and personal property taxation under this code for up to five years. A renewal of exemption can be granted. This does not apply to inventories.

Qualified Inventory

- Qualified inventory shall be exempt from taxation.
- Deteriorated property shall be partially or totally exempt from taxation for up to ten years starting in the year beginning January 1 after: An exemption may be transferred, in whole only, to another entity or owner after substantial completion or beneficial occupancy.
- Deteriorated property may, by ordinance, be permitted to defer payment of taxes on all or some types of deteriorated property for up to five years beginning on or any time after the day substantial rehabilitation, renovation, demolition, removal or replacement of any structure on the property begins.
- Only one exemption and only one deferral may be granted to the same property.
- An application for deteriorated property tax relief may be submitted and approved prior to the commencement of rehabilitation work.

BUSINESS & INDUSTRIAL PARKS

ANCHORAGE

Anchorage Business Park
15 acres

Airport Business Park
4.4 acres

EAGLE RIVER

Birchwood Industrial Park
155 acres
with rail spur access



Image: Downtown Anchorage, ADP

PLAY

RECREATION & AREA ATTRACTIONS

Outdoor enthusiasts have a variety of opportunities to **climb, hike, kayak, and fish in the Anchorage area**. The city sits at the base of the **Chugach National Forest**, the **second largest national forest in the U.S.** covering **5.3 million acres** of land, extending south and east of Anchorage along the South central Alaskan coast. It encompasses most of the Prince William Sound area and the **700,000-acre Copper River Delta**, which is the **largest contiguous wetland area remaining on the western coast of the U.S.**

ANCHORAGE HAS:

- Zoo
- Botanical Gardens
- **8** Museums including the **Anchorage Museum**, the largest museum in Alaska, the **Alaska Native Heritage Center**, and the **Alaska Aviation Museum**
- **20** Health centers
- **3** Golf courses
- **7** Movie theaters
- **Indoor water park**
- **3** Ski hills including **one world class ski resort**
- **Hundreds of local restaurants** featuring cuisine from around the world
- **Thousands of Bed & Breakfast** and Hotel/Motel rooms available year round

MUNICIPALITY OF ANCHORAGE HAS:

10,946
acres of municipal parkland

223
parks

82
playgrounds

250
miles of trails & greenbelts linking neighborhoods with surrounding natural open spaces and wildlife habitat

135
miles of paved trails

110
athletic fields

5
pools

11
recreation facilities

ARTS

Anchorage has a **rich arts culture** and **community** that supports all mediums from visual art to performing art. Anchorage has its own opera company, supports multiple local theatre houses, has many art galleries throughout the city, supports its own Symphony and brings in live performances from all over the world for local audiences to enjoy year around.

**ART GALLERIES
OPERA
THEATER
SYMPHONY
MUSEUMS**

Anchorage is one of the only metropolitan areas where you can go to work, see a Broadway show and fish for world class King Salmon all within a 5 minute walk from downtown Anchorage.

Communications/Media

- 1** daily newspaper (Anchorage Daily News)
- 2** weekly newspapers
- 8** local radio stations & 1 college station
- 2** local television stations
- 2** local cable providers
- National Public Radio & Public Television



Image:
Anchorage Museum

Works Cited

- Alaska Native Medical Center . (n.d.). ANMC:: Services. Retrieved February 23, 2011, from Alaska Native Medical Center Website: <http://www.anthc.org/anmc/services/index.cfm>
- Alaska Pacific University . (n.d.). About APU. Retrieved 2011 14, February, from Alaska Pacific University Website: <http://www.alaskapacific.edu/AboutAPU/Pages/Default.aspx>
- Alaska Railroad Corporation. (n.d.). Alaska Railroad Corporation Fact Sheet. Retrieved February 11, 2011, from Alaska Railroad Corporation Website: <http://www.alaskarailroad.com/corporate/AboutARRC/FactSheet/tabid/452/Default.aspx>
- Alaska Regional Hospital. (n.d.). Our History. Retrieved February 23, 2011, from Alaska Regional Hospital: <http://www.alaskaregional.com/CustomPage.asp?guidCustomContentID=09548006-BC70-4124-8FE9-18E6B507E40B>
- Anchorage Convention & Visitors Bureau. (2011). Anchorage Climate and Daylight Hours - Monthly Averages. Retrieved January 15, 2011, from Anchorage Convention & Visitors Bureau Website: <http://www.anchorage.net/684.cfm>
- Anchorage School District. (n.d.). About the Anchorage School District. Retrieved January 20, 2011, from ADS Online: Anchorage School District: <http://www.asdk12.org/aboutasd/>
- Department of Labor and Workforce Development Research & Analysis Section. (n.d.). Current Employment Statistics (CES). Retrieved February 16, 2011, from Department of Labor and Workforce Development Research & Analysis Website: <http://labor.alaska.gov/research/ces/ces.htm>
- Department of Labor and Workforce Development Research & Analysis Section. (n.d.). Current Population Estimates. Retrieved February 14, 2011, from Department of Labor and Workforce Development Research & Analysis Website: <http://labor.alaska.gov/research/pop/popest.htm>
- Department of Labor and Workforce Development Research & Analysis Section. (n.d.). Unemployment Rates. Retrieved February 3, 2011, from Department of Labor and Workforce Development Research & Analysis Website: <http://labor.alaska.gov/research/labforce/labforce.htm>
- Department of Labor and Workforce Development Research & Analysis Section. (n.d.). Wages for Anchorage/Mat-Su. Retrieved February 16, 2011, from Department of Labor and Workforce Development Research & Analysis Website: <http://labor.alaska.gov/research/wage/anchoes.htm>
- Frasca, C. (2011, March 2). Series of e-mailed questions. (A. Culhane, Interviewer)
- Fried, N. (2010, July). Alaska's 100 Largest Private Sector Employers in 2009. *Alaska Economic Trends* , pp. 6-7.
- Fried, N. (2010, August). Cost of Living in Alaska. *Alaska Economic Trends* , p. 6.
- Glacier Valley Transit. (n.d.). About Glacier Valley Transit. Retrieved February 11, 2011, from Glacier Valley Transit Website: <http://www.glaciervalleytransit.com/>
- Hour, A. D. (2011, March 3). A phone call about unemployment tax rate. (A. Culhane, Interviewer)
- Mat-Su Transit. (n.d.). ABOUT MASCOT . Retrieved February 11, 2011, from Mat-Su Transit Website: http://www.mat-sutransit.com/about_us.html
- Municipality of Anchorage. (n.d.). About AFD. Retrieved January 15, 2011, from Municipality of Anchorage Fire Department: <http://www.muni.org/Departments/Fire/Pages/AboutAFD.aspx>

Municipality of Anchorage. (n.d.). Business Assistance & Incentives . Retrieved February 25, 2011, from Anchorage Economic Development Corporation Website: <http://www.aedcweb.com/about-anchorage/work/389-financing-taxes-a-incentives.html>

Municipality of Anchorage. (n.d.). Demographics. Retrieved February 16, 2011, from Municipality of Anchorage Website: <http://www.muni.org/FastFacts/Pages/Demographics.aspx>

Municipality of Anchorage. (n.d.). Parks and Recreation. Retrieved February 7, 2011, from Municipality of Anchorage Website: <http://www.muni.org/departments/parks/pages/default.aspx>

Municipality of Anchorage. (n.d.). People Mover. Retrieved February 11, 2011, from Municipality of Anchorage Public Transportation: <http://www.muni.org/departments/transit/pages/default.aspx>

Municipality of Anchorage. (n.d.). Police Department - History. Retrieved January 15, 2011, from Municipality of Anchorage Police Department: <http://www.muni.org/Departments/police/Pages/History.aspx>

Parrott, J. (2010). 2010 Alaska International Air Cargo Summit. Retrieved February 10, 2011, from Ted Stevens Anchorage International Airport: <http://dot.state.ak.us/anc/about/cargoSummit2010.shtml>

Pearce, G. (2011, March 2). Series of E-mailed Questions. (A. Culhane, Interviewer)

Port of Anchorage. (n.d.). Overview. Retrieved February 10, 2011, from The Port of Anchorage Intermodal Expansion Project: https://portofanchorage.org/ov_project.html

Providence Health & Services. (n.d.). Our History in Alaska. Retrieved March 1, 2011, from Providence Alaska Medical Center Website: <http://www.providence.org/alaska/pamc/>

Regulatory Commission of Alaska. (n.d.). Regulatory Commission of Alaska- Order: 10-0296 . Retrieved March 3, 2011, from Regulatory Commission of Alaska Website: <http://rca.alaska.gov/RCAWeb/ViewFile.aspx?id=3ee022ec-ac95-48ed-b0af-ca49d6ba2f40>

Shane, J. (2010). 2010 Alaska International Air Cargo Summit. Retrieved February 10, 2011, from Ted Stevens Anchorage International Airport: <http://dot.state.ak.us/anc/about/cargoSummit2010.shtml>

Stephens, C. (2011, March 2). A series of e-mail questions. (A. Culhane, Interviewer)

Ted Stevens Anchorage International Airport. (n.d.). ANC Kulis ANGB. Retrieved February 10, 2011, from Ted Stevens Anchorage International Airport: <http://dot.state.ak.us/anc/about/Kulis.shtml>

University of Alaska Anchorage. (2010). About UAA. Retrieved February 8, 2011, from University of Alaska Anchorage: <http://www.uaa.alaska.edu/aboutuaa/index.cfm>

US Census Bureau. (n.d.). Municipality of Anchorage, Alaska - Fact Sheet - American Fact Finder. Retrieved February 16, 2011, from U.S. Census Bureau: http://factfinder.census.gov/servlet/ACSSAFF?_event=ChangeGeoContext&geo_id=05000US02020&_geoContext=01000US%7C04000US02&_street=&_county=Anchorage&_cityTown=Anchorage&_state=04000US02&_zip=&_lang=en&_sse=on&ActiveGeoDiv=geoSelect&_useEV=&pctxt=fph&p

Valley Mover. (n.d.). Valley Mover - Valley Mover. Retrieved February 11, 2011, from Valley Mover Website: <http://www.valleymover.org/>

Wayland Baptist University . (n.d.). Colleges in Anchorage - Christian Colleges - Wayland Baptist University . Retrieved February 15, 2011, from Wayland Baptist University : <http://www.wbu.edu/colleges-in-anchorage/>