



AEDC
Anchorage Economic
Development Corporation

August 2013 Employment Report Anchorage

Sponsored by:



First National Bank
A L A S K A
MEMBER FDIC

4.8%

August Unemployment
Rate for Anchorage

MONTHLY UNEMPLOYMENT

The unemployment rate for Anchorage in August was **4.8 percent**, down 0.1 percent from July. This is well below the national rate of 7.3 percent and the statewide rate of 5.7 percent. Since 1990, August's unemployment rate has averaged around 0.3 percent lower than the annual rate at the end of the year. Five of the last six month's rates have been less than five percent; there is a good chance that the 2013 annual rate may be as well. As always, it should be noted that these are preliminary survey figures for August and will be revised next month. Additionally, we expect to see further revisions in early 2014 upon more detailed analysis.

YEAR-TO-DATE UNEMPLOYMENT

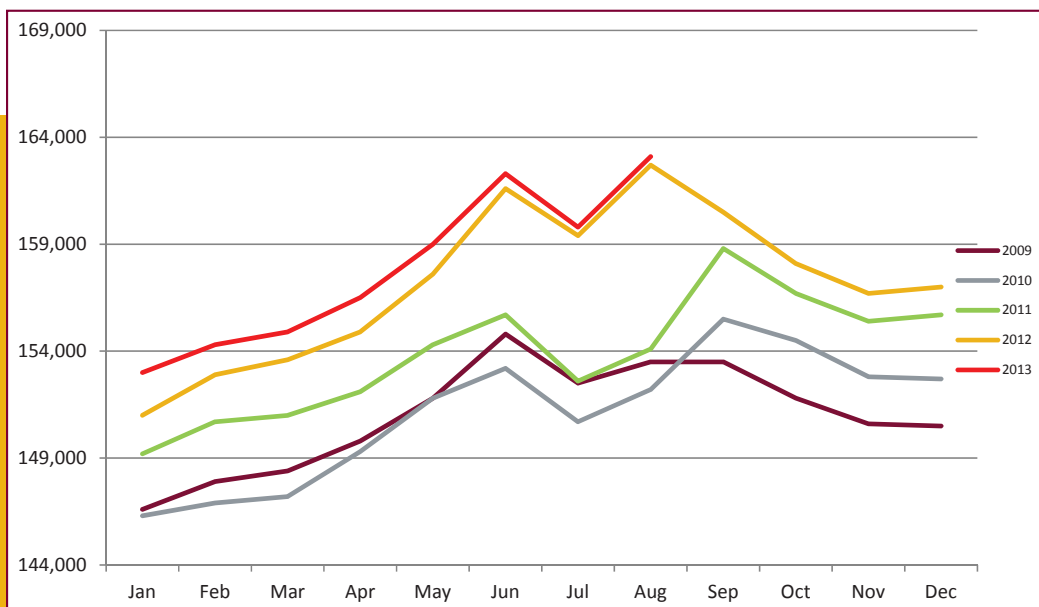
The average year-to-date (YTD) **non-seasonally adjusted unemployment rate in Anchorage was 5 percent** at the end of August, which is unchanged from July and 0.7 percent less than the 2012 YTD average. An increase of 193 in the employment total and a decrease of 968 in the Anchorage labor force during the YTD period has resulted in a reduction of 1,194 people in the reported unemployment total. **The total number of unemployed people in Anchorage is estimated at 7,324 (those actively looking for jobs)**, 760 less than August 2012. In the Mat-Su and Kenai Peninsula Boroughs, the monthly unemployment rate has decreased 14 and 15 percent, respectively, from 2012 YTD (see the charts at the end of this report for more details).

It is important to note that these Anchorage unemployment numbers represent the labor force residing in the Municipality of Anchorage, and do not include jobs in Anchorage held by residents from outside the Municipality. The industry employment estimates referenced in the remainder of this report are representative of all jobs in the Municipality of Anchorage, regardless of the job holder's place of residency.

ANCHORAGE INDUSTRY EMPLOYMENT ESTIMATES

As for Anchorage industry employment estimates, **the YTD average is continuing to show improvement over 2012 with a total net increase of 1,150 jobs** so far. The private sector (total jobs minus government jobs) has grown by more than 1,950 jobs during this time, equaling a growth rate of 1.6 percent. **Government employment has declined by 800 jobs** so far, with losses evenly split between federal and local governments.

Industries showing **the largest YTD growth rates are mainly in the goods producing category**, which includes oil & gas, manufacturing and construction. Of service providing industries, educational & health services is leading the way with a 3.14 percent YTD growth rate. Six of the ten major sector's August 2013 averages are at or above the YTD monthly average, indicating that the job gains are likely to remain through the year.



ANCHORAGE EMPLOYMENT
Municipality of Anchorage
2009-Present

MONTHLY REVISIONS

Each month, the Alaska Department of Labor's Research and Analysis Division revises the previous month employment numbers based on the availability of newer or late arriving data. The following tables show the changes in Anchorage's and Alaska's June job totals by industry.

Most adjustments are relatively minor, however, some changes do occur which are significant. Changes such as these are normally the result of rounding errors, job classification modifications, sample size or modeling issues, or errors within the industry.

JULY 2013 REVISIONS, ANCHORAGE

Industry	Preliminary Total	Revised Total	Net Change
Total Nonfarm	159,700	159,800	+100
Services Providing	143,200	143,300	+100
Trade, Transportation, Utilities	33,900	34,000	+100
Retail Trade	17,300	17,200	-100
Information	3,800	3,700	-100
Financial Activities	8,700	8,600	-100
Health Care	18,600	18,500	-100
Accommodation	3,400	3,600	+200
Food Service & Drinking Places	12,100	12,000	-100
Other Services	5,900	6,000	+100
Local Education	4,300	4,400	+100

JULY 2013 REVISIONS, ALASKA

Industry	Preliminary Total	Revised Total	Net Change
Total Nonfarm	356,500	356,800	+300
Goods Producing	59,900	60,300	+400
Services Providing	296,600	296,500	-100
Mining and Logging	18,600	18,700	+100
Manufacturing	20,600	20,900	+300
Seafood Processing	16,400	16,700	+300
Trade, Transportation, Utilities	69,200	69,500	+300
Retail Trade	38,100	38,200	+100
Food and Beverage Stores	6,500	6,400	-100
General Merchandise Stores	10,100	10,300	+200
Trans/Warehouse/Utilities	24,800	25,000	+200
Information	6,200	6,100	-100
Telecommunications	4,100	4,000	-100
Professional Business Services	29,700	29,500	-200
Educational & Health Services	47,100	47,000	-100
Leisure & Hospitality	40,400	40,300	-100
Accommodation	11,500	11,300	-200
Food Service & Drinking Places	23,000	23,100	+100
Other Services	12,100	12,200	+100

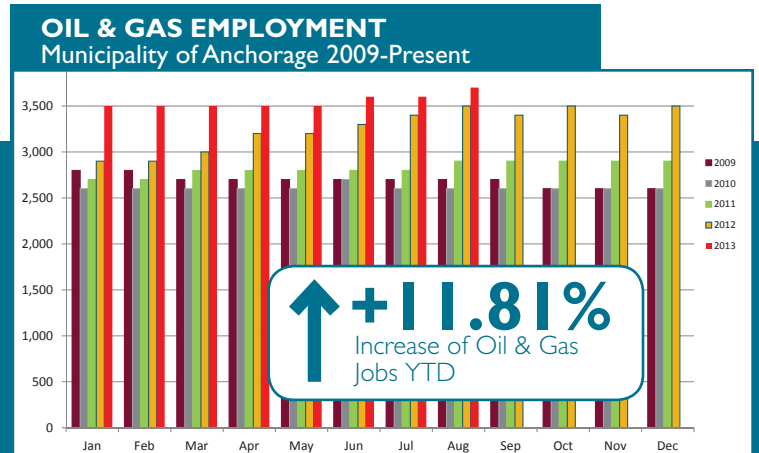
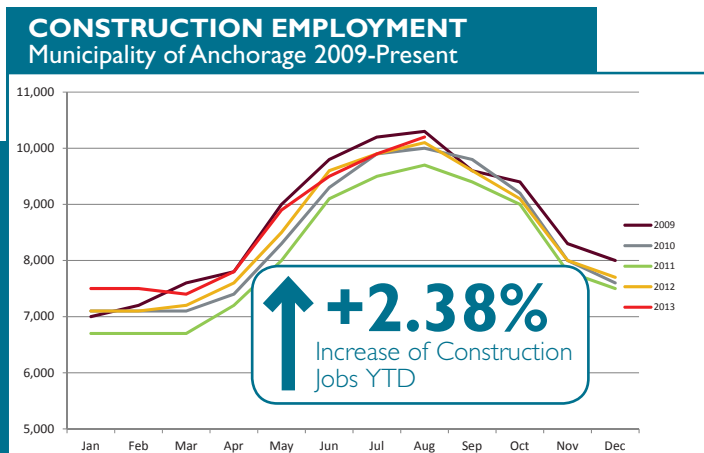
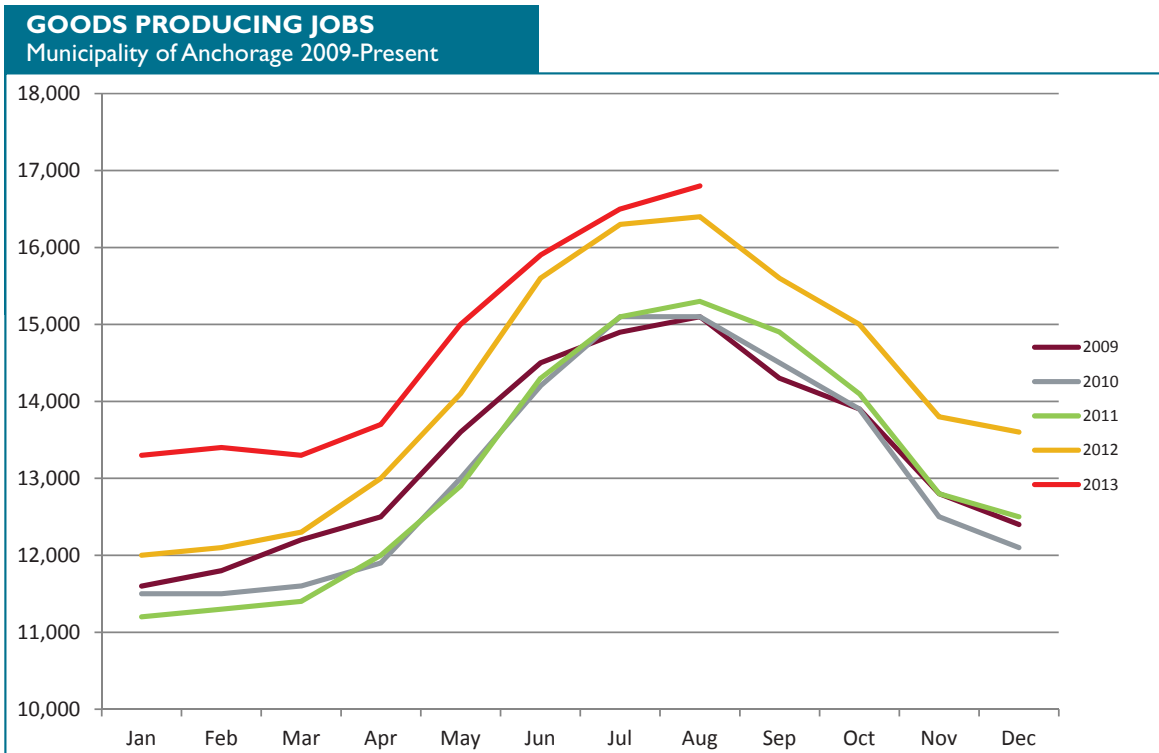
GOODS PRODUCING JOBS

CONSTRUCTION WORK, MINING, OIL & GAS PRODUCTION, MANUFACTURING

Goods producing jobs (those jobs that are specifically tied to production, not those which support the production or maintenance of the production jobs) are maintaining the growth seen all year, averaging **763 more jobs in 2013 YTD over the same period in 2012.**

The oil & gas sector is leading the way with 375 more jobs than last year at this point; a growth rate of nearly 12 percent. Positive signs in the industry includes Eni's expansion of operations at their Nikaitchuq unit, Cook Inlet Energy's announcement of \$20 million in new financing, and increasing interest in LNG exportation to the Far East.

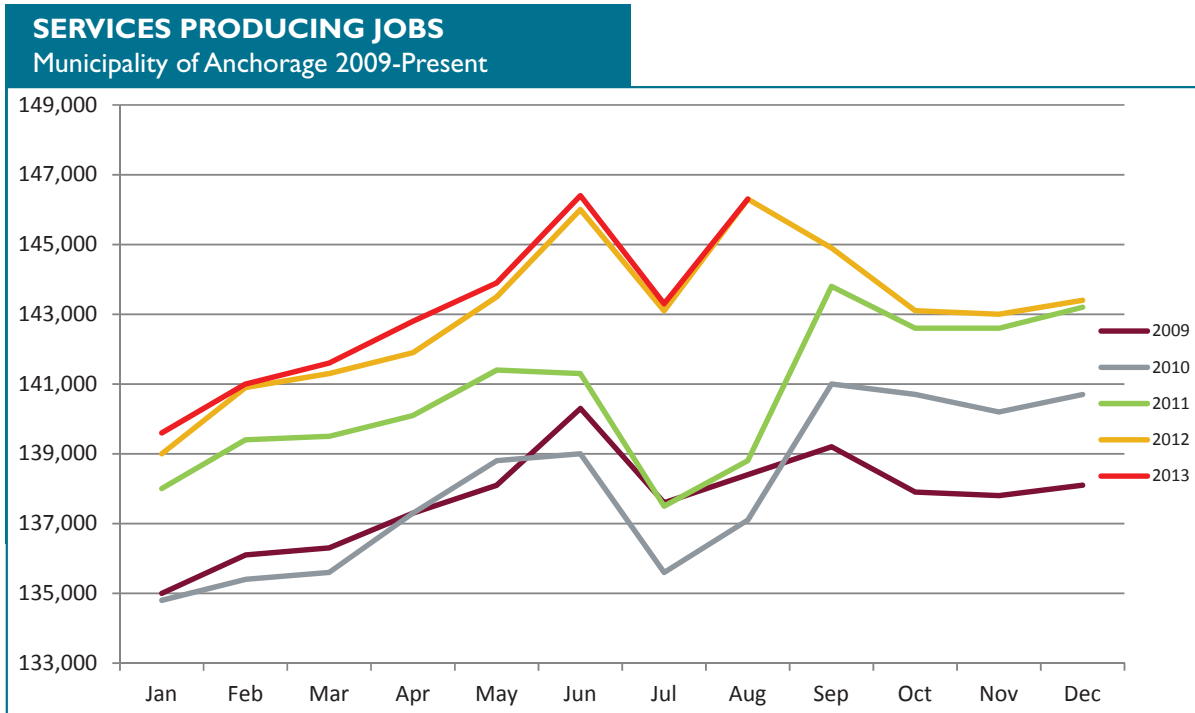
The construction industry is also seeing higher job numbers in August, averaging 200 more jobs over 2012 YTD. The August total broke 10,000 for the first time this year, and matches the highest monthly total since August of 2009. Municipal building permit valuations remain very high and are up more than 35 percent YTD from last year, indicating that the strong start to the construction season continued through the summer. One significant permit applied for in August was for renovations at Orthopedic Physicians Anchorage (\$4 million).



SERVICES PRODUCING JOBS

ENGINEERING, RETAIL, TOURISM, HEALTH CARE, ETC.

Services producing jobs in Anchorage totaled **146,300** for August. Overall, the YTD average is up 363 jobs from 2012 YTD. The educational and health services sector's growth rate is 3.05 percent so far this year, making it the highest growth sector in the service industry. Jobs in the leisure and hospitality sector are growing at more than twice the rate of the overall totals at 1.77 percent. Both accommodation and food service sectors are seeing growth, indicating a positive trend in the tourism industry. Federal and local government sectors are both averaging less than this point last year (both 450 less jobs), but the state government jobs average is up 88 jobs YTD from 2012.



SERVICES PRODUCING JOBS



Increase of Services Producing Jobs YTD

360

143,110

Services Producing Jobs in Anchorage for August 2013 (total)

AUGUST 12 vs. AUGUST 13
YEAR TO DATE

Educational & Health Services

+750

Professional & Business Services

+425

Information

-140

Leisure & Hospitality

+300

Retail

flat

Government

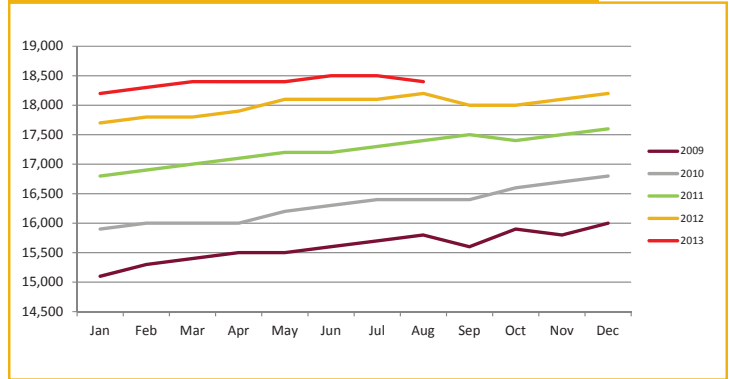
-800

••••• SERVICES PRODUCING JOBS SUMMARY

HEALTH CARE EMPLOYMENT

The health care industry is still going strong, with **425 MORE JOBS** over 2012 YTD. The 2.37 percent YTD job growth in the local health care sector is below the 2012 end of year rate, but is still one of the fastest growing service producing industries. Monthly averages have held between 18,200 and 18,500 throughout the year. If this trend continues through 2013, the sector will beat AEDC's January projection of 400 additional health care jobs. Health care has been identified by the state Department of Labor as the industry with the highest growth potential in Alaska for the next decade.

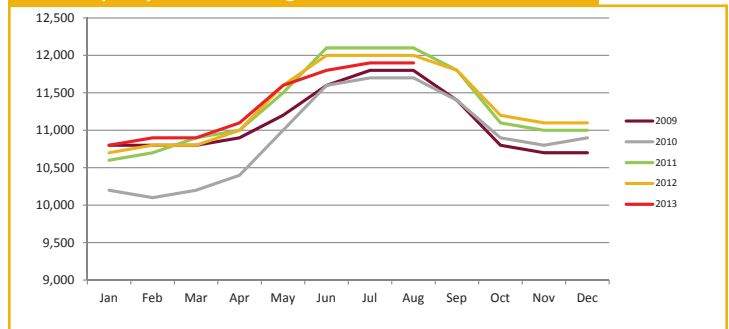
HEALTH CARE EMPLOYMENT
Municipality of Anchorage 2009-Present



TRANSPORTATION

August's estimate of 11,900 jobs is below 2012 by 100 jobs, but the YTD average is unchanged. Despite decreasing amounts of cargo transiting through the Ted Stevens Anchorage International Airport, the Air Transportation segment of the industry has added 38 jobs YTD. Unfortunately, this sector is unlikely to reach AEDC's January estimate of an additional 100 jobs by the end of the year.

TRANSPORTATION EMPLOYMENT
Municipality of Anchorage 2009-Present



PROFESSIONAL & BUSINESS SERVICES

ENGINEERING, ARCHITECTURE, LEGAL SERVICES, ACCOUNTING, SCIENTIFIC RESEARCH, WASTE MANAGEMENT & ADMINISTRATIVE SERVICES

The YTD average is up 425 jobs from 2012 and the rate of increase is one of the largest of all service providing industries at 2.14 percent.

Job growth within this industry is often tied to growth in other industries such as oil & gas, construction and transportation. As these goods producing industries continue to grow, more positions in professional and business services are expected.

PROFESSIONAL & BUSINESS SERVICES EMPLOYMENT
Municipality of Anchorage 2009-Present

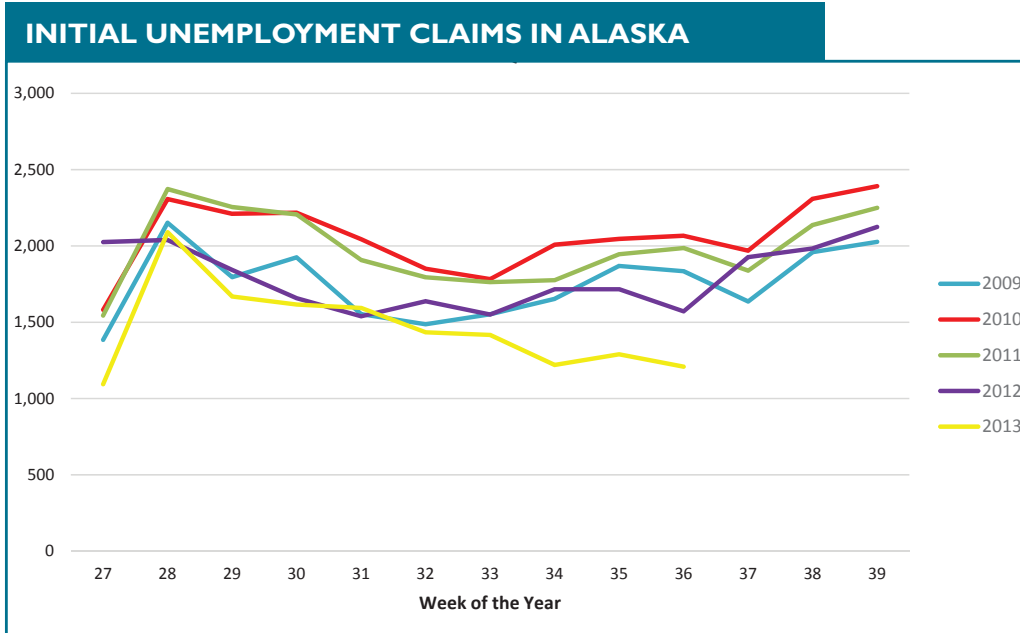


↑ Increase of Professional & Business Services Jobs
425
YTD

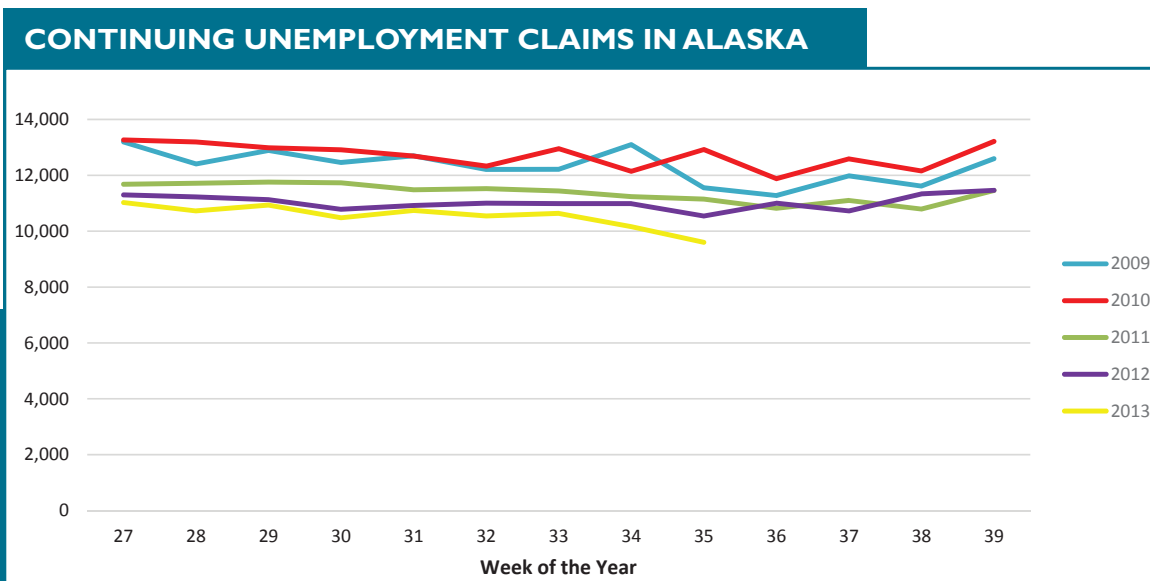
↑ **2.14%**
Increase of Professional & Business Services Jobs
YTD

UNEMPLOYMENT CLAIMS

Initial unemployment claim applications can be interpreted as a proxy for layoffs. They tend to fall as job growth accelerates. The totals for the last two weeks of August were the lowest seen since the fall of 2008. This time period is generally the low point of the year, and initial claims are expected to rise slowly over the next two months.



Continuing claims figures helps to show how well unemployed workers are re-entering the workforce. This total does not include workers receiving extended benefits from the federal government. The third quarter numbers are still tracking below the previous four years and have gone below 10,000 for the first time since November of 2008. Continuing claims are likely to stay close to this level for the next four to five weeks before the annual upward movement in mid-September.



All data referenced in this employment report is from the State of Alaska, Dept. of Labor & Workforce Development website: www.laborstats.alaska.gov

Report compiled by Anchorage Economic Development Corp. Research Department.

If you are interested in learning more about this data or are interested in how AEDC can help you develop a report, call AEDC at 907.258.3700.

AEDC, 510 L Street, Suite 603, Anchorage, AK 99501



UNEMPLOYMENT ANALYSIS (YTD, 2013)

Anchorage, Mat-Su, Kenai Peninsula Borough

	Jan	Feb	Mar	Apr	May	Jun	Jul	Aug	Sep	Oct	Nov	Dec	13 YTD Avg	12 YTD Avg	13 vs 12
Municipality of Anchorage	revised	revised	revised	revised	revised	revised	revised	preliminary							
Labor Force	157,275	156,926	155,566	155,408	154,851	156,405	155,259	153,164					155,607	156,574	(968)
Employment	148,567	148,914	147,987	147,673	147,596	148,134	147,659	145,840					147,796	147,603	193
Unemployment	8,708	8,012	7,579	7,467	7,255	8,271	7,600	7,324					7,777	8,971	(1,194)
Unemployment Rate	5.5%	5.1%	4.9%	4.8%	4.7%	5.3%	4.9%	4.8%					5.0%	5.7%	-0.7%
Mat-Su Borough															
Labor Force	44,213	44,004	43,489	43,078	42,772	43,262	42,887	42,117					43,228	43,761	(533)
Employment	40,288	40,382	40,130	40,045	40,024	40,170	40,041	39,548					40,079	40,026	53
Unemployment	3,925	3,622	3,359	3,033	2,748	3,092	2,846	2,569					3,149	3,735	(586)
Unemployment Rate	8.9%	8.2%	7.7%	7.0%	6.4%	7.1%	6.6%	6.1%					7.3%	8.5%	-1.2%
Kenai Peninsula Borough															
Labor Force	26,413	26,491	26,735	26,919	27,912	29,309	29,729	29,235					27,843	27,923	(80)
Employment	23,879	24,123	24,546	24,928	26,072	27,284	27,911	27,465					25,776	25,497	279
Unemployment	2,534	2,368	2,189	1,991	1,840	2,025	1,818	1,770					2,067	2,426	(359)
Unemployment Rate	9.6%	8.9%	8.2%	7.4%	6.6%	6.9%	6.1%	6.1%					7.4%	8.7%	-1.3%
Southcentral Region															
Labor Force	227,901	227,421	225,790	225,405	225,535	228,976	227,875	224,516					226,677	228,258	(1,581)
Employment	212,734	213,419	212,663	212,646	213,692	215,588	215,611	212,853					213,651	213,126	525
Unemployment	15,167	14,002	13,127	12,491	11,843	13,388	12,264	11,663					12,993	15,132	(2,139)
Unemployment Rate	6.7%	6.2%	5.8%	5.5%	5.3%	5.8%	5.4%	5.2%					5.7%	6.6%	-0.9%
State of Alaska															
Labor Force	361,085	362,187	360,100	359,422	363,918	371,481	373,528	369,287					365,126	367,205	(2,079)
Employment	333,414	336,610	336,463	336,984	342,375	347,274	351,573	348,363					341,632	340,469	1,163
Unemployment	27,671	25,577	23,637	22,438	21,543	24,207	21,955	20,924					23,494	26,737	(3,243)
Unemployment Rate	7.7%	7.1%	6.6%	6.2%	5.9%	6.5%	5.9%	5.7%					6.4%	7.3%	-0.8%

***Note:** These numbers reflect employment, unemployment, etc. for only those people that are residence of the specified City/Region, thus are not inclusive of people who commute to another city for their jobs. (Ex: Someone lives in Wasilla but works in Anchorage. They would be counted in the Mat-Su Borough's labor force and employment numbers, not the Municipality of Anchorage numbers)

INDUSTRY EMPLOYMENT ESTIMATES 2013

Municipality of Anchorage

Industry	Jan	Feb	Mar	Apr	May	Jun	Jul	Aug	Sep	Oct	Nov	Dec	2013 YTD Avg.	2012 YTD Avg.	2013 vs 2012 YTD Change	% Change
	revised	revised	revised	revised	revised	revised	revised	preliminary								
Total Nonfarm	153,000	154,300	154,900	156,500	159,000	162,300	159,800	163,100					157,863	156,713	1,150	0.73%
Goods Producing	13,300	13,400	13,300	13,700	15,000	15,900	16,500	16,800					14,738	13,975	763	5.46%
Services Providing	139,600	141,000	141,600	142,800	143,900	146,400	143,300	146,300					143,113	142,750	363	0.25%
Mining and Logging ²	3,600	3,700	3,700	3,700	3,700	3,800	3,800	3,800					3,725	3,338	388	11.61%
Oil & Gas	3,500	3,500	3,500	3,500	3,500	3,600	3,600	3,700					3,550	3,175	375	11.81%
Construction	7,500	7,500	7,400	7,800	8,900	9,500	9,900	10,200					8,588	8,388	200	2.38%
Manufacturing	2,200	2,200	2,200	2,300	2,400	2,500	2,800	2,800					2,425	2,250	175	7.78%
Trade/Transportation/Utilities	32,000	31,900	31,900	32,300	33,200	33,800	34,000	33,900					32,875	32,913	-38	-0.11%
Wholesale Trade	4,300	4,300	4,400	4,400	4,600	4,700	4,800	4,800					4,538	4,550	-13	-0.27%
Retail Trade	16,900	16,700	16,600	16,800	17,100	17,300	17,200	17,200					16,975	16,988	-13	-0.07%
Trans/Warehouse/Utilities	10,800	10,900	10,900	11,100	11,600	11,800	11,900	11,900					11,363	11,363	0	0.00%
Air Transportation	2,900	2,900	2,900	2,900	3,000	3,100	3,100	3,100					2,988	2,950	38	1.27%
Information	3,800	3,800	3,800	3,800	3,800	3,800	3,700	3,700					3,775	3,913	-138	-3.51%
Financial Activities	7,900	8,000	8,000	8,100	8,200	8,500	8,600	8,400					8,213	8,213	0	0.00%
Professional & Business Svcs	19,500	19,700	19,600	19,900	20,200	21,100	21,200	21,300					20,313	19,888	425	2.14%
Educational & Health Services	24,900	25,100	25,300	25,500	25,600	25,500	25,300	25,300					25,313	24,563	750	3.05%
Health Care	18,200	18,300	18,400	18,400	18,400	18,500	18,500	18,400					18,388	17,963	425	2.37%
Leisure & Hospitality	16,100	16,400	16,800	16,900	17,400	18,000	18,100	18,200					17,238	16,938	300	1.77%
Accommodation	3,100	3,200	3,200	3,200	3,100	3,200	3,600	3,600					3,275	3,200	75	2.34%
Food Svcs & Drinking Places	10,800	11,000	11,200	11,500	11,800	12,200	12,000	12,000					11,563	11,375	188	1.65%
Other Services	5,600	5,600	5,700	5,600	5,700	5,800	6,000	6,100					5,763	5,788	-25	-0.43%
Government	29,800	30,600	30,500	30,800	29,900	30,000	26,300	29,500					29,675	30,475	-800	-2.63%
Federal Government	8,900	8,800	8,800	8,700	8,700	8,700	8,700	8,600					8,738	9,188	-450	-4.90%
State Government	10,200	11,000	11,000	11,100	10,400	10,400	10,400	10,500					10,625	10,538	88	0.83%
State Education	2,100	3,000	2,900	3,000	2,300	2,100	2,000	2,200					2,450	2,400	50	2.08%
Local Government	10,800	10,800	10,700	11,000	10,800	10,900	7,200	10,400					10,325	10,775	-450	-4.18%
Local Education	8,000	8,000	7,900	8,100	8,000	7,900	4,400	7,600					7,488	7,900	-413	-5.22%

- Nonfarm Wage & Salary excludes self-employed workers, fishers, domestics, and unpaid family workers.

- All totals are seasonally non-adjusted totals.

- Government includes employees of public school systems and the University of Alaska.

- Beginning January 2001, wage and salary employment estimates were published under a new classification system. The Standard Industrial Classification system (SIC) has been replaced by the North American Industry Classification System (NAICS). Data prior to 2001 are comparable only at the Total Nonfarm and Government levels.

^{1/} As of January 2001, certain federally-recognized tribal entities were moved to Local Government, which created a series break for Total Government and Local Government. [Please see the April 2002 Alaska Economic](#)

Trends publication for a detailed explanation.

^{2/} This category was called "Natural Resources and Mining" in previous years. The change is in name only; the industries it includes remain the same.

- Some totals may not equal components due to rounding.

- Source: Alaska Department of Labor and Workforce Development, Research and Analysis Section

* **Note:** The above numbers are representative of all people employed in the Municipality of Anchorage, this is inclusive of workers who claim residence outside of the Municipality of Anchorage. (Ex: someone who lives in the Mat-Su, but works in Anchorage would be included in these number)

Quick Comparisons

13 vs 12 August	400	0.25%
13 vs 12 1st Qtr	1,567	1.03%
13 vs 12 2nd Qtr	1,233	0.79%
13 vs 12 3rd Qtr	400	0.25%
13 vs 12 4th Qtr		

INDUSTRY EMPLOYMENT ESTIMATES 2013

State of Alaska

Industry	Jan	Feb	Mar	Apr	May	Jun	Jul	Aug	Sep	Oct	Nov	Dec	2013 YTD Avg.	2012 YTD Avg.	2013 vs 2012 YTD Change	% Change
	revised	revised	revised	revised	revised	revised	revised	preliminary								
Total Nonfarm	314,200	321,400	323,800	326,500	333,700	352,800	356,800	355,200					335,550	335,713	-163	-0.05%
Goods Producing	40,100	42,900	43,500	43,900	44,000	53,700	58,600	58,600					48,163	48,525	-363	-0.75%
Services Providing	274,100	278,500	280,300	282,600	289,700	299,100	296,500	296,600					287,175	287,188	-13	0.00%
Mining and Logging ²	16,600	17,100	17,300	17,500	17,800	18,400	18,700	18,900					17,788	16,813	975	5.80%
Mining	16,400	16,800	16,900	17,000	17,300	17,800	18,000	18,200					17,300	16,525	775	4.69%
Oil & Gas	13,600	13,900	14,000	14,100	14,300	14,500	14,700	14,800					14,238	13,463	775	5.76%
Construction	14,300	14,900	15,100	15,700	17,100	19,900	20,700	21,500					17,400	16,188	1,213	7.49%
Manufacturing	9,200	10,900	11,100	10,700	9,100	15,400	20,900	18,200					13,188	15,525	-2,338	-15.06%
Seafood Processing	5,600	7,300	7,400	6,700	5,000	11,200	16,700	14,000					9,238	11,850	-2,613	-22.05%
Trade/Transportation/Utilities	61,000	60,400	61,000	62,400	66,100	68,700	69,500	69,200					64,788	63,838	950	1.49%
Wholesale Trade	5,900	5,800	5,900	5,900	5,900	6,100	6,300	6,200					6,000	6,225	-225	-3.61%
Retail Trade	34,800	34,100	34,400	35,200	36,900	38,100	38,200	37,900					36,200	35,725	475	1.33%
Food & Beverage Stores	6,100	6,100	6,000	6,000	6,100	6,200	6,400	6,400					6,163	6,225	-63	-1.00%
General Merchandise Stores	9,800	9,500	9,700	9,800	10,100	10,400	10,300	10,300					9,988	9,838	150	1.52%
Trans/Warehouse/Utilities	20,300	20,500	20,700	21,300	23,300	24,500	25,000	25,100					22,588	21,888	700	3.20%
Air Transportation	5,500	5,400	5,500	5,600	5,900	6,800	6,400	6,400					5,938	5,888	50	0.85%
Information	6,000	6,100	6,100	6,000	6,100	6,200	6,100	6,100					6,088	6,238	-150	-2.40%
Telecommunications	3,900	3,900	3,900	3,900	4,000	4,100	4,000	4,000					3,963	4,175	-213	-5.09%
Financial Activities	12,900	13,000	13,100	13,100	13,400	13,900	14,300	14,200					13,488	13,425	63	0.47%
Professional & Business Svcs	27,000	27,900	27,200	27,900	28,700	29,500	29,500	29,300					28,375	28,625	-250	-0.87%
Educational & Health Services	47,000	47,400	47,700	47,700	47,400	47,600	47,000	46,700					47,313	46,150	1,163	2.52%
Health Care	33,400	33,500	33,800	33,500	33,800	34,200	34,100	33,800					33,763	32,775	988	3.01%
Leisure & Hospitality	27,800	28,400	29,400	29,500	33,300	38,600	40,300	40,200					33,438	33,913	-475	-1.40%
Accommodation	6,500	6,500	6,600	6,700	7,700	10,600	11,300	11,500					8,425	8,325	100	1.20%
Food Svcs & Drinking Places	17,600	18,100	18,700	18,800	20,900	22,400	23,100	22,900					20,313	20,563	-250	-1.22%
Other Services	11,200	11,200	11,400	11,400	11,600	11,700	12,200	12,100					11,600	11,588	13	0.11%
Government	81,200	84,100	84,400	84,600	83,100	82,900	77,600	78,800					82,088	83,413	-1,325	-1.59%
Federal Government	14,800	14,700	14,900	14,900	15,200	15,600	15,400	15,200					15,088	16,538	-1,450	-8.77%
State Government	24,500	26,700	26,800	26,900	25,700	25,200	25,100	25,500					25,800	25,775	25	0.10%
State Education	6,600	8,800	8,700	8,700	7,500	6,400	6,000	6,700					7,425	7,388	38	0.51%
Local Government	41,900	42,700	42,700	42,800	42,000	42,100	37,100	38,100					41,175	41,100	75	0.18%
Local Education	23,600	24,300	24,100	24,100	23,400	22,300	17,500	18,700					22,250	22,913	-663	-2.89%
Tribal Government ¹	3,400	3,400	3,500	3,400	3,400	3,700	3,700	3,600					3,513	3,725	-213	-5.70%

- Nonfarm Wage & Salary excludes self-employed workers, fishers, domestics, and unpaid family workers.

- All totals are non-seasonally adjusted totals.

- Government includes employees of public school systems and the University of Alaska.

- Beginning January 2001, wage and salary employment estimates were published under a new classification system. The Standard Industrial Classification system (SIC) has been replaced by the North American Industry Classification System (NAICS). Data prior to 2001 are comparable only at the Total Nonfarm and Government levels.

^{1/} As of January 2001, certain federally-recognized tribal entities were moved to Local Government, which created a series break for Total Government and Local Government. [Please see the April 2002 Alaska Economic Trends publication for a detailed explanation.](#)

^{2/} This category was called "Natural Resources and Mining" in previous years. The change is in name only; the industries it includes remain the same.

- Totals may not equal sub-sections due to rounding.

- Source: Alaska Department of Labor and Workforce Development, Research and Analysis Section

Quick Comparisons

13 vs 12 July	-900	-0.25%
13 vs 12 1st Qtr	1,900	0.60%
13 vs 12 2nd Qtr	-1,400	-0.41%
13 vs 12 3rd Qtr.	-1,400	-0.39%
13 vs 12 4th Qtr		

Dianne Blumer
Commissioner
P.O. Box 111149
Juneau, AK 99811-1149
www.labor.alaska.gov



Beth Leschper
Communications Director
907.465.2700
cell: 907.723.1321
beth.leschper@alaska.gov

Press Release

COMMISSIONER'S OFFICE

September 20, 2013

No. 13-43

Unemployment rate at 6.5 percent in August

Alaska's seasonally adjusted unemployment rate was 6.5 percent in August, up two-tenths of a percentage point from July's rate. The comparable national rate was 7.3 percent.

Alaska's rate declined substantially during the first half of the year, but it reversed course in June, putting August closer to early-2013 levels. The rate's volatility in recent months is common for preliminary rates, and August's increase is not big enough by itself to suggest a change in 2013's overall trend.

August's not seasonally adjusted rate was 5.7 percent, down two-tenths of a percentage point from July, and half a percentage point from a year earlier. August's unadjusted rate is frequently the lowest of the year, although September and October lows are not unprecedented historically.

Bristol Bay Borough had the lowest unemployment rate in August at 1.9 percent, followed by the Municipality of Skagway at 2.5 percent. Rates in both places increased from July, however, as fishing and tourism wound down from their July peak. The normal decline of the Southwest summer fishing season also caused rates to increase in the Aleutians East and Lake and Peninsula boroughs and the Dillingham Census Area.

Contact: Caroline Schultz, Economist (907) 465-6027
Research and Analysis Web site: <http://laborstats.alaska.gov>



Unemployment Rates, Seasonally Adjusted			
	8/13	7/13	8/12
Alaska	6.5%	6.3%	7.0%
U.S.	7.3%	7.4%	8.1%

Sources for graph and table: Alaska Department of Labor and Workforce Development, Research and Analysis Section; and U.S. Bureau of Labor Statistics

For detailed employment estimates, see <http://live.laborstats.alaska.gov/ces/>. The estimates are preliminary and subject to potentially large revisions.

Labor Force by Borough and Census Area, Not Seasonally Adjusted¹

	Civilian Labor Force			Unemployed					
	8/13 ^P	7/13	8/12	Number			Rate		
				8/13 ^P	7/13	8/12	8/13 ^P	7/13	8/12
Alaska Statewide	369,287	373,528	369,816	20,924	21,955	22,960	5.7	5.9	6.2
Anchorage/Mat-Su Region	195,281	198,146	196,754	9,893	10,446	11,022	5.1	5.3	5.6
Anchorage, Municipality of	153,164	155,259	154,195	7,324	7,600	8,084	4.8	4.9	5.2
Matanuska-Susitna Borough	42,117	42,887	42,559	2,569	2,846	2,938	6.1	6.6	6.9
Gulf Coast Region	42,656	43,275	42,706	2,421	2,548	2,738	5.7	5.9	6.4
Kenai Peninsula Borough	29,235	29,729	29,274	1,770	1,818	1,999	6.1	6.1	6.8
Kodiak Island Borough	7,066	7,201	7,120	297	358	380	4.2	5.0	5.3
Valdez-Cordova Census Area	6,355	6,345	6,312	354	372	359	5.6	5.9	5.7
Interior Region	55,095	55,232	55,402	3,130	3,288	3,383	5.7	6.0	6.1
Denali Borough	2,405	2,477	2,340	83	88	92	3.5	3.6	3.9
Fairbanks North Star Borough	45,970	46,236	46,334	2,334	2,409	2,560	5.1	5.2	5.5
Southeast Fairbanks Census Area	3,426	3,335	3,433	311	335	324	9.1	10.0	9.4
Yukon-Koyukuk Census Area	3,294	3,184	3,295	402	456	407	12.2	14.3	12.4
Northern Region	12,708	12,645	12,572	1,181	1,207	1,214	9.3	9.5	9.7
Nome Census Area	4,036	3,912	3,972	471	480	467	11.7	12.3	11.8
North Slope Borough	5,508	5,533	5,454	271	284	291	4.9	5.1	5.3
Northwest Arctic Borough	3,164	3,200	3,146	439	443	456	13.9	13.8	14.5
Southeast Region	43,766	43,458	43,146	2,050	2,153	2,297	4.7	5.0	5.3
Haines Borough	1,750	1,729	1,719	82	87	80	4.7	5.0	4.7
Hoonah-Angoon Census Area	1,574	1,601	1,574	130	145	145	8.3	9.1	9.2
Juneau, City and Borough of	18,689	18,628	18,385	746	761	814	4.0	4.1	4.4
Ketchikan Gateway Borough	9,507	9,430	9,376	398	436	466	4.2	4.6	5.0
Petersburg Census Area	1,814	1,784	1,818	100	100	143	5.5	5.6	7.9
Prince of Wales-Hyder Census Area	2,709	2,673	2,691	269	276	306	9.9	10.3	11.4
Sitka, City and Borough of	5,269	5,174	5,175	208	222	226	3.9	4.3	4.4
Skagway, Municipality of	934	939	922	23	21	22	2.5	2.2	2.4
Wrangell, City and Borough of	1,182	1,172	1,154	75	84	72	6.3	7.2	6.2
Yakutat, City and Borough of	338	328	332	19	21	23	5.6	6.4	6.9
Southwest Region	19,777	20,773	19,237	2,247	2,313	2,307	11.4	11.1	12.0
Aleutians East Borough	1,207	1,358	1,176	111	116	118	9.2	8.5	10.0
Aleutians West Census Area	3,186	3,116	3,093	206	222	214	6.5	7.1	6.9
Bethel Census Area	7,098	6,877	6,898	1,073	1,106	1,080	15.1	16.1	15.7
Bristol Bay Borough	1,646	2,757	1,594	32	29	38	1.9	1.1	2.4
Dillingham Census Area	2,455	2,634	2,387	186	192	197	7.6	7.3	8.3
Lake and Peninsula Borough	1,341	1,588	1,310	66	68	68	4.9	4.3	5.2
Wade Hampton Census Area	2,844	2,443	2,779	573	580	592	20.1	23.7	21.3

P = Preliminary. As more information becomes available, data are revised every month for the previous month and again at the end of every calendar year.

Note: The official definition of unemployment excludes anyone who has not made an active attempt to find work in the four-week period up to and including the week that includes the 12th of the reference month. Many in rural Alaska do not meet the definition because they have not conducted an active job search due to the scarcity of employment opportunities.

¹Unemployment rates that are not seasonally adjusted should not be compared with those that are.

Source: Alaska Department of Labor and Workforce Development, Research and Analysis Section; and U.S. Bureau of Labor Statistics

