



AEDC
Anchorage Economic
Development Corporation

February 2013 Employment Report Anchorage

5.2%

February Unemployment
Rate for Anchorage

2012 SPECIAL UPDATE

MONTHLY UNEMPLOYMENT

At the end of every calendar year the State of Alaska revises the employment estimates for the ending year, and the year prior to that. Earlier in 2013, the Department of Labor revised employment estimates for 2011 and 2012. The revised numbers reflect updated data with more available employment data.

The preliminary Department of Labor estimate for 2012 was for a growth of 1,800 jobs in Anchorage, or 1.14 percent. Revised employment data indicates employment in Anchorage increased to more than **3,300 JOBS**, or **2.15 PERCENT**.

This is a sizable increase and exceeded AEDC's estimates last year. In 2012 AEDC forecasted 1,500 new jobs in Anchorage.

PRELIMINARY EMPLOYMENT ESTIMATES (2012) Municipality of Anchorage

Industry	Jan	Feb	Mar	Apr	May	Jun	Jul	Aug	Sep	Oct	Nov	Dec	2012 YTD Avg.	2011 YTD Avg.	2012 vs 2011 YTD Change	% Change
	revised	revised	revised	revised	revised	revised	revised	revised	revised	revised	revised	preliminary				
Total Nonfarm	150,500	152,200	152,900	153,600	156,100	160,400	157,800	158,800	160,200	157,900	156,700	156,800	156,158	154,392	1,767	1.14%
Goods Producing	11,600	11,500	11,400	11,800	13,000	14,500	15,400	15,500	15,000	14,400	13,100	12,800	13,333	13,017	317	2.43%
Services Providing	138,900	140,700	141,500	141,900	143,100	145,800	142,300	143,300	145,200	143,500	143,600	144,100	142,825	141,367	1,458	1.03%
Mining and Logging ²	3,000	3,000	3,000	3,000	3,100	3,100	3,200	3,200	3,100	3,200	3,100	3,100	3,092	2,967	125	4.21%
Oil & Gas	2,900	2,900	2,900	2,900	2,900	2,900	3,000	2,900	2,900	3,000	2,900	2,900	2,917	2,808	108	3.86%
Construction	6,800	6,400	6,500	6,800	7,800	9,200	9,800	10,000	9,500	9,000	7,800	7,400	8,067	8,075	-8	-0.10%
Manufacturing	2,000	2,000	1,900	2,000	2,100	2,200	2,400	2,400	2,300	2,300	2,200	2,200	2,167	1,967	200	10.17%
Trade/Transportation/Utilities	32,400	32,300	32,500	32,800	33,800	34,300	34,800	34,500	33,900	33,100	33,300	33,400	33,425	33,083	342	1.03%
Wholesale Trade	4,500	4,400	4,500	4,500	4,600	4,700	4,800	4,800	4,600	4,500	4,500	4,500	4,575	4,600	-25	-0.54%
Retail Trade	16,900	16,700	16,700	17,000	17,400	17,400	17,700	17,500	17,300	17,300	17,600	17,600	17,258	17,117	142	0.83%
Trans/Warehouse/Utilities	11,000	11,200	11,300	11,300	11,800	12,200	12,300	12,200	11,900	11,300	11,200	11,200	11,575	11,367	208	1.83%
Air Transportation	3,000	2,900	3,000	3,000	3,100	3,200	3,200	3,200	3,000	3,000	3,000	3,000	3,050	2,967	83	2.81%
Information	3,900	3,900	3,900	3,900	3,900	3,900	3,900	3,900	3,800	3,800	3,900	3,900	3,883	3,975	-92	-2.31%
Financial Activities	8,600	8,700	8,800	8,800	8,900	8,900	8,800	8,700	8,600	8,500	8,400	8,500	8,683	8,892	-208	-2.34%
Professional & Business Svcs	18,000	18,500	18,600	18,700	19,300	20,100	20,000	20,000	20,100	19,700	19,400	19,500	19,325	18,767	558	2.98%
Educational & Health Services	23,600	23,800	23,900	23,800	23,900	24,000	23,900	24,400	24,600	24,700	24,800	25,000	24,200	23,358	842	3.60%
Health Care	17,500	17,500	17,500	17,600	17,600	17,700	17,700	17,700	18,000	18,000	18,000	18,200	17,750	17,217	533	3.10%
Leisure & Hospitality	16,100	16,200	16,500	16,400	16,700	17,500	17,800	17,800	17,500	16,800	16,900	17,000	16,933	16,517	417	2.52%
Accommodation	3,200	3,200	3,200	3,100	3,100	3,300	3,400	3,400	3,400	3,100	3,200	3,300	3,242	3,217	25	0.78%
Food Svcs & Drinking Places	10,500	10,600	10,800	11,000	11,300	11,700	11,800	11,800	11,500	11,300	11,200	11,100	11,217	10,908	308	2.83%
Other Services	5,700	5,700	5,800	5,900	6,000	6,300	6,000	5,700	5,600	5,700	5,800	5,700	5,825	5,783	42	0.72%
Government	30,500	31,600	31,600	31,600	30,700	30,800	27,200	28,300	31,200	31,100	31,200	31,200	30,583	30,992	-408	-1.32%
Federal Government	9,400	9,400	9,400	9,300	9,300	9,400	9,400	9,400	9,400	9,300	9,300	9,400	9,367	9,558	-192	-2.01%
State Government	10,000	10,900	10,900	10,900	10,200	10,200	10,100	10,200	11,000	11,000	11,000	11,000	10,617	10,625	-8	-0.08%
State Education	2,100	2,900	2,900	2,900	2,200	2,100	1,900	2,100	2,800	2,900	2,900	2,900	2,575	2,550	0	0.00%
Local Government	11,200	11,300	11,300	11,400	11,100	11,200	7,800	8,800	10,800	10,800	10,800	10,900	10,617	10,792	-175	-1.62%
Local Education	8,500	8,500	8,500	8,500	8,200	8,200	4,900	6,000	8,000	8,000	8,100	8,100	7,792	7,933	-142	-1.79%

REVISED EMPLOYMENT ESTIMATES (2012) Municipality of Anchorage

Industry	Jan	Feb	Mar	Apr	May	Jun	Jul	Aug	Sep	Oct	Nov	Dec	2012 YTD Avg.	2011 YTD Avg.	2012 vs 2011 YTD Change	% Change
	revised	revised	revised	revised	revised	revised	revised	revised	revised	revised	revised	revised				
Total Nonfarm	151,000	152,900	153,600	154,900	157,600	161,600	159,400	162,700	160,500	158,100	156,700	157,000	157,167	153,858	3,308	2.15%
Goods Producing	12,000	12,100	12,300	13,000	14,100	15,600	16,300	16,400	15,600	15,000	13,800	13,600	14,150	13,150	1,000	7.60%
Services Providing	139,000	140,900	141,300	141,900	143,500	146,000	143,100	146,300	144,900	143,100	143,000	143,400	143,033	140,683	2,350	1.67%
Mining and Logging ²	3,000	3,100	3,100	3,300	3,400	3,500	3,600	3,700	3,600	3,700	3,500	3,700	3,433	2,975	458	15.41%
Oil & Gas	2,900	2,900	3,000	3,200	3,200	3,300	3,400	3,500	3,400	3,500	3,400	3,500	3,267	2,825	442	15.63%
Construction	7,100	7,100	7,200	7,600	8,500	9,600	9,900	10,100	9,600	9,100	8,000	7,700	8,458	8,108	350	4.32%
Manufacturing	1,900	1,900	2,000	2,100	2,300	2,500	2,700	2,600	2,300	2,300	2,200	2,200	2,250	2,075	175	8.43%
Trade/Transportation/Utilities	32,000	31,800	31,800	32,300	33,300	33,900	34,100	34,100	33,700	33,000	32,900	32,900	32,983	33,083	-100	-0.30%
Wholesale Trade	4,400	4,400	4,400	4,500	4,600	4,700	4,700	4,700	4,700	4,600	4,400	4,400	4,542	4,617	-75	-1.62%
Retail Trade	16,900	16,600	16,600	16,800	17,100	17,200	17,300	17,400	17,200	17,200	17,400	17,400	17,092	17,125	-33	-0.19%
Trans/Warehouse/Utilities	10,700	10,800	10,800	11,000	11,600	12,000	12,000	12,000	11,800	11,200	11,100	11,100	11,342	11,325	17	0.15%
Air Transportation	2,800	2,900	2,900	2,900	3,000	3,100	3,000	3,000	3,000	3,000	2,900	3,000	2,958	2,942	17	0.57%
Information	3,900	3,900	3,900	3,900	3,900	3,900	4,000	3,900	3,900	3,900	3,900	3,900	3,908	3,975	-67	-1.68%
Financial Activities	8,000	8,000	8,000	8,100	8,200	8,300	8,600	8,500	8,100	8,100	8,100	8,100	8,175	8,450	-275	-3.25%
Professional & Business Svcs	18,800	19,200	19,300	19,400	20,000	20,800	20,800	20,800	20,500	20,100	19,800	19,900	19,500	18,950	1,000	5.28%
Educational & Health Services	24,200	24,600	24,500	24,500	24,700	24,600	24,700	24,700	24,600	24,800	24,800	25,000	24,642	23,692	950	4.01%
Health Care	17,700	17,800	17,800	17,900	18,100	18,100	18,100	18,200	18,000	18,000	18,100	18,200	18,000	17,242	758	4.40%
Leisure & Hospitality	15,900	16,100	16,400	16,600	16,900	17,800	17,900	17,900	17,300	16,600	16,700	16,700	16,900	16,567	333	2.01%
Accommodation	3,100	3,100	3,100	3,100	3,000	3,400	3,400	3,400	3,300	3,100	3,100	3,200	3,192	3,183	8	0.26%
Food Svcs & Drinking Places	10,700	10,800	11,000	11,400	11,600	11,800	11,800	11,900	11,600	11,300	11,200	11,200	11,358	10,967	392	3.57%
Other Services	5,600	5,700	5,700	5,800	5,800	5,900	5,900	5,900	5,800	5,800	5,800	5,800	5,792	5,792	0	0.00%
Government	30,400	31,500	31,600	31,400	30,600	30,700	27,200	30,400	31,000	31,000	31,000	31,000	30,650	30,175	475	1.57%
Federal Government	9,300	9,300	9,300	9,100	9,100	9,200	9,100	9,100	9,000	9,000	8,900	9,000	9,117	9,517	-400	-4.20%
State Government	10,000	10,900	11,000	10,900	10,400	10,400	10,300	10,400	11,100	11,100	11,100	11,100	10,733	10,650	83	0.78%
State Education	2,100	2,900	2,900	2,900	2,200	2,100	1,900	2,200	2,900	2,900	3,000	2,900	2,575	2,550	25	0.98%
Local Government	11,200	11,300	11,400	11,400	11,100	11,200	7,700	10,900	10,800	10,900	10,900	10,900	10,808	10,000	808	8.08%
Local Education	8,300	8,500	8,500	8,600	8,300	8,200	4,800	8,000	8,000	8,100	8,100	8,100	7,958	7,117	842	11.83%

MONTHLY UNEMPLOYMENT

The unemployment rate for Anchorage in February was **5.2 percent**, a 0.3 percent decrease from January. **This is the FIRST TIME SINCE 1996** where Anchorage's unemployment rate **dropped from January to February**. **February's rate is often the highest monthly reading each year**; this low rate indicates a strong start for this year's employment climate. For comparison, the national unemployment rate was 8.1 percent and the statewide rate was 7.2 percent. **Anchorage's monthly unemployment rate has been under 5.5 percent for the last seven months.**

YEAR-TO-DATE UNEMPLOYMENT

The average year-to-date (YTD) **non-seasonally adjusted unemployment rate in Anchorage was 5.4 percent**, down from 5.5 percent in January and 0.6 percent lower than the 2012 YTD average. An **increase of 572 in the employment total** and a decrease of 423 in the Anchorage labor force during the YTD period has resulted in a reduction of 995 people in the reported unemployment total.

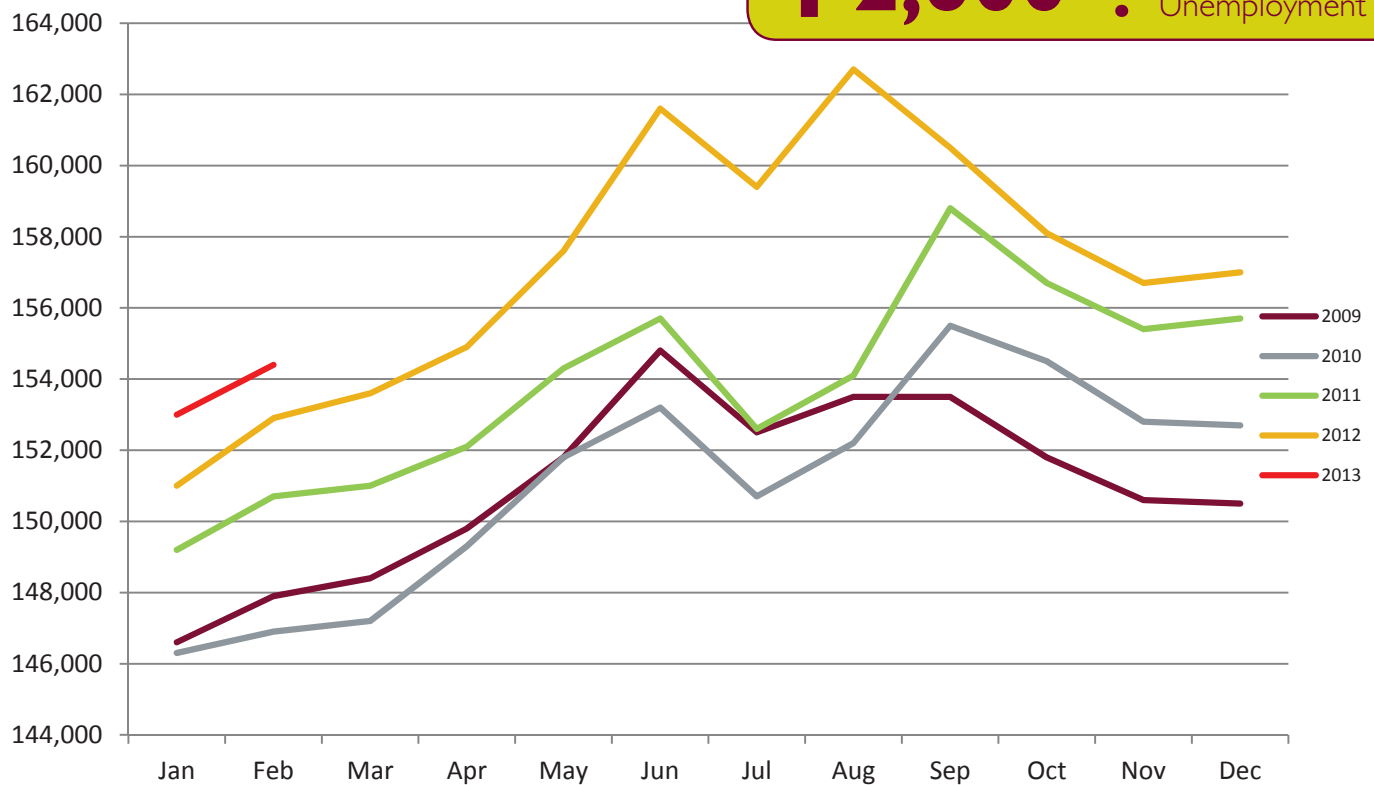
It is important to note that these unemployment numbers represent the labor force residing in Anchorage, and do not include jobs in Anchorage held by residents from outside the municipality. The industry employment estimates referenced in the remainder of this report are representative of all jobs in the Municipality of Anchorage, regardless of the job holder's place of residency.

ANCHORAGE INDUSTRY EMPLOYMENT ESTIMATES

As for the Anchorage Industry Employment estimates, the YTD average is growing strongly over 2012 with a **total increase of 1,750 jobs** to date. Industries showing the largest YTD growth rates include **oil & gas, manufacturing and construction**. Seven of the ten major sector's February 2013 averages are at or **above February 2012** rates - indicating sustained growth in many fields.

ANCHORAGE EMPLOYMENT Municipality of Anchorage 2009-Present

 Increase of jobs
Feb. 13 vs. Feb. 12
2,600
 **5.2%**
 February 2013
 Unemployment Rate



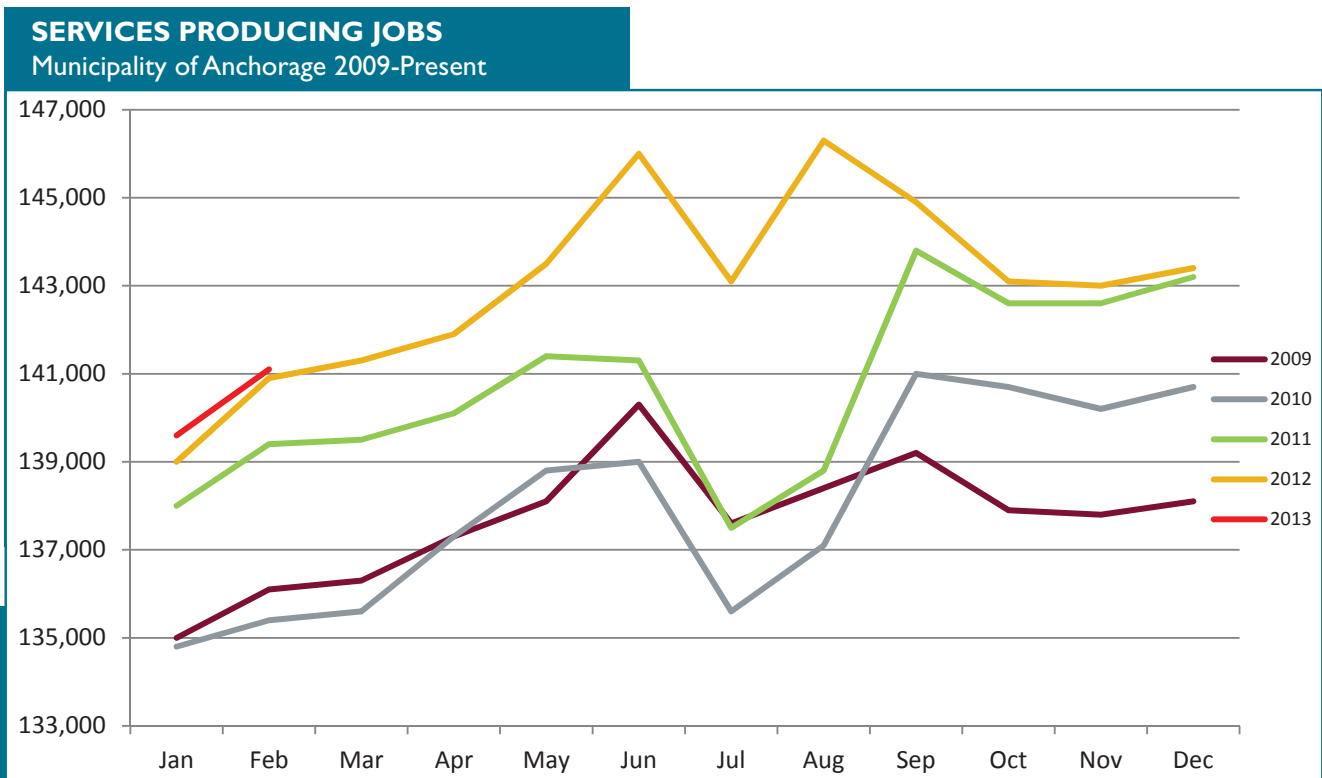
SERVICES PRODUCING JOBS

ENGINEERING, RETAIL, TOURISM, HEALTH CARE, ETC.

Services producing jobs in Anchorage totaled **141,100** for February, a 1,500 increase over January. Overall, the YTD average is **up 400 jobs** from 2012 YTD.

AEDC forecasted the Professional and Business Services sector to see growth in 2013 and is being proven correct with 650 new jobs added when compared to this time last year. Another sector with forecasted growth is Leisure and Hospitality. This sector added 250 jobs when compared to last February. While retail jobs have seen a smaller rise with an additional 50 jobs, greater growth is indicated as local retailers are reporting increased spending, despite the recent Social Security tax hike.

As expected from AEDC's 2013 Forecast, the Federal and local government sectors are averaging less jobs, each averaging 450 less than this point last year. Losses are also being seen in the information and financial activities industries with each losing 100 jobs - continuing the decline that was seen at the end of 2012.



↑ Increase of Services Producing Jobs YTD
400

February total:
141,100
Services Producing Jobs in Anchorage

••• FEB. 12 vs. FEB. 13
••• YEAR TO DATE

Educational & Health Services
+650

Leisure & Hospitality
+250

Information & Financial
-450

Professional & Business Services
+650

Retail
+50

Local & Federal Government
-450

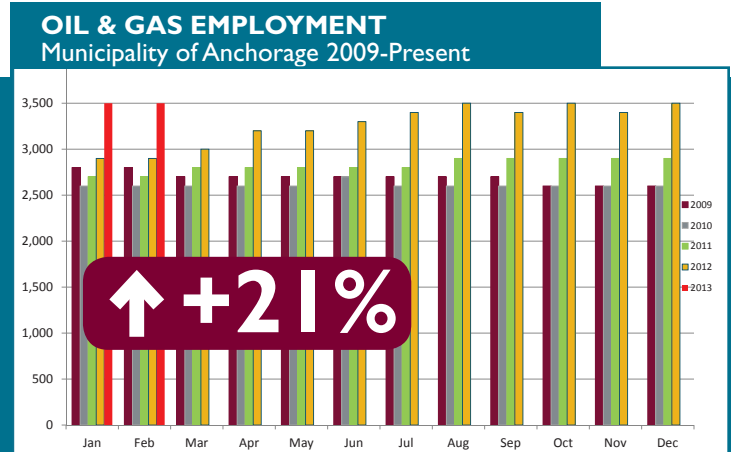
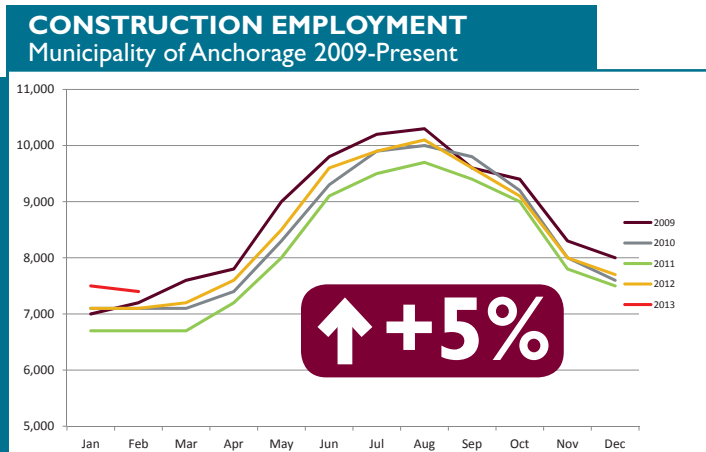
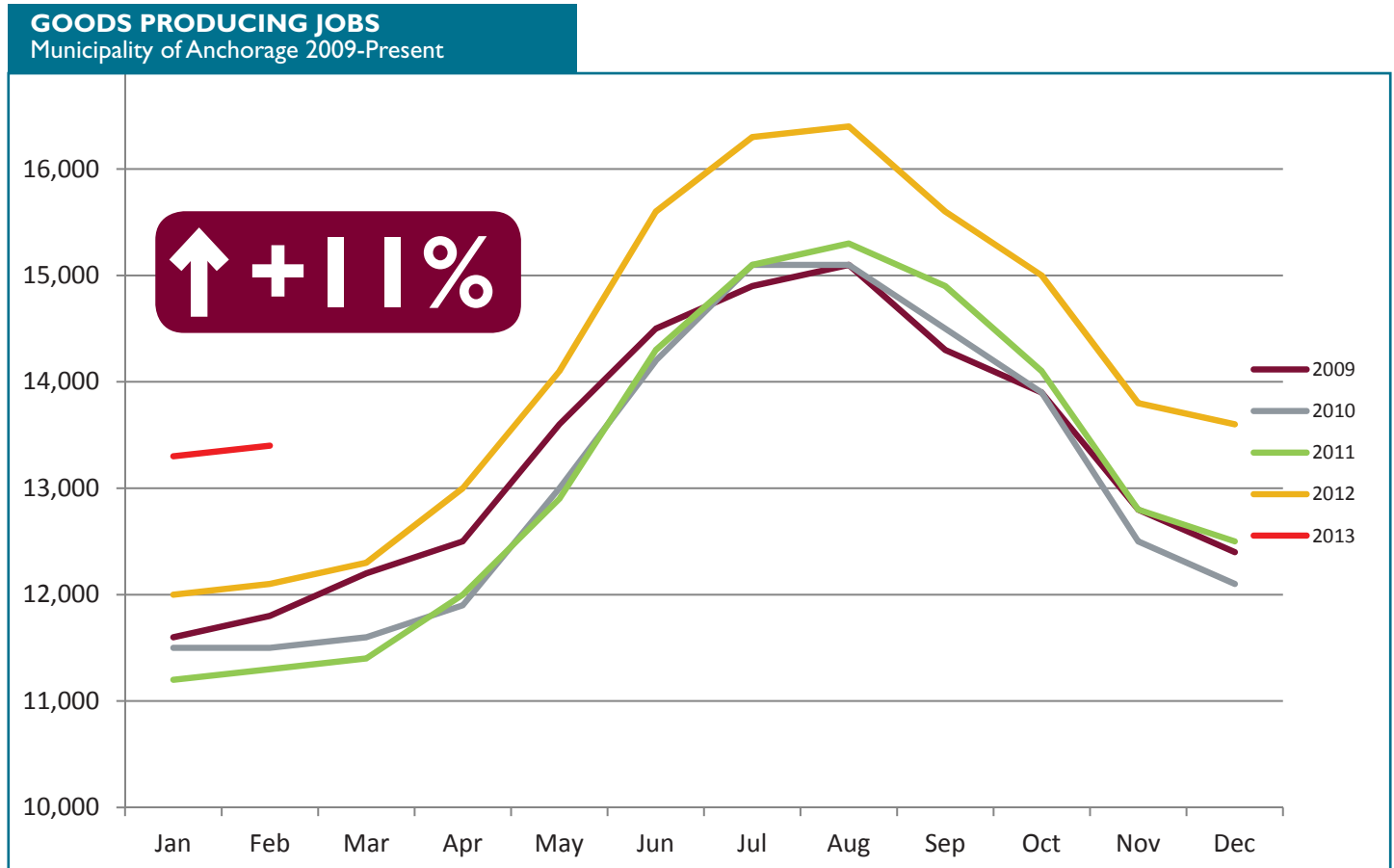
GOODS PRODUCING JOBS

CONSTRUCTION WORK, MINING, OIL & GAS PRODUCTION

Goods producing jobs (does not include jobs which support the production or maintenance of production jobs) are showing **remarkable growth**, averaging **1,300 more jobs** in 2013 YTD over the same period in 2012.

The **oil & gas sector is leading with 600 more jobs** than last year at this point giving it a **growth rate of 20 percent**. Increased production in Cook Inlet oil fields from December to January may have helped to spur this job growth. AEDC forecasted this industry's employment to be flat this year.

The construction industry is also seeing higher job numbers than usual in February, averaging 350 jobs over last 2012's YTD.

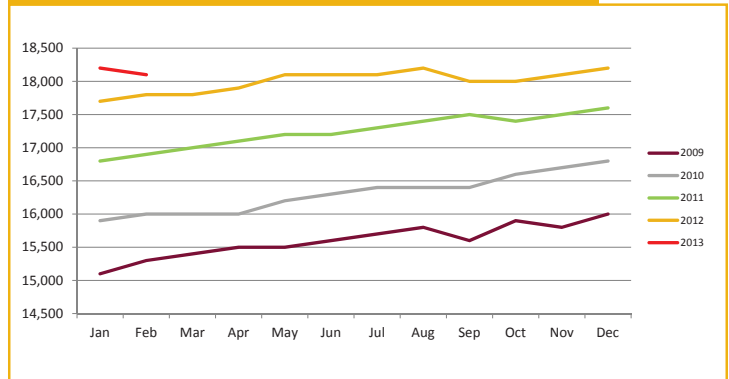


••••• SERVICES PRODUCING JOBS SUMMARY

HEALTH CARE EMPLOYMENT

The health care industry is going strong with 400 more YTD jobs over 2012. The **2.25 PERCENT JOB GROWTH** YTD in the local health care sector is about half of the 2012 end of year rate, but it is still **ONE OF THE FASTEST GROWING SERVICE PRODUCING INDUSTRIES**. The healthcare industry is moderating as expected by AEDC's 2013 Forecast.

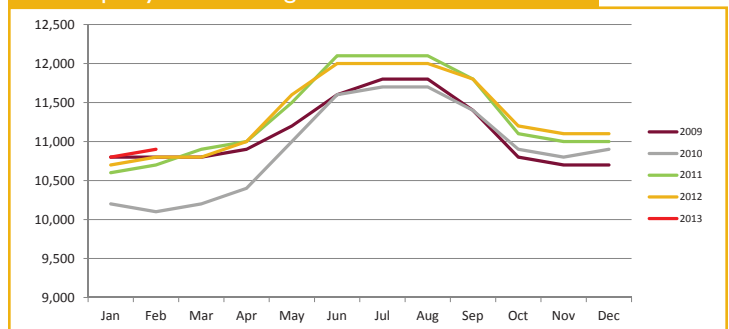
HEALTH CARE EMPLOYMENT
Municipality of Anchorage 2009-Present



TRANSPORTATION

February's estimate of **10,900 JOBS** is slightly higher than the 2012 estimate. The YTD average is 100 jobs higher as well. While some shipping companies are forecasting low expectations for the year, recent projections by the International Air Transport Association indicate optimism in the transportation industry. **AEDC estimates that this industry will retain these 100 jobs through the end of the year.**

TRANSPORTATION EMPLOYMENT
Municipality of Anchorage 2009-Present

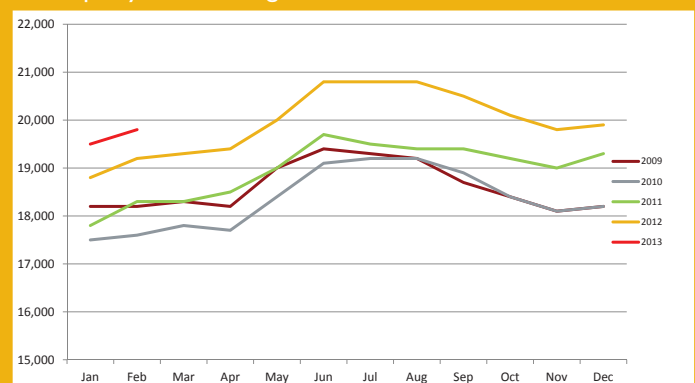


PROFESSIONAL & BUSINESS SERVICES

ENGINEERING, ARCHITECTURE, LEGAL SERVICES, ACCOUNTING, SCIENTIFIC RESEARCH, WASTE MANAGEMENT & ADMINISTRATIVE SERVICES

The YTD average is **UP 650 JOBS** from 2012 and the rate of increase is the largest of all service providing industries at **3.42 PERCENT**. Reports of increased requests for services from local engineering firms suggest these gains in the professional & business services industry may continue throughout the year.

PROFESSIONAL & BUSINESS SERVICES EMPLOYMENT
Municipality of Anchorage 2009-Present



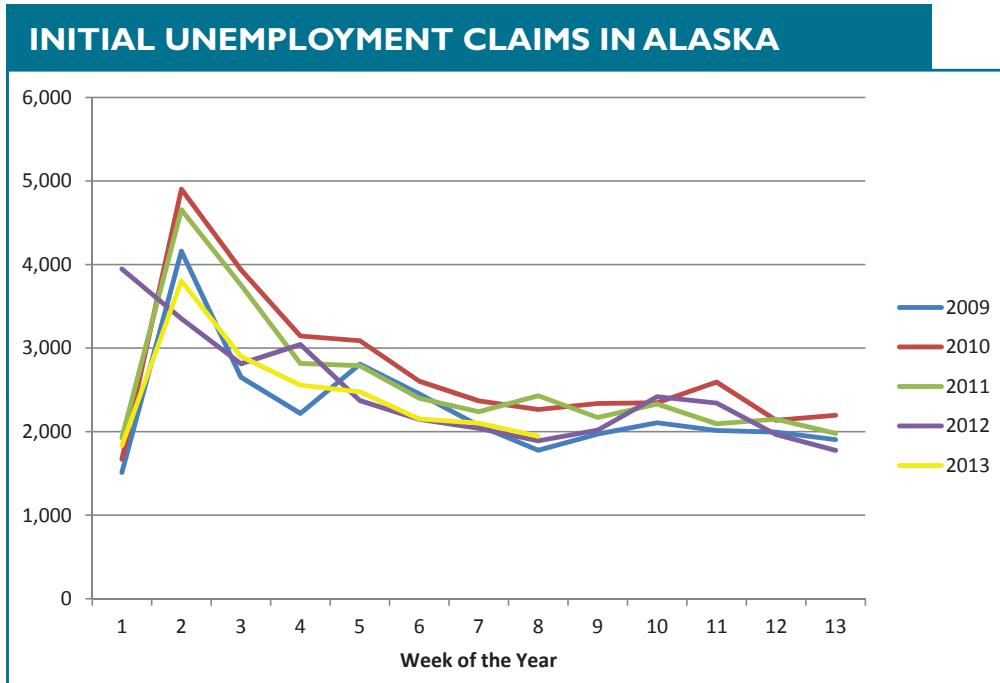
↑ Increase of Professional & Business Services jobs
650
Feb. 13 vs. Feb. 12

↑ **3.42%**

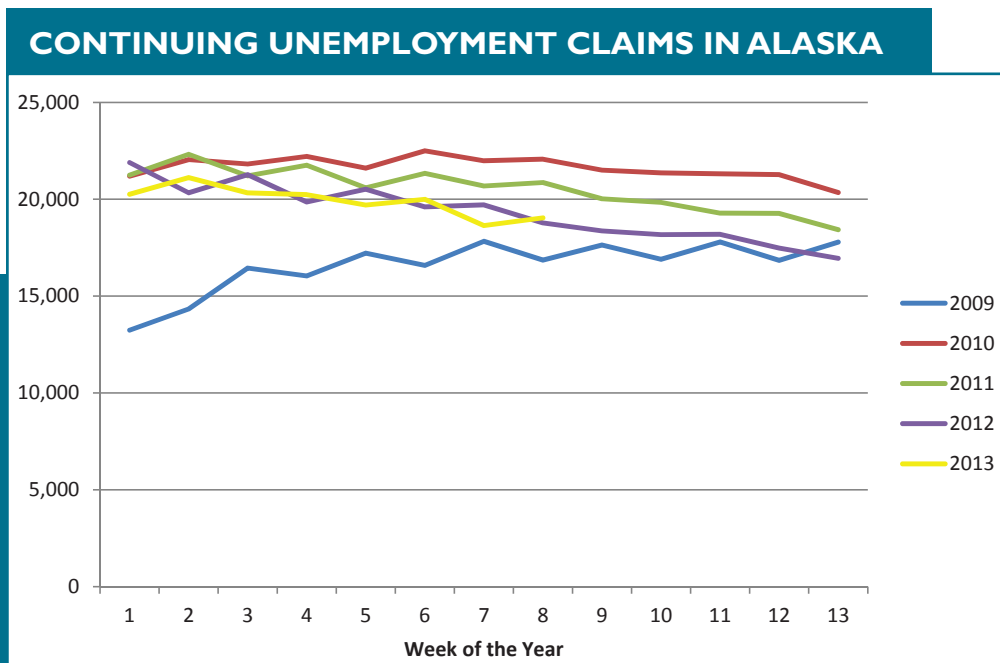
↑ **19,800**
February 2013
Professional & Business Services Jobs

UNEMPLOYMENT CLAIMS

Initial unemployment claim applications can be interpreted as a proxy for layoffs. They tend to fall as job growth accelerates.



Continuing claims figures helps to show how well unemployed workers are re-entering the workforce. This total does not include workers receiving extended benefits from the federal government. **The initial trend for 2013 is for lower levels than the previous three years.** The number of claims tend to decline as the summer approaches and there is a good chance that continuing claims will fall below 10,000 in the third quarter for the first time in five years.



All data referenced in this employment report is from the State of Alaska, Dept. of Labor & Workforce Development website: www.laborstats.alaska.gov

UNEMPLOYMENT ANALYSIS (YTD, 2013)

Anchorage, Mat-Su, Kenai Peninsula Borough

	Jan revised	Feb preliminary	Mar	Apr	May	Jun	Jul	Aug	Sep	Oct	Nov	Dec	13 YTD Avg	12 YTD Avg	13 vs 12
Municipality of Anchorage															
Labor Force	157,275	157,059											157,167	157,590	(423)
Employment	148,567	148,917											148,742	148,170	572
Unemployment	8,708	8,142											8,425	9,420	(995)
Unemployment Rate	5.5%	5.2%											5.4%	6.0%	-0.6%
Mat-Su Borough															
Labor Force	44,213	44,064											44,139	44,542	(403)
Employment	40,288	40,383											40,336	40,180	156
Unemployment	3,925	3,681											3,803	4,362	(559)
Unemployment Rate	8.9%	8.4%											8.6%	9.8%	-1.2%
Kenai Peninsula Borough															
Labor Force	26,413	26,525											26,469	26,509	(40)
Employment	23,879	24,119											23,999	23,698	301
Unemployment	2,534	2,406											2,470	2,811	(341)
Unemployment Rate	9.6%	9.1%											9.3%	10.6%	-1.3%
Southcentral Region															
Labor Force	227,901	227,648											227,775	228,641	(866)
Employment	212,734	213,419											213,077	212,048	1,029
Unemployment	15,167	14,229											14,698	16,593	(1,895)
Unemployment Rate	6.7%	6.3%											6.5%	7.3%	-0.8%
State of Alaska															
Labor Force	361,085	362,412											366,297	362,859	3,439
Employment	333,414	336,424											340,711	333,408	7,303
Unemployment	27,671	25,988											25,586	29,451	(3,865)
Unemployment Rate	7.7%	7.2%											7.0%	8.1%	-1.1%

*Note: These numbers reflect employment, unemployment, etc. for only those people that are residence of the specified City/Region, thus are not inclusive of people who commute to another city for their jobs. (Ex: Someone lives in Wasilla but works in Anchorage. They would be counted in the Mat-Su Borough's labor force and employment numbers, not the Municipality of Anchorage numbers)

INDUSTRY EMPLOYMENT ESTIMATES 2013

Municipality of Anchorage

Industry	Jan	Feb	Mar	Apr	May	Jun	Jul	Aug	Sep	Oct	Nov	Dec	2013 YTD Avg.	Avg.	YTD Change	% Change
Total Nonfarm	revised 153,000	preliminary 154,400											153,700	151,950	1,750	1.15%
Goods Producing	13,300	13,400											13,350	12,050	1,300	10.79%
Services Providing	139,600	141,100											140,350	139,950	400	0.29%
Mining and Logging ²	3,600	3,700											3,650	3,050	600	19.67%
Oil & Gas	3,500	3,500											3,500	2,900	600	20.69%
Construction	7,500	7,400											7,450	7,100	350	4.93%
Manufacturing	2,200	2,200											2,200	1,900	300	15.79%
Trade/Transportation/Utilities	32,000	31,900											31,950	31,900	50	0.16%
Wholesale Trade	4,300	4,300											4,300	4,400	-100	-2.27%
Retail Trade	16,900	16,700											16,800	16,750	50	0.30%
Trans/Warehouse/Utilities	10,800	10,900											10,850	10,750	100	0.93%
Air Transportation	2,900	2,900											2,900	2,850	50	1.75%
Information	3,800	3,800											3,800	3,900	-100	-2.56%
Financial Activities	7,900	7,900											7,900	8,000	-100	-1.25%
Professional & Business Svcs	19,500	19,800											19,650	19,000	650	3.42%
Educational & Health Services	24,900	25,200											25,050	24,400	650	2.66%
Health Care	18,200	18,100											18,150	17,750	400	2.25%
Leisure & Hospitality	16,100	16,400											16,250	16,000	250	1.56%
Accommodation	3,100	3,200											3,150	3,100	50	1.61%
Food Svcs & Drinking Places	10,800	11,000											10,900	10,750	150	1.40%
Other Services	5,600	5,700											5,650	5,650	0	0.00%
Government	29,800	30,400											30,100	30,950	-850	-2.75%
Federal Government	8,900	8,800											8,850	9,300	-450	-4.84%
State Government	10,200	10,900											10,550	10,450	100	0.96%
State Education	2,100	2,900											2,500	2,500	0	0.00%
Local Government	10,800	10,800											10,800	11,250	-450	-4.00%
Local Education	8,000	8,000											8,000	8,400	-400	-4.76%

¹ Nonfarm Wage & Salary excludes self-employed workers, fishers, domestics, and unpaid family workers.

² All totals are seasonally non-adjusted totals.

³ Government includes employees of public school systems and the University of Alaska.

⁴ Beginning January 2001, wage and salary employment estimates were published under a new classification system. The Standard Industrial Classification system (SIC) has been replaced by the North American Industry Classification System (NAICS). Data prior to 2001 are comparable only at the Total Nonfarm and Government levels.

⁵ As of January 2001, certain federally-recognized tribal entities were moved to Local Government, which created a series break for Total Government and Local Government. Please see the April 2002 Alaska Economic Trends publication for a detailed explanation.

⁶ This category was called "Natural Resources and Mining" in previous years. The change is in name only; the industries it includes remain the same.

⁷ Some totals may not equal components due to rounding.

Source: Alaska Department of Labor and Workforce Development, Research and Analysis Section

* Note: The above numbers are representative of all people employed in the Municipality of Anchorage, this is inclusive of workers who claim residence outside of the Municipality of Anchorage. (Ex: someone who lives in the Mat-Su, but works in Anchorage would be included in these number)

Quick Comparisons

13 vs 12
Feb. 1,500 0.98%

13 vs 12
1st Qtr 1,750 1.15%

13 vs 12
2nd Qtr

13 vs 12
3rd Qtr.

13 vs 12
4th Qtr.

INDUSTRY EMPLOYMENT ESTIMATES 2013

State of Alaska

Industry	Jan	Feb	Mar	Apr	May	Jun	Jul	Aug	Sep	Oct	Nov	Dec	2013 YTD Avg.	2012 YTD Avg.	2013 vs 2012 YTD Change	% Change
Total Nonfarm	revised 314,200	preliminary 320,600												315,750	1,650	0.52%
Goods Producing	40,100	42,900											41,500	40,850	650	1.59%
Services Providing	274,100	277,700											275,900	274,900	1,000	0.36%
Mining and Logging ²	16,600	17,100											16,850	15,650	1,200	7.67%
Mining	16,400	16,800											16,600	15,500	1,100	7.10%
Oil & Gas	13,600	13,900											13,750	12,850	900	7.00%
Construction	14,300	14,900											14,600	13,150	1,450	11.03%
Manufacturing	9,200	10,900											10,050	12,050	-2,000	-16.60%
Seafood Processing	7,200	9,100											8,150	8,750	-600	-6.86%
Trade/Transportation/Utilities	61,000	60,600											60,800	59,700	1,100	1.84%
Wholesale Trade	5,900	5,900											5,900	6,000	-100	-1.67%
Retail Trade	34,800	34,200											34,500	34,250	250	0.73%
Food & Beverage Stores	6,100	6,100											6,100	5,950	150	2.52%
General Merchandise Stores	9,800	9,600											9,700	9,800	-100	-1.02%
Trans/Warehouse/Utilities	20,300	20,500											20,400	19,450	950	4.88%
Air Transportation	5,500	5,400											5,450	5,450	0	0.00%
Information	6,000	6,100											6,050	6,200	-150	-2.42%
Telecommunications	3,900	3,900											3,900	4,150	-250	-6.02%
Financial Activities	12,900	13,000											12,950	13,100	-150	-1.15%
Professional & Business Svcs	27,000	27,800											27,400	27,100	300	1.11%
Educational & Health Services	47,000	47,400											47,200	45,700	1,500	3.28%
Health Care	33,400	33,400											33,400	32,350	1,050	3.25%
Leisure & Hospitality	27,800	28,500											28,150	28,150	0	0.00%
Accommodation	6,500	6,500											6,500	6,100	400	6.56%
Food Svcs & Drinking Places	17,600	18,200											17,900	18,200	-300	-1.65%
Other Services	11,200	11,300											11,250	11,300	-50	-0.44%
Government	81,200	83,000											82,100	83,650	-1,550	-1.85%
Federal Government	14,800	14,900											14,850	16,100	-1,250	-7.76%
State Government	24,500	25,400											24,950	25,350	-400	-1.58%
State Education	6,600	7,400											7,000	7,650	-650	-8.50%
Local Government	41,900	42,700											42,300	42,200	100	0.24%
Local Education	23,600	24,300											23,950	24,450	-500	-2.04%
Tribal Government ¹	3,400	3,400											3,400	3,400	0	0.00%

- Nonfarm Wage & Salary excludes self-employed workers, fishers, domestics, and unpaid family workers.

- All totals are non-seasonally adjusted totals.

- Government includes employees of public school systems and the University of Alaska.

- Beginning January 2001, wage and salary employment estimates were published under a new classification system. The Standard Industrial Classification system (SIC) has been replaced by the North American Industry Classification System (NAICS). Data prior to 2001 are comparable only at the Total Nonfarm and Government levels.

^{1/} As of January 2001, certain federally-recognized tribal entities were moved to Local Government, which created a series break for Total Government and Local Government. Please see the April 2002 Alaska Economic Trends publication for a detailed explanation.

^{2/} This category was called "Natural Resources and Mining" in previous years. The change is in name only; the industries it includes remain the same.

- Totals may not equal sub-sections due to rounding.

- Source: Alaska Department of Labor and Workforce Development, Research and Analysis Section

Quick Comparisons

13 vs 12 Feb.	1,200	0.38%
13 vs 12 1st Qtr	1,650	0.52%
13 vs 12 2nd Qtr		
13 vs 12 3rd Qtr		
13 vs 12 4th Qtr		

Dianne Blumer
Commissioner
P.O. Box 111149
Juneau, AK 99811-1149
www.labor.alaska.gov



Beth Leschper
Communications Director
907.465.2700
cell: 907.723.1321
beth.leschper@alaska.gov

Press Release

COMMISSIONER'S OFFICE

March 22, 2013

No. 13-14

Unemployment rate at 6.5 percent in February

Alaska's seasonally adjusted unemployment rate was 6.5 percent in February, down two-tenths of a percentage point from January's rate. The comparable national rate was 7.7 percent.

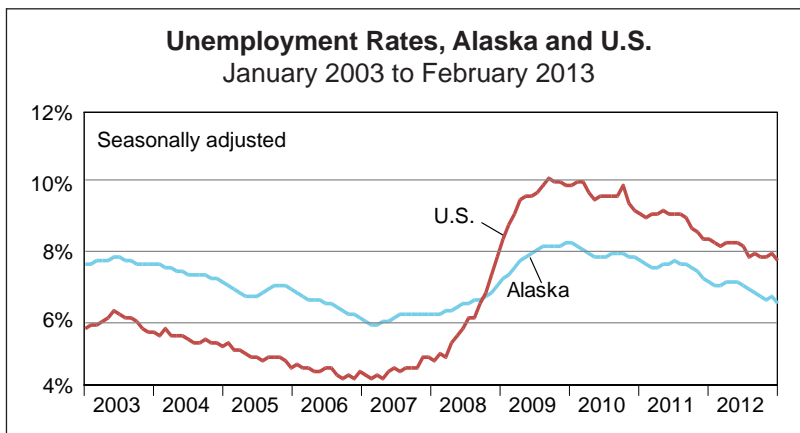
Alaska's February rate was below the 10-year average of 7.1 percent, while the national rate was still above its 10-year average of 6.8 percent.

Area unemployment rates, which are not seasonally adjusted, declined in all but six boroughs and census areas from January to February. Rates dropped the most in the Aleutians East Borough and Aleutians West Census Area, where they fell 3.7 and 3.5 percentage points respectively due to winter commercial fisheries.

The lowest unemployment rate in February was in the North Slope Borough at 4.8 percent and the highest rate was in Hoonah-Angoon Census Area at 25.6 percent. The Municipality of Skagway, Wade Hampton Census Area, and Denali Borough also had rates above 20 percent.

Unemployment rates in Alaska's urban centers were all below the statewide average. The City and Borough of Juneau had the lowest at 5.1 percent, followed by the Municipality of Anchorage at 5.2 percent and Fairbanks North Star Borough at 6.4 percent.

Contact: Caroline Schultz, Economist (907) 465-6027
Research and Analysis Web site: <http://laborstats.alaska.gov>



Unemployment Rates, Seasonally Adjusted			
	2/13	1/13	2/12
Alaska	6.5%	6.7%	7.1%
U.S.	7.7%	7.9%	8.3%

Sources for graph and table: Alaska Department of Labor and Workforce Development, Research and Analysis Section; and U.S. Bureau of Labor Statistics

For detailed employment estimates, see <http://live.laborstats.alaska.gov/ces/>. The estimates are preliminary and subject to potentially large revisions.

Labor Force by Borough and Census Area, Not Seasonally Adjusted¹

	Civilian Labor Force			Unemployed					
	2/13 ^P	1/13	2/12	Number			Rate		
				2/13 ^P	1/13	2/12	2/13 ^P	1/13	2/12
Alaska Statewide	362,412	361,085	363,470	25,988	27,671	29,402	7.2	7.7	8.1
Anchorage/Mat-Su Region	201,123	201,488	201,828	11,823	12,633	13,786	5.9	6.3	6.8
Municipality of Anchorage	157,059	157,275	157,331	8,142	8,708	9,403	5.2	5.5	6.0
Matanuska-Susitna Borough	44,064	44,213	44,498	3,681	3,925	4,384	8.4	8.9	9.9
Gulf Coast Region	38,303	38,075	38,150	3,296	3,576	3,791	8.6	9.4	9.9
Kenai Peninsula Borough	26,525	26,413	26,488	2,406	2,534	2,806	9.1	9.6	10.6
Kodiak Island Borough	7,205	6,940	7,123	366	480	421	5.1	6.9	5.9
Valdez-Cordova Census Area	4,573	4,722	4,539	524	562	564	11.5	11.9	12.4
Interior Region	53,385	52,513	53,617	4,049	4,350	4,625	7.6	8.3	8.6
Denali Borough	753	757	769	173	181	192	23.0	23.9	25.0
Fairbanks North Star Borough	46,117	45,324	46,315	2,941	3,207	3,430	6.4	7.1	7.4
Southeast Fairbanks Census Area	3,383	3,377	3,370	420	450	446	12.4	13.3	13.2
Yukon-Koyukuk Census Area	3,132	3,055	3,163	515	512	557	16.4	16.8	17.6
Northern Region	13,287	13,068	12,925	1,283	1,258	1,326	9.7	9.6	10.3
Nome Census Area	4,355	4,278	4,223	509	512	516	11.7	12.0	12.2
North Slope Borough	5,731	5,611	5,589	276	267	313	4.8	4.8	5.6
Northwest Arctic Borough	3,201	3,179	3,113	498	479	497	15.6	15.1	16.0
Southeast Region	37,181	37,411	37,471	3,003	3,181	3,359	8.1	8.5	9.0
Haines Borough	1,093	1,087	1,089	131	131	141	12.0	12.1	12.9
Hoonah-Angoon Census Area	818	845	820	209	213	212	25.6	25.2	25.9
Juneau, City and Borough of	18,194	18,331	18,257	931	1,020	1,027	5.1	5.6	5.6
Ketchikan Gateway Borough	7,362	7,389	7,437	601	616	690	8.2	8.3	9.3
Petersburg Census Area	1,520	1,536	1,523	209	238	211	13.8	15.5	13.9
Prince of Wales-Hyder Census Area	2,244	2,234	2,339	378	387	472	16.8	17.3	20.2
Sitka, City and Borough of	4,247	4,246	4,261	280	299	300	6.6	7.0	7.0
Skagway, Municipality of	503	528	533	119	129	149	23.7	24.4	28.0
Wrangell, City and Borough of	959	957	966	112	119	119	11.7	12.4	12.3
Yakutat, City and Borough of	241	258	246	33	29	38	13.7	11.2	15.4
Southwest Region	19,130	18,531	19,478	2,530	2,673	2,513	13.2	14.4	12.9
Aleutians East Borough	1,316	1,393	1,353	120	178	128	9.1	12.8	9.5
Aleutians West Census Area	4,360	3,703	4,445	231	325	220	5.3	8.8	4.9
Bethel Census Area	7,105	7,329	7,208	1,165	1,155	1,151	16.4	15.8	16.0
Bristol Bay Borough	449	465	469	41	48	51	9.1	10.3	10.9
Dillingham Census Area	2,162	1,925	2,218	220	227	227	10.2	11.8	10.2
Lake and Peninsula Borough	928	900	959	100	104	112	10.8	11.6	11.7
Wade Hampton Census Area	2,810	2,816	2,826	653	636	624	23.2	22.6	22.1

P = Preliminary. As more information becomes available, data are revised every month for the previous month and again at the end of every calendar year.

Note: The official definition of unemployment excludes anyone who has not made an active attempt to find work in the four-week period up to and including the week that includes the 12th of the reference month. Many in rural Alaska do not meet the definition because they have not conducted an active job search due to the scarcity of employment opportunities.

¹Unemployment rates that are not seasonally adjusted should not be compared with those that are.

Source: Alaska Department of Labor and Workforce Development, Research and Analysis Section; and U.S. Bureau of Labor Statistics