



**AEDC**  
**Anchorage Economic**  
Development Corporation

# Anchorage Employment Report

November 2014

Sponsored by:



**First National Bank**

**A L A S K A**

MEMBER FDIC

# 4.8%

November Unemployment  
Rate for Anchorage

## EXECUTIVE SUMMARY

### MONTHLY UNEMPLOYMENT

**The not seasonally adjusted unemployment rate for Anchorage in November was 4.8 percent, up 0.1 percent from the October revised rate.** This is well below the national rate of 5.5 percent and the statewide rate of 6.2 percent. This decrease continues the 2014 trend that follows the 2013 ebb and flow of employment in Anchorage. This is expected to continue throughout the remainder of 2014. Current indications are that the annual unemployment rate for Anchorage in 2014 will be slightly higher than 2013 at 5.1 percent. *As always, it should be noted that these are preliminary survey figures for November and will be revised next month.*

### YEAR-TO-DATE UNEMPLOYMENT

The average year-to-date (YTD) non-seasonally adjusted unemployment rate in Anchorage was 5.1 percent at the end of November which is the same rate as this time last year. An increase of 703 in the employment total and 809 in the Anchorage labor force during the YTD period has resulted in the reported unemployment total increasing by 103. The total number of unemployed people in Anchorage for the month of November is estimated at 7,613 (those actively looking for jobs), 328 more than November 2013. In the Mat-Su and Kenai Peninsula Boroughs, the YTD average monthly unemployment rate is down 0.1 percent from 2013 YTD in both regions (see the charts at the end of this report for more details).

*It is important to note that these Anchorage unemployment numbers represent the labor force residing in Anchorage, and does not describe the number of filled positions in Anchorage. The industry employment estimates referenced in the remainder of this report are representative of the number of jobs in the Municipality of Anchorage, regardless of the job holder's place of residency.*

### ANCHORAGE INDUSTRY EMPLOYMENT ESTIMATES

As for Anchorage industry employment estimates, which includes total jobs in Anchorage held by city residents and commuters, the YTD average is continuing to show improvement over 2013 with a net increase of 291 jobs so far. The private sector (total jobs minus government jobs) has grown by 801 jobs during this time, equaling a growth rate of 0.6 percent. Government employment has declined by 509 jobs so far, with losses in federal (-291) and local (-255) employment. State government positions have increased by 45 over the same period.

In the goods producing category, the Mining & Logging industry (which includes Oil & Gas employment) continues to show the largest YTD growth, while service providing industries such as Information, Trade/Transportation/Utilities and Construction are also showing strong growth. Eight of the ten major industries' November 2014 averages are at or above November 2013 totals, indicating sustained growth in many fields.

Overall, Anchorage's employment statistics are very strong. **November's jobs total of 157,300 is the highest total for the month on record.** Significant monthly improvements in the jobs totals for the first half of the year have been the main driver of the YTD improvements. The later half of 2014 job statistics have begun to follow a steady rate of decrease that has been seen in the last two years, albeit at a higher level. Coupled with the low YTD unemployment rate, Anchorage's labor market is typical of a "full employment" environment.

# 4.8%

November Unemployment  
Rate for Anchorage

# 5.1%

YTD Unemployment  
Rate for Anchorage

# +801

Private Sector Job Growth  
2014 YTD average  
compared to 2013 YTD avg.

# 157,300

Total jobs in Anchorage  
November 2014 (preliminary)

## EXECUTIVE SUMMARY CONTINUED

### MONTHLY REVISIONS

Each month, the Alaska Department of Labor's Research and Analysis Division revises the previous month employment numbers based on the availability of newer or late arriving data. The following tables show the revision changes in Anchorage and Alaska job totals by industry for October.

Most adjustments are relatively minor; however, some changes do occur which are significant. Changes such as these are normally the result of rounding errors, job classification modifications, sample size or modeling issues, or errors within the industry.

#### OCTOBER 2014 REVISIONS, ANCHORAGE

<i>Industry</i>	<i>Preliminary Total</i>	<i>Revised Total</i>	<i>Net Change</i>
Goods Producing	15,400	15,300	-100
Manufacturing	2,300	2,200	-100
Services Providing	143,100	143,200	+100
Trade/Transportation/Utilities	33,600	33,500	-100
Retail Trade	18,100	18,000	-100
Education & Health Services	24,800	25,000	+200
Leisure & Hospitality	16,800	16,700	-100
Government	29,600	29,700	+100
Federal Government	8,300	8,400	+100

#### OCTOBER 2014 REVISIONS, ALASKA

<i>Industry</i>	<i>Preliminary Total</i>	<i>Revised Total</i>	<i>Net Change</i>
Total Nonfarm	330,500	329,900	-600
Mining & Logging	18,500	18,800	+300
Mining	18,100	18,400	+300
Oil & Gas	14,900	15,100	+200
Construction	17,400	17,300	-100
Manufacturing	12,200	12,000	-200
Seafood Processing	8,200	8,100	-100
Services Providing	282,400	281,800	-600
Trade/Transportation/Utilities	64,300	64,100	-200
Retail Trade	37,300	37,000	-300
Food & Beverage Stores	6,500	6,600	+100
General Merchandise Stores	10,700	10,500	-200
Trade, Warehouse, Utilities	20,600	20,700	+100
Professional & Business Services	30,000	30,100	+100
Education & Health Services	46,500	46,400	-100
Health Care	33,200	33,300	+100
Leisure & Hospitality	29,500	29,300	-200
Food Services & Drinking Places	19,400	19,200	-200
Government	82,700	82,500	-200
State Government	8,500	8,400	-100
Local Government	41,700	41,600	-100
Local Education	23,800	23,900	+100

## GOODS PRODUCING JOBS

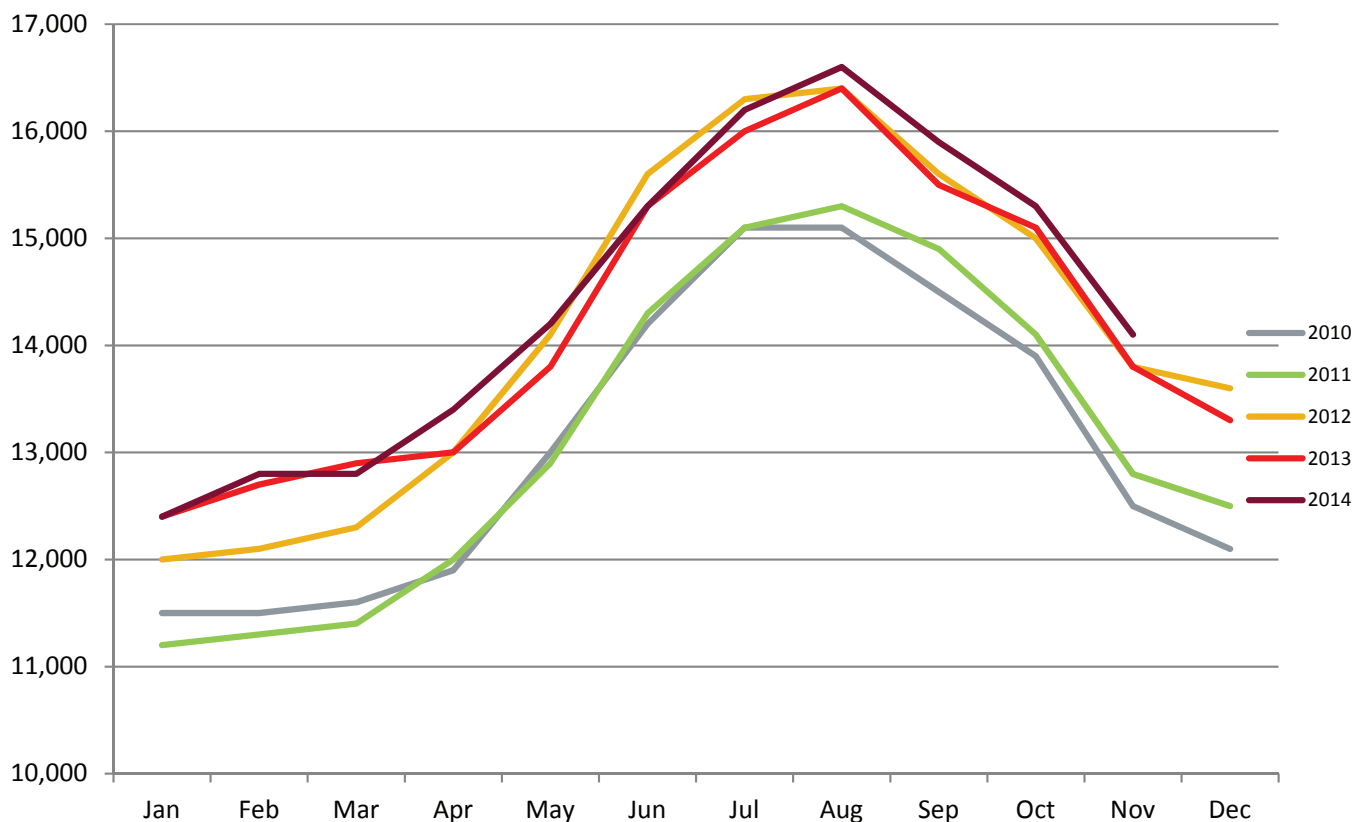
### CONSTRUCTION WORK, MINING, OIL & GAS PRODUCTION, MANUFACTURING

Growth in the number of goods producing jobs (those jobs that are specifically tied to production, not those which support the production or maintenance of the production jobs) peaked in August and is now into its annual decline into next January. However, on an YTD basis, the industry is showing positive gains of 191 jobs. November's total of 14,100 is 300 jobs more than November 2013. An increase of 155 jobs in the mining & logging industry (which includes oil & gas employment) has been the largest contributing factor of the year's gains. YTD construction employment growth has also continued to grow and is now 109 jobs higher than 2013 YTD.

The oil & gas sector has gained 136 jobs so far this year, with an extraordinary growth rate of 3.98 percent. As noted in AEDC's 2014 Resource Extraction Report, the increasingly stable tax and regulatory environment in Alaska is providing cautious optimism for continuing development of established fields, which we hope will translate into more long term jobs for the industry. While many multinational resource developers have announced cost cutting measures and scaled back development plans for 2015, it is still to be seen how Alaskan projects will fare. Many North Slope and Cook Inlet projects, such as Nabors' Mustang field, are well into their development schedules and appear to be moving forward unabated.

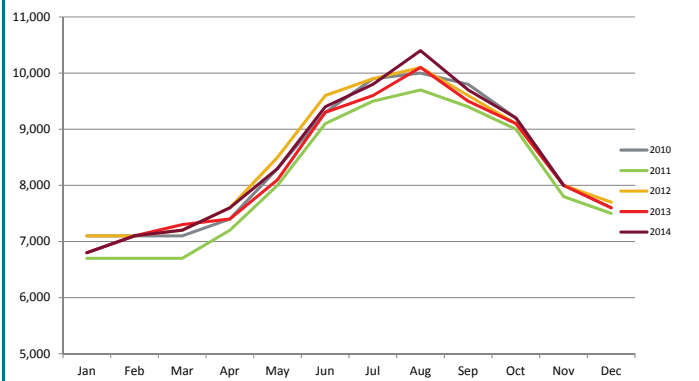
The construction industry, as noted earlier, is maintaining its YTD job growth over the 2013 YTD total. November's monthly estimate of 8,000 is at the same level as November 2013 while showing an YTD growth rate of 1.3 percent over 2013 YTD. The monthly job totals are following an expected decline for the winter months, with December's estimate at around 7,700. The annual ebb and flow of construction employment is remarkably stable year after year. 2014 did, however, see the highest monthly level of employment since 2008 (10,400 in August).

#### GOODS PRODUCING JOBS Municipality of Anchorage 2010-Present

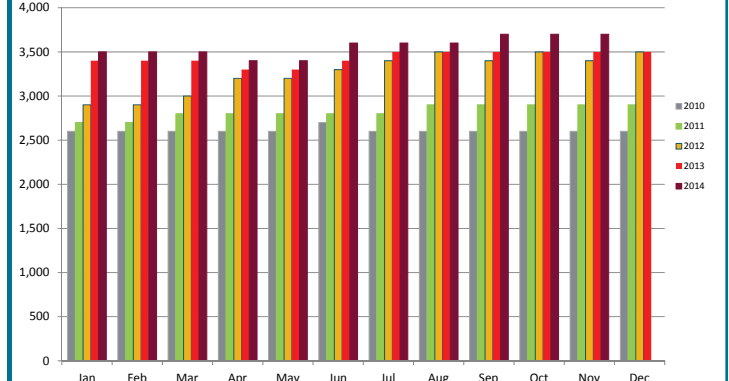


## GOODS PRODUCING JOBS CONTINUED

### CONSTRUCTION EMPLOYMENT Municipality of Anchorage 2010-Present



### OIL & GAS EMPLOYMENT Municipality of Anchorage 2010-Present



## SERVICES PROVIDING JOBS

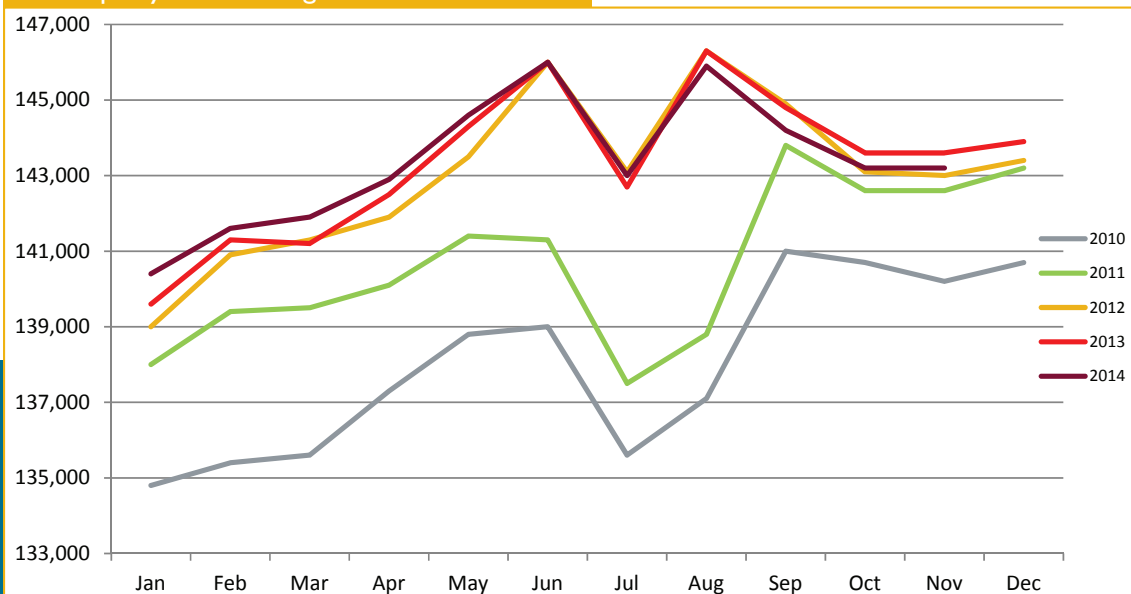
### ENGINEERING, RETAIL, TOURISM, HEALTH CARE, ETC.

Services providing jobs in Anchorage totaled 143,200 for November. Overall, the YTD average is up 91 jobs from 2013 YTD.

**The information industry's growth rate is 1.65 percent so far this year, and is maintaining its position as the highest growth area in the service sector.** The annual employment average in this industry is expected to end the year just under 4,000. The information industry is still on track to end the year with more percentage growth than any year since 2010. **Retail trade jobs are still growing strong, adding 555 positions YTD compared to 2013 YTD, by far the largest numerical growth of any sector.** The sizable increase in the retail sector is the main reason why the trade/transportation/utilities industry is showing significant increases, with the YTD job growth rate at 1.10 percent.

The state government jobs monthly average is up 45 jobs YTD from 2013 due to YTD growth of 73 in state education positions. Federal and local government sectors are both averaging less than this point last year (-291 federal and -255 local). The November 2014 job numbers for local government total is slightly lower than November 2013 (-100). Continued uncertainty in the State's revenue picture in the near future make it unlikely that there will be a significant increase in state government jobs, and a similar outlook holds at the local level as well.

### SERVICES PROVIDING JOBS Municipality of Anchorage 2010-Present



## HEALTH CARE EMPLOYMENT

Employment in the health care sector is still doing well, with 255 more jobs over 2013 YTD. The 1.4 percent YTD job growth in the local health care sector is nearly twice the 2013 end of year rate, and is still one of the fastest growing service producing industries. We are confident that this sector will meet AEDC's 2014 Economic Forecast projection of 250 additional health care jobs by the end of the year.

## TRANSPORTATION

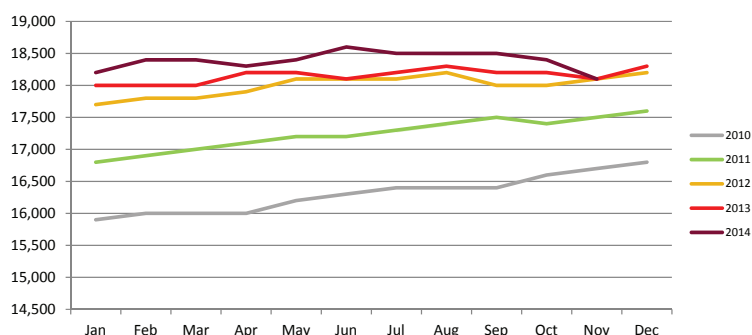
Monthly estimates in the Transportation/Warehouse/Utilities sector (a sub-group of the Trade/Transportation/Utilities industry) continue to lag behind 2013, with the November estimate of 10,600 jobs being 300 lower than November 2013. The YTD average for 2014 is down by 200 over last year and is at its lowest level since 2010. YTD increases in cargo transit tonnage through the Ted Stevens Anchorage International Airport and the Alaska Railroad provide some optimism. The Bureau of Labor Statistics Quarterly Census of Employment and Wages (QCEW) for quarter two of 2014 indicate that the monthly estimates may be revised downward in early 2015. The current YTD average is 10,955, down more than 4,000 jobs from the high water mark set in 2008.

## PROFESSIONAL & BUSINESS SERVICES

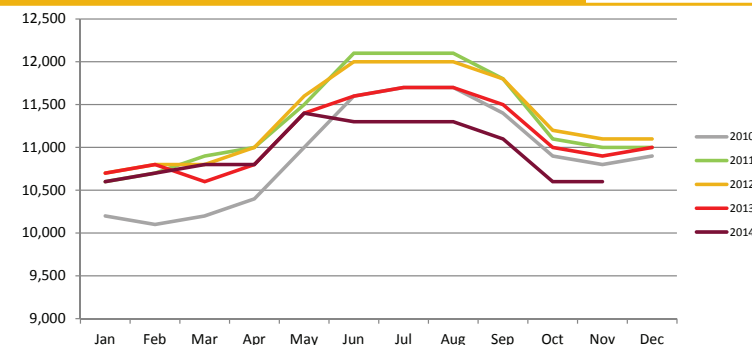
ENGINEERING, ARCHITECTURE, LEGAL SERVICES, ACCOUNTING, SCIENTIFIC RESEARCH, WASTE MANAGEMENT & ADMINISTRATIVE SERVICES

This sector experienced a slight increase in monthly job totals for the first half of 2014, however, after a significant decline in September, the YTD average has been dropping monthly and is now on the negative side for the first time this year. This has been an unexpected turn of events, as this industry had continuously had one of the best growth rates each month in 2014 and September's preliminary figures were very positive. The revised total for September 2014 came back with 600 fewer jobs than initially reported. October was even lower, dropping another 400 jobs. The unadjusted November total is 20,500; 400 jobs less than November of 2013. The 2014 Q2 QCEW data also indicates lower than reported levels of employment and may suggest further downward revisions at a later date.

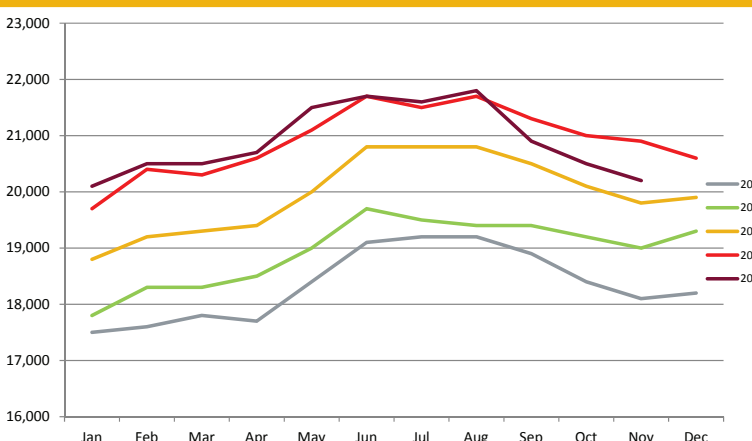
**HEALTH CARE EMPLOYMENT**  
Municipality of Anchorage 2010-Present



**TRANSPORTATION EMPLOYMENT**  
Municipality of Anchorage 2010-Present

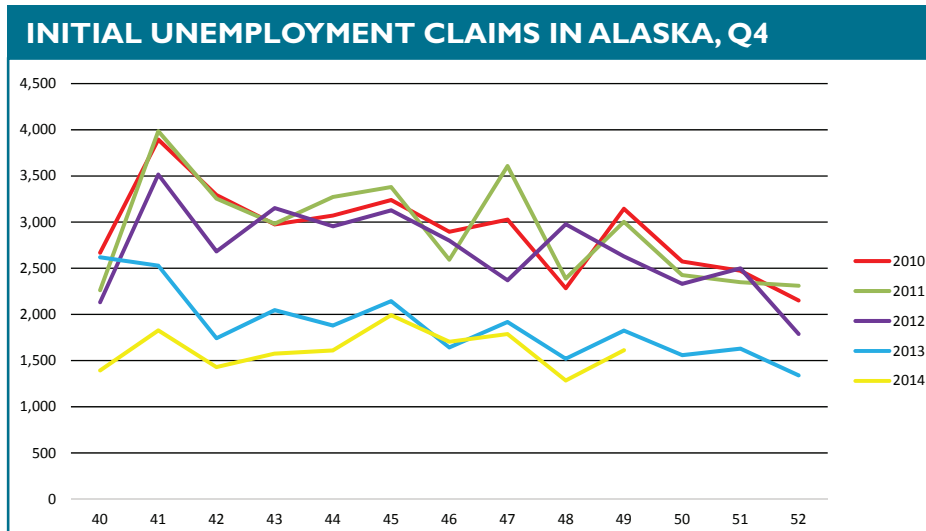


**PROFESSIONAL & BUSINESS SERVICES EMPLOYMENT**  
Municipality of Anchorage 2010-Present

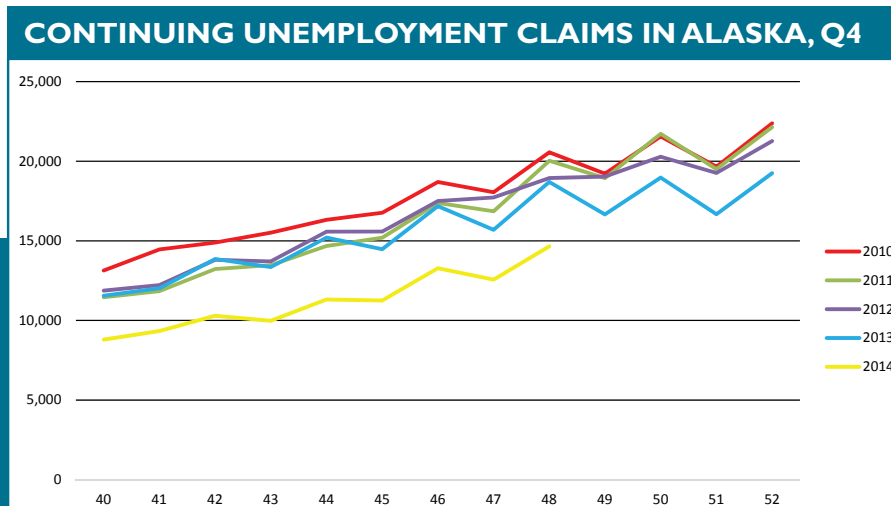


## UNEMPLOYMENT CLAIMS

Initial unemployment claim applications can be interpreted as a proxy for layoffs. They tend to fall as job growth accelerates. Weekly totals for 2014 have been well below recent trends, and November numbers have continued this movement. The typical spike in initial claims at the end of each quarter was far smaller this year than in recent years and this has continued to be the case for the beginning of the fourth quarter. **Since 2009, the weekly average in November has been 2,532. In 2014, November's weekly average was 1,676. Alaska businesses are still retaining workers at a very high level, as they have all year.** Job retention seems to be holding steady throughout the state, which is also being reflected in the ongoing drop in the state's unemployment rate.



Continuing claims figures help to show how well unemployed workers are re-entering the workforce. This total does not include workers receiving extended benefits from the federal government. The 2014 numbers, similar to initial claims' figures, are showing significantly low levels. The total for the final week of November was 14,655. The insured unemployment rate, which is the number of continuing claims divided by the total pool of covered workers, ended November at 4.0. In contrast, this rate began the year at 6.17. Typically, claims fluctuate considerably each week during the last quarter, then begin to drop in the spring. Low fourth quarter claims totals are a good sign of a stable employment environment for the foreseeable future.



All data referenced in this employment report is from the State of Alaska, Dept. of Labor & Workforce Development website: [www.laborstats.alaska.gov](http://www.laborstats.alaska.gov) and from the U.S. Bureau of Labor Statistics: [www.bls.gov](http://www.bls.gov).

**Report compiled by Anchorage Economic Development Corp. Research Department.**

If you are interested in learning more about this data or are interested in how AEDC can help you develop a report, call AEDC at 907.258.3700.

AEDC, 510 L Street, Suite 603, Anchorage, AK 99501



# UNEMPLOYMENT ANALYSIS (YTD, 2014)

Anchorage, Mat-Su, Kenai Peninsula Borough

	Jan	Feb	Mar	Apr	May	Jun	Jul	Aug	Sep	Oct	Nov	Dec	14 YTD Avg	13 YTD Avg	14 vs 13 (YTD)
<b>Municipality of Anchorage</b>															
Labor Force	157,114	156,019	156,912	155,578	156,599	157,324	155,570	154,102	154,783	156,697	158,121		156,256	155,448	809
Employment	148,838	147,203	148,385	147,911	149,081	148,563	147,692	145,936	147,244	149,377	150,508		148,249	147,546	703
Unemployment	8,276	8,816	8,527	7,667	7,518	8,761	7,878	8,166	7,539	7,320	7,613		8,007	7,901	106
Unemployment Rate	5.3%	5.7%	5.4%	4.9%	4.8%	5.6%	5.1%	5.3%	4.9%	4.7%	4.8%		5.12%	5.08%	0.04%
<b>Mat-Su Borough</b>															
Labor Force	44,593	44,245	44,485	43,692	43,660	43,935	43,507	42,872	42,925	43,677	44,263		43,805	43,633	172
Employment	40,810	40,362	40,686	40,556	40,877	40,735	40,496	40,015	40,374	40,958	41,268		40,649	40,456	193
Unemployment	3,783	3,883	3,799	3,136	2,783	3,200	3,011	2,857	2,551	2,719	2,995		3,156	3,177	(21)
Unemployment Rate	8.5%	8.8%	8.5%	7.2%	6.4%	7.3%	6.9%	6.7%	5.9%	6.2%	6.8%		7.20%	7.28%	-0.08%
<b>Kenai Peninsula Borough</b>															
Labor Force	27,419	27,434	27,406	27,735	29,221	30,256	30,536	30,043	28,538	28,456	28,328		28,670	28,212	459
Employment	25,022	24,947	24,999	25,645	27,357	28,157	28,630	28,070	26,658	26,538	26,293		26,574	26,112	462
Unemployment	2,397	2,487	2,407	2,090	1,864	2,099	1,906	1,973	1,880	1,918	2,035		2,096	2,099	(3)
Unemployment Rate	8.7%	9.1%	8.8%	7.5%	6.4%	6.9%	6.2%	6.6%	6.6%	6.7%	7.2%		7.31%	7.44%	-0.13%
<b>Southeastern Region</b>															
Labor Force	229,126	227,698	228,803	227,005	229,480	231,515	229,613	227,017	226,246	228,830	230,712		228,731	227,292	1,439
Employment	214,670	212,512	214,070	214,112	217,315	217,455	216,818	214,021	214,276	216,873	218,069		215,472	214,115	1,357
Unemployment	14,456	15,186	14,733	12,893	12,165	14,060	12,795	12,996	11,970	11,957	12,643		13,259	13,177	82
Unemployment Rate	6.3%	6.7%	6.4%	5.7%	5.3%	6.1%	5.6%	5.7%	5.3%	5.2%	5.5%		5.80%	5.80%	0.00%
<b>State of Alaska</b>															
Labor Force	362,147	362,081	363,566	360,434	367,044	373,799	376,645	371,881	367,176	364,190	362,495		366,496	364,518	1,979
Employment	335,399	334,280	336,922	337,253	345,026	348,673	353,787	348,872	345,912	342,626	339,889		342,604	340,657	1,946
Unemployment	26,748	27,801	26,644	23,181	22,018	25,126	22,858	23,009	21,264	21,564	22,606		23,893	23,860	32
Unemployment Rate	7.4%	7.7%	7.3%	6.4%	6.0%	6.7%	6.1%	6.2%	5.8%	5.9%	6.2%		6.52%	6.55%	-0.03%

**\*Note:** These numbers reflect employment, unemployment, etc. for only those people that are residence of the specified City/Region, thus are not inclusive of people who commute to another city for their jobs. (Ex: Someone lives in Wasilla but works in Anchorage. They would be counted in the Mat-Su Borough's labor force and employment numbers, not the Municipality of Anchorage numbers)



# INDUSTRY EMPLOYMENT ESTIMATES 2014

## Municipality of Anchorage

Industry	Jan	Feb	Mar	Apr	May	Jun	Jul	Aug	Sep	Oct	Nov	Dec	2014 YTD Avg.	2013 YTD Avg.	2014 vs 2013 YTD Change	% Change
Total Nonfarm	152,800	154,300	154,700	156,300	158,800	161,300	159,100	162,500	160,200	158,500	157,300		157,800	157,509	291	0.18%
Goods Producing	12,400	12,800	12,800	13,400	14,200	15,300	16,200	16,600	15,900	15,300	14,100		14,455	14,264	191	1.34%
Services Providing	140,400	141,600	141,900	142,900	144,600	146,000	143,000	145,900	143,200	143,200	143,200		143,355	143,264	91	0.06%
Mining and Logging <sup>2</sup>	3,700	3,700	3,600	3,600	3,600	3,800	3,800	3,800	3,900	3,900	3,900		3,755	3,600	155	4.29%
Oil & Gas	3,500	3,500	3,500	3,400	3,400	3,600	3,600	3,600	3,700	3,700	3,700		3,564	3,427	136	3.98%
Construction	6,800	7,100	7,200	7,600	8,300	9,400	9,800	10,400	9,700	9,200	8,000		8,500	8,391	109	1.30%
Manufacturing	1,900	2,000	2,000	2,100	2,300	2,100	2,500	2,400	2,300	2,200	2,100		2,173	2,236	-64	-2.85%
Trade/Transportation/Utilities	32,300	32,200	32,300	33,000	34,100	34,300	34,600	34,600	34,100	33,500	33,700		33,518	33,155	364	1.10%
Wholesale Trade	4,700	4,700	4,800	4,900	5,000	5,100	5,200	5,100	5,000	4,900	4,800		4,927	4,918	9	0.18%
Retail Trade	17,000	16,800	16,800	17,300	17,700	17,900	18,100	18,100	18,000	18,000	18,200		17,627	17,073	555	3.25%
Trans/Warehouse/Utilities	10,600	10,700	10,800	10,800	11,400	11,300	11,300	11,300	11,100	10,600	10,600		10,955	11,155	-200	-1.79%
Information	3,900	3,900	3,900	3,900	3,900	3,900	4,000	3,900	4,000	3,900	4,000		3,927	3,864	64	1.65%
Financial Activities	7,500	7,500	7,400	7,500	7,500	7,700	7,700	7,500	7,600	7,600	7,500		7,545	7,582	-36	-0.48%
Professional & Business Svcs	20,100	20,500	20,500	20,700	21,500	21,700	21,600	21,800	20,900	20,500	20,200		20,909	20,927	-18	-0.09%
Educational & Health Services	24,900	25,200	25,200	25,200	25,300	25,000	25,100	25,100	25,000	25,000	24,900		25,082	24,982	100	0.40%
Health Care	18,200	18,400	18,400	18,300	18,400	18,600	18,500	18,500	18,500	18,400	18,100		18,391	18,136	255	1.40%
Leisure & Hospitality	16,300	16,500	16,800	16,800	17,000	17,800	18,000	18,000	17,000	16,700	16,700		17,055	16,945	109	0.64%
Accommodation	3,100	3,100	3,200	3,100	3,100	3,300	3,300	3,300	3,100	3,100	3,200		3,173	3,218	-45	-1.41%
Food Svcs & Drinking Places	11,100	11,100	11,300	11,400	11,600	12,100	12,100	12,100	11,400	11,200	11,100		11,500	11,382	118	1.04%
Other Services	5,900	6,000	6,000	6,000	6,000	6,200	6,200	6,100	6,200	6,300	6,100		6,091	6,018	73	1.21%
Government	29,500	29,800	29,700	29,900	29,300	29,400	25,800	29,000	29,500	29,700	30,100		29,245	29,755	-509	-1.71%
Federal Government	8,500	8,500	8,400	8,400	8,500	8,500	8,500	8,400	8,400	8,400	8,400		8,445	8,736	-291	-3.33%
State Government	10,800	10,900	10,900	11,000	10,500	10,500	10,200	10,400	11,100	11,100	11,300		10,791	10,745	45	0.42%
State Education	2,800	3,000	3,000	3,000	2,400	2,100	2,000	2,200	2,800	2,900	2,900		2,645	2,573	73	2.83%
Local Government	10,200	10,400	10,400	10,500	10,400	10,400	7,100	10,200	10,100	10,200	10,400		10,027	10,282	-255	-2.48%
Local Education	7,400	7,600	7,500	7,700	7,600	7,500	4,200	7,400	7,300	7,500	7,600		7,209	7,491	-282	-3.76%

- Nonfarm Wage & Salary excludes self-employed workers, fishers, domestics, and unpaid family workers.

- All totals are seasonally non-adjusted totals.

- Government includes employees of public school systems and the University of Alaska.

- Beginning January 2001, wage and salary employment estimates were published under a new classification system. The Standard Industrial Classification system (SIC) has been replaced by the North American Industry Classification System (NAICS). Data prior to 2001 are comparable only at the Total Nonfarm and Government levels.

<sup>1/</sup> As of January 2001, certain federally-recognized tribal entities were moved to Local Government, which created a series break for Total Government and Local Government. Please see the April 2002 Alaska Economic Trends publication for a detailed explanation.

<sup>2/</sup> This category was called "Natural Resources and Mining" in previous years. The change is in name only; the industries it includes remain the same.

- Some totals may not equal components due to rounding.

- Source: Alaska Department of Labor and Workforce Development, Research and Analysis Section

\* **Note:** The above numbers are representative of all people employed in the Municipality of Anchorage, this is inclusive of workers who claim residence outside of the Municipality of Anchorage. (Ex: someone who lives in the Mat-Su, but works in Anchorage would be included in these number)

### Quick Comparisons

14 vs 13	0	0.00%
November		
14 vs 13	567	0.37%
1st Qtr		
14 vs 13	500	0.32%
2nd Qtr		
14 vs 13	33	0.02%
3rd Qtr		
14 vs 13	-50	-0.03%
4th Qtr		

# INDUSTRY EMPLOYMENT ESTIMATES 2014

State of Alaska

Industry	Jan	Feb	Mar	Apr	May	Jun	Jul	Aug	Sep	Oct	Nov	Dec	2014 YTD Avg.	2013 YTD Avg.	2014 vs 2013 YTD Change	% Change
Total Nonfarm	317,300	322,300	325,500	329,000	338,700	353,500	359,000	357,200	348,800	329,900	323,500		336,791	337,209	-418	-0.12%
Goods Producing	43,600	45,500	46,100	46,400	47,600	56,100	65,600	62,500	55,700	48,100	43,900		51,009	49,200	1,809	3.68%
Services Providing	273,700	276,800	279,400	282,600	291,100	297,400	293,400	294,700	293,100	281,800	279,600		285,782	288,009	-2,227	-0.77%
Mining and Logging <sup>2</sup>	17,000	17,200	17,500	17,900	18,300	19,000	19,400	19,400	19,100	18,800	18,400		18,364	17,491	873	4.99%
Mining	16,900	17,000	17,200	17,400	17,700	18,400	18,700	18,800	18,600	18,400	18,000		17,918	17,236	682	3.96%
Oil & Gas	14,200	14,200	14,300	14,400	14,500	14,800	15,000	15,100	14,900	15,100	15,000		14,682	14,127	555	3.93%
Construction	14,400	14,400	14,400	15,100	16,400	18,000	18,800	19,600	18,600	17,300	15,700		16,591	16,727	-136	-0.82%
Manufacturing	12,200	14,100	14,200	13,400	12,900	19,100	27,400	23,500	18,000	12,000	9,800		16,055	14,982	1,073	7.16%
Seafood Processing	8,700	10,500	10,600	9,800	8,600	14,600	22,400	18,700	13,300	8,100	5,900		11,927	11,245	682	6.06%
Trade/Transportation/Utilities	60,500	60,800	61,300	62,800	68,100	70,100	71,000	70,900	67,800	64,100	63,700		65,555	64,127	1,427	2.23%
Wholesale Trade	6,300	6,400	6,400	6,500	6,600	6,700	6,800	6,700	6,600	6,400	6,300		6,518	6,582	-64	-0.97%
Retail Trade	35,100	34,900	35,200	36,000	37,900	39,200	39,600	39,400	37,700	37,000	37,200		37,200	35,909	1,291	3.59%
Food & Beverage Stores	6,200	6,400	6,400	6,400	6,700	7,000	7,300	7,300	7,000	6,600	6,600		6,718	6,164	555	9.00%
General Merchandise Stores	9,900	9,700	9,700	9,900	10,200	10,600	10,800	10,700	10,600	10,500	10,600		10,291	9,845	445	4.52%
Trans/Warehouse/Utilities	19,100	19,500	19,700	20,300	23,600	24,200	24,600	24,800	23,500	20,700	20,200		21,836	21,636	200	0.92%
Air Transportation	5,500	5,500	5,700	5,800	6,500	6,800	6,900	6,900	6,600	6,200	6,000		6,218	5,891	327	5.56%
Information	6,200	6,200	6,200	6,100	6,200	6,300	6,200	6,100	6,200	6,100	6,100		6,173	6,155	18	0.30%
Telecommunications	4,100	4,100	4,100	4,100	4,100	4,100	4,100	4,000	4,000	4,000	4,000		4,064	4,064	0	0.00%
Financial Activities	11,800	11,700	11,600	11,600	11,700	12,200	12,500	12,300	11,800	11,700	11,800		11,882	12,200	-318	-2.61%
Professional & Business Svcs	28,200	28,100	28,600	29,200	30,000	30,900	31,000	31,500	31,300	30,100	29,500		29,855	30,173	-318	-1.05%
Educational & Health Services	47,100	47,500	47,600	47,200	47,100	46,300	46,000	46,500	46,800	46,400	46,800		46,845	47,136	-291	-0.62%
Health Care	33,600	33,700	33,900	33,500	33,600	33,900	33,700	33,900	33,500	33,300	33,500		33,645	33,564	82	0.24%
Leisure & Hospitality	28,500	28,600	29,900	30,600	33,300	37,800	38,600	38,500	35,500	29,300	28,100		32,609	33,855	-1,245	-3.68%
Accommodation	6,100	5,900	6,000	6,200	7,100	9,100	9,600	9,600	8,300	6,100	5,800		7,255	8,318	-1,064	-12.79%
Food Svcs & Drinking Places	18,500	18,600	19,500	19,900	21,300	23,100	23,100	23,200	22,100	19,200	18,500		20,636	20,673	-36	-0.18%
Other Services	11,400	11,100	11,300	11,400	11,500	11,500	11,700	11,500	11,600	11,600	11,500		11,464	11,727	-264	-2.25%
Government	80,000	82,800	82,900	83,700	83,200	82,300	76,400	77,400	82,100	82,500	82,100		81,400	82,636	-1,236	-1.50%
Federal Government	14,500	14,500	14,600	14,900	15,200	15,500	15,500	15,300	15,100	14,500	14,300		14,900	15,509	-609	-3.93%
State Government	24,700	26,600	26,800	27,000	26,100	25,300	24,700	25,200	26,400	26,400	26,200		25,945	26,264	-318	-1.21%
State Education	6,600	8,600	8,600	8,700	7,600	6,200	6,000	6,500	8,200	8,400	8,600		7,636	7,745	-109	-1.41%
Local Government	40,800	41,700	41,500	41,800	41,900	41,500	36,200	36,900	40,600	41,600	41,600		40,555	40,864	-309	-0.76%
Local Education	22,900	23,800	23,600	23,900	23,500	22,300	17,100	18,300	22,900	23,900	24,200		22,400	22,718	-318	-1.40%
Tribal Government <sup>1</sup>	3,600	3,500	3,500	3,500	3,900	4,200	4,400	4,500	4,200	4,000	3,900		3,927	3,636	291	8.00%

- Nonfarm Wage & Salary excludes self-employed workers, fishers, domestics, and unpaid family workers.

- All totals are non-seasonally adjusted totals.

- Government includes employees of public school systems and the University of Alaska.

- Beginning January 2001, wage and salary employment estimates were published under a new classification system. The Standard Industrial Classification system (SIC) has been replaced by the North American Industry Classification System (NAICS). Data prior to 2001 are comparable only at the Total Nonfarm and Government levels.

1/ As of January 2001, certain federally-recognized tribal entities were moved to Local Government, which created a series break for Total Government and Local Government. Please see the April 2002 Alaska Economic Trends publication for a detailed explanation.

2/ This category was called "Natural Resources and Mining" in previous years. The change is in name only; the industries it includes remain the same.

- Totals may not equal sub-sections due to rounding.

- Source: Alaska Department of Labor and Workforce Development, Research and Analysis Section

Quick Comparisons	
14 vs 13 Nov.	-1,000 -0.30%
14 vs 13 1st Qtr	1,600 0.50%
14 vs 13 2nd Qtr	-300 -0.09%
14 vs 13 3rd Qtr	-1,500 -0.42%
14 vs 13 4th Qtr	-2,000 -0.61%

## Press Release

## COMMISSIONER'S OFFICE

December 19, 2014

No. 14-48

### Unemployment rate at 6.6 percent in November

Alaska's seasonally adjusted unemployment rate was 6.6 percent in November, down slightly from October's 6.7 percent. The comparable national rate was 5.8 percent.

The seasonally adjusted jobless rate has remained relatively stable in Alaska for the past two years. The national rate has continued to decline, and it's not yet clear when it will stabilize. In the 10 years before the most recent national recession, Alaska's rate was usually about 2 percentage points higher than the national level.

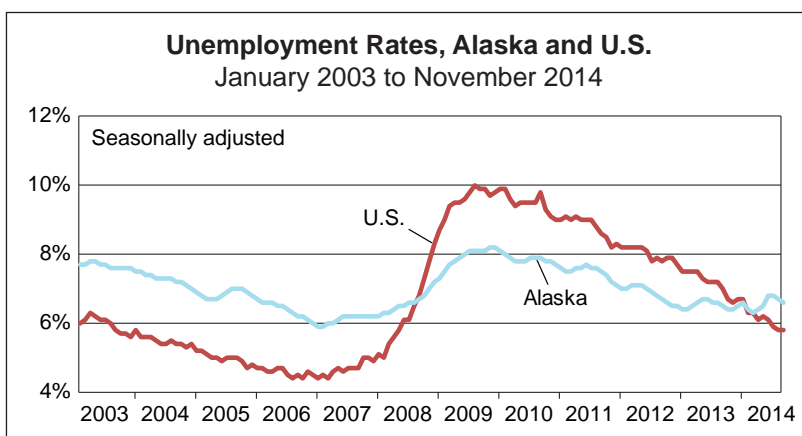
Alaska's not-seasonally adjusted unemployment rate was 6.2 percent in November, up three-tenths of a percentage point from October's 5.9 percent. November's rate was essentially the same as the prior year's 6.3 percent.

Around the state, jobless rates increased in 24 out of 29 boroughs and census areas, typical for November. The lowest rate was in the North Slope Borough, where winter construction bucks the normal statewide seasonal trend. Anchorage and Juneau also had low rates, at 4.8 and 4.7 percent, respectively. The highest unemployment rate was in the Municipality of Skagway at 19.2 percent, narrowly edging out Wade Hampton Census Area at 19.0 percent.

### Volatility in monthly job estimates

The Bureau of Labor Statistics estimates Alaska's employment using a survey of about 1,200 employers each month, or about 5 percent of all employers. The estimates are generally imprecise and require significant revisions at the end of each year during the benchmarking process, when the monthly estimates are reconciled to final employment levels.

The first graph on the next page shows the difference between the preliminary estimate and the benchmark revisions for the previous two



#### Unemployment Rates, Seasonally Adjusted

	11/14	10/14	11/13
Alaska	6.6%	6.7%	6.5%
U.S.	5.8%	5.9%	7.0%

Sources for graph and table: Alaska Department of Labor and Workforce Development, Research and Analysis Section; and U.S. Bureau of Labor Statistics

For detailed employment estimates, see <http://live.laborstats.alaska.gov/ces/>. The estimates are preliminary and subject to potentially large revisions.

years. Although the basic seasonal pattern of the preliminary estimate is correct, over-the-year comparisons are often misleading. Further, estimates at the industry level are especially volatile. One example is the construction industry, shown in the second graph on the next page.

According to the November estimates, total nonfarm employment fell by 6,400 jobs from October, a normal seasonal decline. Compared to the previous year, November's level was down by 1,000 jobs, or -0.3 percent.

Growth in oil and gas, retail trade, and

transportation, warehousing, and utilities will likely be revised down. The dramatic over-the-year loss of 1,200 jobs in leisure and hospitality is likely overstated, given industry trends.

The estimates show significant losses in government employment, which is directionally correct but also likely exaggerated in magnitude.

Alaska's employment was most likely flat or down slightly compared to November 2013. For more information on employment in Alaska's regions, see <http://live.laborstats.alaska.gov/ces>.

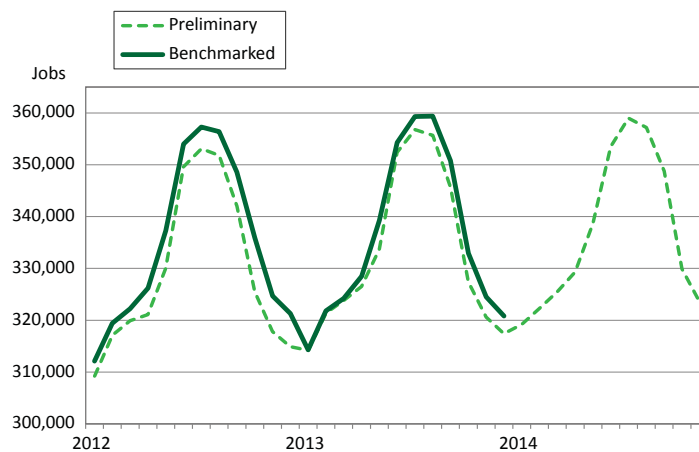
**Contact: Caroline Schultz, Economist (907) 465-6027**  
Research and Analysis Web site: [laborstats.alaska.gov](http://laborstats.alaska.gov)

## Alaska Nonfarm Employment

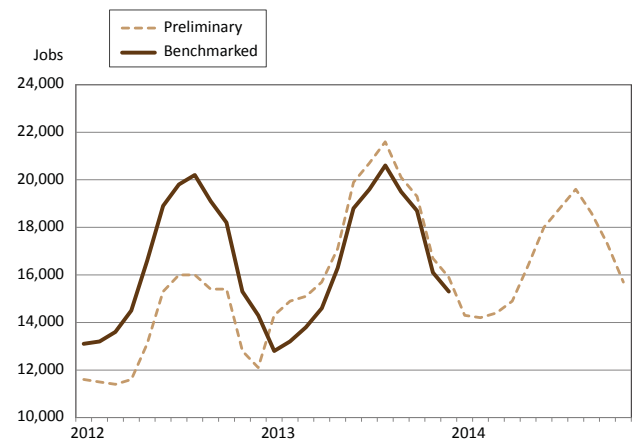
ALASKA	11/14	10/14	11/13	Change from 11/13
<b>Total Nonfarm</b>	<b>323,500</b>	<b>329,900</b>	<b>324,500</b>	<b>-1,000</b>
<b>Total Private</b>	<b>241,400</b>	<b>247,400</b>	<b>241,300</b>	<b>100</b>
Mining and Logging	18,400	18,800	17,400	1,000
Oil, Gas Extr Drilling	15,000	15,100	14,200	800
Construction	15,700	17,300	16,100	-400
Manufacturing	9,800	12,000	10,100	-300
Wholesale Trade	6,300	6,400	6,300	0
Retail Trade	37,200	37,000	36,100	1,100
Trans, Warehouse, Util	20,200	20,700	19,700	500
Information	6,100	6,100	6,300	-200
Financial Activities	11,800	11,700	11,900	-100
Prof and Business Svcs	29,500	30,100	29,200	300
Educational and Health	46,800	46,400	47,300	-500
Health Care	33,500	33,300	33,600	-100
Leisure and Hospitality	28,100	29,300	29,300	-1,200
Other Services	11,500	11,600	11,600	-100
<b>Government</b>	<b>82,100</b>	<b>82,500</b>	<b>83,200</b>	<b>-1,100</b>
Federal Government	14,300	14,500	14,600	-300
State Government	26,200	26,400	26,700	-500
Local Government	41,600	41,600	41,900	-300

Sources for table and graphs: Alaska Department of Labor and Workforce Development, Research and Analysis Section; and U.S. Bureau of Labor Statistics

## Total Jobs: Preliminary vs. Benchmarked



## Construction: Preliminary vs. Benchmarked



## Labor Force by Borough and Census Area, Not Seasonally Adjusted<sup>1</sup>

	Civilian Labor Force			Unemployed					
	11/14 <sup>P</sup>	10/14	11/13	Number			Rate		
				11/14 <sup>P</sup>	10/14	11/13	11/14 <sup>P</sup>	10/14	11/13
<b>Alaska</b>	<b>362,495</b>	<b>364,190</b>	<b>361,724</b>	<b>22,606</b>	<b>21,564</b>	<b>22,663</b>	<b>6.2</b>	<b>5.9</b>	<b>6.3</b>
<b>Anchorage/Mat-Su Region</b>	<b>202,384</b>	<b>200,374</b>	<b>201,727</b>	<b>10,608</b>	<b>10,039</b>	<b>10,320</b>	<b>5.2</b>	<b>5.0</b>	<b>5.1</b>
Anchorage, Municipality of	158,121	156,697	157,503	7,613	7,320	7,285	4.8	4.7	4.6
Matanuska-Susitna Borough	44,263	43,677	44,224	2,995	2,719	3,035	6.8	6.2	6.9
<b>Gulf Coast Region</b>	<b>39,801</b>	<b>40,359</b>	<b>39,721</b>	<b>2,827</b>	<b>2,625</b>	<b>2,893</b>	<b>7.1</b>	<b>6.5</b>	<b>7.3</b>
Kenai Peninsula Borough	28,328	28,456	27,993	2,035	1,918	2,019	7.2	6.7	7.2
Kodiak Island Borough	6,744	6,879	6,943	353	279	402	5.2	4.1	5.8
Valdez-Cordova Census Area	4,729	5,024	4,785	439	428	472	9.3	8.5	9.9
<b>Interior Region</b>	<b>53,523</b>	<b>54,241</b>	<b>52,793</b>	<b>3,489</b>	<b>3,276</b>	<b>3,446</b>	<b>6.5</b>	<b>6.0</b>	<b>6.5</b>
Denali Borough	694	1,348	714	108	95	128	15.6	7.0	17.9
Fairbanks North Star Borough	46,583	46,621	45,591	2,619	2,452	2,472	5.6	5.3	5.4
Southeast Fairbanks Census Area	3,196	3,245	3,268	334	320	360	10.5	9.9	11.0
Yukon-Koyukuk Census Area	3,050	3,027	3,220	428	409	486	14.0	13.5	15.1
<b>Northern Region</b>	<b>12,887</b>	<b>13,023</b>	<b>13,085</b>	<b>1,067</b>	<b>1,081</b>	<b>1,180</b>	<b>8.3</b>	<b>8.3</b>	<b>9.0</b>
Nome Census Area	4,169	4,327	4,371	425	444	444	10.2	10.3	10.2
North Slope Borough	5,642	5,489	5,558	236	219	266	4.2	4.0	4.8
Northwest Arctic Borough	3,076	3,207	3,156	406	418	470	13.2	13.0	14.9
<b>Southeast Region</b>	<b>37,103</b>	<b>38,289</b>	<b>37,061</b>	<b>2,531</b>	<b>2,352</b>	<b>2,488</b>	<b>6.8</b>	<b>6.1</b>	<b>6.7</b>
Haines Borough	1,082	1,164	1,073	107	95	111	9.9	8.2	10.3
Hoonah-Angoon Census Area	883	1,103	850	158	124	171	17.9	11.2	20.1
Juneau, City and Borough of	17,448	17,609	17,640	826	790	800	4.7	4.5	4.5
Ketchikan Gateway Borough	7,664	7,918	7,587	509	484	479	6.6	6.1	6.3
Petersburg Census Area	1,555	1,598	1,552	148	122	160	9.5	7.6	10.3
Prince of Wales-Hyder Census Area	2,325	2,421	2,275	319	317	291	13.7	13.1	12.8
Sitka, City and Borough of	4,304	4,363	4,267	225	196	230	5.2	4.5	5.4
Skagway, Municipality of	574	732	549	110	104	114	19.2	14.2	20.8
Wrangell, City and Borough of	1,023	1,057	1,009	107	96	103	10.5	9.1	10.2
Yakutat, City and Borough of	245	324	259	22	24	29	9.0	7.4	11.2
<b>Southwest Region</b>	<b>16,800</b>	<b>17,902</b>	<b>17,337</b>	<b>2,088</b>	<b>2,190</b>	<b>2,337</b>	<b>12.4</b>	<b>12.2</b>	<b>13.5</b>
Aleutians East Borough	917	1,175	937	94	93	139	10.3	7.9	14.8
Aleutians West Census Area	2,535	2,817	2,784	194	228	301	7.7	8.1	10.8
Bethel Census Area	7,213	7,539	7,368	970	1,022	1,023	13.4	13.6	13.9
Bristol Bay Borough	505	558	554	34	33	41	6.7	5.9	7.4
Dillingham Census Area	1,784	1,866	1,820	179	186	193	10.0	10.0	10.6
Lake and Peninsula Borough	1,000	1,107	964	75	77	75	7.5	7.0	7.8
Wade Hampton Census Area	2,846	2,840	2,910	542	551	565	19.0	19.4	19.4

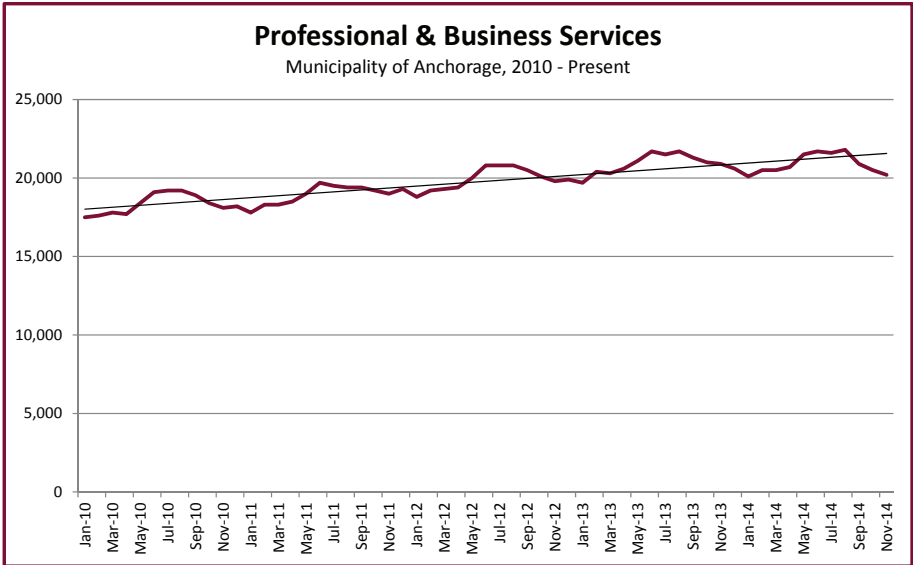
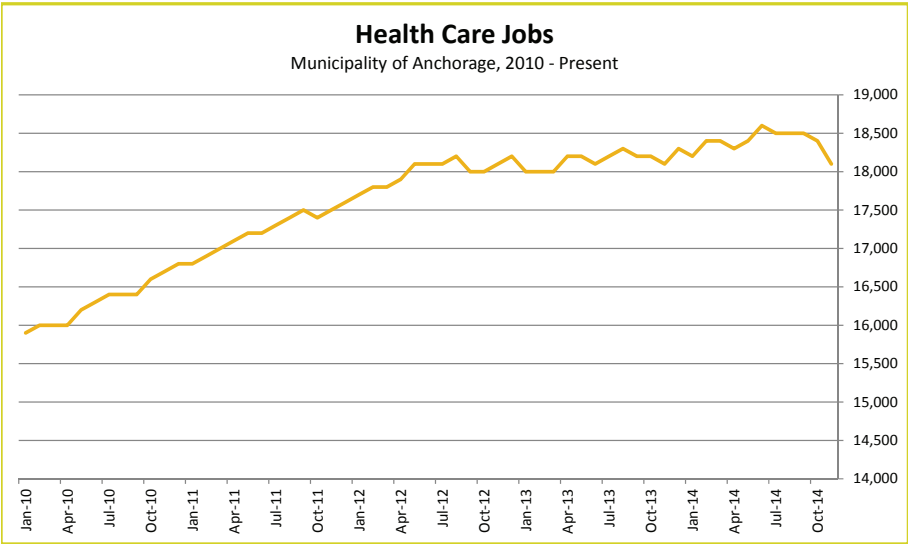
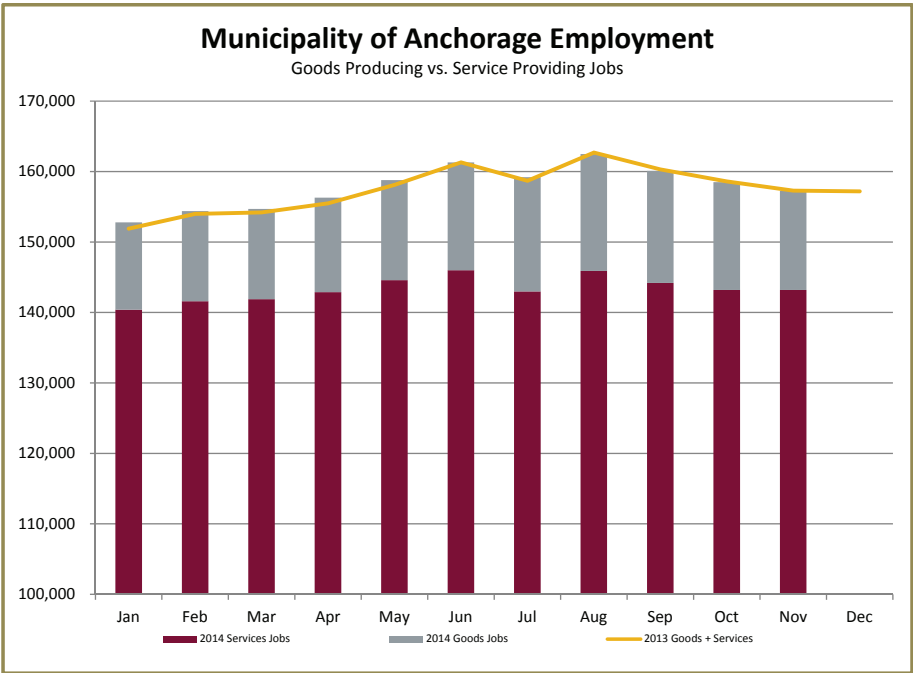
P = Preliminary. As more information becomes available, data are revised every month for the previous month and again at the end of every calendar year.

Note: The official definition of unemployment excludes anyone who has not made an active attempt to find work in the four-week period up to and including the week that includes the 12th of the reference month. Many in rural Alaska do not meet the definition because they have not conducted an active job search due to the scarcity of employment opportunities.

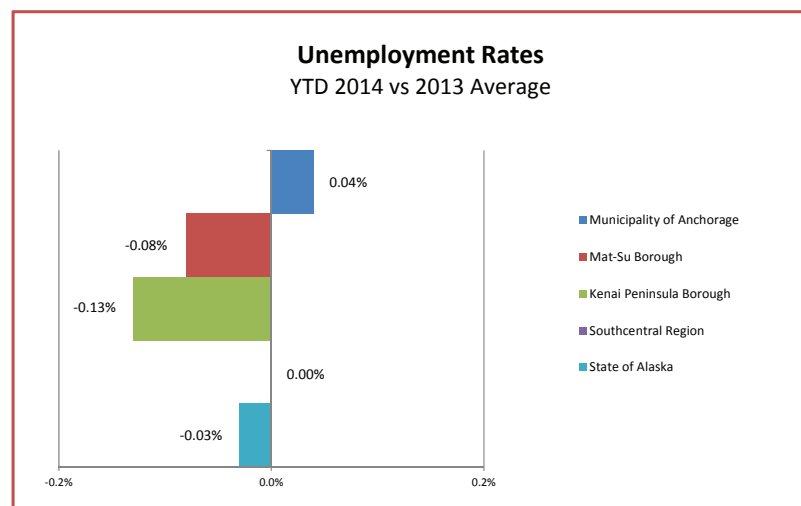
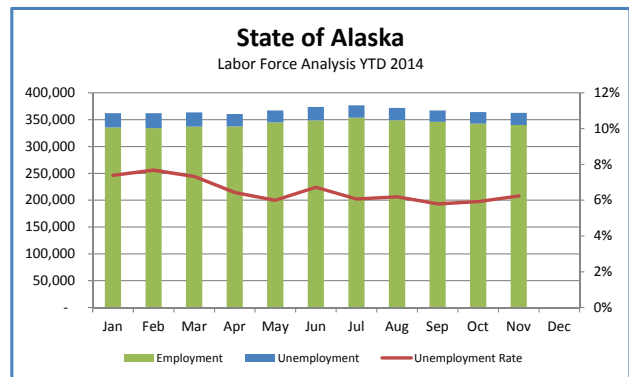
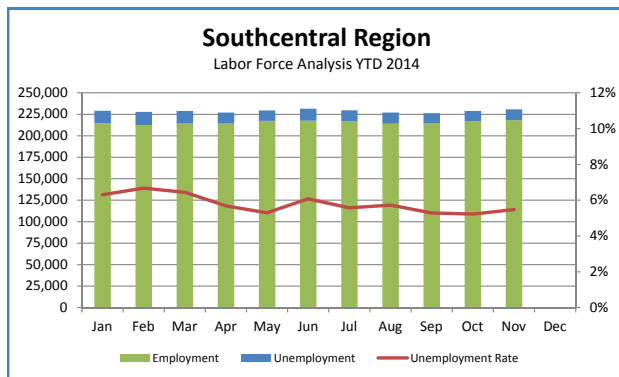
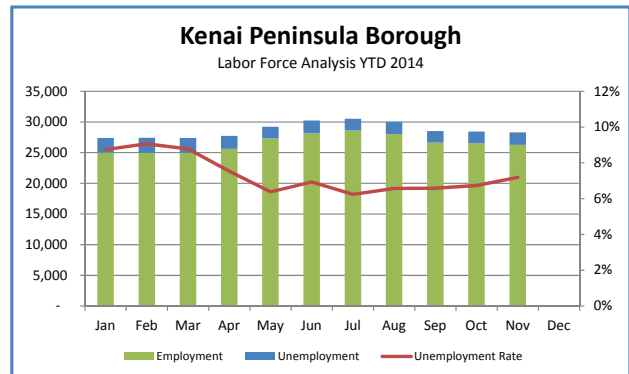
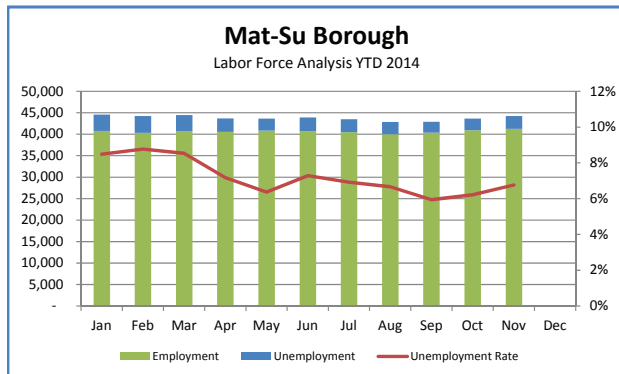
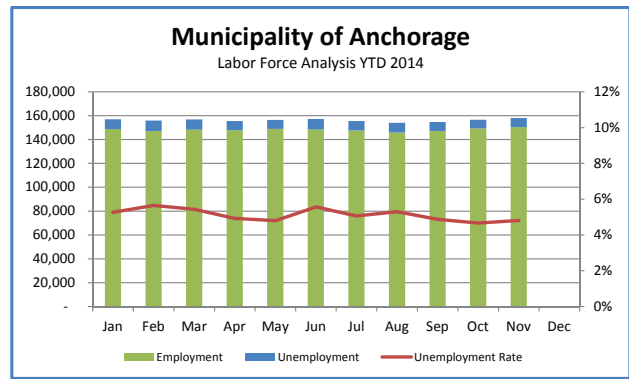
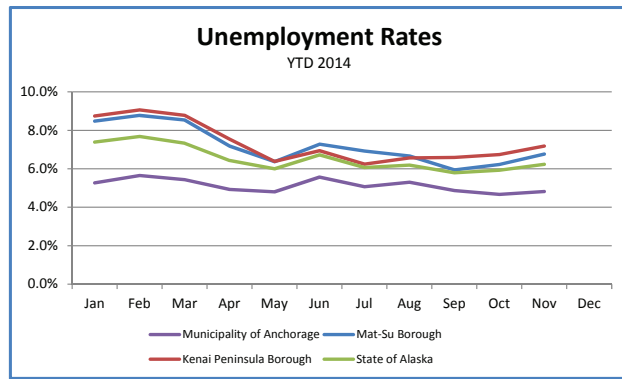
<sup>1</sup>Unemployment rates that are not seasonally adjusted should not be compared with those that are.

Source: Alaska Department of Labor and Workforce Development, Research and Analysis Section; and U.S. Bureau of Labor Statistics

ADDITIONAL CHARTS



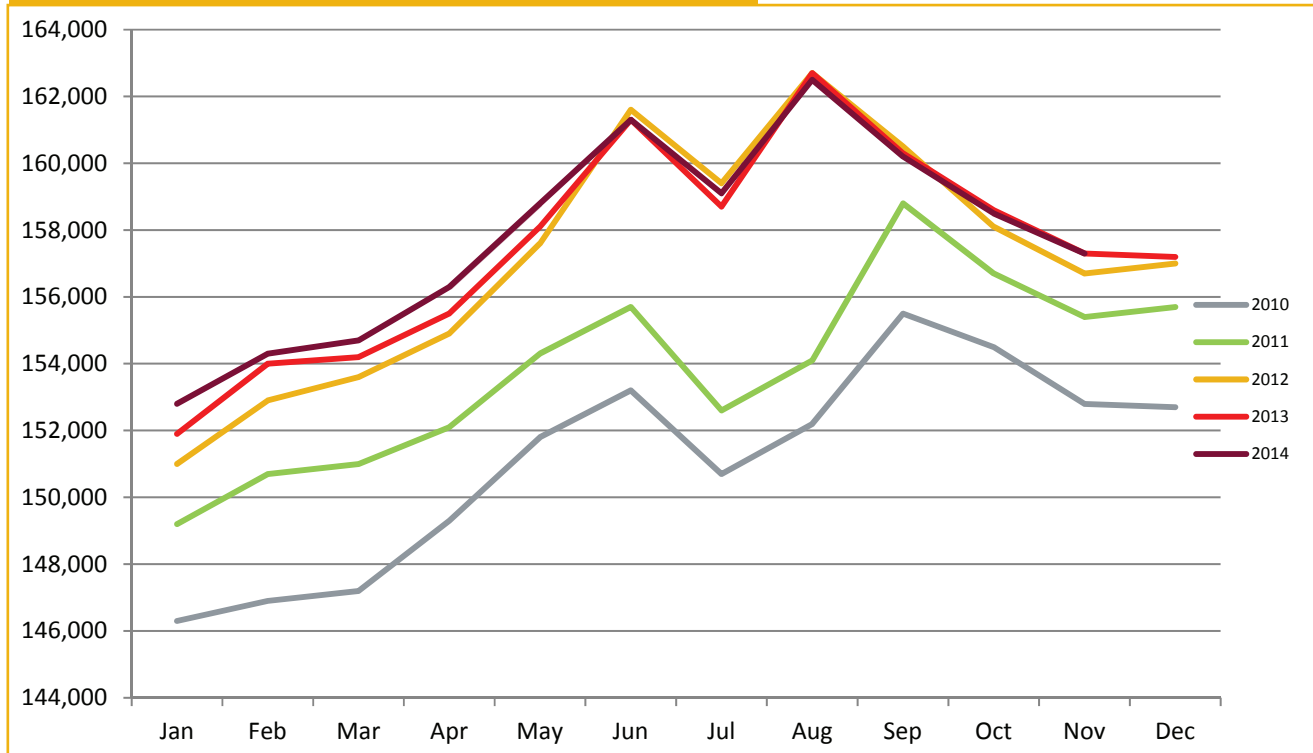






## ANCHORAGE EMPLOYMENT

Municipality of Anchorage 2010-Present



# 4.8%

November Unemployment  
Rate for Anchorage



**AEDC**  
Anchorage Economic  
Development Corporation