



AEDC

Anchorage Economic
Development Corporation

Anchorage Employment Report

Sponsored by:



First National Bank

A L A S K A

MEMBER FDIC

TABLE OF CONTENTS

EXECUTIVE SUMMARY.....3

 MONTHLY REVISIONS.....4

INSIDE THE NUMBERS: GOVERNMENT EMPLOYMENT5

GOODS PRODUCING JOBS SUMMARY6

SERVICES PROVIDING JOB SUMMARY7

 HEALTH CARE SNAPSHOT7

 TRANSPORTATION SNAPSHOT.....8

 PROFESSIONAL & BUSINESS SERVICES SNAPSHOT8

UNEMPLOYMENT CLAIMS.....9

UNEMPLOYMENT ANALYSIS OF SOUTHCENTRAL REGION (TABLE)..... 10

 LABOR FORCE ANALYSIS CHARTS..... 11

ANCHORAGE EMPLOYMENT ESTIMATES TABLE..... 12

ALASKA EMPLOYMENT ESTIMATES TABLE..... 13

ALASKA DEPARTMENT OF LABOR PRESS RELEASE..... 14

All data referenced in this employment report is from the State of Alaska, Dept. of Labor & Workforce Development website: www.laborstats.alaska.gov and from the U.S. Bureau of Labor Statistics: www.bls.gov.

Report compiled by Anchorage Economic Development Corp. Research Department.
Report generously sponsored by First National Bank Alaska.

If you are interested in learning more about this data or are interested in how AEDC can help you develop a report, call AEDC at 907.258.3700.

EXECUTIVE SUMMARY

MONTHLY UNEMPLOYMENT

The non-seasonally adjusted unemployment rate for Anchorage in September was 4.7 percent, a 0.2 percent increase from the August revised rate of 4.5 percent. **This is the lowest September unemployment rate for Anchorage since 2001, when it reached 4.4 percent.** Anchorage's September unemployment rate is 0.2 percent below the national rate of 4.9 percent and 1 percent lower than the statewide rate of 5.7 percent. The September unemployment rate for Anchorage was 0.2 percent lower than September of 2014. *As always, it should be noted that these are preliminary survey figures for the month and will be revised next month.*

4.7%

September 2015
Unemployment Rate
for Anchorage (preliminary)

YEAR-TO-DATE UNEMPLOYMENT

The average year-to-date (YTD) non-seasonally adjusted unemployment rate in Anchorage was 5.1 percent at the end of September, 0.2 percent lower than this time last year. **An increase of 538 in the employment total and 235 in the Anchorage labor force during the YTD period has resulted in the reported unemployment total decreasing by 303.** The total number of unemployed people in Anchorage for the month of September is estimated at 7,333 (those actively looking for jobs), 460 less than September 2014. This pool of unemployed people in Anchorage increased by 333 since August. In the Mat-Su Borough, the YTD average monthly unemployment rate was down 0.2 percent from 2014 YTD, while the Kenai Peninsula Borough's rate has reduced by 0.1 percent during this time (see the charts on page 11 for more details).

5.1%

2015 YTD
Unemployment Rate
for Anchorage (preliminary)

It is important to note that these Anchorage unemployment numbers represent the labor force residing in Anchorage, and does not describe the number of filled positions in Anchorage. The industry employment estimates referenced in the remainder of this report are representative of the number of jobs in the Municipality of Anchorage, regardless of the job holder's place of residency.

ANCHORAGE INDUSTRY EMPLOYMENT ESTIMATES

The Anchorage employment estimate for September, which includes total jobs in Anchorage held by city residents and commuters, is 161,900, this is 2,000 more jobs than in September of 2014. For the last three years, monthly employment numbers in Anchorage declined from August to September on average by 1.46 percent. **This year, the decline was only 0.61 percent, indicating that seasonal jobs may be lasting longer than usual.** The YTD monthly average for 2015 is 157,767, which is 489 jobs higher than compared to 2014 YTD. This represents a 0.31 increase in the total monthly average over the same period.

The private sector (total jobs minus government jobs) has grown by 489 jobs during this time, while Government employment has stayed flat. Federal and State Government employment has decreased by 56 and 133, respectively, while Local Government has increased by 156 (total change does not equal zero due to rounding of monthly estimates).

In the Goods Producing category, both the Construction and Mining & Logging (which includes Oil & Gas employment) industries are showing growth. Service Providing Industries that have flat or positive growth so far this year are Trade/Transportation/Utilities (TTU), Information, Educational & Health Services, Leisure & Hospitality and Government. Nine of the ten major industries' job estimates for September 2015 are at or above September 2014 totals.

161,900

Total jobs in Anchorage
September 2015 (preliminary)

EXECUTIVE SUMMARY CONTINUED

MONTHLY REVISIONS

Every month, the Alaska Department of Labor and Workforce Development's (DOLWD) Research and Analysis Division revises the previous month employment numbers based on the availability of newer or late arriving data. The following tables show the revision changes to Anchorage and Alaska job totals by industry for August.

Most adjustments are relatively minor. However, some changes do occur which are significant. Changes are normally the result of rounding errors, job classification modifications, sample size or modeling issues, or errors within the industry. In August, an error in the published total of Local Education jobs resulted in a significant revision. This error only affected the Local Education estimate and not any of the totals.

AUGUST 2015 REVISIONS, ANCHORAGE

<i>Industry</i>	<i>Preliminary Total</i>	<i>Revised Total</i>	<i>Net Change</i>
Total Nonfarm	162,600	162,900	+300
Goods Producing	16,600	16,700	+100
Oil & Gas	3,800	3,700	-100
Construction	10,100	10,300	+200
Services Providing	146,100	146,200	+100
Trade/Transportation/Utilities	34,800	34,900	+100
Transportation, Warehouse, Utilities	11,400	11,500	+100
Professional & Business Services	21,200	21,100	-100
Accommodation	3,500	3,600	+100
Local Education	4,300	7,300	+3,000

AUGUST 2015 REVISIONS, ALASKA


<i>Industry</i>	<i>Preliminary Total</i>	<i>Revised Total</i>	<i>Net Change</i>
Total Nonfarm	357,800	358,300	+500
Goods Producing	60,700	61,100	+400
Oil & Gas	15,300	15,200	-100
Construction	21,800	22,000	+200
Manufacturing	20,600	20,800	+200
Seafood Processing	16,400	16,600	+200
Services Providing	297,100	297,200	+100
Trade/Transportation/Utilities	72,100	72,200	+100
Transportation, Warehouse, Utilities	25,300	25,400	+100
Professional & Business Services	29,200	29,400	+200
Education & Health Services	47,000	47,200	+200
Leisure & Hospitality	40,800	40,700	-100
Accommodation	12,200	12,000	-200
Food Services & Drinking Places	22,300	22,400	+100
Other Services	12,000	11,800	-200
Government	77,700	77,600	-100
State Government	24,700	24,600	-100

INSIDE THE NUMBERS:

GOVERNMENT EMPLOYMENT

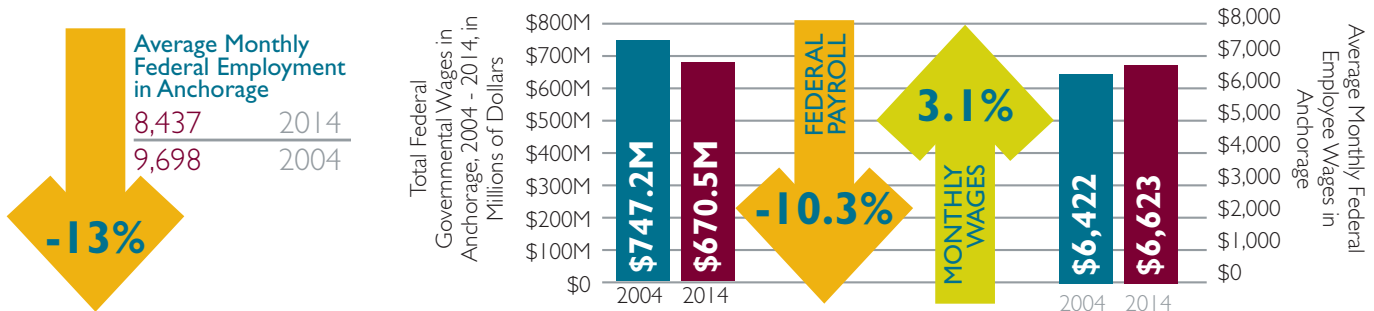
As it's been said before, Alaska's economy can be described as a three-legged stool, with each leg representing a major industry holding the economy together. The three "legs" are Petroleum, the Federal Government and Everything Else. This holds true in Anchorage as well, and the three legs could be defined more succinctly as Oil & Gas (including Mining), Government (Federal, State and Local) and Everything Else. In this report, we'll take a look at the government sector in Anchorage and how it has changed in the last 10 years.

2004  **20.44%** Share of jobs in Anchorage that are government positions

2014  **18.41%** Share of jobs in Anchorage that are government positions

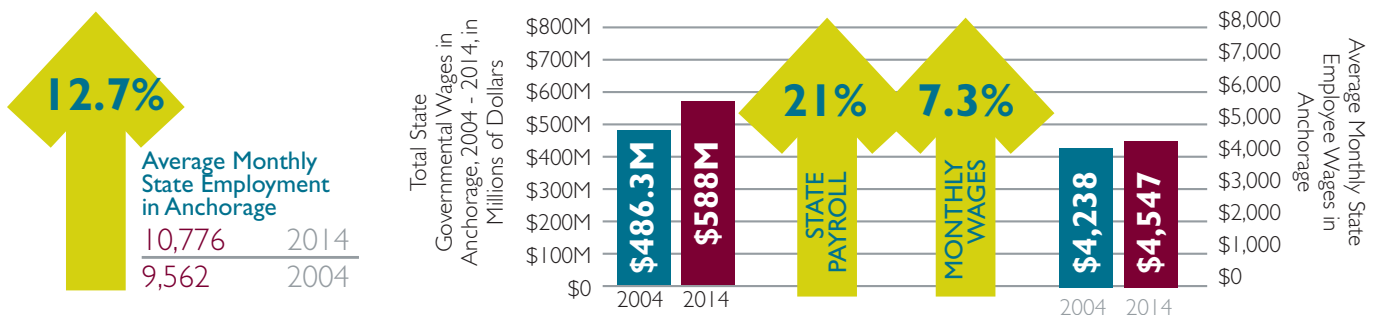
FEDERAL GOVERNMENT EMPLOYMENT & WAGES IN ANCHORAGE

5.44% Share of jobs in Anchorage that are in federal government, 2014. Down from 6.85% in 2004.



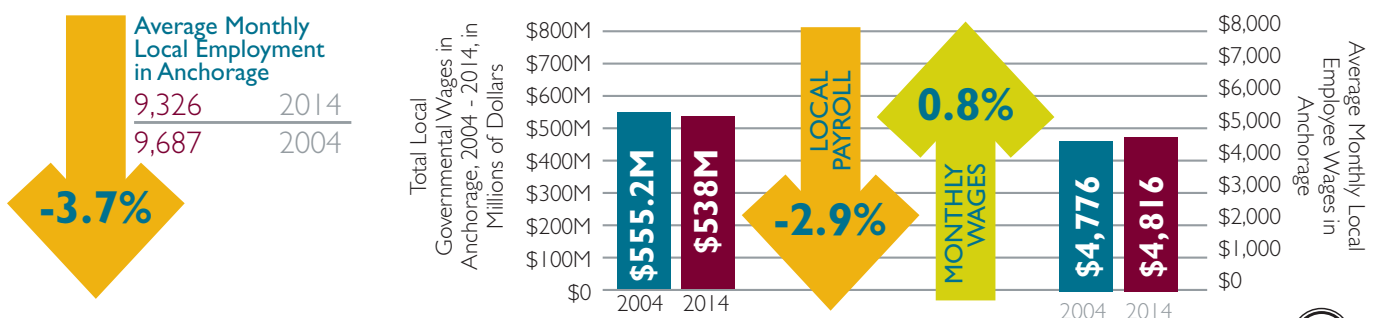
STATE GOVERNMENT EMPLOYMENT & WAGES IN ANCHORAGE

6.95% Share of jobs in Anchorage that are in state government, 2014. Up from 6.75% in 2004.



LOCAL GOVERNMENT EMPLOYMENT IN ANCHORAGE

6.02% Share of jobs in Anchorage that are in local government, 2014. Down from 6.84% in 2004.



GOODS PRODUCING JOBS

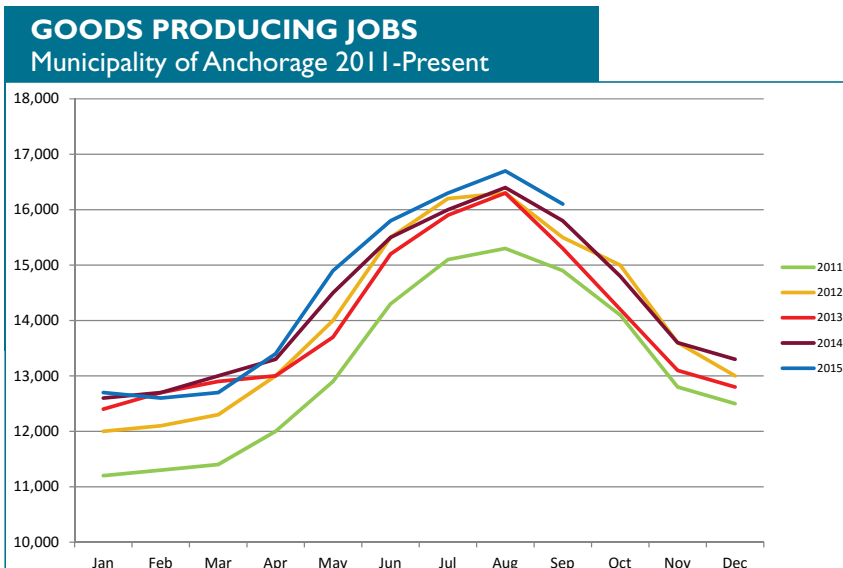
CONSTRUCTION WORK, MINING, OIL & GAS PRODUCTION, MANUFACTURING

With a job total of 14,578, employment in the Goods Producing¹ group increased by 156 jobs YTD compared to the same period one year ago. The Mining and Logging industry gained 56 jobs in 2015, when compared against the same period of 2014, and the Construction industry improved by 133 jobs over this time as well. The Manufacturing industry is the only one in this group to show a decrease of jobs at this point, with an estimated 11 fewer jobs YTD than last year at this time.

The Oil & Gas sector is classified as part of the Mining & Logging industry. The Oil & Gas sector is up 44 jobs this year when compared to 2014 YTD. The monthly estimate for August was revised down to 3,700 and the September estimate is at the same level. While Shell's recent decision to end their Outer Continental Shelf operations will result in some losses in this category, it is too early to estimate the magnitude of these reductions. Many companies in this sector are staying the course with their development plans in place and large scale job losses are not expected in the near term.

Growth in the Construction industry continued to hold strong in September and is over 10,000 for the second month in a row. This is the first time back-to-back monthly estimates in this industry have been at 10,000 or more since 2009. As of September, Construction employment is showing a YTD increase of 133 jobs from the 2014 YTD total. Some construction companies indicated at the beginning of the summer that they were pursuing smaller projects than usual to make up for the lack of large scale projects. These numbers may indicate that they were successful and are keeping employees on to wrap up these various projects before the season ends.

¹Those jobs that are specifically tied to production, not those which support the production or maintenance of the production jobs.



In Anchorage:

16,100

GOODS PRODUCING JOBS

September 2015 (preliminary)



10,000

CONSTRUCTION JOBS

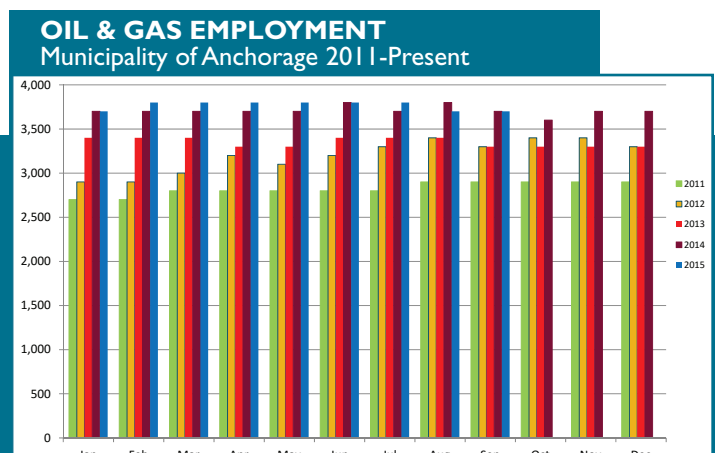
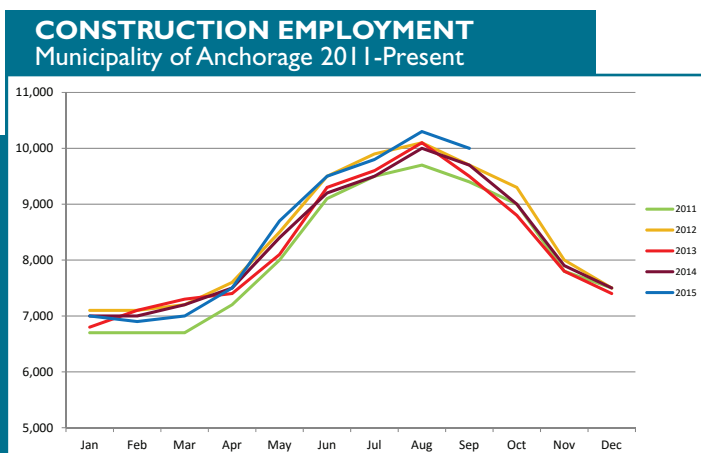
Sept. 2015 (preliminary)



3,700

OIL & GAS JOBS

Sept. 2015 (preliminary)



SERVICES PROVIDING JOBS

ENGINEERING, RETAIL, TOURISM, HEALTH CARE, ETC.

Service Providing jobs in Anchorage totaled 145,800 in September, 1,600 more than September of 2014.

Overall, the YTD average is up 333 jobs from 2014.

Job growth in the Information industry continues to lead all industries, increasing 3.89 percent YTD compared to the same period last year. The monthly estimate increased to 4,400 in September, 200 more jobs than in August. This is the first month-over-month increase above 100 in this industry since 2010. Strong demand for services from local telecommunications providers and a competitive broadcasting market have been a positive influence on Information job numbers and the industry will likely retain these jobs for the near future.

The Trade/Transportation/Utilities industry is also showing above average YTD growth, up 344 jobs, or 1.03 percent over 2014 YTD. The Retail Trade sector is still leading this rally, showing a 422 job increase YTD over the same period of 2014. September's monthly estimate of Retail Trade jobs was 18,200, 300 less than August, but 100 jobs more than September 2014. Retail employment generally contracts slightly in September as tourism related businesses scale back after the summer, but hiring quickly picks up again during the holiday season. **Recent national reports indicate holiday retail sales growth will be around 3.7 percent this year and that major retailers are expecting to hire at least as many seasonal holiday workers as they did in 2014.**

The Leisure & Hospitality industry continues to stay strong and is now showing a 156 job YTD improvement over 2014 YTD. The September monthly estimate has dropped to 17,400 jobs, after peaking during the tourist season with 18,200 jobs in July. **The September 2015 estimate is 300 jobs higher than September of 2014.**

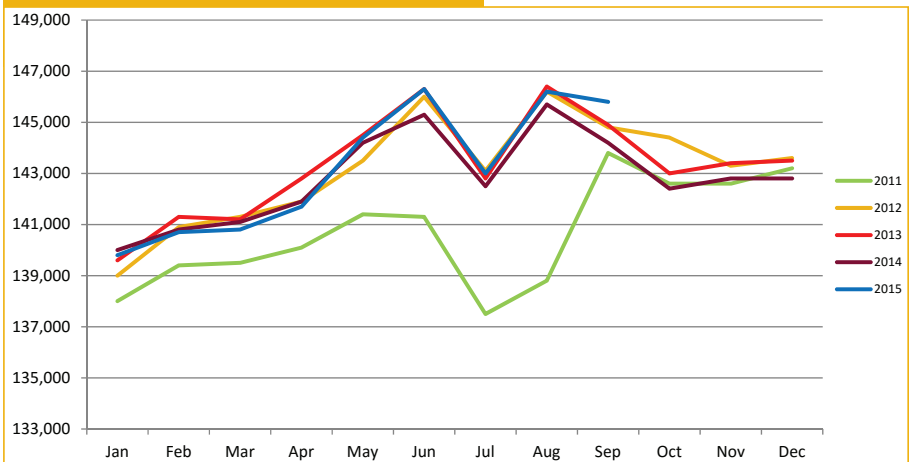
Employment in the Accommodation sector is up 56 jobs YTD and the category, Food Service and Drinking Places, shows an 89 job increase over the same time.

The monthly average for Government jobs has not changed YTD over last year. Local Education employment is up 144 for 2015 YTD from 2014. The overall monthly average for Local Government 2015 YTD is up 156 jobs, or 1.56 percent over 2014 YTD. Federal Government employment is averaging 56 fewer jobs than at this point last year and is continuing a trend of closing the gap each month since May. State Government totals are down 133 jobs YTD from this time last year, including an YTD decline of 100 jobs in the State Education sector.

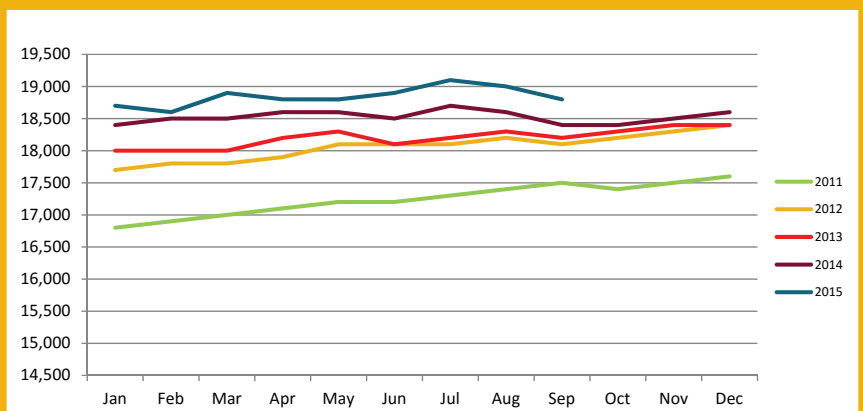
HEALTH CARE EMPLOYMENT

Health care jobs have increased by 311 YTD compared to 2014 YTD. The growth rate in this industry is at 1.68 percent for this period. The September estimate of 18,800 is 400 jobs higher than September of 2014, marking the fourth consecutive month this industry with estimates 400 jobs higher than the comparative month in 2014. This indicates that the job growth seen so far this year will likely remain in the near term.

SERVICES PROVIDING JOBS
Municipality of Anchorage 2011-Present



HEALTH CARE EMPLOYMENT
Municipality of Anchorage 2011-Present



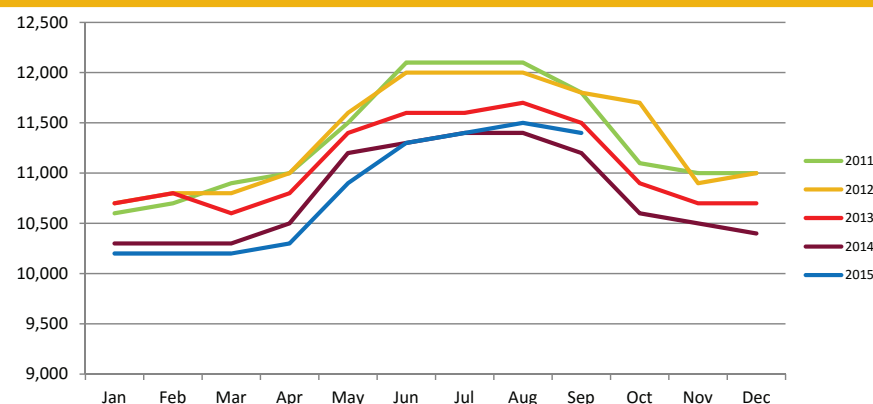
SERVICES PROVIDING JOBS, CONT.

TRANSPORTATION

The Trade/Transportation/Utilities industry continues to show significant YTD growth with 344 jobs over 2014 YTD totals. September's estimate of 34,400 is 300 jobs higher than September 2014. As reported earlier, Retail Trade is still driving this growth with 422 more jobs YTD than this period in 2014. Retail remains on track to add more than 1,000 jobs in the last two years.

Monthly job totals for the Transportation/Warehouse/Utilities sector have increased each month from March to August 2015, peaking at 11,500 and receding to 11,400 in September. This month's estimate is 200 jobs more than September 2014. Additionally, the YTD average has slowly been improving throughout 2015 and is now 56 jobs below the 2014 YTD average. These are very positive signs of recovery in this industry, which includes many well-paying blue collar jobs.

TRANSPORTATION/WAREHOUSE/UTILITIES EMPLOYMENT Municipality of Anchorage 2011-Present



11,400

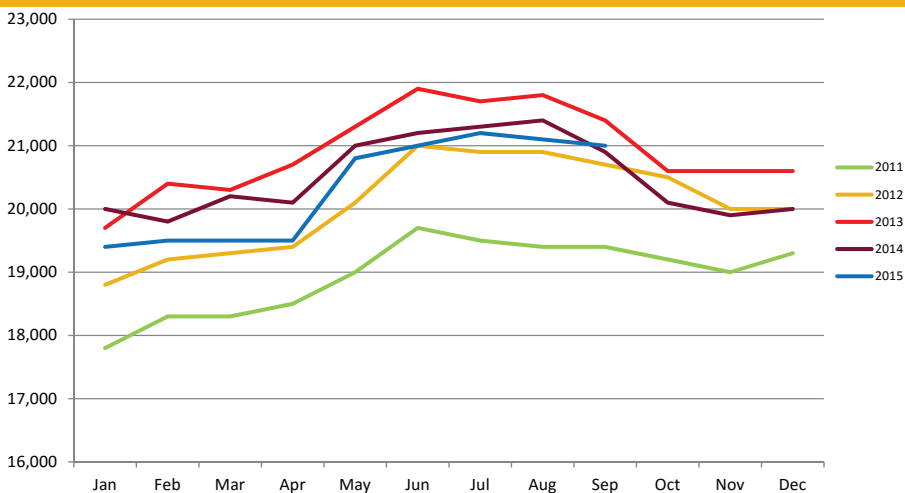
TRANSPORTATION/WAREHOUSE/UTILITIES JOBS
September 2015 (preliminary)

PROFESSIONAL & BUSINESS SERVICES

ENGINEERING, ARCHITECTURE, LEGAL SERVICES, ACCOUNTING, SCIENTIFIC RESEARCH, WASTE MANAGEMENT & ADMINISTRATIVE SERVICES

The YTD average in this industry is down 322 jobs from 2014, which is a 41 job improvement from the last report's comparison for August. The September estimate of 21,000 is 100 jobs higher than September 2014, the first time a monthly estimate for 2015 in this industry has been above its 2014 reading. This improvement supports cautious optimism for this industry, but judgement should be held until the results of next month's revisions are in.

PROFESSIONAL & BUSINESS SERVICES EMPLOYMENT Municipality of Anchorage 2011-Present

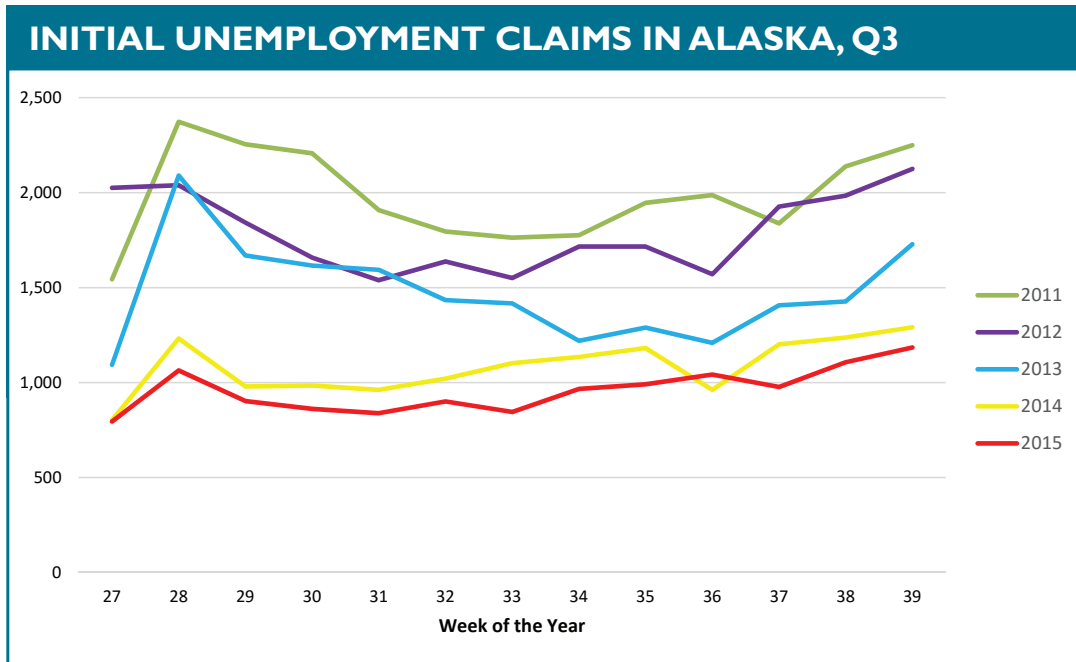


21,000

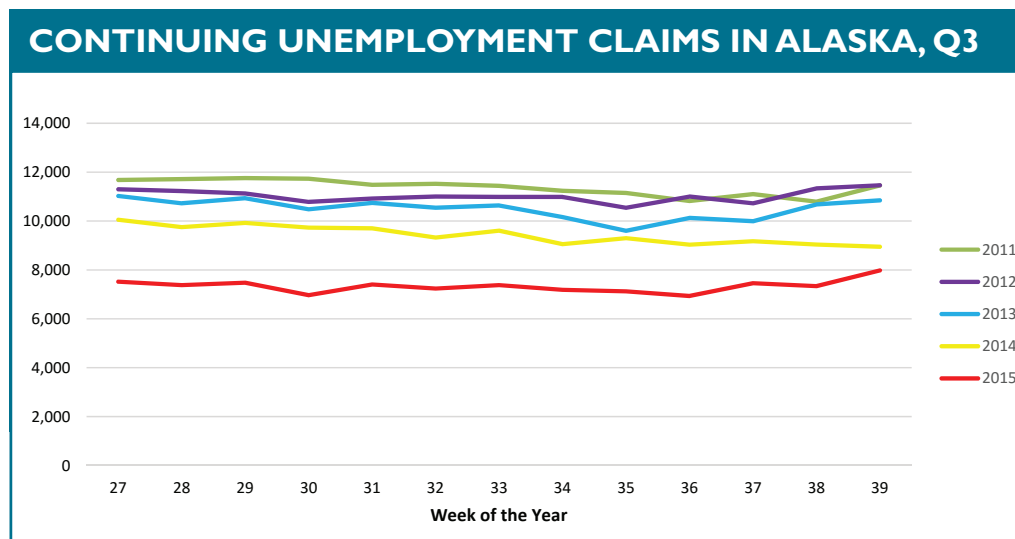
PROFESSIONAL & BUSINESS SERVICES JOBS
September 2015 (preliminary)

UNEMPLOYMENT CLAIMS

Initial unemployment claim applications can be interpreted as a proxy for layoffs. They tend to fall as job growth accelerates and climb as workers encounter difficulties finding employment. Filings remained consistent with historical trends throughout the summer, albeit at a lower rate. Entering into the fourth quarter, we expect to see initial claims rise for a few weeks as seasonal workers transition from their summer jobs, then gradually decline again until the end of the year. Statewide totals for the third quarter of 2015 averaged 124 fewer claims each week than in the third quarter of 2014.



Continuing claims figures help to show how well unemployed workers are re-entering the workforce. This total does not include workers receiving extended benefits from the federal government. The gap between weekly totals in 2015 and 2014 continues to shrink, but this has more to do with an abnormal downward trend at this point last year than a greater increase in continuing 2015 claims. While claims totals will be following historical trends by increasing weekly for the rest of the year, there are no indications that there will be any significant spikes that will move the trend from the current low level.



UNEMPLOYMENT ANALYSIS (YTD, 2015)

Anchorage, Mat-Su, Kenai Peninsula Borough

	Jan	Feb	Mar	Apr	May	Jun	Jul	Aug	Sep	Oct	Nov	Dec	15 YTD Avg	14 YTD Avg	15 vs 14 (YTD)
Municipality of Anchorage									Preliminary						
Labor Force	160,158	158,783	159,357	159,050	159,764	160,906	159,939	156,851	157,229				159,115	158,880	235
Employment	151,886	149,911	150,517	150,599	151,678	152,146	152,322	149,851	149,896				150,978	150,441	538
Unemployment	8,272	8,872	8,840	8,451	8,086	8,760	7,617	7,000	7,333				8,137	8,439	(303)
Unemployment Rate	5.2%	5.6%	5.5%	5.3%	5.1%	5.4%	4.8%	4.5%	4.7%				5.11%	5.31%	-0.20%
Mat-Su Borough															
Labor Force	44,502	44,205	44,356	44,033	44,139	44,471	44,049	43,014	43,058				43,981	43,931	50
Employment	40,715	40,120	40,261	40,308	40,660	40,778	40,811	40,130	40,098				40,431	40,305	127
Unemployment	3,787	4,085	4,095	3,725	3,479	3,693	3,238	2,884	2,960				3,550	3,626	(77)
Unemployment Rate	8.5%	9.2%	9.2%	8.5%	7.9%	8.3%	7.4%	6.7%	6.9%				8.07%	8.25%	-0.18%
Kenai Peninsula Borough															
Labor Force	27,057	26,963	26,984	27,002	28,086	29,322	29,992	29,597	27,962				28,107	28,000	107
Employment	24,682	24,359	24,420	24,706	25,954	27,108	28,039	27,808	26,080				25,906	25,784	122
Unemployment	2,375	2,604	2,564	2,296	2,132	2,214	1,953	1,789	1,882				2,201	2,216	(15)
Unemployment Rate	8.8%	9.7%	9.5%	8.5%	7.6%	7.6%	6.5%	6.0%	6.7%				7.83%	7.91%	-0.08%
Southcentral Region															
Labor Force	231,717	229,951	230,697	230,085	231,989	234,699	233,980	229,462	228,249				231,203	230,811	392
Employment	217,283	214,390	215,198	215,613	218,292	220,032	221,172	217,789	216,074				217,316	216,530	786
Unemployment	14,434	15,561	15,499	14,472	13,697	14,667	12,808	11,673	12,175				13,887	14,281	(394)
Unemployment Rate	6.2%	6.8%	6.7%	6.3%	5.9%	6.2%	5.5%	5.1%	5.3%				6.01%	6.19%	-0.18%
State of Alaska															
Labor Force	362,290	362,202	363,153	362,298	366,569	371,587	374,501	368,589	362,812				366,000	368,481	(2,481)
Employment	336,571	334,534	336,041	337,018	342,510	346,092	352,250	348,392	342,102				341,723	342,891	(1,167)
Unemployment	25,719	27,668	27,112	25,280	24,059	25,495	22,251	20,197	20,710				24,277	25,591	(1,314)
Unemployment Rate	7.1%	7.6%	7.5%	7.0%	6.6%	6.9%	5.9%	5.5%	5.7%				6.63%	6.94%	-0.31%

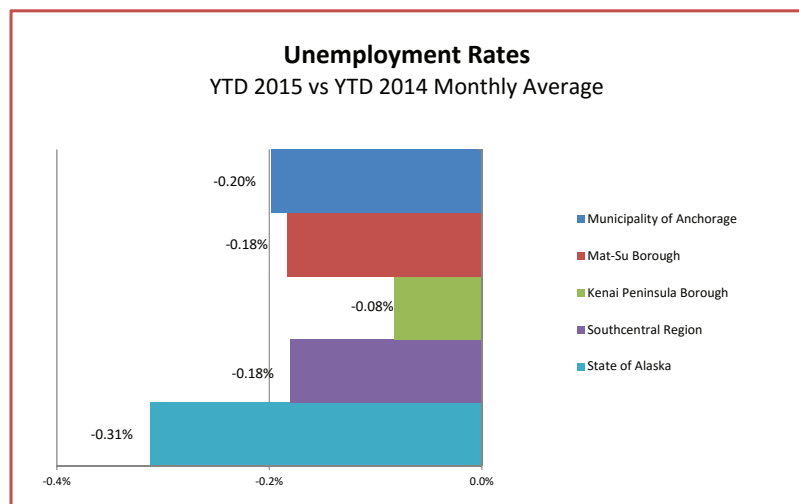
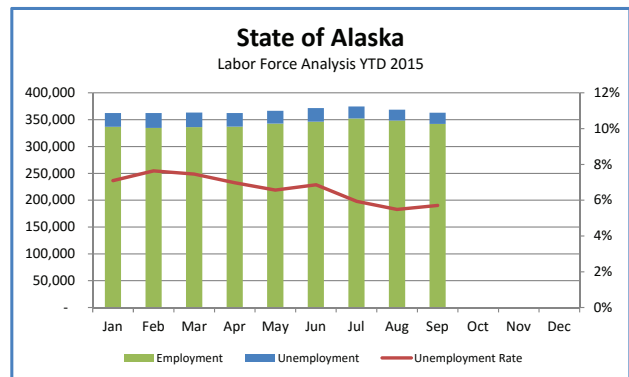
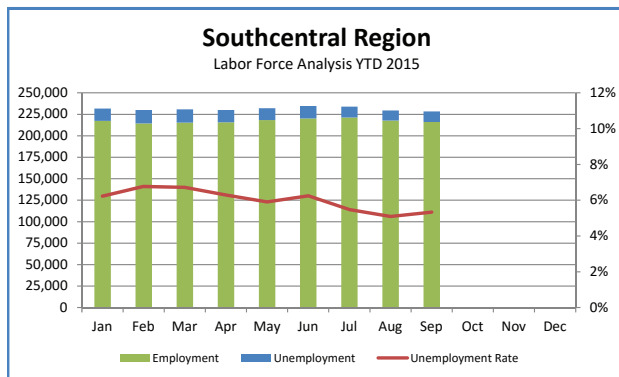
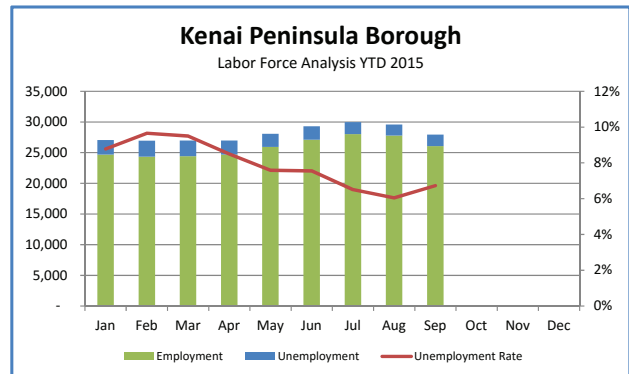
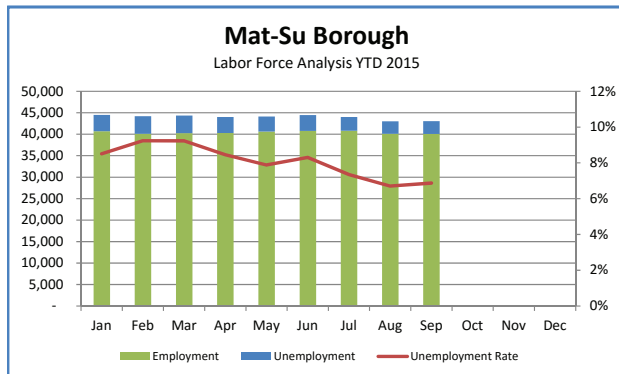
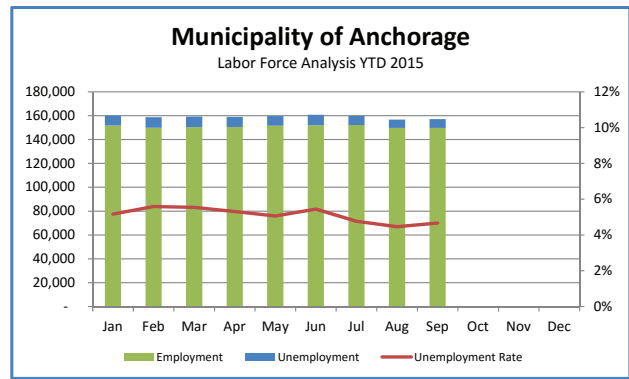
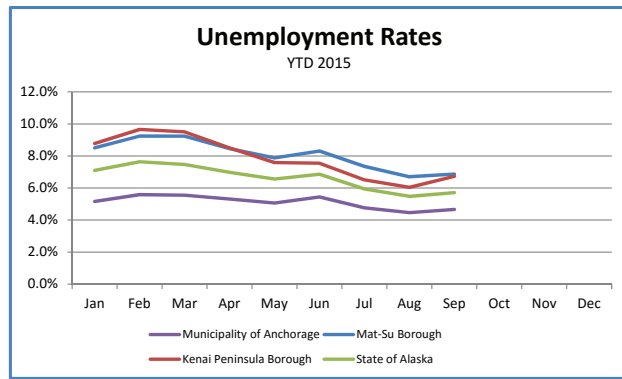
***Note:** These numbers reflect employment, unemployment, etc. for only those people that are residence of the specified City/Region, thus are not inclusive of people who commute to another city for their jobs. (Ex: Someone lives in Wasilla but works in Anchorage. They would be counted in the Mat-Su Borough's labor force and employment numbers, not the Municipality of Anchorage numbers)



AEDC
Anchorage Economic
Development Corporation



First National Bank
A L A S K A
MEMBER FDIC



INDUSTRY EMPLOYMENT ESTIMATES 2015

Municipality of Anchorage

Industry	Jan	Feb	Mar	Apr	May	Jun	Jul	Aug	Sep	Oct	Nov	Dec	2015 YTD Avg.	2014 YTD Avg.	2015 vs 2014 YTD Change	% Change
	Revised	Revised	Revised	Revised	Revised	Revised	Revised	Revised	Preliminary							
Total Nonfarm	152,400	153,300	153,600	155,100	159,300	162,100	159,300	162,900	161,900				157,767	157,278	489	0.31%
Goods Producing	12,700	12,600	12,700	13,400	14,900	15,800	16,300	16,700	16,100				14,578	14,422	156	1.08%
Services Providing	139,800	140,700	140,800	141,700	144,400	146,300	143,000	146,200	145,800				143,189	142,856	333	0.23%
Mining and Logging ²	3,800	3,900	3,900	3,900	3,900	3,900	3,900	3,900	3,900				3,889	3,833	56	1.45%
Oil & Gas	3,700	3,800	3,800	3,800	3,800	3,800	3,800	3,700	3,700				3,767	3,722	44	1.19%
Construction	7,000	6,900	7,000	7,500	8,700	9,500	9,800	10,300	10,000				8,522	8,389	133	1.59%
Manufacturing	1,800	1,800	1,800	1,900	2,300	2,400	2,500	2,600	2,300				2,156	2,167	-11	-0.51%
Trade/Transportation/Utilities	32,600	32,700	32,500	33,100	34,100	34,800	34,900	34,900	34,400				33,778	33,433	344	1.03%
Wholesale Trade	4,700	4,700	4,700	4,800	4,900	5,000	4,900	4,900	4,800				4,822	4,844	-22	-0.46%
Retail Trade	17,800	17,800	17,600	18,000	18,300	18,500	18,500	18,500	18,200				18,133	17,711	422	2.38%
Trans/Warehouse/Utilities	10,200	10,200	10,200	10,300	10,900	11,300	11,400	11,500	11,400				10,822	10,878	-56	-0.51%
Information	4,000	4,100	4,100	4,100	4,100	4,200	4,200	4,200	4,400				4,156	4,000	156	3.89%
Financial Activities	7,300	7,300	7,300	7,400	7,500	7,500	7,500	7,500	7,400				7,411	7,556	-144	-1.91%
Professional & Business Svcs	19,400	19,500	19,500	19,500	20,800	21,000	21,200	21,100	21,000				20,333	20,656	-322	-1.56%
Educational & Health Services	24,500	24,800	25,100	24,900	25,100	25,300	25,100	25,200	25,100				25,011	24,889	122	0.49%
Health Care	18,700	18,600	18,900	18,800	18,800	18,900	19,100	19,000	18,800				18,844	18,533	311	1.68%
Leisure & Hospitality	16,200	16,200	16,400	16,600	17,300	18,100	18,200	18,100	17,400				17,167	17,011	156	0.91%
Accommodation	3,000	3,100	3,000	3,100	3,400	3,500	3,600	3,600	3,400				3,300	3,244	56	1.71%
Food Svcs & Drinking Places	10,800	10,800	10,900	11,200	11,600	12,200	12,100	12,200	11,800				11,511	11,422	89	0.78%
Other Services	6,100	6,100	6,100	6,100	6,200	6,200	6,100	6,300	6,400				6,178	6,133	44	0.72%
Government	29,700	29,900	29,800	30,200	29,300	29,200	25,900	28,800	29,700				29,167	29,167	0	0.00%
Federal Government	8,400	8,400	8,300	8,500	8,400	8,500	8,600	8,500	8,600				8,467	8,522	-56	-0.65%
State Government	10,800	11,000	10,900	11,000	10,400	10,200	10,100	10,100	10,700				10,578	10,711	-133	-1.24%
State Education	2,800	2,900	2,900	2,900	2,300	2,000	1,900	2,100	2,700				2,500	2,600	-100	-3.85%
Local Government	10,500	10,600	10,500	10,700	10,500	10,500	7,200	10,200	10,400				10,122	9,967	156	1.56%
Local Education	7,700	7,700	7,700	7,900	7,700	7,600	4,300	7,300	7,600				7,278	7,133	144	2.02%

- Nonfarm Wage & Salary excludes self-employed workers, fishers, domestics, and unpaid family workers.

- All totals are seasonally non-adjusted totals.

- Government includes employees of public school systems and the University of Alaska.

- Beginning January 2001, wage and salary employment estimates were published under a new classification system. The Standard Industrial Classification system (SIC) has been replaced by the North American Industry Classification System (NAICS). Data prior to 2001 are comparable only at the Total Nonfarm and Government levels.

^{1/} As of January 2001, certain federally-recognized tribal entities were moved to Local Government, which created a series break for Total Government and Local Government. Please see the April 2002 Alaska Economic Trends publication for a detailed explanation.

^{2/} This category was called "Natural Resources and Mining" in previous years. The change is in name only; the industries it includes remain the same.

- Some totals may not equal components due to rounding.

- Source: Alaska Department of Labor and Workforce Development, Research and Analysis Section

*** Note:** The above numbers are representative of all people employed in the Municipality of Anchorage, this is inclusive of workers who claim residence outside of the Municipality of Anchorage. (Ex: someone who lives in the Mat-Su, but works in Anchorage would be included in these number)

Quick Comparisons

15 vs 14	2,000	1.25%
September		
15 vs 14	-267	-0.17%
1st Qtr		
15 vs 14	567	0.36%
2nd Qtr		
15 vs 14	1,167	0.73%
3rd Qtr		
15 vs 14	-	-
4th Qtr		

INDUSTRY EMPLOYMENT ESTIMATES 2015

State of Alaska

	Jan	Feb	Mar	Apr	May	Jun	Jul	Aug	Sep	Oct	Nov	Dec	2015 YTD Avg.	2014 YTD Avg.	2015 vs 2014 YTD Change	% Change
	Revised	Revised	Revised	Revised	Revised	Revised	Revised	Revised	Preliminary							
Total Nonfarm	323,000	325,500	327,500	333,500	343,600	357,700	363,300	358,300	349,400				342,422	340,811	1,611	0.47%
Goods Producing	43,600	44,400	45,200	46,800	47,200	55,300	64,500	61,100	54,400				51,389	51,278	111	0.22%
Services Providing	279,400	281,100	282,300	286,700	296,400	302,400	298,800	297,200	295,000				291,033	289,533	1,500	0.52%
Mining and Logging ²	17,200	17,300	17,600	17,600	17,700	18,100	18,300	18,300	18,000				17,789	17,844	-56	-0.31%
Mining	17,100	17,100	17,400	17,300	17,400	17,700	17,900	17,900	17,700				17,500	17,556	-56	-0.32%
Oil & Gas	14,700	14,800	15,000	14,900	14,800	15,100	15,200	15,200	14,900				14,956	14,656	300	2.05%
Construction	15,100	14,900	15,300	16,600	18,400	20,300	21,500	22,000	21,400				18,389	17,367	1,022	5.89%
Manufacturing	11,300	12,200	12,300	12,600	11,100	16,900	24,700	20,800	15,000				15,211	16,067	-856	-5.33%
Seafood Processing	7,400	8,500	8,600	8,500	7,000	12,700	20,100	16,600	11,200				11,178	12,278	-1,100	-8.96%
Trade/Transportation/Utilities	62,600	62,400	62,700	64,500	69,900	71,400	72,300	72,200	68,900				67,433	65,233	2,200	3.37%
Wholesale Trade	6,100	6,200	6,200	6,400	6,600	6,700	6,600	6,700	6,500				6,444	6,533	-89	-1.36%
Retail Trade	36,100	35,900	36,100	37,100	38,700	39,800	40,400	40,100	38,600				38,089	36,767	1,322	3.60%
Food & Beverage Stores	6,000	6,000	6,000	6,000	6,300	6,500	6,700	6,500	6,300				6,256	6,311	-56	-0.88%
General Merchandise Stores	9,800	9,600	9,500	9,700	9,900	10,100	10,200	10,300	10,200				9,922	9,833	89	0.90%
Trans/Warehouse/Utilities	20,400	20,300	20,400	21,000	24,600	24,900	25,300	25,400	23,800				22,900	21,933	967	4.41%
Air Transportation	5,600	5,600	5,700	6,000	6,400	6,800	6,800	6,800	6,300				6,222	5,956	267	4.48%
Information	6,200	6,300	6,200	6,100	6,200	6,300	6,300	6,200	6,200				6,222	6,256	-33	-0.53%
Telecommunications	4,200	4,300	4,300	4,200	4,300	4,300	4,400	4,400	4,300				4,300	4,133	167	4.03%
Financial Activities	11,900	12,000	11,800	11,900	11,800	12,100	12,300	12,100	12,200				12,011	10,918	1,093	10.01%
Professional & Business Svcs	28,100	28,200	28,100	28,600	29,500	30,200	30,100	29,400	29,400				29,067	30,144	-1,078	-3.58%
Educational & Health Services	47,200	47,300	47,900	48,300	48,300	47,600	47,400	47,200	47,200				47,600	46,789	811	1.73%
Health Care	34,100	34,000	34,500	34,600	34,700	34,900	34,800	34,400	33,800				34,422	33,800	622	1.84%
Leisure & Hospitality	29,900	30,100	30,700	31,500	35,200	40,300	41,200	40,700	37,100				35,189	35,256	-67	-0.19%
Accommodation	7,800	7,800	7,800	8,100	9,500	11,700	12,200	12,000	10,700				9,733	8,967	767	8.55%
Food Svcs & Drinking Places	18,300	18,300	18,800	19,200	20,600	22,600	22,700	22,400	21,000				20,433	21,211	-778	-3.67%
Other Services	11,600	11,700	11,700	11,900	12,100	12,300	12,300	11,800	12,000				11,933	11,778	156	1.32%
Government	81,900	83,100	83,200	83,900	83,400	82,200	76,900	77,600	82,000				81,578	81,900	-322	-0.39%
Federal Government	14,200	14,200	14,400	14,500	15,100	15,700	15,700	15,500	15,400				14,967	15,011	-44	-0.30%
State Government	26,300	26,600	26,700	26,900	25,900	24,800	24,200	24,600	25,600				25,733	26,411	-678	-2.57%
State Education	8,200	8,600	8,600	8,600	7,400	6,000	5,700	6,400	7,800				7,478	7,767	-289	-3.72%
Local Government	41,400	42,300	42,100	42,500	42,400	41,700	37,000	37,500	41,000				40,878	40,478	400	0.99%
Local Education	23,500	24,100	24,000	24,300	24,000	22,500	17,100	18,200	22,600				22,256	22,178	78	0.35%
Tribal Government ¹	3,400	3,400	3,500	3,600	3,800	3,900	4,100	4,100	3,900				3,744	3,700	44	1.20%

- Nonfarm Wage & Salary excludes self-employed workers, fishers, domestics, and unpaid family workers.

- All totals are non-seasonally adjusted totals.

- Government includes employees of public school systems and the University of Alaska.

- Beginning January 2001, wage and salary employment estimates were published under a new classification system. The Standard Industrial Classification system (SIC) has been replaced by the North American Industry Classification System (NAICS). Data prior to 2001 are comparable only at the Total Nonfarm and Government levels.

^{1/} As of January 2001, certain federally-recognized tribal entities were moved to Local Government, which created a series break for Total Government and Local Government. Please see the April 2002 Alaska Economic Trends publication for a detailed explanation.

^{2/} This category was called "Natural Resources and Mining" in previous years. The change is in name only; the industries it includes remain the same.

- Totals may not equal sub-sections due to rounding.

- Source: Alaska Department of Labor and Workforce Development, Research and Analysis Section

Quick Comparisons				
15 vs 14 September	-800	-0.23%		
15 vs 14 1st Qtr	3,500	1.09%		
15 vs 14 2nd Qtr	1,667	0.49%		
15 vs 14 3rd Qtr	-333	-0.09%		
15 vs 14 4th Qtr				



Press Release

COMMISSIONER'S OFFICE

October 16, 2015

No. 15-42

For more information: Neal Fried, Economist
907-269-4861, Neal.Fried@Alaska.Gov

Unemployment rate at 6.4 percent in September

JUNEAU, Alaska— Alaska's seasonally adjusted unemployment rate was 6.4 percent in September, down slightly from August's 6.6 percent. The comparable national rate was 5.1 percent.

The seasonally adjusted unemployment rate has not shown a clear, sustained trend up or down in 2015. Despite looming economic challenges, the rate does not indicate that the broader economy had been noticeably affected through September.

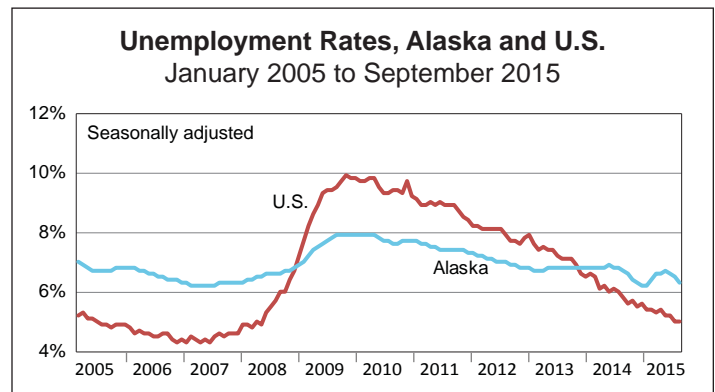
Alaska's not-seasonally adjusted rate began its annual autumnal climb, from August's 5.5 percent to 5.7 percent in September, as summer activity winds down.

Around the state, unadjusted rates increased in 21 out of 29 boroughs and census areas. The largest increases were in the Bristol Bay Borough and Dillingham Census Area, where rates climbed by 2.1 and 2.5 percentage points, respectively. These areas typically have large seasonal swings because of their dependence on summer salmon fisheries.

The highest unemployment rate in September was in the Kusilvak Census Area at 19.5 percent. The lowest was in the Aleutians West Census Area at 2.9 percent.

For detailed employment estimates, see <http://live.laborstats.alaska.gov/ces/>. The estimates are preliminary and subject to potentially large revisions.

###



Unemployment Rates, Seasonally Adjusted

	9/15	8/15	9/14
Alaska	6.4%	6.6%	6.8%
U.S.	5.1%	5.3%	5.9%

Sources: Alaska Department of Labor and Workforce Development, Research and Analysis Section; and U.S. Bureau of Labor Statistics

Labor Force by Borough and Census Area, Not Seasonally Adjusted¹

	Civilian Labor Force			Unemployed					
	9/15 ^P	8/15	9/14	Number			Rate		
	9/15 ^P	8/15	9/14	9/15 ^P	8/15	9/14	9/15 ^P	8/15	9/14
Alaska	362,812	368,589	367,603	20,710	20,197	22,754	5.7	5.5	6.2
Anchorage/Mat-Su Region	200,287	199,865	202,214	10,293	9,884	10,922	5.1	4.9	5.4
Anchorage, Municipality	157,229	156,851	158,656	7,333	7,000	7,786	4.7	4.5	4.9
Matanuska-Susitna Borough	43,058	43,014	43,558	2,960	2,884	3,136	6.9	6.7	7.2
Gulf Coast Region	39,739	42,135	40,210	2,463	2,361	2,675	6.2	5.6	6.7
Kenai Peninsula Borough	27,962	29,597	28,271	1,882	1,789	1,990	6.7	6.0	7.0
Kodiak Island Borough	6,603	6,813	6,670	261	268	307	4.0	3.9	4.6
Valdez-Cordova Census Area	5,174	5,725	5,269	320	304	378	6.2	5.3	7.2
Interior Region	53,542	54,293	54,270	2,910	2,838	3,269	5.4	5.2	6.0
Denali Borough	1,457	1,690	1,471	67	63	74	4.6	3.7	5.0
Fairbanks North Star Borough	46,691	47,149	47,252	2,206	2,135	2,421	4.7	4.5	5.1
Southeast Fairbanks Census Area	2,850	2,986	2,939	259	270	339	9.1	9.0	11.5
Yukon-Koyukuk Census Area	2,544	2,468	2,608	378	370	435	14.9	15.0	16.7
Northern Region	11,304	11,181	11,434	1,094	1,101	1,206	9.7	9.8	10.5
Nome Census Area	4,141	3,972	4,218	429	447	499	10.4	11.3	11.8
North Slope Borough	4,247	4,260	4,246	240	230	233	5.7	5.4	5.5
Northwest Arctic Borough	2,916	2,949	2,970	425	424	474	14.6	14.4	16.0
Southeast Region	38,730	41,015	39,765	1,949	1,970	2,273	5.0	4.8	5.7
Haines Borough	1,270	1,415	1,318	72	72	87	5.7	5.1	6.6
Hoonah-Angoon Census Area	1,209	1,359	1,245	118	133	130	9.8	9.8	10.4
Juneau, City and Borough	17,381	17,779	17,793	695	693	787	4.0	3.9	4.4
Ketchikan Gateway Borough	7,389	7,795	7,614	378	370	479	5.1	4.7	6.3
Petersburg Borough	1,682	1,977	1,746	117	117	144	7.0	5.9	8.2
Prince of Wales-Hyder Census Area	2,812	2,794	2,904	269	274	316	9.6	9.8	10.9
Sitka, City and Borough	4,690	5,401	4,794	178	182	196	3.8	3.4	4.1
Skagway, Municipality	968	1,045	985	42	44	40	4.3	4.2	4.1
Wrangell, City and Borough	1,026	1,155	1,056	63	67	75	6.1	5.8	7.1
Yakutat, City and Borough	303	295	310	17	18	19	5.6	6.1	6.1
Southwest Region	19,212	20,099	19,711	2,003	2,045	2,408	10.4	10.2	12.2
Aleutians East Borough	2,067	2,352	2,106	72	69	95	3.5	2.9	4.5
Aleutians West Census Area	4,092	4,194	4,187	117	115	177	2.9	2.7	4.2
Bethel Census Area	7,219	7,063	7,411	983	996	1,185	13.6	14.1	16.0
Bristol Bay Borough	519	670	533	31	26	34	6.0	3.9	6.4
Dillingham Census Area	1,812	2,460	1,851	184	190	206	10.2	7.7	11.1
Kusilvak Census Area	2,832	2,751	2,922	553	584	625	19.5	21.2	21.4
Lake and Peninsula Borough	671	609	701	63	65	86	9.4	10.7	12.3

P = Preliminary. As more information becomes available, data are revised every month for the previous month and again at the end of every calendar year.

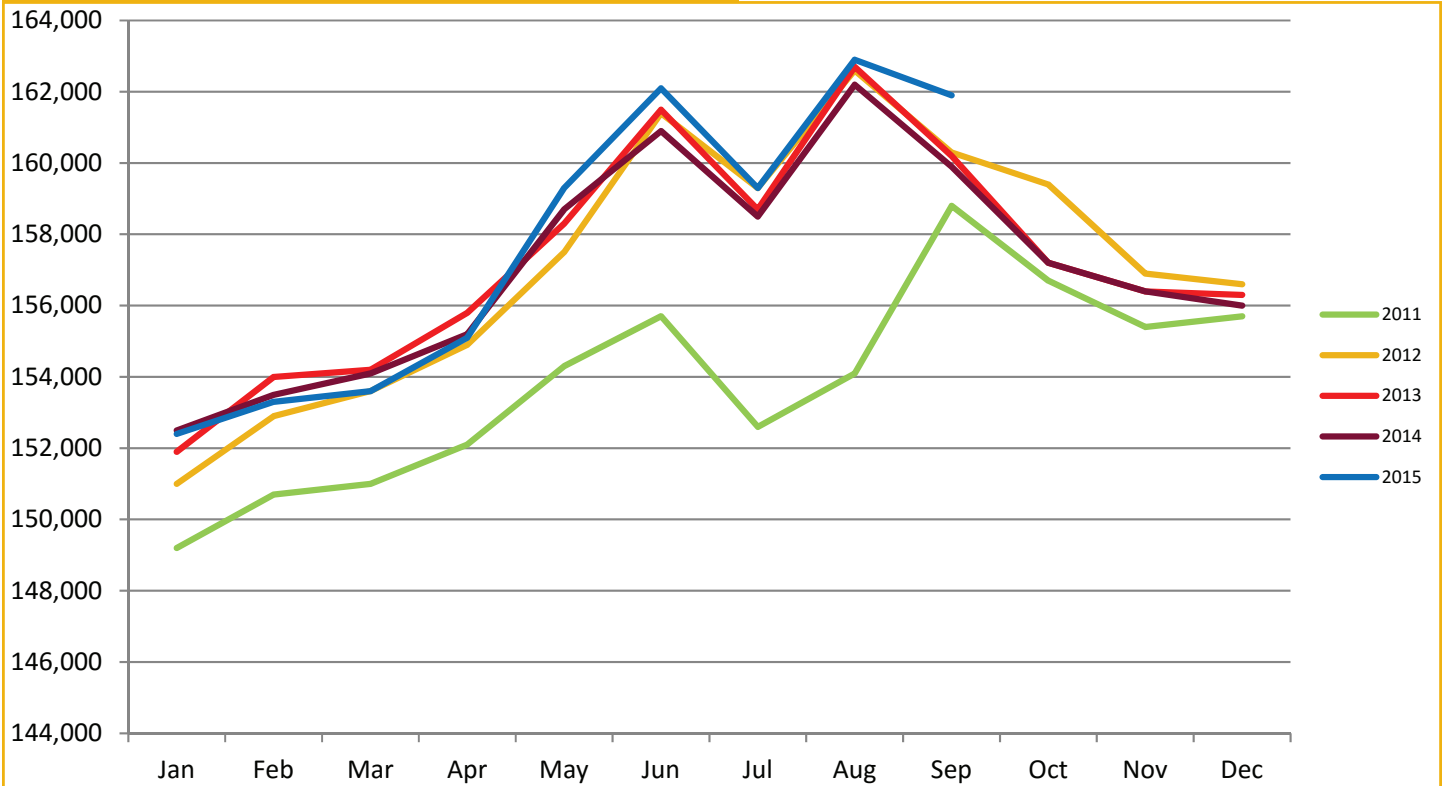
Note: The official definition of unemployment excludes anyone who has not made an active attempt to find work in the four-week period up to and including the week that includes the 12th of the reference month. Many in rural Alaska do not meet the definition because they have not conducted an active job search due to the scarcity of employment opportunities.

¹Unemployment rates that are not seasonally adjusted should not be compared with those that are.

Source: Alaska Department of Labor and Workforce Development, Research and Analysis Section; and U.S. Bureau of Labor Statistics

ANCHORAGE EMPLOYMENT

Municipality of Anchorage 2011-Present



AEDC
Anchorage Economic
Development Corporation