

Third Edition 2016 - April



**AEDC**

**Anchorage Economic**  
Development Corporation

# Anchorage Employment Report

Sponsored by:



**First National Bank**

**A L A S K A**

MEMBER FDIC

TABLE OF CONTENTS

EXECUTIVE SUMMARY.....3

2016 STATEWIDE JOBS UPDATE.....4

GOODS PRODUCING JOBS SUMMARY .....5

SERVICES PROVIDING JOBS SUMMARY .....6

    HEALTH CARE SNAPSHOT .....6

    TRANSPORTATION SNAPSHOT.....7

    PROFESSIONAL & BUSINESS SERVICES SNAPSHOT .....7

UNEMPLOYMENT CLAIMS.....8

UNEMPLOYMENT ANALYSIS OF SOUTHCENTRAL REGION (TABLE).....9

    LABOR FORCE ANALYSIS CHARTS..... 10

ANCHORAGE EMPLOYMENT ESTIMATES TABLE ..... 11

ALASKA EMPLOYMENT ESTIMATES TABLE..... 12

ALASKA DEPARTMENT OF LABOR PRESS RELEASE..... 13

All data referenced in this employment report is from the State of Alaska, Dept. of Labor & Workforce Development website: [www.laborstats.alaska.gov](http://www.laborstats.alaska.gov) and from the U.S. Bureau of Labor Statistics: [www.bls.gov](http://www.bls.gov).

**Report compiled by Anchorage Economic Development Corp. Research Department.**

**Report generously sponsored by First National Bank Alaska.**

If you are interested in learning more about this data or are interested in how AEDC can help you develop a report, call AEDC at 907.258.3700.

## EXECUTIVE SUMMARY

### MONTHLY UNEMPLOYMENT

The not seasonally adjusted unemployment rate for Anchorage in April was 5.3 percent, down 0.2 percent from the March revised rate. **This is above the national rate of 5.0 percent and below the statewide not seasonally adjusted rate of 6.9 percent.** The April unemployment rate for Anchorage was 0.3 percent higher than it was in April 2015. *As always, it should be noted that these are preliminary survey figures for April and will be revised next month.*

### YEAR-TO-DATE UNEMPLOYMENT

The average year-to-date (YTD) not seasonally adjusted unemployment rate in Anchorage was 5.5 percent at the end of April, 0.4 percent higher than at this time last year. **A decrease of 3,856 in the employment total and 3,462 in the Anchorage labor force during the YTD period has resulted in the reported unemployment total increasing by 394.** The total number of unemployed people in Anchorage for the month of April is estimated at 8,350 (those actively looking for jobs), 447 more than April 2015. In the Mat-Su Borough, the YTD average monthly unemployment rate is up 0.6 percent from 2015 YTD while the Kenai Peninsula's has increased by 0.8 percent during the same period (see the charts on pages 9-10 for more details).

*It is important to note that the Anchorage unemployment numbers represent the labor force residing in Anchorage and do not describe the number of filled positions in Anchorage. The industry employment estimates referenced in the remainder of this report are representative of the number of jobs in the Municipality of Anchorage, regardless of the job holder's place of residency.*

### ANCHORAGE INDUSTRY EMPLOYMENT ESTIMATES

As for Anchorage industry employment estimates, which includes total jobs in Anchorage held by city residents and commuters, the YTD average for 2016 shows a loss of 300 jobs (-0.2%) so far compared to the same period in 2015. The private sector (total jobs minus government jobs) shrunk by 600 (-0.4%) jobs during this time, while Government employment has increased by 300 (+1.0%). Federal jobs have increased by 400 (+4.8%) so far. State Government jobs have decreased by 300 (-2.8%) and Local Government jobs have increased by 200 (+1.9%). It's important to note that it is early in the year and these figures will likely be revised as more data is received and additional analysis is conducted.

The Goods Producing category lost 900 jobs YTD (-6.8%). The Mining & Logging industry (which includes Oil & Gas employment) continues to decline locally and is showing 400 fewer jobs (-10.3%). Construction is down 400 jobs YTD (-5.3%), while Manufacturing remains flat compared to 2015.

Services Providing industries have added 600 jobs YTD (+0.4%). Categories showing increases include Trade/Transportation/Utilities (TTU) up 300 jobs (+0.9%), Health Care up 400 jobs (+2.1%) and Leisure & Hospitality (Tourism) up 200 jobs (+1.2%). The only Services Providing industry showing losses so far in 2016 is Professional & Business Services down 600 jobs (-3.0%).

# 5.3%

**April 2016**

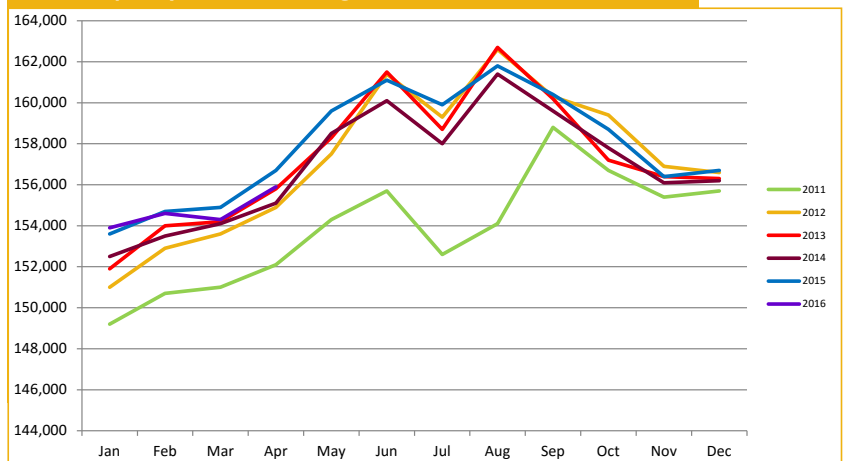
Unemployment Rate  
for Anchorage (preliminary)

# 5.5%

**2016 YTD**

Unemployment Rate  
for Anchorage (preliminary)

### ANCHORAGE EMPLOYMENT Municipality of Anchorage 2011-Present



# 155,900

Total jobs in Anchorage  
April 2016 (preliminary)

## 2016 STATEWIDE JOBS UPDATE:

Year-to-date, the State of Alaska preliminary employment estimates are showing significant job losses in the Goods Producing categories and have now moved into negative territory. Through April, the 2016 preliminary jobs data indicates total state employment decreased by 1,800 jobs (-0.6%) due mainly to a decrease in the count of Goods Providing jobs of -3,400 (-7.4%) that offset an increase of 2,800 (+1.0%) Services Producing jobs. It is important to note that Goods Producing jobs in Alaska tend to be much higher paying than Services Providing jobs, creating a greater impact in the broader economy on a per job basis.

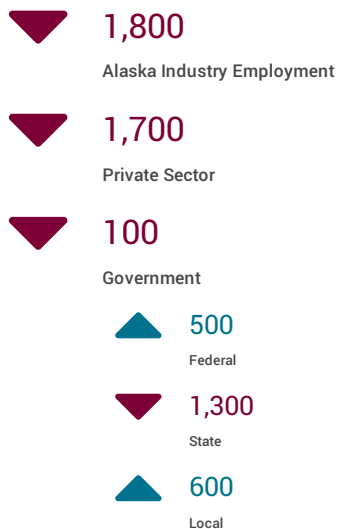
### GOODS PRODUCING:

In the Goods Producing category, the Mining & Logging industry (which includes Oil & Gas employment) has declined significantly, showing 1,900 fewer jobs. Oil & Gas employment decreased by 2,000 jobs. Statewide Construction jobs are down 1,200 jobs YTD. Seafood Processing jobs are up 300 through April. Overall, total Goods Producing employment has declined to levels last seen in 2012.

### SERVICES PROVIDING:

Statewide in Services Providing industries, categories showing increases include Trade/Transportation/Utilities (TTU) up 2,100 jobs, Health Care up 1,400 jobs, Financial Activities up 500 jobs and Leisure & Hospitality (Tourism) up 200 jobs. Services Providing industries showing losses so far in 2016 include Professional & Business Services down 1,300 jobs and Information down 200 jobs.

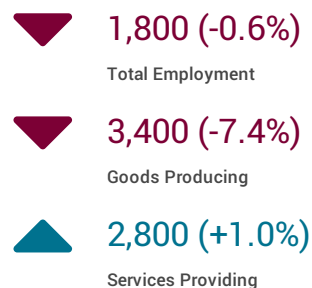
#### YTD AVG. EST., JAN.-APRIL 2016



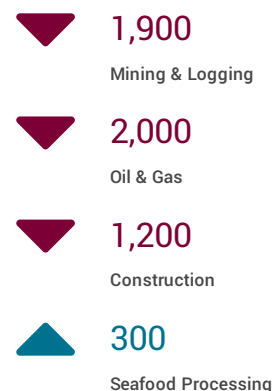
#### PRIVATE SECTOR VS. GOVERNMENT:

Alaska industry employment YTD average estimates through April 2016, shows a loss of 1,800 jobs compared to the same period in 2015. The private sector (total jobs minus government jobs) has decreased by 1,700 jobs during this time, while Government employment has decreased by 100. Federal jobs have increased by 500 so far. State Government jobs have decreased by 1,300 and Local Government jobs have increased by 600. It's important to note that it is early in the year and these figures will likely be revised as more data is received and additional analysis is conducted.

#### YEAR-TO-DATE STATEWIDE, PRELIMINARY



#### GOODS PRODUCING YTD AVG. EST., JAN.-APRIL 2016



#### SERVICES PROVIDING YTD AVG. EST., JAN.-APRIL 2016



## GOODS PRODUCING JOBS

### CONSTRUCTION WORK, MINING, OIL & GAS PRODUCTION, MANUFACTURING

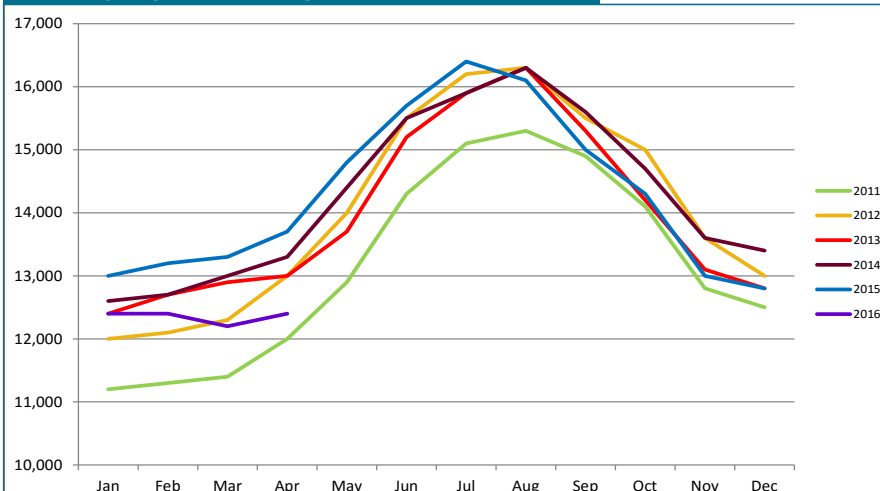
Growth in the number of Goods Producing<sup>1</sup> jobs in Anchorage is continuing its downward trend 2016 YTD. The YTD average of 12,400 is 900 (-6.8%) fewer jobs than the same period in 2015. A decrease of 400 (-10.3%) jobs in the Mining & Logging industry (which includes Oil & Gas employment) is the group's biggest losing industry, while YTD Construction employment is down 400 (-5.3%) jobs. Manufacturing remains flat with a YTD average of 1,800 jobs. Total Anchorage Goods Producing employment has now declined to near 2011 levels.

The Oil & Gas sector YTD job total shows 500 (-13.2%) fewer jobs so far this year compared to 2015 YTD following several years of positive movement. Exploration and development efforts by most North Slope oil field developers continues to decline markedly and companies are significantly curtailing investment levels in the face of lower commodity prices resulting from the global oil supply glut. Though there has been some modest good news recently with oil prices breaking the \$50/barrel threshold, uncertainty remains an issue in global markets and prices remain well below levels viewed as profitable by the industry and will not likely recover to even marginally profitable levels in the near term.

The Construction industry, as noted earlier, is showing 400 YTD job losses compared to the same period in 2015. Historically construction employment typically stays flat for the first five months of the year and ramps up in May. Anchorage building permit application values, a measure of interest in construction, have reached \$159.3 million through the May 13 reporting period, well below the \$205.9 million at this point last year. As previously noted in our last report, construction companies continue to express doubts about the strength of the upcoming construction season and appear to be sharpening their pencils more aggressively when bidding on projects. The silver lining of this situation is that projects being bid will likely see lower construction costs as a result, which may be an incentive for companies and government to put more projects out to bid in order to take advantage of the more competitive environment.

#### GOODS PRODUCING JOBS Municipality of Anchorage 2011-Present

<sup>1</sup>Those jobs that are specifically tied to production, not those which support the production or maintenance of the production jobs.



In Anchorage:

**12,400**  
**GOODS PRODUCING JOBS**  
April 2016 (preliminary)

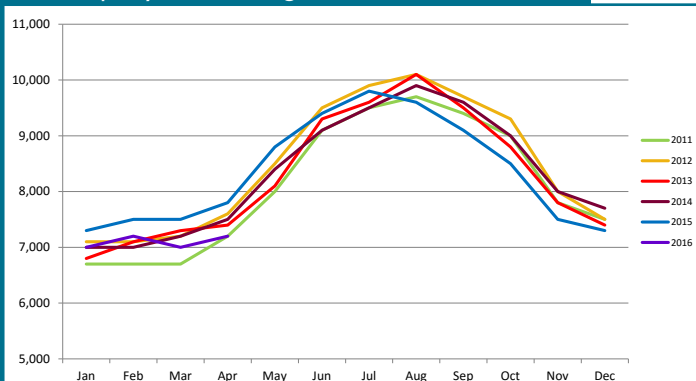


**7,200**  
**CONSTRUCTION JOBS**  
April 2016 (preliminary)

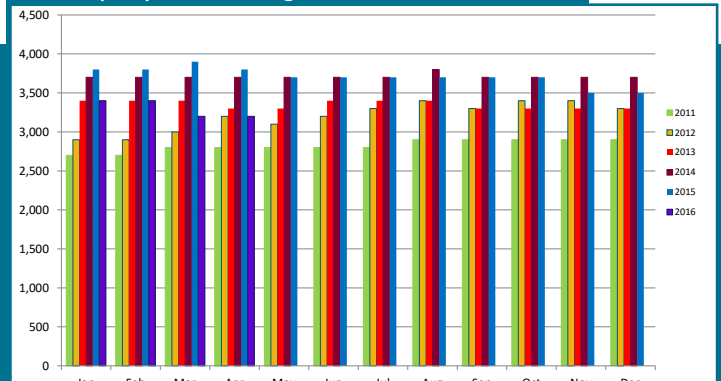


**3,200**  
**OIL & GAS JOBS**  
April 2016 (preliminary)

#### CONSTRUCTION EMPLOYMENT Municipality of Anchorage 2011-Present



#### OIL & GAS EMPLOYMENT Municipality of Anchorage 2011-Present



## SERVICES PROVIDING JOBS

ENGINEERING, RETAIL, TOURISM, HEALTH CARE, ETC.

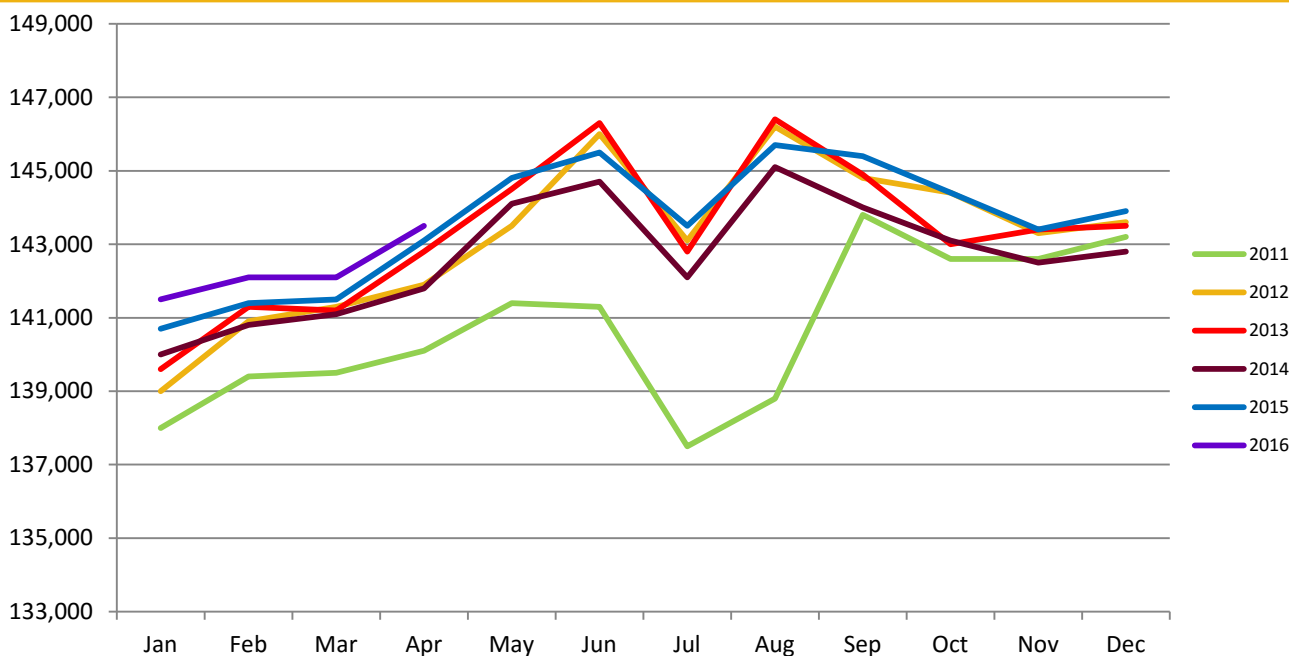
### Services Providing jobs in Anchorage totaled 143,500 for April.

Overall, the Anchorage YTD average is up 600 (+0.4%) jobs from 2015 YTD.

The Trade/Transportation/Utilities (TTU) industry's growth rate is 0.9 percent so far this year. The YTD employment average in this industry is up 300 jobs. The Retail Trade sector, a subset of the TTU industry, is continuing its growth trend in 2016, adding 200 positions YTD compared to 2015 YTD.

The Government jobs monthly average is up 300 jobs YTD from 2015, due to YTD growth of 400 in Federal Government positions and an increase of 200 jobs in Local Government. Meanwhile, the State Government sector is averaging 300 (-2.8%) fewer jobs than at this point last year. State Education jobs, a subset of State Government, have decreased by 100 YTD.

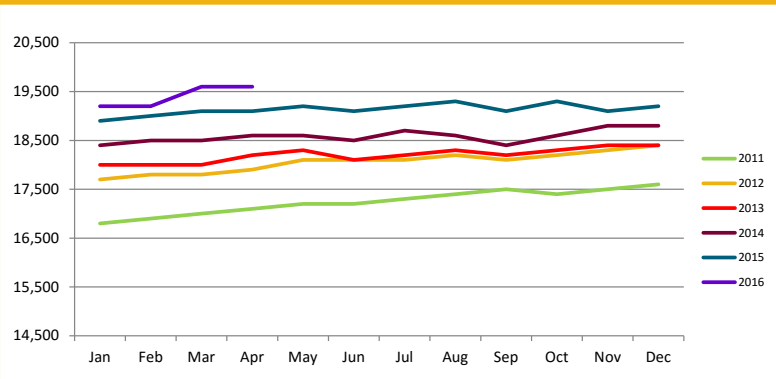
### SERVICES PROVIDING JOBS Municipality of Anchorage 2011-Present



## HEALTH CARE EMPLOYMENT

Employment in the Health Care sector continues to do well, with 400 (+2.1%) more jobs over 2015 YTD. Every year since 2003, this sector has seen year-over-year growth and the increasing rate of job growth seen so far in 2016 indicates another positive year for Health Care. Anchorage health care providers are indicating that the hospitals are continuing to recruit staff with specialized skills, but the bulk of hiring in recent months has been in primary care or private offices. As noted in AEDC's 2016 Economic Forecast report, this sector will be one of the bright points in an uncertain year for job growth.

### HEALTH CARE EMPLOYMENT Municipality of Anchorage 2011-Present



**19,600**  
**HEALTH CARE JOBS**  
April 2016 (preliminary)

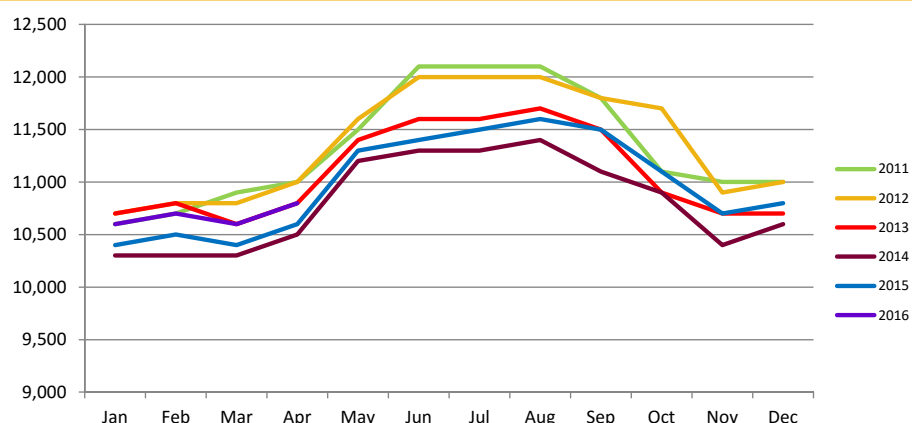
## SERVICES PROVIDING JOBS, CONT.

### TRANSPORTATION

Monthly estimates in the Transportation/Warehouse/Utilities sector (a sub-group of the Trade/Transportation/Utilities industry) continues to show growth with 200 (+1.9%) jobs more YTD.

Given the continued, if somewhat erratic growth projected in the national economy and the positive effect this has on the air cargo industry, combined with a strong visitor season for Alaska projected to bring over 2 million visitors in 2016, this segment of the Trade/Transportation/Utilities industry will help bolster the overall jobs total.

#### TRANSPORTATION/WAREHOUSE/UTILITIES EMPLOYMENT Municipality of Anchorage 2011-Present



**10,800**

**TRANSPORTATION/WAREHOUSE/UTILITIES JOBS**

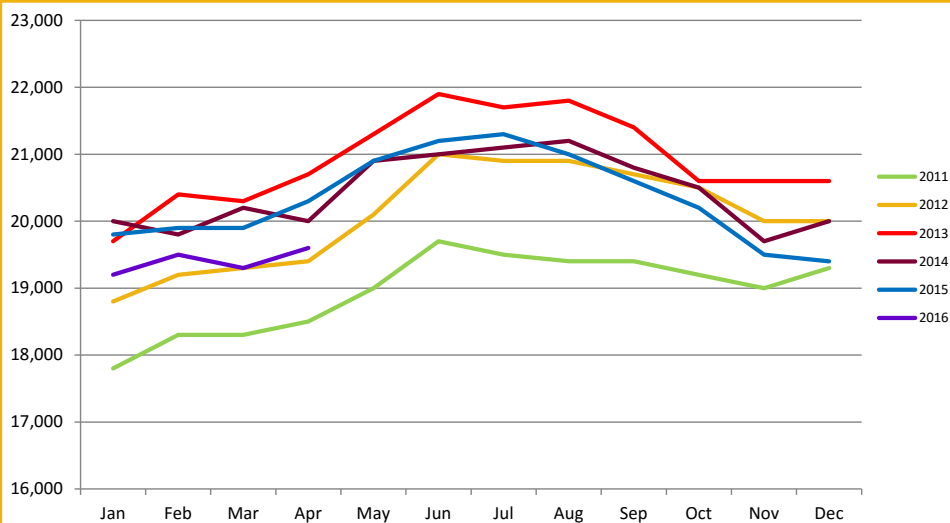
April 2016 (preliminary)

### PROFESSIONAL & BUSINESS SERVICES

ENGINEERING, ARCHITECTURE, LEGAL SERVICES, ACCOUNTING, SCIENTIFIC RESEARCH, WASTE MANAGEMENT & ADMINISTRATIVE SERVICES

Professional and Business Services has now dropped 600 (-3.0%) jobs YTD from 2015. Significant reductions in state capital budgets, combined with announced investment reductions by several oil field companies give clear insight to the cause of this industry's decreases. While there are bright spots for new construction projects such as the recently approved municipal road, parks and public safety bonds, the outlook is that this trend will likely continue through 2016 into 2017.

#### PROFESSIONAL & BUSINESS SERVICES EMPLOYMENT Municipality of Anchorage 2011-Present



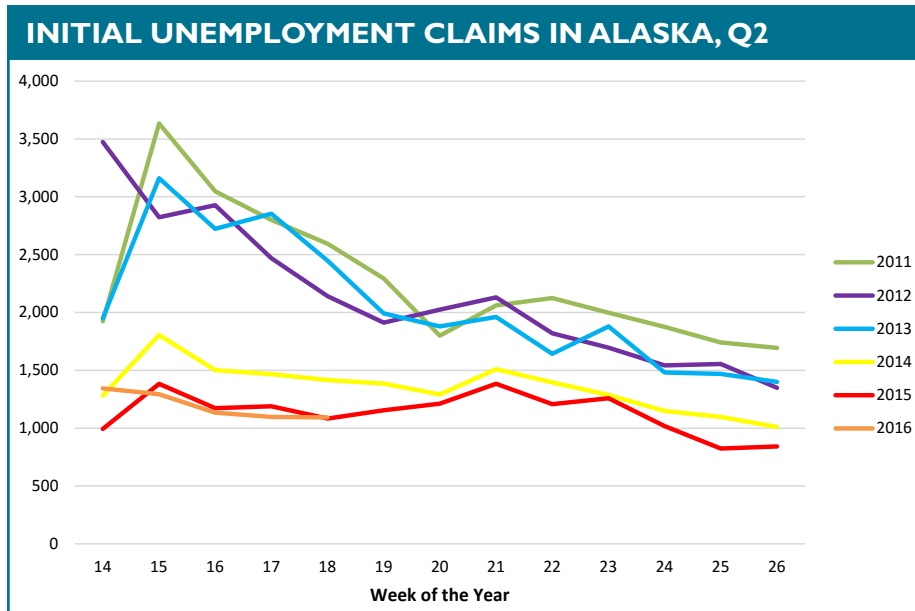
**19,600**

**PROFESSIONAL & BUSINESS SERVICES JOBS**

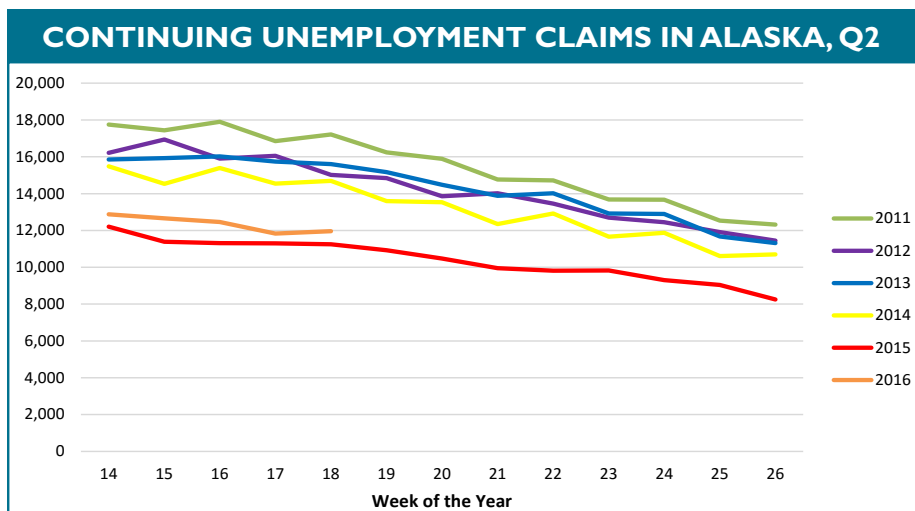
April 2016 (preliminary)

## UNEMPLOYMENT CLAIMS

Initial unemployment claim applications can be interpreted as a proxy for layoffs. They tend to fall as job growth accelerates. As noted in our last report, weekly totals in 2016 continue to track just slightly above 2015 levels, but still well below historic highs since the beginning of the decade. This continuing low range for initial unemployment claims is a sign there is still some momentum remaining in the Alaska and Anchorage economies, even in the face of the recent economic headwinds noted in the media.



Continuing claims figures help to show how well unemployed workers are re-entering the workforce. This total does not include workers receiving extended benefits from the federal government. As we noted in last month's report, weekly numbers in 2016 continue to track slightly above 2015 for the same time period, but still remain well below historic highs reported since the beginning of the decade. This is another indicator of some continuing momentum to be found in the Alaska economy, though we do expect to see a slowing of this momentum reflected in these figures later in the coming year.





# UNEMPLOYMENT ANALYSIS (YTD, 2016)

Anchorage, Mat-Su, Kenai Peninsula Borough

	Jan	Feb	Mar	Apr	May	Jun	Jul	Aug	Sep	Oct	Nov	Dec	16 YTD Avg	15 YTD Avg	16 vs 15 (YTD)
<b>Municipality of Anchorage</b>				Preliminary											
Labor Force	Revised 157,690	Revised 156,738	Revised 156,075	156,282									156,696	160,158	(3,462)
Employment	149,099	147,638	147,451	147,932									148,030	151,886	(3,856)
Unemployment	8,591	9,100	8,624	8,350									8,666	8,272	394
Unemployment Rate	5.4%	5.8%	5.5%	5.3%									5.5%	5.2%	0.4%
<b>Mat-Su Borough</b>															
Labor Force	45,114	44,930	44,632	44,505									44,795	44,502	293
Employment	41,020	40,623	40,522	40,668									40,708	40,715	(7)
Unemployment	4,094	4,307	4,110	3,837									4,087	3,787	300
Unemployment Rate	9.1%	9.6%	9.2%	8.6%									9.1%	8.5%	0.6%
<b>Kenai Peninsula Borough</b>															
Labor Force	26,501	26,513	26,531	26,542									26,522	27,057	(535)
Employment	24,010	23,819	23,975	24,168									23,993	24,682	(689)
Unemployment	2,491	2,694	2,556	2,374									2,529	2,375	154
Unemployment Rate	9.4%	10.2%	9.6%	8.9%									9.5%	8.8%	0.8%
<b>Southcentral Region</b>															
Labor Force	229,305	228,181	227,238	227,329									228,013	231,717	(3,704)
Employment	214,129	212,080	211,948	212,768									212,731	217,283	(4,552)
Unemployment	15,176	16,101	15,290	14,561									15,282	14,434	848
Unemployment Rate	6.6%	7.1%	6.7%	6.4%									6.7%	6.2%	0.5%
<b>State of Alaska</b>															
Labor Force	357,087	356,996	355,942	355,786									356,453	362,290	(5,837)
Employment	330,979	329,475	329,907	331,132									330,373	336,571	(6,198)
Unemployment	26,108	27,521	26,035	24,654									26,080	25,719	361
Unemployment Rate	7.3%	7.7%	7.3%	6.9%									7.3%	7.1%	0.2%

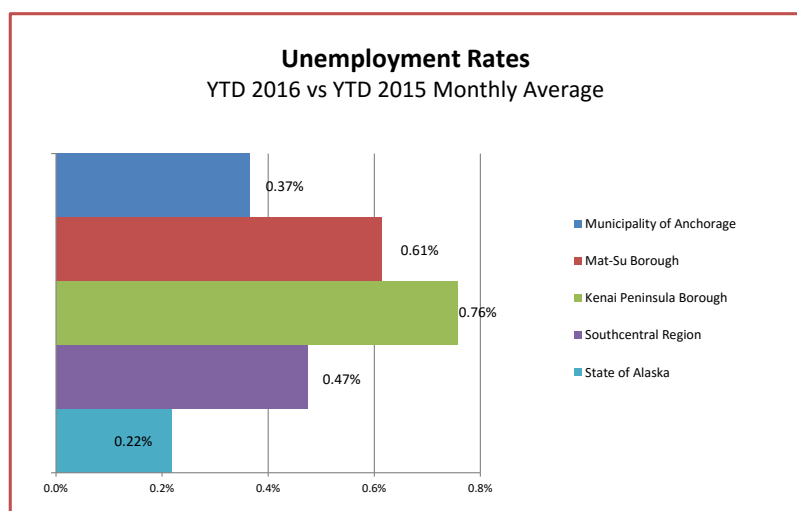
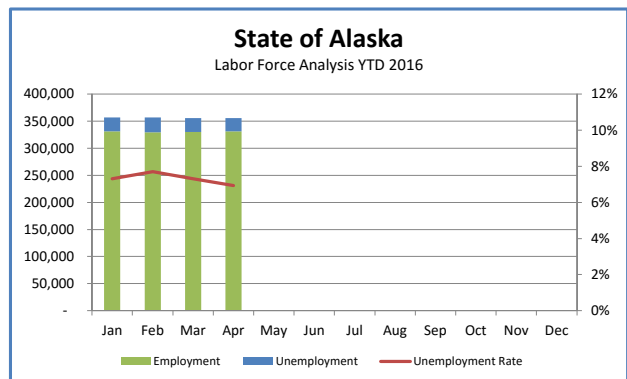
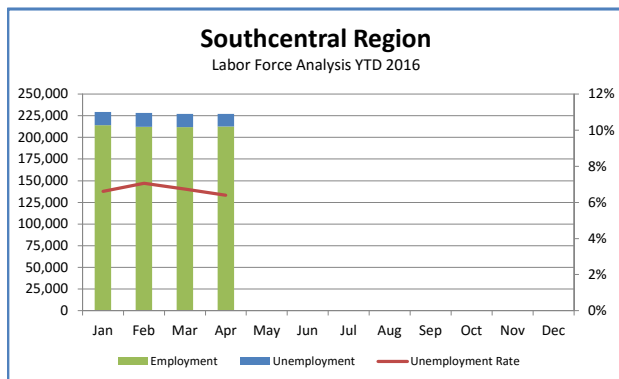
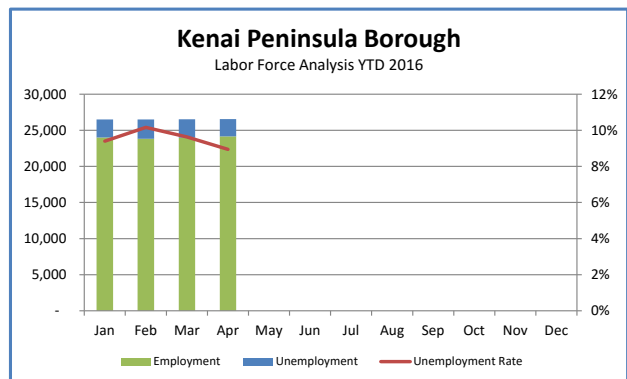
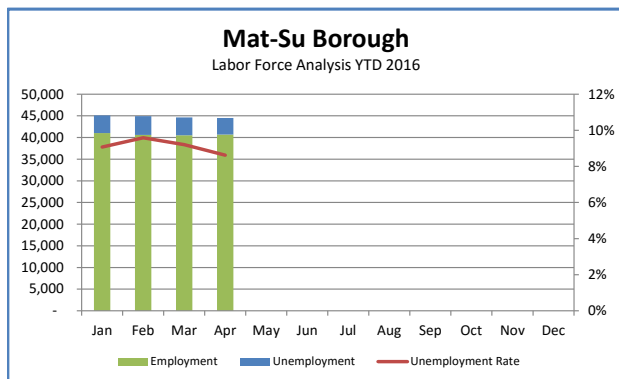
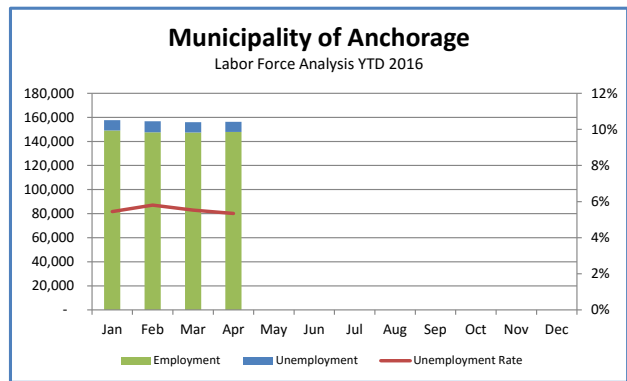
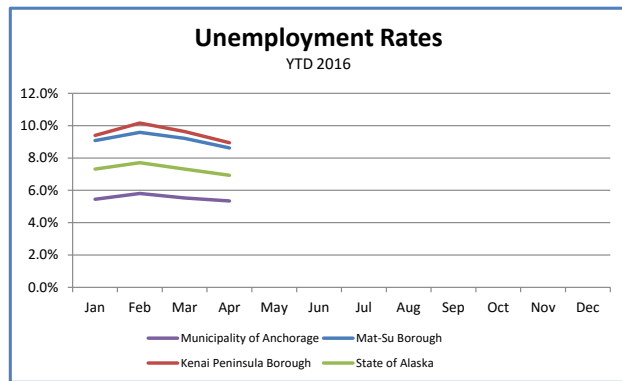
\*Note: These numbers reflect employment, unemployment, etc. for only those people that are residence of the specified City/Region, thus are not inclusive of people who commute to another city for their jobs.  
(Ex: Someone lives in Wasilla but works in Anchorage. They would be counted in the Mat-Su Borough's labor force and employment numbers, not the Municipality of Anchorage numbers)



**AEDC**  
Anchorage Economic  
Development Corporation



**First National Bank**  
**A L A S K A**  
MEMBER FDIC



# INDUSTRY EMPLOYMENT ESTIMATES 2016

## Municipality of Anchorage

Industry	Jan Revised	Feb Revised	Mar Revised	Apr Preliminary	May	Jun	Jul	Aug	Sep	Oct	Nov	Dec	2016 YTD Avg.	2015 YTD Avg.	2016 vs 2015 YTD	% Change
Total Nonfarm	153,900	154,600	154,300	155,900									154,700	155,000	-300	-0.2%
Goods Producing	12,400	12,400	12,400	12,400									12,400	13,300	-900	-6.8%
Services Providing	141,500	142,100	142,100	143,500									142,300	141,700	600	0.4%
Mining and Logging <sup>2</sup>	3,600	3,500	3,400	3,400									3,500	3,900	-400	-10.3%
Oil & Gas	3,400	3,400	3,200	3,200									3,300	3,800	-500	-13.2%
Construction	7,000	7,200	7,000	7,200									7,100	7,500	-400	-5.3%
Manufacturing	1,800	1,800	1,800	1,900									1,800	1,800	0	0.0%
Trade/Transportation/Utilities	33,200	33,100	32,800	33,300									33,100	32,800	300	0.9%
Wholesale Trade	4,700	4,700	4,700	4,800									4,700	4,800	-100	-2.1%
Retail Trade	17,900	17,700	17,500	17,700									17,700	17,500	200	1.1%
Trans/Warehouse/Utilities	10,600	10,700	10,600	10,800									10,700	10,500	200	1.9%
Information	4,100	4,000	4,100	4,100									4,100	4,100	0	0.0%
Financial Activities	7,300	7,300	7,300	7,400									7,300	7,300	0	0.0%
Professional & Business Svcs	19,200	19,500	19,300	19,600									19,400	20,000	-600	-3.0%
Educational & Health Services	25,300	25,500	26,100	26,200									25,800	25,200	600	2.4%
Health Care	19,200	19,200	19,600	19,600									19,400	19,000	400	2.1%
Leisure & Hospitality	16,800	16,900	16,800	16,900									16,900	16,700	200	1.2%
Accommodation	3,200	3,200	3,200	3,300									3,300	3,300	0	0.0%
Food Svcs & Drinking Places	11,400	11,500	11,300	11,500									11,400	11,300	100	0.9%
Other Services	6,000	6,000	6,000	5,900									6,000	6,000	0	0.0%
Government	29,700	29,900	29,700	30,100									29,900	29,600	300	1.0%
Federal Government	8,600	8,700	8,700	8,800									8,700	8,300	400	4.8%
State Government	10,400	10,500	10,500	10,500									10,500	10,800	-300	-2.8%
State Education	2,700	2,800	2,800	2,800									2,800	2,900	-100	-3.4%
Local Government	10,700	10,700	10,500	10,800									10,700	10,500	200	1.9%
Local Education	7,800	7,900	7,600	7,900									7,800	7,700	100	1.3%

- Nonfarm Wage & Salary excludes self-employed workers, fishers, domestics, and unpaid family workers.

- All totals are seasonally non-adjusted totals.

- Government includes employees of public school systems and the University of Alaska.

- Beginning January 2001, wage and salary employment estimates were published under a new classification system. The Standard Industrial Classification system (SIC) has been replaced by the North American Industry Classification System (NAICS). Data prior to 2001 are comparable only at the Total Nonfarm and Government levels.

<sup>1/</sup> As of January 2001, certain federally-recognized tribal entities were moved to Local Government, which created a series break for Total Government and Local Government. Please see the April 2002 Alaska Economic Trends publication for a detailed explanation.

<sup>2/</sup> This category was called "Natural Resources and Mining" in previous years. The change is in name only; the industries it includes remain the same.

- Some totals may not equal components due to rounding.

- Source: Alaska Department of Labor and Workforce Development. Research and Analysis Section

**\* Note:** The above numbers are representative of all people employed in the Municipality of Anchorage, this is inclusive of workers who claim residence outside of the Municipality of Anchorage. (Ex: someone who lives in the Mat-Su, but works in Anchorage would be included in these number)

### Quick Comparisons

16 vs 15 April	-800	-0.51%
16 vs 15 1st Qtr	-100	-0.07%
16 vs 15 2nd Qtr	-800	-0.51%
16 vs 15 3rd Qtr	#DIV/0!	#DIV/0!
16 vs 15 4th Qtr	#DIV/0!	#DIV/0!

# INDUSTRY EMPLOYMENT ESTIMATES 2016

## State of Alaska

	Jan	Feb	Mar	Apr	May	Jun	Jul	Aug	Sep	Oct	Nov	Dec	2016 YTD Avg.	2015 YTD Avg.	2016 vs 2015 YTD Change	% Change
Total Nonfarm	Revised 322,500	Revised 326,200	Revised 327,200	Preliminary 330,700									325,300	327,100	-1,800	-0.6%
Goods Producing	41,400	43,000	43,000	43,100									42,600	46,000	-3,400	-7.4%
Services Providing	281,100	283,200	284,200	287,600									284,000	281,200	2,800	1.0%
Mining and Logging <sup>2</sup>	15,800	15,900	15,500	15,400									15,700	17,600	-1,900	-10.8%
Mining	15,700	15,700	15,400	15,300									15,500	17,500	-2,000	-11.4%
Oil & Gas	12,900	12,900	12,500	12,400									12,700	14,700	-2,000	-13.6%
Construction	14,000	14,200	14,600	15,400									14,600	15,800	-1,200	-7.6%
Manufacturing	11,600	12,900	12,900	12,300									12,400	12,600	-200	-1.6%
Seafood Processing	8,300	9,700	9,700	9,100									9,200	8,900	300	3.4%
Trade/Transportation/Utilities	63,900	63,500	63,500	64,900									64,000	61,900	2,100	3.4%
Wholesale Trade	6,300	6,300	6,200	6,400									6,300	6,500	-200	-3.1%
Retail Trade	37,700	37,200	37,500	37,800									37,600	35,700	1,900	5.3%
Food & Beverage Stores	6,100	6,100	6,000	6,000									6,100	5,800	300	5.2%
General Merchandise Stores	10,800	10,500	10,600	10,700									10,700	10,200	500	4.9%
Trans/Warehouse/Utilities	19,900	20,000	19,800	20,700									20,100	19,800	300	1.5%
Air Transportation	5,400	5,500	5,400	5,700									5,500	5,600	-100	-1.8%
Information	6,200	6,100	6,100	6,100									6,100	6,300	-200	-3.2%
Telecommunications	4,200	4,100	4,100	4,100									4,100	4,300	-200	-4.7%
Financial Activities	12,100	12,200	12,200	12,100									12,200	11,700	500	4.3%
Professional & Business Svcs	27,600	27,700	28,300	28,400									28,000	29,300	-1,300	-4.4%
Educational & Health Services	48,000	48,700	49,100	49,200									48,800	47,100	1,700	3.6%
Health Care	35,000	35,700	35,900	36,000									35,700	34,300	1,400	4.1%
Leisure & Hospitality	30,100	30,700	30,500	31,800									30,800	30,600	200	0.7%
Accommodation	6,100	6,800	6,800	7,200									6,600	6,500	100	1.5%
Food Svcs & Drinking Places	20,100	20,300	19,600	20,300									20,100	20,100	0	0.0%
Other Services	11,700	11,700	11,600	11,500									11,600	11,500	100	0.9%
Government	81,500	82,600	82,900	83,600									82,700	82,800	-100	-0.1%
Federal Government	14,600	14,700	15,000	15,100									14,900	14,400	500	3.5%
State Government	24,900	25,200	25,400	25,600									25,300	26,600	-1,300	-4.9%
State Education	7,700	8,100	8,100	8,200									8,000	8,500	-500	-5.9%
Local Government	42,000	42,700	42,500	42,900									42,500	41,900	600	1.4%
Local Education	23,700	24,100	24,000	24,300									24,000	24,100	-100	-0.4%
Tribal Government <sup>1</sup>	3,600	3,600	3,600	3,700									3,600	3,500	100	2.9%

- Nonfarm Wage & Salary excludes self-employed workers, fishers, domestics, and unpaid family workers.

- All totals are non-seasonally adjusted totals.

- Government includes employees of public school systems and the University of Alaska.

- Beginning January 2001, wage and salary employment estimates were published under a new classification system (SIC) has been replaced by the North American Industry Classification System (NAICS). Data prior to 2001 are comparable only at the Total Nonfarm and Government levels.

1/ As of January 2001, certain federally-recognized tribal entities were moved to Local Government, which created a series break for Total Government and Local Government. Please see the April 2002 Alaska Economic Trends publication for a detailed explanation.

2/ This category was called "Natural Resources and Mining" in previous years. The change is in name only; the industries it includes remain the same.

- Totals may not equal sub-sections due to rounding.

- Source: Alaska Department of Labor and Workforce Development, Research and Analysis Section

Quick Comparisons				
16 vs 15	-2,500	-0.75%		
March				
16 vs 15	200	0.06%		
1st Qtr				
16 vs 15	-2,500	-0.73%		
2nd Qtr				
16 vs 15	#DIV/0!	#DIV/0!		
3rd Qtr				
16 vs 15	#DIV/0!	#DIV/0!		
4th Qtr				



## Press Release

## COMMISSIONER'S OFFICE

May 20, 2016

No. 16-21

For more information: Caroline Schultz, Economist  
907-465-6027, [Caroline.Schultz@Alaska.Gov](mailto:Caroline.Schultz@Alaska.Gov)

### Unemployment rate remains at 6.6 percent in April

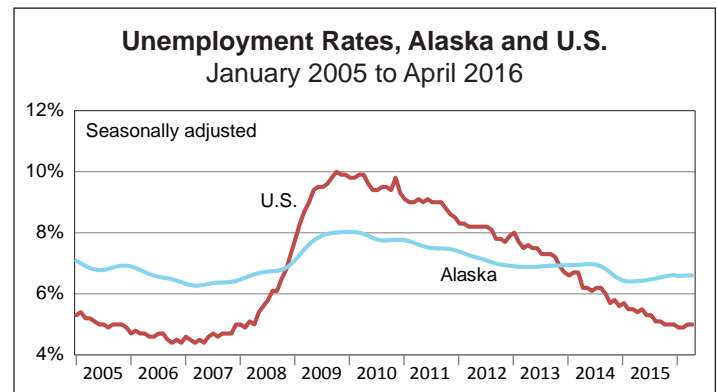
JUNEAU, Alaska— Alaska's seasonally adjusted unemployment rate was 6.6 percent in April, unchanged from the previous month. The comparable U.S. rate was 5.0 percent.

The state's adjusted rate has held steady at 6.6 percent since October of last year. This suggests that the impacts of job losses in the oil and gas industry and state government have not yet spread through the broader economy.

April's unadjusted rate was 6.9 percent, down four-tenths of a percentage point from March's 7.3 percent. This is a typical seasonal decrease in the unadjusted rate as Alaska's economy gears up for summer construction, fishing and tourism.

Around the state, unadjusted unemployment rates fell in most boroughs and census areas in April. The eight areas where rates rose were in the southwest and northern parts of the state that have different seasonal patterns due to winter groundfish fisheries and construction.

Preliminary estimates of Alaska's April job counts show a loss of 2,500 jobs from the same month in 2015, driven by large declines in oil and gas industry and state government employment. Employment levels in



#### Unemployment Rates, Seasonally Adjusted

	4/16	3/16	4/15
Alaska	6.6%	6.6%	6.4%
U.S.	5.0%	5.0%	5.4%

Sources: Alaska Department of Labor and Workforce Development, Research and Analysis Section; and U.S. Bureau of Labor Statistics

the construction and professional and business services sectors also shrank, likely due to oil-related cuts. Losses were partially offset by job growth in the health care and retail sectors.

For detailed employment estimates, see <http://live.laborstats.alaska.gov/ces/>. The estimates are preliminary and subject to potentially large revisions. For more information on unemployment rates around the state, see [live.laborstats.alaska.gov/labforce/](http://live.laborstats.alaska.gov/labforce/).

###

## Labor Force by Borough and Census Area, Not Seasonally Adjusted<sup>1</sup>

	Civilian Labor Force			Unemployed					
	4/16 <sup>P</sup>	3/16	4/15	Number			Rate		
				4/16 <sup>P</sup>	3/16	4/15	4/16 <sup>P</sup>	3/16	4/15
<b>Alaska</b>	<b>355,786</b>	<b>355,942</b>	<b>359,279</b>	<b>24,654</b>	<b>26,035</b>	<b>23,709</b>	<b>6.9</b>	<b>7.3</b>	<b>6.6</b>
<b>Anchorage/Mat-Su Region</b>	<b>200,787</b>	<b>200,707</b>	<b>201,621</b>	<b>12,187</b>	<b>12,734</b>	<b>11,441</b>	<b>6.1</b>	<b>6.3</b>	<b>5.7</b>
Anchorage, Municipality	156,282	156,075	157,044	8,350	8,624	7,903	5.3	5.5	5.0
Matanuska-Susitna Borough	44,505	44,632	44,577	3,837	4,110	3,538	8.6	9.2	7.9
<b>Gulf Coast Region</b>	<b>37,578</b>	<b>37,546</b>	<b>37,772</b>	<b>3,131</b>	<b>3,356</b>	<b>2,900</b>	<b>8.3</b>	<b>8.9</b>	<b>7.7</b>
Kenai Peninsula Borough	26,542	26,531	26,666	2,374	2,556	2,154	8.9	9.6	8.1
Kodiak Island Borough	6,513	6,689	6,543	305	303	292	4.7	4.5	4.5
Valdez-Cordova Census Area	4,523	4,326	4,563	452	497	454	10.0	11.5	9.9
<b>Interior Region</b>	<b>51,696</b>	<b>51,130</b>	<b>52,270</b>	<b>3,574</b>	<b>3,781</b>	<b>3,333</b>	<b>6.9</b>	<b>7.4</b>	<b>6.4</b>
Denali Borough	632	575	624	107	115	101	16.9	20.0	16.2
Fairbanks North Star Borough	45,573	45,164	46,170	2,705	2,822	2,448	5.9	6.2	5.3
Southeast Fairbanks Census Area	2,961	2,955	2,938	328	365	321	11.1	12.4	10.9
Yukon-Koyukuk Census Area	2,530	2,436	2,538	434	479	463	17.2	19.7	18.2
<b>Northern Region</b>	<b>10,828</b>	<b>11,050</b>	<b>11,658</b>	<b>1,254</b>	<b>1,235</b>	<b>1,250</b>	<b>11.6</b>	<b>11.2</b>	<b>10.7</b>
Nome Census Area	3,841	3,942	4,136	519	516	527	13.5	13.1	12.7
North Slope Borough	4,267	4,357	4,608	252	249	242	5.9	5.7	5.3
Northwest Arctic Borough	2,720	2,751	2,914	483	470	481	17.8	17.1	16.5
<b>Southeast Region</b>	<b>35,454</b>	<b>35,055</b>	<b>36,373</b>	<b>2,298</b>	<b>2,697</b>	<b>2,437</b>	<b>6.5</b>	<b>7.7</b>	<b>6.7</b>
Haines Borough	963	963	978	114	144	105	11.8	15.0	10.7
Hoonah-Angoon Census Area	1,033	978	1,079	154	187	179	14.9	19.1	16.6
Juneau, City and Borough	16,808	16,604	17,231	746	804	801	4.4	4.8	4.6
Ketchikan Gateway Borough	6,521	6,337	6,687	466	539	488	7.1	8.5	7.3
Petersburg Borough	1,330	1,435	1,373	122	153	134	9.2	10.7	9.8
Prince of Wales-Hyder Census Area	2,634	2,646	2,717	327	394	351	12.4	14.9	12.9
Sitka, City and Borough	4,241	4,275	4,331	200	222	196	4.7	5.2	4.5
Skagway, Municipality	634	588	651	79	134	83	12.5	22.8	12.7
Wrangell, City and Borough	1,028	1,002	1,052	75	95	78	7.3	9.5	7.4
Yakutat, City and Borough	262	227	274	15	25	22	5.7	11.0	8.0
<b>Southwest Region</b>	<b>19,442</b>	<b>20,457</b>	<b>19,586</b>	<b>2,211</b>	<b>2,234</b>	<b>2,347</b>	<b>11.4</b>	<b>10.9</b>	<b>12.0</b>
Aleutians East Borough	2,712	3,072	2,720	66	71	75	2.4	2.3	2.8
Aleutians West Census Area	4,167	4,743	4,205	145	112	180	3.5	2.4	4.3
Bethel Census Area	7,052	7,113	7,087	1,039	1,056	1,078	14.7	14.8	15.2
Bristol Bay Borough	282	236	295	31	36	42	11.0	15.3	14.2
Dillingham Census Area	1,944	1,952	1,929	212	208	193	10.9	10.7	10.0
Kusilvak Census Area	2,727	2,785	2,800	622	660	694	22.8	23.7	24.8
Lake and Peninsula Borough	558	556	550	96	91	85	17.2	16.4	15.5

P = Preliminary. As more information becomes available, data are revised every month for the previous month and again at the end of every calendar year.

Note: The official definition of unemployment excludes anyone who has not made an active attempt to find work in the four-week period up to and including the week that includes the 12th of the reference month. Many in rural Alaska do not meet the definition because they have not conducted an active job search due to the scarcity of employment opportunities.

<sup>1</sup>Unemployment rates that are not seasonally adjusted should not be compared with those that are.

Source: Alaska Department of Labor and Workforce Development, Research and Analysis Section; and U.S. Bureau of Labor Statistics



AEDC  
**Anchorage Economic**  
Development Corporation