

Fourth Edition 2016 - May



AEDC

Anchorage Economic  
Development Corporation

# Anchorage Employment Report

Sponsored by:



**First National Bank**

**A L A S K A**

MEMBER FDIC

TABLE OF CONTENTS

EXECUTIVE SUMMARY.....3

GOODS PRODUCING JOBS SUMMARY .....4

SERVICES PROVIDING JOBS SUMMARY .....5

    HEALTH CARE SNAPSHOT .....5

    TRANSPORTATION SNAPSHOT .....6

    PROFESSIONAL & BUSINESS SERVICES SNAPSHOT .....6

UNEMPLOYMENT CLAIMS.....7

UNEMPLOYMENT ANALYSIS OF SOUTHCENTRAL REGION (TABLE).....8

    LABOR FORCE ANALYSIS CHARTS.....9

ANCHORAGE EMPLOYMENT ESTIMATES TABLE ..... 10

ALASKA EMPLOYMENT ESTIMATES TABLE..... 11

ALASKA DEPARTMENT OF LABOR PRESS RELEASE..... 12

All data referenced in this employment report is from the State of Alaska, Dept. of Labor & Workforce Development website: [www.laborstats.alaska.gov](http://www.laborstats.alaska.gov) and from the U.S. Bureau of Labor Statistics: [www.bls.gov](http://www.bls.gov).

**Report compiled by Anchorage Economic Development Corp. Research Department.**

**Report generously sponsored by First National Bank Alaska.**

If you are interested in learning more about this data or are interested in how AEDC can help you develop a report, call AEDC at 907.258.3700.

## EXECUTIVE SUMMARY

### MONTHLY UNEMPLOYMENT

The not seasonally adjusted unemployment rate for Anchorage in May was 5.3 percent, unchanged from the April revised rate. **This is above the national rate of 4.5 percent and below the statewide not seasonally adjusted rate of 6.6 percent.** The May unemployment rate for Anchorage was 0.4 percent higher than it was in May 2015. *As always, it should be noted that these are preliminary survey figures for May and will be revised next month.*

# 5.3%

May 2016

Unemployment Rate  
for Anchorage (preliminary)

### YEAR-TO-DATE UNEMPLOYMENT

The average year-to-date (YTD) not seasonally adjusted unemployment rate in Anchorage was 5.5 percent at the end of May, 0.3 percent higher than at this time last year. **A decrease of 3,566 in the employment total and 3,245 in the Anchorage labor force during the YTD period has resulted in the reported unemployment total increasing by 321.** The total number of unemployed people in Anchorage for the month of May is estimated at 8,311 (those actively looking for jobs), 207 more than May 2015. In the Mat-Su Borough, the YTD average monthly unemployment rate of 8.9 percent is up 0.4 percent from 2015 YTD while the Kenai Peninsula's has increased by 0.5 percent during the same period (see the charts on pages 8-9 for more details).

# 5.5%

2016 YTD

Unemployment Rate  
for Anchorage (preliminary)

*It is important to note that the Anchorage unemployment numbers represent the labor force residing in Anchorage and do not describe the number of filled positions in Anchorage. The industry employment estimates referenced in the remainder of this report are representative of the number of jobs in the Municipality of Anchorage, regardless of the job holder's place of residency.*

### ANCHORAGE INDUSTRY EMPLOYMENT ESTIMATES

As for Anchorage industry employment estimates, which include total jobs in Anchorage held by city residents and commuters, the YTD average for 2016 shows a loss of 500 jobs (-0.3%) so far compared to the same period in 2015. The private sector (total jobs minus government jobs) shrunk by 700 (-0.6%) jobs during this time, while Government employment has increased by 200 (+0.7%). Federal jobs have increased by 300 (+3.6%) so far. State government jobs have decreased by 300 (-2.8%) and Local Government jobs have increased by 200 (+1.9%). Please note that these figures will likely be revised as more data is received and additional analysis is conducted.

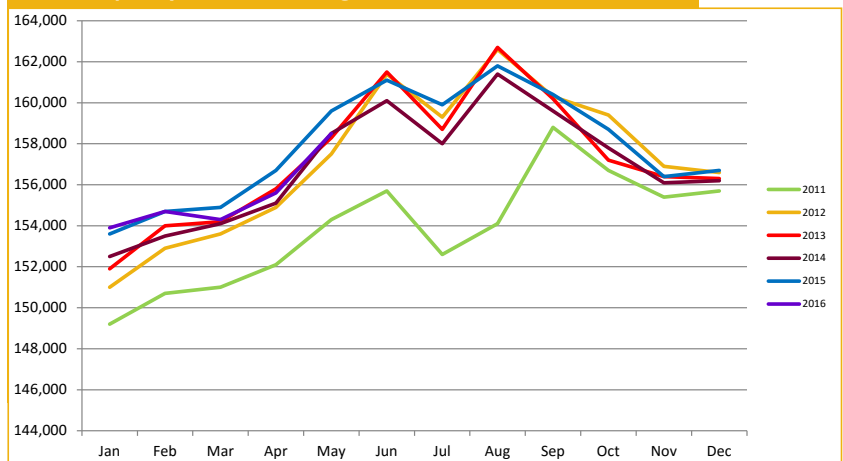
The Goods Producing category lost 1,000 jobs YTD (-7.4%). The Mining & Logging industry (which includes Oil & Gas employment) continues to decline locally and is showing 400 fewer jobs (-10.3%). Construction is down 500 jobs YTD (-6.4%), while Manufacturing remains flat compared to 2015.

Services Providing industries have added 500 jobs YTD (+0.4%). Categories showing increases include Trade/Transportation/Utilities (TTU) up 300 jobs (+0.9%), Health Care up 500 jobs (+2.6%), and Leisure & Hospitality (Tourism) up 100 jobs (+0.6%). Services Providing industries showing losses so far in 2016 include Financial Activities down 100 jobs (-1.4%) and Professional & Business Services down 600 jobs (-3.0%).

# 158,500

Total jobs in Anchorage  
May 2016 (preliminary)

### ANCHORAGE EMPLOYMENT Municipality of Anchorage 2011-Present



## GOODS PRODUCING JOBS

### CONSTRUCTION WORK, MINING, OIL & GAS PRODUCTION, MANUFACTURING

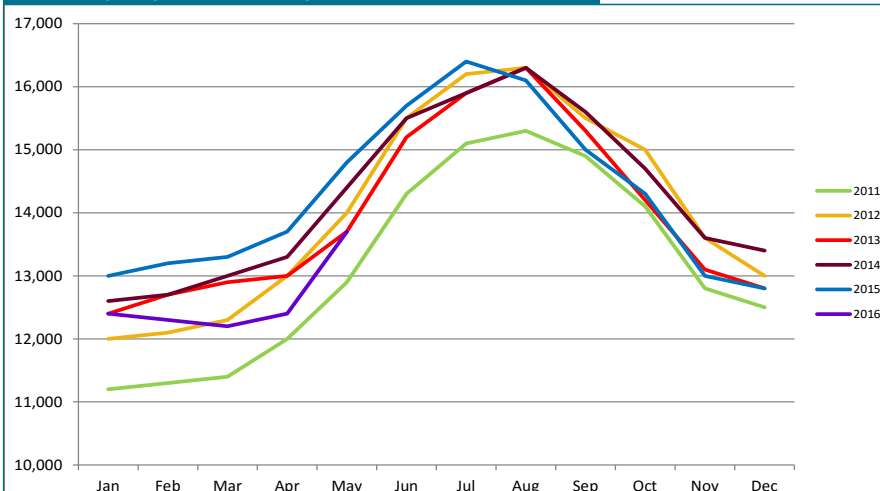
Growth in the number of Goods Producing<sup>1</sup> jobs in Anchorage is continuing its downward trend 2016 YTD. The year to date average of 12,600 is 1,000 (-7.4%) fewer jobs than the same period in 2015. The Mining & Logging industry, which includes Oil & Gas employment, saw a decrease of 400 (-10.3%) jobs. YTD Construction employment is down 500 (-6.4%) jobs. Manufacturing remains flat at 1,900 jobs. Total Anchorage Goods Producing employment has now declined to near 2011 levels.

The Oil & Gas sector YTD job total shows 500 (-13.2%) fewer jobs so far this year compared to 2015 YTD following several years of positive movement. Statewide, Oil & Gas industry YTD employment is down 2,000 jobs (-13.7%) compared to the same period in 2015. The recent good news of oil prices breaking the \$50/barrel threshold could be signaling a curtailing of the sharp employment cutbacks seen in recent months, though more layoffs are likely to some degree, especially with continued price volatility even in the face of recent price increases. Oil markets continue to seek balance, with many analysts beginning to project that balance being reached later this year in the third or fourth quarter at prices in the \$50-\$60/barrel range.

The Construction industry, as noted earlier, is showing 500 YTD job losses compared to the same period in 2015. Historically construction employment ramps up in May and we have seen an increase of 1,100 construction jobs since April. Anchorage building permit application values, a measure of interest in construction, have reached \$238.8 million through the June 3 reporting period, 1.4% above the \$235.4 million at this point last year. As previously noted in our last report, competition is fierce among construction companies when bidding on projects. The good news is that, so far this year, building permit values are on par with the same period in 2015.

#### GOODS PRODUCING JOBS Municipality of Anchorage 2011-Present

<sup>1</sup>Those jobs that are specifically tied to production, not those which support the production or maintenance of the production jobs.



In Anchorage:

**13,700**  
**GOODS PRODUCING JOBS**  
May 2016 (preliminary)

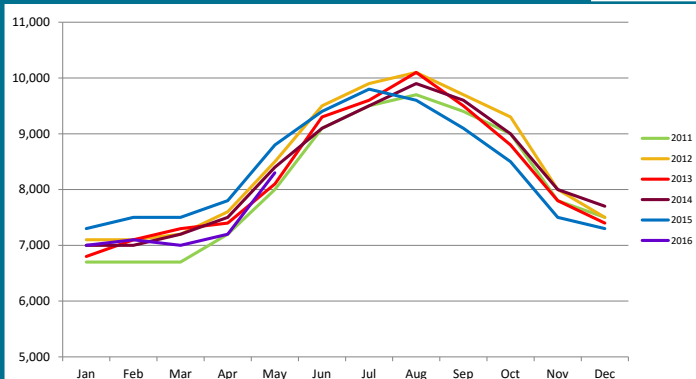


**8,300**  
**CONSTRUCTION JOBS**  
May 2016 (preliminary)

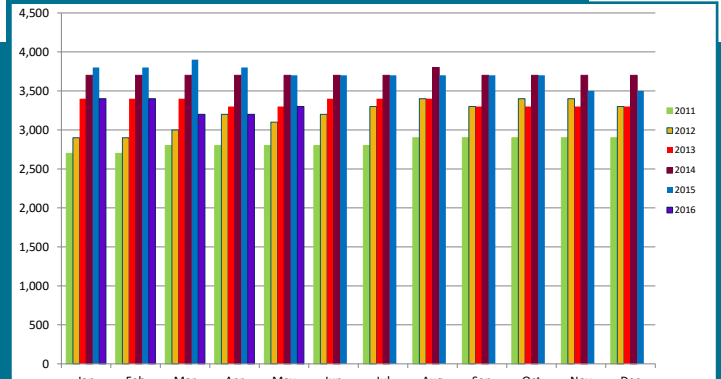


**3,300**  
**OIL & GAS JOBS**  
May 2016 (preliminary)

#### CONSTRUCTION EMPLOYMENT Municipality of Anchorage 2011-Present



#### OIL & GAS EMPLOYMENT Municipality of Anchorage 2011-Present



## SERVICES PROVIDING JOBS

ENGINEERING, RETAIL, TOURISM, HEALTH CARE, ETC.

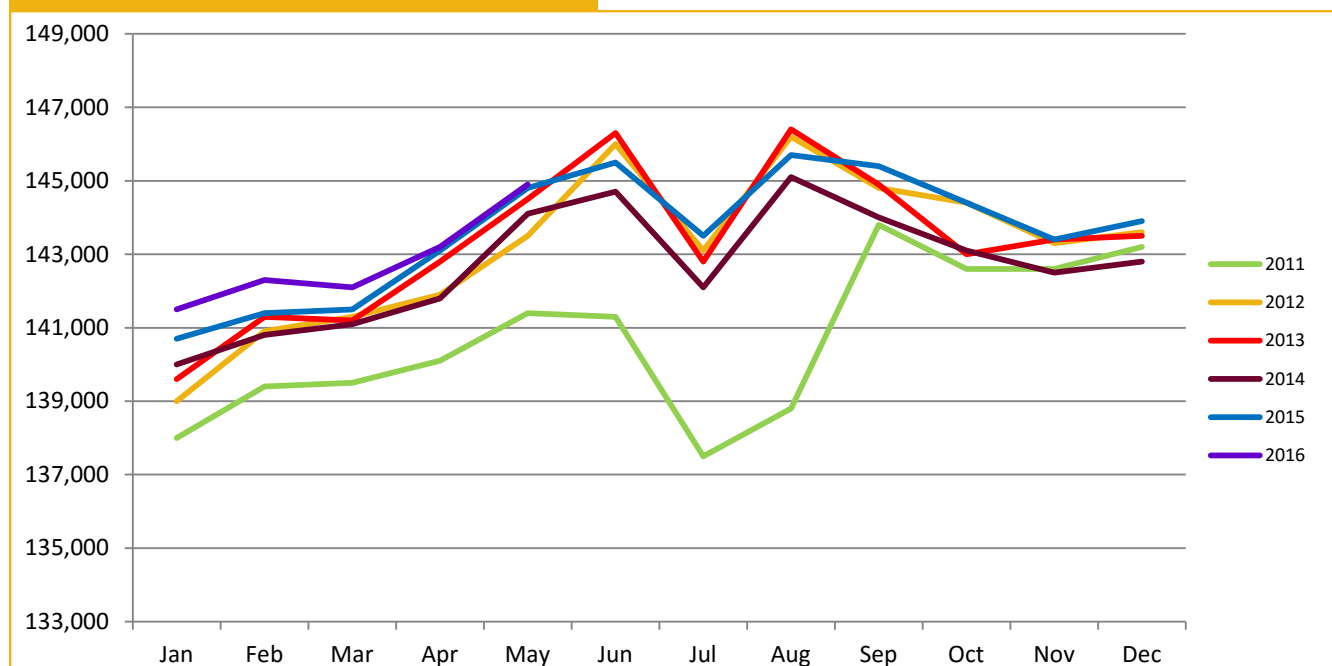
### Services Providing jobs in Anchorage totaled 144,900 for May.

Overall, the Anchorage YTD average is up 500 (+0.4%) jobs from 2015 YTD.

The Trade/Transportation/Utilities (TTU) industry's growth rate is 0.9 percent so far this year. The YTD employment average in this industry is up 300 jobs this year. The Retail Trade sector, a subset of the TTU industry, is continuing its growth trend in 2016, adding 200 positions YTD compared to 2015 YTD.

The Government jobs monthly average is up 200 jobs YTD from 2015 due to YTD growth of 300 in Federal Government positions. The State Government sector is averaging 300 (-2.8%) fewer jobs than at this point last year, while Local Government positions have increased by 200. State Education jobs, a subset of State Government, have decreased by 100 YTD.

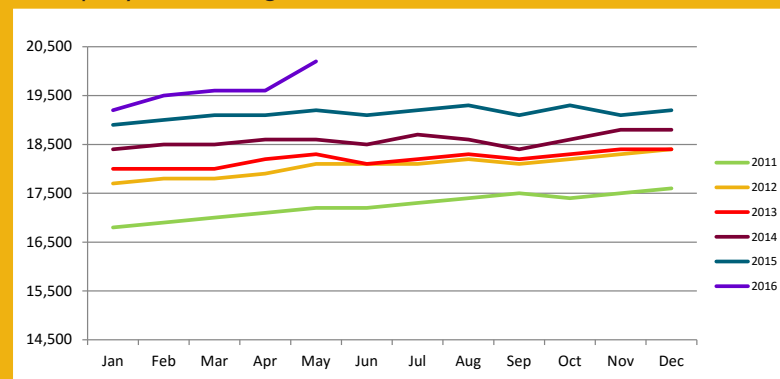
### SERVICES PROVIDING JOBS Municipality of Anchorage 2011-Present



## HEALTH CARE EMPLOYMENT

Employment in the Health Care sector continues to do well, with 500 (+2.6%) more jobs over 2015 YTD. It is interesting to note that Health Care employment in May grew by 1,000 jobs compared to May, 2015. It is unclear what has driven this sudden significant jump in Health Care employment and may be a data anomaly. This is a preliminary figure and subject to revision in next month's report. As noted in AEDC's 2016 Economic Forecast report, this sector will be one of the bright points in an uncertain year for job growth.

### HEALTH CARE EMPLOYMENT Municipality of Anchorage 2011-Present



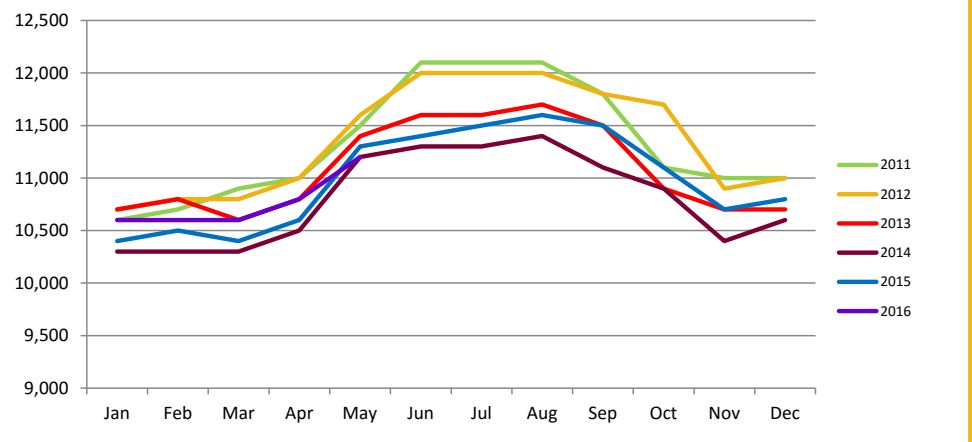
**20,200**  
**HEALTH CARE JOBS**  
May 2016 (preliminary)

## SERVICES PROVIDING JOBS, CONT.

### TRANSPORTATION

Monthly estimates in the Transportation/Warehouse/Utilities sector (a sub-group of the Trade/Transportation/Utilities industry) continues to show growth with 200 (+1.9%) jobs more YTD. Ongoing volatility in national economic indicators continue to point to somewhat erratic growth projected in the national economy; however, the air cargo industry, combined with a strong visitor season for Alaska projected to bring over 2 million visitors in 2016, underscores that this segment of the Trade/Transportation/Utilities industry will add to the overall jobs total.

#### TRANSPORTATION/WAREHOUSE/UTILITIES EMPLOYMENT Municipality of Anchorage 2011-Present



11,200

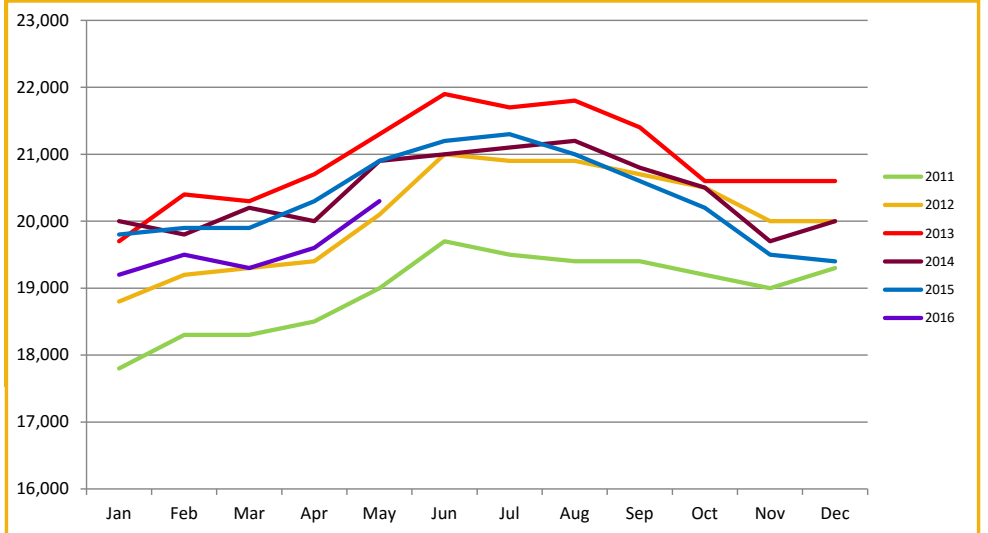
**TRANSPORTATION/WAREHOUSE/UTILITIES JOBS**  
May 2016 (preliminary)

### PROFESSIONAL & BUSINESS SERVICES

ENGINEERING, ARCHITECTURE, LEGAL SERVICES, ACCOUNTING, SCIENTIFIC RESEARCH, WASTE MANAGEMENT & ADMINISTRATIVE SERVICES

Professional and business services has now dropped 600 (-3.0%) jobs YTD from 2015. Significant reductions in state capital budgets, combined with announced investment reductions by several oil field companies give clear insight to the cause of this industry's decreases. While there are bright spots for new construction projects such as the \$51.5 million Southcentral Foundation dental facility at the Alaska Native Medical Center Campus, the outlook is that tougher times in this industry will continue through 2016 into 2017.

#### PROFESSIONAL & BUSINESS SERVICES EMPLOYMENT Municipality of Anchorage 2011-Present

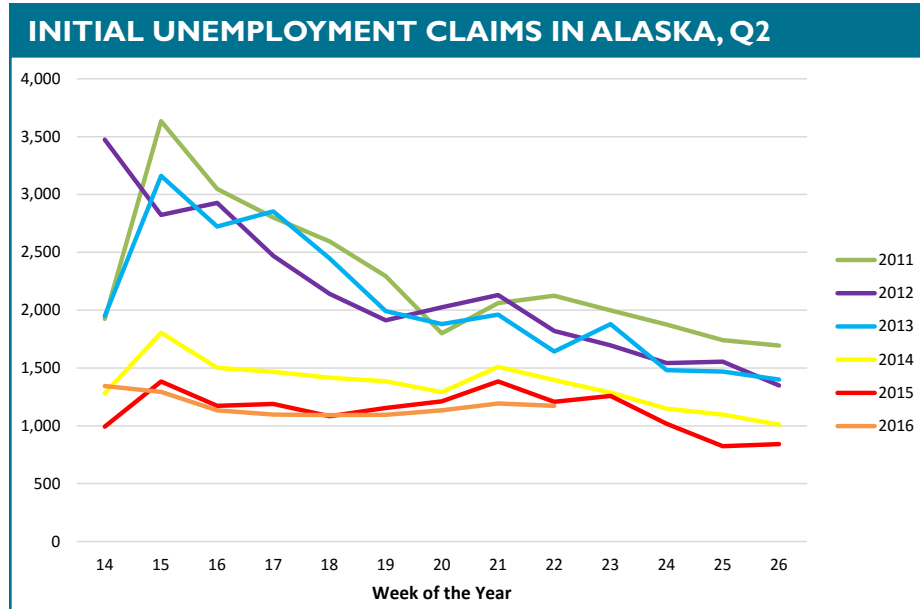


20,300

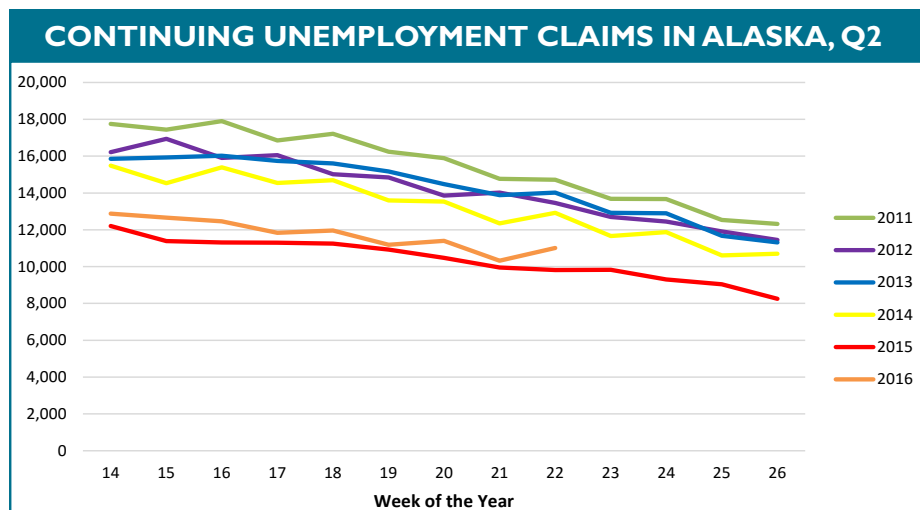
**PROFESSIONAL & BUSINESS SERVICES JOBS**  
May 2016 (preliminary)

## UNEMPLOYMENT CLAIMS

Initial unemployment claim applications can be interpreted as a proxy for layoffs. They tend to fall as job growth accelerates. As noted in our last report, weekly totals in 2016 continue to track 2015 levels, still well below recent historic highs seen in 2011. This continuing low range for initial unemployment claims is a sign there is still some momentum in the short term remaining in the Alaska and Anchorage economies, even in the face of the recent economic headwinds; however, depending on what form the State budget takes when finally signed into law, significant state government layoffs are likely after July 1 which will likely impact this indicator. To what degree is still unclear.



Continuing claims figures help to show how well unemployed workers are re-entering the workforce. This total does not include workers receiving extended benefits from the federal government. As we noted in last month's report, weekly numbers in 2016 continue to track slightly above 2015 for the same time period, but still remain well below recent historic highs reported in 2011. This is another indicator of some continuing momentum to be found in the Alaska economy, though we do expect to see a slowing of this momentum reflected in these figures later in the coming year. Declining job numbers will affect the ability to find jobs for those workers included in this metric. This will likely result in an increase in the numbers of workers receiving unemployment benefits in the long term, though to what degree is difficult to project.



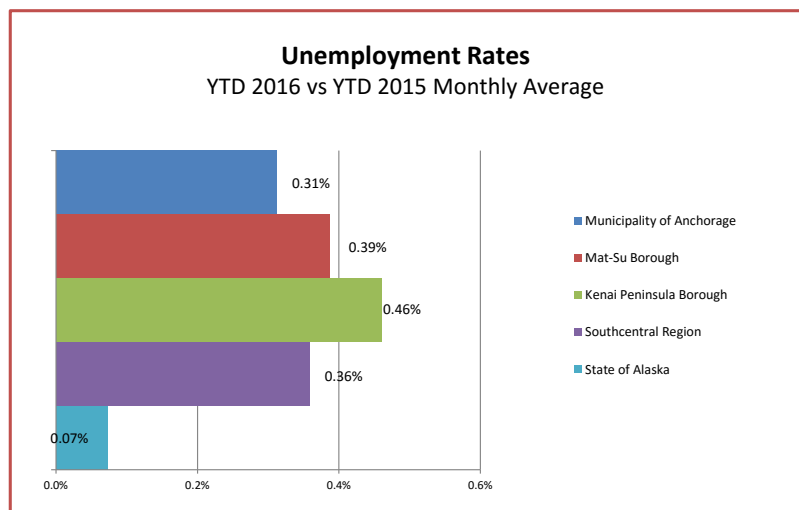
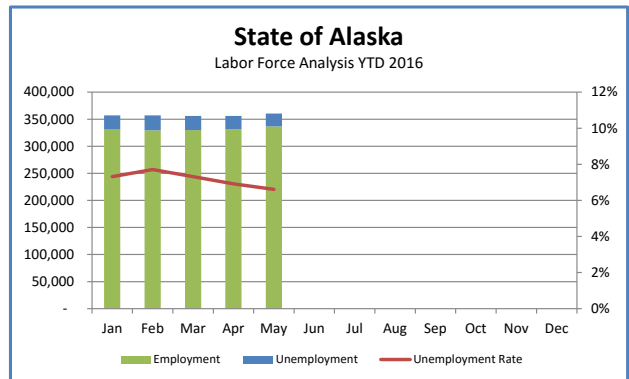
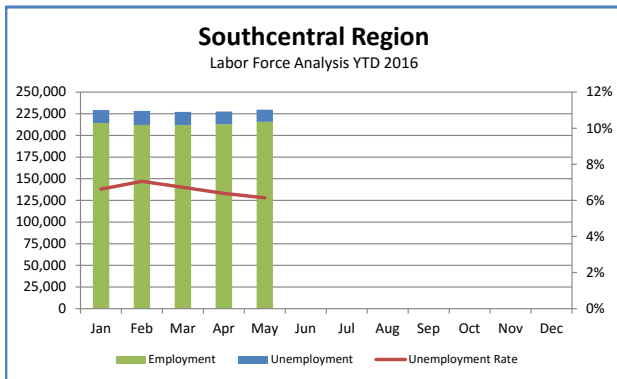
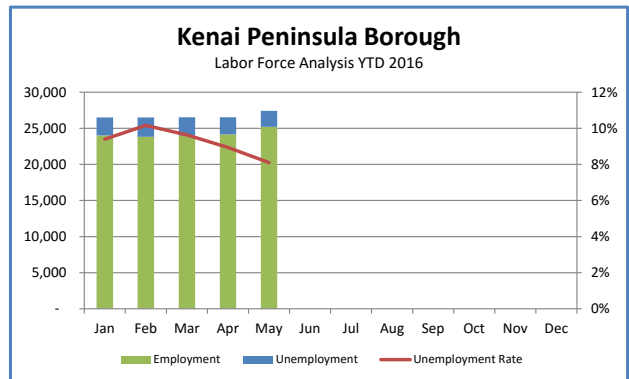
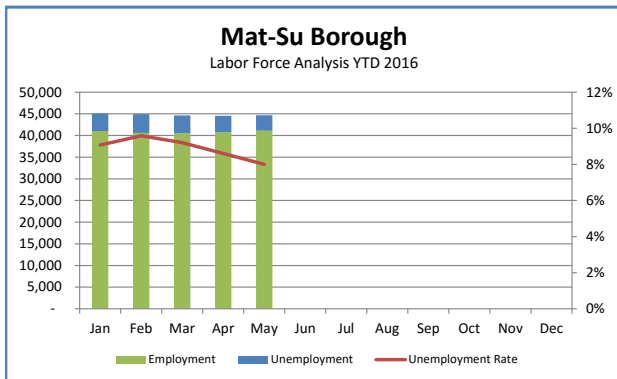
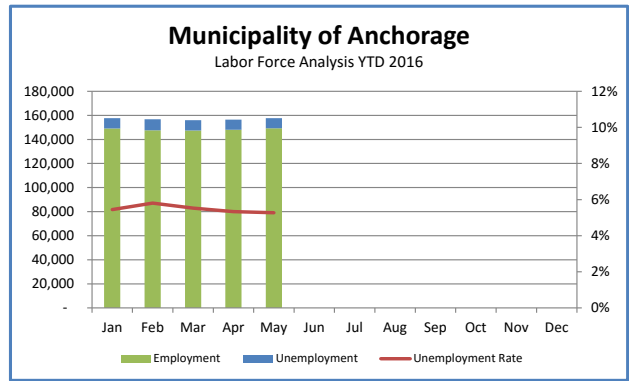
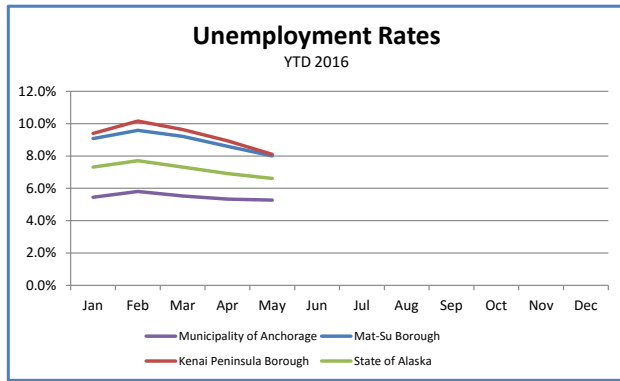
# UNEMPLOYMENT ANALYSIS (YTD, 2016)

Anchorage, Mat-Su, Kenai Peninsula Borough

	Jan	Feb	Mar	Apr	May	Jun	Jul	Aug	Sep	Oct	Nov	Dec	16 YTD Avg	15 YTD Avg	16 vs 15 (YTD)
<b>Municipality of Anchorage</b>					Preliminary										
Labor Force	Revised 157,690	Revised 156,738	Revised 156,075	Revised 156,431	157,632								156,913	160,158	(3,245)
Employment	149,099	147,638	147,451	148,090	149,321								148,320	151,886	(3,566)
Unemployment	8,591	9,100	8,624	8,341	8,311								8,593	8,272	321
Unemployment Rate	5.4%	5.8%	5.5%	5.3%	5.3%								5.5%	5.2%	0.3%
<b>Mat-Su Borough</b>															
Labor Force	45,114	44,930	44,632	44,544	44,693								44,783	44,502	281
Employment	41,020	40,623	40,522	40,712	41,115								40,798	40,715	83
Unemployment	4,094	4,307	4,110	3,832	3,578								3,984	3,787	197
Unemployment Rate	9.1%	9.6%	9.2%	8.6%	8.0%								8.9%	8.5%	0.4%
<b>Kenai Peninsula Borough</b>															
Labor Force	26,501	26,513	26,531	26,522	27,430								26,699	27,057	(358)
Employment	24,010	23,819	23,975	24,152	25,208								24,233	24,682	(449)
Unemployment	2,491	2,694	2,556	2,370	2,222								2,467	2,375	92
Unemployment Rate	9.4%	10.2%	9.6%	8.9%	8.1%								9.2%	8.8%	0.5%
<b>Southcentral Region</b>															
Labor Force	229,305	228,181	227,238	227,497	229,755								228,395	231,717	(3,322)
Employment	214,129	212,080	211,948	212,954	215,644								213,351	217,283	(3,932)
Unemployment	15,176	16,101	15,290	14,543	14,111								15,044	14,434	610
Unemployment Rate	6.6%	7.1%	6.7%	6.4%	6.1%								6.6%	6.2%	0.4%
<b>State of Alaska</b>															
Labor Force	357,087	356,996	355,942	355,983	360,509								357,303	362,290	(4,987)
Employment	330,979	329,475	329,907	331,357	336,675								331,679	336,571	(4,892)
Unemployment	26,108	27,521	26,035	24,626	23,834								25,625	25,719	(94)
Unemployment Rate	7.3%	7.7%	7.3%	6.9%	6.6%								7.2%	7.1%	0.1%

\*Note: These numbers reflect employment, unemployment, etc. for only those people that are residence of the specified City/Region, thus are not inclusive of people who commute to another city for their jobs.  
(Ex: Someone lives in Wasilla but works in Anchorage. They would be counted in the Mat-Su Borough's labor force and employment numbers, not the Municipality of Anchorage numbers)





# INDUSTRY EMPLOYMENT ESTIMATES 2016

## Municipality of Anchorage

Industry	Jan	Feb	Mar	Apr	May	Jun	Jul	Aug	Sep	Oct	Nov	Dec	2016 YTD Avg.	2015 YTD Avg.	2016 vs 2015 YTD	% Change
<b>Total Nonfarm</b>	<b>Revised</b>	<b>Revised</b>	<b>Revised</b>	<b>Revised</b>	<b>Preliminary</b>											
Goods Producing	153,900	154,700	154,300	155,600	158,500								155,400	155,900	-500	-0.3%
Services Providing	12,400	12,300	12,400	12,400	13,700								12,600	13,600	-1,000	-7.4%
Mining and Logging <sup>2</sup>	141,500	142,300	142,100	143,200	144,900								142,800	142,300	500	0.4%
Oil & Gas	3,600	3,500	3,400	3,400	3,400								3,500	3,900	-400	-10.3%
Construction	3,400	3,400	3,200	3,200	3,300								3,300	3,800	-500	-13.2%
Manufacturing	7,000	7,100	7,000	7,200	8,300								7,300	7,800	-500	-6.4%
Trade/Transportation/Utilities	1,800	1,800	1,800	1,900	2,000								1,900	1,900	0	0.0%
Wholesale Trade	33,200	33,000	32,800	33,300	34,200								33,300	33,000	300	0.9%
Retail Trade	4,700	4,700	4,700	4,800	4,900								4,800	4,800	0	0.0%
Trans/Warehouse/Utilities	17,900	17,700	17,500	17,700	18,000								17,800	17,600	200	1.1%
Information	10,600	10,600	10,600	10,800	11,200								10,800	10,600	200	1.9%
Financial Activities	4,100	4,000	4,100	4,100	4,100								4,100	4,100	0	0.0%
Professional & Business Svcs	7,300	7,300	7,300	7,400	7,400								7,300	7,400	-100	-1.4%
Educational & Health Services	19,200	19,500	19,300	19,600	20,300								19,600	20,200	-600	-3.0%
Health Care	25,300	25,900	26,100	26,100	26,000								25,900	25,200	700	2.8%
Leisure & Hospitality	19,200	19,500	19,600	19,600	20,200								19,600	19,100	500	2.6%
Accommodation	16,800	16,900	16,800	16,900	17,400								17,000	16,900	100	0.6%
Food Svcs & Drinking Places	3,200	3,200	3,300	3,300	3,300								3,300	3,300	0	0.0%
Other Services	11,400	11,400	11,300	11,500	11,800								11,500	11,400	100	0.9%
Government	6,000	6,000	6,000	5,900	6,000								6,000	6,000	0	0.0%
Federal Government	29,700	29,900	29,700	30,100	29,600								29,800	29,600	200	0.7%
State Government	8,600	8,700	8,700	8,800	8,800								8,700	8,400	300	3.6%
Local Government	10,400	10,500	10,500	10,500	10,100								10,400	10,700	-300	-2.8%
State Education	2,700	2,800	2,800	2,800	2,300								2,700	2,800	-100	-3.6%
Local Education	10,700	10,700	10,500	10,800	10,700								10,700	10,500	200	1.9%
Local Education	7,800	7,900	7,600	7,900	7,800								7,800	7,700	100	1.3%

- Nonfarm Wage & Salary excludes self-employed workers, fishers, domestics, and unpaid family workers.

- All totals are seasonally non-adjusted totals.

- Government includes employees of public school systems and the University of Alaska.

- Beginning January 2001, wage and salary employment estimates were published under a new classification system. The Standard Industrial Classification system (SIC) has been replaced by the North American Industry Classification System (NAICS). Data prior to 2001 are comparable only at the Total Nonfarm and Government levels.

<sup>1/</sup> As of January 2001, certain federally-recognized tribal entities were moved to Local Government, which created a series break for Total Government and Local Government. Please see the April 2002 Alaska Economic Trends publication for a detailed explanation.

<sup>2/</sup> This category was called "Natural Resources and Mining" in previous years. The change is in name only; the industries it includes remain the same.

- Some totals may not equal components due to rounding.

- Source: Alaska Department of Labor and Workforce Development. Research and Analysis Section

**\* Note:** The above numbers are representative of all people employed in the Municipality of Anchorage, this is inclusive of workers who claim residence outside of the Municipality of Anchorage. (Ex: someone who lives in the Mat-Su, but works in Anchorage would be included in these number)

### Quick Comparisons

16 vs 15 May	-1,100	-0.7%
16 vs 15 1st Qtr	-100	-0.1%
16 vs 15 2nd Qtr	-1,100	-0.7%
16 vs 15 3rd Qtr	#DIV/0!	#DIV/0!
16 vs 15 4th Qtr	#DIV/0!	#DIV/0!

# INDUSTRY EMPLOYMENT ESTIMATES 2016

## State of Alaska

	Jan	Feb	Mar	Apr	May	Jun	Jul	Aug	Sep	Oct	Nov	Dec	2016 YTD Avg.	2015 YTD Avg.	2016 vs 2015 YTD Change	% Change
Total Nonfarm	Revised 322,500	Revised 326,100	Revised 327,200	Revised 331,400	Preliminary 343,400								330,100	330,800	-700	-0.2%
Goods Producing	41,400	43,100	43,000	43,200	44,000								42,900	46,300	-3,400	-7.3%
Services Providing	281,100	283,000	284,200	288,200	299,400								287,200	284,500	2,700	0.9%
Mining and Logging <sup>2</sup>	15,800	15,900	15,500	15,400	15,400								15,600	17,600	-2,000	-11.4%
Mining	15,700	15,800	15,400	15,300	15,300								15,500	17,400	-1,900	-10.9%
Oil & Gas	12,900	12,900	12,500	12,400	12,200								12,600	14,600	-2,000	-13.7%
Construction	14,000	14,400	14,600	15,400	17,300								15,100	16,300	-1,200	-7.4%
Manufacturing	11,600	12,800	12,900	12,400	11,300								12,200	12,400	-200	-1.6%
Seafood Processing	8,300	9,700	9,700	9,100	7,700								8,900	8,600	300	3.5%
Trade/Transportation/Utilities	63,900	63,300	63,500	64,900	68,900								64,900	63,100	1,800	2.9%
Wholesale Trade	6,300	6,300	6,200	6,400	6,700								6,400	6,500	-100	-1.5%
Retail Trade	37,700	37,400	37,500	37,700	39,100								37,900	36,100	1,800	5.0%
Food & Beverage Stores	6,100	6,100	6,000	6,000	6,200								6,100	5,800	300	5.2%
General Merchandise Stores	10,800	10,600	10,600	10,700	10,900								10,700	10,300	400	3.9%
Trans/Warehouse/Utilities	19,900	19,600	19,800	20,800	23,100								20,600	20,500	100	0.5%
Air Transportation	5,400	5,400	5,400	5,700	6,100								5,600	5,700	-100	-1.8%
Information	6,200	6,200	6,100	6,100	6,200								6,200	6,300	-100	-1.6%
Telecommunications	4,200	4,100	4,100	4,100	4,200								4,100	4,300	-200	-4.7%
Financial Activities	12,100	12,200	12,200	12,100	12,200								12,200	11,700	500	4.3%
Professional & Business Svcs	27,600	27,900	28,300	28,200	28,500								28,100	29,600	-1,500	-5.1%
Educational & Health Services	48,000	48,500	49,100	49,100	49,400								48,800	47,100	1,700	3.6%
Health Care	35,000	35,500	35,900	35,800	36,100								35,700	34,300	1,400	4.1%
Leisure & Hospitality	30,100	30,500	30,500	32,300	37,600								32,200	32,000	200	0.6%
Accommodation	6,100	6,200	6,800	7,400	10,200								7,300	7,100	200	2.8%
Food Svcs & Drinking Places	20,100	20,200	19,600	20,400	22,000								20,500	20,600	-100	-0.5%
Other Services	11,700	11,700	11,600	11,500	11,500								11,600	11,600	0	0.0%
Government	81,500	82,700	82,900	84,000	85,100								83,200	83,000	200	0.2%
Federal Government	14,600	14,700	15,000	15,400	16,200								15,200	14,500	700	4.8%
State Government	24,900	25,200	25,400	25,600	24,800								25,200	26,400	-1,200	-4.5%
State Education	7,700	8,100	8,100	8,200	7,200								7,900	8,300	-400	-4.8%
Local Government	42,000	42,800	42,500	43,000	44,100								42,900	42,100	800	1.9%
Local Education	23,700	24,200	24,000	24,400	25,200								24,300	24,100	200	0.8%
Tribal Government <sup>1</sup>	3,600	3,600	3,600	3,700	4,100								3,700	3,600	100	2.8%

- Nonfarm Wage & Salary excludes self-employed workers, fishers, domestics, and unpaid family workers.

- All totals are non-seasonally adjusted totals.

- Government includes employees of public school systems and the University of Alaska.

- Beginning January 2001, wage and salary employment estimates were published under a new classification system (SIC) has been replaced by the North American Industry Classification System (NAICS). Data prior to 2001 are comparable only at the Total Nonfarm and Government levels.

1/ As of January 2001, certain federally-recognized tribal entities were moved to Local Government, which created a series break for Total Government and Local Government. Please see the April 2002 Alaska Economic Trends publication for a detailed explanation.

2/ This category was called "Natural Resources and Mining" in previous years. The change is in name only; the industries it includes remain the same.

- Totals may not equal sub-sections due to rounding.

- Source: Alaska Department of Labor and Workforce Development, Research and Analysis Section

Quick Comparisons			
16 vs 15	-1,800	-0.5%	
May			
16 vs 15	200	0.1%	
1st Qtr			
16 vs 15	-1,900	-0.6%	
2nd Qtr			
16 vs 15	#DIV/0!	#DIV/0!	
3rd Qtr			
16 vs 15	#DIV/0!	#DIV/0!	
4th Qtr			

## Press Release

## COMMISSIONER'S OFFICE

June 17, 2016

No. 16-23

For more information: Caroline Schultz, Economist  
907-465-6027, [Caroline.Schultz@Alaska.Gov](mailto:Caroline.Schultz@Alaska.Gov)

### Unemployment rate at 6.7 percent in May

JUNEAU, Alaska—Alaska's seasonally adjusted unemployment rate was 6.7 percent in May, a small increase from April's 6.6 percent. The comparable national rate was 4.7 percent.

The last time there was a two percentage point gap between the U.S. and Alaska rates was October of 2009, when rates peaked at the height of the great recession – Alaska's at 8.0 percent, and the U.S. at 10.0 percent. But that relationship was unusual. For more than 25 years before the great recession, Alaska's rate averaged close to 2 percentage points above the national level.

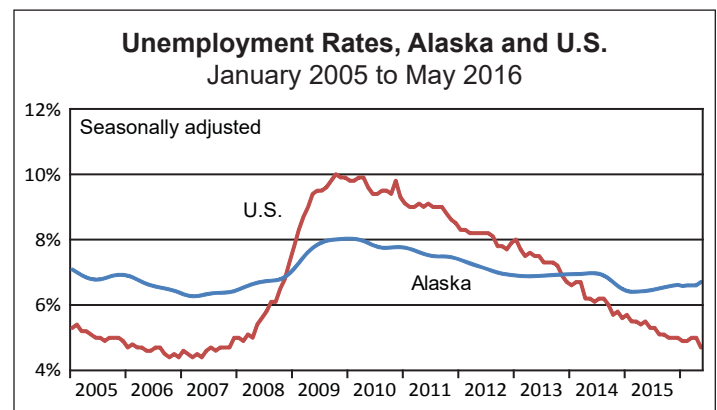
Alaska's unadjusted rate had a typical seasonal decline from 6.9 percent in April to 6.6 percent in May. Unadjusted rates fell in 22 boroughs and census areas from April to May, remained flat in three, and rose in four.

Big swings occurred in May in two areas along with the arrival of the tourism season. The unemployment rate fell 11.5 percentage points to 5.4 percent in the Denali Borough, and 7.8 percentage points to 4.7 percent in the Municipality of Skagway.

The city and boroughs of Juneau and Sitka shared the lowest rate in the state in May, at 4.2 percent. The highest rate was 22.3 percent in the Kusilvak Census Area.

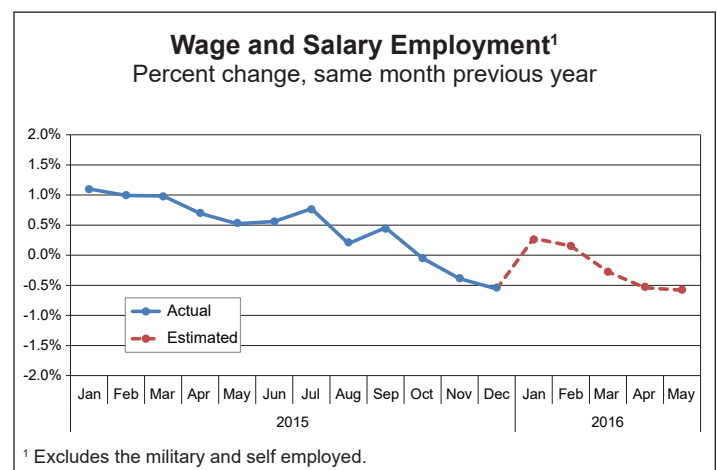
Preliminary employment estimates show 0.6 percent fewer jobs in May of 2016 compared to the same month in the previous year. Shrinking oil and gas and state government employment have been the main contributors to overall employment losses, which started late last year.

For detailed employment estimates, see <http://live.laborstats.alaska.gov/ces/>. The estimates are preliminary and subject to potentially large revisions. For more information on unemployment rates around the state, see [live.laborstats.alaska.gov/labforce/](http://live.laborstats.alaska.gov/labforce/).



#### Unemployment Rates, Seasonally Adjusted

	5/16	4/16	5/15
Alaska	6.7%	6.6%	6.4%
U.S.	4.7%	5.0%	5.5%



Sources: Alaska Department of Labor and Workforce Development, Research and Analysis Section; and U.S. Bureau of Labor Statistics

## Labor Force by Borough and Census Area, Not Seasonally Adjusted<sup>1</sup>

	Civilian Labor Force			Unemployed					
	5/16 <sup>P</sup>	4/16	5/15	Number			Rate		
				5/16 <sup>P</sup>	4/16	5/15	5/16 <sup>P</sup>	4/16	5/15
<b>Alaska</b>	<b>360,509</b>	<b>355,983</b>	<b>364,910</b>	<b>23,834</b>	<b>24,626</b>	<b>22,994</b>	<b>6.6</b>	<b>6.9</b>	<b>6.3</b>
<b>Anchorage/Mat-Su Region</b>	<b>202,325</b>	<b>200,975</b>	<b>202,913</b>	<b>11,889</b>	<b>12,173</b>	<b>11,078</b>	<b>5.9</b>	<b>6.1</b>	<b>5.5</b>
Anchorage, Municipality	157,632	156,431	158,096	8,311	8,341	7,707	5.3	5.3	4.9
Matanuska-Susitna Borough	0	44,544	44,817	3,578	3,832	3,371	8.0	8.6	7.5
<b>Gulf Coast Region</b>	<b>38,631</b>	<b>37,549</b>	<b>39,439</b>	<b>2,904</b>	<b>3,126</b>	<b>2,755</b>	<b>7.5</b>	<b>8.3</b>	<b>7.0</b>
Kenai Peninsula Borough	27,430	26,522	27,943	2,222	2,370	2,038	8.1	8.9	7.3
Kodiak Island Borough	6,260	6,507	6,437	297	305	328	4.7	4.7	5.1
Valdez-Cordova Census Area	4,941	4,520	5,059	385	451	389	7.8	10.0	7.7
<b>Interior Region</b>	<b>53,619</b>	<b>51,736</b>	<b>54,533</b>	<b>3,404</b>	<b>3,570</b>	<b>3,245</b>	<b>6.3</b>	<b>6.9</b>	<b>6.0</b>
Denali Borough	1,396	629	1,395	75	106	72	5.4	16.9	5.2
Fairbanks North Star Borough	46,574	45,642	47,445	2,594	2,703	2,415	5.6	5.9	5.1
Southeast Fairbanks Census Area	3,030	2,948	3,053	306	328	315	10.1	11.1	10.3
Yukon-Koyukuk Census Area	2,619	2,517	2,640	429	433	443	16.4	17.2	16.8
<b>Northern Region</b>	<b>10,830</b>	<b>10,828</b>	<b>11,477</b>	<b>1,285</b>	<b>1,252</b>	<b>1,256</b>	<b>11.9</b>	<b>11.6</b>	<b>10.9</b>
Nome Census Area	3,951	3,842	4,183	525	519	516	13.3	13.5	12.3
North Slope Borough	4,077	4,267	4,330	271	251	253	6.6	5.9	5.8
Northwest Arctic Borough	2,802	2,719	2,964	489	482	487	17.5	17.7	16.4
<b>Southeast Region</b>	<b>37,856</b>	<b>35,457</b>	<b>38,876</b>	<b>2,141</b>	<b>2,294</b>	<b>2,250</b>	<b>5.7</b>	<b>6.5</b>	<b>5.8</b>
Haines Borough	1,043	963	1,062	100	114	91	9.6	11.8	8.6
Hoonah-Angoon Census Area	1,160	1,032	1,220	123	153	157	10.6	14.8	12.9
Juneau, City and Borough	17,431	16,811	17,868	730	745	751	4.2	4.4	4.2
Ketchikan Gateway Borough	7,148	6,521	7,313	438	465	432	6.1	7.1	5.9
Petersburg Borough	1,383	1,330	1,423	118	121	123	8.5	9.1	8.6
Prince of Wales-Hyder Census Area	2,714	2,634	2,810	309	327	339	11.4	12.4	12.1
Sitka, City and Borough	4,684	4,243	4,807	195	200	203	4.2	4.7	4.2
Skagway, Municipality	978	634	1,012	46	79	57	4.7	12.5	5.6
Wrangell, City and Borough	1,036	1,028	1,070	66	75	76	6.4	7.3	7.1
Yakutat, City and Borough	279	261	291	16	15	21	5.7	5.7	7.2
<b>Southwest Region</b>	<b>17,247</b>	<b>19,439</b>	<b>17,672</b>	<b>2,211</b>	<b>2,210</b>	<b>2,411</b>	<b>12.8</b>	<b>11.4</b>	<b>13.6</b>
Aleutians East Borough	1,295	2,711	1,319	78	66	85	6.0	2.4	6.4
Aleutians West Census Area	3,054	4,167	3,140	162	145	204	5.3	3.5	6.5
Bethel Census Area	7,073	7,050	7,211	1,049	1,039	1,100	14.8	14.7	15.3
Bristol Bay Borough	465	282	475	30	31	32	6.5	11.0	6.7
Dillingham Census Area	1,993	1,944	2,019	204	212	202	10.2	10.9	10.0
Kusilvak Census Area	2,699	2,726	2,832	603	621	704	22.3	22.8	24.9
Lake and Peninsula Borough	668	559	676	85	96	84	12.7	17.2	12.4

P = Preliminary. As more information becomes available, data are revised every month for the previous month and again at the end of every calendar year.

Note: The official definition of unemployment excludes anyone who has not made an active attempt to find work in the four-week period up to and including the week that includes the 12th of the reference month. Many in rural Alaska do not meet the definition because they have not conducted an active job search due to the scarcity of employment opportunities.

<sup>1</sup>Unemployment rates that are not seasonally adjusted should not be compared with those that are.

Source: Alaska Department of Labor and Workforce Development, Research and Analysis Section; and U.S. Bureau of Labor Statistics



## Press Release

## COMMISSIONER'S OFFICE

June 17, 2016

No. 16-23

For more information: Caroline Schultz, Economist  
907-465-6027, [Caroline.Schultz@Alaska.Gov](mailto:Caroline.Schultz@Alaska.Gov)

### Unemployment rate at 6.7 percent in May

JUNEAU, Alaska—Alaska's seasonally adjusted unemployment rate was 6.7 percent in May, a small increase from April's 6.6 percent. The comparable national rate was 4.7 percent.

The last time there was a two percentage point gap between the U.S. and Alaska rates was October of 2009, when rates peaked at the height of the great recession – Alaska's at 8.0 percent, and the U.S. at 10.0 percent. But that relationship was unusual. For more than 25 years before the great recession, Alaska's rate averaged close to 2 percentage points above the national level.

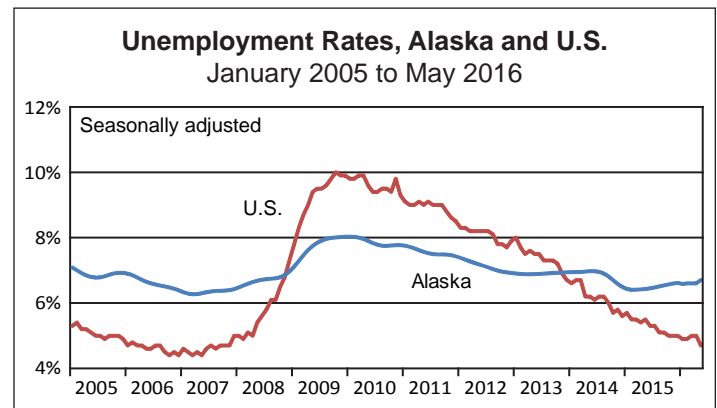
Alaska's unadjusted rate had a typical seasonal decline from 6.9 percent in April to 6.6 percent in May. Unadjusted rates fell in 22 boroughs and census areas from April to May, remained flat in three, and rose in four.

Big swings occurred in May in two areas along with the arrival of the tourism season. The unemployment rate fell 11.5 percentage points to 5.4 percent in the Denali Borough, and 7.8 percentage points to 4.7 percent in the Municipality of Skagway.

The city and boroughs of Juneau and Sitka shared the lowest rate in the state in May, at 4.2 percent. The highest rate was 22.3 percent in the Kusilvak Census Area.

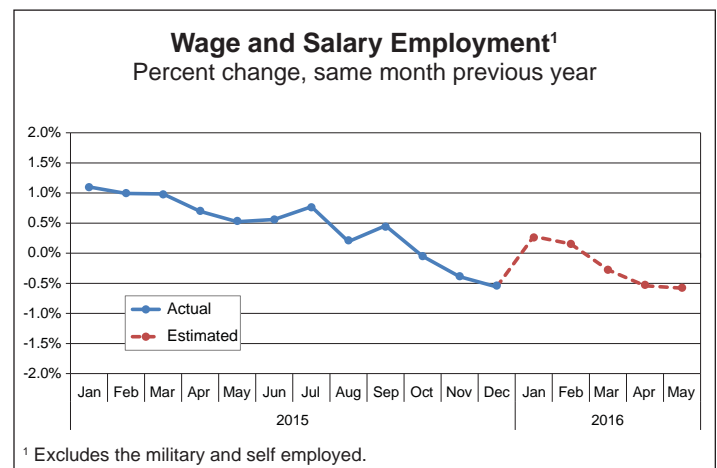
Preliminary employment estimates show 0.6 percent fewer jobs in May of 2016 compared to the same month in the previous year. Shrinking oil and gas and state government employment have been the main contributors to overall employment losses, which started late last year.

For detailed employment estimates, see <http://live.laborstats.alaska.gov/ces/>. The estimates are preliminary and subject to potentially large revisions. For more information on unemployment rates around the state, see [live.laborstats.alaska.gov/labforce/](http://live.laborstats.alaska.gov/labforce/).



#### Unemployment Rates, Seasonally Adjusted

	5/16	4/16	5/15
Alaska	6.7%	6.6%	6.4%
U.S.	4.7%	5.0%	5.5%



Sources: Alaska Department of Labor and Workforce Development, Research and Analysis Section; and U.S. Bureau of Labor Statistics

## Labor Force by Borough and Census Area, Not Seasonally Adjusted<sup>1</sup>

	Civilian Labor Force			Unemployed					
	5/16 <sup>P</sup>	4/16	5/15	Number			Rate		
	5/16 <sup>P</sup>	4/16	5/15	5/16 <sup>P</sup>	4/16	5/15	5/16 <sup>P</sup>	4/16	5/15
<b>Alaska</b>	<b>360,509</b>	<b>355,983</b>	<b>364,910</b>	<b>23,834</b>	<b>24,626</b>	<b>22,994</b>	<b>6.6</b>	<b>6.9</b>	<b>6.3</b>
<b>Anchorage/Mat-Su Region</b>	<b>202,325</b>	<b>200,975</b>	<b>202,913</b>	<b>11,889</b>	<b>12,173</b>	<b>11,078</b>	<b>5.9</b>	<b>6.1</b>	<b>5.5</b>
Anchorage, Municipality	157,632	156,431	158,096	8,311	8,341	7,707	5.3	5.3	4.9
Matanuska-Susitna Borough	0	44,544	44,817	3,578	3,832	3,371	8.0	8.6	7.5
<b>Gulf Coast Region</b>	<b>38,631</b>	<b>37,549</b>	<b>39,439</b>	<b>2,904</b>	<b>3,126</b>	<b>2,755</b>	<b>7.5</b>	<b>8.3</b>	<b>7.0</b>
Kenai Peninsula Borough	27,430	26,522	27,943	2,222	2,370	2,038	8.1	8.9	7.3
Kodiak Island Borough	6,260	6,507	6,437	297	305	328	4.7	4.7	5.1
Valdez-Cordova Census Area	4,941	4,520	5,059	385	451	389	7.8	10.0	7.7
<b>Interior Region</b>	<b>53,619</b>	<b>51,736</b>	<b>54,533</b>	<b>3,404</b>	<b>3,570</b>	<b>3,245</b>	<b>6.3</b>	<b>6.9</b>	<b>6.0</b>
Denali Borough	1,396	629	1,395	75	106	72	5.4	16.9	5.2
Fairbanks North Star Borough	46,574	45,642	47,445	2,594	2,703	2,415	5.6	5.9	5.1
Southeast Fairbanks Census Area	3,030	2,948	3,053	306	328	315	10.1	11.1	10.3
Yukon-Koyukuk Census Area	2,619	2,517	2,640	429	433	443	16.4	17.2	16.8
<b>Northern Region</b>	<b>10,830</b>	<b>10,828</b>	<b>11,477</b>	<b>1,285</b>	<b>1,252</b>	<b>1,256</b>	<b>11.9</b>	<b>11.6</b>	<b>10.9</b>
Nome Census Area	3,951	3,842	4,183	525	519	516	13.3	13.5	12.3
North Slope Borough	4,077	4,267	4,330	271	251	253	6.6	5.9	5.8
Northwest Arctic Borough	2,802	2,719	2,964	489	482	487	17.5	17.7	16.4
<b>Southeast Region</b>	<b>37,856</b>	<b>35,457</b>	<b>38,876</b>	<b>2,141</b>	<b>2,294</b>	<b>2,250</b>	<b>5.7</b>	<b>6.5</b>	<b>5.8</b>
Haines Borough	1,043	963	1,062	100	114	91	9.6	11.8	8.6
Hoonah-Angoon Census Area	1,160	1,032	1,220	123	153	157	10.6	14.8	12.9
Juneau, City and Borough	17,431	16,811	17,868	730	745	751	4.2	4.4	4.2
Ketchikan Gateway Borough	7,148	6,521	7,313	438	465	432	6.1	7.1	5.9
Petersburg Borough	1,383	1,330	1,423	118	121	123	8.5	9.1	8.6
Prince of Wales-Hyder Census Area	2,714	2,634	2,810	309	327	339	11.4	12.4	12.1
Sitka, City and Borough	4,684	4,243	4,807	195	200	203	4.2	4.7	4.2
Skagway, Municipality	978	634	1,012	46	79	57	4.7	12.5	5.6
Wrangell, City and Borough	1,036	1,028	1,070	66	75	76	6.4	7.3	7.1
Yakutat, City and Borough	279	261	291	16	15	21	5.7	5.7	7.2
<b>Southwest Region</b>	<b>17,247</b>	<b>19,439</b>	<b>17,672</b>	<b>2,211</b>	<b>2,210</b>	<b>2,411</b>	<b>12.8</b>	<b>11.4</b>	<b>13.6</b>
Aleutians East Borough	1,295	2,711	1,319	78	66	85	6.0	2.4	6.4
Aleutians West Census Area	3,054	4,167	3,140	162	145	204	5.3	3.5	6.5
Bethel Census Area	7,073	7,050	7,211	1,049	1,039	1,100	14.8	14.7	15.3
Bristol Bay Borough	465	282	475	30	31	32	6.5	11.0	6.7
Dillingham Census Area	1,993	1,944	2,019	204	212	202	10.2	10.9	10.0
Kusilvak Census Area	2,699	2,726	2,832	603	621	704	22.3	22.8	24.9
Lake and Peninsula Borough	668	559	676	85	96	84	12.7	17.2	12.4

P = Preliminary. As more information becomes available, data are revised every month for the previous month and again at the end of every calendar year.

Note: The official definition of unemployment excludes anyone who has not made an active attempt to find work in the four-week period up to and including the week that includes the 12th of the reference month. Many in rural Alaska do not meet the definition because they have not conducted an active job search due to the scarcity of employment opportunities.

<sup>1</sup>Unemployment rates that are not seasonally adjusted should not be compared with those that are.

Source: Alaska Department of Labor and Workforce Development, Research and Analysis Section; and U.S. Bureau of Labor Statistics



AEDC  
**Anchorage Economic**  
Development Corporation