



# Anchorage Employment Report

CO-SPONSORED BY:



## TABLE OF CONTENTS

EXECUTIVE SUMMARY .....	2
GOODS PRODUCING JOBS SUMMARY .....	3
SERVICES PROVIDING JOBS SUMMARY .....	4
HEALTH CARE SNAPSHOT .....	4
PROFESSIONAL & BUSINESS SERVICES SNAPSHOT .....	5
ANCHORAGE HOUSING .....	5
ALASKA FORECLOSURES & BANKRUPTCIES.....	7
UNEMPLOYMENT CLAIMS .....	8
UNEMPLOYMENT ANALYSIS OF SOUTHCENTRAL REGION (TABLE).....	9
LABOR FORCE ANALYSIS CHARTS.....	10
ANCHORAGE EMPLOYMENT ESTIMATES TABLE.....	11
ALASKA EMPLOYMENT ESTIMATES TABLE .....	11
ALASKA DEPARTMENT OF LABOR PRESS RELEASE.....	12

All data referenced in this employment report is from the State of Alaska, Dept. of Labor & Workforce Development website: [www.laborstats.alaska.gov](http://www.laborstats.alaska.gov) and from the U.S. Bureau of Labor Statistics: [www.bls.gov](http://www.bls.gov).

**Report compiled by Anchorage Economic Development Corp. Research Department.**

**Report generously sponsored by First National Bank Alaska and Alaska Communications.**

If you are interested in learning more about this data or are interested in how AEDC can help you develop a report, call AEDC at 907.258.3700.

## EXECUTIVE SUMMARY

### MONTHLY UNEMPLOYMENT

The not seasonally adjusted unemployment rate for Anchorage in March was 5.8 percent, down 0.1 percent from the February revised rate. **This is above the national not seasonally adjusted rate of 4.5 percent and below the statewide not seasonally adjusted rate of 7.2 percent.** The March unemployment rate for Anchorage was 0.3 percent higher than it was in March 2016. *As always, it should be noted that these are preliminary survey figures for July and will be revised next month.*

# 5.8%

March 2017  
Unemployment Rate  
for Anchorage (preliminary)

### YEAR-TO-DATE UNEMPLOYMENT

The 2017 average year-to-date (YTD) not seasonally adjusted unemployment rate in Anchorage was 5.7 percent at the end of March, 0.1 percent higher than at this time last year. **A decrease of 561 in the employment total and 44 in the Anchorage labor force during the YTD period have resulted in the reported unemployment total increasing by 190.** The total number of unemployed people in Anchorage for March 2017 is estimated at 9,161 (those actively looking for jobs), 537 more than March 2016. In the Mat-Su Borough, the YTD average monthly unemployment rate of 9.2 percent is down 0.1 percent from 2016 YTD while the Kenai Peninsula's unemployment rate of 9.2 has decreased by 0.6 percent during the same period (see the charts on pages 9-10 for more details).

# 5.7%

2017 YTD  
Unemployment Rate  
for Anchorage (preliminary)

*It is important to note that the Anchorage unemployment numbers represent the labor force residing in Anchorage, and do not describe the number of filled positions in Anchorage. The industry employment estimates referenced in the remainder of this report are representative of the number of jobs in the Municipality of Anchorage, regardless of the job holder's place of residency.*

### ANCHORAGE INDUSTRY EMPLOYMENT ESTIMATES

As for Anchorage industry employment estimates, which include total jobs in Anchorage held by city residents and commuters, the YTD average for 2017 shows a loss of 2,300 jobs (-1.5%) so far compared to the same period in 2016. The private sector (total jobs minus government jobs) at 120,700 jobs shrunk by 2,000 (-1.6%) jobs during this time, while Government employment at 29,500 jobs has decreased by 300 (-1.0%). Federal jobs have decreased by 200 (-2.3%) so far. State government jobs have decreased by 400 (-3.8%) and Local Government jobs have increased by 300 (+2.8%). Please note that these figures will likely be revised as more data is received and additional analysis is conducted.

# 150,200

Total jobs in Anchorage  
March 2017 (preliminary)

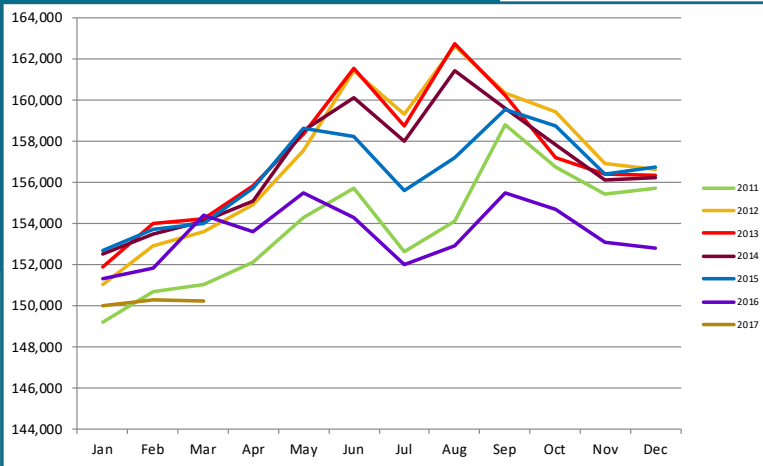
The Goods Producing category lost 1,400 jobs YTD (-12.0%). The Mining & Logging industry (which includes Oil & Gas employment) saw declines locally and is showing 800 fewer jobs (-23.5%). Construction is down 500 jobs YTD (-7.8%),

while Manufacturing remains steady compared to YTD 2016.

Services Providing industries as a sector saw slight gains in jobs during the first three months of 2017. Categories showing increases include Health Care up 300 jobs (+1.5%), and Leisure & Hospitality (Tourism) up 200 jobs (+1.2%). Services Providing industries showing losses so far in 2017 include Trade/Transportation/Utilities (TTU) down 300 jobs (-0.9%), Financial Activities down 400 jobs (-5.2%), Professional & Business Services down 300 jobs (-1.6%), and Other Services down 300 jobs (-5.0%).



**ANCHORAGE EMPLOYMENT**  
Municipality of Anchorage 2011-Present



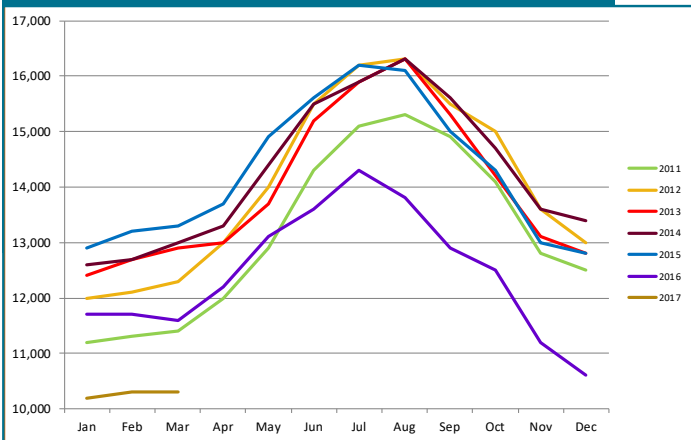
**GOODS PRODUCING JOBS**  
CONSTRUCTION WORK, MINING, OIL & GAS PRODUCTION, MANUFACTURING

Losses in the number of Goods Producing jobs in Anchorage continue to lead the overall downward trend that began in early 2016. The year-to-date average of 10,300 is 1,400 (-12.0%) fewer jobs than the same period in 2016. A decrease of 800 (-23.5%) jobs in the Mining & Logging industry, which includes Oil & Gas employment. YTD Construction employment is down 500 (-7.8%) jobs. Manufacturing is flat at 1,800 jobs. Total Anchorage Goods Producing employment continue to track at record lows for the last decade.

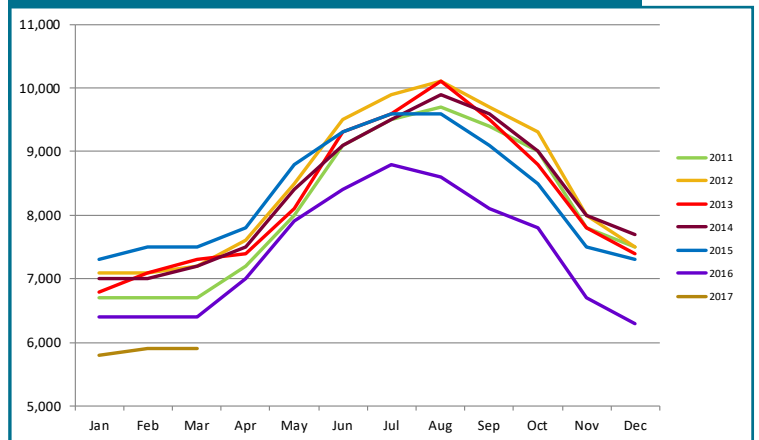
The Oil & Gas sector YTD job total shows 700 (-21.9%) fewer jobs so far this year compared to 2016 YTD. Statewide, Oil & Gas industry YTD employment is down 2,700 jobs (-21.1%) compared to the same period in 2016. While oil markets have fallen into somewhat stable market conditions, prices in the high \$40's to low \$50's seem to be generating some movement back towards renewed investments in Alaska's oil patch, though at extremely modest levels so far. In the new normal that is now in place, even slight increases in investment are important. State fiscal policy issues such as oil taxation and credits will need to be finalized before there can be an expectation of any significant renewal of investments by the private sector in Alaska's oil patch.

The Construction industry, as noted earlier, is showing 500 YTD job losses compared to the same period in 2016. Anchorage building permit application values, a measure of interest in construction, have reached \$146.6 million through the April 19 reporting period, 24 percent above the \$117.9 million at this point last year. The recent announcements of the \$31 million Odom Corporation warehouse, \$5.0 million Alaska Senior Housing 56 project as well as the \$2.0 million Northern Skies project are all contributing to a more positive building season in 2017 for Anchorage.

**GOODS PRODUCING JOBS**  
Municipality of Anchorage 2011-Present



**CONSTRUCTION EMPLOYMENT**  
Municipality of Anchorage 2011-Present



*Those jobs that are specifically tied to production, not those which support the production or maintenance of the production jobs.*

*In Anchorage:*

**10,300**

**GOODS PRODUCING JOBS**

March 2017 (preliminary)



**5,900**

**CONSTRUCTION JOBS**

March 2017 (preliminary)



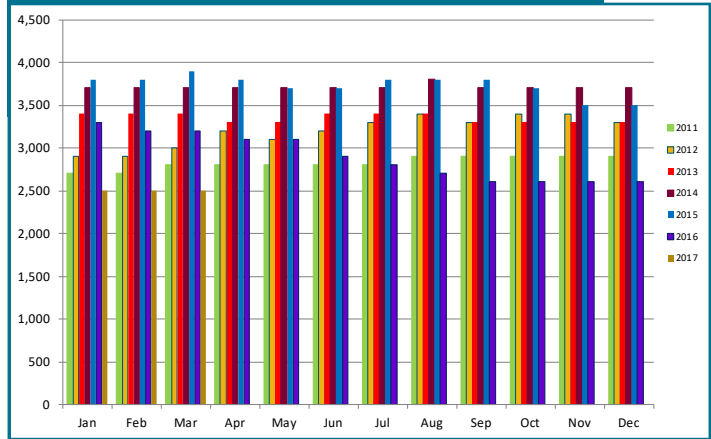
**2,500**

**OIL & GAS JOBS**

March 2017 (preliminary)

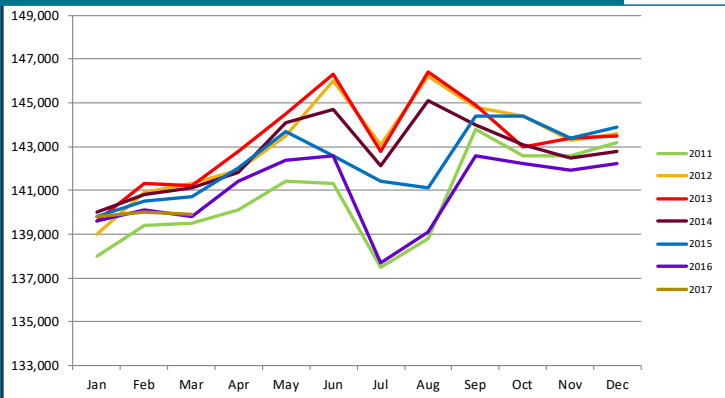
**OIL & GAS EMPLOYMENT**

Municipality of Anchorage 2011-Present



**SERVICES PROVIDING JOBS**

Municipality of Anchorage 2011-Present



**SERVICES PROVIDING JOBS**

**ENGINEERING, RETAIL, TOURISM, HEALTH CARE, ETC.**

**Services Providing jobs in Anchorage totaled 139,900 for March.**

Services Providing sector YTD average is slightly up, with 100 (0.1%) additional jobs compared to YTD 2016.

The Trade/Transportation/Utilities (TTU) industry sector is down 300 jobs (-0.9%) so far this year. The YTD employment average in Wholesale Trade and Transportation/Utilities is also up with 100 (1.0%) jobs added so far this year. The Retail Trade sector, a subset of the TTU industry, is now down by 500 jobs (-2.9%) YTD compared to 2016 YTD.

The Government jobs monthly average in Anchorage is down 300 jobs YTD from 2016. Federal Government positions are down 200 (-2.3%). The State Government sector is averaging 400 (-3.8%) fewer jobs than at this point last year. Total State government employment is down 1,000 (-4.0%) YTD. Local Government positions in Anchorage have increased by 300. State Education jobs, a subset of State Government, are down 200 jobs YTD.

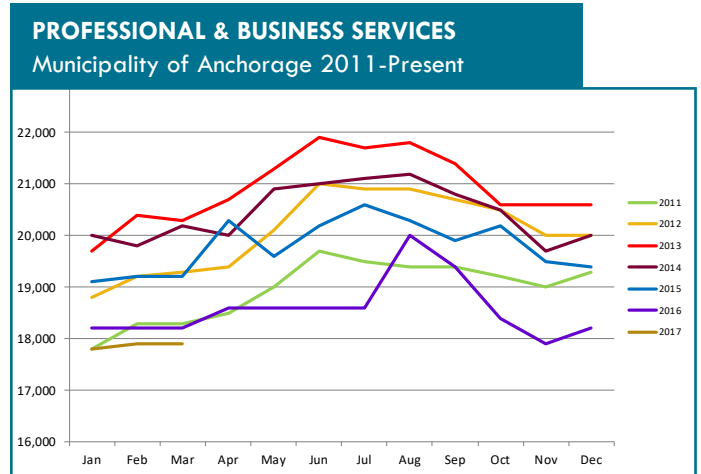
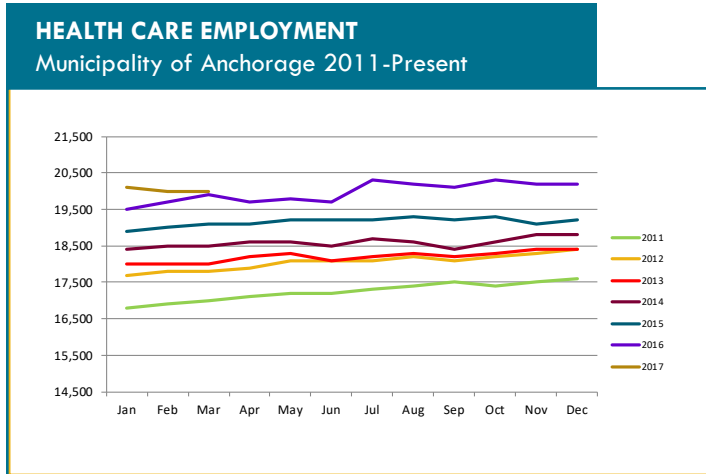
**HEALTH CARE EMPLOYMENT**

Employment in the Health Care sector now appears to be moderating, with 300 (+1.5%) more jobs over 2016 YTD. This sector began a significant run up in job growth in mid-2016 and that trend appears to be slowing in 2017. As noted in AEDC's 2016 Economic Forecast report, this sector will be one of the positive aspects regarding job growth in 2017.

## PROFESSIONAL & BUSINESS SERVICES

CONSULTING, ENGINEERING, ARCHITECTURE, LEGAL SERVICES, ACCOUNTING, SCIENTIFIC RESEARCH, WASTE MANAGEMENT & ADMINISTRATIVE SERVICES.

Professional and business services losses seem to be moderating with YTD losses of 300 jobs (-1.6%) compared to 2016. Nonexistent state capital budgets, continuing lack of major capital investments by most oil field companies give clear insight to the cause of this industry's decreases. Tougher times in this industry will continue through 2017, though job losses appear to be moderating.



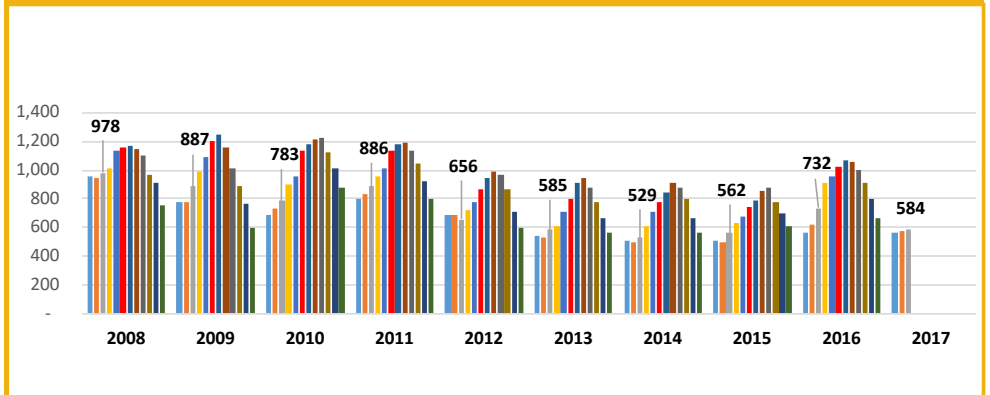
## ANCHORAGE HOUSING

### SINGLE FAMILY HOME LISTINGS

March data from Anchorage Multiple Listing Service shows that inventories of homes for sale, at 584 in Anchorage, were down substantially by 148 active listings (-20.2%) compared to March of last year, the second lowest inventory level for this month in the last 10 years. The Anchorage housing market remains a relatively balanced market of buying and selling opportunities for home sellers and home buyers.

### ANCHORAGE SINGLE FAMILY HOME LISTINGS

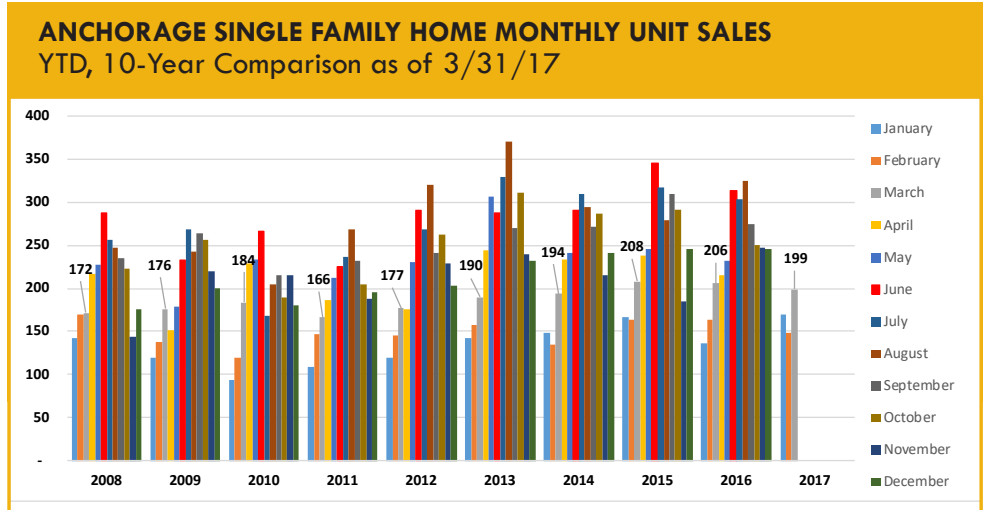
YTD Total, 10-Year Comparison



Source: Anchorage MLS

## SINGLE FAMILY HOME MONTHLY UNIT SALES

Anchorage monthly sales of single family homes in March were the fourth-best for the month in the last 10 years. One hundred forty eight units were sold, a 10.8 percent decrease compared to February 2016.



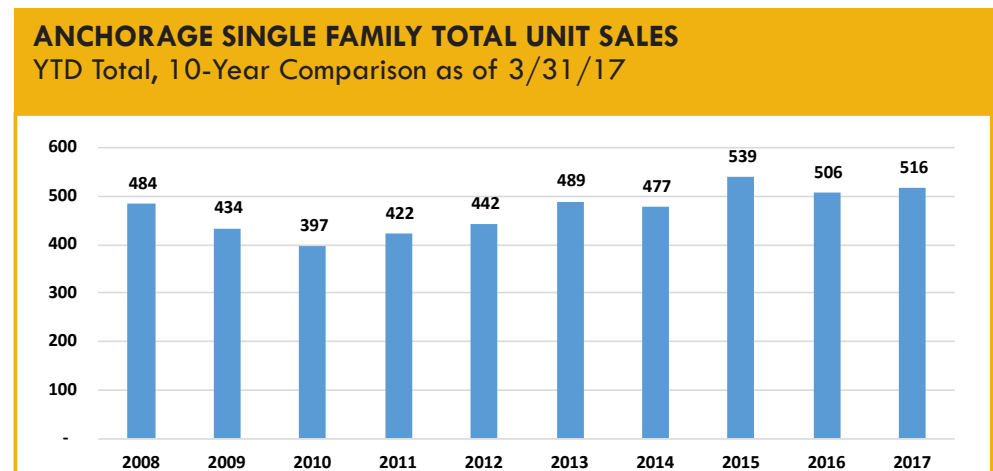
Source: Anchorage MLS



**148**  
Single family home unit sales, March 2017

## SINGLE FAMILY HOME YTD TOTAL UNIT SALES

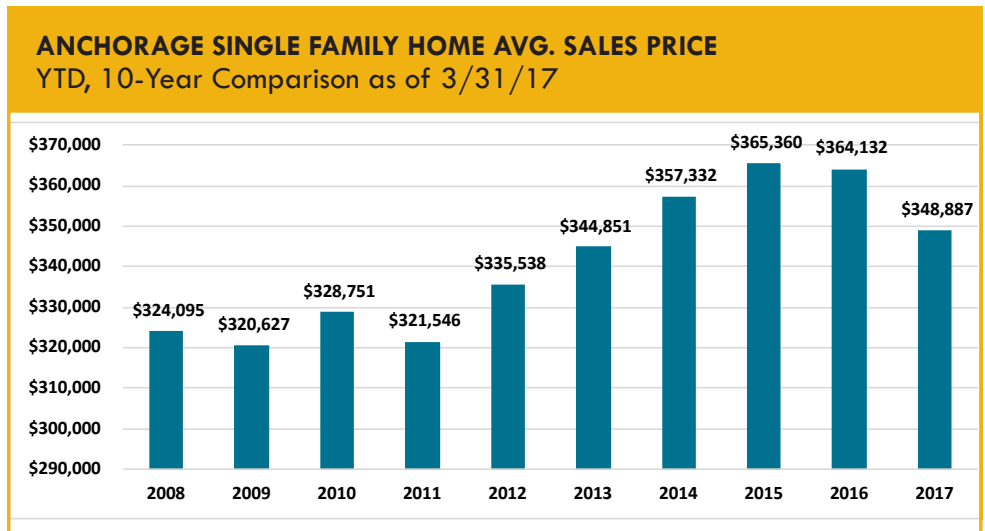
YTD sales for the first quarter of 2017 are slightly ahead of the same period in 2016 with 516 units sold so far in 2017, up 2 percent over the same period in 2016. It should be noted that March sales, at 199 units sold, was the third best total for that month in the last 10 years.



Source: Anchorage MLS

## SINGLE FAMILY HOME AVERAGE SALES PRICE

The average price for a home sold in Anchorage YTD through the end of March stood at \$348,887, down \$2,300 compared to the same period in 2016. While average sales prices can vary widely from month to month, the annual average is another good measure of market health. While down slightly by 0.7 percent, this price still remains near the top end of the 10- year average for this two month period.



Source: Anchorage MLS

**\$348,887**  
Average home sale price in Anchorage, 2017 YTD

## ALASKA FORECLOSURES

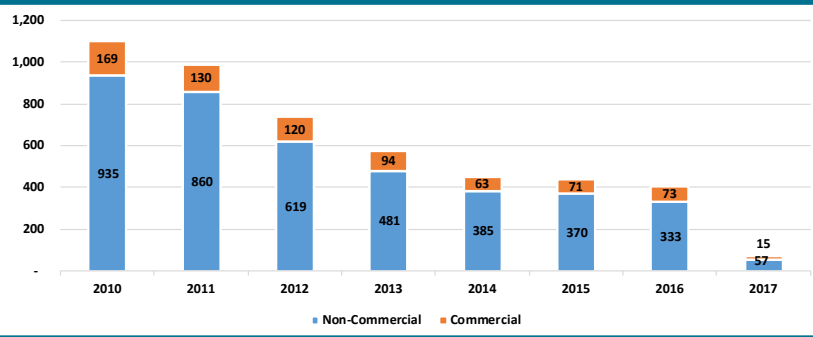
Alaska continues to show solid indicators in this category. Out of the 50 states and District of Columbia, Alaska is in a seven-way tie for last place at 0.3 percent of all active mortgages in foreclosure for the 12 months ending Jan. 31, 2017. The national average was 0.8 percent. Another positive indicator is Anchorage's serious delinquency rate, at 1.2 percent of all mortgages statewide, which ranks near the lowest in the nation — well below the national average of 2.5 percent. Current foreclosure and serious delinquency data shows that Alaska and Anchorage's housing markets remain solidly healthy as of this report.

Source: CoreLogic



## ANNUAL BANKRUPTCY FILINGS

As of 3/31/17



## ALASKA BANKRUPTCIES

According to recently released data from the American Bankruptcy Institute, Alaska bankruptcies in the first quarter remain relatively low, but did show an uptick in the number of bankruptcies filed. For the three months ending Feb. 28, Alaska ranked 51st out of the 50 states and District of Columbia with a per capita rate of 0.68 bankruptcies per 1,000 Alaskans. This compares to the national per capita rate of 2.51 bankruptcies per 1,000 Americans. The total number of bankruptcies in Alaska YTD, at 118, are up by 40 (+51.3%) compared to the same timeframe in 2016. There were 97 non-

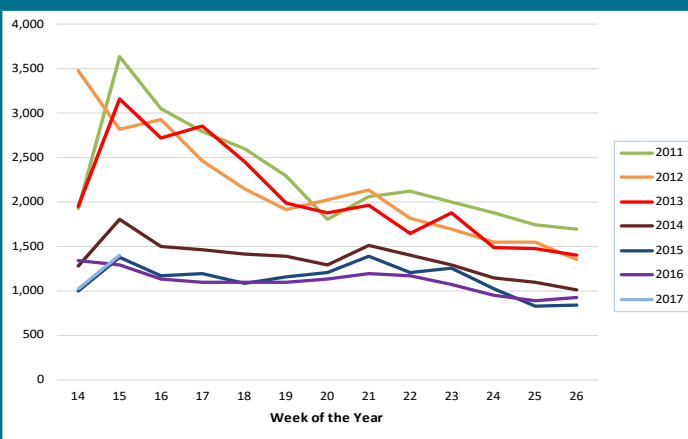
Source: American Bankruptcy Institute

commercial and 21 commercial bankruptcy filings so far in 2017, levels last seen in 2014. As measured by this metric the financial health of Alaska's citizens and businesses continues to demonstrate solid results.

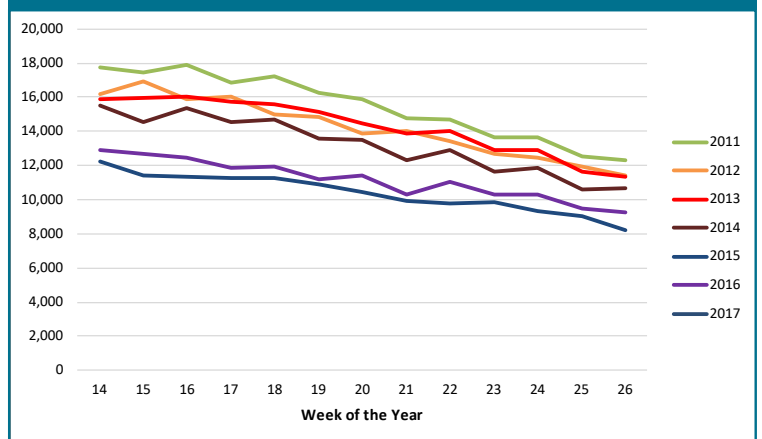
## UNEMPLOYMENT CLAIMS

Initial unemployment claim applications can be interpreted as a proxy for layoffs. They tend to fall as job growth accelerates. As was the case in 2016, weekly totals in 2017 continue to track below pre-recession levels seen in 2014, still well below recent historic highs seen in 2011. This continuing low range for initial unemployment claims has been a silver lining in the continuing bad news for the Alaska and Anchorage economies. We continue to watch this trend closely. It remains to be seen as to whether the full ripple effect of recent goods producing industry layoffs have been fully realized in the Services sector.

### INITIAL UNEMPLOYMENT CLAIMS IN ALASKA, Q2



### CONTINUING UNEMPLOYMENT CLAIMS IN ALASKA, Q2



Continuing Unemployment claims figures help to show how well unemployed workers are re-entering the workforce. This total does not include workers receiving extended benefits from the federal government. So far the trend in weekly numbers in 2017 are tracking slightly below 2015 for the same time period and remain well below recent historic highs reported in 2011. We continue to expect to see a slowing of this momentum at some point this year. If there is an unexpected increase in the rate of job losses in 2017, lack job availability will likely increasingly affect the ability to find jobs for those workers included in this metric. However, AEDC is cautiously optimistic that job losses will moderate as the year progresses, which should have a positive impact on the overall job picture for Anchorage in 2017.

## UNEMPLOYMENT ANALYSIS (YTD, 2017)

### Anchorage, Mat-Su, Kenai Peninsula Borough

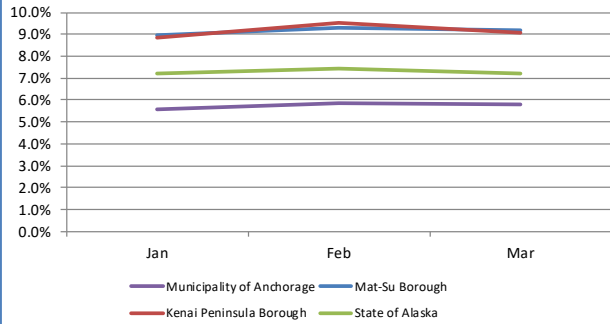
	Jan	Feb	Mar	Apr	May	Jun	Jul	Aug	Sep	Oct	Nov	Dec	17 YTD Avg	16 YTD Avg	17 vs 16 (YTD)	
<b>Municipality of Anchorage</b>																
Labor Force	Revised 156,099	Revised 157,462	Preliminary 157,950											157,170	157,214	(44)
Employment	147,369	148,247	148,789											147,808	148,369	(561)
Unemployment	8,730	9,215	9,161											9,035	8,846	190
Unemployment Rate	5.6%	5.9%	5.8%											5.7%	5.6%	0.1%
<b>Mat-Su Borough</b>																
Labor Force	46,387	46,883	46,937											46,736	45,022	1,714
Employment	42,223	42,530	42,621											42,377	40,822	1,555
Unemployment	4,164	4,353	4,316											4,278	4,201	77
Unemployment Rate	9.0%	9.3%	9.2%											9.2%	9.3%	-0.2%
<b>Kenai Peninsula Borough</b>																
Labor Force	26,481	26,487	26,634											26,534	26,507	27
Employment	24,134	23,965	24,211											24,050	23,915	135
Unemployment	2,347	2,522	2,423											2,431	2,593	(162)
Unemployment Rate	8.9%	9.5%	9.1%											9.2%	9.8%	-0.6%
<b>Southcentral Region</b>																
Labor Force	228,967	230,832	231,521											230,440	228,743	1,697
Employment	213,726	214,742	215,621											214,234	213,105	1,130
Unemployment	15,241	16,090	15,900											15,744	15,639	105
Unemployment Rate	6.7%	7.0%	6.9%											6.8%	6.8%	0.0%
<b>State of Alaska</b>																
Labor Force	356,084	360,469	362,198											359,584	357,042	2,542
Employment	330,459	333,699	336,029											332,079	330,227	1,852
Unemployment	25,625	26,770	26,169											26,188	26,815	(627)
Unemployment Rate	7.2%	7.4%	7.2%											7.3%	7.5%	-0.2%

**\*Note:** These numbers reflect employment, unemployment, etc. for only those people that are residence of the specified City/Region, thus are not inclusive of people who commute to another city for their jobs.

(Ex: Someone lives in Wasilla but works in Anchorage. They would be counted in the Mat-Su Borough's labor force and employment numbers. not the Municipality of Anchorage numbers)

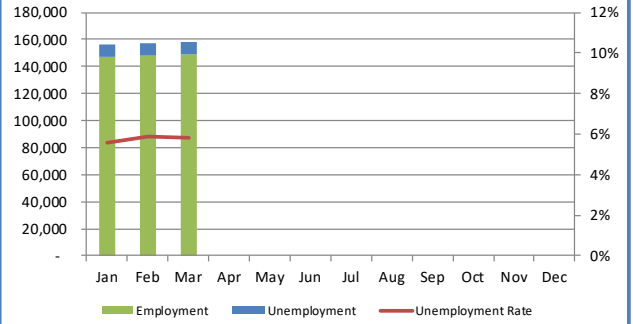
### Unemployment Rates

YTD 2017



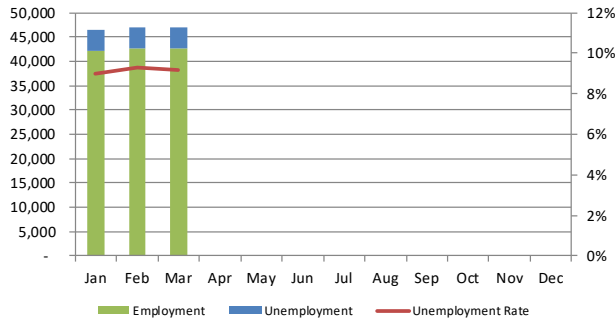
### Municipality of Anchorage

Labor Force Analysis YTD 2017



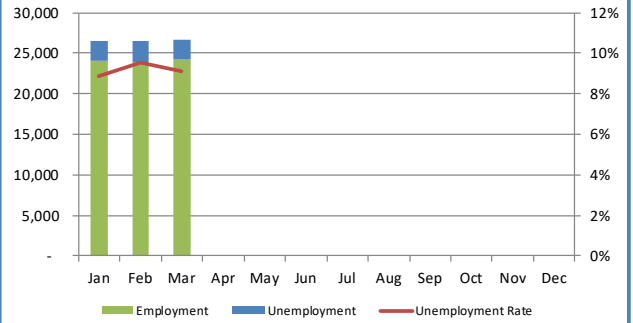
### Mat-Su Borough

Labor Force Analysis YTD 2017



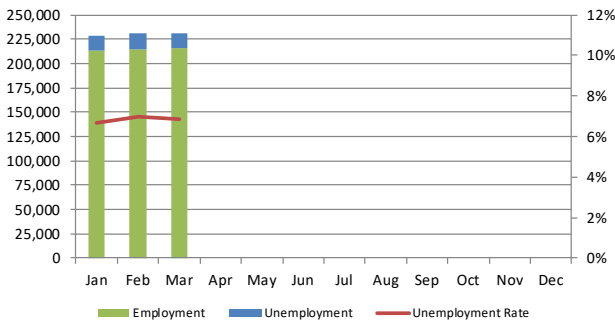
### Kenai Peninsula Borough

Labor Force Analysis YTD 2017



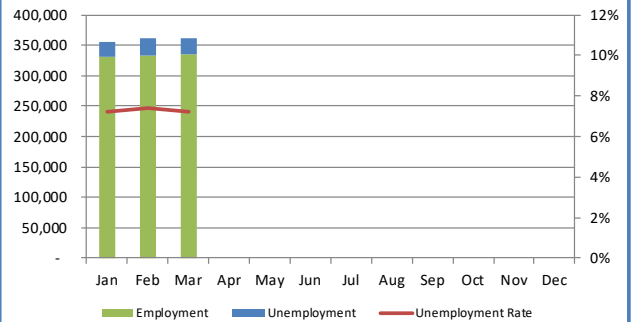
### Southcentral Region

Labor Force Analysis YTD 2017



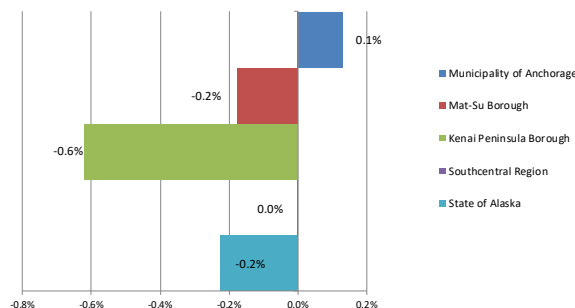
### State of Alaska

Labor Force Analysis YTD 2017



### Unemployment Rates

YTD 2017 vs YTD 2016 Monthly Average



# INDUSTRY EMPLOYMENT ESTIMATES 2017

## Municipality of Anchorage

Federal Data Series	CES	CES	CES	CES	CES	CES	CES	CES	CES	CES	CES	CES	2017 YTD Avg.	2016 YTD Avg.	2017 vs 2016 YTD Change	% Change
	Jan	Feb	Mar	Apr	May	Jun	Jul	Aug	Sep	Oct	Nov	Dec				
% Change from same month year ago	-0.9%	-1.0%	-2.7%	-100.0%	-100.0%	-100.0%	-100.0%	-100.0%	-100.0%	-100.0%	-100.0%	-100.0%				
<b>Total Nonfarm</b>	150,000	150,300	150,200										150,200	152,500	-2,300	-1.5%
<b>Goods Producing</b>	10,200	10,300	10,300										10,300	11,700	-1,400	-12.0%
Mining and Logging <sup>2</sup>	2,600	2,600	2,600										2,600	3,400	-800	-23.5%
Oil & Gas	2,500	2,500	2,500										2,500	3,200	-700	-21.9%
Construction	5,800	5,900	5,900										5,900	6,400	-500	-7.8%
Manufacturing	1,800	1,800	1,800										1,800	1,800	0	0.0%
<b>Services Providing</b>	139,800	140,000	139,900										139,900	139,800	100	0.1%
Trade/Transportation/Utilities	32,200	32,000	32,000										32,100	32,400	-300	-0.9%
Wholesale Trade	4,700	4,700	4,700										4,700	4,700	0	0.0%
Retail Trade	17,300	16,800	16,800										17,000	17,500	-500	-2.9%
Trans/Warehouse/Utilities	10,300	10,500	10,500										10,400	10,300	100	1.0%
Information	4,000	3,900	3,900										3,900	4,000	-100	-2.5%
Financial Activities	7,300	7,300	7,300										7,300	7,700	-400	-5.2%
Professional & Business Svcs	17,800	17,900	17,900										17,900	18,200	-300	-1.6%
Educational & Health Services	26,500	26,500	26,500										26,500	25,200	1,300	5.2%
Health Care	20,100	20,000	20,000										20,000	19,700	300	1.5%
Leisure & Hospitality	17,000	17,000	17,000										17,000	16,800	200	1.2%
Accommodation	3,100	3,100	3,100										3,100	3,200	-100	-3.1%
Food Svcs & Drinking Places	11,600	11,400	11,400										11,500	11,400	100	0.9%
Other Services	5,600	5,700	5,700										5,700	6,000	-300	-5.0%
<b>Government</b>	29,400	29,600	29,600										29,500	29,800	-300	-1.0%
Federal Government	8,500	8,500	8,500										8,500	8,700	-200	-2.3%
State Government	10,000	10,100	10,100										10,100	10,500	-400	-3.8%
State Education	2,500	2,700	2,700										2,600	2,800	-200	-7.1%
Local Government	10,900	10,900	10,900										10,900	10,600	300	2.8%
Local Education	8,000	8,000	8,000										8,000	7,800	200	2.6%

The Current Employment Statistics (CES) survey, is based on a survey of approximately 146,000 businesses and government agencies representing approximately

The Quarterly Census of Employment and Wages (QCEW) program publishes a quarterly count of employment and wages reported by employers covering 98 percent of U.S. jobs,

- Nonfarm Wage & Salary excludes self-employed workers, fishers, domestics, and unpaid family workers.

- All totals are seasonally non-adjusted totals.

- Government includes employees of public school systems and the University of Alaska.

- Source: Alaska Department of Labor and Workforce Development, Research and Analysis Section

\* Note: The above numbers are representative of all people employed in the Municipality of Anchorage, this is inclusive of workers who claim residence outside of the Municipality of Anchorage. (Ex: someone who lives in the Mat-Su, but works in Anchorage would be included in this number)

Quick Comparisons		
17 vs 16 March	-4,200	-2.7%
17 vs 16 1st Qtr	-2,300	-1.5%
17 vs 16 2nd Qtr		
17 vs 16 3rd Qtr		
17 vs 16 4th Qtr		

# INDUSTRY EMPLOYMENT ESTIMATES 2017

## State of Alaska

Federal Data Series	CES	CES	CES	CES	CES	CES	CES	CES	CES	CES	CES	CES	2017 YTD Avg.	2016 YTD Avg.	2017 vs 2016 YTD Change	% Change
	Jan	Feb	Mar	Apr	May	Jun	Jul	Aug	Sep	Oct	Nov	Dec				
% Change from same month year ago	-2.3%	-2.0%	-2.0%	-100.0%	-100.0%	-100.0%	-100.0%	-100.0%	-100.0%	-100.0%	-100.0%	-100.0%				
<b>Total Nonfarm</b>	311,000	316,100	317,400										314,800	321,600	-6,800	-2.1%
<b>Goods Producing</b>	34,100	37,700	37,600										36,500	43,100	-6,600	-15.3%
Mining and Logging <sup>2</sup>	12,900	13,100	13,300										13,100	16,200	-3,100	-19.1%
Mining	12,600	12,600	12,600										12,600	15,500	-2,900	-18.7%
Oil & Gas	9,700	9,700	10,900										10,100	12,800	-2,700	-21.1%
Construction	12,700	13,800	13,400										13,300	14,100	-800	-5.7%
Manufacturing	8,500	10,800	10,900										10,100	12,800	-2,700	-21.1%
Seafood Processing	5,200	6,800	7,000										6,300	9,100	-2,800	-30.8%
<b>Services Providing</b>	276,900	278,400	279,800										278,400	278,500	-100	0.0%
Trade/Transportation/Utilities	61,300	60,800	61,100										61,100	61,300	-200	-0.3%
Wholesale Trade	5,900	5,900	6,000										5,900	6,400	-500	-7.8%
Retail Trade	35,700	35,100	34,900										35,200	35,500	-300	-0.8%
Food & Beverage Stores	5,600	5,800	5,700										5,700	5,600	100	1.8%
General Merchandise Stores	10,600	10,400	10,400										10,500	10,400	100	1.0%
Trans/Warehouse/Utilities	19,700	19,800	20,200										19,900	19,400	500	2.6%
Air Transportation	5,700	5,700	5,800										5,700	5,100	600	11.8%
Information	6,300	6,300	6,200										6,300	6,200	100	1.6%
Telecommunications	4,200	4,200	4,200										4,200	4,200	0	0.0%
Financial Activities	11,500	11,500	11,500										11,500	12,500	-1,000	-8.0%
Professional & Business Svcs	25,700	26,500	26,000										26,100	27,900	-1,800	-6.5%
Educational & Health Services	48,600	49,200	49,000										48,900	47,100	1,800	3.8%
Health Care	35,400	77,200	77,000										63,200	35,000	28,200	80.6%
Leisure & Hospitality	31,300	31,100	31,800										31,400	30,100	1,300	4.3%
Accommodation	6,800	6,800	7,100										6,900	6,400	500	7.8%
Food Svcs & Drinking Places	20,400	20,000	20,300										20,200	19,800	400	2.0%
Other Services	11,700	11,600	11,800										11,700	11,000	700	6.4%
<b>Government</b>	80,500	82,000	82,400										81,600	81,800	-200	-0.2%
Federal Government	14,500	14,600	14,900										14,700	14,700	0	0.0%
State Government	23,800	24,300	24,400										24,200	25,200	-1,000	-4.0%
State Education	7,200	7,700	7,600										7,500	8,000	-500	-6.3%
Local Government	42,200	43,100	43,100										42,800	42,000	800	1.9%
Local Education	23,800	24,700	24,700										24,400	24,000	400	1.7%
Tribal Government <sup>1</sup>	3,800	3,900	4,000										3,900	3,600	300	8.3%

United States. The primary statistics derived from the survey are monthly estimates of employment, hours, and earnings for the Nation, States, and major metropolitan areas. Estimates for the current year may be subject to large revisions that will be published early in the following year. CES data in the current year is presented as compared to CES data from the same months in the previous year.

county, MSA, state and national levels by industry. This data is considered to be the more definitive analysis of employment figures and trends. QCEW data in the current year is presented as compared to QCEW data from the same months in the previous year.

- Nonfarm Wage & Salary excludes self-employed workers, fishers, domestics, and unpaid family workers.

- All totals are non-seasonally adjusted totals.

- Government includes employees of public school systems and the University of Alaska.

- Totals may not equal sub-sections due to rounding.

- Source: Alaska Department of Labor and Workforce Development, Research and Analysis Section

Quick Comparisons		
16 vs 17 March	-6,400	-2.0%
17 vs 16 3rd Qtr	-6,800	-2.1%
17 vs 16 4th Qtr		

Heidi Drygas  
Commissioner

[www.labor.alaska.gov](http://www.labor.alaska.gov)



P.O. Box 111149  
Juneau, AK 99811-1149  
907.465.2700

[commissioner.labor@alaska.gov](mailto:commissioner.labor@alaska.gov)

## Press Release

COMMISSIONER'S OFFICE

FOR IMMEDIATE RELEASE  
April 21, 2017

No. 17-22

For more information: **Conor Bell, Economist**  
907-465-6037, [Conor.Bell@Alaska.Gov](mailto:Conor.Bell@Alaska.Gov)

### **Unemployment Rate at 6.4 Percent in March**

JUNEAU, Alaska— Alaska's seasonally adjusted unemployment rate was 6.4 percent in March, unchanged from February. The comparable national rate was 4.5 percent.

Preliminary estimates show employment was down by 7,100 jobs, or 2.2 percent, compared to March 2016. Substantial losses continued in oil, construction, state government, and professional and business services, which is tied to oil and construction activity. Health care, local government, and leisure and hospitality were the only industries with job growth.

While Alaska has been losing jobs for over a year now, employment loss doesn't necessarily lead to higher unemployment rates. To be counted as unemployed, a person must remain in the state and be actively seeking work.

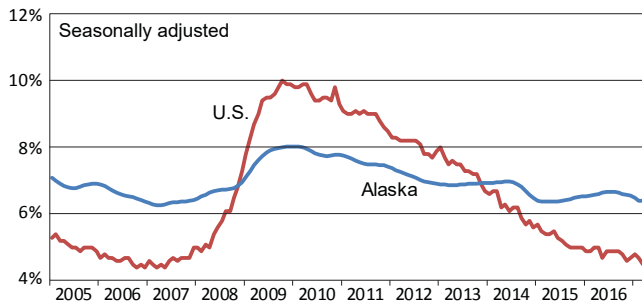
March's not-seasonally adjusted unemployment rate was 7.2 percent, down two-tenths of a percentage point from February, which is a typical seasonal change.

Unadjusted rates fell in all but four boroughs and census areas. Kusilvak Census Area had the highest unemployment rate at 20.4 percent. Aided by winter fisheries, Aleutians East Borough had the lowest rate at 1.8 percent.

###

## Unemployment Rates, Alaska and U.S.

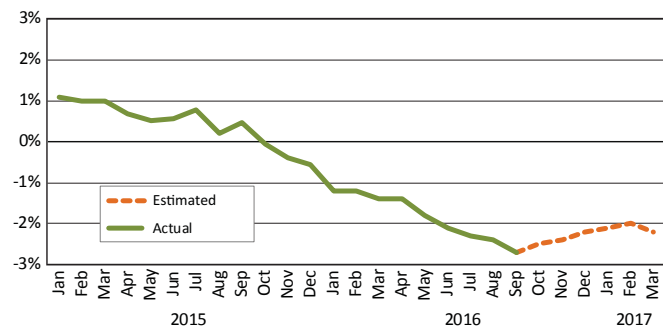
January 2005 to March 2017



Sources: Alaska Department of Labor and Workforce Development, Research and Analysis Section; and U.S. Bureau of Labor Statistics

## Wage and Salary Employment

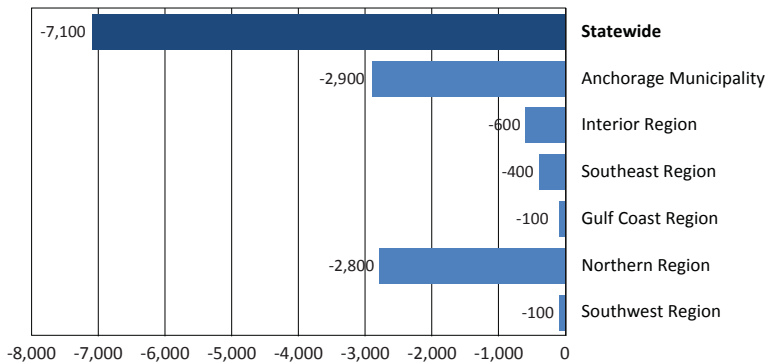
Percent change from same month the previous year



Note: Actual employment counts through June 2016 are from the benchmarked Current Employment Statistics and Quarterly Census of Employment and Wages employment series. Estimated employment counts from July through December are based on a forecast of the QCEW series.

## Regional Employment

Change from March 2016 to March 2017



Sources: Quarterly Census of Employment and Wages; and Current Employment Statistics

## Employment By Industry

	Average Monthly Employment			Compared to March 2016	
	March 2017 <sup>1</sup>	Feb 2017 <sup>1</sup>	March 2016 <sup>2</sup>	Change	Percent Chg
<b>Total Nonfarm Employment</b>	<b>316,400</b>	<b>315,200</b>	<b>323,500</b>	<b>-7,100</b>	<b>-2.2%</b>
<b>Total Private</b>	<b>235,000</b>	<b>233,900</b>	<b>241,200</b>	<b>-6,200</b>	<b>-2.6%</b>
Mining and Logging	13,000	13,000	15,600	-2,600	-16.7%
Oil and Gas	10,300	10,300	12,700	-2,400	-18.9%
Construction	13,100	13,000	14,300	-1,200	-8.4%
Manufacturing	13,300	13,000	13,700	-400	-2.9%
Trade, Transportation and Utilities	60,500	60,500	61,800	-1,300	-2.1%
Wholesale	6,200	6,200	6,400	-200	-3.1%
Retail	34,800	34,900	35,600	-800	-2.2%
Transportation, Warehousing and Utilities	19,500	19,400	19,800	-300	-1.5%
Information	6,200	6,200	6,200	0	0.0%
Financial Activity	11,700	11,700	11,700	0	0.0%
Professional and Business Services	26,600	26,700	27,700	-1,100	-4.0%
Education and Health	49,200	48,900	48,500	700	1.4%
Health Care	36,400	35,800	35,500	900	2.5%
Leisure and Hospitality	31,000	30,400	30,800	200	0.6%
Other Services	10,400	10,500	10,900	-500	-4.6%
<b>Total Government</b>	<b>81,400</b>	<b>81,300</b>	<b>82,300</b>	<b>-900</b>	<b>-1.1%</b>
Federal	14,700	14,600	14,800	-100	-0.7%
State	24,200	24,200	25,400	-1,200	-4.7%
Local	42,500	42,500	42,100	400	1.0%

<sup>1</sup>Employment estimates for 2017 are based on a forecast of Quarterly Census of Employment and Wages (QCEW) data.

<sup>2</sup>Employment estimates for 2016 are from the benchmarked Current Employment Statistics employment data.

# Labor Force by Borough and Census Area, Not Seasonally Adjusted<sup>1</sup>

	Civilian Labor Force <sup>2</sup>			Unemployed					
	3/17 <sup>P</sup>	2/17	3/16	Number			Rate		
				3/17 <sup>P</sup>	2/17	3/16	3/17 <sup>P</sup>	2/17	3/16
<b>Alaska</b>	<b>362,198</b>	<b>360,469</b>	<b>357,230</b>	<b>26,169</b>	<b>26,770</b>	<b>25,741</b>	<b>7.2</b>	<b>7.4</b>	<b>7.2</b>
<b>Anchorage/Mat-Su Region</b>	<b>204,887</b>	<b>204,345</b>	<b>201,532</b>	<b>13,477</b>	<b>13,568</b>	<b>12,591</b>	<b>6.6</b>	<b>6.6</b>	<b>6.2</b>
Anchorage, Municipality	157,950	157,462	155,410	9,161	9,215	8,497	5.8	5.9	5.5
Matanuska-Susitna Borough	46,937	46,883	46,122	4,316	4,353	4,094	9.2	9.3	8.9
<b>Gulf Coast Region</b>	<b>37,755</b>	<b>37,532</b>	<b>36,988</b>	<b>3,172</b>	<b>3,286</b>	<b>3,318</b>	<b>8.4</b>	<b>8.8</b>	<b>9.0</b>
Kenai Peninsula Borough	26,634	26,487	26,128	2,423	2,522	2,531	9.1	9.5	9.7
Kodiak Island Borough	6,708	6,736	6,531	296	298	297	4.4	4.4	4.5
Valdez-Cordova Census Area	4,413	4,309	4,329	453	466	490	10.3	10.8	11.3
<b>Interior Region</b>	<b>52,171</b>	<b>51,705</b>	<b>51,266</b>	<b>3,806</b>	<b>3,984</b>	<b>3,734</b>	<b>7.3</b>	<b>7.7</b>	<b>7.3</b>
Denali Borough	628	629	596	126	134	113	20.1	21.3	19.0
Fairbanks North Star Borough	46,086	45,603	45,338	2,878	2,976	2,789	6.2	6.5	6.2
Southeast Fairbanks Census Area	3,021	3,014	2,962	326	360	359	10.8	11.9	12.1
Yukon-Koyukuk Census Area	2,436	2,459	2,370	476	514	473	19.5	20.9	20.0
<b>Northern Region</b>	<b>10,432</b>	<b>10,377</b>	<b>11,382</b>	<b>1,210</b>	<b>1,270</b>	<b>1,220</b>	<b>11.6</b>	<b>12.2</b>	<b>10.7</b>
Nome Census Area	3,811	3,762	4,171	482	518	510	12.6	13.8	12.2
North Slope Borough	3,937	3,939	4,301	256	261	244	6.5	6.6	5.7
Northwest Arctic Borough	2,684	2,676	2,910	472	491	466	17.6	18.3	16.0
<b>Southeast Region</b>	<b>35,963</b>	<b>35,462</b>	<b>35,325</b>	<b>2,523</b>	<b>2,639</b>	<b>2,669</b>	<b>7.0</b>	<b>7.4</b>	<b>7.6</b>
Haines Borough	939	904	944	107	113	141	11.4	12.5	14.9
Hoonah-Angoon Census Area	986	989	982	166	176	185	16.8	17.8	18.8
Juneau, City and Borough	17,160	16,998	16,757	840	859	800	4.9	5.1	4.8
Ketchikan Gateway Borough	6,517	6,479	6,430	484	500	535	7.4	7.7	8.3
Petersburg Borough	1,364	1,369	1,341	140	146	149	10.3	10.7	11.1
Prince of Wales-Hyder Census Area	2,793	2,746	2,756	361	380	388	12.9	13.8	14.1
Sitka, City and Borough	4,320	4,142	4,246	200	224	219	4.6	5.4	5.2
Skagway, Municipality	586	591	589	115	127	133	19.6	21.5	22.6
Wrangell, City and Borough	1,067	1,024	1,049	89	89	93	8.3	8.7	8.9
Yakutat, City and Borough	231	220	231	21	25	26	9.1	11.4	11.3
<b>Southwest Region</b>	<b>20,990</b>	<b>21,048</b>	<b>20,737</b>	<b>1,983</b>	<b>2,024</b>	<b>2,211</b>	<b>9.4</b>	<b>9.6</b>	<b>10.7</b>
Aleutians East Borough	3,354	3,457	3,285	60	60	71	1.8	1.7	2.2
Aleutians West Census Area	5,022	5,111	4,903	109	108	112	2.2	2.1	2.3
Bethel Census Area	7,141	6,943	7,068	960	972	1,045	13.4	14.0	14.8
Bristol Bay Borough	241	244	237	31	34	35	12.9	13.9	14.8
Dillingham Census Area	1,963	2,041	1,930	191	196	205	9.7	9.6	10.6
Kusilvak Census Area	2,697	2,704	2,748	550	569	654	20.4	21.0	23.8
Lake and Peninsula Borough	572	548	566	82	85	89	14.3	15.5	15.7

P = Preliminary. As more information becomes available, data are revised every month for the previous month and again at the end of every calendar year.

Note: The official definition of unemployment excludes anyone who has not made an active attempt to find work in the four-week period up to and including the week that includes the 12th of the reference month. Many in rural Alaska do not meet the definition because they have not conducted an active job search due to the scarcity of employment opportunities.

<sup>1</sup>Unemployment rates that are not seasonally adjusted should not be compared with those that are.

<sup>2</sup>The labor force is the sum of the unemployed and the employed.

Source: Alaska Department of Labor and Workforce Development, Research and Analysis Section; and U.S. Bureau of Labor Statistics

