



# Anchorage Employment Report

CO-SPONSORED BY:



## TABLE OF CONTENTS

EXECUTIVE SUMMARY .....	2
GOODS PRODUCING JOBS SUMMARY .....	3
SERVICES PROVIDING JOBS SUMMARY .....	4
HEALTH CARE SNAPSHOT .....	4
PROFESSIONAL & BUSINESS SERVICES SNAPSHOT .....	5
ANCHORAGE HOUSING .....	6
ALASKA FORECLOSURES & BANKRUPTCIES.....	7
UNEMPLOYMENT CLAIMS .....	8
UNEMPLOYMENT ANALYSIS OF SOUTHCENTRAL REGION (TABLE).....	9
LABOR FORCE ANALYSIS CHARTS.....	10
ANCHORAGE EMPLOYMENT ESTIMATES TABLE.....	11
ALASKA EMPLOYMENT ESTIMATES TABLE .....	11
STATE OF ALASKA PRESS RELEASE.....	12

All data referenced in this employment report is from the State of Alaska, Dept. of Labor & Workforce Development website: [www.laborstats.alaska.gov](http://www.laborstats.alaska.gov) and from the U.S. Bureau of Labor Statistics: [www.bls.gov](http://www.bls.gov).

**Report compiled by Anchorage Economic Development Corp. Research Department.**

**Report generously sponsored by First National Bank Alaska and Alaska Communications.**

If you are interested in learning more about this data or are interested in how AEDC can help you develop a report, call AEDC at 907.258.3700.

## EXECUTIVE SUMMARY

### MONTHLY UNEMPLOYMENT

The not seasonally adjusted unemployment rate for Anchorage in May was 5.8 percent, flat compared to the April revised rate. **This is 1.7 percent above the national not seasonally adjusted rate of 4.1 percent and 1.0 percent below the statewide not seasonally adjusted rate of 6.8 percent.** The May unemployment rate for Anchorage was 0.5 percent higher than it was in May 2016. As always, it should be noted that these are preliminary survey figures for May and will be revised next month.

### YEAR-TO-DATE UNEMPLOYMENT

The 2017 average year-to-date (YTD) not seasonally adjusted unemployment rate in Anchorage was 5.8 percent at the end of May, 0.1 percent higher than at this time last year. **A decrease of 366 in the employment total and an increase of 98 in the Anchorage labor force during the YTD period has resulted in the reported unemployment total increasing by 207.** The total number of unemployed people in Anchorage for the month of May is estimated at 9,117 (those actively looking for jobs), 758 more than May 2016. In the Mat-Su Borough, the YTD average monthly unemployment rate of 8.9 percent is down 0.5 percent from 2016 YTD while the Kenai Peninsula's unemployment rate of 8.7 has decreased by 1.1 percent during the same period (see the charts on pages 9-10 for more details).

*It is important to note that the Anchorage unemployment numbers represent the labor force residing in Anchorage, and do not describe the number of filled positions in Anchorage. The industry employment estimates referenced in the remainder of this report are representative of the number of jobs in the Municipality of Anchorage, regardless of the job holder's place of residency.*

### ANCHORAGE INDUSTRY EMPLOYMENT ESTIMATES

As for Anchorage industry employment estimates, which includes total jobs in Anchorage held by city residents and commuters, the YTD average for 2017 continues to average a loss of 1,700 jobs (-1.1%) so far compared to the same period in 2016. The private sector (total jobs minus government jobs) at 121,800 jobs shrunk by 1,600 (-1.3%) jobs during this time, while Government employment at 29,500 jobs has decreased by 100 (-0.3%). Federal jobs are flat so far. State government jobs have decreased by 300 (-2.9%) and Local Government jobs have increased by 200 (+1.9%).

# 154,400

Total jobs in Anchorage  
May 2017 (preliminary)

Please note that these figures will likely be revised as more data is received and additional analysis is conducted.

The Goods Producing category lost 1,400 jobs YTD (-11.6%). The Mining & Logging industry (which includes Oil & Gas employment) continues to decline locally and is showing 700 fewer jobs (-21.2%). Construction is down 700 jobs YTD (-10.1%), while Manufacturing at 1,900 YTD is flat compared to 2016.

Services Providing industries have lost 300 jobs YTD (-0.2%). Categories showing increases include Health Care up 300 jobs (+1.5%), and Leisure & Hospitality (Tourism) up 100 (+0.6%). Services Providing industries showing losses so far in 2017 include Retail down 600 jobs (-3.4%), Trade/Transportation/Utilities (TTU) down 700 jobs (-2.1%), Financial Activities down 500 jobs (-6.4%) and Professional & Business Services down 200 jobs (-1.1%).

# 5.8%

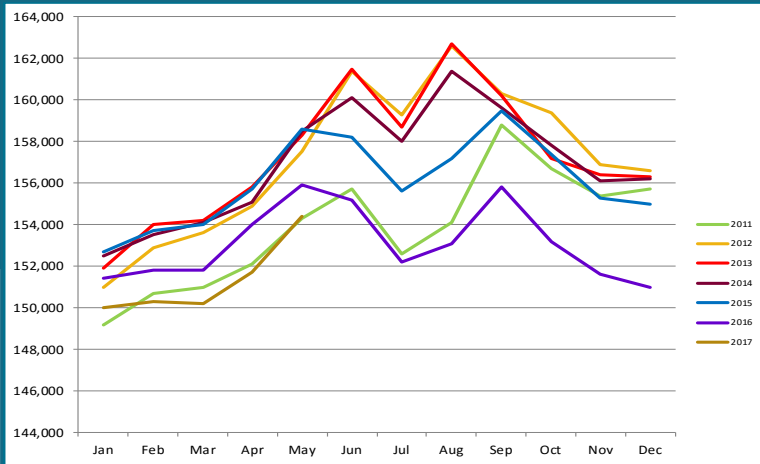
May 2017  
Unemployment Rate  
for Anchorage (preliminary)

# 5.8%

2017 YTD  
Unemployment Rate  
for Anchorage (preliminary)

## ANCHORAGE EMPLOYMENT

Municipality of Anchorage 2011-Present



## GOODS PRODUCING JOBS

### CONSTRUCTION WORK, MINING, OIL & GAS PRODUCTION, MANUFACTURING

Losses in the number of Goods Producing jobs in Anchorage continue to lead the overall downward trend 2017 YTD. The year to date average of 10,700 is 1,400 (-11.6%) fewer jobs than the same period in 2016. A decrease of 700 (-21.2%) jobs in the Mining & Logging industry, which includes Oil & Gas employment. YTD Construction employment is down 700 (-10.1%) jobs. Manufacturing is flat at 1,900 jobs. Total Anchorage Goods Producing employment is now at 2000 employment levels.

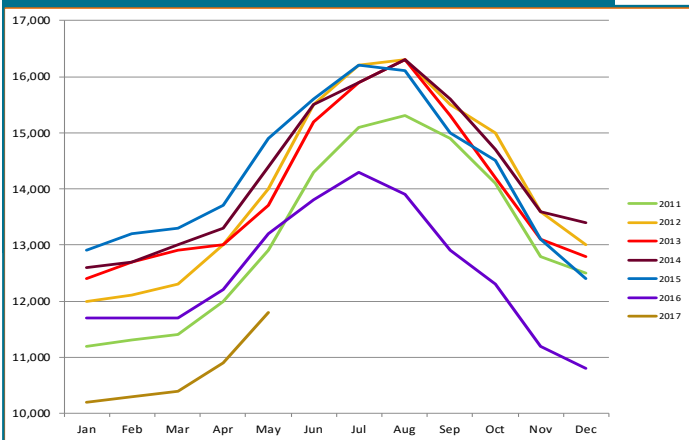
The Oil & Gas sector YTD job total shows 700

(-21.9%) fewer jobs so far this year compared to 2016 YTD though year over year losses seem to be slowing. Statewide, oil & gas industry YTD employment is down 2,000 jobs (-16.1%) compared to the same period in 2016. The ongoing market uncertainty of \$45-\$50 per barrel domestic and international oil prices are one limiting factor for industry job growth. Lack of certainty from the State of Alaska for tax and fiscal policy is an even greater limiter of industry investment and the jobs that would accompany new investment.

The Construction industry, as noted earlier, is showing 700 YTD job losses compared to the same period in 2016. Anchorage building permit application values, a measure of interest in construction, have reached \$257.5 million through the June 9, 2017 reporting period, 5.2 percent higher than the \$244.7 million at this point last year. Projects submitted for permits are a relatively healthy mix of private sector and government projects.

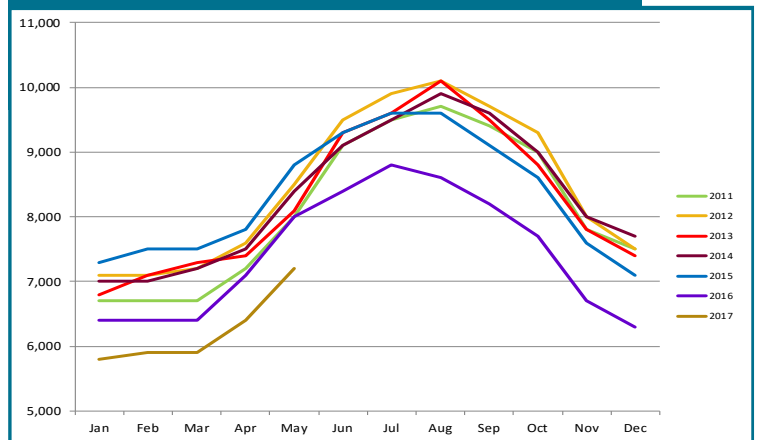
## GOODS PRODUCING JOBS

Municipality of Anchorage 2011-Present



## CONSTRUCTION EMPLOYMENT

Municipality of Anchorage 2011-Present



*Those jobs that are specifically tied to production, not those which support the production or maintenance of the production jobs.*

In Anchorage:

11,800

**GOODS PRODUCING JOBS**

May 2017 (preliminary)



7,200

**CONSTRUCTION JOBS**

May 2017 (preliminary)



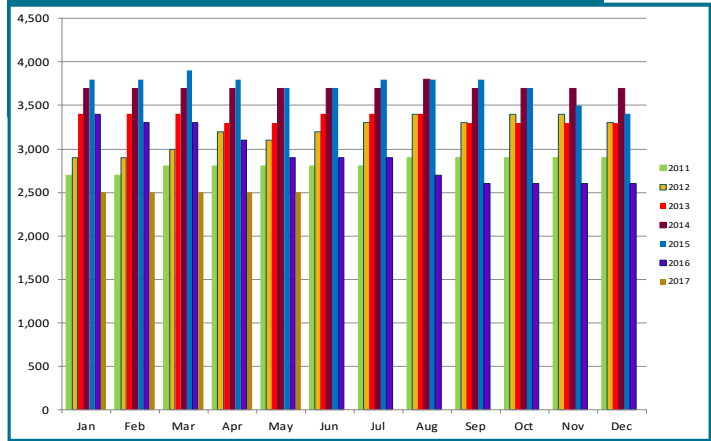
2,500

**OIL & GAS JOBS**

May 2017 (preliminary)

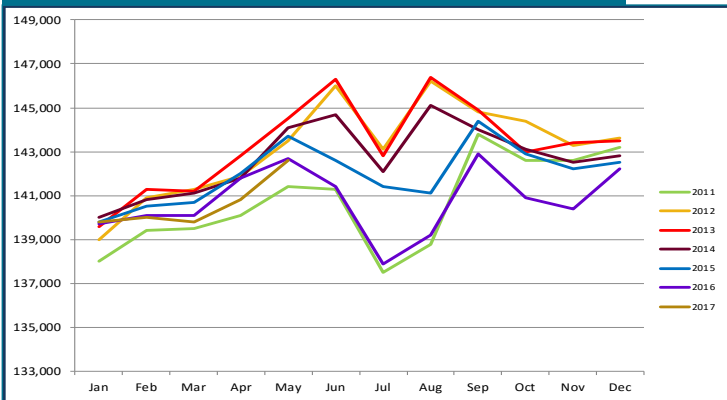
**OIL & GAS EMPLOYMENT**

Municipality of Anchorage 2011-Present



**SERVICES PROVIDING JOBS**

Municipality of Anchorage 2011-Present



**SERVICES PROVIDING JOBS**

**ENGINEERING, RETAIL, TOURISM, HEALTH CARE, ETC.**

**Services Providing jobs in Anchorage totaled 142,600 for May.**

Overall, the Anchorage YTD average is down 300 (-0.2%) jobs from 2016 YTD.

The Trade/Transportation/Utilities (TTU) industry's loss rate is -2.1 percent so far this year. The YTD employment average in this industry is down 700 jobs this year. The Retail Trade sector, a subset of the TTU industry, is down 600 jobs YTD compared to 2016 YTD, while wholesale trade and the Transportation/Warehouse/Utilities sectors are flat.

The Government jobs monthly average in Anchorage is down 100 jobs YTD from 2016 due to losses in the State Government sector averaging 300 (-2.9%) fewer jobs than at this point last year. Total State government employment is down 1,000 (-4.0%) YTD. Local Government positions in Anchorage have increased by 200. Federal Government is flat YTD.

**HEALTH CARE EMPLOYMENT**

Employment in the Health Care sector continues to do well, with 300 (+1.5%) more jobs over 2016 YTD. Job growth in this sector has moderated following a better than average period of growth in 2016. As noted in AEDC's 2017 Economic Forecast report, this sector will be one of the bright points in an uncertain year for job growth.

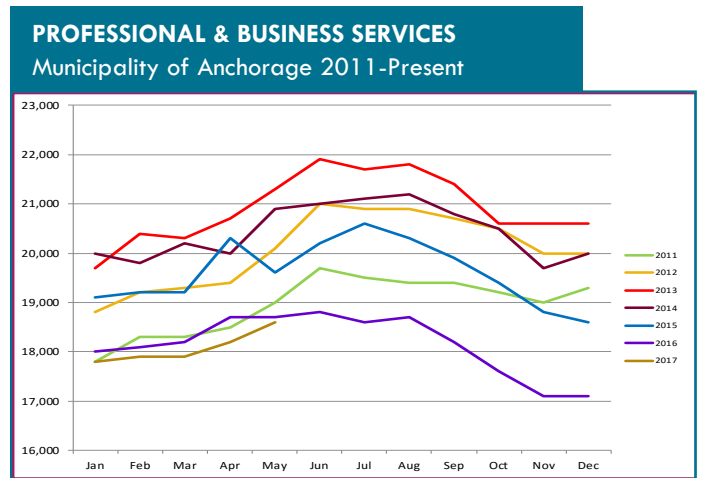
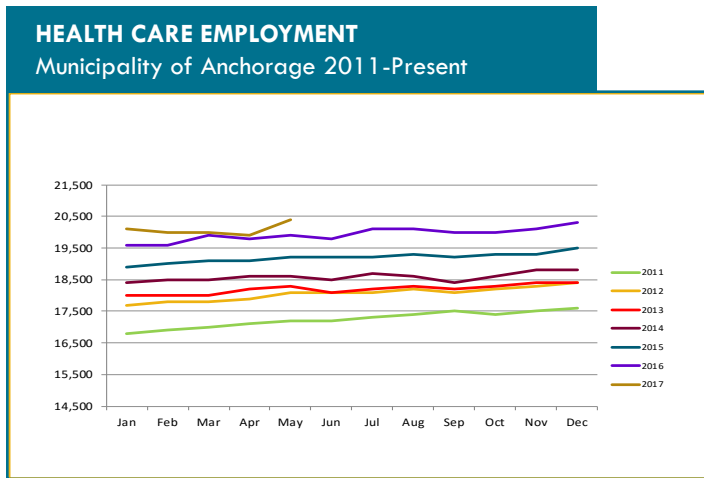
## TRANSPORTATION

Monthly estimates in the Transportation/Warehouse/Utilities sector (a sub-group of the Trade/Transportation/Utilities industry) continues to show stability with no change YTD. Solid national economic indicators point to moderate growth projected in the U.S. economy. The continuing strength in the air cargo industry at Ted Stevens Anchorage International Airport, combined with a strong visitor season in 2017, underscores that this segment of the Trade/Transportation/Utilities industry will continue to be a steady component of the Anchorage economy.

## PROFESSIONAL & BUSINESS SERVICES

CONSULTING, ENGINEERING, ARCHITECTURE, LEGAL SERVICES, ACCOUNTING, SCIENTIFIC RESEARCH, WASTE MANAGEMENT & ADMINISTRATIVE SERVICES.

Professional and Business services has now dropped 200 (-1.1%) jobs YTD from 2016. Highly curtailed state capital budgets, continuing reduced capital investments by most oil field companies give clear insight to the cause of this industry's decreases. However, losses are moderating significantly compared to the loss of over 1,400 jobs in this sector in 2016.



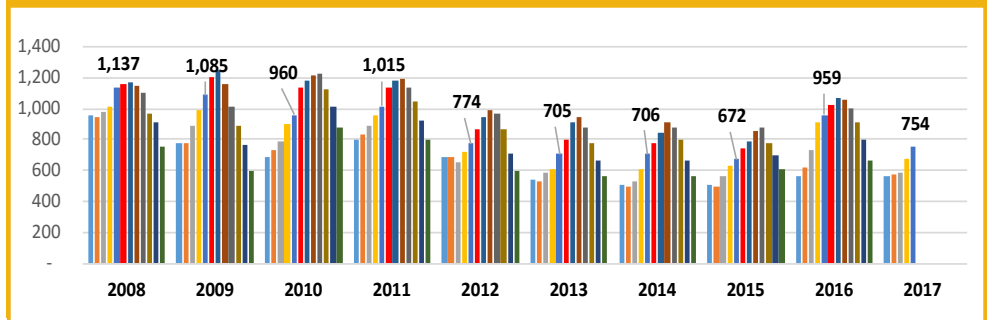
## ANCHORAGE HOUSING

### SINGLE FAMILY HOME LISTINGS

May data from Anchorage Multiple Listing Service shows that inventories of homes for sale, at 754 in Anchorage, were down 21 percent compared to May of last year, the seventh highest inventory level for this month in the last 10 years. The Anchorage housing market remains a relatively balanced market of buying and selling opportunities for home sellers and home buyers.

### ANCHORAGE SINGLE FAMILY HOME LISTINGS

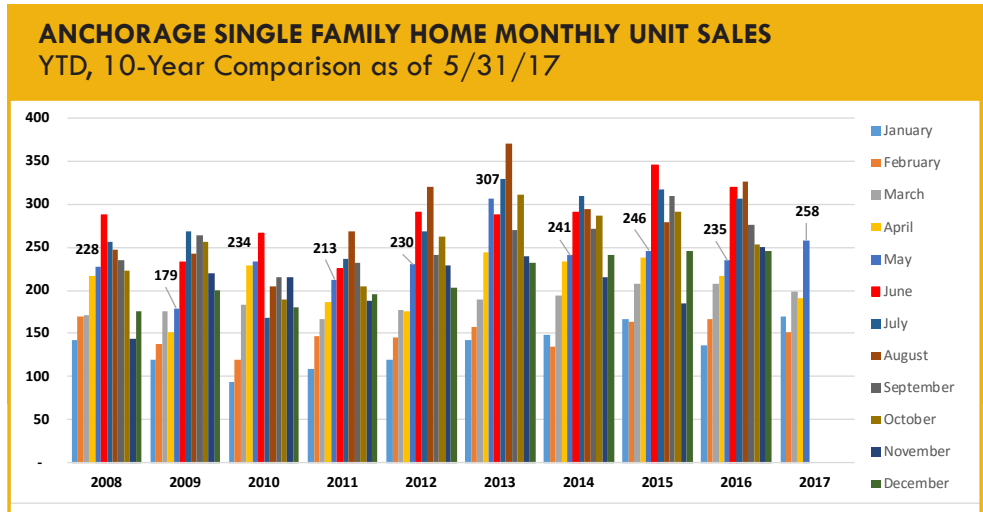
YTD Total, 10-Year Comparison



Source: Anchorage MLS

## SINGLE FAMILY HOME MONTHLY UNIT SALES

Anchorage monthly sales of single family homes in May were the second-best for the month in the last 10 years. Two hundred fifty-eight units were sold, a 10 percent increase compared to May 2016.



Source: Anchorage MLS

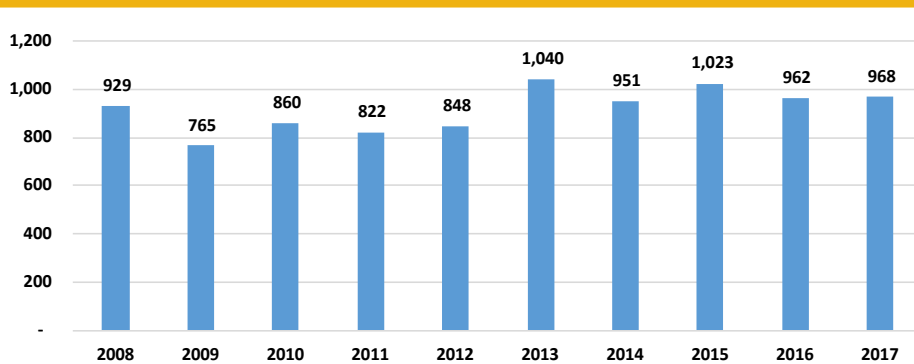


# 258

Single family home unit sales, May 2017

## ANCHORAGE SINGLE FAMILY TOTAL UNIT SALES

YTD Total, 10-Year Comparison as of 5/31/17



Source: Anchorage MLS

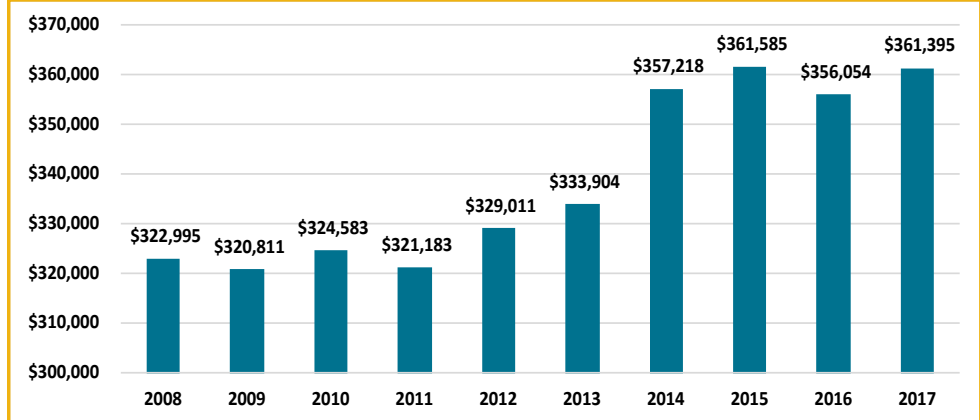
## SINGLE FAMILY HOME YTD TOTAL UNIT SALES

YTD sales for the first five months of 2017 are slightly ahead the same period in 2016 with 968 units sold so far in 2017, up 0.6 percent compared to the same period last year. 2017 sales are still tracking as the third best year for total sales in the last decade.

## SINGLE FAMILY HOME AVERAGE SALES PRICE

The average price for a home sold in Anchorage YTD through the end of May stood at \$361,395, up \$5,341 compared to the same period in 2016. While average sales prices can vary widely from month to month, the annual average is another good measure of market health. At 1.5 percent higher than at this point last year, this price is second highest for the 10-year average for this five-month period.

### ANCHORAGE SINGLE FAMILY HOME AVG. SALES PRICE YTD, 10-Year Comparison as of 5/31/17



Source: Anchorage MLS



# \$361,395

Average home sale price in  
Anchoage, 2017 YTD

## ALASKA FORECLOSURES

Alaska continues to show solid indicators in this category. Out of the 50 states and District of Columbia, Alaska is in a five-way tie for next to last place at 0.3 percent of all active mortgages in foreclosure for the 12 months ending March 2017. The national average was 0.8 percent. Another positive indicator is Alaska's serious delinquency rate, at 1.1 percent of all mortgages statewide, well below the national average of 1.8 percent. Current foreclosure and serious delinquency data shows that the Alaska housing market remains solidly healthy as of this report.

Source: CoreLogic

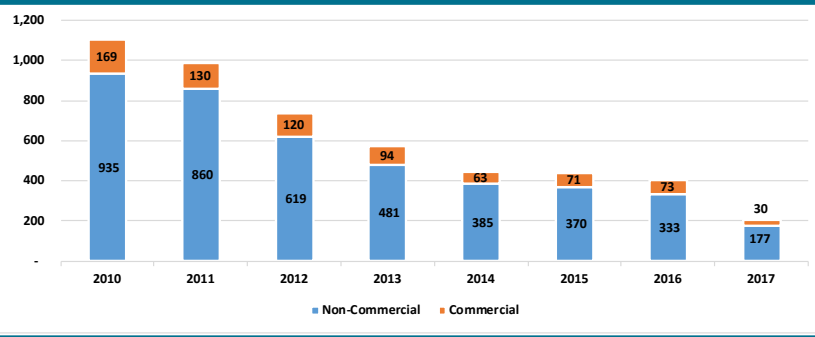


## ALASKA BANKRUPTCIES

According to recently released data from the American Bankruptcy Institute, Alaska bankruptcies remain at near record lows. For the five months ending May 31, Alaska ranked 51st out of the 50 states and District of Columbia with a per capita rate of 0.71 bankruptcies per 1,000 Alaskans. This compares to the national per capita rate of 2.54 bankruptcies per 1,000 Americans. The total number of bankruptcies in Alaska YTD, at 207, are up by 29 percent compared to the same timeframe in 2016. As measured by this metric, the overall financial health of Alaska's citizens and businesses continues to demonstrate results that are much better than might be expected.

## ANNUAL BANKRUPTCY FILINGS

As of 5/31/17

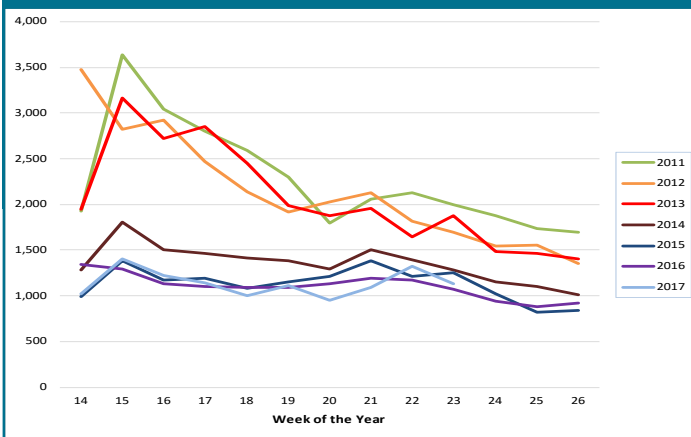


Source: American Bankruptcy Institute

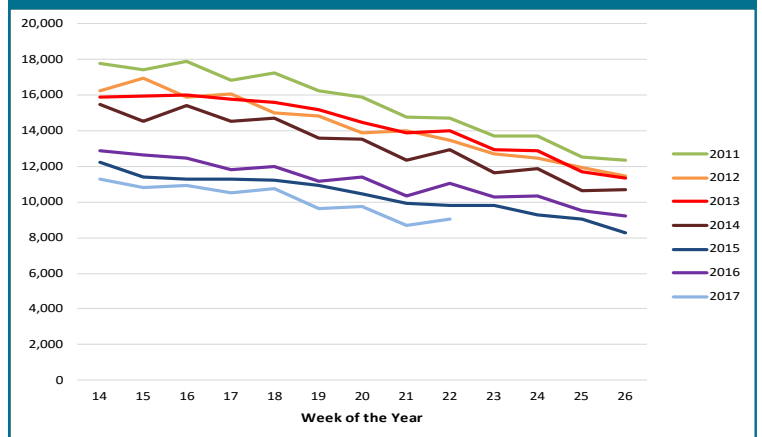
## UNEMPLOYMENT CLAIMS

Initial unemployment claim applications can be interpreted as a proxy for layoffs. They tend to fall as job growth accelerates. As noted in our last report, weekly totals in 2017 continue to track at or below 2015 and 2016 levels, still well under recent historic highs seen in 2011. This continuing low range for initial unemployment claims is likely a result of mitigating factors such as workers retiring in the face of the recession, job losses impacting non-resident workers and laid off workers leaving Alaska for better job opportunities in the Lower 48 states. In all three cases, these are workers not applying for unemployment benefits in Anchorage or Alaska, thereby keeping the unemployment rate lower than might be expected.

### INITIAL UNEMPLOYMENT CLAIMS IN ALASKA, Q2



### CONTINUING UNEMPLOYMENT CLAIMS IN ALASKA, Q2



Continuing claims figures help to show how well unemployed workers are re-entering the workforce. This total does not include workers receiving extended benefits from the federal government. So far in 2017 weekly numbers in this category continue to track slightly below 2015 for the same time period, remaining well below recent historic highs reported in 2011. This is another indicator of some continuing strength to be found in the Alaska economy, though we continue to expect to see a slowing of this momentum reflected in these figures later in the coming year. Declining job availability will increasingly affect the ability to find jobs for those workers included in this metric. This will likely result in an increase in the numbers of workers receiving unemployment benefits in the long term, though how significant that increase will be is difficult to project.

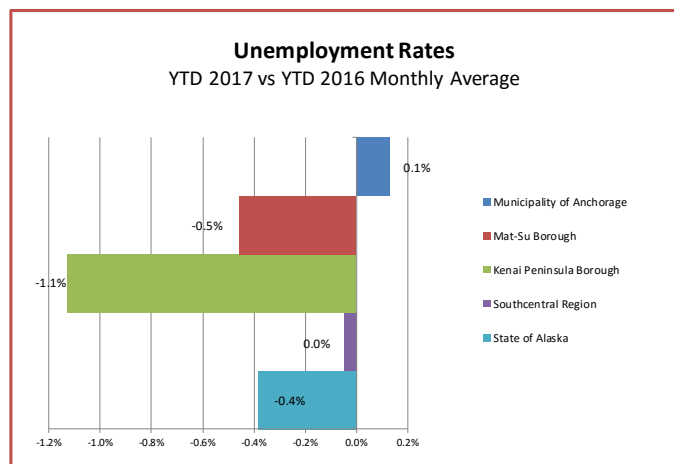
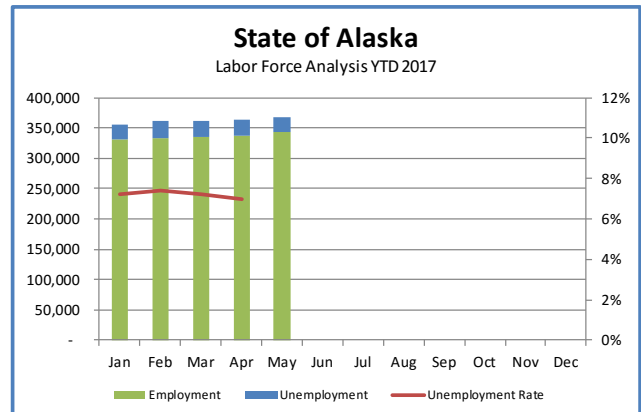
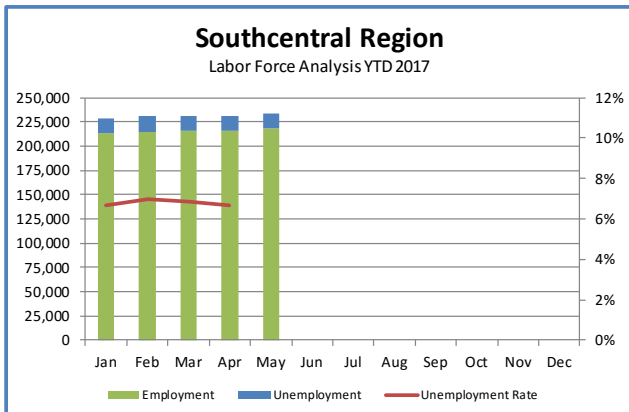
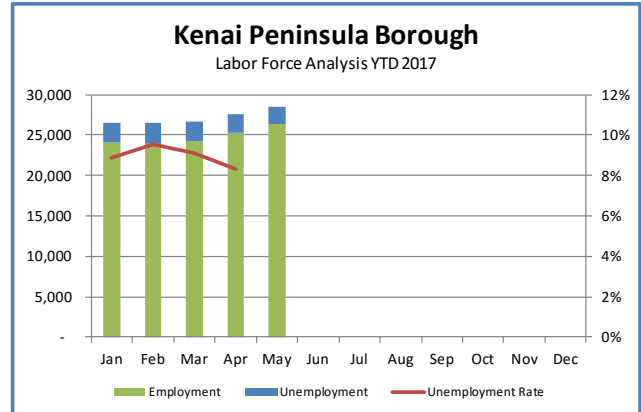
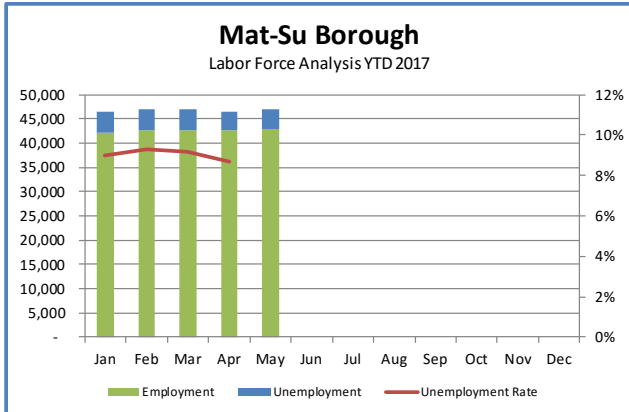
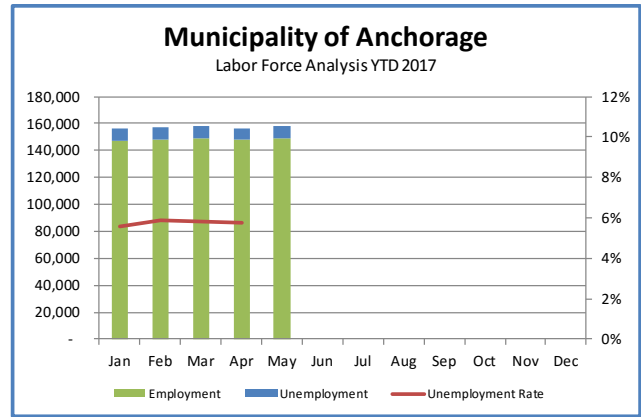
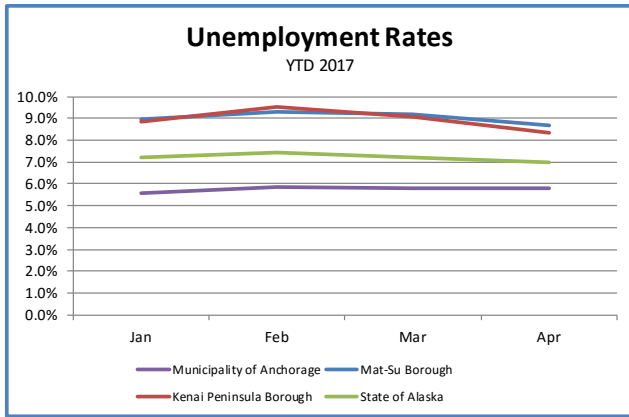
## UNEMPLOYMENT ANALYSIS (YTD, 2017)

### Anchorage, Mat-Su, Kenai Peninsula Borough

	Jan	Feb	Mar	Apr	May	Jun	Jul	Aug	Sep	Oct	Nov	Dec	17 YTD Avg	16 YTD Avg	17 vs 16 (YTD)
<b>Municipality of Anchorage</b>															
Labor Force	156,099	157,462	157,949	156,645	158,406								157,312	157,214	98
Employment	147,369	148,247	148,799	147,597	149,289								148,003	148,369	(366)
Unemployment	8,730	9,215	9,150	9,048	9,117								9,052	8,846	207
Unemployment Rate	5.6%	5.9%	5.8%	5.8%	5.8%								5.8%	5.6%	0.1%
<b>Mat-Su Borough</b>															
Labor Force	46,387	46,883	46,937	46,554	46,863								46,725	45,022	1,703
Employment	42,223	42,530	42,625	42,518	43,000								42,474	40,822	1,653
Unemployment	4,164	4,353	4,312	4,036	3,863								4,146	4,201	(55)
Unemployment Rate	9.0%	9.3%	9.2%	8.7%	8.2%								8.9%	9.3%	-0.5%
<b>Kenai Peninsula Borough</b>															
Labor Force	26,481	26,487	26,670	27,629	28,467								27,147	26,507	640
Employment	24,134	23,965	24,249	25,334	26,308								24,421	23,915	506
Unemployment	2,347	2,522	2,421	2,297	2,159								2,349	2,593	(243)
Unemployment Rate	8.9%	9.5%	9.1%	8.3%	7.6%								8.7%	9.8%	-1.1%
<b>Southcentral Region</b>															
Labor Force	228,967	230,832	231,556	230,828	233,736								230,546	228,743	1,803
Employment	213,726	214,742	215,673	215,447	218,597								214,897	213,105	1,793
Unemployment	15,241	16,090	15,883	15,381	15,139								15,649	15,639	10
Unemployment Rate	6.7%	7.0%	6.9%	6.7%	6.5%								6.8%	6.8%	0.0%
<b>State of Alaska</b>															
Labor Force	356,084	360,469	362,177	363,136	367,626								361,898	357,042	4,857
Employment	330,459	333,699	336,036	337,759	342,616								334,488	330,227	4,261
Unemployment	25,625	26,770	26,141	25,377	25,010								25,785	26,815	(1,030)
Unemployment Rate	7.2%	7.4%	7.2%	7.0%	6.8%								7.1%	7.5%	-0.4%

**\*Note:** These numbers reflect employment, unemployment, etc. for only those people that are residence of the specified City/Region, thus are not inclusive of people who commute to another city for their jobs.

(Ex: Someone lives in Wasilla but works in Anchorage. They would be counted in the Mat-Su Borough's labor force and employment numbers, not the Municipality of Anchorage numbers)



# INDUSTRY EMPLOYMENT ESTIMATES 2017

## Municipality of Anchorage

Federal Data Series	CES					CES							2017 YTD Avg.	2016 YTD Avg.	2017 vs 2016 YTD Change	% Change
	Jan	Feb	Mar	Apr	May	Jun	Jul	Aug	Sep	Oct	Nov	Dec				
	Revised	Revised	Revised	Revised	Preliminary											
% Change from same month year ago	-0.9%	-1.0%	-1.1%	-1.5%	-1.0%	-100.0%	-100.0%	-100.0%	-100.0%	-100.0%	-100.0%	-100.0%				
<b>Total Nonfarm</b>	150,000	150,300	150,200	151,700	154,400								151,300	153,000	-1,700	-1.1%
<b>Goods Producing</b>	10,200	10,300	10,400	10,900	11,800								10,700	12,100	-1,400	-11.6%
Mining and Logging <sup>2</sup>	2,600	2,600	2,600	2,600	2,600								2,600	3,300	-700	-21.2%
Oil & Gas	2,500	2,500	2,500	2,500	2,500								2,500	3,200	-700	-21.9%
Construction	5,800	5,900	5,900	6,400	7,200								6,200	6,900	-700	-10.1%
Manufacturing	1,800	1,800	1,800	1,900	2,100								1,900	1,900	0	0.0%
<b>Services Providing</b>	139,800	140,000	139,800	140,800	142,600								140,600	140,900	-300	-0.2%
Trade/Transportation/Utilities	32,200	32,000	31,900	32,200	33,200								32,300	33,000	-700	-2.1%
Wholesale Trade	4,700	4,700	4,600	4,700	4,800								4,700	4,700	0	0.0%
Retail Trade	17,300	16,800	16,800	17,000	17,200								17,000	17,600	-600	-3.4%
Trans/Warehouse/Utilities	10,300	10,500	10,500	10,600	11,200								10,600	10,600	0	0.0%
Information	4,000	3,900	3,900	3,900	3,800								3,900	4,000	-100	-2.5%
Financial Activities	7,300	7,300	7,300	7,400	7,400								7,300	7,800	-500	-6.4%
Professional & Business Svcs	17,800	17,900	17,900	18,200	18,600								18,100	18,300	-200	-1.1%
Educational & Health Services	26,500	26,500	26,500	26,900	26,900								26,700	25,400	1,300	5.1%
Health Care	20,100	20,000	20,000	19,900	20,400								20,100	19,800	300	1.5%
Leisure & Hospitality	17,000	17,000	17,000	16,900	17,400								17,100	17,000	100	0.6%
Accommodation	3,100	3,100	3,100	3,200	3,200								3,100	3,200	-100	-3.1%
Food Svcs & Drinking Places	11,600	11,400	11,400	11,600	12,000								11,600	11,300	300	2.7%
Other Services	5,600	5,700	5,700	5,700	5,800								5,700	5,700	0	0.0%
<b>Government</b>	29,400	29,600	29,500	29,600	29,400								29,500	29,600	-100	-0.3%
Federal Government	8,500	8,500	8,500	8,400	8,500								8,500	8,500	0	0.0%
State Government	10,000	10,100	10,100	10,200	9,800								10,000	10,300	-300	-2.9%
State Education	2,500	2,700	2,700	2,700	2,200								2,600	2,700	-100	-3.7%
Local Government	10,900	10,900	10,900	11,000	11,000								10,900	10,700	200	1.9%
Local Education	8,000	8,000	8,000	8,100	8,000								8,000	7,800	200	2.6%

The Current Employment Statistics (CES) survey, is based on a survey of approximately 146,000 businesses and government agencies representing approximately 623,000 worksites throughout the United States. The primary statistics derived from the survey are monthly estimates of employment, hours, and earnings for the Nation, States, and major metropolitan areas. Estimates for the current year may be subject to large revisions that will be published early in the following year. CES data in the current year is presented as compared to CES data from the same months in the previous year.

The Quarterly Census of Employment and Wages (QCEW) program publishes a quarterly count of employment and wages reported by employers covering 98 percent of U.S. jobs, available at the county, MSA, state and national levels by industry. This data is considered to be the more definitive analysis of employment figures and trends. QCEW data in the current year is presented as compared to QCEW data from the same months in the previous year.

- Nonfarm Wage & Salary excludes self-employed workers, fishers, domestics, and unpaid family workers.

- All totals are seasonally non-adjusted totals.

- Government includes employees of public school systems and the University of Alaska.

- Source: Alaska Department of Labor and Workforce Development, Research and Analysis Section

\* Note: The above numbers are representative of all people employed in the Municipality of Anchorage, this is inclusive of workers who claim residence outside of the Municipality of Anchorage. (Ex: someone who lives in the Mat-Su, but works in Anchorage would be included in this number)

### Quick Comparisons

17 vs 16 March	-1,500	-1.0%
17 vs 16 1st Qtr	-1,500	-1.0%
17 vs 16 2nd Qtr	-1,900	-1.2%
17 vs 16 3rd Qtr.		
17 vs 16 4th Qtr.		

# INDUSTRY EMPLOYMENT ESTIMATES 2017

## State of Alaska

Federal Data Series	CES					CES							2017 YTD Avg.	2016 YTD Avg.	2017 vs 2016 YTD Change	% Change
	Jan	Feb	Mar	Apr	May	Jun	Jul	Aug	Sep	Oct	Nov	Dec				
	Revised	Revised	Revised	Revised	Preliminary											
% Change from same month year ago	-2.4%	-1.8%	-2.2%	-2.4%	-1.8%	-100.0%	-100.0%	-100.0%	-100.0%	-100.0%	-100.0%	-100.0%				
<b>Total Nonfarm</b>	311,000	316,800	317,400	322,000	334,600								320,400	327,300	-6,900	-2.1%
<b>Goods Producing</b>	34,100	37,800	37,700	38,300	38,200								37,200	43,300	-6,100	-14.1%
Mining and Logging <sup>2</sup>	12,900	13,000	13,300	13,400	13,500								13,200	16,000	-2,800	-17.5%
Mining	12,600	12,500	12,400	12,500	12,600								12,500	15,100	-2,600	-17.2%
Oil & Gas	9,700	9,700	10,900	10,900	11,000								10,400	12,400	-2,000	-16.1%
Construction	12,700	13,800	14,100	14,200	15,800								14,100	15,000	-900	-6.0%
Manufacturing	8,500	11,000	10,500	10,700	8,900								9,900	12,400	-2,500	-20.2%
Seafood Processing	5,200	6,900	6,300	6,300	5,000								5,900	8,500	-2,600	-30.6%
<b>Services Providing</b>	276,900	279,000	279,700	283,700	296,400								283,100	284,000	-900	-0.3%
Trade/Transportation/Utilities	61,300	60,800	61,000	62,600	67,700								62,700	63,300	-600	-0.9%
Wholesale Trade	5,900	5,900	6,000	5,900	6,100								6,000	6,400	-400	-6.3%
Retail Trade	35,700	35,100	34,900	35,800	37,400								35,800	36,200	-400	-1.1%
Food & Beverage Stores	5,600	5,800	5,700	5,800	6,000								5,800	5,700	100	1.8%
General Merchandise Stores	10,600	10,400	10,400	10,500	10,700								10,500	10,500	0	0.0%
Trans/Warehouse/Utilities	19,700	19,800	20,100	20,900	24,200								20,900	20,700	200	1.0%
Air Transportation	5,700	5,700	5,800	5,900	6,300								5,900	5,900	0	0.0%
Information	6,300	6,300	6,200	6,200	6,100								6,200	6,300	-100	-1.6%
Telecommunications	4,200	4,200	4,200	4,200	4,100								4,200	4,200	0	0.0%
Financial Activities	11,500	11,500	11,500	11,600	11,700								11,600	12,600	-1,000	-7.9%
Professional & Business Svcs	25,700	26,500	26,100	26,400	27,200								26,400	28,200	-1,800	-6.4%
Educational & Health Services	48,600	49,200	49,100	49,700	49,700								49,300	47,400	1,900	4.0%
Health Care	35,400	35,700	35,800	36,000	36,000								35,800	35,200	600	1.7%
Leisure & Hospitality	31,300	31,100	31,600	32,400	38,300								32,900	32,200	700	2.2%
Accommodation	6,800	6,800	7,000	7,400	10,800								7,800	7,100	700	9.9%
Food Svcs & Drinking Places	20,400	20,000	20,200	20,500	21,800								20,600	20,600	0	0.0%
Other Services	11,700	11,600	11,800	11,800	12,000								11,800	11,100	700	6.3%
<b>Government</b>	80,500	82,000	82,400	83,000	83,700								82,300	82,400	-100	-0.1%
Federal Government	14,500	14,600	14,900	14,900	15,700								14,900	14,900	0	0.0%
State Government	23,800	24,300	24,400	24,600	24,400								24,300	25,300	-1,000	-4.0%
State Education	7,200	7,700	7,600	7,700	7,300								7,500	7,900	-400	-5.1%
Local Government	42,200	43,100	43,100	43,500	43,600								43,100	42,300	800	1.9%
Local Education	23,800	24,700	24,700	24,900	24,400								24,500	24,300	200	0.8%
Tribal Government <sup>1</sup>	3,800	3,900	4,000	3,900	4,100								3,900	3,700	200	5.4%

The Current Employment Statistics (CES) survey, is based on a survey of approximately 146,000 businesses and government agencies representing approximately 623,000 worksites throughout the United States. The primary statistics derived from the survey are monthly estimates of employment, hours, and earnings for the Nation, States, and major metropolitan areas. Estimates for the current year may be subject to large revisions that will be published early in the following year. CES data in the current year is presented as compared to CES data from the same months in the previous year.

county, MSA, state and national levels by industry. This data is considered to be the more definitive analysis of employment figures and trends. QCEW data in the current year is presented as compared to QCEW data from the same months in the previous year.

- Nonfarm Wage & Salary excludes self-employed workers, fishers, domestics, and unpaid family workers.

- All totals are non-seasonally adjusted totals.

- Government includes employees of public school systems and the University of Alaska.

- Totals may not equal sub-sections due to rounding.

- Source: Alaska Department of Labor and Workforce Development, Research and Analysis Section

### Quick Comparisons

16 vs 17 March	-6,100	-1.8%
17 vs 16 1st Qtr	-6,900	-2.1%
17 vs 16 2nd Qtr	-7,100	-2.2%
3rd Qtr.		
17 vs 16 4th Qtr		

Heidi Drygas  
Commissioner

[www.labor.alaska.gov](http://www.labor.alaska.gov)



P.O. Box 111149  
Juneau, AK 99811-1149  
907.465.2700  
[commissioner.labor@alaska.gov](mailto:commissioner.labor@alaska.gov)

## Press Release

COMMISSIONER'S OFFICE

FOR IMMEDIATE RELEASE  
June 16, 2017

No. 17-30

For more information: Neal Fried, Economist  
907-269-4861, [Neal.Fried@Alaska.Gov](mailto:Neal.Fried@Alaska.Gov)

### Unemployment Rate at 6.7 Percent in May

JUNEAU, Alaska—Alaska's seasonally adjusted unemployment rate was 6.7 percent in May, essentially unchanged from April's 6.6 percent. The comparable national rate was 4.3 percent. The gap between the national rate and the Alaska rate has steadily increased over the last several years.

Preliminary employment estimates show May was down by 6,000 jobs, or 1.8 percent, from May 2016. Oil and gas continued to show the largest over-the-year losses, followed closely by construction, professional and business services, and state government.

Although most sectors lost jobs, health care employment continued to grow as did leisure and hospitality. Local and federal government jobs were also up over the year. Most of the local government growth came from tribal government jobs, which are included in the local government numbers.

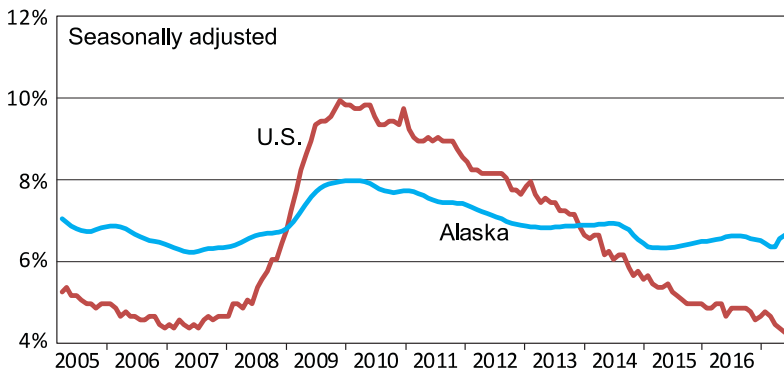
May's not-seasonally adjusted unemployment rate was 6.8 percent, down two-tenths of a percentage point from April. From April to May, it is typical to see a decline in the unadjusted rate as tourism and construction ramp up for summer.

Across the state, unadjusted rates fell or remained the same in 19 of 29 boroughs and census areas. The lowest rates were in Juneau (4.1 percent), Sitka (4.1 percent), and Skagway (4.2 percent) as Southeast prepares for summer visitors. Kusilvak Census Area had the highest rate at 21.1 percent.

###

# Unemployment Rates, Alaska and U.S.

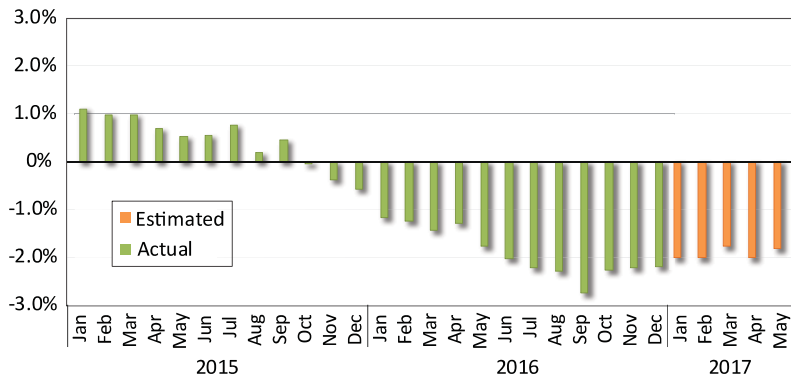
January 2005 to May 2017



Sources: Alaska Department of Labor and Workforce Development, Research and Analysis Section; and U.S. Bureau of Labor Statistics

# Wage and Salary Employment

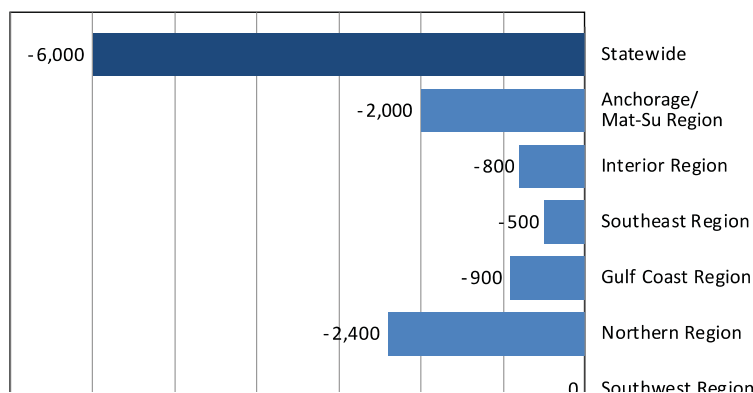
Percent change from same month the previous year



Note: Actual employment counts for 2016 are from the benchmarked Current Employment Statistics and Quarterly Census of Employment and Wages employment series. Estimated employment counts from 2017 are based on a forecast of the QCEW series.

# Regional Employment

Change from May 2016 to May 2017



# Area Unemployment Rates

Not seasonally adjusted<sup>1</sup>

	Rate		
	5/17 <sup>P</sup>	4/17	5/16
<b>Alaska</b>	<b>6.8</b>	<b>7.0</b>	<b>6.6</b>
<b>Anchorage/Mat-Su Region</b>	<b>6.3</b>	<b>6.4</b>	<b>5.9</b>
Anchorage, Municipality	5.8	5.8	5.3
Matanuska-Susitna Borough	8.2	8.7	7.8
<b>Gulf Coast Region</b>	<b>7.0</b>	<b>7.7</b>	<b>7.5</b>
Kenai Peninsula Borough	7.6	8.3	8.0
Kodiak Island Borough	4.6	4.6	4.7
Valdez-Cordova Census Area	6.8	8.4	7.9
<b>Interior Region</b>	<b>6.7</b>	<b>7.1</b>	<b>6.3</b>
Denali Borough	6.2	16.2	5.1
Fairbanks North Star Borough	6.0	6.1	5.5
Southeast Fairbanks Census Area	8.6	9.7	10.0
Yukon-Koyukuk Census Area	17.0	18.1	17.1
<b>Northern Region</b>	<b>12.9</b>	<b>12.4</b>	<b>11.7</b>
Nome Census Area	13.7	13.3	12.9
North Slope Borough	7.5	7.0	6.9
Northwest Arctic Borough	18.9	18.6	16.6
<b>Southeast Region</b>	<b>5.2</b>	<b>5.9</b>	<b>5.6</b>
Haines Borough	7.4	9.2	8.7
Hoonah-Angoon Census Area	9.6	13.4	10.1
Juneau, City and Borough	4.1	4.5	4.1
Ketchikan Gateway Borough	5.7	6.3	5.9
Petersburg Borough	6.7	7.4	8.5
Prince of Wales-Hyder CA	9.0	10.1	11.1
Sitka, City and Borough	4.1	3.9	4.3
Skagway, Municipality	4.2	11.8	4.7
Wrangell, City and Borough	5.9	6.2	6.1
Yakutat, City and Borough	6.5	6.4	6.2
<b>Southwest Region</b>	<b>12.5</b>	<b>10.3</b>	<b>13.3</b>
Aleutians East Borough	4.7	2.3	5.7
Aleutians West Census Area	5.7	3.6	5.8
Bethel Census Area	14.9	13.7	15.4
Bristol Bay Borough	5.2	7.8	6.0
Dillingham Census Area	10.0	9.7	10.7
Kusilvak Census Area	21.1	20.3	22.7
Lake and Peninsula Borough	11.6	13.8	13.3

P = Preliminary. As more information becomes available, data are revised every month for the previous month and again at the end of every calendar year.

Note: The official definition of unemployment excludes anyone who has not made an active attempt to find work in the four-week period up to and including the week that includes the 12th of the reference month.

<sup>1</sup>Unemployment rates that are not seasonally adjusted should not be compared with those that are.

Source: Alaska Department of Labor and Workforce Development, Research and Analysis Section; and U.S. Bureau of Labor Statistics



## Employment By Industry

	Average Monthly Employment			Compared to May 2016	
	May 2017 <sup>1</sup>	April 2017 <sup>1</sup>	May 2016 <sup>2</sup>	Change	Percent
<b>Total Nonfarm Employment</b>	<b>333,000</b>	<b>322,100</b>	<b>339,000</b>	<b>-6,000</b>	<b>-1.8%</b>
<b>Total Private</b>	<b>250,700</b>	<b>239,900</b>	<b>256,000</b>	<b>-5,300</b>	<b>-2.1%</b>
Mining and Logging	13,200	13,200	15,000	-1,800	-12.0%
Oil and Gas	10,200	10,200	11,700	-1,500	-12.8%
Construction	15,800	14,100	17,200	-1,400	-8.1%
Manufacturing	10,600	12,400	10,700	-100	-0.9%
Trade, Transportation, and Utilities	66,500	62,500	67,900	-1,400	-2.1%
Wholesale	6,300	6,200	6,500	-200	-3.1%
Retail	36,900	35,500	37,700	-800	-2.1%
Transportation, Warehousing, and Utilities	23,300	20,800	23,700	-400	-1.7%
Information	6,200	6,300	6,400	-200	-3.1%
Financial Activities	11,900	11,700	12,000	-100	-0.8%
Professional and Business Services	27,900	27,000	29,300	-1,400	-4.8%
Education and Health	49,600	49,500	48,700	900	1.8%
Health Care	36,400	36,300	35,500	900	2.5%
Leisure and Hospitality	38,000	32,400	37,500	500	1.3%
Other Services	11,000	10,800	11,300	-300	-2.7%
<b>Total Government</b>	<b>82,300</b>	<b>82,200</b>	<b>83,000</b>	<b>-700</b>	<b>-0.8%</b>
Federal	15,600	14,900	15,500	100	0.6%
State	23,500	24,200	24,900	-1,400	-5.6%
Local	43,200	43,100	42,600	600	1.4%

<sup>1</sup>Employment estimates for 2017 are based on a forecast of Quarterly Census of Employment and Wages (QCEW) data.

