



Anchorage Employment Report

CO-SPONSORED BY:



TABLE OF CONTENTS

EXECUTIVE SUMMARY	2
GOODS PRODUCING JOBS SUMMARY	3
SERVICES PROVIDING JOBS SUMMARY	4
HEALTH CARE SNAPSHOT	4
PROFESSIONAL & BUSINESS SERVICES SNAPSHOT	5
ANCHORAGE HOUSING	6
ALASKA FORECLOSURES & BANKRUPTCIES.....	7
UNEMPLOYMENT CLAIMS	8
UNEMPLOYMENT ANALYSIS OF SOUTHCENTRAL REGION (TABLE).....	9
LABOR FORCE ANALYSIS CHARTS.....	10
ANCHORAGE EMPLOYMENT ESTIMATES TABLE.....	11
STATE OF ALASKA PRESS RELEASE.....	12

All data referenced in this employment report is from the State of Alaska, Dept. of Labor & Workforce Development website: www.laborstats.alaska.gov and from the U.S. Bureau of Labor Statistics: www.bls.gov.

Report compiled by Anchorage Economic Development Corp. Research Department.

Report generously sponsored by First National Bank Alaska and Alaska Communications.

If you are interested in learning more about this data or are interested in how AEDC can help you develop a report, call AEDC at 907.258.3700.

AEDC, 510 L Street, Suite 603, Anchorage, AK 99501

EXECUTIVE SUMMARY

MONTHLY UNEMPLOYMENT

The not seasonally adjusted preliminary unemployment rate for Anchorage in September was 5.8 percent, up 0.3 percent compared to the August revised rate. **This is 1.7 percent above the national not seasonally adjusted rate of 4.1 percent and 0.8 percent below the statewide not seasonally adjusted rate of 6.6 percent.** The September unemployment rate for Anchorage was 0.6 percent higher than it was in September 2016. As always, it should be noted that these are preliminary survey figures for September and will be revised next month.

YEAR-TO-DATE UNEMPLOYMENT

The Anchorage 2017 average year-to-date (YTD) not seasonally adjusted unemployment rate remains at 5.7 percent at the end of September, 0.4 percent higher than at this time last year. An increase of 1,579 in the employment total and an increase of 2,476 in the Anchorage labor force during the YTD period has resulted in the reported unemployment total increasing by 758. The total number of unemployed people in Anchorage for the month of September is estimated at 9,091 (those actively looking for jobs), 1,047 more than September 2016.

In the Mat-Su Borough, the September unemployment rate of 7.9 percent is up 0.6 percent from September 2016 while the Kenai Peninsula's unemployment rate of 7.4 has increased by 0.2 percent compared to September 2016 (see the charts on pages 9-10 for more details).

It is important to note that the Anchorage unemployment numbers represent the labor force residing in Anchorage, and do not describe the number of filled positions in Anchorage. The industry employment estimates referenced in the remainder of this report are representative of the number of jobs in the Municipality of Anchorage, regardless of the job holder's place of residency.

ANCHORAGE INDUSTRY EMPLOYMENT ESTIMATES | YEAR-TO-DATE

As for Anchorage industry employment estimates, which includes total jobs in Anchorage held by city residents and commuters, the YTD average through September for 2017 shows a loss of 2,900 jobs (-1.9 percent) so far compared to the same period in 2016. The private sector (total jobs minus government jobs) at 123,500 jobs shrunk by 2,600 (-1.3 percent) jobs during this time, while Government employment at 28,700 jobs has decreased by 200 (-0.7 percent). Federal jobs decreased by 100 (-1.2 percent). State government jobs have decreased by 300 (-2.9 percent) and Local Government jobs have increased by 200 (+2.0 percent). Please note that these figures will likely be revised as more data is received and additional analysis is conducted.

The Goods Producing category lost 1,000 jobs YTD (-7.8 percent). The Mining & Logging industry (which includes Oil & Gas employment) continues to decline locally and is showing 500 fewer jobs (-16.1 percent). Construction is down 300 jobs YTD (-3.9 percent), while Manufacturing at 2,000 YTD decreased by 100 (-4.8 percent) compared to 2016.

Services Providing industries have lost 1,800 jobs YTD (-1.3 percent). Categories showing increases include Health Care up 600 jobs (+3.0 percent). Services Providing industries showing losses so far in 2017 include Retail down 500 jobs (-2.8 percent), Information down 300 jobs (-7.5 percent), Professional & Business Services down 800 jobs (-4.2 percent), Leisure & Hospitality (Tourism) down 200 (-1.1 percent), and Financial Services are currently down 100 jobs (-1.3 percent).

5.8%

September 2017
Unemployment Rate
for Anchorage (preliminary)

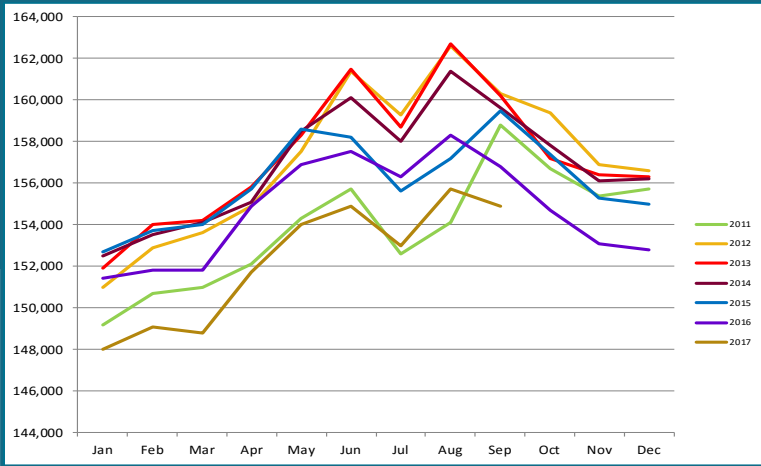
5.7%

2017 YTD
Unemployment Rate
for Anchorage (preliminary)

154,900

Total jobs in Anchorage
September 2017 (preliminary)

ANCHORAGE EMPLOYMENT
Municipality of Anchorage 2011-Present



GOODS PRODUCING JOBS

CONSTRUCTION WORK, MINING, OIL & GAS PRODUCTION, MANUFACTURING

Please note that the rest of the job numbers are comparing August 2017 to August 2016 and are not YTD aggregate numbers like the previous section unless noted. This is to more accurately show Anchorage's job market as it currently stands.

Losses in the number of Goods Producing jobs in Anchorage are no longer leading the overall downward trend 2017 YTD. There is a marked narrowing of losses in several industry sectors within this broad category of jobs. For September 2017 goods producing job losses continued to narrow significantly

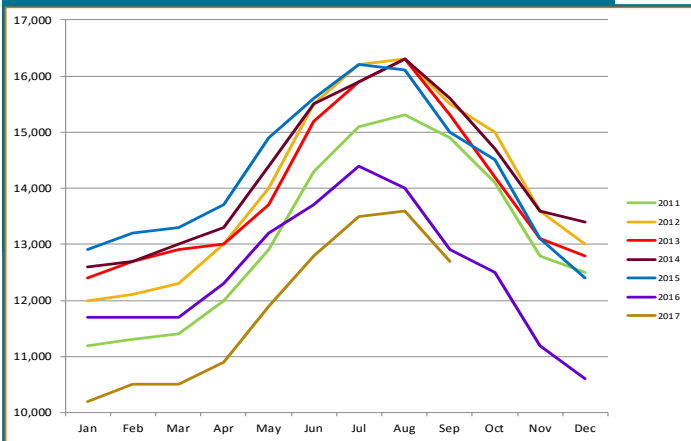
and the outlook for the remainder of 2017 is for job losses in this category to continue to narrow even more.

The September total of 12,700 is -200 (-1.6 percent) fewer jobs than in September 2016. A decrease of 200 (-7.1 percent) jobs in the Mining & Logging industry, which includes Oil & Gas employment. Manufacturing was flat at 1,900 jobs. Total Anchorage Goods Producing September employment is now tracking just below 2016 employment levels.

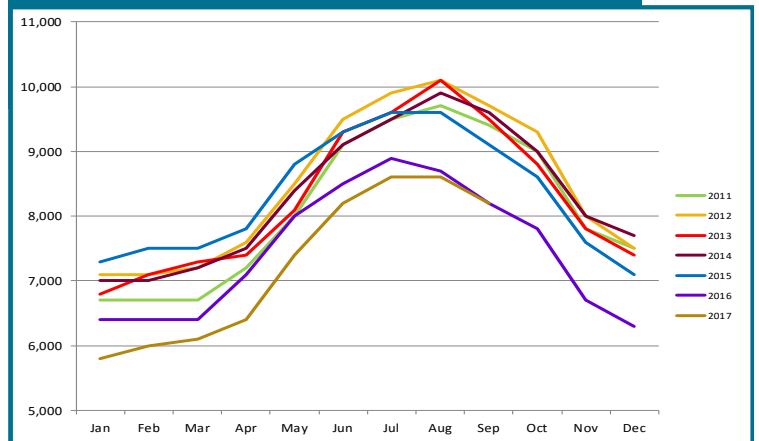
The Oil & Gas sector September job total shows 200 (-7.1 percent) fewer jobs compared to September 2016, clearly indicating year over year losses seem to be slowing. Statewide, oil & gas industry September employment is down 700 jobs (-6.7 percent) compared to September 2016. The recent oil market recoveries in the upper \$50 per barrel range in both domestic and international oil prices are a possible sign of hope for industry job growth in the coming year if recent price increases can be sustained. However, the lack of certainty from the State of Alaska for tax and fiscal policy is the greatest barrier to new oil industry investment and the jobs that would accompany new investment.

September Construction employment is flat at 8,200 jobs. Anchorage building permit application values, a measure of interest in construction, have slowed in recent weeks totaling \$370.4 million through the October 13, 2017 reporting period, 4.2 percent lower than the \$366.8 million at this point last year. Projects submitted for permits are a relatively healthy mix of private sector and government projects.

GOODS PRODUCING JOBS
Municipality of Anchorage 2011-Present



CONSTRUCTION EMPLOYMENT
Municipality of Anchorage 2011-Present



In Anchorage:

12,700

GOODS PRODUCING JOBS

September 2017 (preliminary)



8,200

CONSTRUCTION JOBS

September 2017 (preliminary)



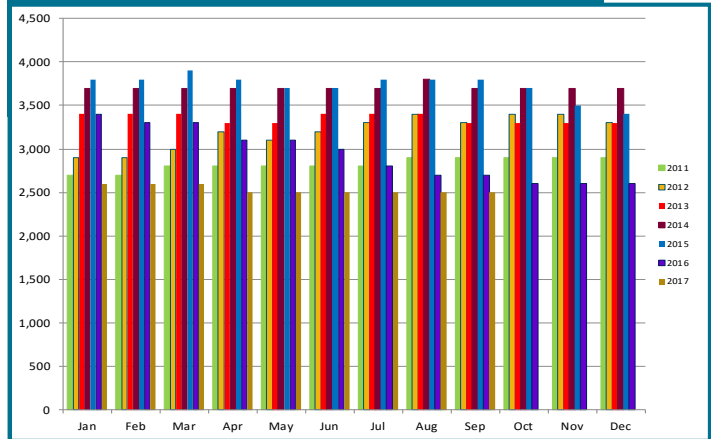
2,500

OIL & GAS JOBS

September 2017 (preliminary)

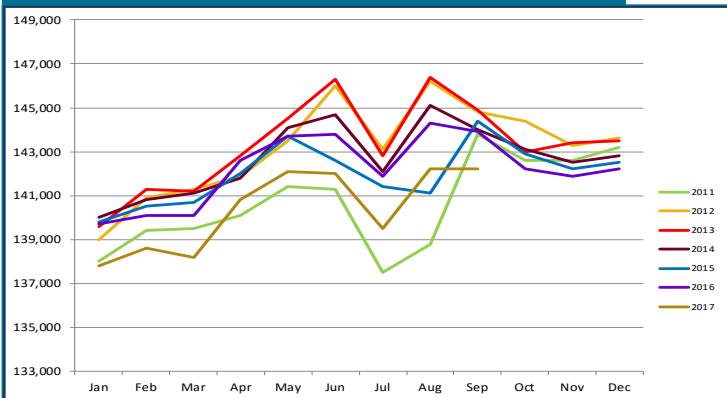
OIL & GAS EMPLOYMENT

Municipality of Anchorage 2011-Present



SERVICES PROVIDING JOBS

Municipality of Anchorage 2011-Present



SERVICES PROVIDING JOBS

ENGINEERING, RETAIL, TOURISM, HEALTH CARE, ETC.

Losses in the number of Services Providing jobs in Anchorage are now leading the overall downward trend 2017 YTD. There is a modest slowing of total losses in September, though still pronounced in several industry sectors within this broad category of jobs. For September 2017 total services providing jobs stood at 142,200, down 1,700 (-1.2 percent) for the month compared to the same month in 2016. The outlook for the remainder of 2017 is for job losses in this category to continue to lead total job losses in Anchorage for the year.

There has been a delayed ripple effect caused by the losses previously seen in the Goods Producing category in high wage sectors like oil and gas and construction in the previous year. Lower levels of consumer spending that resulted from those earlier job losses are now being felt in sectors like retail, accommodations and the food services sectors.

HEALTH CARE EMPLOYMENT

Employment in the Health Care sector shows continued growth, with 600 (+3.0 percent) more jobs in September over September 2016. As noted in AEDC's 2017 Economic Forecast report, this sector will be one of the bright points in an uncertain year for job growth.

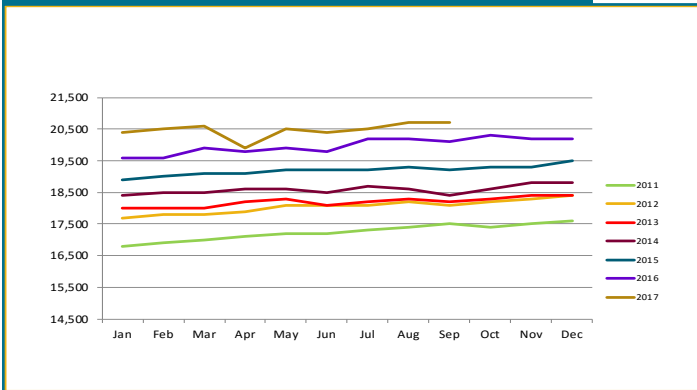
TRANSPORTATION

The September employment in these sectors are down 600 (-1.8 percent) jobs this year. The Retail Trade sector, a subset of the TTU industry, is down 600 (-3.2 percent) jobs in September compared to September 2016 YTD, while wholesale trade was flat for the month.

September job estimates in the Transportation/Warehouse/Utilities sector (a sub-group of the Trade/Transportation/Utilities industry) were up 100 (+0.9 percent). The continuing strength in the air cargo industry at Ted Stevens International Airport, combined with a strong visitor season in 2017, underscores that this sector will continue to be a steady component of the Anchorage economy.

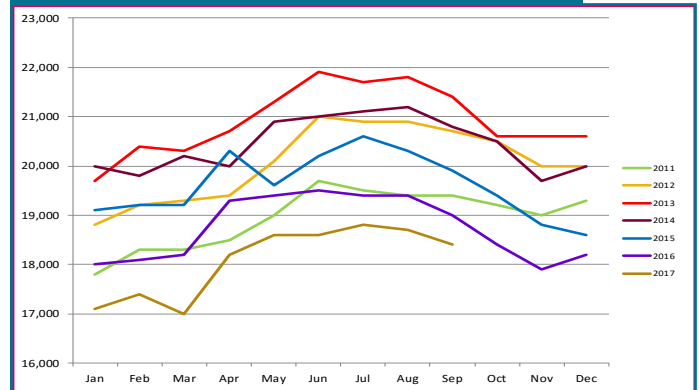
HEALTH CARE EMPLOYMENT

Municipality of Anchorage 2011-Present



PROFESSIONAL & BUSINESS SERVICES

Municipality of Anchorage 2011-Present



PROFESSIONAL & BUSINESS SERVICES

CONSULTING, ENGINEERING, ARCHITECTURE, LEGAL SERVICES, ACCOUNTING, SCIENTIFIC RESEARCH, WASTE MANAGEMENT & ADMINISTRATIVE SERVICES.

This category includes consulting, engineering, architecture, legal services, accounting, scientific research, waste management & administrative services.

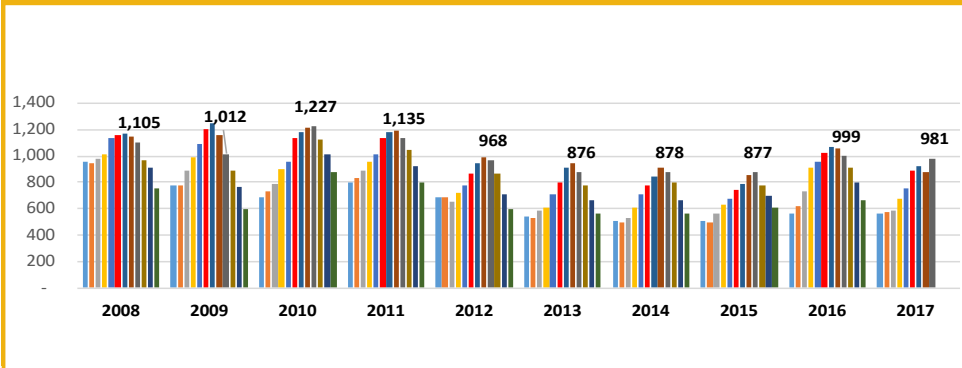
Professional and business services dropped 600 (-3.2 percent) jobs in September compared to the same month in 2016. While these losses are significant, this sector is seeing a declining trend of job losses in recent months. It is likely the rate of job losses in this sector will continue to moderate in the coming months.

GOVERNMENT

Government jobs for September in Anchorage are down 300 jobs compared to September 2016 due to losses in the State Government sector averaging 200 (-1.9 percent) fewer jobs than at this point last year. Local Government positions have increased by 100. Federal Government are down 100 (-1.1 percent).

ANCHORAGE HOUSING

ANCHORAGE SINGLE FAMILY HOME LISTINGS YTD Total, 10-Year Comparison



Source: Anchorage MLS

SINGLE FAMILY HOME LISTINGS

September data from Anchorage Multiple Listing Service shows that inventories of homes for sale, at 981 in Anchorage, were down 2 percent compared to September of last year, the sixth highest inventory level for this month in the last 10 years. The Anchorage housing market inventory remains a relatively balanced market of buying and selling opportunities for home sellers and home buyers.

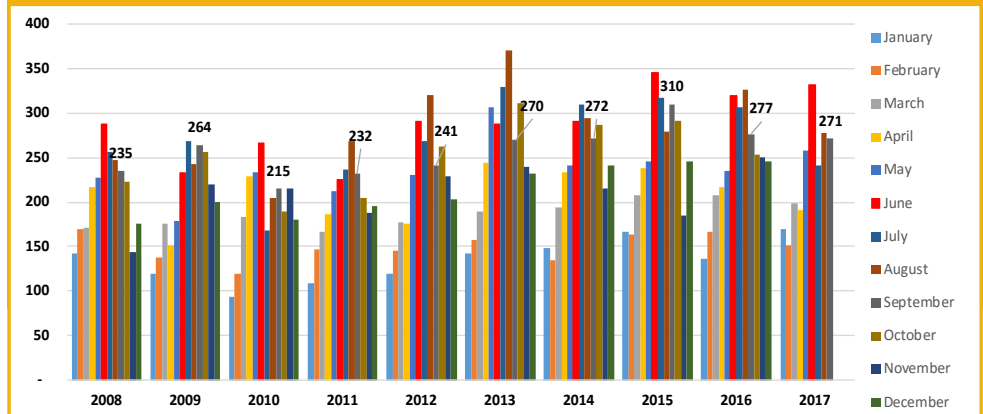


271
Single family home unit sales, September 2017

SINGLE FAMILY HOME MONTHLY UNIT SALES

Anchorage monthly sales of single family homes in September were the fourth-best for the month in the last 10 years. Two hundred seventy-one units were sold, a 2 percent decrease compared to September 2016.

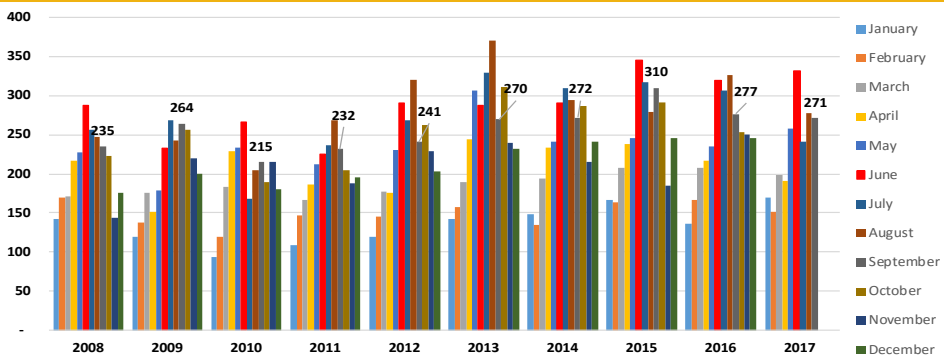
ANCHORAGE SINGLE FAMILY HOME MONTHLY UNIT SALES YTD, 10-Year Comparison as of 9/31/17



Source: Anchorage MLS

ANCHORAGE SINGLE FAMILY TOTAL UNIT SALES

YTD Total, 10-Year Comparison as of 9/31/17



Source: Anchorage MLS

SINGLE FAMILY HOME YTD TOTAL UNIT SALES

YTD sales for the first nine months of 2017 are slightly below the same period in 2016 with 2,090 units sold so far in 2017, down 4.6 percent compared to the same period last year. 2017 sales are tracking as the fifth best year for total sales in the last decade.



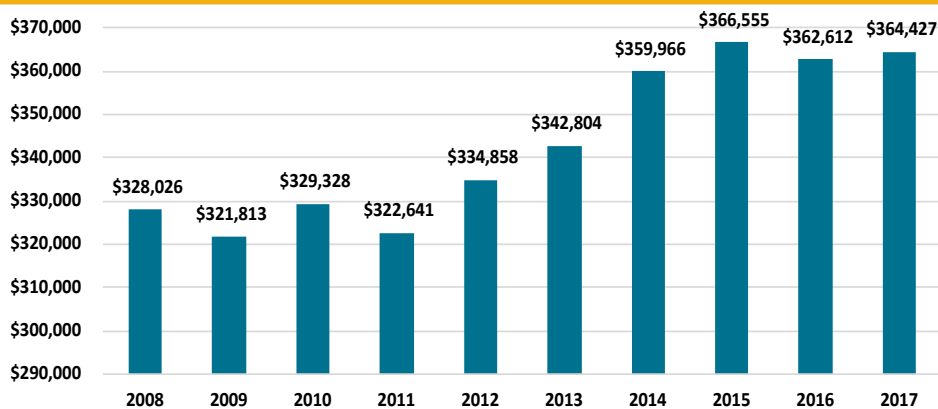
\$364,427
Average home sale price in Anchorage, 2017 YTD

SINGLE FAMILY HOME AVERAGE SALES PRICE

The average price for a home sold in Anchorage YTD through the end of September stood at \$364,427, up \$1,815 compared to the same period in 2016. While average sales prices can vary widely from month to month, the annual average is another good measure of market health. At 0.5 percent higher than at this point last year, this price is second highest for the 10-year average for this nine-month period.

ANCHORAGE SINGLE FAMILY HOME AVG. SALES PRICE

YTD, 10-Year Comparison as of 9/31/17



Source: Anchorage MLS

ALASKA FORECLOSURES

Alaska continues to show solid indicators in this category. Out of the 50 states and District of Columbia, Alaska remains in a five-way tie for 48th place at 0.3 percent of all active mortgages in foreclosure for the 12 months ending July, 2017. The national average was 0.7 percent. Another positive indicator is Alaska's serious delinquency rate, at 1.2 percent of all mortgages statewide, well below the national average of 1.8 percent. Current foreclosure and serious delinquency data shows that the Alaska housing market remains solidly healthy as of this report.

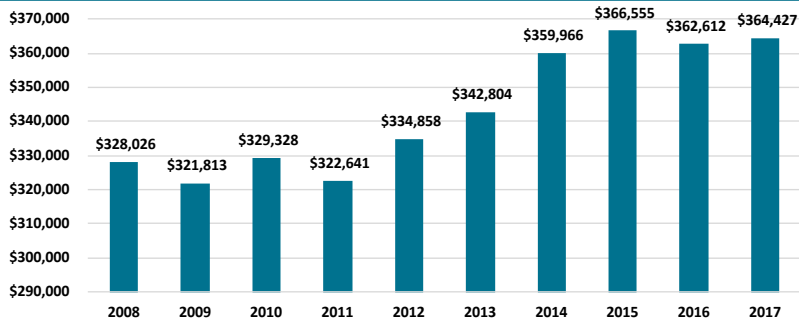
Source: CoreLogic

ALASKA BANKRUPTCIES

According to recently released data from the American Bankruptcy Institute, Alaska bankruptcies remain at near record lows. For the nine months ending September 30, Alaska ranked 51st out of the 50 states and District of Columbia with a per capita rate of 0.66 bankruptcies per 1,000 Alaskans. This compares to the national per capita rate of 2.55 bankruptcies per 1,000 Americans. The total number of bankruptcies in Alaska YTD, at 334, are up by 15 percent compared to the same timeframe in 2016. As measured by this metric, the overall financial health of Alaska's citizens and businesses continues to demonstrate results that are much better than might be expected.

ANNUAL BANKRUPTCY FILINGS

As of 9/31/17

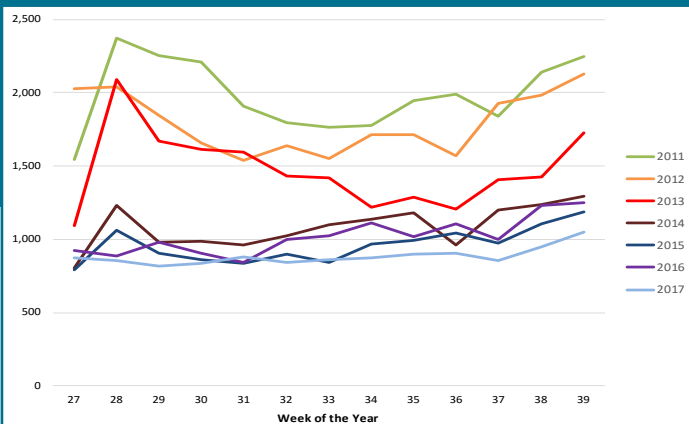


Source: American Bankruptcy Institute

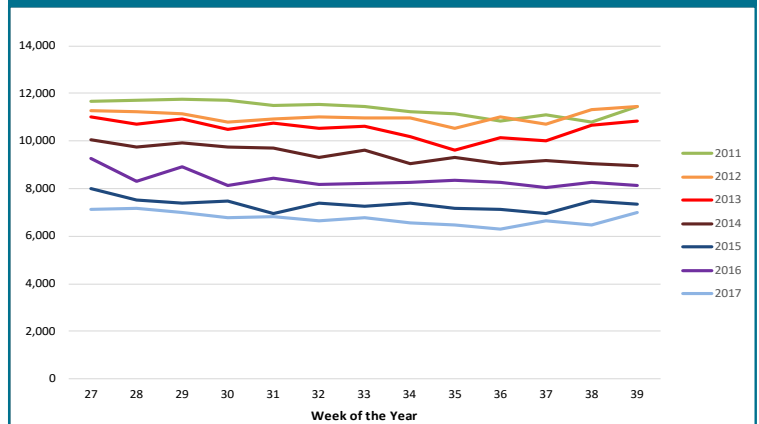
UNEMPLOYMENT CLAIMS

Initial unemployment claim applications can be interpreted as a proxy for layoffs. They tend to fall as job growth accelerates. The trend in weekly totals in 2017 continue to track at record lows below 2015 and 2016 levels, well under recent historic highs seen in 2011. This continuing low range for initial unemployment claims are likely a result of mitigating factors such as older workers retiring in the face of the recession, job losses impacting non-resident workers and laid off workers leaving Alaska for better job opportunities in the Lower 48 states. In all cases, these are workers not applying for unemployment benefits in Anchorage or Alaska, thereby keeping the unemployment rate lower than might be expected.

INITIAL UNEMPLOYMENT CLAIMS IN ALASKA, Q3



CONTINUING UNEMPLOYMENT CLAIMS IN ALASKA, Q3



Continuing claims figures help to show how well unemployed workers are re-entering the workforce. This total does not include workers receiving extended benefits from the federal government. The 2017 weekly numbers in this category continue to track at record lows slightly below 2015 for the same time period, well below recent historic highs reported in 2011. This is another indicator of some continuing strength to be found in the Alaska economy. Declining job availability in the future may negatively affect the ability to find jobs for those workers included in this metric. Current trends do not support the likelihood of this trend developing. However, if this trend should develop it will result in an increase in the numbers of workers receiving unemployment benefits in the long term, though how significant that increase might be is highly speculative.

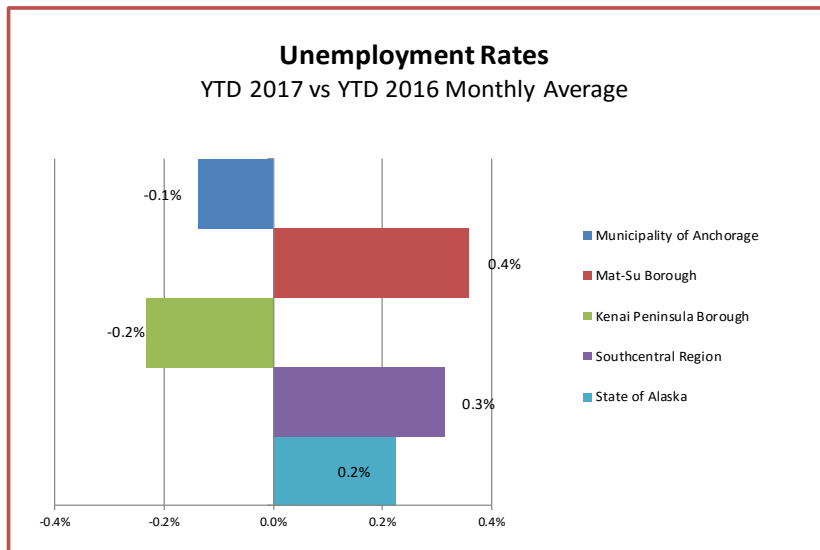
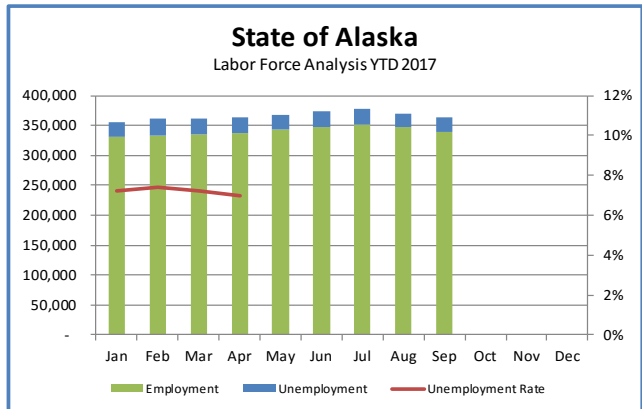
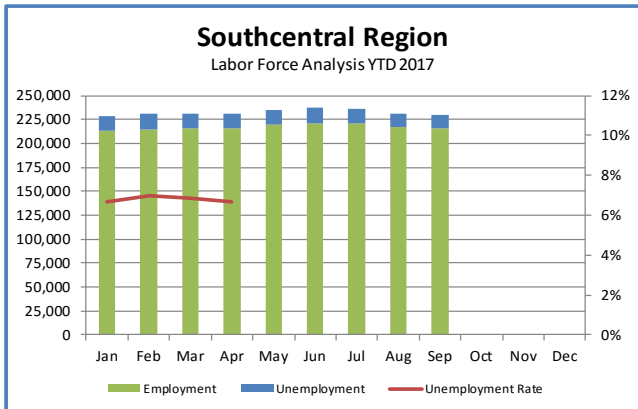
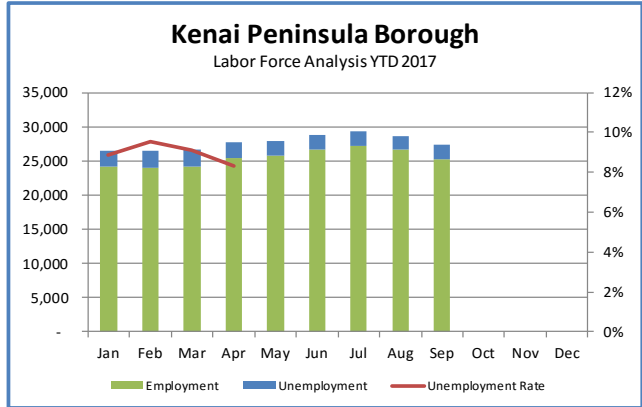
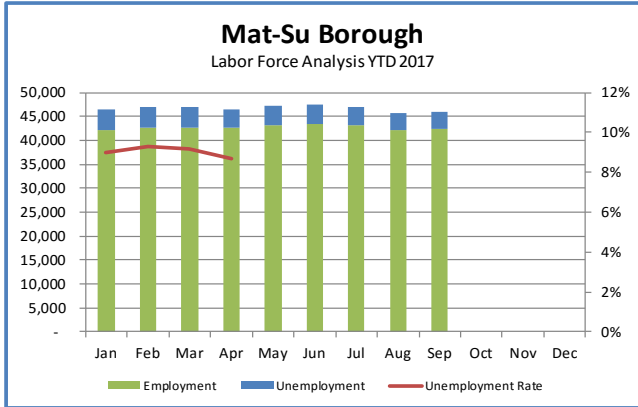
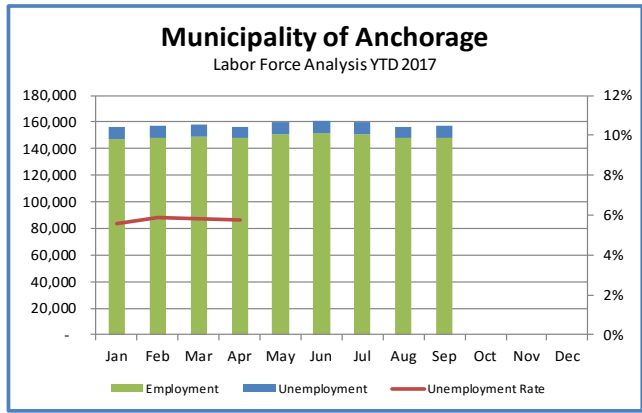
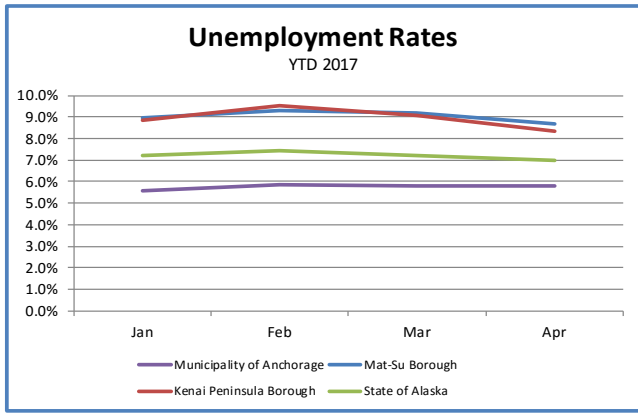
UNEMPLOYMENT ANALYSIS (YTD, 2017)

Anchorage, Mat-Su, Kenai Peninsula Borough

	Jan	Feb	Mar	Apr	May	Jun	Jul	Aug	Sep	Oct	Nov	Dec	17 YTD Avg	16 YTD Avg	17 vs 16 (YTD)
	Revised	Revised	Revised	Revised	Revised	Revised	Revised	Revised	Preliminary						
Municipality of Anchorage															
Labor Force	156,099	157,462	157,949	156,645	160,015	160,771	159,784	156,240	156,870				158,121	155,645	2,476
Employment	147,369	148,247	148,799	147,597	150,903	151,270	150,759	147,644	147,779				148,930	147,351	1,579
Unemployment	8,730	9,215	9,150	9,048	9,112	9,501	9,025	8,596	9,091				9,052	8,294	758
Unemployment Rate	5.6%	5.9%	5.8%	5.8%	5.7%	5.9%	5.6%	5.5%	5.8%				5.7%	5.3%	0.4%
Mat-Su Borough															
Labor Force	46,387	46,883	46,937	46,554	47,114	47,394	46,983	45,807	45,911				46,663	45,961	702
Employment	42,223	42,530	42,625	42,518	43,254	43,328	43,167	42,249	42,303				42,689	42,210	478
Unemployment	4,164	4,353	4,312	4,036	3,860	4,066	3,816	3,558	3,608				3,975	3,751	224
Unemployment Rate	9.0%	9.3%	9.2%	8.7%	8.2%	8.6%	8.1%	7.8%	7.9%				8.5%	8.2%	0.4%
Kenai Peninsula Borough															
Labor Force	26,481	26,487	26,670	27,629	27,924	28,856	29,283	28,633	27,278				27,693	27,388	305
Employment	24,134	23,965	24,249	25,334	25,767	26,685	27,229	26,689	25,260				25,479	25,135	344
Unemployment	2,347	2,522	2,421	2,297	2,157	2,171	2,054	1,944	2,018				2,215	2,254	(39)
Unemployment Rate	8.9%	9.5%	9.1%	8.3%	7.7%	7.5%	7.0%	6.8%	7.4%				8.0%	8.2%	-0.2%
Southcentral Region															
Labor Force	228,967	230,832	231,556	230,828	235,053	237,021	236,050	230,680	230,059				232,338	228,994	3,344
Employment	213,726	214,742	215,673	215,447	219,924	221,283	221,155	216,582	215,342				217,097	214,695	2,402
Unemployment	15,241	16,090	15,883	15,381	15,129	15,738	14,895	14,098	14,717				15,241	14,299	942
Unemployment Rate	6.7%	7.0%	6.9%	6.7%	6.4%	6.6%	6.3%	6.1%	6.4%				6.6%	6.2%	0.3%
State of Alaska															
Labor Force	356,084	360,469	362,177	363,136	367,677	374,057	376,851	369,931	362,917				365,922	361,674	4,248
Employment	330,459	333,699	336,036	337,759	342,683	347,957	352,142	346,523	338,980				340,693	337,550	3,143
Unemployment	25,625	26,770	26,141	25,377	24,994	26,100	24,709	23,408	23,937				25,229	24,124	1,105
Unemployment Rate	7.2%	7.4%	7.2%	7.0%	6.8%	7.0%	6.6%	6.3%	6.6%				6.9%	6.7%	0.2%

*Note: These numbers reflect employment, unemployment, etc. for only those people that are residence of the specified City/Region, thus are not inclusive of people who commute to another city for their jobs.

(Ex: Someone lives in Wasilla but works in Anchorage. They would be counted in the Mat-Su Borough's labor force and employment numbers, not the Municipality of Anchorage numbers)



INDUSTRY EMPLOYMENT ESTIMATES 2017

Municipality of Anchorage

Federal Data Series	QCEW		QCEW		QCEW		CES		CES		CES		CES		CES		2017 YTD Avg.		2016 YTD Avg.		2017 vs 2016 YTD Change		% Change		
	Actual	Jan	Feb	Mar	Actual	Revised	Apr	Revised	May	Revised	Jun	Revised	Jul	Revised	Aug	Revised	Sep Preliminary	Oct	Nov	Dec					
% Change from same month year ago	-2.2%	-1.8%	-1.8%	-2.0%	-2.1%	-1.8%	-1.7%	-1.7%	-2.1%	-2.1%	-1.6%	-1.2%	-1.2%	-100.0%	-100.0%	-100.0%									
Total Nonfarm	148,000	149,100	148,800	151,700	154,000	154,900	153,000	153,000	153,000	154,900	154,900	154,900	154,900	154,900	154,900	154,900	154,900	154,900	154,900	154,900	154,900	154,900	154,900	154,900	154,900
Goods Producing	10,200	10,500	10,500	10,900	11,900	12,800	13,500	13,500	13,500	13,600	12,700	12,700	12,700	12,700	12,700	12,700	12,700	12,700	12,700	12,700	12,700	12,700	12,700	12,700	12,700
Mining and Logging ²	2,700	2,700	2,700	2,700	2,600	2,600	2,600	2,600	2,600	2,600	2,600	2,600	2,600	2,600	2,600	2,600	2,600	2,600	2,600	2,600	2,600	2,600	2,600	2,600	2,600
Oil & Gas	2,600	2,600	2,600	2,500	2,500	2,500	2,500	2,500	2,500	2,500	2,500	2,500	2,500	2,500	2,500	2,500	2,500	2,500	2,500	2,500	2,500	2,500	2,500	2,500	2,500
Construction	5,800	6,000	6,100	6,400	7,400	8,200	8,600	8,600	8,600	8,600	8,200	8,200	8,200	8,200	8,200	8,200	8,200	8,200	8,200	8,200	8,200	8,200	8,200	8,200	8,200
Manufacturing	1,700	1,700	1,700	1,900	1,900	2,100	2,400	2,400	2,400	2,300	1,900	1,900	1,900	1,900	1,900	1,900	1,900	1,900	1,900	1,900	1,900	1,900	1,900	1,900	1,900
Services Providing	137,800	138,600	138,200	140,800	142,100	142,000	139,500	142,200	142,200	142,200	142,200	142,200	142,200	142,200	142,200	142,200	142,200	142,200	142,200	142,200	142,200	142,200	142,200	142,200	142,200
Trade/Transportation/Utilities	32,200	32,100	32,000	32,200	33,200	33,500	33,800	33,500	33,200	33,500	33,500	33,500	33,500	33,500	33,500	33,500	33,500	33,500	33,500	33,500	33,500	33,500	33,500	33,500	33,500
Wholesale Trade	4,500	4,600	4,600	4,700	4,800	4,800	4,800	4,800	4,800	4,800	4,800	4,800	4,800	4,800	4,800	4,800	4,800	4,800	4,800	4,800	4,800	4,800	4,800	4,800	4,800
Retail Trade	17,400	17,100	17,000	17,000	17,200	17,400	17,500	17,400	17,200	17,400	17,400	17,500	17,300	17,300	17,300	17,300	17,300	17,300	17,300	17,300	17,300	17,300	17,300	17,300	17,300
Trans/Warehouse/Utilities	10,500	10,400	10,400	10,600	11,200	11,400	11,400	11,400	11,200	11,400	11,400	11,400	11,400	11,400	11,400	11,400	11,400	11,400	11,400	11,400	11,400	11,400	11,400	11,400	11,400
Information	3,900	2,800	3,800	3,900	3,900	3,900	3,900	3,900	3,900	3,900	3,900	3,900	3,900	3,900	3,900	3,900	3,900	3,900	3,900	3,900	3,900	3,900	3,900	3,900	3,900
Financial Activities	7,600	7,700	7,700	7,700	7,400	7,500	7,500	7,500	7,500	7,500	7,500	7,500	7,500	7,500	7,500	7,500	7,500	7,500	7,500	7,500	7,500	7,500	7,500	7,500	7,500
Professional & Business Svcs	17,100	17,400	17,000	18,200	18,600	18,600	18,800	18,600	18,200	18,600	18,700	18,400	18,400	18,400	18,400	18,400	18,400	18,400	18,400	18,400	18,400	18,400	18,400	18,400	18,400
Educational & Health Services	25,400	25,600	25,700	26,900	26,800	26,400	26,400	26,400	26,800	26,400	26,400	26,500	26,500	26,500	26,500	26,500	26,500	26,500	26,500	26,500	26,500	26,500	26,500	26,500	26,500
Health Care	20,400	20,500	20,500	19,900	20,500	20,400	20,500	20,400	20,500	20,500	20,700	20,700	20,700	20,700	20,700	20,700	20,700	20,700	20,700	20,700	20,700	20,700	20,700	20,700	20,700
Leisure & Hospitality	16,500	16,600	16,800	16,900	17,000	17,800	18,000	18,000	17,800	18,000	18,200	17,800	17,800	17,800	17,800	17,800	17,800	17,800	17,800	17,800	17,800	17,800	17,800	17,800	17,800
Accommodation	3,100	3,200	3,200	3,200	3,100	3,400	3,500	3,400	3,100	3,400	3,500	3,500	3,500	3,500	3,500	3,500	3,500	3,500	3,500	3,500	3,500	3,500	3,500	3,500	3,500
Food Svcs & Drinking Places	11,000	11,000	11,100	11,600	11,500	11,700	11,800	11,700	11,500	11,700	12,200	12,100	12,100	12,100	12,100	12,100	12,100	12,100	12,100	12,100	12,100	12,100	12,100	12,100	12,100
Other Services	5,500	5,500	5,600	5,700	5,700	5,700	5,700	5,700	5,700	5,700	5,700	5,600	5,600	5,600	5,600	5,600	5,600	5,600	5,600	5,600	5,600	5,600	5,600	5,600	5,600
Government	29,100	29,500	29,200	29,600	29,600	29,600	29,600	29,600	29,600	29,600	29,900	29,900	29,900	29,900	29,900	29,900	29,900	29,900	29,900	29,900	29,900	29,900	29,900	29,900	29,900
Federal Government	8,400	8,400	8,400	8,400	8,500	8,600	8,600	8,600	8,500	8,600	8,600	8,500	8,500	8,500	8,500	8,500	8,500	8,500	8,500	8,500	8,500	8,500	8,500	8,500	8,500
State Government	9,800	10,100	10,100	10,200	10,100	9,600	9,400	9,500	10,100	10,100	9,500	10,100	10,100	10,100	10,100	10,100	10,100	10,100	10,100	10,100	10,100	10,100	10,100	10,100	10,100
State Education	2,500	2,700	2,700	2,700	2,600	2,000	1,800	2,000	2,600	2,000	1,800	2,500	2,500	2,500	2,500	2,500	2,500	2,500	2,500	2,500	2,500	2,500	2,500	2,500	2,500
Local Government	10,900	11,000	10,700	11,000	11,000	10,400	7,500	9,900	10,300	10,500	10,500	10,500	10,500	10,500	10,500	10,500	10,500	10,500	10,500	10,500	10,500	10,500	10,500	10,500	10,500
Local Education	8,000	8,000	8,000	8,100	8,100	7,500	4,500	7,000	7,000	7,500	7,500	7,500	7,500	7,500	7,500	7,500	7,500	7,500	7,500	7,500	7,500	7,500	7,500	7,500	7,500

The Current Employment Statistics (CES) survey, is based on a survey of approximately 146,000 businesses and government agencies representing approximately 623,000 workites throughout the United States. The primary statistics derived from the survey are monthly estimates of employment, hours, and earnings for the Nation, States, and major metropolitan areas. Estimates for the current year may be subject to large revisions that will be published early in the following year. CES data in the current year is presented as compared to CES data from the same months in the previous year.

The Quarterly Census of Employment and Wages (QCEW) program publishes a quarterly count of employment and wages reported by employers covering 98 percent of U.S. jobs, available at the county, MSA, state and national levels by industry. This data is considered to be the more definitive analysis of employment figures and trends. QCEW data in the current year is presented as compared to QCEW data from the same months in the previous year.

- Nonfarm Wage & Salary excludes self-employed workers, fishers, domestics, and unpaid family workers.
- All totals are seasonally non-adjusted totals.
- Government includes employees of public school systems and the University of Alaska.

- Source: Alaska Department of Labor and Workforce Development, Research and Analysis Section

* Note: The above numbers are representative of all people employed in the Municipality of Anchorage, this is inclusive of workers who claim residence outside of the Municipality of Anchorage. (Ex: someone who lives in the Mat-Su, but works in Anchorage would be included in these number)

Quick Comparisons

17 vs 16 September	-1,900	-1.2%
17 vs 16 1st Qtr	-3,000	-2.0%
17 vs 16 2nd Qtr	-2,900	-1.9%
17 vs 16 3rd Qtr	-2,600	-1.7%
17 vs 16 4th Qtr		

State of Alaska

Department of Labor & Workforce Development



Heidi Drygas
Commissioner

Heather Beaty
Communications
Director

907.269.3569
heather.beaty@alaska.gov

FOR IMMEDIATE RELEASE

No. 17-38

October 20, 2017

Note corrected year in the end of the first paragraph.

For more information: Neal Fried, Economist
907-269-4861, Neal.Fried@Alaska.Gov

CORRECTION: Employment Down 1.3 Percent, Unemployment Rate Unchanged

JUNEAU, Alaska—Alaska's total employment was down by an estimated 1.3 percent in September compared to September 2016, a loss of about 4,600 jobs. Over-the-year job losses have gradually gotten smaller in 2017, however. The largest losses during the current downturn were in the fall of 2016 at -2.6 percent.

Oil and gas employment and construction were both down 6.7 percent. The only industries to add jobs were health care (1.4 percent), leisure and hospitality (0.3 percent), and local government (0.2 percent). Federal employment was flat, and other industries showed mostly modest losses.

Alaska's seasonally adjusted unemployment rate of 7.2 percent in September was unchanged from the prior month and remains elevated from September of last year, when it was 6.6 percent. The comparable national rate for September was 4.2 percent.

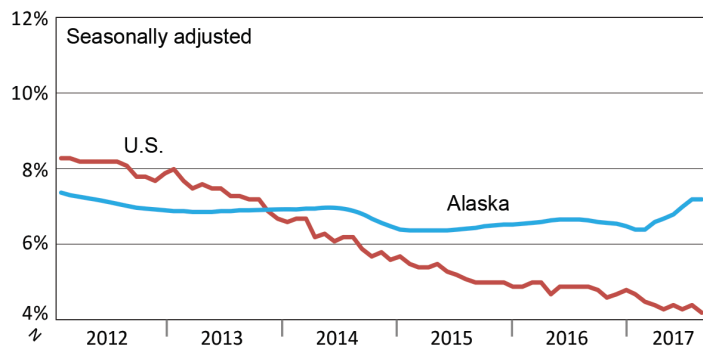
Alaska's not-seasonally adjusted rate was 6.6 percent, up three-tenths of a percentage point from August, which is typical as seasonal work wraps up around the state. Unemployment rates were up in 21 of 29 boroughs and census areas, with notable increases in areas dependent on tourism and fishing. The largest increase was in Bristol Bay, whose rate doubled from 3.6 percent in August to 7.2 percent in September.

Unemployment rates fell in seven boroughs and census areas, and the North Slope Borough's rate was flat. The largest decline was in Kusilvak Census Area, although Kusilvak's rate remained the state's highest at 17.8 percent.

###

Unemployment Rates, Alaska and U.S.

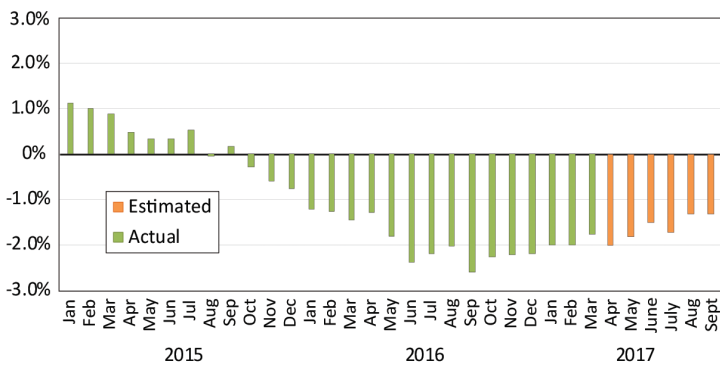
January 2012 to September 2017



Sources: Alaska Department of Labor and Workforce Development, Research and Analysis Section; and U.S. Bureau of Labor Statistics

Wage and Salary Employment

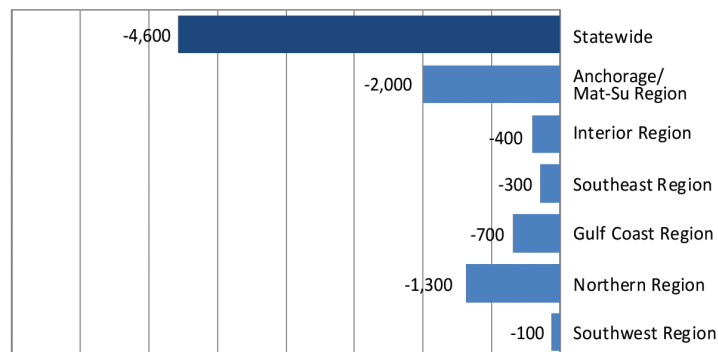
Percent change from same month the previous year



Note: Actual employment counts for 2016 are from the benchmarked Current Employment Statistics and Quarterly Census of Employment and Wages employment series. Estimated employment counts from 2017 are based on a forecast of the QCEW series.

Regional Employment

Change from September 2016 to September 2017



Source: Alaska Department of Labor and Workforce Development, Research and Analysis Section

Area Unemployment Rates

Not seasonally adjusted¹

	Rate		
	9/17 ^P	8/17	9/16
Alaska	6.6	6.3	6.1
Anchorage/Mat-Su Region	6.3	6.0	5.7
Anchorage, Municipality	5.8	5.5	5.2
Matanuska-Susitna Borough	7.9	7.8	7.3
Gulf Coast Region	6.8	6.1	6.7
Kenai Peninsula Borough	7.4	6.8	7.2
Kodiak Island Borough	4.7	4.1	4.8
Valdez-Cordova Census Area	6.3	5.0	6.8
Interior Region	6.3	6.1	5.9
Denali Borough	4.1	3.4	4.0
Fairbanks North Star Borough	5.8	5.5	5.3
Southeast Fairbanks Census Area	8.2	8.4	8.8
Yukon-Koyukuk Census Area	15.5	16.7	14.3
Northern Region	11.7	13.0	10.4
Nome Census Area	11.7	14.2	10.7
North Slope Borough	8.0	8.0	7.2
Northwest Arctic Borough	16.4	17.6	14.1
Southeast Region	5.4	4.9	4.9
Haines Borough	6.6	5.5	6.8
Hoonah-Angoon Census Area	7.9	7.7	7.6
Juneau, City and Borough	4.6	4.1	4.1
Ketchikan Gateway Borough	5.1	4.6	4.8
Petersburg Borough	7.4	7.1	6.5
Prince of Wales-Hyder CA	10.2	9.7	9.2
Sitka, City and Borough	4.4	3.8	3.8
Skagway, Municipality	3.6	2.8	3.4
Wrangell, City and Borough	6.7	6.4	6.3
Yakutat, City and Borough	8.5	8.2	6.6
Southwest Region	10.0	10.0	9.4
Aleutians East Borough	2.6	1.8	2.8
Aleutians West Census Area	4.3	2.7	3.3
Bethel Census Area	13.5	14.9	12.9
Bristol Bay Borough	7.2	3.6	8.2
Dillingham Census Area	9.1	7.9	9.2
Kusilvak Census Area	17.8	21.2	16.2
Lake and Peninsula Borough	9.7	11.3	9.0

P = Preliminary. As more information becomes available, data are revised every month for the previous month and again at the end of every calendar year.

Note: The official definition of unemployment excludes anyone who has not made an active attempt to find work in the four-week period up to and including the week that includes the 12th of the reference month.

¹Unemployment rates that are not seasonally adjusted should not be compared with those that are.

Source: Alaska Department of Labor and Workforce Development, Research and Analysis Section; and U.S. Bureau of Labor Statistics

Employment By Industry

	Average Monthly Employment			Compared to Sep 2016	
	Sep 2017 ¹	Aug 2017 ¹	Sep 2016 ²	Change	Percent
Total Nonfarm Employment	337,500	348,100	342,100	-4,600	-1.3%
Total Private	256,200	270,800	260,400	-4,200	-1.6%
Mining and Logging	13,000	13,000	13,800	-800	-5.8%
Oil and Gas	9,800	9,800	10,500	-700	-6.7%
Construction	16,800	17,700	18,000	-1,200	-6.7%
Manufacturing	13,500	19,500	14,100	-600	-4.3%
Trade, Transportation, and Utilities	66,800	69,400	67,800	-1,000	-1.5%
Wholesale	6,400	6,500	6,500	-100	-1.5%
Retail	36,900	38,000	37,700	-800	-2.1%
Transportation, Warehousing, and Utilities	23,500	24,900	23,600	-100	-0.4%
Information	6,000	6,000	6,300	-300	-4.8%
Financial Activities	11,900	12,600	12,100	-200	-1.7%
Professional and Business Services	28,500	29,100	29,000	-500	-1.7%
Education and Health	49,200	49,200	48,700	500	1.0%
Health Care	36,400	36,400	35,900	500	1.4%
Leisure and Hospitality	39,600	43,400	39,500	100	0.3%
Other Services	10,900	10,900	11,100	-200	-1.8%
Total Government	81,300	77,300	81,700	-400	-0.5%
Federal ³	15,600	15,900	15,600	0	0.0%
State ⁴	24,100	23,100	24,600	-500	-2.0%
Local ⁵	41,600	38,300	41,500	100	0.2%

¹Employment estimates for 2017 are based on a forecast of Quarterly Census of Employment and Wages (QCEW) data.

²Employment estimates for 2016 are from the benchmarked Current Employment Statistics employment data.

³Excludes uniformed military

⁴Includes the University of Alaska

⁵Includes public schools and tribal government

