



Anchorage Employment Report

CO-SPONSORED BY:



TABLE OF CONTENTS

EXECUTIVE SUMMARY	2
GOODS PRODUCING JOBS SUMMARY	3
SERVICES PROVIDING JOBS SUMMARY	4
HEALTH CARE SNAPSHOT	4
PROFESSIONAL & BUSINESS SERVICES SNAPSHOT	5
ANCHORAGE HOUSING	6
ALASKA FORECLOSURES & BANKRUPTCIES.....	7
UNEMPLOYMENT CLAIMS	8
UNEMPLOYMENT ANALYSIS OF SOUTHCENTRAL REGION (TABLE).....	9
LABOR FORCE ANALYSIS CHARTS.....	10
ANCHORAGE EMPLOYMENT ESTIMATES TABLE.....	11
STATE OF ALASKA PRESS RELEASE.....	12

All data referenced in this employment report is from the State of Alaska, Dept. of Labor & Workforce Development website: www.laborstats.alaska.gov and from the U.S. Bureau of Labor Statistics: www.bls.gov.

Report compiled by Anchorage Economic Development Corp. Research Department.

Report generously sponsored by First National Bank Alaska and Alaska Executive Search.

If you are interested in learning more about this data or are interested in how AEDC can help you develop a report, call AEDC at 907.258.3700.

EXECUTIVE SUMMARY

MONTHLY UNEMPLOYMENT

The not seasonally adjusted preliminary unemployment rate for Anchorage in February was 6.7 %, up 0.3 % compared to the January revised rate. This is 2.3 % above the national not seasonally adjusted rate of 4.4 % and 1.5 % below the statewide not seasonally adjusted rate of 8.2 %. The February unemployment rate for Anchorage was 0.8 % higher than it was in February 2017. As always, it should be noted that these are preliminary survey figures for February and will be revised next month.

6.7%

February 2018
Unemployment Rate
for Anchorage (preliminary)

YEAR-TO-DATE UNEMPLOYMENT

The Anchorage 2017 average year-to-date (YTD) not seasonally adjusted unemployment rate rose to 6.5 % at the end of February, 0.8 % higher than at this time last year. A decrease of 3,144 in the employment total and a decrease of 2,017 in the Anchorage labor force during the YTD period has resulted in the reported unemployment total increasing by 1,097. The total number of unemployed people in Anchorage for the month of February is estimated at 10,274 (those actively looking for jobs), 1,059 more than February 2017.

6.5%

2018 YTD
Unemployment Rate
for Anchorage (preliminary)

In the Mat-Su Borough, the February unemployment rate of 10.0 % is up 0.7 % from February 2017 while the Kenai Peninsula's unemployment rate of 10.3 % has increased by 0.8 % compared to February 2018 (see the charts on pages 9-10 for more details).

It is important to note that the Anchorage unemployment numbers represent the labor force residing in Anchorage, and do not describe the number of filled positions in Anchorage. The industry employment estimates referenced in the remainder of this report are representative of the number of jobs in the Municipality of Anchorage, regardless of the job holder's place of residency.

ANCHORAGE INDUSTRY EMPLOYMENT ESTIMATES | YEAR-TO-DATE

As for Anchorage industry employment estimates, which includes total jobs in Anchorage held by city residents and commuters, the YTD average through February for 2018 shows a loss of 2,000 jobs (-1.3%) so far compared to the same period in 2017. The private sector (total jobs minus government jobs) at 119,500 jobs shrunk by 1,200 (-1.0%) jobs during this time, while Government employment at 28,700 jobs has decreased by 800 (-2.7%). Federal jobs decreased by 100 (-1.2%). State government jobs have decreased by 200 (-2.0%) and Local Government jobs have decreased by 400 (-3.7%). Please note that these figures will likely be revised as more data is received and additional analysis is conducted.

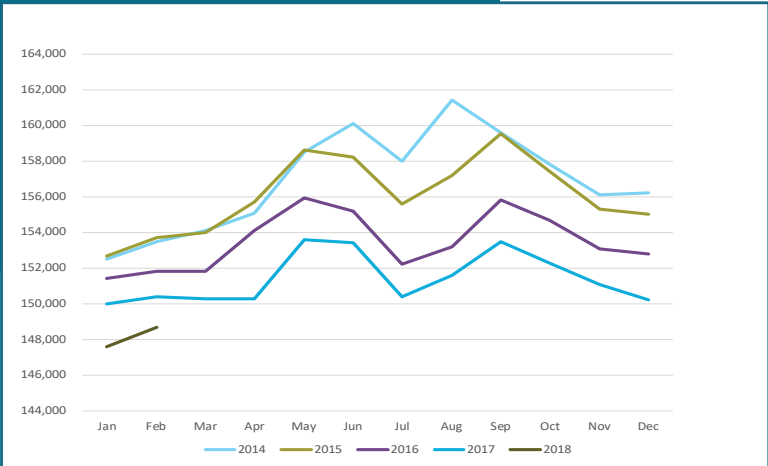
148,700

Total jobs in Anchorage
February 2018 (preliminary)

The Goods Producing category has seen job losses decline significantly so far this year, losing no jobs so far in 2018. The Mining & Logging industry (which includes Oil & Gas employment) is now flat compared to the same period in 2018. Construction is also flat compared to the same period in 2017, while Manufacturing has seen a decrease 100 200 (-5.6%) compared to 2017.

Services Providing industries have lost 2,100 jobs YTD (-1.5%). Categories showing increases included Health Care up 1,000 jobs YTD (+4.9%) and Transportation/Warehouse/Utilities up 400 jobs (+3.8%). Services Providing industries showing losses YTD so far in 2018 include Retail down 500 jobs (-2.9%), Information down 300 jobs (-7.5%), Professional & Business Services down 500 jobs (-2.8%), Leisure & Hospitality (Tourism) down 500 (-3.0%), and Financial Services are currently down 200 jobs (-2.7%).

ANCHORAGE EMPLOYMENT
Municipality of Anchorage 2011-Present



GOODS PRODUCING JOBS
CONSTRUCTION WORK, MINING, OIL & GAS PRODUCTION, MANUFACTURING

Please note that the rest of the job numbers are comparing February 2018 to February 2017 and are not YTD aggregate numbers like the previous section unless noted. This is to more accurately show Anchorage's job market as it currently stands.

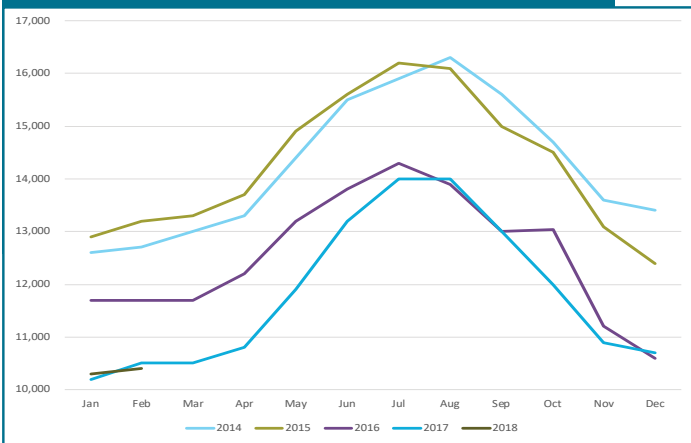
Monthly losses in the number of Goods Producing jobs in Anchorage are no longer contributing to the overall job losses in 2018 YTD. The February total of 10,500 for Goods Producing jobs is -100 (-1.0%) fewer jobs than in February 2017. Jobs in the Mining & Logging industry, which includes Oil & Gas employment, were

flat for the month. Manufacturing was also flat at 1,700 jobs.

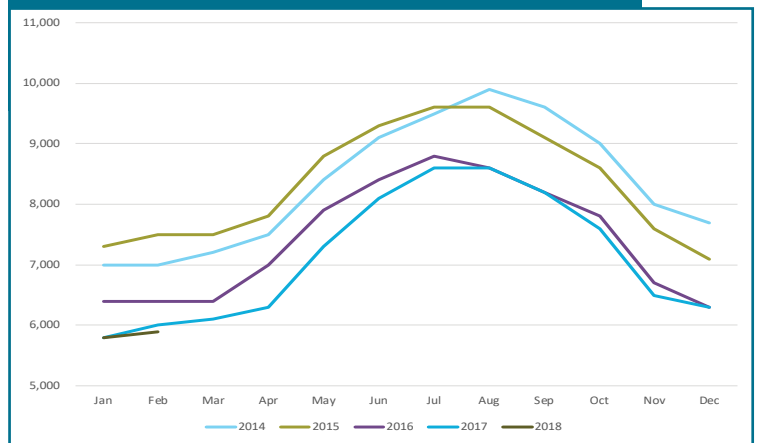
The Anchorage Oil & Gas sector February job total of 2,600 was flat compared to February 2017, clearly indicating year over year losses have stopped. Statewide, oil & gas industry October employment stood at 9,600 and is down 600 jobs (-5.9%) compared to February 2017. While Alaska continues to see job losses overall, the recent oil market recoveries in the low to mid \$60 per barrel range in both domestic and international oil prices are a sign of hope for industry job growth in the future if recent price trends can be sustained. However, the failure of the State of Alaska to finalize tax and fiscal policy is the greatest barrier to new oil industry investment and the jobs that would accompany new investment.

February Construction employment is down slightly at 5,900 jobs, down 100 jobs (-1.7%). Anchorage building permit application values, a measure of interest in construction, have slowed during the first 2 months of 2018, totaling \$75.7 million through the March 16, 2018 reporting period, 15.3% lower than the \$89.3 million at this point last year. Projects submitted for permits are a general mix of private sector and government projects.

GOODS PRODUCING JOBS
Municipality of Anchorage 2011-Present



CONSTRUCTION EMPLOYMENT
Municipality of Anchorage 2011-Present



In Anchorage:

10,400

GOODS PRODUCING JOBS

February 2018 (preliminary)



5,900

CONSTRUCTION JOBS

February 2018 (preliminary)



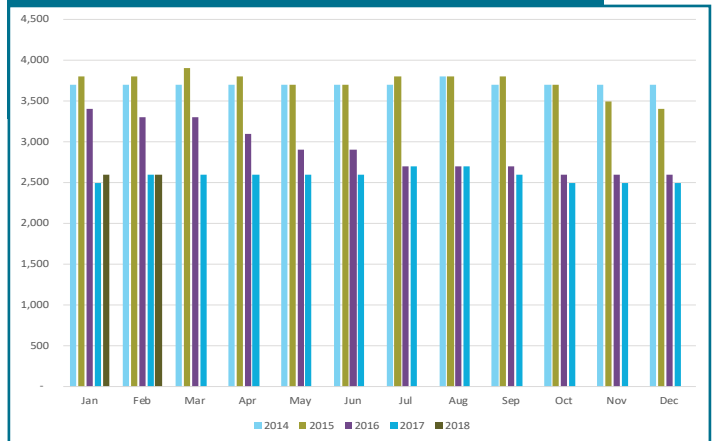
2,600

OIL & GAS JOBS

February 2018 (preliminary)

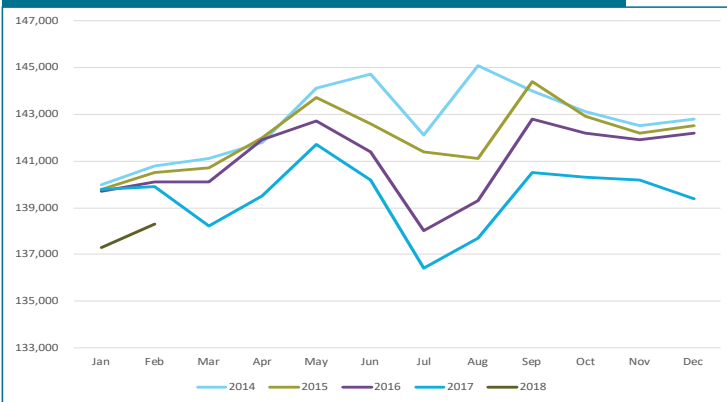
OIL & GAS EMPLOYMENT

Municipality of Anchorage 2011-Present



SERVICES PROVIDING JOBS

Municipality of Anchorage 2011-Present



SERVICES PROVIDING JOBS

ENGINEERING, RETAIL, TOURISM, HEALTH CARE, ETC.

Losses in the number of Services Providing jobs in Anchorage continue to lead the overall downward job trend 2018 YTD. There is a marked slowing of total losses in February, though still pronounced in several industry sectors within this broad category of jobs. For February 2018 total services providing jobs stood at 138,300, down 1,600 (-1.2%) for the month compared to the same month in 2018. The outlook for the remainder of 2018 is for job losses in this category to continue to lead total job losses in Anchorage for the year.

There has been a delayed ripple effect caused by the losses previously seen in the Goods Producing category in high wage sectors like oil and gas and construction in the previous year. Lower levels of consumer spending that resulted from those earlier job losses are now being felt in sectors like retail, accommodations and the food services sectors.

HEALTH CARE EMPLOYMENT

Employment in the Health Care sector shows continued growth, with 800 (+3.8%) more jobs in February over February 2018. As noted in AEDC's 2018 Economic Forecast report, this sector will continue to be one of the bright points in another down year for overall job growth.

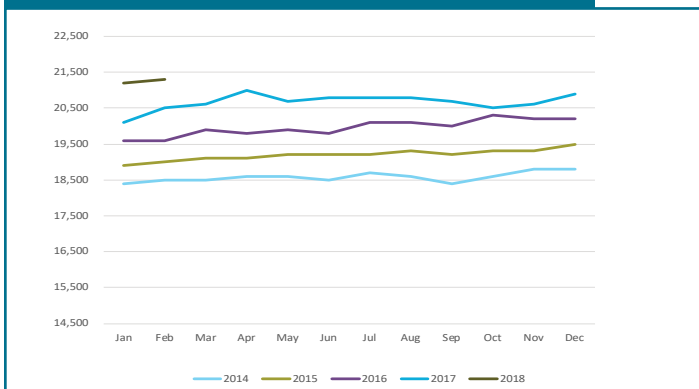
TRANSPORTATION, TRADE & UTILITIES

The February employment in these sectors is down by 400 (-1.2%) jobs this year. The Retail Trade sector, a subset of the TTU industry, is down 600 (-3.6%) jobs in February and these losses are mostly attributable to the closing of 2 Sam's Clubs, while wholesale trade was down 100 jobs (-2.2%).

February job estimates in the Transportation/Warehouse/Utilities sector (a sub-group of the Trade/Transportation/Utilities industry) were up 300 jobs (+2.8%). The continuing strength in the air cargo industry at Ted Stevens International Airport, combined with a strong visitor season outlook in 2018, underscores that this sector will continue to be a steady component of the Anchorage economy.

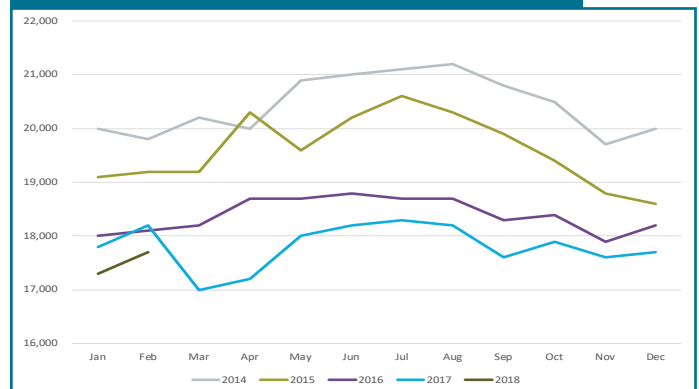
HEALTH CARE EMPLOYMENT

Municipality of Anchorage 2011-Present



PROFESSIONAL & BUSINESS SERVICES

Municipality of Anchorage 2011-Present



PROFESSIONAL & BUSINESS SERVICES

This category includes consulting, engineering, architecture, legal services, accounting, scientific research, waste management & administrative services.

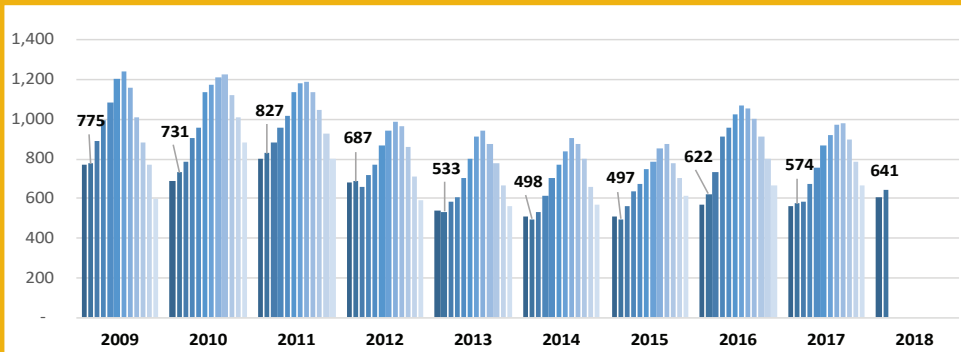
Professional and business services dropped 500 (-2.8%) jobs in February compared to the same month in 2017. While losses in this sector remain pronounced, the sector is seeing a declining trend of job losses the last 8 months. It is likely the rate of job losses in this sector will continue to moderate in the coming months of 2018.

GOVERNMENT

Government jobs for February in Anchorage are sharply down by 900 jobs (-3.1%) compared to February 2017 due mainly to losses in the local Government sector averaging 300 (-2.8%) fewer jobs than February last year. State Government positions have decreased by 200 (-2.0%). Federal Government jobs are down 100 (-1.2%).

ANCHORAGE HOUSING

ANCHORAGE SINGLE FAMILY HOME LISTINGS YTD Total, 10-Year Comparison



Source: Anchorage MLS

SINGLE FAMILY HOME LISTINGS

February data from Anchorage Multiple Listing Service shows that inventories of homes for sale, at 641 in Anchorage, were up 11.7 % compared to February of last year, the fifth highest inventory level for this month in the last 10 years. The Anchorage housing market inventory remains a relatively balanced market of buying and selling opportunities for home sellers and home buyers.



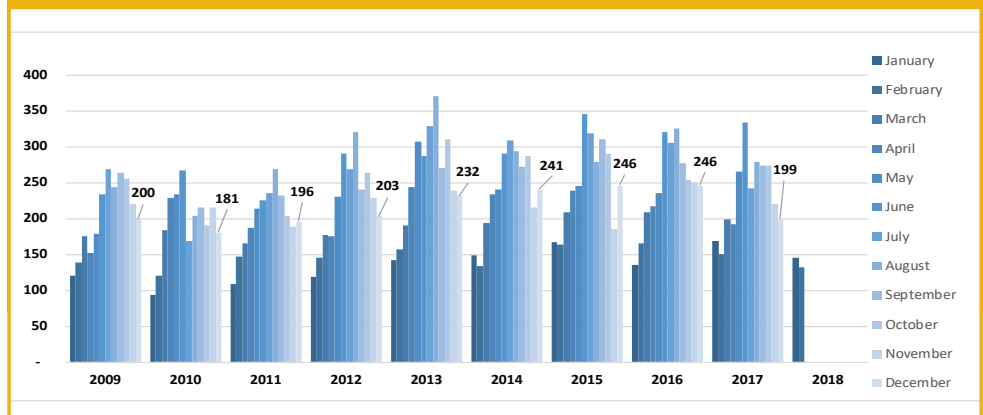
132

Single family home unit sales, February 2018

SINGLE FAMILY HOME MONTHLY UNIT SALES

Anchorage monthly sales of single family homes in February were the ninth-best for the month in the last 10 years. One hundred thirty-two units were sold, a 12.6 % increase compared to February 2017.

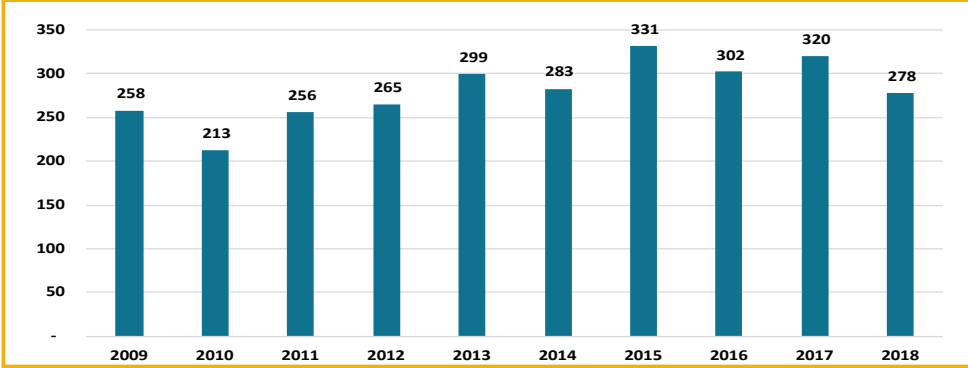
ANCHORAGE SINGLE FAMILY HOME MONTHLY UNIT SALES YTD, 10-Year Comparison as of 2/28/18



Source: Anchorage MLS

ANCHORAGE SINGLE FAMILY TOTAL UNIT SALES


YTD Total, 10-Year Comparison as of 2/28/2018



Source: Anchorage MLS

SINGLE FAMILY HOME YTD TOTAL UNIT SALES

YTD sales for the first 2 months of 2018 are modestly below the same period in 2017 with 278 units sold so far in 2018, down 13.1% compared to the same period last year. 2018 sales are tracking as the fifth best year for total sales in the last decade.



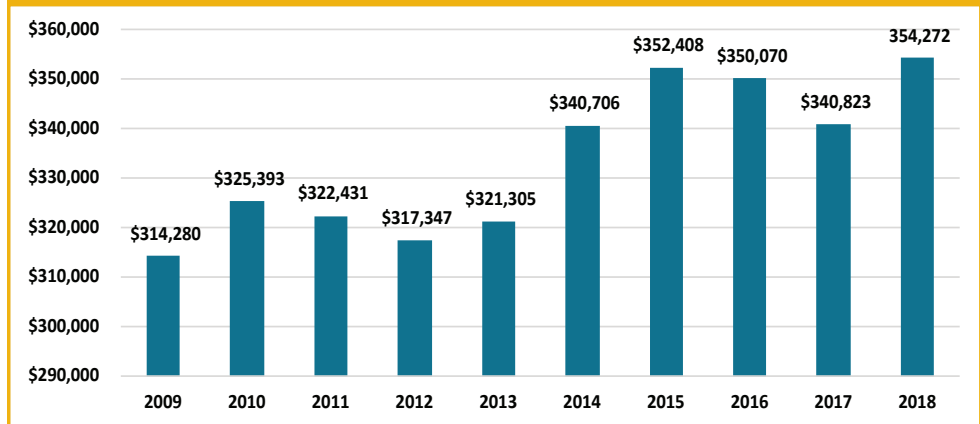
\$354,272
Average home sale price in Anchorage, 2018 YTD

SINGLE FAMILY HOME AVERAGE SALES PRICE

The average price for a home sold in Anchorage YTD through the end of February stood at \$354,272, up \$13,449 compared to the same period in 2017. While average sales prices can vary widely from month to month, the annual average is another good measure of market health. At 3.9% higher than at this point last year, this average price is highest for the 10-year average for this two-month period.

ANCHORAGE SINGLE FAMILY HOME AVG. SALES PRICE

YTD, 10-Year Comparison as of 2/28/18



Source: Anchorage MLS

ALASKA FORECLOSURES

Alaska continues to show solid indicators in this category. Out of the 50 states and District of Columbia, Alaska remains near the lowest at 0.3 % of all active mortgages in foreclosure for the 12 months ending December 2017. The national average was 0.6 %. Another positive indicator is Alaska's serious delinquency rate, at 1.1 % of all mortgages statewide, well below the national average of 1.5 %. Current foreclosure and serious delinquency data shows that the Alaska housing market remains solidly healthy as of this report.

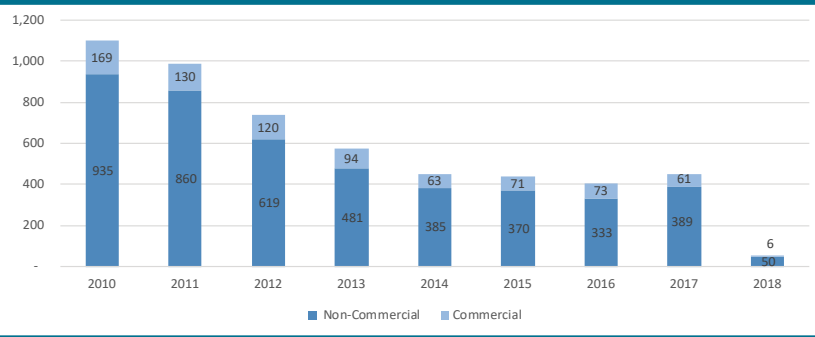
Source: CoreLogic

ALASKA BANKRUPTCIES

According to recently released data from the American Bankruptcy Institute, Alaska bankruptcies remain at near record lows. For the 2 months ending February 28, Alaska ranked 51st out of the 50 states and District of Columbia with a per capita rate of 0.48 bankruptcies per 1,000 Alaskans. This compares to the national per capita rate of 2.15 bankruptcies per 1,000 Americans. The total number of bankruptcies in Alaska YTD, at 56, is down by 23 % compared to the same timeframe in 2017. As measured by this metric, the overall financial health of Alaska's citizens and businesses continues to demonstrate results that are much better than might be expected.

ANNUAL BANKRUPTCY FILINGS

As of 2/28/18

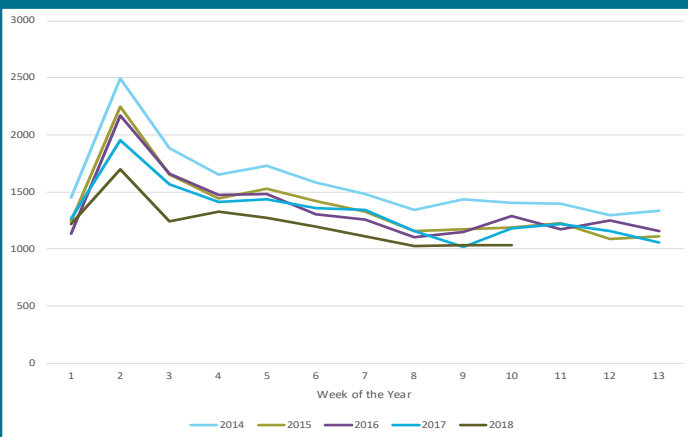


Source: American Bankruptcy Institute

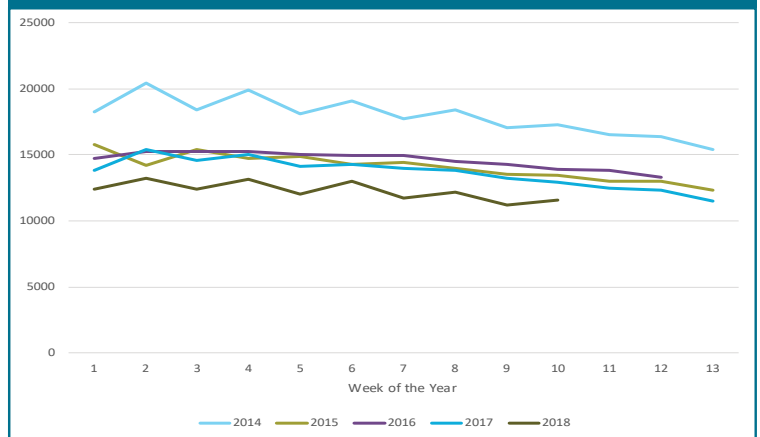
UNEMPLOYMENT CLAIMS

Initial unemployment claim applications can be interpreted as a proxy for layoffs. They tend to fall as job growth accelerates. The trend in weekly totals in 2018 continue to track at record lows below 2016 and 2017 levels, well under recent historic highs seen in 2011. This continuing low range for initial unemployment claims is likely a result of mitigating factors such as older workers retiring in the face of the recession, job losses impacting non-resident workers and, the most likely cause can be attributed to laid off workers leaving Alaska for better job opportunities in the Lower 48 states. In all cases, these are workers not applying for unemployment benefits in Anchorage or Alaska, thereby keeping the unemployment rate lower than might be expected.

INITIAL UNEMPLOYMENT CLAIMS IN ALASKA, Q1



CONTINUING UNEMPLOYMENT CLAIMS IN ALASKA, Q1



Continuing claims figures help to show how well unemployed workers are re-entering the workforce. This total does not include workers receiving extended benefits from the federal government. 2017 weekly numbers in this category continue to track at record lows below 2017 for the same timeframe. This is another indicator of a level of strength still to be found in the Alaska economy. Declining job availability in the future may negatively affect the ability to find jobs for those workers included in this metric. Current trends do not support the likelihood of this trend developing. However, if this trend should develop it will result in an increase in the numbers of workers receiving unemployment benefits in the long term, though how significant that increase might be is highly speculative.

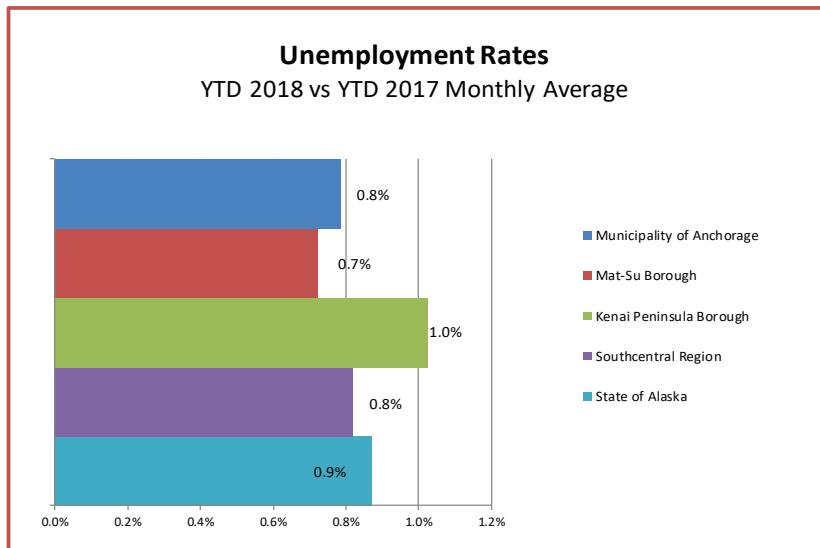
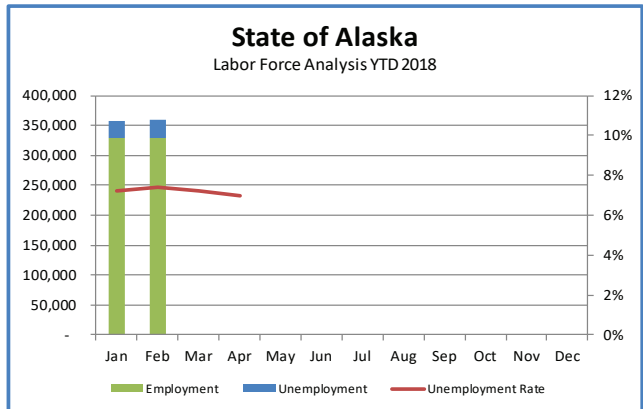
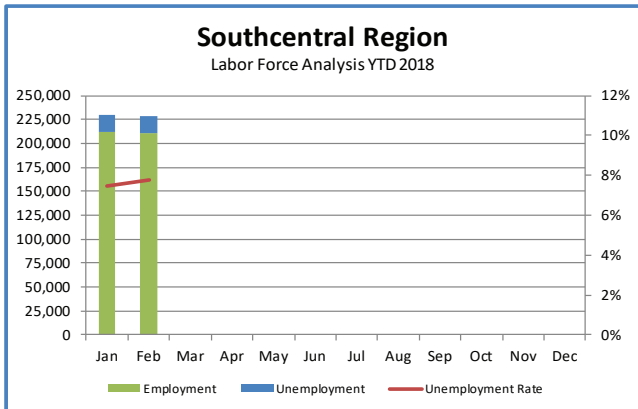
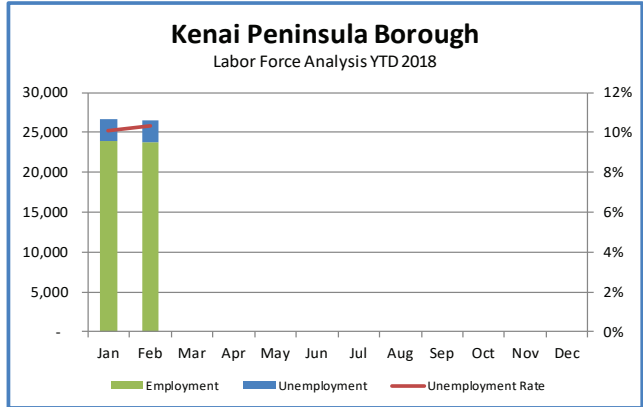
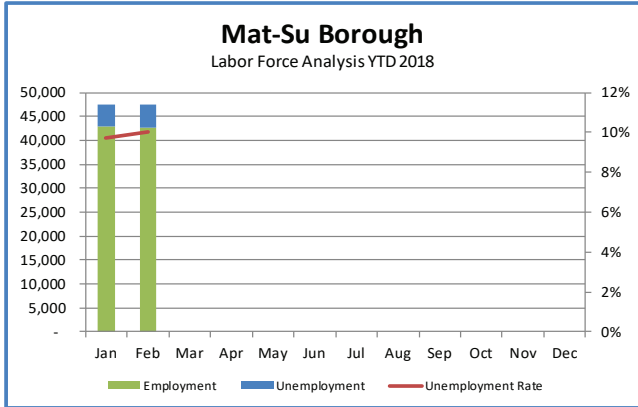
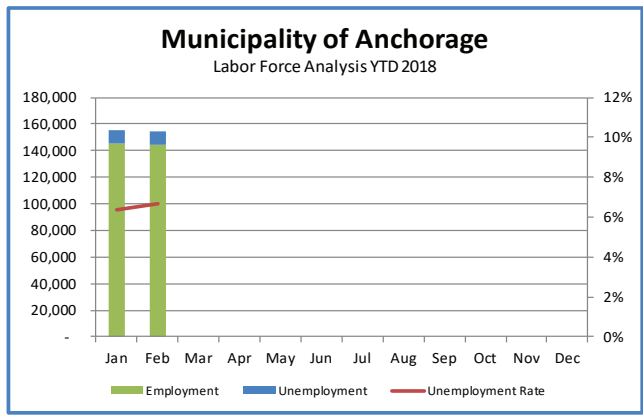
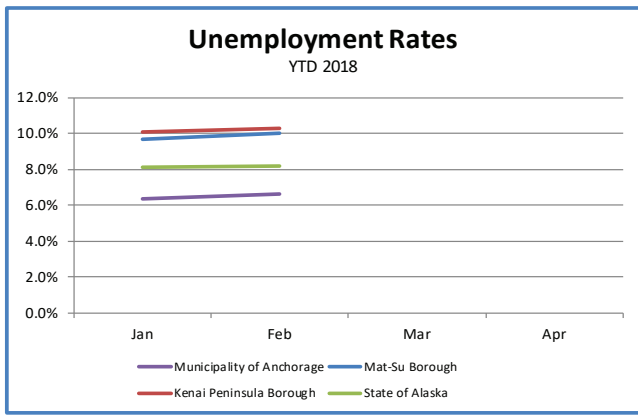
UNEMPLOYMENT ANALYSIS (YTD, 2018)

Anchorage, Mat-Su, Kenai Peninsula Borough

	Jan	Feb	Mar	Apr	May	Jun	Jul	Aug	Sep	Oct	Nov	Dec	18 YTD Avg	17 YTD Avg	18 vs 17 (YTD)	
Municipality of Anchorage	Revised	Preliminary														
Labor Force	155,127	154,400											154,764	156,781	(2,017)	(2,017)
Employment	145,262	144,126											144,694	147,808	(3,114)	(3,114)
Unemployment	9,865	10,274											10,070	8,973	1,097	1,097
Unemployment Rate	6.4%	6.7%											6.5%	5.7%	0.8%	0.8%
Mat-Su Borough																
Labor Force	47,586	47,504											47,545	46,635	910	910
Employment	42,974	42,745											42,860	42,377	483	483
Unemployment	4,612	4,759											4,686	4,259	427	427
Unemployment Rate	9.7%	10.0%											9.9%	9.1%	0.7%	0.7%
Kenai Peninsula Borough																
Labor Force	26,647	26,474											26,561	26,484	77	77
Employment	23,951	23,743											23,847	24,050	(203)	(203)
Unemployment	2,696	2,731											2,714	2,435	279	279
Unemployment Rate	10.1%	10.3%											10.2%	9.2%	1.0%	1.0%
Southcentral Region																
Labor Force	229,360	228,378											228,869	229,900	(1,031)	(1,031)
Employment	212,187	210,614											211,401	214,234	(2,834)	(2,834)
Unemployment	17,173	17,764											17,469	15,666	1,803	1,803
Unemployment Rate	7.49%	7.78%											7.6%	6.8%	0.8%	0.8%
State of Alaska																
Labor Force	357,615	359,577											358,596	358,277	320	320
Employment	328,562	329,945											329,254	332,079	(2,826)	(2,826)
Unemployment	29,053	29,632											29,343	26,198	3,145	3,145
Unemployment Rate	8.1%	8.2%											8.2%	7.3%	0.9%	0.9%

*Note: These numbers reflect employment, unemployment, etc. for only those people that are residence of the specified City/Region, thus are not inclusive of people who commute to another city for their jobs.

(Ex: Someone lives in Wasilla but works in Anchorage. They would be counted in the Mat-Su Borough's labor force and employment numbers, not the Municipality of Anchorage numbers)



INDUSTRY EMPLOYMENT ESTIMATES 2018

Municipality of Anchorage

Federal Data Series	CES		CES	CES	CES	CES	CES	CES	CES	CES	CES	CES	CES	CES	2018 YTD Avg.	2017 YTD Avg.	2018 vs 2017 YTD Change	% Change
	Jan Revised	Feb Preliminary	Mar	Apr	May	Jun	Jul	Aug	Sep	Oct	Nov	Dec						
% Change from same month year ago	-1.6%	-1.1%	-100.0%	-100.0%	-100.0%	-100.0%	-100.0%	-100.0%	-100.0%	-100.0%	-100.0%	-100.0%	-100.0%	-100.0%				
Total Nonfarm	147,600	148,700													148,200	150,200	-2,000	-1.3%
Goods Producing	10,300	10,400													10,400	10,400	0	0.0%
Mining and Logging ²	2,700	2,700													2,700	2,700	0	0.0%
Oil & Gas	2,600	2,600													2,600	2,600	0	0.0%
Construction	5,800	5,900													5,900	5,900	0	0.0%
Manufacturing	1,700	1,700													1,700	1,800	-100	-5.6%
Services Providing	137,300	138,300													137,800	139,900	-2,100	-1.5%
Trade/Transportation/Utilities	32,100	32,100													32,100	32,400	-300	-0.9%
Wholesale Trade	4,600	4,600													4,600	4,700	-100	-2.1%
Retail Trade	16,800	16,700													16,800	17,300	-500	-2.9%
Trans/Warehouse/Utilities	10,800	10,800													10,800	10,400	400	3.8%
Information	3,700	3,700													3,700	4,000	-300	-7.5%
Financial Activities	7,200	7,200													7,200	7,400	-200	-2.7%
Professional & Business Svcs	17,300	17,700													17,500	18,000	-500	-2.8%
Educational & Health Services	26,600	26,700													26,700	26,400	300	1.1%
Health Care	21,200	21,300													21,300	20,300	1,000	4.9%
Leisure & Hospitality	16,300	16,400													16,400	16,900	-500	-3.0%
Accommodation	3,200	3,200													3,200	3,200	0	0.0%
Food Svcs & Drinking Places	10,700	10,700													10,700	11,300	-600	-5.3%
Other Services	5,600	5,600													5,600	5,600	0	0.0%
Government	28,600	28,800													28,700	29,500	-800	-2.7%
Federal Government	8,300	8,400													8,400	8,500	-100	-1.2%
State Government	9,800	9,900													9,900	10,100	-200	-2.0%
State Education	2,400	2,600													2,500	2,600	-100	-3.8%
Local Government	10,400	10,600													10,500	10,900	-400	-3.7%
Local Education	7,400	7,500													7,500	8,000	-500	-6.3%

The Current Employment Statistics (CES) survey, is based on a survey of approximately 146,000 businesses and government agencies representing approximately 623,000 workites throughout the United States. The primary statistics derived from the survey are monthly estimates of employment, hours, and earnings for the Nation, States, and major metropolitan areas. Estimates for the current year may be subject to large revisions that will be published early in the following year. CES data in the current year is presented as compared to CES data from the same months in the previous year.

The Quarterly Census of Employment and Wages (QCEW) program publishes a quarterly count of employment and wages reported by employers covering 98 percent of U.S. jobs, available at the county, MSA, state and national levels by industry. This data is considered to be the more definitive analysis of employment figures and trends. QCEW data in the current year is presented as compared to QCEW data from the same months in the previous year.

- Nonfarm Wage & Salary excludes self-employed workers, fishers, domestics, and unpaid family workers.
 - All totals are seasonally non-adjusted totals.
 - Government includes employees of public school systems and the University of Alaska.

- Source: Alaska Department of Labor and Workforce Development, Research and Analysis Section
 * Note: The above numbers are representative of all people employed in the Municipality of Anchorage, this is inclusive of workers who claim residence outside of the Municipality of Anchorage. (Ex: someone who lives in the Mat-Su, but works in Anchorage would be included in these number)

Quick Comparisons	
18 vs 17 February	-1,700 -1.1%
18 vs 17 1st Qtr	-2,100 -1.4%
18 vs 17 2nd Qtr	
18 vs 17 3rd Qtr	
18 vs 17 4th Qtr	



State of Alaska

Department of Labor & Workforce Development



Heidi Drygas
Commissioner

Heather Beaty
Communications
Director

907.269.3569
heather.beaty@alaska.gov

FOR IMMEDIATE RELEASE
March 23, 2018

No. 18-10

For more information: Neal Fried, Economist
907-269-4861, Neal.Fried@Alaska.Gov

Employment Down 0.7 Percent, Unemployment Rate Unchanged

JUNEAU, Alaska—Alaska's total employment was down an estimated 0.7 percent in February from February 2017, a loss of about 2,300 jobs.

As a percentage, oil and gas employment's decline of 6.8 percent was the largest (-700 jobs). Retail was down 2.3 percent (-800 jobs). Construction fell 0.8 percent (-100 jobs), a smaller loss than in recent months. Employment fell in all three sectors of government: federal by 0.7 percent, state by 1.7 percent and local by 0.7 percent. Local government's declines were in public education.

The manufacturing sector and the transportation, warehousing and utilities sector both gained a modest 100 jobs. Health care continued to be the outlier, adding 1,000 jobs since February 2017 for a 2.7 percent increase.

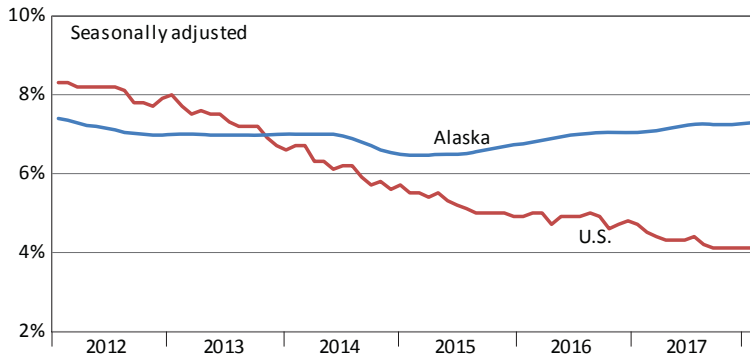
Alaska's seasonally adjusted unemployment rate remained at 7.3 percent in February. The comparable national rate was 4.1 percent.

Alaska's not-seasonally adjusted rate was 8.2 percent, up one-tenth of a percentage point from January. Unemployment rates rose in 16 of 29 boroughs and census areas and remained the same in three. The lowest rates were in the Aleutians East Borough (1.9 percent) and the Aleutians West Census Area (2.4 percent), which is typical for areas with winter fisheries. Rates were highest in Skagway, which depends on summer tourism and always has higher rates in the off-season (24.8 percent), followed by rural areas with limited job opportunities year-round.

###

Unemployment Rates, Alaska and U.S.

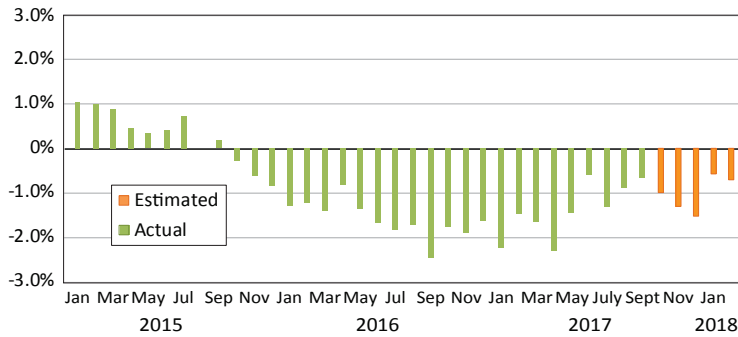
January 2012 to February 2018



Sources: Alaska Department of Labor and Workforce Development, Research and Analysis Section; and U.S. Bureau of Labor Statistics

Wage and Salary Employment

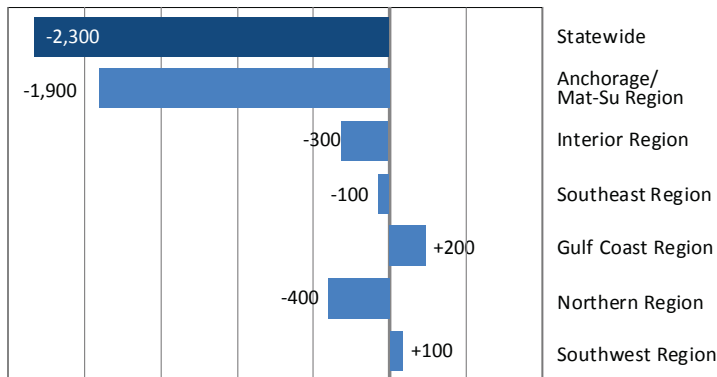
Percent change from same month the previous year



Source: Alaska Department of Labor and Workforce Development, Research and Analysis Section

Regional Employment

Change from same month the previous year



Source: Alaska Department of Labor and Workforce Development, Research and Analysis Section

Area Unemployment Rates

Not seasonally adjusted¹

	Rate		
	2/18 ^P	1/17	2/17
Alaska	8.2	8.1	7.9
Anchorage/Mat-Su Region	7.4	7.1	7.1
Anchorage, Municipality	6.7	6.4	6.3
Matanuska-Susitna Borough	10.0	9.6	9.8
Gulf Coast Region	9.7	9.9	9.5
Kenai Peninsula Borough	10.3	10.1	10.3
Kodiak Island Borough	5.4	8.4	4.8
Valdez-Cordova Census Area	12.2	11.4	11.8
Interior Region	8.5	8.5	8.2
Denali Borough	19.3	21.1	22.7
Fairbanks North Star Borough	7.4	7.4	6.9
Southeast Fairbanks Census Area	12.8	12.3	13.0
Yukon-Koyukuk Census Area	21.4	20.7	22.0
Northern Region	12.4	11.7	12.2
Nome Census Area	13.7	13.1	13.1
North Slope Borough	7.2	6.8	7.2
Northwest Arctic Borough	17.1	16.4	17.6
Southeast Region	8.3	8.2	8.0
Haines Borough	16.9	17.2	13.4
Hoonah-Angoon Census Area	22.2	21.3	19.1
Juneau, City and Borough	5.4	5.4	5.4
Ketchikan Gateway Borough	8.1	8.3	8.2
Petersburg Borough	12.3	12.9	11.9
Prince of Wales-Hyder CA	15.9	14.6	14.6
Sitka, City and Borough	5.3	5.6	5.9
Skagway, Municipality	24.8	23.5	22.4
Wrangell, City and Borough	10.5	10.6	9.7
Yakutat, City and Borough	12.2	12.2	12.2
Southwest Region	10.5	11.2	10.0
Aleutians East Borough	1.9	3.2	1.7
Aleutians West Census Area	2.4	3.0	2.3
Bethel Census Area	14.6	14.3	14.1
Bristol Bay Borough	18.2	17.0	15.8
Dillingham Census Area	10.5	10.2	10.1
Kusilvak Census Area	22.3	21.0	21.2
Lake and Peninsula Borough	16.6	17.0	14.9

P = Preliminary. As more information becomes available, data are revised every month for the previous month and again at the end of every calendar year.

Note: The official definition of unemployment excludes anyone who has not made an active attempt to find work in the four-week period up to and including the week that includes the 12th of the reference month.

¹Unemployment rates that are not seasonally adjusted should not be compared with those that are.

Source: Alaska Department of Labor and Workforce Development, Research and Analysis Section; and U.S. Bureau of Labor Statistics

Employment By Industry

	Average Monthly Employment			Compared to Feb 2017	
	Feb 2018	Jan 2018	Feb 2017	Change	Percent
Total Nonfarm Employment	315,000	308,700	317,300	-2,300	-0.7%
Total Private	233,600	228,600	235,100	-1,500	-0.6%
Mining and Logging	12,600	12,600	13,100	-500	-3.8%
Oil and Gas	9,600	9,600	10,300	-700	-6.8%
Construction	12,700	11,900	12,800	-100	-0.8%
Manufacturing	12,800	9,500	12,700	100	0.8%
Trade, Transportation, and Utilities	60,100	60,700	61,000	-900	-1.5%
Wholesale	6,100	6,100	6,300	-200	-3.2%
Retail	34,300	35,000	35,100	-800	-2.3%
Transportation, Warehousing, and Utilities	19,700	19,600	19,600	100	0.5%
Information	5,800	5,800	6,100	-300	-4.9%
Financial Activities	11,600	11,500	11,700	-100	-0.9%
Professional and Business Services	27,000	26,300	27,400	-400	-1.5%
Education and Health	50,300	49,900	49,400	900	1.8%
Health Care	38,000	37,800	37,000	1,000	2.7%
Leisure and Hospitality	29,900	29,700	30,100	-200	-0.7%
Other Services	10,800	10,700	10,800	0	0.0%
Total Government	81,400	80,100	82,200	-800	-1.0%
Federal ¹	14,500	14,300	14,600	-100	-0.7%
State ²	23,800	23,400	24,200	-400	-1.7%
Local ³	43,100	42,400	43,400	-300	-0.7%

¹Excludes uniformed military

²Includes the University of Alaska

³Includes public schools and tribal government

Source: Alaska Department of Labor and Workforce Development, Research and Analysis Section

