



# Anchorage Employment Report

CO-SPONSORED BY:



## TABLE OF CONTENTS

EXECUTIVE SUMMARY .....	2
GOODS PRODUCING JOBS SUMMARY .....	3
SERVICES PROVIDING JOBS SUMMARY .....	4
HEALTH CARE SNAPSHOT .....	4
PROFESSIONAL & BUSINESS SERVICES SNAPSHOT .....	5
ANCHORAGE HOUSING .....	6
ALASKA FORECLOSURES & BANKRUPTCIES.....	7
UNEMPLOYMENT CLAIMS .....	8
UNEMPLOYMENT ANALYSIS OF SOUTHCENTRAL REGION (TABLE).....	9
LABOR FORCE ANALYSIS CHARTS.....	10
ANCHORAGE EMPLOYMENT ESTIMATES TABLE.....	11
STATE OF ALASKA PRESS RELEASE.....	12

All data referenced in this employment report is from the State of Alaska, Dept. of Labor & Workforce Development website: [www.laborstats.alaska.gov](http://www.laborstats.alaska.gov) and from the U.S. Bureau of Labor Statistics: [www.bls.gov](http://www.bls.gov).

**Report compiled by Anchorage Economic Development Corp. Research Department.**

**Report generously sponsored by First National Bank Alaska and Alaska Executive Search.**

If you are interested in learning more about this data or are interested in how AEDC can help you develop a report, call AEDC at 907.258.3700.

## EXECUTIVE SUMMARY

### MONTHLY UNEMPLOYMENT

The not seasonally adjusted preliminary unemployment rate for Anchorage in March was 6.7 percent, down .03 percent compared to the February revised rate. This is 2.6 percent above the national not seasonally adjusted rate of 4.1 percent and 1.2 percent below the statewide not seasonally adjusted rate of 7.9 percent. The March unemployment rate for Anchorage was 0.9 percent higher than it was in March 2017. As always, it should be noted that these are preliminary survey figures for March and will be revised next month.

# 6.7%

March 2018  
Unemployment Rate  
for Anchorage (preliminary)

### YEAR-TO-DATE UNEMPLOYMENT

The Anchorage 2018 average year-to-date (YTD) not seasonally adjusted unemployment rate rose to 6.5 percent at the end of March, 1.1 percent higher than at this time last year. A decrease of 3,551 in the employment total and a decrease of 2,666 in the Anchorage labor force during the YTD period has resulted in the reported unemployment total increasing by 959. The total number of unemployed people in Anchorage for the month of March is estimated at 9,830 (those actively looking for jobs), 680 more than March 2017.

# 6.5%

2018 YTD  
Unemployment Rate  
for Anchorage (preliminary)

In the Mat-Su Borough, the March unemployment rate of 9.7 percent is up 0.5 percent from March 2017 while the Kenai Peninsula's unemployment rate of 9.9 percent has increased by 0.8 percent compared to March 2017 (see the charts on pages 9-10 for more details).

It is important to note that the Anchorage unemployment numbers represent the labor force residing in Anchorage, and do not describe the number of filled positions in Anchorage. The industry employment estimates referenced in the remainder of this report are representative of the number of jobs in the Municipality of Anchorage, regardless of the job holder's place of residency.

### ANCHORAGE INDUSTRY EMPLOYMENT ESTIMATES | YEAR-TO-DATE

As for Anchorage industry employment estimates, which includes total jobs in Anchorage held by city residents and commuters, the YTD average through March for 2018 shows a loss of 2,000 jobs (-1.3%) so far compared to the same period in 2017. The private sector (total jobs minus government jobs) at 119,400 jobs shrunk by 1,300 (-1.1%) jobs during this time, while Government employment at 28,700 jobs has decreased by 700 (-2.4%). Federal jobs decreased by 200 (-2.4%). State government jobs have decreased by 200 (-2.0%) and Local Government jobs have decreased by 300 (-2.8%). Please note that these figures will likely be revised as more data is received and additional analysis is conducted.

# 148,400

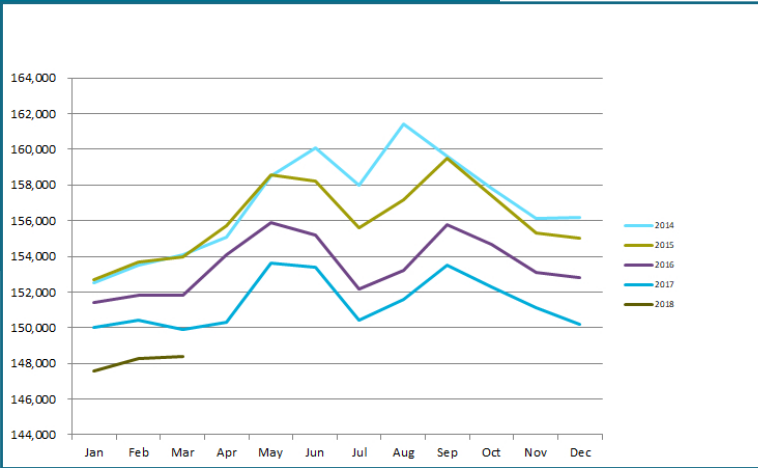
Total jobs in Anchorage  
March 2018 (preliminary)

The Goods Producing category has seen job losses decline significantly so far this year, losing no jobs so far in 2018. The Mining & Logging industry (which includes Oil & Gas employment) is now flat compared to the same period in 2018. Construction is down 100 jobs (-1.7%) compared to the same period in 2017, while Manufacturing is flat compared to 2017.

Services Providing industries have lost 2,000 jobs YTD (-1.4%). Categories showing increases included Health Care up 900 jobs YTD (+4.4%) and Transportation/Warehouse/Utilities up 400 jobs (+3.8%). Services Providing industries showing losses YTD so far in 2018 include Retail down 600 jobs (-3.5%), Information down 200 jobs (-5.1%), Professional & Business Services down 500 jobs (-2.8%), Leisure & Hospitality (Tourism) down 500 (-3.0%), and Financial Services are currently down 200 jobs (-2.7%).

## ANCHORAGE EMPLOYMENT

Municipality of Anchorage 2014-Present



## GOODS PRODUCING JOBS

CONSTRUCTION WORK, MINING, OIL & GAS PRODUCTION, MANUFACTURING

Please note that the rest of the job numbers are comparing March 2018 to March 2017 and are not YTD aggregate numbers like the previous section unless noted. This is to more accurately show Anchorage's job market as it currently stands.

Monthly losses in the number of Goods Producing jobs in Anchorage are no longer contributing to the overall job losses in 2018 YTD. The March total of 10,600 for Goods Producing jobs is -100 (-1.0%) fewer jobs than in March 2017. Jobs in the Mining & Logging industry, which includes Oil & Gas employment, were flat for the

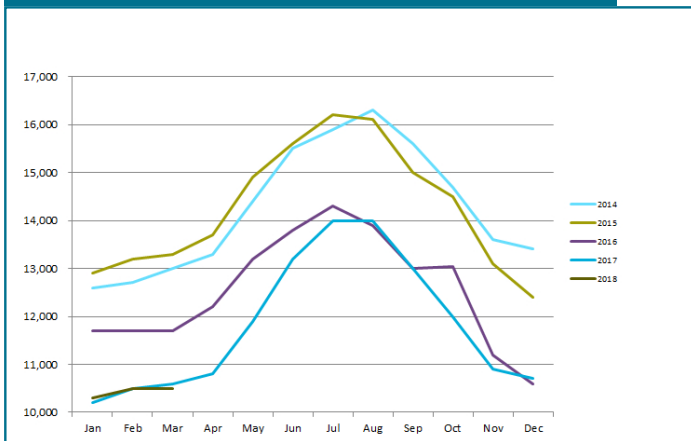
month. Manufacturing was up 100 jobs (+5.6%) at 1,800 jobs.

The Anchorage Oil & Gas sector March job total of 2,600 was flat compared to March 2017, clearly indicating year over year losses have stopped. Statewide, oil & gas industry March employment stood at 9,400 and is down 600 jobs (-6.0%) compared to March 2017. While Alaska continues to see job losses overall, the recent oil market recoveries in the low to mid \$70 per barrel range in both domestic and international oil prices are a positive sign for industry job growth in the future if recent price trends can be sustained. However, the failure of the State of Alaska to finalize tax and fiscal policy continues to be the greatest barrier to new oil industry investment and the jobs that would accompany new investment.

March Construction employment is flat at 6,000 jobs. Anchorage building permit application values, a measure of interest in construction, have slowed during the first 4 months of 2018, totaling \$127.8 million through the April 28, 2018 reporting period, -25.5% lower than the \$171.5 million at this point last year. Projects submitted for permits are a general mix of private sector and government projects.

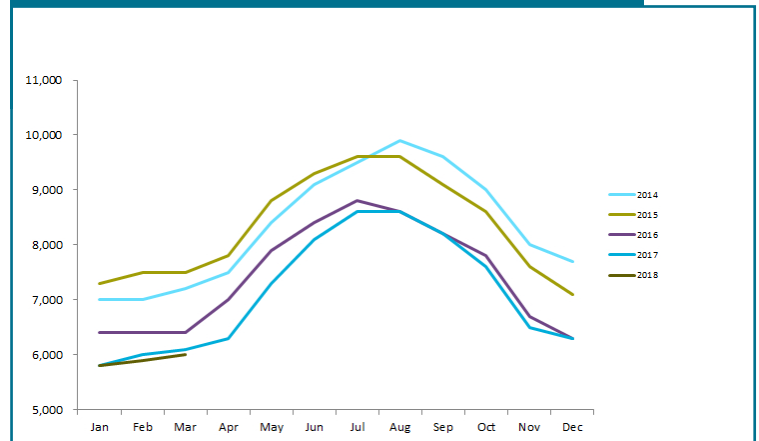
## GOODS PRODUCING JOBS

Municipality of Anchorage 2014-Present



## CONSTRUCTION EMPLOYMENT

Municipality of Anchorage 2014-Present



In Anchorage:

10,600

**GOODS PRODUCING JOBS**

March 2018 (preliminary)



6,000

**CONSTRUCTION JOBS**

March 2018 (preliminary)



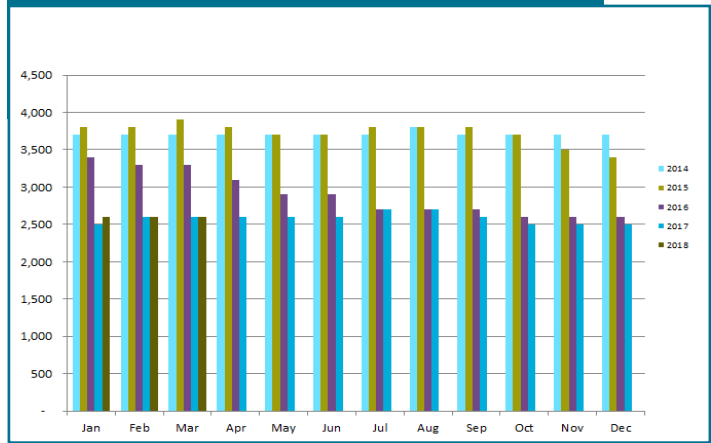
2,600

**OIL & GAS JOBS**

March 2018 (preliminary)

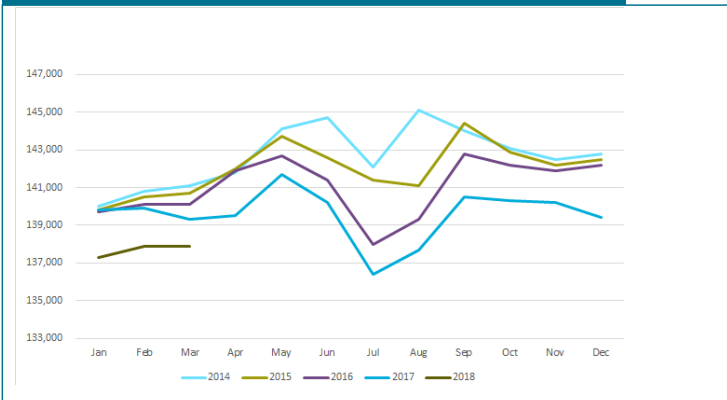
### OIL & GAS EMPLOYMENT

Municipality of Anchorage 2014-Present



### SERVICES PROVIDING JOBS

Municipality of Anchorage 2014-Present



### SERVICES PROVIDING JOBS

**ENGINEERING, RETAIL, TOURISM, HEALTH CARE, ETC.**

Losses in the number of Services Providing jobs in Anchorage continue to lead the overall downward job trend 2018 YTD. There is a marked slowing of total losses in March, though still pronounced in several industry sectors within this broad category of jobs. For March 2018 total services providing jobs stood at 137,900, down 1,400 (-1.0%) for the month compared to the same month in 2018. The outlook for the remainder of 2018 is for job losses in this category to continue to lead total job losses in Anchorage for the year.

The ongoing delayed ripple effect caused by the losses previously seen in the Goods Producing category in high wage sectors like oil and gas and construction in the previous year continue to negatively impact the Services sector. Lower levels of consumer spending that resulted from those earlier job losses are now being felt in sectors like retail, accommodations and the food services sectors.

### HEALTH CARE EMPLOYMENT

Employment in the Health Care sector shows continued growth, with 800 (+3.7%) more jobs in March 2018 over March 2017. As noted in AEDC's 2018 Economic Forecast report, this sector is tracking within our projection and will continue to be one of the bright points in another down year for overall job growth.

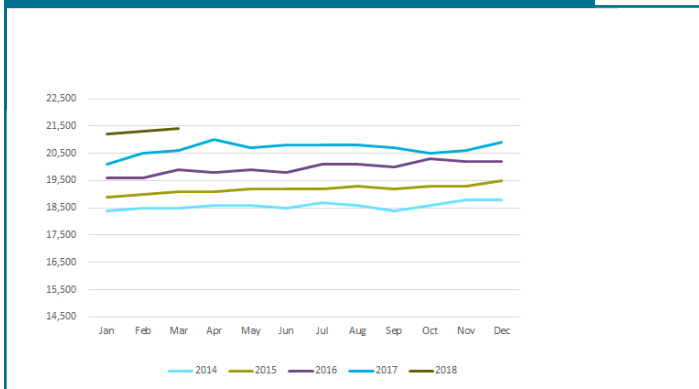
## TRANSPORTATION, TRADE & UTILITIES

The March employment in these sectors are down 300 (-1.9%) jobs this year. The Retail Trade sector, a subset of the TTU industry, is down 600 (-3.6%) jobs in March and these losses is mostly attributable to the closing of 2 Sam's Clubs and Sears, while wholesale trade was down 100 jobs (-2.2%).

On a more positive note, March job estimates in the Transportation/Warehouse/Utilities sector (a sub-group of the Trade/Transportation/Utilities industry) remain up at 300 jobs (+2.8%). The continuing strength in the air cargo industry at Ted Stevens International Airport, combined with a strong visitor season outlook in 2018 and its effect on passenger counts, underscores that this sector will continue to be a steady component of the Anchorage economy.

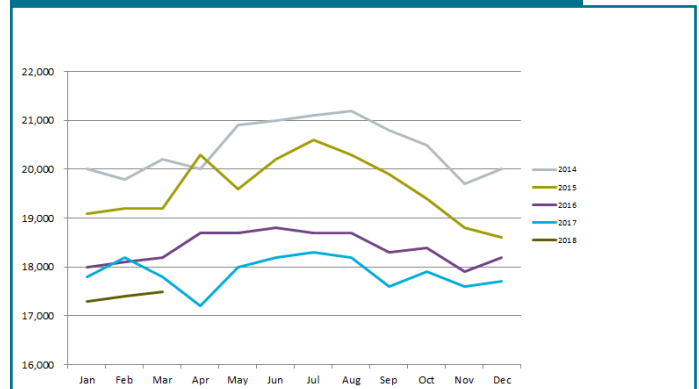
### HEALTH CARE EMPLOYMENT

Municipality of Anchorage 2014-Present



### PROFESSIONAL & BUSINESS SERVICES

Municipality of Anchorage 2014-Present



## PROFESSIONAL & BUSINESS SERVICES

This category includes consulting, engineering, architecture, legal services, accounting, scientific research, waste management & administrative services.

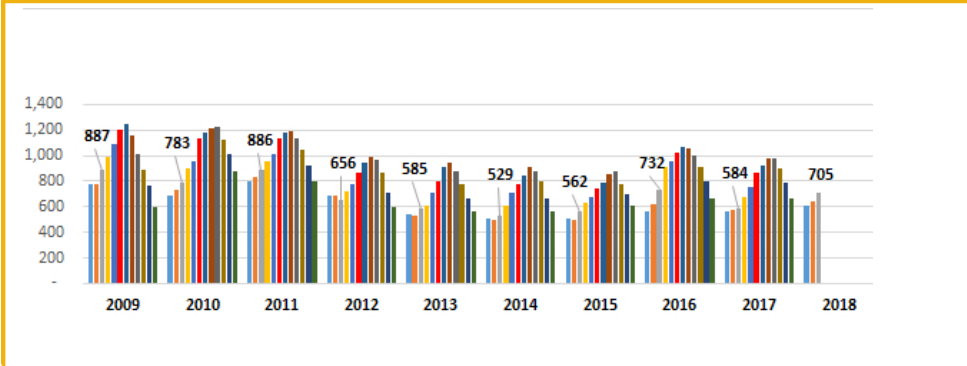
Professional and business services dropped 300 (-2.8%) jobs in March compared to the same month in 2017. While losses in this sector remain pronounced, the sector is seeing a pronounced declining trend of job losses the last 9 months. It is likely the rate of job losses in this sector will bottom out in the coming months of 2018.

## GOVERNMENT

Government jobs for March in Anchorage are down by 500 jobs (-1.7%) compared to March 2017 due to losses in the local Government sector down 200 jobs (-2.8%) while State Government positions have also decreased by 200 (-2.0%). Federal Government jobs are down 200 (-2.4%).

# ANCHORAGE HOUSING

## ANCHORAGE SINGLE FAMILY HOME LISTINGS YTD Total, 10-Year Comparison



Source: Anchorage MLS

## SINGLE FAMILY HOME LISTINGS

March data from Anchorage Multiple Listing Service shows that inventories of homes for sale, at 705 in Anchorage, were up 20.7 percent compared to March 2017, the fifth-highest inventory level for this month in the last 10 years. The Anchorage housing market inventory remains a relatively balanced market of buying and selling opportunities for home sellers and home buyers.



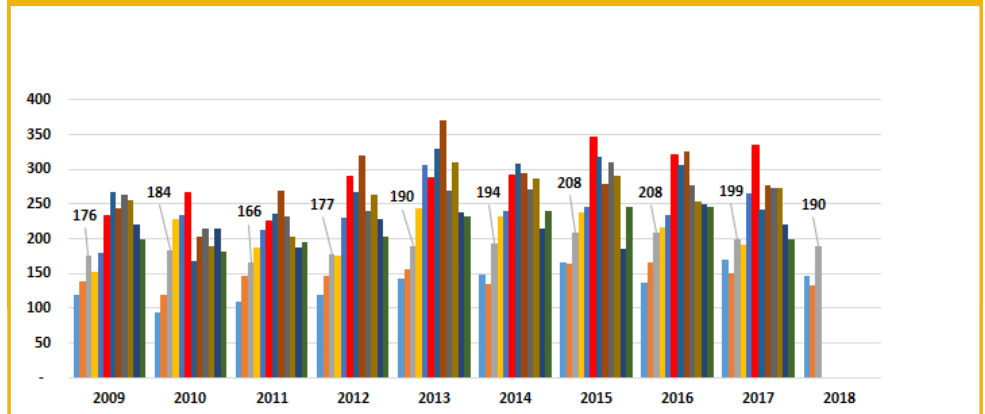
# 190

Single family home unit sales, March 2018

## SINGLE FAMILY HOME MONTHLY UNIT SALES

Anchorage monthly sales of single family homes in March were the fifth best for the month in the last 10 years. One hundred ninety units were sold, a 4.5 percent decrease compared to March 2017.

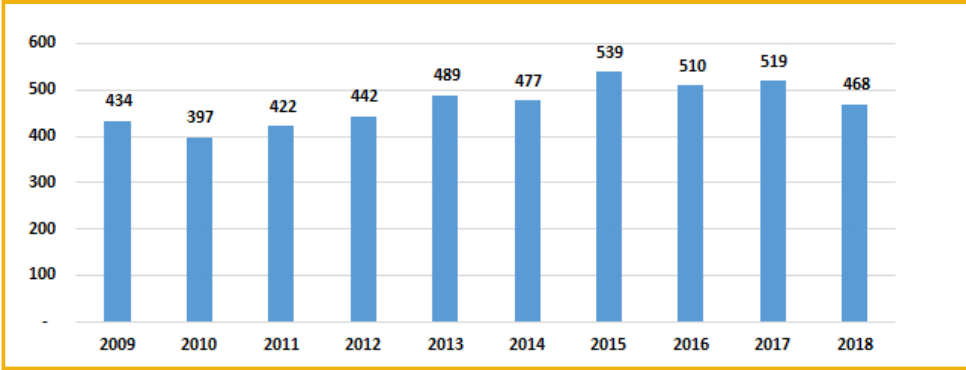
## ANCHORAGE SINGLE FAMILY HOME MONTHLY UNIT SALES YTD, 10-Year Comparison as of 3/31/18



Source: Anchorage MLS

## ANCHORAGE SINGLE FAMILY TOTAL UNIT SALES

YTD Total, 10-Year Comparison as of 3/31/2018



Source: Anchorage MLS

## SINGLE FAMILY HOME YTD TOTAL UNIT SALES

YTD sales for the first 3 months of 2018 are modestly below the same period in 2017 with 468 units sold so far in 2018, down 9.8% compared to the same period last year. 2018 sales are tracking as the sixth-best year for total sales in the last decade.



# \$360,549

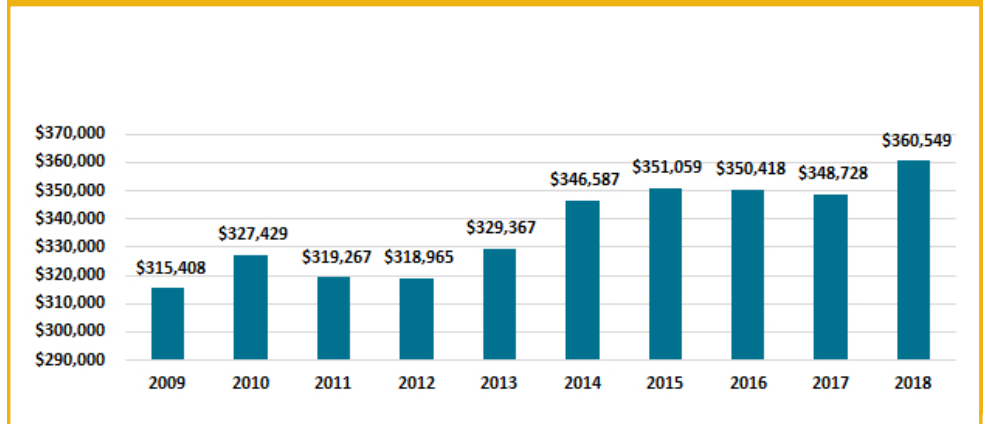
Average home sale price in Anchorage, 2018 YTD

## SINGLE FAMILY HOME AVERAGE SALES PRICE

The average price for a home sold in Anchorage YTD through the end of March stood at \$360,549, up \$12,121 compared to the same period in 2017. While average sales prices can vary widely from month to month, the annual average is another good measure of market health. At 3.5% percent higher than at this point last year, this average price is highest for the 10-year average for this three-month period.

## ANCHORAGE SINGLE FAMILY HOME AVG. SALES PRICE

YTD, 10-Year Comparison as of 3/31/18



Source: Anchorage MLS

## ALASKA FORECLOSURES

Alaska continues to show solid indicators in this category. Out of the 50 states and District of Columbia, Alaska remains near the lowest at 0.4 percent of all active mortgages in foreclosure for the 12 months ending January 2017. The national average was 0.6 percent. Another positive indicator is Alaska's serious delinquency rate, at 1.1 percent of all mortgages statewide, well below the national average of 1.6 percent. Current foreclosure and serious delinquency data shows that the Alaska housing market remains solidly healthy as of this report.

Source: CoreLogic

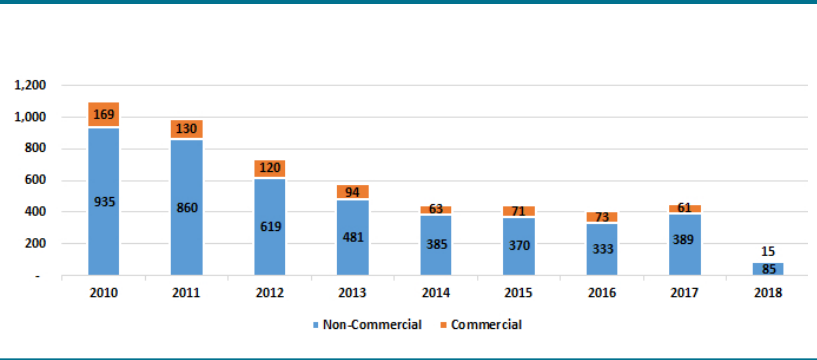


## ALASKA BANKRUPTCIES

According to recently released data from the American Bankruptcy Institute, Alaska bankruptcies remain at near record lows. For the 3 months ending March 31, Alaska ranked 51 out of the 50 states and District of Columbia with a per capita rate of 0.56 bankruptcies per 1,000 Alaskans. This compares to the national per capita rate of 2.42 bankruptcies per 1,000 Americans. The total number of bankruptcies in Alaska YTD, at 100, are down by 16 percent compared to the same timeframe in 2017. As measured by this metric, the overall financial health of Alaska's citizens and businesses continues to demonstrate results that are much better than might be expected.

## ANNUAL BANKRUPTCY FILINGS

As of 3/31/18

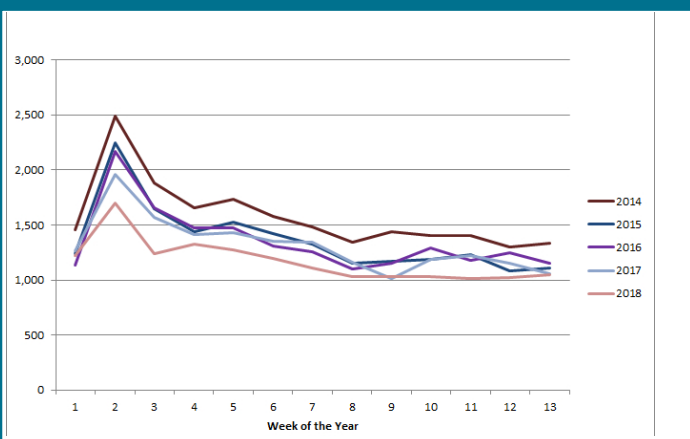


Source: American Bankruptcy Institute

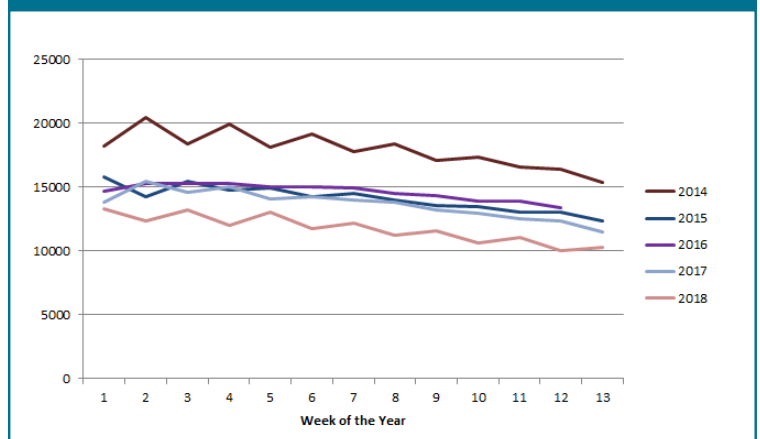
## UNEMPLOYMENT CLAIMS

Initial unemployment claim applications can be interpreted as a proxy for layoffs. They tend to fall as job growth accelerates. The trend in weekly totals in 2018 continue to track at record lows below 2016 and 2017 levels, well under recent highs seen in 2011. This continuing low range for initial unemployment claims are likely a result of mitigating factors such as older workers retiring in the face of the recession, job losses impacting non-resident workers and, the most likely cause can be attributed to laid off workers leaving Alaska for better job opportunities in the Lower 48 states. In all cases, these are workers not applying for unemployment benefits in Anchorage or Alaska, thereby keeping the unemployment rate lower than might be expected.

### INITIAL UNEMPLOYMENT CLAIMS IN ALASKA, Q1



### CONTINUING UNEMPLOYMENT CLAIMS IN ALASKA, Q1



Continuing claims figures help to show how well unemployed workers are re-entering the workforce. This total does not include workers receiving extended benefits from the federal government. 2018 weekly numbers in this category continue to track at record lows below 2017 for the same timeframe. This is another indicator of a level of strength still to be found in the Alaska economy. Declining job availability in the future may negatively affect the ability to find jobs for those workers included in this metric. Current trends do not support the likelihood of this trend developing. However, if this trend should develop it will result in an increase in the numbers of workers receiving unemployment benefits in the long term, though how significant that increase might be is highly speculative.

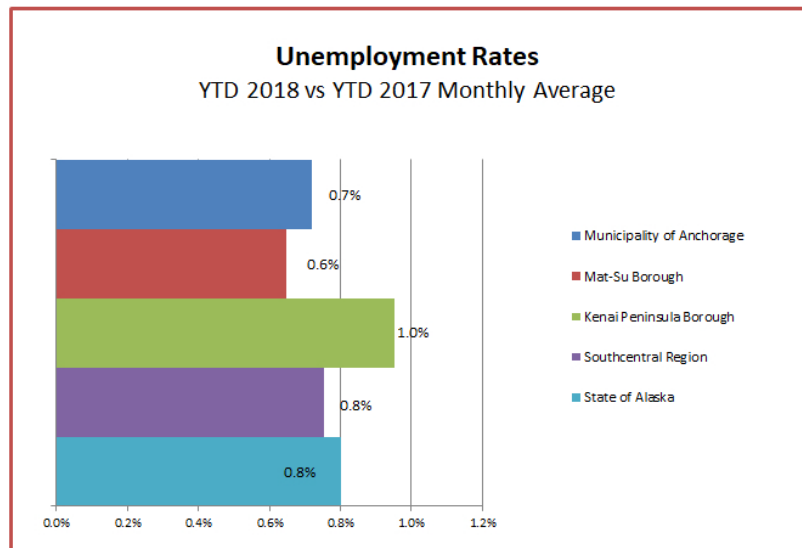
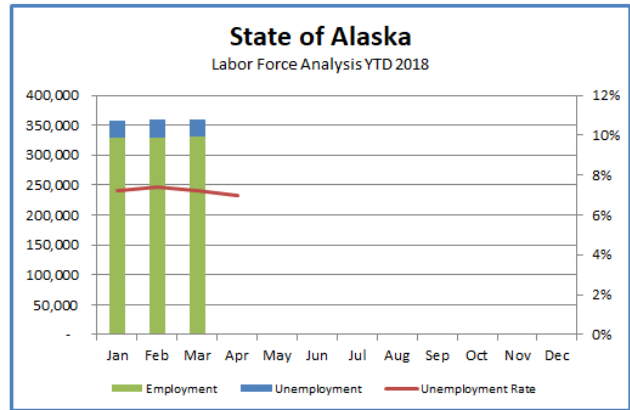
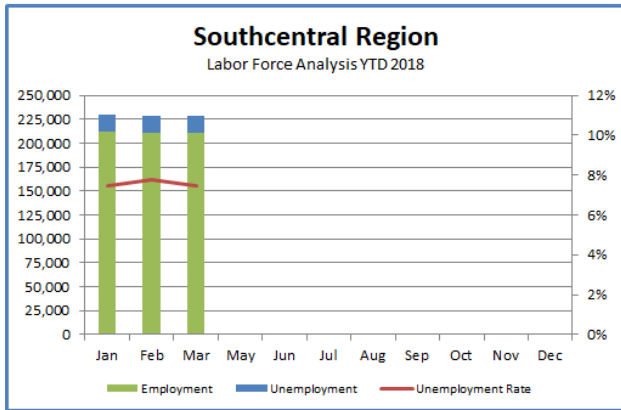
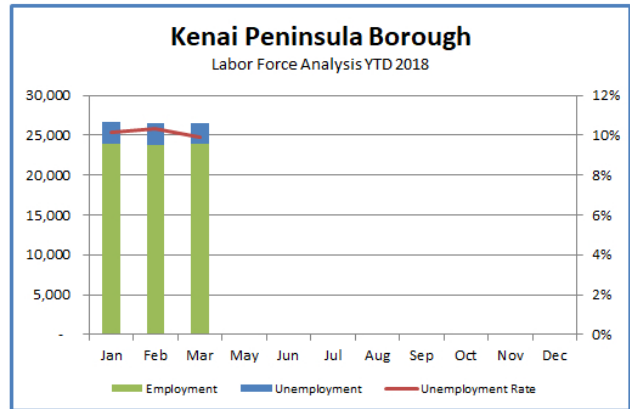
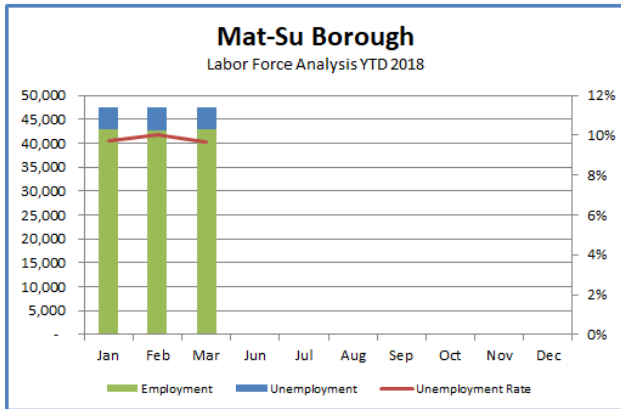
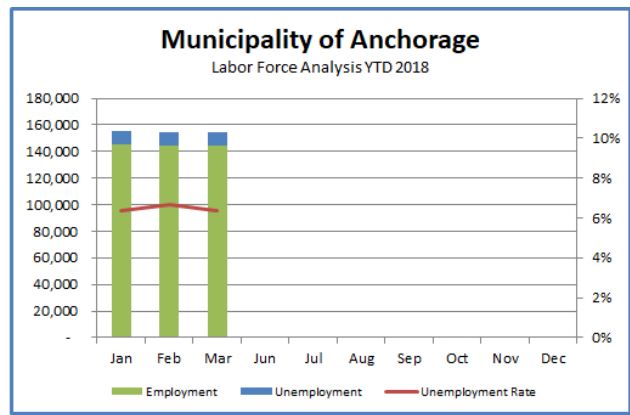
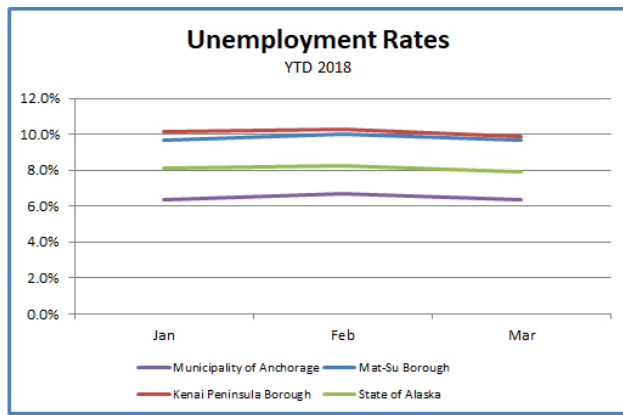
## UNEMPLOYMENT ANALYSIS (YTD, 2018)

### Anchorage, Mat-Su, Kenai Peninsula Borough

	Jan	Feb	Mar	Apr	May	Jun	Jul	Aug	Sep	Oct	Nov	Dec	18 YTD Avg	17 YTD Avg	18 vs 17 (YTD)
<b>Municipality of Anchorage</b>			Preliminary												
Labor Force	155,127	154,127	154,258										154,504	157,170	(2,666)
Employment	145,262	144,071	144,428										144,587	148,138	(3,551)
Unemployment	9,865	10,278	9,830										9,911	9,032	959
Unemployment Rate	6.4%	6.7%	6.4%										6.5%	5.7%	0.7%
<b>Mat-Su Borough</b>															
Labor Force	47,586	47,486	47,397										47,490	46,736	754
Employment	42,974	42,727	42,807										42,836	42,459	377
Unemployment	4,612	4,759	4,590										4,654	4,276	377
Unemployment Rate	9.7%	10.0%	9.7%										9.8%	9.2%	0.6%
<b>Kenai Peninsula Borough</b>															
Labor Force	26,647	26,495	26,539										26,560	26,546	14
Employment	23,951	23,764	23,912										23,876	24,116	(240)
Unemployment	2,696	2,731	2,627										2,685	2,430	255
Unemployment Rate	10.1%	10.3%	9.9%										10.1%	9.2%	1.0%
<b>Southcentral Region</b>															
Labor Force	229,360	228,108	228,194										228,554	230,452	(1,898)
Employment	212,187	210,340	211,147										211,225	214,714	(3,489)
Unemployment	17,173	17,768	17,047										17,329	15,738	1,591
Unemployment Rate	7.5%	7.8%	7.5%										7.6%	6.8%	0.8%
<b>State of Alaska</b>															
Labor Force	357,615	359,511	360,208										359,111	359,577	(465)
Employment	328,562	329,866	331,841										330,090	333,398	(3,308)
Unemployment	29,053	29,645	28,367										29,022	26,179	2,843
Unemployment Rate	8.1%	8.2%	7.9%										8.1%	7.3%	0.8%

\*Note: These numbers reflect employment, unemployment, etc. for only those people that are residence of the specified City/Region, thus are not inclusive of people who commute to another city for their jobs.

(Ex: Someone lives in Wasilla but works in Anchorage. They would be counted in the Mat-Su Borough's labor force and employment numbers, not the Municipality of Anchorage numbers)



# INDUSTRY EMPLOYMENT ESTIMATES 2018

## Municipality of Anchorage

Federal Data Series	Jan	Feb	Mar	Apr	May	Jun	Jul	Aug	Sep	Oct	Nov	Dec	2018 YTD Avg.	2017 YTD Avg.	2018 vs 2017 YTD Change	% Change
	Revised	Revised	Preliminary													
% Year over year change	-1.6%	-1.4%	-1.0%	-100.0%	-100.0%	-100.0%	-100.0%	-100.0%	-100.0%	-100.0%	-100.0%	-100.0%				
Total Nonfarm	147,600	148,300	148,400										148,100	150,100	-2,000	-1.3%
Goods Producing	10,300	10,500	10,500										10,400	10,400	0	0.0%
Mining and Logging <sup>2</sup>	2,600	2,600	2,600										2,600	2,700	0	0.0%
Oil & Gas	5,800	5,900	6,000										5,900	6,000	-100	-1.7%
Construction	1,700	1,700	1,800										1,700	1,700	0	0.0%
Manufacturing	137,300	137,900	137,900										137,700	139,700	-2,000	-1.4%
Trade/Transportation/Utilities	32,100	32,000	32,000										32,000	32,300	-300	-0.9%
Wholesale Trade	4,600	4,600	4,600										4,600	4,700	-100	-2.1%
Retail Trade	16,800	16,700	16,600										16,700	17,300	-600	-3.5%
Trans/Warehouse/Utilities	10,800	10,800	10,800										10,800	10,400	400	3.8%
Information	3,700	3,700	3,700										3,700	3,900	-200	-5.1%
Financial Activities	7,200	7,200	7,200										7,200	7,300	-100	-1.4%
Professional & Business Svcs	17,300	17,400	17,500										17,400	17,900	-500	-2.8%
Educational & Health Services	26,600	26,700	26,800										26,700	26,400	300	1.1%
Health Care	21,200	21,300	21,400										21,300	20,400	900	4.4%
Leisure & Hospitality	16,300	16,400	16,500										16,400	16,900	-500	-3.0%
Accommodation	3,200	3,200	3,300										3,200	3,200	0	0.0%
Food Svcs & Drinking Places	10,700	10,600	10,700										10,700	11,300	-600	-5.3%
Other Services	5,600	5,600	5,600										5,600	5,600	0	0.0%
Government	28,600	28,900	28,700										28,700	29,400	-700	-2.4%
Federal Government	8,300	8,400	8,300										8,300	8,500	-200	-2.4%
State Government	9,800	9,900	9,900										9,900	10,100	-200	-2.0%
State Education	2,400	2,600	2,600										2,500	2,600	-100	-3.8%
Local Government	10,400	10,600	10,400										10,500	10,800	-300	-2.8%
Local Education	7,400	7,600	7,400										7,500	7,900	-400	-5.1%

The Current Employment Statistics (CES) survey, is based on a survey of approximately 146,000 businesses and government agencies representing approximately 623,000 worksites throughout the United States. The primary statistics derived from the survey are monthly estimates of employment, hours, and earnings for the Nation, States, and major metropolitan areas. Estimates for the current year may be subject to large revisions that will be published early in the following year. CES data in the current year is presented as compared to CES data from the same months in the previous year.

The Quarterly Census of Employment and Wages (QCEW) program publishes a quarterly count of employment and wages reported by employers covering 98 percent of U.S. jobs, available at the county, MSA, state and national levels by industry. This data is considered to be the more definitive analysis of employment figures and trends. QCEW data in the current year is presented as compared to QCEW data from the same months in the previous year.

- Nonfarm Wage & Salary excludes self-employed workers, fishers, domestics, and unpaid family workers.
- All totals are seasonally non-adjusted totals.
- Government includes employees of public school systems and the University of Alaska.
- Source: Alaska Department of Labor and Workforce Development, Research and Analysis Section

\* Note: The above numbers are representative of all people employed in the Municipality of Anchorage, this is inclusive of workers who claim residence outside of the Municipality of Anchorage. (Ex: someone who lives in the Mat-Su, but works in Anchorage would be included in these number)

### Quick Comparisons

2018 vs 2017, Mar	-1,500	-1.0%
2018 vs 2017, 1st Qtr	-2,000	-1.3%
2018 vs 2017, 2nd Qtr		
2018 vs 2017, 3rd Qtr.		
2018 vs 2017, 4th Qtr.		



# State of Alaska

## Department of Labor & Workforce Development



**Heidi Drygas**  
Commissioner

**Heather Beaty**  
Communications  
Director

907.269.3569  
heather.beaty@alaska.gov

FOR IMMEDIATE RELEASE  
April 20, 2018

No. 18-14

For more information: **Karinne Wiebold, Economist**  
907-465-6039, [Karinne.Wiebold@Alaska.Gov](mailto:Karinne.Wiebold@Alaska.Gov)

### **Employment Down 0.8 Percent, Unemployment Rate Unchanged**

JUNEAU, Alaska—Alaska's total employment was down an estimated 0.8 percent in March from March 2017, a loss of about 2,600 jobs.

As a percentage, oil and gas employment's decline of 6.0 percent was the largest (-600 jobs). Retail was down 2.0 percent (-700 jobs). Construction's loss of 0.8 percent (-100 jobs) was smaller than in recent months. Employment fell in all three sectors of government: federal by 0.7 percent, state by 0.8 percent and local by 1.2 percent. Local government's declines were in public education. Health care continued to be the outlier, adding 1,000 jobs since March 2017 for a 2.7 percent increase.

Alaska's seasonally adjusted unemployment rate remained at 7.3 percent in March. The comparable national rate was 4.1 percent.

Alaska's not-seasonally adjusted rate dropped to 7.9 percent, down three-tenths of a percentage point from February. Unemployment rates fell in all but three of 29 boroughs and census areas, increasing slightly in Petersburg and Kusilvak and holding steady in Aleutians West. The lowest rates were in the Aleutians East Borough (1.8 percent) and the Aleutians West Census Area (2.5 percent), as is typical for areas with winter fisheries.

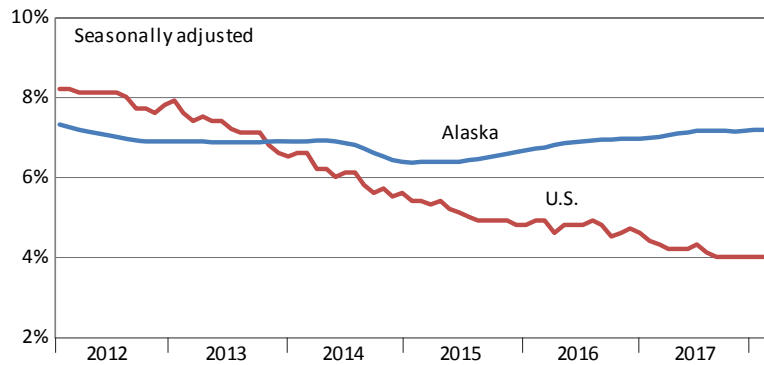
Rates were over 20 percent in rural areas with limited year-round employment including Kusilvak (22.6 percent), Hoonah-Angoon (20.5 percent) and the Yukon-Koyukuk Census Area (20.1 percent). Skagway, which depends on summer tourism, also has consistently high rates in the offseason (21.1 percent).

###



# Unemployment Rates, Alaska and U.S.

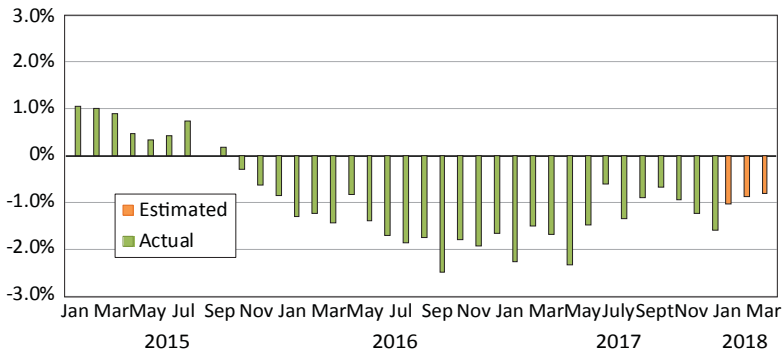
January 2012 to March 2018



Sources: Alaska Department of Labor and Workforce Development, Research and Analysis Section; and U.S. Bureau of Labor Statistics

# Wage and Salary Employment

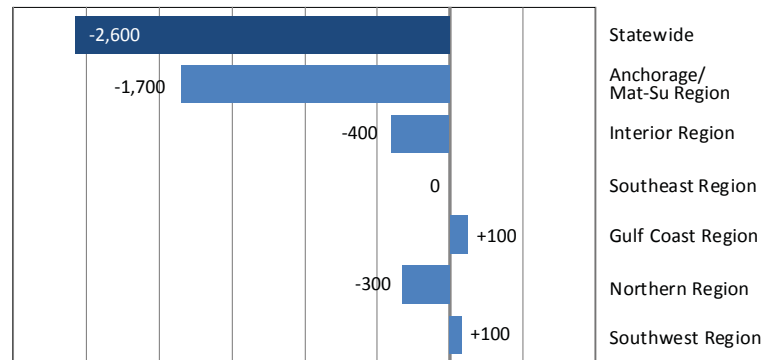
Percent change from same month the previous year



Source: Alaska Department of Labor and Workforce Development, Research and Analysis Section

# Regional Employment

Change from same month the previous year



Source: Alaska Department of Labor and Workforce Development, Research and Analysis Section

# Area Unemployment Rates

Not seasonally adjusted<sup>1</sup>

	Rate		
	3/18 <sup>P</sup>	2/18	3/17
<b>Alaska</b>	<b>7.9</b>	<b>8.2</b>	<b>7.7</b>
<b>Anchorage/Mat-Su Region</b>	<b>7.2</b>	<b>7.5</b>	<b>7.0</b>
Anchorage, Municipality	6.4	6.7	6.2
Matanuska-Susitna Borough	9.7	10.0	9.7
<b>Gulf Coast Region</b>	<b>9.2</b>	<b>9.7</b>	<b>9.0</b>
Kenai Peninsula Borough	9.9	10.3	9.8
Kodiak Island Borough	5.0	5.4	4.7
Valdez-Cordova Census Area	11.2	12.2	11.0
<b>Interior Region</b>	<b>8.0</b>	<b>8.5</b>	<b>7.7</b>
Denali Borough	18.2	19.1	21.3
Fairbanks North Star Borough	6.9	7.4	6.6
Southeast Fairbanks Census Area	12.4	12.9	11.7
Yukon-Koyukuk Census Area	20.1	21.5	20.1
<b>Northern Region</b>	<b>11.7</b>	<b>12.3</b>	<b>11.7</b>
Nome Census Area	13.2	13.6	12.2
North Slope Borough	6.7	7.2	7.1
Northwest Arctic Borough	16.1	17.0	17.0
<b>Southeast Region</b>	<b>7.8</b>	<b>8.3</b>	<b>7.5</b>
Haines Borough	15.1	16.9	12.2
Hoonah-Angoon Census Area	20.5	22.3	17.9
Juneau, City and Borough	5.2	5.4	5.2
Ketchikan Gateway Borough	8.0	8.1	7.8
Petersburg Borough	12.5	12.3	11.0
Prince of Wales-Hyder CA	14.5	15.9	13.7
Sitka, City and Borough	5.0	5.3	5.0
Skagway, Municipality	21.1	25.3	21.0
Wrangell, City and Borough	9.2	10.5	9.0
Yakutat, City and Borough	9.8	12.2	10.0
<b>Southwest Region</b>	<b>10.2</b>	<b>10.5</b>	<b>9.8</b>
Aleutians East Borough	1.8	1.9	1.8
Aleutians West Census Area	2.5	2.5	2.4
Bethel Census Area	13.9	14.6	13.7
Bristol Bay Borough	16.3	18.1	14.3
Dillingham Census Area	9.7	10.5	9.8
Kusilvak Census Area	22.6	22.3	20.7
Lake and Peninsula Borough	15.5	16.5	13.8

P = Preliminary. As more information becomes available, data are revised every month for the previous month and again at the end of every calendar year.

Note: The official definition of unemployment excludes anyone who has not made an active attempt to find work in the four-week period up to and including the week that includes the 12th of the reference month.

<sup>1</sup>Unemployment rates that are not seasonally adjusted should not be compared with those that are.

Source: Alaska Department of Labor and Workforce Development, Research and Analysis Section; and U.S. Bureau of Labor Statistics

# Employment By Industry

	Average Monthly Employment			Compared to Mar 2017	
	Mar 2018	Feb 2018	Mar 2017	Change	Percent
<b>Total Nonfarm Employment</b>	<b>315,700</b>	<b>314,500</b>	<b>318,300</b>	<b>-2,600</b>	<b>-0.8%</b>
<b>Total Private</b>	<b>234,200</b>	<b>233,200</b>	<b>236,000</b>	<b>-1,800</b>	<b>-0.8%</b>
Mining and Logging	12,500	12,400	13,100	-600	-4.6%
Oil and Gas	9,400	9,400	10,000	-600	-6.0%
Construction	12,900	12,700	13,000	-100	-0.8%
Manufacturing	12,800	12,800	12,900	-100	-0.8%
Trade, Transportation and Utilities	60,200	60,100	61,000	-800	-1.3%
Wholesale	6,200	6,200	6,300	-100	-1.6%
Retail	34,300	34,300	35,000	-700	-2.0%
Transportation, Warehousing and Utilities	19,700	19,500	19,700	0	0%
Information	5,800	5,800	6,100	-300	-4.9%
Financial Activities	11,500	11,500	11,600	-100	-0.9%
Professional and Business Services	26,600	27,000	26,900	-300	-1.1%
Education and Health	50,500	50,300	49,700	800	1.6%
Health Care	38,300	38,000	37,300	1,000	2.7%
Leisure and Hospitality	30,700	29,900	30,900	-200	-0.6%
Other Services	10,700	10,800	10,800	-100	-0.9%
<b>Total Government</b>	<b>81,500</b>	<b>81,300</b>	<b>82,300</b>	<b>-800</b>	<b>-1.0%</b>
Federal <sup>1</sup>	14,700	14,500	14,800	-100	-0.7%
State <sup>2</sup>	24,100	23,800	24,300	-200	-0.8%
Local <sup>3</sup>	42,700	43,000	43,200	-500	-1.2%

<sup>1</sup>Excludes uniformed military

<sup>2</sup>Includes the University of Alaska

<sup>3</sup>Includes public schools and tribal government

Source: Alaska Department of Labor and Workforce Development, Research and Analysis Section

