

ANCHORAGE EMPLOYMENT REPORT | SEPTEMBER ISSUE



AEDC
Anchorage Economic
Development Corporation

IN THIS ISSUE

An August
jobs update

Anchorage housing
market numbers

The most in-demand
jobs in Anchorage

SPONSORED BY



First National Bank
ALASKA
MEMBER FDIC



THANK YOU.

Thank you to our sponsors
Alaska Executive Search and
First National Bank Alaska
for making this report
possible.

Find more research at
AEDCWeb.com

All data referenced in this employment report is from the State of Alaska, Dept. of Labor & Workforce Development (www.laborstats.alaska.gov) and from the U.S. Bureau of Labor Statistics (www.bls.gov).

Report compiled by Anchorage Economic Development Corp.

If you are interested in learning more about this data or are interested in how AEDC can help you develop a report, call AEDC at 907.258.3700.

AEDC, 510 L Street, Suite 603, Anchorage, AK 99501



-0.7% YTD

TOTAL JOBS

152,000



GOV. JOBS

-400

Federal

-100

State

+100

Local

-400



GOODS PRODUCING

+200



MINING & LOGGING

-200



CONSTRUCTION

+200



MANUFACTURING

+100



SERVICES PROVIDING

-1,200



HEALTH CARE

+600



LEISURE & HOSPITALITY

+100



FINANCIAL SERVICES

+/- 0

SUMMARY

August 2018 saw a slight decline in the number of jobs compared with the same time period in 2017 -- however, overall Anchorage employment increased compared to revised July 2018 numbers. While services providing industries including retail trade and transportation and utilities continued to shed jobs, educational and health service employment saw ongoing growth.

UPS

Health Care +600

Construction + 200

Manufacturing +100

Leisure & Hospitality + 100

DOWNS

Mining & Logging -200

Oil & Gas -200

Retail Trade -700

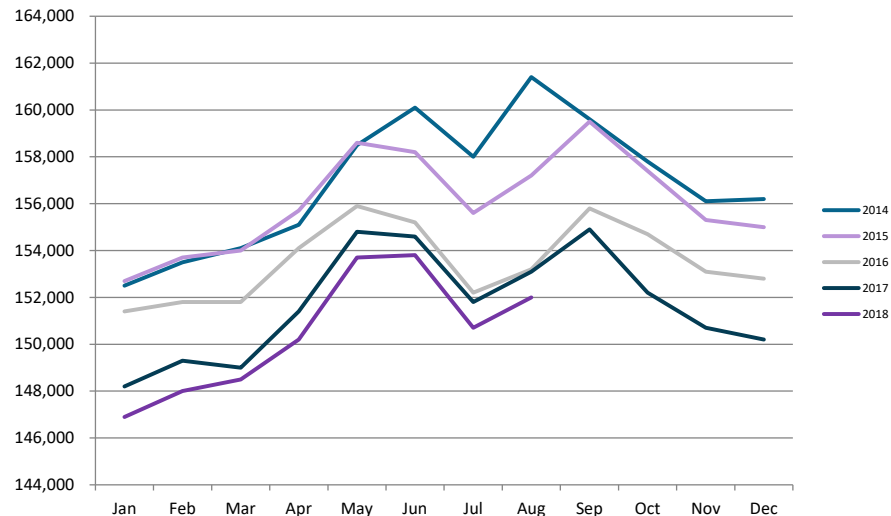
Government - 400* | **Teachers are considered unemployed during the summer months.**

THE BOTTOM LINE

Anchorage's job market continue to bounce back from 2017 numbers, with slow but steady growth in a number of key areas. Meanwhile, other economic indicators -- like real estate listings, home prices and monthly unit sales -- show promising upward momentum.

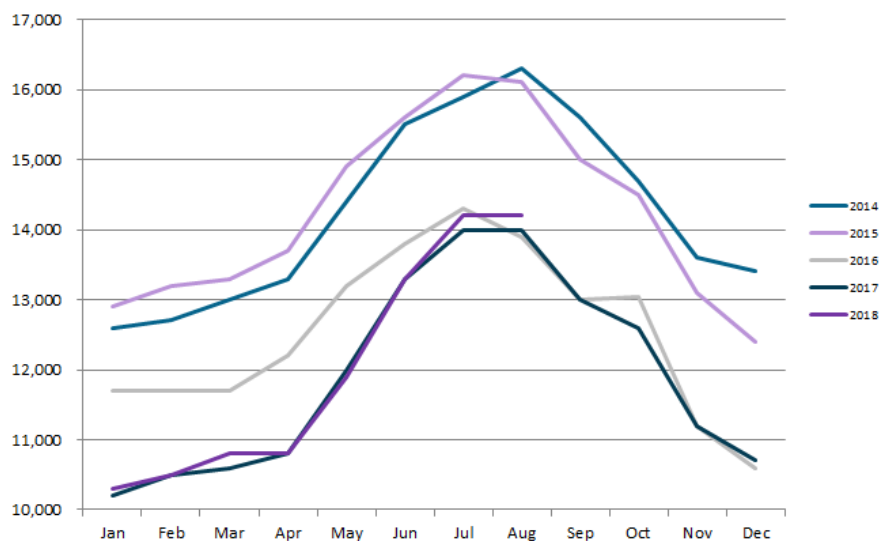
ANCHORAGE EMPLOYMENT

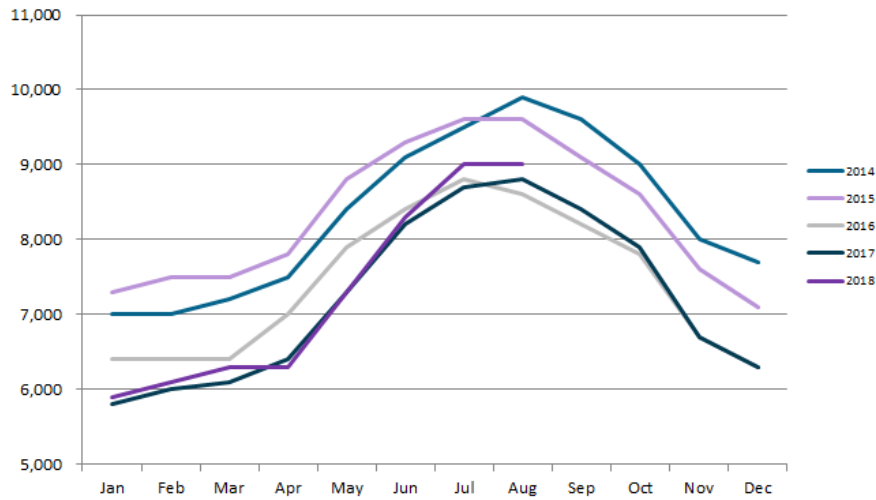
Total Anchorage employment grew to 152,000 in August -- up from a revised number of 150,700 in July. Still, the number falls noticeably below levels maintained over the past four years.



GOODS PRODUCING JOBS

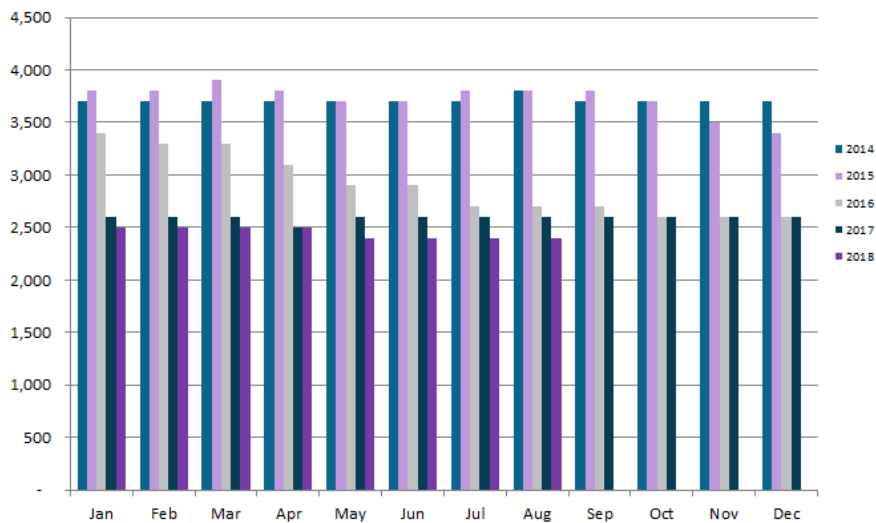
Anchorage's goods producing sector added 200 new jobs in August 2018 compared with August 2017. At 14,200 jobs, the number has risen since 2016, though it remains below 2014 and 2015 levels.





CONSTRUCTION EMPLOYMENT

At 9,000 jobs, Anchorage construction employment added 200 jobs between August 2017 and August 2018, and remained steady compared with July 2018. Both numbers increased from 2016.

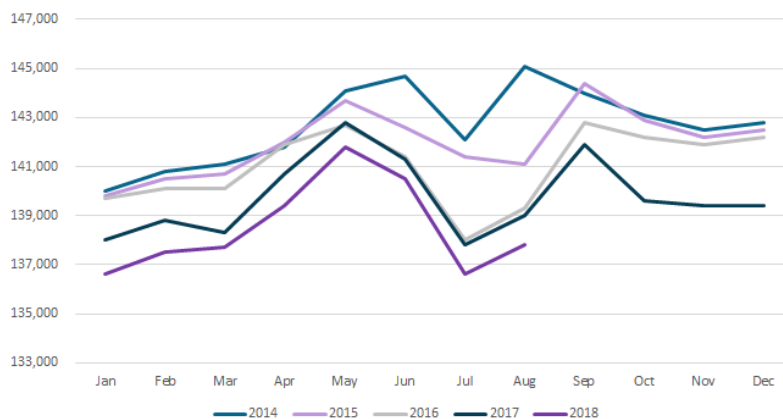


OIL & GAS EMPLOYMENT

Anchorage's oil and gas sector continues to lose jobs; down 200 positions in August 2018 compared with August 2017. At 2,400 jobs, the number has remained stable since July.

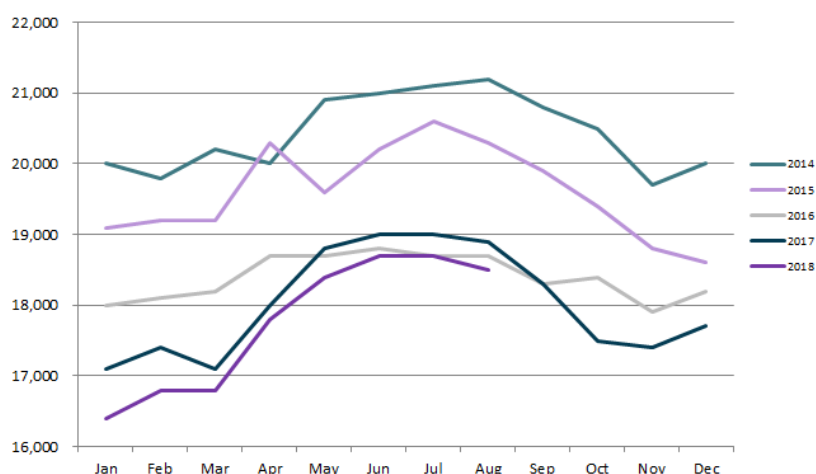
SERVICES PROVIDING JOBS

Services providing industries shed approximately 1,200 jobs between August 2018 and August 2017, shrinking from about 139,000 total jobs to about 137,800.



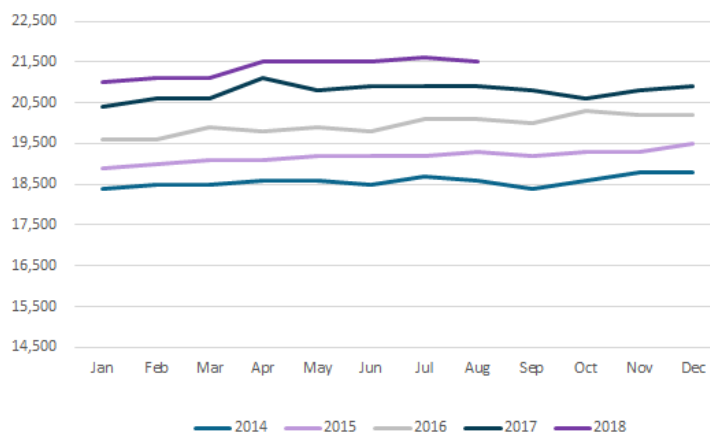
PROFESSIONAL & BUSINESS SERVICES

Anchorage's professional & business services sector lost approximately 400 jobs between August 2018 and August 2017. While total employment in this area is approaching 2016 numbers, it still remains significantly below 2014 and 2015 levels.



HEALTH CARE EMPLOYMENT

Health care employment in Anchorage continued its upward trajectory in August 2018, adding 600 jobs compared with August 2017. This industry has grown every year since 2014.



NOW HIRING

TOP JOB OPENINGS BY OCCUPATION AUGUST 2018

SOURCE: JOBSEQ®

#1 Retail
salespersons
& supervisors

Registered
nurses **#2**

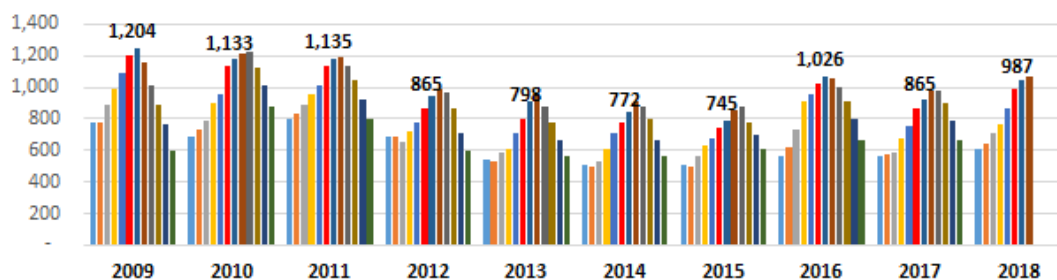
Secretaries
& administrative
#3 assistants

TOP EMPLOYERS

TOP JOB OPENINGS BY OCCUPATION AUGUST 2018

SOURCE: JOBSEQ®

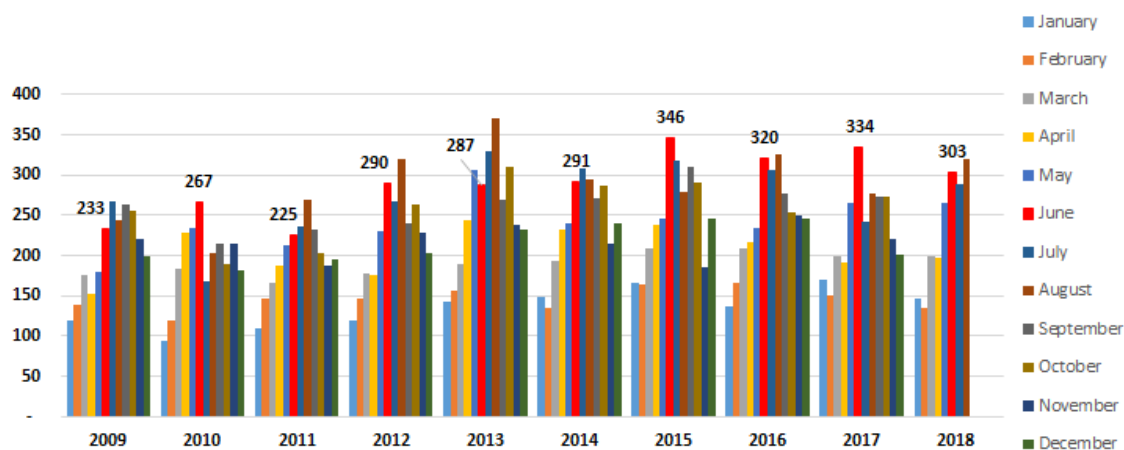
Company	Total Ads
<i>Providence Health & Services</i>	282
<i>The University of Alaska</i>	233
<i>Alaska Executive Search, Inc.</i>	147
<i>State of Alaska</i>	133
<i>Southcentral Foundation</i>	132
<i>Anchorage School District</i>	130
<i>HCA</i>	106
<i>Alaska Native Tribal Health Consortium</i>	95
<i>Workplace Alaska</i>	87
<i>Holiday Stationstores, Inc.</i>	81



ANCHORAGE SINGLE-FAMILY HOME LISTINGS

YTD 10-YEAR COMPARISON

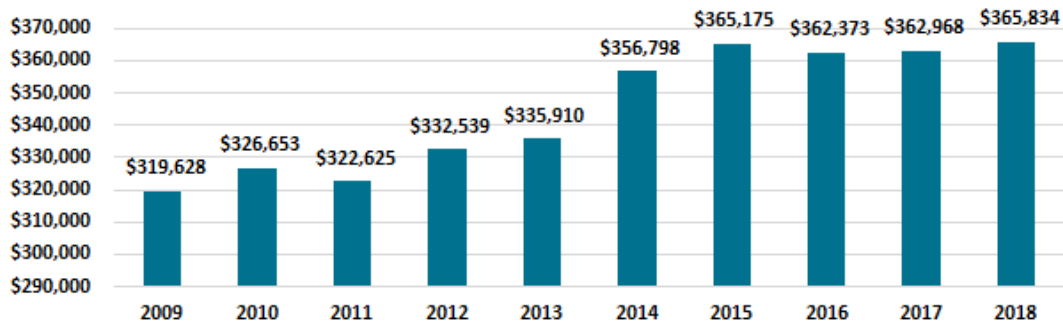
Anchorage's single family home listings stood at 987 as of August 2018 -- an increase over 2017 and 2012-2015.



ANCHORAGE SINGLE-FAMILY HOME MONTHLY UNIT SALES

YTD 10-YEAR COMPARISON

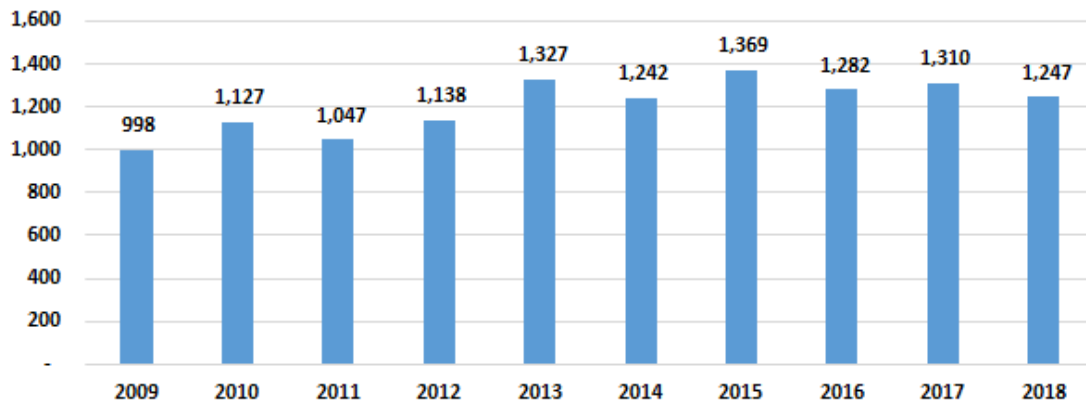
Anchorage's single family home monthly unit sales decreased between August 2018 and August 2017. The number has shrunk since 2015.



ANCHORAGE SINGLE-FAMILY HOME AVERAGE SALES PRICE

YTD 10-YEAR COMPARISON

The average price of a single family home in Anchorage rose to \$365,834 as of August 2018, representing a steady increase over the past decade.



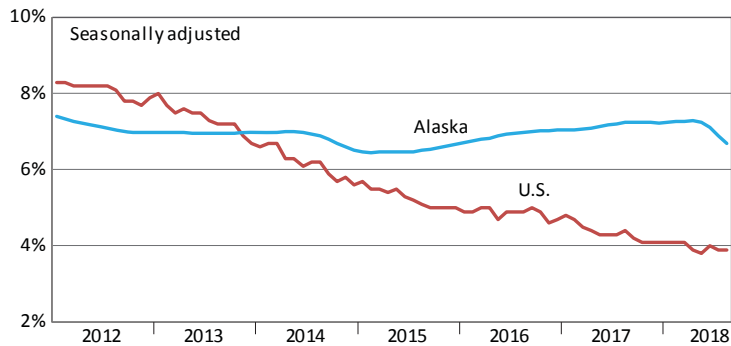
ANCHORAGE SINGLE-FAMILY HOMES TOTAL UNIT SALES

YTD 10-YEAR COMPARISON

The number of single family home total unit sales decreased in August 2018 to 1,247 -- the lowest number since 2014.

Unemployment Rates, Alaska and U.S.

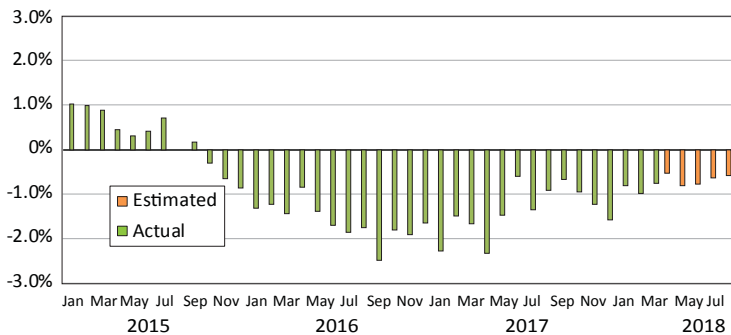
January 2012 to August 2018



Sources: Alaska Department of Labor and Workforce Development, Research and Analysis Section; and U.S. Bureau of Labor Statistics

Wage and Salary Employment

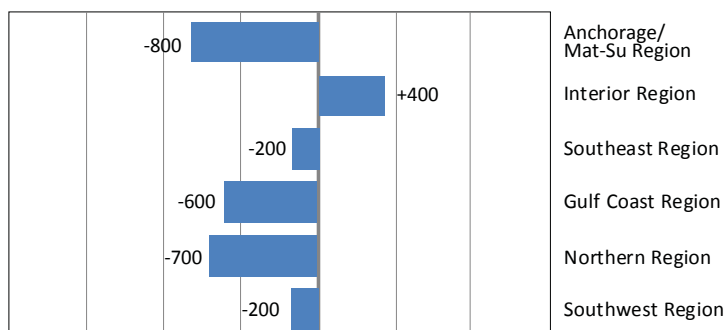
Percent change from same month the previous year



Source: Alaska Department of Labor and Workforce Development, Research and Analysis Section

Regional Employment

August 2018, change from August 2017



Source: Alaska Department of Labor and Workforce Development, Research and Analysis Section

Area Unemployment Rates

Not seasonally adjusted¹

	Rate		
	8/18 ^P	7/18	8/17
Alaska	5.4	5.8	6.4
Anchorage/Mat-Su Region	5.1	5.4	6.1
Anchorage, Municipality	4.7	5.0	5.6
Matanuska-Susitna Borough	6.4	6.9	7.8
Gulf Coast Region	5.3	5.7	6.1
Kenai Peninsula Borough	5.8	6.1	7.0
Kodiak Island Borough	4.5	5.5	4.0
Valdez-Cordova Census Area	4.1	4.2	4.8
Interior Region	4.9	5.7	6.2
Denali Borough	2.7	3.0	3.5
Fairbanks North Star Borough	4.4	5.1	5.5
Southeast Fairbanks Census Area	7.5	8.6	8.8
Yukon-Koyukuk Census Area	13.0	15.4	16.9
Northern Region	10.6	11.6	12.6
Nome Census Area	11.8	12.6	13.4
North Slope Borough	6.6	7.1	7.9
Northwest Arctic Borough	13.9	15.8	16.9
Southeast Region	4.2	4.4	4.9
Haines Borough	5.2	5.5	5.2
Hoonah-Angoon Census Area	6.7	7.4	7.5
Juneau, City and Borough	3.5	3.7	4.1
Ketchikan Gateway Borough	4.1	4.2	4.6
Petersburg Borough	5.8	6.1	7.5
Prince of Wales-Hyder CA	8.4	8.9	9.3
Sitka, City and Borough	3.0	3.3	3.7
Skagway, Municipality	2.7	3.0	2.7
Wrangell, City and Borough	4.7	4.8	6.4
Yakutat, City and Borough	7.3	7.5	8.2
Southwest Region	8.8	8.9	9.8
Aleutians East Borough	1.6	1.7	1.6
Aleutians West Census Area	2.8	2.7	2.9
Bethel Census Area	13.1	13.6	14.6
Bristol Bay Borough	3.6	1.8	4.1
Dillingham Census Area	5.9	6.1	7.8
Kusilvak Census Area	17.9	22.4	19.2
Lake and Peninsula Borough	8.9	8.2	9.8

P = Preliminary. As more information becomes available, data are revised every month for the previous month and again at the end of every calendar year.

Note: The official definition of unemployment excludes anyone who has not made an active attempt to find work in the four-week period up to and including the week that includes the 12th of the reference month.

¹Unemployment rates that are not seasonally adjusted should not be compared with those that are.

Sources: Alaska Department of Labor and Workforce Development, Research and Analysis Section; and U.S. Bureau of Labor Statistics

Employment By Industry

	Average Monthly Employment			Compared to Aug 2017	
	Aug 2018	July 2018	Aug 2017	Change	Percent
Total Nonfarm Employment	348,800	351,200	350,800	-2,000	-0.6%
Total Private	272,200	275,800	273,900	-1,700	-0.6%
Mining and Logging	13,100	13,000	13,500	-400	-3.0%
Oil and Gas	9,400	9,400	9,800	-400	-4.1%
Construction	18,400	18,300	18,100	300	1.7%
Manufacturing	20,500	23,600	20,800	-300	-1.4%
Trade, Transportation and Utilities	68,600	68,700	69,400	-800	-1.2%
Wholesale	6,500	6,400	6,500	0	0.0%
Retail	36,800	37,200	37,800	-1,000	-2.6%
Transportation, Warehousing and Utilities	25,300	25,100	25,100	200	0.8%
Information	5,600	5,700	5,900	-300	-5.1%
Financial Activities	12,400	12,400	12,600	-200	-1.6%
Professional and Business Services	28,900	28,900	29,300	-400	-1.4%
Education and Health	50,600	50,600	50,000	600	1.2%
Health Care	38,500	38,400	37,800	700	1.9%
Leisure and Hospitality	43,000	43,500	43,200	-200	-0.5%
Other Services	11,100	11,100	11,100	0	0.0%
Total Government	76,600	75,400	76,900	-300	-0.4%
Federal ¹	15,700	15,900	15,600	100	0.6%
State ²	23,000	22,300	23,000	0	0.0%
Local ³	37,900	37,200	38,300	-400	-1.0%

¹Excludes uniformed military

²Includes the University of Alaska

³Includes public schools and tribal government

Source: Alaska Department of Labor and Workforce Development, Research and Analysis Section



AEDC
Anchorage Economic
Development Corporation