

ANCHORAGE EMPLOYMENT REPORT

NOVEMBER ISSUE



AEDC
Anchorage Economic
Development Corporation

IN THIS ISSUE

An October
jobs update

Anchorage housing
market numbers

The most in-demand
jobs in Anchorage

SPONSORED BY



First National Bank
ALASKA
MEMBER FDIC



THANK YOU.

Thank you to our sponsors
Alaska Executive Search and
First National Bank Alaska for
making this report possible.

Find more research at
AEDCWeb.com











All data referenced in this employment report is from the State of Alaska, Dept. of Labor & Workforce Development (www.laborstats.alaska.gov) and from the U.S. Bureau of Labor Statistics (www.bls.gov).

Report compiled by Anchorage Economic Development Corp.

If you are interested in learning more about this data or are interested in how AEDC can help you develop a report, call AEDC at 907.258.3700.

AEDC, 510 L Street, Suite 603, Anchorage, AK 99501



↓		-0.7% YTD TOTAL JOBS 151,500
↓		GOV. JOBS -500 Federal -100 State -100 Local -200
↑		GOODS PRODUCING +300
↓		MINING & LOGGING -200
↑		CONSTRUCTION +500
↑		MANUFACTURING +100
↓		SERVICES PROVIDING -1,200
↑		HEALTH CARE +500
↑		LEISURE & HOSPITALITY +100
↓		FINANCIAL ACTIVITIES -100

SUMMARY

October 2018 saw a slight decline in the number of jobs compared with the same time period in 2017; however, overall Anchorage employment increased compared to revised September 2018 numbers. While services providing industries including retail trade continued to shed jobs, educational and health service employment saw ongoing growth.

UPS

Construction +500
 Manufacturing +100
 Wholesale Trade +100
 Trans/Warehouse/Utilities +200
 Educational & Health Services +500
 Health Care +500
 Leisure & Hospitality +100

DOWNES

Mining and Logging -200
 Oil & Gas -100
 Trade/Transportation/Utilities -300
 Retail Trade -500
 Information -400
 Financial Activities -100
 Professional & Business Services -500

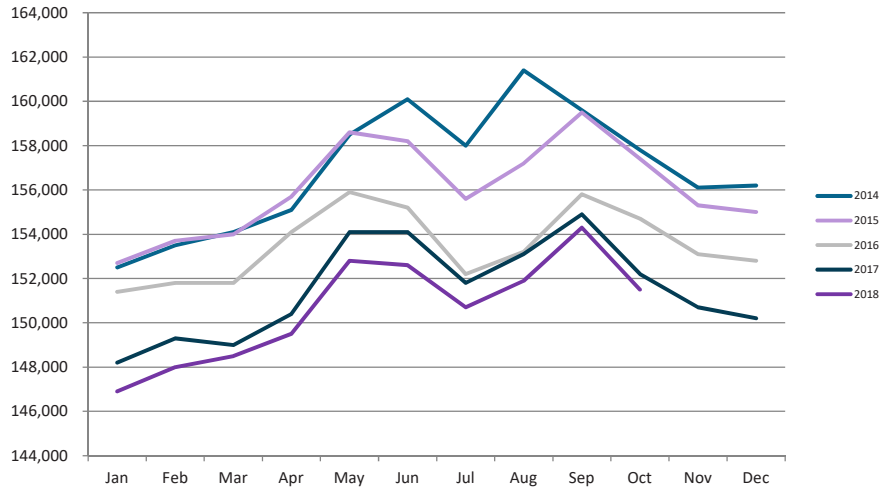
THE BOTTOM LINE

Anchorage's job market continues to bounce back from 2017 numbers, with slow but steady growth in a number of key areas. Meanwhile, other economic indicators, like real estate listing, home prices and monthly unit sales, show promising upward momentum.

ANCHORAGE EMPLOYMENT

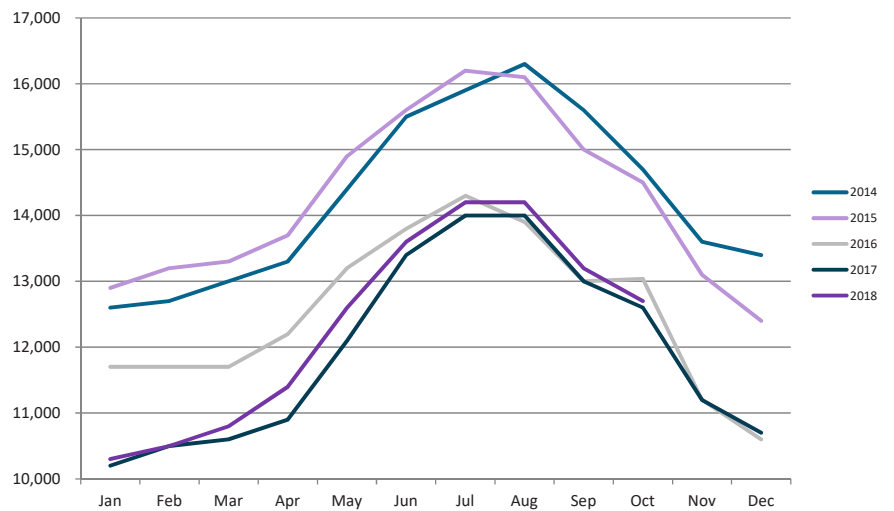
Total Anchorage employment shrank to 151,500 in October, down from a revised number of 154,100 in September.

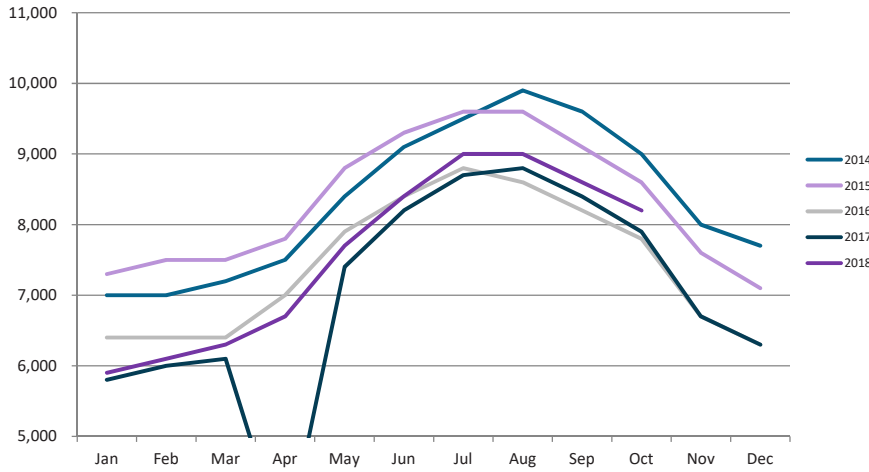
The number falls noticeably below levels maintained over the last four years.



GOODS PRODUCING JOBS

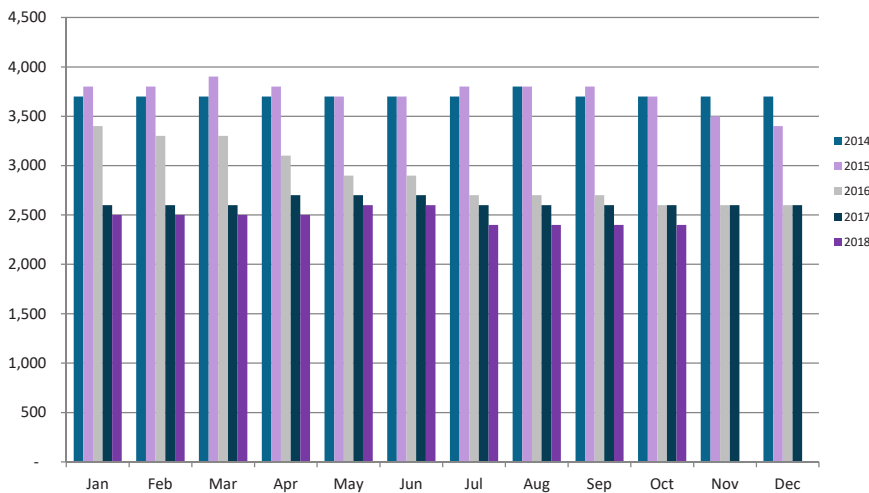
Anchorage's goods producing sector added 300 new jobs in October 2018 compared with October 2017. At 13,200 jobs, the number has risen since 2016, though it remains below 2014 and 2015 levels.





CONSTRUCTION EMPLOYMENT

At 8,200 jobs, Anchorage construction employment added 100 jobs between October 2017 and October 2018.

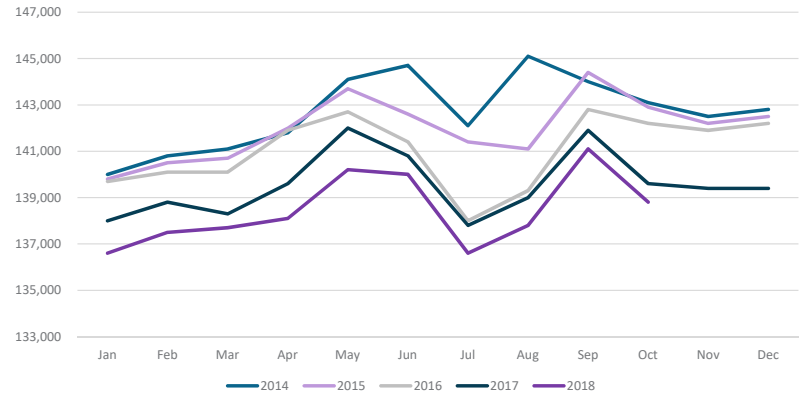


OIL & GAS EMPLOYMENT

Anchorage's oil and gas sector continues to lose jobs; down 100 positions between October 2017 and October 2018. At 2,400 jobs, the number has remained stable since May.

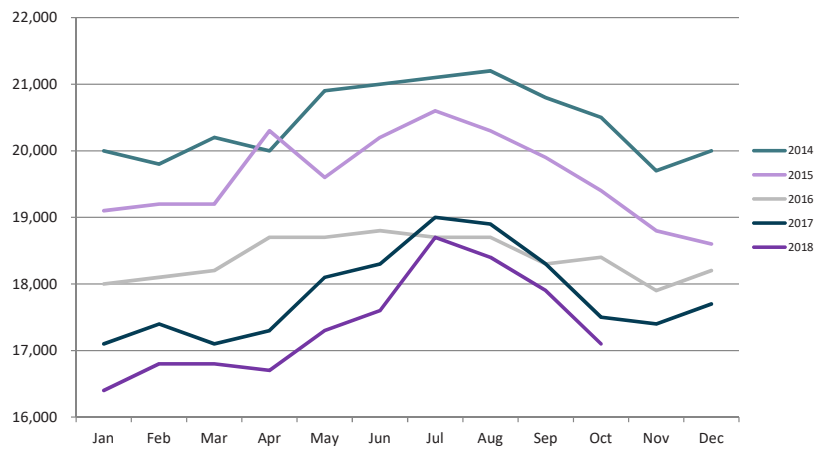
SERVICES PROVIDING JOBS

Services providing industries shed approximately 1,200 jobs between October 2017 and October 2018, shrinking from 141,100 to 138,800.



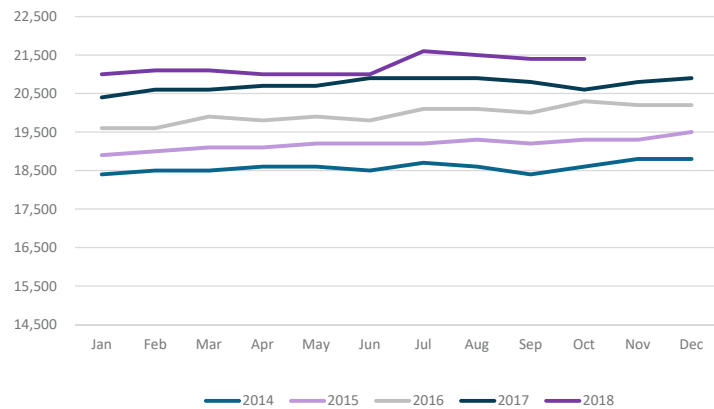
PROFESSIONAL & BUSINESS SERVICES

Anchorage’s professional & business services sector lost approximately 500 jobs between October 2017 and October 2018. While total employment in this area is approaching 2016 numbers, it still remains significantly below 2014 and 2015 levels.



HEALTH CARE EMPLOYMENT

Health care employment in Anchorage continues its upward trajectory in October 2018, adding 500 jobs compared to October 2017. This industry has grown every year since 2014.



NOW HIRING

TOP JOB OPENINGS BY OCCUPATION SEPTEMBER 2018

SOURCE: JOBSEQ®

#1 Retail
salespersons

Registered
nurses **#2**

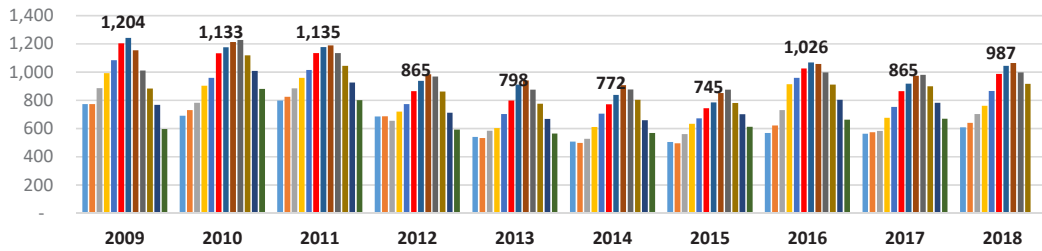
Social &
Human
Service
Assistants
#3

TOP EMPLOYERS

TOP JOB OPENINGS BY OCCUPATION SEPTEMBER 2018

SOURCE: JOBSEQ®

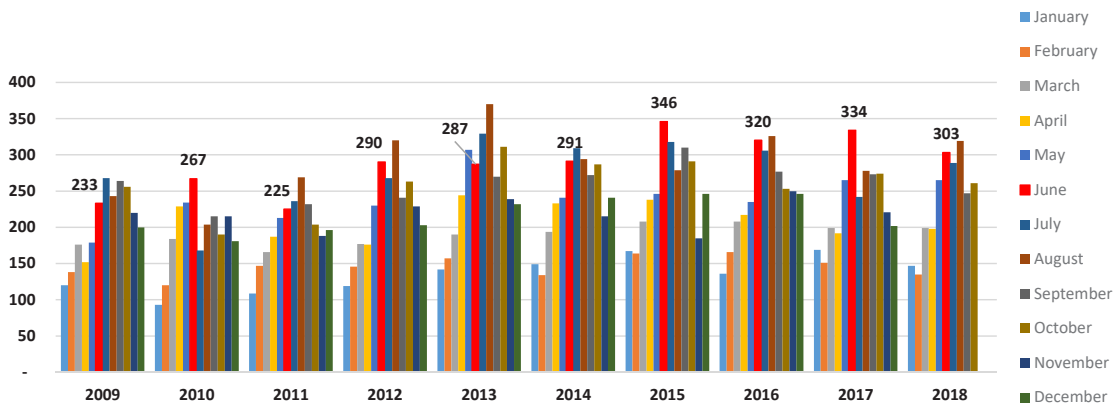
Company	Total Ads
<i>Providence Health & Services</i>	225
<i>The University of Alaska</i>	199
<i>State of Alaska</i>	124
<i>Alaska Native Tribal Health Consortium</i>	98
<i>Alaska Executive Search, Inc.</i>	97
<i>Anchorage School District</i>	80
<i>HCA</i>	75
<i>Swedish Health Systems</i>	74
<i>Southcentral Foundation</i>	70
<i>Albertsons Companies</i>	68



ANCHORAGE SINGLE-FAMILY HOME LISTINGS

YTD 10-YEAR COMPARISON

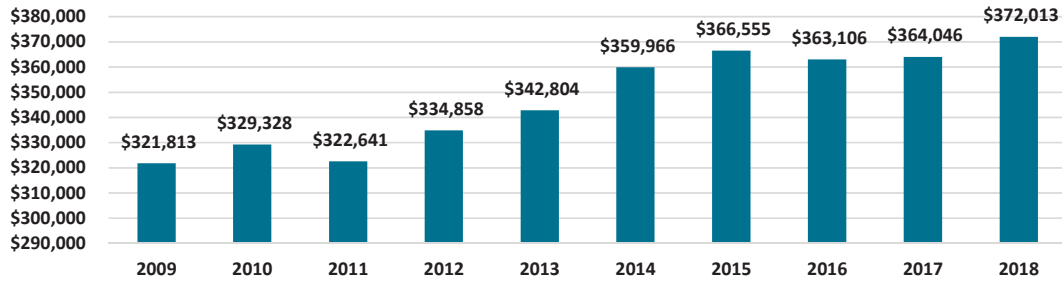
Anchorage's single family home listings stood at 916 as of October 2018, an increase over October 2017.



ANCHORAGE SINGLE-FAMILY HOME MONTHLY UNIT SALES

YTD 10-YEAR COMPARISON

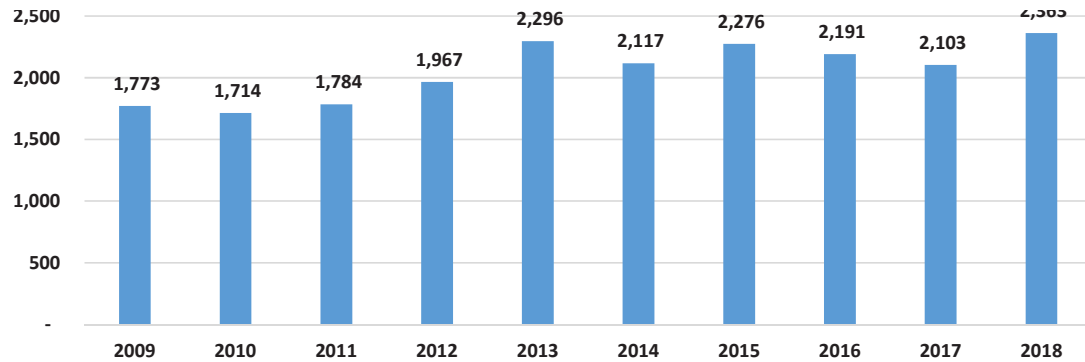
Anchorage's single family home monthly unit sales stood at 261 in October 2018, a decrease from 274 in October 2017.



ANCHORAGE SINGLE-FAMILY HOME AVERAGE SALES PRICE

YTD 10-YEAR COMPARISON

The average price of a single family home in Anchorage rose to \$378,550 in October 2018 from \$366,055 in October 2017.



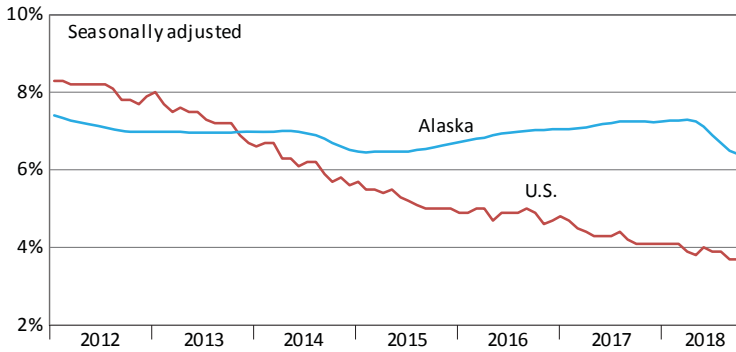
ANCHORAGE SINGLE-FAMILY HOMES TOTAL UNIT SALES

YTD 10-YEAR COMPARISON

The number of single family home unit sales increased in October 2018 to 2,363, up from October 2017.

Unemployment Rates, Alaska and U.S.

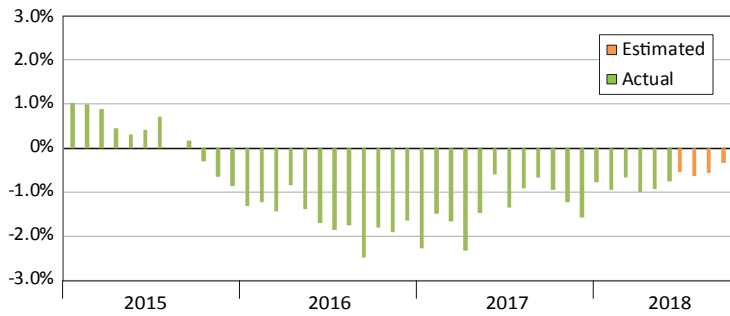
January 2012 to October 2018



Sources: Alaska Department of Labor and Workforce Development, Research and Analysis Section; and U.S. Bureau of Labor Statistics

Wage and Salary Employment

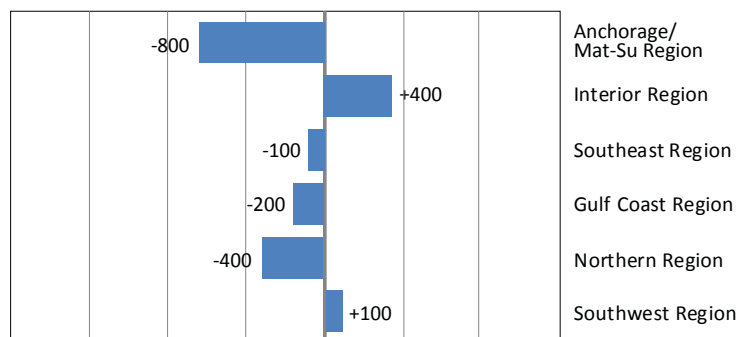
Percent change from same month the previous year



Source: Alaska Department of Labor and Workforce Development, Research and Analysis Section

Regional Employment

October 2018, change from October 2017



Source: Alaska Department of Labor and Workforce Development, Research and Analysis Section

Area Unemployment Rates

Not seasonally adjusted¹

	Rate		
	10/18 ^P	9/18	10/17
Alaska	5.8	5.6	6.8
Anchorage/Mat-Su Region	5.3	5.3	6.3
Anchorage, Municipality	4.9	4.9	5.8
Matanuska-Susitna Borough	6.5	6.4	8.0
Gulf Coast Region	6.5	5.8	7.5
Kenai Peninsula Borough	6.8	6.2	8.1
Kodiak Island Borough	4.6	4.8	4.9
Valdez-Cordova Census Area	7.3	5.0	8.4
Interior Region	5.5	5.3	6.7
Denali Borough	7.2	3.1	10.3
Fairbanks North Star Borough	5.0	4.9	5.9
Southeast Fairbanks Census Area	7.9	7.5	9.5
Yukon-Koyukuk Census Area	12.0	12.2	16.1
Northern Region	9.1	9.7	11.1
Nome Census Area	9.4	9.8	11.1
North Slope Borough	6.4	7.0	7.4
Northwest Arctic Borough	11.8	12.7	15.7
Southeast Region	5.5	4.6	6.1
Haines Borough	8.0	5.8	9.1
Hoonah-Angoon Census Area	10.1	6.6	12.4
Juneau, City and Borough	4.3	3.9	4.6
Ketchikan Gateway Borough	5.6	4.7	6.2
Petersburg Borough	7.6	6.3	8.0
Prince of Wales-Hyder CA	9.5	8.6	10.8
Sitka, City and Borough	4.2	3.5	4.8
Skagway, Municipality	9.1	3.1	14.3
Wrangell, City and Borough	5.9	5.2	7.2
Yakutat, City and Borough	6.0	6.4	9.8
Southwest Region	8.9	8.8	10.2
Aleutians East Borough	2.7	2.3	2.4
Aleutians West Census Area	4.3	3.4	4.5
Bethel Census Area	10.9	11.5	12.5
Bristol Bay Borough	8.9	5.2	10.6
Dillingham Census Area	7.7	7.4	9.6
Kusilvak Census Area	15.6	15.8	18.8
Lake and Peninsula Borough	10.3	8.9	12.5

P = Preliminary. As more information becomes available, data are revised every month for the previous month and again at the end of every calendar year.

Note: The official definition of unemployment excludes anyone who has not made an active attempt to find work in the four-week period up to and including the week that includes the 12th of the reference month.

¹Unemployment rates that are not seasonally adjusted should not be compared with those that are.

Sources: Alaska Department of Labor and Workforce Development, Research and Analysis Section; and U.S. Bureau of Labor Statistics

Employment By Industry

	Average Monthly Employment			Compared to Oct 2017	
	Oct 2018	Sep 2018	Oct 2017	Change	Percent
Total Nonfarm Employment	323,900	338,300	325,000	-1,100	-0.3%
Total Private	242,200	257,300	243,300	-1,100	-0.5%
Mining and Logging	12,700	12,800	12,800	-100	-0.8%
Oil and Gas	9,200	9,300	9,300	-100	-1.1%
Construction	16,600	17,500	16,300	300	1.8%
Manufacturing	10,500	14,100	10,900	-400	-3.7%
Trade, Transportation and Utilities	63,200	66,500	63,800	-600	-0.9%
Wholesale	6,300	6,400	6,300	0	0%
Retail	35,200	36,000	36,000	-800	-2.2%
Transportation, Warehousing and Utilities	21,700	24,100	21,500	200	0.9%
Information	5,700	5,700	5,800	-100	-1.7%
Financial Activities	11,500	11,700	11,800	-300	-2.5%
Professional and Business Services	27,000	28,000	27,400	-400	-1.5%
Education and Health	50,200	50,100	49,800	400	0.8%
Health Care	38,100	38,000	37,500	600	1.6%
Leisure and Hospitality	33,700	39,800	33,600	100	0.3%
Other Services	11,100	11,100	11,100	0	0%
Total Government	81,700	81,000	81,700	0	0%
Federal ¹	14,900	15,500	14,800	100	0.7%
State ²	23,900	23,900	23,900	0	0%
Local ³	42,900	41,600	43,000	-100	-0.2%

¹Excludes uniformed military

²Includes the University of Alaska

³Includes public schools and tribal government

Source: Alaska Department of Labor and Workforce Development, Research and Analysis Section



AEDC
Anchorage Economic
Development Corporation